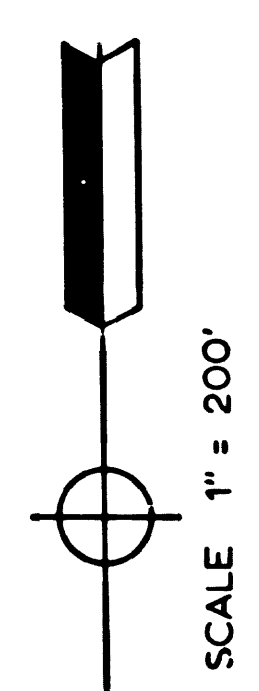


LOS ANGELES COUNTY



SEE MF 4025-8

MATCH LINE

44,344,000

44,344,000

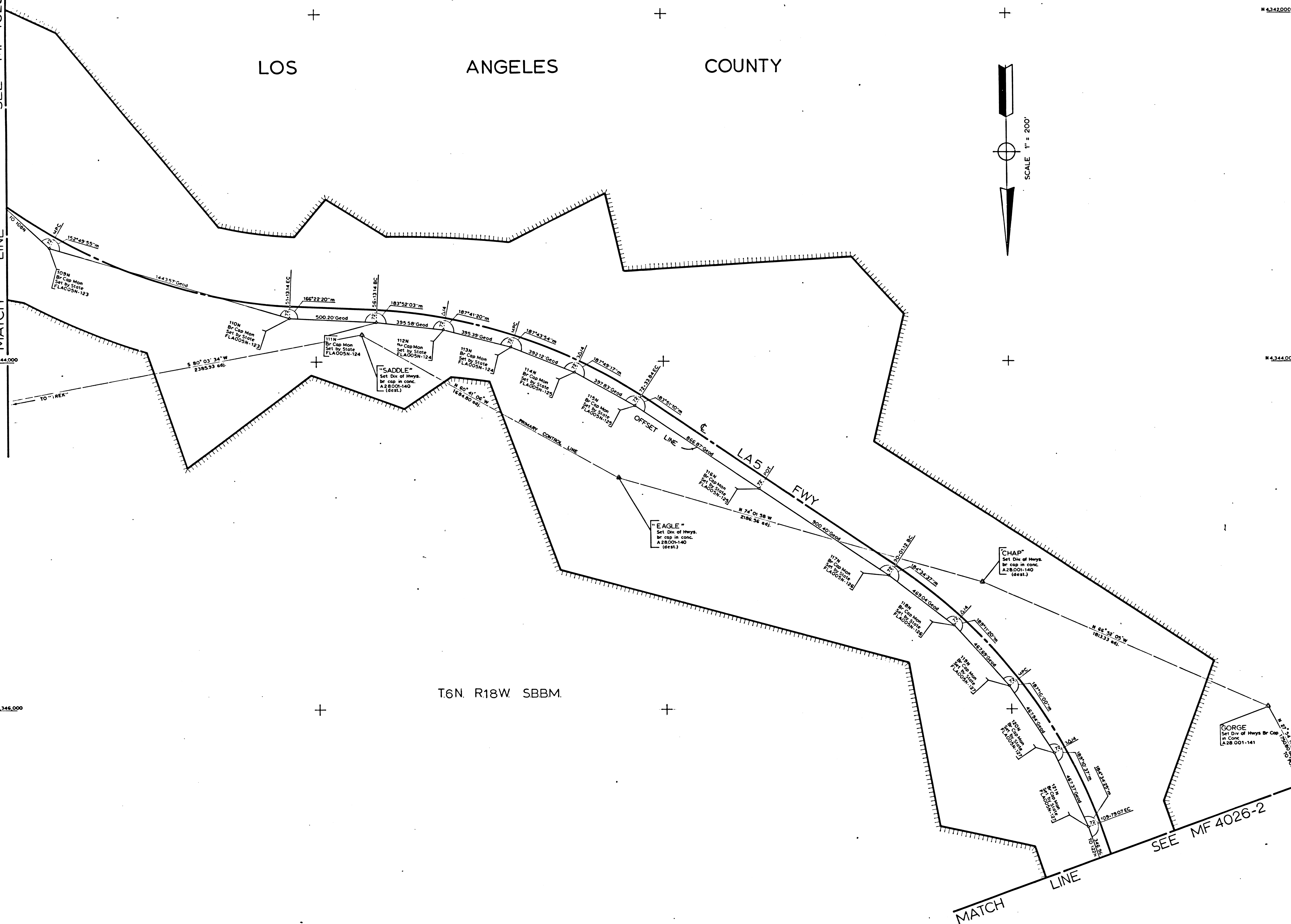
44,344,000

44,342,000

44,344,000

44,344,000

44,344,000



T6N. R18W SBBM.

SEE MF 4026-2

F.M. 21253-1

IN LOS ANGELES COUNTY BETWEEN 12.3 MILES NORTH OF PARKER RD & 10.3 MILES NORTH OF PARKER RD.  
 LA 5 Post Miles R711 - R745  
 CONSTRUCTION CONTRACT 07-049334  
 MONUMENTATION MAP

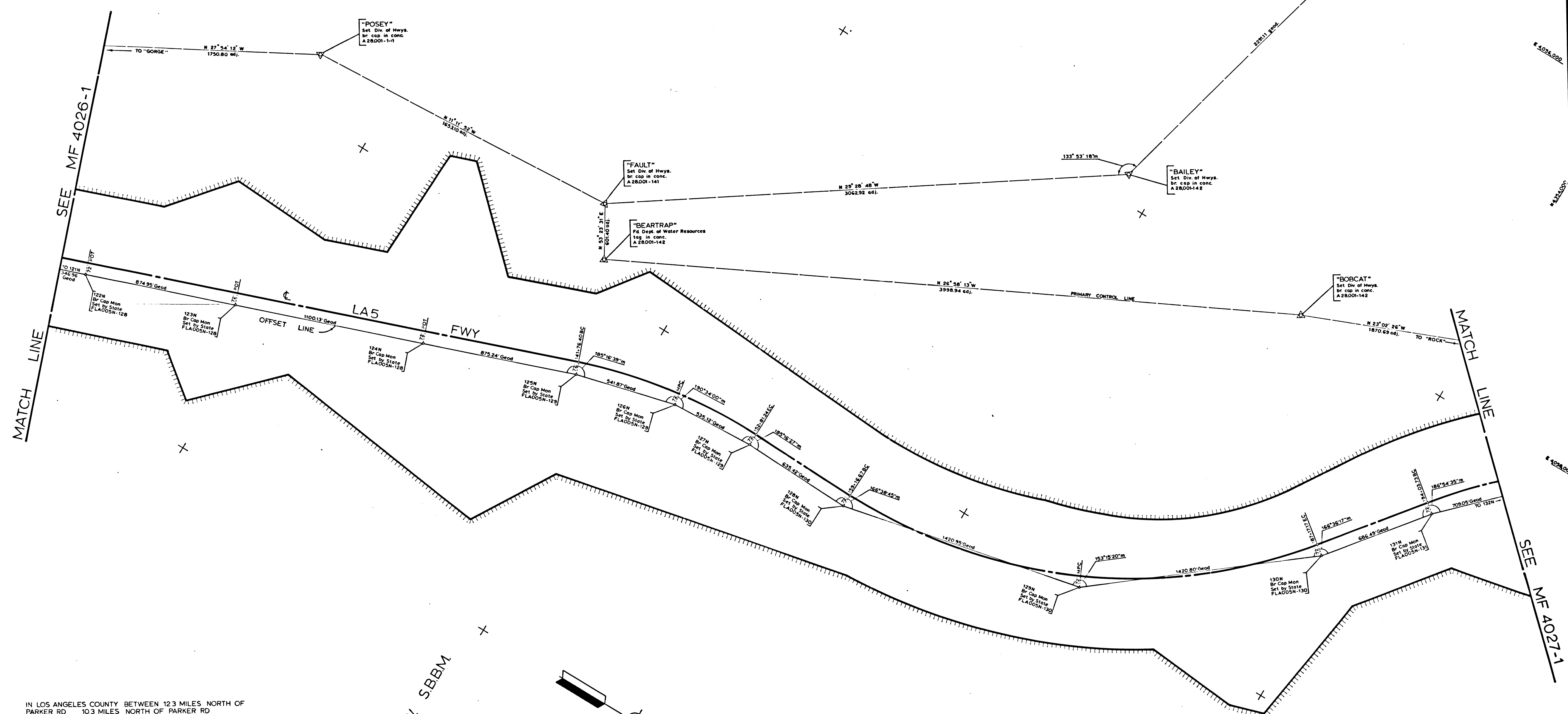
Bearings are taken from State Coordinate Maps based on Sections 8801, 8808, 8811, 8814, 8815 of Division 8 of the 1953 Public Resources Code.  
 CCM Numbers: 2833, 2911

Division of Highways survey information is available from the Engineering Services Dept., Los Angeles, Cal.  
 Division of Highways right-of-way information is available from the Right of Way Dept., Los Angeles, Cal.

REFERENCES: FLA005N-0123 thru-0127  
 A 28001-140(41)  
 RW MAP - F137  
 AS BUILT PLANS

CONTRACT COUNTY ROUTE POST MILES - TOTAL PROJECT NO. SHEETS	07 LA 5 R711 - R745 1 2	Chief of Party W DALE
STATE OF CALIFORNIA DIVISION OF HIGHWAYS SURVEYS	Checked by R BJORKLUND	Checked by E S DEMPSEY
MONUMENTATION MAP	Drawn by E S DEMPSEY	Checked by F ENOKI
DATUM: CALIFORNIA COORDINATE SYSTEM - ZONE 2	Survey Office Supervisor E L GREENGARD	Survey Engineer F A MAAS
MAP NO. MF 4026-1	Checked by S L ELICKS	
6961	Date 11-27	
C.E.	Deputy District Engineer	
Survey Date		
Drawn By		
Date		

# LOS ANGELES COUNTY



IN LOS ANGELES COUNTY BETWEEN 12.3 MILES NORTH OF  
PARKER RD 10.3 MILES NORTH OF PARKER RD  
LA 5 Post Miles R711-R745  
CONSTRUCTION CONTRACT 07-049334  
MONUMENTATION MAP

Bearings are taken from State Coordinate Maps based on  
Sections BB01, 8808, BB11, 8814, 8815 of Division 8 of  
the 1953 Public Resources Code.  
CCM Numbers 22911

Division of Highways survey information is available from  
the Engineering Services Department, Los Angeles, California.  
Division of Highways right-of-way information is available  
at Right of Way Department, Los Angeles, California.

REFERENCES: FLA005N-0128 thru 0131  
A28001-142  
R/W MAP-F1317  
AS BUILT PLANS

F.M. 21253-2

TRACT	COUNTY	ROUTE	POST MILES - TOTAL PROJECT	SHEET NO.	TOTAL SHEETS	DATE OF PARTY
07	LA	5	R711 - R745	2	2	W. DALE
STATE OF CALIFORNIA			DIVISION OF HIGHWAYS		CHECKED BY	
SURVEYS			MONUMENTATION MAP		R. BJORKLUND	
DATUM: CALIFORNIA COORDINATE SYSTEM - ZONE 7			MAP NO. MF 4026-2		DESIGNED BY	
6961			DATE		E. S. DEMPSEY	
CE			DATE		F. ENOKI	
DRAWN BY			DATE		E. L. GREENGARD	
CHECKED BY			DATE		F. A. MAAS	
APPROVED BY			DATE		S. L. ELICKS	