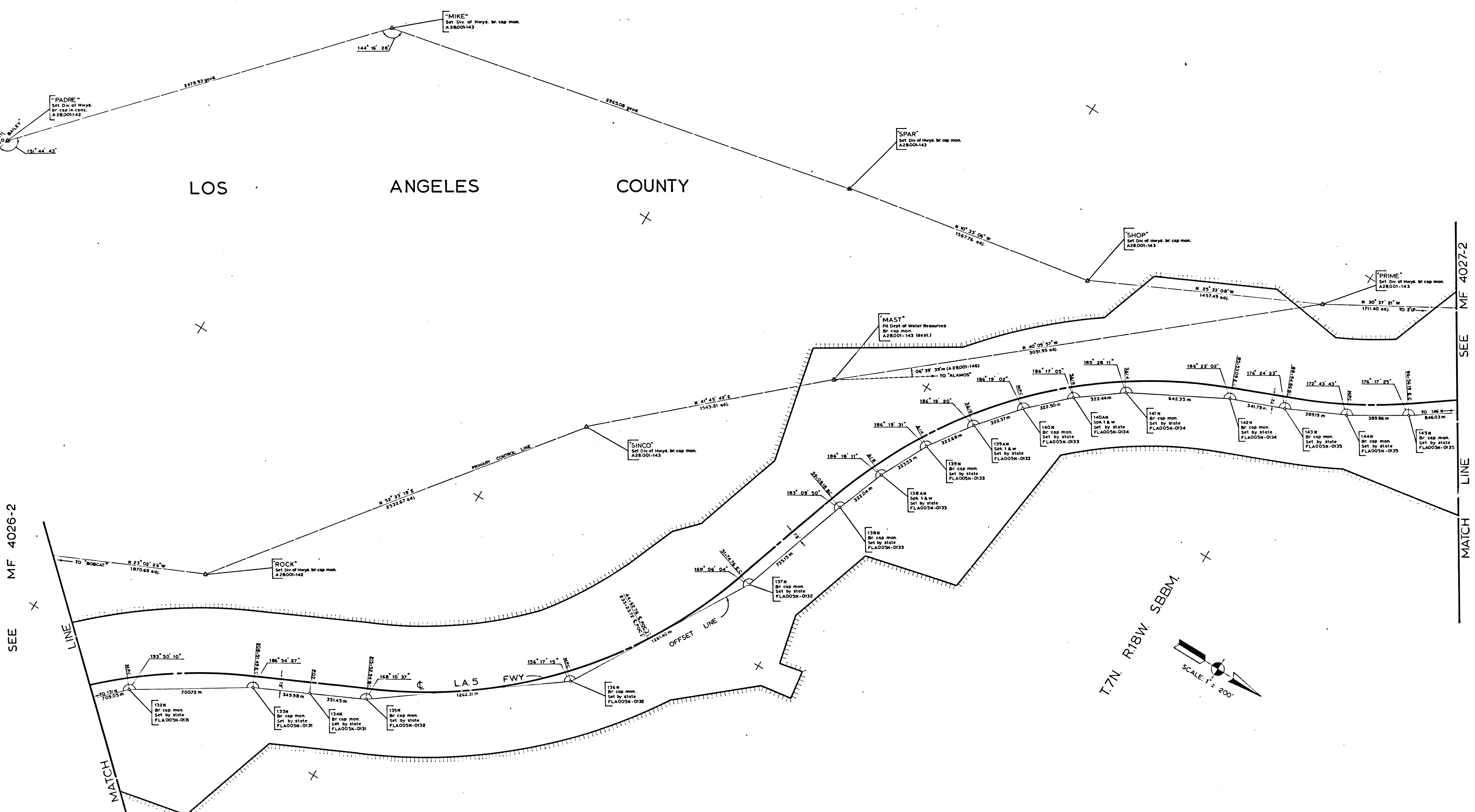


LOS ANGELES COUNTY



SEE MF 4026-2

SEE MF 4027-2

IN LOS ANGELES COUNTY BETWEEN 10.3 MILES SOUTH OF ROUTE 138 & 6.8 MI. SO. OF ROUTE 138  
 LA 5 POST MILES R745 - R780  
 CONSTRUCTION CONTRACT 07-049353  
 MONUMENTATION MAP

Bearings are taken from State Coordinate Control Maps based on Sections 8801, 8808, 8811, 8814, 8815 of Division B of the 1953 Public Resources Code.  
 CCM Numbers: 2911, 3011

Division of Highways survey information is available from the Engineering Services Department, Los Angeles, California.  
 Division of Highways right-of-way information is available at Right of Way Department, Los Angeles, California.

REFERENCES: FLA005N-0131 thru -0135  
 A28.001-143  
 RW MAP- F1317  
 AS BUILT PLANS

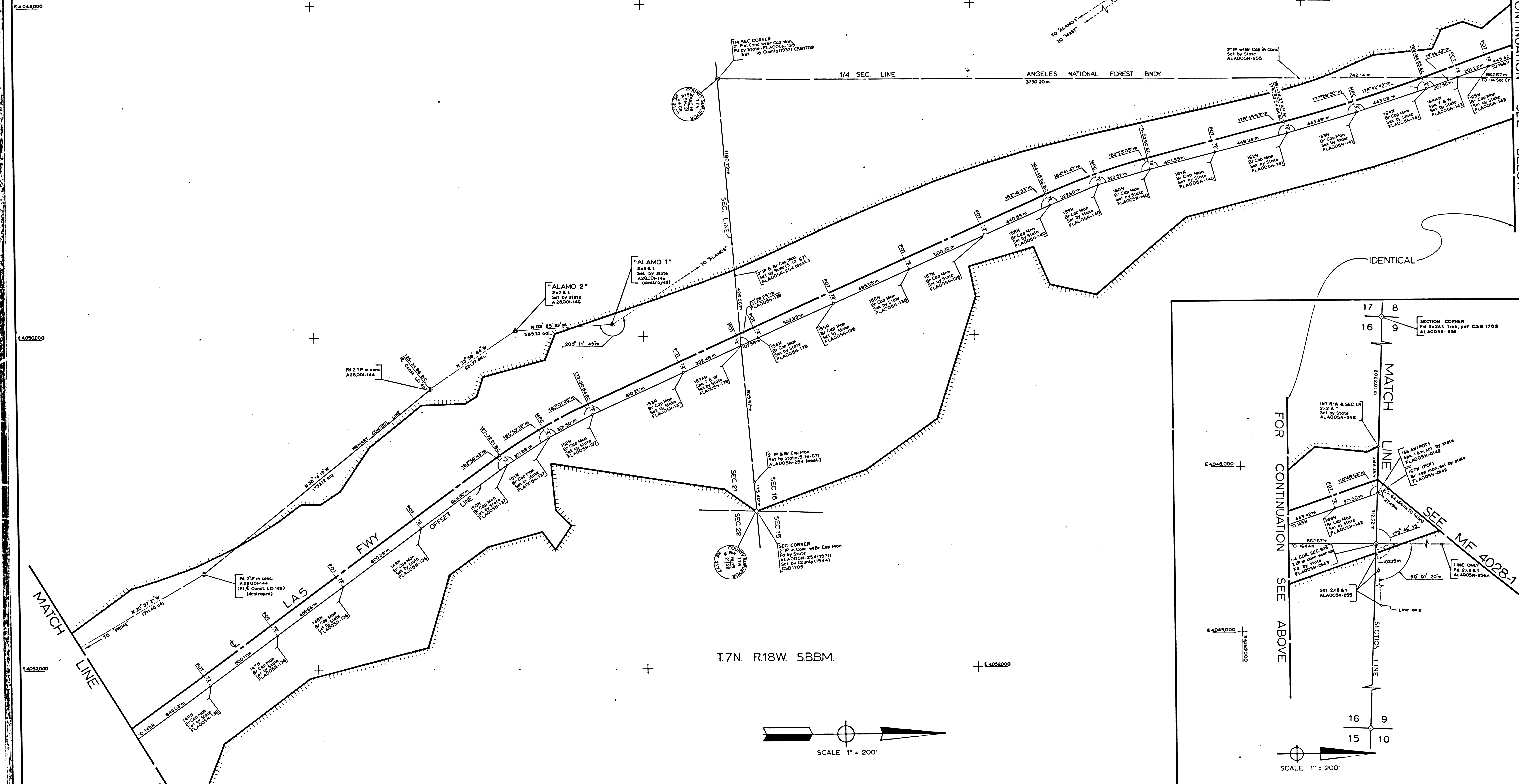
DISTRICT	COUNTY	ROUTE	POST MILES - TOTAL PROJECT	SHEET NO.	TOTAL SHEETS	DATE	NAME OF PARTY
07	LA	5	R745 - R780	1	2		W. DALE
STATE OF CALIFORNIA DIVISION OF HIGHWAYS SURVEYS							Checked by
MONUMENTATION MAP							R. BJORKLUND
DATUM: CALIFORNIA COORDINATE SYSTEM - ZONE 7							Project Engineer
MAP NO. 4022-1							E. DEMPSEY R. BJORKLUND
Survey Office Supervisor							E. GREENGARD
District Survey Engineer							F.A. MAAS
Reviewed & Recommended by							S.L. ELICKS
Checked by							
Date							

F.M. 21254-1

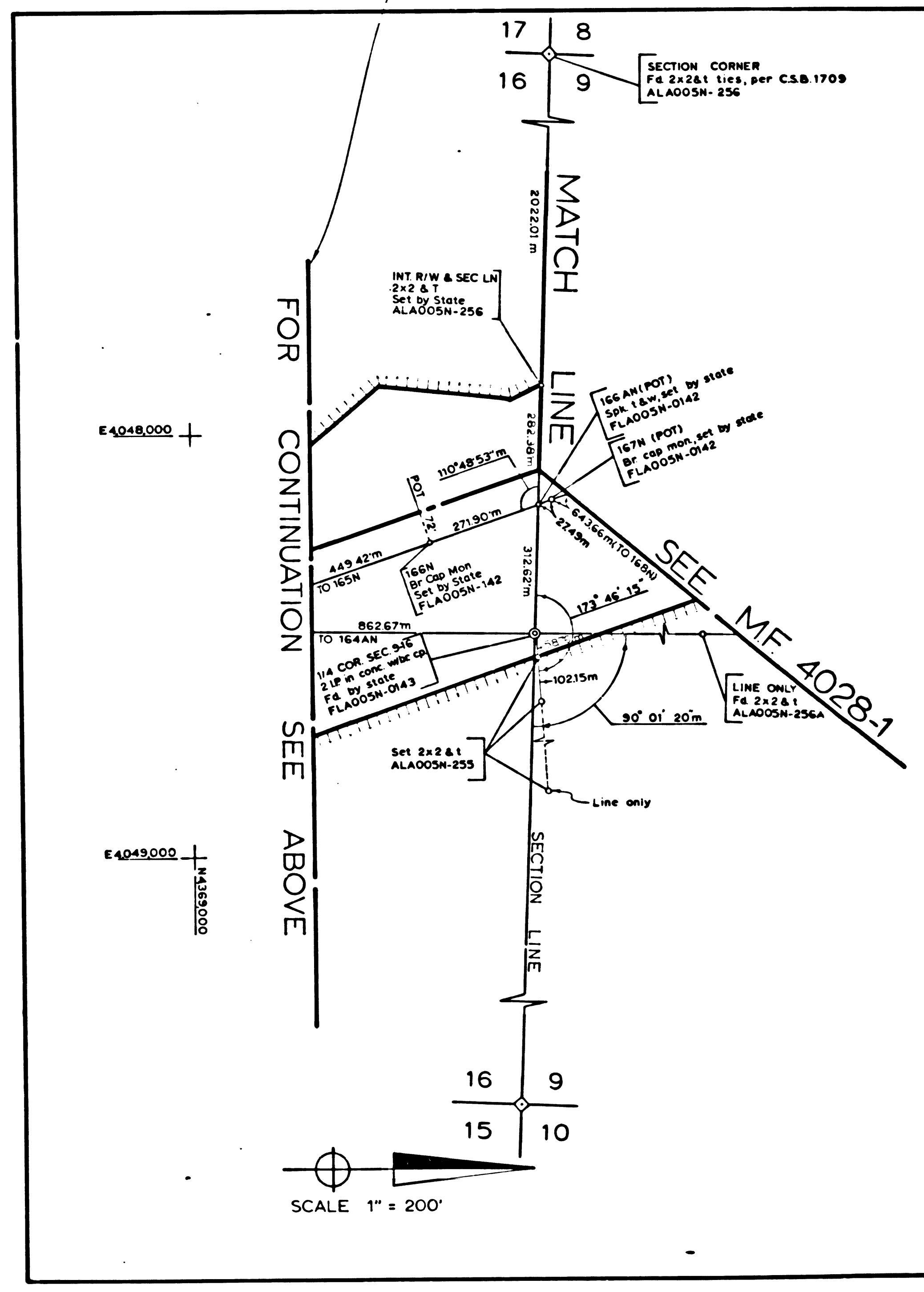
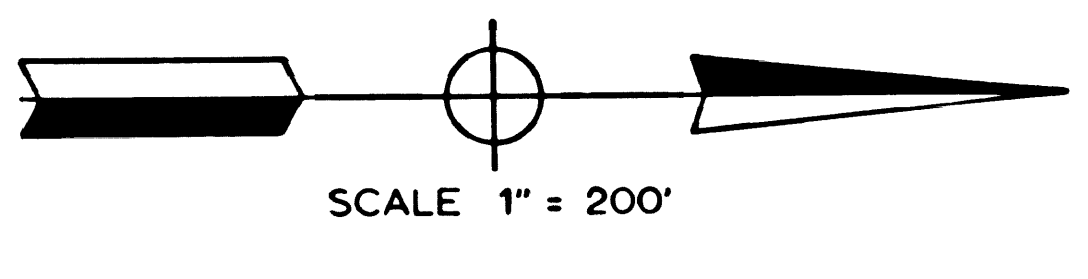
LOS ANGELES COUNTY

FOR CONTINUATION SEE BELOW

"ALAMOS"  
F&B cap mon in conc.  
M&E U.S. Geological Survey  
A28001-146 (7-62)



T.7N. R.18W. S.BBM.



IN LOS ANGELES COUNTY BETWEEN 10.3 MILES SOUTH OF ROUTE 138 & 6.8 MI. SO. OF ROUTE 138  
LA5 POST MILES R745 - R780  
CONSTRUCTION CONTRACT 07-049353  
MONUMENTATION MAP

Bearings are taken from State Coordinate Control Maps based on Sections 8801, 8808, 8811, 8814, 8815 of Division B of the 1953 Public Resources Code. CCM Numbers: 3011  
Division of Highways survey information is available from the Engineering Services Department, Los Angeles, California.  
Division of Highways right-of-way information is available at Right of Way Department, Los Angeles, California.

REFERENCES: FLA005N-0136 thru -0143  
ALA005N-0254-0255-0256  
R/W MAPS - F137 F1318  
AS BUILT PLANS  
CSB 1709  
A28001-144,146

DISTRICT	COUNTY	ROUTE	POST MILES - TOTAL PROJECT	SHEET NO.	TOTAL SHEETS	DATE
07	LA	5	R745 - R780	2	2	11-9-71
STATE OF CALIFORNIA						
DIVISION OF HIGHWAYS						
SURVEYS						
MONUMENTATION MAP						
DATUM CALIFORNIA COORDINATE SYSTEM - ZONE 7						
MAP NO. MF 4027-2						
 Barry Wilford, Deputy District Engineer						
Checked by: W. DALE Drawn by: B. BJORKLUND Project Engineer: S. DEMPSEY Survey Office Supervisor: F. ENOKI District Survey Engineer: E. L. GREENGARD District Engineer: F. A. MAAS District Engineer: S. L. ELICKS						

F.M. 21254-2