

SEE M.F. 4024-2

MATCH SEE M.F. 4037-2

IN LOS ANGELES COUNTY BETWEEN 0.6mi. N. OF PARKER RD. & 6.8mi. N. OF PARKER RD.

Bearings are taken from State Coordinate Control Maps based on sections B801, B808, B811, B814, B815 of division B of the 1953 Public Resources Code. CCM numbers: 2711

Division of Highways survey information is available from the Engineering Services Dept., Los Angeles, Cal.

Division of Highways right-of-way information is available from the Right of Way Department, Los Angeles, California.

- REFERENCES:
- FLA005N-0075 11/9-0080
 - 0146 11/9-0143
 - ALA005N-0443
 - A 27001-74
 - G 27001-5
 - C.S.B. 1224
 - R/W MAPS-F1331, F1312
 - AS BUILT PLANS

COUNTY

L.A.

LOS ANGELES CO FILE NO FM 21255-1

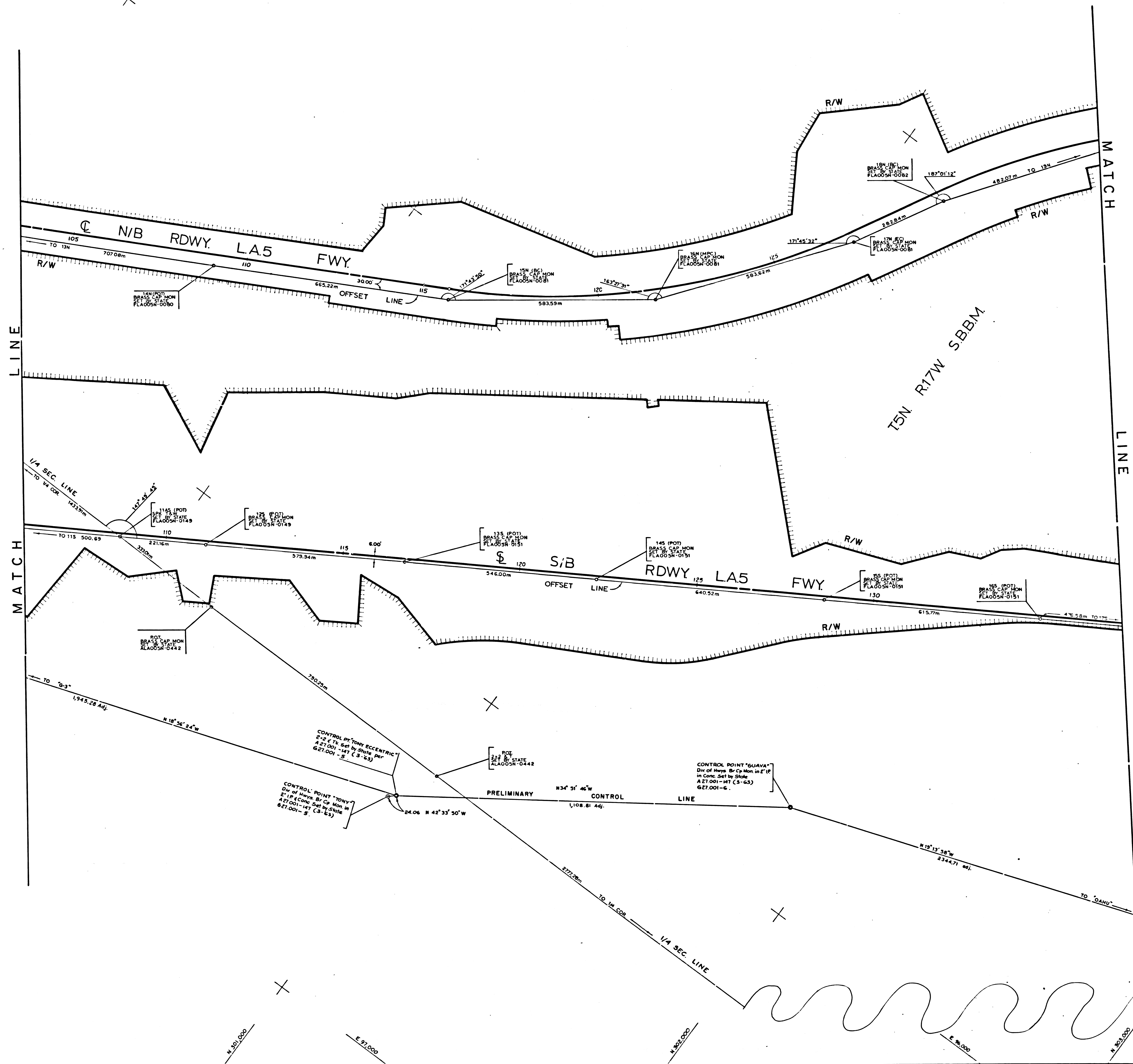
STATE OF CALIFORNIA	DIVISION OF HIGHWAYS	DATE	11-15-71
MONUMENTATION MAP		DATE	11-15-71
DATUS CALIFORNIA COORDINATE SYSTEM - ZONE 7		DATE	11-15-71
MAP NO. 4037-1		DATE	11-15-71
6961		DATE	11-15-71
C.E. 6961		DATE	11-15-71
W DALE		DATE	11-15-71
E DEMPSEY		DATE	11-15-71
E DEMPSEY		DATE	11-15-71
E L GREENGARD		DATE	11-15-71
F A MAAS		DATE	11-15-71
S L ELICKS		DATE	11-15-71

F.M. 21255-1

11-15-71

COUNTY OF LOS ANGELES

SCALE: 1"=100'



SEE M.F. 4037-1

SEE M.F. 4037-3

IN LOS ANGELES COUNTY BETWEEN 0.6mi. N. OF PARKER RD. & 6.8mi. N. OF PARKER RD.
 Bearings are taken from State Coordinate Control Maps based on sections 8801, 8808, 8811, 8814, 8815 of division 8 of the 1953 Public Resources Code. CCM numbers: 2711, 2722

Division of Highways survey information is available from the Engineering Services Dept., Los Angeles, Cal.
 Division of Highways right-of-way information is available from the Right of Way Department, Los Angeles, California.

REFERENCES: FLA005H-0080-0081-0149 thru-0151
 ALA005N-0442
 A27001-147
 G27005-56
 R/W MAP-F1313
 AS BUILT PLANS

LOS ANGELES CO FILE NO FM 21255-2

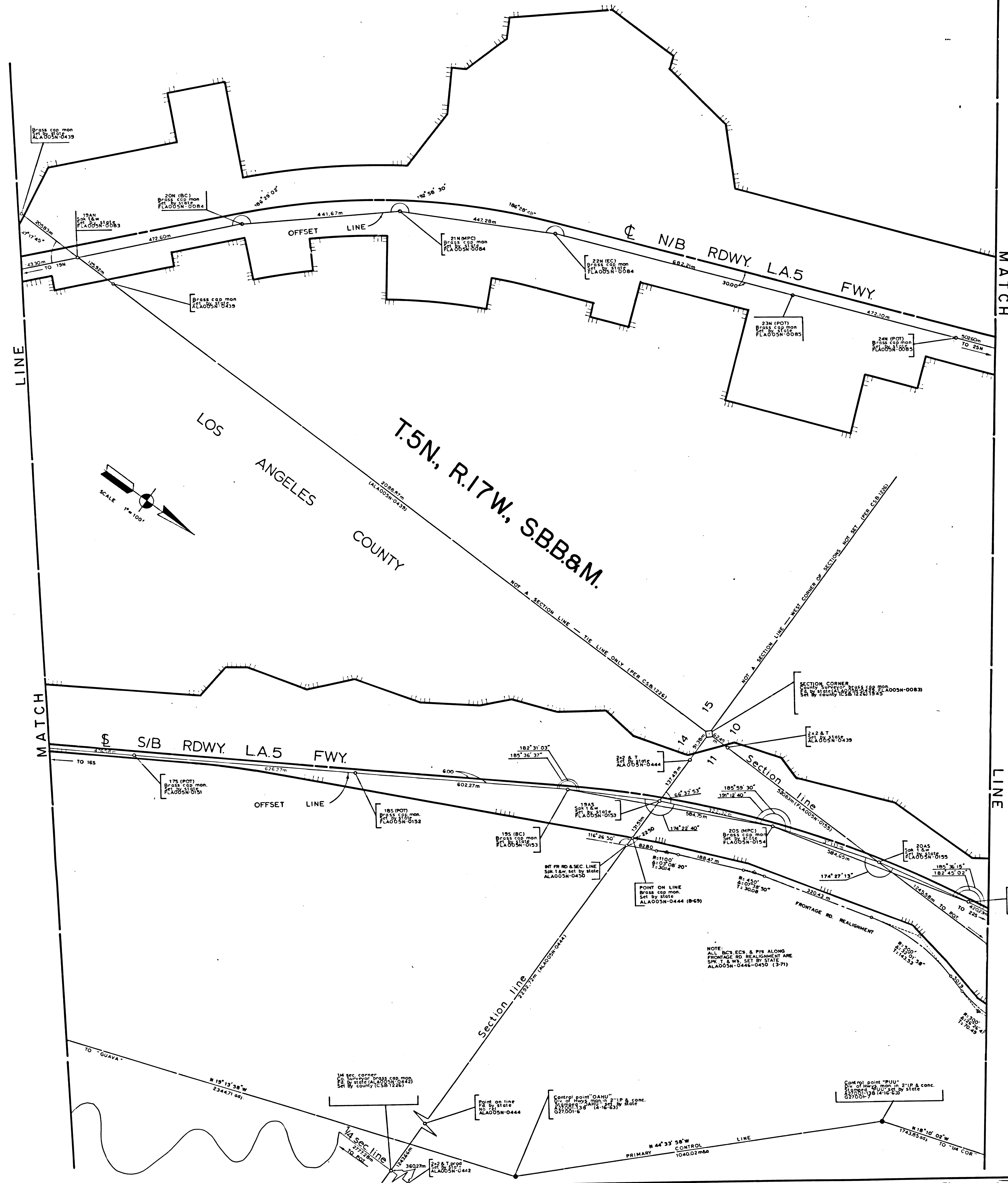
DISTRICT	COUNTY	ROUTE	POST MILES - TOTAL PROJECT	SHEET NO.	TOTAL SHEETS	DATE OF PART
07	LA	5	601 - 657	2	10	W. DALE
STATE OF CALIFORNIA			DIVISION OF HIGHWAYS		SURVEYS	
MONUMENTATION MAP			DATE: CALIFORNIA COORDINATE SYSTEM - ZONE 7		MAP NO. 4037-2	
6561			11-15-71		EL GREENGARD	
C.E. GOSSET			FA. MAAS		S.L. ELICKS	

F.M. 21255-2

SEE M.F. 4037-2

SEE M.F. 4037-4

SEE M.F. 4037-5



IN LOS ANGELES COUNTY BETWEEN 0.6mi.
N. OF PARKER RD. & 6.8mi. N. OF PARKER RD.

Bearings are taken from State Coordinate Control
Maps based on sections 8801, 8808, 8811, 8814, 8815
of division 8 of the 1953 Public Resources Code.
C.C.M. numbers: 2722

Division of Highways survey information is available
from the Engineering Services Dept., Los Angeles, Cal.

Division of Highways right of way information is
available from the Right of Way Department,
Los Angeles, California.

- REFERENCES:
- FLAOOSH-0083 thru 0085
 - " " 0151 thru 0155
 - ALAOOSH-0449, 0442, 0444, 0446 thru 0450
 - A27001-13B
 - G27001-67
 - C.S.B. 122E
 - R/W MAPS - F13131, F13132
 - AS BUILT PLANS

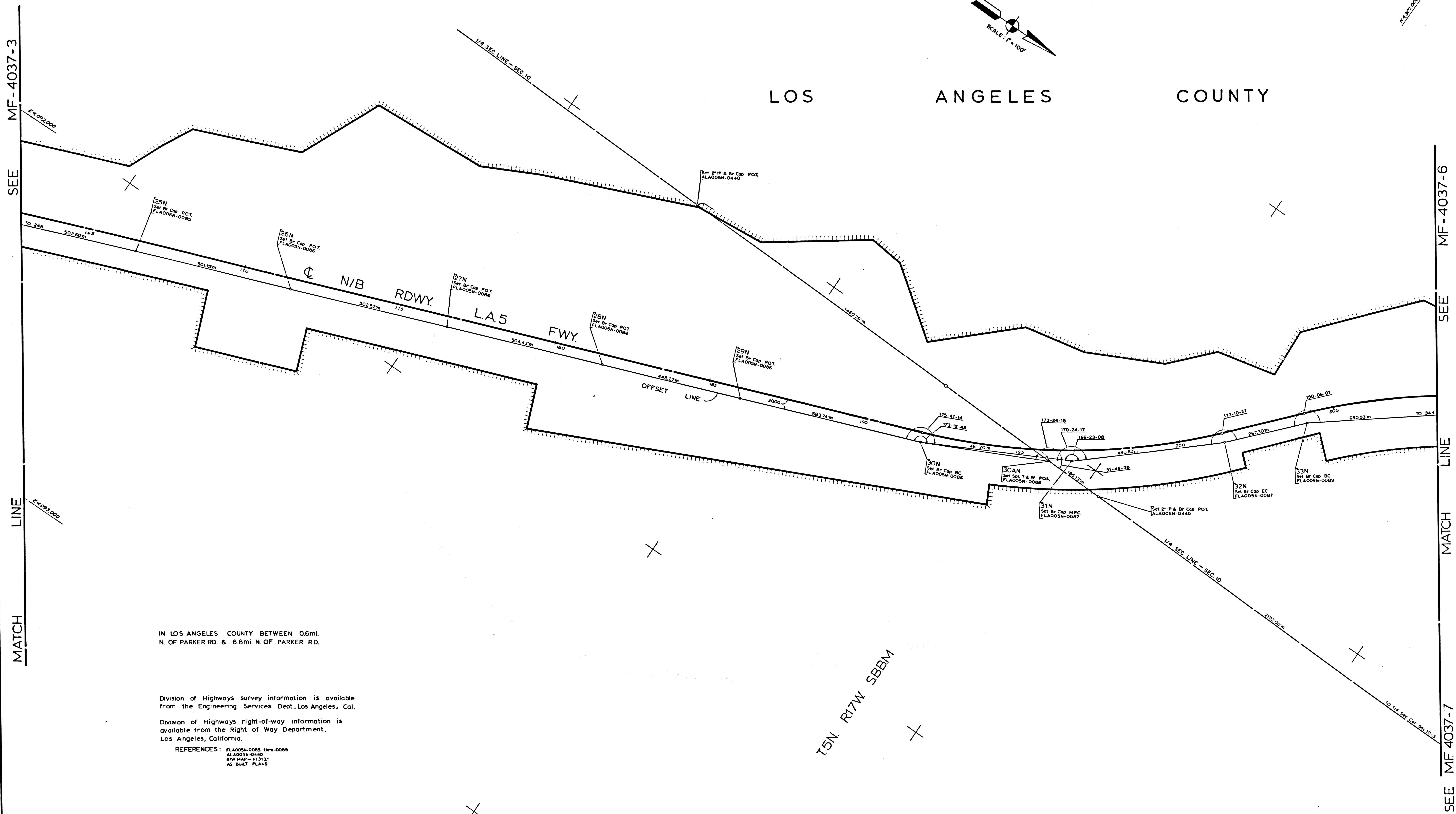
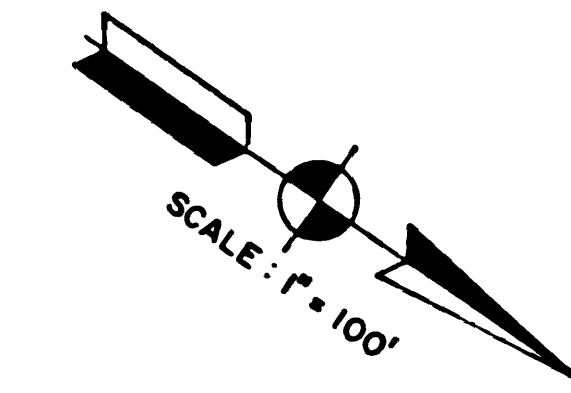
LOS ANGELES CO FILE NO FM 21255-3

DISTRICT	COUNTY	ROUTE	POST MILES - TOTAL PROJECT	DATE	NO. SHEETS	SHEET NO.
07	L.A.	5	601 - 657	3	110	110
STATE OF CALIFORNIA						
SURVEYS DIVISION OF HIGHWAYS						
Project Engineer	Checked by	W. DALE				
E. DEMPSEY	BJORKLUND	E. DEMPSEY				
Survey District Supervisor	Dist. Engineer	E. DEMPSEY BJORKLUND				
EL GREENGARD	F.A. MAAS	EL GREENGARD				
Survey Date	Date	11-15-71				
C.E. 6961	Survey District Engineer	F.A. MAAS				
Approved & Recommended by	Checked & Approved by	S.L. ELICKS				

F.M. 21255-3

E-7E04

LOS ANGELES COUNTY



IN LOS ANGELES COUNTY BETWEEN 0.6mi.
N. OF PARKER RD. & 6.8mi. N. OF PARKER RD.

Division of Highways survey information is available
from the Engineering Services Dept., Los Angeles, Cal.

Division of Highways Right-of-way information is
available from the Right of Way Department,
Los Angeles, California.

REFERENCES: FLA005N-0085 11-11-71
ALA005N-0440
RW MAP - F1313
AS BUILT PLANS

LOS ANGELES CO FILE NO FM 21255-4

DISTRICT	COUNTY	ROUTE	POST MILES - TOTAL PROJECT	SHEET NO.	TOTAL SHEETS
07	LA	5	RG01 - R657	4	10
STATE OF CALIFORNIA DIVISION OF HIGHWAYS SURVEYS					
MONUMENTATION MAP			DATUM CALIFORNIA COORDINATE SYSTEM - ZONE 7		
MAP NO. MF-4037-4					
Drawn by	E. L. GREENGARD		Date	11-15-71	
Checked by	F. A. MAAS		Date		
Approved by	S. L. ELICKS		Date		

SEE MF-4037-5

F.M. 21255-4

4-5804

FM 21255-4-7E

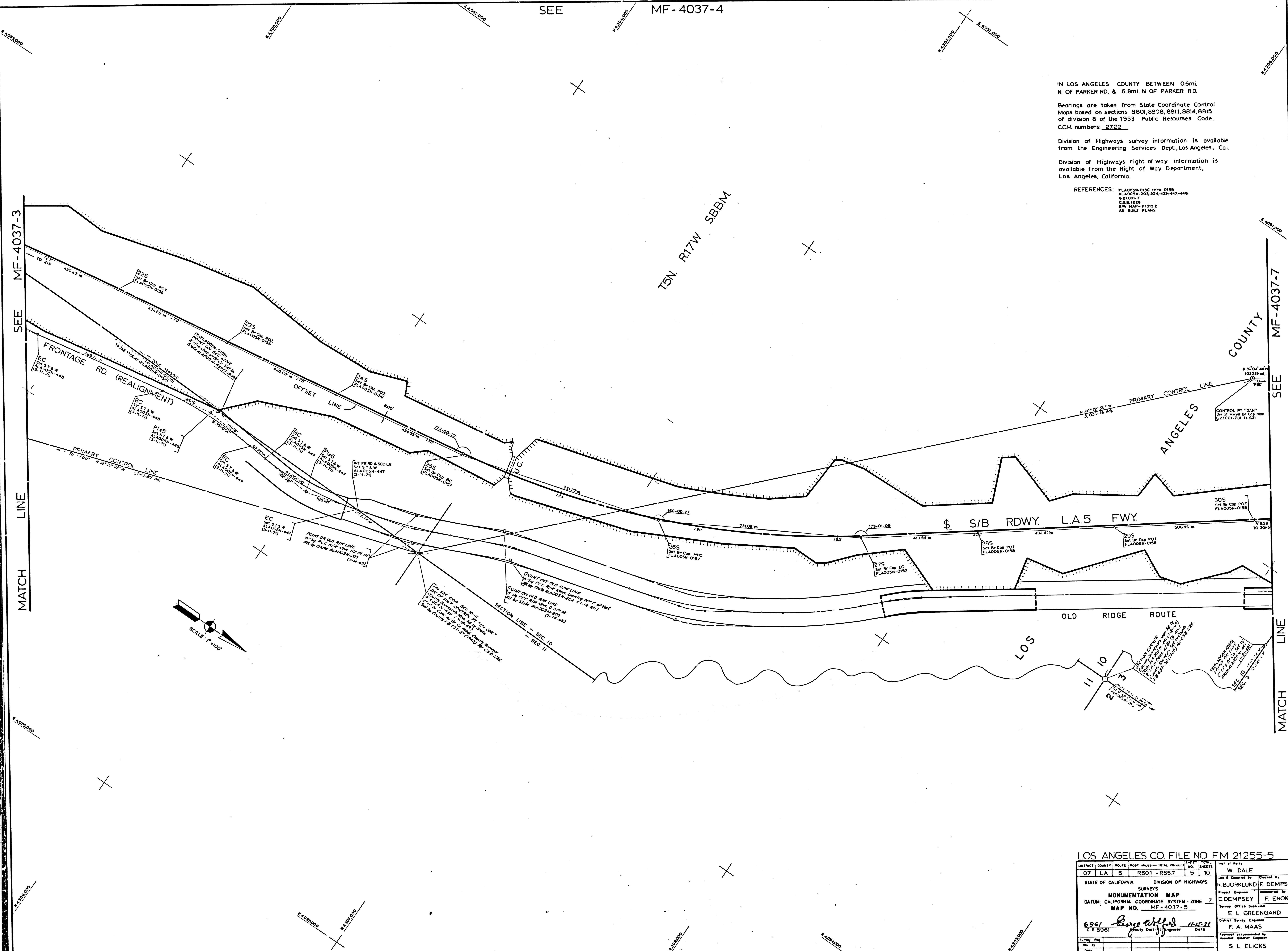
IN LOS ANGELES COUNTY BETWEEN 0.6mi. N. OF PARKER RD. & 6.8mi. N. OF PARKER RD.

Bearings are taken from State Coordinate Control Maps based on sections 8801, 8808, 8811, 8814, 8815 of division 8 of the 1953 Public Resources Code. CCM numbers: 2722

Division of Highways survey information is available from the Engineering Services Dept., Los Angeles, Cal.

Division of Highways right of way information is available from the Right of Way Department, Los Angeles, California.

REFERENCES: FLA005N-0156 thru-0158
ALA005N-203,204,435,442,448
G 27001-7
C.S.B. 1236
R/W MAP-P-1213 E
AS BUILT PLANS

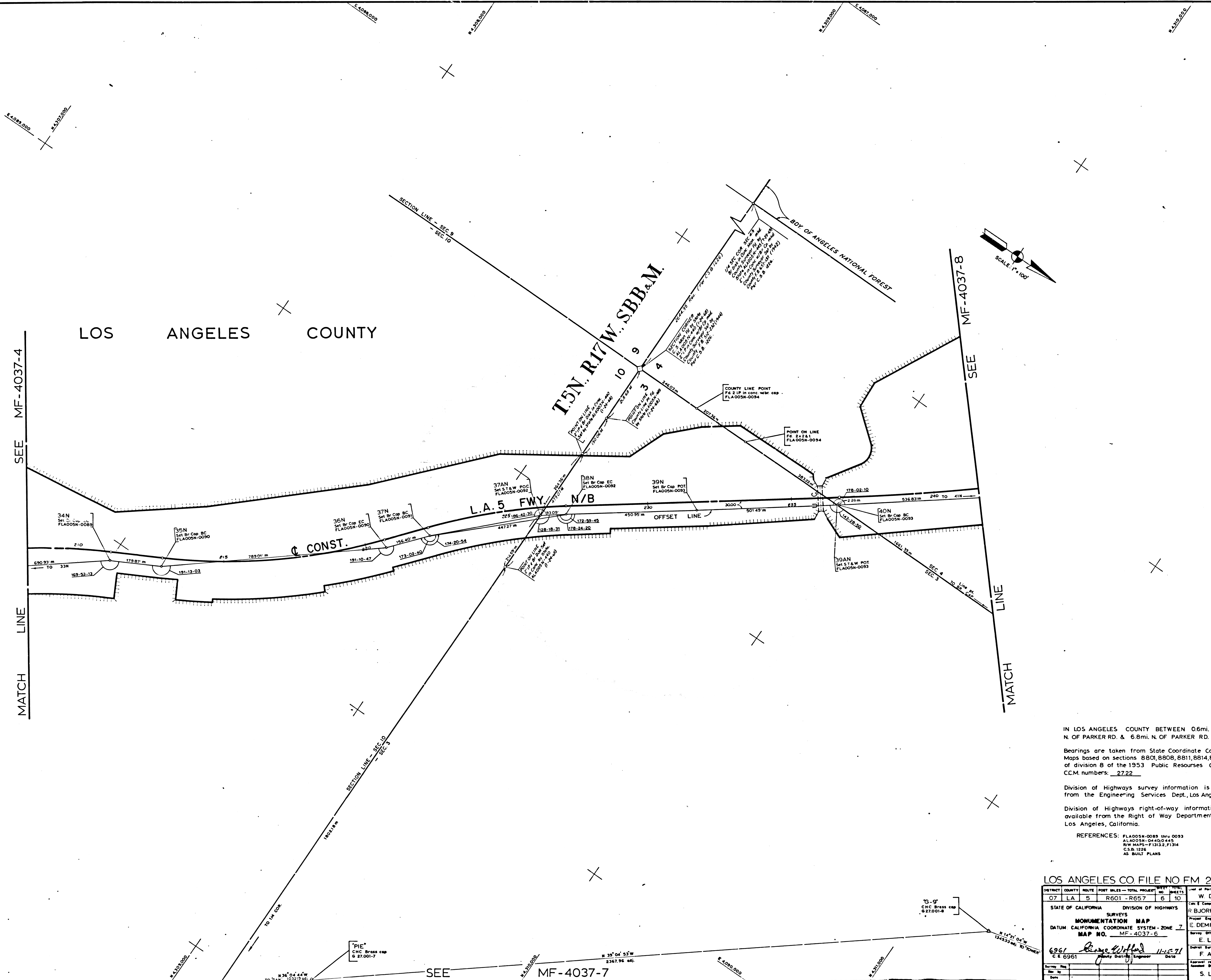


LOS ANGELES CO FILE NO FM 21255-5

DISTRICT	COUNTY	ROUTE	POST MILES - TOTAL PROJECT	SHEETS	NO.	DATE
07	LA	S	R601 - R657	5	10	W DALE
STATE OF CALIFORNIA DIVISION OF HIGHWAYS						
SURVEYS			Checked by: R. BJORKLUND, E. DEMPSEY			
MONUMENTATION MAP			Project Engineer: E. DEMPSEY, F. ENOKI			
DATUM: CALIFORNIA COORDINATE SYSTEM - ZONE 7			Survey Office Supervisor: E. L. GREENGARD			
MAP NO. MF-4037-5			District Survey Engineer: F. A. MAAS			
6961 <i>[Signature]</i> 11/27/51			Approved and recommended by: S. L. ELICKS			
C. E. 6961			Date			

F.M. 21255-5

FM 21255-5 2-5804



IN LOS ANGELES COUNTY BETWEEN 0.6mi.
N. OF PARKER RD. & 6.8mi. N. OF PARKER RD.

Bearings are taken from State Coordinate Control
Maps based on sections 8801,8808,8811,8814,8815
of division 8 of the 1953 Public Resources Code.
CCM numbers: 2722

Division of Highways survey information is available
from the Engineering Services Dept., Los Angeles, Cal.

Division of Highways right-of-way information is
available from the Right of Way Department,
Los Angeles, California.

REFERENCES: FLA005N-0089 thru 0093
ALA005N-04400-445
R/W MAPS-F1312, F1314
C.S.B. 1226
AS BUILT PLANS

LOS ANGELES CO FILE NO FM 21255-6

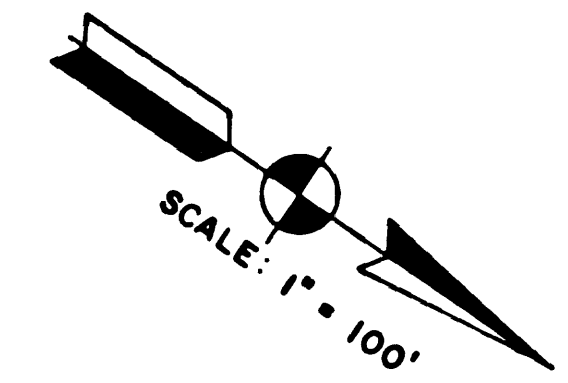
DISTRICT	COUNTY	ROUTE	POST MILES - TOTAL PROJECT	SHEET NO.	TOTAL SHEETS	DATE OF PLY
07	LA	5	R601-R657	6	10	W DALE
STATE OF CALIFORNIA DIVISION OF HIGHWAYS						Checked by
SURVEYS						R BJORKLUND
MONUMENTATION MAP						Project Engineer
DATUM CALIFORNIA COORDINATE SYSTEM - ZONE 7						E DEMPSEY
MAP NO. MF-4037-6						Checked by
6961						E L GREENGARD
C.E. 6961						Survey of this Department
Date						F.A. MAAS
Date						Approved
Date						S. L. ELICKS

F.M. 21255-6

2-7E04

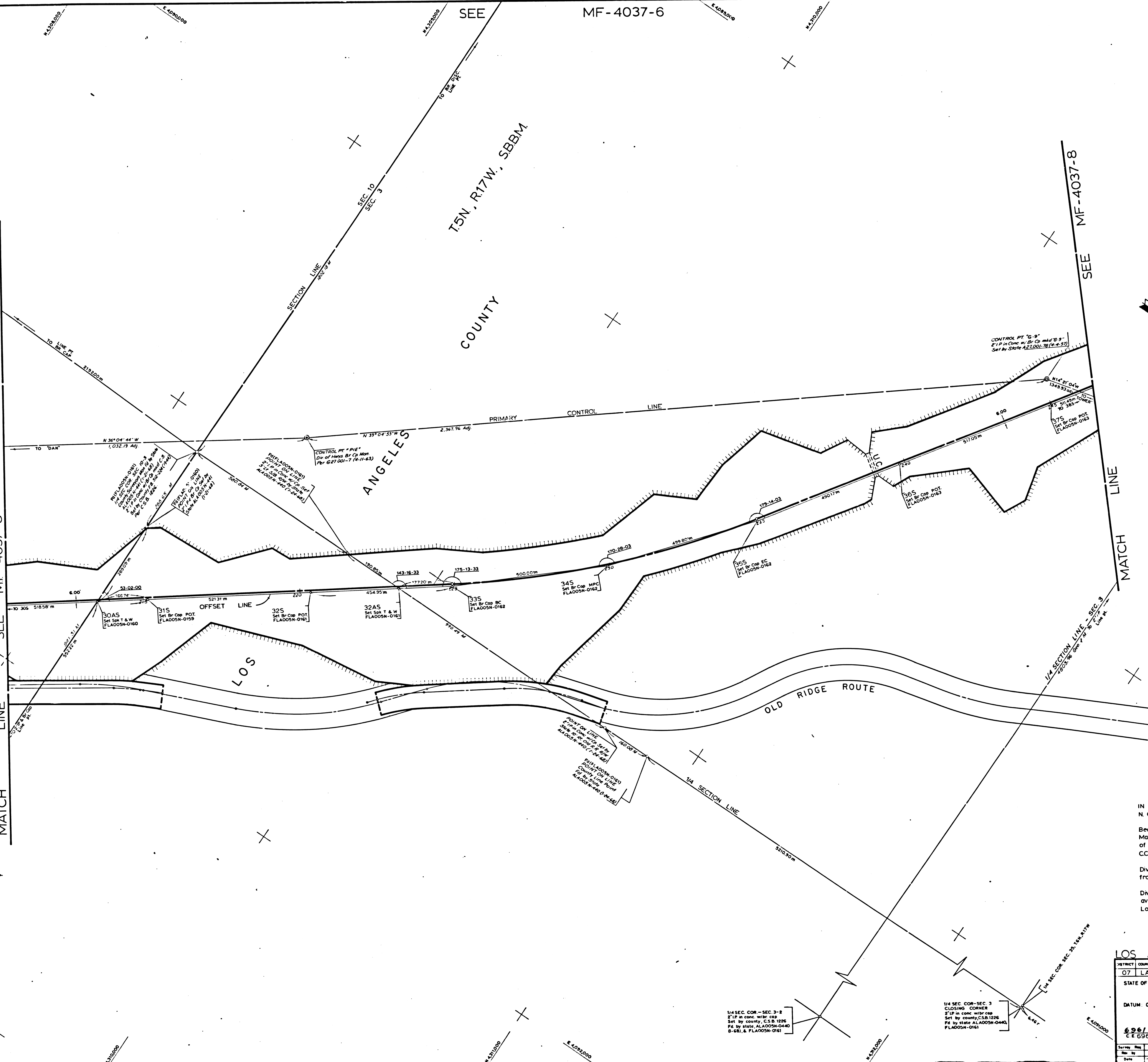
4037-6

ANGELES COUNTY
T5N, R17W, SBBM



MATCH LINE SEE MF-4037-4
SEE MF-4037-5
MATCH LINE

SEE MF-4037-8
MATCH LINE



IN LOS ANGELES COUNTY BETWEEN 0.6mi.
N. OF PARKER RD. & 6.8mi. N. OF PARKER RD.
Bearings are taken from State Coordinate Control
Maps based on sections 8801, 8806, 8811, 8814, 8815
of division B of the 1953 Public Resources Code.
CCM numbers: 2722
Division of Highways survey information is available
from the Engineering Services Dept., Los Angeles, Cal.
Division of Highways right-of-way information is
available from the Right of Way Department,
Los Angeles, California.
REFERENCES: FLADOSH-0159 thru-0163
ALADOSH-0440, 0441
A2700-78
G2700-7
C&R 122E
RAW MAP - F3124, F13132
AS BUILT PLANS

LOS ANGELES COUNTY FILE NO FM 21255-7

DISTRICT	COUNTY	ROUTE	POST MILES - TOTAL PROJECT	SHEET NO.	SHEETS	DATE
07	LA	5	R601 - R657	7	10	11-15-71

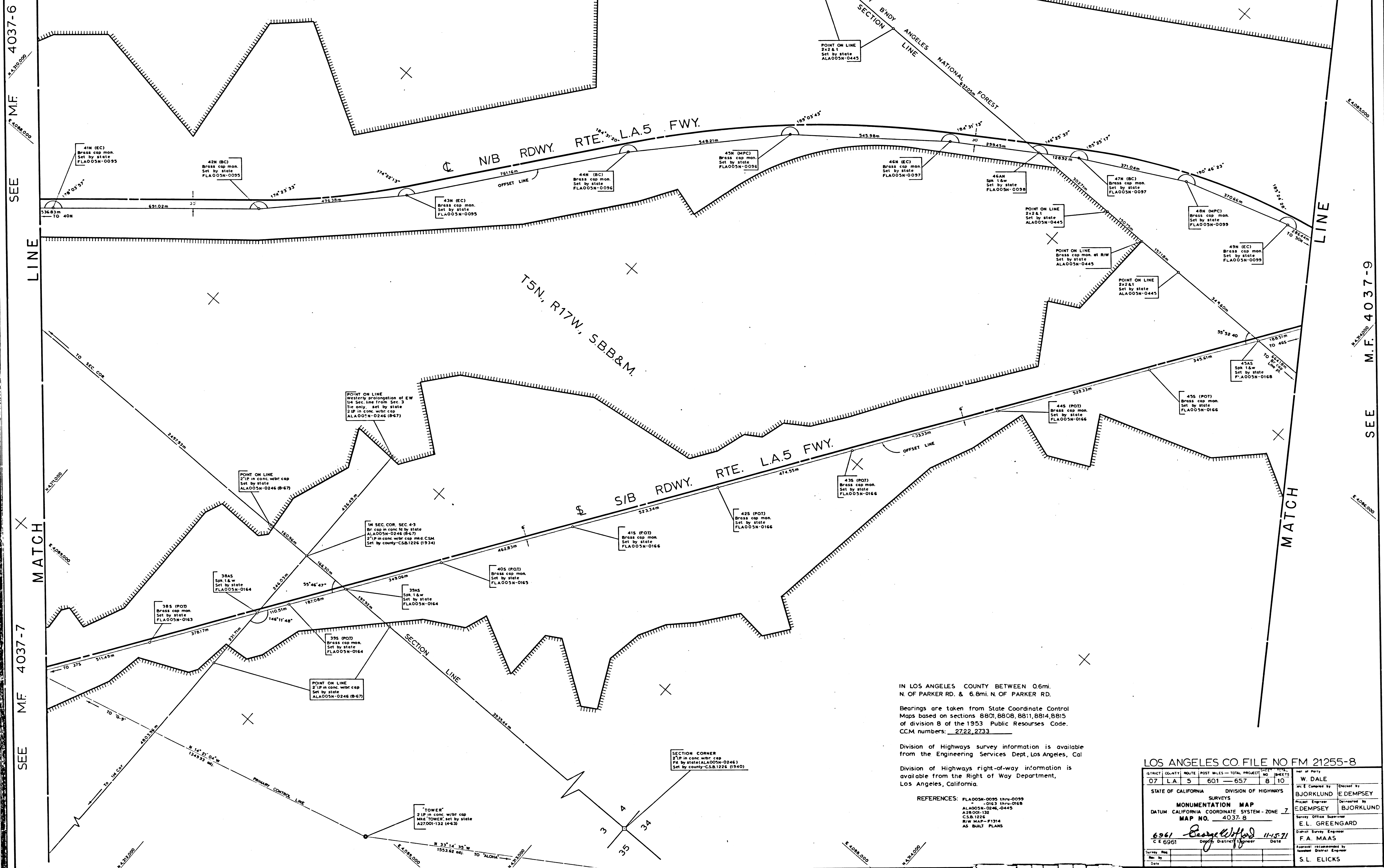
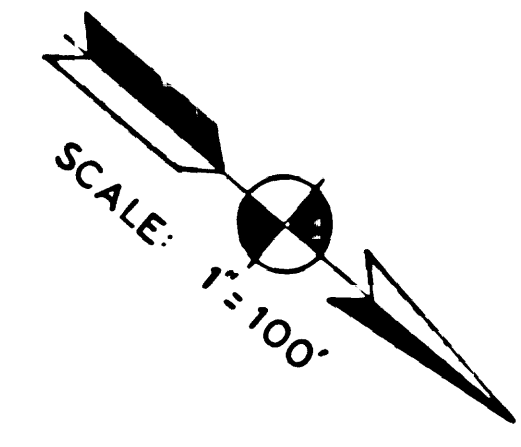
STATE OF CALIFORNIA DIVISION OF HIGHWAYS
MONUMENTATION MAP
DATUM CALIFORNIA COORDINATE SYSTEM - ZONE 7
MAP NO. MF-4037-7
C.E. 6961
DATE 11-15-71
BY F.A. MAAS
CHECKED BY S.L. ELICKS

F.M. 21255-7

4037-5

4037-5

LOS ANGELES COUNTY



IN LOS ANGELES COUNTY BETWEEN 0.6mi.
N. OF PARKER RD. & 6.8mi. N. OF PARKER RD.

Bearings are taken from State Coordinate Control
Maps based on sections 8801, 8808, 8811, 8814, 8815
of division 8 of the 1953 Public Resources Code.
CCM numbers: 2722, 2733

Division of Highways survey information is available
from the Engineering Services Dept., Los Angeles, Cal

Division of Highways right-of-way information is
available from the Right of Way Department,
Los Angeles, California.

REFERENCES: FLA005N-0095 11/14/0099
" " " " 0163 11/14/0168
ALA005N-0246, -0445
A38001-132
CSB 1226
RW MAP #F214
AS BUILT PLANS

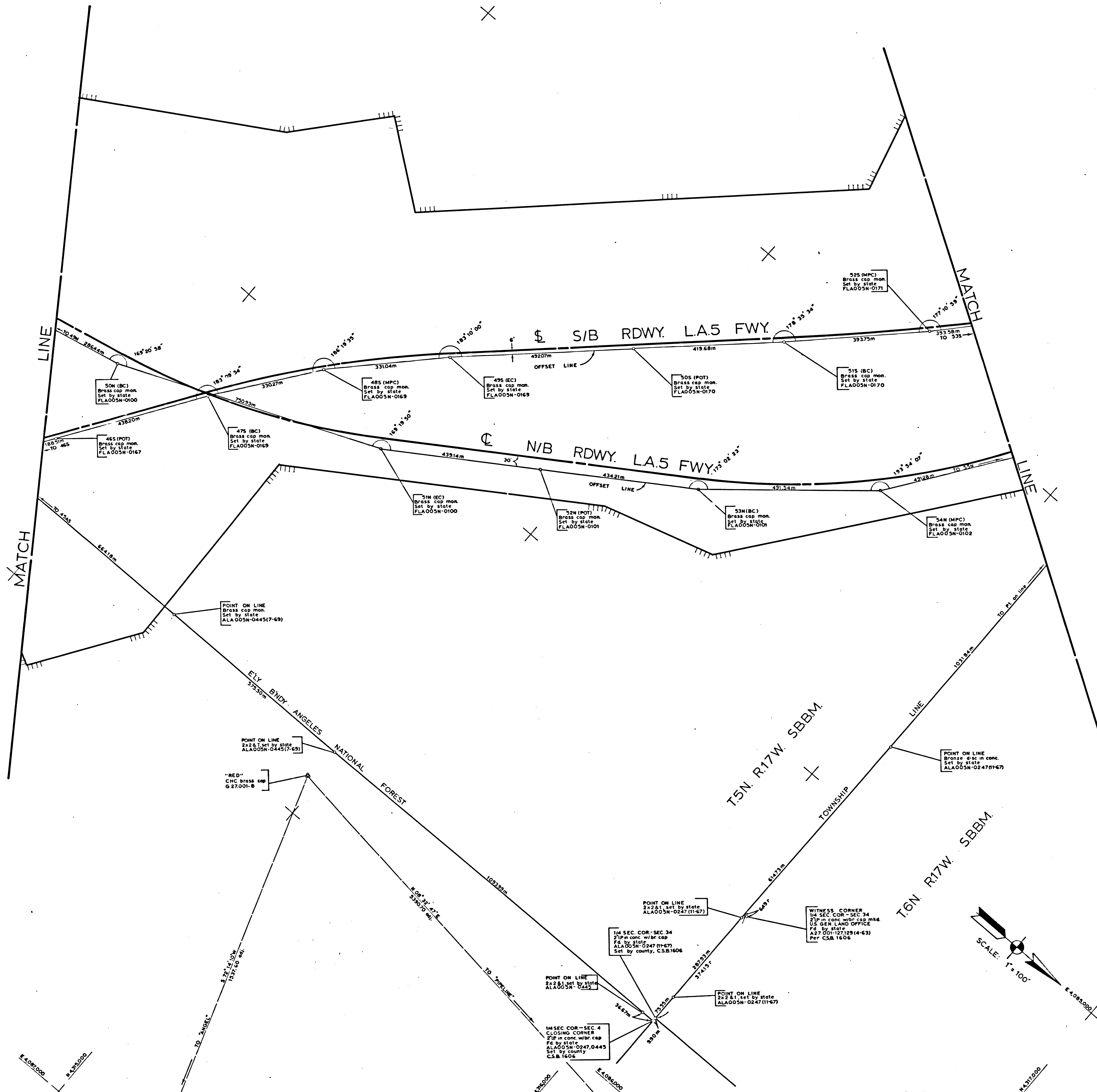
LOS ANGELES CO. FILE NO FM 21255-8

DISTRICT COUNTY ROUTE POST MILES - TOTAL PROJECT		NO. SHEETS	
07	LA 5	601 - 657	8 10
STATE OF CALIFORNIA DIVISION OF HIGHWAYS			
SURVEYS		MONUMENTATION MAP	
DATUM CALIFORNIA COORDINATE SYSTEM - ZONE 7			
MAP NO. 4037-8			
6961	George Wilford	11-15-71	Date
C E 6961	Deputy District Engineer		
Checked by		Checked by	
W. DALE		B. BJORKLUND	
E. EDEMPSEY		E. EDEMPSEY	
E. L. GREENGARD		F. A. MAAS	
S. L. ELICKS			

F.M. 21255-8

4037-8

LOS ANGELES COUNTY

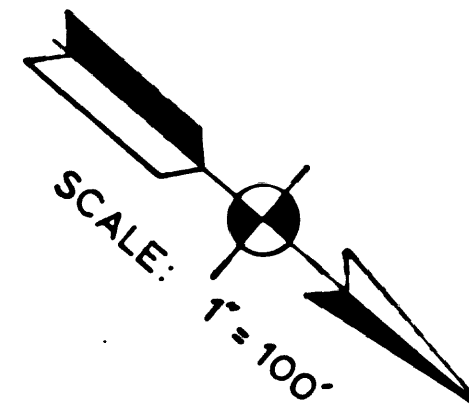


SEE MF 4037-8

SEE MF 4037-10

IN LOS ANGELES COUNTY BETWEEN 0.6mi. N. OF PARKER RD. & 6.8mi. N. OF PARKER RD.
 Bearings are taken from State Coordinate Control Maps based on sections 8801, 8808, 8811, 8814, 8815 of division 8 of the 1953 Public Resources Code. CCM numbers: 2733
 Division of Highways survey information is available from the Engineering Services Dept., Los Angeles, Cal.
 Division of Highways right-of-way information is available from the Right of Way Department, Los Angeles, California.

REFERENCES: FLA005N-0100 thru-0102, 0167 thru-0171, ALA005N-0247 & -0445, A1700N-1127 & -1129, G2700N-8, C.S.B. 1606, RW MAP - F1314, AS BUILT PLANS



LOS ANGELES CO FILE NO FM 21255-9

DISTRICT	COUNTY	ROUTE	POST MILES	TOTAL PROJECT	NO SHEETS	DATE
07	LA	5	60.1	65.7	9	10
STATE OF CALIFORNIA DIVISION OF HIGHWAYS						
SURVEYS						
MONUMENTATION MAP						
DATUM: CALIFORNIA COORDINATE SYSTEM - ZONE 7						
MAP NO. 4037-9						
6961	[Signature]		11-15-71	Date		
C E 6961	[Signature]		11-15-71	Date		
Survey No.	[Signature]		11-15-71	Date		
Map No.	[Signature]		11-15-71	Date		
Date	[Signature]		11-15-71	Date		

W. DALE
 R. BJORKLUNDE DEMPSEY
 E. DEMPSEY
 R. BJORKLUND
 E. L. GREENGARD
 F. A. MAAS
 S. L. ELICKS

F.M. 21255-9

P-7804

4037-9

LOS ANGELES COUNTY

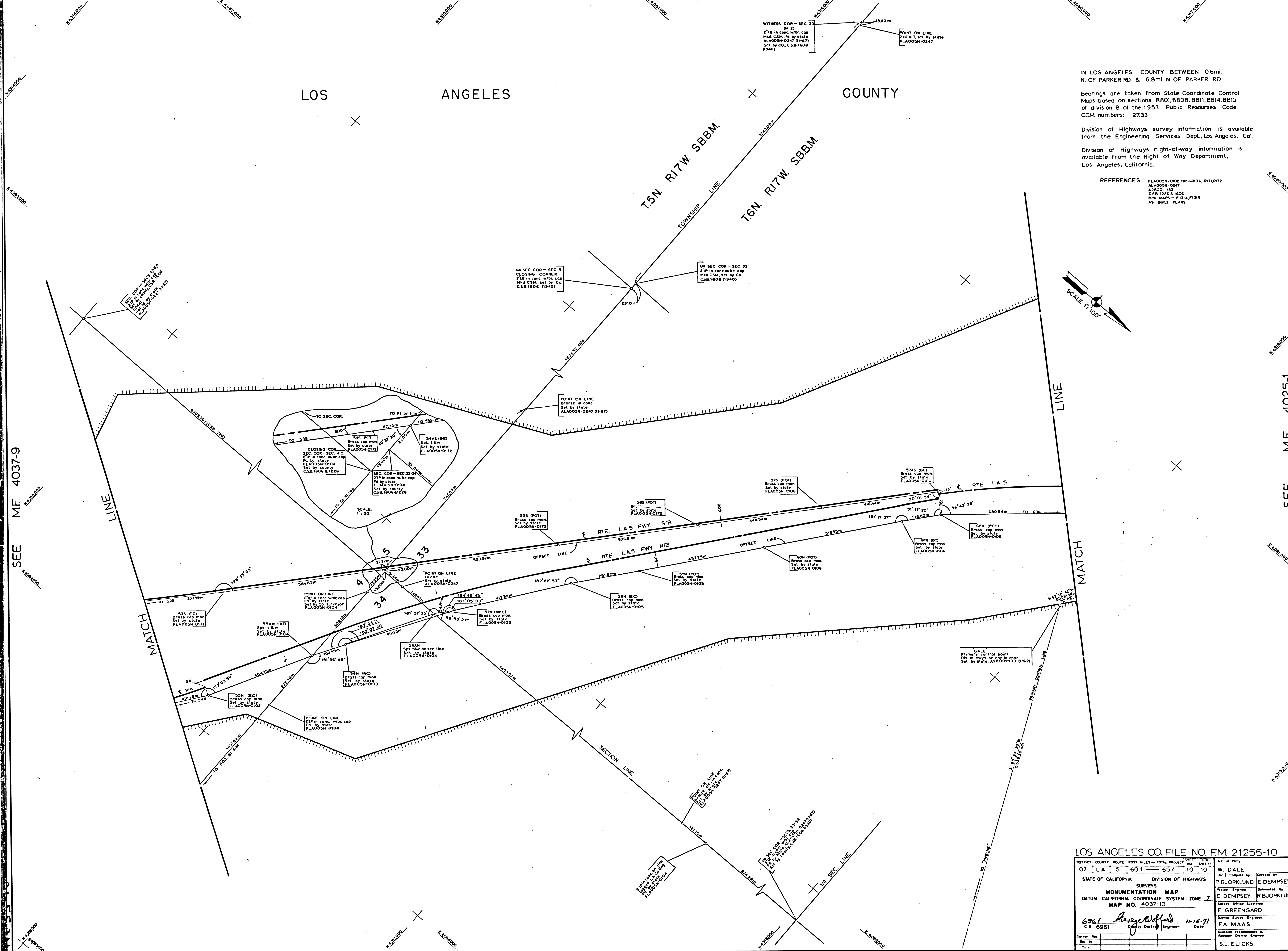
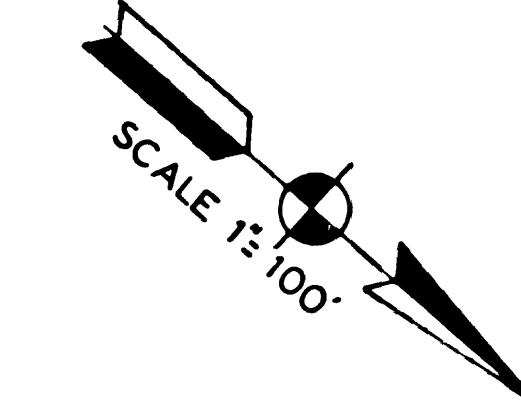
IN LOS ANGELES COUNTY BETWEEN 0.6mi.
N. OF PARKER RD & 6.8mi N OF PARKER RD.

Bearings are taken from State Coordinate Control
Maps based on sections 8801, 8808, 8811, 8814, 8815
of division B of the 1953 Public Resources Code.
CCM numbers: 2733

Division of Highways survey information is available
from the Engineering Services Dept., Los Angeles, Cal.

Division of Highways right-of-way information is
available from the Right of Way Department,
Los Angeles, California.

REFERENCES: FLA005N-0102 thru-0106, 011, 012
ALA005N-0247
A2800N-133
CSB 1226 & 1606
R/W MAPS - F1234, F1235
AS BUILT PLANS



SEE MF 4037-9

SEE MF 4025-1

LOS ANGELES CO. FILE NO FM 21255-10

DISTRICT	COUNTY	ROUTE	POST MILES - TOTAL PROJECT	SHEET NO.	TOTAL SHEETS	DATE OF SURVEY
07	LA	5	601 - 657	10	10	11-15-71
STATE OF CALIFORNIA DIVISION OF HIGHWAYS						
SURVEYS			W. DALE			
MONUMENTATION MAP			as E. Checked by R. BJORKLUND E. DEMPSEY			
DATUM CALIFORNIA COORDINATE SYSTEM - ZONE Z			Project Engineer E. DEMPSEY Devised by R. BJORKLUND			
MAP NO. 4037-10			Survey Office Supervisor E. GREENGARD			
6961			Survey Engineer F.A. MAAS			
C.E. 6961			Approved: (Signature) Date 11-15-71			
Survey Map			Assistant District Engineer S.L. ELICKS			
Date						

F.M. 21255-10