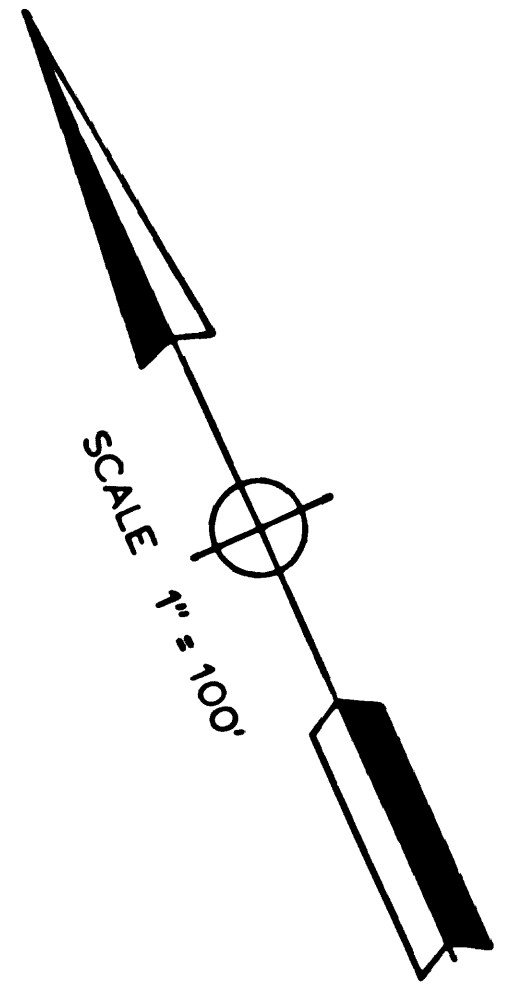
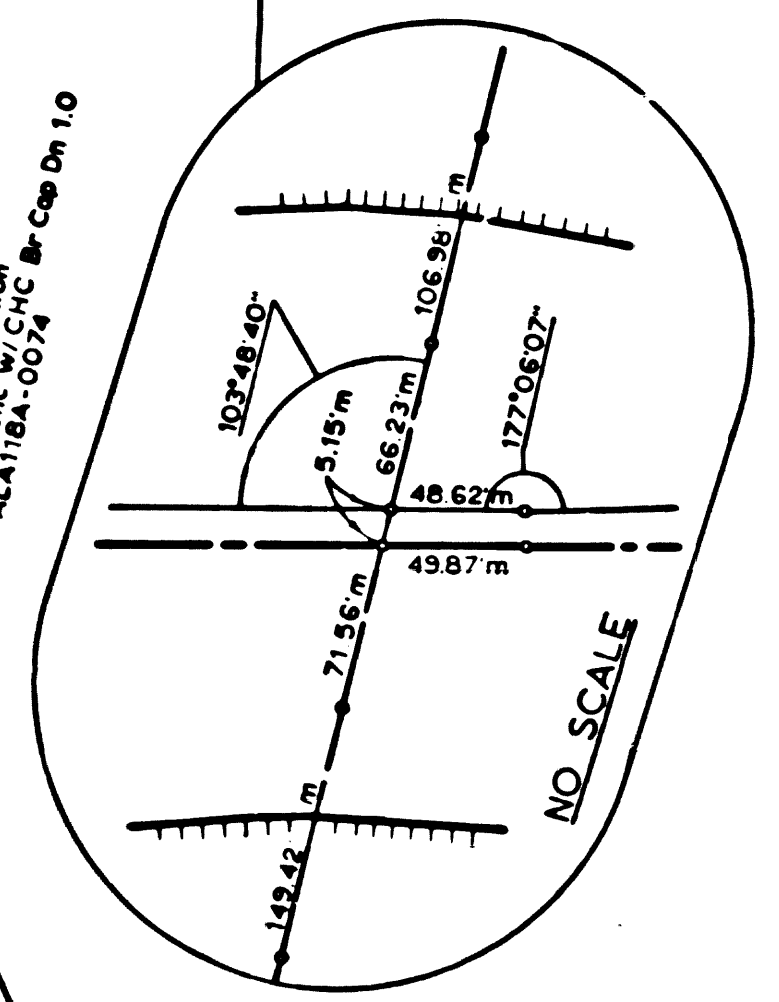
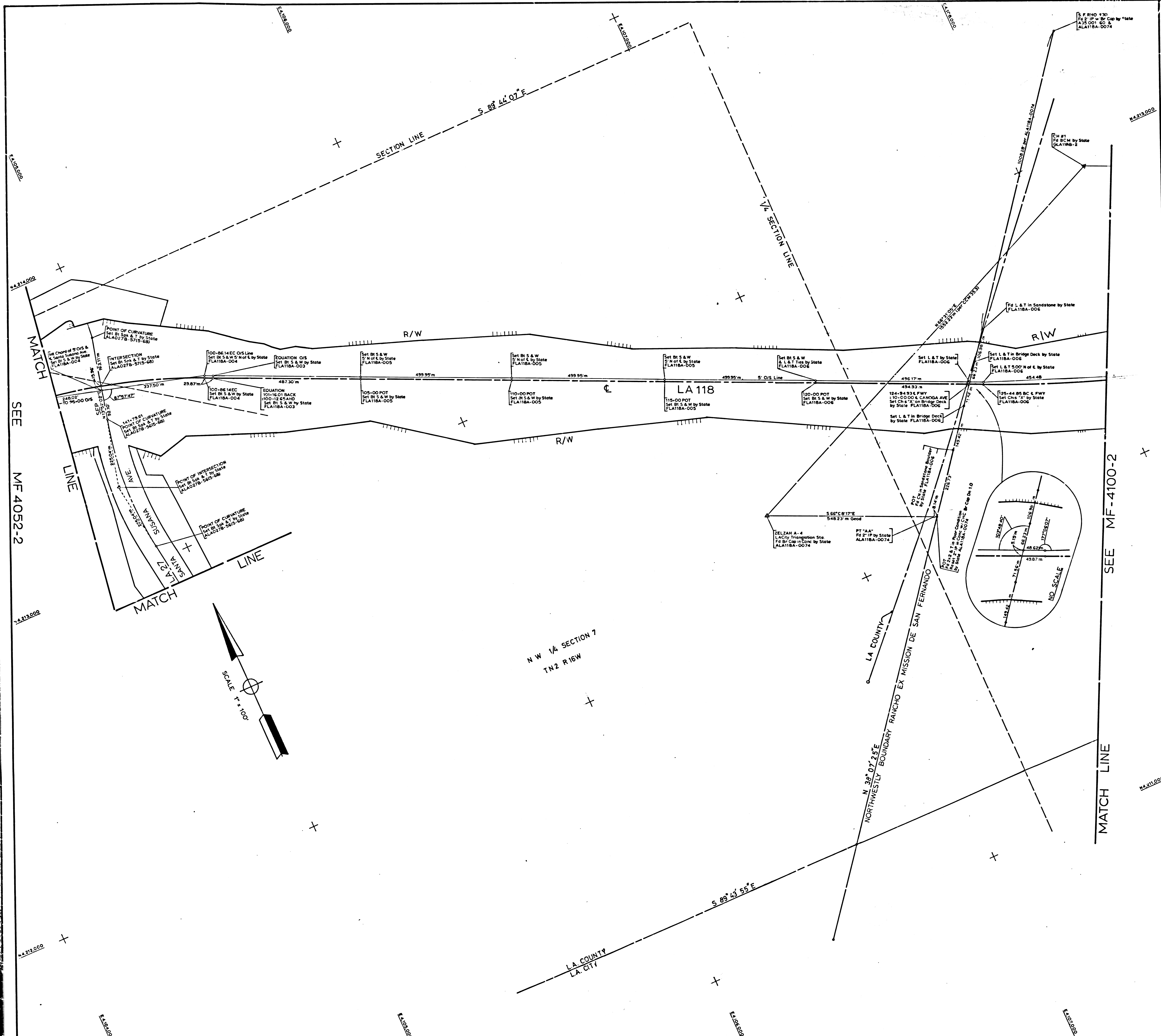


IN LOS ANGELES COUNTY BETWEEN SANTA SUSANA AVE. TO 0.1 MILE EAST OF DE SOTO AVE.  
 LA-118 Post Mile R18 TO R31  
 Construction Contract 07-022873  
 Final Monumentation Map

Bearings are taken from State Coordinate Control Maps based on Sections 8801, 8808, 8811, 8814, 8815 of Division 8 of the 1953 Public Resources Code. CCM Numbers 352, 353

Division of Highways survey information is available from the Engineering Services Department, Los Angeles, California.

Division of Highways right-of-way information is available at Right of Way Department, Los Angeles, California.



STREET	COUNTY	ROUTE	POST MILES - TOTAL PROJECT	POST MILE	DATE	BY
07 LA 118		R18-R31	1 2			C. M. MATHEWS
STATE OF CALIFORNIA DIVISION OF HIGHWAYS						Checked by
SURVEYS						E. DEMPSEY E. DEMPSEY
MONUMENTATION MAP						Project Engineer
DATUM CALIFORNIA COORDINATE SYSTEM - ZONE 7						E. DEMPSEY F. ENOKI
MAP NO. MF-4100-1						Survey Office Supervisor
6961						E. L. GREENGARD
C.E. <i>George Wolford</i>						District Survey Engineer
Date 12-1-71						F. A. MAAS
Approved/Recommended by						S. L. ELICKS
Date						

MF 4100-1

F.M. 21258-1

F.M. 21258-1 1-0014 MF

IN LOS ANGELES COUNTY BETWEEN SANTA SUSANA  
 A/E P. 01 MILE EAST OF DE SOTO AVE.

LA-1111 Post Mile R1.8 TO R31  
 Construction Contract 07-022B73  
 No. Monumentation Map

Bearings are taken from State Coordinate Control Maps based  
 on Sections 8801, 8808, 8811, 8814, 8815 of Division 8 of the  
 1953 Public Resources Code CCM Numbers 35.2, 35.3

Division of Highways survey information is available from the  
 Engineering Services Department, Los Angeles, California.

Division of Highways right-of-way information is available at  
 Right of Way Department, Los Angeles, California.



STREET	COUNTY	ROUTE	POST MILES - TOTAL PROJECT	SHEET NO.	TOTAL SHEETS	DATE
07 LA 118		R1.8-R31		2	2	12-1-71
STATE OF CALIFORNIA DIVISION OF HIGHWAYS						
MONUMENTATION MAP						
DATUM CALIFORNIA COORDINATE SYSTEM - ZONE 7						
MAP NO. MF-4100-2						
6961	Surveyed by		Checked by		Date	
C E	George Wolfhard		E. L. GREENGARD		12-1-71	
	S. L. ELICKS		F. A. MAAS			

F.M. 21258-2

F.M. 21255-2

WF 4100-5

44210.000

4418.000

4420.000

WF 4100-5

44214.000

44210.000

44210.000

4420.000

MATCH LINE

SEE MF-4100-1

MATCH LINE

SEE MF

WF 4100-5