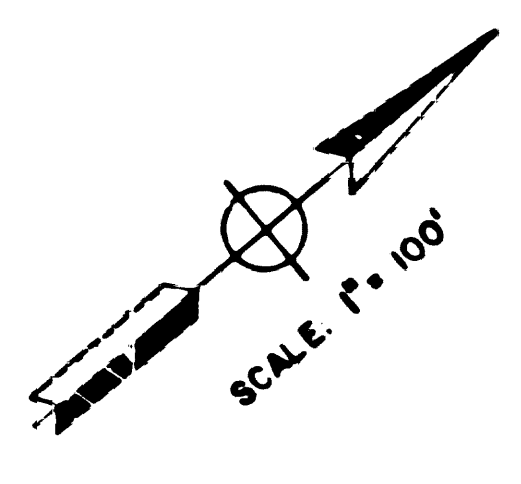
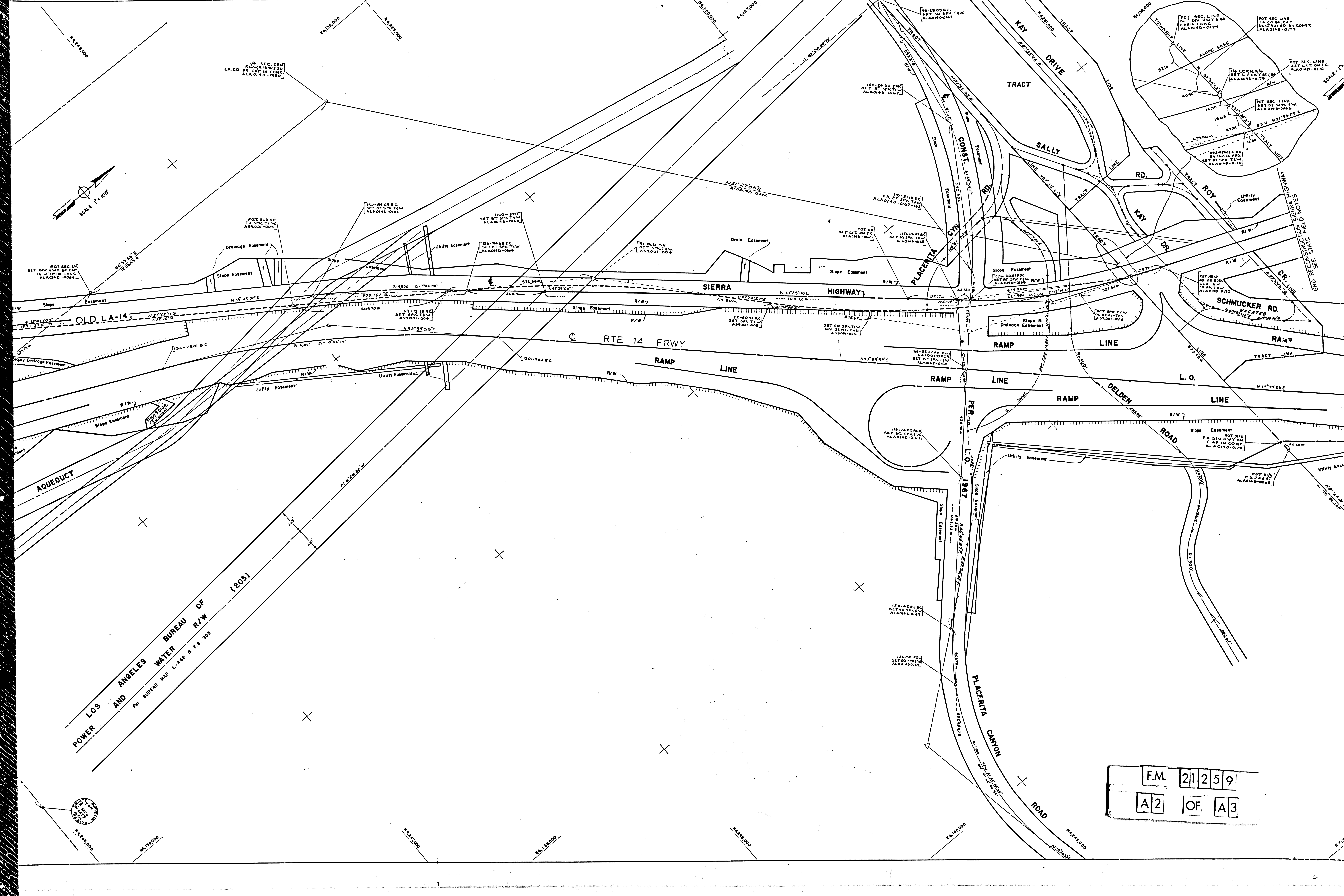


SEE MF 4078-2

F.M.	21	25	9
A1	OF	A3	



SCALE 1" = 100'

LOS ANGELES WATER BUREAU R/W (205)
 BY BUREAU MAP L-468 & F.B. 903

F.M. 21259
 A2 OF A3

FIRST STAGE GRADING CONTRACT
 ON FREEWAY AND REALIGNMENT OF
 SIERRA HIGHWAY

In Los Angeles County near Newhall on Antelope Valley Freeway between 1.0 mile
 south and 1.1 miles north of Placerita Canyon Road Portions and on Sierra
 Highway between 2.1 miles north of Route 5 and 1.9 miles south of
 Soledad Canon Road.

LA-14 P.M. 26.4 - 29.5
 R26.5 - R28.5
 Construction Contract 07-035614
 Completed FEB. 9, 1970

1. Bearings are taken from C.C.M.'S 59.2 and 59.11 and are based on the California Coordinate System Zone VII, Sec. 8809 of the Public Resources Code.
2. Division of Highways Survey information is available from Engineering Services Department located at 550 So. Vermont Ave., Los Angeles, California.
3. Division of Highways Right-of-Way information is available from the Right-of-Way Department located at 120 So. Spring St., Los Angeles, California.

MEASUREMENTS MADE PRIOR TO
 FEB. 9, 1971
 EARTHQUAKE

