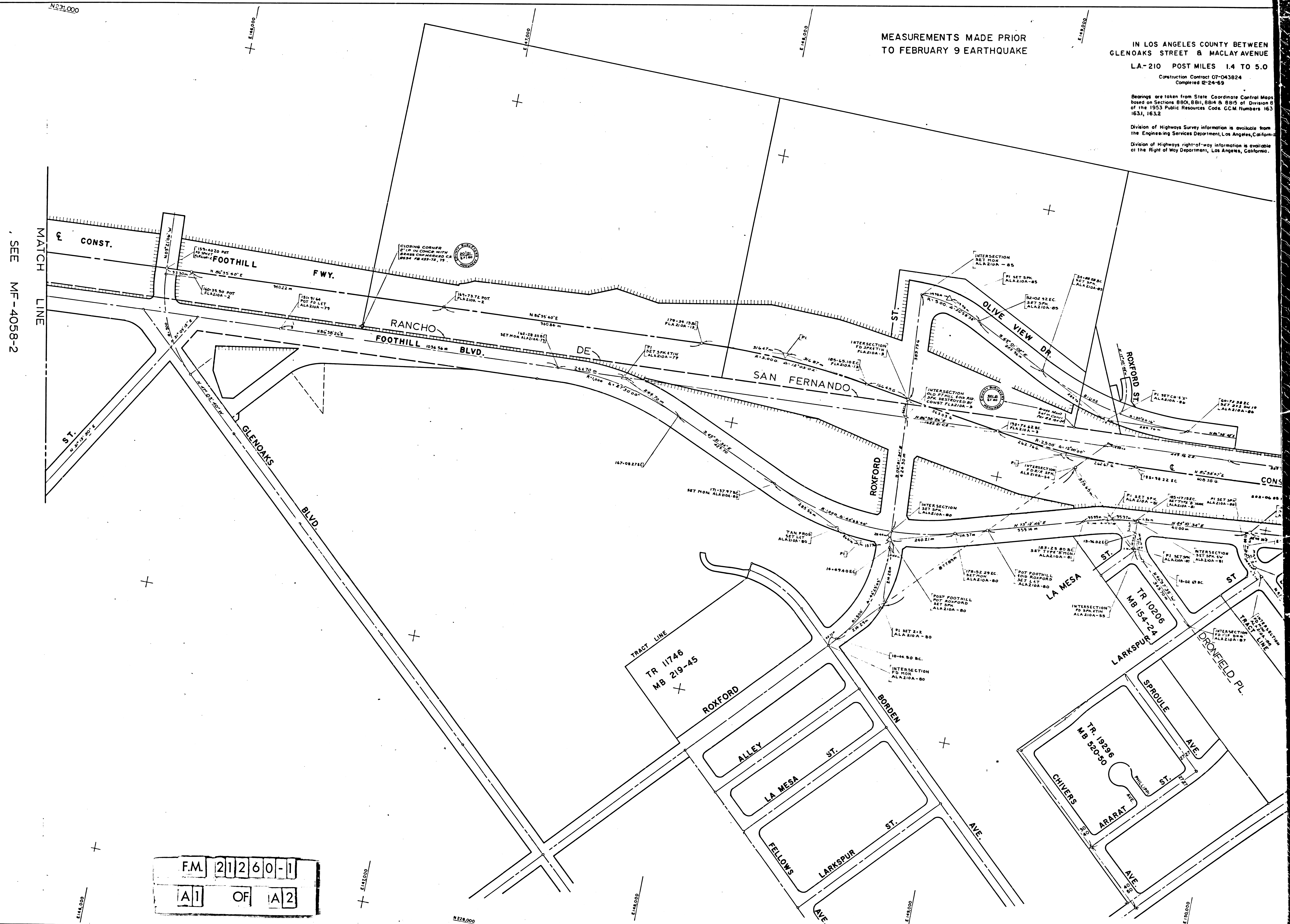


MEASUREMENTS MADE PRIOR  
TO FEBRUARY 9 EARTHQUAKE

IN LOS ANGELES COUNTY BETWEEN  
GLENDAKS STREET & MACLAY AVENUE  
LA-210 POST MILES 1.4 TO 5.0  
Construction Contract 07-043824  
Completed 12-24-69

Bearings are taken from State Coordinate Control Maps based on Sections 8801, 8811, 8814 & 8815 of Division 6 of the 1953 Public Resources Code. CCM Numbers 163 1631, 1632

Division of Highways Survey information is available from the Engineering Services Department, Los Angeles, California  
Division of Highways right-of-way information is available at the Right of Way Department, Los Angeles, California.



SEE MF-4058-2

F.M. 21260-1  
A1 OF A2

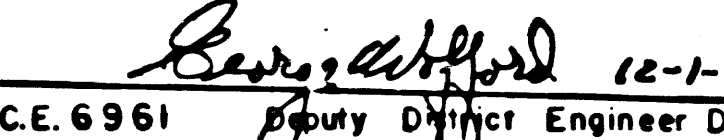


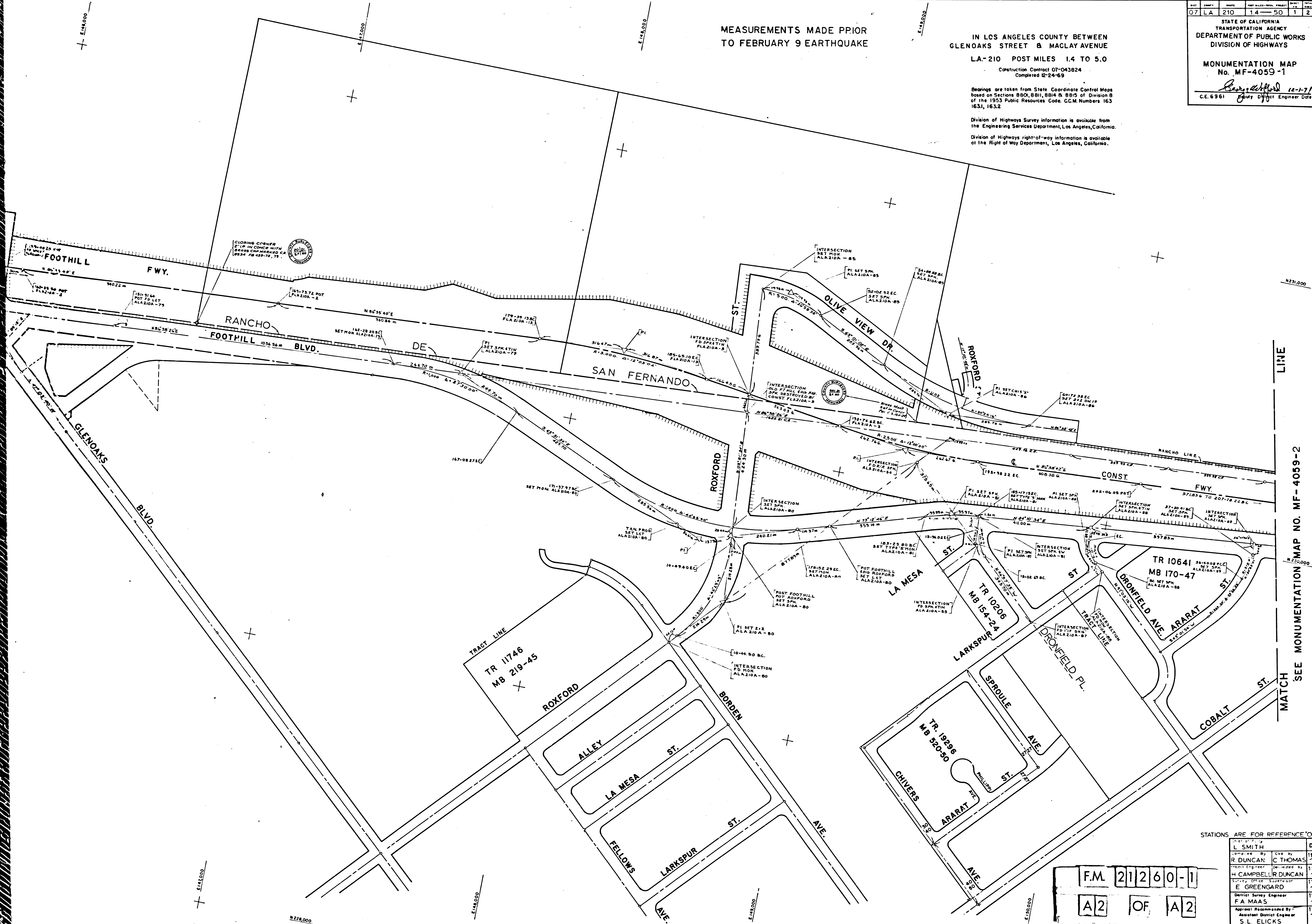
MEASUREMENTS MADE PRIOR  
TO FEBRUARY 9 EARTHQUAKE

IN LOS ANGELES COUNTY BETWEEN  
GLENOKS STREET & MACLAY AVENUE  
L.A.-210 POST MILES 1.4 TO 5.0  
Construction Contract 07-043824  
Completed 12-24-69

Bearings are taken from State Coordinate Control Maps based on Sections 880, 881, 884 & 885 of Division 8 of the 1953 Public Resources Code. C.C.M. Numbers 163 1631, 1632

Division of Highways Survey information is available from the Engineering Services Department, Los Angeles, California.  
Division of Highways right-of-way information is available at the Right of Way Department, Los Angeles, California.

07	LA	210	14	50	1	2
STATE OF CALIFORNIA TRANSPORTATION AGENCY DEPARTMENT OF PUBLIC WORKS DIVISION OF HIGHWAYS						
MONUMENTATION MAP No. MF-4059-1						
 C.E. 6961 Survey District Engineer Date						



LINE  
SEE MONUMENTATION MAP NO. MF-4059-2  
MATCH

STATIONS ARE FOR REFERENCE ONLY

NAME	DATE
L. SMITH	11/71
R. DUNCAN	11/71
C. THOMAS	11/71
H. CAMPBELL	11/71
R. DUNCAN	11/71
E. GREENGARD	11/71
F. A. MAAS	11/71
S. L. ELICKS	11/71

F.M. 21260-1  
A2 OF A2