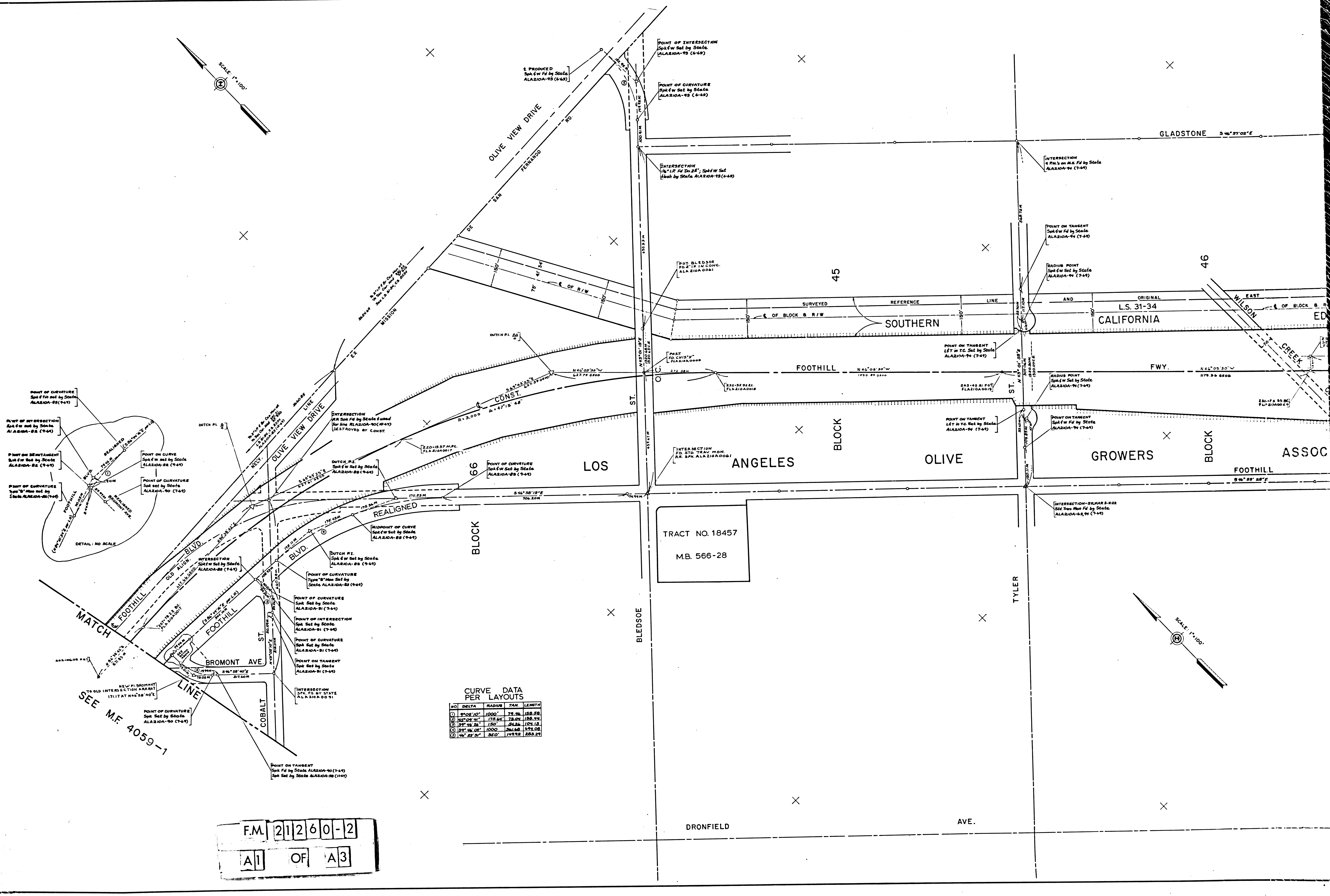


**CURVE DATA PER LAYOUTS**

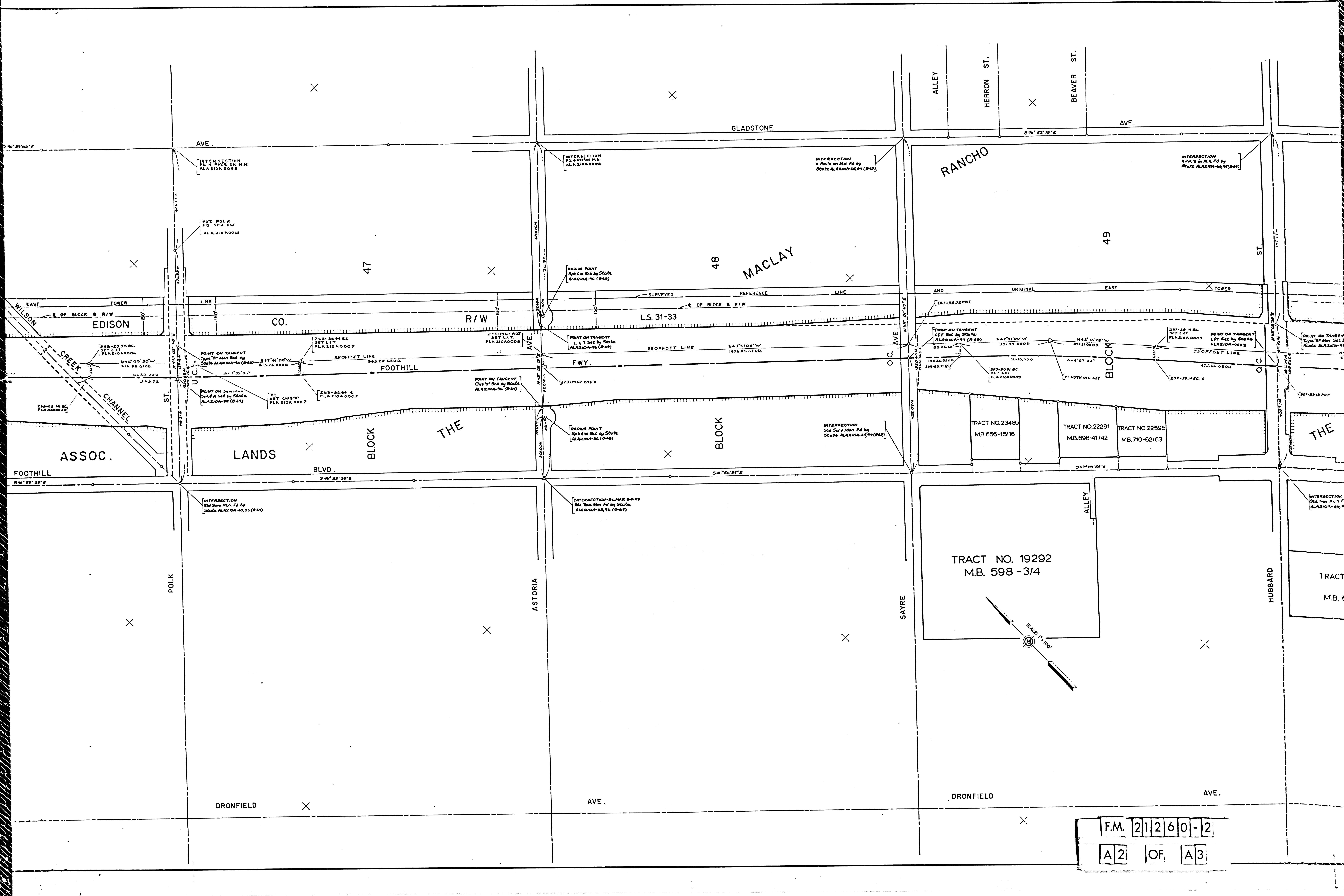
NO.	DELTA	RADIUS	TAN	LENGTH
1	7°02'00"	1000'	79.36	158.58
2	45°00'00"	175.64'	78.09	186.94
3	31°46'28"	150'	89.66	104.18
4	31°46'00"	1000'	361.68	673.08
5	46°52'51"	350'	149.92	283.21

SEE M.F. 4059-1

F.M. 21260-2  
A1 OF A3







F.M. 21260-2  
 A2 OF A3

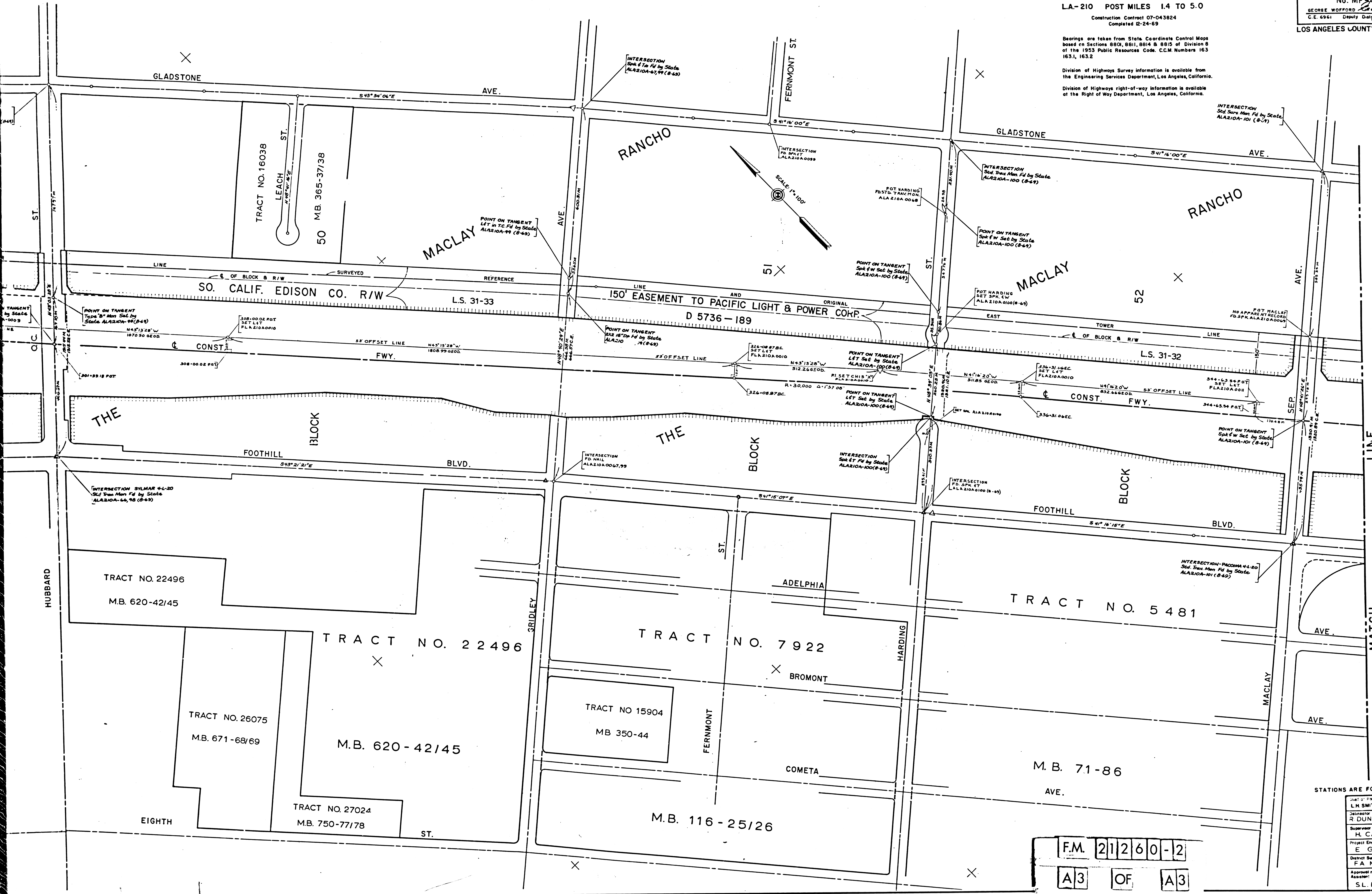


MEASUREMENTS MADE PRIOR  
TO FEBRUARY 9 EARTHQUAKE

IN LOS ANGELES COUNTY BETWEEN  
GLENOKS STREET & MACLAY AVENUE  
LA.-210 POST MILES 1.4 TO 5.0  
Construction Contract 07-043824  
Completed 12-24-69

STATE OF CALIFORNIA  
TRANSPORTATION AGENCY  
DEPARTMENT OF PUBLIC WORKS  
DIVISION OF HIGHWAYS  
MONUMENTATION MAP  
No. MF 4059-2  
GEORGE WOFFORD  
C.E. 6561 Deputy District Engineer  
Date 12-1-71  
LOS ANGELES COUNTY FILE NO.

Bearings are taken from State Coordinate Control Maps based on Sections 8801, 8811, 8814 & 8815 of Division 8 of the 1953 Public Resources Code, C.C.M. Numbers 163 163.1, 163.2  
Division of Highways Survey Information is available from the Engineering Services Department, Los Angeles, California.  
Division of Highways right-of-way information is available at the Right of Way Department, Los Angeles, California.



SEE M.F. 4060 - 1

STATIONS ARE FOR REFERENCE ONLY

NAME	DATE
Checked by L.H. SMITH	11/71
Designer R. DUNCAN	11/71
Complied by R. DUNCAN	11/71
Supervisor H. CAMPBELL	11/71
Project Engineer E. GREENGARD	11/71
District Survey Engineer F.A. MAAS	11/71
Approval recommended by S.L. ELICKS	11/71
Assisted by S.L. ELICKS	11/71

F.M. 21260-2  
A3 OF A3