

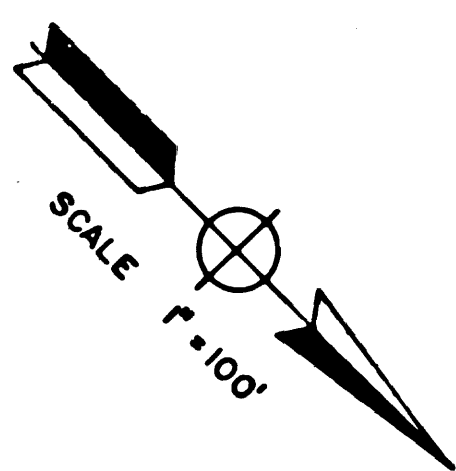
IN LOS ANGELES COUNTY BETWEEN 6.9 MI.  
N. OF PARKER RD. & 12.3 MI. N. OF PARKER RD.

Bearings are taken from State Coordinate Control  
Maps based on sections 8801, 8809, 8911, 8914, 8915  
of division 8 of the 1953 Public Resources Code.  
CCM number: 28.11

Division of Highways survey information is available  
from the Engineering Services Dept., Los Angeles, Cal.

Division of Highways right-of-way information is  
available from the Right of Way Department,  
Los Angeles, California.

References:  
State notes: G28.001-1113 A28-5-2-3 A28.001-61-42-43 ALA005H-250  
FLA005H-107-108  
R/W map: F 1315



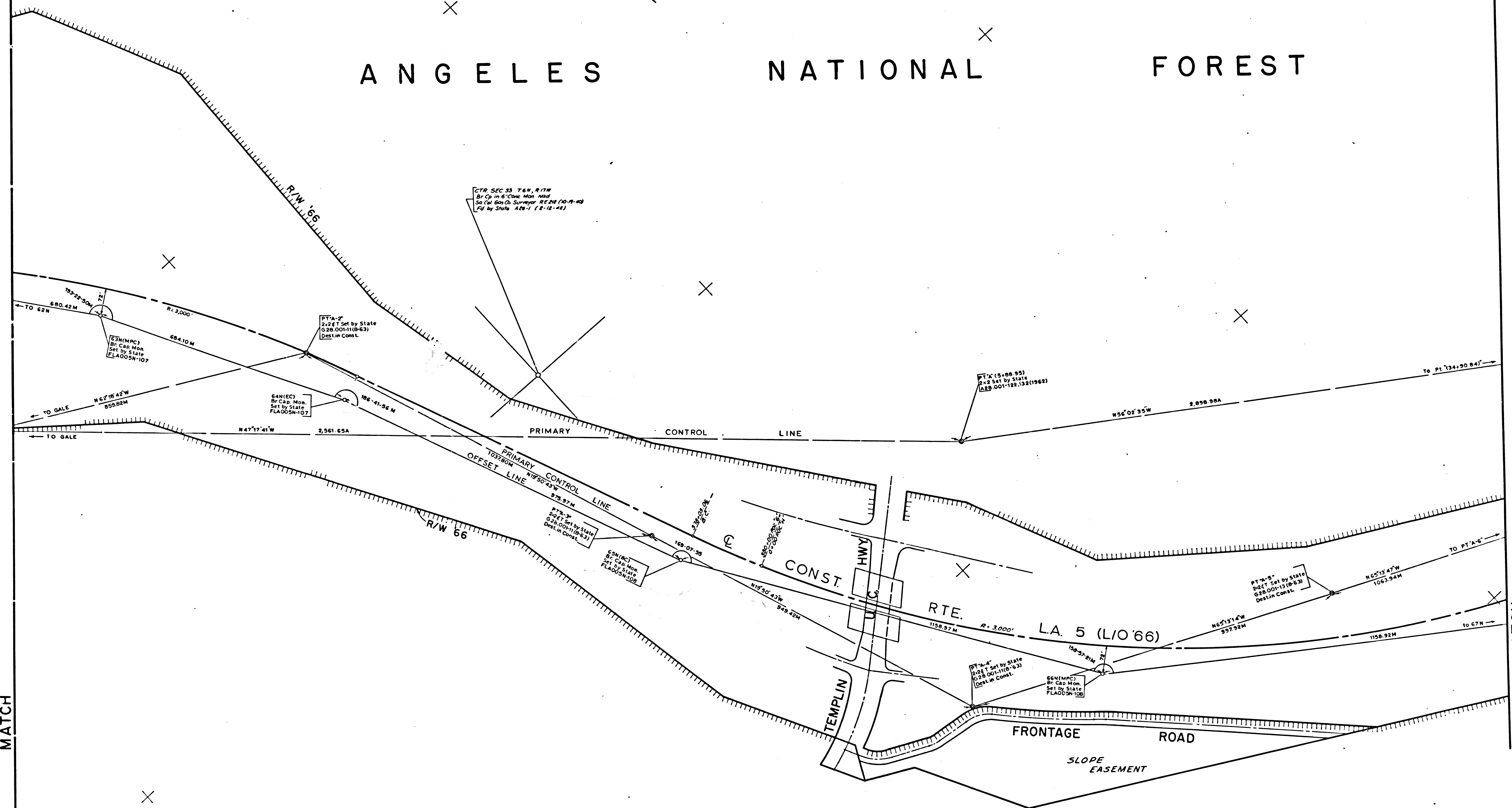
# ANGELES NATIONAL FOREST

MATCH LINE

MATCH LINE

SEE MF 4037-10

SEE MF 4025-2



L.A. COUNTY FILE No.

DISTRICT	COUNTY	ROUTE	POST MILES - TOTAL PROJECT	DATE	NO. OF PAGES
07	L.A.	5	65.7 - 71.1	1	8

STATE OF CALIFORNIA DIVISION OF HIGHWAYS  
SURVEYS  
MONUMENTATION MAP  
DATUM CALIFORNIA COORDINATE SYSTEM - ZONE 7  
MAP NO. MF 4025-1

C.E. *Bernie Alfried* 12-19-71  
Survey Engineer

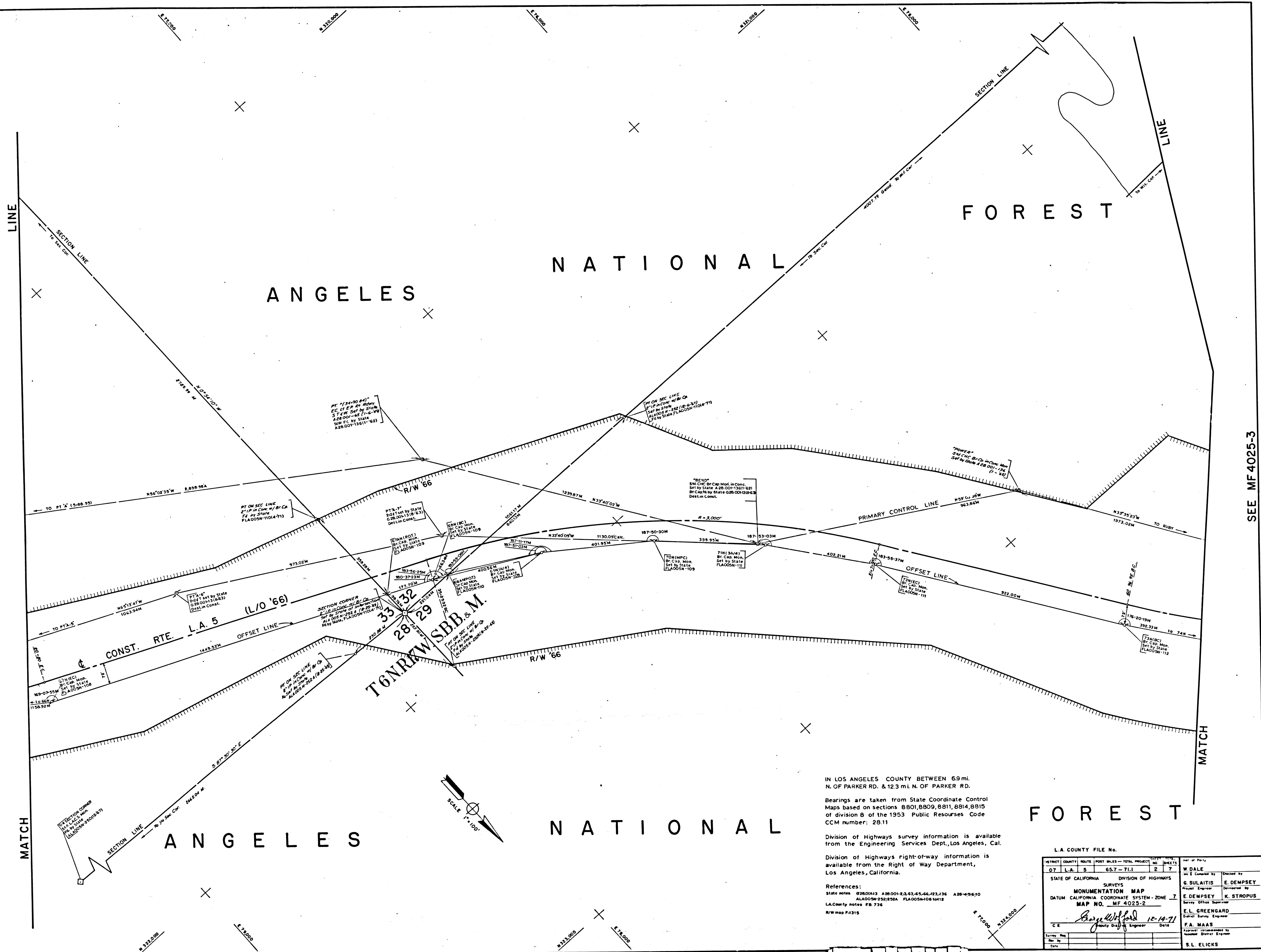
Checked by	W. DALE
Checked by	G. SULAITIS
Checked by	E. DEMPSEY
Checked by	E. DEMPSEY
Checked by	K. STROPUS
Checked by	E.L. GREENGARD
Checked by	F.A. MAAS
Checked by	S.L. ELICKS

F.M. 21261-1

LINE  
SECTION LINE  
TO SEC. COR.  
MATCH

SEE MF 4025-1

SEE MF 4025-3



ANGELES

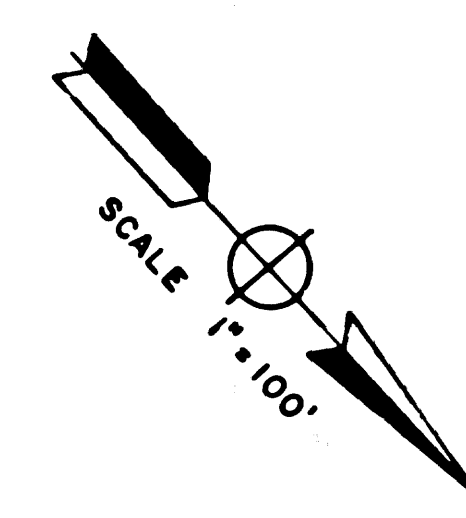
NATIONAL

FOREST

ANGELES

NATIONAL

FOREST



IN LOS ANGELES COUNTY BETWEEN 6.9 MI.  
N. OF PARKER RD. & 12.3 MI. N. OF PARKER RD.

Bearings are taken from State Coordinate Control  
Maps based on sections 8801, 8809, 8811, 8814, 8815  
of division 8 of the 1953 Public Resources Code  
CCM number: 28.11

Division of Highways survey information is available  
from the Engineering Services Dept., Los Angeles, Cal.

Division of Highways right-of-way information is  
available from the Right of Way Department,  
Los Angeles, California.

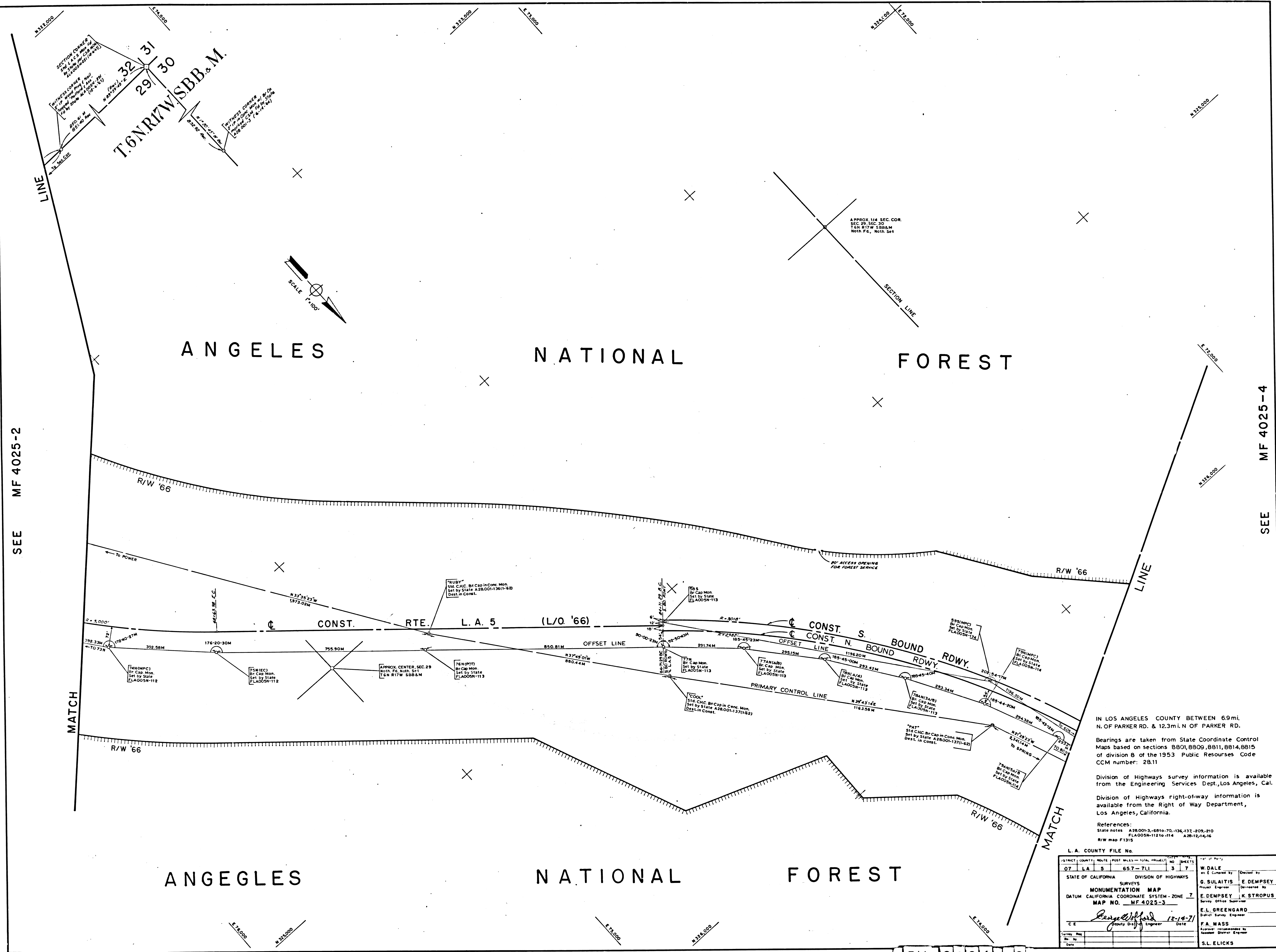
References:  
State notes: 0280043 A280043 A280043-63, 63, 65, 66, 723, 736 A28-495-10  
ALA005M-252-252A FLA005M-108 10112  
LA County notes: FB 736  
R/W map #4315

FOREST

DISTRICT COUNTY ROUTE (POST MILES - TOTAL PROJECT) OFFICE PROJECT NO.		Sheet of Plans	
07	L.A. 5	65.7 - 71.1	2 7
STATE OF CALIFORNIA DIVISION OF HIGHWAYS SURVEYS		W. DALE	
MONUMENTATION MAP		G. SULAITIS E. DEMPSEY	
DATUM CALIFORNIA COORDINATE SYSTEM - ZONE 7		Project Engineer	
MAP NO. MF 4025-2		Survey Office Engineer	
Surveyed by: <i>Ray W. H. Ford</i>		E.L. GREENGARD	
Checked by: <i>Ray W. H. Ford</i>		District Survey Engineer	
Date: 12-14-71		F.A. MAAS	
Approved by: <i>Ray W. H. Ford</i>		Assistant District Engineer	
S.L. ELICKS		District Engineer	

F.M. 21261-2

F.M. 21261-2



SEE MF 4025-2

SEE MF 4025-4

IN LOS ANGELES COUNTY BETWEEN 6.9 MI. N. OF PARKER RD. & 12.3 MI. N. OF PARKER RD.  
 Bearings are taken from State Coordinate Control Maps based on sections 8901, 8909, 8911, 8914, 8915 of division 8 of the 1953 Public Resources Code CCM number: 2811  
 Division of Highways survey information is available from the Engineering Services Dept., Los Angeles, Cal.  
 Division of Highways right-of-way information is available from the Right of Way Department, Los Angeles, California.  
 References:  
 State notes: A28001-3, 6810-70, 136, 137, 209, 210  
 FLA005N-112 to -114 A28-12, 14, 16  
 R/W map F1315

L. A. COUNTY FILE NO.

DISTRICT	COUNTY	ROUTE	POST MILES - TOTAL PROJECT	SHEETS	NO.	DATE
07	LA	5	65.7-71.1	3	7	12-18-71

W. DALE  
 in Charge by

G. SULAITIS  
 Project Engineer

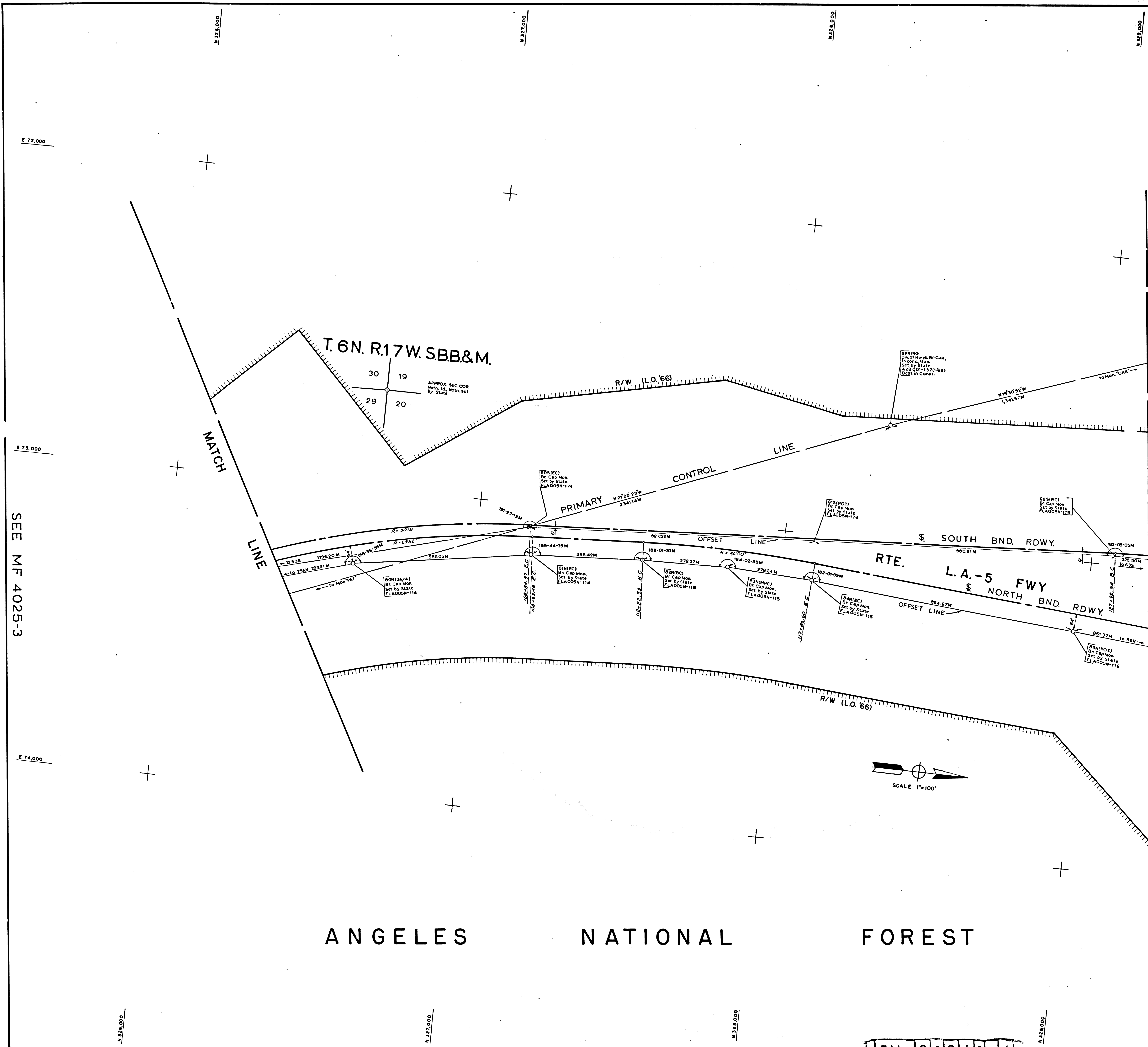
E. DEMPSEY  
 Survey Office Supervisor

E. L. GREENGARD  
 District Survey Engineer

F. A. MASS  
 Assistant District Engineer

S. L. ELICKS

F.M. 21261-3



SEE MF 4025-3

SEE MF 4025-5

ANGELES NATIONAL FOREST

IN LOS ANGELES COUNTY BETWEEN 6.9 MI. N. OF PARKER RD. & 12.3 MI. N. OF PARKER RD.

Bearings are taken from State Coordinate Control Maps based on sections 8801, 8809, 8811, 8814, 8815 of division 8 of the 1953 Public Resources Code CCM number: 28.22

Division of Highways survey information is available from the Engineering Services Dept., Los Angeles, Cal.

Division of Highways right-of-way information is available from the Right of Way Department, Los Angeles, California.

References:  
 State notes A-28-18; FLA005N-114 to 116  
 R/W maps F 1315, F 1316

LA COUNTY FILE NO.

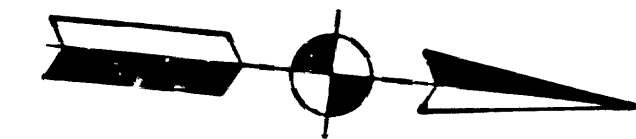
DISTRICT	COUNTY	ROUTE	POST MILES - TOTAL PROJECT	SHEET NO.	TOTAL SHEETS	DATE OF PARTY
07	LA	5	65.7-71.1	4	8	W. DALE
STATE OF CALIFORNIA DIVISION OF HIGHWAYS SURVEYS						
MONUMENTATION MAP			G. SULAITIS			
DATUM: CALIFORNIA COORDINATE SYSTEM - ZONE 7			E. DEMPSEY			
MAP NO. MF 4025-4			E. L. GRENGARD			
CE <i>George Wilford</i> 12-16-71			F.A. MAAS			
Surveyed By			Approved & Recommended by			
Date			S.L. ELICKS			

F.M. 21261-4

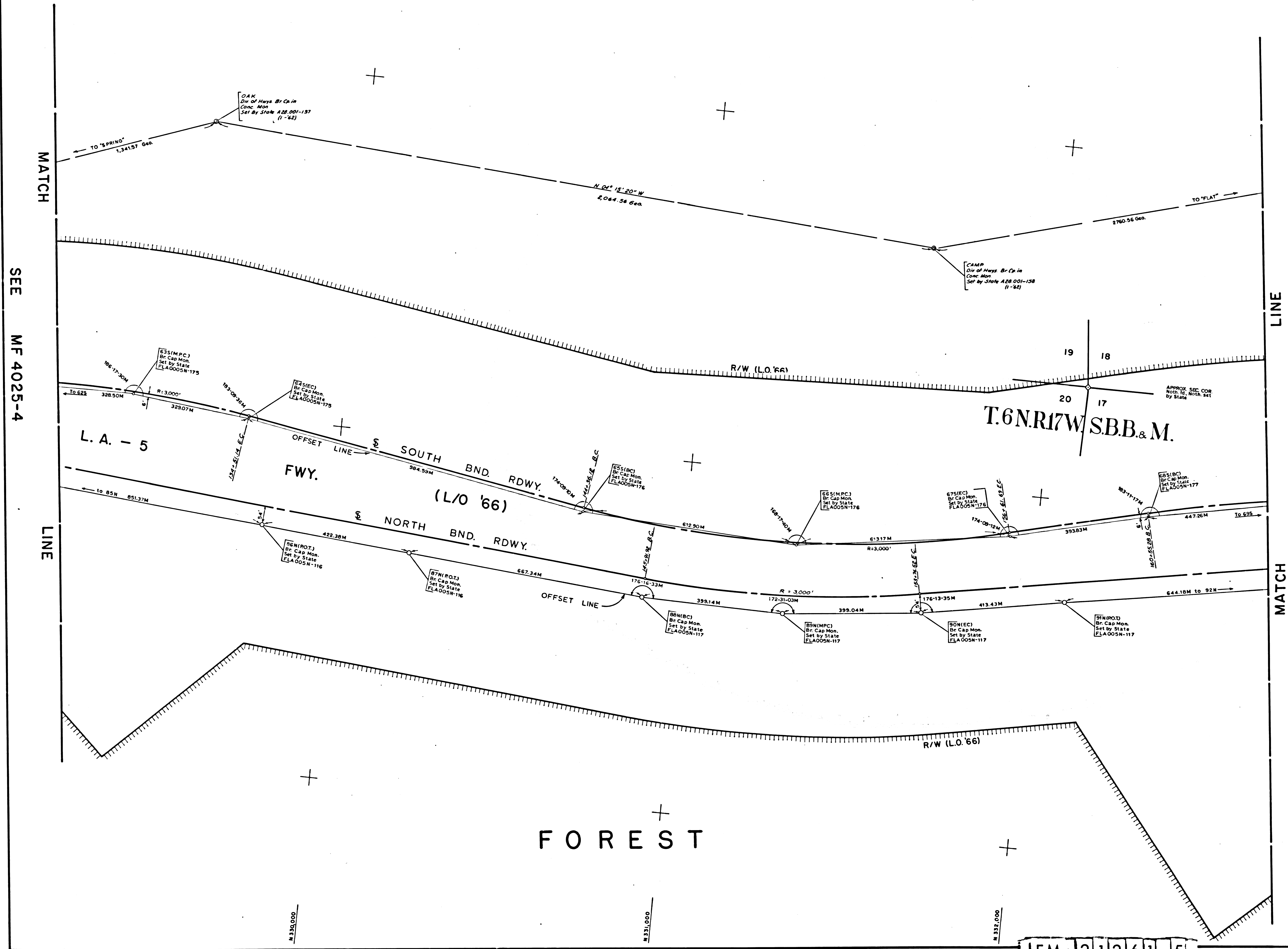
FM 226-4

ANGELES

NATIONAL



SCALE 1"=100'



SEE MF 4025-4

SEE MF 4025-6

IN LOS ANGELES COUNTY BETWEEN 6.9 MI. N. OF PARKER RD. & 12.3 MI. N. OF PARKER RD.

Bearings are taken from State Coordinate Control Maps based on sections 8801, 8809, 8811, 8814, 8815 of division 8 of the 1953 Public Resources Code CCM number: 28.22

Division of Highways survey information is available from the Engineering Services Dept., Los Angeles, Cal.

Division of Highways right of way information is available from the Right of Way Department, Los Angeles, California.

References:  
State notes A 28001-137, 127; FLA005N-116, 117  
R/W map F 1316

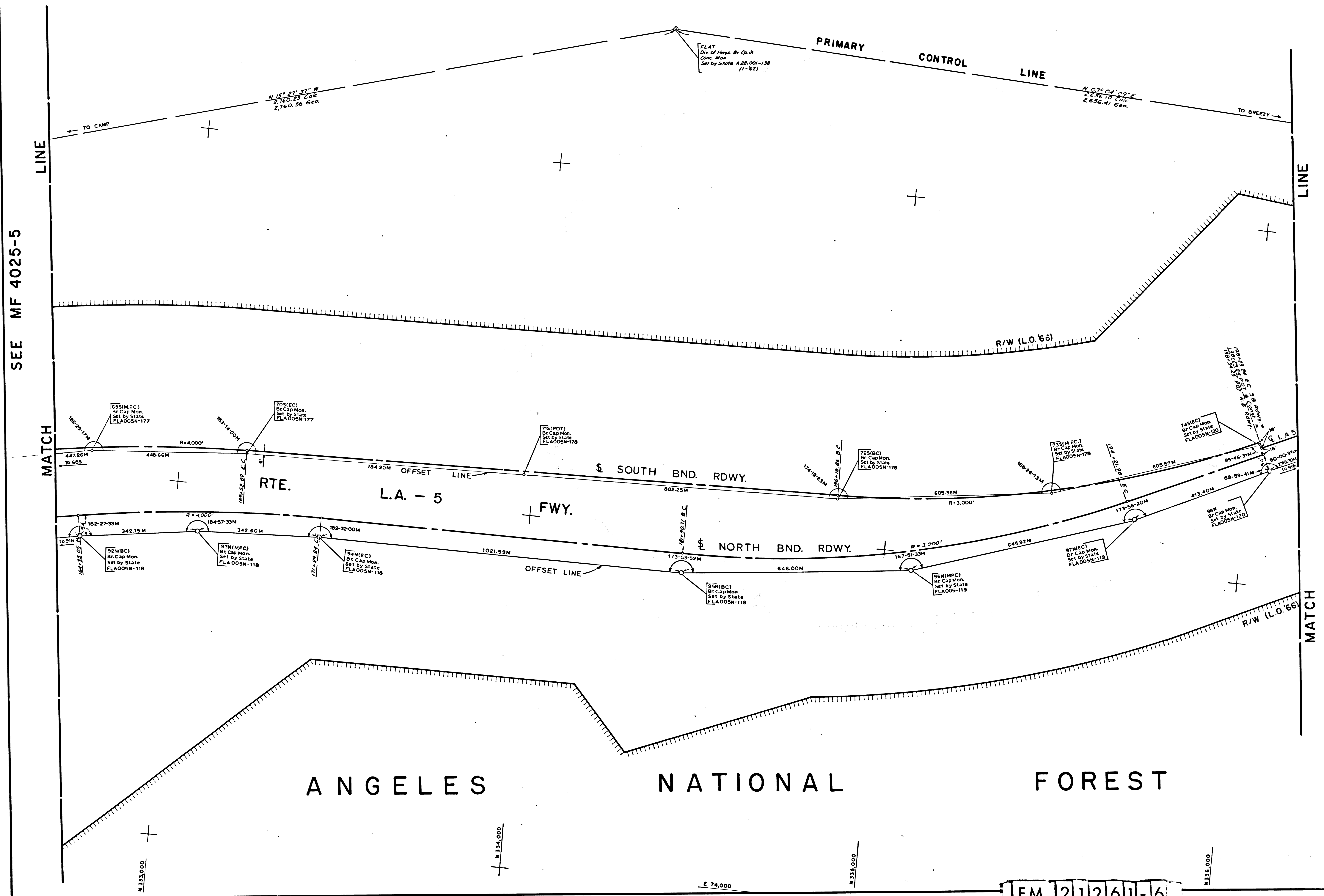
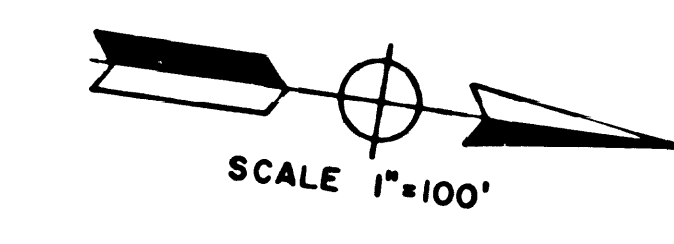
L.A. COUNTY FILE No.

DISTRICT	COUNTY	ROUTE	POST MILES - TOTAL PROJECT	SHEET NO.	TOTAL SHEETS
07	LA	5	65.7 - 71.1	15	8
STATE OF CALIFORNIA DIVISION OF HIGHWAYS SURVEYS MONUMENTATION MAP DATUM: CALIFORNIA COORDINATE SYSTEM - ZONE 7 MAP NO. MF 4025-5 DATE: 12-14-71 ENGINEER: George Wofford DISTRICT SUPERVISOR: E.L. GREENGARD DISTRICT ENGINEER: F.A. MAAS APPROVED: S.L. ELICKS					

FM 21261-5

FM 21261-5

ANGELES NATIONAL FOREST



IN LOS ANGELES COUNTY BETWEEN 6.9 MI.  
N. OF PARKER RD. & 12.3 MI. N. OF PARKER RD.

Bearings are taken from State Coordinate Control  
Maps based on sections 8801,880 ,8911,8814,8815  
of division B of the 1953 Public Resources Code  
CCM number: 28.22

Division of Highways survey information is available  
from the Engineering Services Dept., Los Angeles, Cal.

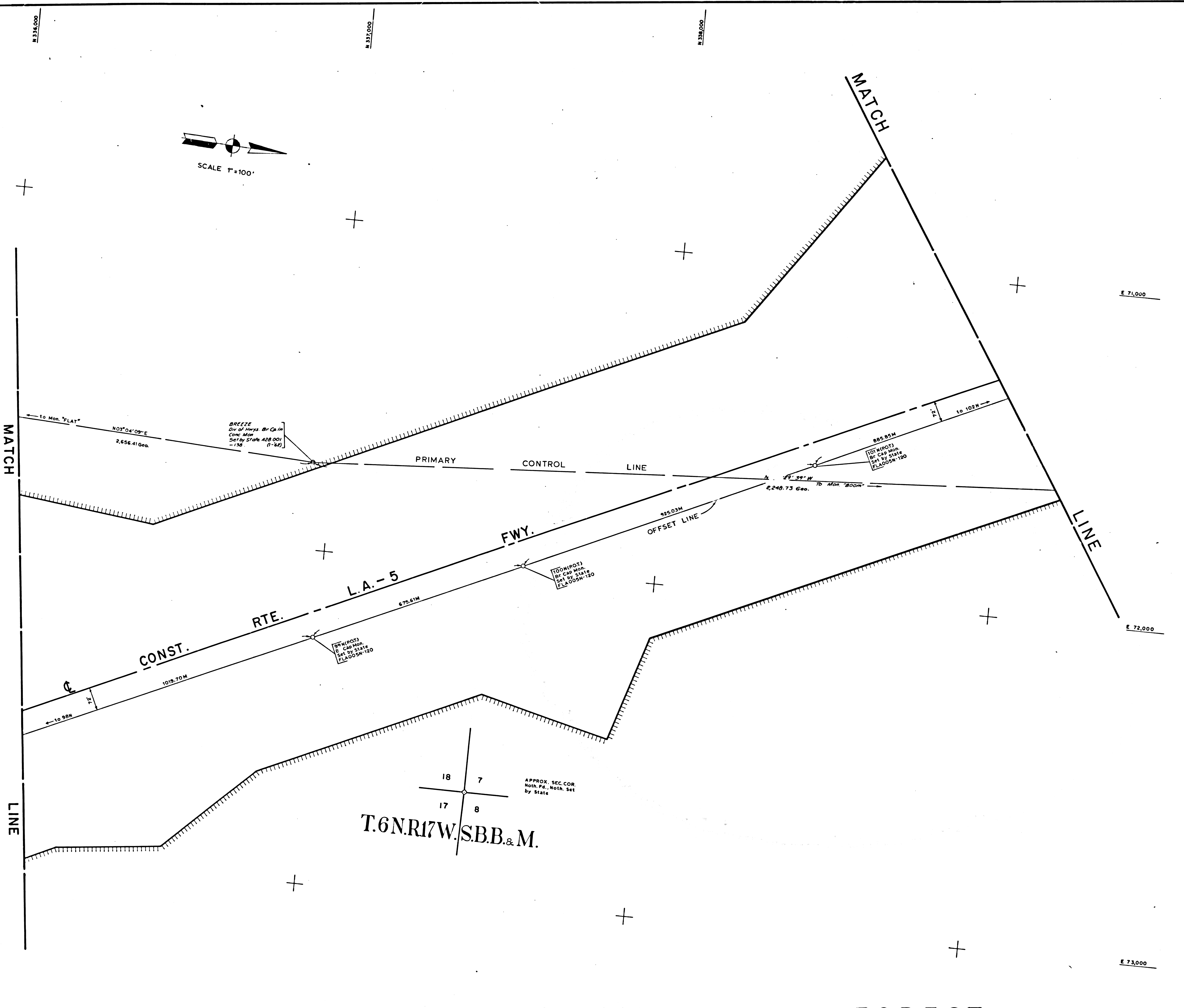
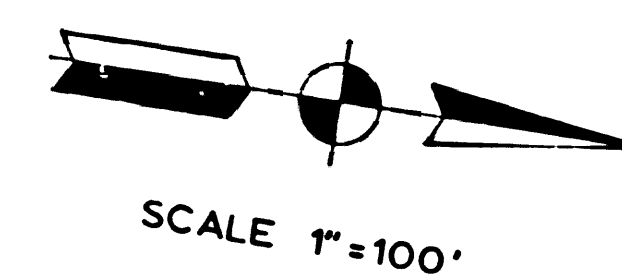
Division of Highways right-of-way information is  
available from the Right of Way Department,  
Los Angeles, California.

References:  
State notes A28001-138, FLA005N-118 to 120  
R/W map F 1316

L.A. COUNTY FILE No.

STRICT COUNTY ROUTE POST MILES - TOTAL PROJECT	07	LA 5	65.7 - 71.1	6	8
DATE	12-14-71				
STATE OF CALIFORNIA	DIVISION OF HIGHWAYS				
SURVEYS			MONUMENTATION MAP		
DATUM CALIFORNIA COORDINATE SYSTEM - ZONE 7			MAP NO. MF 4025-6		
C E			Date		
S. L. ELICKS			E. S. DEMPSEY		

FM 21261-6



SEE MF 4025-6

SEE MF 4025-8

ANGELES NATIONAL FOREST

IN LOS ANGELES COUNTY BETWEEN 6.9mi. N. OF PARKER RD. & 12.3mi. N. OF PARKER RD.  
 Bearings are taken from State Coordinate Control Maps based on sections 8801, 8809, 8911, 8914, 8915 of division 8 of the 1953 Public Resources Code CCM number: 2822  
 Division of Highways survey information is available from the Engineering Services Dept., Los Angeles, Cal.  
 Division of Highways right-of-way information is available from the Right of Way Department, Los Angeles, California.  
 References:  
 State notes A 28001-138, FLA005N-120 R/W map F 1316

L.A. COUNTY FILE No.

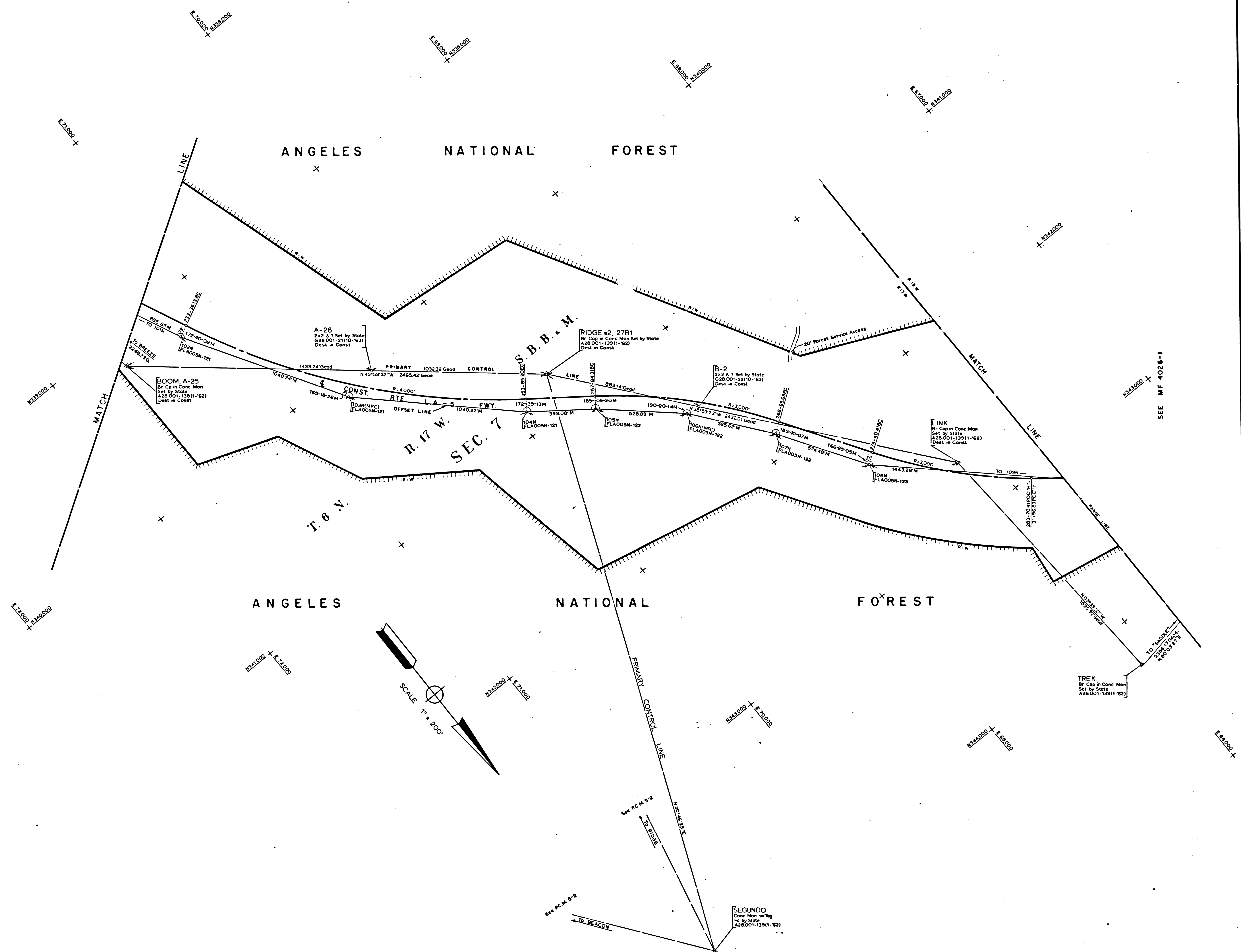
DISTRICT	COUNTY	ROUTE	POST MILES - TOTAL PROJECT	SHEET NO.	TOTAL SHEETS	Date of Plot
07	LA	5	65.7 - 71.1	7	8	W. DALE
STATE OF CALIFORNIA SURVEYS DIVISION OF HIGHWAYS						W. DALE
MONUMENTATION MAP						W. DALE
DATUM: CALIFORNIA COORDINATE SYSTEM - ZONE 7						W. DALE
MAP NO. MF 4025-7						W. DALE
C.E.	Surveyed by					W. DALE
Map No.	Date					W. DALE
Date						W. DALE
G. SULAITIS						W. DALE
E. DEMPSEY						W. DALE
E. DEMPSEY						W. DALE
K. STROPUS						W. DALE
E.L. GREENGARD						W. DALE
F.A. MAAS						W. DALE
S.L. SLICKS						W. DALE

F.M. 21261-7

F.M. 21261-7

SEE MF 4025-7

SEE MF 4026-1



IN LOS ANGELES COUNTY BETWEEN 6.9 MI.  
N. OF PARKER RD. & 12.3 MI. N. OF PARKER RD.

Bearings are taken from State Coordinate Control  
Maps based on sections 8801, 8809, 8811, 8814, 8815  
of division B of the 1953 Public Resources Code  
CCM number: 28.33

Division of Highways survey information is available  
from the Engineering Services Dept., Los Angeles, Cal.

Division of Highways right-of-way information is  
available from the Right of Way Department,  
Los Angeles, California.

References:  
State notes A28 001-138,139; G28 001-21,22;  
FLA005N-121 to 123  
R/W map F 1316

L.A. COUNTY FILE NO.

DISTRICT	COUNTY	ROUTE	POST MILES - TOTAL PROJECT	CITY	TOTAL SHEETS	Sheet No.
07	LA	5	R657 - R711		8	8
STATE OF CALIFORNIA SURVEYS DIVISION OF HIGHWAYS						
MONUMENTATION MAP			MAP NO. MF-4025-8			
DATUM: CALIFORNIA COORDINATE SYSTEM - ZONE 7						
DATE: 12-14-71						
DRAWN BY: F. A. MAAS						
CHECKED BY: S. L. ELICKS						
APPROVED BY: S. L. ELICKS						

F.M. 21261-8