

CITY OF LOS ANGELES

TRACT 10422

M.B. 157 38-44

FOR ADDITIONAL R/W INFORMATION SEE R/W MAPS F 1303-4,5 & 6.

SEC. 24 T3N,R16W S.B.M.

RANCHO EX-MISSION DE SAN FERNANDO

P-1-605 & 606

VALUES IN PARENTHESIS WERE ESTABLISHED PRIOR TO THE 1971 EARTHQUAKE. ALL OTHER VALUES ARE BASED ON LOS ANGELES GEODETIC CONTROL.

NO	NAME	DESCRIPTION	REFERENCE	REMARKS
1	"S-L-1"	FD BR CAP MON	OLA 005L-006,009	N 231532.86 E 135169.61
2	"S-L-2"	FD 2X2 & T	ALA 005K-0046	N 231909.72 E 135248.03
3	1630 BR EC	SET L&T	SR 74 119-0004	N 231040.82 E 135025.19
4	"F-16"	FD SPK IN SHLD	ALA 005K-0046	N 231005.73 E 135197.80
5	"F-17"	SET SPK	LACE FB228-133pg112	N 231009.54 E 135180.21
6	PI	SET SDOM	"	N 230520.53 E 135572.22
7		SET PBM DISK	LACE FB231-133pg112	
8		FD 2" IP	"	N 231778.32 E 135267.27
9	1634 BR EC	SET L&T	SR 74 119-0005	N 231335.99 E 135263.12
10	"LA 451"	SET 2" IP W/ CDH BR CAP	SR 74 106-0003	N 231687.01 E 135264.99
11		SET SQ SPK T&W	SR 74 070-0011	
12		SET 1" IP W/ CDH PLASTIC PLUG	"	-0010.001
13		SET 2" IP W/ CDH BR TAG	"	-0010
14		SET 1" IP W/ CDH PLASTIC PLUG	"	-0008.0005
15		FD SPK T&W	SR 77 016-0015	N 230908.43 E 135133.33
16			"	-0005.16
17		SET SQ SPK	"	-0016
18			"	-0017
19		FD SPK - RESET SPK	LACE FB228-133pg104	
20	1638 BR EC	SET L&T	SR 74 119-0005	N 231756.64 E 135866.07

LEGEND

- △ SURVEY CONTROL POINTS
- POINTS OF SURVEY
- ◇ ANGLE POINTS
- ◇ SECTION CORNERS, RANCHO CORNERS
- RECORDED VALUE AS ESTABLISHED PREVIOUSLY
- () VALUE ESTABLISHED BY DISTRICT 7 RIGHT OF WAY BRANCH

NOTE

- BEARINGS ARE BASED ON THE CALIFORNIA COORDINATE SYSTEM, DIVISION 8, SECTION 8809 OF THE 1953 PUBLIC RESOURCES CODE.
- DEPARTMENT OF TRANSPORTATION SURVEY INFORMATION IS AVAILABLE FROM THE SURVEY SECTION OF THE ENGINEERING SERVICES BRANCH, LOS ANGELES, CALIFORNIA.
- DEPARTMENT OF TRANSPORTATION RIGHT OF WAY INFORMATION IS AVAILABLE FROM THE RIGHT OF WAY BRANCH, LOS ANGELES, CALIFORNIA.
- STATIONING SHOWN ON THIS MAP IS FOR REFERENCE ONLY.

IN LOS ANGELES COUNTY
BLK. 2313 MOD. 15

GRID WAS ESTABLISHED FROM
EAST: N 4,237,725.75 "WPP" N 4,237,118.21
E 4,130,426.31 E 4,139,092.86
GRID FACTOR: .989908480 REF: PCM 5/14

CONSTRUCTION CONTRACT NO. 07-287644 COMPLETION DATE: 02/11/75

ORIGINAL SCALE: 1" = 100'
100 8 4 2 0 100 200 300 400 500 FEET

LOS ANGELES COUNTY FILE NO.

STATE OF CALIFORNIA - DEPARTMENT OF TRANSPORTATION - SURVEYS

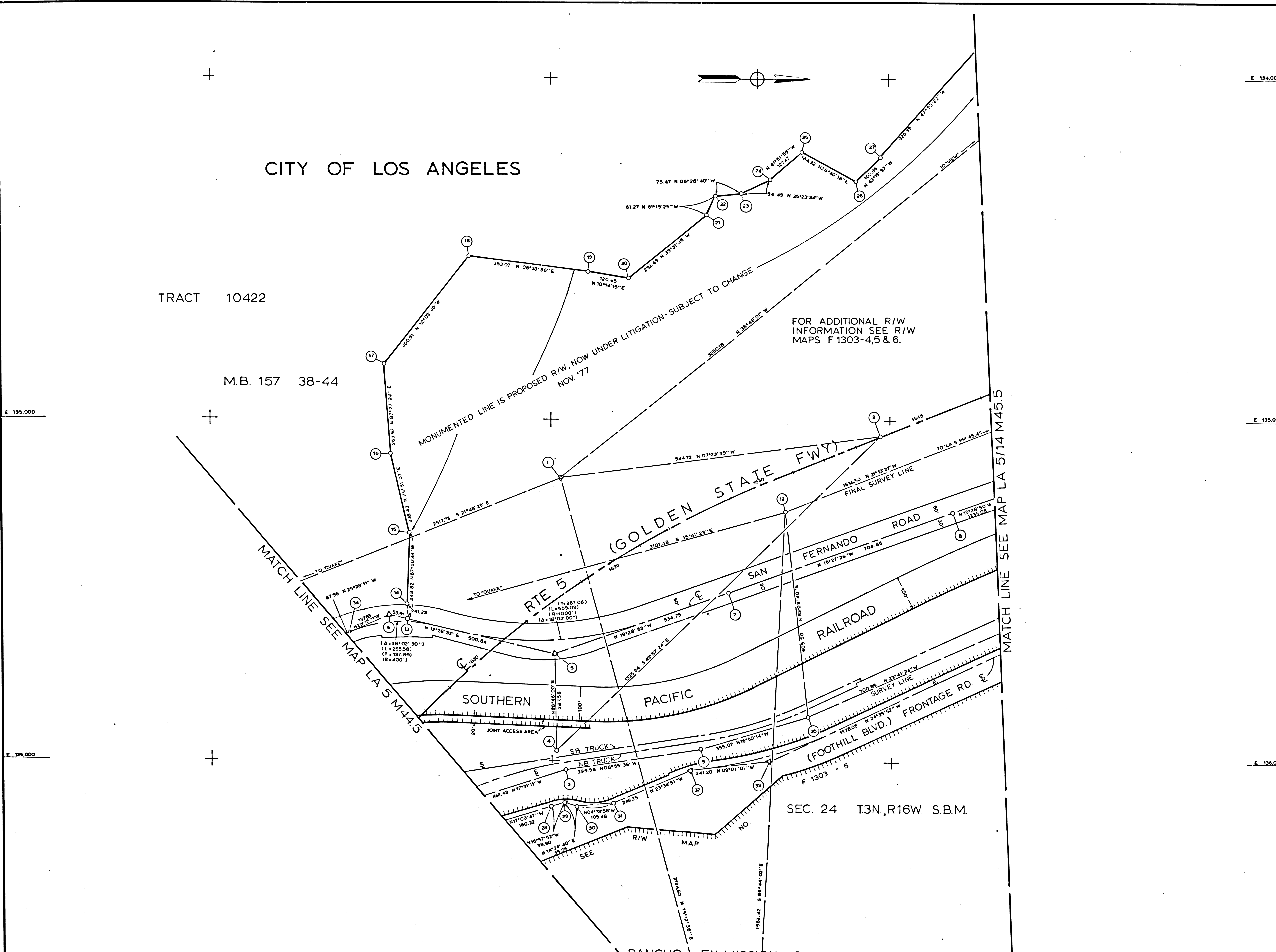
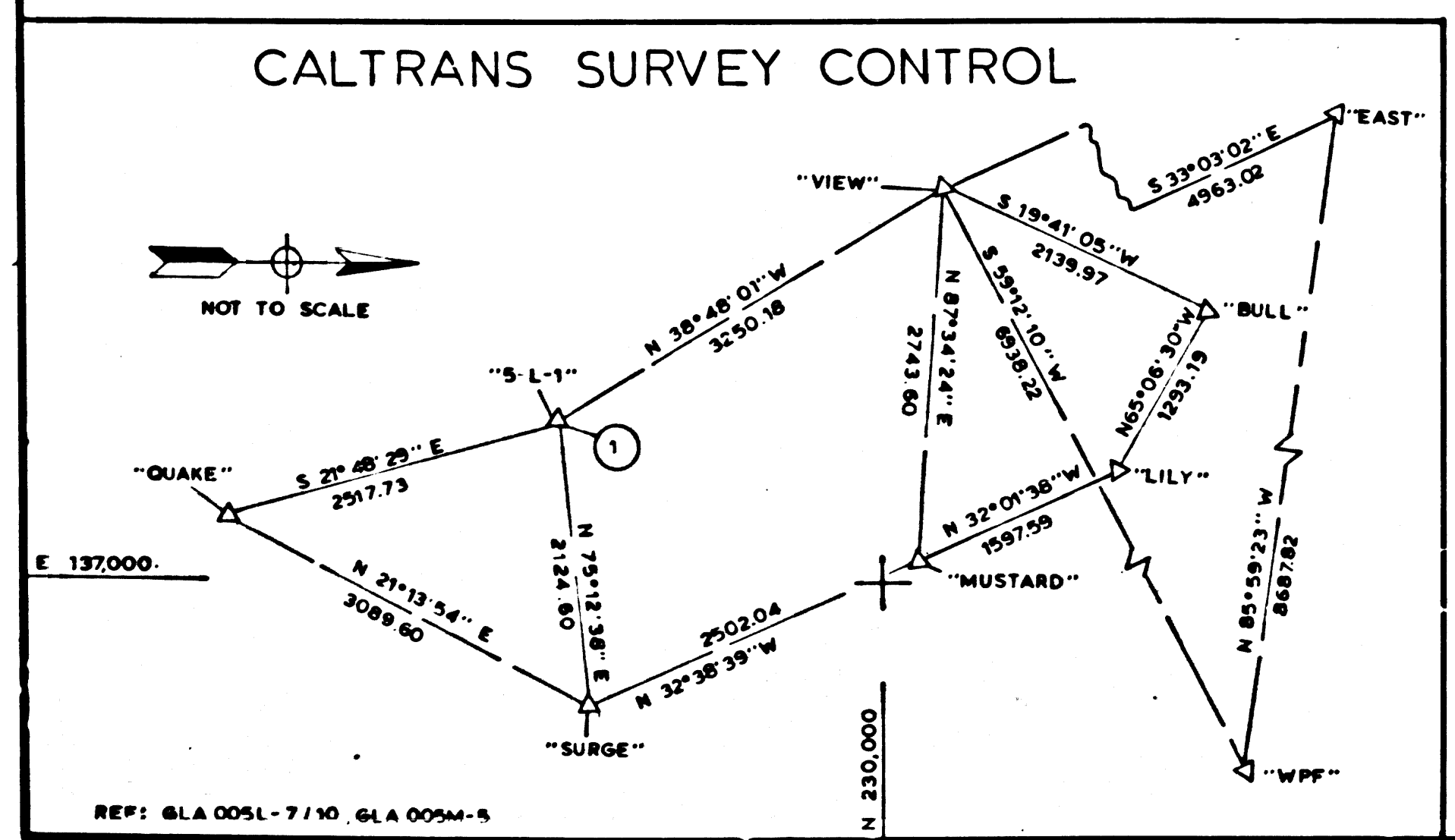
DISTRICT	COUNTY	ROUTE	POST MILES - TOTAL PROJECT	SHEET NO.	TOTAL SHEETS	DATE OF FIELD WORK	OFFICE SUPERVISOR
07	LA	5	45.0-46.7	1	3	R TAYLOR	J ZEHFUSSE

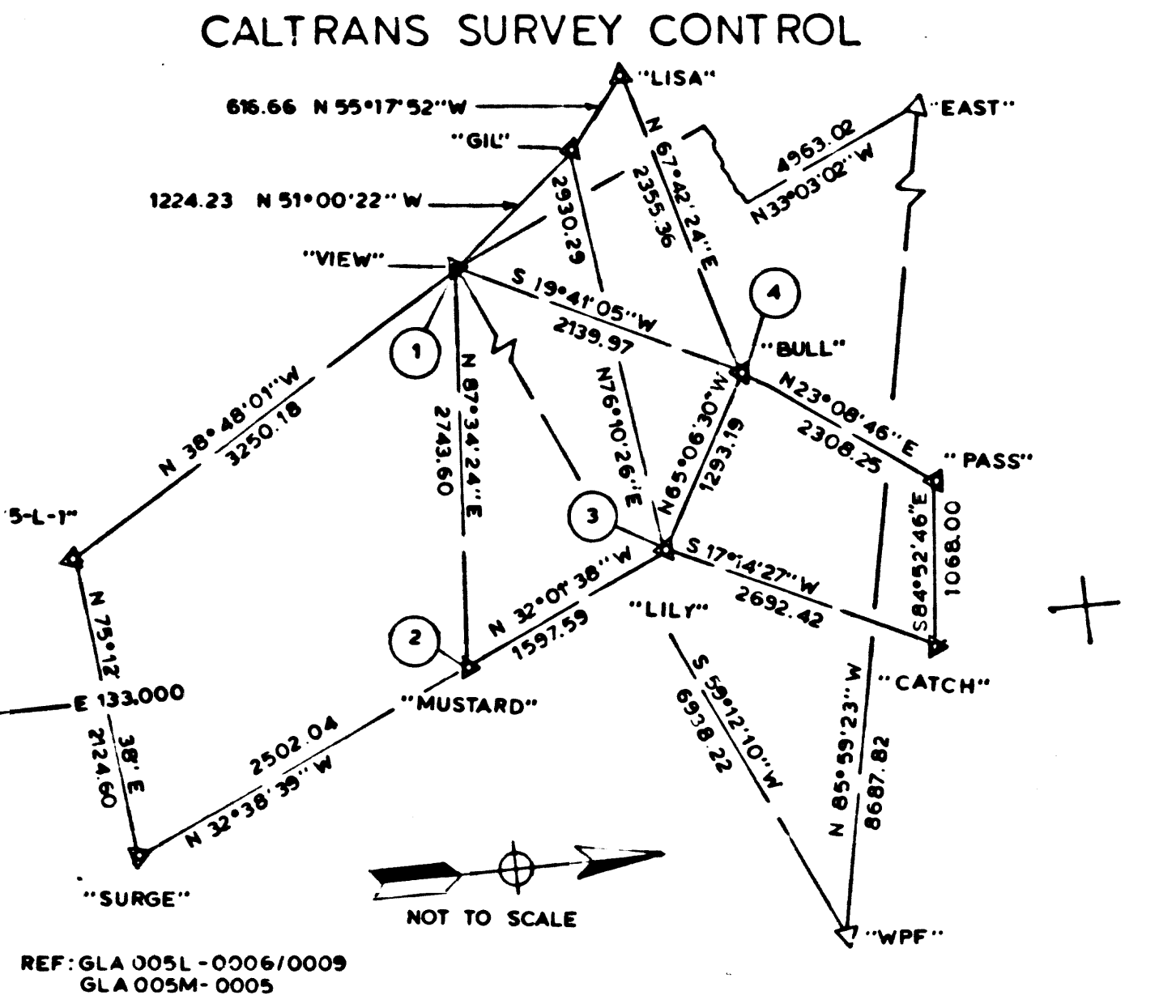
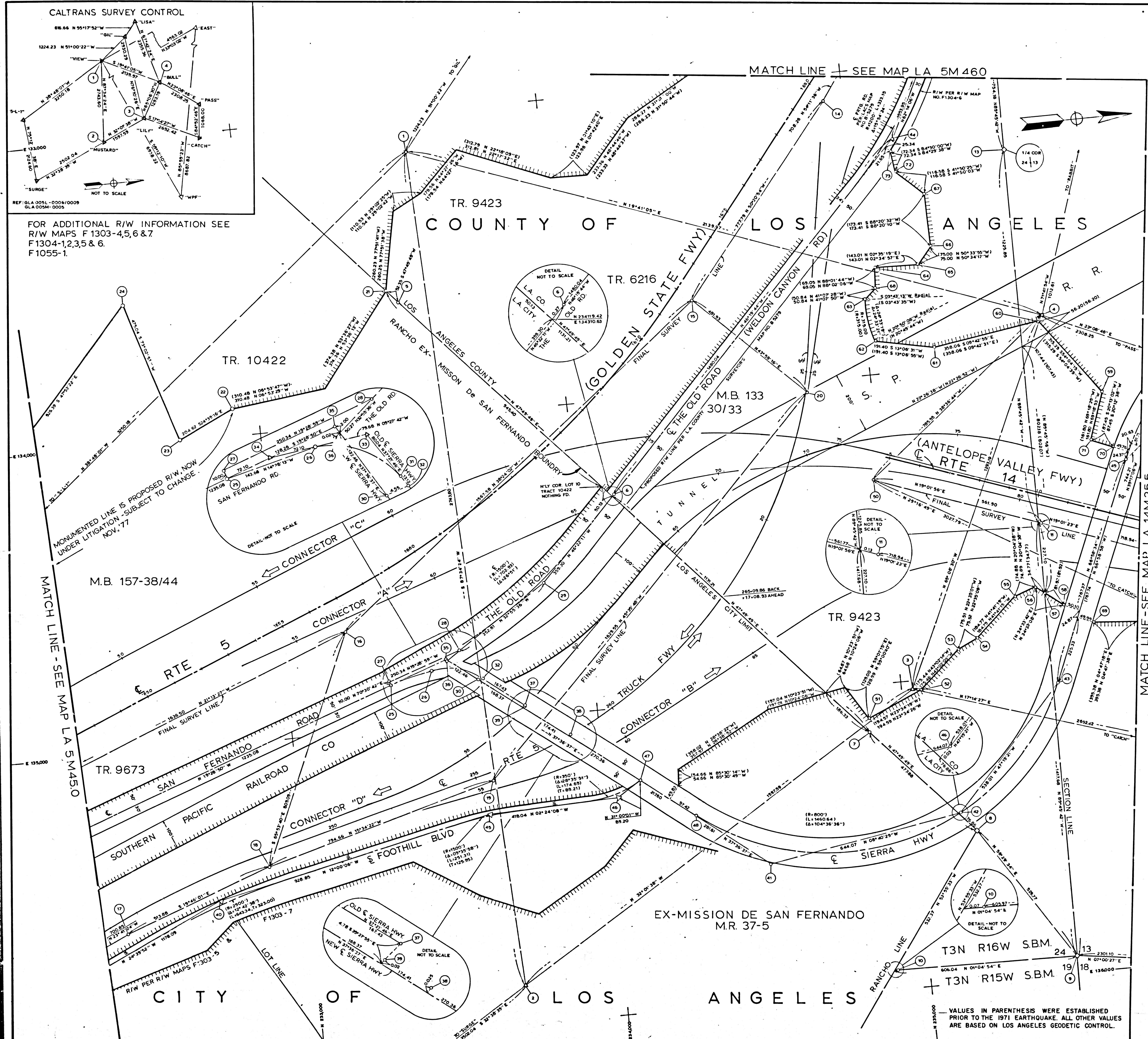
MONUMENTATION MAP

MAP NO. LA 5 M450

CALC & COMP'D BY: D. STEWART
CHECKED BY: D. STEWART
PROJECT ENGINEER: J. STEWART
D. STEWART
D. GIPPER
DATE: 3-15-78

CALIFORNIA COORDINATE SYSTEM - ZONE 7
Date: 3-15-78





FOR ADDITIONAL R/W INFORMATION SEE
R/W MAPS F 1303-4,5,6 & 7
F 1304-1,2,3,5 & 6
F 1055-1.

NO	NAME	DESCRIPTION	REFERENCE	REMARKS
1	"VIEW"	FD BR CAP MON	GLA 005-0009	N 23565.84 E 13313.03
2	"MUSTARD"	"	"	N 23662.01 E 13567.17
3	"LIL"	"	"	N 235036.44 E 135028.93
4	"BULL"	"	"	N 235580.75 E 133853.87
5	"CITY CO LN"	FD LACE BR CAP MON	LACE FB 234-133pg 101	
6	"SP 15"	"	"	N 235194.65 E 135503.22
8	SEC CDR	"	"	N 23592.10 E 135544.95
10	RD/SEC LN	"	"	
11	SET BR CAP IN 2" IP	SR 74-105 pg 0002		N 235503.10 E 135501.45
13	1/4 COR	SET CS BR CAP MON - RE 22726	LA CSFB 3878-44	N 234937.33 E 133299.59
14	LAS 45.9"	SET BR CAP MON IN 2" IP	SR 74-106 pg 0006	N 23444.00 E 133698.44
15	LAS 45.7"	"	"	N 233212.90 E 134672.15
16	LAS 45.4"	"	"	N 232398.45 E 135584.47
17	242-33.028"	SET L & T	SR 74-119 pg 0006	N 232382.06 E 135410.68
18	247-54.906"	"	"	N 233647.55 E 135137.55
19	255-45.398"	"	"	N 233630.19 E 134864.53
20	24-35.000"	"	"	
21	SET 1" IP W/ PLASTIC CDH PLUG	SR 74-070 pg 0004,6		
22	SET MON COVER OVER ORIG. 2" IP	LACE FB 234-133pg 102		
23	SET SPK & T	"	"	
24	SET SPK & W	"	"	
25	STRANGE	FD SPK IN LEAD	"	"
26	FD SPK	"	"	"
27	SET SPK & W	"	"	"
28	SET SPK T & W	"	"	"
29	FD "C" NAIL	RLA 005M - 011		N 233531.59 E 134788.57
30	FD SPK & BATHY	NO RECORD		
31	SET MON COVER OVER RR SPK	LACE FB 231-133pg 104		
32	FD L & T	LACE FB 234-133pg 108		
33	FD "PK" NAIL	SR 76-016 pg 22		N 232713.23 E 135495.32
34	SET SO SPK & W	SR 76-016 pg 0018		
35	SET RH NAIL	"	"	"
36	FD LACE BR CAP MON	LACE FB 234-133pg 101		
37	FD "C" NAIL W/ 2 L & T TIES	SR 76-016 pg 0024		N 235512.77 E 135500.71
38	SET SO SPK	LA CSFB 3878-47		N 23514.60 E 133239.90
39	SET SO SPK & W	SR 76-016 pg 0018		N 234115.90 E 135238.72
40	SET SPK & BATHY	pg 0023		N 234288.31 E 135237.24
41	FD "C" NAIL W/ 2 L & T TIES	SR 76-016 pg 0024		N 235812.90 E 134344.46
42	4-86 25	SET BR CAP IN 2" IP	SR 74-105 pg 0002	N 234760.93 E 134344.09
43	SET 1" IP W/ PLASTIC CDH PLUG	SR 76-016 pg 0010		
44	SET NAIL & TAG IN B&B STUB	"	"	
45	SET "C" NAIL	"	"	
46	SET "C" NAIL & TAG	"	"	
47	SET "NO" SPK & W	"	"	

LEGEND

- ▲ SURVEY CONTROL POINTS
- POINTS OF SURVEY
- △ ANGLE POINTS
- ◇ SECTION CORNERS, RANCHO CORNERS
- RECORDED VALUE AS ESTABLISHED PREVIOUSLY
- () VALUE ESTABLISHED BY DISTRICT 7 RIGHT OF WAY BRANCH

NOTE

- BEARINGS ARE BASED ON THE CALIFORNIA COORDINATE SYSTEM, DIVISION 8, SECTION 8009 OF THE 1953 PUBLIC RESOURCES CODE.
- DEPARTMENT OF TRANSPORTATION SURVEY INFORMATION IS AVAILABLE FROM THE SURVEY SECTION OF THE ENGINEERING SERVICES BRANCH, LOS ANGELES, CALIFORNIA.
- DEPARTMENT OF TRANSPORTATION RIGHT OF WAY INFORMATION IS AVAILABLE FROM THE RIGHT OF WAY BRANCH, LOS ANGELES, CALIFORNIA.
- STATIONING SHOWN ON THIS MAP IS FOR REFERENCE ONLY.

IN LOS ANGELES COUNTY
BLK. 2313 MOD. 34

GRID WAS ESTABLISHED FROM
EAST: N 4237.725 75 WFF: N 4237.118 21
E 4130.426 31 E 4130.092 86
GRID FACTOR: .999999999 REF: PCM 5/14

CONSTRUCTION CONTRACT NO. 07-287844 COMPLETION DATE: 02/11/75

ORIGINAL SCALE: 1" = 100'
100 200 300 400 500 FEET

LOS ANGELES COUNTY FILE NO.

STATE OF CALIFORNIA - DEPARTMENT OF TRANSPORTATION - SURVEYS

DISTRICT	COUNTY	ROUTE	POST MILES - TOTAL PROJECT	SHEET NO.	TOTAL SHEETS	DATE OF SURVEY	OFFICE SUPERVISOR
07	LA	5/14	45.0-46.7	2	3	07/10/77	L. ZEPHURUS

MONUMENTATION MAP

MAP NO. LA 5/14 M455

CHECKED BY: A. J. MANGIARELLI
PROJECT ENGINEER: J. J. STEWART

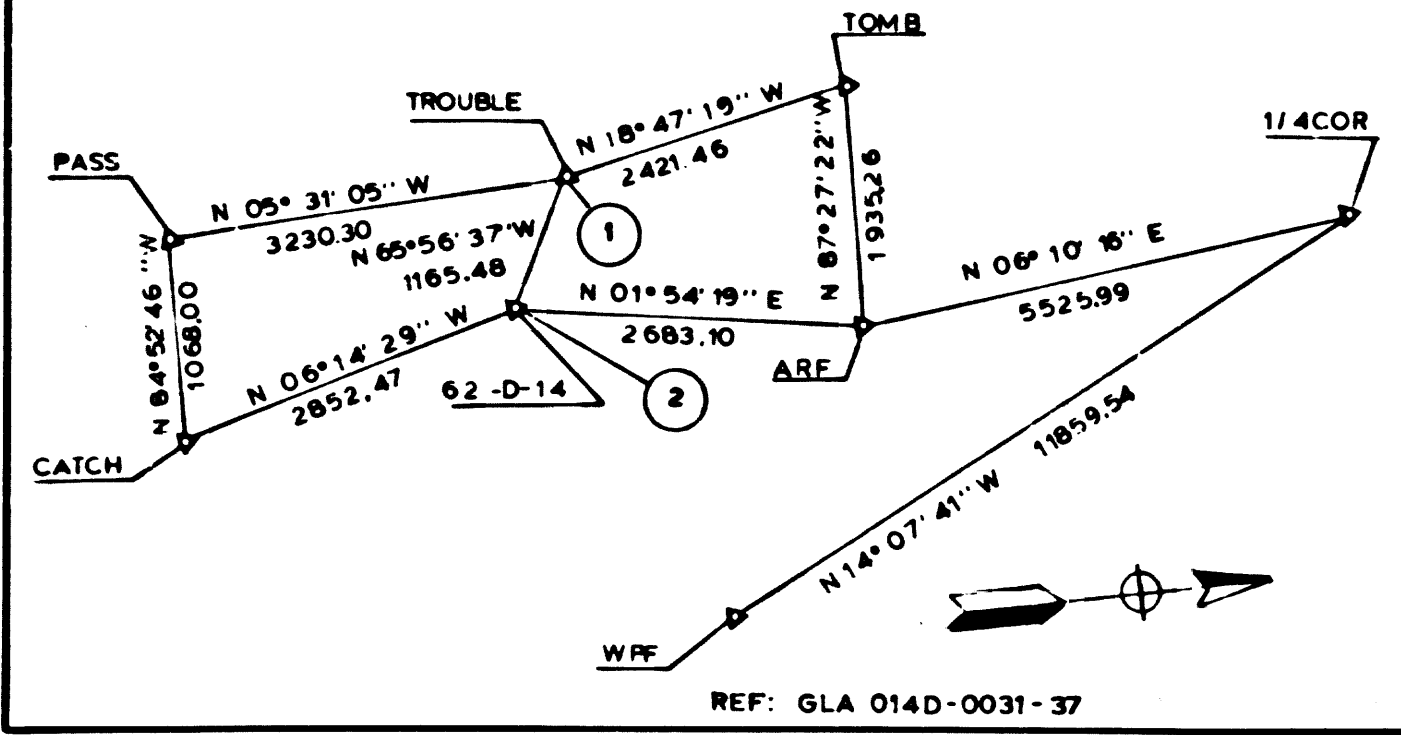
CHECKED BY: D. STEWART
DESIGNED BY: J. J. STEWART

CALIFORNIA COORDINATE SYSTEM - ZONE 7
DATE: MAY 3, 1978

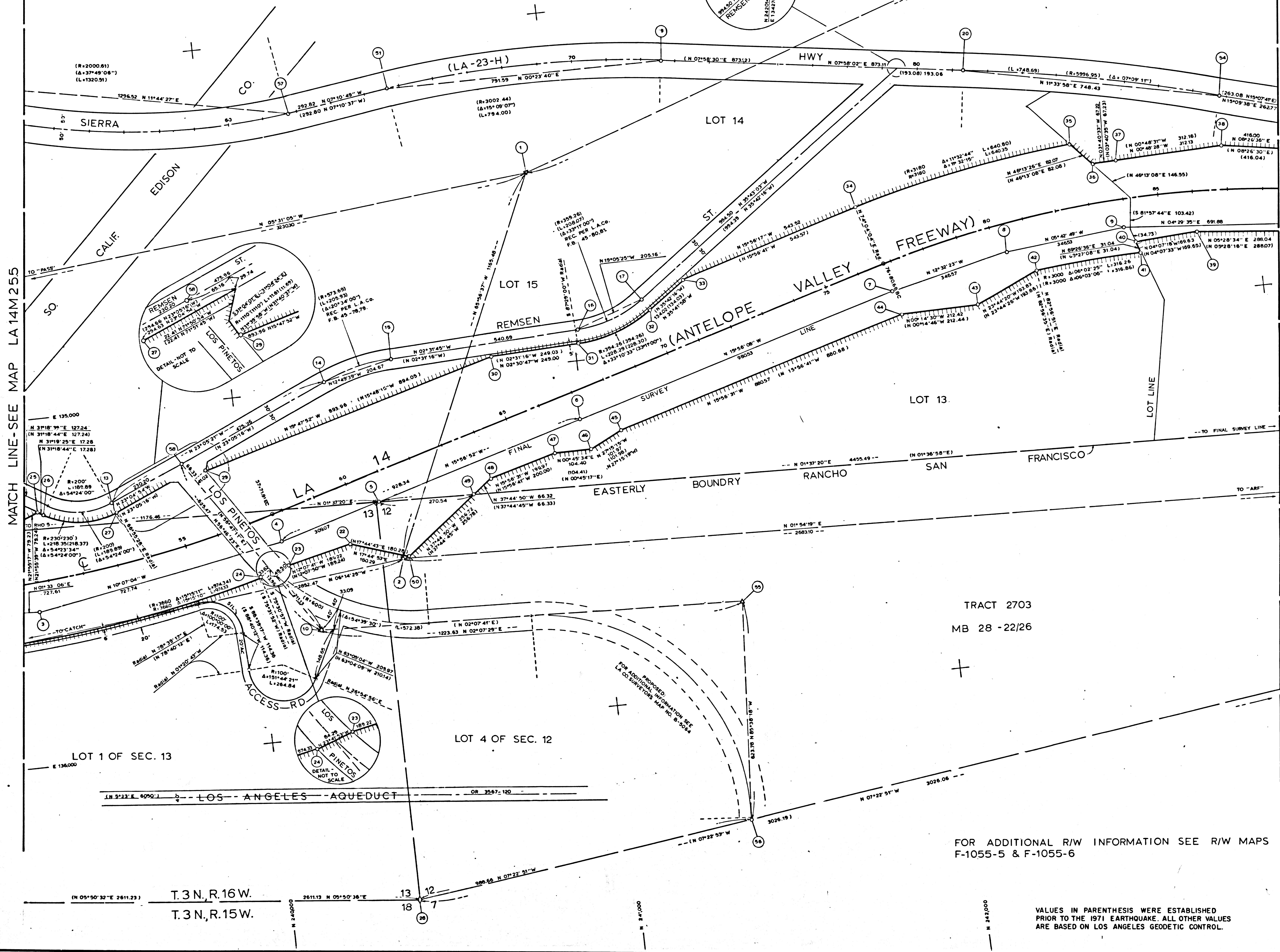
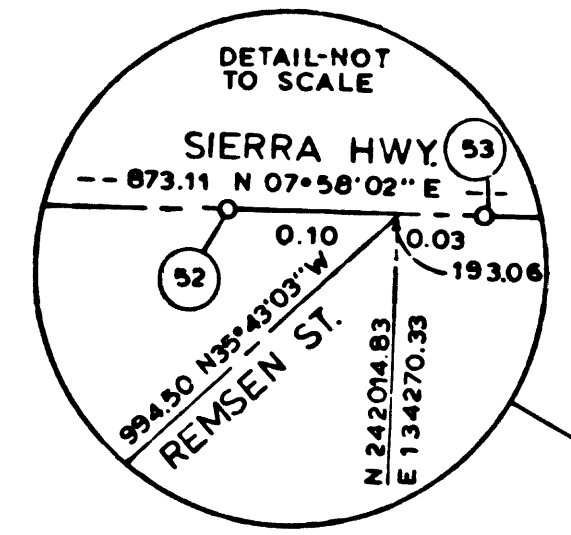
VALUES IN PARENTHESIS WERE ESTABLISHED PRIOR TO THE 1971 EARTHQUAKE. ALL OTHER VALUES ARE BASED ON LOS ANGELES GEODETIC CONTROL.

FM 21262-2

CALTRANS
SURVEY CONTROL
NOT TO SCALE



TRACT NO 2703 COUNTY OF LOS ANGELES
MB. 28- 20/26



NO	NAME	DESCRIPTION	REFERENCE	REMARKS
1	TROUBLE	FD BR CP	GLA 014D-0032-34	N 240318.97 E 134450.57
2	62-D-14	"	"	N 240443.44 E 135054.82
3	75	SET BR CAP IN 2"IP	SR 74-105-0004	N 239380.09 E 135055.58
4	50-59 EC	SET BR CAP ON BR DECK	SR 74-105-0005	N 240096.91 E 135428.73
5	57-7	SET BT SPK & W	"	"
6	87-00 20	SET BR CAP IN 2"IP	"	N 240589.12 E 135173.66
7	76-80 58 EC	"	"	N 241919.97 E 134904.45
8	80-39 20 181	"	"	N 242370.28 E 134829.20
9	83-54 21 113	"	"	N 242310.08 E 134794.70
10	PI-3	SET 2"IP W/ CONC. PLUG & LA. CO. ENGR. TAG	LA CSFB 3205-71	N 240178.69 E 135697.17
11	17	FD BT SPK & W	A 58001-22-26	"
12	20	FD N & T	A 58001-9-10	"
13	22	SET 1"IP & PLASTIC PLUG	SR 77-016-0010	"
14	23	SET SURE SET N&CAL TRAN TAG	"	"
15	24	"	"	"
16	25	SET 1"IP & PLASTIC PLUG	"	"
17	26	"	"	"
18	SEC COR	FD C.S. BR CAP MON	LA CSFB 3205-79	N 240373.57 E 136491.91
19	27	SET 1"IP & PLASTIC PLUG	SR 77-016-0010	"
20	28	SET SURE SET N&CAL TRAN TAG	"	"
21	29	SET 1"IP & PLASTIC PLUG	"	"
22	30	"	"	"
23	31	SET 1"IP & PLASTIC PLUG	"	"
24	32	"	"	"
25	33	SET 1"IP & PLASTIC PLUG	"	"
26	34	"	"	"
27	35	FD L & T TIES	A 58001-8	"
28	36	FD "C" NAIL	" - 26	"
29	37	FD BT SPK & W	ALA 014D-0158	N 242939.25 E 134447.15
30	38	SET 2"IP W/ CONC. PLUG & LA. CO. ENGR. TAG	LA CSFB 3205-73	"
31	39	FD N & T	" - 80	N 241354.04 E 136064.91
32	40	FD BT SPK, T & W	ALA 140-0097	N 240259.25 E 134207.22
33	41	"	"	N 239835.96 E 135733.95

MATCH LINE-SEE MAP LA 14M255

MATCH LINE-SEE MAP LA 14M265

LEGEND

- △ SURVEY CONTROL POINTS
- POINTS OF SURVEY
- ANGLE POINTS
- SECTION CORNERS, RANCHO CORNERS
- RECORDED VALUE AS ESTABLISHED PREVIOUSLY
- () VALUE ESTABLISHED BY DISTRICT 7 RIGHT OF WAY BRANCH

NOTE:

- BEARINGS ARE BASED ON THE CALIFORNIA COORDINATE SYSTEM, DIVISION 8, SECTION 8809 OF THE 1953 PUBLIC RESOURCES CODE.
- DEPARTMENT OF TRANSPORTATION SURVEY INFORMATION IS AVAILABLE FROM THE SURVEY SECTION OF THE ENGINEERING SERVICES BRANCH, LOS ANGELES, CALIFORNIA.
- DEPARTMENT OF TRANSPORTATION RIGHT OF WAY INFORMATION IS AVAILABLE FROM THE RIGHT OF WAY BRANCH, LOS ANGELES, CALIFORNIA.
- STATIONING SHOWN ON THIS MAP IS FOR REFERENCE ONLY.

IN LOS ANGELES COUNTY
BLK. 2413 MOD. C5

GRID WAS ESTABLISHED FROM
714COR N 423716.21 E 433902.86
DECEMBER 1971
GRID FACTOR: .9999755 REF. P.C.M. 9/74

CONSTRUCTION CONTRACT NO. 07-287844 COMPLETION DATE: 2/11/75

ORIGINAL SCALE: 1" = 100'
100 200 300 400 500 FEET

LOS ANGELES COUNTY FILE NO.

STATE OF CALIFORNIA - DEPARTMENT OF TRANSPORTATION - SURVEYS

DISTRICT	COUNTY	ROUTE	POST MILES - TOTAL PROJECT	SHEET NO.	TOTAL SHEETS	Chief of Party	Office Supervisor
07	LA	14	24.6-27.0	2	3	E. THOMPSON	L. STEWART

MONUMENTATION MAP

MAP NO. LA 14M26.0

Project Engineer: A.J. MANGIARELLI & D. STEWART
Checked by: G. STEWART
Drawn by: A.J. MANGIARELLI & D. STEWART
Checked by: G. STEWART

CALIFORNIA COORDINATE SYSTEM - ZONE 7

DATE: 3-10-78

TRACT 2703
MB 28-22/26

FOR ADDITIONAL R/W INFORMATION SEE R/W MAPS
F-1055-5 & F-1055-6

VALUES IN PARENTHESIS WERE ESTABLISHED
PRIOR TO THE 1971 EARTHQUAKE. ALL OTHER VALUES
ARE BASED ON LOS ANGELES GEODETIC CONTROL.

FN 21262-5

