



IN LOS ANGELES COUNTY  
 BETWEEN  
 HILLMONT AVE  
 AND  
 ORANGE GROVE BLVD

Bearings are based on the California Coordinate System,  
 Zone VII, Section 8809 of the Public Resources Code.

Division of Highways survey information is available from  
 Engineering Services Dept., Los Angeles, Cal.

Division of Highways right-of-way information is available from  
 Right of Way Department, Los Angeles, California.

REFERENCE MATERIAL  
 FLA 134C - 40 to 42  
 ALA 134C - 186, 217 to 219, 226 to 240  
 CCM 173.46  
 CCM 173.47  
 CCM 173.2  
 CCM 173.3  
 CCM 173.4

L.A. COUNTY FILE NO. F.M. 21269-1

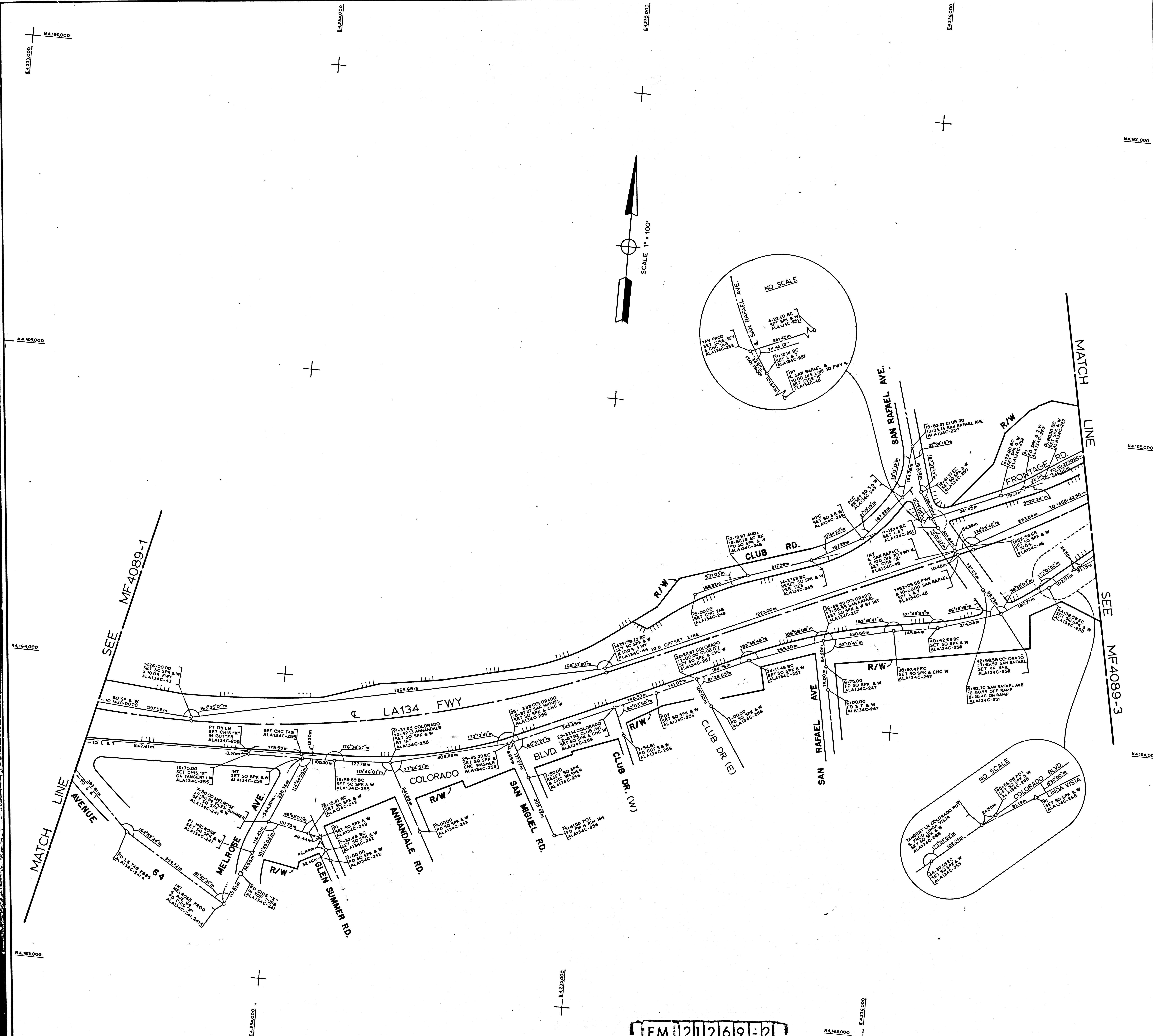
NOTE:  
 LETTER "m" FOLLOWING DISTANCE OR ANGLE INDICATES MEASURED.

DISTRICT	COUNTY	ROUTE	POST MILES - TOTAL PROJECT	SHEET NO.	TOTAL SHEETS	DATE OF THIS SHEET
07	LA	134	R11.2 - 13.2	1	3	J. NELSON
STATE OF CALIFORNIA DIVISION OF HIGHWAYS						
SURVEYS			MONUMENTATION MAP		DATE: CALIFORNIA COORDINATE SYSTEM - ZONE 7	
MAP NO. MF 4089-1			DATE: 2-2-72		DRAWN BY: F. A. MAAS	
6729			DATE: 3-72		CHECKED BY: S. L. ELICKS	

F.M. 21269-1

F.M. 21269-1





IN LOS ANGELES COUNTY  
 BETWEEN  
 HILLMONT AVE.  
 AND  
 ORANGE GROVE BLVD

Bearings are based on the California Coordinate System,  
 Zone VII, Section 8609 of the Public Resources Code.  
 Division of Highways survey information is available from  
 Engineering Services Dept., Los Angeles, Cal.  
 Division of Highways right-of-way information is available from  
 Right of Way Department, Los Angeles, California.

REFERENCE MATERIAL  
 FLA 134C - 43 to 46  
 ALA 134C - 241 to 259  
 CCM 173.3  
 CCM 174.21

L.A. COUNTY FILE NO. F.M. 21269-2

NOTE:  
 LETTER "m" FOLLOWING DISTANCE OR ANGLE INDICATES MEASURED

DISTRICT	COUNTY	ROUTE	POST MILES - TOTAL PROJECT	SHEET NO.	TOTAL SHEETS	Drawn by
07	LA	134	R112 - 132	2	3	J. NELSON
STATE OF CALIFORNIA DIVISION OF HIGHWAYS SURVEYS						
MONUMENTATION MAP				Checked by	G. MUELLER	
DATUM: CALIFORNIA COORDINATE SYSTEM - ZONE 7				Project Engineer	E. DEMPSEY F. ENOKI	
MAP NO. MF 4089-2				Survey Office Supervisor	E. L. GREENGARD	
6719				District Survey Engineer	F. A. MAAS	
C.E. 6729				Approved & witnessed by	S. L. ELICKS	
Survey Date: 3-72				Deputy District Engineer	W. F. POND	

F.M. 21269-2

F.M. 21269-2





SEE MF4125-1

SEE MF4089-2

LINE

MATCH

IN LOS ANGELES COUNTY  
 BETWEEN  
 HILLMONT AVE  
 AND  
 ORANGE GROVE BLVD

Bearings are based on the California Coordinate System,  
 Zone VII, Section 8809 of the Public Resources Code.  
 Division of Highways survey information is available from  
 Engineering Services Dept., Los Angeles, Cal.  
 Division of Highways right-of-way information is available from  
 Right of Way Department, Los Angeles, California.

REFERENCE MATERIAL  
 FLA 134C - 46 to 51, 84 to 86  
 ALA 134C - 260 to 276  
 CCM 174.21  
 CCM 174.22

L.A. COUNTY FILE NO. F.M. 21269-3

NOTE:  
 LETTER "m" FOLLOWING DISTANCE OR ANGLE INDICATES MEASURED.

DISTRICT	COUNTY	ROUTE	POST MILES - TOTAL PROJECT	SHEET NO.	TOTAL SHEETS	DATE	BY	CHECKED BY
07	LA	134	R 112 - 132	3	3		J. NELSON	J. NELSON
STATE OF CALIFORNIA DIVISION OF HIGHWAYS								
SURVEYS								
MONUMENTATION MAP								
DATUM: CALIFORNIA COORDINATE SYSTEM - ZONE 7								
MAP NO. MF 4089-3								
Project Engineer: G. MUELLER, G. MUELLER								
Survey Office Supervisor: E. L. GREENGARD								
District Survey Engineer: F. A. MAAS								
Deputy District Engineer: W. E. FOND								
Approved: S. L. ELICKS								

F.M. 21269-3

F.M. 21269-3