

IN LOS ANGELES COUNTY
 BETWEEN
 HARVEY DR
 AND
 HILLMONT AVE

Bearings are based on the California Coordinate System,
 Zone VII, Section 8809 of the Public Resources Code

Division of Highways survey information is available from
 Engineering Services Dept., Los Angeles, Cal.

Division of Highways right-of-way information is available from
 Right of Way Department, Los Angeles, California

REFERENCE MATERIAL
 FLA 134B - 35 to 47
 ALA 134C - 123 to 144
 ALA 134B - 69 to 111
 CCM 115.4
 CCM 173.42

NOTE:
 LETTER "m" FOLLOWING DISTANCE OR ANGLE INDICATES MEASURED

DISTRICT	COUNTY	ROUTE	POST MILES - TOTAL PROJECT	NO. SHEETS	DATE	PREPARED BY
07	LA	134	RB9 - 11.2	1 4		R A EDMONDS
STATE OF CALIFORNIA DIVISION OF HIGHWAYS SURVEYS						CHECKED BY
MONUMENTATION MAP						G MUELLER G MUELLER
DATUM: CALIFORNIA COORDINATE SYSTEM - ZONE 7						DESIGNED BY
MAP NO. MF 4088-1						E DEMPSEY F ENOKI
C.E. <i>W.F. Pond</i> 2/17/72						SURVEY OFFICE SUPERVISOR
DATE						E L GREENGARD
DRAWN BY						F A MAAS
DATE						APPROVED & RECOMMENDED BY
DATE						S L ELICKS

F.M. 21270-1

F.M. 21270-1



IN LOS ANGELES COUNTY
 BETWEEN
 HARVEY DR
 AND
 HILLMONT AVE

Bearings are based on the California Coordinate System,
 Zone VII, Section 8809 of the Public Resources Code

Division of Highways survey information is available from
 Engineering Services Dept., Los Angeles, Cal.

Division of Highways right-of-way information is available from
 Right of Way Department, Los Angeles, California

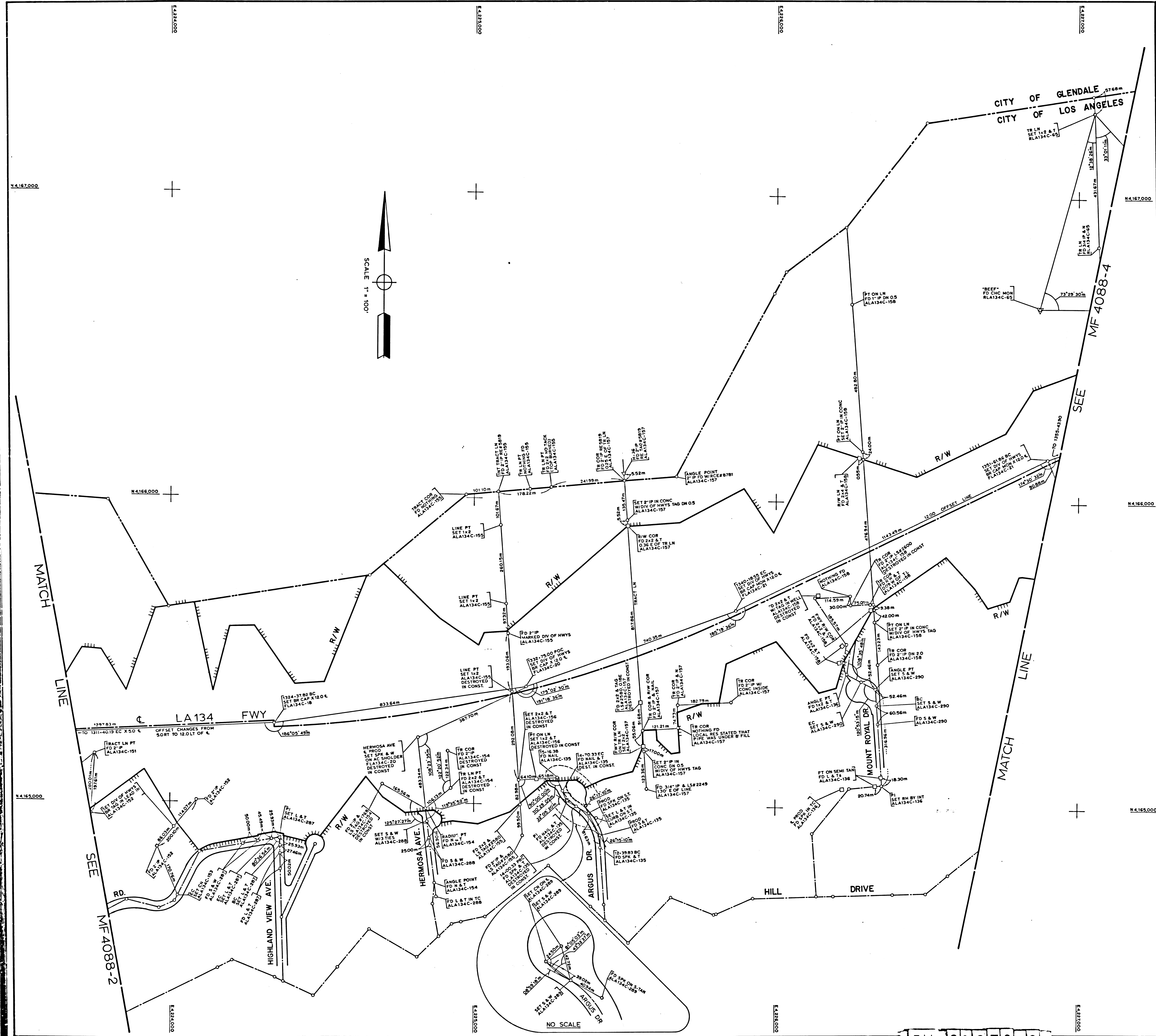
- REFERENCE MATERIAL
- FLA 134B - 35 to 47
 - ALA 134C - 123 to 144
 - ALA 134B - 69 to 111
 - CCM 173.4
 - CCM 173.42
 - CCM 173.43

NOTE
 LETTER "m" FOLLOWING DISTANCE OR ANGLE INDICATES MEASURED.

DISTRICT	COUNTY	ROUTE	POST MILES - TOTAL PROJECT	SHEET NO.	TOTAL SHEETS	Drawn by	Checked by
07	LA	134	R 89 - 11.2	2	4	R. A. EDMONDS	G. MUELLER
STATE OF CALIFORNIA DIVISION OF HIGHWAYS						Project Engineer	Checked by
SURVEYS						E. DEVPSEY	F. ENOKI
MONUMENTATION MAP						Survey Office Supervisor	E. L. GREENGARD
DATUM: CALIFORNIA COORDINATE SYSTEM - ZONE 7						Survey Engineer	F. A. MAAS
MAP NO. MF 4088-2						Assistant District Engineer	S. L. ELICKS
6724	W. J. Pond		2/1/72			Approved	
C.E.	Deputy District Engineer		Date			Assistant District Engineer	
Survey Map	W. E. POND					S. L. ELICKS	
Map No.							
Date							

F.M. 21270-2

F M 21270-2



IN LOS ANGELES COUNTY
 BETWEEN
 HARVEY DR
 AND
 HILLMONT AVE

Bearings are based on the California Coordinate System,
 Zone VII, Section 8809 of the Public Resources Code

Division of Highways survey information is available from
 Engineering Services Dept., Los Angeles, Cal.

Division of Highways right-of-way information is available from
 Right of Way Department, Los Angeles, California

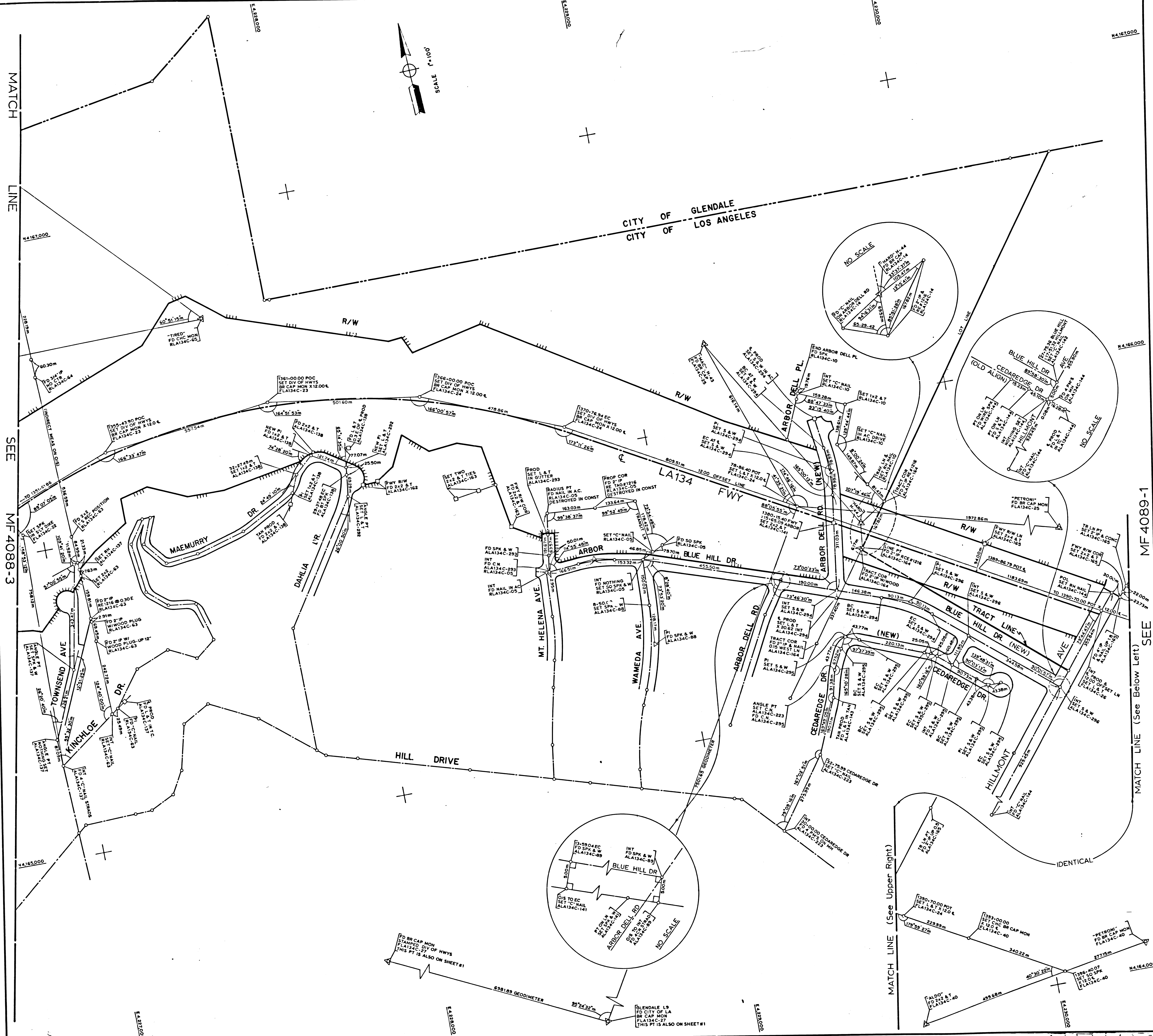
- REFERENCE MATERIAL
- FLA 134B - 35 to 47
 - ALA 134C - 123 to 144
 - ALA 134B - 69 to 111
 - CCM 1733
 - CCM 1734
 - CCM 173.43

NOTE:
 LETTER "m" FOLLOWING DISTANCE OR ANGLE INDICATES MEASURED.

DISTRICT	COUNTY	ROUTE	POST MILES - TOTAL PROJECT	SHEET NO.	TOTAL SHEETS	DATE	NAME OF PARTY
07	LA	134	RB9 - 112	3	4		R A EDMONDS
STATE OF CALIFORNIA DIVISION OF HIGHWAYS SURVEYS							DESIGNED BY
MONUMENTATION MAP							G. MUELLER
DATUM: CALIFORNIA COORDINATE SYSTEM - ZONE 7							PROJECT ENGINEER
MAP NO. MF 4088-3							E. DEMPSEY F. ENOKI
DRAWN BY							SURVEY OFFICE SUPERVISOR
W. F. POND							E. L. GREENGARD
DATE							2/17/72
DEPUTY DISTRICT ENGINEER							F. A. MAAS
APPROVED BY							APPROVED BY
S. L. ELICKS							S. L. ELICKS

F.M. 21270-3

F.M. 21270-3



CITY OF GLENDALE
CITY OF LOS ANGELES

IN LOS ANGELES COUNTY
BETWEEN
HARVEY DR
AND
HILLMONT AVE

Bearings are based on the California Coordinate System,
Zone VII, Section 8809 of the Public Resources Code

Division of Highways survey information is available from
Engineering Services Dept., Los Angeles, Cal

Division of Highways right-of-way information is available from
Right of Way Department, Los Angeles, California

- REFERENCE MATERIAL
- FLA 134B - 35 to 47
 - ALA 134C - 123 to 144
 - ALA 134B - 69 to 111
 - CCM 173.44
 - CCM 173.45
 - CCM 173.46
 - CCM 173.47

NOTE:
LETTER "m" FOLLOWING DISTANCE OR ANGLE INDICATES MEASURED

DISTRICT	COUNTY	ROUTE	POST MILES - TOTAL PROJECT	SHEET NO.	TOTAL SHEETS	DATE	BY
07	LA	134	R 89 - 112	4	4		R. A. EDMONDS
STATE OF CALIFORNIA DIVISION OF HIGHWAYS							Checked by
SURVEYS							G. MUELLER
MONUMENTATION MAP							Project Engineer
DATUM: CALIFORNIA COORDINATE SYSTEM - ZONE 7							E. DEMPSEY
MAP NO. MF 4088-4							Survey Office Supervisor
							E. L. GREENGARD
							Chief Survey Engineer
							F. A. MAAS
							Assistant District Engineer
							S. L. ELICKS

FM 21270-4