

1	A/P	Fd L & T	FLA91D-2
2	Int	Fd City of LB Mon	FLA91D-2
3	A/P	Set Br Cap Mon in 2"IP	FLA91D-12
4	Int	Set RS Nail	FLA91D-13
5	Int	Fd Cut Spk	FLA91D-3
6	A/P	Set Br Cap Mon in 2"IP	FLA91D-14
7	Int	Set RS Nail	FLA91D-15
8	Int	Fd Cut Spk & W.	FLA91D-4

IN LOS ANGELES COUNTY BETWEEN ATLANTIC BLVD. IN LOS ANGELES TO LAKEWOOD BLVD. LA 91 POST MILES R12.1 TO R14.4 Construction Contract 07-009593 Completed 10-2-70

Bearings are taken from State Coordinate Control Maps based on Sections 8809 of the Public Resources Code.

Division of Highways survey information is available from the Engineering Services Department, Los Angeles, California.

Division of Highways right-of-way information is available at Right of way Department, Los Angeles, California.

07	LA	91	R12.1 to R14.4	1	4	STREIBICH
STATE OF CALIFORNIA DIVISION OF HIGHWAYS SURVEYS						Checked by B. MULVEY
MONUMENTATION MAP DATUM CALIFORNIA COORDINATE SYSTEM - ZONE 7 MAP NO. MF4085-1						Project Engineer B. MULVEY
6724						Supervisor E. GREENGARD
E. 6729						District Survey Engineer F. A. MAAS
W. F. POND						Approved by S. L. ELICKS
Date 2-16-72						

F.M. 21271-1

F.M. 21271-1



1	B.C.	Set Brass Cap Mon in 2" I.P.	FLA 91D-16
2	POC Int.	Set R.S. Nail	FLA 91D-17
3	E.C.	Set Brass Cap Mon in 2" I.P.	FLA 91D-18
4	B.C.	Set Brass Cap Mon in 2" I.P.	FLA 91D-19
5	P.O.C.	Set Boot Spk.	FLA 91D-20
6	POC Int.	Set R.S. Nail	FLA 91D-21
7	P.O.C.	Set Boot Spk.	FLA 91D-22
8	E.C.	Set Brass Cap Mon in 2" I.P.	FLA 91D-23
9	Int.	Set R.S. Nail	FLA 91D-24
10	Int.	Set C Nail	FLA 91D-7

SEE MAP MF 4085-3

MATCH LINE

IN LOS ANGELES COUNTY BETWEEN ATLANTIC BLVD.
IN LOS ANGELES LAKEWOOD BLVD.

LA 91 POST MILES R121 TO R144
Construction Contract 07-009593
Completed 10-2-70

Bearings are taken from State Coordinate Control Maps based on Sections 8809 of the Public Resources Code.

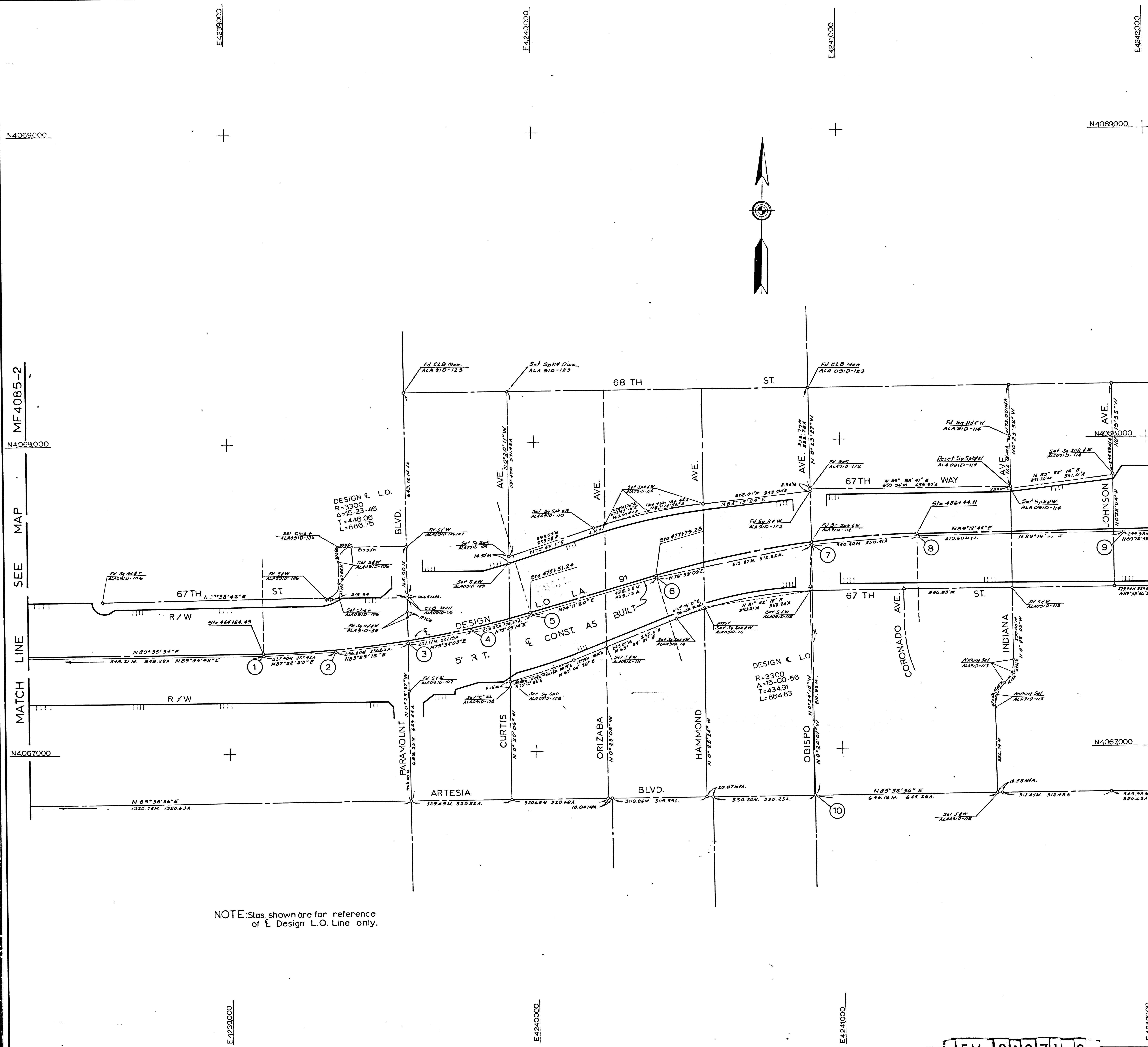
Division of Highways survey information is available from the Engineering Services Department, Los Angeles, California.

Division of Highways right-of-way information is available at Right of Way Department, Los Angeles, California.

DISTRICT	COUNTY	ROUTE	POST MILES - TOTAL PROJECT	NO.	SHEETS	DATE	BY
07	LA	91	R121 to R144	2	4		STRIEBICH
STATE OF CALIFORNIA DIVISION OF HIGHWAYS							Checked by
SURVEYS							B MULVEY I B M
MONUMENTATION MAP							Drawn by
DATUM: CALIFORNIA COORDINATE SYSTEM - ZONE 7							B MULVEY L PRICE
MAP NO. MF 4085-2							Survey Office Supervisor
							E. GREENGARD
							Direct Survey Engineer
							F.A. MAAS
							Deputy District Engineer
							W.F. FOND
							Survey Date
							S. L. ELICKS

F.M. 21271-2

FINI 21271-2



NOTE: Stas. shown are for reference of $\frac{1}{2}$ Design L.O. Line only.

SEE MAP MF 4085-4

1	B.C.	Set Br. Cap Mon. in 2" I.P.	FLA 091D-25
2	P.O.C.	Set Boal Spk.	FLA 091D-26
3	& Int.	Set R.S. Nail	FLA 091D-27
4	P.O.C.	Set Boal Spk.	FLA 091D-28
5	E.C.	Set Br. Cap Mon. in 2" I.P.	FLA 091D-29
6	B.C.	Set Br. Cap Mon. in 2" I.P.	FLA 091D-30
7	& Int.	Set R.S. Nail	FLA 091D-31
8	E.C.	Set Br. Cap Mon. in 2" I.P.	FLA 091D-32
9	P.O.T.	Set Br. Cap Mon. in 2" I.P.	FLA 091D-33
10	& Int.	Set Spk. & W.	FLA 091D-9

IN LOS ANGELES COUNTY BETWEEN ATLANTIC BLVD.
IN LOS ANGELES TO LAKEWOOD BLVD.
LA 91 Post Miles R12.1 To R14.4

Construction Contract 07-009593
Completed 10-2-70
Bearings are taken from State Coordinate Control Maps based on Sections 8809 of the Public Resources Code.

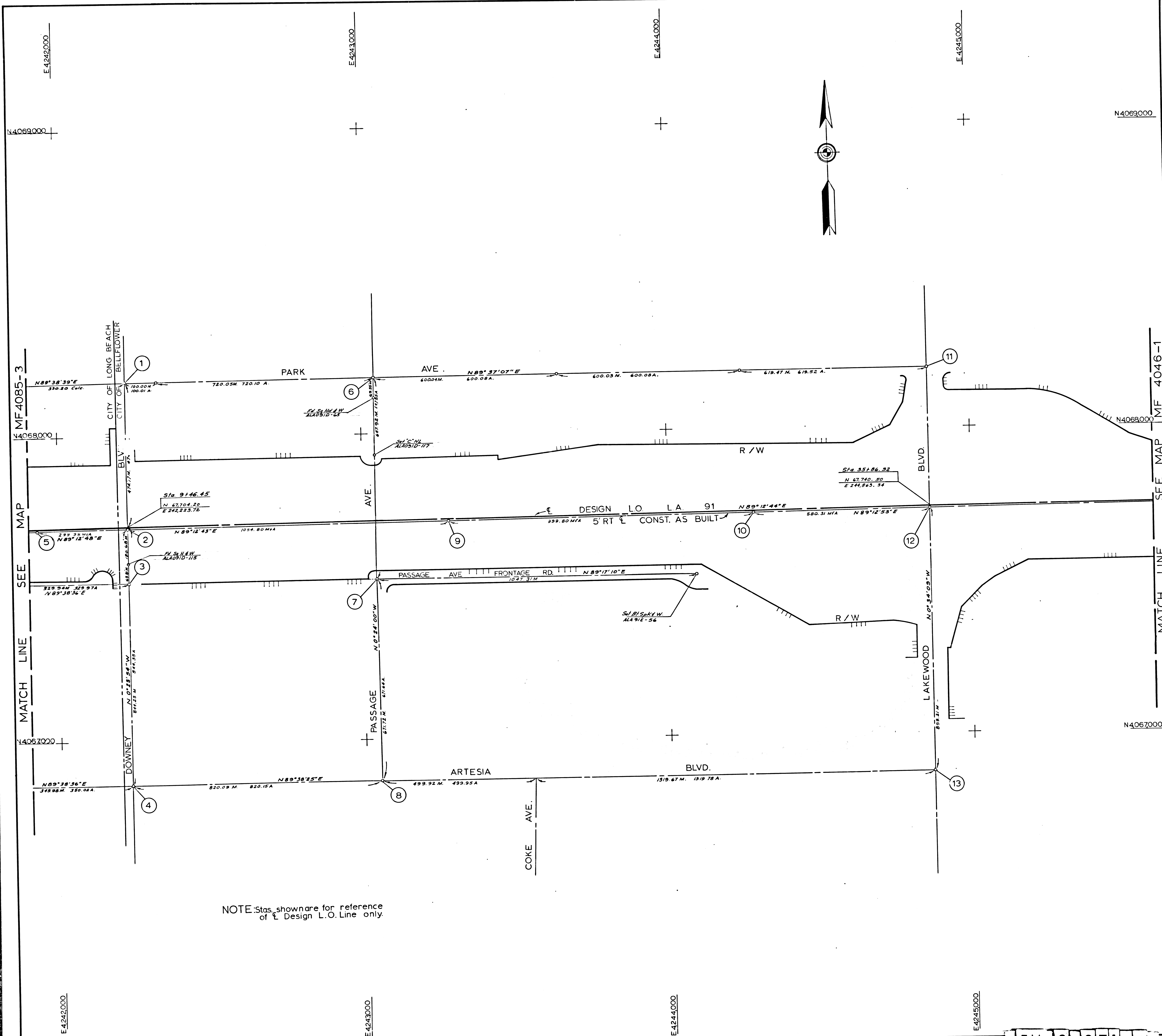
Division of Highways survey information is available from the Engineering Services Department, Los Angeles, California.

Division of Highways right-of-way information is available at Right of way Department, LOS ANGELES, CALIFORNIA.

DISTRICT	COUNTY	ROUTE	POST MILES - TOTAL PROJECT	SHEET NO.	TOTAL SHEETS	DATE	PROJECT NAME
07	LA	91	R12.1 to R14.4	3	4		STRIEBICH
STATE OF CALIFORNIA							DESIGNED BY
DIVISION OF HIGHWAYS							B. MULVEY
SURVEYS							IB.M.
MONUMENTATION MAP							PROJECT ENGINEER
DATUM: CALIFORNIA COORDINATE SYSTEM - ZONE 7							B. MULVEY
MAP NO. MF 4085-3							DEPARTMENT SUPERVISOR
							E. GREENGARD
6729	WF POND	2-16-72	DATE				DISTRICT SURVEY ENGINEER
6729	WF POND		DATE				F.A. MAAS
APPROVED BY							S.L. ELICKS

F.M. 21271-3

F.M. 21271-3



NOTE: Stas. shown are for reference of Design L.O. Line only.

1	Int.	Set 4 CN Struds on M.H.	A236.001-79
2	P.O.T. Int.	Set R.S. nail	FLA 91D-34
3	Int.	Set S.T.	A236.001-78
4	Int.	Set Sq. H. Spk. #W.	A235.001-13
5	P.O.T.	Set Br. Cap Mon.	FLA 91D-314
6	Int.	Fd. S. #W.	A236.001-80
7	Int.	Set Sq. Spk. T. #W.	ALA 091E-26
8	Int.	Set Sq. H. Spk. #W.	A236.001-29
9	P.O.T.	Set Br. Cap Mon.	FLA 091D-36
10	P.O.T.	Fd. Br. Cap Mon.	FLA 091D-56
11	Int.	Fd. L.F.T.	A236.001-81
12	P.O.T. Int.	Fd. L.F.T.	FLA 091D-37
13	Int.	Fd. Cut Spk. #W.	A236.001-11

IN LOS ANGELES COUNTY BETWEEN LAKEWOOD BLVD.
IN LOS ANGELES TO DOWNEY AVENUE
LA 91 Post Miles R121 To R14.4
Construction Contract 07-009593
Completed 10-2-70

Bearings are taken from State Coordinate Control Maps based on Sections 8809 of the Public Resources Code.

Division of Highways Survey information is available from Engineering Services Department, Los Angeles, California.

Division of Highways right-of-way information is available at Right of Way Department, Los Angeles, California.

STREET	COUNTY	ROUTE	POST MILES	TOTAL PROJECT	SHEET NO.	NO. SHEETS	DATE
07 LA 91		R121 to R14.4			41	4	2-16-72
STATE OF CALIFORNIA DIVISION OF HIGHWAYS							
SURVEYS				MONUMENTATION MAP			
MAP NO. MF 4085-4				DATE			
6729				W. F. POND			
6729				S. L. ELICKS			

F.M. 21271-4