

IN LOS ANGELES COUNTY 0.2 MI. SO. OF RTE 47 FWY
 TO WILMINGTON - SAN PEDRO RD.
 LA 11 POST MILES 0.0 TO 4.1
 LA 47 POST MILES 0.0 TO 0.9
 Construction Contract 07503-002503
 Completed 3-4-70

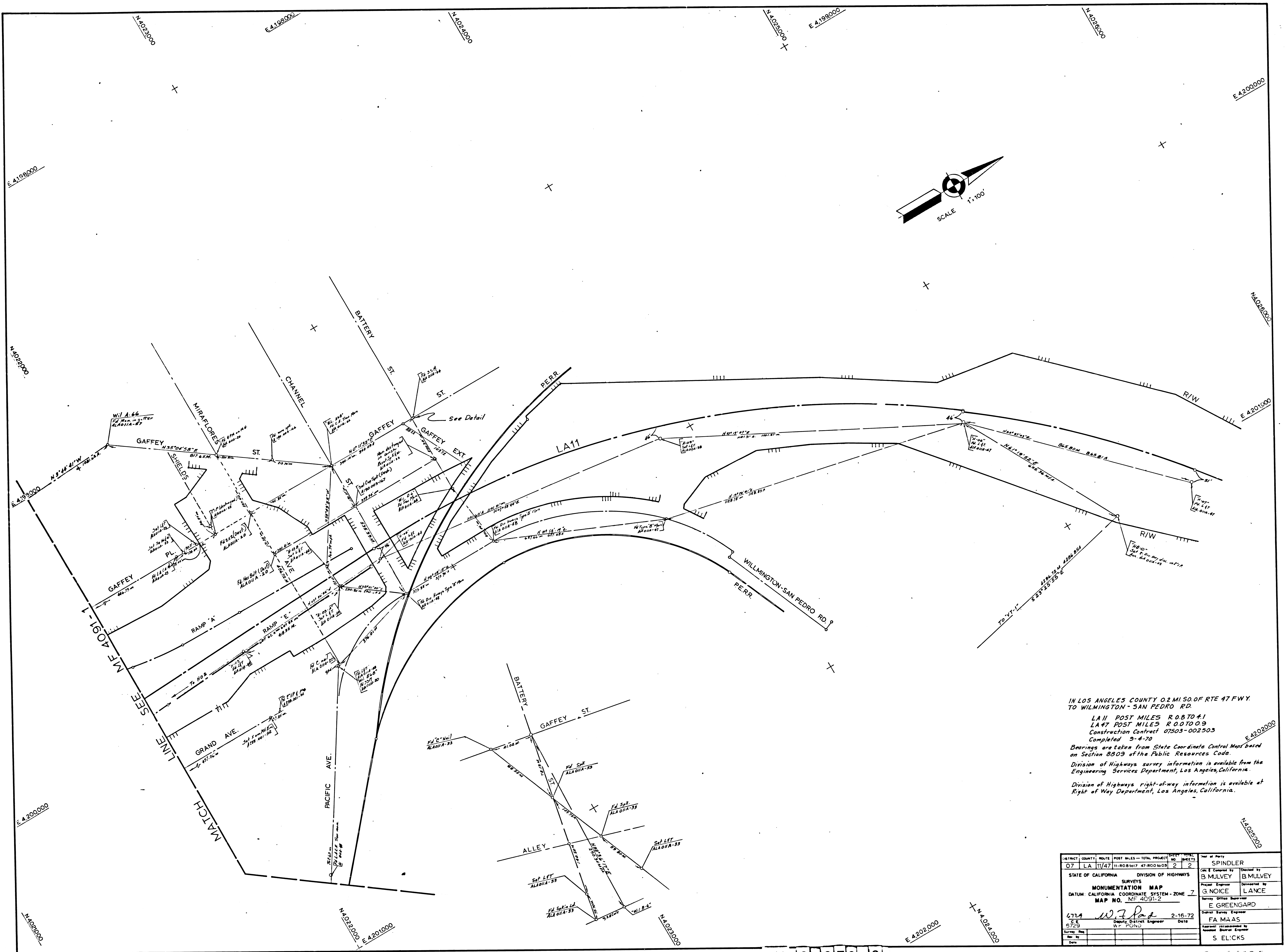
Bearings are taken from state Coordinate Control Maps based on Section 8803 of the Public Resources Code.

Division of Highways survey information is available from the Engineering Services Department, Los Angeles, California.
 Division of Highways right-of-way information is available at Right of Way Department, Los Angeles, California.

PROJECT NO.	07	COUNTY	LA	ROUTE	11/47	POST MILES - TOTAL PROJECT	0.2	NO. SHEETS	2	DATE OF PLOT	SPINDLER
STATE OF CALIFORNIA	DIVISION OF HIGHWAYS										
SURVEYS											
MONUMENTATION MAP											
DATUM: CALIFORNIA COORDINATE SYSTEM - ZONE 7											
MAP NO. MF 4091-1											
PROJECT ENGINEER	B. MULVEY										
PROJECT ENGINEER	G. NOICE										
PROJECT ENGINEER	E. GREENGARD										
DISTRICT SURVEY ENGINEER	F. MAAS										
APPROVED AND FORWARDED	S. ELICKS										

F.M. 21272-1

FM 21274-1



IN LOS ANGELES COUNTY 0.2 MILES OF RTE 47 FWY.
TO WILMINGTON - SAN PEDRO RD.
LA 11 POST MILES R 0.8 TO 4.1
LA 47 POST MILES R 0.0 TO 0.9
Construction Contract 07503-002503
Completed 5-4-70
Bearings are taken from State Coordinate Control Mark based
on Section 8309 of the Public Resources Code.
Division of Highways survey information is available from the
Engineering Services Department, Los Angeles, California.
Division of Highways right-of-way information is available at
Right of Way Department, Los Angeles, California.

DISTRICT	COUNTY	ROUTE	POST MILES - TOTAL PROJECT	SHEET NO.	TOTAL SHEETS	Year of Party
07	LA	11/47	11-R081017-47-R001009	2	2	SPINDLER
STATE OF CALIFORNIA DIVISION OF HIGHWAYS						
SURVEYS			Checked by	B MULVEY		
MONUMENTATION MAP			Prepared by	B MULVEY		
DATUM: CALIFORNIA COORDINATE SYSTEM - ZONE 7			Designed by	G NOICE		
MAP NO. MF 4091-2			Surveyed by	E GREENGARD		
674			Checked by	FA MAAS		
5729			Drawn by	S ELICKS		
Date			2-16-72			

F.M. 21272-2