

NO	NAME	DESCRIPTION	REFERENCE	COORDINATES
69	G-2A	SET L & T BY INT.	FLA 605 G-0012	
	G-2B	SET L & T BY INT.	FLA 605 G-0012	
70	G-2	FD. L & T. IN BR. DK.	FLA 605 G-0054	
71	W-5	SET . & W BY INT.	FLA 605 G-0026	
RG-11		FD. C.H.C. BR. CAP MON.	ALA 605 G-0203	
72	RG-12	FD. C.H.C. BR. CAP CONC. MON.	ALA 605 G-0145	
73	R1-4	FD. SPK. & W. AT INT. RIVERGRADE RD. & OLIVE ST.	ALA 605 G-0213	
	R1-3	FD. SPK. & W. RESET C.H.C. TYPE "B" MON.	ALA 605 G-0204	
74	OL-1	FD. BR. CAP MON. ON 18" IN H.H. 1/4 SEC. COR.	ALA 605 G-0213	
	AZ-5	INT. 2" S. L. & R. OLIVE ST. SET C.H.C. & TAG PER 4 L.B.T.S. ON CURB (No Rec.)	ALA 605 G-0212	
75	RG-12A	FD. ST. & W. IN LEVEE	ALA 605 G-0149	
76	RG-13	FD. C.H.C. BR. CAP IN 2" I.P. CONC. MON.	FLA 605 G-0013	
77	G-3	SET C.H.C. BRASS CAP MON. IN 2" I.P.	FLA 605 G-0012	
78	RG-14	SET "STATE HWY" BRASS CAP (STPD) IN 2" I.P. CONC. MON.	A369.001-25	
79	G-4	SET C.H.C. BRASS CAP MON. IN 2" I.P. NORMAL TO B.C.	FLA 605 G-0013	
80	G-5	SET C.H.C. BRASS CAP MON. IN 2" I.P. NORMAL TO E.C.	FLA 605 G-0013	
81	RG-15	FD. C.H.C. BR. CAP IN 2" I.P. CONC. MON.	FLA 605 G-0014	
	RG-16	FD. C.H.C. BR. CAP IN 2" I.P. CONC. MON.	FLA 605 G-0015	
82	G-6	SET L & T. IN BRIDGE DECK	FLA 605 G-0014	
	G-7	SET C.H.C. BR. CAP MON. IN 2" I.P. NORMAL TO P.C.T.	FLA 605 G-0014	
83		SET SSM IN BR. DK. POT. ACC. RD.	ALA 605 G-0193	
84		SET SSM IN BRIDGE DECK 21+50.67 B.C. GR. ACC. RD.	ALA 605 G-0193	

SEE M.F. 4098-4

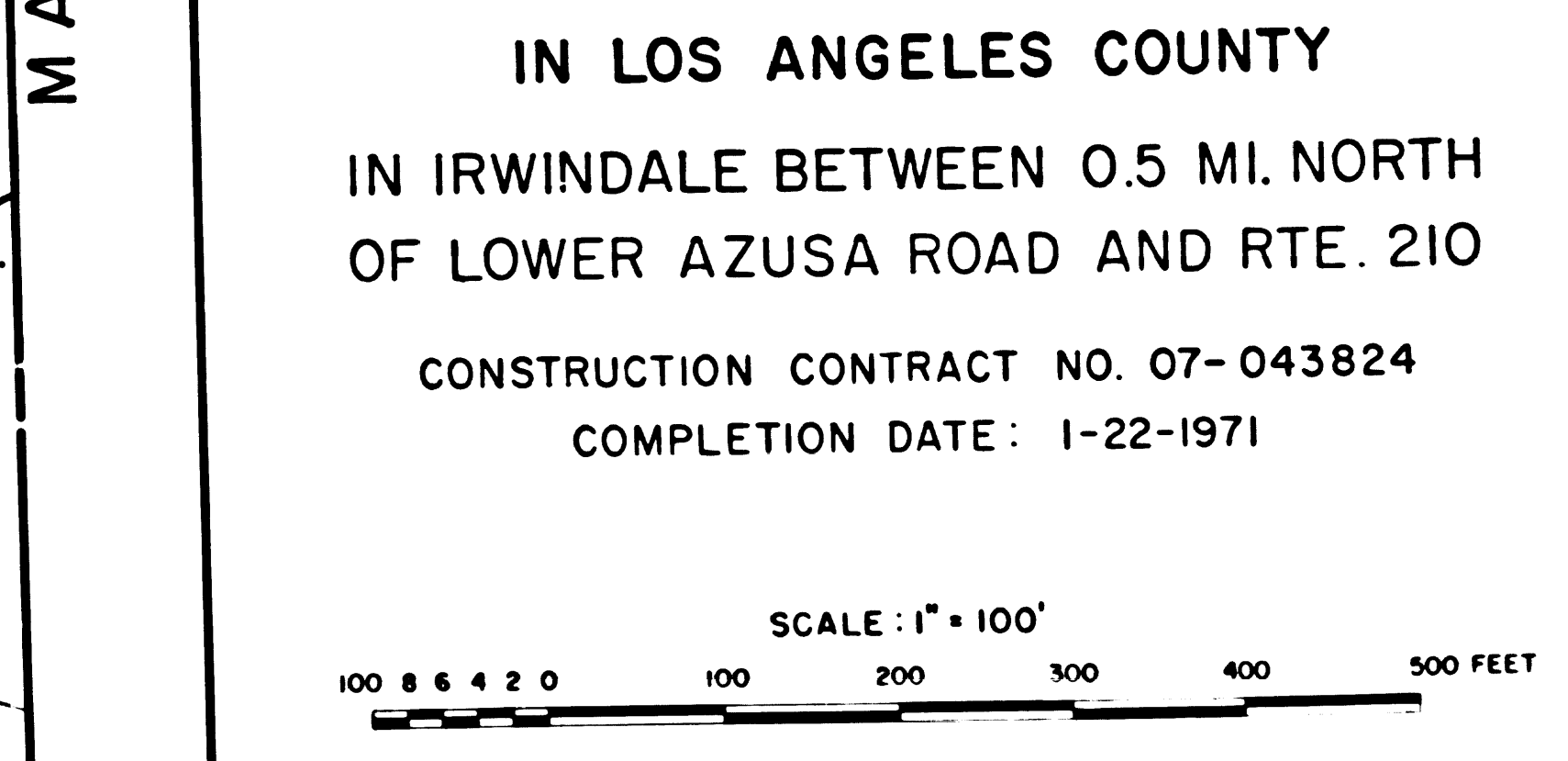
SEE M.F. 4099-2

SCALE: 1" = 100'

NOTE:

- BEARINGS ARE BASED ON THE CALIFORNIA COORDINATE SYSTEM, DIVISION 8, SECTION 8809 OF THE 1953 PUBLIC RESOURCES CODE, AND ARE DERIVED FROM THE 1971 VALUE OF THE LOS ANGELES COUNTY SURVEY CONTROL POINTS AS SHOWN. REFERENCE: C.C.M. 369.2
- DIVISION OF HIGHWAYS SURVEY INFORMATION IS AVAILABLE FROM THE ENGINEERING SERVICES DEPARTMENT, LOS ANGELES, CALIFORNIA.
- DIVISION OF HIGHWAYS RIGHT OF WAY INFORMATION IS AVAILABLE FROM THE RIGHT OF WAY DEPARTMENT, LOS ANGELES, CALIFORNIA.
- STATIONING SHOWN ON THIS MAP IS FOR REFERENCE ONLY.

IN LOS ANGELES COUNTY
 IN IRWINDALE BETWEEN 0.5 MI. NORTH
 OF LOWER AZUSA ROAD AND RTE. 210
 CONSTRUCTION CONTRACT NO. 07-043824
 COMPLETION DATE: 1-22-1971



LOS ANGELES COUNTY FILE NO. F.M. 21280-1

DISTRICT	COUNTY	ROUTE	POST MILES - TOTAL PROJECT	PROJECT NO.	NO. SHEETS	SHEET NO.
07	LA	605	227-257	1	4	1

STATE OF CALIFORNIA DIVISION OF HIGHWAYS SURVEYS
 MONUMENTATION MAP
 DATUM: CALIFORNIA COORDINATE SYSTEM - ZONE 7
 MAP NO. M.F. 4099-1

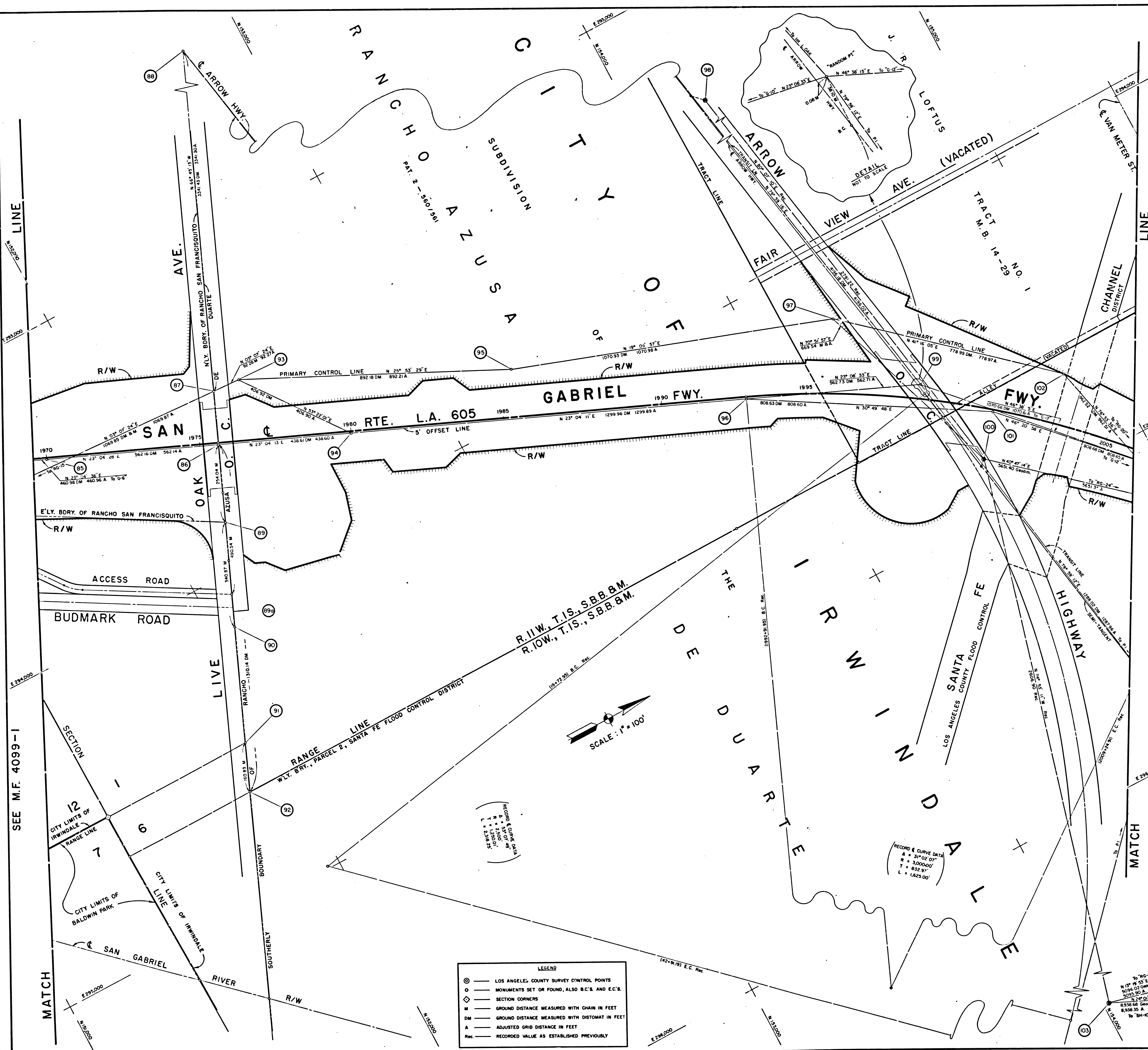
DATE: 3-6-1972
 DRAWN BY: W. J. [Signature]
 CHECKED BY: [Signature]
 DESIGNED BY: [Signature]
 SURVEYED BY: [Signature]
 FIELD SUPERVISOR: [Signature]
 DISTRICT ENGINEER: [Signature]

CE GOON
 K. STROPUS
 J. KRASZEWSKI
 K. STROPUS
 E. L. GREENGARD
 F. A. MAAS
 S. L. ELICKS

LEGEND

- LOS ANGELES COUNTY SURVEY CONTROL POINTS
- MONUMENTS SET OR FOUND, ALSO B.C.'S. AND E.C.'S
- SECTION CORNERS
- GROUND DISTANCE MEASURED WITH CHAIN IN FEET
- GROUND DISTANCE MEASURED WITH DISTOMAT IN FEET
- ADJUSTED GRID DISTANCE IN FEET
- RECORDED VALUE AS ESTABLISHED PREVIOUSLY

F.M. 21280-1



NO.	NAME	DESCRIPTION	REFERENCE	COORDINATES
85	G-7	SET C.H.C. BR. CAP MON. IN 2" I.P. NORMAL TO POT.	FLA 605 G-0014	
	G-8	SET L.B.T. IN BRIDGE DECK	FLA 605 G-0014	
86	G-8	SET L.B.T. IN BRIDGE DECK BY INTERSECTION	FLA 605 G-0016 ALA 605 G-0194	
87	G-8	INTERSECT L.O.A.M. PLAN	FLA 605 G-0027	
88	G-8	INT. ARROW B.L. OAK	FLA 605 G-0027	
89	G-8	STA 72 SAN FRANCISCO C.S. MON. DESTR. BY RD CONSTR. RESET C.H.C. MON. IN WELL	ALA 605 G-0194	
90	G-8	INT. GRAV. ACC. RD.	ALA 605 G-0096	
91	G-8	30 S.W. POT.	ALA 605 G-0194 FLA 605 G-0015	
92	G-8	INT. RANGE LN. PROD.	FLA 605 G-0027	
93	G-8	INT. RANGE LN.	FLA 605 G-0027	
94	G-8	RG-16	FLA 605 G-0027	
	RG-15	FD. C.H.C. BR. CAP IN 2" I.P. CONC. MON.	FLA 605 G-0014 -0027	
95	G-9	FD. C.H.C. BR. CAP MON. IN 2" I.P. NORMAL TO POT.	FLA 605 G-0027	
96	RG-17	SET "STATE HWY." BRASS CAP IN 2" I.P. CONC. MON.	A 369.001-27	
97	G-10	SET C.H.C. BR. CAP MON. IN 2" I.P. NORMAL TO B.C.	FLA 605 G-0016	
98	RG-18	FD. C.H.C. BR. CAP IN 2" I.P. CONC. MON.	ALA 605 G-0156	
99	AZ B-II	(L.A. CO. SURVEY CONTROL MON. AZUSA B-II) FD. L.A. CO. MON.	A 369.001-27	
100	RG-19	RANDOM PT.	FLA 605 G-0028	
	G-12	FD. C.H.C. BR. CAP MON. IN 2" I.P.	FLA 605 G-0028	
	P.I.	FD. 2" I.P. MON.	FLA 605 G-0028	
101	AZ C-IIA	(L.A. CO. SURV. CONTR. STA. "AZUSA C-IIA") FD. 3" S.P. B.W. MON. B. 2" L.B.T. TIES ON N.L.V. CB. ARROW HWY.	FLA 605 G-0057 ALA 605 G-0155 -0159	
102	G-11	SET C.H.C. BR. CAP MON. IN 2" I.P. RADIAL TO M.P.C.	FLA 605 G-0016	
103	RG-20	FD. C.H.C. BR. CAP IN 2" I.P. CONC. MON.	ALA 605 G-0156	
	RG-20	FD. C.H.C. BR. CAP IN 2" I.P. CONC. MON.	FLA 605 G-0028	
	AZ D-II	(L.A. CO. SURV. CONTR. STA. "AZUSA D-II") FD. 4" BRONZE MON. ON TOP CONC. TWP. STA. FE DAM - STPD. "AZUSA D-II"	FLA 605 G-0057 A 369.001-31	

SEE M.F. 4099-3

NOTE:

- BEARINGS ARE BASED ON THE CALIFORNIA COORDINATE SYSTEM, DIVISION 8, SECTION 8809 OF THE 1953 PUBLIC RESOURCES CODE, AND ARE DERIVED FROM THE 1971 VALUES OF THE LOS ANGELES COUNTY SURVEY CONTROL POINTS AS SHOWN.
REFERENCE: C.C.M. 369.2 & C.C.M. 369.3
- DIVISION OF HIGHWAYS SURVEY INFORMATION IS AVAILABLE FROM THE ENGINEERING SERVICES DEPARTMENT, LOS ANGELES, CALIFORNIA.
- DIVISION OF HIGHWAYS RIGHT OF WAY INFORMATION IS AVAILABLE FROM THE RIGHT OF WAY DIVISION, LOS ANGELES, CALIFORNIA.
- STATIONING SHOWN ON THIS MAP IS FOR REFERENCE ONLY.

IN LOS ANGELES COUNTY
IN IRWINDALE BETWEEN 0.5 MI. NORTH
OF LOWER AZUSA ROAD AND RTE. 210
CONSTRUCTION CONTRACT NO. 07-043824
COMPLETION DATE: 1-22-1971

SCALE: 1" = 100'
100 200 300 400 500 FEET

LOS ANGELES COUNTY FILE NO.

DISTRICT	COUNTY	ROUTE	POST MILES - TOTAL PROJECT	NO. SHEETS	SHEET NO.
07	LA	605	22.7-25.7	2	4

STATE OF CALIFORNIA DIVISION OF HIGHWAYS
SURVEYS
MONUMENTATION MAP
DATUM: CALIFORNIA COORDINATE SYSTEM - ZONE 7
MAP NO. M.F. 4099-2

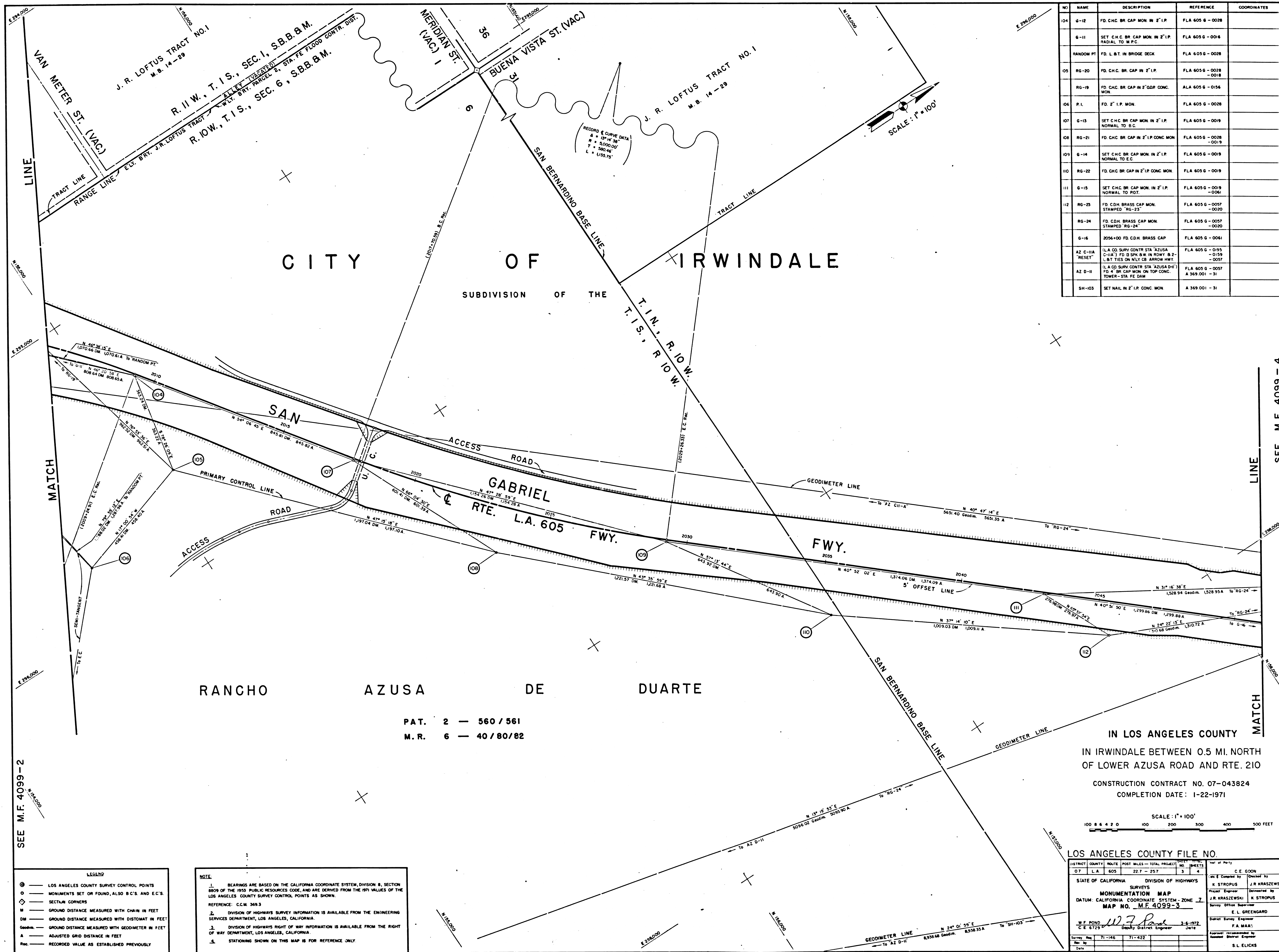
W.F. POND
C.E. 6729
Deputy District Engineer

E.L. GREENGARD
Survey Engineer
F.A. MAAS
District Engineer

S.L. ELICKS
Assistant District Engineer

LEGEND

- LOS ANGELES COUNTY SURVEY CONTROL POINTS
- MONUMENTS SET OR FOUND, ALSO B.C.'S AND E.C.'S
- ◇ SECTION CORNERS
- GROUND DISTANCE MEASURED WITH CHAIN IN FEET
- GROUND DISTANCE MEASURED WITH DISTOMAT IN FEET
- A ADJUSTED GRID DISTANCE IN FEET
- REC. RECORDED VALUE AS ESTABLISHED PREVIOUSLY



NO.	NAME	DESCRIPTION	REFERENCE	COORDINATES
104	G-12	FD. CHC. BR. CAP. MON. IN 2" I.P. RADIAL TO M.P.C.	FLA 605 G - 0028	
	G-11	SET CHC. BR. CAP. MON. IN 2" I.P. NORMAL TO B.C.	FLA 605 G - 0016	
	RANDOM PT.	FD. L.B.T. IN BRIDGE DECK	FLA 605 G - 0028	
105	RG-20	FD. CHC. BR. CAP. IN 2" I.P.	FLA 605 G - 0028	
	RG-19	FD. CHC. BR. CAP. IN 2" ODR. CONC. MON.	ALA 605 G - 0154	
106	P.L.	FD. 2" I.P. MON.	FLA 605 G - 0028	
107	G-13	SET CHC. BR. CAP. MON. IN 2" I.P. NORMAL TO B.C.	FLA 605 G - 0019	
108	RG-21	FD. CHC. BR. CAP. IN 2" I.P. CONC. MON.	FLA 605 G - 0028	
109	G-14	SET CHC. BR. CAP. MON. IN 2" I.P. NORMAL TO E.C.	FLA 605 G - 0019	
110	RG-22	FD. CHC. BR. CAP. IN 2" I.P. CONC. MON.	FLA 605 G - 0019	
111	G-15	SET CHC. BR. CAP. MON. IN 2" I.P. NORMAL TO POT.	FLA 605 G - 0019	
112	RG-23	FD. CDH. BRASS CAP. MON. STAMPED "RG-23"	FLA 605 G - 0057	
	RG-24	FD. CDH. BRASS CAP. MON. STAMPED "RG-24"	FLA 605 G - 0057	
	G-16	2056+00 FD. CDH. BRASS CAP.	FLA 605 G - 0041	
AZ C-11A	"RESET"	(I.L.A. CO. SURV. CONTR. STA. AZUSA C-11A) TO DISK B.W. IN ROW. B-2 L.B.T. TIES ON NLY CB. ARROW HWY.	FLA 605 G - 0195 -0199 -0057	
AZ D-11		(I.L.A. CO. SURV. CONTR. STA. AZUSA D-11) TO B.R. CAP. MON. ON TOP CONC. TOWER-STA. FE. DAM.	FLA 605 G - 0057 A 369.001 - 31	
SH-103		SET NAIL IN 2" I.P. CONC. MON.	A 369.001 - 31	

CITY OF IRWINDALE
SUBDIVISION OF THE T.I.N. R.I.O.W.

RANCHO AZUSA DE DUARTE

PAT. 2 - 560 / 561
M.R. 6 - 40 / 80 / 82

IN LOS ANGELES COUNTY
IN IRWINDALE BETWEEN 0.5 MI. NORTH
OF LOWER AZUSA ROAD AND RTE. 210
CONSTRUCTION CONTRACT NO. 07-043824
COMPLETION DATE: 1-22-1971

SCALE: 1" = 100'
100 200 300 400 500 FEET

LOS ANGELES COUNTY FILE NO.

DISTRICT	COUNTY	ROUTE	POST MILES - TOTAL PROJECT	SHEET NO.	TOTAL SHEETS
07	L.A.	605	22.7 - 25.7	3	4

DATE OF RECORD: 12-1-72
C.E. 6723
S. L. ELICKS

LEGEND

⊙	LOS ANGELES COUNTY SURVEY CONTROL POINTS
○	MONUMENTS SET OR FOUND, ALSO B.C.'S AND E.C.'S
⊕	SECTION CORNERS
—	GROUND DISTANCE MEASURED WITH CHAIN IN FEET
—	GROUND DISTANCE MEASURED WITH DISTOMAT IN FEET
—	GROUND DISTANCE MEASURED WITH GEODIMETER IN FEET
A	ADJUSTED GRID DISTANCE IN FEET
—	RECORDED VALUE AS ESTABLISHED PREVIOUSLY

NOTE

- BEARINGS ARE BASED ON THE CALIFORNIA COORDINATE SYSTEM, DIVISION 8, SECTION 8809 OF THE 1953 PUBLIC RESOURCES CODE, AND ARE DERIVED FROM THE 1971 VALUES OF THE LOS ANGELES COUNTY SURVEY CONTROL POINTS AS SHOWN.
- DIVISION OF HIGHWAYS SURVEY INFORMATION IS AVAILABLE FROM THE ENGINEERING SERVICES DEPARTMENT, LOS ANGELES, CALIFORNIA.
- DIVISION OF HIGHWAYS RIGHT OF WAY INFORMATION IS AVAILABLE FROM THE RIGHT OF WAY DEPARTMENT, LOS ANGELES, CALIFORNIA.
- STATIONING SHOWN ON THIS MAP IS FOR REFERENCE ONLY.

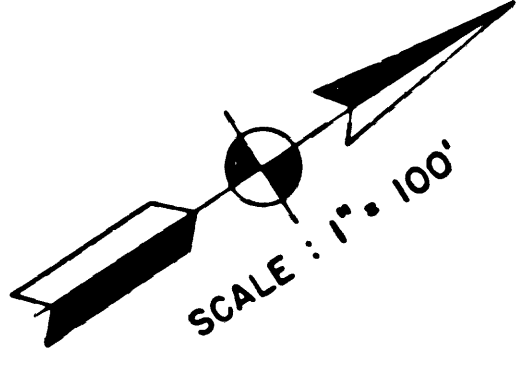
SEE M.F. 4099-2

SEE M.F. 4099-4

F.M. 21280-3

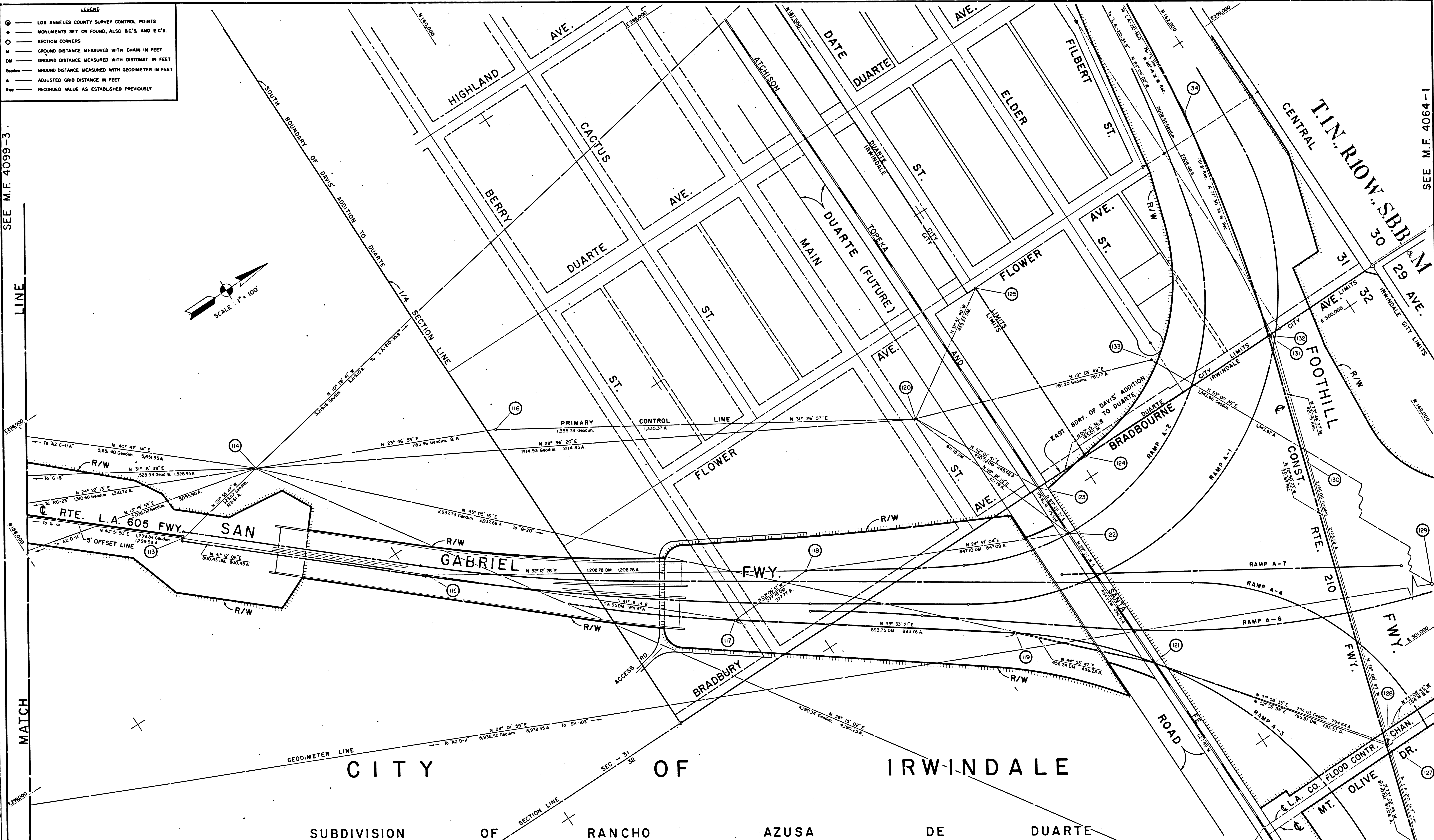
LEGEND

- ⊙ LOS ANGELES COUNTY SURVEY CONTROL POINTS
- MONUMENTS SET OR FOUND, ALSO B.C.'S AND E.C.'S
- ◇ SECTION CORNERS
- GROUND DISTANCE MEASURED WITH CHAIN IN FEET
- GROUND DISTANCE MEASURED WITH DISTOMAT IN FEET
- GROUND DISTANCE MEASURED WITH GEODIMETER IN FEET
- ADJUSTED GRID DISTANCE IN FEET
- RECORDED VALUE AS ESTABLISHED PREVIOUSLY



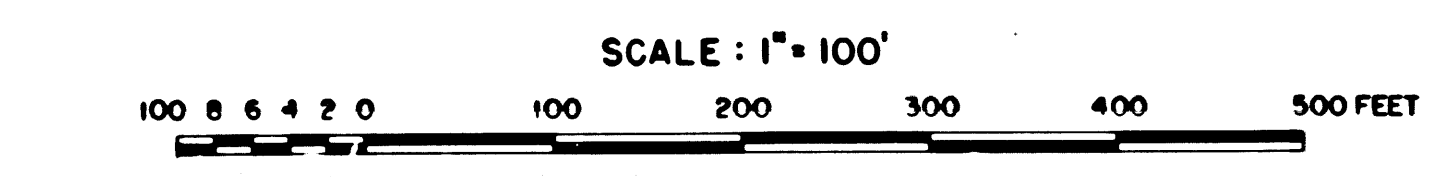
SEE M.F. 4099-3

SEE M.F. 4064-1



CITY OF IRWINDALE
SUBDIVISION OF RANCHO AZUSA DE DUARTE

NO.	NAME	DESCRIPTION	REFERENCE	COORDINATES	NO.	NAME	DESCRIPTION	REFERENCE	COORDINATES
113	6-16	2056+00 FD. CDH. BRASS CAP	FLA 605 G - 0061		120	RG-26	FD. C.H.C. BRASS CAP IN 2" I.P. CONC. MON.	FLA 605 G - 0029 - 0022	
	6-15	SET C.H.C. BR. CAP MON IN 2" I.P. NORMAL TO P.O.T.	FLA 605 G - 0019		121	G-20	(INT. RP A-3 & R.R.) FD. L.B.T. STA. 329+28.36 P.O.C. A-3.	FLA 605 G - 0060	
114	RG-24	FD. CDH. BRASS CAP MON. STAMPED "RG-24"	FLA 605 G - 0059		122	INT. RP A-2 & R.R.	SET L.B.T. IN BR. DK. 329+M.50 P.O.C. A-2.	FLA 605 G - 0022	
	"AZ C-11A"	(L.A. CO. SURV. CONTR. STA. AZUSA C-11A) 1" TO 2" SPK. B.W. IN ROW. 8 2" L.B.T. TIES ON WLY. CB. ARROW HWY.	FLA 605 G - 0193 - 0159 - 0057		123	INT. SEC. LN. BR.	FD. S.S.N. BT. RESET OF R.E. TAG 410.	FLA 605 G - 0029 - 0044 - 0421 - 0043 - 0421	
	"AZ D-11"	(L.A. CO. SURV. CONTR. STA. AZUSA D-11) 1" TO 2" SPK. B.W. IN ROW. 8 2" L.B.T. TIES ON WLY. CB. ARROW HWY.	FLA 605 G - 0057 - 0057 - 0057		124	INT. SEC. LN. BR.	FD. L.A. CO. 2" I.P. IN CONC. W/BR. T.	FLA 210 E - 0043 - 0421 - 0421	
	RG-25	FD. CDH. BRASS CAP MON. STPO RG-25	FLA 605 G - 0057 - 0020		125	INT. CITY LIM. & DATE ST. AT FLOWER AVE.	FD. CO. SURV. MON. DOWN H"	FLA 605 G - 0029	
115	6-17	354+04.2. 42 RT. & A-1 SET. L.B.T. IN BR. DK. OVER BENT	FLA 605 G - 0021		126	INT. F.C. CHAN. & R.R.	FD. 50' SPK. B.W.	FLA 210 E - 0064 - 0048	
116	RG-25	SET "STATE HWY" BRASS CAP IN 2" I.P. CONC. MON.	A 369.001 - 30		127	G-21	(5' WLY. OF INT. F.C. CHAN. & R.T. 210 ON O/S LINE) FD. L.B.T.	FLA 605 G - 0060	
117	6-18	SET L.B.T. & A-3. 315+78.44 E.C.	FLA 605 G - 0021		128	LA-210-367	STA. 343+64.48 E.C. FD. CDH. BRASS CAP MON.	FLA 605 G - 0060	
118	END RP A-2	SET L.B.T. 361.7 315+58.27 A-4 = 337+71.58 END A-2	FLA 605 G - 0021		129	LA-210-365	(INT. BRAD. FC. CHAN. & F.S. LN.) FD. L.B.T. (WLY. OF 2)	FLA 605 G - 0060	
119	6-19	FD. L.B.T. STA. 324+70.21 B.C. A-3	FLA 605 G - 0060		129	SH-103	SET NAIL IN 2" I.P. CONC. MON.	A 369.001 - 31	



NOTE:
 1. BEARINGS ARE BASED ON THE CALIFORNIA COORDINATE SYSTEM DIVISION 6, SECTION 8809 OF THE 1953 PUBLIC RESOURCES CODE, AND ARE DERIVED FROM THE 1971 VALUES OF THE LOS ANGELES COUNTY SURVEY CONTROL POINTS AS SHOWN.
 REFERENCE: C.C.M. 3653.333
 2. DIVISION OF HIGHWAYS SURVEY INFORMATION IS AVAILABLE FROM THE ENGINEERING SERVICES DEPARTMENT, LOS ANGELES, CALIFORNIA.
 3. DIVISION OF HIGHWAYS RIGHT OF WAY INFORMATION IS AVAILABLE FROM THE RIGHT OF WAY DEPARTMENT, LOS ANGELES, CALIFORNIA.
 4. STATIONING SHOWN ON THIS MAP IS FOR REFERENCE ONLY.

IN LOS ANGELES COUNTY
 IN IRWINDALE BETWEEN 0.5 MI. NORTH
 OF LOWER AZUSA ROAD AND RTE. 210
 CONSTRUCTION CONTRACT NO. 07-043824
 COMPLETION DATE: 1-22-1971

LOS ANGELES COUNTY FILE NO. FM.21280-4

STRICT COUNTY ROUTE POST MILES - TOTAL PROJECT	NO. SHEETS	DATE	BY
07 L.A. 605 227-25.7	4		C.E. GOON
STATE OF CALIFORNIA DIVISION OF HIGHWAYS SURVEYS			
Checked by	Designed by		
K. STROPIUS	J.R. KRASZEWSKI		
Project Engineer	Surveyed by		
J.R. KRASZEWSKI	K. STROPIUS		
Survey Office Supervisor	Checked by		
E.L. GREENGARD	F.A. MAAS		
District Survey Engineer	Approved by		
W.F. POND	Deputy District Engineer		
C.E. 6729	Date		
Survey No. 71-146	71-422		
Rev. by			
Date			

FM 21280-4