

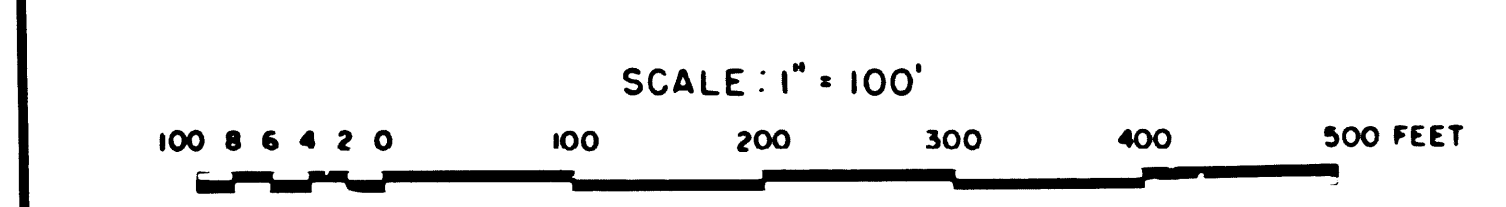
NO.	NAME	DESCRIPTION	REFERENCE	COORDINATES
9	475-2765 W/B RDWY	SET DOM BRASS CAP MON	FLA 210E - 68	
10	PI MON. LN.	FD CHIS X IN W/B RDWY	FLA 210E - 23	
11	475-2765 W/B RDWY	SET DOM BRASS CAP MON	FLA 210E - 68	
12	481-8473 W/B RDWY	SET L&T AT INT. OF MITCHILLINDA & MON LINE	FLA 210E - 68	
13	FH-3	SET TYPE 'B' MON	FLA 210E - 68	
14	148-4712BC COLORADO	FD SPIKE	FLA 210E - 68	
15	151-0829EC COLORADO	FD SPIKE	FLA 210E - 68	
16		INT MITCHILLINDA & COLORADO RESET BT SPIK & W	FLA 210E - 68	
17		PI COLORADO SET BT SPIK & W	FLA 210E - 68	
18		FD 2" IP REPLACED WITH BT SPIK & W	FLA 210E - 122	
19		SET TYPE 'B' MON AT INT.	FLA 210E - 122	
20		SET 50 SPIK W	FLA 210E - 123	
21	19-4977 MITCHILLIN	SET TYPE 'B' MON.	FLA 210E - 122	
22	155-5187EC COLORADO	FD SPIK & W	FLA 210E - 122	
23		FD L&T W/B R.R. TAG AT INT. ALTAURA COLORADO	FLA 210E - 124	
24	INT MONTE VISTA AND COLORADO	FD RAM SET SHANK SET 4" C NAIL TIES	FLA 210E - 125	
25	157-3234BC COLORADO	SET C NAIL IN CURB FL.	FLA 210E - 121	

SEE MF 4140-9

SEE MF 4061-2

NOTE:
 1. BEARINGS ARE BASED ON THE CALIFORNIA COORDINATE SYSTEM, DIVISION 8, SECTION 8809 OF THE 1953 PUBLIC RESOURCES CODE, AND ARE DERIVED FROM THE 1971 VALUE OF THE LOS ANGELES COUNTY SURVEY CONTROL POINTS AS SHOWN. REFERENCE: CCM 43.0
 2. DIVISION OF HIGHWAYS SURVEY INFORMATION IS AVAILABLE FROM THE ENGINEERING SERVICES DEPARTMENT, LOS ANGELES, CALIFORNIA.
 3. DIVISION OF HIGHWAYS RIGHT OF WAY INFORMATION IS AVAILABLE FROM THE RIGHT OF WAY DEPARTMENT, LOS ANGELES, CALIFORNIA.
 4. STATIONING SHOWN ON THIS MAP IS FOR REFERENCE ONLY.

IN LOS ANGELES COUNTY
 IN ARCADIA BETWEEN 0.2 MI. WEST
 OF ROSEMEAD BLVD. AND SANTA ANITA AVE.
 CONSTRUCTION CONTRACT NO. 07-033274
 COMPLETION DATE:



LOS ANGELES COUNTY FILE NO.

DISTRICT	COUNTY	ROUTE	POST MILES - TOTAL PROJECT	SHEET NO.	TOTAL SHEETS	DATE
07	LA	210	29.1 - 32.6	1	4	

STATE OF CALIFORNIA DIVISION OF HIGHWAYS
 MONUMENTATION MAP
 DATUM: CALIFORNIA COORDINATE SYSTEM - ZONE 7
 MAP NO. MF 4061-1

Project Engineer: J.R. KRASZEWSKI
 Survey Office Supervisor: E.L. GREENGARD

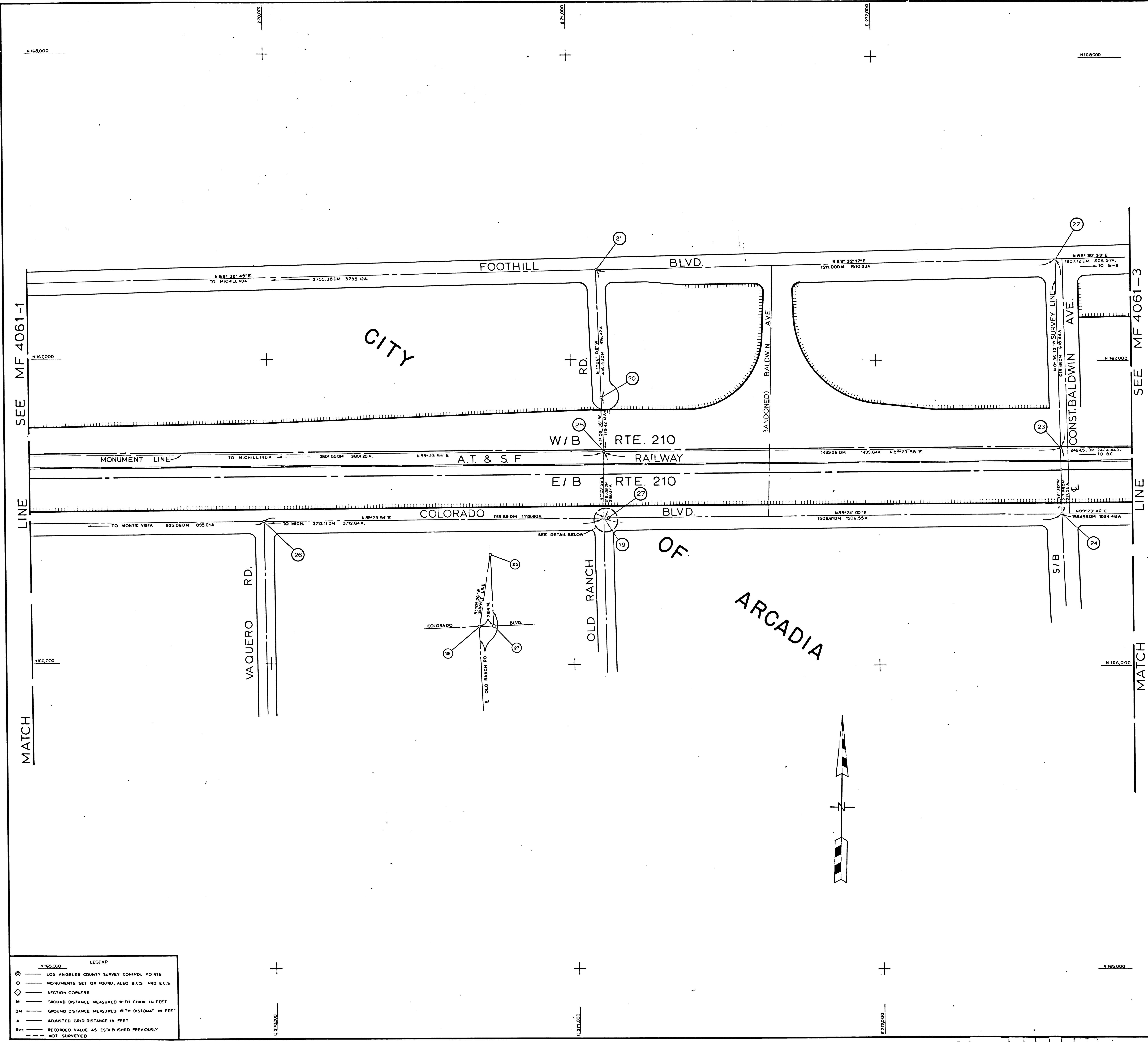
District Survey Engineer: J.P. MAAS
 Date: 6-1-72

LEGEND

- ⊙ LOS ANGELES COUNTY SURVEY CONTROL POINTS
- MONUMENTS SET OR FOUND, ALSO B.C.'S, AND E.C.'S
- ◇ SECTION CORNERS
- GROUND DISTANCE MEASURED WITH CHAIN IN FEET
- DM GROUND DISTANCE MEASURED WITH DISTOMAT IN FEET
- A ADJUSTED GRID DISTANCE IN FEET
- REC RECORDED VALUE AS ESTABLISHED PREVIOUSLY NOT SURVEYED

F.M. 21289-1

FM 21289-1



NO	NAME	DESCRIPTION	REFERENCE	COORDINATES
19		FD L&T AT INT OF SANTA FE COLORADO	FLA 210E-70	
20	14-83-50 SANTA FE	SET TYPE 'B' MON.	FLA 210E-70	
21	FH 4	FD 4 L&T STRADS	GLA 210D-10	
22	FH 5	FD TYPE 'B' MON AT INT OF FOOTHILLS & BALDWIN	GLA 210D-10	
23	99-95 BALDWIN	SET L&T AT INT MON LINE & S/B BALDWIN	FLA 210E-71	
24	71-53-52 COLORADO	SET L&T AT INT OF S/B & COLORADO	FLA 210D-71	
25	519-85-42 W/B RDWY.	SET BR CAP MON 5' 50 OF W/B RDWY.	FLA 210E-70	
26		FD PK. NAIL AT INT OF COLORADO & VAQUERO RD.	FLA 210E-126	N166469.97 E265982.83
27		FD 'C' NAIL AT INT OF OLD RANCH RD. N. & COLORADO		

NOTE

- BEARINGS ARE BASED ON THE CALIFORNIA COORDINATE SYSTEM, DIVISION 8, SECTION 8809 OF THE 1955 PUBLIC RESOURCES CODE, AND ARE DERIVED FROM THE 1971 VALUE OF THE LOS ANGELES COUNTY SURVEY CONTROL POINTS AS SHOWN.
- DIVISION OF HIGHWAYS SURVEY INFORMATION IS AVAILABLE FROM THE ENGINEERING SERVICES DEPARTMENT, LOS ANGELES, CALIFORNIA.
- DIVISION OF HIGHWAYS RIGHT OF WAY INFORMATION IS AVAILABLE FROM THE RIGHT OF WAY DEPARTMENT, LOS ANGELES, CALIFORNIA.
- STATIONING SHOWN ON THIS MAP IS FOR REFERENCE ONLY.

IN LOS ANGELES COUNTY

CONSTRUCTION CONTRACT NO.
COMPLETION DATE:

SCALE: 1" = 100'
100 200 300 400 500 FEET

LOS ANGELES COUNTY FILE NO.

DISTRICT	COUNTY	ROUTE	POST MILES - TOTAL PROJECT	SHEET NO.	TOTAL SHEETS
07	LA	210	227-257	2	4

STATE OF CALIFORNIA DIVISION OF HIGHWAYS
SURVEYS
MONUMENTATION MAP
DATUM: CALIFORNIA COORDINATE SYSTEM - ZONE 7
MAP NO. MF 4061-2

Project Engineer: J. KRASZEWSKI
Checked by: L. PRICE
Survey Office Supervisor: E. GREENGARD

F.A. MAAS
C.S. 3819
District Survey Engineer
Date: 4-24-78

LEGEND

⊙	LOS ANGELES COUNTY SURVEY CONTROL POINTS
○	MONUMENTS SET OR FOUND, ALSO B.C.S. AND E.C.S.
◇	SECTION CORNERS
—	GROUND DISTANCE MEASURED WITH CHAIN IN FEET
—	GROUND DISTANCE MEASURED WITH DISTOMAT IN FEET
—	ADJUSTED GRID DISTANCE IN FEET
—	RECORDED VALUE AS ESTABLISHED PREVIOUSLY
---	NOT SURVEYED

F.M. 21289-2

F.M. 21289-2

NO	NAME	DESCRIPTION	REFERENCE	COORDINATES
25	M G E	FD CO. SURVEY MON	FLA 210E - 74	
26	559-0580 BC-COLORADO	SET DOH BR CAP MON 5' SO W/B ROW	FLA 210E - 73	
27	M P C	SET DOH BR CAP MON 5' SO W/B ROW	FLA 210E - 73	
28	567-541EC	SET BRASS CAP MON 5' SO W/B E C	FLA 210E - 73	
29	68-5500BC COLORADO	FD. TYPE 'B' MON B C COLORADO	FLA 210E - 73	
30	PT BETTY	SET L&T IN TOP OF CURB	FLA 210E - 73	
31	R 1 COLORADO	FD TYPE 'B' SURVEY MON	FLA 210E - 73	

NOTE

- BEARINGS ARE BASED ON THE CALIFORNIA COORDINATE SYSTEM, DIVISION 8, SECTION 8009 OF THE 1953 PUBLIC RESOURCES CODE, AND ARE DERIVED FROM THE 1971 VALUE OF THE LOS ANGELES COUNTY SURVEY CONTROL POINTS AS SHOWN.
- DIVISION OF HIGHWAYS SURVEY INFORMATION IS AVAILABLE FROM THE ENGINEERING SERVICES DEPARTMENT, LOS ANGELES, CALIFORNIA.
- DIVISION OF HIGHWAYS RIGHT OF WAY INFORMATION IS AVAILABLE FROM THE RIGHT OF WAY DEPARTMENT, LOS ANGELES, CALIFORNIA.
- STATIONING SHOWN ON THIS MAP IS FOR REFERENCE ONLY.

IN LOS ANGELES COUNTY

CONSTRUCTION CONTRACT NO.
COMPLETION DATE:

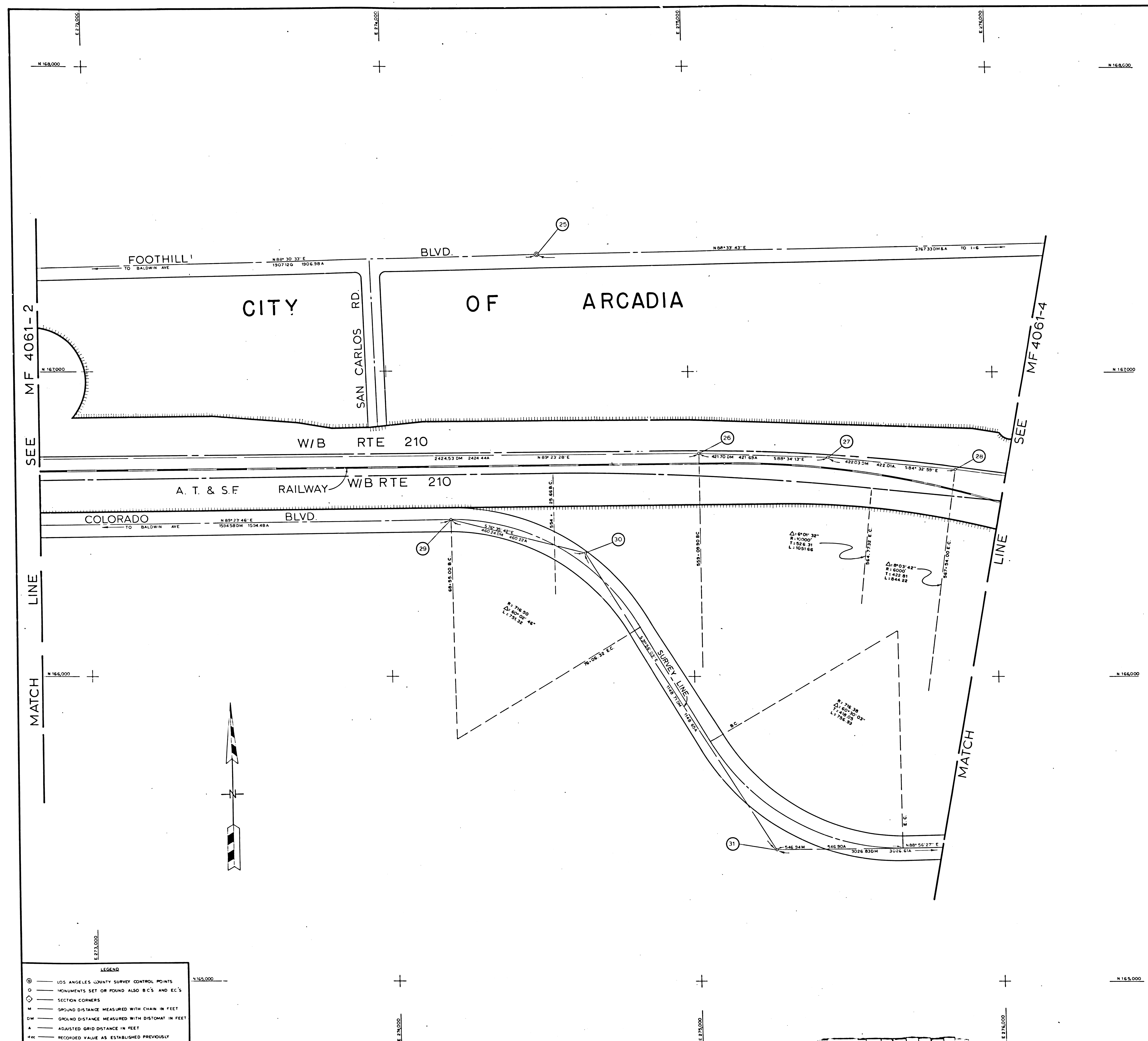
SCALE: 1" = 100'
100 200 300 400 500 FEET

LOS ANGELES COUNTY FILE NO.

DISTRICT	COUNTY	ROUTE	POST MILES - TOTAL PROJECT	SHEET NO.	TOTAL SHEETS	DATE OF PARTY
07	LA	210	227.257	3	4	C C CAMP

STATE OF CALIFORNIA	DIVISION OF HIGHWAYS	Surveyor	Checked by
MONUMENTATION MAP	SURVEYS	L. PRICE	J. KRASZEWSKI
DATUM: CALIFORNIA COORDINATE SYSTEM - ZONE 7		Project Engineer	Drawn by
MAP NO. MF 4061-3		J. KRASZEWSKI	L. PRICE
		Survey Office Supervisor	E. GREENHARD

F.A. MAAS
C.S. 3075
District Survey Engineer

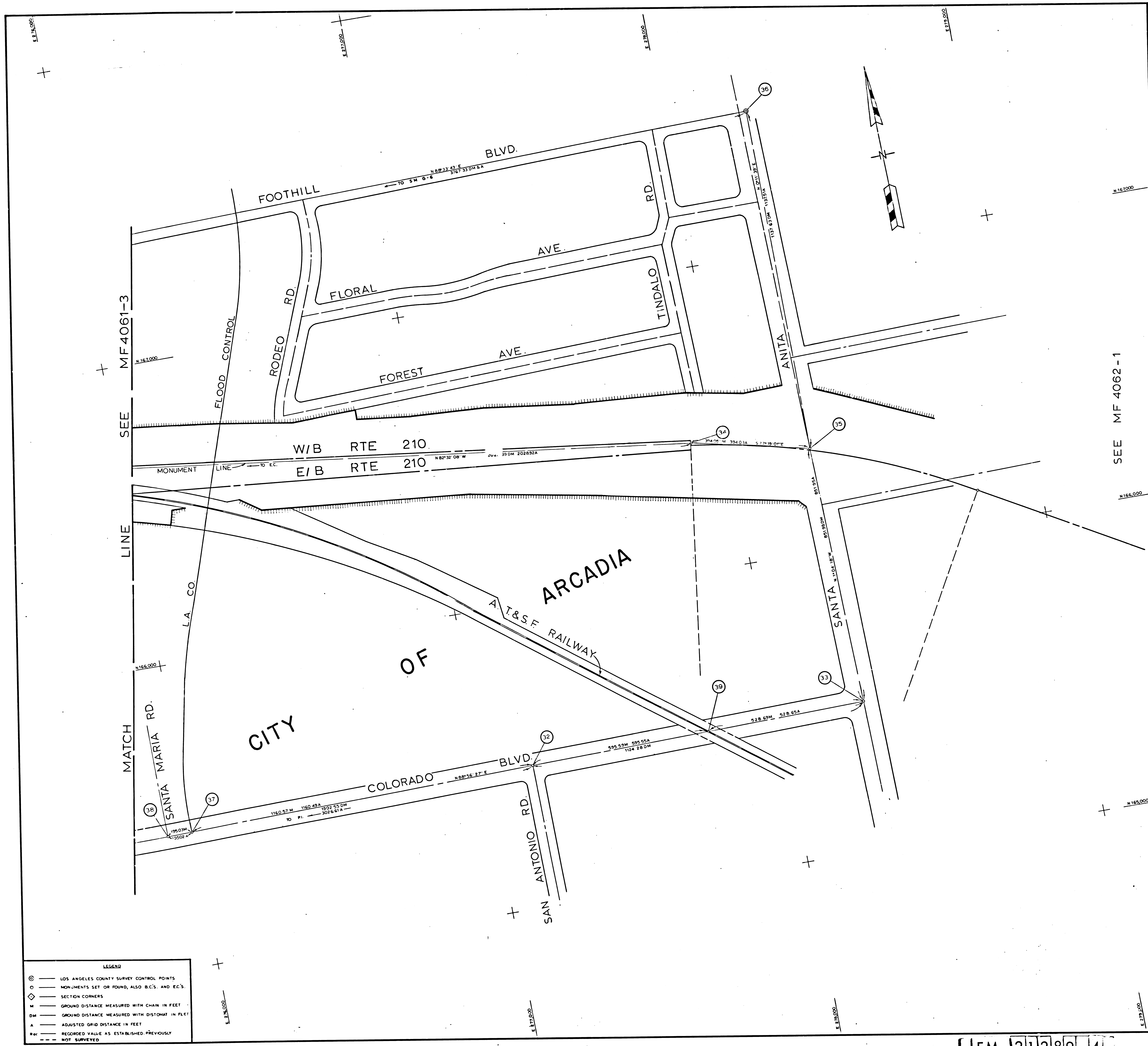


LEGEND

- ⊙ LOS ANGELES COUNTY SURVEY CONTROL POINTS
- MONUMENTS SET OR FOUND ALSO B.C.'S AND E.C.'S
- ◇ SECTION CORNERS
- M GROUND DISTANCE MEASURED WITH CHAIN IN FEET
- DM GROUND DISTANCE MEASURED WITH DISTOMAT IN FEET
- A ADJUSTED GRID DISTANCE IN FEET
- RECORDED VALUE AS ESTABLISHED PREVIOUSLY
- - - NOT SURVEYED

F.M. 21289-3

F.M. 21289-3

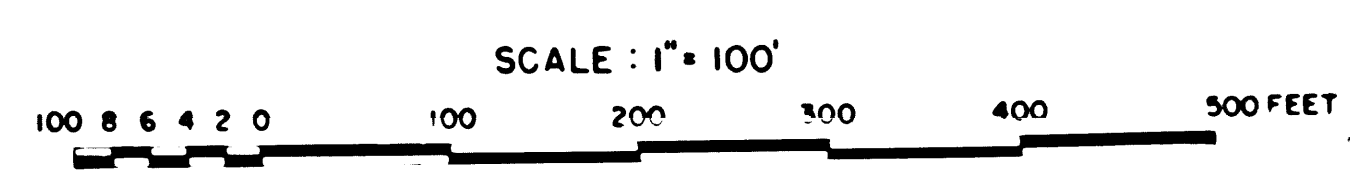


NO.	NAME	DESCRIPTION	REFERENCE	COORDINATES
32		FD ST & W ON LINE	FLA 210E - 73	
33		FD BT SPK AT INT OF COLORADO & SANTA ANITA	FLA 210E - 74	
34	087-83.74 BC W/B	SET BR CAP MON ON LINE	FLA 210E - 74	
35	SANTA ANITA	SET L & T ON LINE INT OF SANTA ANITA & MON LINE	FLA 210E - 73	
36	SM 1-6	FD CO SURVEY MON AT INT OF FOOTHILL & SANTA ANITA	FLA 210E - 74	
37		FD L T IN P.C.C. AT INT OF COLORADO & ARCADIA WASH	FLA 210E - 140	
38		FD P.K. NAIL AT INT OF COLORADO - SANTA MARIA RD	FLA 210E - 140	
39		FD 1&2 T. AT INT OF COLORADO & RAILROAD	FLA 210E - 141	

NOTE:
 1. BEARINGS ARE BASED ON THE CALIFORNIA COORDINATE SYSTEM, DIVISION 8, SECTION 8809 OF THE 1983 PUBLIC RESOURCES CODE, AND ARE DERIVED FROM THE 1971 VALUE OF THE LOS ANGELES COUNTY SURVEY CONTROL POINTS AS SHOWN.
 REFERENCE C.C.M. 43.0
 2. DIVISION OF HIGHWAYS SURVEY INFORMATION IS AVAILABLE FROM THE ENGINEERING SERVICES DEPARTMENT, LOS ANGELES, CALIFORNIA.
 3. DIVISION OF HIGHWAYS RIGHT OF WAY INFORMATION IS AVAILABLE FROM THE RIGHT OF WAY DEPARTMENT, LOS ANGELES, CALIFORNIA.
 4. STATIONING SHOWN ON THIS MAP IS FOR REFERENCE ONLY.

IN LOS ANGELES COUNTY

CONSTRUCTION CONTRACT NO.
 COMPLETION DATE:



LOS ANGELES COUNTY FILE NO.

DISTRICT	COUNTY	ROUTE	POST MILES - TOTAL PROJECT	SHEET NO.	TOTAL SHEETS
07	LA	210	22.5 / 22.7	4	4

STATE OF CALIFORNIA
 DIVISION OF HIGHWAYS
 SURVEYS
 MONUMENTATION MAP
 DATUM CALIFORNIA COORDINATE SYSTEM - ZONE 7
 MAP NO. MF 4061-4

DATE: 4-27-72
 DISTRICT SURVEY ENGINEER

Surveyed by: J. KRASZEWSKI
 Checked by: L. PRICE
 Drawn by: J. KRASZEWSKI
 Survey Office Supervisor: E. GREENGARD

- LEGEND
- ⊙ — LOS ANGELES COUNTY SURVEY CONTROL POINTS
 - — MONUMENTS SET OR FOUND, ALSO B.C.'S. AND E.C.'S.
 - ◇ — SECTION CORNERS
 - — GROUND DISTANCE MEASURED WITH CHAIN IN FEET
 - — GROUND DISTANCE MEASURED WITH DISTOMAT IN FEET
 - A — ADJUSTED GRID DISTANCE IN FEET
 - REC — RECORDED VALUE AS ESTABLISHED PREVIOUSLY
 - — NOT SURVEYED

F.M. 21289-4

F.M. 21289-4