

TRACT NO. 10063

LOT 1

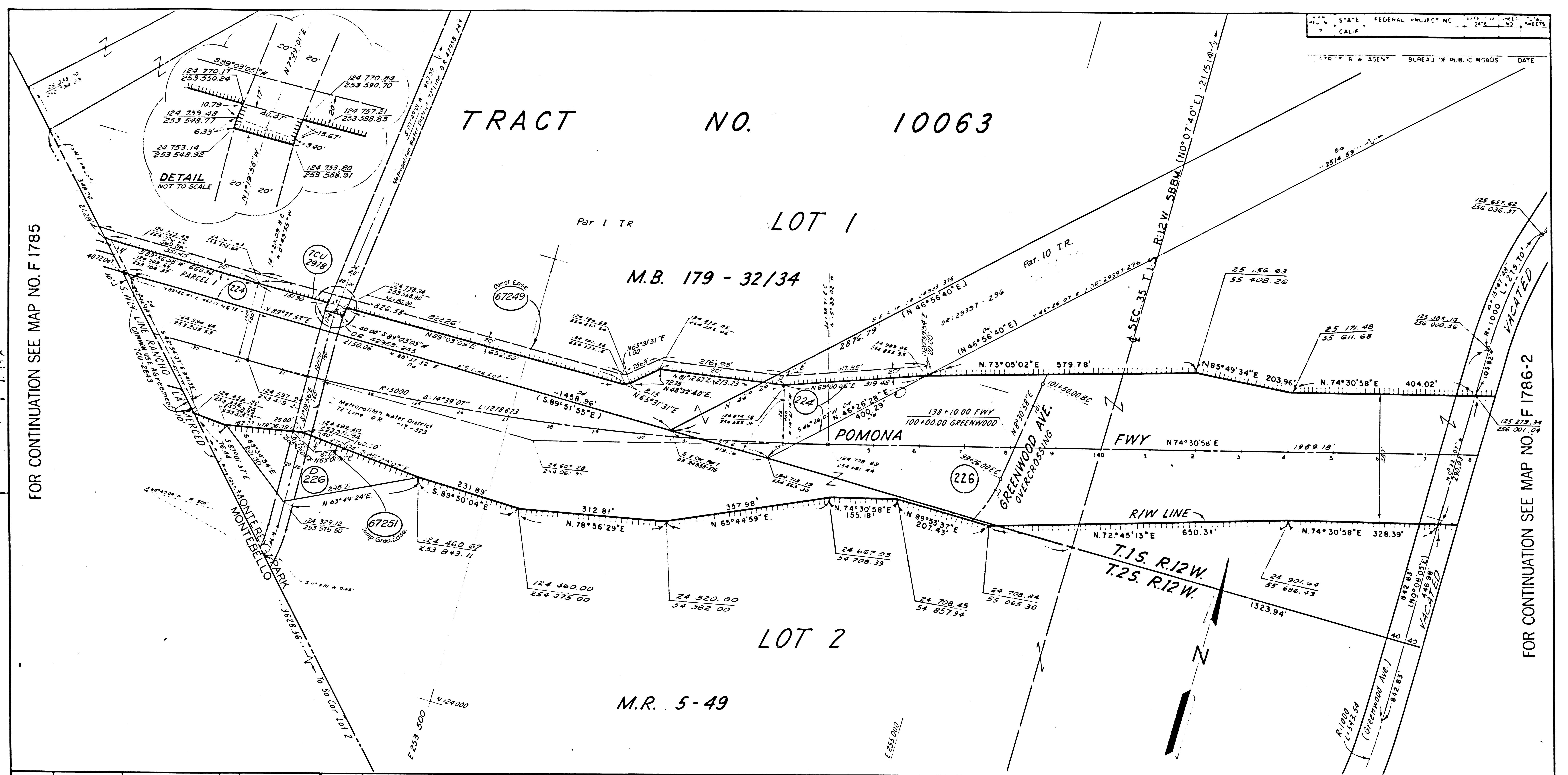
M.B. 179 - 32/34

LOT 2

M.R. 5-49

FOR CONTINUATION SEE MAP NO. F 1785

FOR CONTINUATION SEE MAP NO. F 1786-2



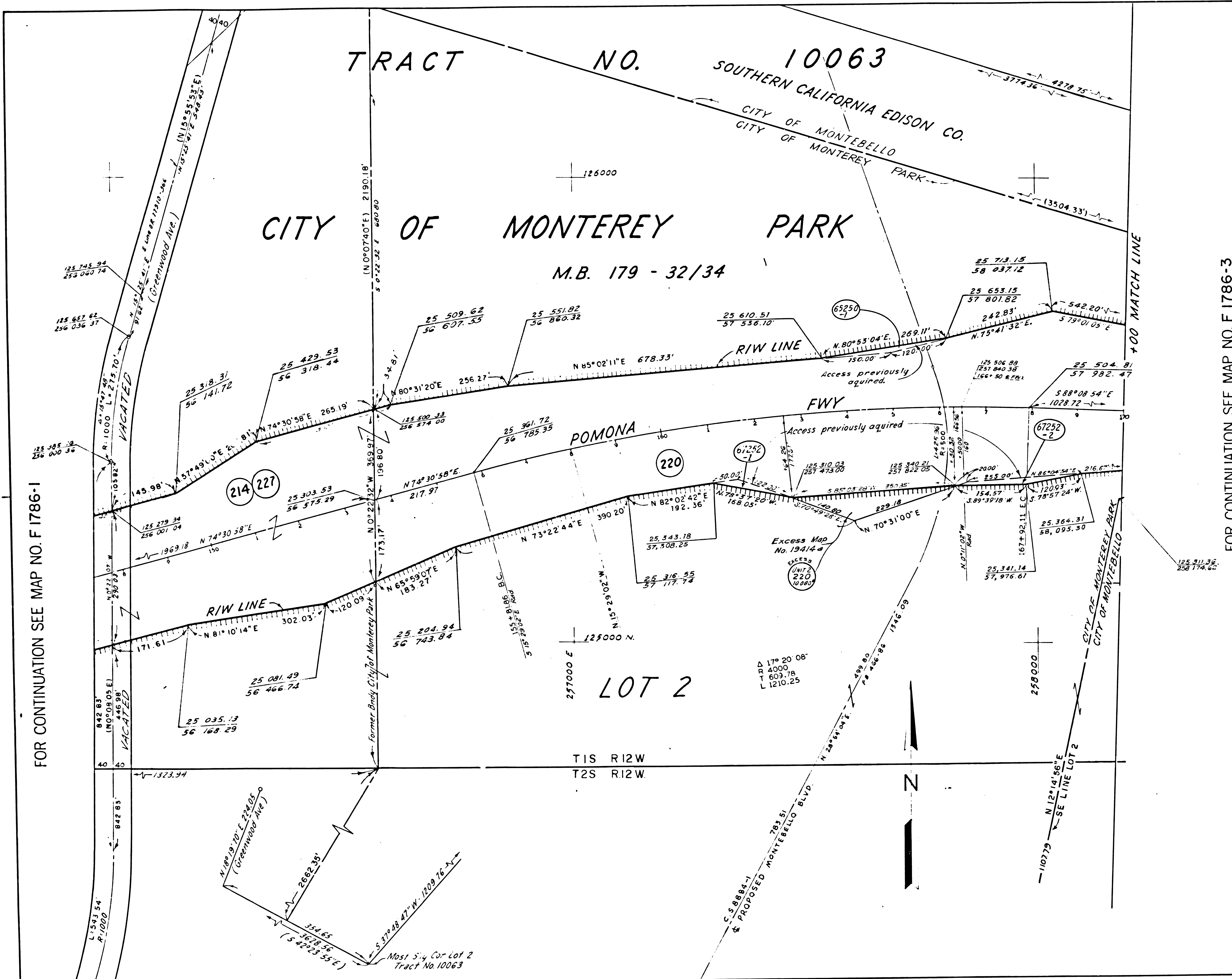
PARCEL NO.	GRANTOR OR GRANTEE	AREA *			INST.	RECORDING DATA		PARCEL NO.	GRANTOR OR GRANTEE	AREA *			INST.	RECORDING DATA		PARCEL NO.	GRANTOR OR GRANTEE	AREA *			INST.	RECORDING DATA		ISSUE DATE
		ACQ.	EXCESS	TOTAL		DATE	O.R.			ACQ.	EXCESS	TOTAL		DATE	O.R.			ACQ.	EXCESS	TOTAL		DATE	O.R.	
224	S.C. EDISON				FEE	2-6-67	D3530-934																WB. 12/71	
226	MONTEREY DISP				FEE	9-22-68	D203-282																	
D-226	MONTEREY DISP				D.D.	5-26-67	D3634-670																	
67251	OPERATING INDS.	0.0464	TEMP																					
67249			See F-1785																					

STATE OF CALIFORNIA
 TRANSPORTATION AGENCY
 DEPARTMENT OF PUBLIC WORKS
 DIVISION OF HIGHWAYS
 (OLD 7-LA-172-MonP, A, B)
R/W MAP
 NO. F 1786-1
 07-LA-60 PM 6.8
 DATE 8-31-70
 RWPE. SR.

LEGEND: [Symbol] ACCESS DENIED [Symbol] EXCLUDES STREET AREA
 * AREA IN SQUARE FEET UNLESS OTHERWISE NOTED
 () PREVIOUS RECORD DATA ▲ INCLUDES EASEMENT AREA

F.M. 21290-1

F.M. 21290-1



FOR CONTINUATION SEE MAP NO. F 1786-3

PARCEL NO.	GRANTOR OR GRANTEE	AREA *			INST.	RECORDING DATA	
		ACO	EXCESS	TOTAL		DATE	OR
214 & 227	WHEELER				FEE	12-20-57	36291-73
220	MONTEREY DISP	10,080			FEE	9-2-58	D203-268
67250-1	Operating Inds	1,481		106.4	FEE		
67250-2	"	4,128			FEE		
67252-1	"	1,391		24.75	FEE		
67252-2	"	2,419			FEE		
67252-3	"	1,089	Temp. Grad. Case		CASE	See	F 1786-3

ISSUE DATE: 12-1-71

STATE OF CALIFORNIA
 TRANSPORTATION AGENCY
 DEPARTMENT OF PUBLIC WORKS
 DIVISION OF HIGHWAYS
 (OLD 7-LA-172-MonP, A, B)

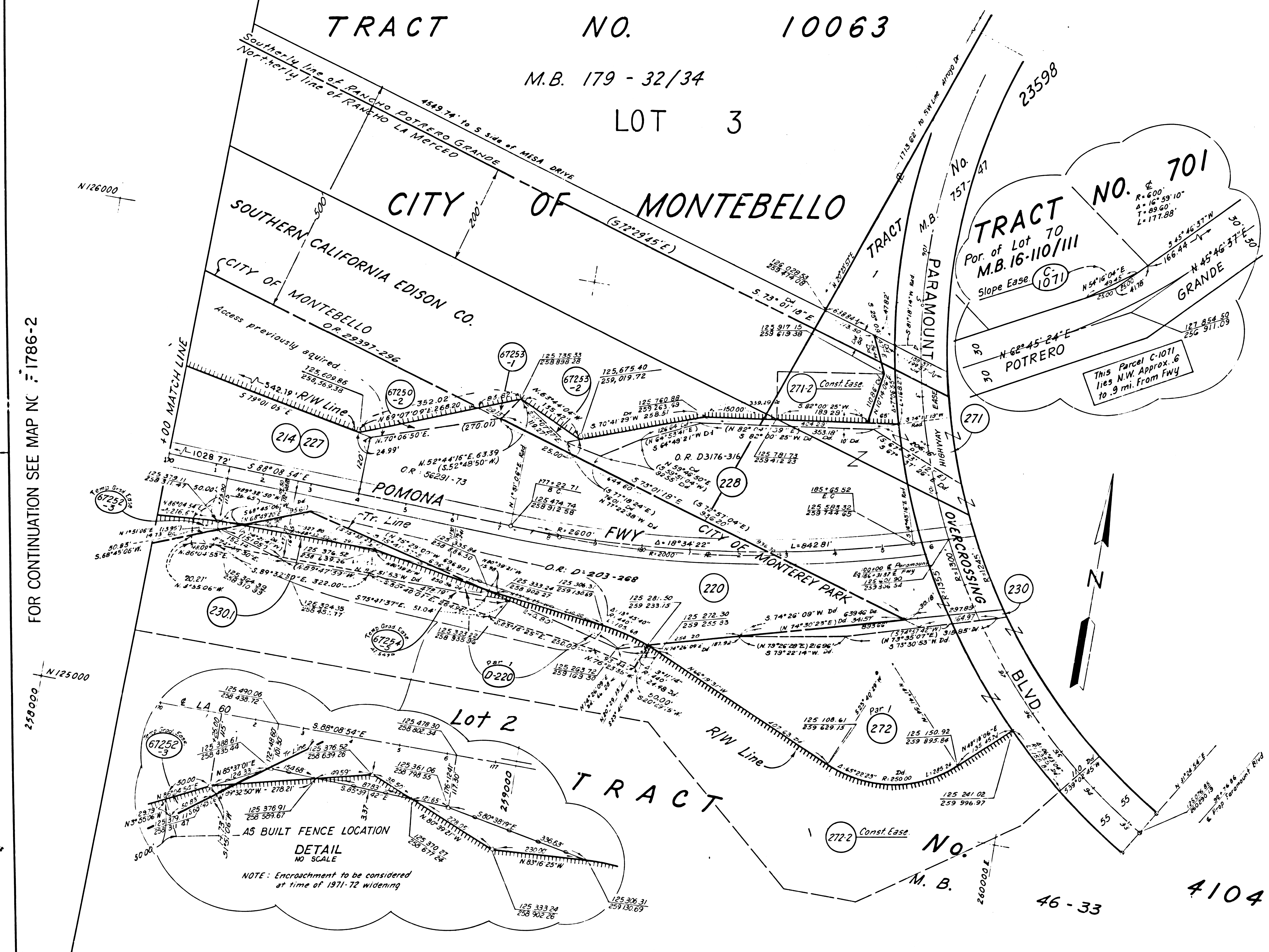
R/W MAP
 NO. F 1786-2
 07-LA-60 PM 7.2
 DATE 8-31-70
 R.W.P.E. SR.

LEGEND:
 [Symbol] ACCESS DENIED [Symbol] EXCLUDES STREET AREA
 [Symbol] AREA IN SQUARE FEET UNLESS OTHERWISE NOTED
 [Symbol] PREVIOUS RECORD DATA [Symbol] INCLUDES EASEMENT AREA

FOR CONTINUATION SEE MAP NO. F 1786-1

F.M. 21290-2

F.M. 21290-2



FOR CONTINUATION SEE MAP NO. F 1786-2

FOR CONTINUATION SEE MAP NO. F 1786-4

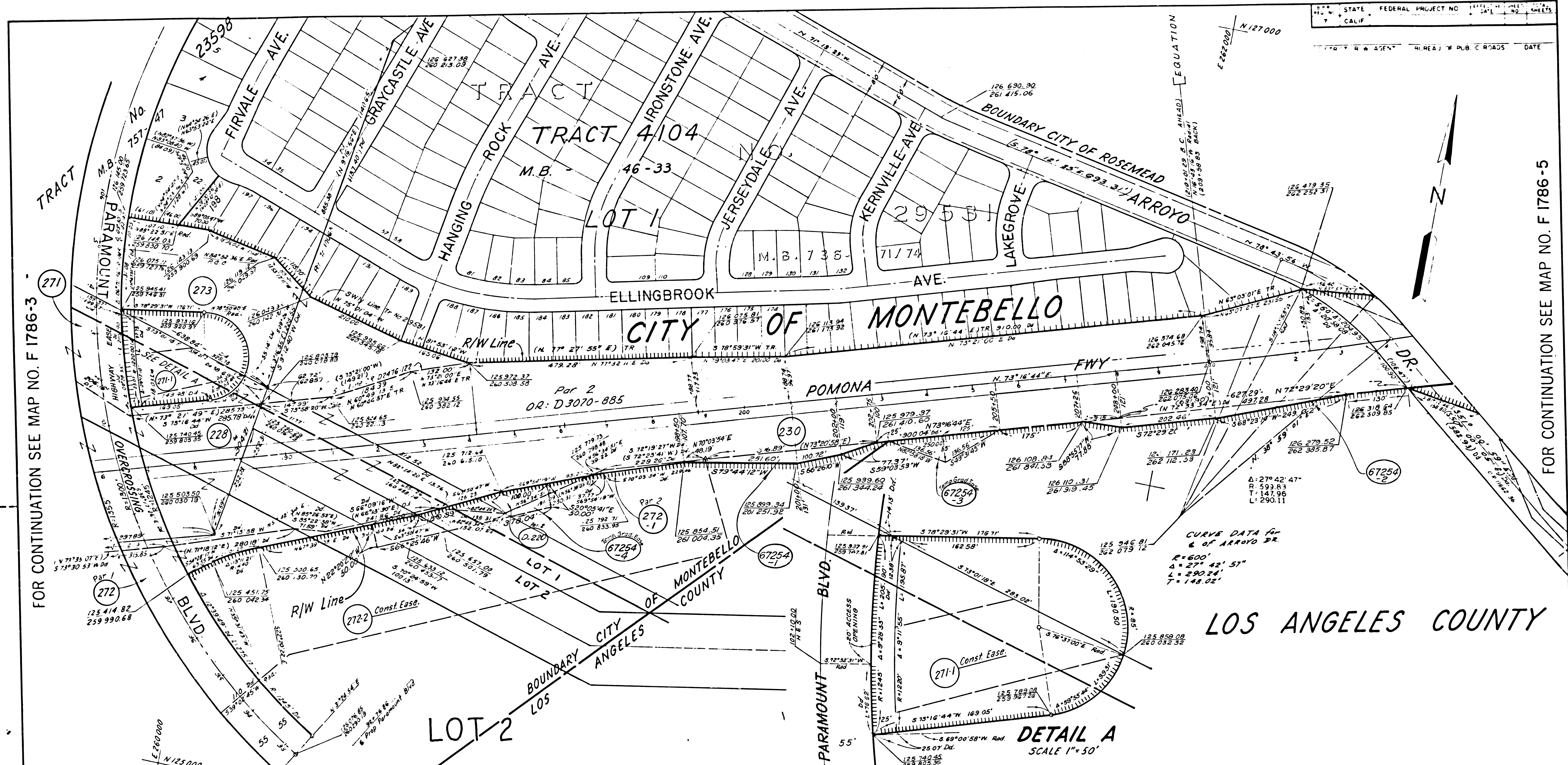
PARCEL NO.	GRANTOR OR GRANTEE	AREA *		INST.	RECORDING DATA	
		ACO	EXCESS TOTAL		DATE	OR
214-227	WHEELER			FEE	122057	56291-73
220	MONTEREY DISP.			FEE	9258	D203-268
D-220	STANDARD OIL			D.D.	122767	D3868-619
228	S.C. EDISON		Hwy. Eas.	EASE	11466	D3176-316
230	STANDARD OIL			FEE	10565	D3070-885
230-1	"			"	"	"
271	S.C. EDISON			EASE	11466	D3480-20
272 PAR	STANDARD OIL			FEE	91867	D3769-926
C1071	MAI			EASE	31163	D1948-134
271-2	S.C. EDISON			EASE		
272-2	STANDARD OIL			EASE		
67250-2	OPERATING IND	See F 1786-2		FEE		
67253-1	S.C. EDISON	749	Hwy. Eas.	EASE		
67253-2	S.C. EDISON	1,209	"	EASE		
67252-3	OPERATING IND	1,089	See F 1786-2	EASE		
67254-5	STANDARD OIL			EASE		

ISSUE DATE	STATE OF CALIFORNIA
AP 22 72	TRANSPORTATION DEPARTMENT OF
	AGENCY PUBLIC WORKS
	DIVISION OF HIGHWAYS
	(OLD 7-LA-172-Mon P, A, B)
	R/W MAP
	NO. F 1786-3
	07-LA-60 PM 7.5
	DATE 8-31-70
	RWPE SR

LEGEND: ACCESS DENIED EXCLUDES STREET AREA
 AREA IN SQUARE FEET UNLESS OTHERWISE NOTED
 PREVIOUS RECORD DATA INCLUDES EASEMENT AREA

F.M. 21290-3

F.M. 21290-3



FOR CONTINUATION SEE MAP NO. F 1786-3

FOR CONTINUATION SEE MAP NO. F 1786-5

LOS ANGELES COUNTY

DETAIL A
SCALE 1"=50'

PARCEL NO	GRANTOR OR GRANTEE	AREA *			INST	RECORDING DATA		PARCEL NO	GRANTOR OR GRANTEE	AREA *			INST	RECORDING DATA		PARCEL NO	GRANTOR OR GRANTEE	AREA *			INST	RECORDING DATA		ISSUE DATE
		ACO	EXCESS	TOTAL		DATE	O.R.			ACO	EXCESS	TOTAL		DATE	O.R.			ACO	EXCESS	TOTAL		DATE	O.R.	
D-220 PAR	STANDARD OIL				D.D.	1/27/67	D3868-619	67254-1	Standard Oil Co. of Calif.	7,353			Fee											
228	S.C. EDISON				FEE	1/14/66	D3176-316	67254-2	"	8,126			Fee											
230	STANDARD OIL				FEE	10/5/65	D3070-885	67254-3	"	6,875			Temp. Easement											
271	S.C. EDISON				EASE	1/14/66	D3480-20	67254-4	"	19,480			Temp. Easement											
272 PAR	STANDARD OIL				FEE	9/18/67	D3769-926		"															
272-1 PAR	"				"	"	"		"															
273	WATT, INC.				FEE	7/21/67	D3709-795		"															
271-1	S.C. EDISON				EASE				"															
272-2	STANDARD OIL				EASE				"															

STATE OF CALIFORNIA
 TRANSPORTATION DEPARTMENT OF
 AGENCY PUBLIC WORKS
 DIVISION OF HIGHWAYS
 (OLD 7-LA-172-MonP, A, B)
R/W MAP
 NO. F 1786-4
 07-LA-60 PM 8.0
 DATE 4-31-70
 R.W.P.E. SR

LEGEND: ACCESS DENIED EXCLUDES STREET AREA
 AREA IN SQUARE FEET UNLESS OTHERWISE NOTED
 PREVIOUS RECORD DATA INCLUDES EASEMENT AREA

F.M. 21290-4

F.M. 21290-4

PARCEL NO.	GRANTOR OR GRANTEE	AREA *		INST.	RECORDING DATA	
		ACO	EXCESS/TOTAL		DATE	O R
237 PAR 1/2	SPANGLER			FEE	8-27-63	D2159-979
D-237	MONTEREY DISP.			D.D.	7-7-66	D3359-66
D-237.1	MONTEREY DISP.			D.D.	4-2-68	D3958-595
238 PAR 1/2	ARMSTRONG			FEE	10-10-57	53814-373
D-238	CANZONERI			D.D.	7-7-67	D3696-285
239 PAR 1/2	HARRIS			FEE	1-7-58	56359-174
D-239	S.C. EDISON			D.D.	9-19-69	D4502-359
240 PAR 1	CANZONERI			COND	6-6-66	D3327-270
241	WOXLAND			FEE	7-11-62	D1680-315
D-241	BARILLARO			D.D.	11-15-67	D3830-860
D-241.1	SELF			D.D.	7-31-69	D4452-763
D-239.1	St. to City of Rosemead			D.D.	7-24-70	D4182-571
R-608 PAR	ROSEMEAD			REL	3-30-70	3392-338
67177-1	OPERATING IND	1946	5.207A			
67177-2	"	3168				
67200	SIN GAS 625PEL	601	2.145A			

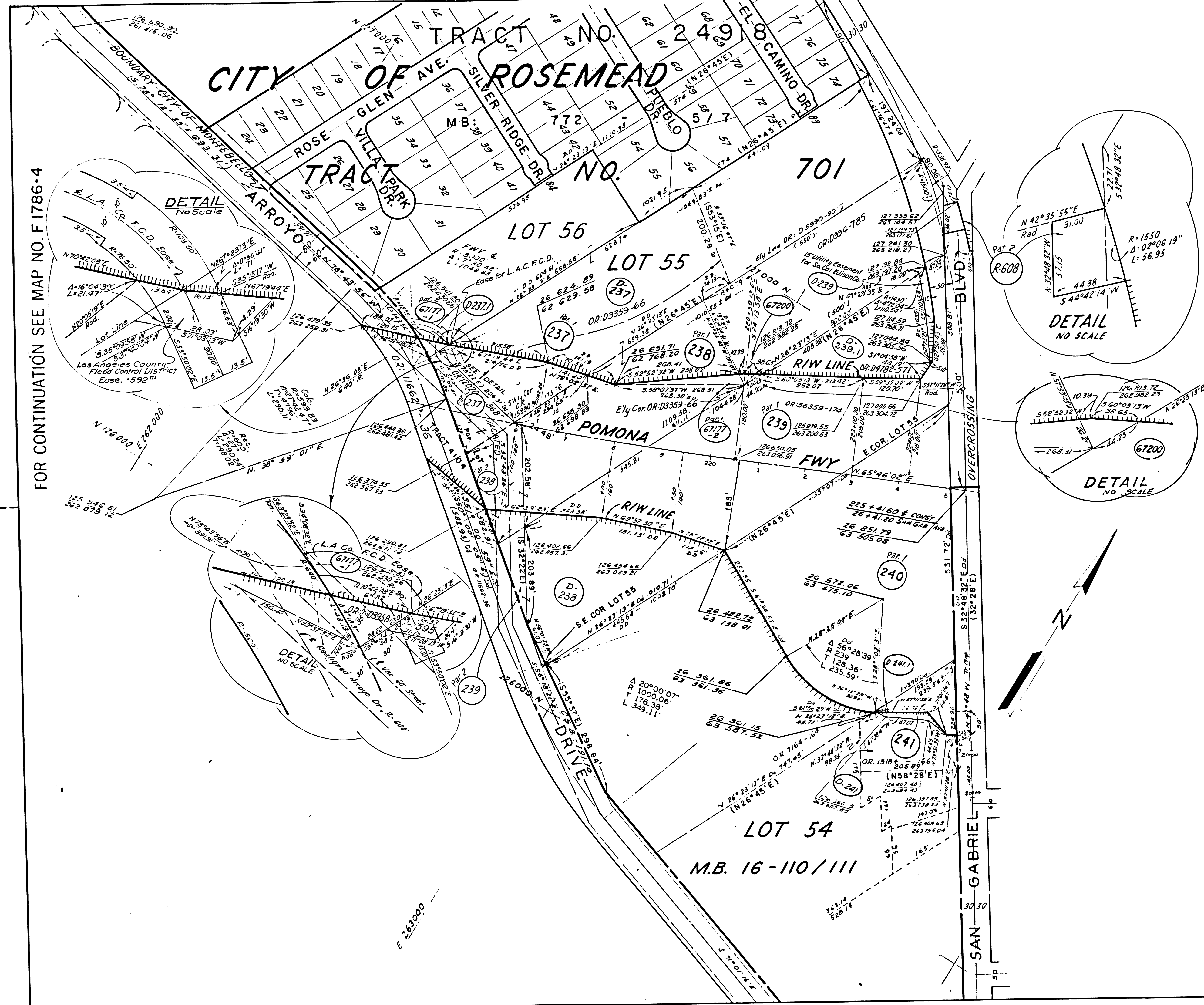
FOR CONTINUATION SEE MAP NO. F 1786-6

ISSUE DATE	STATE OF CALIFORNIA TRANSPORTATION DEPARTMENT OF AGENCY PUBLIC WORKS DIVISION OF HIGHWAYS
	R/W MAP NO. F 1786-5 07-LA-60 (OLD 172) (MON, P, A, B) PM 8.4 DATE 8-31-70 R.W.P.E. NELSON SR. WEATHERHOLT

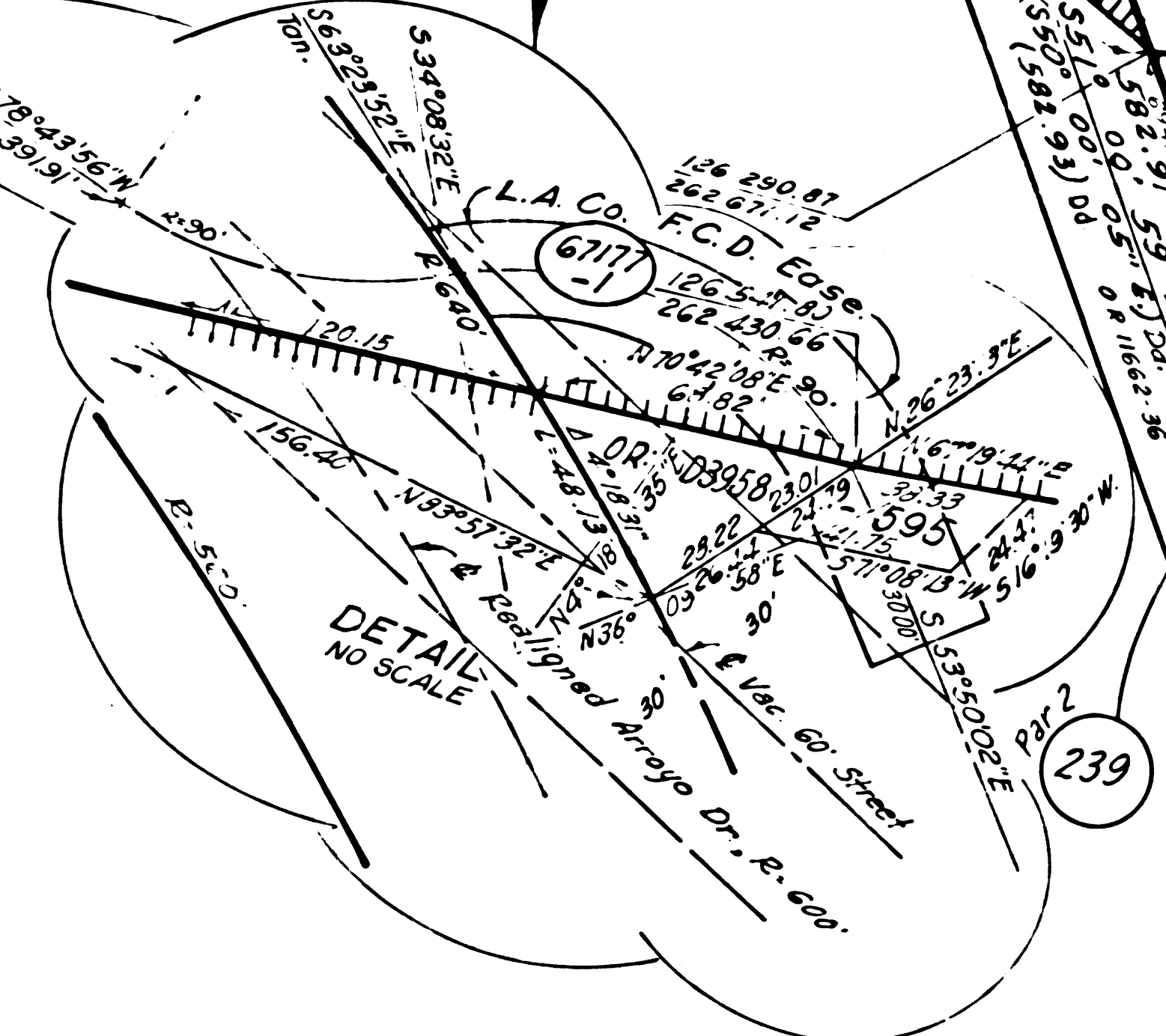
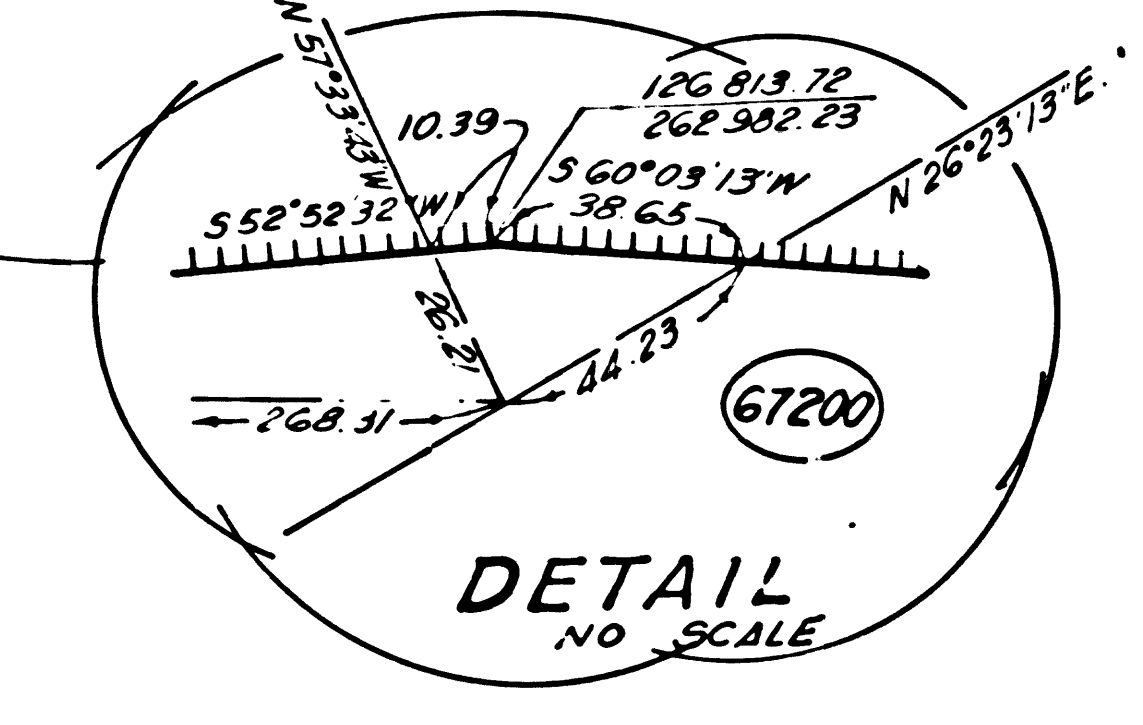
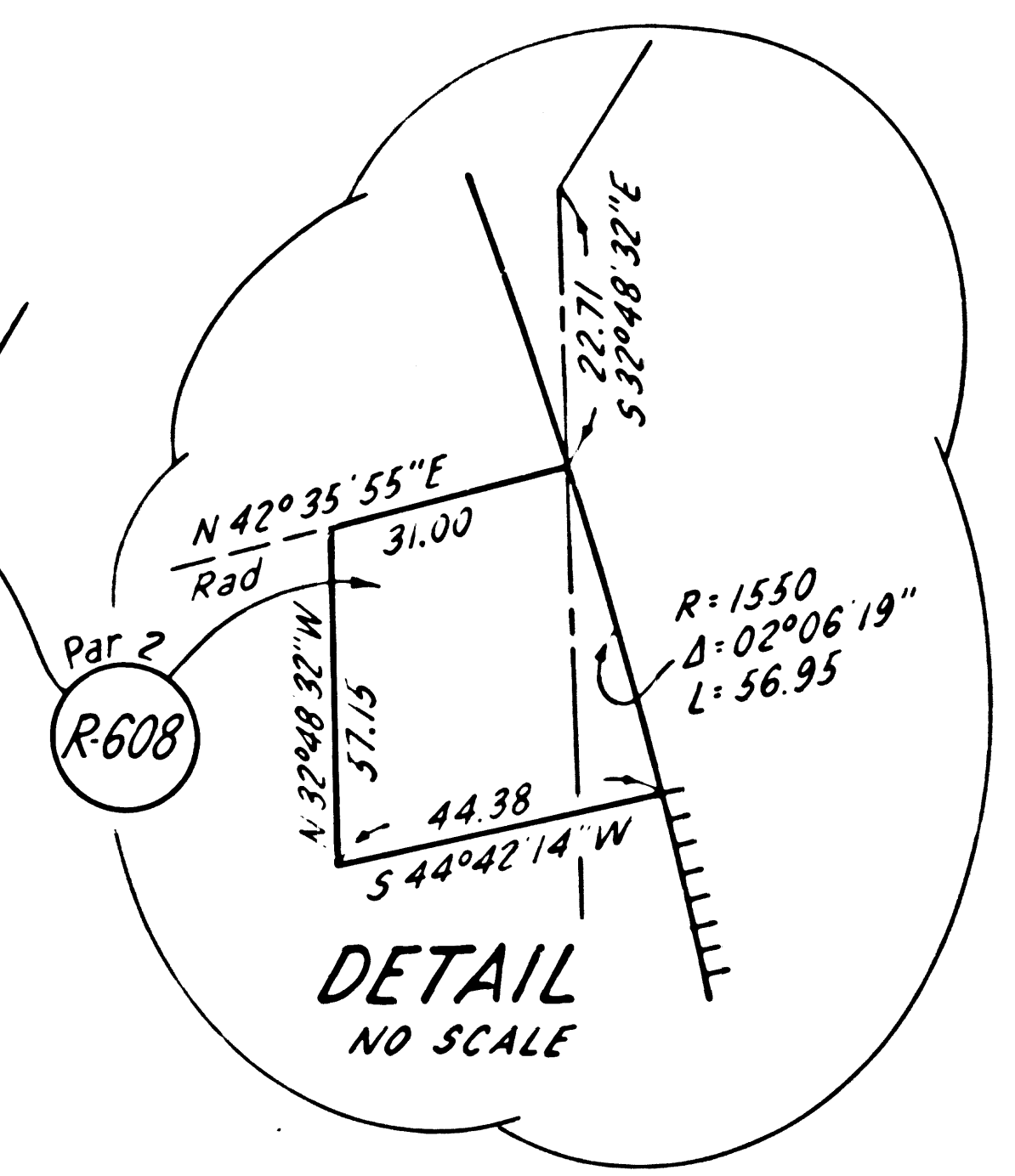
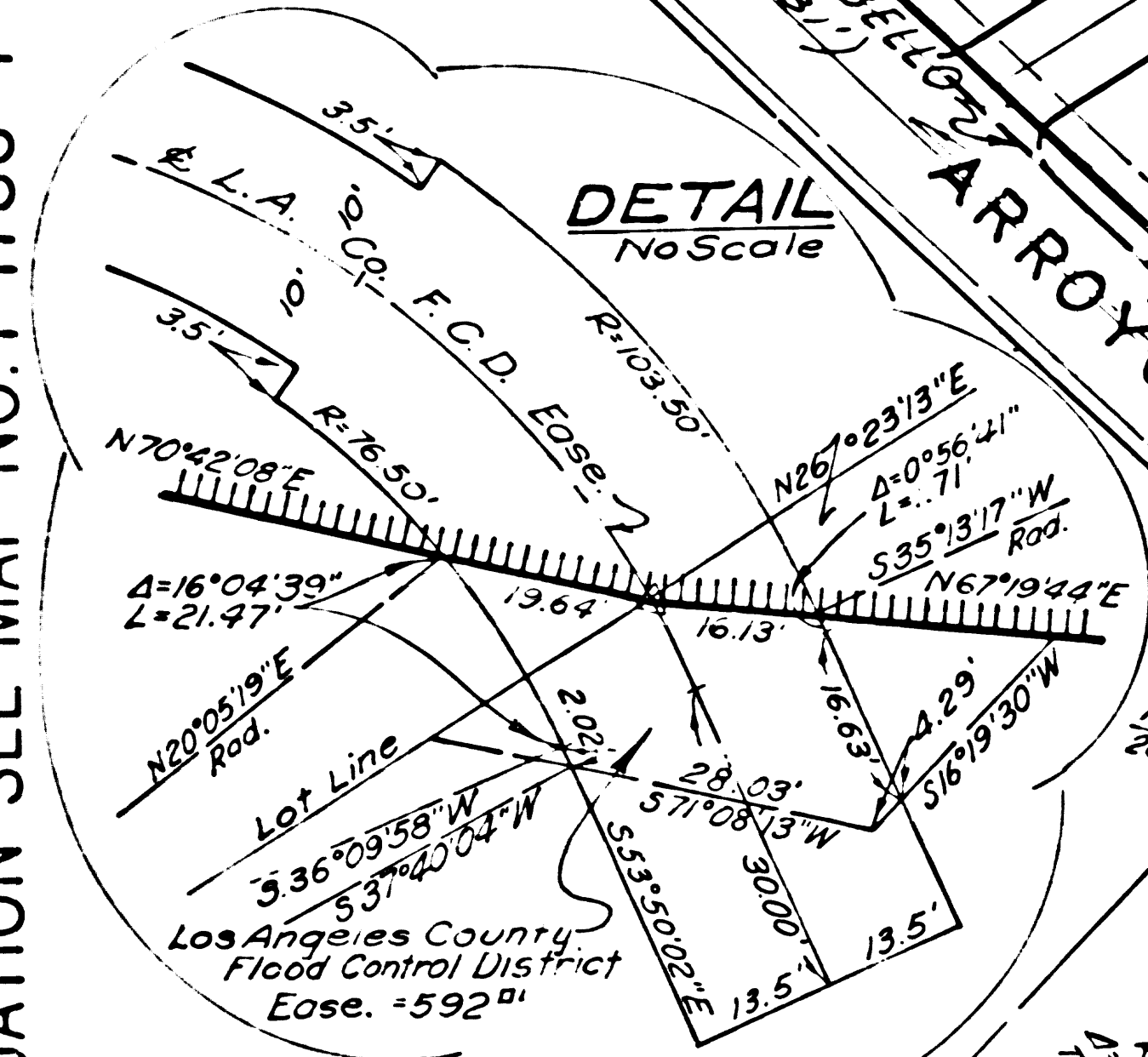
LEGEND: ACCESS DENIED EXCLUDES STREET AREA
 AREA IN SQUARE FEET UNLESS OTHERWISE NOTED
 PREVIOUS RECORD DATA INCLUDES EASEMENT AREA

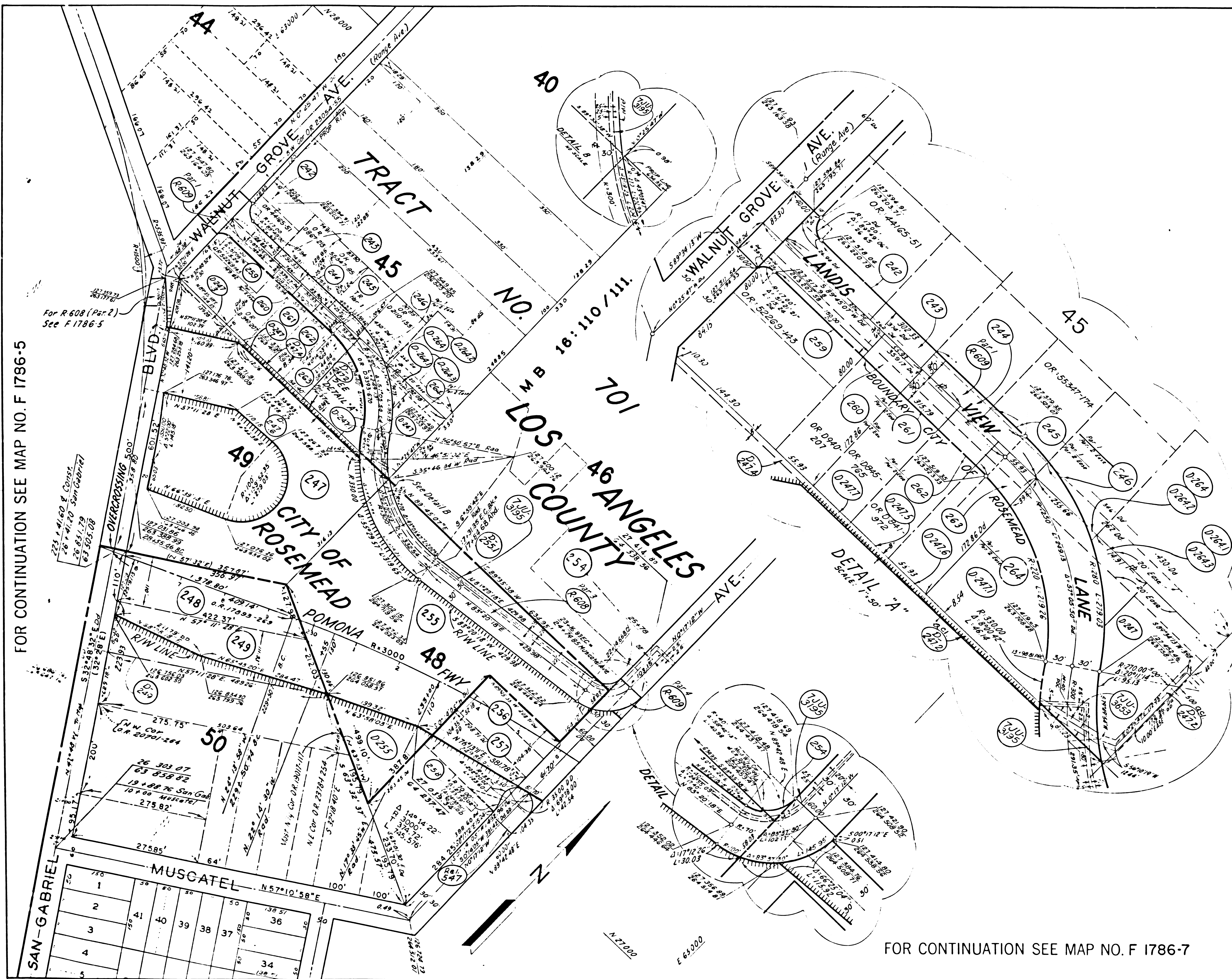
F.M. 21290-5

F.M. 21290-5



FOR CONTINUATION SEE MAP NO. F 1786-4





FOR CONTINUATION SEE MAP NO. F 1786-5

FOR CONTINUATION SEE MAP NO. F 1786-7

STATE	FEDERAL PROJECT NO.	EFFECTIVE DATE	SHEET NO.	TOTAL SHEETS
CALIF			7	

PARCEL NO	GRANTOR OR GRANTEE	AREA *			INST	RECORDING DATA	
		ACO	EXCESS	TOTAL		DATE	OR
242	KOON				COND	12-4-67	D3848-198
243	KOON				COND	12-4-67	D3848-198
244	KOON				COND	12-4-67	D3848-198
245	KOON				COND	12-4-67	D3848-198
246	KITCHENS				FEE	8-10-66	D3393-670
247	CASTLE				FEE	11-5-57	36012-94
D-247	LOPEZ				D.D.	7-25-69	D4446-794
D-247.1	LOMENZO				D.D.	6-6-68	D4024-431
D-247.2	St. to ...				D.D.	3-15-71	D4946-427
D-247.3	ROSEMEAD				D.D.	10-8-65	D4520-673
D-247.5	ROSE				D.D.	8-30-68	D4118-303
D-247.6	NATH				D.D.	12-18-68	D4228-303
D-247.7	STONE				D.D.	4-2-68	D3958-627
248	PLATT				FEE	12-27-62	D1866-174
249	PARKER				FEE	7-18-60	D913-208
D-249	RIDDLE				D.D.	10-27-66	D3466-913
254	FAUGHT				FEE	10-7-64	D2654-991
255	HARRIS				FEE	2-14-63	D1920-380
D-255	BELL				D.D.	2-27-67	D3568-561
D-255.1	FAUGHT				D.D.	11-7-67	D3823-169
256	PEREZ				FEE	2-20-59	D372-913
257	OLIVAS				FEE	1-14-63	D1883-939
258	KEPHART				FEE	1-18-63	D1890-598
259	ASEBEDO				FEE	2-6-67	D3550-959
260	TOOHEY				FEE	7-14-67	D3702-595
261	STONE				FEE	9-30-66	D3441-945
262	ROSE				FEE	10-7-66	D3448-625
263	KOON				COND	12-4-67	D3848-198
264	STAFFORD				FEE	6-13-66	D3333-112
D-264	KITCHENS				D.D.	2-28-68	D3925-94
D-264.2	KITCHENS				D.D.	4-19-68	D3976-623
D-264.1	EDINGER				D.D.	2-28-68	D3925-97
D-264.3	EDINGER				D.D.	4-19-68	D3976-620
D-264.4	State to So. G. Gas Co.				D.D.	11-16-70	D4887-371
R-547	L.A. COUNTY				REL	6-29-67	R2777-819
R-608	ROSEMEAD				REL	3-30-70	R3392-336
R-609	L.A. COUNTY				REL	3-30-70	R3392-338
JU-3195	PACIFIC T&T CO.				JU	12-22-69	D4588-561
JU-3653	S.G.V. WATER CO.				JU	11-21-68	D4202-467

ISSUE DATE

STATE OF CALIFORNIA
 TRANSPORTATION DEPARTMENT OF
 AGENCY PUBLIC WORKS
 DIVISION OF HIGHWAYS
 (OLD 7-LA-172- MonP, A, B)
R/W MAP
 NO. F 1786-6
 07-LA-60 PM 8.6
 DATE 8-31-70
 R.W.P.E. SR.

LEGEND: ACCESS DENIED EXCLUDES STREET AREA
 AREA IN SQUARE FEET UNLESS OTHERWISE NOTED
 PREVIOUS RECORD DATA INCLUDES EASEMENT AREA

F.M. 21290-6

F.M. 21290-6

