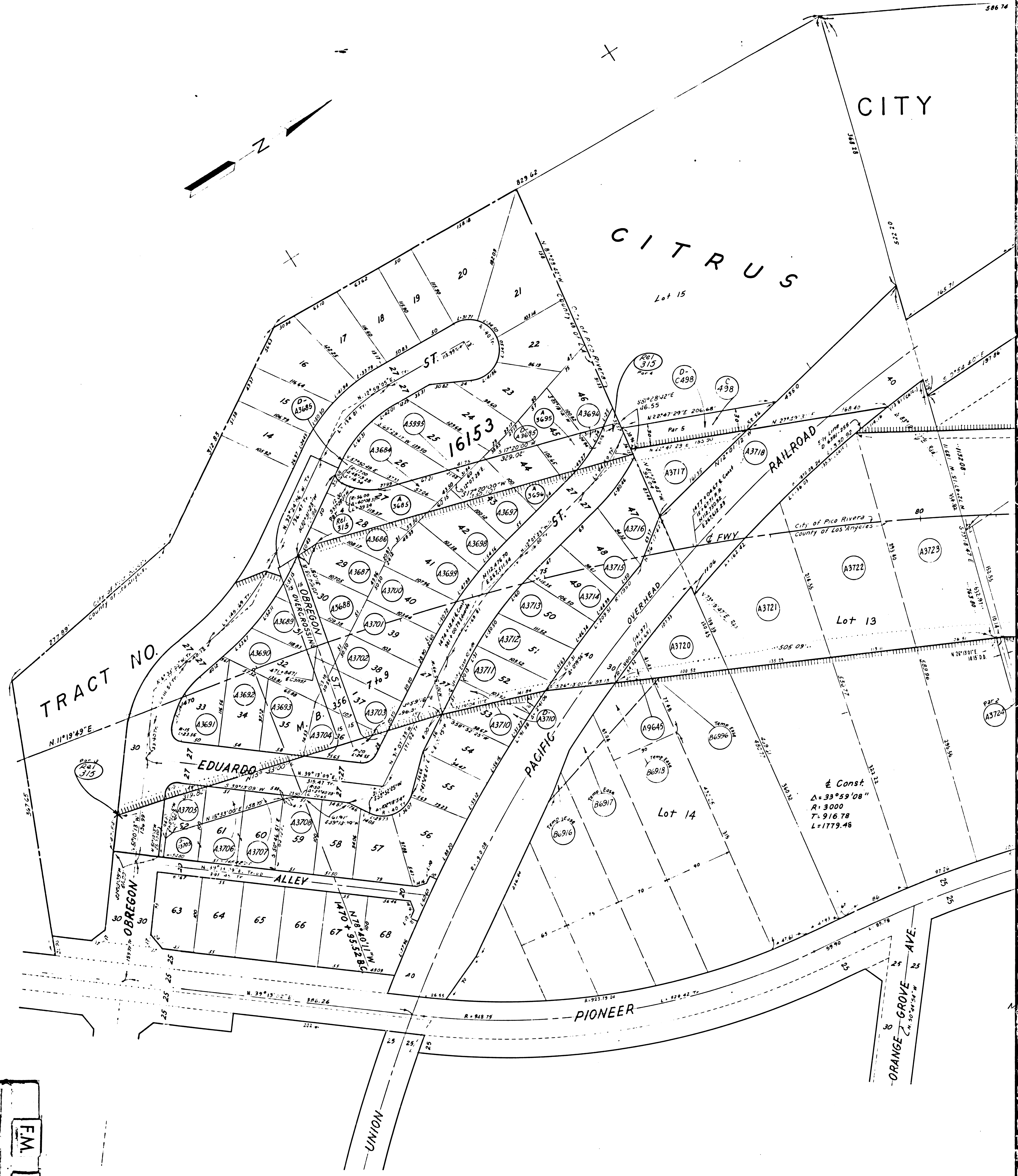


FOR CONTINUATION SEE MAP NO. F-1964



CITY

CITRUS

TRACT NO. 16153

± Const.  
 $\Delta = 33^{\circ}59'08''$   
 $R = 3000$   
 $T = 916.78$   
 $L = 1779.48$

FM 211292  
 AT OF A7

A3684	L S Herrera, et ux 2549-335 727.59	A3691	S S Rodriguez 470-261 3-18-59	A3689	Josa Ontiveros 2559-138 2-3-52	A3706	D G 25
A3685	William Flores, et ux 415-810 3-31-59	A3692	A O Fuentes, et ux 258-192 2-3-59	A3700	P G Morales, et ux 2586-42 2-16-52	A3707	J M 25
A3685	Luis S Herrera, et ux 25719-302 12-2-59	A3693	Jos M Delgado, et ux 435-532 4-16-52	A3701	S T Perricong, et ux 2567-568 2-11-52	A3708	H C 25
A3686	Ernestine Esquer 2585-876 4-7-59	A3694	A G Ruvalcaba, et ux 2581-384 10-17-52	A3702	J Baltierra, et ux 2567-883 2-17-52	A3710	M U 25
A3687	Manuel Contrillo, et ux 2585-876 4-26-59	A3695	Robert Helguin, et ux 339-20 3-10-59	A3703	F Yanez, et ux 2582-178 2-3-52	A3710	D 25
A3688	Alfonso G Gomez 384-81 2-16-59	A3696	Manuel R SanJez, et ux 2571-123 3-13-59	A3704	L Tafaja, et ux 2559-736 2-17-52	A3711	J B L 25
A3689	Ralph Gardea, et ux 2583-540 3-3-59	A3697	S T Brea, et ux 354-803 2-4-59	A3705	P Y Landco, et ux 2582-391 2-11-52	A3712	A M 25
A3690	Cruz A Cabral, et ux 2576-871 2-26-59	A3698	Francisco E Vjaca, et ux 2585-48 2-16-52	A3705	Self Fracking Supply, Inc 2583-764 2-23-52	A3713	A P 25

CITY OF

PICO

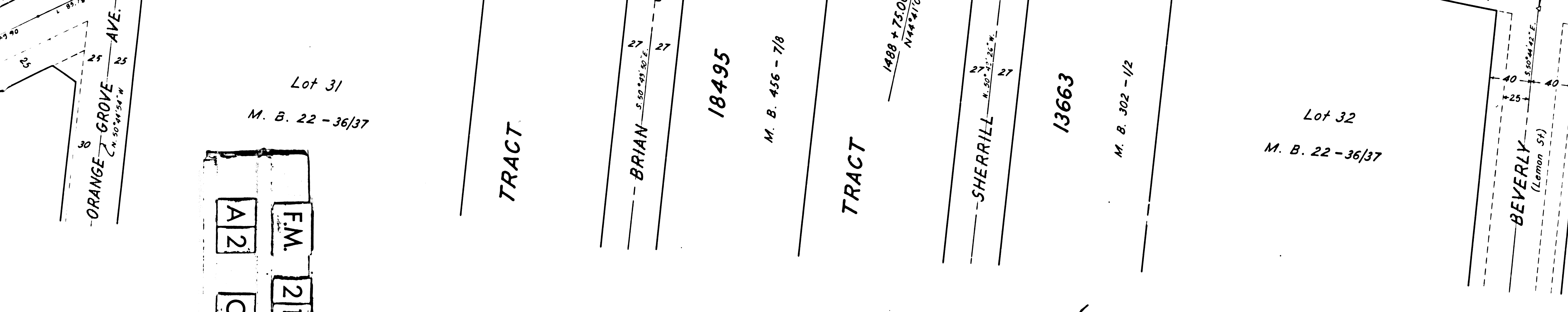
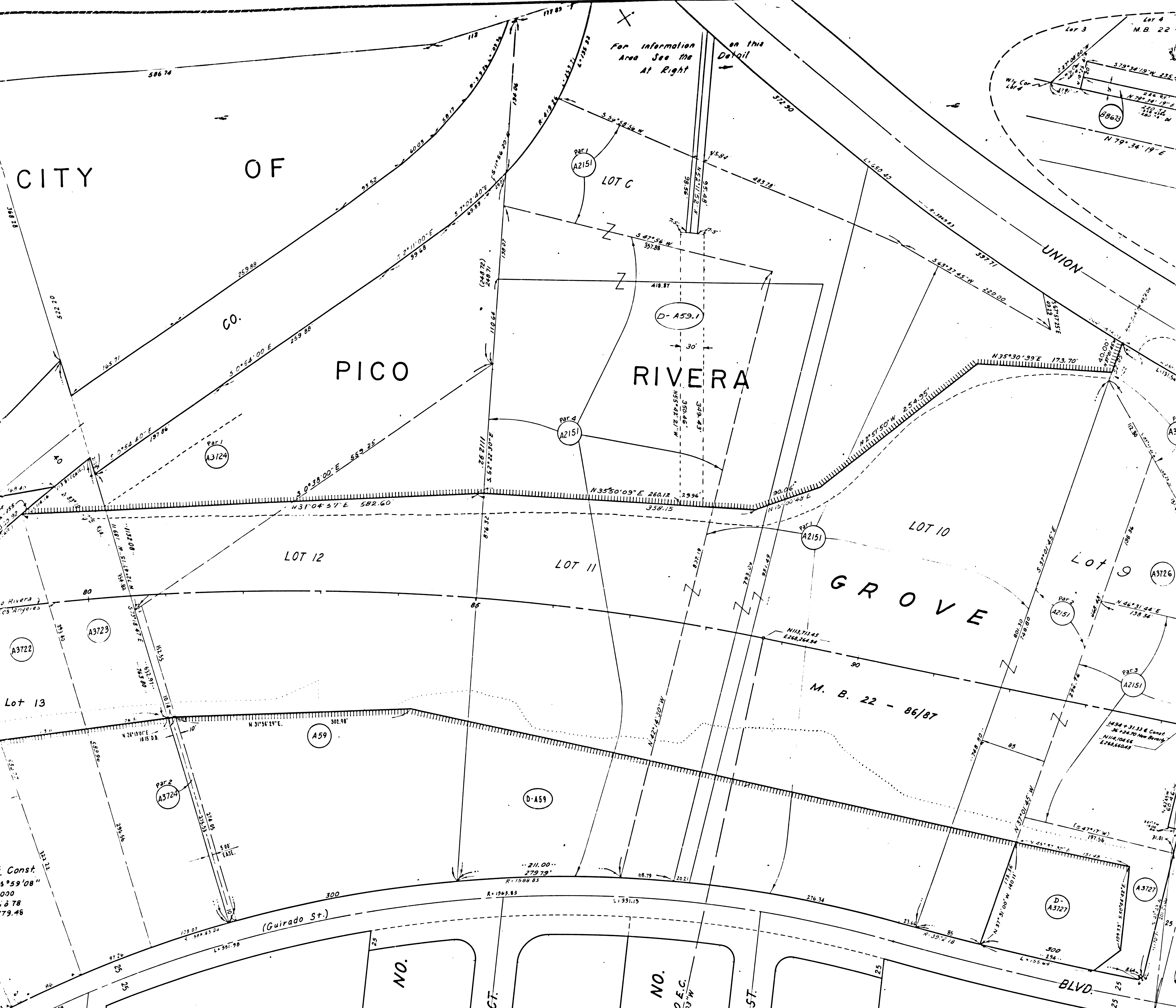
RIVERA

GROVE

Const  
35°59'08"  
3000  
9.878  
1179.46

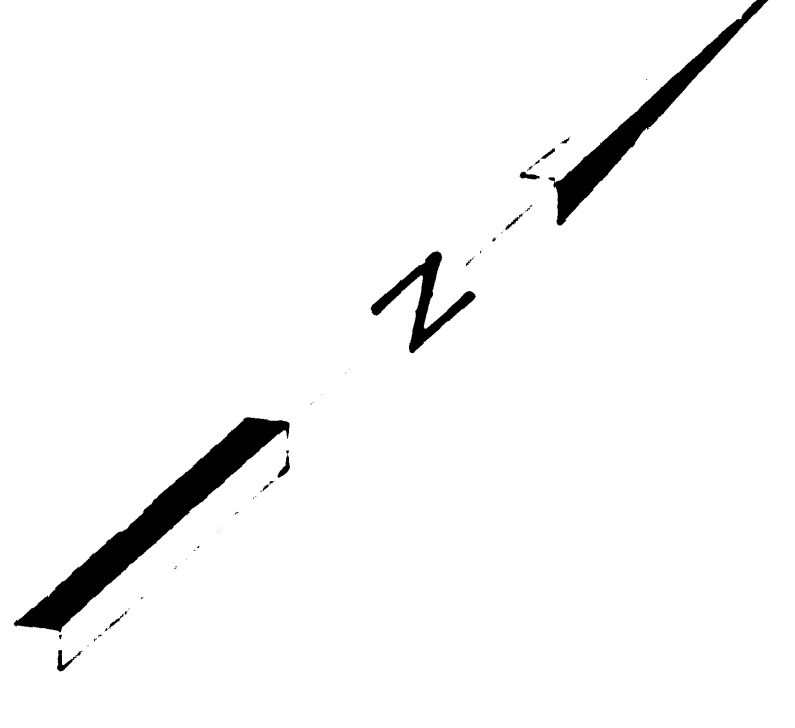
For information  
Area See the  
At Right

on this  
Detail



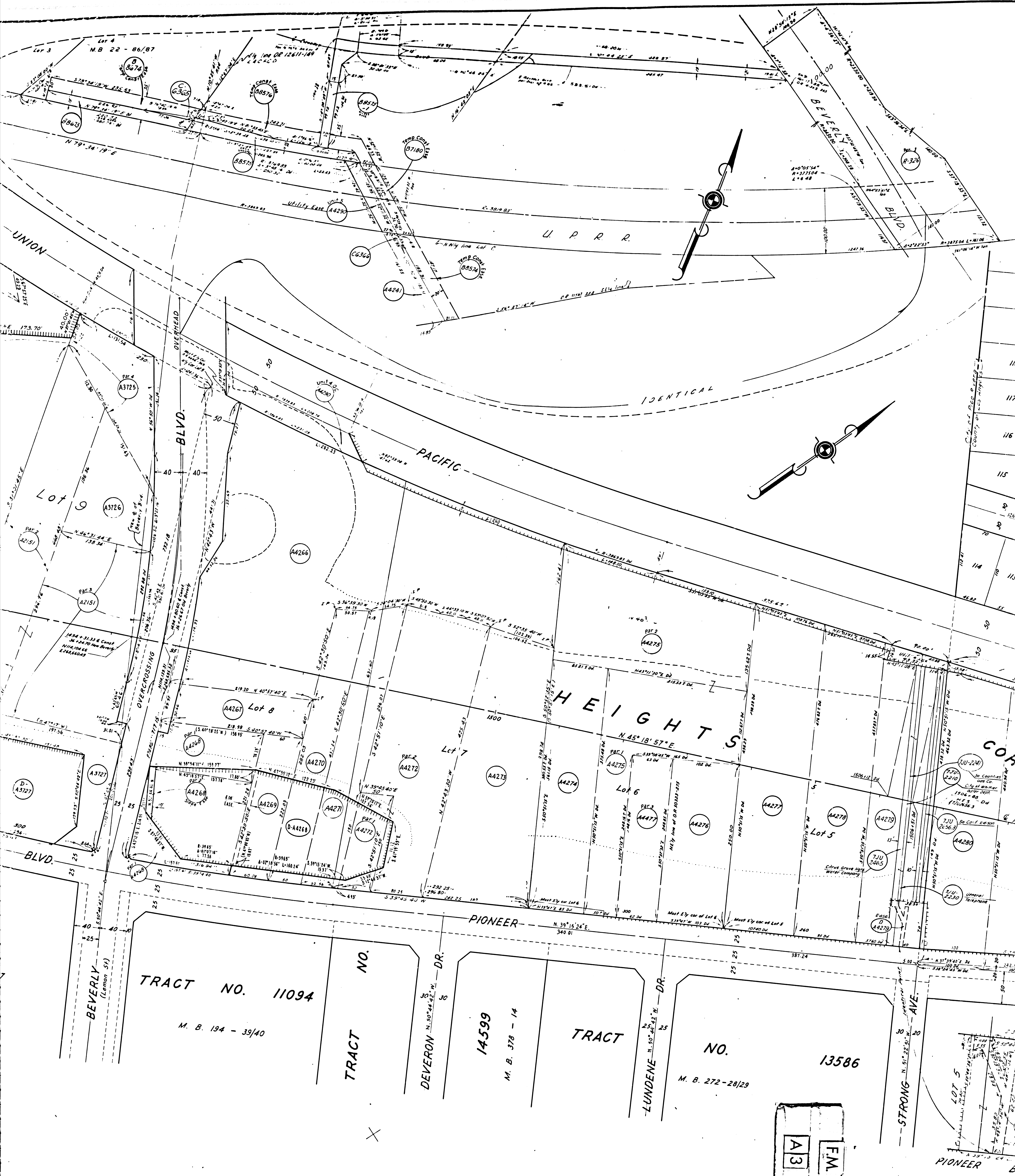
Lot 31  
M. B. 22 - 36/37

A2	F.M.
21	21292
OF	
A7	



43699	Jose Ontiveros Fee 0359 138	43706	DG Pante, et ux Fee 0439 029	43714	H V Martinez, et ux Fee 0350-358	43723	T. Edgerly, et ux Fee D102 916
43700	PG Morales, et ux Fee 0366 42	43707	JM Lopez, et ux Fee 0393 4	43715	SJ Santidiaz, et ux Fee 0354 797	43724	City of Whittier Fee D144-926
43701	ST Perricone, et ux Fee 0367 568	43708	H Cruz Fee 0366 226	43716	J R Garcia, et ux Fee 0137 914	43725	Marshall L Brundage et ux Fee D727 353
43702	J Baltierra, et ux Fee 0367 083	43710	MJ Torres, et ux Fee 0403-738	43717	TE Connolly, Inc Fee D132-708	43726	So Pac Dist Chrtl & Mvmt Fee 02897 607
43703	E Vanez, et ux Fee 0353 178	43711	Severo M Lopez, et ux Fee 03016 562	43718	Union Pacific RR Co Eggment 02400-804	43727	M E Gordon Fee 043-411
43704	L Tafaja, et ux Fee 0439 236	43712	J B Duran, et ux Fee 0354 809	43720	A A Wirth Fee D133-341	43728	So Calif Edison Co D 009
43705	PY Landro, et ux Fee 0443 391	43713	A Rodriguez, et ux Fee 0376 619	43721	AL Coolley, et ux Fee D150-68	43729	So Calif Edison Co D 009
43706	State of 3511 Mocking Supply Inc Fee 0443 164	43713	AP Cardiel, et ux Fee 0359 164	43722	BT Lyle, et ux Fee 0219 812	43730	So Calif Edison Co D 009
						43731	So Calif Edison Co D 009
						43732	So Calif Edison Co D 009
						43733	So Calif Edison Co D 009
						43734	So Calif Edison Co D 009
						43735	So Calif Edison Co D 009
						43736	So Calif Edison Co D 009
						43737	So Calif Edison Co D 009
						43738	So Calif Edison Co D 009
						43739	So Calif Edison Co D 009
						43740	So Calif Edison Co D 009
						43741	So Calif Edison Co D 009
						43742	So Calif Edison Co D 009
						43743	So Calif Edison Co D 009
						43744	So Calif Edison Co D 009
						43745	So Calif Edison Co D 009
						43746	So Calif Edison Co D 009
						43747	So Calif Edison Co D 009
						43748	So Calif Edison Co D 009
						43749	So Calif Edison Co D 009
						43750	So Calif Edison Co D 009
						43751	So Calif Edison Co D 009
						43752	So Calif Edison Co D 009
						43753	So Calif Edison Co D 009
						43754	So Calif Edison Co D 009
						43755	So Calif Edison Co D 009
						43756	So Calif Edison Co D 009
						43757	So Calif Edison Co D 009
						43758	So Calif Edison Co D 009
						43759	So Calif Edison Co D 009
						43760	So Calif Edison Co D 009
						43761	So Calif Edison Co D 009
						43762	So Calif Edison Co D 009
						43763	So Calif Edison Co D 009
						43764	So Calif Edison Co D 009
						43765	So Calif Edison Co D 009
						43766	So Calif Edison Co D 009
						43767	So Calif Edison Co D 009
						43768	So Calif Edison Co D 009
						43769	So Calif Edison Co D 009
						43770	So Calif Edison Co D 009
						43771	So Calif Edison Co D 009
						43772	So Calif Edison Co D 009
						43773	So Calif Edison Co D 009
						43774	So Calif Edison Co D 009
						43775	So Calif Edison Co D 009
						43776	So Calif Edison Co D 009
						43777	So Calif Edison Co D 009
						43778	So Calif Edison Co D 009
						43779	So Calif Edison Co D 009
						43780	So Calif Edison Co D 009
						43781	So Calif Edison Co D 009
						43782	So Calif Edison Co D 009
						43783	So Calif Edison Co D 009
						43784	So Calif Edison Co D 009
						43785	So Calif Edison Co D 009
						43786	So Calif Edison Co D 009
						43787	So Calif Edison Co D 009
						43788	So Calif Edison Co D 009
						43789	So Calif Edison Co D 009
						43790	So Calif Edison Co D 009
						43791	So Calif Edison Co D 009
						43792	So Calif Edison Co D 009
						43793	So Calif Edison Co D 009
						43794	So Calif Edison Co D 009
						43795	So Calif Edison Co D 009
						43796	So Calif Edison Co D 009
						43797	So Calif Edison Co D 009
						43798	So Calif Edison Co D 009
						43799	So Calif Edison Co D 009
						43800	So Calif Edison Co D 009

- B7180 Union Pacific R.R  
Temp Const East
- B8574 Southern Pacific Co  
Temp Const East
- B8576 So Calif Edison Co  
Temp Const East
- B8674 Asso So Investmt Co  
Const East



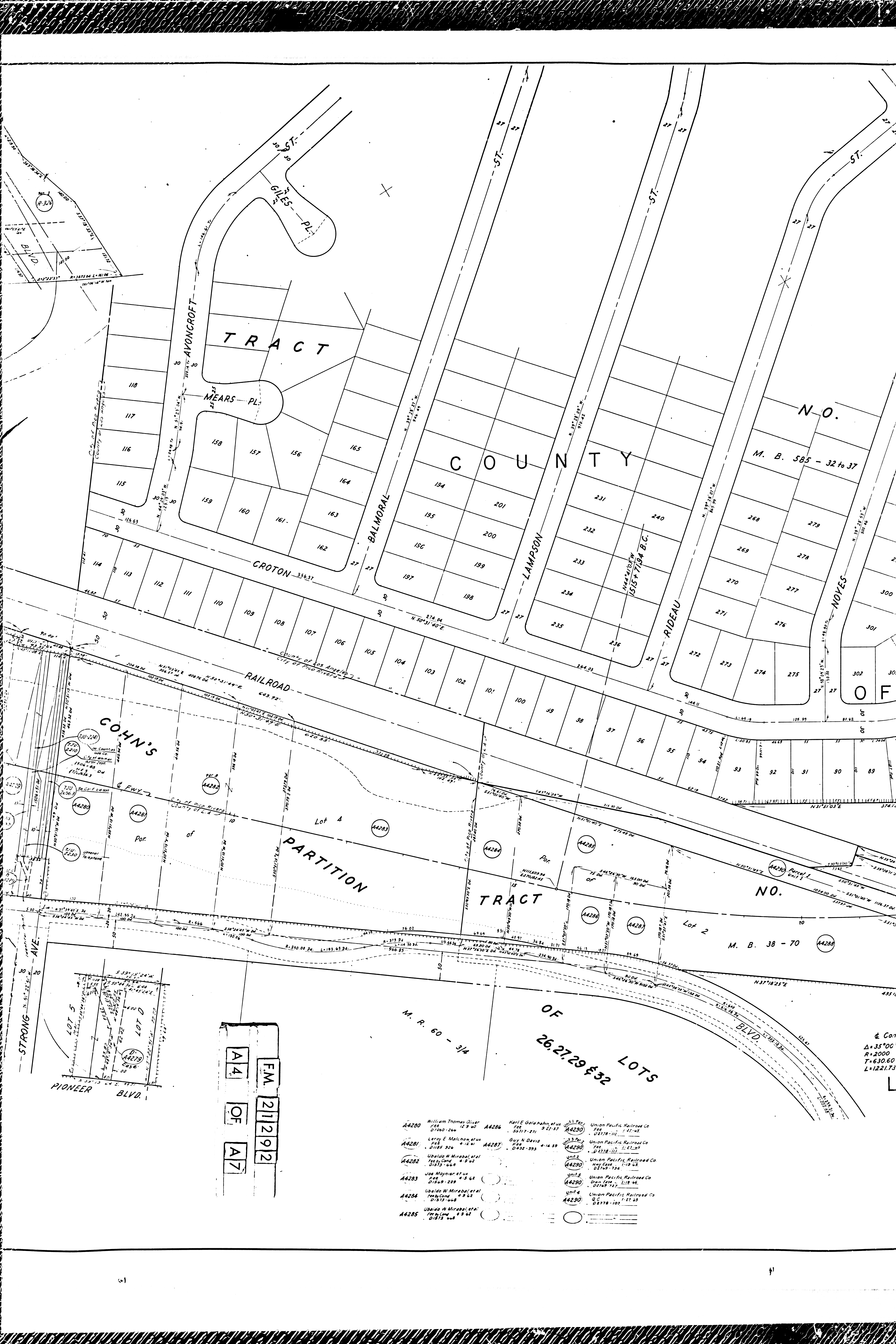
TRACT NO. 11094  
M. B. 194 - 39/40

TRACT NO. 14599  
M. B. 378 - 14

TRACT NO. 13586  
M. B. 272 - 28/29

A4266	H.E. Grah, et ux F&E 0-17-38	A4271	G.H. Reilsbach, et ux F&E 0-7-27	A4276	Ira H. Bellamy, et ux F&E 0-13-19	A4279	State to Gen Tel Co 00 Eas 4-13-69 D4339 - 45/7453	C6365	Associated So Invest Co Debt F&E 7-2-65 D2966-868
A4267	W. Cogswell, SR et ux F&E 0-13-05-69	A4272	N.M. Eastman, et ux F&E 0-18-6-56	A4277	Ubaldo W. Mirabal, et ux F&E 0-13-2-59	BA4268	STATE TO FREN B. BEHNE D 5-1-64 D4318-1671/64	C6366	South Pacific Co Eas D2966-364
A4268	Ruth S. Bernke, et ux F&E 0-18-5-74	A4273	PH Cor, et ux F&E 0-7-58-76	A4278	Orace M. Schmidt F&E 0-10-5-64				
A4269	D.B. Hanna Spears F&E 0-18-5-51	A4274	JW Nelson, et ux F&E 0-18-6-41	A4279	L. Adorno, et ux F&E 0-11-1-54				
A4270	L.W. Barlett, et ux F&E 0-18-6-60	A4275	John W. Nelson F&E 0-18-2-58	A4477	Rose Hills Mem Pt Assn et al F&E by Cond 8-16-62 0-5-9-79				

F.M. 211292  
A3 OF A7



FM. 211292  
 OF A7

- |       |  |       |   |        |  |
|-------|--|-------|---|--------|--|
| A4280 | William Thomas Oliver<br>Fee<br>D190-266                   | A4286 | Harl E. Galahahn et ux<br>Fee<br>D317-271 | A4290  | Union Pacific Railroad Co<br>Fee<br>D2778-111      |
| A4281 | Leroy E. Malchow et ux<br>Fee<br>D185-326                  | A4287 | Guy N. Davis<br>Fee<br>D432-393           | A4289  | Union Pacific Railroad Co<br>Fee<br>D42378-111     |
| A4282 | Ubaldo W. Mirabal et al<br>Fee by Cond. 4-9-62<br>D187-668 |       |   | Unit 2 | Union Pacific Railroad Co<br>New Case<br>D3769-734 |
| A4283 | Joe Moynier et ux<br>Fee<br>D1569-239                      |       |   | Unit 3 | Union Pacific Railroad Co<br>New Case<br>D2169-721 |
| A4284 | Ubaldo W. Mirabal et al<br>Fee by Cond. 4-9-62<br>D187-668 |       |   | Unit 4 | Union Pacific Railroad Co<br>New Case<br>D2178-107 |
| A4285 | Ubaldo W. Mirabal et al<br>Fee by Cond. 4-9-62<br>D187-668 |       |   |        |  |

& Cont.  
 Δ = 35°00'  
 R = 2000  
 T = 630.60  
 L = 1221.73



Portion of  
Cohn's Partion of lots  
26, 27, 29, & 32 of  
Rancho Peseo de  
Barbato  
MB 60-3-4 N10°18'57"E

& Const.  
Δ=35°00'00"  
R=2000  
T=630.60  
L=1221.73

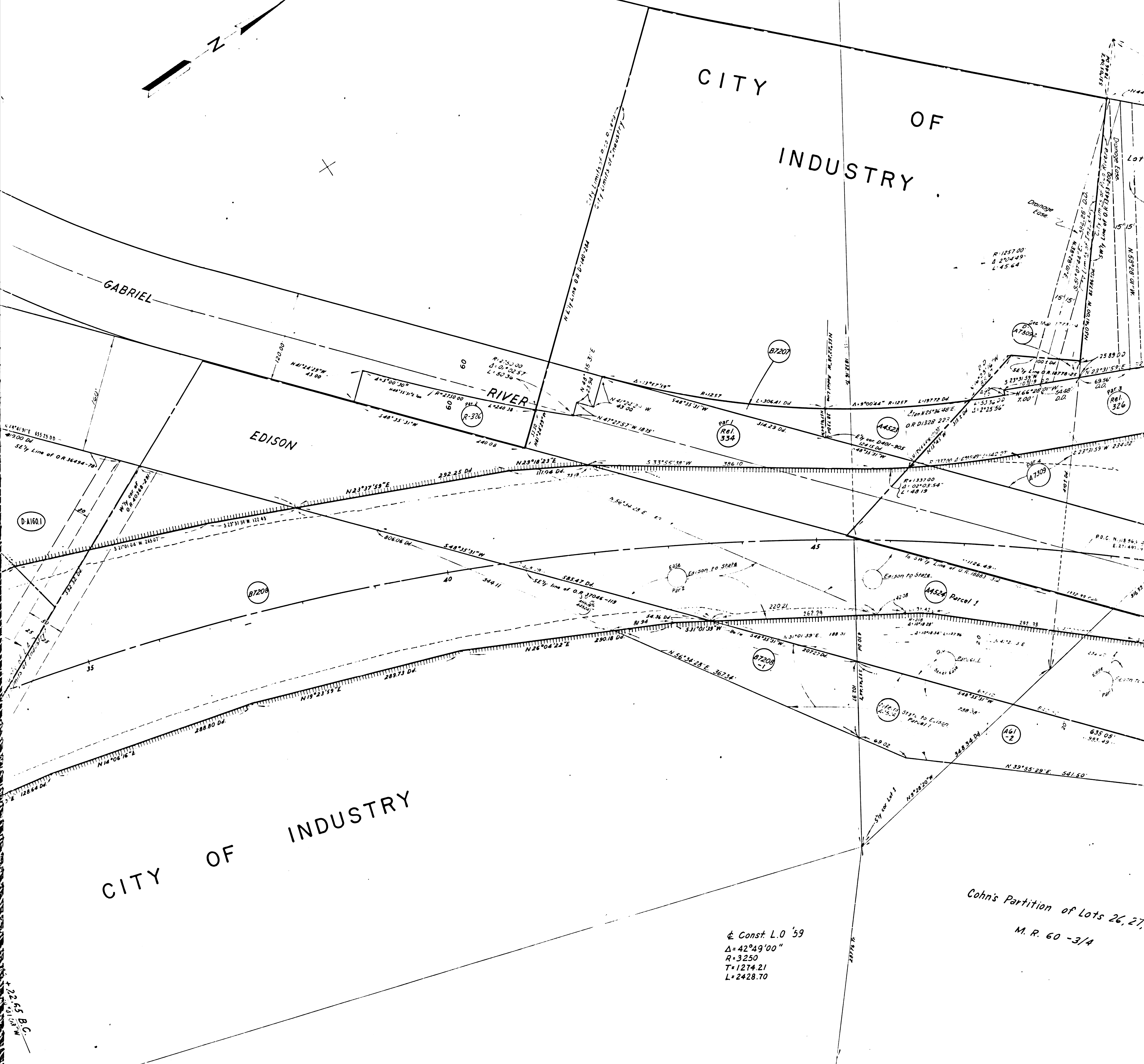
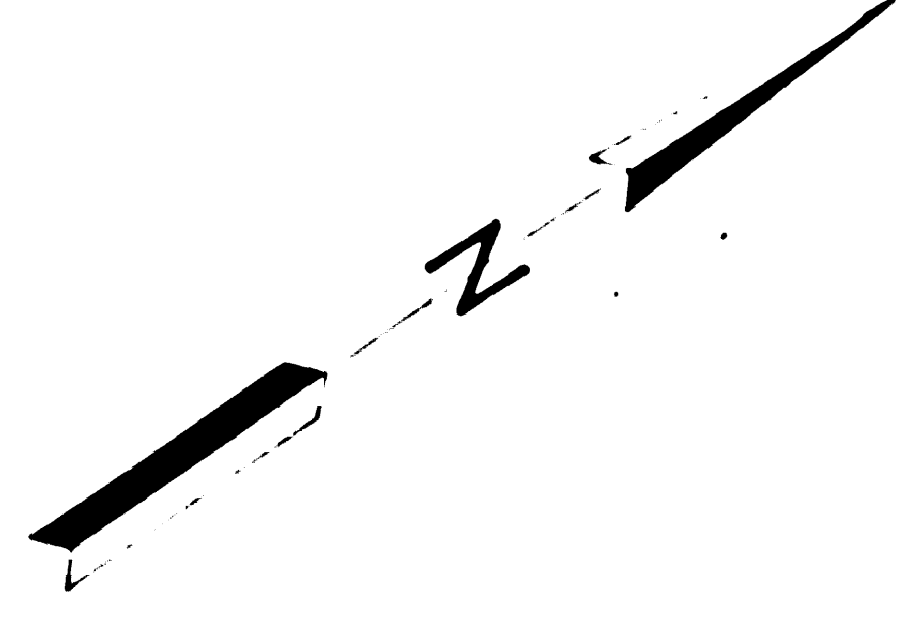
LOS ANGELES

F.M. 21292  
A5  
OF  
A7

- |        |   |       |  |       |              |
|--------|---|-------|--|-------|--------------|
| A160   | Vista, Inc.<br>217-94<br>50343-374<br>Share 74<br>Walter W. Shepherd, et ux<br>5 8 45 | A4288 | Joe Maynier, et ux<br>74<br>07655-644<br>4 4 42      | B5712 | Refinery Lot |
| A160   | State to Beverly J. Barr<br>D.D.<br>0 0 00  | A4289 | Rose Hills Memorial PK<br>74<br>07647-854<br>15 4 41 |       |              |
| A380   | Joe Maynier, et ux<br>74<br>07721-476   |       |  |       |              |
| A160.1 | State to Beverly J. Barr<br>D.D.<br>0 0 00  |       |  |       |              |

# CITY OF PICO RIVERA

## CITY OF INDUSTRY



## CITY OF INDUSTRY

$\Delta = 42^\circ 49' 00''$   
 $R = 3250$   
 $T = 1274.21$   
 $L = 2428.70$

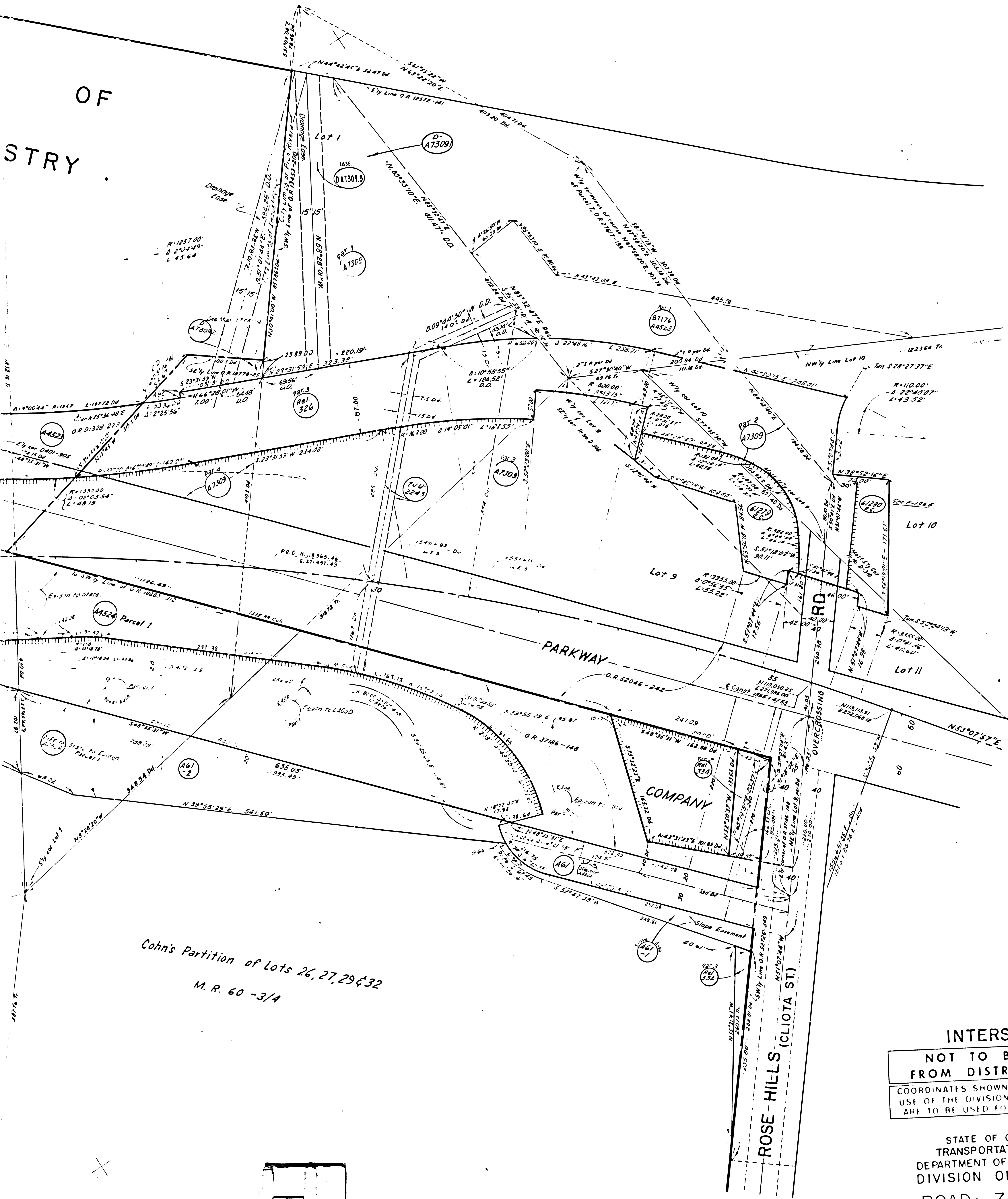
Cohn's Partition of Lots 26, 27,  
 M. R. 60 -3/4

FM 2112912  
 OF A7  
 A61

- |  |   |   |   |
|--|---|---|---|
| <p>(AGI-2)</p> <p>(AGI-1)</p> <p>(AGI)</p> <p>(A4523)</p> <p>(A4524)</p> <p>(A4525)</p> <p>(A4526)</p> <p>U.S. Govt to State of Calif<br/>1950<br/>07/14<br/>07008-057<br/>11-18-64<br/>See also P-1866 &amp; P-1967</p> | <p>(B7207)</p> <p>(B7208)</p> <p>(B7209)</p> <p>(B7210)</p> <p>(B7211)</p> <p>(B7212)</p> <p>(B7213)</p> <p>(B7214)</p> <p>(B7215)</p> <p>(B7216)</p> <p>(B7217)</p> <p>(B7218)</p> <p>(B7219)</p> <p>(B7220)</p> <p>(B7221)</p> <p>(B7222)</p> <p>(B7223)</p> <p>(B7224)</p> <p>(B7225)</p> <p>(B7226)</p> <p>(B7227)</p> <p>(B7228)</p> <p>(B7229)</p> <p>(B7230)</p> <p>(B7231)</p> <p>(B7232)</p> <p>(B7233)</p> <p>(B7234)</p> <p>(B7235)</p> <p>(B7236)</p> <p>(B7237)</p> <p>(B7238)</p> <p>(B7239)</p> <p>(B7240)</p> <p>(B7241)</p> <p>(B7242)</p> <p>(B7243)</p> <p>(B7244)</p> <p>(B7245)</p> <p>(B7246)</p> <p>(B7247)</p> <p>(B7248)</p> <p>(B7249)</p> <p>(B7250)</p> | <p>(A7309)</p> <p>(A7310)</p> <p>(A7311)</p> <p>(A7312)</p> <p>(A7313)</p> <p>(A7314)</p> <p>(A7315)</p> <p>(A7316)</p> <p>(A7317)</p> <p>(A7318)</p> <p>(A7319)</p> <p>(A7320)</p> <p>(A7321)</p> <p>(A7322)</p> <p>(A7323)</p> <p>(A7324)</p> <p>(A7325)</p> <p>(A7326)</p> <p>(A7327)</p> <p>(A7328)</p> <p>(A7329)</p> <p>(A7330)</p> <p>(A7331)</p> <p>(A7332)</p> <p>(A7333)</p> <p>(A7334)</p> <p>(A7335)</p> <p>(A7336)</p> <p>(A7337)</p> <p>(A7338)</p> <p>(A7339)</p> <p>(A7340)</p> <p>(A7341)</p> <p>(A7342)</p> <p>(A7343)</p> <p>(A7344)</p> <p>(A7345)</p> <p>(A7346)</p> <p>(A7347)</p> <p>(A7348)</p> <p>(A7349)</p> <p>(A7350)</p> | <p>State to City of Pico Rivera<br/>D.O. 07-68<br/>04035-670</p> <p>State to City of Pico Rivera<br/>REL<br/>R210-80</p> <p>State to City of Industry<br/>REL<br/>R210-88</p> <p>STATE OF CALIF BY RICK BUCKER<br/>D.D. EXEC.<br/>04100-01/81</p> |
|--|---|---|---|

RIVERA

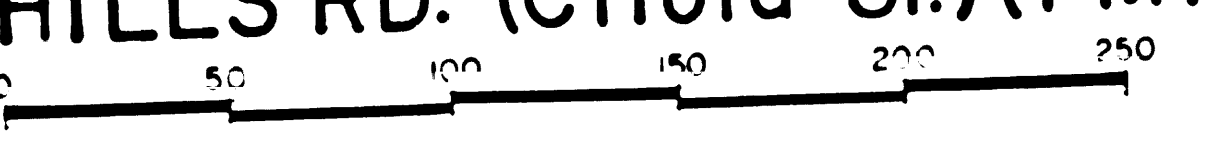
OF  
STRY



FOR CONTINUATION SEE MAP NO. F-1966

INTERSTATE  
 NOT TO BE TAKEN  
 FROM DISTRICT OFFICE  
 COORDINATES SHOWN ARE FOR INTERNAL  
 USE OF THE DIVISION OF HIGHWAYS AND  
 ARE TO BE USED FOR REFERENCE ONLY

STATE OF CALIFORNIA  
 TRANSPORTATION AGENCY  
 DEPARTMENT OF PUBLIC WORKS  
 DIVISION OF HIGHWAYS  
 ROAD: 7-LA-605  
 (Old 7-LA-170-B, Prv., ldy.)  
**RIGHT OF WAY RECORD MAP**  
 OBREGON ST.(PM.13.94)  
 to  
 ROSE HILLS RD. (Cliota St.)(PM15.57)



EM. 211292  
 OF  
 A7

State to City of Pico Rivera  
 A73091 O.D. 6-17-65  
 04035-670  
 State to City of Pico Rivera  
 326 Rel. 3-23-65  
 R2210-80  
 State to City of Industry  
 334 Rel. 3-23-65  
 R2210-88  
 STATE OF CALIFORNIA  
 DEPARTMENT OF PUBLIC WORKS  
 DIVISION OF HIGHWAYS  
 DATE 6-24-65  
 DRAWN BY J.M.H.

F-1965

F.M. 21292