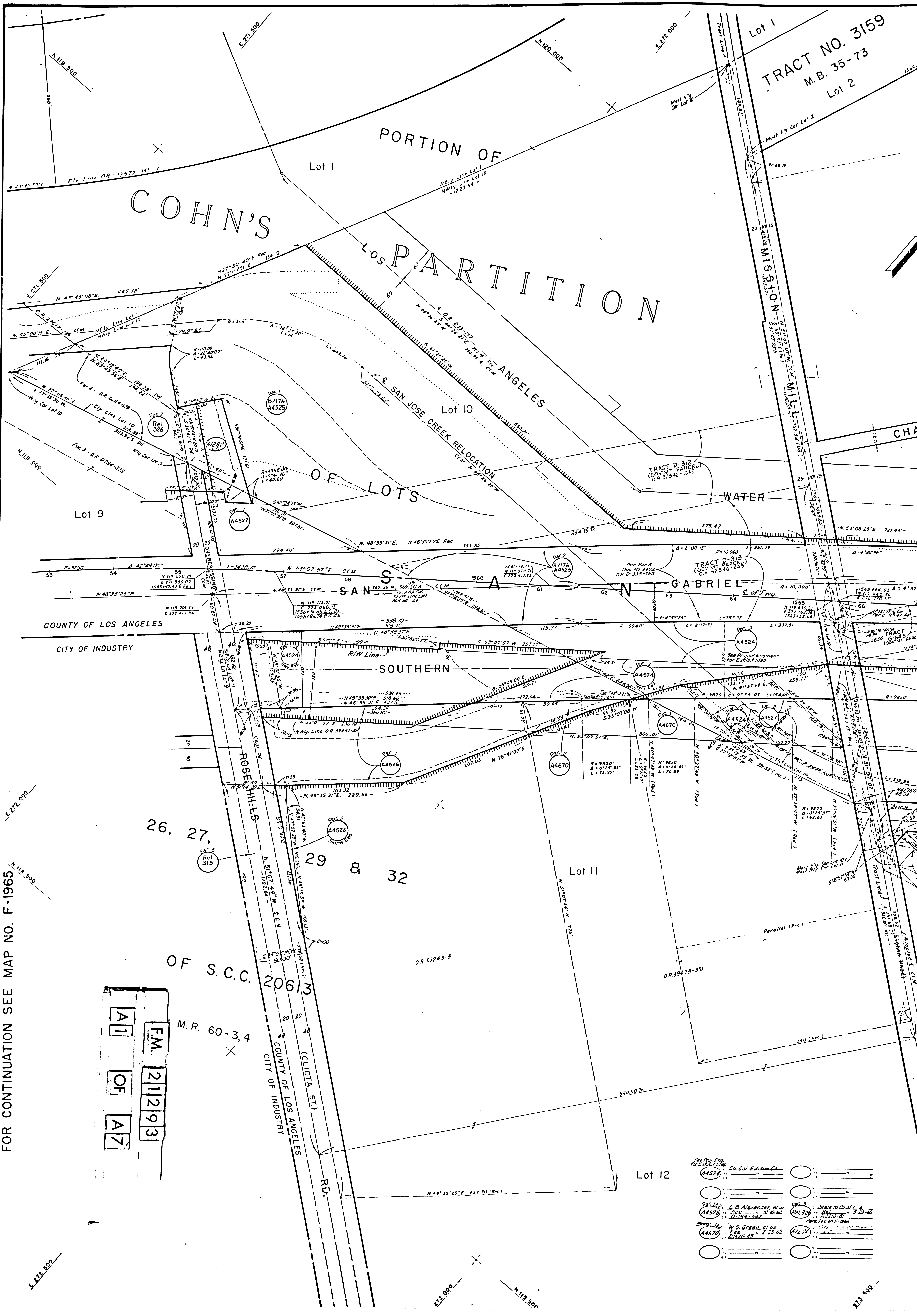


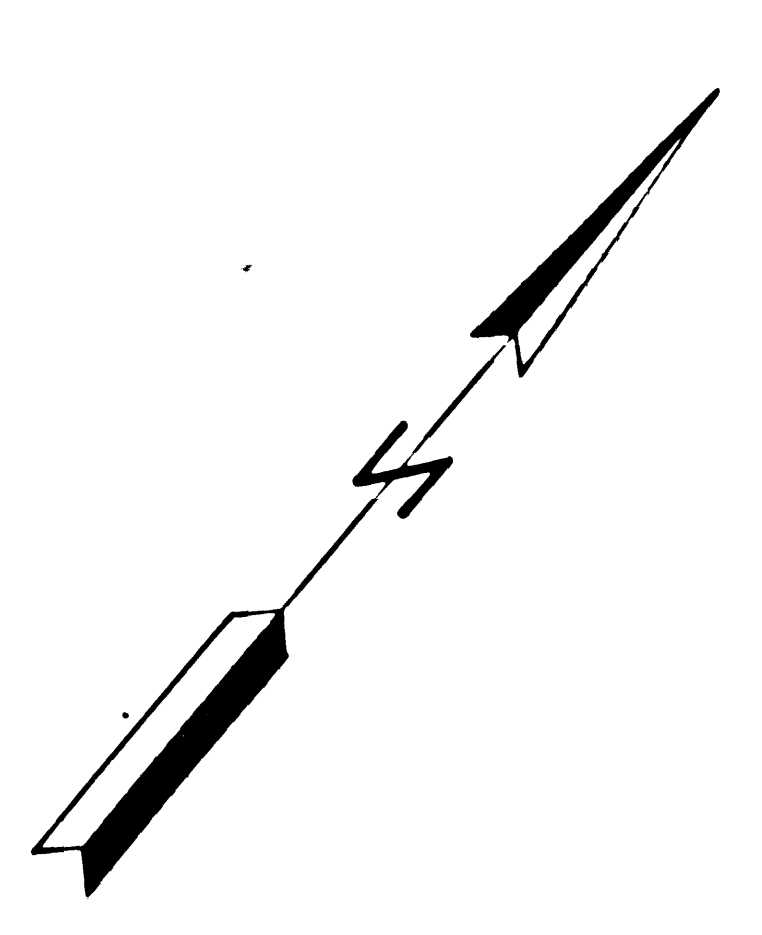
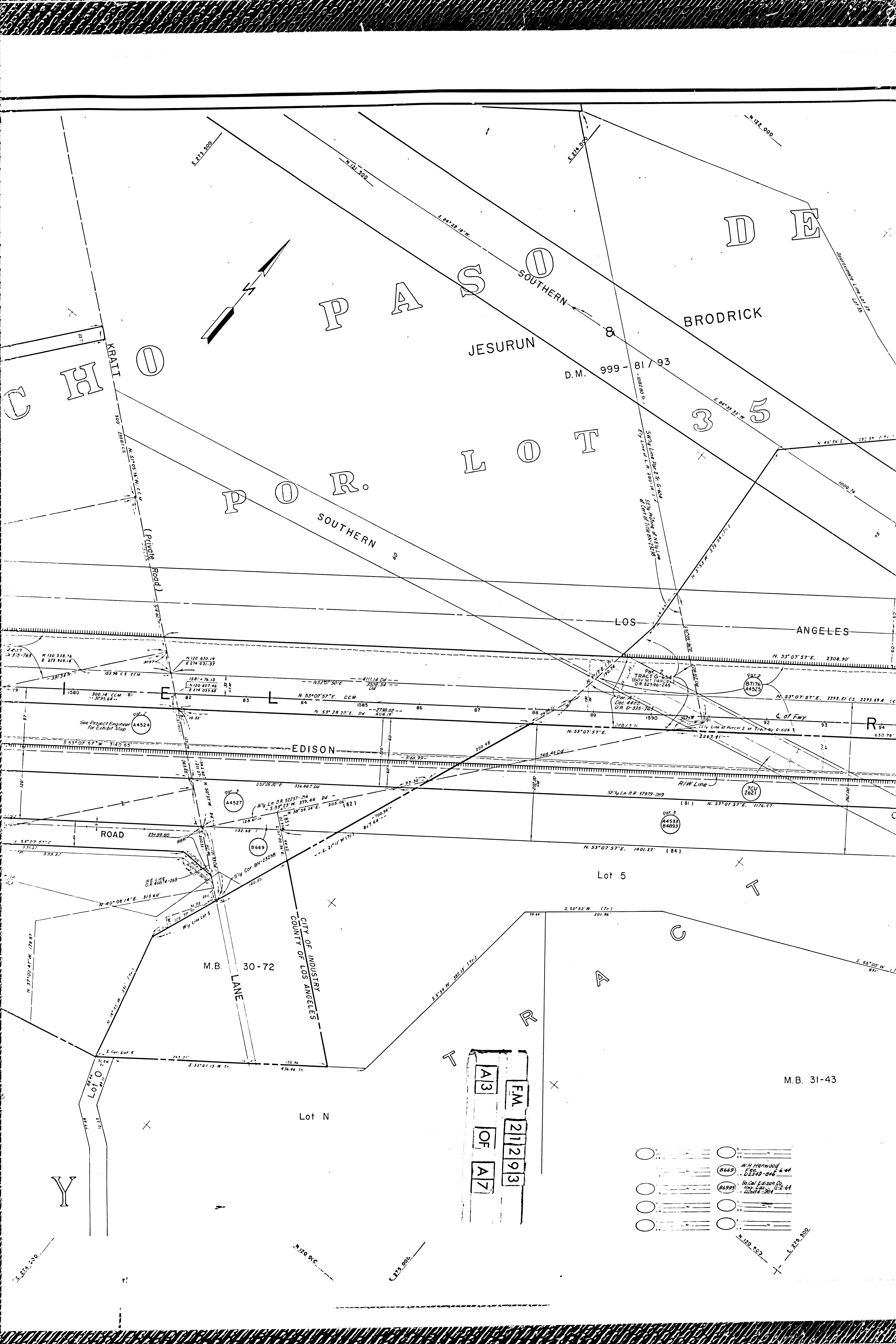
FOR CONTINUATION SEE MAP NO. F-1965

FM 21293
A1 OF A7

M.R. 60-3,4



Parcel No.	Owner	Reference
A4524	See Proj. Eng. for Exhibit Map	
A4526	L. B. Alexander, et al	State to Co of L. A. Rel. 328
A4670	W. S. Green, et al	State to Co of L. A. Rel. 328



FM. 211293
OF A7

-
-
-
-
-
-
-
-
-
-

W.H. Henwood
Fee
DE 349-846

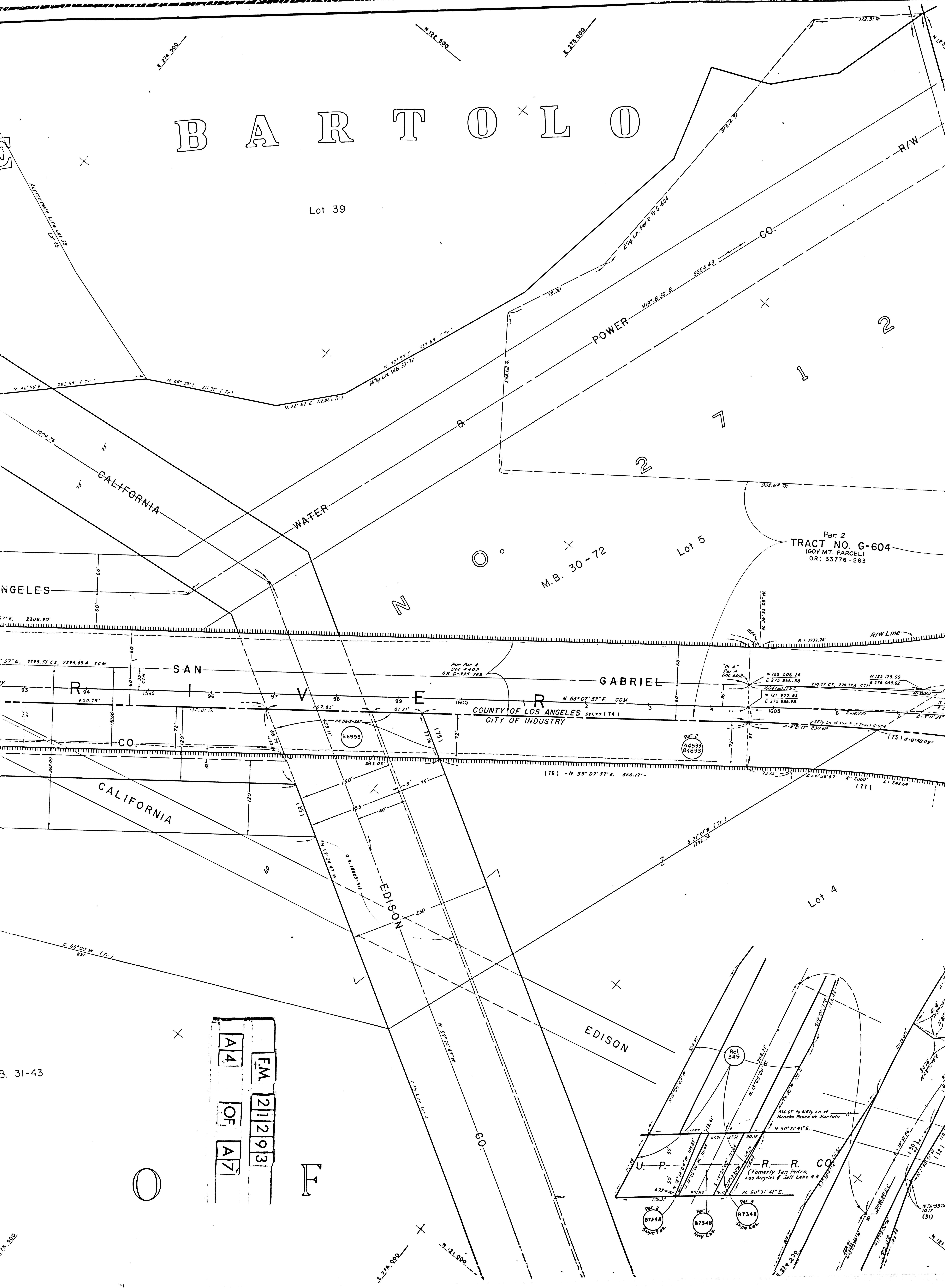
So. Cal. Edison Co.
1917-1918
122-64
122-64-204

M.B. 31-43

N. 120.502
E. 273.500

BARTOLO

Lot 39



Par. 2
TRACT NO. G-604
(GOV'T. PARCEL)
OR: 33776-263

M.B. 30-72

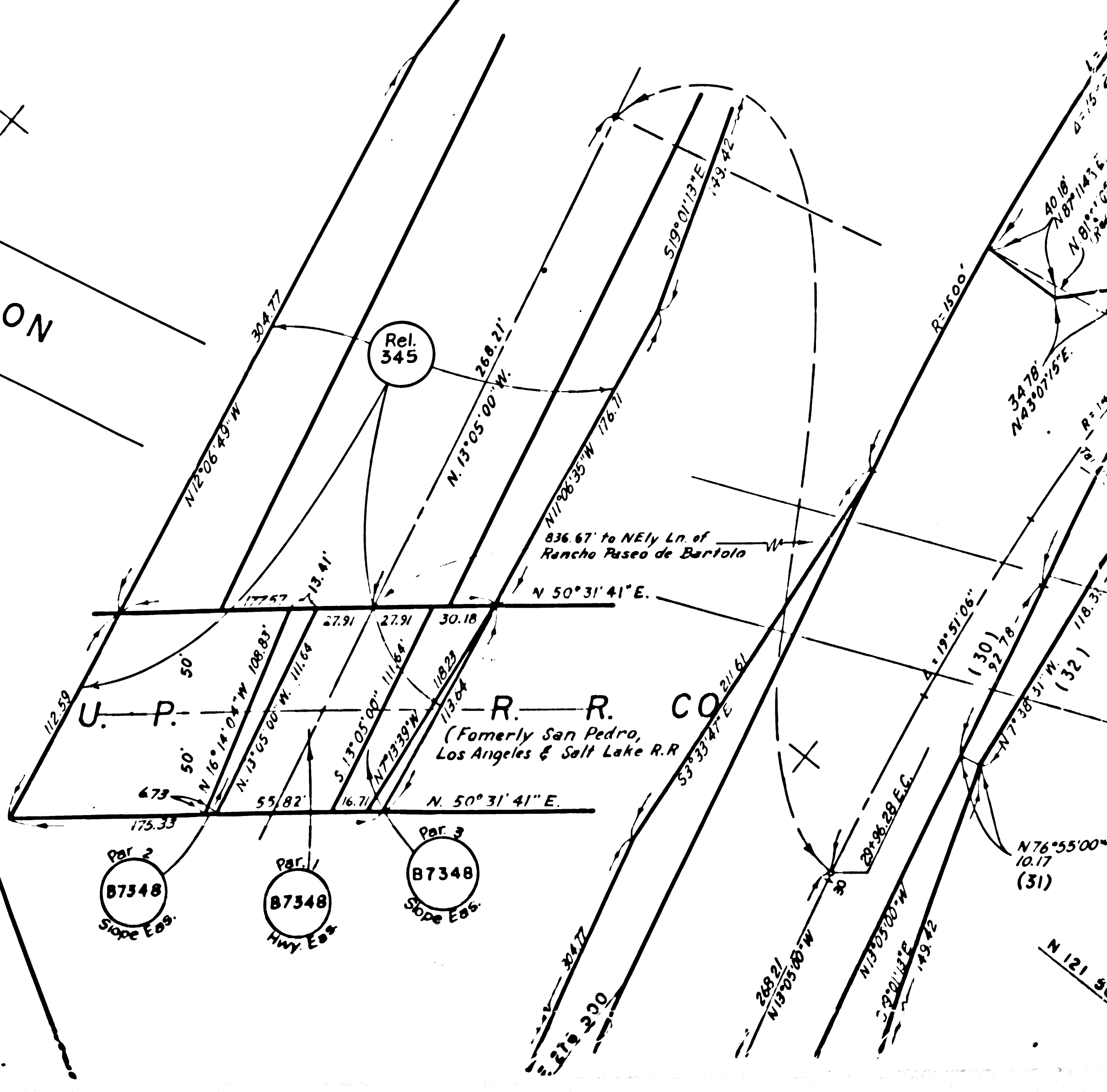
Lot 5

Lot 4

A4
FM 21293
OF A7

B. 31-43

F

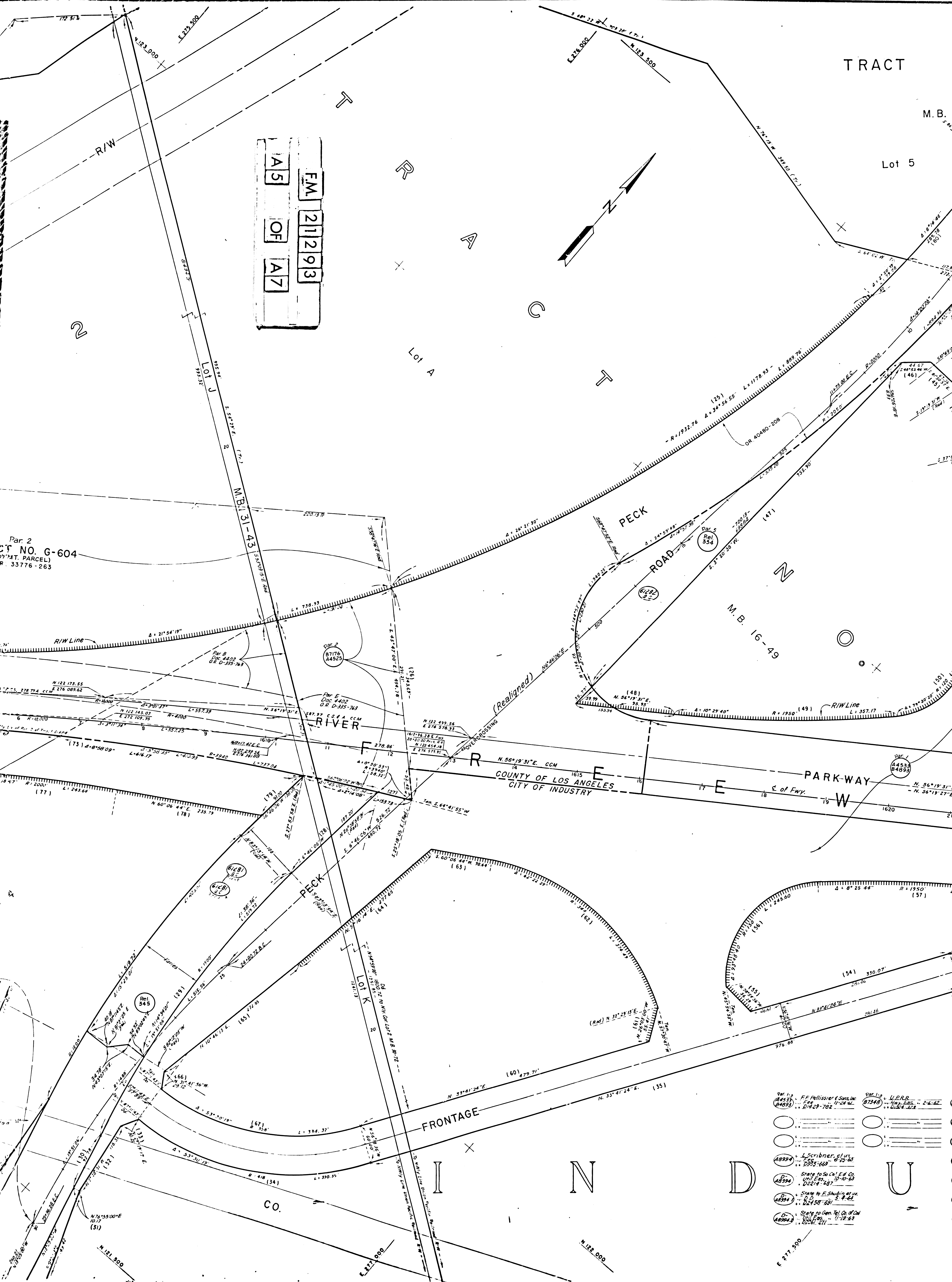
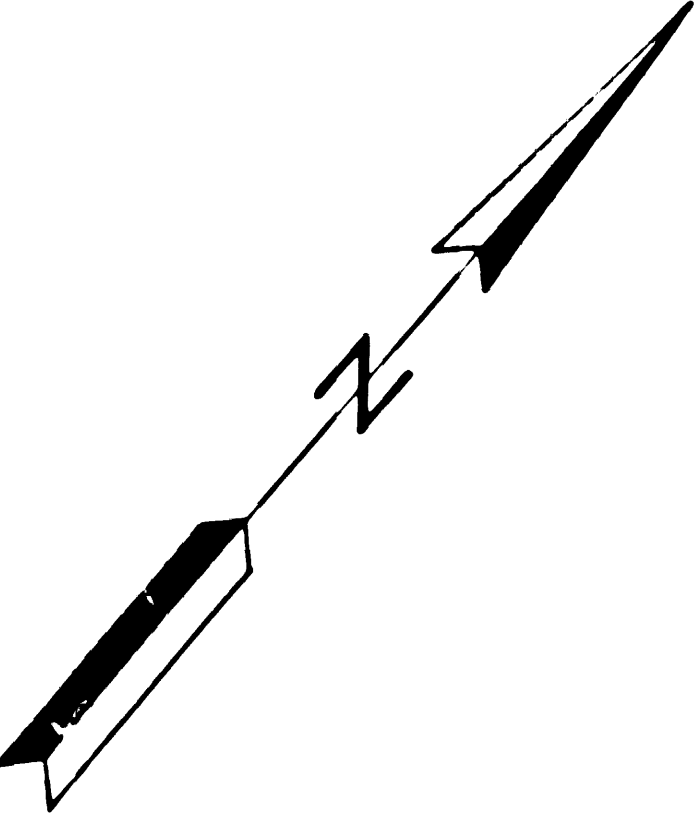


TRACT

M.B. 2

Lot 5

F.M. 211293
OF
A5 A7



Par. 2
CT NO. G-604
M.T. PARCEL
R. 33776-263

Par. E
Doc. 402
OR D-325-763
C.C.A. CCM
RIVER

County of Los Angeles
City of Industry

Parkway
E. of Fwy.

Par. 1-2 A453 B483	FF Pellissier & Sons Inc 11-24-61 D-782-782	Par. 1-3 B7340	U.P.R. 11-24-61 D-782-782
A899	L. Scribner, et al 8-25-60 D-935-663		
D-18994	State to So Cal. Ed. Co. 10-10-63 D-2474-631		
A894	State to E. Shubin et al 3-4-64 D-2458-631		
D-18994	State to Gen. Tel. Co. of Cal. 11-19-63 D-2458-631		

TRACT NO. 2377

LA PUENTE MILL PROPERTY
D.M. 88 - 10, 11

M.B. 23-107

Lot 5

Lot 5

COUNTY OF LOS ANGELES
CITY OF INDUSTRY

PROPOSED KELLA AVE.

Lot A

CITY OF INDUSTRY

COUNTY OF LOS ANGELES

KATHLEEN ST.

PEARSON ST.

KAYDEE ST.

PARKWAY

E. of Fwy.

17 18 19 20 21 22 23 24 25 26 27 28 29 30 31

Lot A

F.M. 212293
OF
A6
A7

D

U

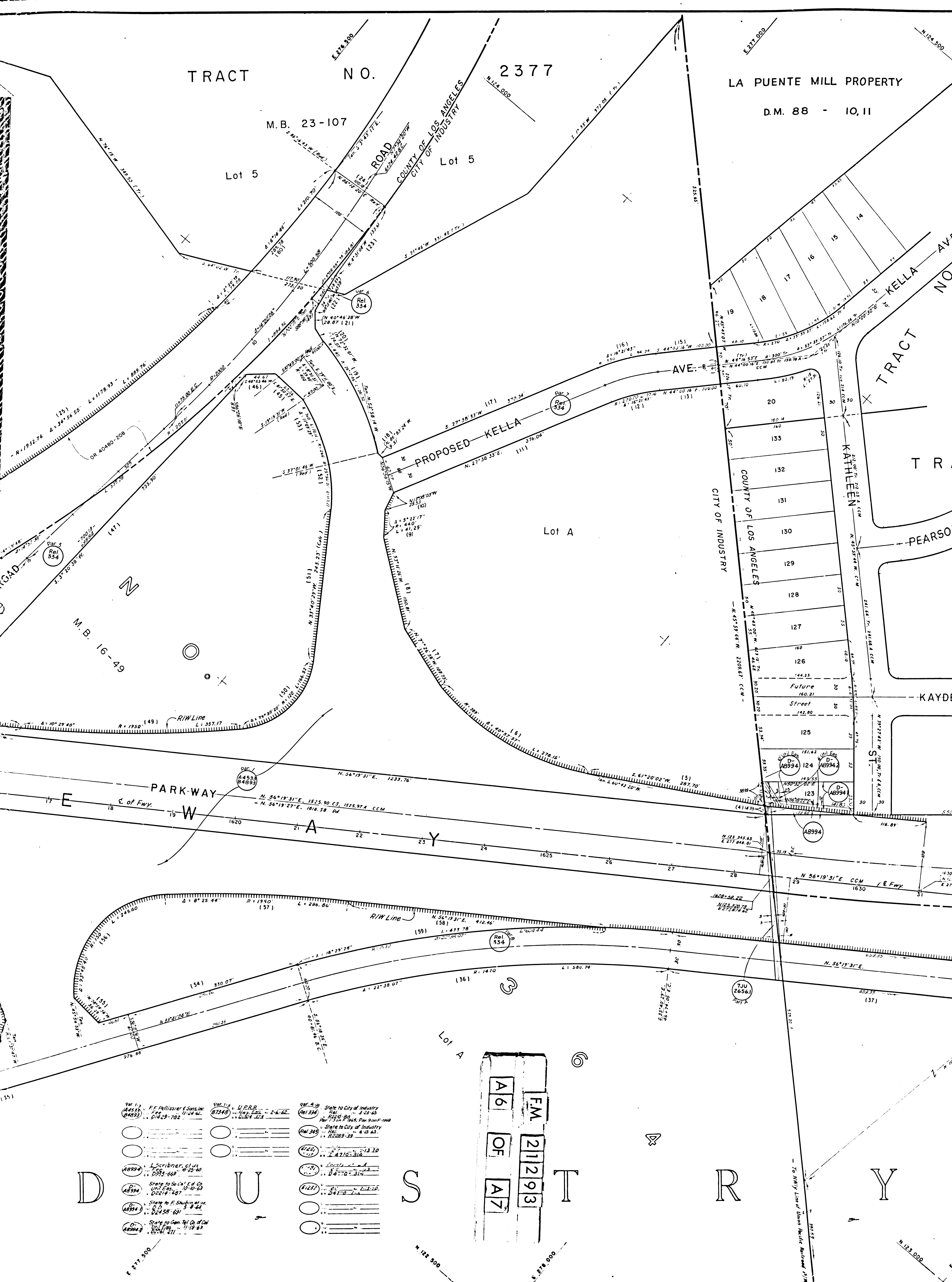
S

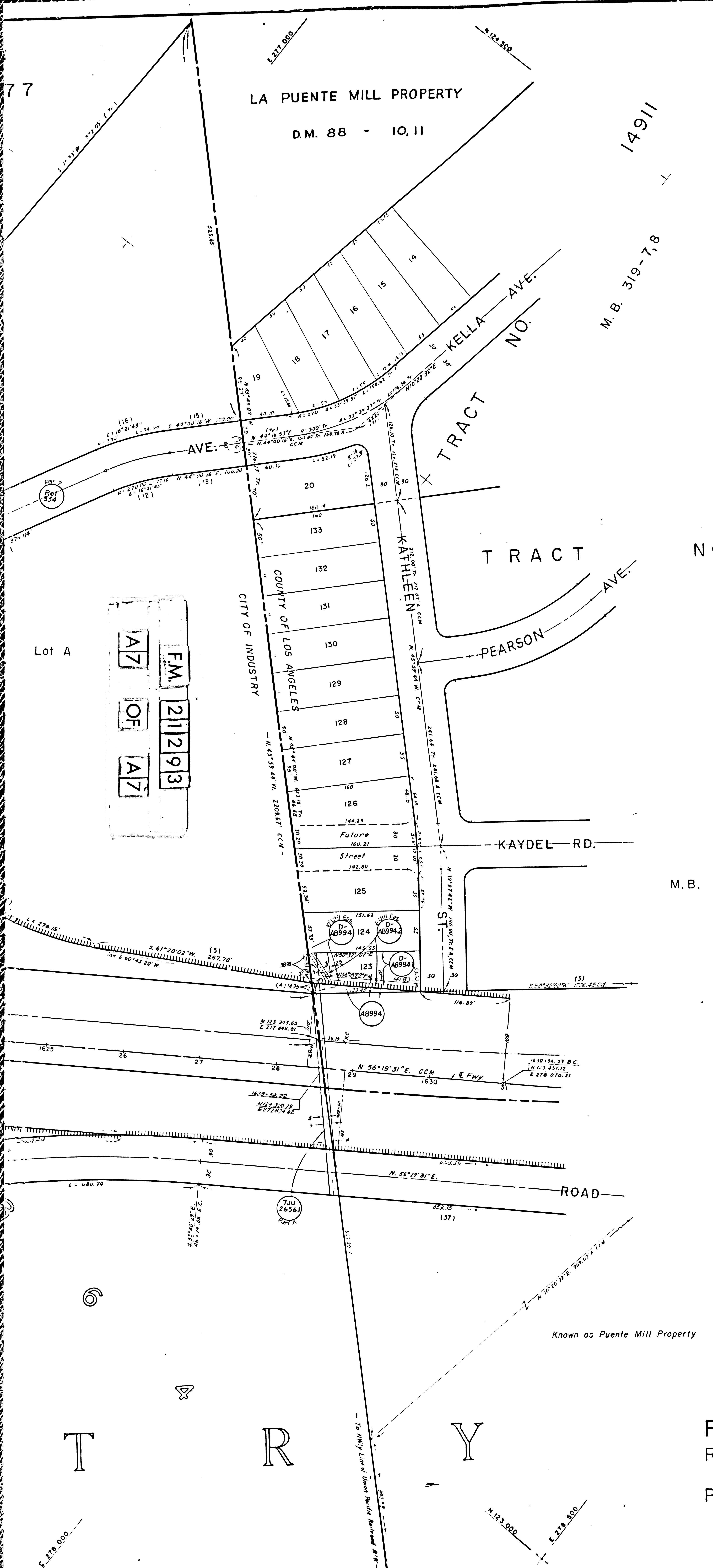
T

R

Y

- Par. 1-3 FF Pellissier & Sons, Inc. (84533) Dec. 29-1922
- Par. 1-3 U.P.R.R. (87348) Inv. Exp. 2-6-62
- Par. 1-3 State to City of Industry (Rel. 334) 3-23-65
- Par. 1-3 State to City of Industry (Rel. 334) 4-15-65
- Par. 1-3 State to City of Industry (Rel. 334) 5-13-70
- Par. 1-3 State to City of Industry (Rel. 334) 8-7-70
- Par. 1-3 State to City of Industry (Rel. 334) 2-24-70
- Par. 1-3 Scribner, S.J. (A8994) D.M. 88-10-11
- Par. 1-3 State to City of Industry (Rel. 334) 10-10-63
- Par. 1-3 State to F. Shubert, et al. (A8994) 5-8-64
- Par. 1-3 State to Gen. Tel. Co. of Cal. (A8994) 11-19-63
- Par. 1-3 U.P.R.R. (87348) Inv. Exp. 2-6-62
- Par. 1-3 State to City of Industry (Rel. 334) 3-23-65
- Par. 1-3 State to City of Industry (Rel. 334) 4-15-65
- Par. 1-3 State to City of Industry (Rel. 334) 5-13-70
- Par. 1-3 State to City of Industry (Rel. 334) 8-7-70
- Par. 1-3 State to City of Industry (Rel. 334) 2-24-70





LA PUENTE MILL PROPERTY
D.M. 88 - 10, 11

14911
M.B. 319-7,8

NO. 13853

F.M. 20069-2
F-1788

M.B. 305-26/29

FOR CONTINUATION SEE MAP NO. F-1966

INTERSTATE
NOT TO BE TAKEN FROM DISTRICT OFFICE
COORDINATES SHOWN ARE FOR INTERNAL USE OF THE DIVISION OF HIGHWAYS AND ARE TO BE USED FOR REFERENCE ONLY

STATE OF CALIFORNIA
TRANSPORTATION AGENCY
DEPARTMENT OF PUBLIC WORKS
DIVISION OF HIGHWAYS
ROAD: 7-LA-605
(Old 7-LA-170-B, ldy.)

RIGHT OF WAY RECORD MAP
ROSE HILLS RD. (CLIOTA ST.) PM 15.6
POMONA FWY. (KATHLEEN ST.) PM 17.4

