

F.M. 21294
 A1 OF A7

FOR CONTINUATION SEE MAP NO. F-1788
 F.M. 20069-2

SOUTHERN

DEPARTMENT

CALIF.

EDISON

WATER

CALIF.

SAN

CO.

8

T

C

A

R

L

2

200.7

200.7

200.7

200.7

200.7

200.7

200.7

200.7

200.7

200.7

200.7

200.7

200.7

200.7

200.7

200.7

portion
of
LOT

F.M. 21294

A2 OF A7

X

B

M

21294 F.M. 21294
ABB
4709
6000
D.C. 11/15/26

LOS

ANGELES

ALIF.

EDISON

POWER

GABRIEL

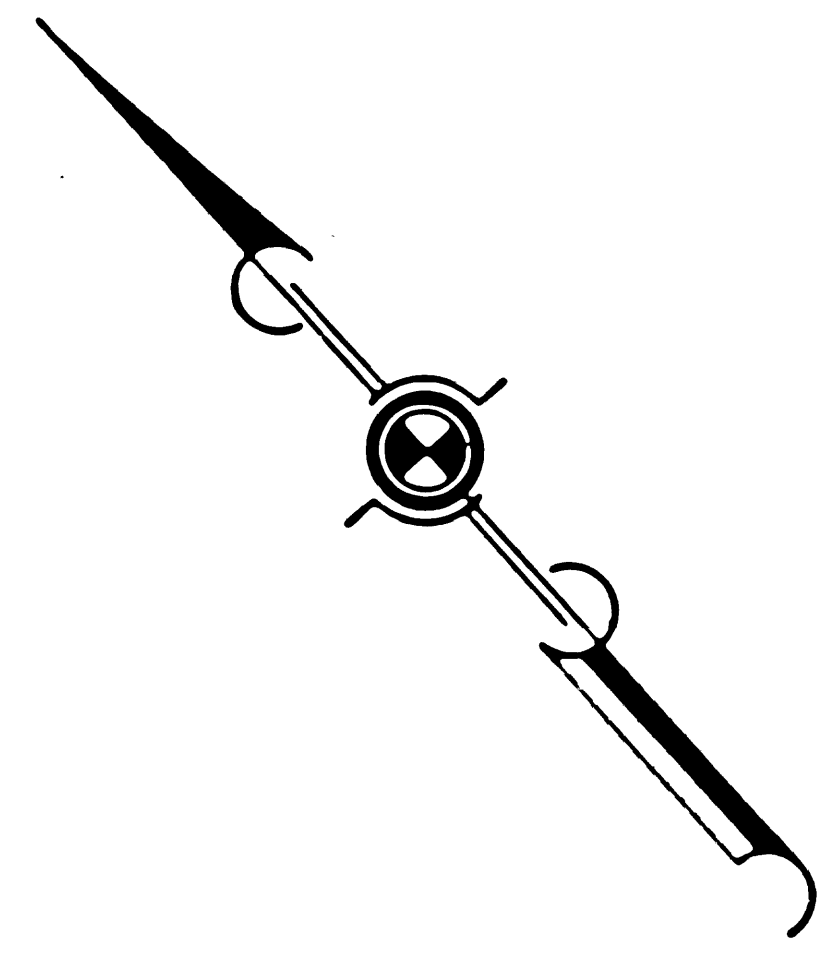
CO.

DEPARTMENT

101

23

F.M.	21294
A3	OF A7



135775
 TRACT LINE
 Prolongation of E KLINGERMAN ST.

1878
 3478
 13062
 5062

M. & M. 12. 12. 52. 11
 N 25° 12' 45" E
 1201 + 35.45 BC

N 48° 01' 46" E

R. 1/2 1/2

2 = 10° 57' 20"

82.682 + 7

82.362 + 1.0

82.362 + 1.0

82.362 + 1.0

82.362 + 1.0

82.362 + 1.0

82.362 + 1.0

82.362 + 1.0

82.362 + 1.0

82.362 + 1.0

82.362 + 1.0

82.362 + 1.0

82.362 + 1.0

82.362 + 1.0

82.362 + 1.0

82.362 + 1.0

B.

X

X

X

(A) 1651

125

125

125

125

125

125

125

125

125

125

125

D 182° 57' 17"

Most 5 1/4 Cor. Per. 6
 OR 54082-404

M. & M. 12. 12. 52. 11
 N 25° 12' 45" E
 1201 + 35.45 BC

M. & M. 12. 12. 52. 11
 N 25° 12' 45" E
 1201 + 35.45 BC

M. & M. 12. 12. 52. 11
 N 25° 12' 45" E
 1201 + 35.45 BC

M. & M. 12. 12. 52. 11
 N 25° 12' 45" E
 1201 + 35.45 BC

M. & M. 12. 12. 52. 11
 N 25° 12' 45" E
 1201 + 35.45 BC

M. & M. 12. 12. 52. 11
 N 25° 12' 45" E
 1201 + 35.45 BC

M. & M. 12. 12. 52. 11
 N 25° 12' 45" E
 1201 + 35.45 BC

M. & M. 12. 12. 52. 11
 N 25° 12' 45" E
 1201 + 35.45 BC

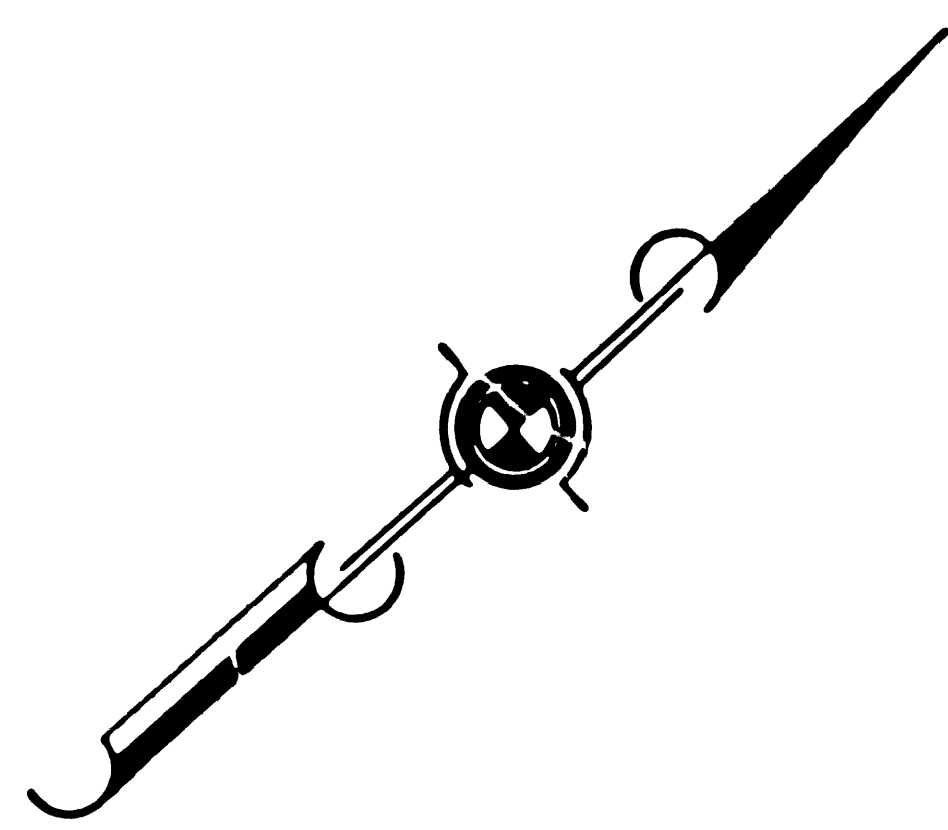
M. & M. 12. 12. 52. 11
 N 25° 12' 45" E
 1201 + 35.45 BC

M. & M. 12. 12. 52. 11
 N 25° 12' 45" E
 1201 + 35.45 BC

M. & M. 12. 12. 52. 11
 N 25° 12' 45" E
 1201 + 35.45 BC

M. & M. 12. 12. 52. 11
 N 25° 12' 45" E
 1201 + 35.45 BC

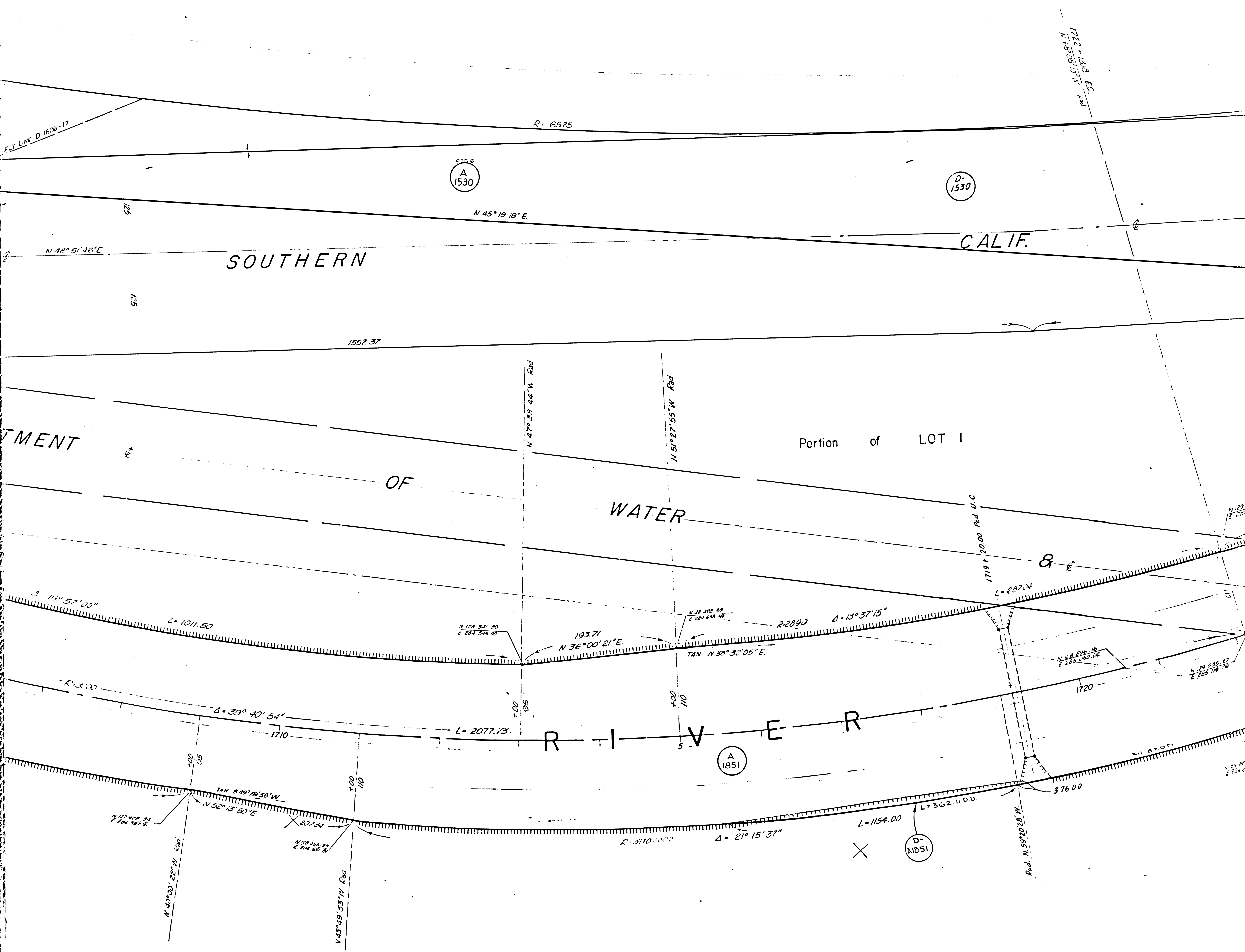
F.M. 211294
A4 OF A7



C O U N T Y

F L O O D

C O M



F.M. 2112914
 A5 OF A7

CONTROL

DISTRICT

SOUTHERN

EDISON

CO.

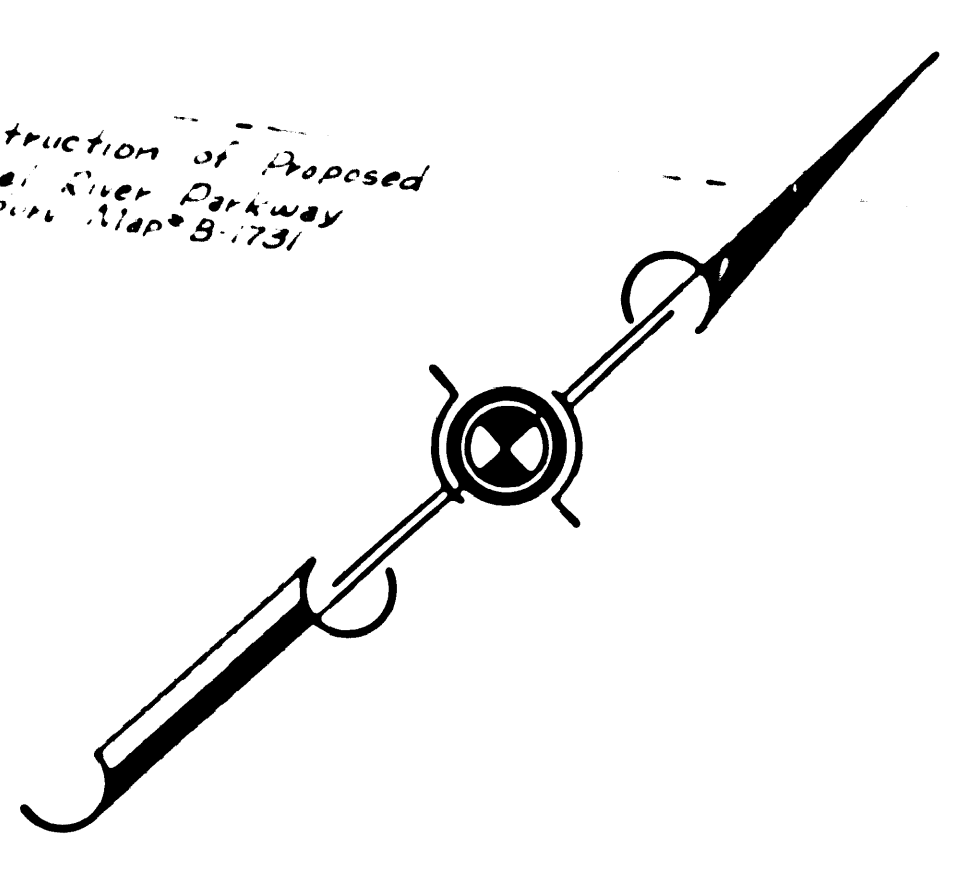
FREEWAY

POWER

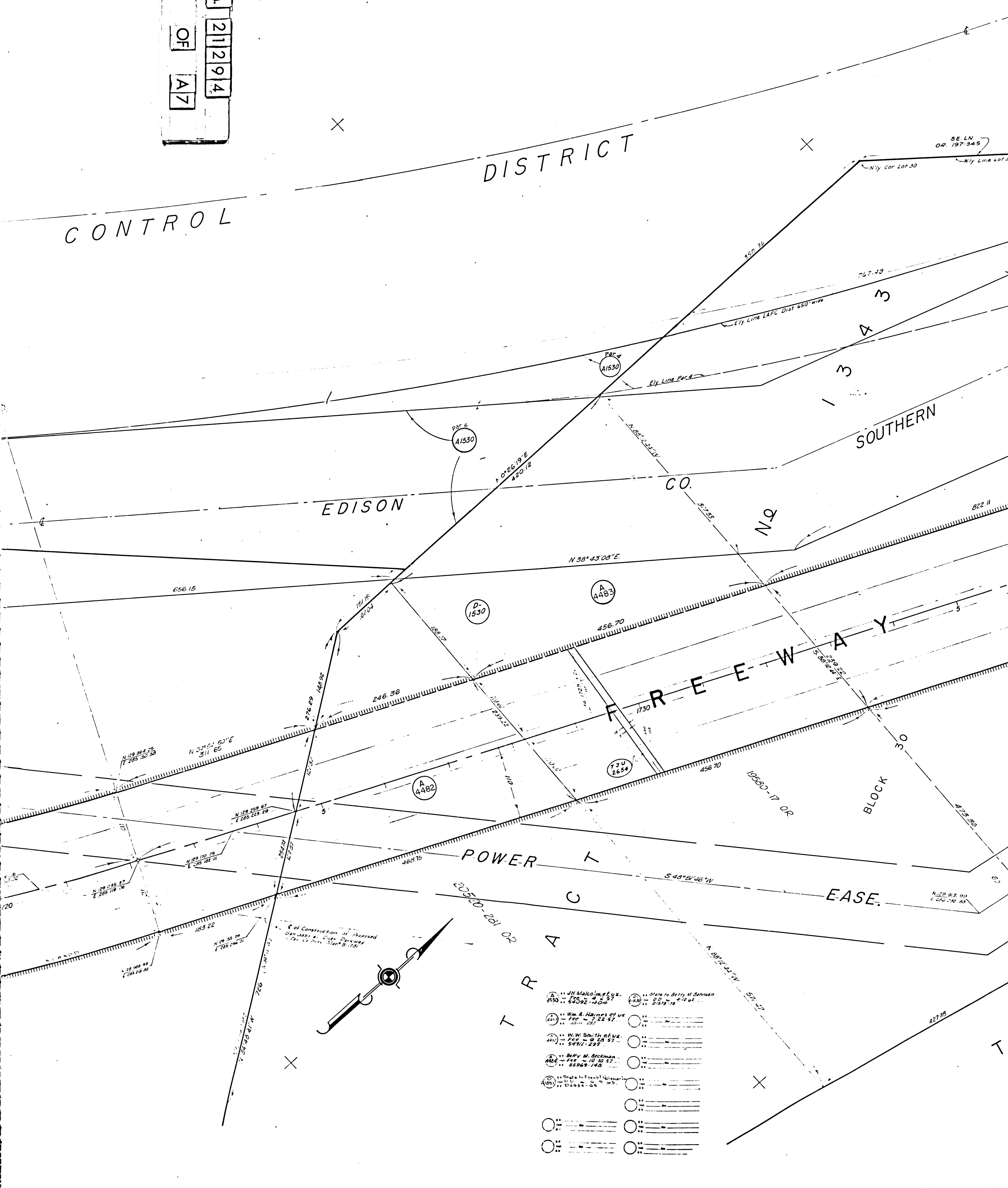
TRACK

EASE.

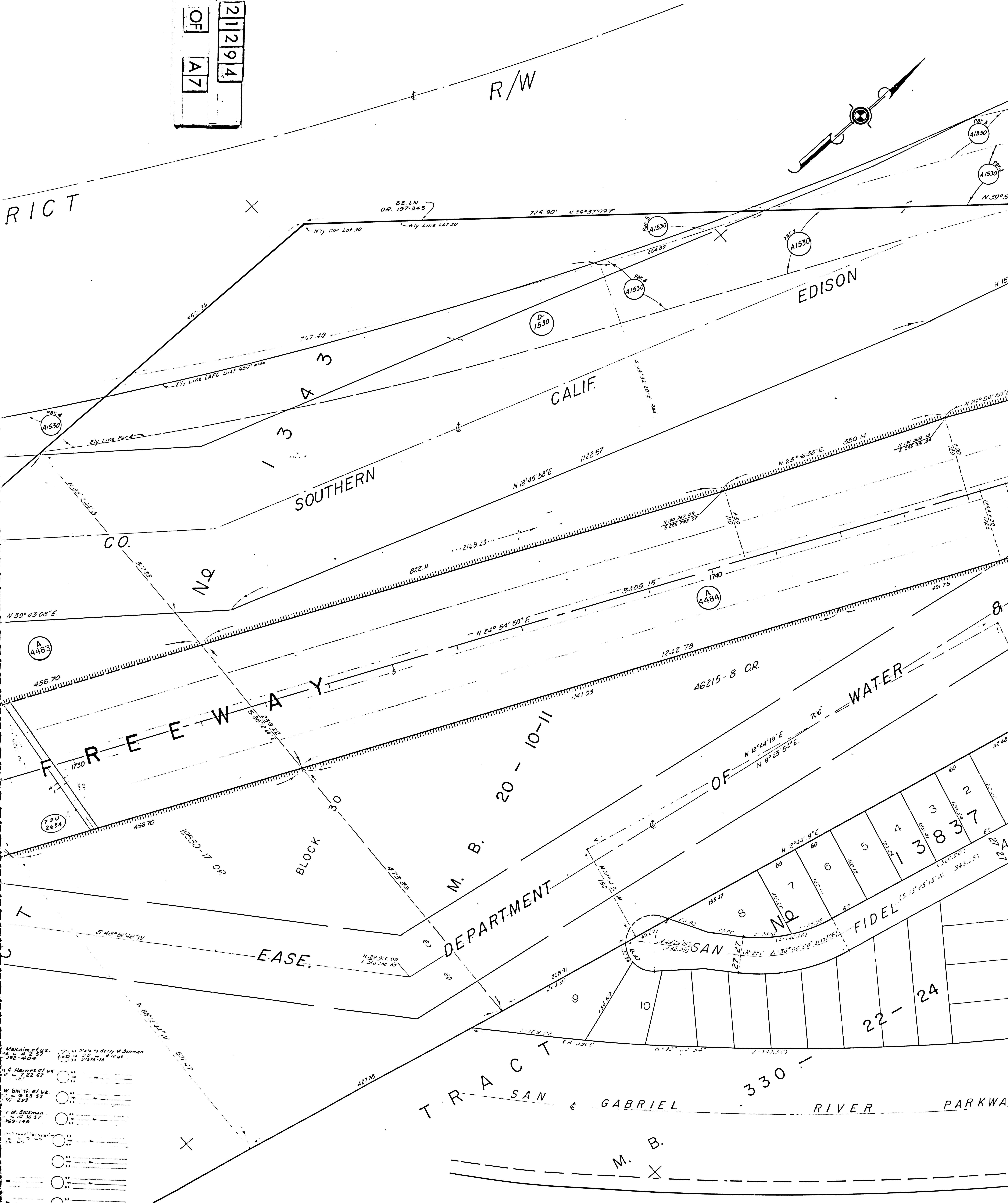
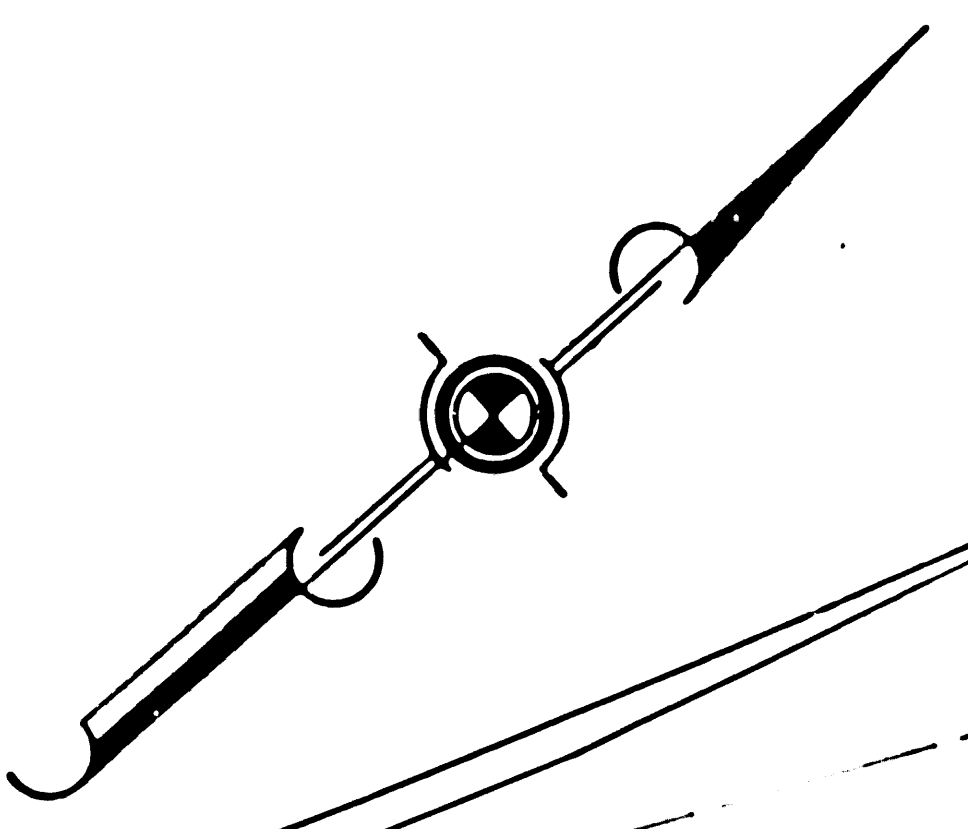
BLOCK



- 1530 JH Malco, et ux. Sec. 10, 12, 14, 16, 18, 20, 22, 24, 26, 28, 30, 32, 34, 36, 38, 40, 42, 44, 46, 48, 50, 52, 54, 56, 58, 60, 62, 64, 66, 68, 70, 72, 74, 76, 78, 80, 82, 84, 86, 88, 90, 92, 94, 96, 98, 100, 102, 104, 106, 108, 110, 112, 114, 116, 118, 120, 122, 124, 126, 128, 130, 132, 134, 136, 138, 140, 142, 144, 146, 148, 150, 152, 154, 156, 158, 160, 162, 164, 166, 168, 170, 172, 174, 176, 178, 180, 182, 184, 186, 188, 190, 192, 194, 196, 198, 200, 202, 204, 206, 208, 210, 212, 214, 216, 218, 220, 222, 224, 226, 228, 230, 232, 234, 236, 238, 240, 242, 244, 246, 248, 250, 252, 254, 256, 258, 260, 262, 264, 266, 268, 270, 272, 274, 276, 278, 280, 282, 284, 286, 288, 290, 292, 294, 296, 298, 300, 302, 304, 306, 308, 310, 312, 314, 316, 318, 320, 322, 324, 326, 328, 330, 332, 334, 336, 338, 340, 342, 344, 346, 348, 350, 352, 354, 356, 358, 360, 362, 364, 366, 368, 370, 372, 374, 376, 378, 380, 382, 384, 386, 388, 390, 392, 394, 396, 398, 400, 402, 404, 406, 408, 410, 412, 414, 416, 418, 420, 422, 424, 426, 428, 430, 432, 434, 436, 438, 440, 442, 444, 446, 448, 450, 452, 454, 456, 458, 460, 462, 464, 466, 468, 470, 472, 474, 476, 478, 480, 482, 484, 486, 488, 490, 492, 494, 496, 498, 500, 502, 504, 506, 508, 510, 512, 514, 516, 518, 520, 522, 524, 526, 528, 530, 532, 534, 536, 538, 540, 542, 544, 546, 548, 550, 552, 554, 556, 558, 560, 562, 564, 566, 568, 570, 572, 574, 576, 578, 580, 582, 584, 586, 588, 590, 592, 594, 596, 598, 600, 602, 604, 606, 608, 610, 612, 614, 616, 618, 620, 622, 624, 626, 628, 630, 632, 634, 636, 638, 640, 642, 644, 646, 648, 650, 652, 654, 656, 658, 660, 662, 664, 666, 668, 670, 672, 674, 676, 678, 680, 682, 684, 686, 688, 690, 692, 694, 696, 698, 700, 702, 704, 706, 708, 710, 712, 714, 716, 718, 720, 722, 724, 726, 728, 730, 732, 734, 736, 738, 740, 742, 744, 746, 748, 750, 752, 754, 756, 758, 760, 762, 764, 766, 768, 770, 772, 774, 776, 778, 780, 782, 784, 786, 788, 790, 792, 794, 796, 798, 800, 802, 804, 806, 808, 810, 812, 814, 816, 818, 820, 822, 824, 826, 828, 830, 832, 834, 836, 838, 840, 842, 844, 846, 848, 850, 852, 854, 856, 858, 860, 862, 864, 866, 868, 870, 872, 874, 876, 878, 880, 882, 884, 886, 888, 890, 892, 894, 896, 898, 900, 902, 904, 906, 908, 910, 912, 914, 916, 918, 920, 922, 924, 926, 928, 930, 932, 934, 936, 938, 940, 942, 944, 946, 948, 950, 952, 954, 956, 958, 960, 962, 964, 966, 968, 970, 972, 974, 976, 978, 980, 982, 984, 986, 988, 990, 992, 994, 996, 998, 1000
- 1530 State of Betty, et Jensen
- 1530 Wm. A. Haynes et ux
- 1530 W.W. Smith et ux
- 1530 Betty M. Beckman
- 1530 State of Frank

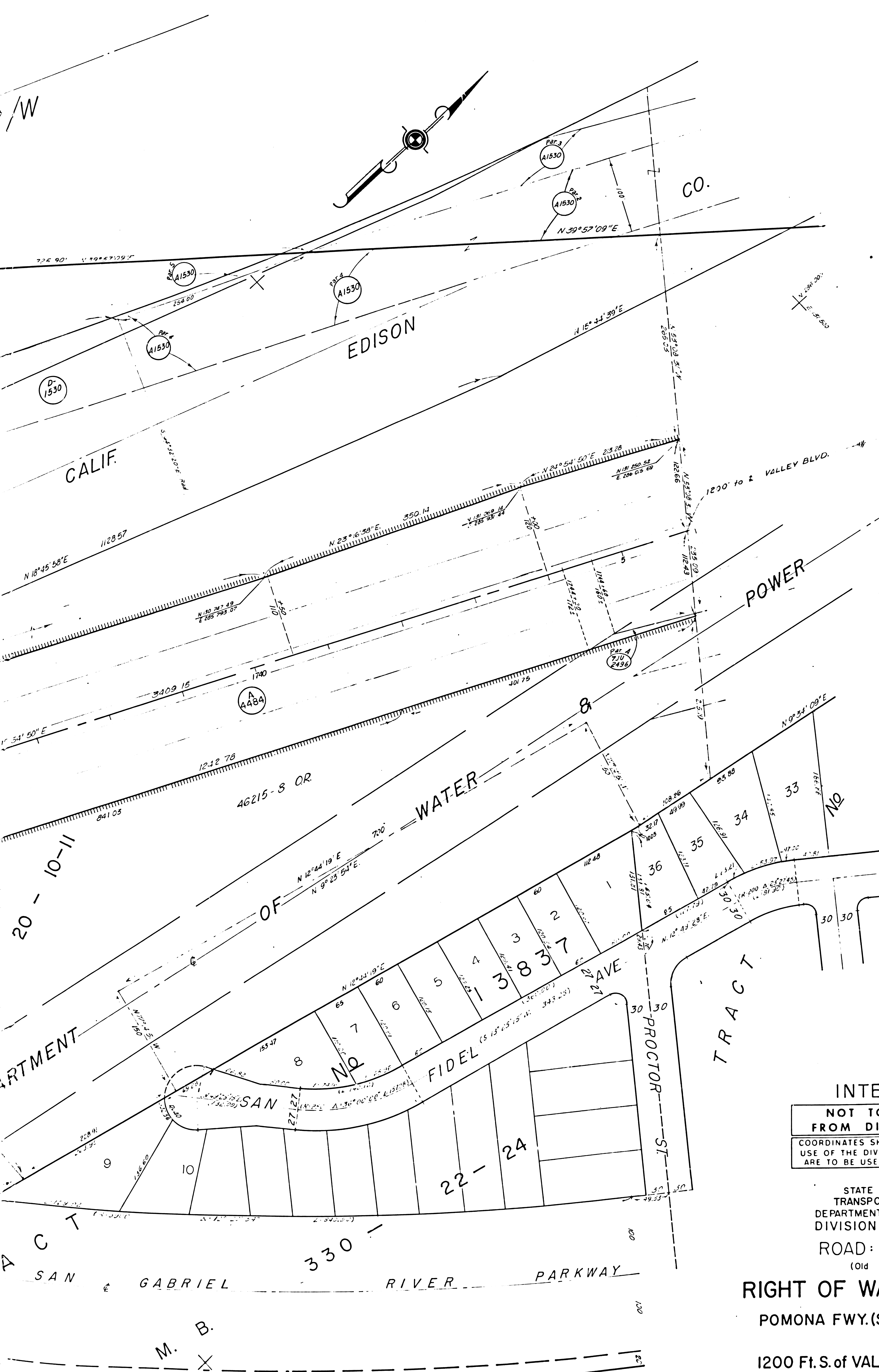


F.M. 21294
 OF 1A7



- Malcolm et ux. 592-4257
- A. Haynes et ux. 722-57
- W. Smith et ux. 628-57
- M. Beckman 10-30-57

F.M. 21294
OF 17



MAP NO. F-1968
FOR CONTINUATION SEE

INTERSTATE
NOT TO BE TAKEN
FROM DISTRICT OFFICE
COORDINATES SHOWN ARE FOR INTERNAL
USE OF THE DIVISION OF HIGHWAYS AND
ARE TO BE USED FOR REFERENCE ONLY

STATE OF CALIFORNIA
TRANSPORTATION AGENCY
DEPARTMENT OF PUBLIC WORKS
DIVISION OF HIGHWAYS
ROAD: 7- LA-605
(Old 7- LA-170-B)

RIGHT OF WAY RECORD MAP
POMONA FWY. (San Jose Cr.) (PM 17.41)
to
1200 Ft. S. of VALLEY BLVD. (PM 19.41)

0 50 100 200 250
F-1967

F.M. 21294