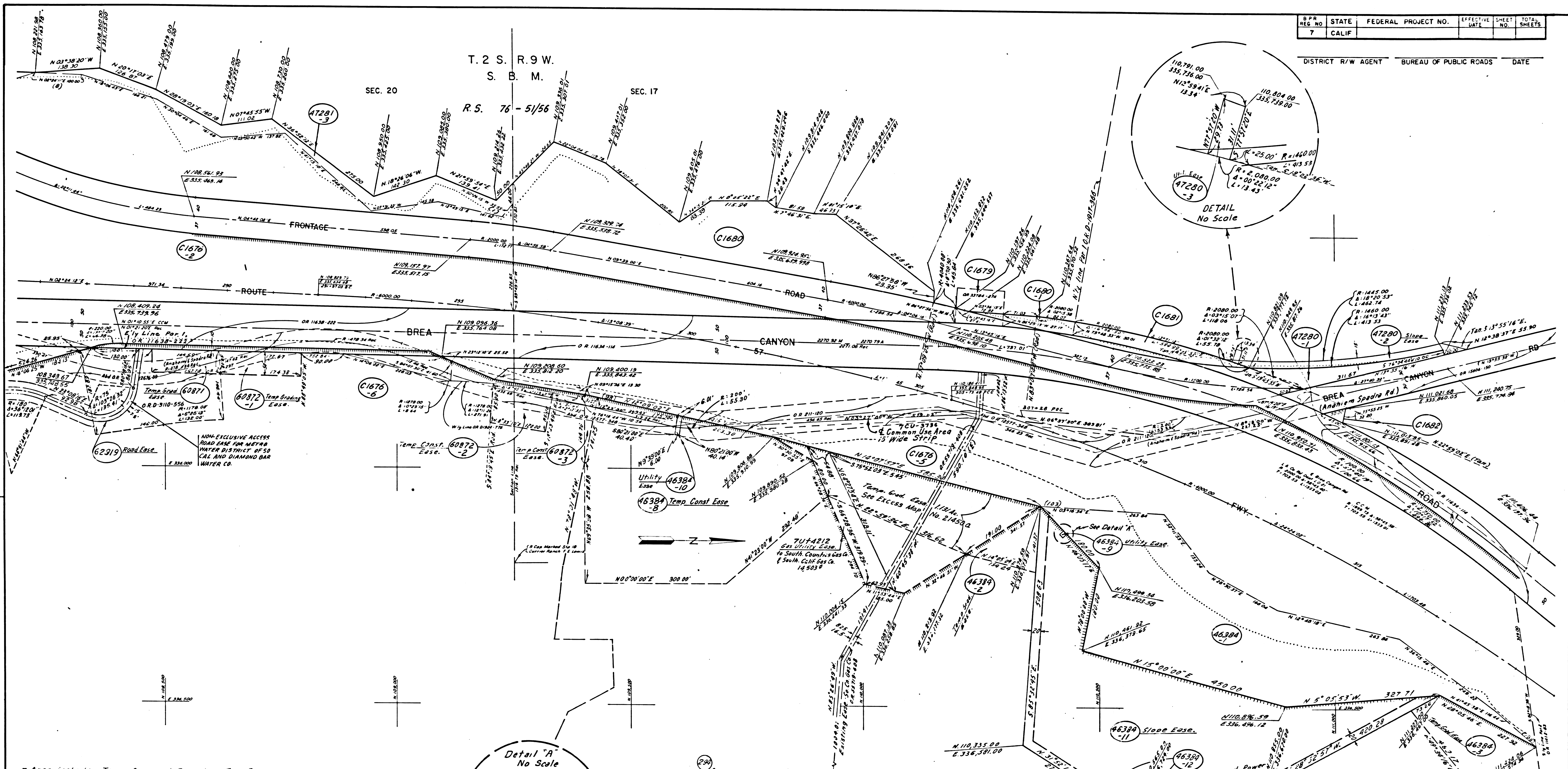


S.P.A. REG. NO.	STATE	FEDERAL PROJECT NO.	EFFECTIVE DATE	SHEET NO.	TOTAL SHEETS
7	CALIF.				

DISTRICT R/W AGENT BUREAU OF PUBLIC ROADS DATE



Area includes Tempo. Overhead Power Line Easement.

PARCEL NO.	GRANTOR OR GRANTEE	AREA *		INST.	RECORDING DATA	
		TO BE ACQUIRED	EXCESS TOTAL		DATE	O.R.
46384-2	Transamerica Devel. Co.	10.753		Easement		
46384-3	See Map No 15347-C			Easement		
46384-8	Transamerica Devel. Co.	3.531 Ac.		Easement		
46384-9	Diamond Bar Devel. Corp.	100		Easement	10-19-70	D4863-222
46384-10	"	242		Easement	"	"
46384-11	"	4,464 Ac.		Easement	"	"
60871-2	"	28,169		Temp. Const. Easement	"	"
60871	Diamond Bar Water Co.	7,307	1,098 Ac.	Temp. Const. Easement		
60872-1	Robinhood Const. Co.	8,796		Temp. Const. Easement		
60872-2	"	10,688		Temp. Const. Easement		
60872-3	"	2,189		Temp. Const. Easement		
62319	Diamond Bar Water Co.	3,095	1,098 Ac.	Temp. Const. Easement	2-25-72	5365-535

Excess Area includes Easement Areas.

PARCEL NO.	GRANTOR OR GRANTEE	AREA *		INST.	RECORDING DATA	
		TO BE ACQUIRED	EXCESS TOTAL		DATE	O.R.
C1676-2	See Map # 19604-C					
C1676-5	Transamerica Devel. Co.	563,320	1,744 Ac.	929,000 Ac. Fee	7-23-64	D2560-306
C1676-6	"	6,099		Easement	"	"
C1679	So. Counties Gas Co.	2,748		Fee	3-28-69	D4321-309
C1680	S.L. Bartholomae	217,043		133,284 Ac. Cont.	11-22-71	D5265-449
C1680-1	"	4,430		Cont.	11-22-71	D5265-449
C1681	Duke Devel. Co.	13,182		2,221,533 Fee	6-9-64	D2502-159
C1682	F.B. McMillan	708		7,811 Ac. Fee	5-19-64	D2476-127
46384-1	Diamond Bar Devel. Co.	3,953 Ac.		Fee	10-19-70	D4863-222
47280-1	Kagan, et ux.	8,578		Fee	2-2-70	D4622-221
47280-2	"	7,180		Fee	"	"
47281-3	Transamerica Devel. Co.	28,561		Fee	10-19-70	D4863-222
47280-3	Kagan, et ux.	405		Util. Easement	2-2-70	D4622-221

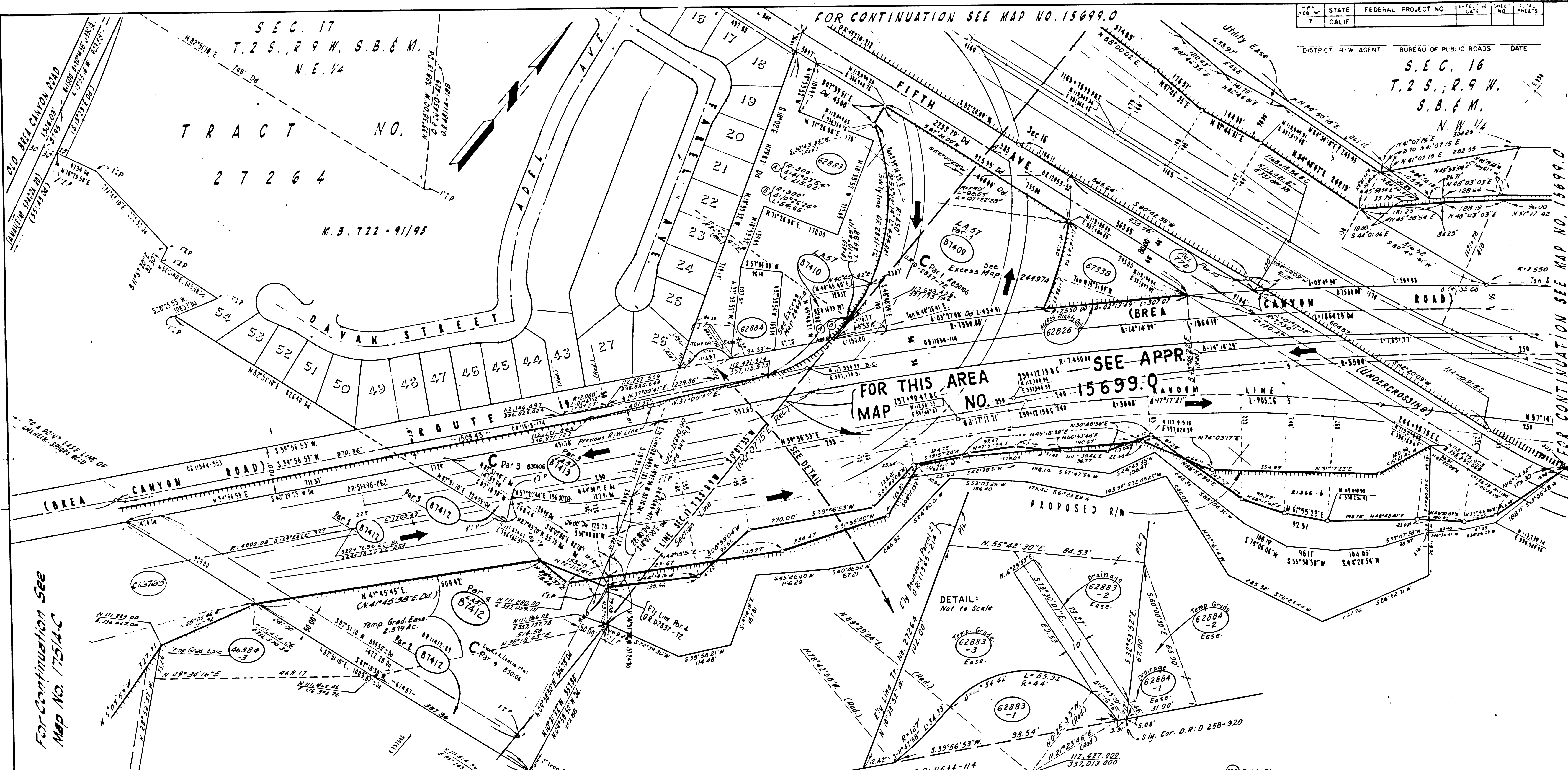
REV. BY	DAI.	DATE
D.A.M.		10-19-67
R.S.		11-6-68
O.Y.F.		12-6-68
O.Y.F.		1-8-69
O.Y.F.		1-9-69
N.A.B.		5-15-69
N.A.B.		7-23-69
N.A.B.		7-30-69
N.A.B.		6-12-72
N.A.B.		7-2-70
F.P.		10-20-70

STATE OF CALIFORNIA
 TRANSPORTATION AGENCY DEPARTMENT OF PUBLIC WORKS
 DIVISION OF HIGHWAYS
 07-LA-57 R.3.7
APPRAISAL MAP
 1400' N PATHFINDER RD. TO 2400' S FIFTH AVE.
 SCALE 1" = 100'
 DRAFT D.A.M.
 RWPE F.H.M.
 FILE NO. 19606-C
 DATE 9-19-67
 APPROVED H.N.W.

ACCESS DENIAL LINE TOP OF CUT TOE OF FILL
 LEGEND: UNLESS OTHERWISE NOTED ALL AREAS ARE IN SQUARE FEET
 IF MORE THAN ONE BEARING AND DISTANCE ARE SHOWN FOR A LINE,
 THE ONE IN PARENTHESES IS PREVIOUS RECORD

F.M. 21302-1

S.E.C. 16
T.2 S., R.9 W.
S.B. & M.
N.W. 1/4



For Continuation See Map No. 17514-C

FOR CONTINUATION SEE MAP NO. 15699.0

Includes Area of Drainage Easement.

PARCEL NO.	GRANTOR OR GRANTEE	AREA*			INST.	RECORDING DATA		PARCEL NO.	GRANTOR OR GRANTEE	AREA*			INST.	RECORDING DATA	
		TO BE ACQUIRED	EXCESS	TOTAL		DATE	O.R.			TO BE ACQUIRED	EXCESS	TOTAL		DATE	O.R.
87409	LUCILLE A LANCIA, et al	124.672		124.672	2ND	8-18-65	D2837-72								
87410	JAMES AMUNDAR, et ux	150.61	8.501	159.111	FEF	12-26-65	D2779-828								
87412	LUCILLE A LANCIA, et al	348.069	3.970	352.039	COND	3-18-65	D2837-72								
87413	LUCILLE A LANCIA, et al	56.359		56.359	COND	3-18-65	D2837-72								
463843	Transamerica Dev Co.	9.958		9.958	Acc										
62826	LUCILLE A LANCIA, et al				Access										
62883-1	G & L LANCIA	1,932		1,932	Fee	9-22-71	D5198-986								
62883-2	"	746		746	Ease	9-22-71	D5198-986								
62883-3	"	5,895		5,895	Temp										
62884-1	D. C. Coats, ex ux	17		17	Ease	9-30-71	D5208-335								
62884-2	"	392		392	Temp										
701772	Shore to L.A. Co.				Rel.	3-1-71	R3390-081/089								
67338	Lucille A Lancia, et al	26,308		26,308	Fee										

REVISION DATES

REV. BY	DATE	REV. BY	DATE
H. LEE	8-19-65		
K.S.	11-6-69		
H.A.S.	7-22-69		
L.C.S.	7-2-70		
E.P.	9-4-70		
E.P.	9-15-70		
L.D.S.	3-12-71		
M.V.	7-13-71		
E.P.	9-23-71		

STATE OF CALIFORNIA
TRANSPORTATION AGENCY DEPARTMENT OF PUBLIC WORKS
DIVISION OF HIGHWAYS
OF LAST/LAGO-45/235
APPRAISAL MAP
FIFTH AVE TO DIAMOND BAR BLVD.
SCALE 1"=100' FILE NO. 15347-C
DRAFT H. LEE DATE 1-25-65
RWPE K. DUAN APPROVED R.W.N.

LEGEND: ACCESS DENIAL LINE TOP OF CUT TOE OF FILL
UNLESS OTHERWISE NOTED ALL AREAS ARE IN SQUARE FEET
IF MORE THAN ONE BEARING AND DISTANCE ARE SHOWN FOR A LINE, THE ONE IN PARENTHESES IS PREVIOUS RECORD