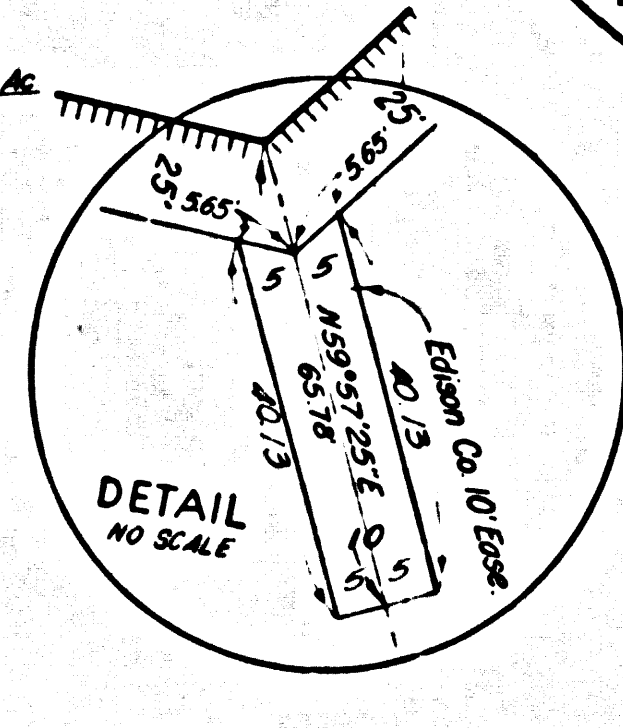
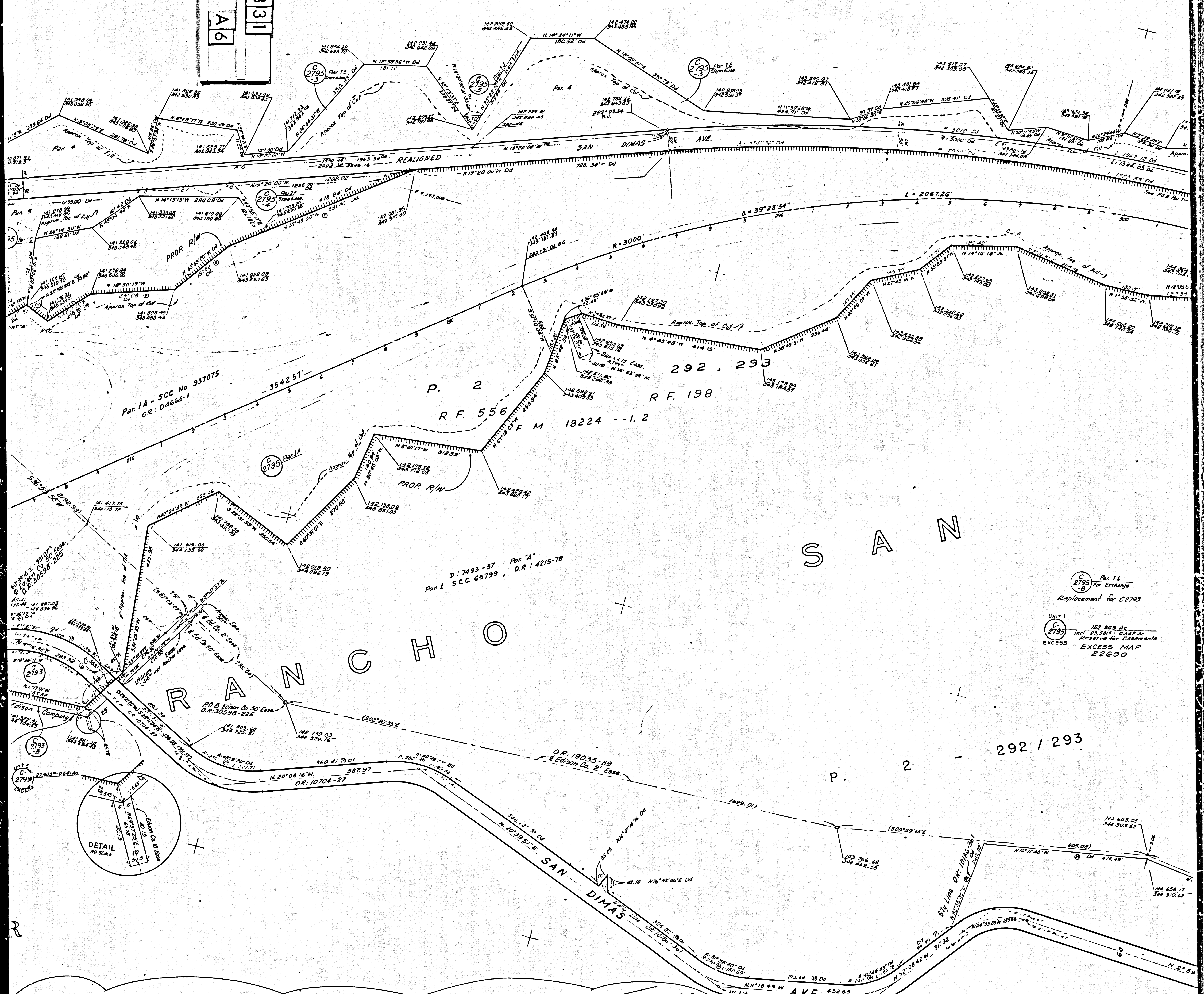


F.M. 21331
A1 OF A6

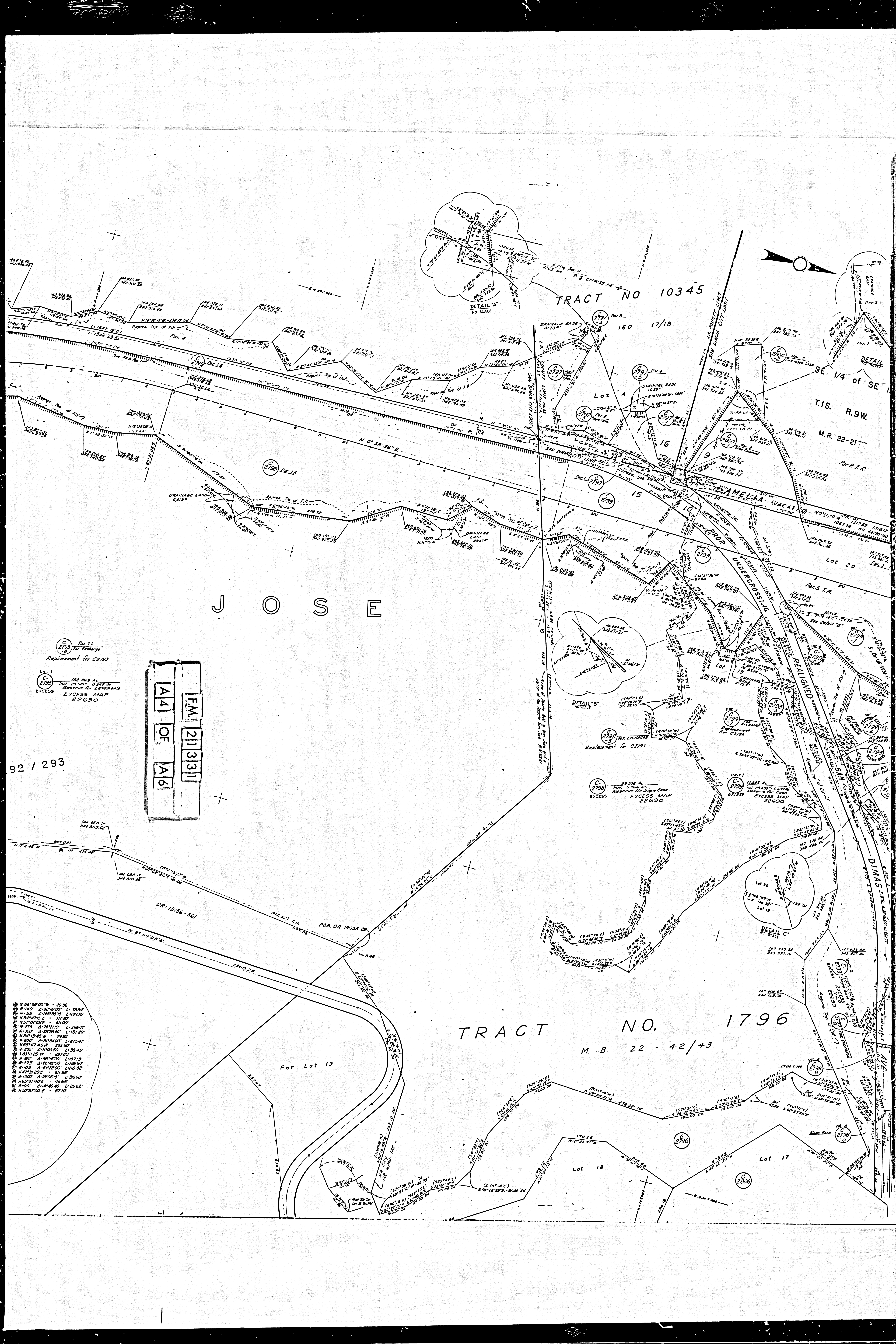
For Continuation of Access Rd
See Detail on Right

FM 21331
A3 OF A6



- 1. So. Calif Edison Co Access Rd
- ① R-1200 41° 20' 44" L-136.39'
- ② R-50 41° 02' 20" L-35.33'
- ③ S-34° 00' 00" E-215.59'
- ④ R-50 11° 17' 32" L-53.49'
- ⑤ S-84° 32' 28" W-00.09'
- ⑥ R-175 41° 29' 42" L-50.38'
- ⑦ W-121° 32' 00" W-74.17'
- ⑧ R-200 42° 25' 02" L-148.06'
- ⑨ S-35° 32' 40" W-52.44'
- ⑩ R-225 59° 09' 04" L-132.53'
- ⑪ S-84° 17' 30" W-96.54'
- ⑫ R-150 41° 57' 25" L-90.78'
- ⑬ S-74° 50' 04" W-54.04'
- ⑭ R-400 41° 31' 23" L-279.11'
- ⑮ R-174 42° 30' 00" W-119.20'
- ⑯ R-325 43° 39' 00" L-222.17'
- ⑰ N-49° 04' 00" E-37.00'
- ⑱ R-150 41° 54' 45" L-102.3'
- ⑲ N-43° 39' 15" E-231.25'
- ⑳ R-150 41° 54' 45" L-102.3'
- ㉑ N-21° 56' 15" E-51.53'
- ㉒ R-75 41° 53' 50" L-70.47'
- ㉓ R-100 41° 59' 30" L-103.05'
- ㉔ N-85° 23' 45" W-62.52'
- ㉕ R-163 41° 40' 00" L-136.93'
- ㉖ S-40° 28' 15" W-116.50'
- ㉗ R-150 41° 54' 45" L-102.3'
- ㉘ S-20° 44' 15" W-29.10'
- ㉙ R-100 41° 07' 05" L-21.10'
- ㉚ N-87° 10' 30" W-75.10'
- ㉛ R-100 41° 16' 48" L-29.52'
- ㉜ S-78° 10' 30" W-94.50'
- ㉝ R-300 41° 23' 36" L-123.61'
- ㉞ R-100 41° 16' 48" L-29.52'
- ㉟ R-100 41° 15' 12" L-23.05'
- ㊱ S-80° 25' 30" W-62.40'
- ㊲ R-150 41° 42' 45" L-111.92'
- ㊳ S-43° 40' 30" W-59.00'
- ㊴ R-200 41° 13' 17" L-46.40'
- ① S-58° 50' 00" W-20.36'
- ② R-140 41° 32' 16" L-78.94'
- ③ R-55 41° 45' 35" L-159.75'
- ④ S-54° 49' 15" E-117.20'
- ⑤ R-51 41° 05' 05" L-61.00'
- ⑥ R-475 41° 17' 07" L-366.47'
- ⑦ R-300 41° 25' 30" L-151.29'
- ⑧ R-54 41° 15' 45" W-79.50'
- ⑨ R-500 41° 54' 00" L-278.47'
- ⑩ R-160 41° 56' 16" L-157.13'
- ⑪ R-250 41° 20' 00" L-136.54'
- ⑫ R-103 41° 16' 22" L-110.52'
- ⑬ N-47° 31' 25" E-311.86'
- ⑭ R-100 41° 07' 05" L-61.00'
- ⑮ S-65° 37' 40" E-45.65'
- ⑯ R-100 41° 16' 48" L-29.52'
- ⑰ S-20° 57' 00" E-27.10'

PUDDINGSTONE RESERVOIR
DETAIL
Scale: 1"=200'



TRACT NO. 10345

TRACT NO. 1796

M. B. 22 - 42/43

J O S E

FM 21331
OF
A6

UNIT 1
C 2793
152.863 Ac.
Incl. 23.5811 & 244 Ac.
Reserve for Easements
EXCESS MAP 22690

92 / 293

- ① S 58°59'00" W - 20.36
- ② R 140° - 4.32'16"00" L 7004
- ③ R 155° - 4'45"35'15" L 4397.75
- ④ S 54°49'15" E - 117.80
- ⑤ N 51°01'05" E - 81.00
- ⑥ R 275° - 4'76"21"00" L 3664.7
- ⑦ R 300° - 0'28"53"00" L 151.29
- ⑧ N 54°13'45" W - 79.50
- ⑨ R 205° - 4'31'34"00" L 275.47
- ⑩ N 85°47'45" W - 233.00
- ⑪ R 200° - 0'11'00"50" L 36.45
- ⑫ S 83°11'25" W - 237.00
- ⑬ R 140° - 4'56'16"00" L 457.15
- ⑭ R 293° - 4'20'42"00" L 136.54
- ⑮ R 103° - 4'16'22"00" L 110.52
- ⑯ N 47°31'25" E - 31.85
- ⑰ R 100° - 4'18'08"15" L 315.98
- ⑱ R 203° - 31'40" E - 45.65
- ⑲ R 100° - 4'14'40"40" L 256.2
- ⑳ N 50°57'00" E - 87.10

