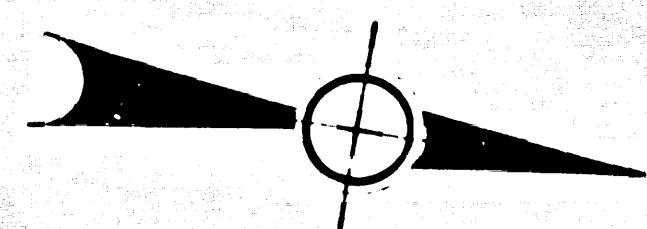


R.O.

A.D.D.

SUB. OF THE

P.O.R.



FM 21332  
ALL OF A6



COVINA

BLVD.

AMELIA

S.P. R.R.

R.W.

CIENEGA

AVE.

NE 1/4 of SE 1/4 of NE 1/4 of Sec 9

NE 1/4, SW 1/4, NW 1/4 of Sec 10

NW 1/4, SW 1/4, NW 1/4 of Sec 10

For NW 1/4 SW 1/4, NW 1/4, Sec 10

For W 1/2, SW 1/4, NW 1/4 of Sec 10

(VACA)

Exterior line SW 1/4, SW 1/4, NW 1/4, Sec 10

UNDIVIDED PROCEEDINGS

Section 10, T. 12 N., R. 12 E., S. 4

of the County of Santa Clara, State of California

vs. The Santa Clara Electric Railway Company

and

The Santa Clara Electric Railway Company

vs. The Santa Clara Electric Railway Company

and

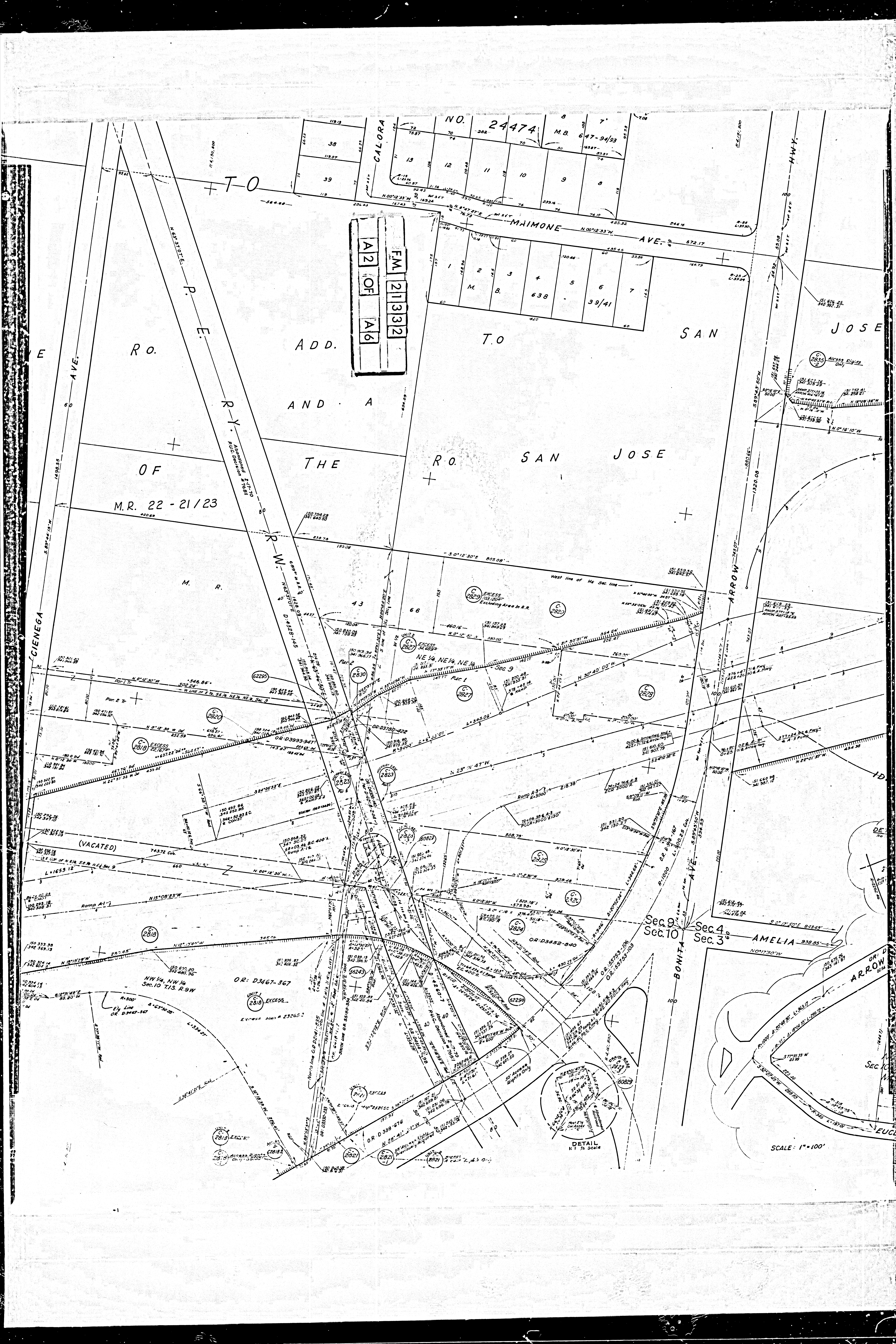
The Santa Clara Electric Railway Company

vs. The Santa Clara Electric Railway Company

and

The Santa Clara Electric Railway Company





NO. 24474		M.B. 647-94/93	
8	7	6	5
15	12	11	10
9	8	7	6

FM 21332  
A2 OF A6

M.R. 22-21/23

Sec. 9  
Sec. 10

Sec. 4  
Sec. 3

DETAIL  
N.T. to Scale

SCALE: 1" = 100'



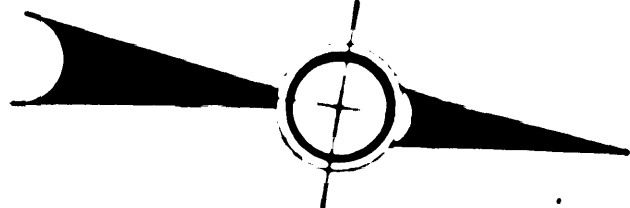
SAN  
P 2

JOSE

162

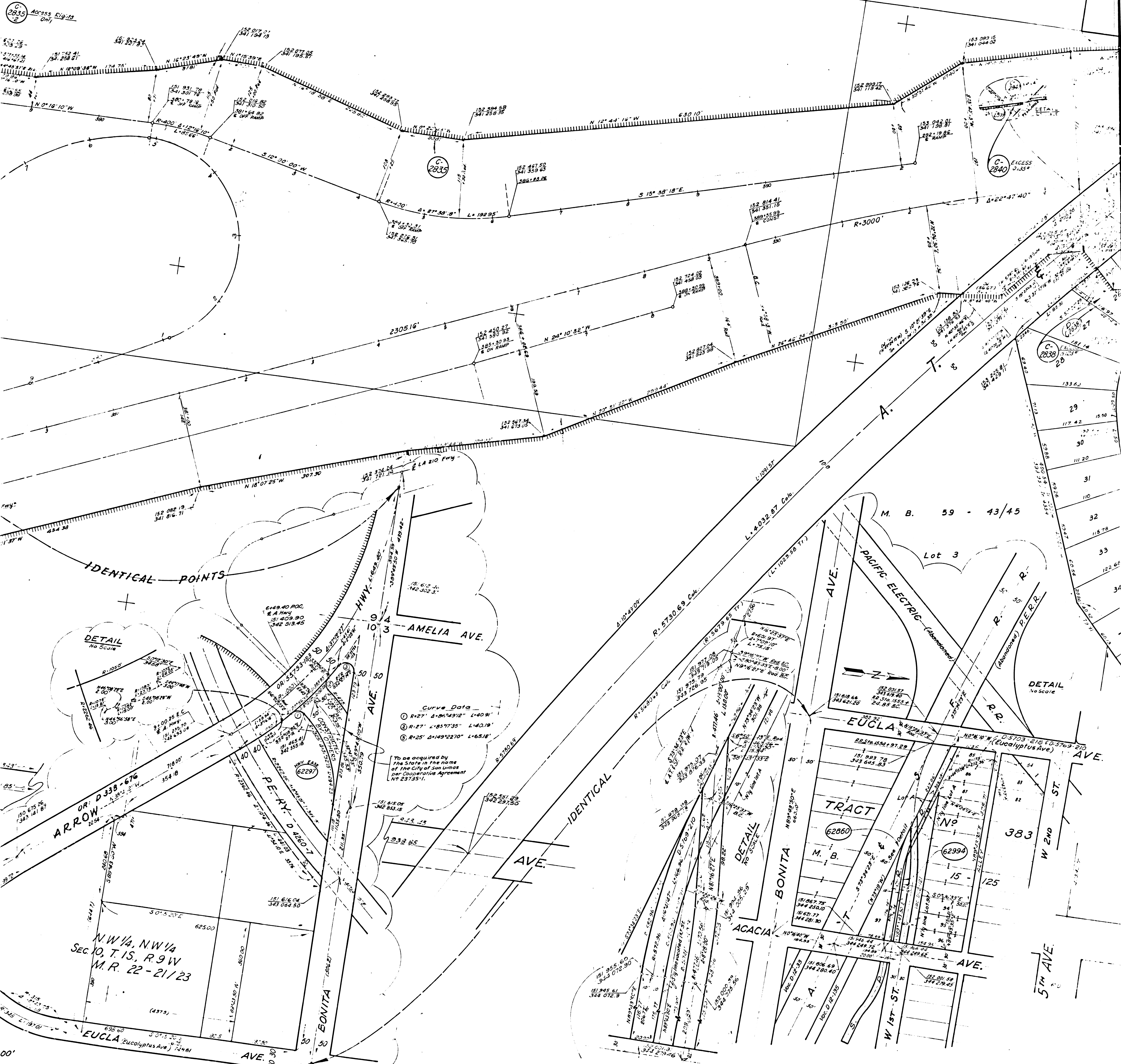
163

FM. 21332  
OF  
A6



M. R. 53 - 1

JOSE



DETAIL  
No Scale

DETAIL  
No Scale

Curve Data  
① R=27' Δ=96°43'12" L=40.91'  
② R=27' Δ=83°17'35" L=40.10'  
③ R=25' Δ=149°22'10" L=65.18'

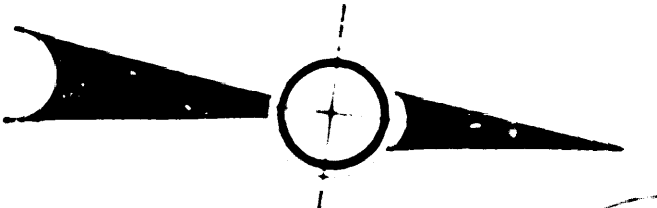
To be acquired by  
the State in the name  
of the City of San Jose  
per Cooperative Agreement  
No. 23735-1.

N.W. 1/4, N.W. 1/4  
Sec. 10, T. 15, R. 9 W  
M.R. 22 - 21/23

SCALE 1"=100'



POR. OF



City Limits of  
City Limits of

DETAIL  
NO SCALE

City Limits of GLENDORA  
City Limits of SAN DIMAS

Parcel 2, T.R.  
FOR S 1/2, S 1/2, NE 1/4, SEC 4

NE 1/4, Sec 4, T.15, R.9W, SBB 4M  
OR 54877-120  
Parcel 1, T.R.  
FOR SW 1/4, SE 1/4, NE 1/4, SEC 4

TRACT NO 21108

GROVETON AVE

AGUIRRE AVE

BRADISH AVE

AMELIA AVE

TRACT NO 9601

TRACT NO 4354

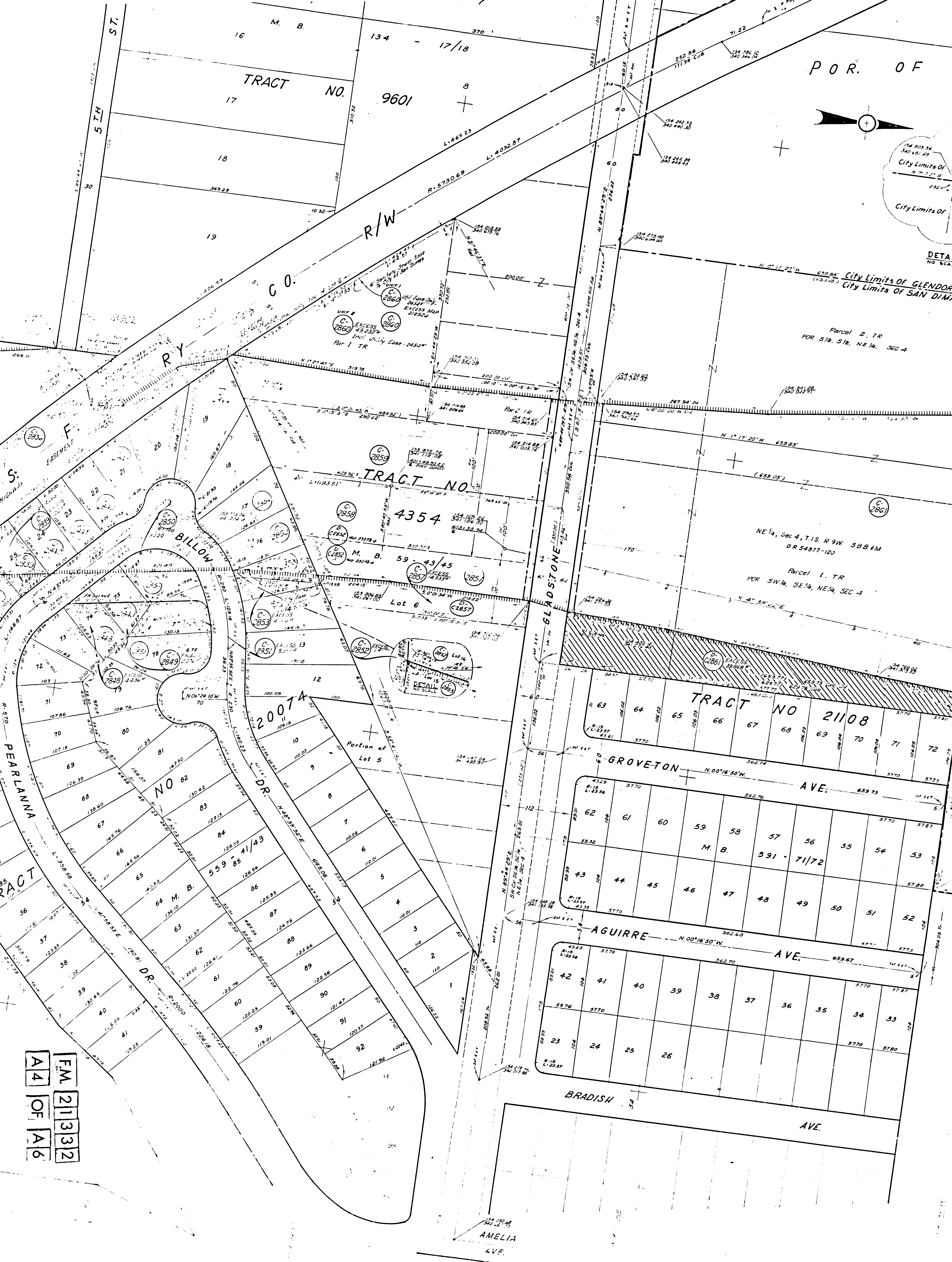
TRACT NO 559-85-41/43

FM 211332  
A4 OF A6

DETAIL  
SCALE

W 2ND ST

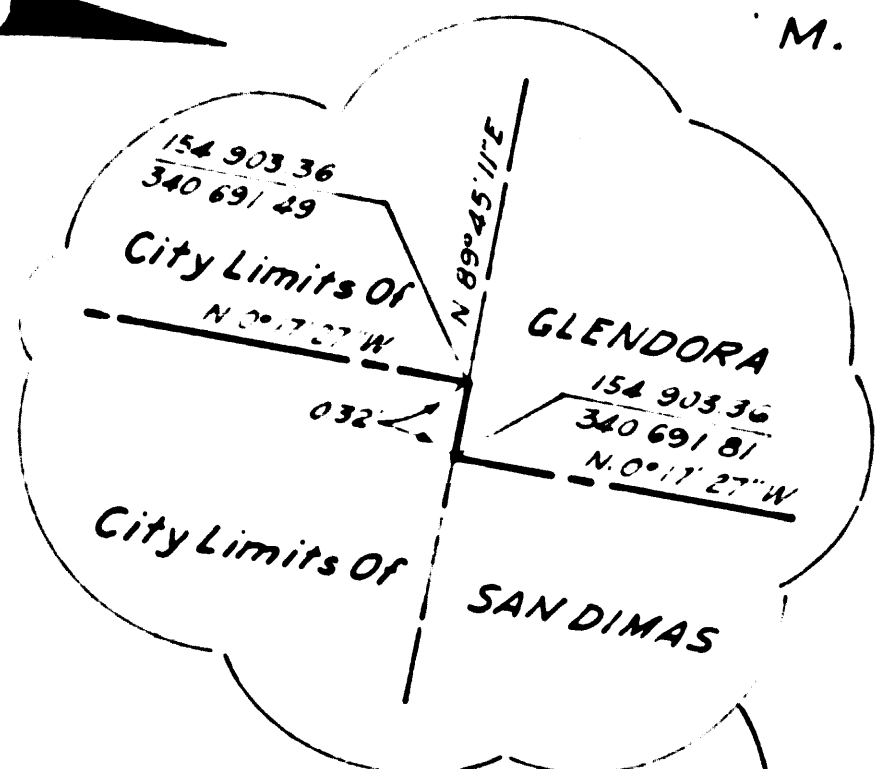
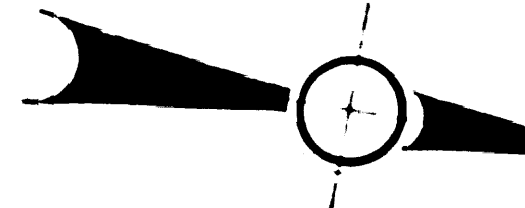
S 1st AVE





POR. OF THE R.O. SAN JOSE

M. R. 22 - 21/23



DETAIL  
NO SCALE

City Limits of GLENDORA  
City Limits of SAN DIMAS

Parcel 2, TR  
R.R. 5 1/2, 5 1/2, NE 1/4, SEC 4

NE 1/4, SW 1/4, NE 1/4, SEC 4

AVE.

M. R.

BOULDER

21108

Parcel 1, TR  
R.R. 5 1/2, NE 1/4, SEC 4

NW 1/4, SE 1/4, NE 1/4, SEC 4

ALLEN

DEPT. OF WATER & POWER

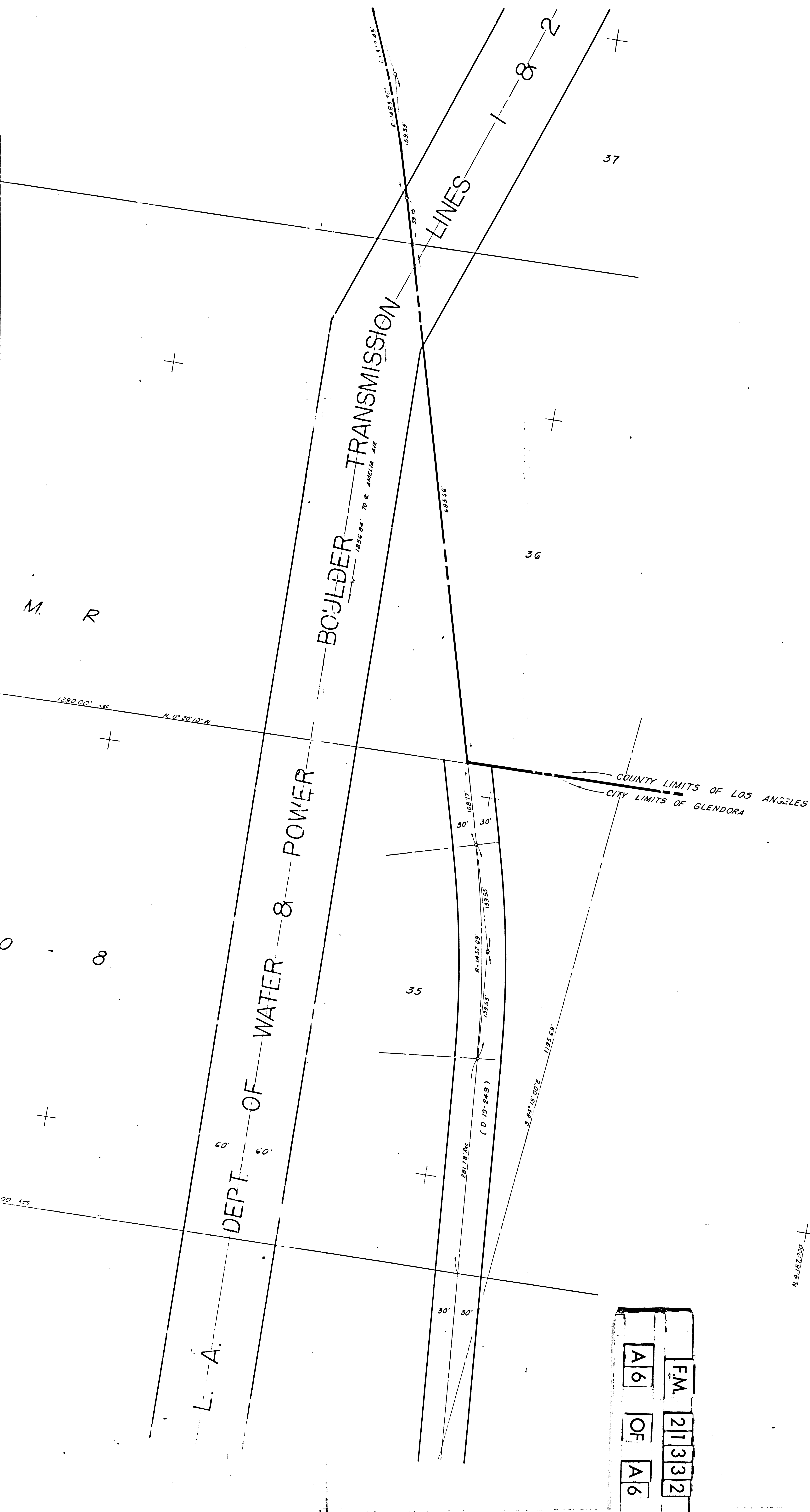
L. A.

69	70	71	72
55	54	53	
50	51	52	

5	34	33
	5770	5780

F.M. 21332  
A5 OF A6





N. 4.157.030  
E. 4.340.000

E. 4.340.000

E. 4.341.000

N. 4.157.030  
E. 4.341.500

NOTE:  
"REVISED TO SHOW EXCESS PROPERTY 11-12-69"  
"EXCESS PROPERTY APPROVAL 11-24-69"

**NOT TO BE TAKEN FROM DISTRICT OFFICE**  
COORDINATES SHOWN ARE FOR INTERNAL USE OF THE DIVISION OF HIGHWAYS AND ARE TO BE USED FOR REFERENCE ONLY

STATE OF CALIFORNIA  
TRANSPORTATION AGENCY  
DEPARTMENT OF PUBLIC WORKS  
DIVISION OF HIGHWAYS

ROAD: 07-LA-210-459/446  
(Old 07-LA-240)

**R/W MAP**  
COVINA BOULEVARD  
TO ROUTE 30 FREEWAY

0 50 100 150 200 250

F.M. 21332  
OF A6