

| B.P.R. REG. NO. | STATE | FEDERAL PROJECT NO. | EFFECTIVE DATE | SHEET NO. | TOTAL SHEETS |
|-----------------|--------|---------------------|----------------|-----------|--------------|
| 7 | CALIF. | 1-210-1149142 | 12-14-63 | 25 | 25 |

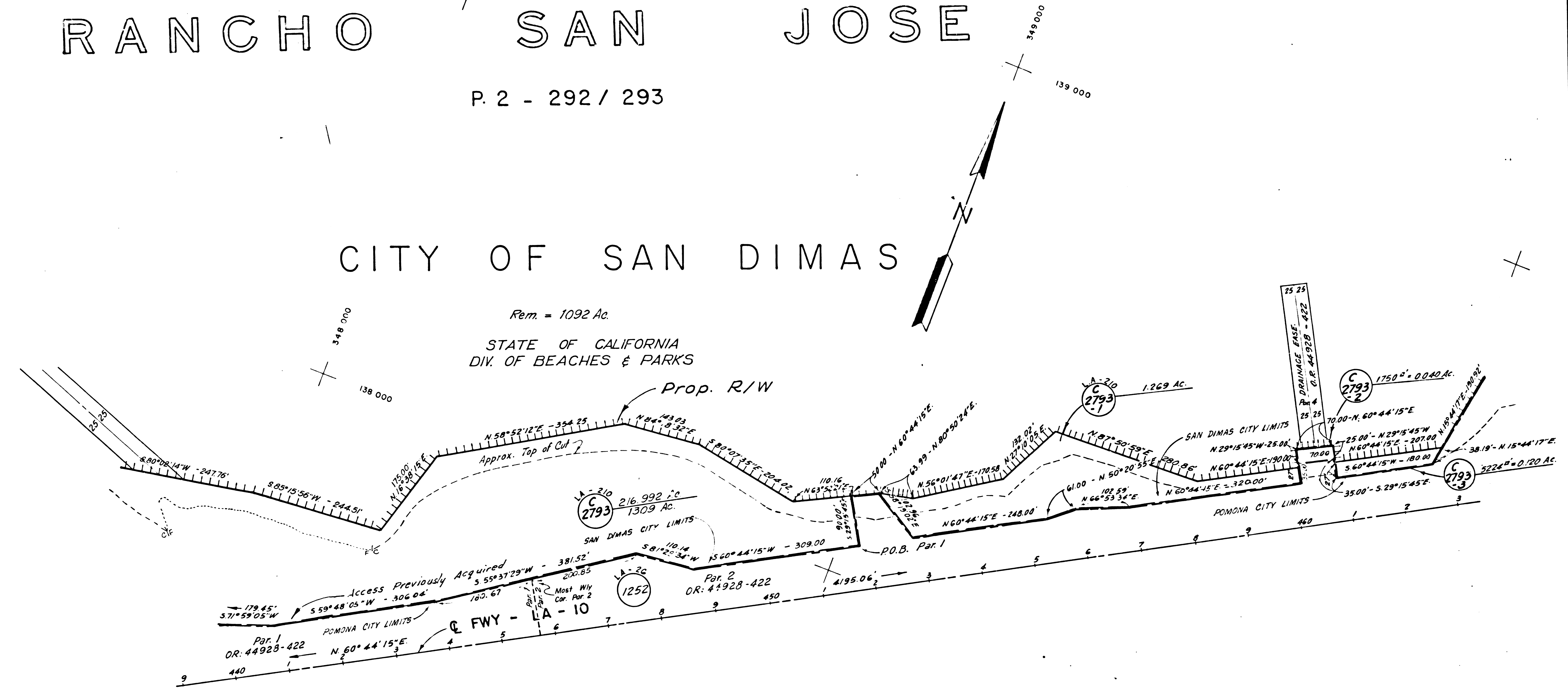
DISTRICT R/W AGENT BUREAU OF PUBLIC ROADS DATE

RANCHO SAN JOSE

P. 2 - 292 / 293

CITY OF SAN DIMAS

Rem. = 1092 Ac.
STATE OF CALIFORNIA
DIV. OF BEACHES & PARKS



FOR CONTINUATION SEE APPR. MAP 17981/C

INTERSTATE

| | | | |
|--------------------------------------------------------------------------------------|--|-------------------------------------------------------------------------------------------------------------------------------------------------------------------------------|--|
| REVISION DATES REV. BY DATE REV. BY DATE J.A. 6-22-67 J.C.L. 3-21-68 | | STATE OF CALIFORNIA TRANSPORTATION AGENCY DEPARTMENT OF PUBLIC WORKS DIVISION OF HIGHWAYS 7- LA - 210 - R48.5 APPRAISAL MAP N/SIDE OF LA-10 FWY. | |
| SCALE 1" = 100' DRAFT V.W.S. RWPE D.E.N. | | FILE NO. 17980 - C DATE 8-11-1966 APPROVED <i>[Signature]</i> | |

----- ACCESS DENIAL LINE ----- TOP OF CUT ----- TOE OF FILL
 * UNLESS OTHERWISE NOTED ALL AREAS ARE IN SQUARE FEET
 LEGEND: IF MORE THAN ONE BEARING AND DISTANCE ARE SHOWN FOR A LINE, THE ONE IN PARENTHESES IS PREVIOUS RECORD

F.M. 21346

FM. 21346