

# ALAMITOS BAY BOUNDARY INVESTIGATION

## ALAMITOS BAY BOUNDARY SETTLEMENT & EXCHANGE NO. 7

### EXHIBIT "A"

#### PART OF

### THE ALAMITOS BAY AREA

CITY OF LONG BEACH, LOS ANGELES COUNTY, CALIFORNIA

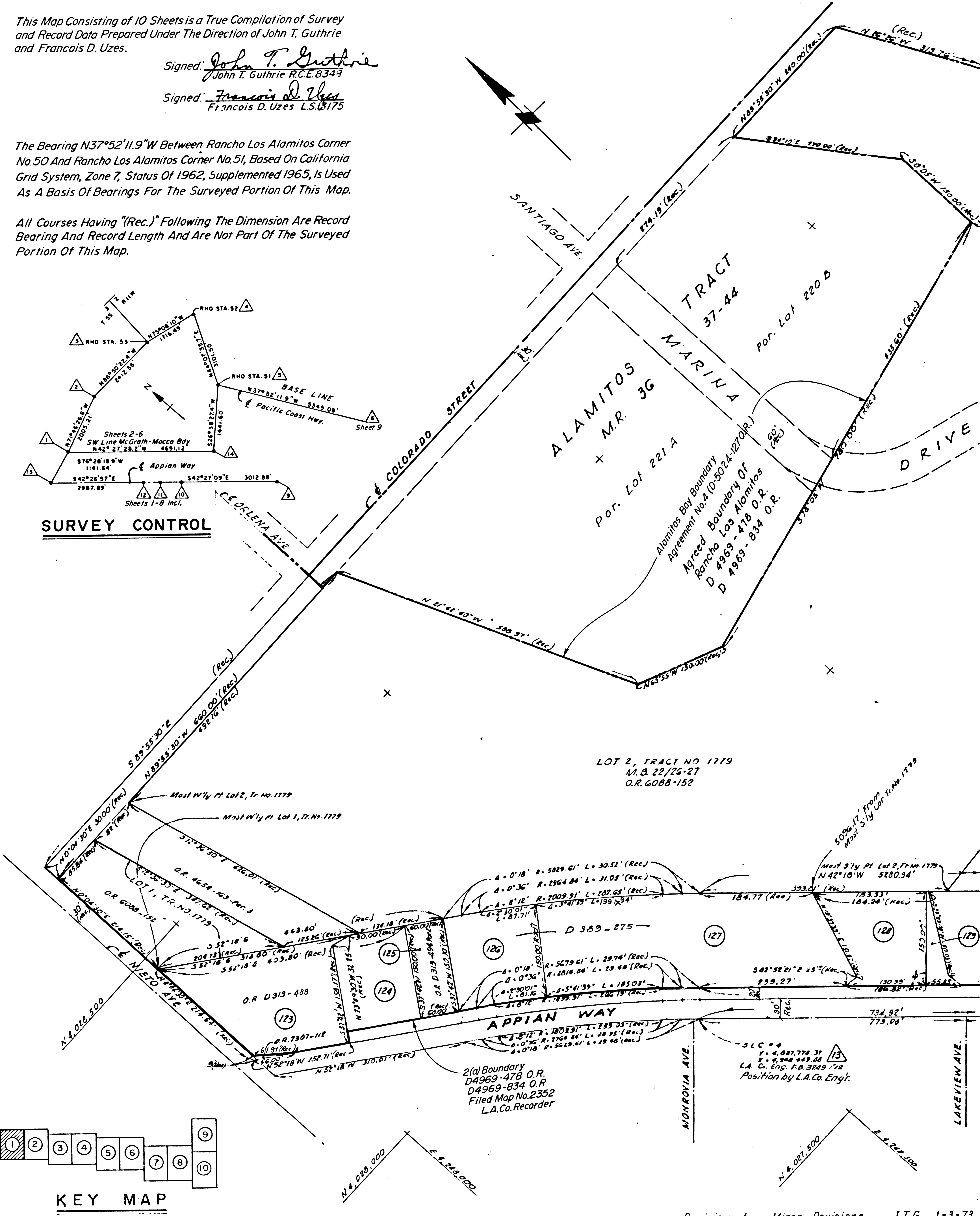
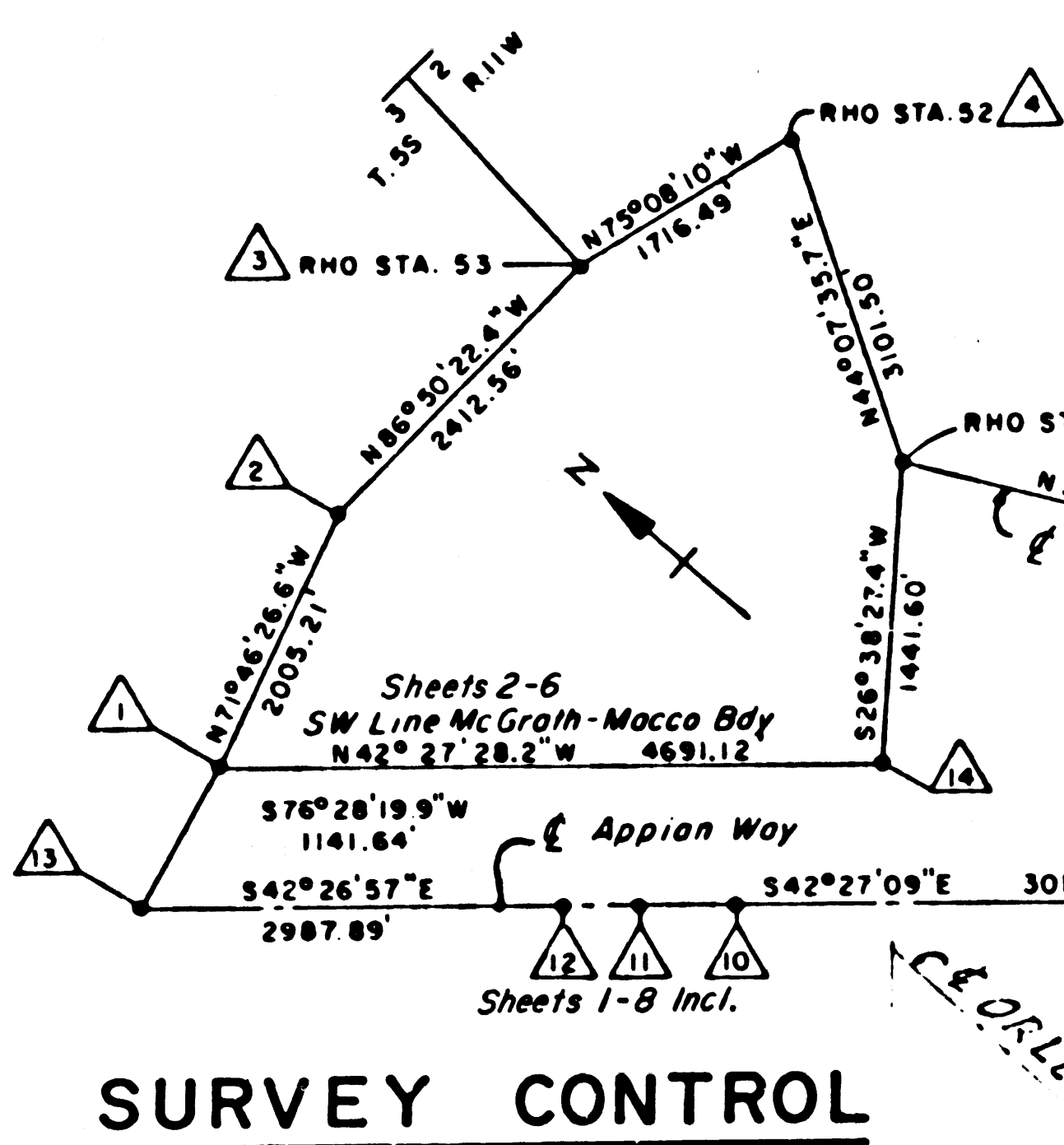
This Map Consisting of 10 Sheets is a True Compilation of Survey and Record Data Prepared Under The Direction of John T. Guthrie and Francois D. Uzes.

Signed: John T. Guthrie  
John T. Guthrie R.C.E. 8343

Signed: Francois D. Uzes  
Francois D. Uzes L.S. 6175

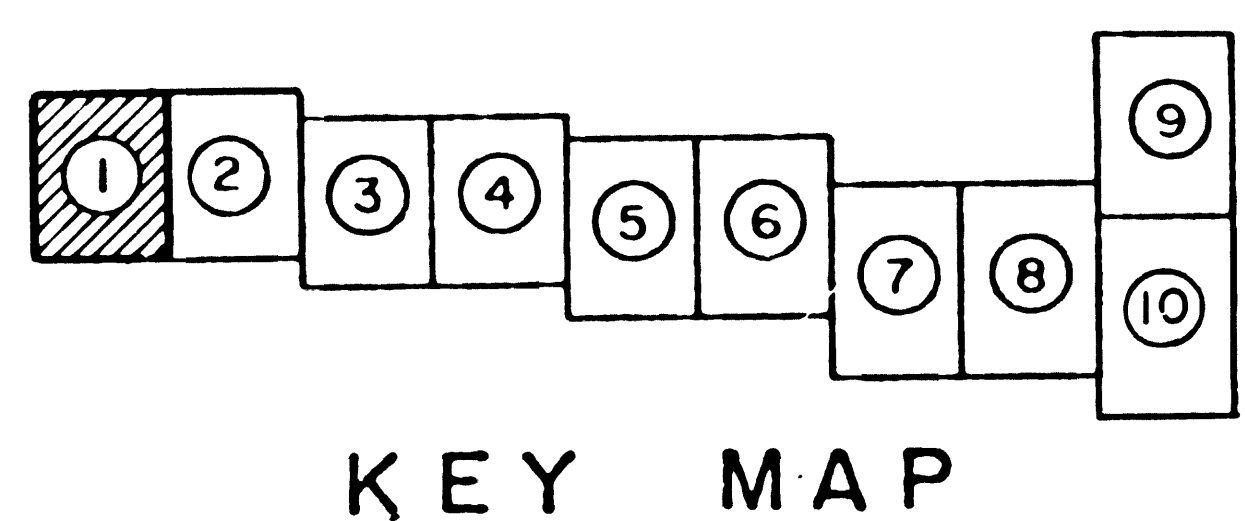
The Bearing N37°52'11.9"W Between Rancho Los Alamitos Corner No. 50 And Rancho Los Alamitos Corner No. 51, Based On California Grid System, Zone 7, Status Of 1962, Supplemented 1965, Is Used As A Basis Of Bearings For The Surveyed Portion Of This Map.

All Courses Having "(Rec.)" Following The Dimension Are Record Bearing And Record Length And Are Not Part Of The Surveyed Portion Of This Map.



F.M. 21388-1

COUNTY ENGINEER'S COPY



KEY MAP

Revision 1. Minor Revisions JTG 1-3-73

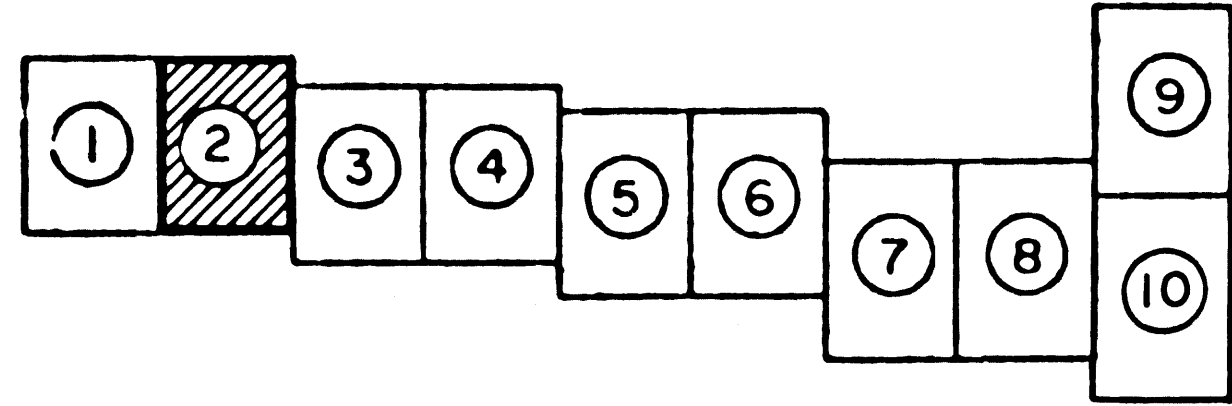
RECORDED IN OFFICIAL RECORDS  
OF LOS ANGELES COUNTY, CALIF.  
21 Min. Past 2 P.M. JUN 15 1973  
Registrar-Recorder

Filed  
No. F 2494

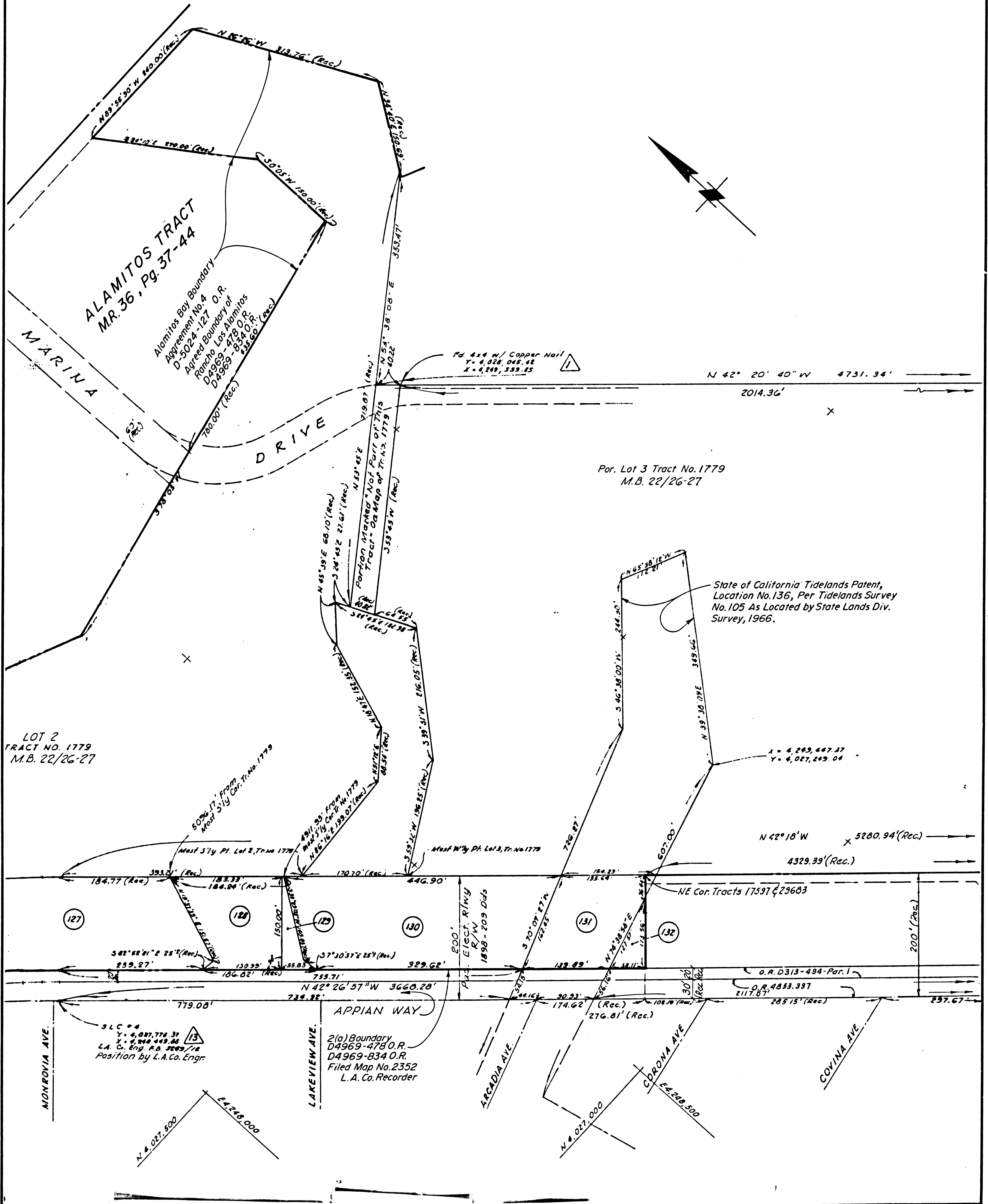
5802

SCALE: 1" = 100'

SHEET 2 OF 10 SHEETS



KEY MAP



F.M. 211388-2

COUNTY ENGINEERS COPY

RECORDED IN OFFICIAL RECORDS OF LOS ANGELES COUNTY, CALIF. 21 Min. Past 2 P.M. JUN 15 1973 Registrar-Recorder

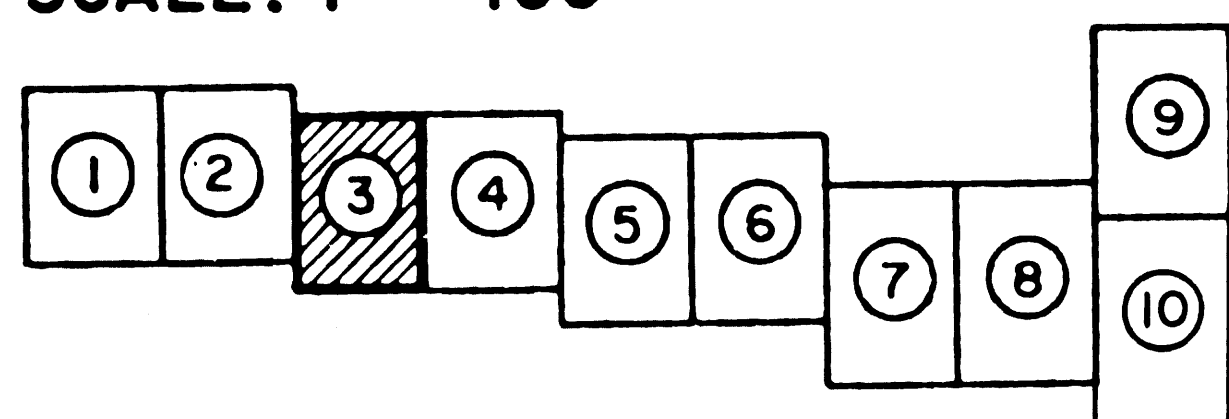
Filed No. F 2494

5802

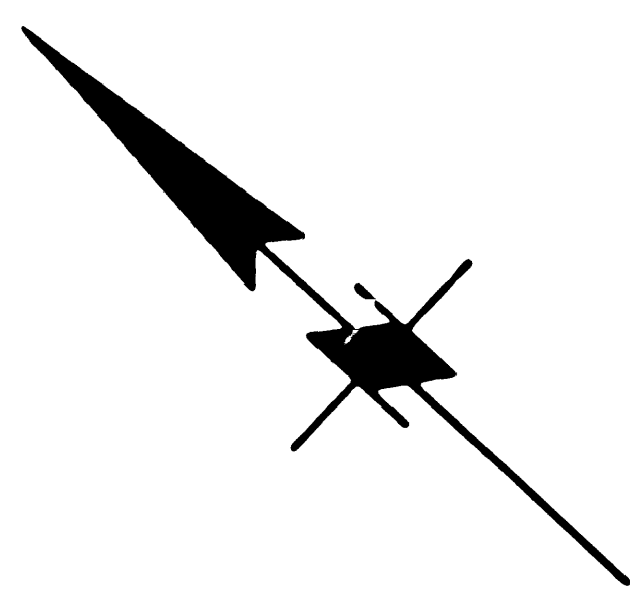


SCALE: 1" = 100'

SHEET 3 OF 10 SHEETS



KEY MAP



MC GRATH - MACCO BOUNDARY SETTLEMENT AND EXCHANGE AREA  
 SEE EXHIBIT A - C.L.B. DRAWING NO. C3209

M 3634 - 339 O.R.  
 M 3634 - 526 O.R.  
 Filed Map No. 2339  
 L.A. Co. Recorder

N 42° 20' 40" W 4731.34' Per Exhibit A - C.L.B. Drg. C3209 (N 42° 27' 28" W Per Calif. Grid Coord. System - Ref. 0° 06' 48")

Por. Lot 3 Tr. No. 1779  
 M.B. 22/26-27

State Of California Tide Lands Patent, Location No. 136,  
 Per Tideland Survey No. 103 As Located By  
 State Lands Division Survey 1966

X = 4,243,447.37  
 Y = 4,027,249.04

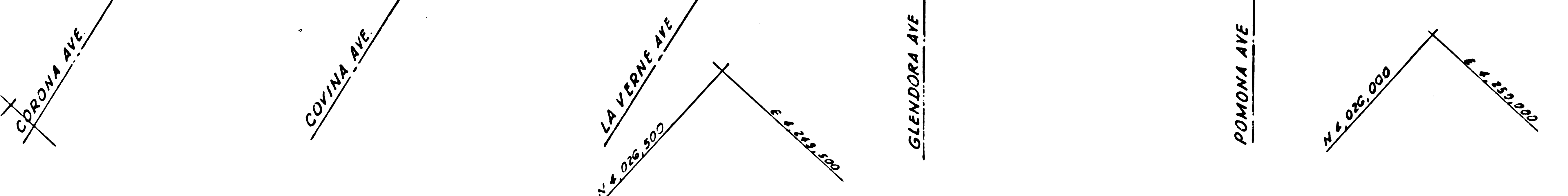
N 42° 18' W 5280.94' To NW Corner Lot 1, Tract No. 1077 (Rec.)

4329.39' (Rec.)

NB Corn. Tracts 17257 & 29683

STATUTES 1965 CHAPTER 1688 SEC. 2 (a) (1) LINE  
 D 4969-478 O.R.  
 D 4969-834 O.R.  
 Filed Map No. 2352  
 L.A. Co. Recorder  
 TRACT NO. 29683  
 M.B. 731 / 50-58

O.A. D 313-890-Part  
 O.R. 4853-397  
 N 42° 26' 57" W 3668.28'  
 2117.02'  
 213.55' (Rec.)  
 APPIAN WAY  
 327.67' (Rec.)  
 386.46' (Rec.)



F.M. 21388-3

COUNTY ENGINEER'S COPY

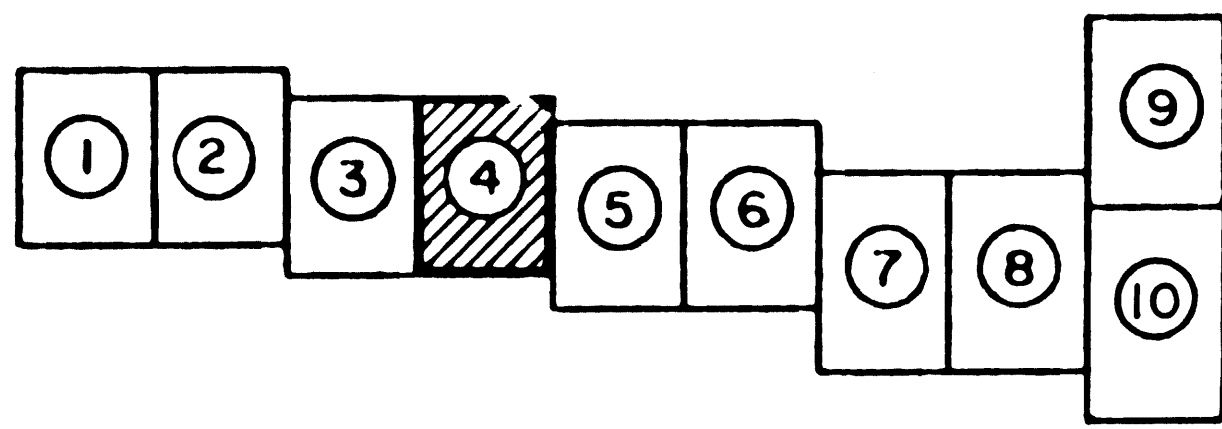
IN OFFICIAL RECORDS  
 OF LOS ANGELES COUNTY, CALIF.  
 21 Min. Past 2 P.M. JUN 15 1973  
 Registrar-Recorder

Filed  
 No. F 2494

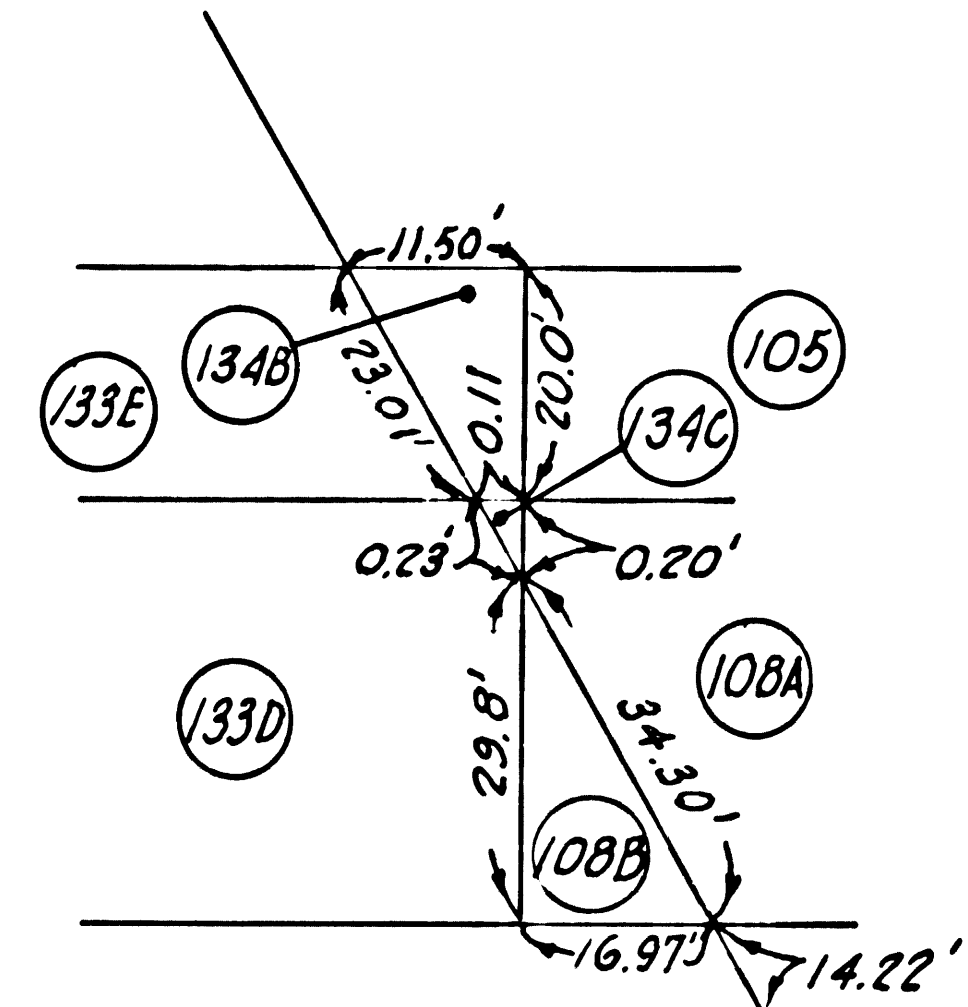
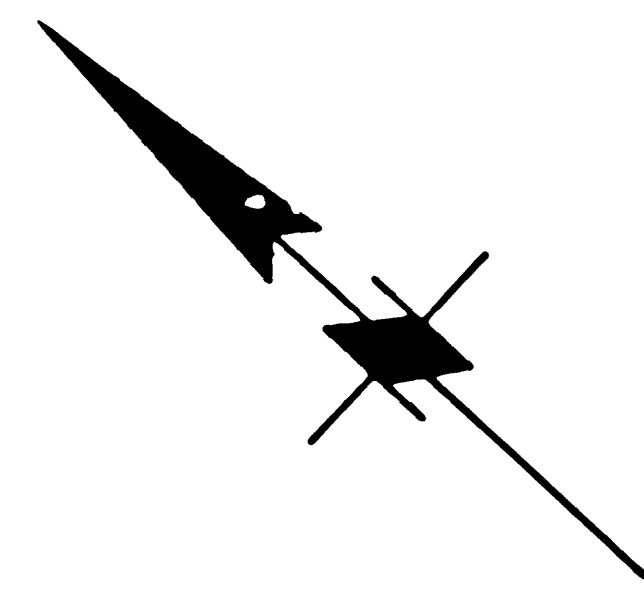
5802

SCALE: 1" = 100'

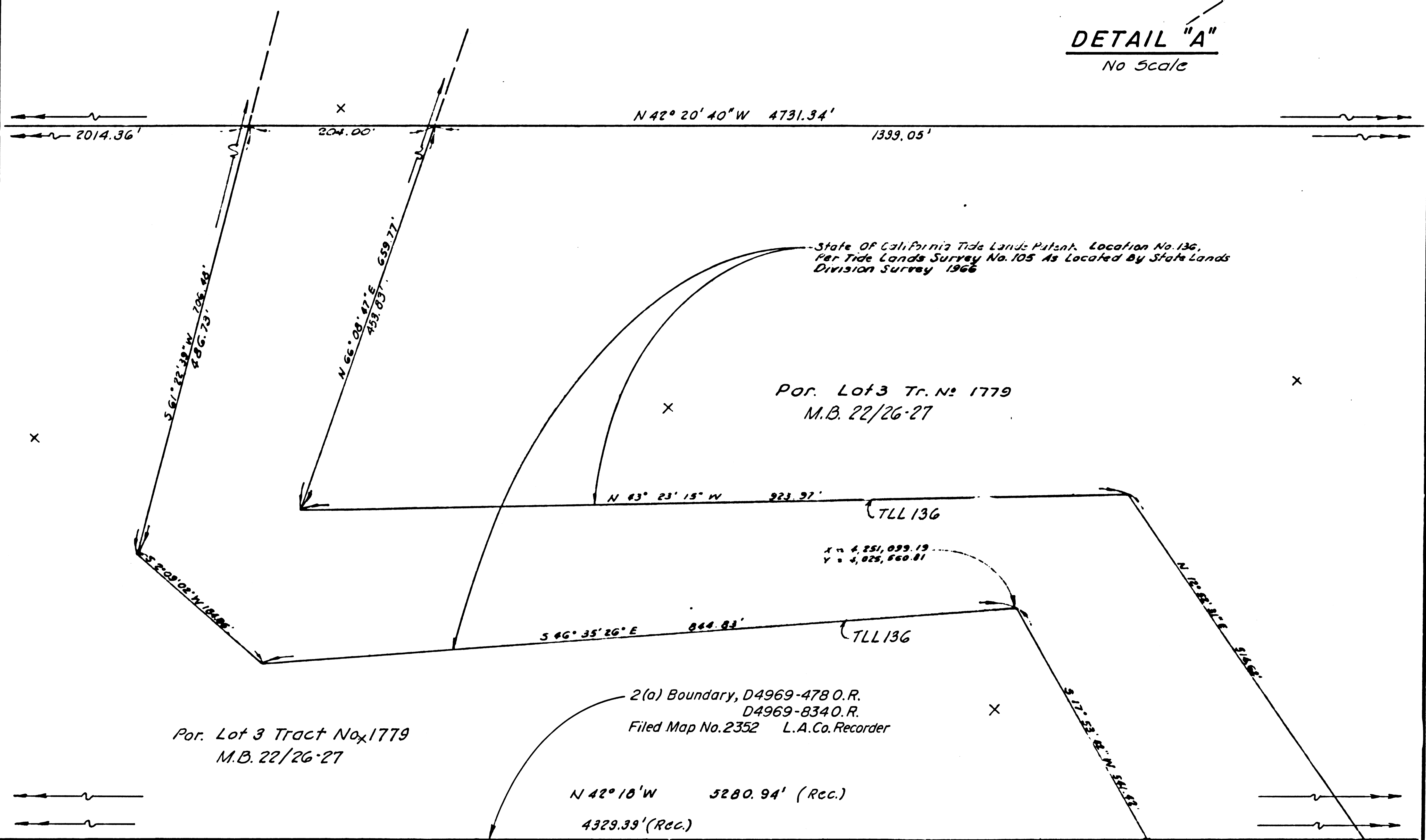
SHEET 4 OF 10 SHEETS



KEY MAP



DETAIL "A"  
No Scale

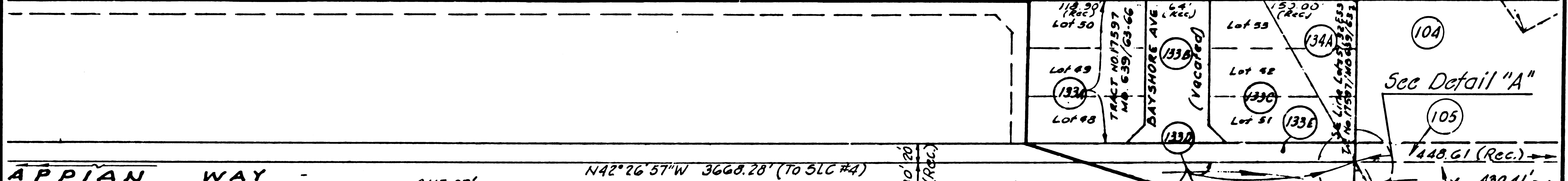


Por. Lot 3 Tract No. 1779  
M.B. 22/26-27

2(a) Boundary, D4969-478 O.R.  
D4969-8340 R.  
Filed Map No. 2352 L.A. Co. Recorder

Por. Lot 3 Tr. No. 1779  
M.B. 22/26-27

State Of California Tide Lands Patent, Location No. 136,  
Per Tide Lands Survey No. 105 As Located By State Lands  
Division Survey 1966



APPIAN WAY

SANTA ANA AVE

CLAREMONT AVE

BAY SHORE AVE.

S.C.C. #5  
F.D. C.D. Mon # 4928 1/2 Int. & Clearance  
And SW Line of Pacific Electric Rwy R/W  
X = 4,013,573.63  
Y = 4,250,466.31  
L.A. Co. Engr. F.A. 3849/1a  
Position by L.A. Co. Engr.

Int. of Extension of S.E. Line of  
Lots 51, 52 and 53 of Tract No.  
17597 and S.W. Line P.E.R. R/W  
Nothing Fd. and Nothing Set  
X = 4,250,925.74  
Y = 4,025,071.63

F.M.  
211388-4

COUNTY ENGINEER'S COPY

IN OFFICIAL RECORDS  
OF LOS ANGELES COUNTY, CALIF.  
21 Min. Past 2 P.M. JUN 15 1973  
Registrar-Recorder

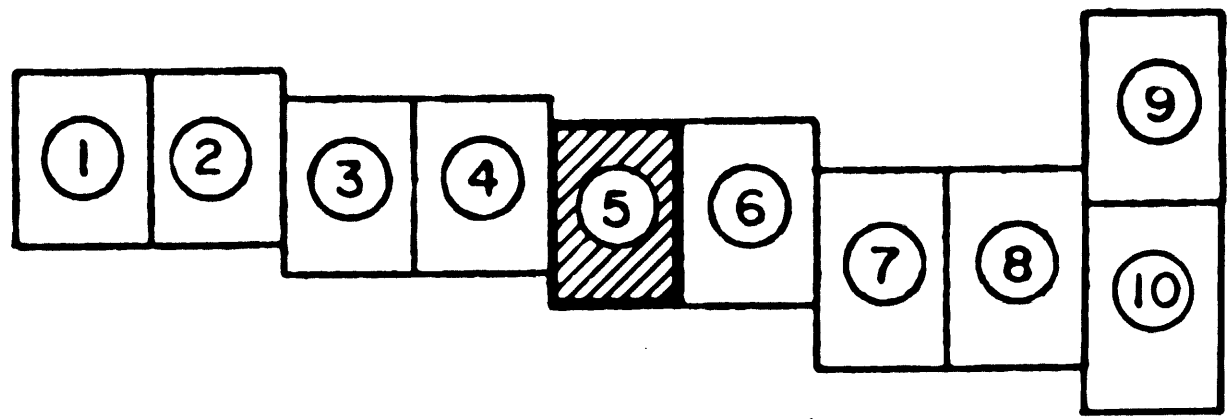
Filed  
No. F. 2494

5802



SCALE: 1" = 100'

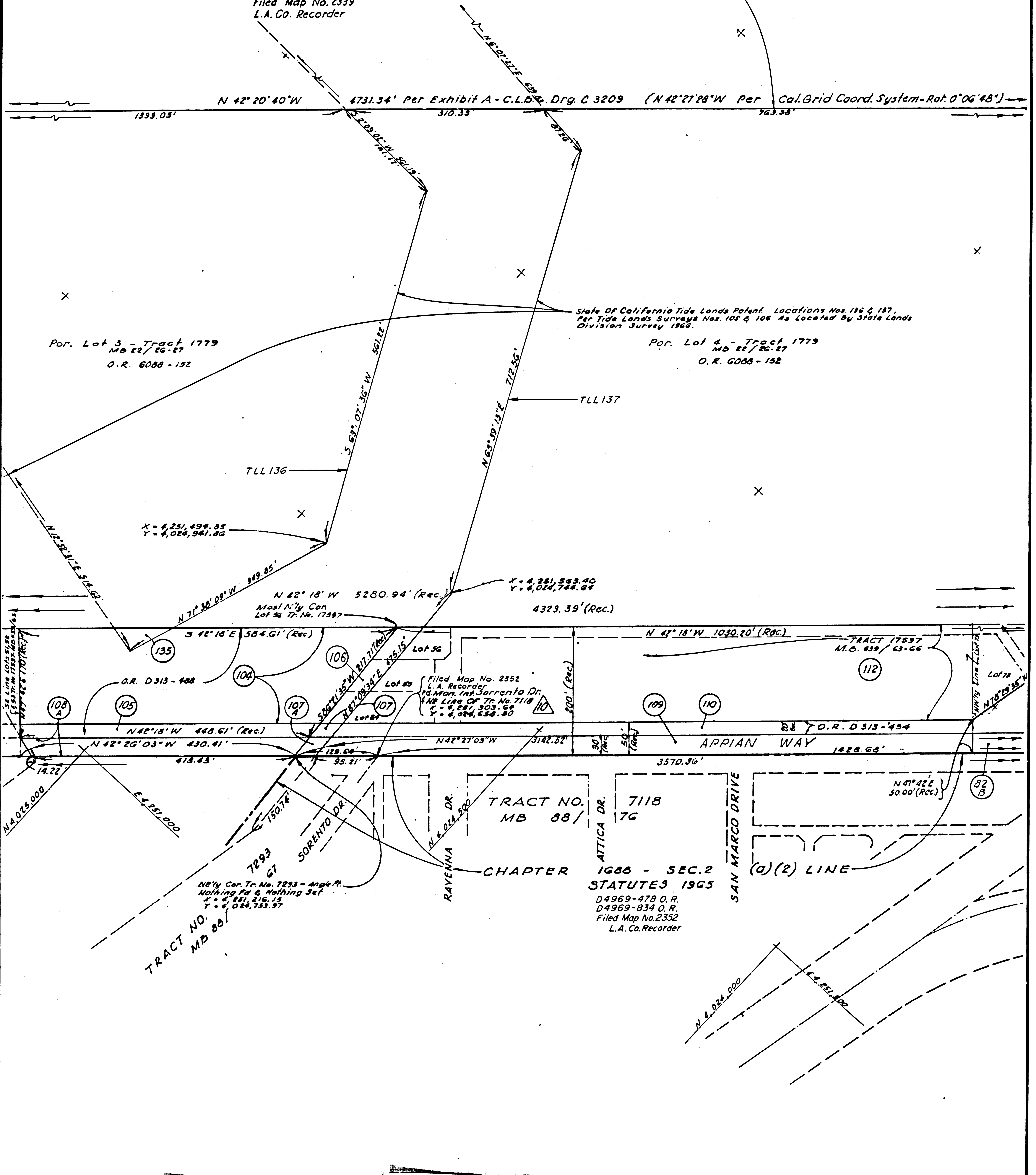
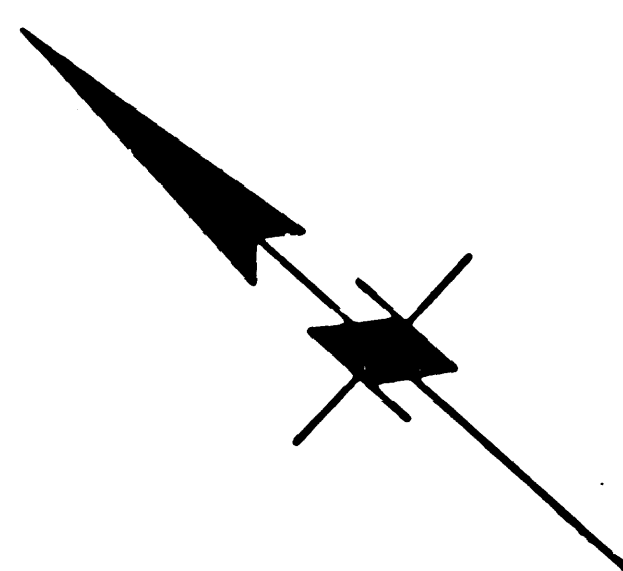
SHEET 5 OF 10 SHEETS



KEY MAP

MC GRATH-MACCO BOUNDARY SETTLEMENT AND EXCHANGE AREA  
SEE EXHIBIT A - C.L.D. DRAWING NO. C 3209

M 3634-339 O.R.  
M 3634-526 O.R.  
Filed Map No. 2339  
L.A. Co. Recorder



F.M.  
211388-5

COUNTY ENGINEER'S COPY

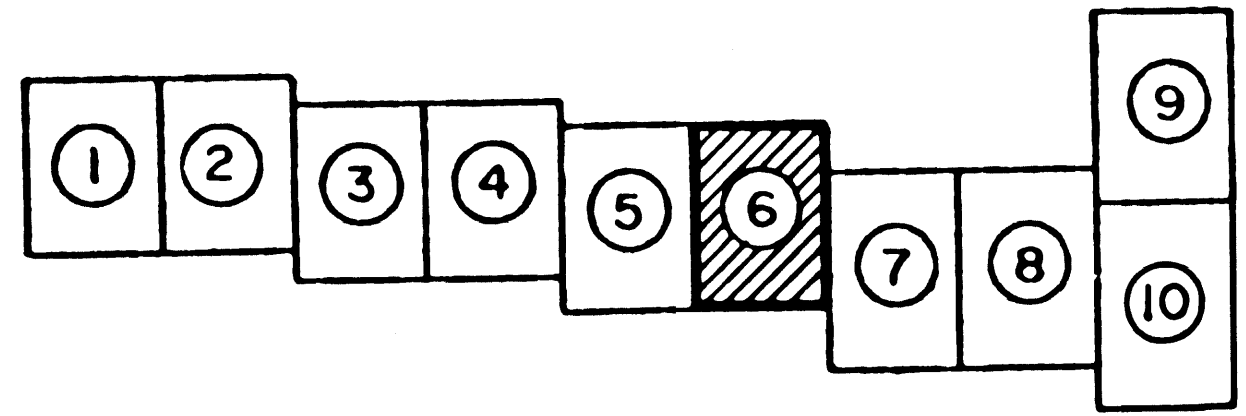
IN OFFICIAL RECORDS  
OF LOS ANGELES COUNTY, CALIF.  
21 Min. Past 2 P.M. JUN 15 1973  
Registrar-Recorder

Filed  
No. F 2494

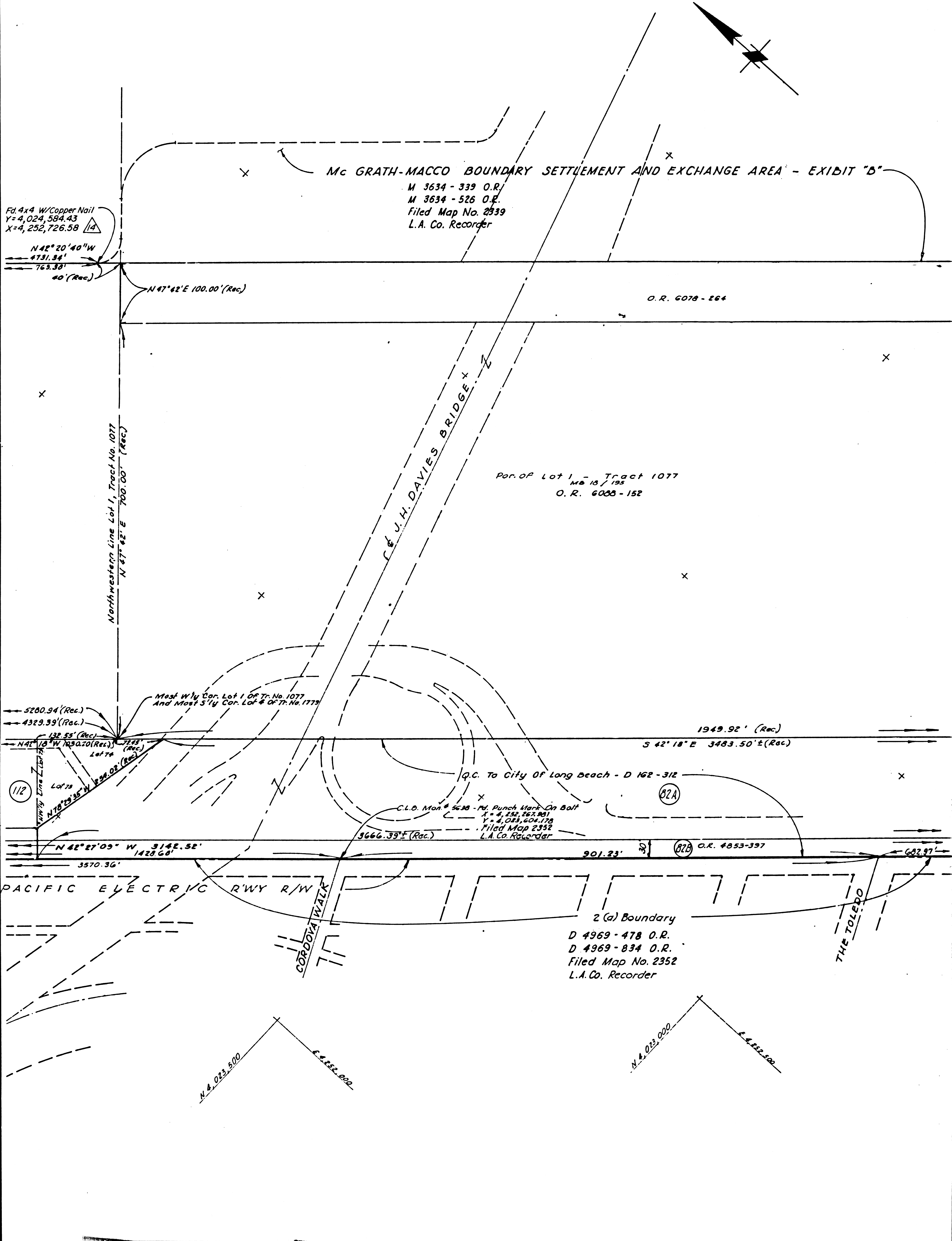
5802

SCALE: 1" = 100'

SHEET 6 OF 10 SHEETS



KEY MAP



F.M.  
21388-6

COUNTY ENGINEERS COPY

IN OFFICIAL RECORDS  
OF LOS ANGELES COUNTY, CALIF.  
21 Min. Past 2 P.M. JUN 15 1973  
Registrar-Recorder

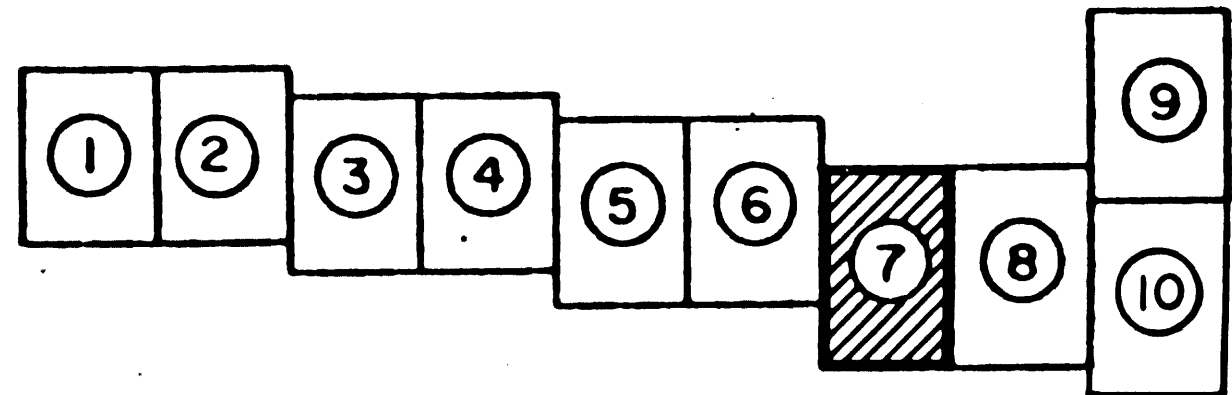
Filed  
No. F 2494

5802



SCALE: 1" = 100'

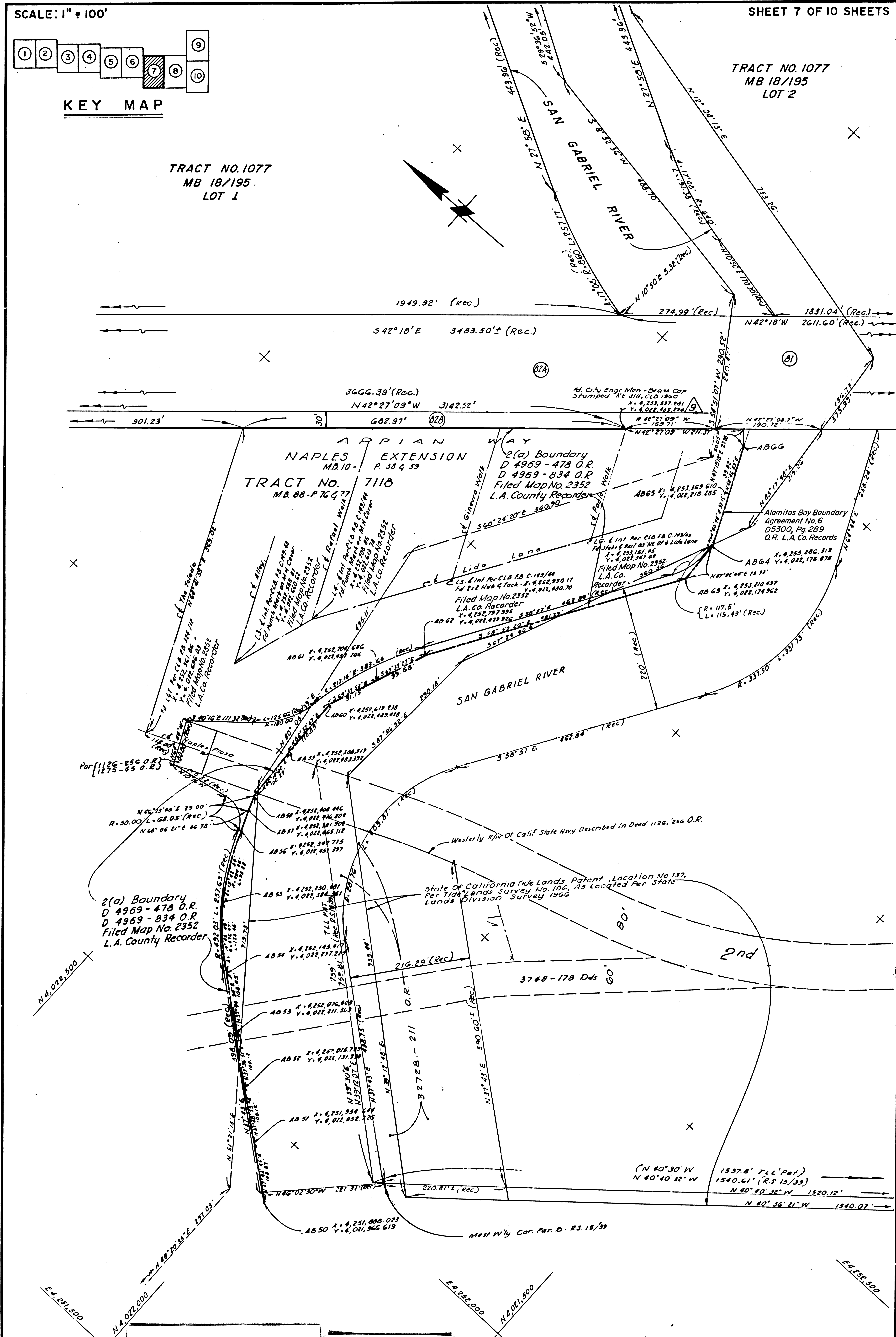
SHEET 7 OF 10 SHEETS



KEY MAP

TRACT NO. 1077  
MB 18/195  
LOT 2

TRACT NO. 1077  
MB 18/195  
LOT 1



F.M. 21388-7

COUNTY ENGINEER'S COPY

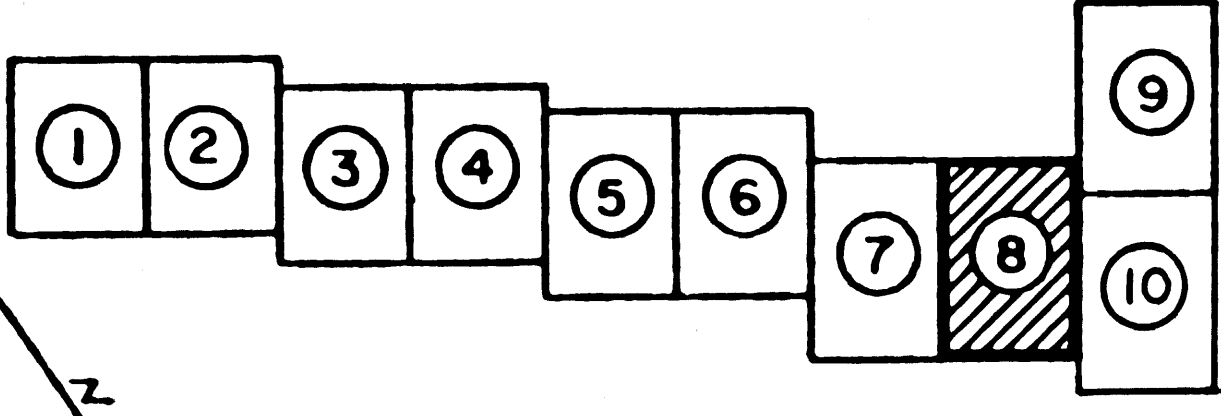
FILED IN OFFICIAL RECORDS  
OF LOS ANGELES COUNTY, CALIF.  
21 Min. Past 2 P.M. JUN 15 1973  
Registrar-Recorder

Filed  
No. F 2494

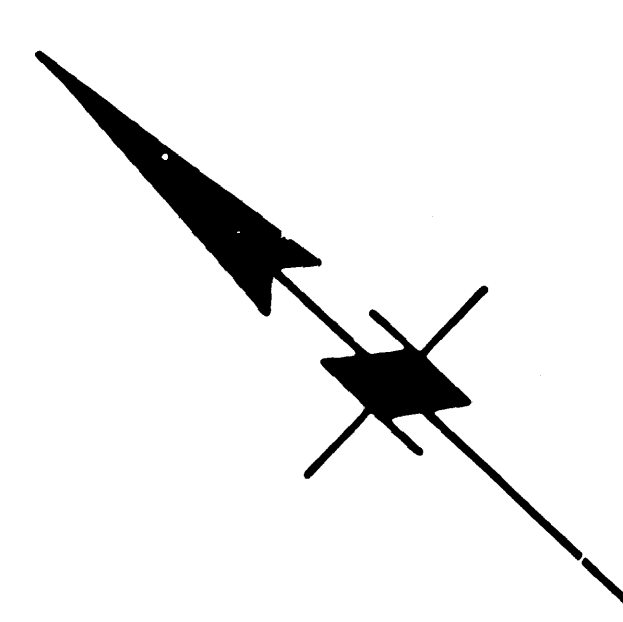
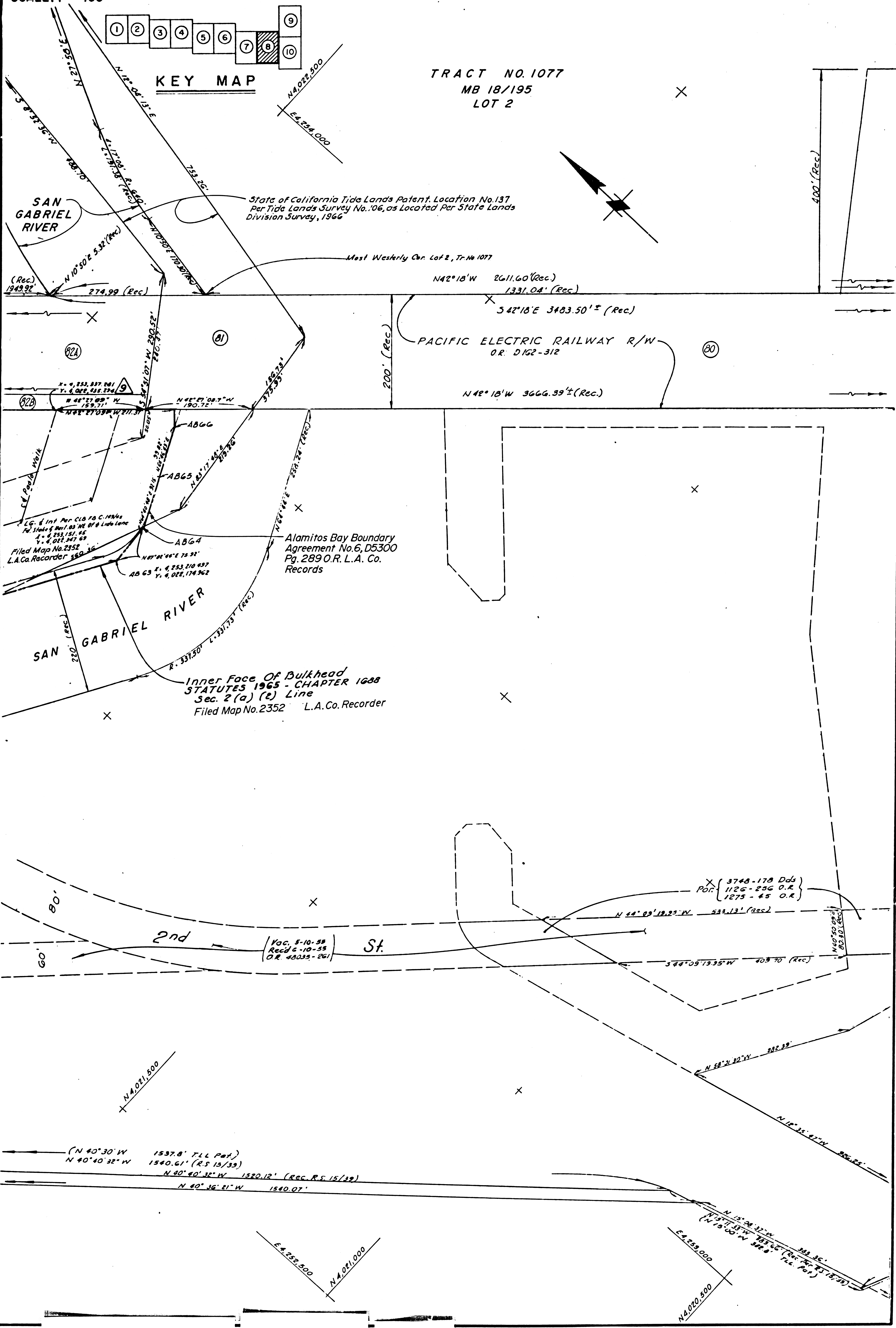
5802

SCALE: 1" = 100'

SHEET 8 OF 10 SHEETS



TRACT NO. 1077  
MB 18/195  
LOT 2



F.M.  
211388-8

COUNTY ENGINEER'S COPY

RECORDED IN OFFICIAL RECORDS  
OF LOS ANGELES COUNTY, CALIF.  
Min. Past 2 P.M. JUN 15 1973  
Registrar-Recorder

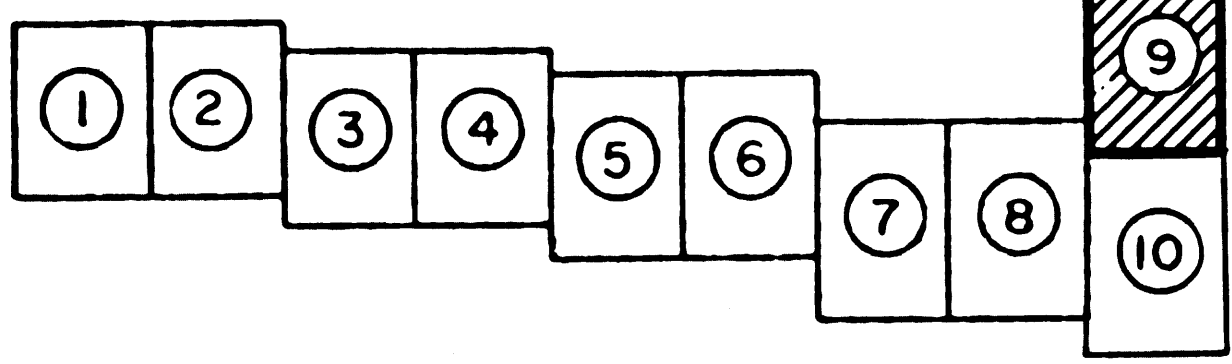
Filed  
No. F 2494

5802

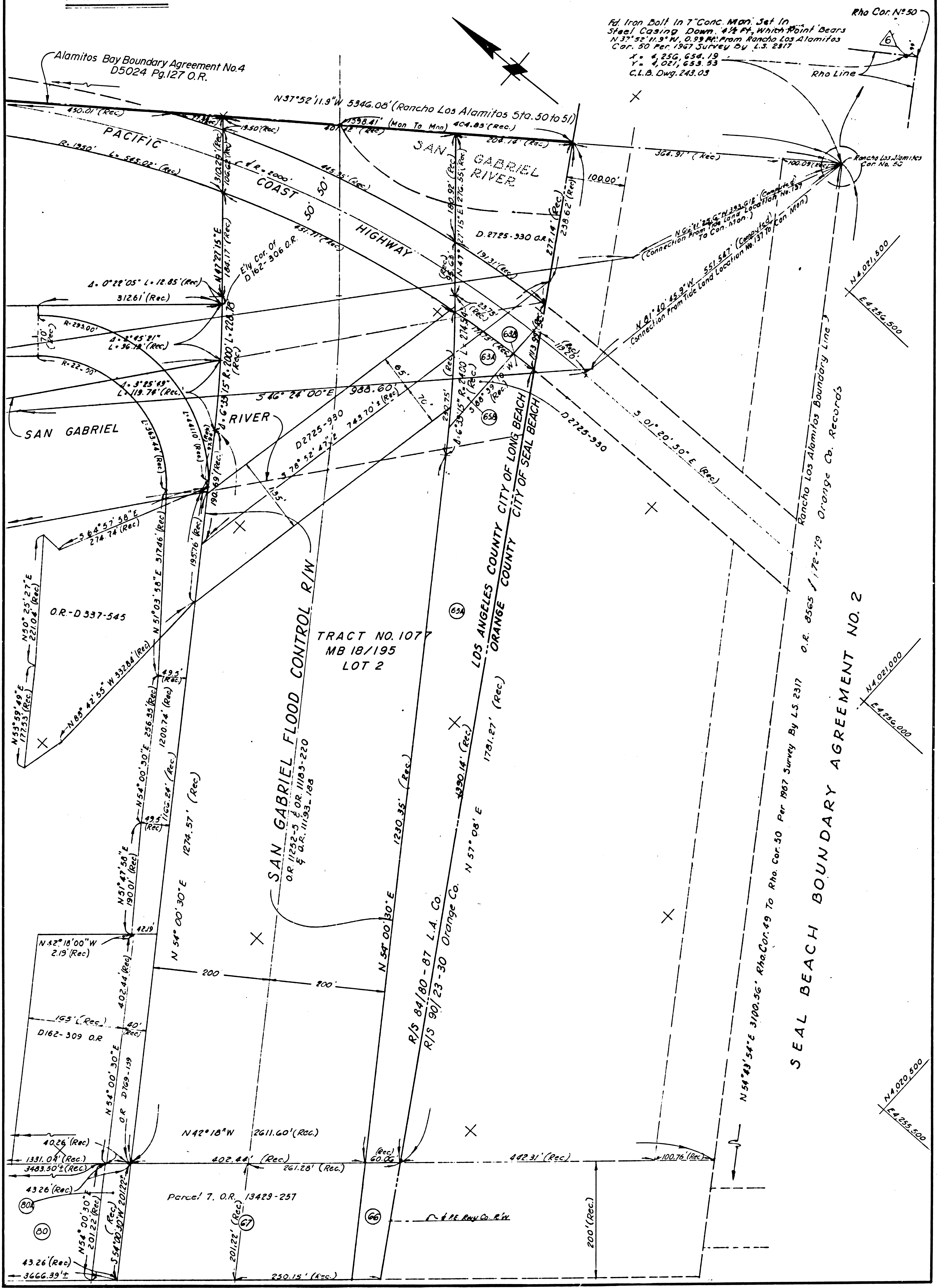


SCALE: 1" = 100'

SHEET 9 OF 10 SHEETS



KEY MAP



Rho Cor. N° 50  
Fd. Iron Bolt In 7" Conc. Mon. Set In  
Steel Casing Down 4 1/2 Ft. Which Point Bears  
N 37° 52' 11.9" W, 0.99 Ft. From Rancho Los Alamitos  
Cor. 50 Per 1967 Survey By L.S. 2817  
X = 4,256,654.19  
Y = 4,021,653.53  
C.L.B. Dwg. 243.03

F.M. 21388-9

COUNTY ENGINEERS COPY

IN OFFICIAL RECORDS  
OF LOS ANGELES COUNTY, CALIF.  
21 Min. 2 P.M. JUN 15 1973  
Registrar-Recorder

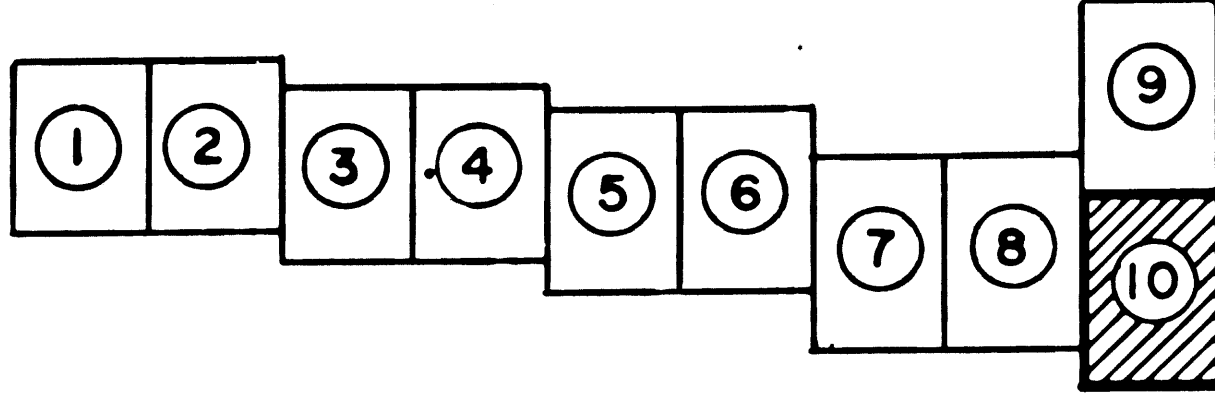
Filed  
No. F 2494

5802

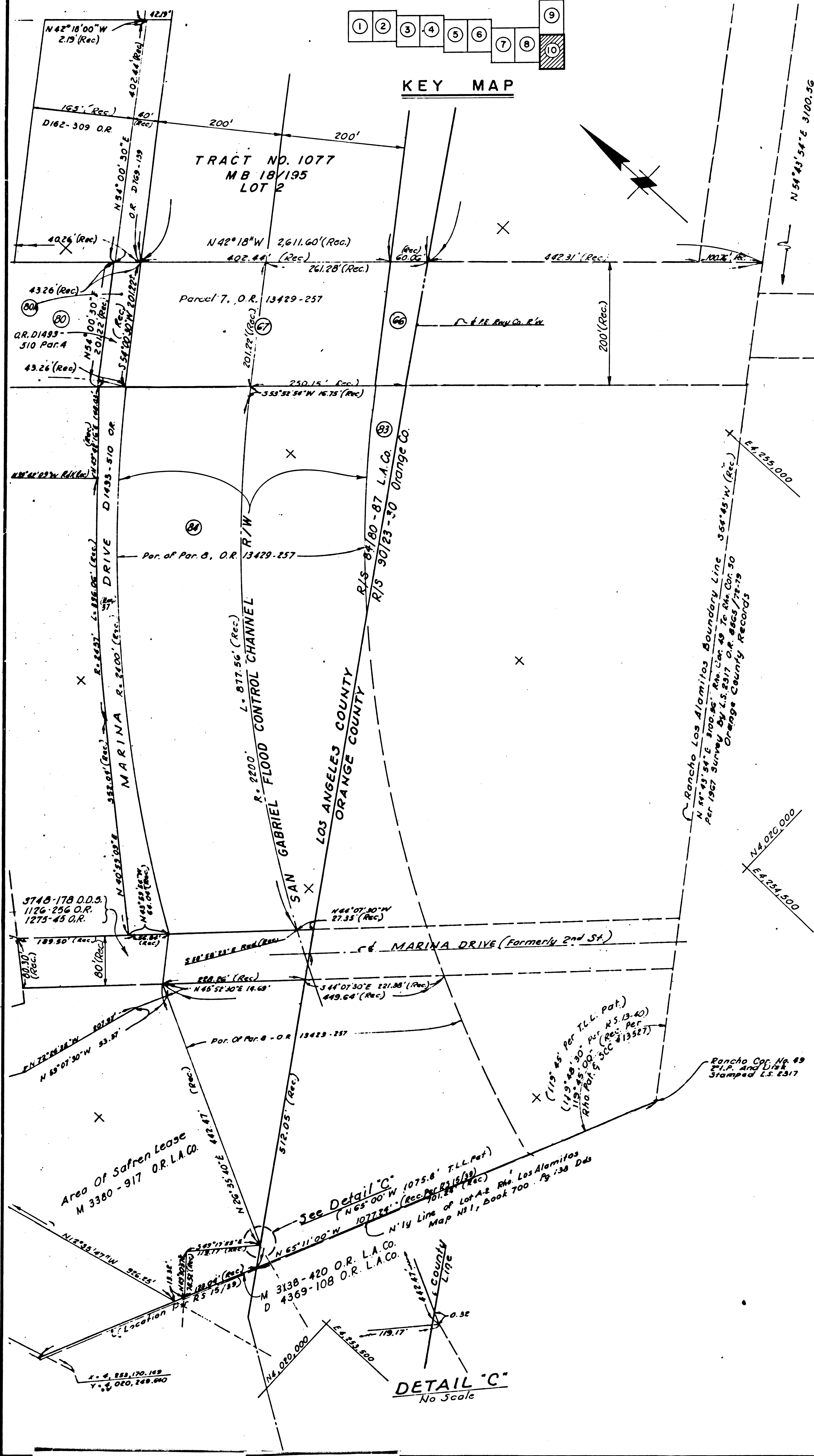


SCALE: 1" = 100'

SHEET 10 OF 10 SHEETS



KEY MAP



F.M. 21388-10

COUNTY ENGINEER'S COPY

FILED IN OFFICIAL RECORDS OF LOS ANGELES COUNTY, CALIF. 21 Jun 15 1973 Registrar-Recorder

Filed No. F 2494

5802