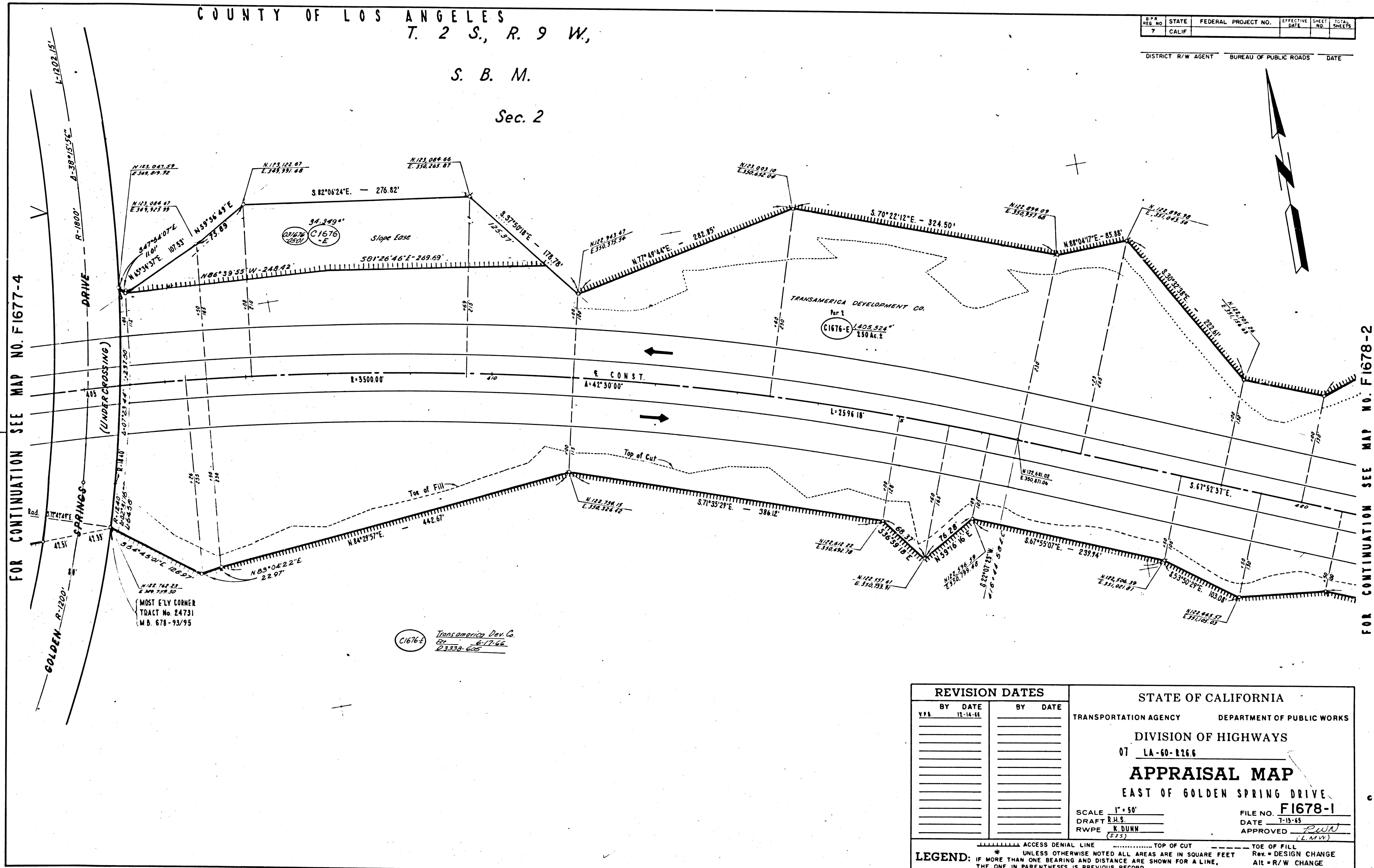


COUNTY OF LOS ANGELES
T. 2 S., R. 9 W.

S. B. M.

Sec. 2

APP. REG. NO.	STATE	FEDERAL PROJECT NO.	EFFECTIVE DATE	SHEET NO.	TOTAL SHEETS
7	CALIF.				
DISTRICT R/W AGENT		BUREAU OF PUBLIC ROADS		DATE	



FOR CONTINUATION SEE MAP NO. F1677-4

FOR CONTINUATION SEE MAP NO. F1678-2

C1676-3 Transamerica Dev. Co.
6-17-66
23338-625

REVISION DATES		STATE OF CALIFORNIA	
BY DATE	BY DATE	TRANSPORTATION AGENCY	DEPARTMENT OF PUBLIC WORKS
11-14-65		DIVISION OF HIGHWAYS	
		07 LA-60-2266	
		APPRAISAL MAP	
		EAST OF GOLDEN SPRING DRIVE	
		SCALE 1" = 50'	FILE NO. F1678-1
		DRAFT R.H.S.	DATE 7-13-65
		RWPE K. DUNN	APPROVED R.W. (L.M.W.)

LEGEND: ACCESS DENIAL LINE TOP OF CUT TOE OF FILL
 UNLESS OTHERWISE NOTED ALL AREAS ARE IN SQUARE FEET
 IF MORE THAN ONE BEARING AND DISTANCE ARE SHOWN FOR A LINE, THE ONE IN PARENTHESES IS PREVIOUS RECORD
 Rev. = DESIGN CHANGE
 All = R/W CHANGE

13

F.M. 21399-1

F.M. 21399-1

16203-0 17

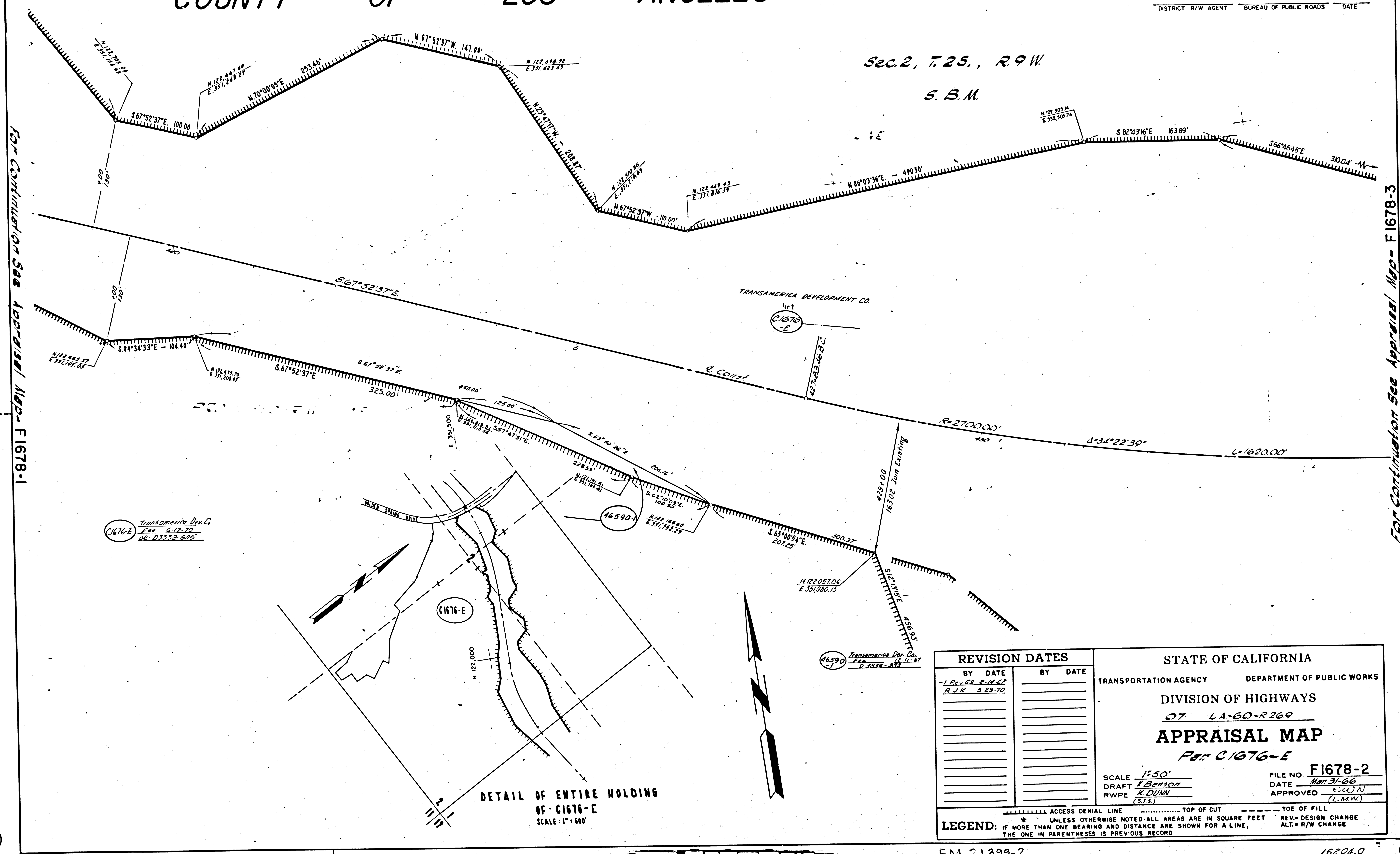
COUNTY OF LOS ANGELES

S.P.R. RES. NO.	STATE	FEDERAL PROJECT NO.	EFFECTIVE DATE	SHEET NO.	TOTAL SHEETS
7	CALIF.				

DISTRICT R/W AGENT BUREAU OF PUBLIC ROADS DATE

Sec. 2, T. 25., R. 9 W.

S. B. M.



FOR CONTINUATION SEE APPRAISAL MAP - F1678-1

FOR CONTINUATION SEE APPRAISAL MAP - F1678-3

C1676-E
Transamerica Dev. Co.
See 6-17-70
OK: D3338-605

46590

46590
Transamerica Dev. Co.
See 7-28-68 - 8-23-68

DETAIL OF ENTIRE HOLDING
OF C1676-E
SCALE: 1" = 660'

REVISION DATES		STATE OF CALIFORNIA	
BY DATE	BY DATE	TRANSPORTATION AGENCY	DEPARTMENT OF PUBLIC WORKS
-1 REVISED 8-14-67		DIVISION OF HIGHWAYS	
R.J.K. 5-29-70		07 LA-60-R269	
		APPRAISAL MAP	
		Part C1676-E	
		SCALE 1"=50'	FILE NO. F1678-2
		DRAFT L. BETSON	DATE Mar 31-66
		RWPE K. DUNN	APPROVED CUN
		(S.T.S.)	(L.M.W.)
----- ACCESS DENIAL LINE ----- TOP OF CUT ----- TOE OF FILL ----- * UNLESS OTHERWISE NOTED ALL AREAS ARE IN SQUARE FEET LEGEND: IF MORE THAN ONE BEARING AND DISTANCE ARE SHOWN FOR A LINE, THE ONE IN PARENTHESES IS PREVIOUS RECORD.		REV. = DESIGN CHANGE ALT. = R/W CHANGE	

14

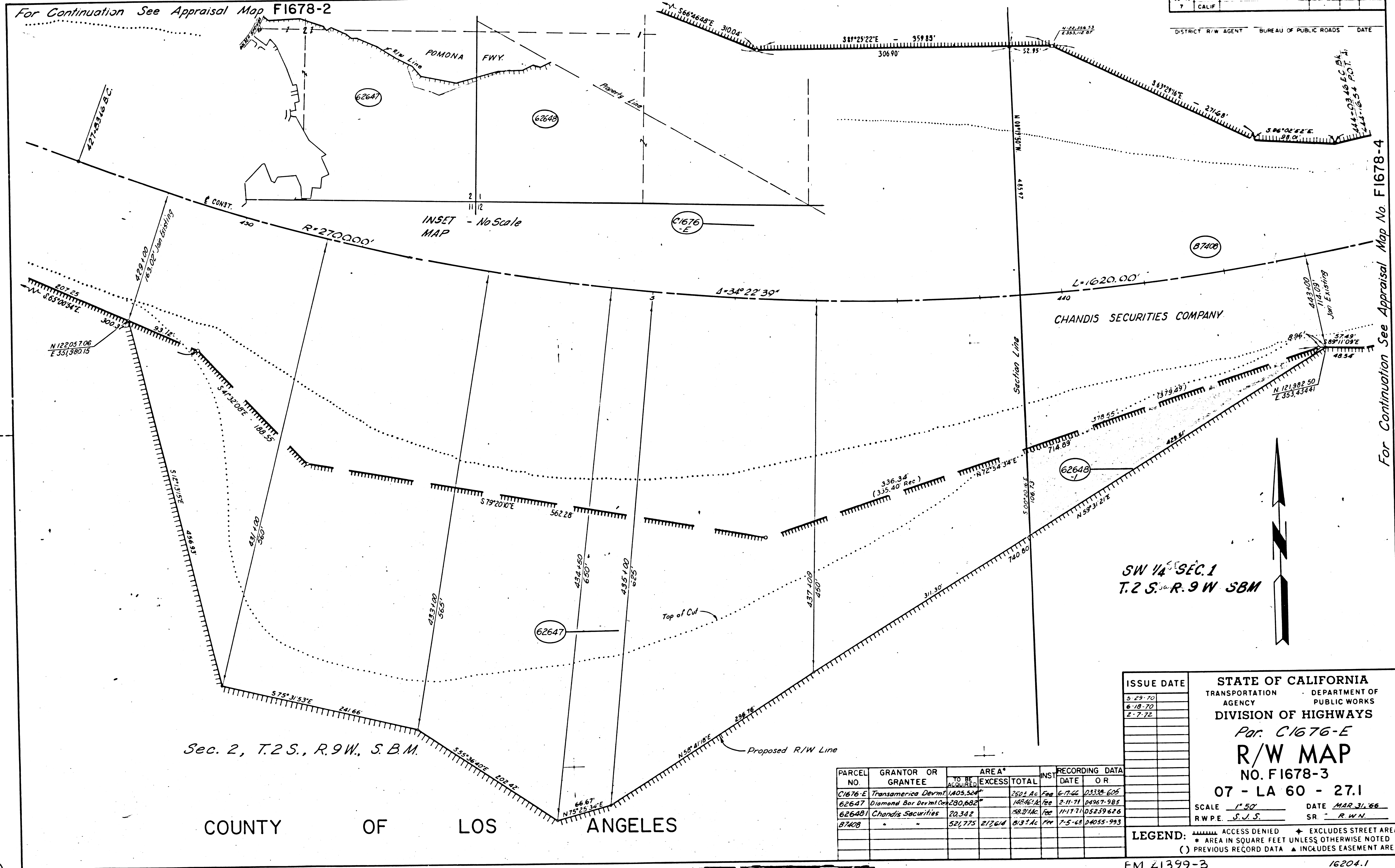
F.M. 21399-2

FM 21399-2

16204.0

14

For Continuation See Appraisal Map F1678-2



For Continuation See Appraisal Map No. F1678-4

ISSUE DATE
5-29-70
6-18-70
2-7-72

STATE OF CALIFORNIA
 TRANSPORTATION DEPARTMENT OF
 AGENCY PUBLIC WORKS
DIVISION OF HIGHWAYS
Par. C1676-E
R/W MAP
NO. F1678-3
07 - LA 60 - 27.1
 SCALE 1"=50' DATE MAR 31, 66
 RW.P.E. S.J.S. SR. R.W.N.

PARCEL NO.	GRANTOR OR GRANTEE	AREA*		INST.	RECORDING DATA	
		TO BE ACQUIRED	EXCESS TOTAL		DATE	O R
C1676-E	Transamerica Devmt	1405.524"	250.1 Ac	Fee	6-7-66	03338-605
62647	Diamond Bar Devmt Co	280,682"	148.461 Ac	Fee	2-11-71	04967-985
62648	Chandis Securities	20,342"	108.074 Ac	Fee	11-17-71	05259-626
87408	"	521,775"	277.64 Ac	Fee	7-5-68	04055-993

LEGEND: ■ ACCESS DENIED * EXCLUDES STREET AREA
 * AREA IN SQUARE FEET UNLESS OTHERWISE NOTED
 () PREVIOUS RECORD DATA ▲ INCLUDES EASEMENT AREA

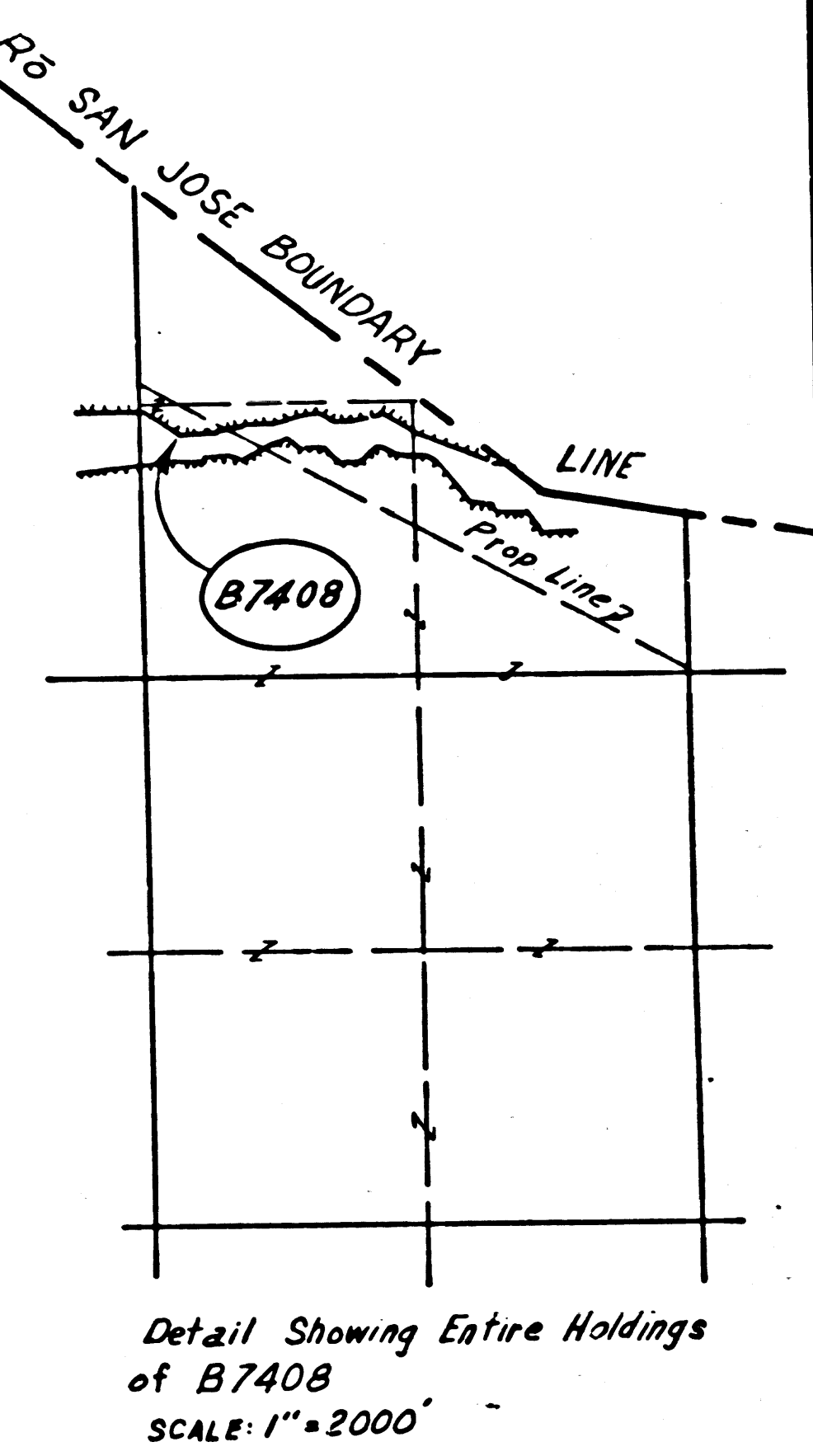
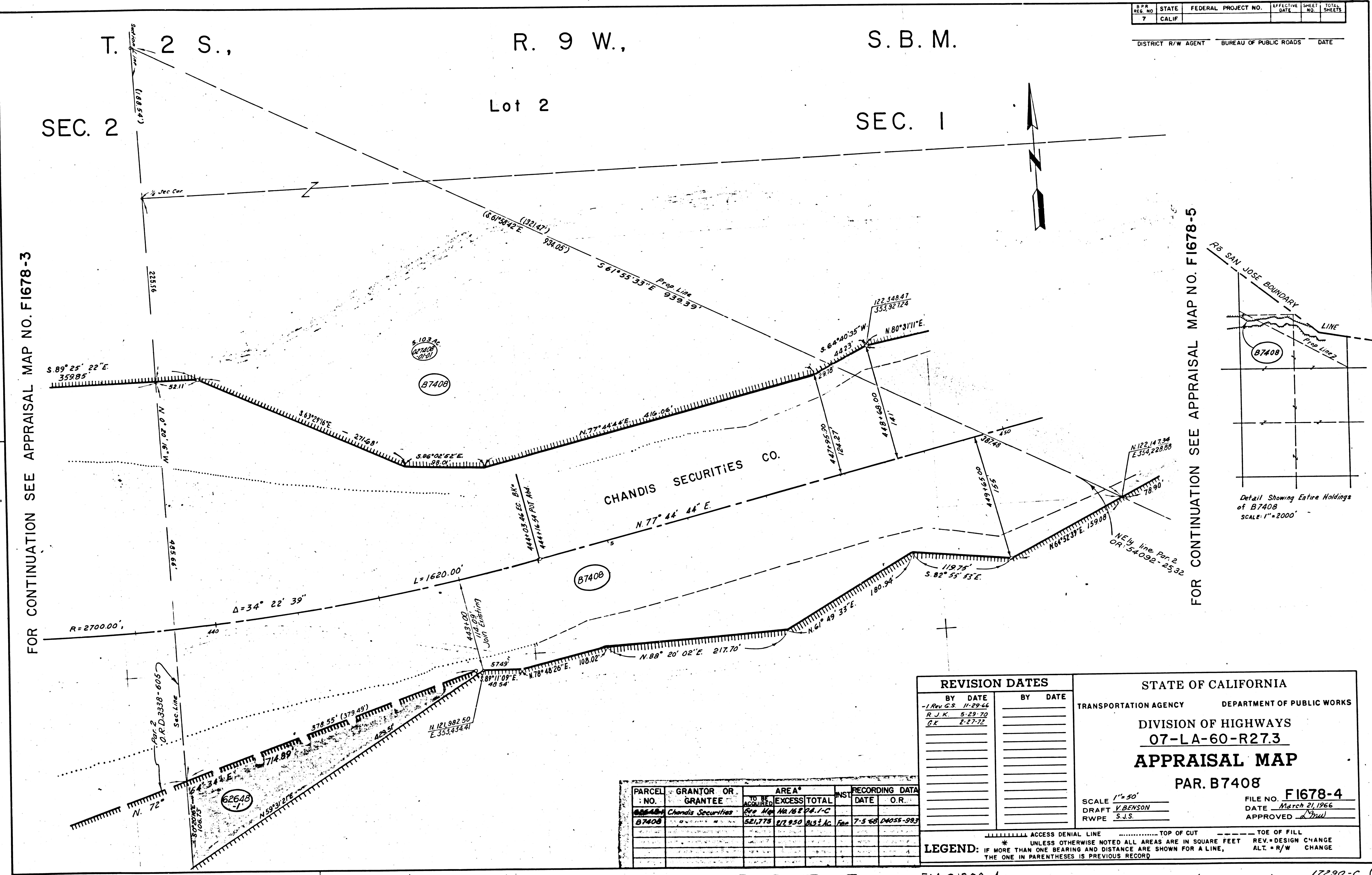
F.M. 21399-3

T. 2 S., R. 9 W., S.B.M.

SEC. 2 Lot 2 SEC. 1

FOR CONTINUATION SEE APPRAISAL MAP NO. F1678-3

FOR CONTINUATION SEE APPRAISAL MAP NO. F1678-5



REVISION DATES		STATE OF CALIFORNIA	
BY DATE	BY DATE	TRANSPORTATION AGENCY	DEPARTMENT OF PUBLIC WORKS
1 Rev. G.S. 11-29-66		DIVISION OF HIGHWAYS 07-LA-60-R27.3 APPRAISAL MAP PAR. B7408	
R. J. K. 5-29-70			
B.K. 2-27-72			
		SCALE 1" = 50'	FILE NO. F1678-4
		DRAFT V. BENSON	DATE March 21, 1966
		RWPE S.J.S.	APPROVED <i>[Signature]</i>

PARCEL NO.	GRANTOR OR GRANTEE	TO BE ACQUIRED	AREA*		RECORDING DATA	
			EXCESS	TOTAL	DATE	O.R.
B7408	Chandis Securities	See Map No. 162-04.1-C			7-5-68	DW55-993
		52,779	27,950	80,729		

LEGEND: ACCESS DENIAL LINE TOP OF CUT TOE OF FILL

* UNLESS OTHERWISE NOTED ALL AREAS ARE IN SQUARE FEET REV. = DESIGN CHANGE

IF MORE THAN ONE BEARING AND DISTANCE ARE SHOWN FOR A LINE, ALT. = R/W CHANGE

THE ONE IN PARENTHESES IS PREVIOUS RECORD

FM 21399-4

COUNTY OF LOS ANGELES

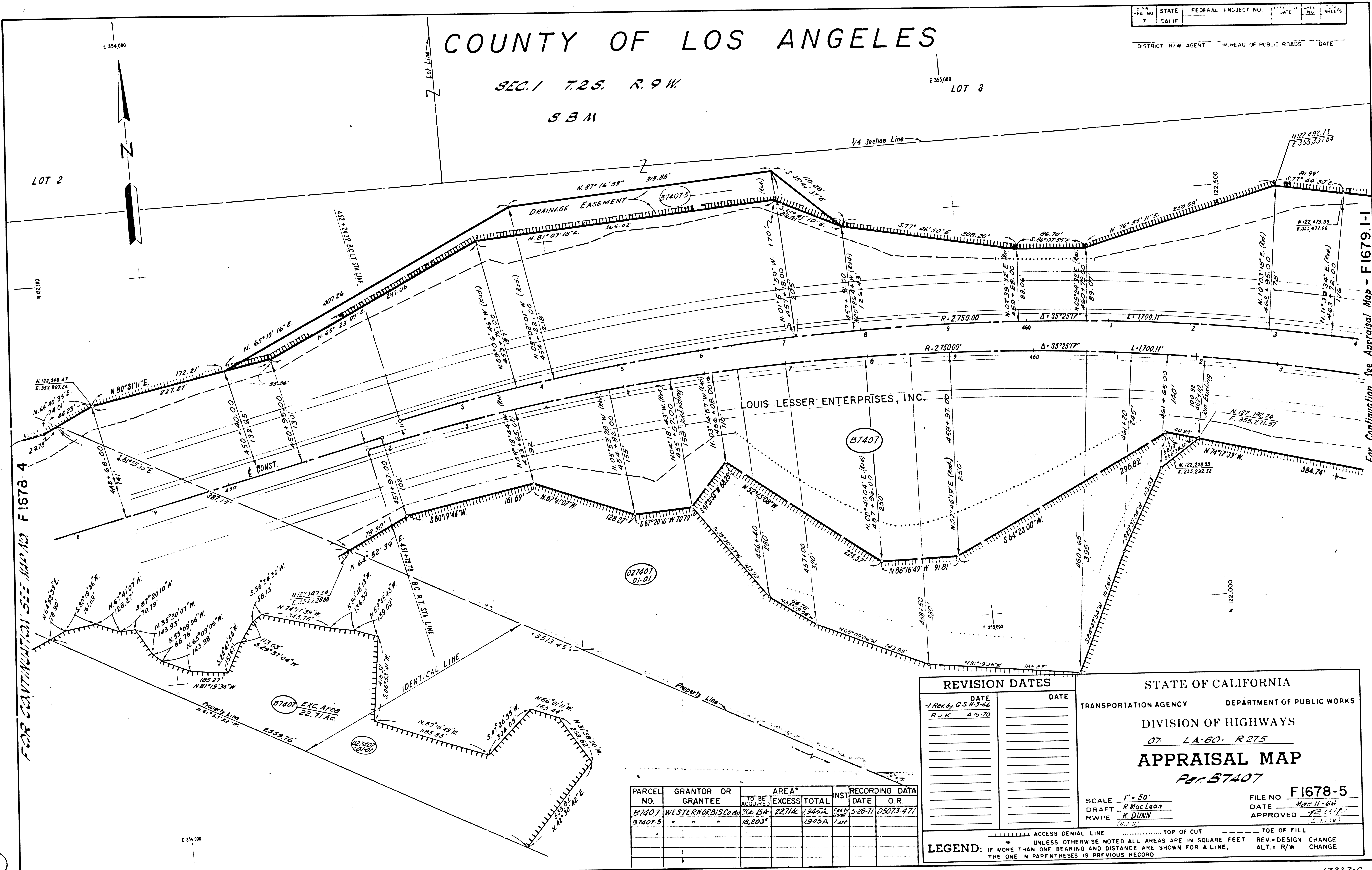
SEC. 1 T. 2 S. R. 9 W.

S B M

LOT 3

FIG. NO.	STATE	FEDERAL PROJECT NO.	DATE	SHEET
7	CALIF.			

DISTRICT R/W AGENT BUREAU OF PUBLIC ROADS DATE



FOR CONTINUATION SEE MAP NO. F1678-4

For Continuation See Appraisal Map - F1679-1-1

PARCEL NO.	GRANTOR OR GRANTEE	TO BE ACQUIRED	AREA* EXCESS TOTAL	INS.	RECORDING DATE	O. R.
B7407	WESTERN OIL & GAS CO.	36.15A	227.16	1945A	5-28-71	05073-471
B7407-5	"	18.203	1945A	1945A		

REVISION DATES	
DATE	DATE
1 Rev. by C.S. 11-3-66	
R.J.K. 4-19-70	

STATE OF CALIFORNIA
 TRANSPORTATION AGENCY DEPARTMENT OF PUBLIC WORKS
 DIVISION OF HIGHWAYS
 OF L.A. 60. R 275
APPRAISAL MAP
 For B7407
 SCALE 1" = 50'
 DRAFT R MacLean
 RWPE H. DUNN
 FILE NO. F1678-5
 DATE Mar 11-68
 APPROVED [Signature]

LEGEND:
 - - - - - ACCESS DENIAL LINE
 - - - - - TOP OF CUT
 - - - - - TOE OF FILL
 * UNLESS OTHERWISE NOTED ALL AREAS ARE IN SQUARE FEET
 IF MORE THAN ONE BEARING AND DISTANCE ARE SHOWN FOR A LINE, REV. DESIGN CHANGE
 THE ONE IN PARENTHESES IS PREVIOUS RECORD ALT. R/W CHANGE

FM 21399-5

FM 21399-5