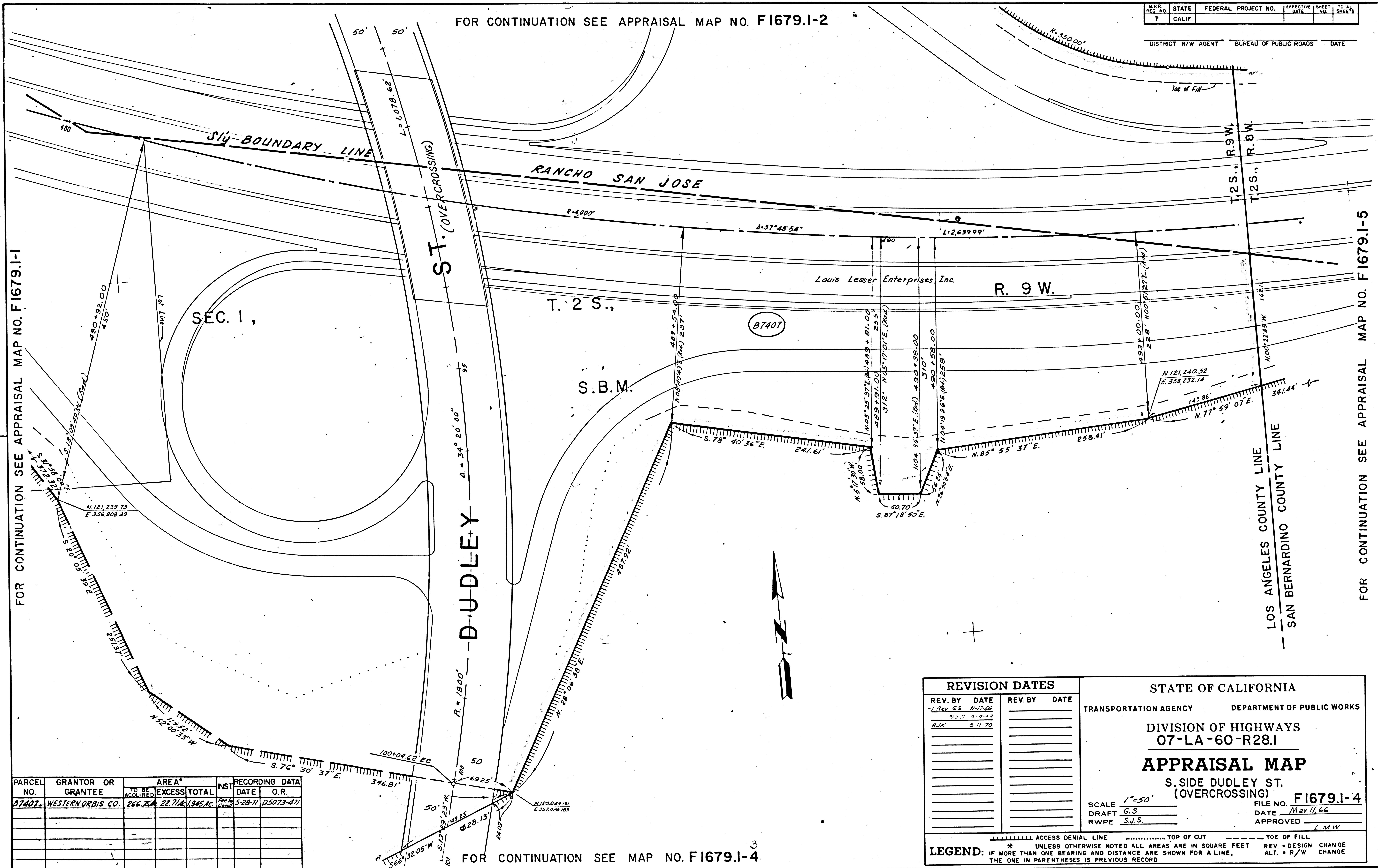








FOR CONTINUATION SEE APPRAISAL MAP NO. F1679.1-2



FOR CONTINUATION SEE APPRAISAL MAP NO. F1679.1-1

FOR CONTINUATION SEE APPRAISAL MAP NO. F1679.1-5

PARCEL NO.	GRANTOR OR GRANTEE	AREA*			RECORDING DATA	
		TO BE ACQUIRED	EXCESS	TOTAL	INST. DATE	O.R.
57407	WESTERN ORBIS CO.	266.75	27.71	1,945.16	5-28-77	D5073-471

<b>REVISION DATES</b> REV. BY DATE -/Rev G.S. 11-12-66 N/S 7 0-0-68 R/JK 5-11-70		STATE OF CALIFORNIA TRANSPORTATION AGENCY DEPARTMENT OF PUBLIC WORKS DIVISION OF HIGHWAYS 07-LA-60-R28.1 <b>APPRAISAL MAP</b> S. SIDE DUDLEY ST. (OVERCROSSING) F1679.1-4 SCALE 1"=50' DRAFT G.S. RWPE S.J.S.	
FILE NO. DATE Mar. 11, 66 APPROVED L.M.W.		* UNLESS OTHERWISE NOTED ALL AREAS ARE IN SQUARE FEET † IF MORE THAN ONE BEARING AND DISTANCE ARE SHOWN FOR A LINE, THE ONE IN PARENTHESES IS PREVIOUS RECORD TOP OF CUT TOE OF FILL REV. * DESIGN CHANGE ALT. * R/W CHANGE	

FM 21400-4

FM 21400-4

17230-C

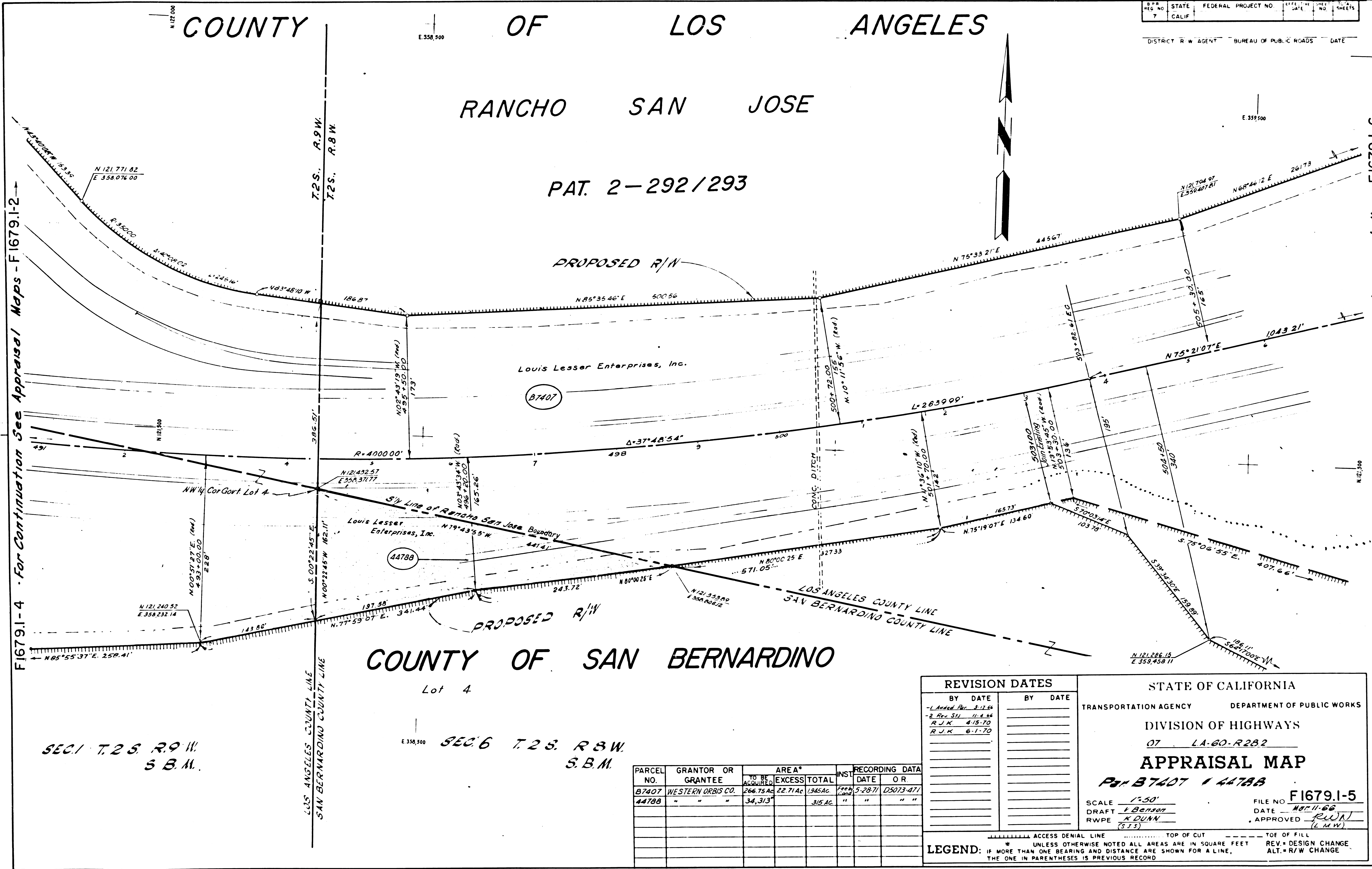
COUNTY OF LOS ANGELES

RANCHO SAN JOSE

PAT. 2-292/293

REG. NO.	STATE	FEDERAL PROJECT NO.	DATE	SHEET NO.	TOTAL SHEETS
7	CALIF.				

DISTRICT R.W. AGENT BUREAU OF PUBLIC ROADS DATE



F1679.1-4 - For Continuation See Appraisal Maps - F1679.1-2

For Continuation See Appraisal Map - F1679.1-6

SEC. 1 T. 2 S. R. 9 W.  
S. B. M.

SEC. 6 T. 2 S. R. 8 W.  
S. B. M.

REVISION DATES	
BY	DATE
-1	Added Par. 3-17-66
-2	Rev. SH 11-8-66
R.J.K.	4-15-70
R.J.K.	6-1-70

STATE OF CALIFORNIA  
 TRANSPORTATION AGENCY DEPARTMENT OF PUBLIC WORKS  
 DIVISION OF HIGHWAYS  
 07 LA-60-R282  
**APPRAISAL MAP**  
 Pat. B7407 & 44788  
 SCALE 1"=50'  
 DRAFT L. Benson  
 RWPE K. DUAN (S.J.S.)  
 FILE NO. F1679.1-5  
 DATE Mar. 11-66  
 APPROVED R.W. (L.M.W.)

PARCEL NO.	GRANTOR OR GRANTEE	TO BE ACQUIRED	AREA*		INST.	RECORDING DATA	
			EXCESS	TOTAL		DATE	O R
B7407	WESTERN ORBIS CO.	266.75 AC	22.71 AC	1945 AC	FRM	5-28-71	D5073-471
44788	"	34.313		315 AC	"	"	"

**LEGEND:** ACCESS DENIAL LINE TOP OF CUT TOE OF FILL  
 \* UNLESS OTHERWISE NOTED ALL AREAS ARE IN SQUARE FEET  
 IF MORE THAN ONE BEARING AND DISTANCE ARE SHOWN FOR A LINE, THE ONE IN PARENTHESES IS PREVIOUS RECORD  
 REV. = DESIGN CHANGE  
 ALT. = R/W CHANGE

FM 21400-5

17231-C (22)

FM 21400-5

(22)



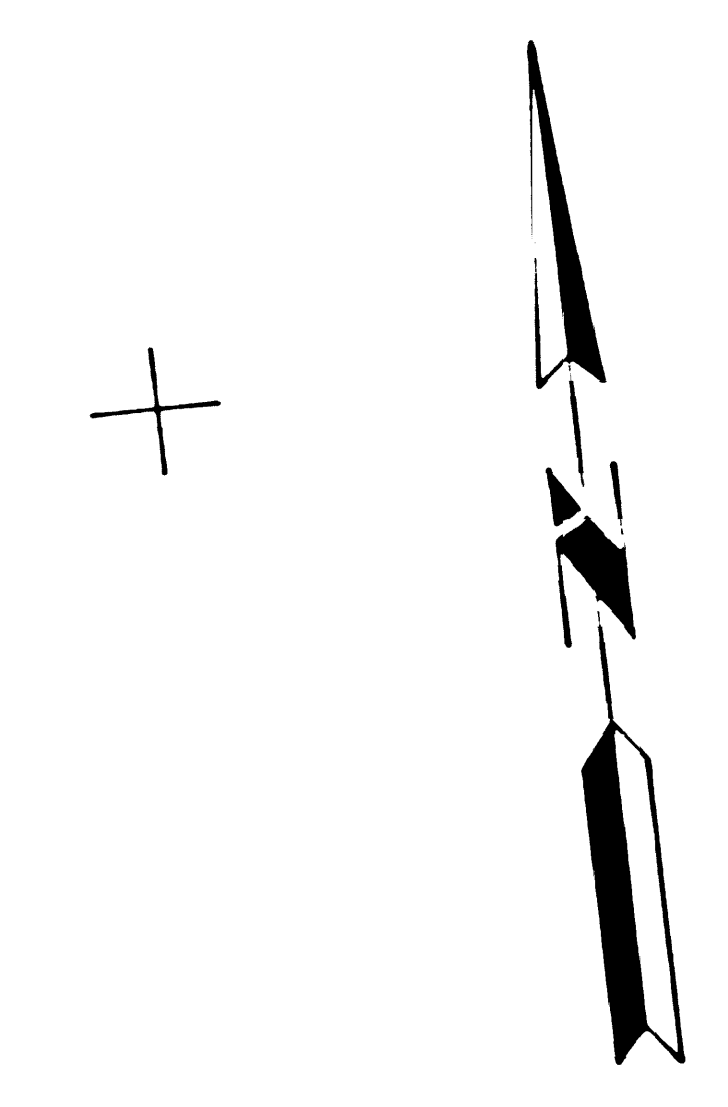
FOR CONTINUATION SEE 17241-C

REC. NO.	STATE	FEDERAL PROJECT NO.	DATE	SHEET NO.	TOTAL SHEETS
7	CALIF.				

# RANCHO SAN JOSE

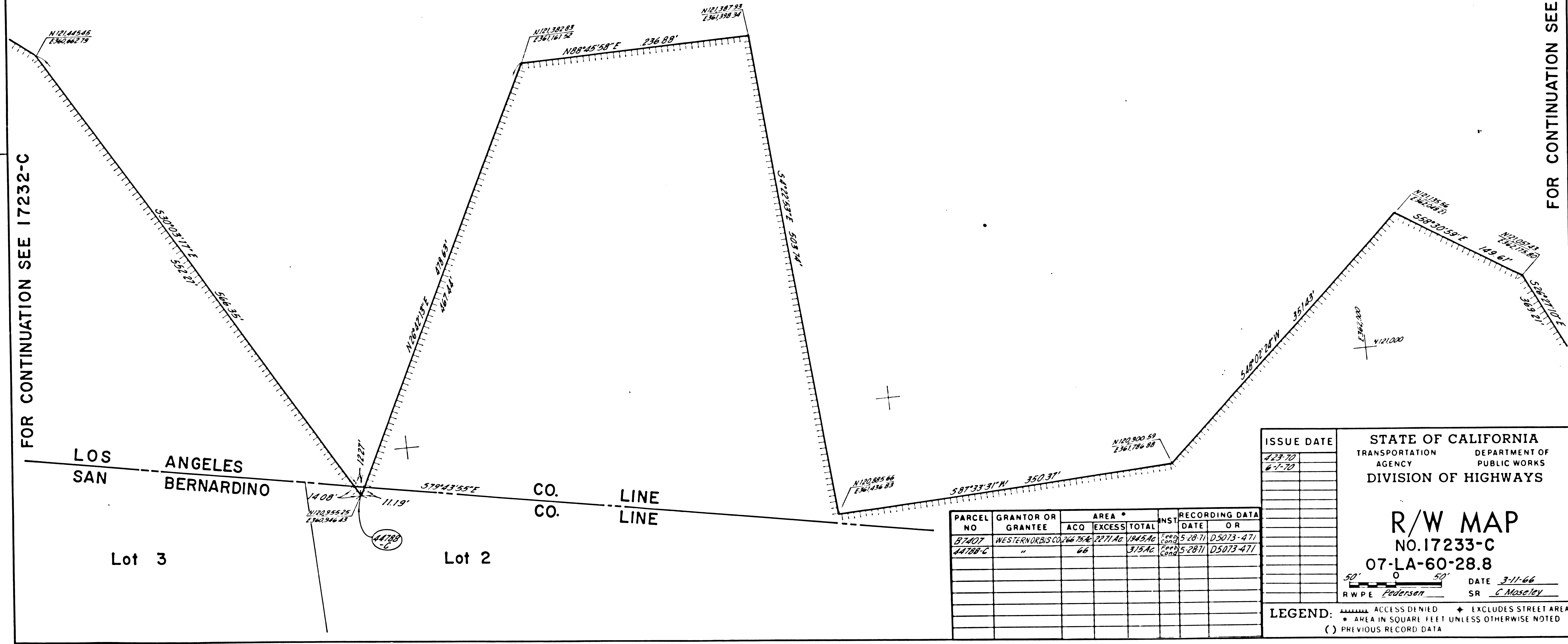
PAT. 2-292/293

DISTRICT R/W AGENT BUREAU OF PUBLIC ROADS DATE



(57407)

FOR CONTINUATION SEE 17234-C



FOR CONTINUATION SEE 17232-C

LOS ANGELES  
SAN BERNARDINO

CO. CO. LINE

Lot 3

Lot 2

ISSUE DATE
1-23-70
6-7-70

STATE OF CALIFORNIA  
 TRANSPORTATION DEPARTMENT OF  
 AGENCY PUBLIC WORKS  
 DIVISION OF HIGHWAYS

**R/W MAP**  
 NO. 17233-C  
 07-LA-60-28.8

DATE 3-11-66  
 RWPE Pedersen SR C. Maselby

LEGEND:  
 ACCESS DENIED  
 AREA IN SQUARE FEET UNLESS OTHERWISE NOTED  
 PREVIOUS RECORD DATA

PARCEL NO	GRANTOR OR GRANTEE	AREA *			INS.	RECORDING DATA	
		ACO	EXCESS	TOTAL		DATE	OR
57407	WESTERNORBIS CO.	266.29 AC	277.1 AC	534.5 AC	5-28-71	Cond	D5073-471
44788-C	"	66		315 AC	5-28-71	Cond	D5073-471

FM 21400-7

FM 21400-7





