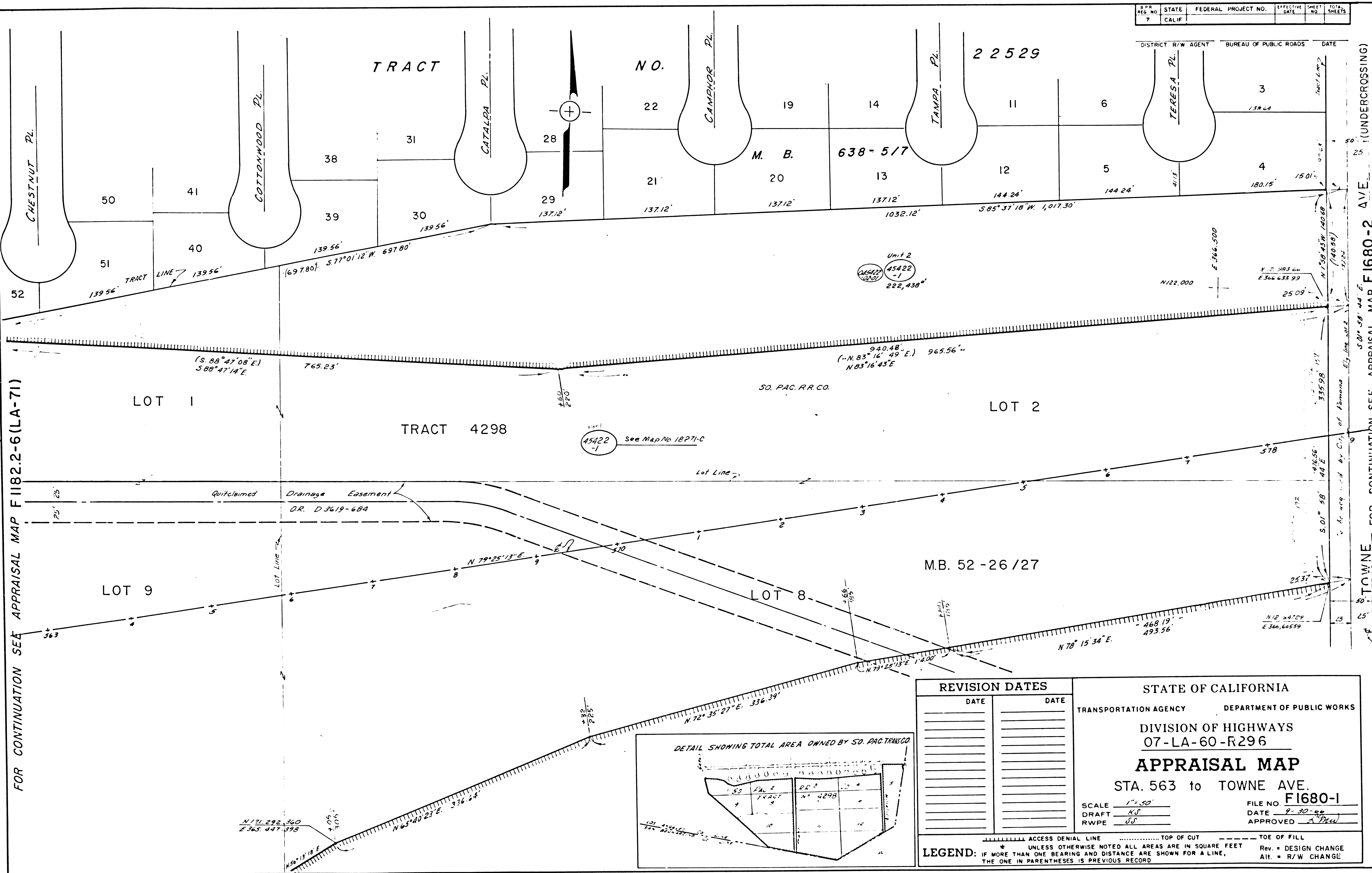


B.P.R. REG. NO.	STATE	FEDERAL PROJECT NO.	EFFECTIVE DATE	SHEET NO.	TOTAL SHEETS
7	CALIF.				



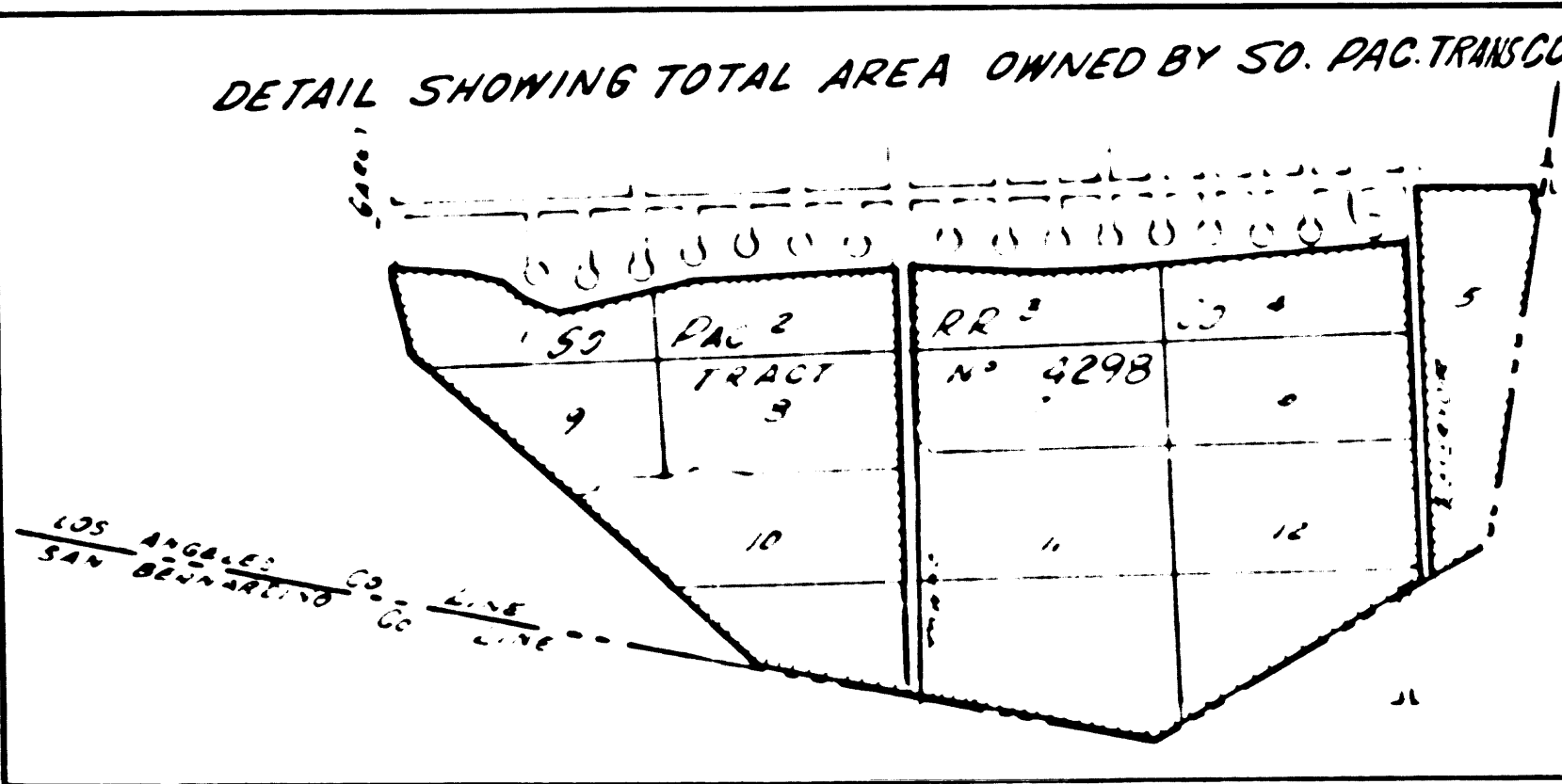
FOR CONTINUATION SEE APPRAISAL MAP F1182.2-6(LA-71)

FOR CONTINUATION SEE APPRAISAL MAP F1680-2 AVE. (UNDERCROSSING) TOWNE

50' 58' 44" E  
50' 58' 44" E  
50' 58' 44" E  
50' 58' 44" E  
50' 58' 44" E

(27)

<b>REVISION DATES</b>		<b>STATE OF CALIFORNIA</b>	
DATE	DATE	TRANSPORTATION AGENCY DEPARTMENT OF PUBLIC WORKS	
		DIVISION OF HIGHWAYS	
		07-LA-60-R296	
<b>APPRAISAL MAP</b>		FILE NO. <b>F1680-1</b>	
STA. 563 to TOWNE AVE.		DATE <b>9-30-55</b>	
SCALE <b>1"=50'</b>		APPROVED <i>A. Drew</i>	
DRAFT <b>K.S.</b>		TOE OF CUT	
RWPE <b>S.S.</b>		TOE OF FILL	



..... ACCESS DENIAL LINE      ..... TOP OF CUT      TOE OF FILL  
 \* UNLESS OTHERWISE NOTED ALL AREAS ARE IN SQUARE FEET      Rev. = DESIGN CHANGE  
 LEGEND: IF MORE THAN ONE BEARING AND DISTANCE ARE SHOWN FOR A LINE,      ALL = R/W CHANGE  
 THE ONE IN PARENTHESES IS PREVIOUS RECORD

FM 21401-1

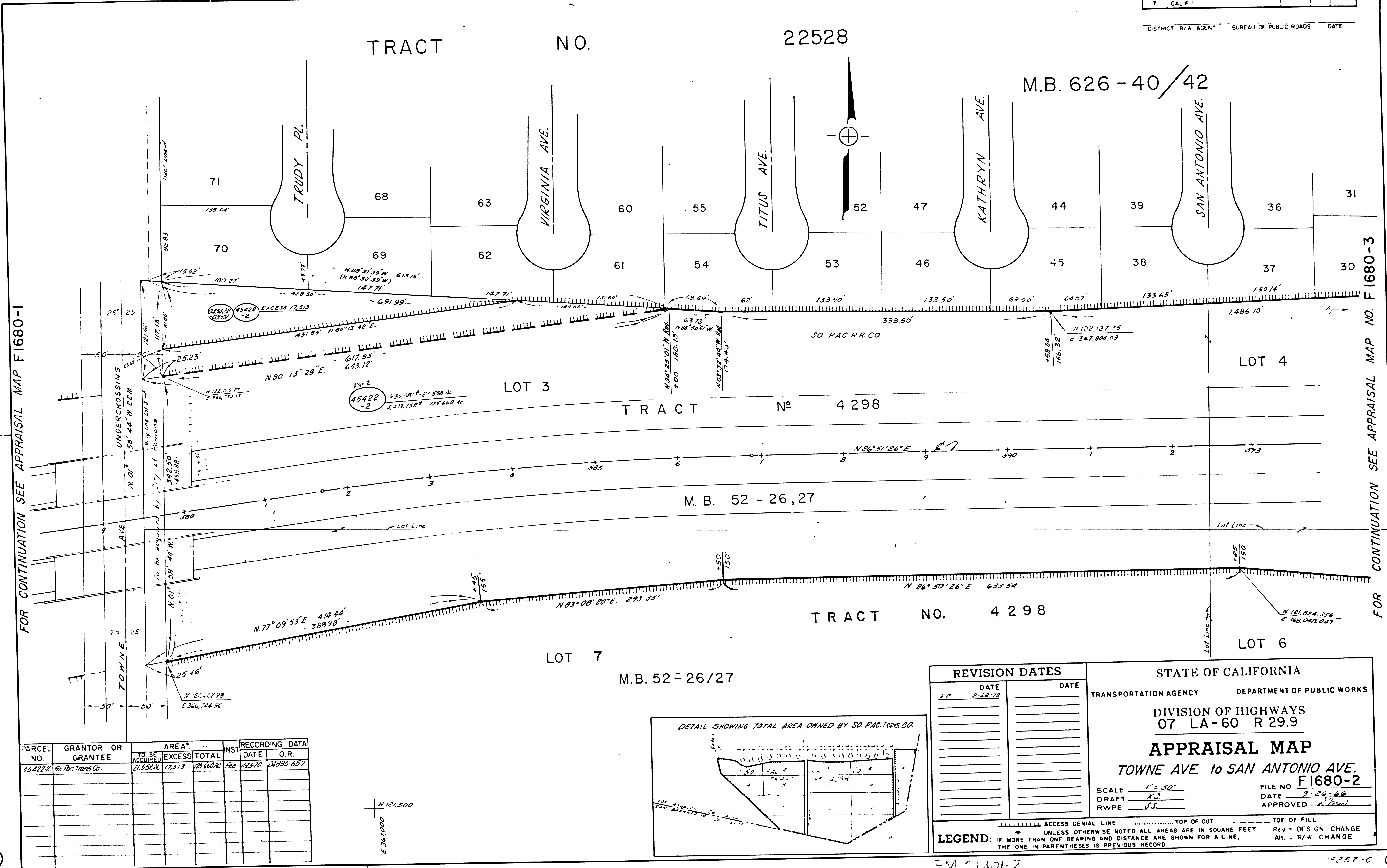
18272-C (27)

F.M. 21401-1

B.P.A. REG. NO.	STATE	FEDERAL PROJECT NO.	EFFECTIVE DATE	SHEET NO.	TOTAL SHEETS
7	CALIF.				

DISTRICT R/W AGENT BUREAU OF PUBLIC ROADS DATE

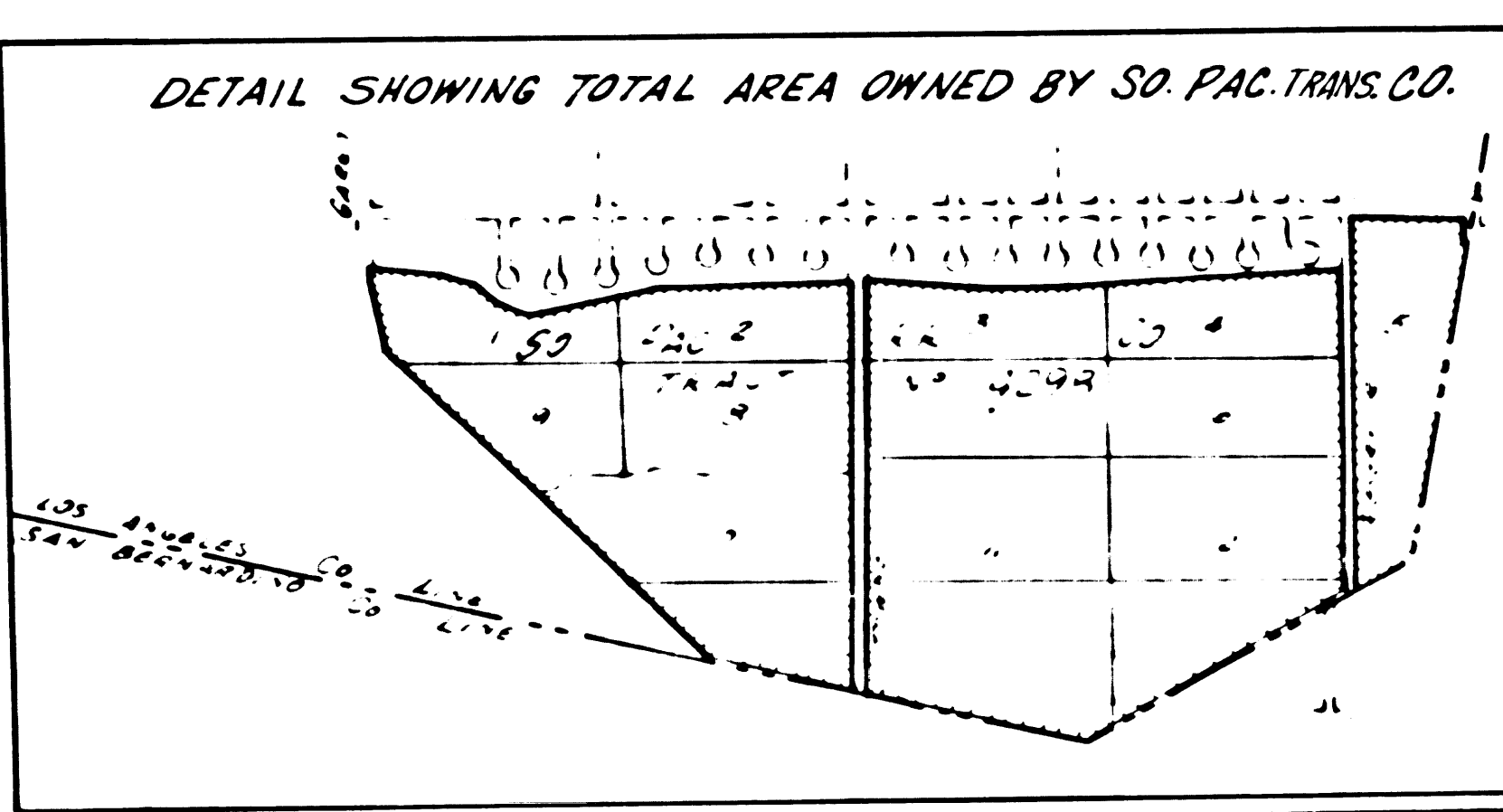
TRACT NO. 22528  
M.B. 626-40/42



FOR CONTINUATION SEE APPRAISAL MAP F1680-1

FOR CONTINUATION SEE APPRAISAL MAP NO. F1680-3

PARCEL NO.	GRANTOR OR GRANTEE	NO. BE. ACQUIS.	AREA* EXCESS TOTAL	INST.	RECORDING DATA DATE OR
454222	So Pac Trans Co	21,558 AC	17,513	25,660 AC	Fee 1/23/70 24895-657



REVISION DATES	
DATE	DATE
L.P. 2-28-72	

STATE OF CALIFORNIA  
TRANSPORTATION AGENCY DEPARTMENT OF PUBLIC WORKS  
DIVISION OF HIGHWAYS  
07 LA-60 R 29.9  
**APPRAISAL MAP**  
TOWNE AVE. to SAN ANTONIO AVE.  
F1680-2  
SCALE 1" = 50'  
DRAFT K.S.  
RWPE J.S.  
FILE NO. 9-29-66  
DATE 9-29-66  
APPROVED [Signature]

LEGEND: IF MORE THAN ONE BEARING AND DISTANCE ARE SHOWN FOR A LINE, THE ONE IN PARENTHESES IS PREVIOUS RECORD  
ACCESS DENIAL LINE TOP OF CUT TOE OF FILL  
Rev. = DESIGN CHANGE  
All. = R/W CHANGE

28

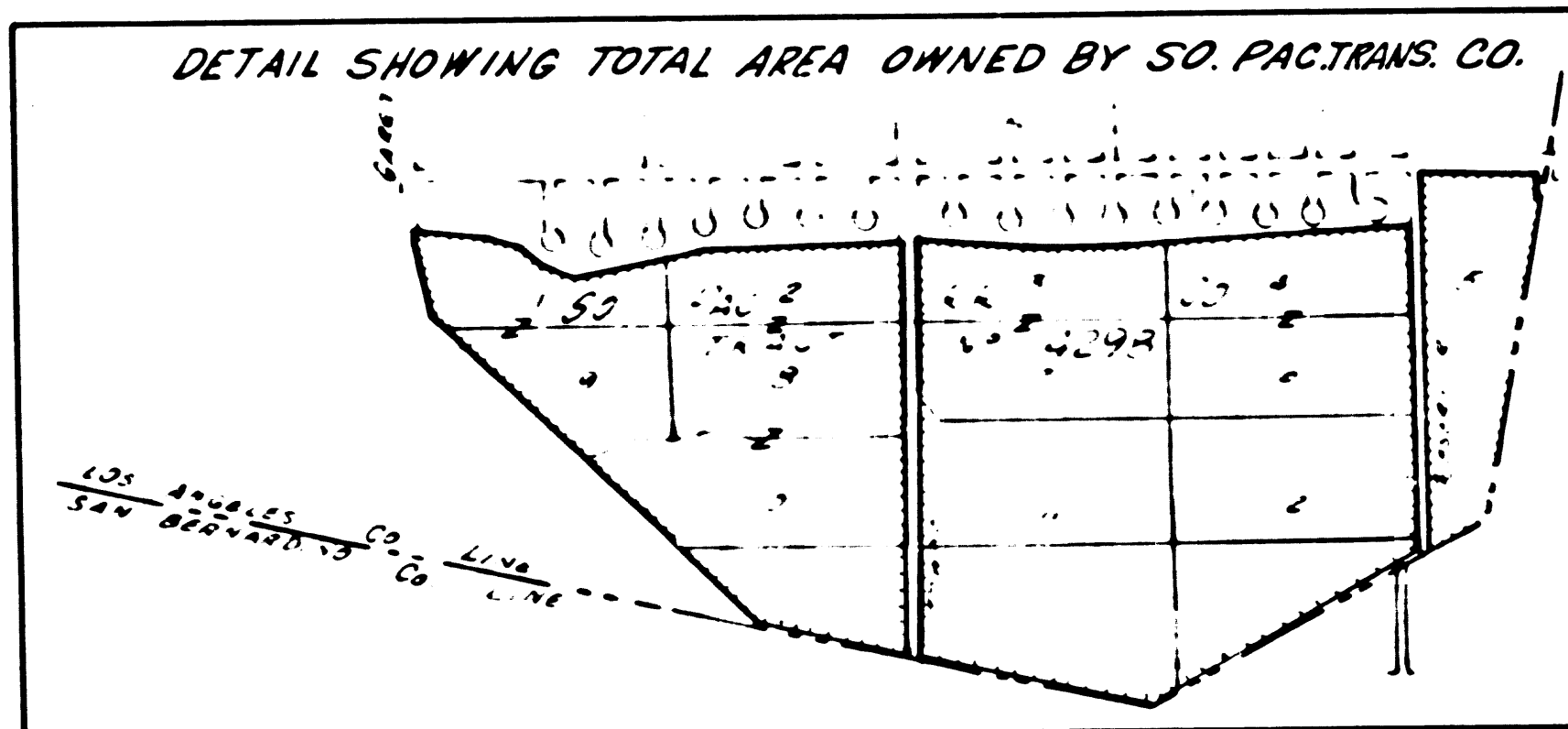
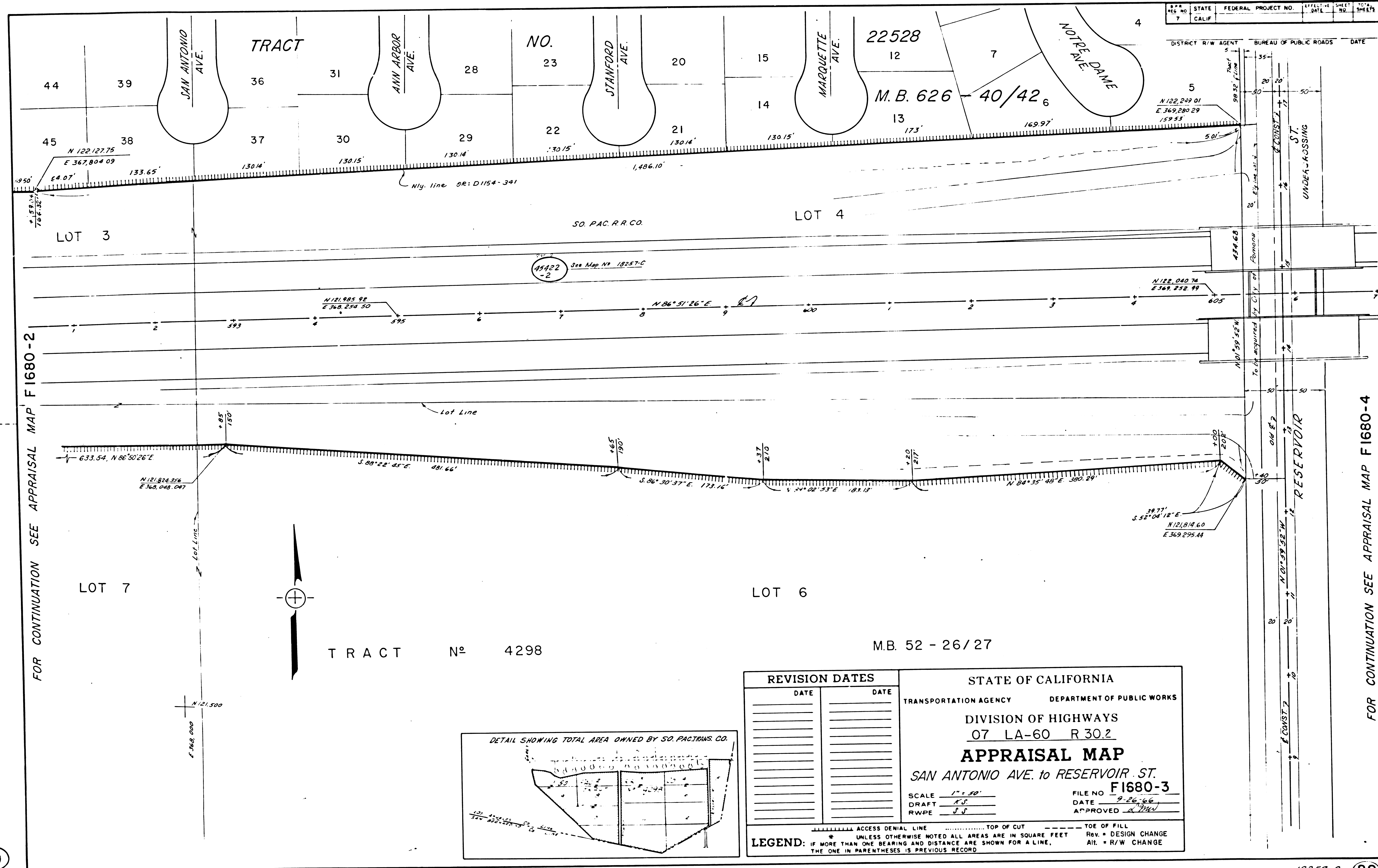
28

F.M. 21401-2

FM 21401-2

9257-C



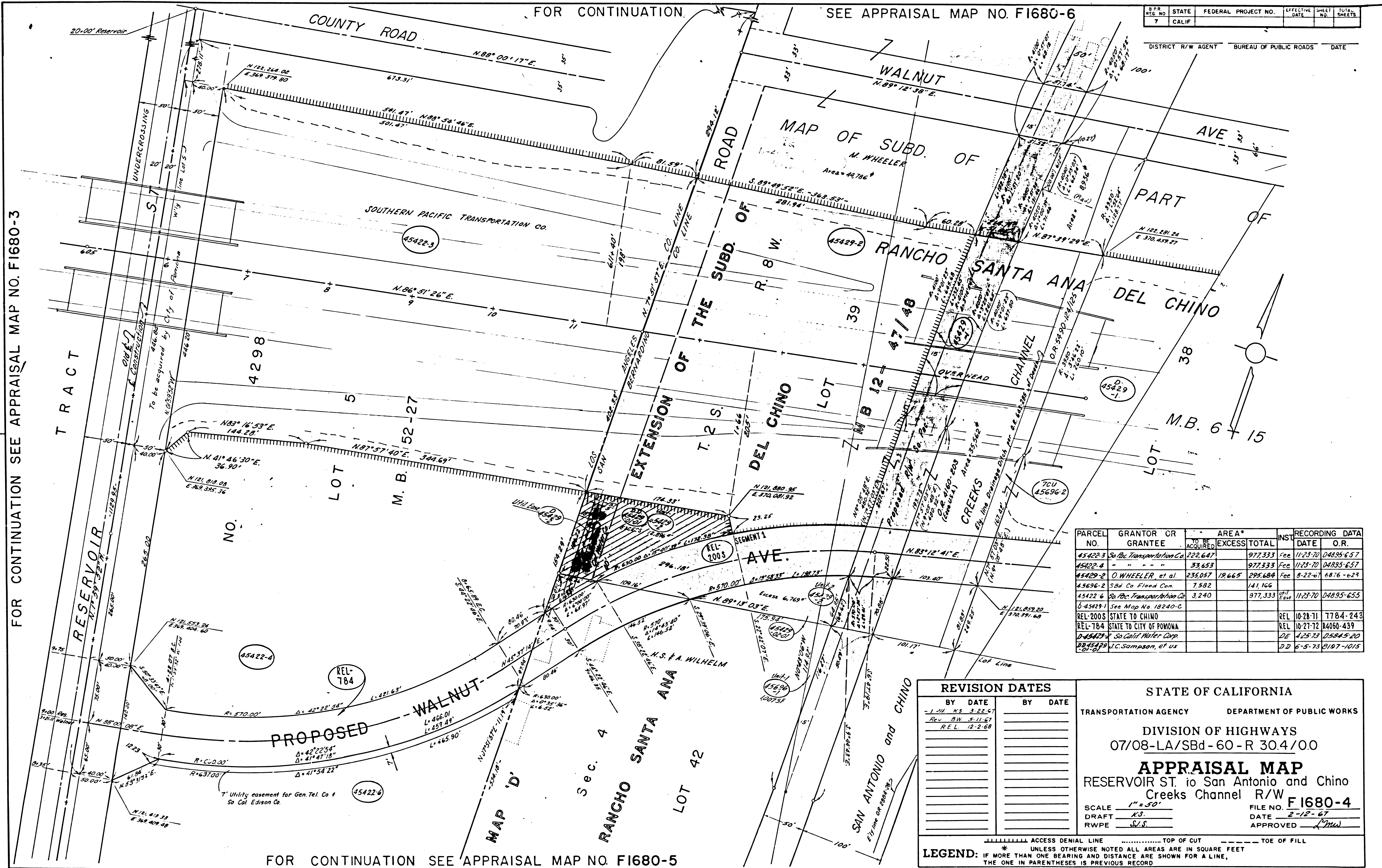


REVISION DATES	
DATE	DATE

STATE OF CALIFORNIA  
 TRANSPORTATION AGENCY DEPARTMENT OF PUBLIC WORKS  
 DIVISION OF HIGHWAYS  
 07 LA-60 R 30.2  
**APPRAISAL MAP**  
 SAN ANTONIO AVE. to RESERVOIR ST.  
**F1680-3**  
 SCALE 1" = 50'  
 DRAFT K.S.  
 RWPE J.J.  
 FILE NO. 9-26-66  
 DATE 9-26-66  
 APPROVED *[Signature]*

..... ACCESS DENIAL LINE      ..... TOP OF CUT      ..... TOE OF FILL  
 \* UNLESS OTHERWISE NOTED ALL AREAS ARE IN SQUARE FEET      Rev. = DESIGN CHANGE  
**LEGEND:** IF MORE THAN ONE BEARING AND DISTANCE ARE SHOWN FOR A LINE,      Alt. = R/W CHANGE  
 THE ONE IN PARENTHESES IS PREVIOUS RECORD





DISTRICT	STATE	FEDERAL PROJECT NO.	EFFECTIVE DATE	SHEET NO.	TOTAL SHEETS
7	CALIF				

PARCEL NO.	GRANTOR OR GRANTEE	TO BE ACQUIRED	AREA*	EXCESS	TOTAL	INST.	RECORDING DATE	O.R.	
45422-3	So Pac Transportation Co		222,647		977,333	Fee	11-23-70	04895-657	
45422-4	"		33,653		977,333	Fee	11-23-70	04895-657	
45422-2	O WHEELER et al		235,057	19,665	295,684	Fee	8-22-67	6876-629	
45696-2	Sbd Co Flood Con.		7,582		141,166				
45422-6	So Pac Transportation Co		3,240		977,333	Offt	11-23-70	04895-655	
45439-1	See Map No. 18240-C								
REL-200S	STATE TO CHINO						REL	10-28-71	7784-248
REL-784	STATE TO CITY OF POMONA						REL	10-21-72	04080-439
45422-7	So Calif Water Corp					DE	4-25-73	05845-20	
45422-8	J.C. Sampson, et ux					DD	5-5-73	0197-1015	

REVISION DATES	
BY DATE	BY DATE
- J.M. K.S. 3-22-67	
REV. B.W. 5-11-67	
R.E.L. 12-2-68	

STATE OF CALIFORNIA  
 TRANSPORTATION AGENCY DEPARTMENT OF PUBLIC WORKS  
 DIVISION OF HIGHWAYS  
 07/08-LA/Sbd-60-R 30.4/0.0  
**APPRAISAL MAP**  
 RESERVOIR ST. to San Antonio and Chino  
 Creeks Channel R/W  
 F1680-4  
 SCALE 1" = 50'  
 DRAFT K.S.  
 RWPE S.S.  
 FILE NO. F1680-4  
 DATE 2-12-67  
 APPROVED [Signature]

ACCESS DENIAL LINE TOP OF CUT TOE OF FILL  
 \* UNLESS OTHERWISE NOTED ALL AREAS ARE IN SQUARE FEET  
 † IF MORE THAN ONE BEARING AND DISTANCE ARE SHOWN FOR A LINE, THE ONE IN PARENTHESES IS PREVIOUS RECORD

FOR CONTINUATION SEE APPRAISAL MAP NO. F1680-3

FOR CONTINUATION SEE APPRAISAL MAP NO. F1680-6

FOR CONTINUATION SEE APPRAISAL MAP NO. F1680-5

F.M. 21401-4