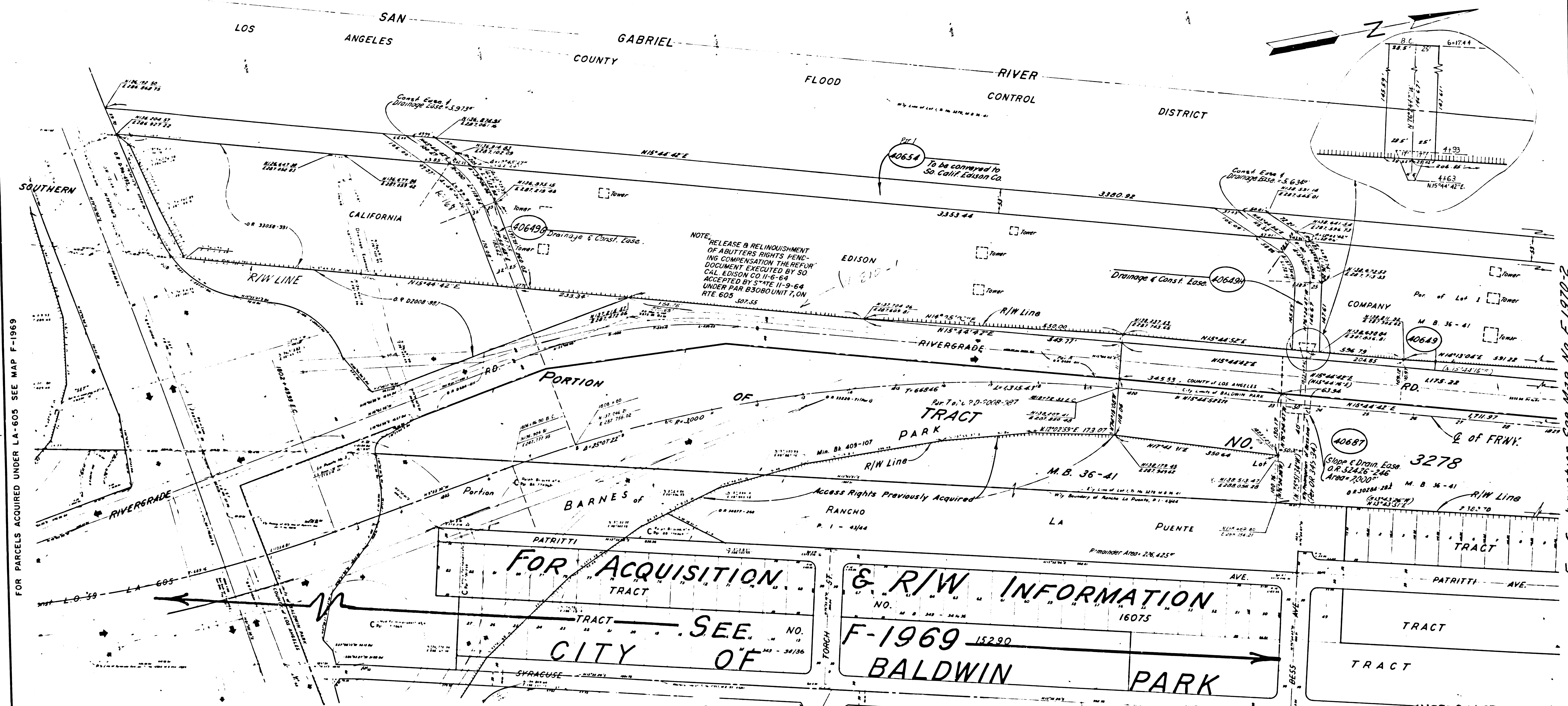


COUNTY OF LOS ANGELES

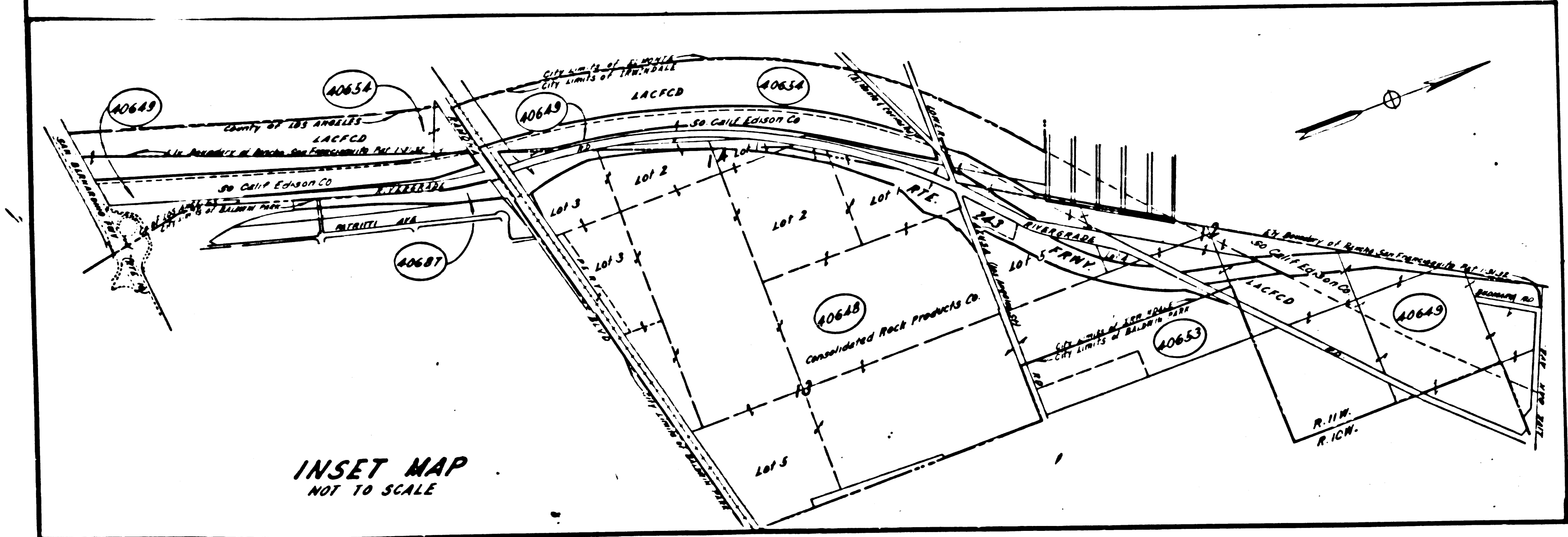
T-605-2(10) 130 3-269 3

BUREAU OF PUBLIC WORKS DATE



FOR PARCELS ACQUIRED UNDER LA-605 SEE MAP F-1969

For Continuation See Map No. F-1970-2



Excluding Sheet Area

PARCEL NO.	GRANTOR OR GRANTEE	TO BE ACQUIRED	AREA* EXCESS TOTAL	INST.	RECORDING DATE	O.R.
40687	Assoc. So. Inv. Co.	460,561	460,561	Fee	7-27-70	04783-636
40649	So. Cal. Edison Co.	12,212		Fee		
40649a	So. Cal. Edison Co.	17,247		Fee		
40649b	So. Cal. Edison Co.	13,960		Fee		
40654	LACFCO	241,477		Fee		

LEGEND:
 ----- ACCESS DENIAL LINE
 TOP OF CUT
 ----- TOE OF FILL
 * UNLESS OTHERWISE NOTED ALL AREAS ARE IN SQUARE FEET
 IF MORE THAN ONE BEARING AND DISTANCE ARE SHOWN FOR A LINE, THE ONE IN PARENTHESES IS PREVIOUS RECORD

STATE OF CALIFORNIA
 HIGHWAY TRANSPORTATION AGENCY
 DEPARTMENT OF PUBLIC WORKS
 Division of Highways

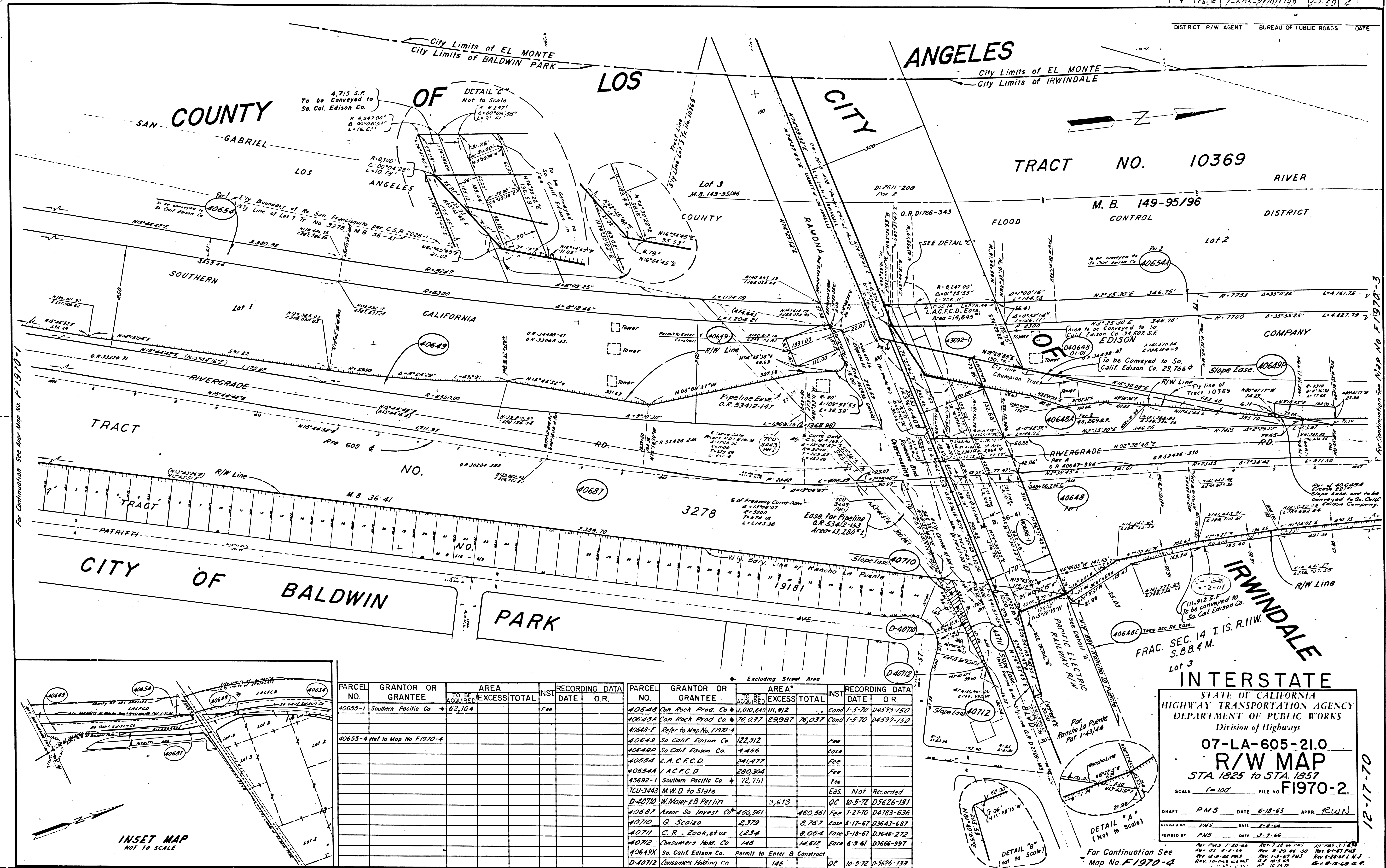
7 - LA - 605 - 20.7
R/W MAP
 SAN BERNARDINO FREEWAY
 TO STA. 1829+00
 SCALE 1"=100' FILE NO. F1970-1

DRAFT PMS DATE 6-21-68 APPR. RWN
 REVISION BY PMS DATE 1-12-66
 REVISION BY PMS DATE 7-18-66

REV. 7-28-66 (70) REV. 6-28-67 (N.J.)
 REV. 7-2-66 (PMS) REV. 8-28-70 (M.H.)
 REV. 7-28-67 (1-66) REV. 7-2-71 (J.D.)
 REV. 7-2-71 (1-66)

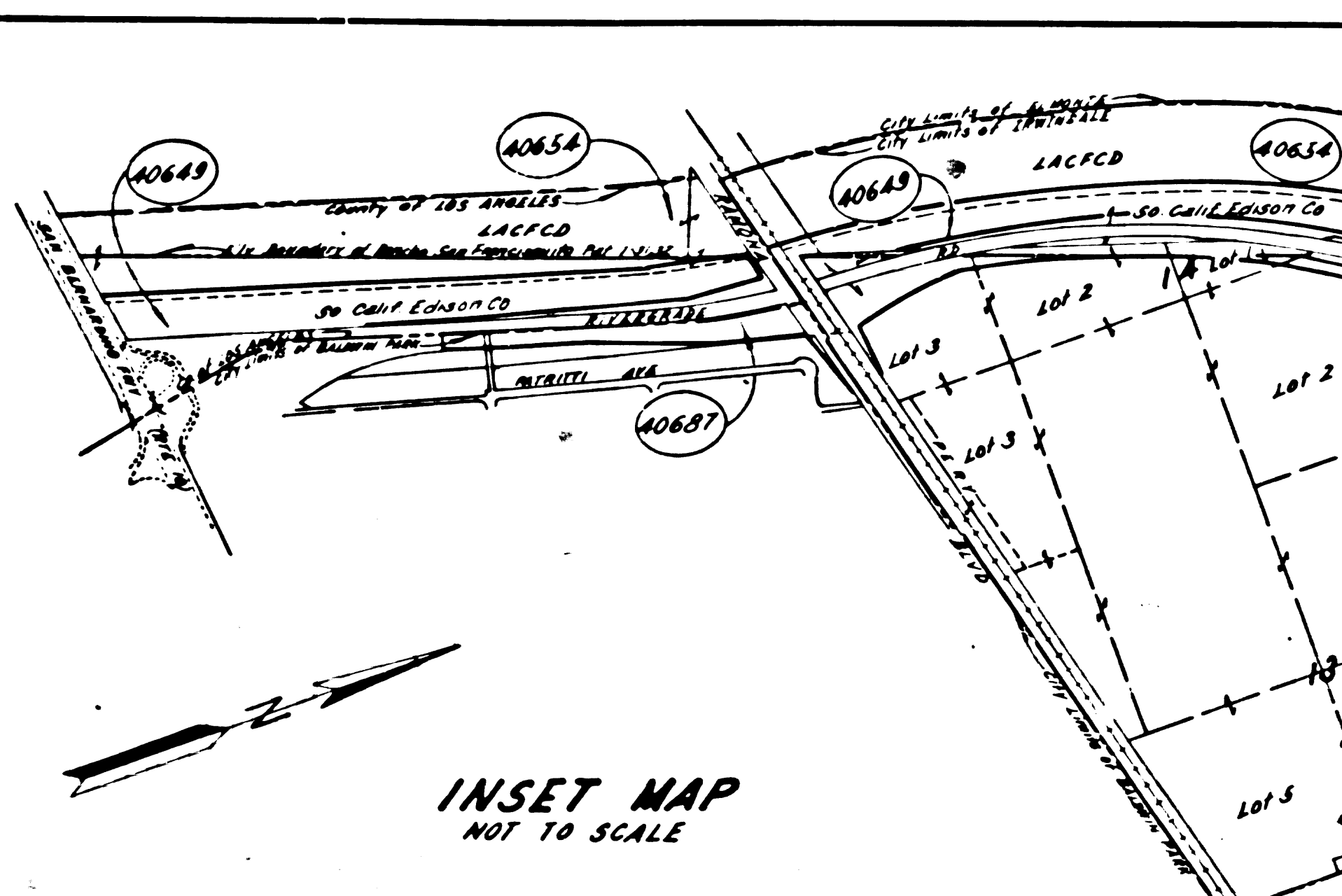
FM 21425-1

FM 21425-1



For Continuation See Map No. F-1970-1

For Continuation See Map No. F-1970-3



PARCEL NO.	GRANTOR OR GRANTEE	AREA		INST.	RECORDING DATA	
		TO BE ACQUIRED	EXCESS TOTAL		DATE	O.R.
40655-1	Southern Pacific Co	62,104		Fee		
40655-4	Ref to Map No. F-1970-4					
40648	San Rock Prod. Co	1,010,610	111,912	Cont	1-5-70	D4599-150
40648A	San Rock Prod. Co	78,237	29,997	Cont	1-5-70	D4599-150
40648-E	Refer to Map No. F-1970-4					
40649	So Calif Edison Co	122,912		Fee		
40649D	So Calif Edison Co	4,466		Ease		
40634	L.A.C.F.C.D.	241,477		Fee		
40634A	L.A.C.F.C.D.	280,304		Fee		
43692-1	Southern Pacific Co	72,751		Fee		
TCU-3443	M.W.D. to State			Eas	Not Recorded	
D-40710	W. Moore & B. Perlit	3,613		QC	10-5-72	D5626-131
40687	Assoc So Invest Co	400,561	480,561	Fee	7-27-70	D4783-636
40710	G. Scalone	8,767		Ease	5-17-67	D3643-687
40711	C.R. Zook, et ux	1,234		Ease	5-18-67	D3646-272
40712	Consumers Hold. Co	148	14,612	Ease	6-3-67	D3666-997
40649X	So. Calif. Edison Co.			Permit to Enter B Construct		
D-40712	Consumers Holding Co	148		QC	10-5-72	D-5476-133

INTERSTATE
 STATE OF CALIFORNIA
 HIGHWAY TRANSPORTATION AGENCY
 DEPARTMENT OF PUBLIC WORKS
 Division of Highways

07-LA-605-21.0
R/W MAP
 STA. 1825 to STA. 1857
 SCALE 1"=100' FILE NO. F1970-2

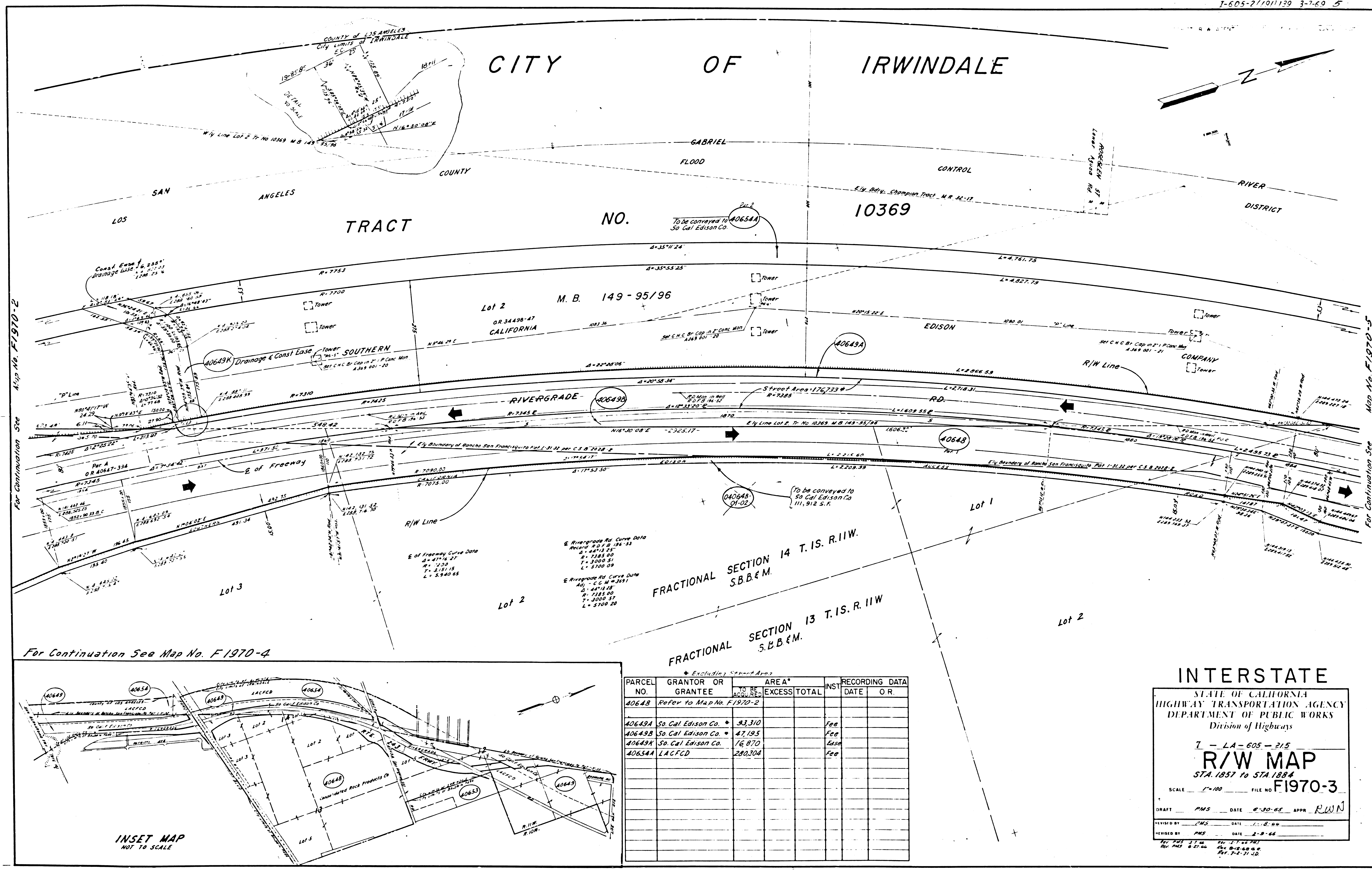
DRAFT: PMS DATE: 6-18-65 APPR: RWN
 REVISION BY: PMS DATE: 2-8-66
 REVISION BY: PMS DATE: 3-7-66

For Continuation See Map No. F-1970-4

F.M. 21425-2

FM 21425-2

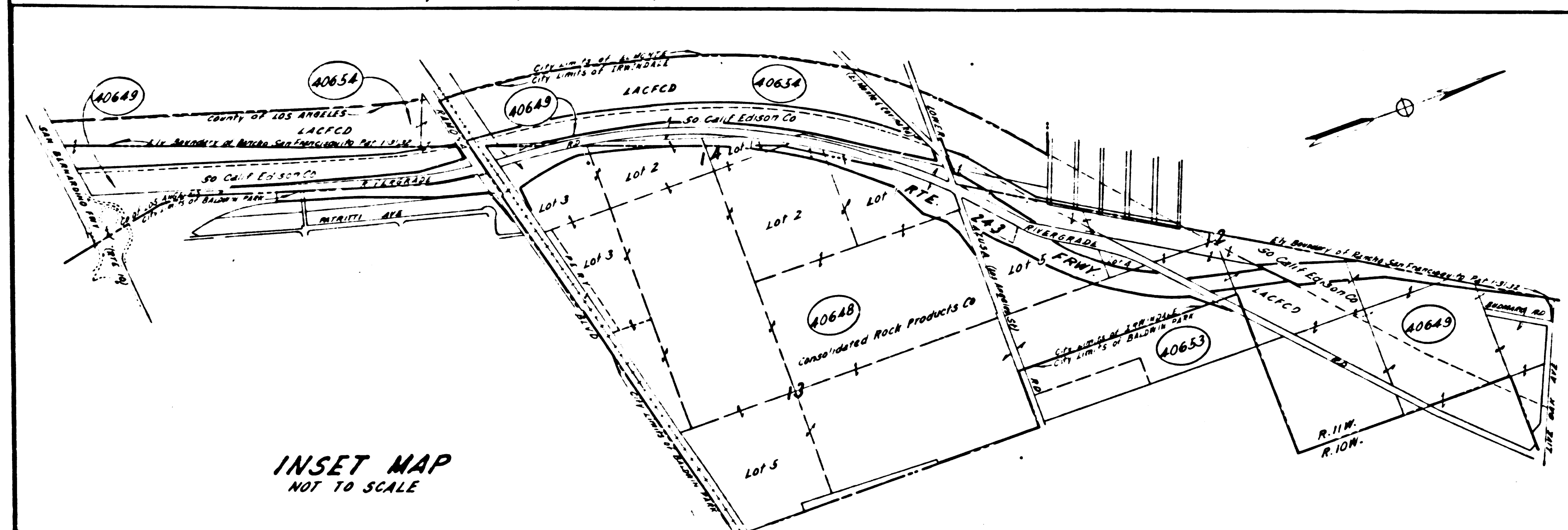
12-17-70



For Continuation See Map No. F1970-2

For Continuation See Map No. F1970-5

For Continuation See Map No. F1970-4



INSET MAP
NOT TO SCALE

* Excluding Covered Areas

PARCEL NO.	GRANTOR OR GRANTEE	TO BE ACQUIRED	AREA*		INST.	RECORDING DATA	
			EXCESS	TOTAL		DATE	O.R.
40648	Refer to Map No. F1970-2						
40649A	So. Cal. Edison Co.		33,310			Fee	
40649B	So. Cal. Edison Co.		47,195			Fee	
40649C	So. Cal. Edison Co.		16,870			Ease	
40654A	LACFCO		280,304			Fee	

INTERSTATE
STATE OF CALIFORNIA
HIGHWAY TRANSPORTATION AGENCY
DEPARTMENT OF PUBLIC WORKS
Division of Highways

7 - LA - 605 - 215
R/W MAP
STA. 1857 to STA. 1884
F1970-3

SCALE 1"=100' FILE NO.

DRAFT PMS DATE 6-30-65 APPR. RWN

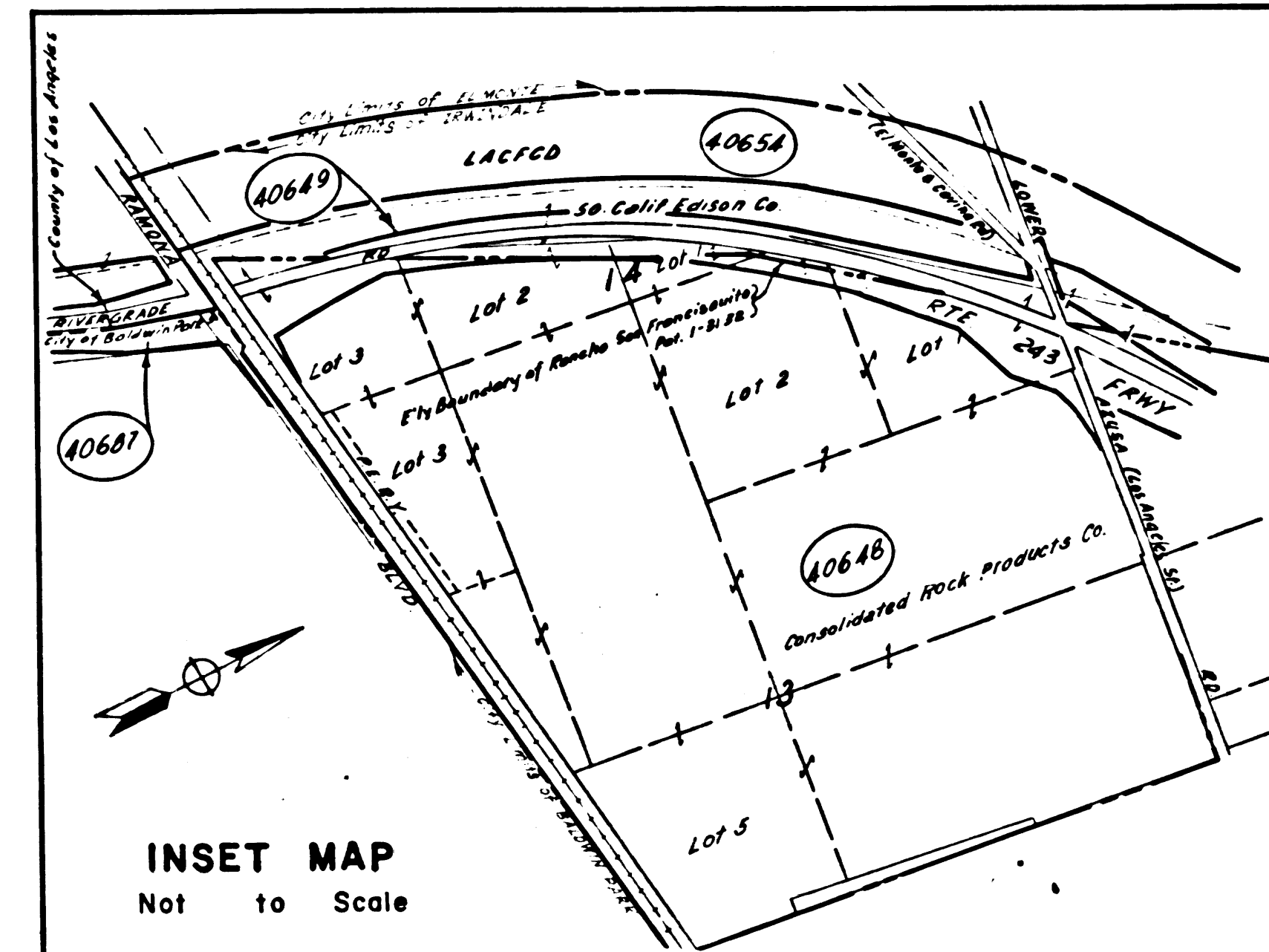
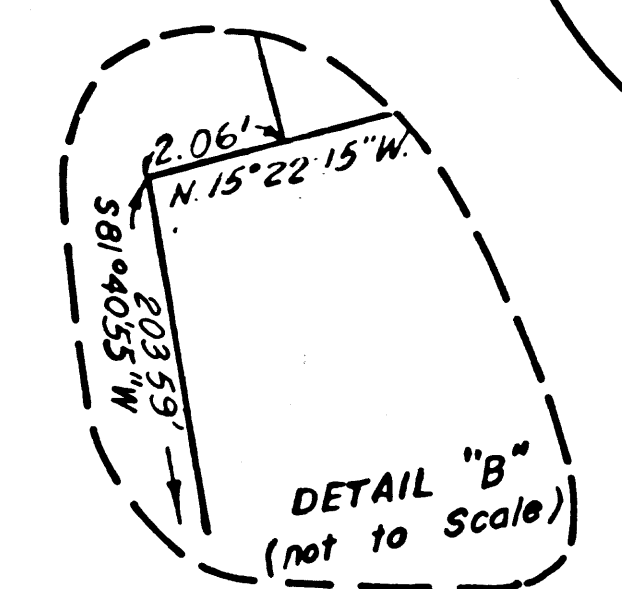
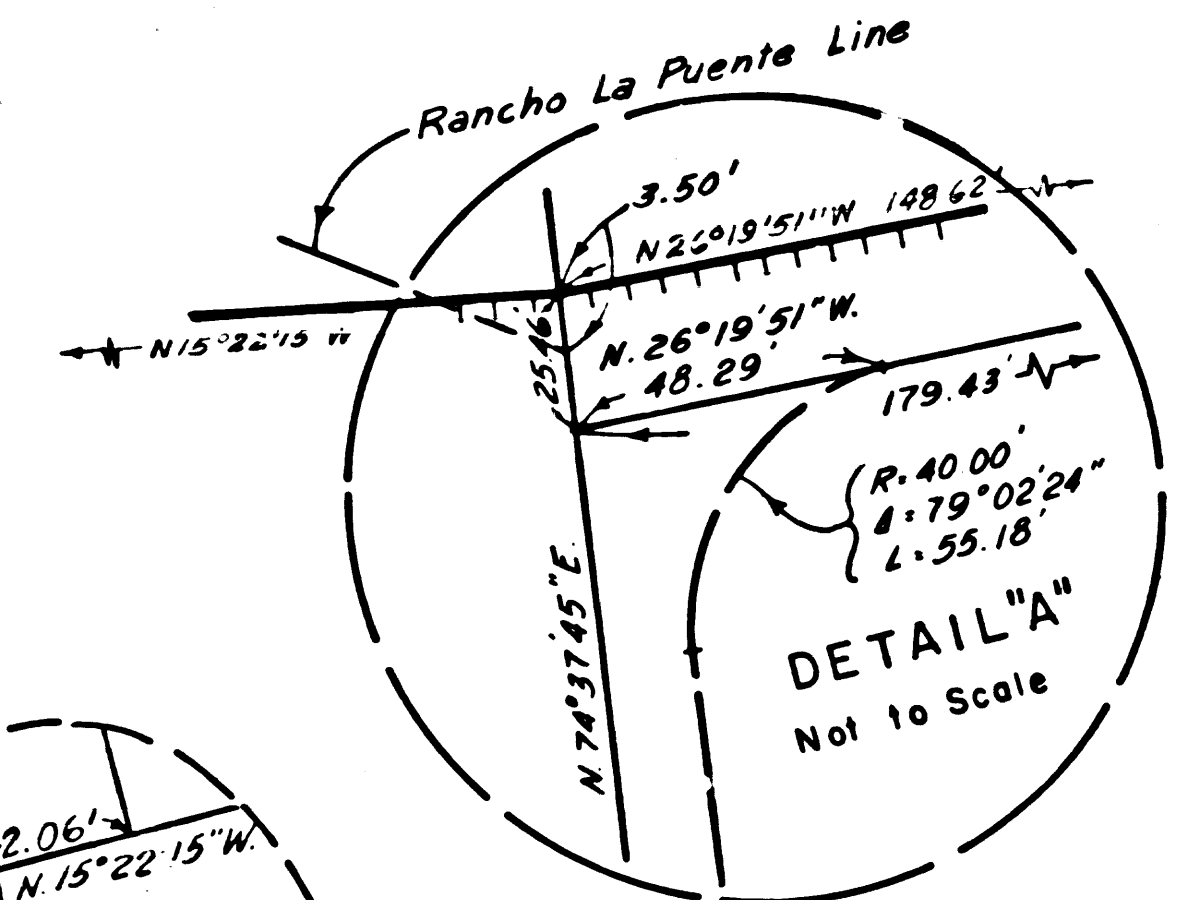
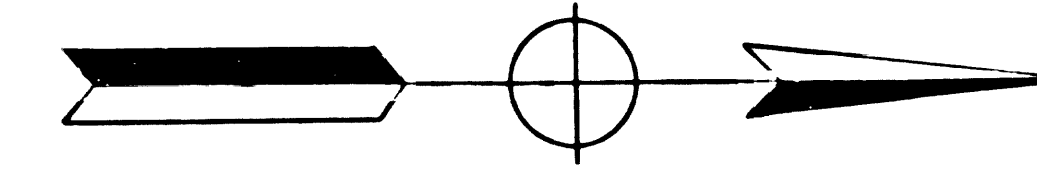
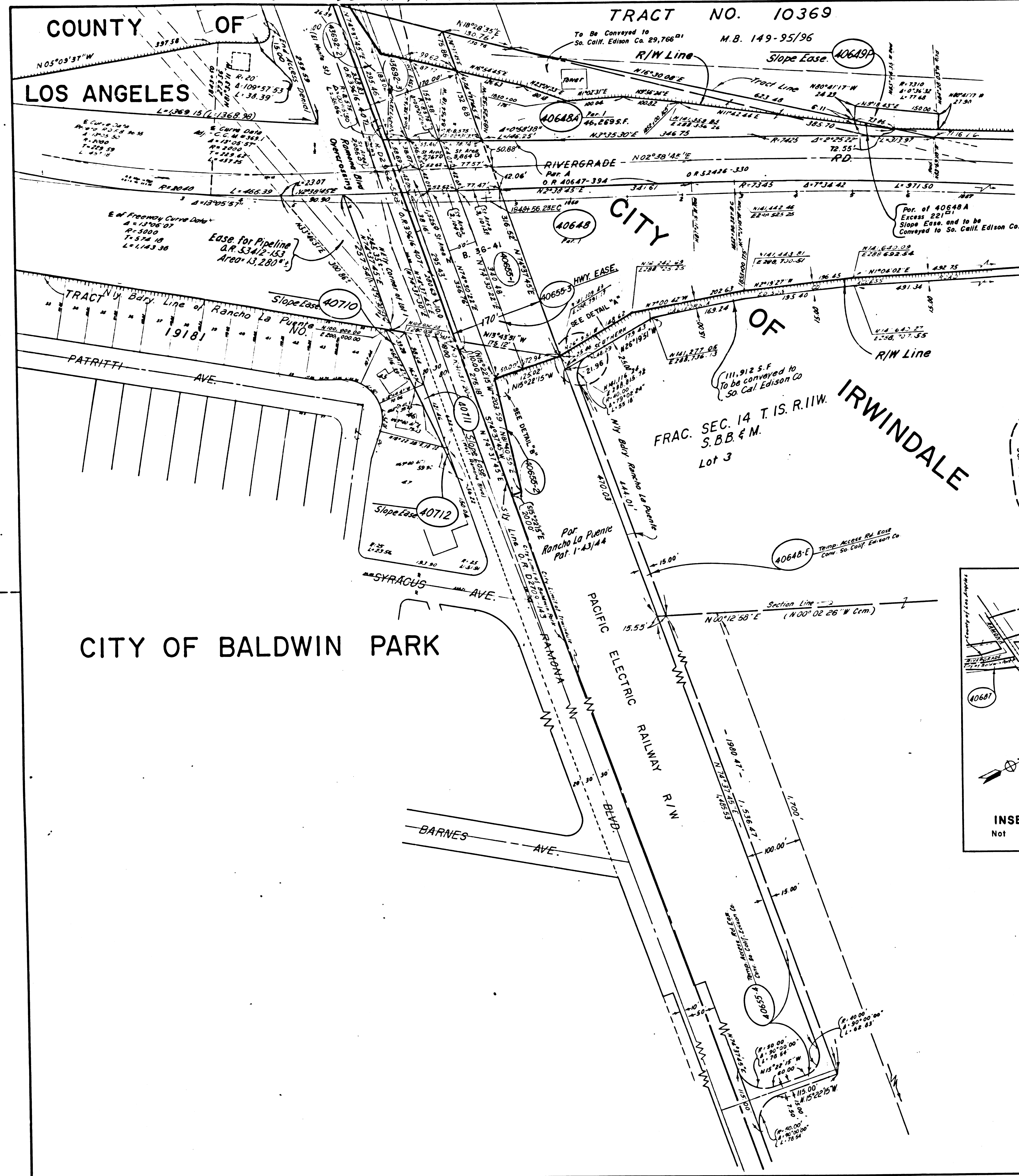
REVISED BY PMS DATE 1-1-66
REVISED BY PMS DATE 2-8-66

BY PMS 1-1-66 BY 1-1-66
BY PMS 2-8-66 BY 2-8-66

FM 21425-3

FM 21425-3

For Continuation See Map Nos F1970-2 & F1970-3



REG. NO.	STATE	FEDERAL PROJECT NO.	EFFECTIVE DATE	SHEET NO.	TOTAL SHEETS
7	CALIF.	I-605-2(19)139	3-7-69	4a	

DISTRICT R/W AGENT BUREAU OF PUBLIC ROADS DATE

PARCEL NO.	GRANTOR OR GRANTEE	AREA*		INST. DATE	RECORDING DATA
		TO BE ACQUIRED	EXCESS TOTAL		
40648	Refer to Map No 1970-2				
40648-A					
40648-E	Con Rock Products Co	7,324		Cond 1-5-70	D4599-150
40649-P	Refer to Map No 1970-2				
40655-1	Refer to Map No F1970-2				
40655-4	So. Pacific Co.	26,740			

INTERSTATE

STATE OF CALIFORNIA

TRANSPORTATION AGENCY DEPARTMENT OF PUBLIC WORKS

DIVISION OF HIGHWAYS
07-LA-605-21.0

R/W MAP

RIVERGRADE RD. & RAMONA BLVD.

SCALE 1"=100'
DRAFT G.R.
RWPE T.S.O.

FILE NO **F1970-4**
DATE 8-12-68
APPROVED R.W.F.

REVISION DATES			
REV. BY	DATE	REV. BY	DATE
G.R.	10-3-68		

LEGEND: ACCESS DENIAL LINE TOP OF CUT TOE OF FILL
* UNLESS OTHERWISE NOTED ALL AREAS ARE IN SQUARE FEET
IF MORE THAN ONE BEARING AND DISTANCE ARE SHOWN FOR A LINE, THE ONE IN PARENTHESES IS PREVIOUS RECORD

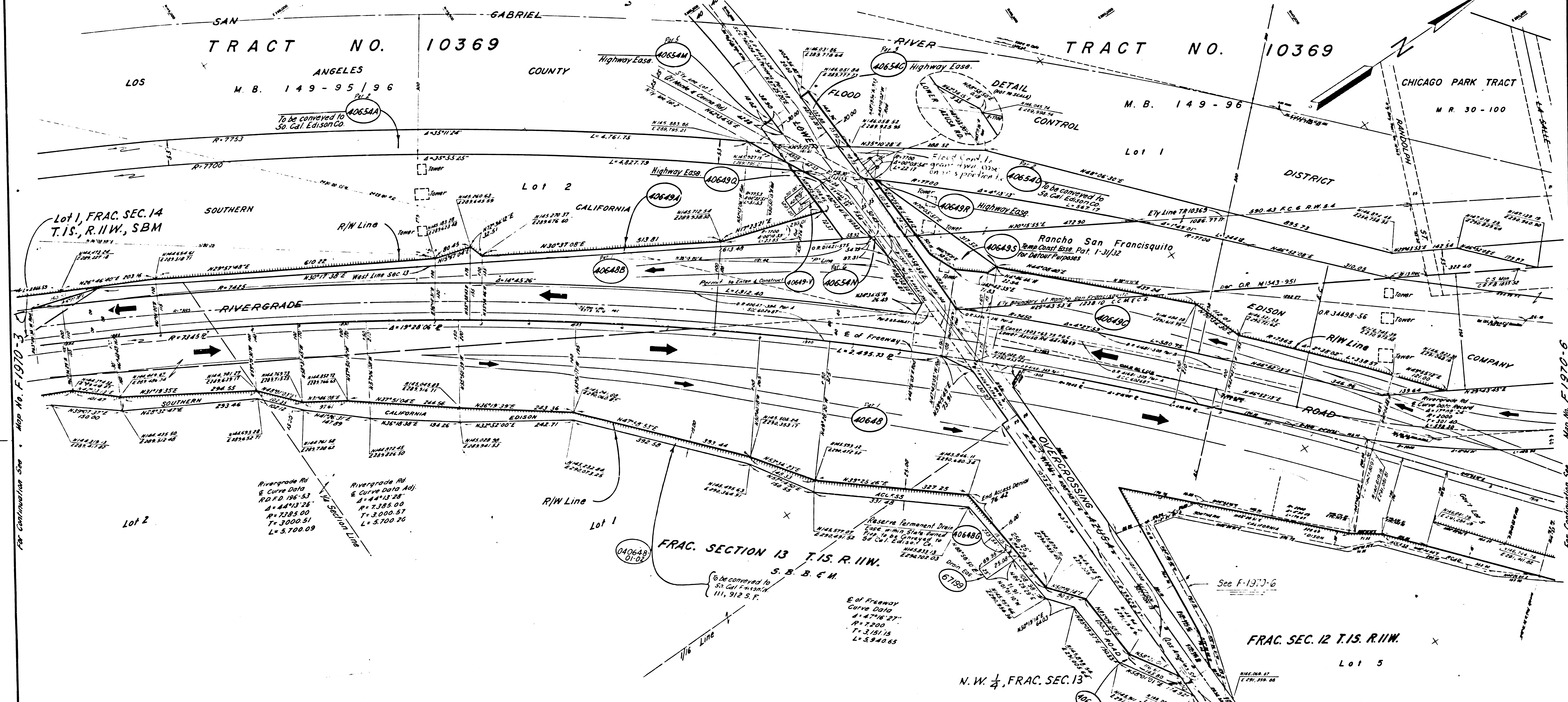
FM 21425-4

FM 21425-4

CITY OF IRWINDALE

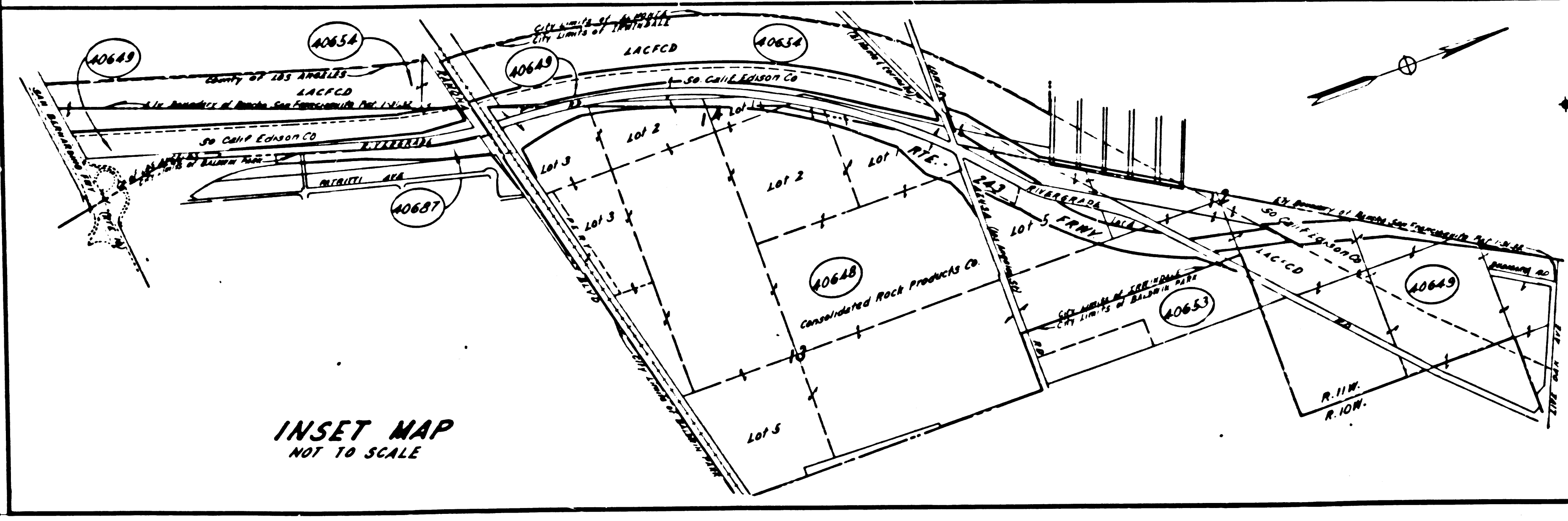
TRACT NO. 10369
 ANGELES COUNTY
 M. B. 149-95/96

TRACT NO. 10369
 M. B. 149-96



Map No. F-1970-3

Map No. F-1970-6



♦ Excluding Street Area

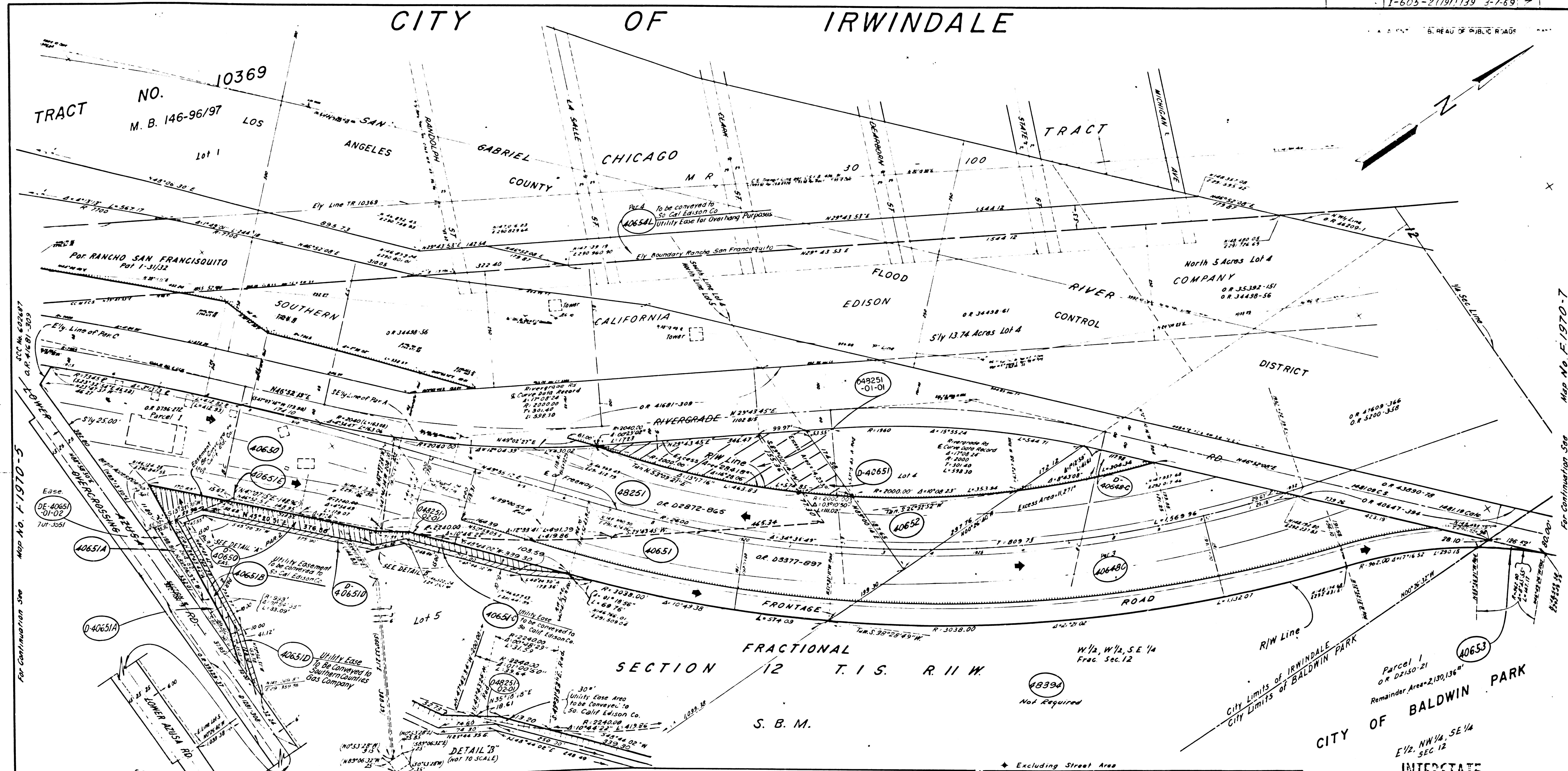
PARCEL NO.	GRANTOR OR GRANTEE	AREA*			RECORDING DATA
		TO BE ACQUIRED	EXCESS	TOTAL	
40648	Refer to Map No. F-1970-2				
40648B	Con Rock Products Co	111,889			1970-150
40648F	Reserve Farm Lease for State	11,539			
40649A	So. Cal Edison Co.	83,310			
40649C	So. Cal Edison Co.	83,494			
40654A	LACFCO	280,304			
40648G	Reserve Drain Easement	376			
40654C	LACFCO	2,813			
40654D	LACFCO	95,016			
40654M	LACFCO	350			
40654N	LACFCO	163			
40649Q	So. Cal Edison Co.	7,068			
40649R	So. Cal Edison Co.	2,740			
40649S	So. Cal Edison Co.	11,460			
40649V	So. Cal Edison Co.	Right to Enter & Construct			
67199	Consolidated Rock	1,773			

INTERSTATE
 STATE OF CALIFORNIA
 HIGHWAY TRANSPORTATION AGENCY
 DEPARTMENT OF PUBLIC WORKS
 Division of Highways
 7 - LA - 605 - 221
R/W MAP
 STA. 1884 to STA. 1916
 SCALE 1" = 100' FILE NO. F1970-5
 DRAFT PMS DATE 6-23-65 APPR. RWN
 REVISED BY PMS DATE 7-2-66
 REVISED BY PMS DATE 7-8-66
 FIG. 12-7-66 PMS
 FIG. 12-7-66 PMS
 FIG. 12-7-66 PMS

FM 21425-5 16151-C

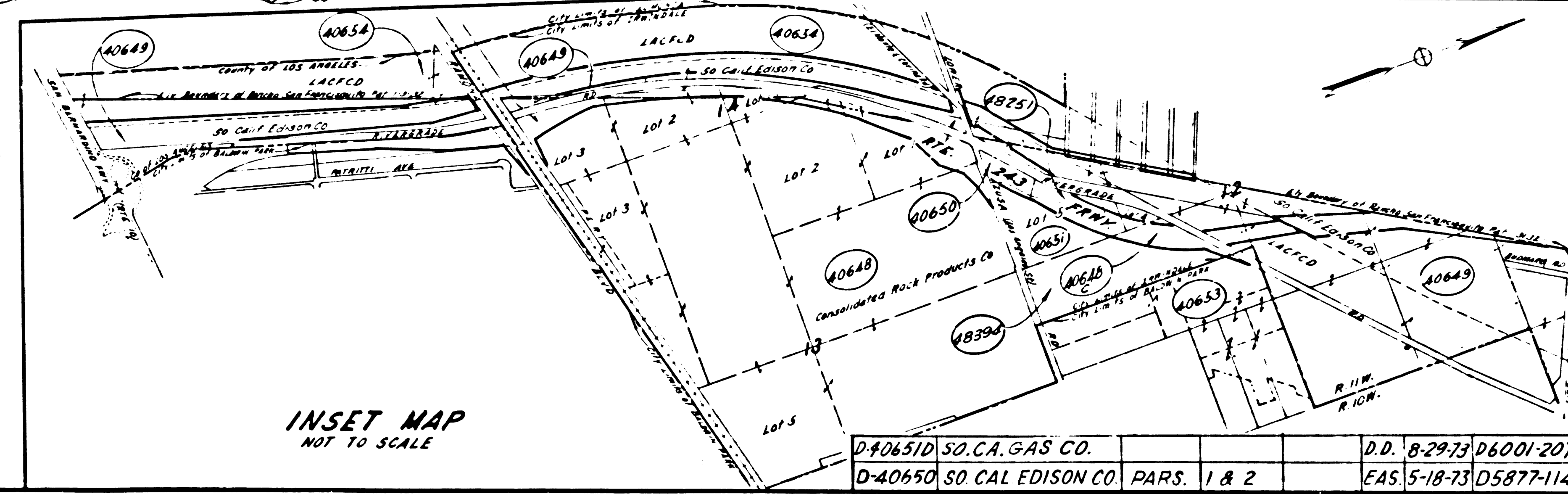
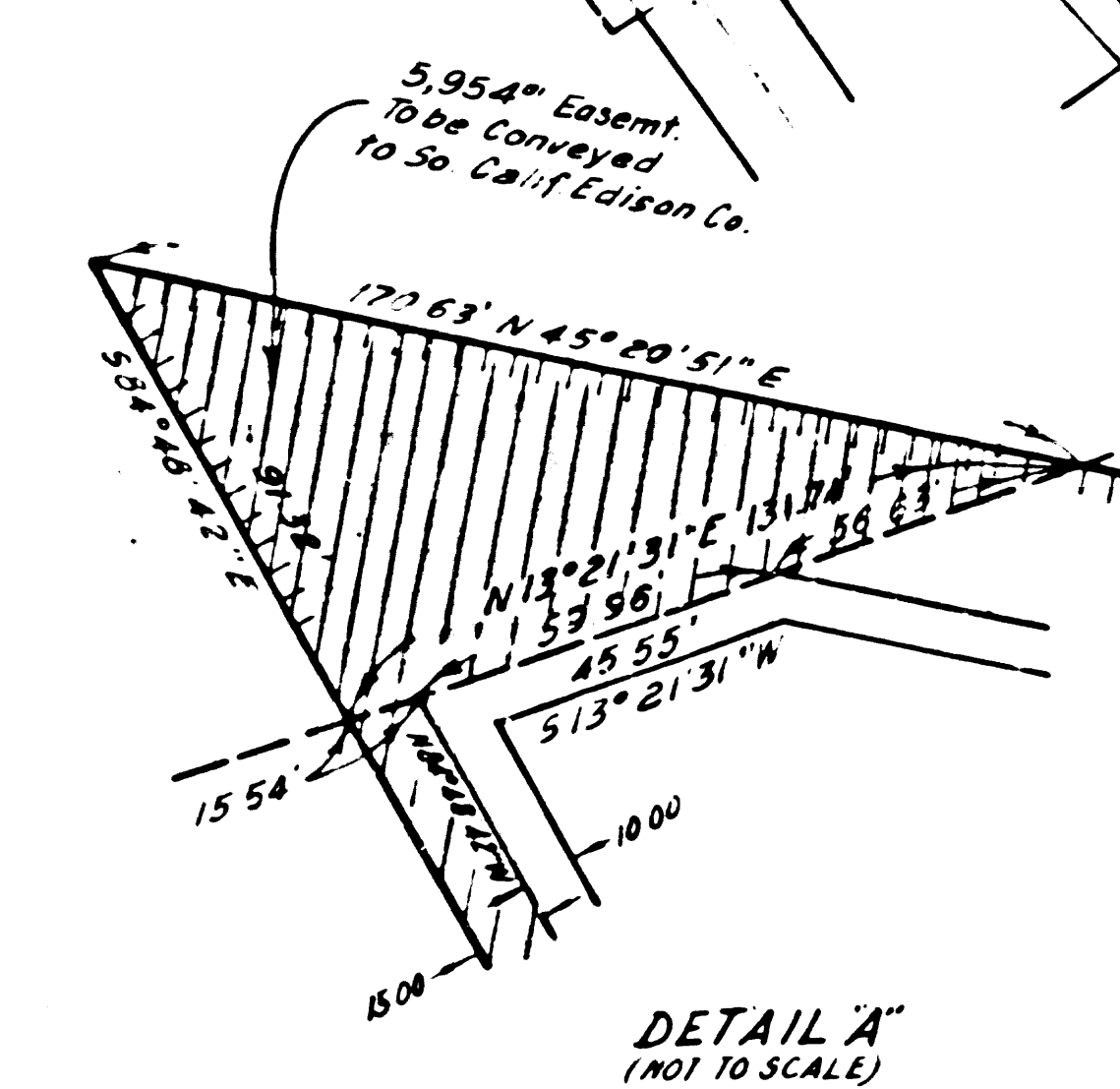
FM 21425-5

CITY OF IRWINDALE



FOR CONTINUATION SEE MAP NO. F-1970-5

FOR CONTINUATION SEE MAP NO. F-1970-7



Excluding Street Area

PARCEL NO.	GRANTOR OR GRANTEE	75% BE	EXCESS	TOTAL	INST	RECORDING DATA
						DATE O.R.
40648C	Can Rock Products Co	273,620	11,271	273,620	Cont	1-5-70 D4599-150
40650	G.W. Helmick	157,319	5,954	157,319	Fee	2-27-69 D4290-960
40651	H.J. Yount, et al.	138,407	4,233	740,566	Fee	7-23-70 D4780-886
40651A	"	"	"	11,656	6,959	7-23-70 D4780-886
40651B	"	"	"	5,554	"	7-23-70 D4780-886
40651C	"	"	"	16,635	"	7-23-70 D4780-886
40652	American Cement Corp.	26,092	"	83,354	Fee	8-1-69 D4453-740
40653	J.P.F.M. Control, et al.	1,031	"	2,131,167	Fee	3-10-69 D4301-474
40648C	St. to E.D. Rodeffer	"	"	"	DD	8-4-72 D5557-142
40634L	LACFCO	81,839	"	"	Easement	"
D-40651A	A.S. Rados, et al.	"	"	"	DD	1-2-73 D5716-920
40651D	H.J. Yount, et al.	12,935	23,112	740,566	Easement	7-23-70 D4780-886
48251	H.J. Yount, et al.	175,015	28,410	175,015	Fee	7-23-70 D4780-886
DE-40651	So. California Edison	"	"	"	DD	4-25-73 D5845-37
40651E	H.J. Yount, et al.	1,848	"	740,566	Fee	7-23-70 D4780-886
D-40651	Rodeffer	"	"	"	DD	6-27-70 D5510-149

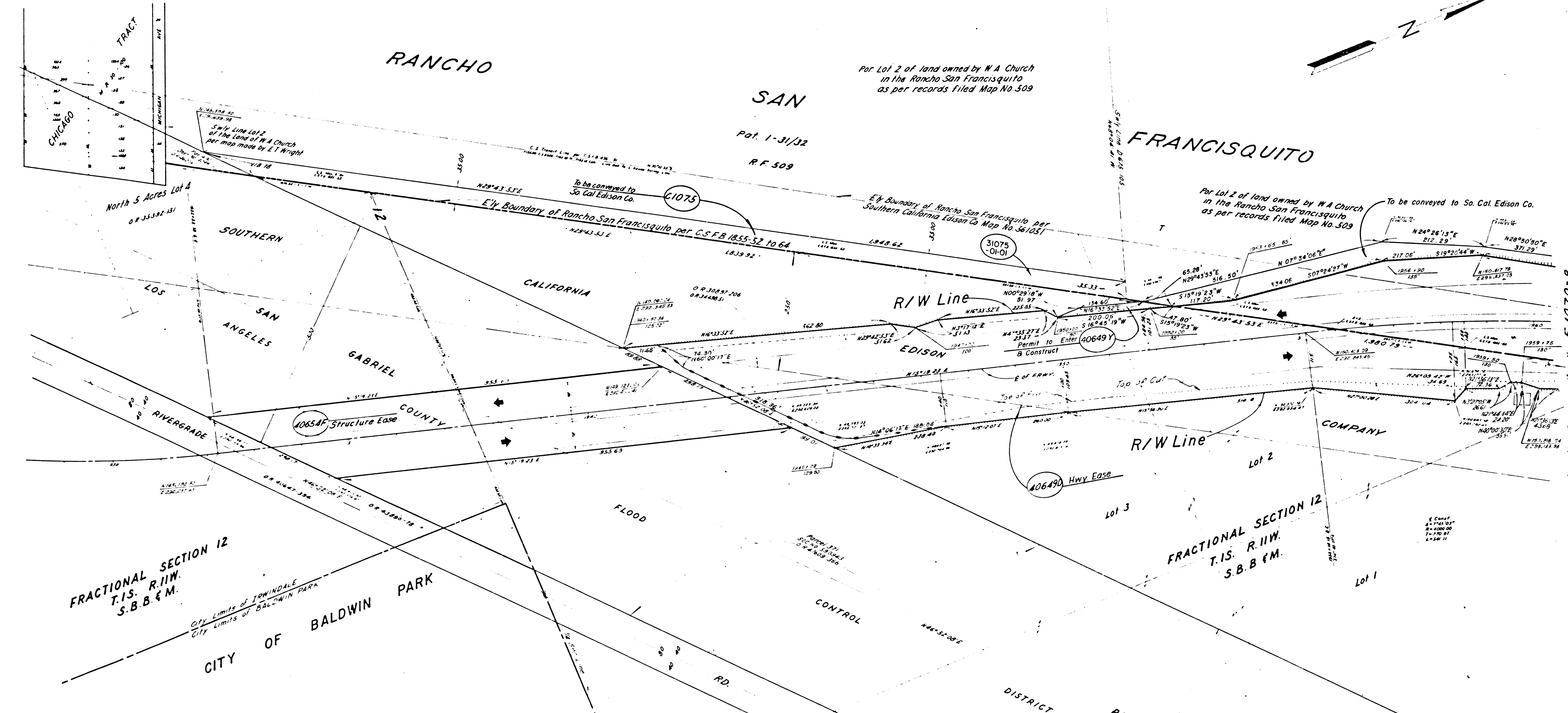
INTERSTATE
STATE OF CALIFORNIA
HIGHWAY TRANSPORTATION AGENCY
DEPARTMENT OF PUBLIC WORKS
Division of Highways

07-LA-605-22.5
R/W MAP
LOWER AZUSA RD. TO
CITY LIMITS OF BALDWIN PARK
SCALE 1"=100' FILE NO. F1970-6

DRAFT - PMS DATE 6-2-65 APPR. (RWJ)
REVISIONS BY PMS DATE 6-23-66
REVISIONS BY PMS DATE 12-6-66

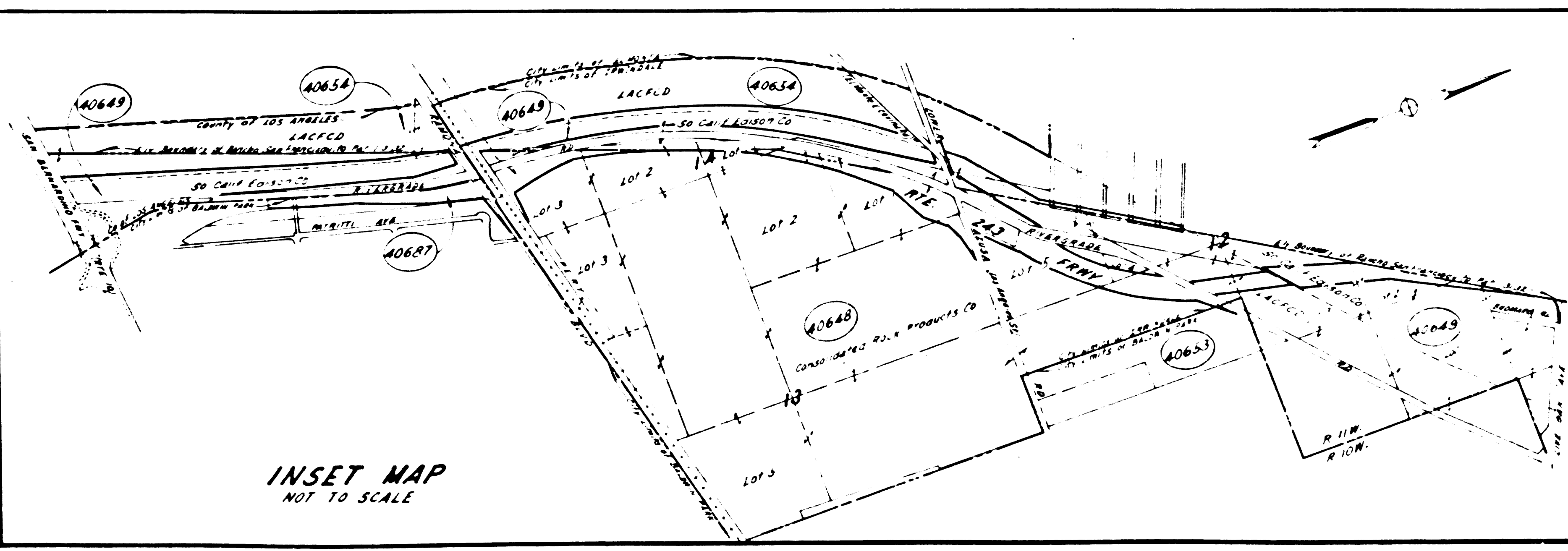
F.M. 21425-6

CITY OF IRWINDALE



For Continuation See Map No. F1970-6

For Continuation See Map No. F1970-8



PARCEL NO.	GRANTOR OR GRANTEE	AREA*		INST.	RECORDING DATA	
		TO BE ACQUIRED	EXCESS TOTAL		DATE	O. R.
31075	John D. Bicknell, Baggett	66.30	228.71	Ac/Sec	8-13-63	D.3014 667
40649D	So. Calif. Edison Co.	336.205		EASE		
40654F	LACFCO	149.086		EASE		
40649Y	So. Cal. Edison Co.	3,000		Ext. & Const.		

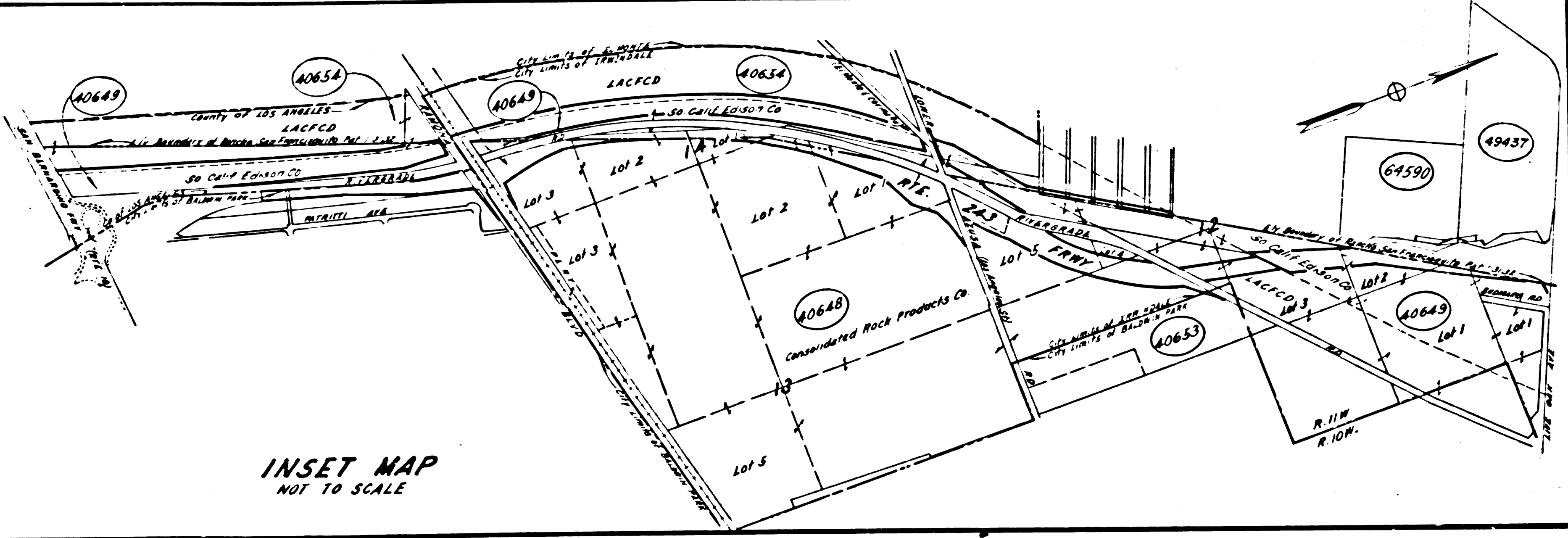
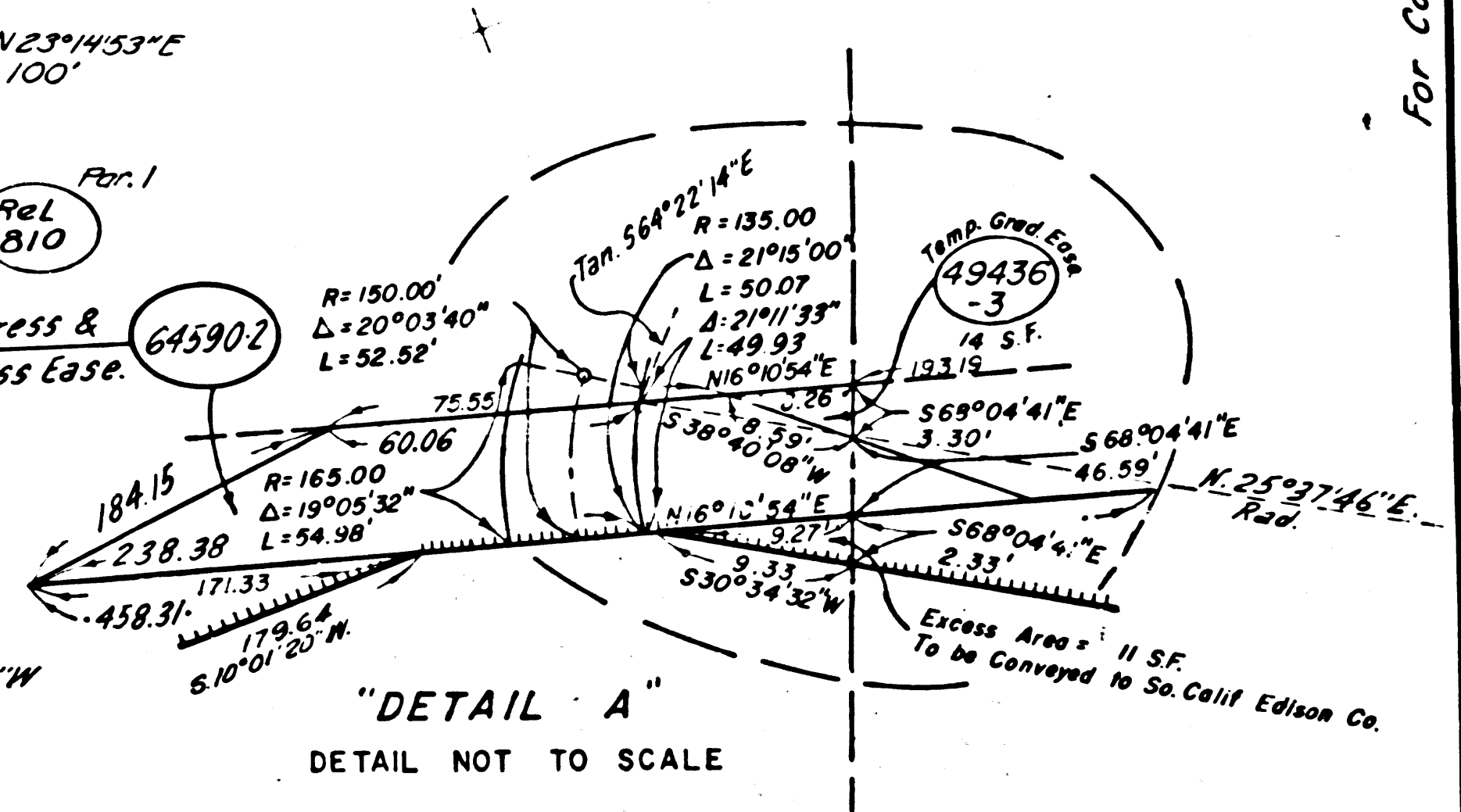
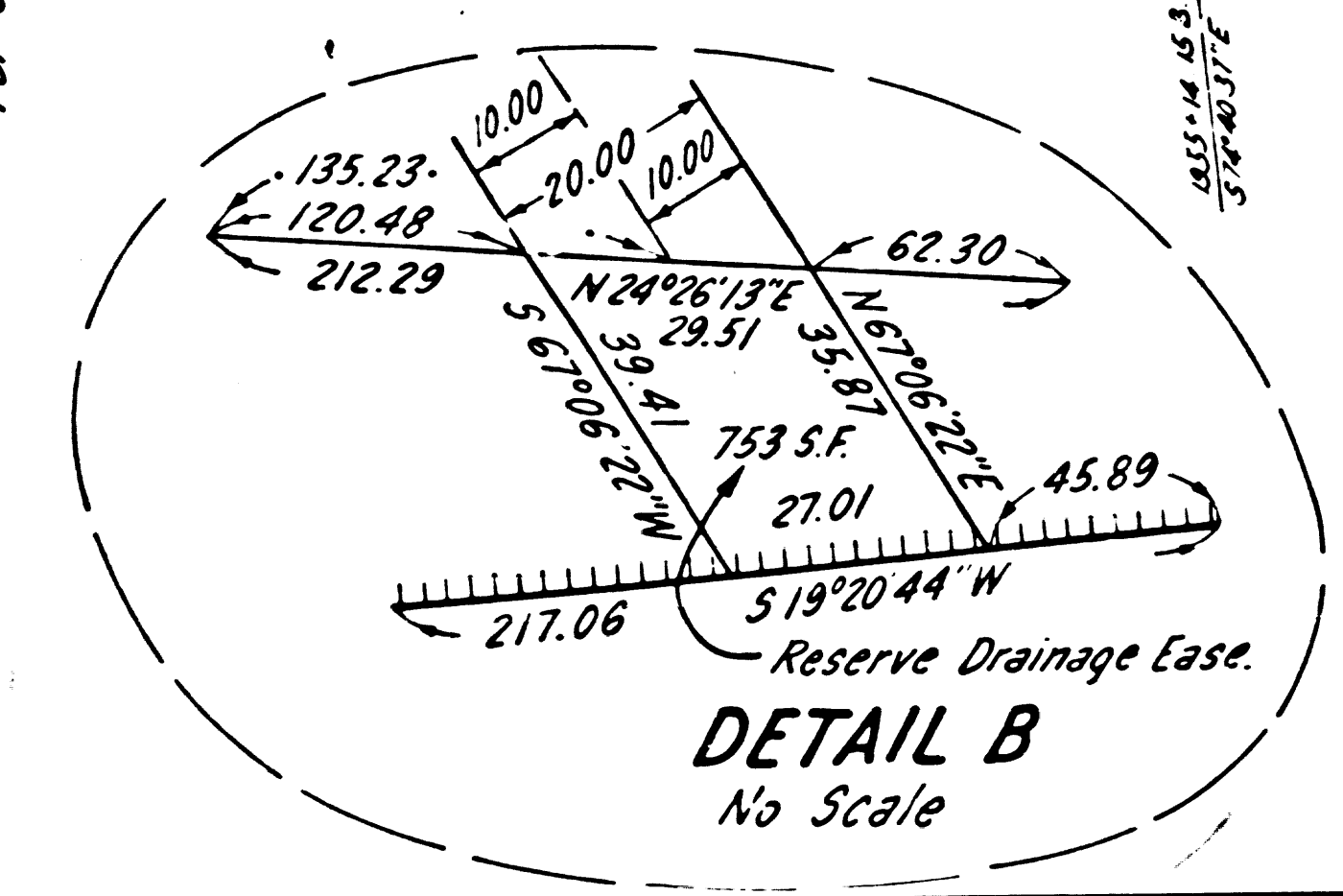
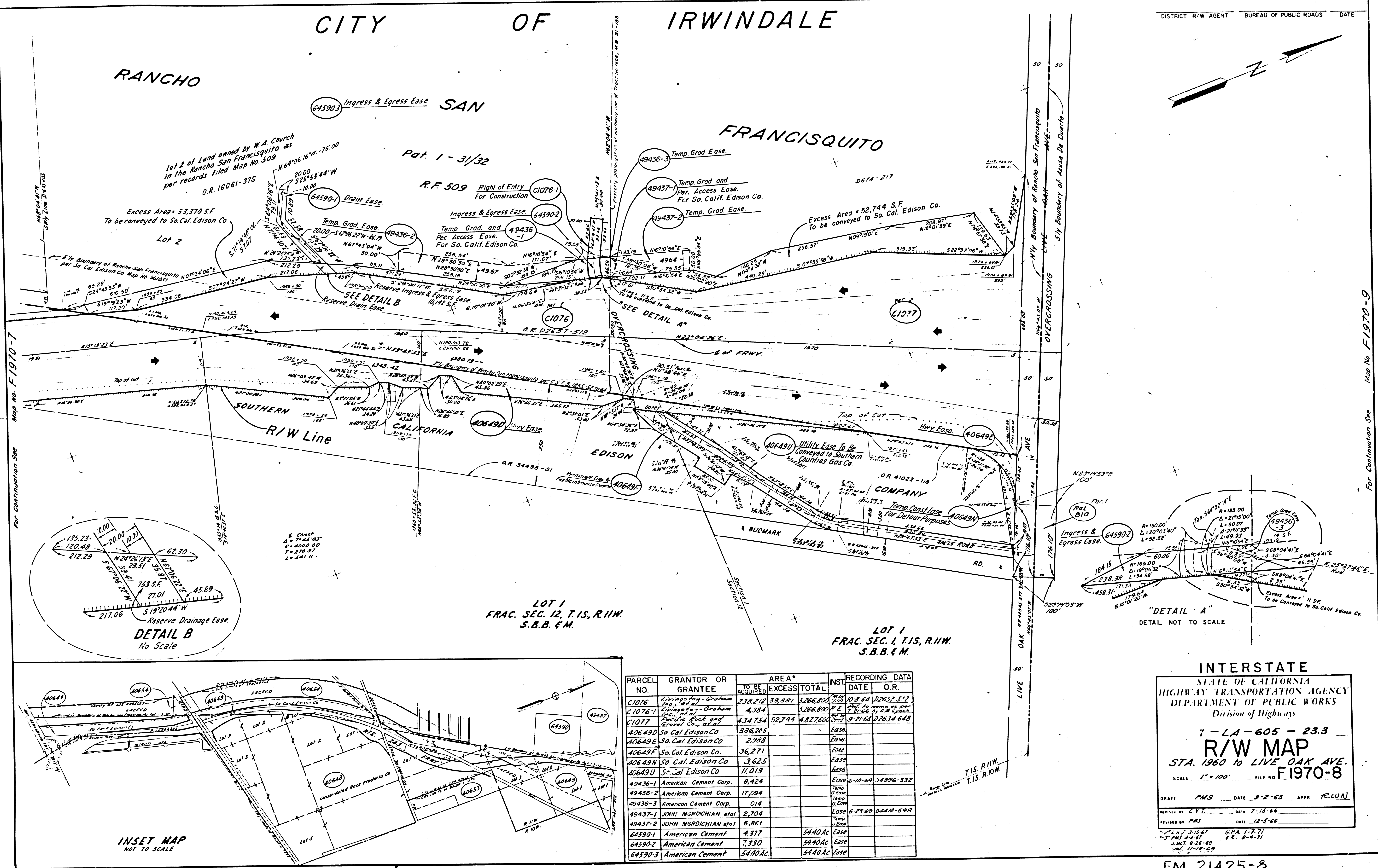
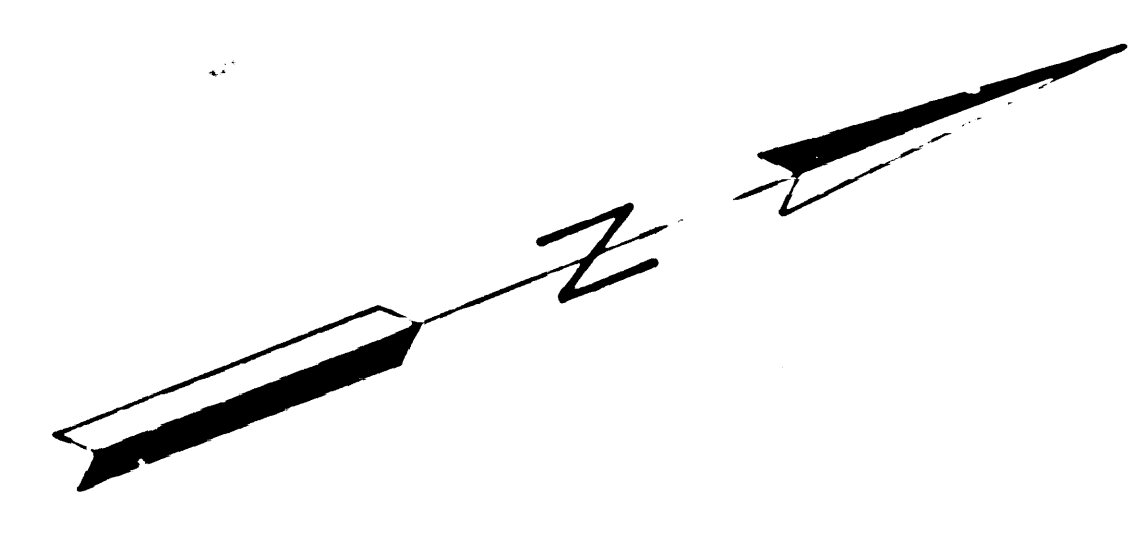
FM 21425-7

FM 21425-7

CITY OF IRWINDALE

RANCHO

FRANCISQUITO



PARCEL NO.	GRANTOR OR GRANTEE	TO BE ACQUIRED	EXCESS	AREA* TOTAL	INST.	RECORDING DATA DATE	O.R.
C1076	Livingston-Graham	238,212	33,981	5,266,800	10-2-64	D2652-512	
C1076-1	Livingston-Graham	4,384		5,266,800	R.E.	10-2-64 D2652-512	
C1077	Livingston-Graham et al	4,347,54	52,744	4,827,600	9-21-64	D2634-648	
40649D	So. Cal. Edison Co.	336,245			Ease		
40649E	So. Cal. Edison Co.	2,988			Ease		
40649F	So. Cal. Edison Co.	36,271			Ease		
40649N	So. Cal. Edison Co.	3,625			Ease		
40649U	So. Cal. Edison Co.	11,019			Ease		
49436-1	American Cement Corp.	8,424			Ease	6-10-69 D396-332	
49436-2	American Cement Corp.	17,094			Temp. Grad. and Per. Access		
49436-3	American Cement Corp.	014			Temp. Grad. and Per. Access		
49437-1	JOHN MGRDICHIAN et al	2,704			Ease	6-23-69 D410-598	
49437-2	JOHN MGRDICHIAN et al	6,861			Temp. Grad. and Per. Access		
64590-1	American Cement	4,377		5440 Ac	Ease		
64590-2	American Cement	7,330		5440 Ac	Ease		
64590-3	American Cement	5440 Ac		5440 Ac	Ease		

INTERSTATE
 STATE OF CALIFORNIA
 HIGHWAY TRANSPORTATION AGENCY
 DEPARTMENT OF PUBLIC WORKS
 Division of Highways

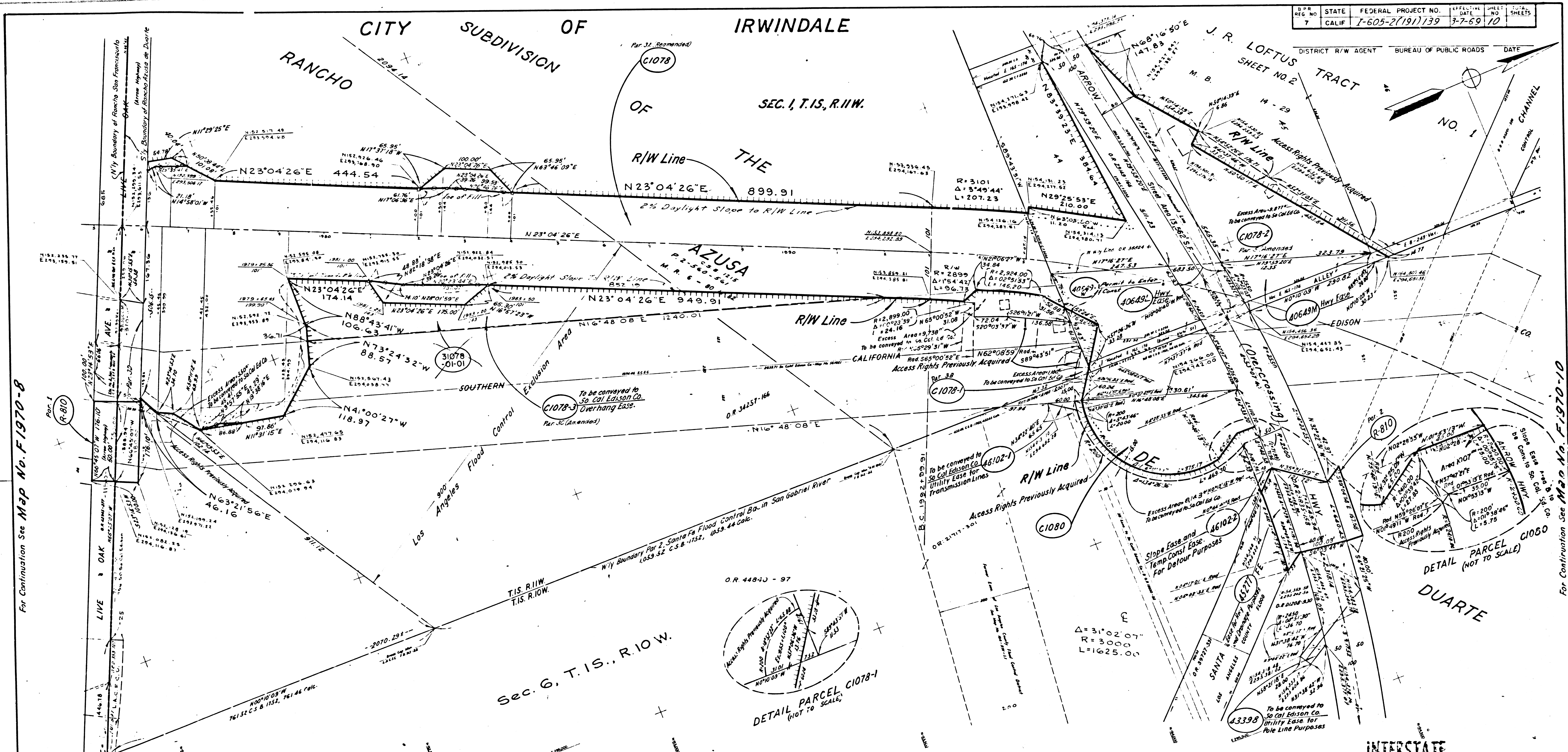
7-LA-605-233
R/W MAP
 STA. 1960 TO LIVE OAK AVE.
 SCALE 1" = 100' FILE NO. F1970-8

DRAFT PMS DATE 9-2-65 APPR. (RWJ)
 REVISIONS BY C.Y. DATE 7-13-66
 REVISIONS BY PMS DATE 12-3-66

FM 21425-8

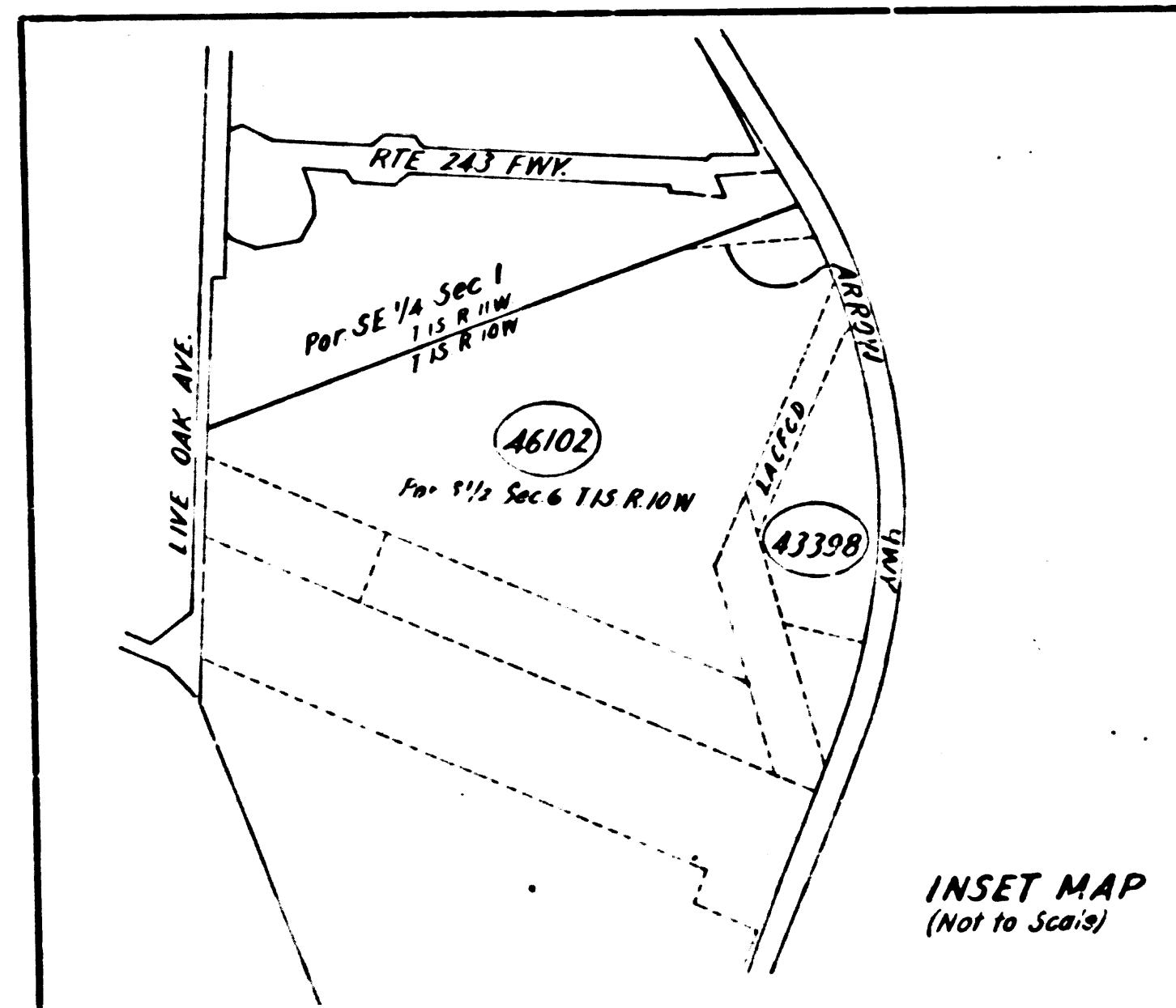
FM 21425-8

Map No. F1970-8
 For Continuation See



For Continuation See Map No. F1970-8

For Continuation See Map No. F1970-10



Excluding Street Area

PARCEL NO.	GRANTOR OR GRANTEE	NO. ACQUIRED	EXCESS	TOTAL	INS.	RECORDING DATA
						DATE O.R.
C1078	The Flintkote Co. et al	578.98	10.288		Case	11-15-63 D3115-384
C1078-1	The Flintkote Co. et al	1.142			Case	11-15-63 D3115-384
C1078-2	The Flintkote Co. et al	78.674			Case	11-15-63 D3115-384
C1078-3	The Flintkote Co. et al	77.703			Case	11-15-63 D3115-384
C1080	Owl Constructors et al	54.551	6.148		Case	11-12-63 D3112-647
A6102-1	Owl Constructors et al	5.92		2783.493	Case	11-12-63 D4221-372
A6102-2	Owl Constructors et al	3.643		2213.193	Case	11-12-63 D4221-372
A0649L	So Calif Edison Co.	72.213		83.622	Case	
A0649M	So Calif Edison Co.	20.058		20.058	Case	
A3398	Tony M. Ortiz et al	1.816		330.762	Case	9-11-72 D5564-660
A5277	LACFCO	7.454			Case	9-23-68 D4109-881
A5449-W	So Calif Edison Co. Permit to Enter & Construct				Rel.	6-24-71 R3675-392
181, 810, 182	City of Irwindale					

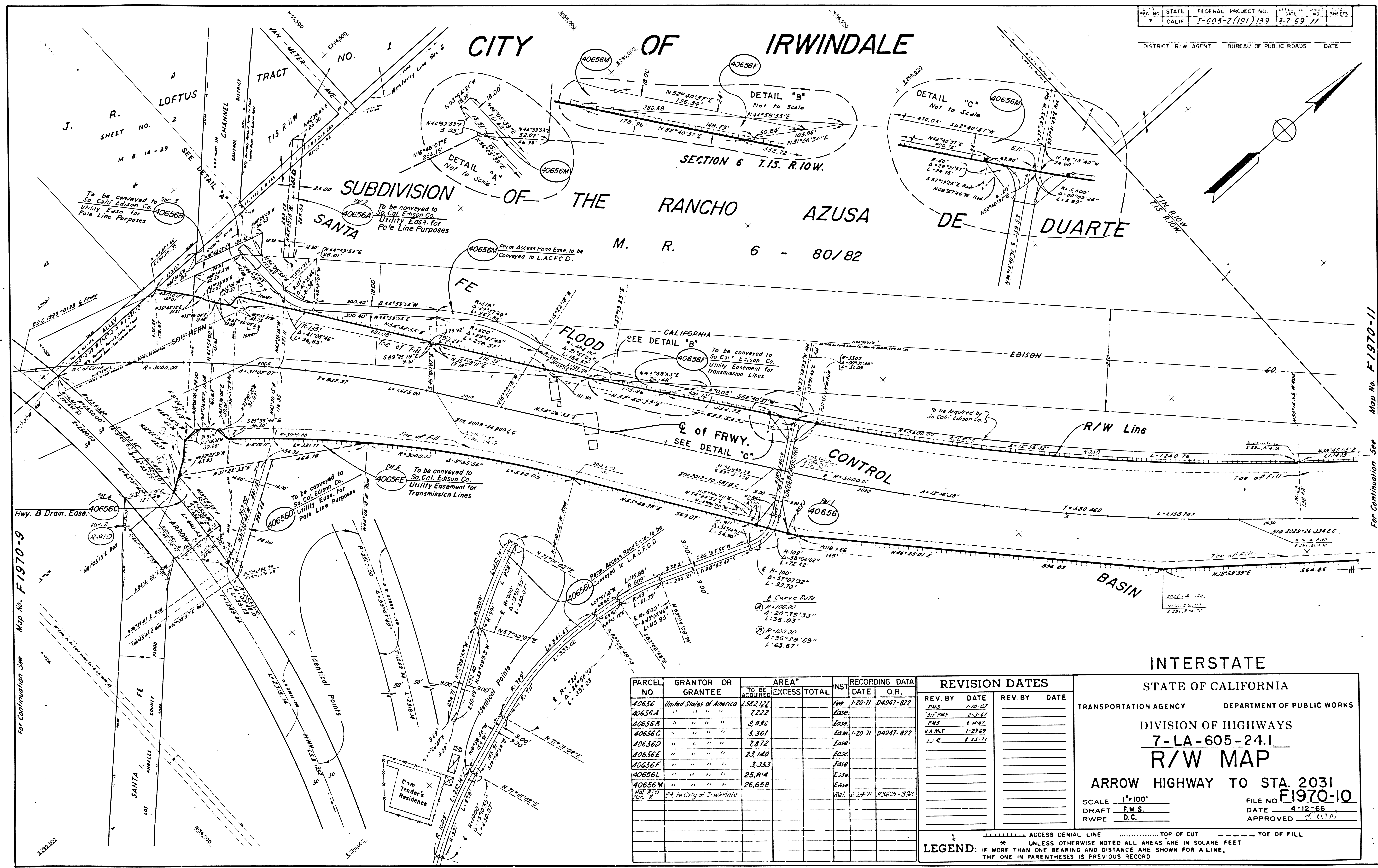
REVISION DATES	
REV. BY	DATE
PWS	11-30-66
P.S.	7-3-67
R.S.	7-10-69
JMCT	7-19-69
P.S.	8-12-69
P.S.	3-1-71

STATE OF CALIFORNIA
 TRANSPORTATION AGENCY DEPARTMENT OF PUBLIC WORKS
 DIVISION OF HIGHWAYS
 7-LA-605-23.8
R/W MAP
 LIVE OAK AVE. TO ARROW HWY.
F1970-9
 SCALE 1" = 100'
 DRAFT C.T.
 RWPE T. Ortiz
 FILE NO. F1970-9
 DATE 7-11-66
 APPROVED R.W.F.

----- ACCESS DENIAL LINE ----- TOP OF CUT ----- TOE OF FILL
 * UNLESS OTHERWISE NOTED ALL AREAS ARE IN SQUARE FEET
 LEGEND: IF MORE THAN ONE BEARING AND DISTANCE ARE SHOWN FOR A LINE, THE ONE IN PARENTHESES IS PREVIOUS RECORD

F.M. 21425-9

FM 21425-9



Map No. F1970-11 For Continuation See

Map No. F1970-9 For Continuation See

PARCEL NO	GRANTOR OR GRANTEE	TO BE ACQUIRED	AREA* EXCESS TOTAL	RECORDING DATA	
				INST DATE	O.R.
40656	United States of America	1,582,122		Eas	1-20-71 04941-822
40656A	" " " "	7,222		Eas	
40656B	" " " "	5,990		Eas	
40656C	" " " "	5,361		Eas	1-20-71 04941-822
40656D	" " " "	7,872		Eas	
40656E	" " " "	23,140		Eas	
40656F	" " " "	3,333		Eas	
40656L	" " " "	25,814		Eas	
40656M	" " " "	26,658		Eas	
Total 54 to City of Irwindale					Rel. 1-24-71 03615-392

REVISION DATES			
REV. BY	DATE	REV. BY	DATE
PMS	1-10-61		
BIL PMS	2-3-61		
PMS	6-14-61		
W.A.M.T.	1-27-63		
L.R.	8-15-71		

INTERSTATE
STATE OF CALIFORNIA
TRANSPORTATION AGENCY DEPARTMENT OF PUBLIC WORKS
DIVISION OF HIGHWAYS
7-LA-605-24.1
R/W MAP
ARROW HIGHWAY TO STA. 2031
FILE NO. **F1970-10**
SCALE 1"=100'
DRAFT F.M.S.
RWPE D.C.
DATE 4-12-66
APPROVED T.W.N.

LEGEND: ACCESS DENIAL LINE TOP OF CUT UNLESS OTHERWISE NOTED ALL AREAS ARE IN SQUARE FEET IF MORE THAN ONE BEARING AND DISTANCE ARE SHOWN FOR A LINE, THE ONE IN PARENTHESES IS PREVIOUS RECORD TOE OF FILL

F.M. 21425-10

FM 21425-10

CITY OF IRWINDALE

STATE FEDERAL PROJECT NO. DATE SHEETS
 7 CALIF. 7-605-2(191)139 3-7-69 12

DISTRICT R/W AGENT BUREAU OF PUBLIC ROADS DATE

SECTION 31 T.1N. R.10W.

SUBDIVISION OF RANCHO AZUSA DE DUARTE

SANTA FE

FE

SOUTHERN

CALIFORNIA FLOOD

R/W Line

ACCESS ROAD

EDISON COMPANY

COMPANY

ℰ of FRWY.

CONTROL

R/W Line

BASIN

SECTION 6 T.1S. R.10W.

SECTION 31 T.1N. R.10W.

UNITED STATES OF AMERICA

M. R.

6 - 80 / 82

INTERSTATE

STATE OF CALIFORNIA

TRANSPORTATION AGENCY DEPARTMENT OF PUBLIC WORKS

DIVISION OF HIGHWAYS

7-LA-605-24.9

R/W MAP

STA. 2031 TO STA. 300 RAMP A-4 AND STA. 356 RAMP A-1

FILE NO. F1970-II

SCALE 1"=100'

DRAFT P.M.S.

RWPE D.C.

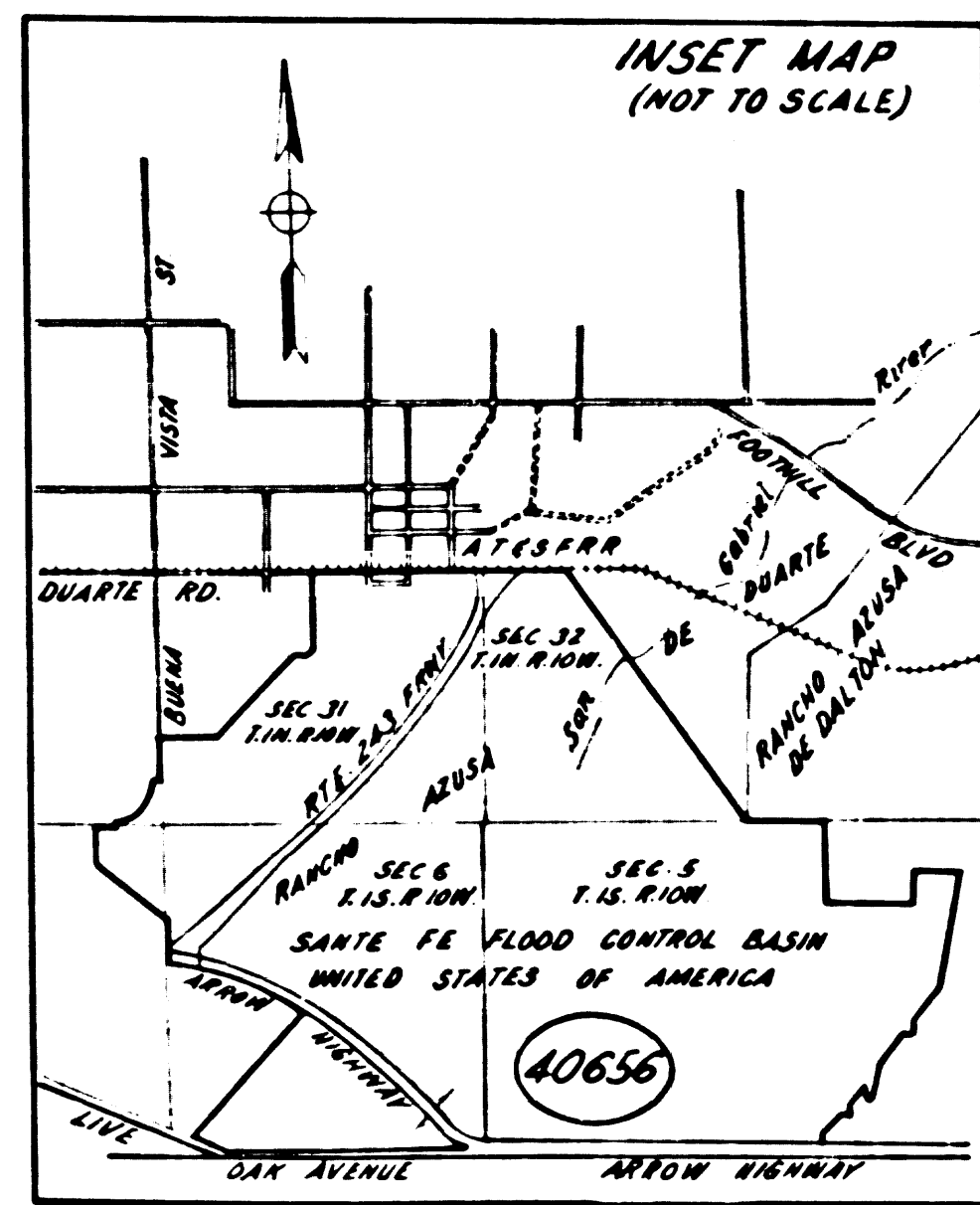
DATE 4-18-66

APPROVED (Signature)

PARCEL NO	GRANTOR OR GRANTEE	AREA* TO BE ACQUIRED	EXCESS	TOTAL	RECORDING DATA	
					INST.	DATE OR
40656	United States of America	1,582.22			Feb	1-29-71 04547-822

REVISION DATES	
REV. BY	DATE
P.M.S.	7-15-66
P.M.S.	1-10-67
P.M.S.	6-14-67
J.M.T.	1-28-69

LEGEND:
 ACCESS DENIAL LINE TOP OF CUT
 * UNLESS OTHERWISE NOTED ALL AREAS ARE IN SQUARE FEET
 IF MORE THAN ONE BEARING AND DISTANCE ARE SHOWN FOR A LINE, THE ONE IN PARENTHESES IS PREVIOUS RECORD



For Continuation See Map No. F1970-10

MATCH LINE TO MAP NO. F1970-12

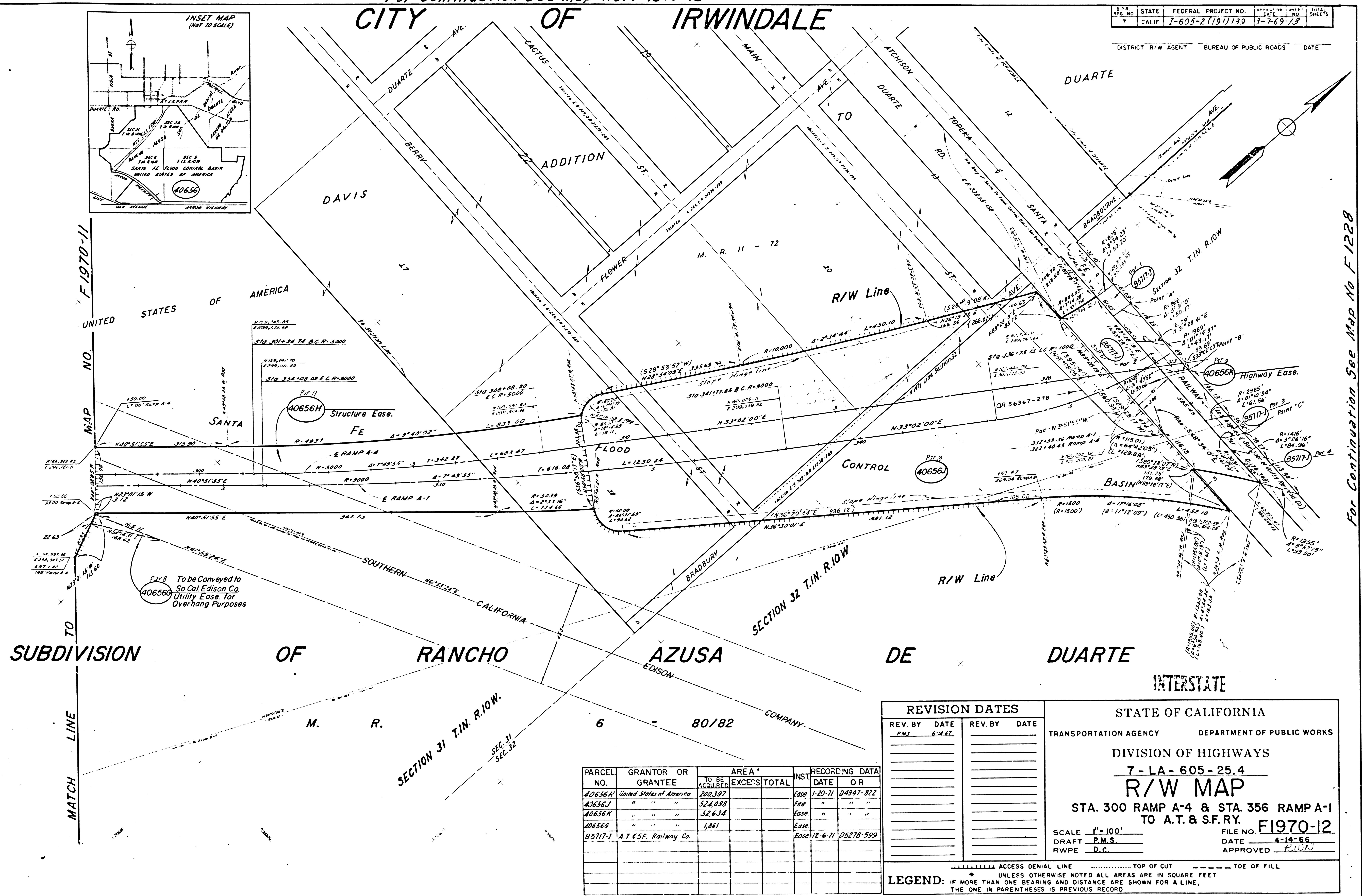
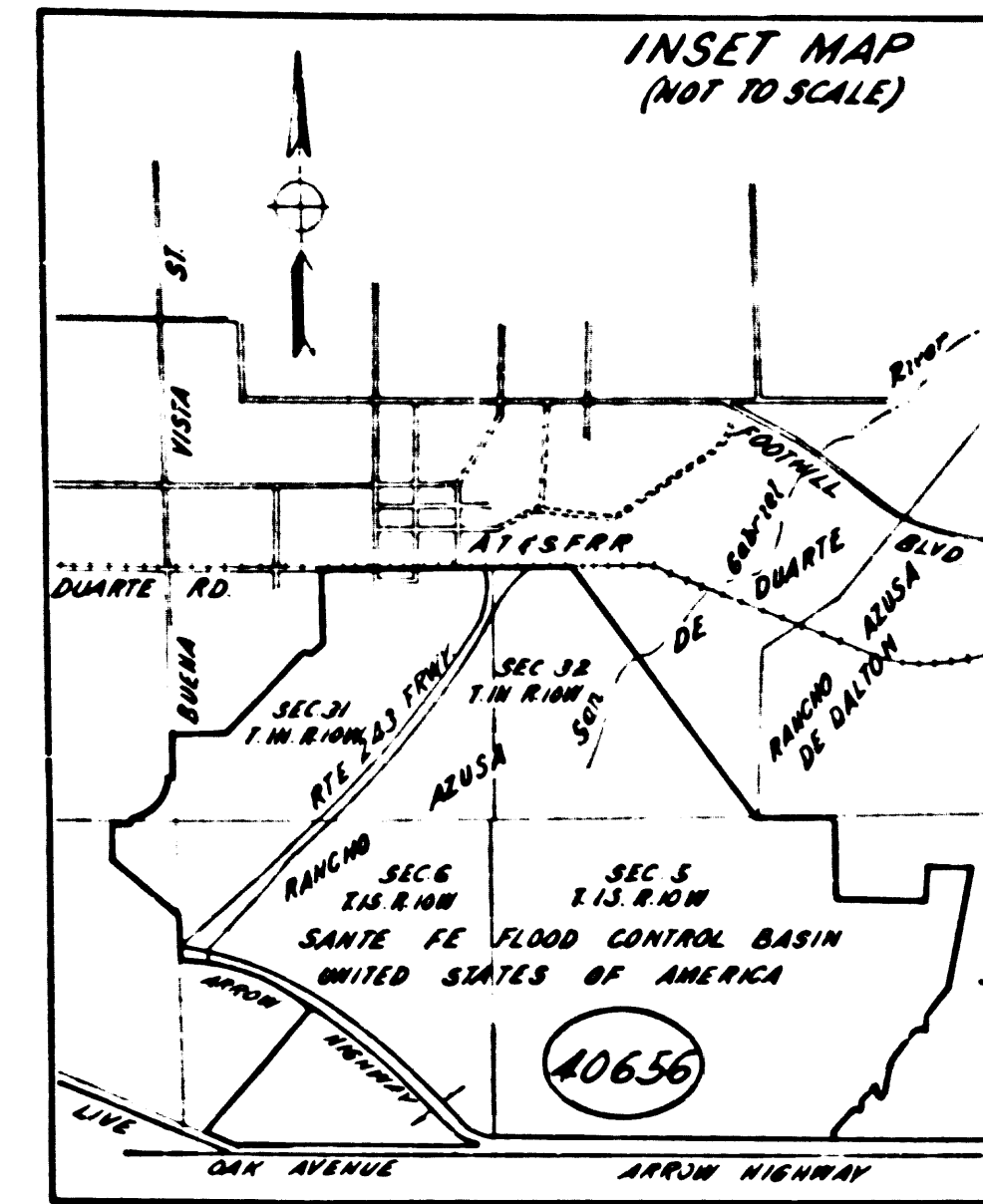
FM 21425-11

F.M. 21425-11

For Continuation See Map No. F1970-13

B.P.R. NO.	STATE	FEDERAL PROJECT NO.	SHEET NO.	TOTAL SHEETS
7	CALIF	7-605-2 (191) 139	3-7-69/13	

DISTRICT R/W AGENT BUREAU OF PUBLIC ROADS DATE



MATCH LINE TO SUBDIVISION OF RANCHO AZUSA DE DUARTE INTERSTATE

For Continuation See Map No F1228

PARCEL NO.	GRANTOR OR GRANTEE	AREA TO BE ACQUIRED	EXCESS TOTAL	INST. DATE	RECORDING DATA
40656H	United States of America	200.397		Ease	1-20-71 04947-822
40656J	"	324.099		Fee	" " "
40656K	"	32.634		Ease	" " "
40656G	"	1.861		Ease	" " "
B5717-J	A.T. & S.F. Railway Co.			Ease	12-6-71 D5278-599

REVISION DATES	
REV. BY	DATE
P.M.S.	6-14-66

STATE OF CALIFORNIA
 TRANSPORTATION AGENCY DEPARTMENT OF PUBLIC WORKS
 DIVISION OF HIGHWAYS
 7-LA-605-25.4
R/W MAP
 STA. 300 RAMP A-4 & STA. 356 RAMP A-1
 TO A.T. & S.F.R.
 FILE NO. F1970-12
 SCALE 1"=100'
 DRAFT P.M.S.
 RWPE D.C.
 DATE 4-14-66
 APPROVED *R.W.*

LEGEND: ----- ACCESS DENIAL LINE ----- TOP OF CUT ----- TOE OF FILL
 * UNLESS OTHERWISE NOTED ALL AREAS ARE IN SQUARE FEET
 IF MORE THAN ONE BEARING AND DISTANCE ARE SHOWN FOR A LINE,
 THE ONE IN PARENTHESES IS PREVIOUS RECORD

F.M. 21425-12

FM 21425-12