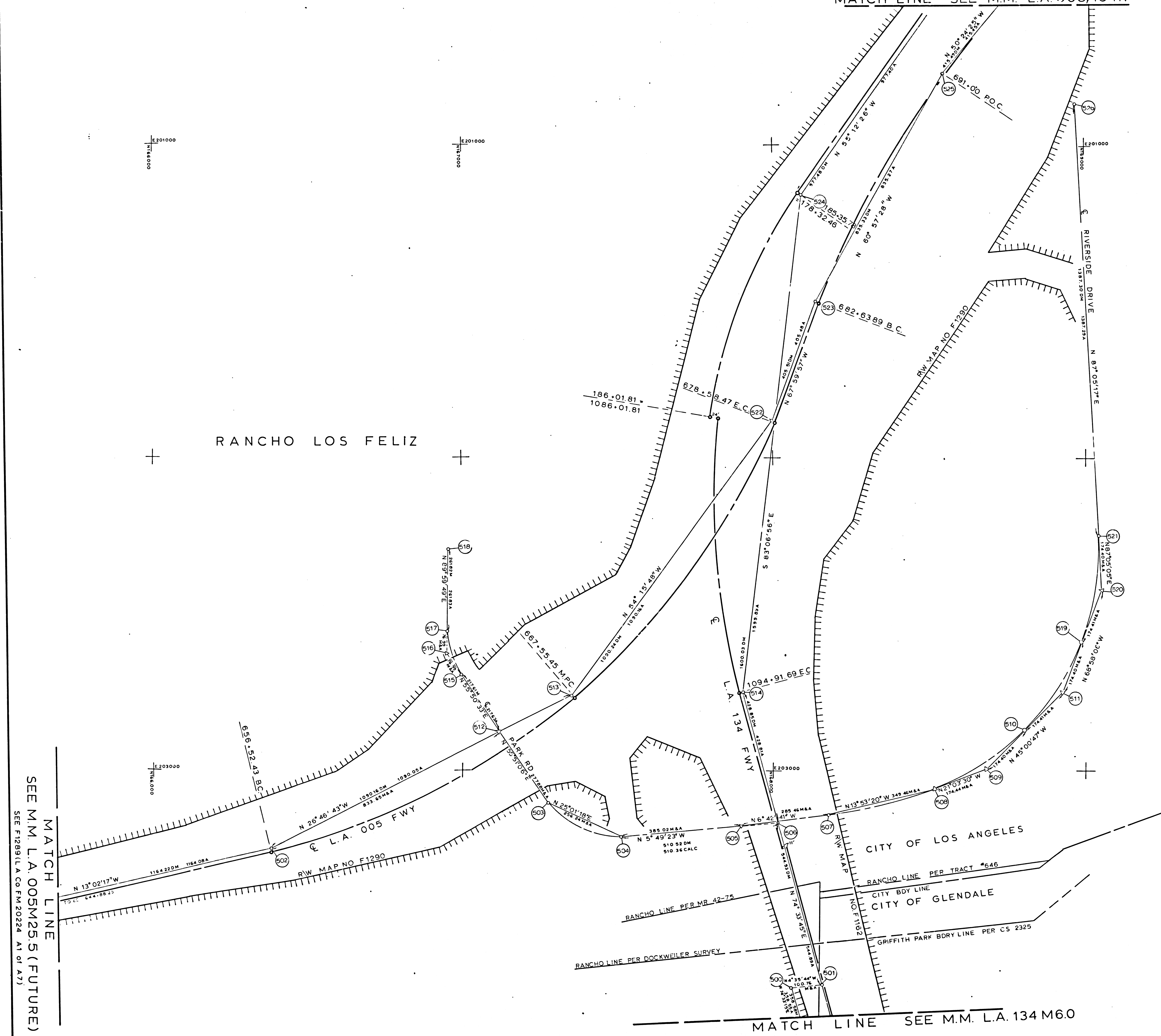


MATCH LINE SEE M.M. L.A.005/134N

NO	NAME	DESCRIPTION	REFERENCE	COORDINATES (±)
500		FD PK NAIL	SR 73-018 PG 23	
501		SET T BAR CAP	SR 73-018 PG 23	
502	PM 26.3	SET BRASS CAP MON	FLA 0051 PG 31	
503		FD SPK & W	SR 73-325 PG 48	
504		FD PK NAIL	ALA 134B PG 125	
505		FD PK NAIL	ALA 134B PG 125	
506		SET L&T	ALA 134B PG 125	
507		FD PK NAIL	SR 73-325 PG 52	
508		FD SPK & T	SR 73-325 PG 52	
509		FD SPK & T	SR 73-325 PG 52	
510		FD SPK & T	SR 73-325 PG 52	
511		FD SPK & T	SR 73-325 PG 52	
512		SET L&T & BATHY CAP	SR 73-325 PG 48	
513	PM 26.5	SET BRASS CAP MON	FLA 0051 PG 32	
514	PM 5.6	SET BRASS CAP MON	FLA 0051 PG 20	
515		SET PK NAIL	FLA 134B PG 29	
516		SET PK NAIL	FLA 134B PG 29	
517		SET PK NAIL	FLA 134B PG 29	
518		FD SPK & W	SR 73-018 PG 23	
519		FD SPK & T	SR 73-325 PG 52	
520		FD SPK & T	SR 73-325 PG 52	
521		FD SPK	SR 73-325 PG 52	
522	PM 26.7	SET BRASS CAP MON	FLA 0051 PG 33	
523	PM 26.8	SET BRASS CAP MON	FLA 0051 PG 34	
524	PM 5.3	SET BRASS CAP MON	FLA 0051 PG 21	
525	PM 27.0	SET BRASS CAP MON	FLA 0051 PG 35	
526		FD SPK	SR 73-325 PG 52	



SEE M.M. L.A. 005M25.5 (FUTURE)
SEE F1289(L.A. Co. FM 20224 AT 01 A7)

F.M. 21447-1

- LEGEND
- ⊙ — LOS ANGELES COUNTY SURVEY CONTROL POINTS
 - △ — PRIMARY CONTROL POINTS
 - ▲ — MONUMENTS SET OR FOUND, ALSO B.C.'S AND E.C.'S
 - ◊ — ANGLE POINTS
 - ◇ — SECTION CORNERS
 - M — GROUND DISTANCE MEASURED WITH CHAIN
 - DM — GROUND DISTANCE MEASURED WITH DISTOMAT
 - GM — GROUND DISTANCE MEASURED WITH GEODIMETER
 - A — ADJUSTED GROUND DISTANCE
 - Rec — RECORDED VALUE AS ESTABLISHED PREVIOUSLY
- SCALE 1"=100'

- NOTE
1. BEARINGS ARE BASED ON THE CALIFORNIA COORDINATE SYSTEM, DIVISION 8 & SECTION 8809 OF THE 1953 PUBLIC RESOURCES CODE, AND ARE DERIVED FROM THE MOST RECENT VALUES OF THE LOS ANGELES COUNTY SURVEY CONTROL POINTS, AS SHOWN.
 2. DEPARTMENT OF TRANSPORTATION SURVEY INFORMATION IS AVAILABLE FROM THE ENGINEERING SERVICES BRANCH, SURVEYS SECTION, LOS ANGELES, CALIFORNIA.
 3. DEPARTMENT OF TRANSPORTATION RIGHT OF WAY INFORMATION IS AVAILABLE FROM THE RIGHT OF WAY BRANCH, LOS ANGELES, CALIFORNIA.
 4. STATIONING SHOWN ON THIS MAP IS FOR REFERENCE ONLY.
 5. THIS MAP PARTIALLY OVERLAYS MAP F 1290 (L.A. Co FM 20226)

BLK. _____ MOD. _____
IN LOS ANGELES COUNTY

CONSTRUCTION CONTRACT NO. 07-020844
COMPLETION DATE: 9-16-67
SCALE: 1"=100'
100 200 300 400 500 FEET

LOS ANGELES COUNTY FILE NO.

STATE OF CALIFORNIA - DEPARTMENT OF TRANSPORTATION - SURVEYS			
DISTRICT	COUNTY	ROUTE	POST MILES - TOTAL PROJECT
07	L.A.	15/134	25.8-27.7

DATE	BY	DATE	BY
7-2-158	4-72		

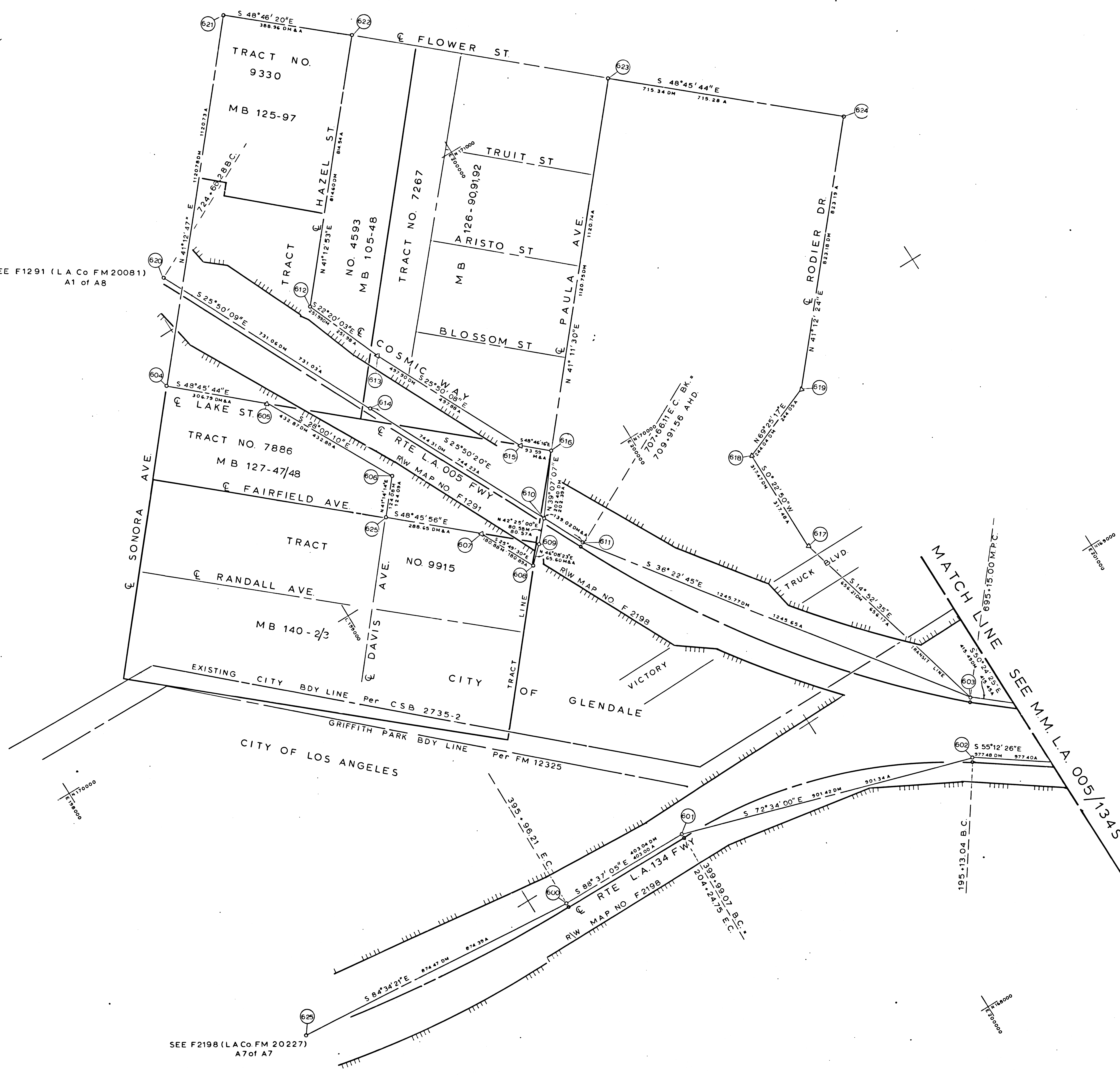
Initial Survey Request Completion Date

CALIFORNIA COORDINATE SYSTEM - ZONE 7 Date: April 1974

DATE	BY	DATE	BY

SEE F1291 (L.A. Co FM 20081)
A1 of A8

SEE F2198 (L.A. Co FM 20227)
A7 of A7



NO	NAME	DESCRIPTION	REFERENCE	COORDINATES (±)
600	PM 49	SET BRASS CAP MON	FLA 0051 PG 24	
601	PM 50	SET BRASS CAP MON	FLA 0051 PG 23	
602	PM 51	SET BRASS CAP MON	FLA 0051 PG 22	
603	PM 271	SET BRASS CAP MON	FLA 0051 PG 36	
604		FD SO SPK	SR 73-325 PG 3	
605		SET SPK & BATHY CAP	SR 73-325 PG 3	
606		FD SPK T&W	SR 73-325 PG 4	
607		FD SPK T&W	SR 73-325 PG 4	
608		SET SPK & BATHY CAP	SR 73-325 PG 4	
609		SET SPK & BATHY CAP	SR 73-325 PG 4	
610		SET SPK & BATHY CAP	SR 73-325 PG 4	
611	PM 273	SET BRASS CAP MON	FLA 0051 PG 37	
612		FD SPK T&W	SR 73-325 PG 3	
613		FD L&T	SR 73-325 PG 4	
614	PM 274	SET BRASS CAP MON	FLA 0051 PG 38	
615		FD SPK T&W	SR 73-325 PG 4	
616		SET SPK & BATHY CAP	SR 73-325 PG 4	
617		FD RR SPK	SR 73-325 PG 36	
618		SET SPK & BATHY CAP	SR 73-325 PG 36	
619		FD SPK & T	SR 73-325 PG 36	
620		SET BRASS CAP MON	SR 73-325 PG 2	
621		FD SO SPK	SR 73-325 PG 3	
622		FD & RESET SO SPK	SR 73-325 PG 3	
623		FD 4 PMS ON MH RIM	SR 73-325 PG 36	
624		FD 4 PMS ON MH RIM	SR 73-325 PG 36	
625	PM 47	SET BRASS CAP MON	FLA 0051 PG 25	

F.M. 21447-2

- LEGEND
- ⊙ — LOS ANGELES COUNTY SURVEY CONTROL POINTS
 - — PRIMARY CONTROL POINTS
 - △ — MONUMENTS SET OR FOUND, ALSO B.C.'S AND E.C.'S
 - ◇ — ANGLE POINTS
 - ◊ — SECTION CORNERS
 - M — GROUND DISTANCE MEASURED WITH CHAIN
 - DM — GROUND DISTANCE MEASURED WITH DISTOMAT
 - GM — GROUND DISTANCE MEASURED WITH GEODIMETER
 - A — ADJUSTED GROUND DISTANCE
 - REC — RECORDED VALUE AS ESTABLISHED PREVIOUSLY

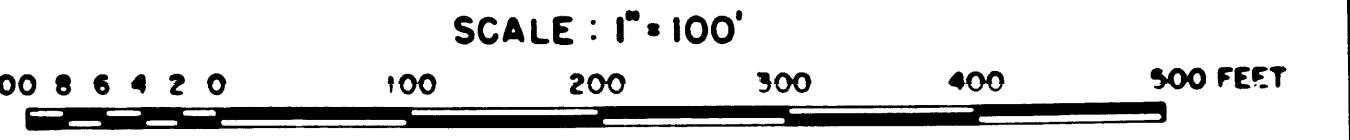


NOTE

1. BEARINGS ARE BASED ON THE CALIFORNIA COORDINATE SYSTEM, DIVISION 8, SECTION 8809 OF THE 1953 PUBLIC RESOURCES CODE, AND ARE DERIVED FROM THE MOST RECENT VALUES OF THE LOS ANGELES COUNTY SURVEY CONTROL POINTS, AS SHOWN.
2. DEPARTMENT OF TRANSPORTATION SURVEY INFORMATION IS AVAILABLE FROM THE ENGINEERING SERVICES BRANCH, SURVEYS SECTION, LOS ANGELES, CALIFORNIA.
3. DEPARTMENT OF TRANSPORTATION RIGHT OF WAY INFORMATION IS AVAILABLE FROM THE RIGHT OF WAY BRANCH, LOS ANGELES, CALIFORNIA.
4. STATIONING SHOWN ON THIS MAP IS FOR REFERENCE ONLY.
5. THIS MAP PARTIALLY OVERLAYS MAP F 1290 (L.A. Co FM 20226) BLK. MOD.

IN LOS ANGELES COUNTY

CONSTRUCTION CONTRACT NO. 07-020844
COMPLETION DATE: 9-16-67



LOS ANGELES COUNTY FILE NO.

STATE OF CALIFORNIA - DEPARTMENT OF TRANSPORTATION - SURVEYS			
DISTRICT	COUNTY	ROUTE	PROJECT
07	LA	134	258-277

MONUMENTATION MAP	
Map No. L.A. 005/134N	Scale: 1"=100'
72-158	4-72
Inlet Survey Request	Completion Date
Surv. Req. 73-325	
Rev. By S.L.S.	
Date 3-74	

CALIFORNIA COORDINATE SYSTEM - ZONE 7

FM 21447-2