

| NO. | DESCRIPTION | REFERENCE |
|-----|-------------------|--------------|
| 1 | BR CAP IN 2" IP | FLA210F-0050 |
| 2 | BR CAP IN 2" IP | FLA210F-0053 |
| 3 | SET S.S.M. | FLA210F-0065 |
| 4 | BR CAP IN 2" IP | FLA210F-0066 |
| 5 | FD SPK | M3.001-3 |
| 6 | FD TYPE 'B' MON | FLA210F-0001 |
| 7 | FD NAIL | M3.001-5 |
| 8 | FD SPK & W | FLA210F-0095 |
| 9 | FD CO MON IN HH | ALA210E-457 |
| 10 | FD CO MON IN HH | ALA210E-457 |
| 11 | FD SPK | M3.001-11 |
| 12 | FD MH W/4 STRADS | M3.001-3 |
| 13 | SET SPK R W | ARP, 001-10 |
| 14 | FD CO RD DEPT MON | ALA210E-497 |
| 15 | FD SPK & T | M3.001-10 |
| 16 | FD SPK & T | ARP, 001-10 |
| 17 | FD SPK T R W | ALA210F-300 |
| 18 | FD SPK T R W | ALA210F-300 |
| 19 | FD SPK P T | ALA210F-470 |
| 20 | FD SPK P T | ALA210F-470 |
| 21 | SET SPK P W | ALA210F-467 |
| 22 | SET SPK P W | ALA210F-467 |
| 23 | SET SPK R W | ALA210F-470 |
| 24 | FD SPK & T | ARP, 001-10 |
| 25 | SET SPK P W | ALA210F-464 |
| 26 | SET SPK P W | ALA210F-464 |
| 27 | SET SPK P W | ALA210F-463 |
| 28 | SET SPK P W | ALA210F-463 |
| 29 | SET SPK P W | ALA210F-463 |
| 30 | FD SPK R W | ALA210F-462 |
| 31 | FD SPK R W | ALA210F-462 |
| 32 | SET SPK R W | ALA210F-462 |
| 33 | FD 'C' NAIL | ALA210F-300 |
| 34 | FD 'C' NAIL | ALA210F-300 |
| 35 | FD 'C' NAIL | ALA210F-300 |

F.M. 21448-1

LEGEND

| | |
|------|--|
| ⊙ | LOS ANGELES COUNTY SURVEY CONTROL POINTS |
| △ | PRELIMINARY CONTROL POINTS |
| ○ | MONUMENTS SET OR FOUND, ALSO B.C.'S AND E.C.'S |
| ◇ | ANGLE POINTS |
| ◊ | SECTION CORNERS |
| M | GROUND DISTANCE MEASURED WITH CHAIN |
| DM | GROUND DISTANCE MEASURED WITH DISTOMETER |
| GM | GROUND DISTANCE MEASURED WITH GEODIMETER |
| A | ADJUSTED GRID DISTANCE |
| Rec. | RECORDED VALUE AS ESTABLISHED PREVIOUSLY |

NOTE

- BEARINGS ARE BASED ON THE CALIFORNIA COORDINATE SYSTEM, DIVISION 8, SECTION 8009 OF THE 1953 PUBLIC RESOURCES CODE, AND ARE DERIVED FROM THE 1951 VALUE OF THE LOS ANGELES COUNTY SURVEY CONTROL POINTS AS SHOWN.
- DIVISION OF HIGHWAYS SURVEY INFORMATION IS AVAILABLE FROM THE ENGINEERING SERVICES DEPARTMENT, LOS ANGELES, CALIFORNIA.
- DIVISION OF HIGHWAYS RIGHT OF WAY INFORMATION IS AVAILABLE FROM THE RIGHT OF WAY DEPARTMENT, LOS ANGELES, CALIFORNIA.
- STATIONING SHOWN ON THIS MAP IS FOR REFERENCE ONLY.

IN LOS ANGELES COUNTY

CONSTRUCTION CONTRACT NO. 033254
COMPLETION DATE: JAN 2, 1970

SCALE: 1" = 100'

100 200 300 400 500 FEET

LOS ANGELES COUNTY FILE NO.

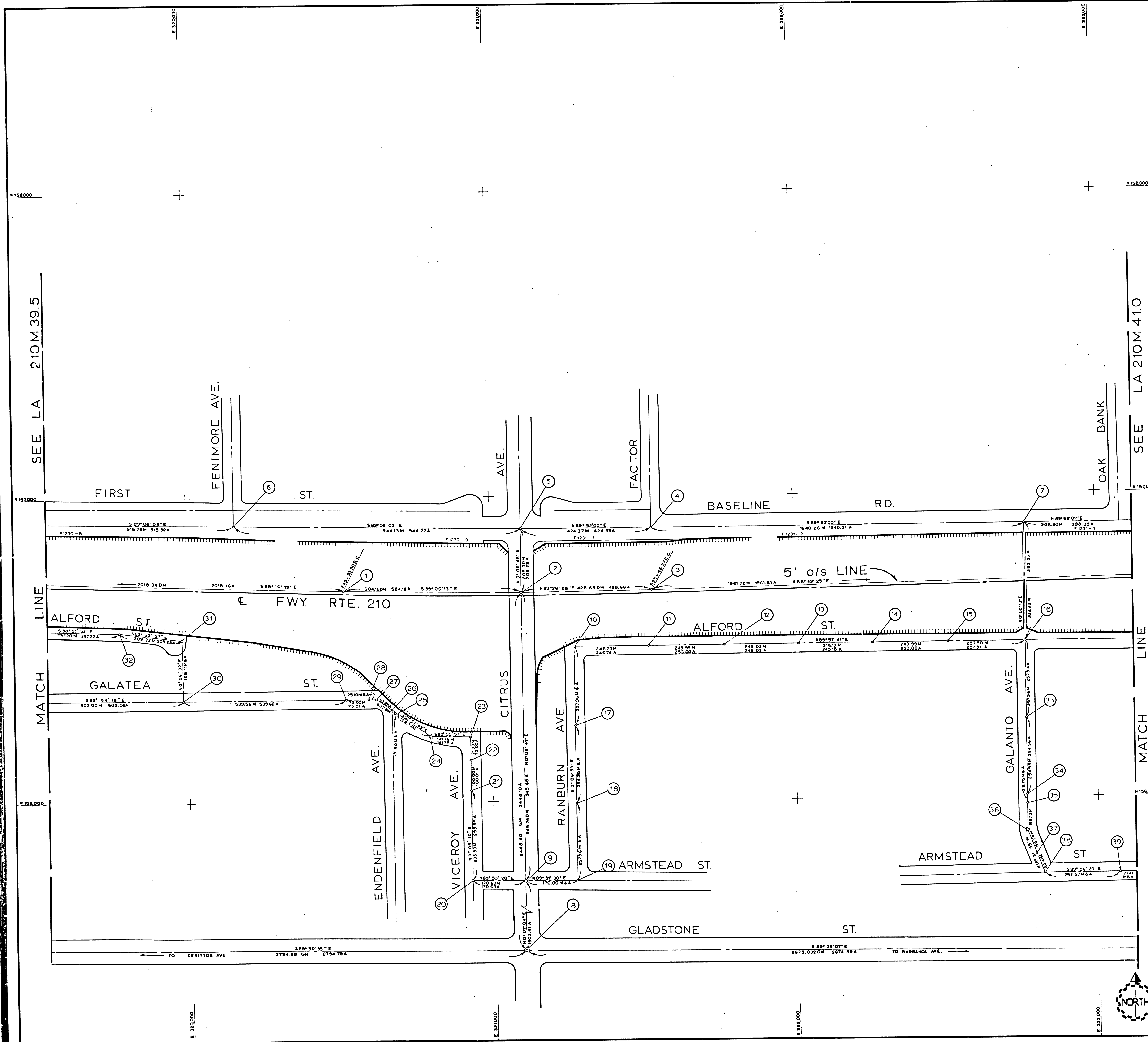
| | | | | | |
|----------|--------|-------|----------------------------|-----------|--------------|
| DISTRICT | COUNTY | ROUTE | POST MILES - TOTAL PROJECT | SHEET NO. | TOTAL SHEETS |
| 07 | LA | 210 | 35.6 / 41.6 | 1 | 3 |

Surveyed by: J.G. HARRIS
Checked by: L. PRICE, J. KRAS
Project Engineer: J. KRAS, L. PRICE
Survey Office Supervisor: D. EBERLY

MONUMENTATION MAP
CALIFORNIA COORDINATE SYSTEM - ZONE 7
MAP NO. LA 210M39.5

Surveyed by: J.G. HARRIS
Checked by: L. PRICE, J. KRAS
Project Engineer: J. KRAS, L. PRICE
Survey Office Supervisor: D. EBERLY

APRIL 1974



| NO. | DESCRIPTION | FLA210F-60 |
|-----|--------------------|-------------|
| 1 | FD BR CAP IN 2" IP | FLA210F-60 |
| 2 | SET RH NAIL | FLA210F-60 |
| 3 | FD BR CAP IN 2" IP | FLA210F-60 |
| 4 | SET SSM BY INT | A48.001-13 |
| 5 | FD TYPE 'B' MON | FLA210F-008 |
| 6 | FD SPK & T | A48.001-12 |
| 7 | SET SPK & T | A48.001-14 |
| 8 | FD LA CO SUR MON | A48.001-13 |
| 9 | FD S & T | A48.001-13 |
| 10 | FD S & T | A48.001-13 |
| 11 | FD S & T | A48.001-13 |
| 12 | FD S & T | A48.001-13 |
| 13 | FD S & T | A48.001-13 |
| 14 | FD S & T | A48.001-13 |
| 15 | FD S & T | A48.001-13 |
| 16 | FD S & T | A48.001-13 |
| 17 | FD S & T | A48.001-13 |
| 18 | FD S & T | A48.001-13 |
| 19 | FD S & T | A48.001-13 |
| 20 | SET SPK & W | ALA210F-474 |
| 21 | FD SPK & W | ALA210F-474 |
| 22 | FD SPK & W | ALA210F-473 |
| 23 | SET SPK & W | ALA210F-473 |
| 24 | SET 2x2 DN 0.5 FT | ALA210F-473 |
| 25 | SET SPK & W | ALA210F-472 |
| 26 | SET SPK & W | ALA210F-472 |
| 27 | SET SPK & W | ALA210F-472 |
| 28 | FD SPK & W | ALA210F-472 |
| 29 | FD SPK & W | ALA210F-472 |
| 30 | SET SPK & W | ALA210F-470 |
| 31 | SET SSMTC | ALA210F-470 |
| 32 | SET R SSM TIES | ALA210F-470 |
| 33 | FD SPK & T | A48.001-14 |
| 34 | FD SPK & T | A48.001-14 |
| 35 | FD SPK & T | A48.001-14 |
| 36 | FD PK NAIL | A48.001-14 |
| 37 | FD SPK & T | A48.001-14 |
| 38 | FD SPK & T | A48.001-14 |
| 39 | FD SPK & T | A48.001-14 |

F.M. 21448-2

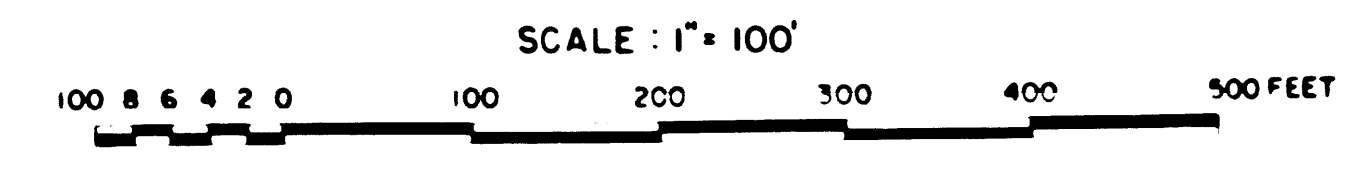
LEGEND

| | |
|------|--|
| ⊙ | LOS ANGELES COUNTY SURVEY CONTROL POINTS |
| ▲ | PRELIMINARY CONTROL POINTS |
| ○ | MONUMENTS SET OR FOUND, ALSO B.C.'S AND E.C.'S |
| △ | ANGLE POINTS |
| ◇ | SECTION CORNERS |
| M | GROUND DISTANCE MEASURED WITH CHAIN |
| DM | GROUND DISTANCE MEASURED WITH DISTOMAT |
| GM | GROUND DISTANCE MEASURED WITH GEODIMETER |
| A | ADJUSTED GRID DISTANCE |
| Rec. | RECORDED VALUE AS ESTABLISHED PREVIOUSLY |

NOTE:
 1. BEARINGS ARE BASED ON THE CALIFORNIA COORDINATE SYSTEM, DIVISION 8, SECTION 8009 OF THE 1953 PUBLIC RESOURCES CODE, AND ARE DERIVED FROM THE 1971 VALUE OF THE LOS ANGELES COUNTY SURVEY CONTROL POINTS AS SHOWN.
 2. DIVISION OF HIGHWAYS SURVEY INFORMATION IS AVAILABLE FROM THE ENGINEERING SERVICES DEPARTMENT, LOS ANGELES, CALIFORNIA.
 3. DIVISION OF HIGHWAYS RIGHT OF WAY INFORMATION IS AVAILABLE FROM THE RIGHT OF WAY DEPARTMENT, LOS ANGELES, CALIFORNIA.
 4. STATIONING SHOWN ON THIS MAP IS FOR REFERENCE ONLY.

IN LOS ANGELES COUNTY

CONSTRUCTION CONTRACT NO. 033254
 COMPLETION DATE: JAN 2, 1970



LOS ANGELES COUNTY FILE NO.

| | | | | | |
|----------|--------|-------|----------------------------|-----------|--------------|
| DISTRICT | COUNTY | ROUTE | POST MILES - TOTAL PROJECT | SHEET NO. | TOTAL SHEETS |
| 07 | LA | 210 | 35.6 / 41.6 | 2 | 3 |

DATE OF SURVEY: APRIL 1974
 DISTRICT SURVEY ENGINEER: J.G. HARRIS
 PROJECT ENGINEER: L. PRICE
 CHECKED BY: J. KRASZEW
 SURVEY OFFICE SUPERVISOR: L. PRICE
 DATE: APRIL 1974

| NO. | DESCRIPTION | REFERENCE |
|-----|------------------------------|-------------|
| 1 | FD BR CAP IN 2" IP | FLA210F-C2 |
| 2 | SET CHIS "X" IN BR DECK | FLA210F-C2 |
| 3 | SET SPK & W | ALA210F-481 |
| 4 | SET SPK & W | ALA210F-481 |
| 5 | FD BT SPK T & W | ALA210F-C41 |
| 6 | FD SPK & W | A#8.001-19 |
| 7 | FD SPK & W | A#8.001-19 |
| 8 | FD BR CAP IN 2" IP | FLA210F-C2 |
| 9 | FD BR CAP IN 2" IP | FLA210F-C2 |
| 10 | FD L & T IN BR DECK IN 2" IP | FLA210F-C2 |
| 11 | FD S & T | A#8.001-19 |
| 12 | FD S, T & W | A#8.001-20 |
| 13 | FD S, T & W | A#8.001-20 |
| 14 | SET S & W | A#8.001-20 |
| 15 | FD S, T & W | A#8.001-20 |
| 16 | FD S & T | A#8.001-20 |
| 17 | FD S & T | A#8.001-18 |
| 18 | FD S & T | ALA210F-481 |
| 19 | FD LACE SUR MON | ALA210F-641 |
| 20 | FD LACE SUR MON | FLA210F-C41 |
| 21 | FD LACE SUR MON | FLA210F-C41 |
| 22 | FD S & T | A#8.001-13 |
| 23 | SET SSM | FLA210F-005 |
| 24 | FD S & T | ALA210F-481 |
| 26 | SET SPK & W | ALA210F-481 |
| 27 | SET SPK & W | ALA210F-485 |
| 28 | SET SPK & W | ALA210F-485 |
| 29 | SET SPK & W | ALA210F-524 |
| 30 | SET SPK & W | ALA210F-481 |
| 31 | FD L & T & TAG | A#8.001-17 |
| 32 | FD SPK & T | A#8.001-17 |
| 33 | SET SPK & W | A#8.001-17 |
| 34 | FD SPK & T | A#8.001-17 |
| 35 | FD SPK & T | A#8.001-17 |
| 36 | SET SPK & W | A#8.001-17 |

F.M. 21448-3

LEGEND

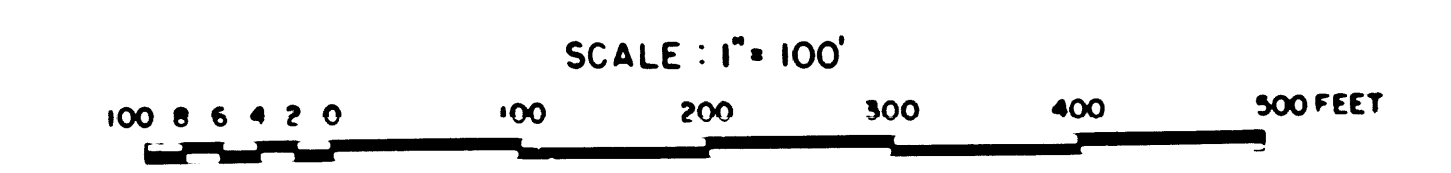
| | |
|------|--|
| ⊙ | LOS ANGELES COUNTY SURVEY CONTROL POINTS |
| △ | PRELIMINARY CONTROL POINTS |
| ○ | MONUMENTS SET OR FOUND, ALSO B.C.'S AND E.C.'S |
| ∠ | ANGLE POINTS |
| ◇ | SECTION CORNERS |
| M | GROUND DISTANCE MEASURED WITH CHAIN |
| DM | GROUND DISTANCE MEASURED WITH DISTOMAT |
| GM | GROUND DISTANCE MEASURED WITH GEODIMETER |
| A | ADJUSTED GRID DISTANCE |
| REC. | RECORDED VALUE AS ESTABLISHED PREVIOUSLY |

NOTE

- BEARINGS ARE BASED ON THE CALIFORNIA COORDINATE SYSTEM, DIVISION 8, SECTION 8809 OF THE 1953 PUBLIC RESOURCES CODE, AND ARE DERIVED FROM THE 1971 VALUE OF THE LOS ANGELES COUNTY SURVEY CONTROL POINTS AS SHOWN.
- DIVISION OF HIGHWAYS SURVEY INFORMATION IS AVAILABLE FROM THE ENGINEERING SERVICES DEPARTMENT, LOS ANGELES, CALIFORNIA.
- DIVISION OF HIGHWAYS RIGHT OF WAY INFORMATION IS AVAILABLE FROM THE RIGHT OF WAY DEPARTMENT, LOS ANGELES, CALIFORNIA.
- STATIONING SHOWN ON THIS MAP IS FOR REFERENCE ONLY.

IN LOS ANGELES COUNTY

CONSTRUCTION CONTRACT NO. 033254
COMPLETION DATE: JAN. 2, 1970



LOS ANGELES COUNTY FILE NO.

| DISTRICT | COUNTY | ROUTE | POST MILES - TOTAL PROJECT | SHEET NO. | TOTAL SHEETS |
|----------|--------|-------|----------------------------|-----------|--------------|
| 07 | LA | 210 | 35.6 / 41.6 | 3 | 3 |

Prepared by: J.G. HARRIS
Checked by: L. PRICE, J. KRAS
Project Engineer: J. KRAS, L. PRICE
District Survey Engineer: D. EBERLY
Date: APRIL 1970

