

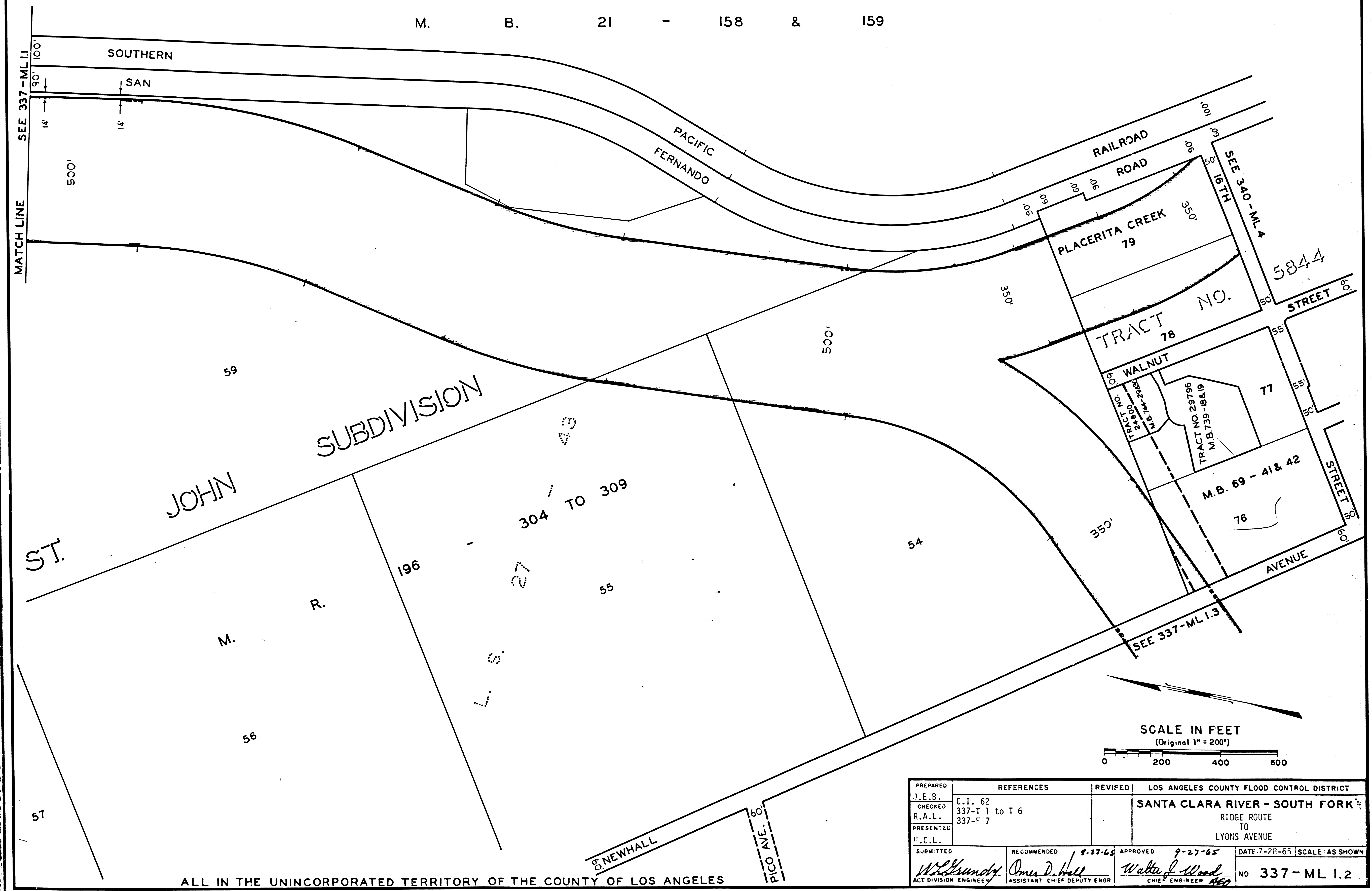
ALL IN THE UNINCORPORATED TERRITORY OF THE COUNTY OF LOS ANGELES

PREPARED J.E.P.	REFERENCES C.I. 62 337-T 1 to T 6	REVISED	LOS ANGELES COUNTY FLOOD CONTROL DISTRICT	
CHECKED R.A.L.	337-F 7		SANTA CLARA RIVER - SOUTH FORK	
PRESENTED H.C.L.			RIDGE ROUTE TO LYONS AVENUE	
SUBMITTED <i>W.H. Brundage</i>	RECOMMENDED <i>Oliver D. Hall</i>	APPROVED <i>Walter J. Wood</i>	DATE 7-28-65	SCALE: AS SHOWN
ACT. DIVISION ENGINEER	ASSISTANT CHIEF DEPUTY ENGR	CHIEF ENGINEER	NO. 337-ML I.1	

F.M. 21454-1

TRACT NO. 1801

M. B. 21 - 158 & 159



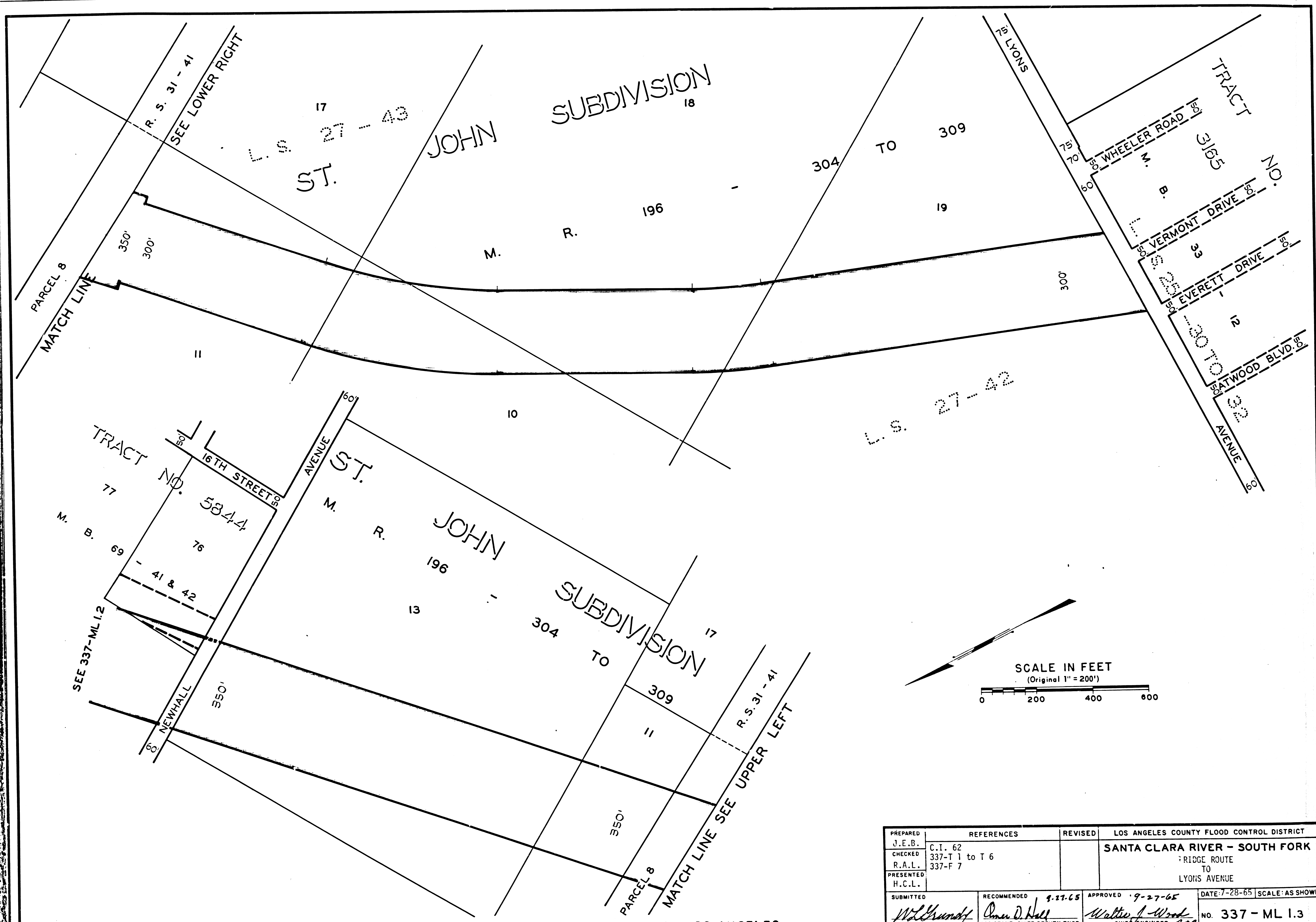
SCALE IN FEET
(Original 1" = 200')

0 200 400 600

ALL IN THE UNINCORPORATED TERRITORY OF THE COUNTY OF LOS ANGELES

PREPARED J.E.B.	REFERENCES C.I. 62 337-T 1 to T 6	REVISED	LOS ANGELES COUNTY FLOOD CONTROL DISTRICT
CHECKED R.A.L.	337-F 7		SANTA CLARA RIVER - SOUTH FORK
PRESENTED H.C.L.			RIDGE ROUTE TO LYONS AVENUE
SUBMITTED <i>W.L. Grundy</i>	RECOMMENDED <i>Omer D. Hall</i>	9-27-65	APPROVED <i>Walter J. Wood</i>
ACT DIVISION ENGINEER	ASSISTANT CHIEF DEPUTY ENGR		CHIEF ENGINEER
			DATE 7-28-65 SCALE: AS SHOWN
			NO. 337-ML 1.2

F.M. 21454-2



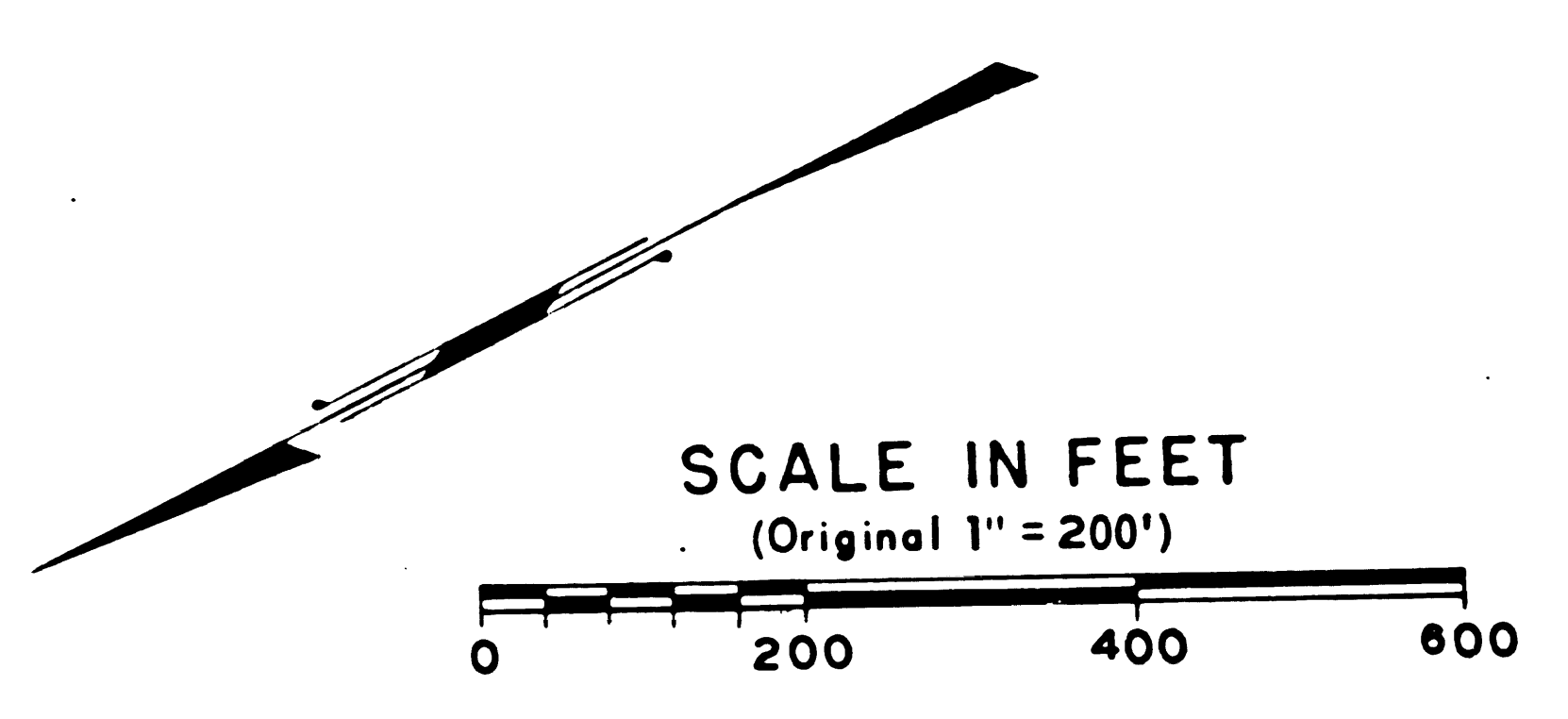
L.S. 27-42

R.S. 31-41
SEE LOWER RIGHT

PARCEL 8
MATCH LINE

SEE 337-ML 1.2

R.S. 31-41
MATCH LINE SEE UPPER LEFT

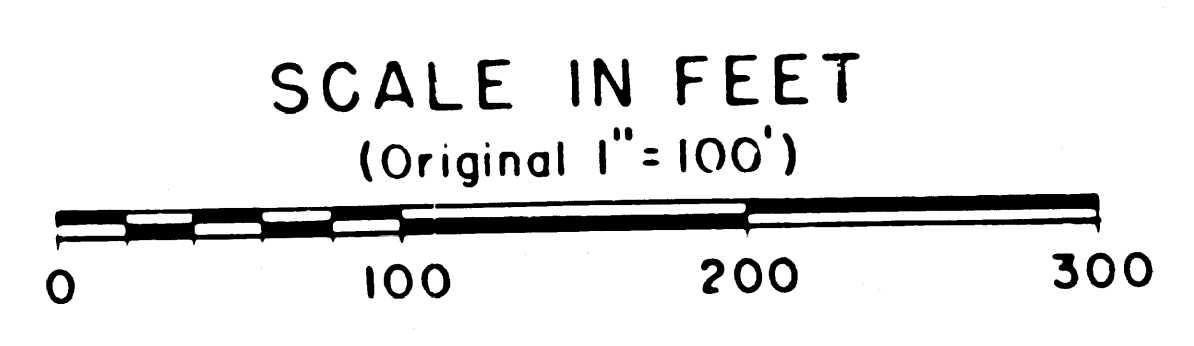
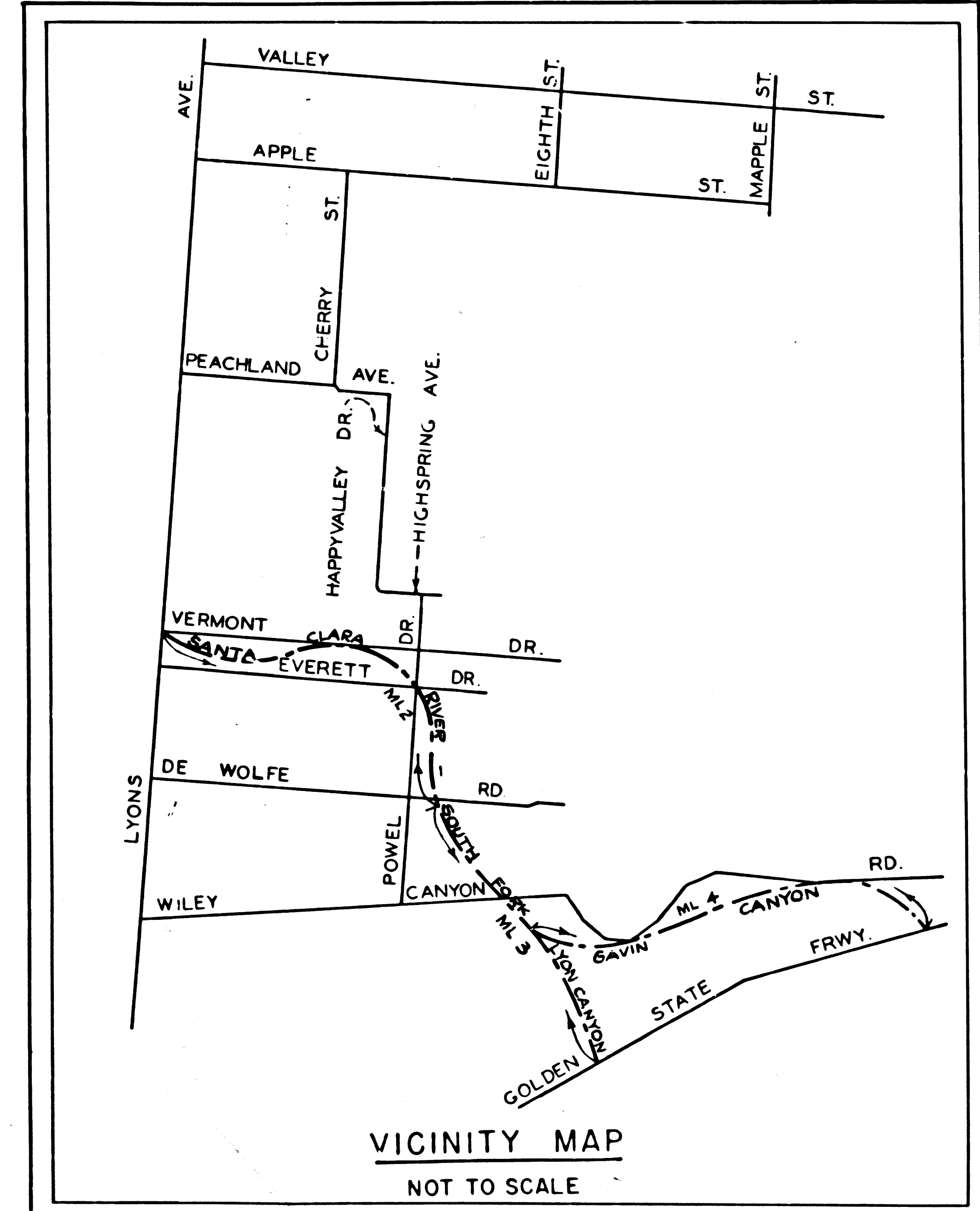
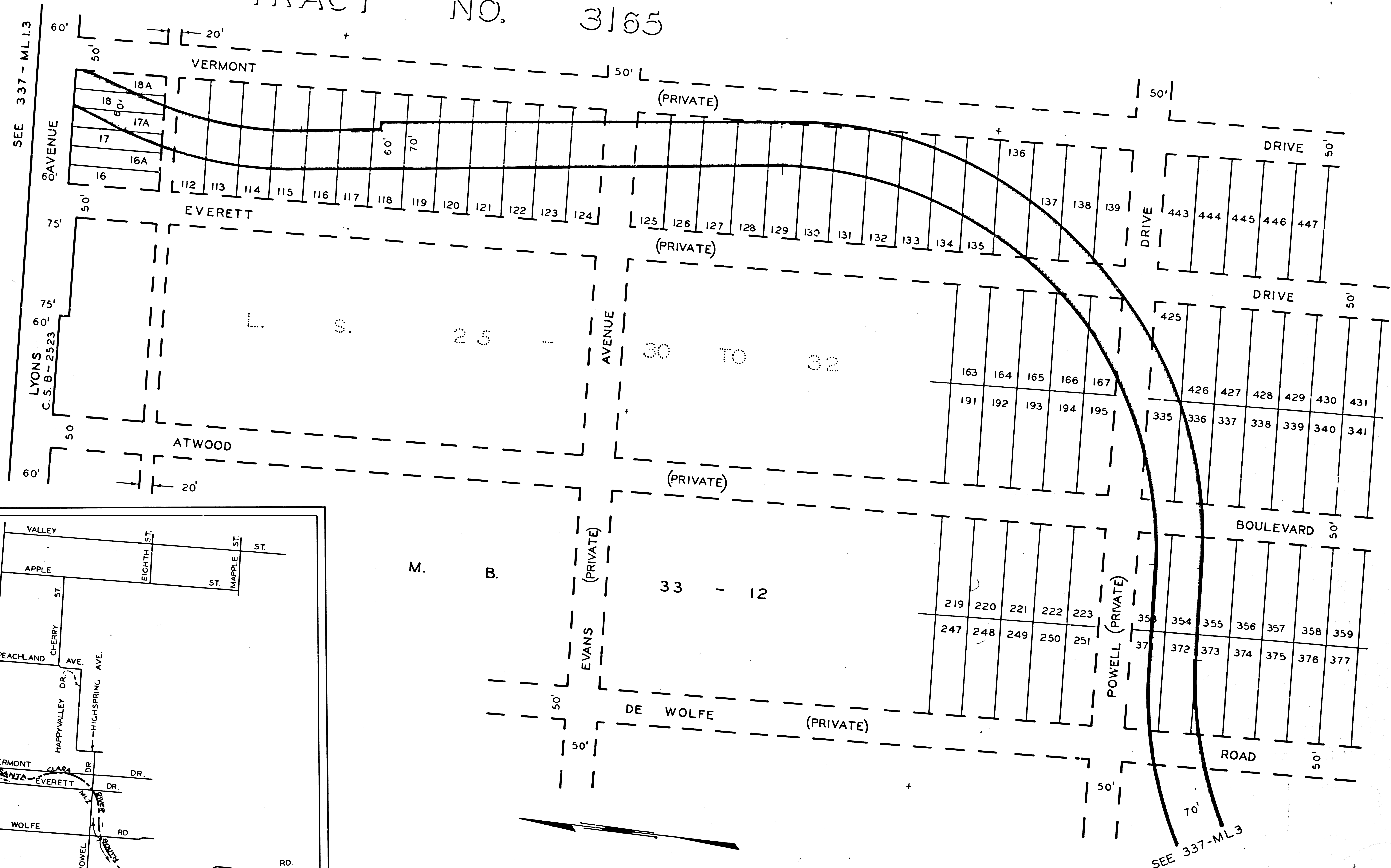


ALL IN THE UNINCORPORATED TERRITORY OF THE COUNTY OF LOS ANGELES

PREPARED J.E.B.	REFERENCES C.I. 62 337-T 1 to T 6	REVISED	LOS ANGELES COUNTY FLOOD CONTROL DISTRICT SANTA CLARA RIVER - SOUTH FORK RIDGE ROUTE TO LYONS AVENUE
CHECKED R.A.L.	337-F 7		
PRESENTED H.C.L.			
SUBMITTED <i>W. J. Wood</i> ACT. DIVISION ENGINEER	RECOMMENDED <i>James D. Hall</i> ASSISTANT CHIEF DEPUTY ENGR	APPROVED <i>Walter J. Wood</i> CHIEF ENGINEER	DATE: 7-28-65 SCALE: AS SHOWN NO. 337-ML 1.3

F.M. 21454-3

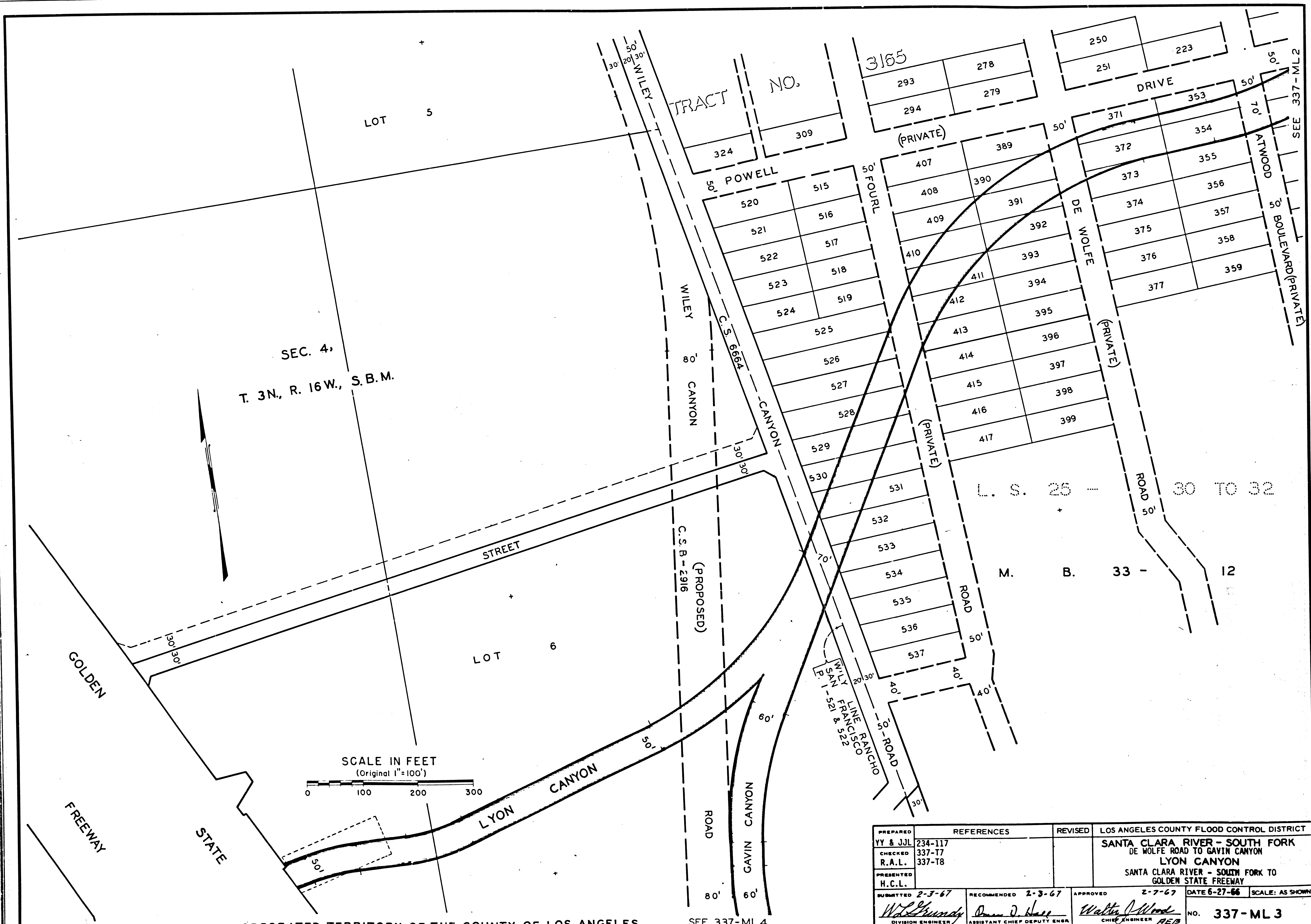
TRACT NO. 3165



ALL IN THE UNINCORPORATED TERRITORY OF THE COUNTY OF LOS ANGELES

PREPARED YY & JLL	REFERENCES 234-117 249-117 337-T4 337-T7 337-T8	REVISED	LOS ANGELES COUNTY FLOOD CONTROL DISTRICT SANTA CLARA RIVER-SOUTH FCRK LYONS AVENUE TO DE WOLFE ROAD
CHECKED R.A.L.			
PRESENTED H.C.L.			
SUBMITTED 2-3-67	RECOMMENDED 2-3-67	APPROVED 2-7-67	DATE 6-27-66 SCALE: AS SHOWN
<i>W.L. Gundy</i> DIVISION ENGINEER	<i>Oliver D. Hall</i> ASSISTANT CHIEF DEPUTY ENGR	<i>Walter J. Wood</i> CHIEF ENGINEER	NO. 337-ML2

F.M. 21454-4



SEC. 4,
T. 3N., R. 16W., S.B.M.

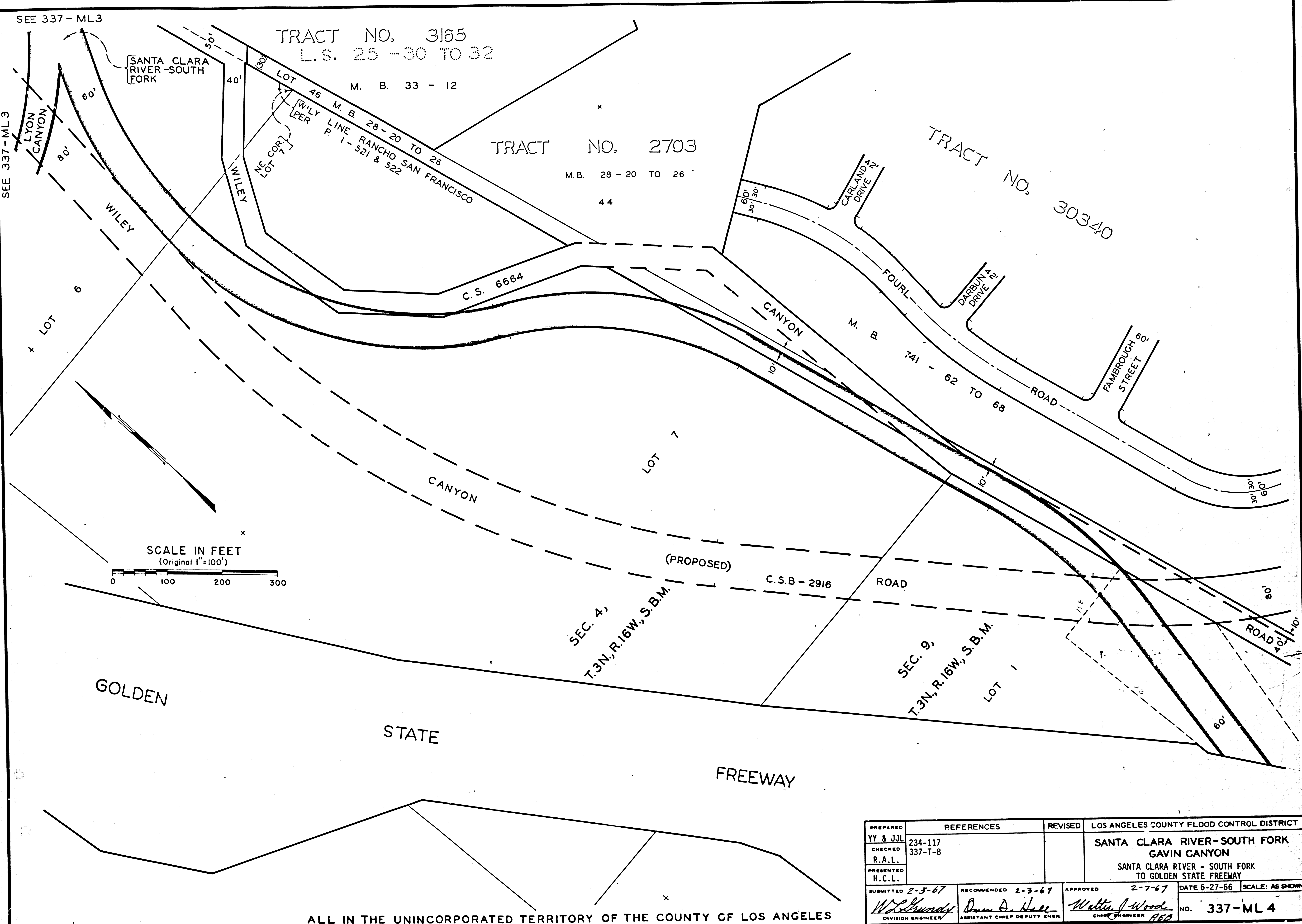
SCALE IN FEET
(Original 1"=100')

ALL IN THE UNINCORPORATED TERRITORY OF THE COUNTY OF LOS ANGELES

SEE 337-ML 4

PREPARED YY & J.J.L.	REFERENCES 234-117 337-T7 337-T8	REVISED	LOS ANGELES COUNTY FLOOD CONTROL DISTRICT
CHECKED R.A.L.			SANTA CLARA RIVER - SOUTH FORK DE WOLFE ROAD TO GAVIN CANYON LYON CANYON
PRESENTED H.C.L.			SANTA CLARA RIVER - SOUTH FORK TO GOLDEN STATE FREEWAY
SUBMITTED 2-3-67	RECOMMENDED 2-3-67	APPROVED 2-7-67	DATE 6-27-66 SCALE: AS SHOWN
<i>Walter J. Wood</i> DIVISION ENGINEER	<i>James V. Hase</i> ASSISTANT CHIEF DEPUTY ENGR.	<i>Walter J. Wood</i> CHIEF ENGINEER	NO. 337-ML 3

F.M. 21454 - 5



ALL IN THE UNINCORPORATED TERRITORY OF THE COUNTY OF LOS ANGELES

PREPARED YY & JJJ	REFERENCES 234-117 337-T-8	REVISED	LOS ANGELES COUNTY FLOOD CONTROL DISTRICT
CHECKED R.A.L.			SANTA CLARA RIVER-SOUTH FORK GAVIN CANYON
PRESENTED H.C.L.			SANTA CLARA RIVER - SOUTH FORK TO GOLDEN STATE FREEWAY
SUBMITTED 2-3-67	RECOMMENDED 2-3-67	APPROVED 2-7-67	DATE 6-27-66 SCALE: AS SHOWN
<i>W.L. Shandy</i> DIVISION ENGINEER	<i>Orman A. Hall</i> ASSISTANT CHIEF DEPUTY ENGR.	<i>Walter J. Wood</i> CHIEF ENGINEER	NO. 337-ML 4

F.M. 21454-6