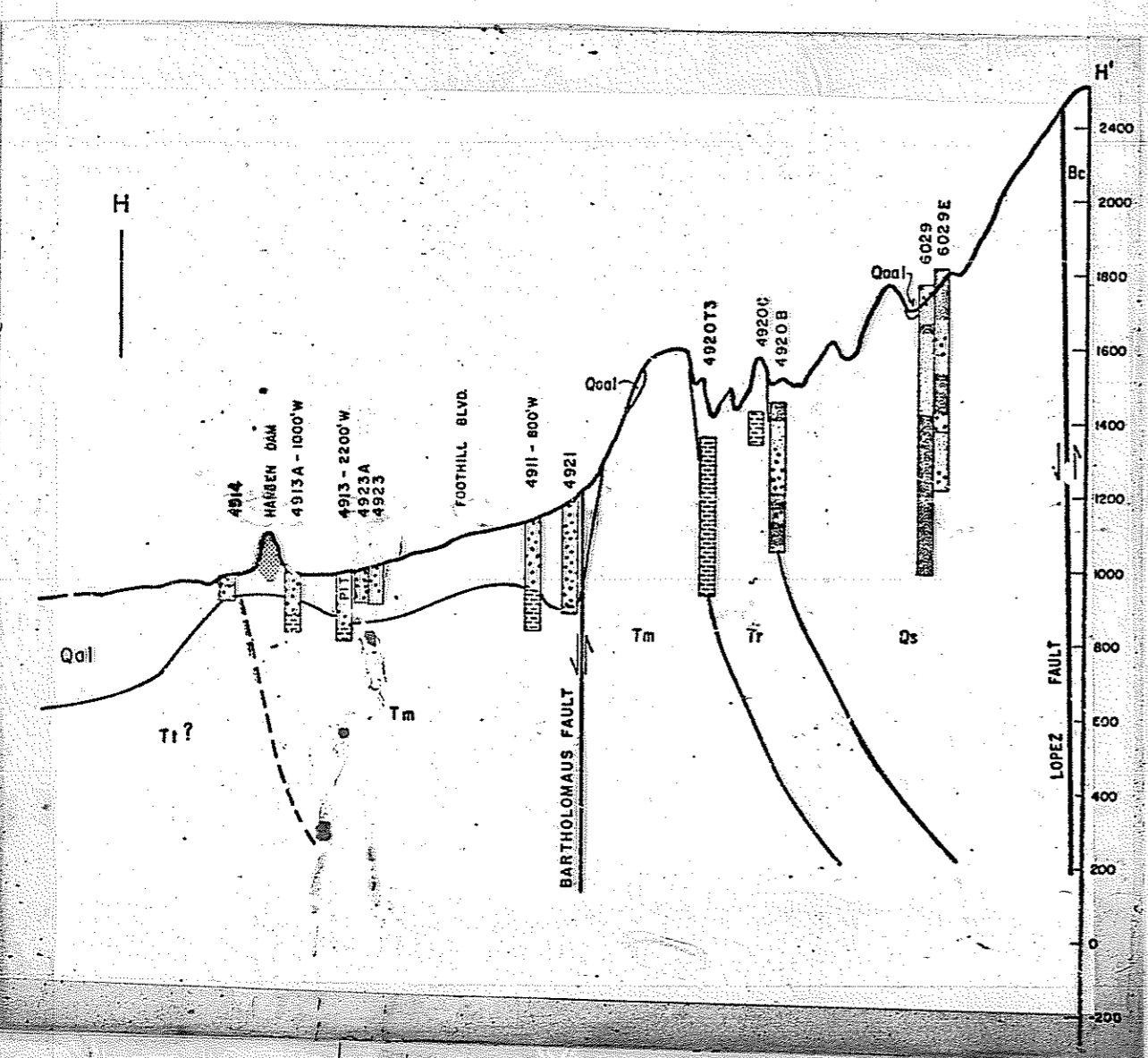
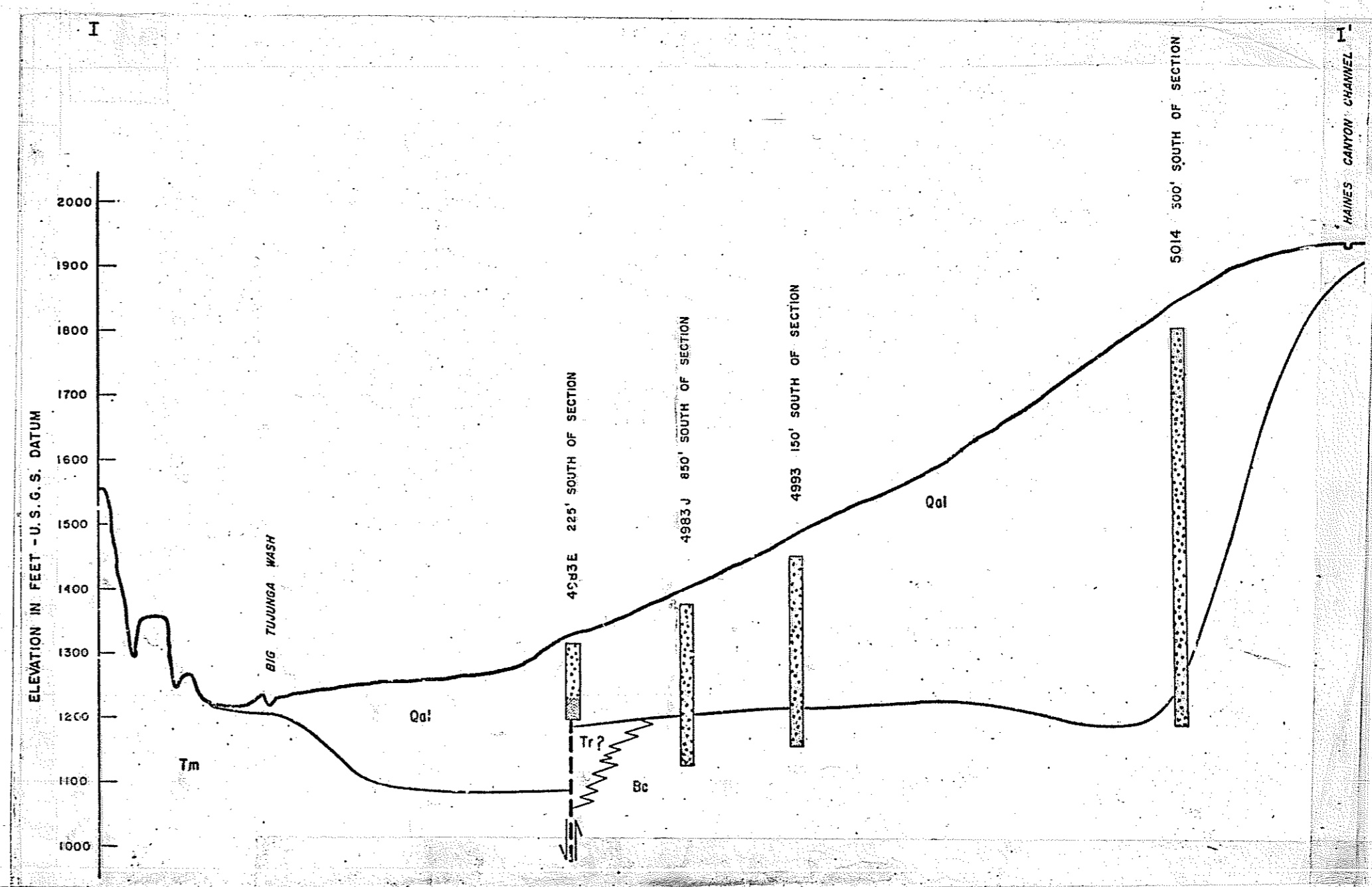
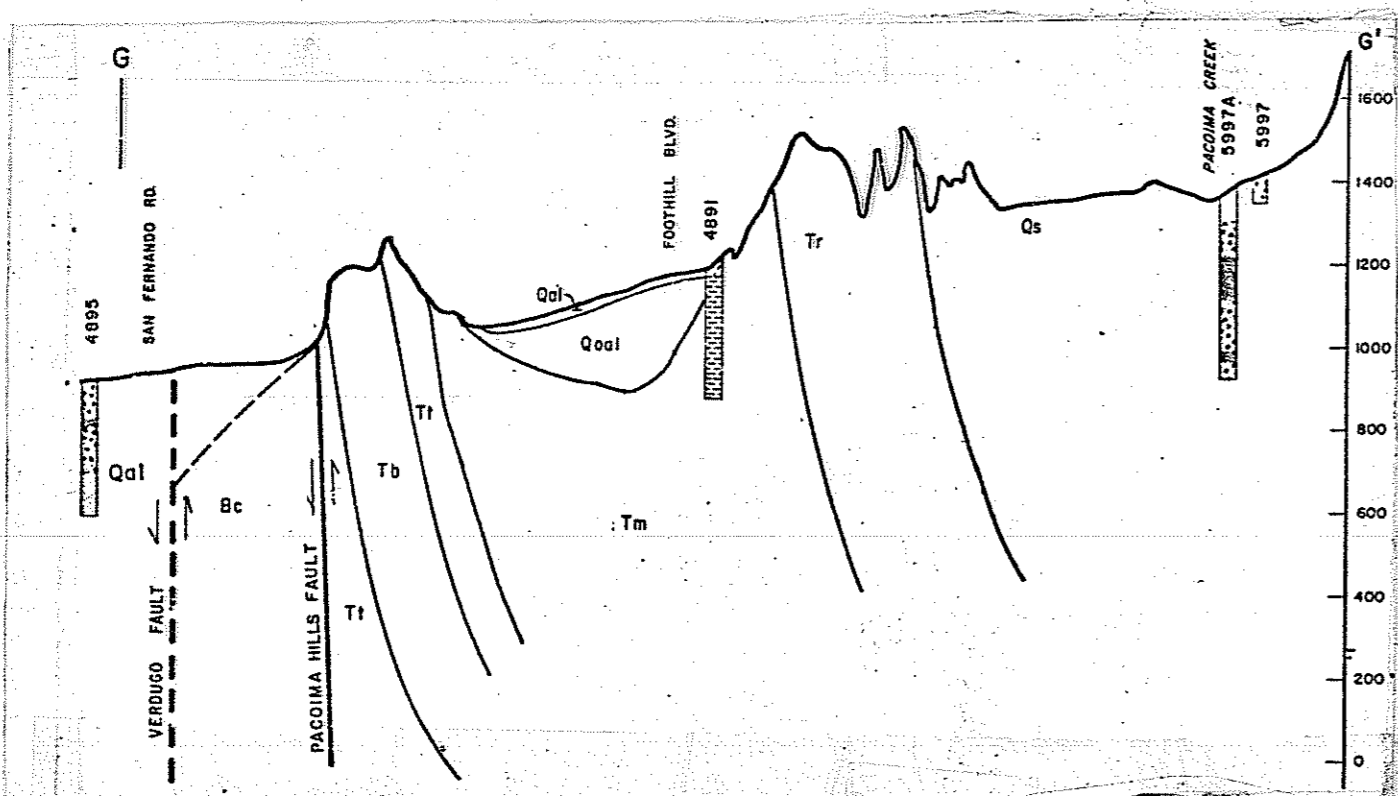
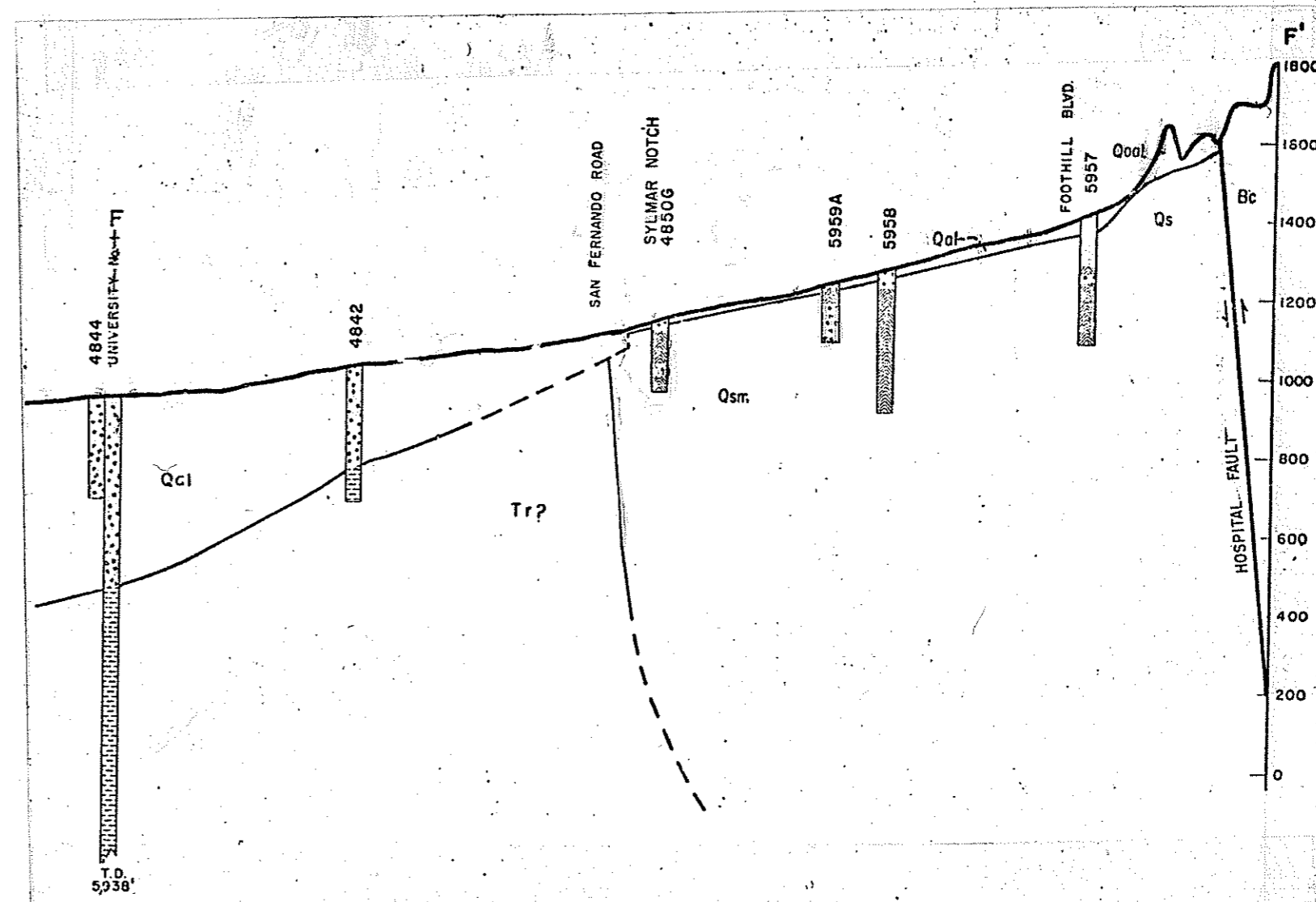
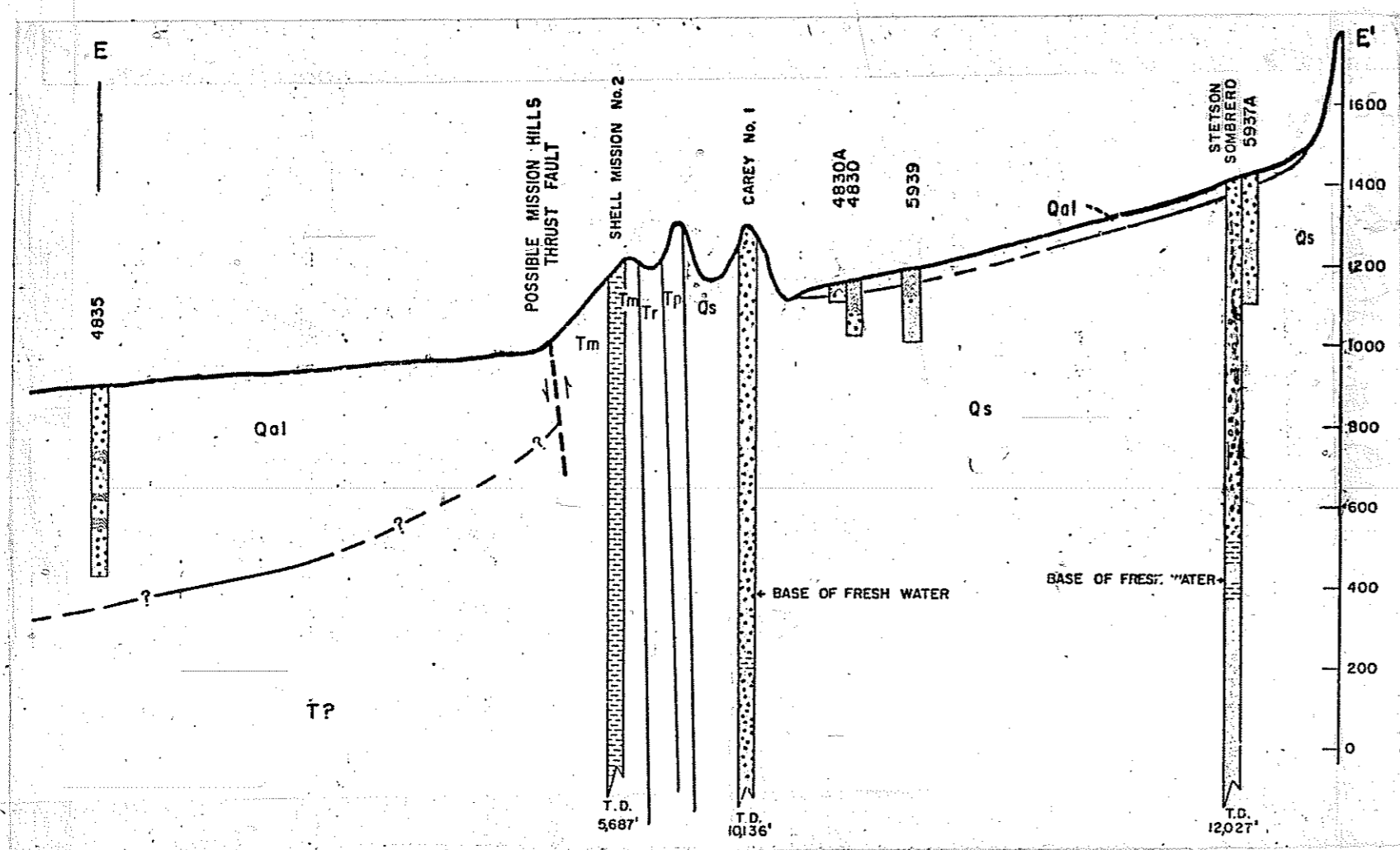
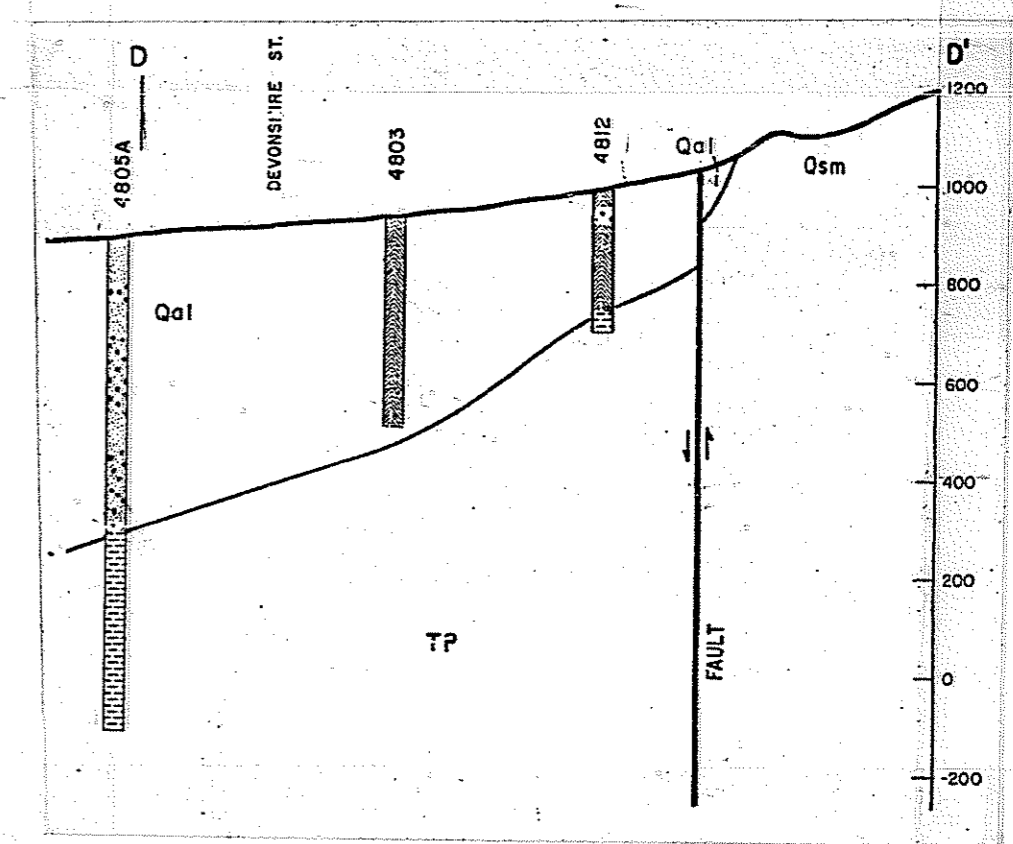
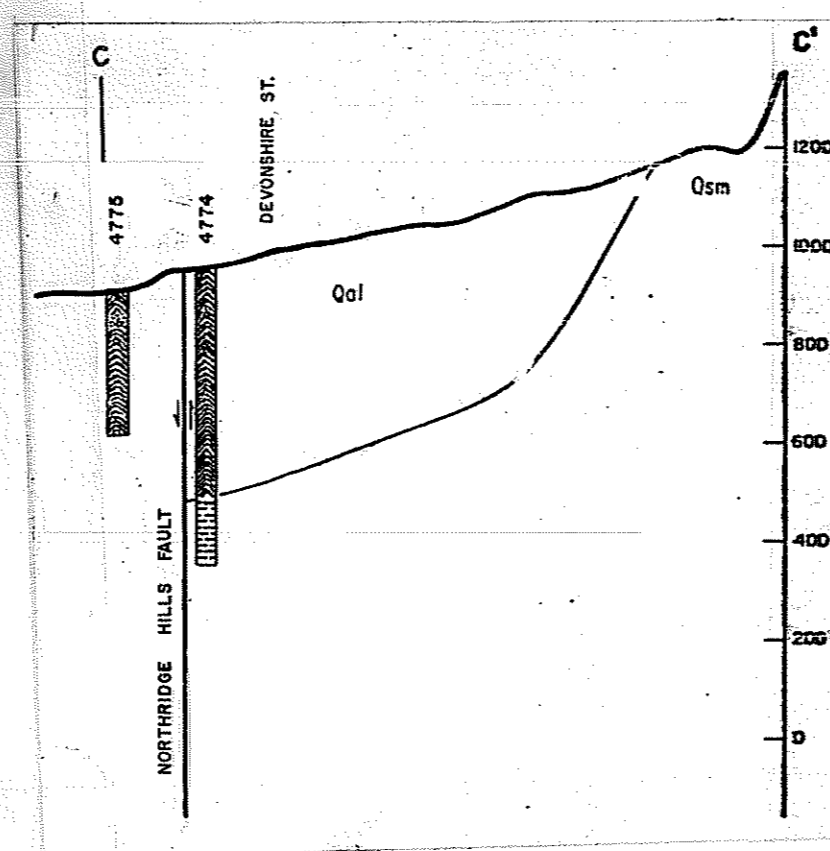
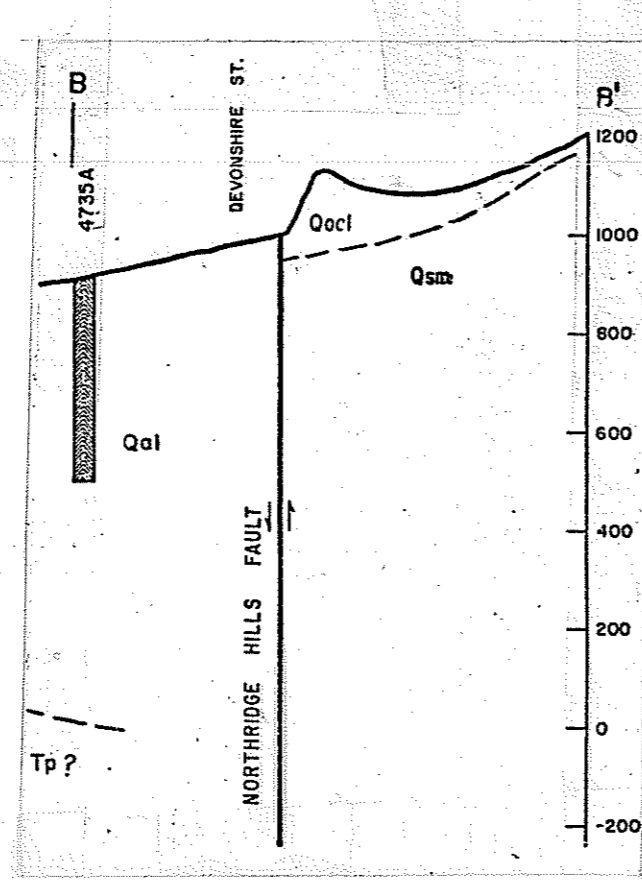
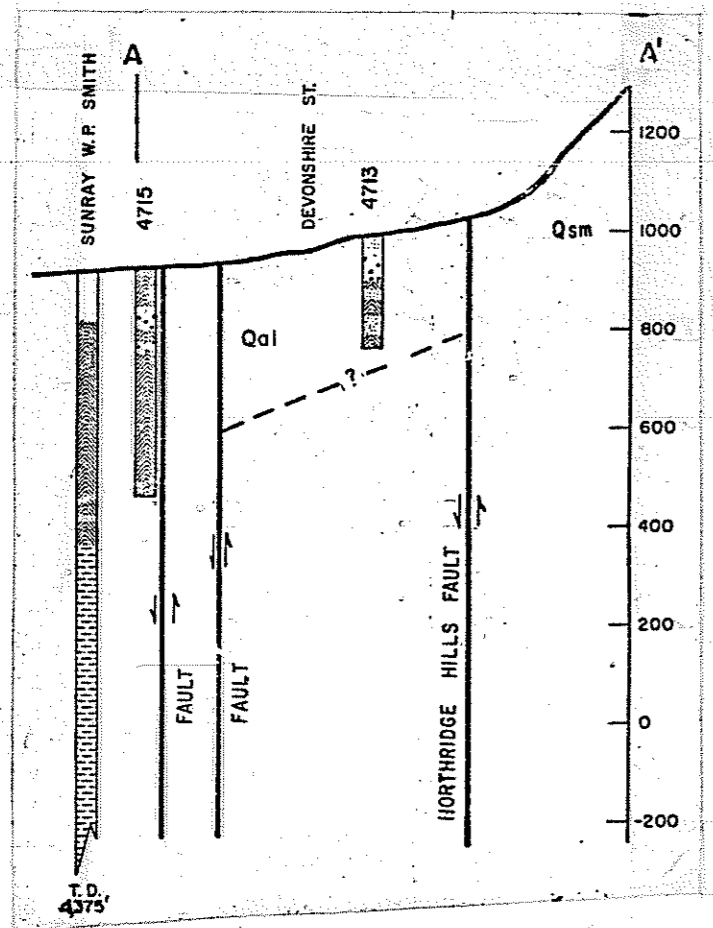


The preparation of this map was financed in part through a comprehensive planning grant from the Department of Housing and Urban Development, under provision of Section 701 of the Housing Act of 1954, as amended, April 1973, County of Los Angeles.



LEGEND

	CLAY
	SAND
	GRAVEL
	SAND AND GRAVEL
	SEDIMENTARY NONWATER-BEARING ROCKS
	Qcl RECENT ALLUVIUM
	Qol OLDER ALLUVIUM - TERRACE DEPOSITS
	Qsm SAUGUS FORMATION
	Qsm SAUGUS FORMATION - MARINE FACIES
	Tr PICO FORMATION
	Tr REPETTO FORMATION
	Tm MOJAVE (PUENTE) FORMATION
	T2 TORRANCE FORMATION
	T? UNDIFFERENTIATED TERTIARY
	Bc BASEMENT COMPLEX

SCALE: 1" = 1000'

GEOLOGIC CROSS SECTIONS

from California State Water Rights Board Referee's Report (1962, Plates 5A, B, C & F)

See Plate 4 for locations

The information on this map is based on interpretations of insufficient data, and is intended only for land-use planning. This map should be updated as better data become available. The information on this map should not be used for design, construction, or any purpose other than land-use planning.

**SEISMIC CONSIDERATIONS FOR LAND USE PLANNING
LOS ANGELES COUNTY**

Woodward-McNeill & Associates
2140 W. Olympic Blvd., Los Angeles, Calif. 90006
Drafting by Los Angeles County Engineer

proj. B116S
March 1973

PLATE 16

F.M. 21477-16