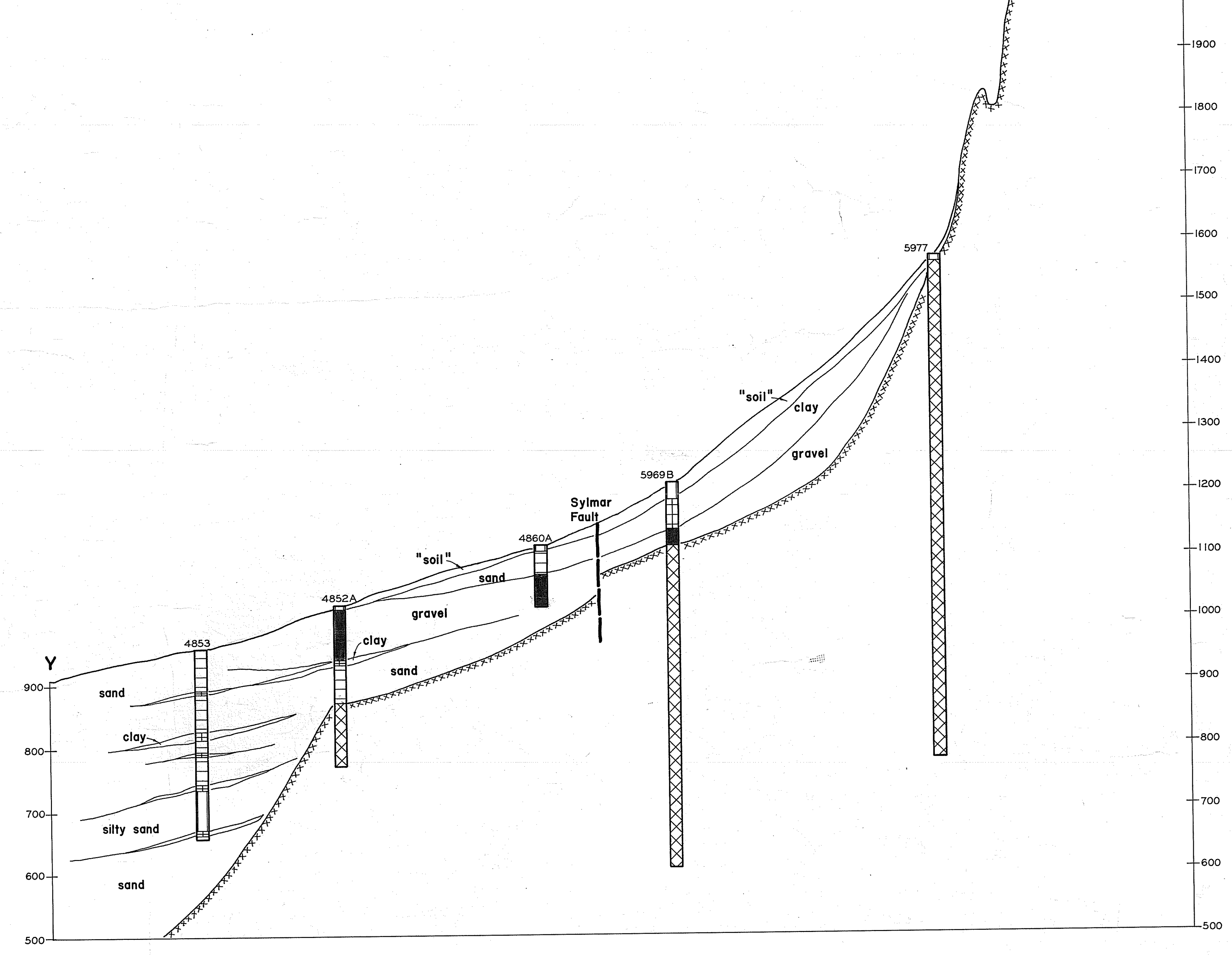
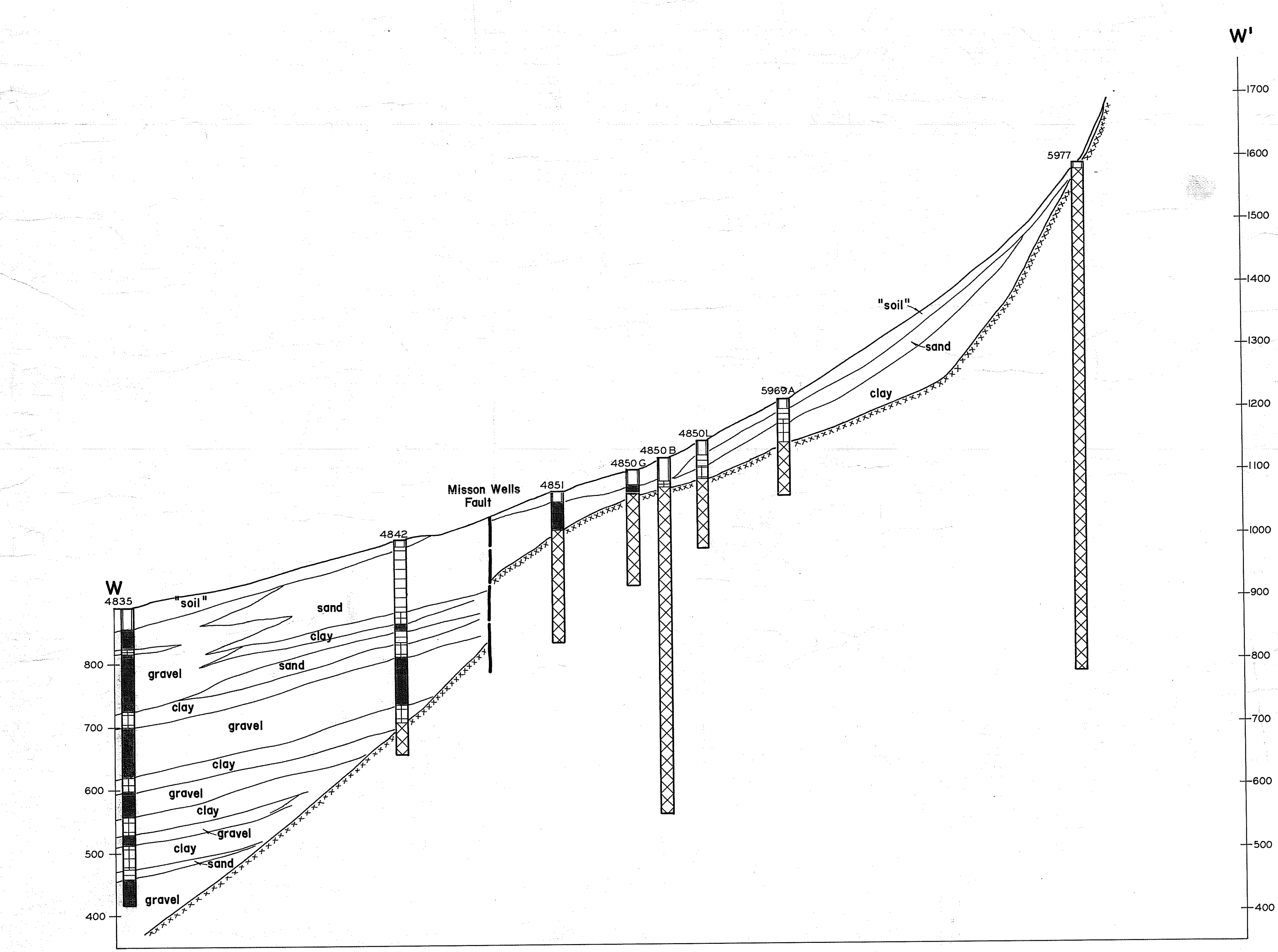
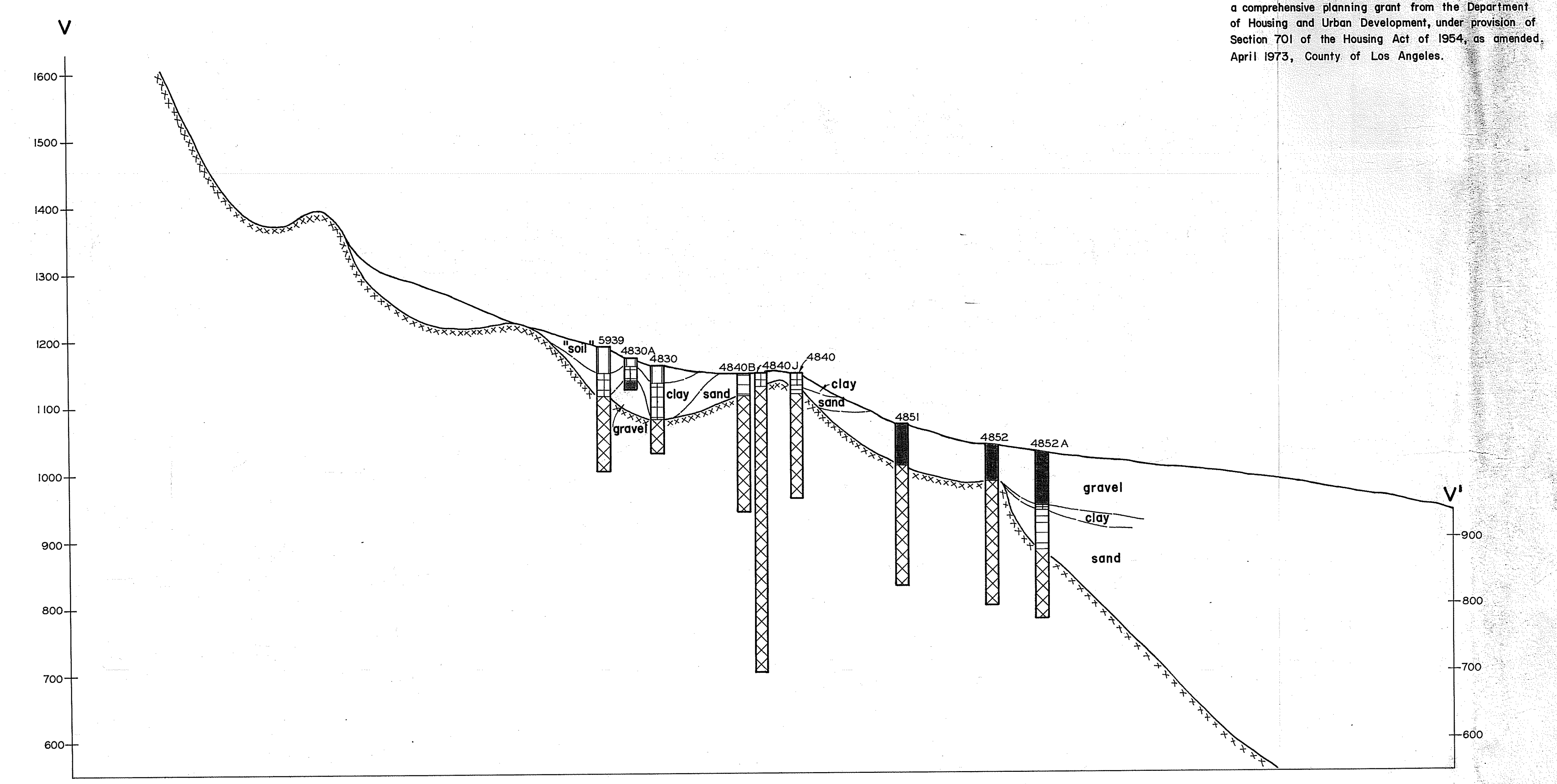
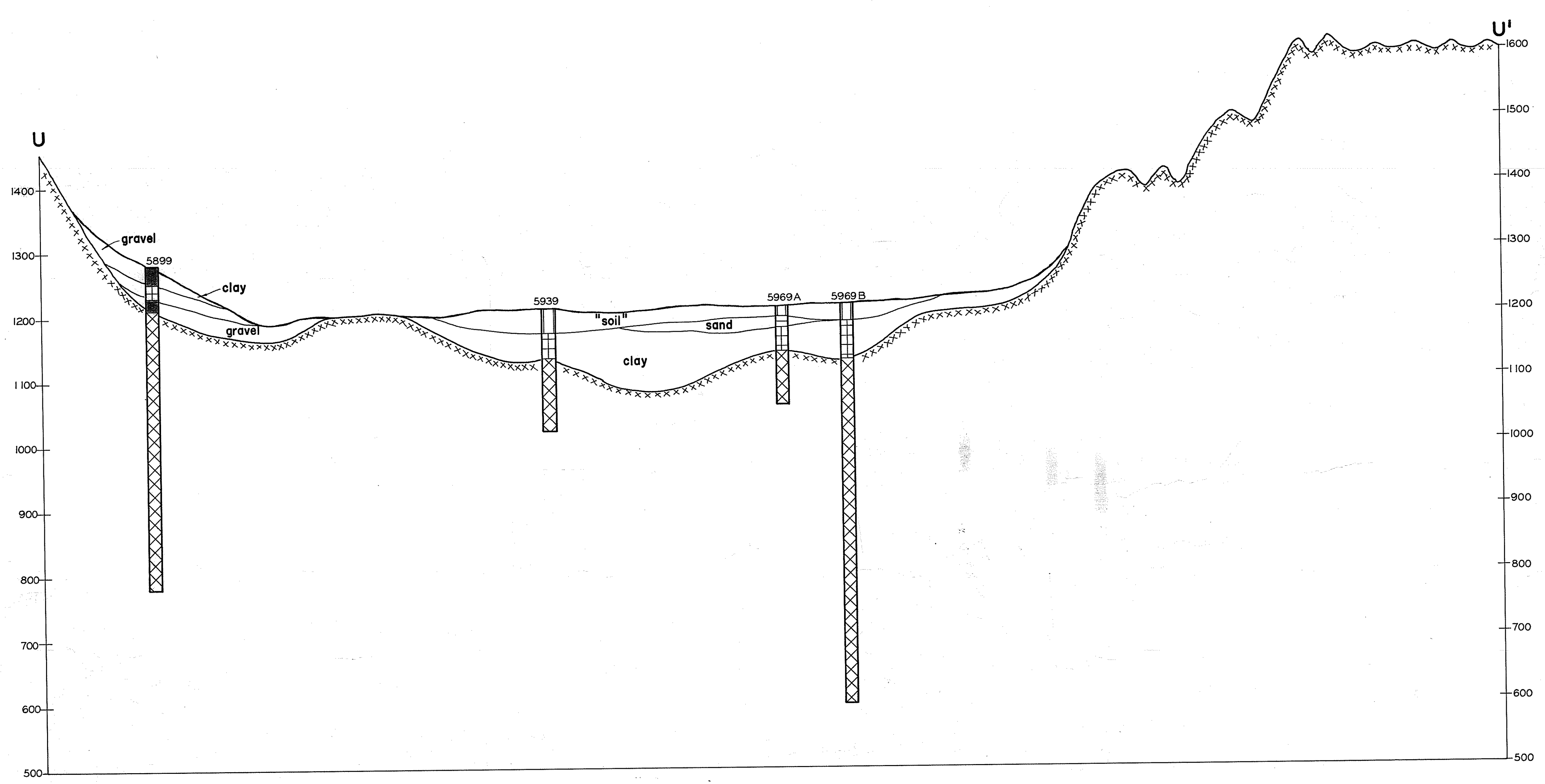


The preparation of this map was financed in part through a comprehensive planning grant from the Department of Housing and Urban Development, under provision of Section 701 of the Housing Act of 1954, as amended, April 1973, County of Los Angeles.



SOIL PROFILES U-U' V-V' W-W' & Y-Y'
See Plate 4 for location

- | | |
|--|--|
| | |
| | |
| | |

HORIZONTAL SCALE
1:24,000

1 MILE
1 KILOMETER

Elevation in feet above sea level

THE INFORMATION ON THIS MAP IS BASED ON INTERPRETATIONS OF INSUFFICIENT DATA AND IS INTENDED ONLY FOR LAND-USE PLANNING. THIS MAP SHOULD BE UPDATED AS BETTER DATA BECOME AVAILABLE. THE INFORMATION ON THIS MAP SHOULD NOT BE USED FOR DESIGN, CONSTRUCTION, OR ANY PURPOSE OTHER THAN LAND-USE PLANNING.

SEISMIC CONSIDERATIONS FOR LAND USE PLANNING
LOS ANGELES COUNTY

Woodward - McNeill & Associates
2140 W. Olympic Blvd., Los Angeles, Calif. 90006
Drafting by Los Angeles County Engineer

proj. B-1165
March 1973

PLATE 18