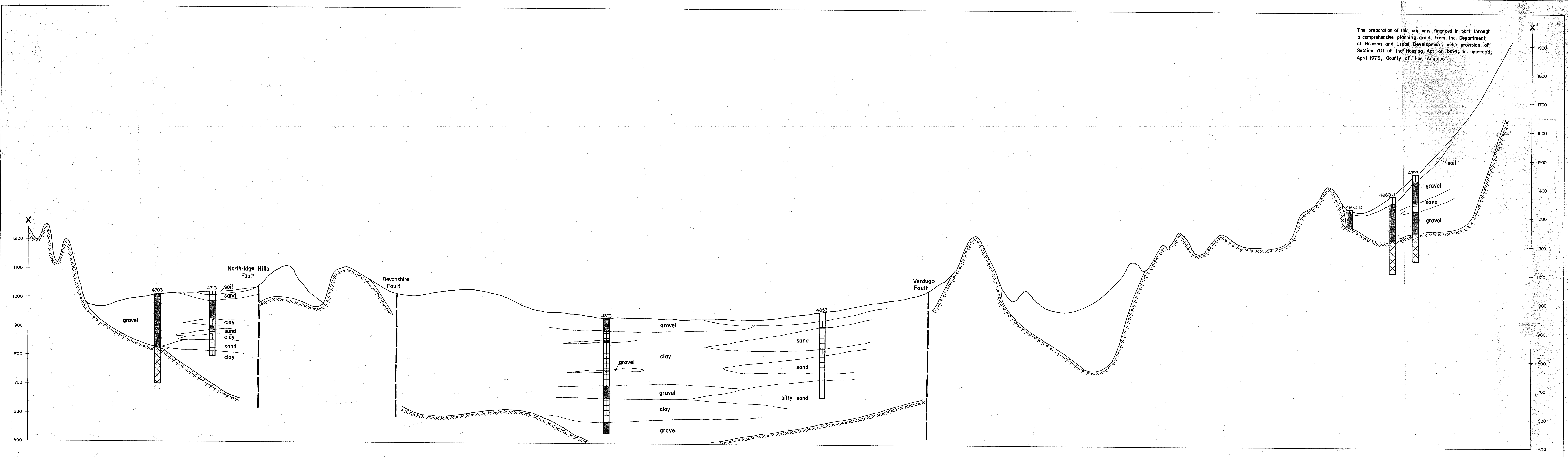
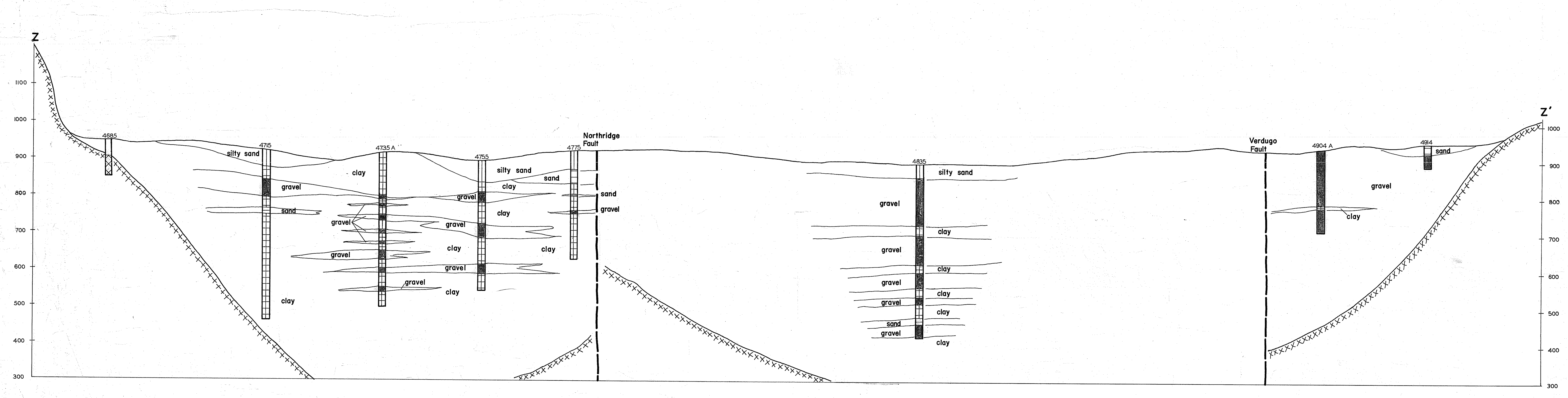


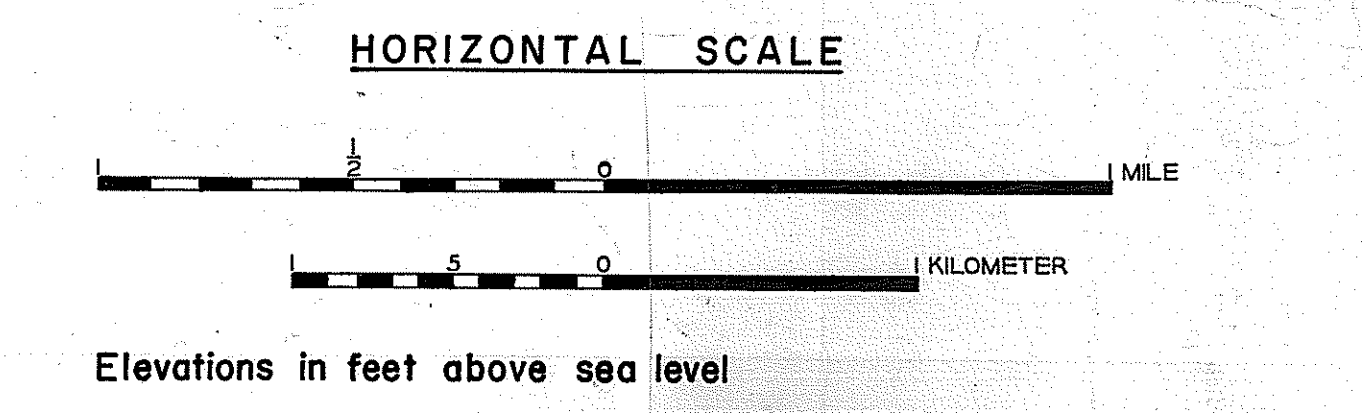
The preparation of this map was financed in part through a comprehensive planning grant from the Department of Housing and Urban Development, under provision of Section 701 of the Housing Act of 1954, as amended, April 1973, County of Los Angeles.



SOIL PROFILES X-X' & Z-Z'
See Plate 4 for location



- Gravel, boulder
- Sand, gravelly sand, clayey sand
- Silty sand
- Sandy silt, "soil" silty sand
- Clay, silty clay, sandy clay
- Probable bedrock, including Saugus Formation
- Incomplete data



The information on this map is based on interpretations of insufficient data, and is intended only for land-use planning. This map should be updated as better data become available. The information on this map should not be used for design, construction, or any purpose other than land-use planning.

**SEISMIC CONSIDERATIONS FOR LAND USE PLANNING
LOS ANGELES COUNTY**

Woodward - McNeill & Associates
2140 W. Olympic Blvd., Los Angeles, Calif. 90006
Drafting by Los Angeles County Engineer

proj. B163
March 1973