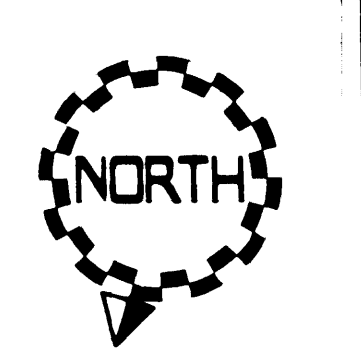


F.M. 21483-1



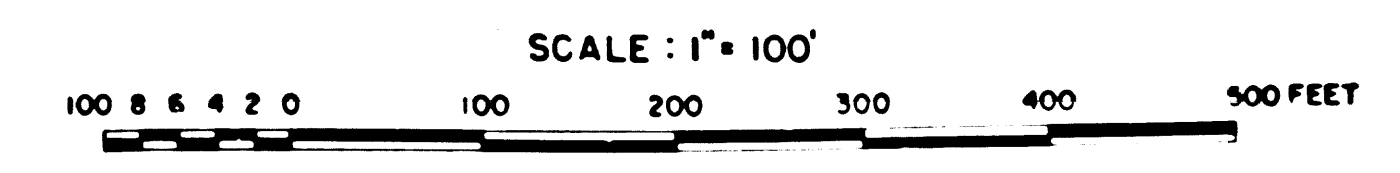
LEGEND

⊙	SURVEY CONTROL POINTS
○	MONUMENTS SET OR FOUND, ALSO B.C.'S AND E.C.'S
△	ANGLE POINTS
◇	SECTION CORNERS
M	GROUND DISTANCE MEASURED
C	CALCULATED VALUE
A	ADJUSTED DISTANCE
R	RECORDED VALUE AS ESTABLISHED PREVIOUSLY

- NOTE:
- BEARINGS ARE BASED ON THE CALIFORNIA COORDINATE SYSTEM, DIVISION 8, SECTION 8009 OF THE 1953 PUBLIC RESOURCES CODE.
  - DEPT. OF TRANSPORTATION SURVEY INFORMATION IS AVAILABLE FROM THE ENGINEERING SERVICES BRANCH, LOS ANGELES, CALIFORNIA.
  - DEPT. OF TRANSPORTATION RIGHT OF WAY INFORMATION IS AVAILABLE FROM THE RIGHT OF WAY BRANCH, LOS ANGELES, CALIFORNIA.
  - STATIONING SHOWN ON THIS MAP IS FOR REFERENCE ONLY.

IN LOS ANGELES COUNTY  
BLK 1607

CONSTRUCTION CONTRACT NO. 07 - 100524  
COMPLETION DATE: MARCH 1974



LOS ANGELES COUNTY FILE NO.

DISTRICT	COUNTY	ROUTE	POST MILES - TOTAL PROJECT	SHEET NO.	TOTAL SHEETS	DATE	BY
07	LA	101	311.34 B	1	5		P. NELSON

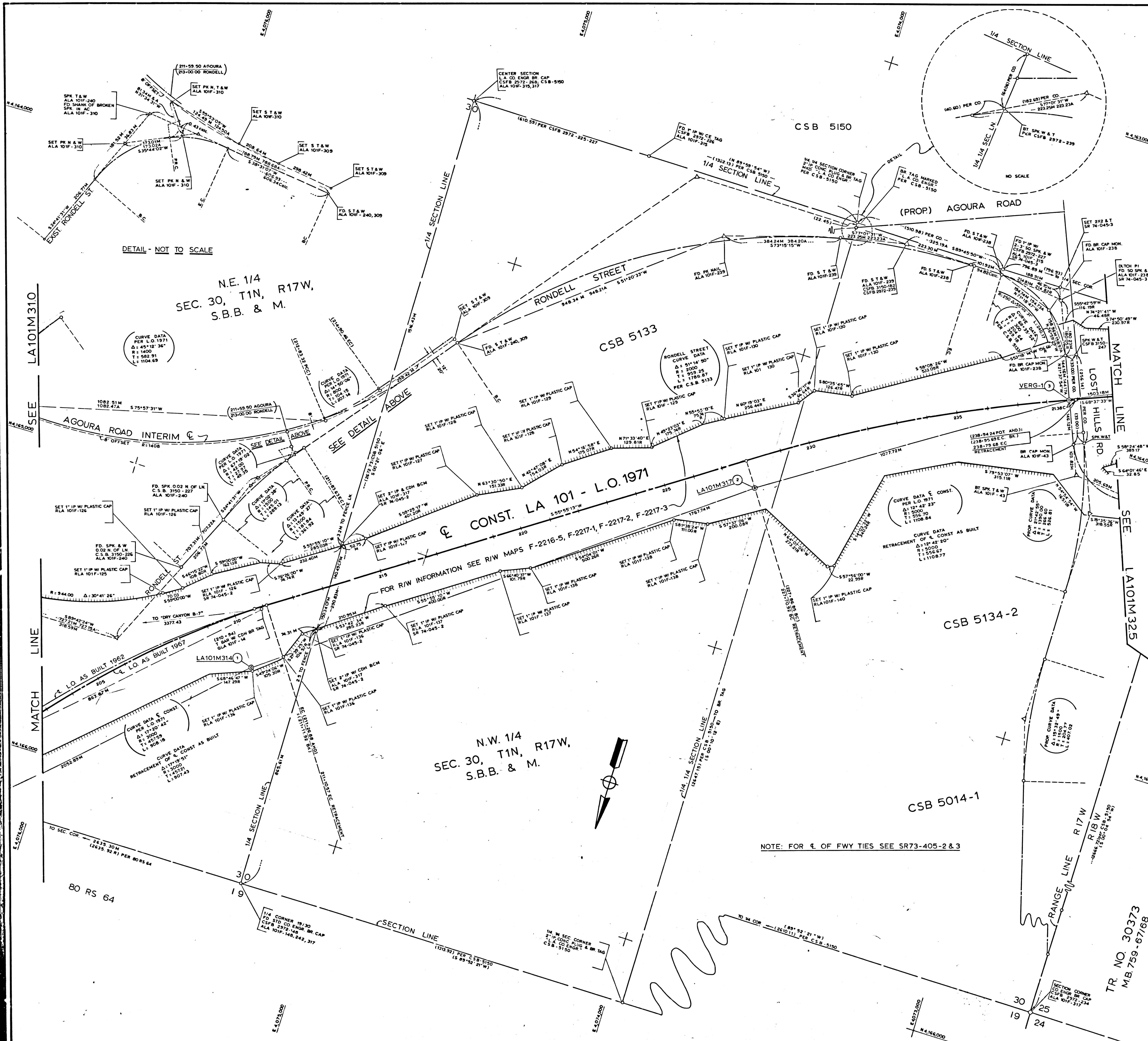
STATE OF CALIFORNIA	DEPT. OF TRANSPORTATION	DATE	BY
MONUMENTATION MAP	MAP NO. LA 101M310		

NAME	DESIGNED BY	DRAWN BY	CHECKED BY
J. MUSSENDOEN	J. MUSSENDOEN	F. KOVAL	D. EBERLY

NOTE: FOR CL OF FWY TIES SEE SR73-405-2

F.M. 21483-1



NO	NAME	DESCRIPTION	REFERENCE	COORDINATES
1	LA101M314	SET BRASS CAP MON	SR73-405-2, 12	
2	LA101M317	SET BRASS CAP MON	SR73-405-3, 12	
3	VERG-1	FD L & T	SR73-405-3, 13	

F.M. 21483-2

**LEGEND**

- ⊙ — SURVEY CONTROL POINTS
- — MONUMENTS SET OR FOUND, ALSO B.C.'S AND E.C.'S
- △ — ANGLE POINTS
- ◇ — SECTION CORNERS
- M — GROUND DISTANCE MEASURED
- C — CALCULATED VALUE
- CFM — CALCULATED FROM MEASURE
- A — ADJUSTED DISTANCE
- R — RECORDED VALUE AS ESTABLISHED PREVIOUSLY

**NOTE:**

- BEARINGS ARE BASED ON THE CALIFORNIA COORDINATE SYSTEM, DIVISION 8, SECTION 8809 OF THE 1953 PUBLIC RESOURCES CODE.
- DEPT OF TRANSPORTATION SURVEY INFORMATION IS AVAILABLE FROM THE ENGINEERING SERVICES BRANCH, LOS ANGELES, CALIFORNIA
- DEPT OF TRANSPORTATION RIGHT OF WAY INFORMATION IS AVAILABLE FROM THE RIGHT OF WAY BRANCH, LOS ANGELES, CALIFORNIA.
- STATIONING SHOWN ON THIS MAP IS FOR REFERENCE ONLY

**IN LOS ANGELES COUNTY**  
BLK. 1607

CONSTRUCTION CONTRACT NO. 07 - 100524  
COMPLETION DATE: MARCH 1974

SCALE: 1" = 100'

100 200 300 400 500 FEET

**LOS ANGELES COUNTY FILE NO.**

DISTRICT	COUNTY	ROUTE	POST MILES - TOTAL PROJECT	REPLY SHEETS	NO. SHEETS	Date of Party
07	LA	101	311 - 348	2	6	P. NELSON

STATE OF CALIFORNIA DEPT OF TRANSPORTATION

**MONUMENTATION MAP**

DATUM: CALIFORNIA COORDINATE SYSTEM - ZONE 7

MAP NO. LA 101M 32

Survey Office Supervisor: D. EBERLY

Senior Engineer, Surveys: [Signature]

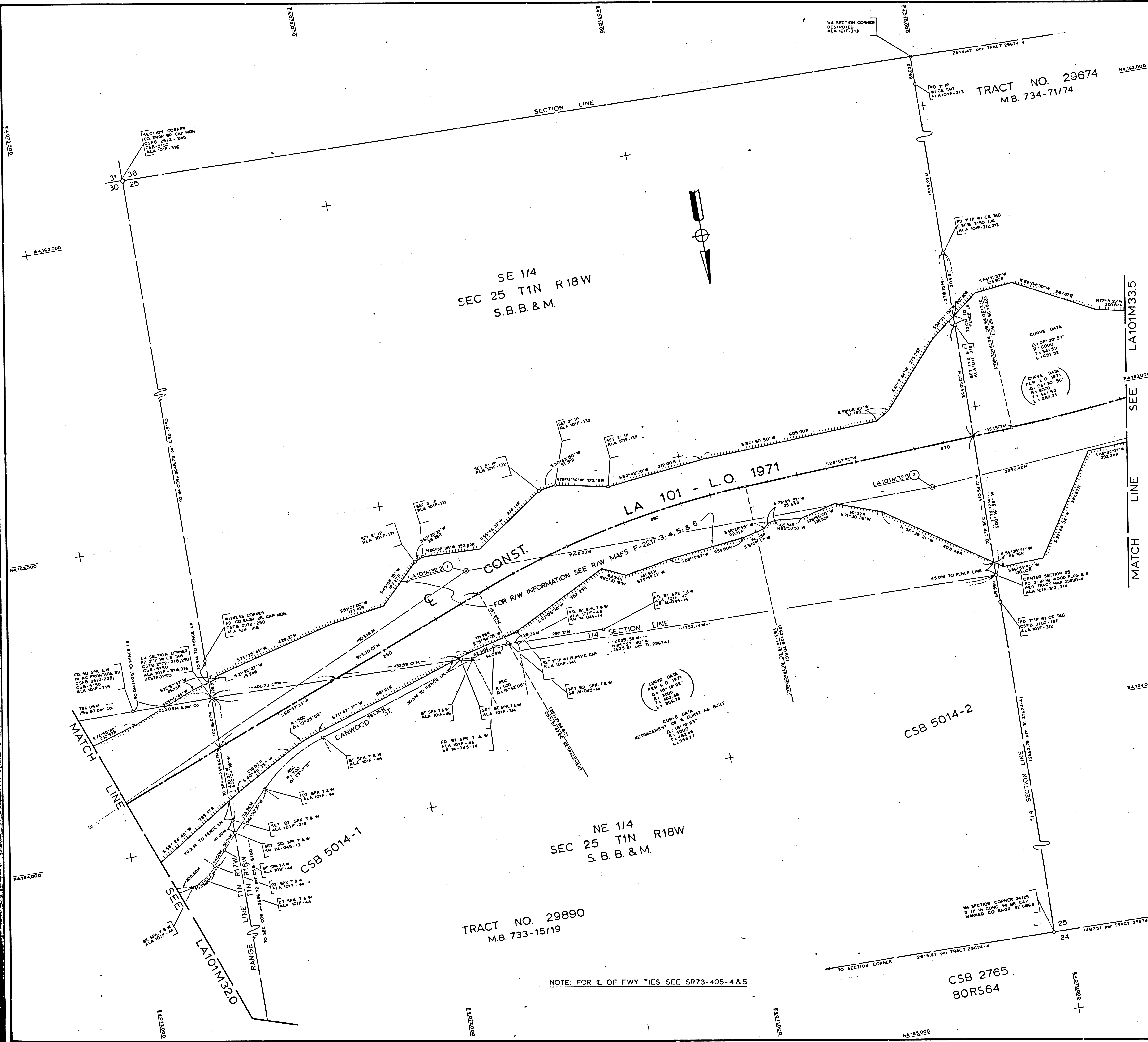
Checked by: J. MUSENDEN

Drawn by: F. KOVAL

DATE: AUGUST 1974

F.M. 21483-2

NO	NAME	DESCRIPTION	REFERENCE	COORDINATES
1	LA101M322	SET BRASS CAP MON	SR73-405-4, 13	
2	LA101M325	SET BRASS CAP MON	SR73-405-5, 13	



F.M. 21483-3

**LEGEND**

- ⊙ — SURVEY CONTROL POINTS
- — MONUMENTS SET OR FOUND, ALSO B.C.'S AND E.C.'S
- △ — ANGLE POINTS
- ◇ — SECTION CORNERS
- M — GROUND DISTANCE MEASURED
- CFM — CALCULATED FROM MEASURE
- CFR — CALCULATED FROM RECORD
- A — ADJUSTED DISTANCE
- R — RECORDED VALUE AS ESTABLISHED PREVIOUSLY
- C — CALCULATED VALUE

**NOTE:**

- BEARINGS ARE BASED ON THE CALIFORNIA COORDINATE SYSTEM, DIVISION 8, SECTION 8809 OF THE 1953 PUBLIC RESOURCES CODE.
- DEPT. OF TRANSPORTATION SURVEY INFORMATION IS AVAILABLE FROM THE ENGINEERING SERVICES BRANCH, LOS ANGELES, CALIFORNIA.
- DEPT. OF TRANSPORTATION RIGHT OF WAY INFORMATION IS AVAILABLE FROM THE RIGHT OF WAY BRANCH, LOS ANGELES, CALIFORNIA.
- STATIONING SHOWN ON THIS MAP IS FOR REFERENCE ONLY.

**IN LOS ANGELES COUNTY**  
BLK. 1607

CONSTRUCTION CONTRACT NO. 07 - 100524  
COMPLETION DATE: MARCH 1974

SCALE: 1" = 100'  
100 200 300 400 500 FEET

**LOS ANGELES COUNTY FILE NO.**

DISTRICT	COUNTY	ROUTE	POST MILES - TOTAL PROJECT	SHEET TOTAL	NO. SHEETS	DATE
07	LA	101	31.1 - 34.8	3	3	8/78

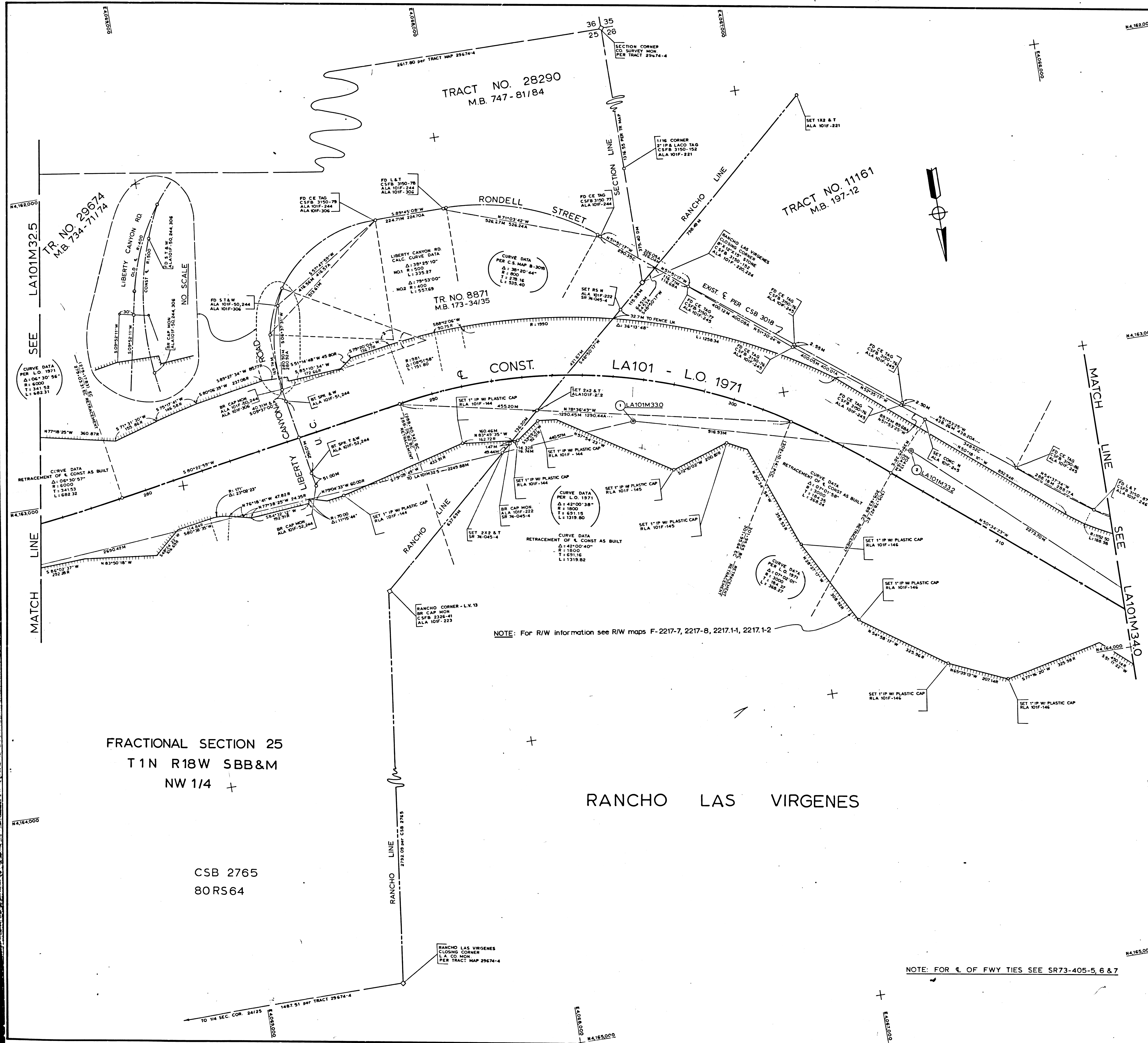
STATE OF CALIFORNIA DEPT. OF TRANSPORTATION

**MONUMENTATION MAP**  
DATUM: CALIFORNIA COORDINATE SYSTEM - ZONE 7  
MAP NO. LA 101M325

Checked by: P. NELSON  
Drawn by: W. RUSH  
Project Engineer: J. MUSSENDOEN  
Survey Officer: D. E. EMERY  
SENIOR SURVEYOR: J. MUSSENDOEN  
DATE: AUGUST 1978

FM 21483-3

NOTE: FOR CL OF FWY TIES SEE SR73-405-4 & 5



FRACTIONAL SECTION 25  
T1N R18W SBB&M  
NW 1/4

CSB 2765  
8ORS64

RANCHO LAS VIRGENES

NO	NAME	DESCRIPTION	REFERENCE	COORDINATES
1	LA101M330	SET BRASS CAP MON	SR73-405-14	
2	LA101M332	SET BRASS CAP MON	SR73-405-14	

F.M. 21483-4

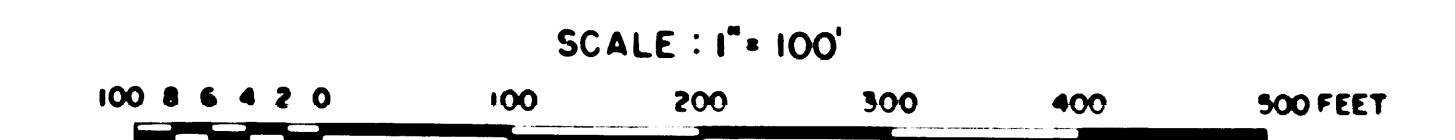
LEGEND

⊙	SURVEY CONTROL POINTS
○	MONUMENTS SET OR FOUND, ALSO B.C.'S AND E.C.'S
∠	ANGLE POINTS
◇	SECTION CORNERS
—	GROUND DISTANCE MEASURED
CFM	CALCULATED FROM MEASURED
C	CALCULATED VALUE
A	ADJUSTED DISTANCE
R	RECORDED VALUE AS ESTABLISHED PREVIOUSLY

NOTE:  
 1. BEARINGS ARE BASED ON THE CALIFORNIA COORDINATE SYSTEM, DIVISION 8, SECTION 8009 OF THE 1953 PUBLIC RESOURCES CODE.  
 REFERENCE  
 2. DEPT. OF TRANSPORTATION SURVEY INFORMATION IS AVAILABLE FROM THE ENGINEERING SERVICES BRANCH, LOS ANGELES, CALIFORNIA.  
 3. DEPT. OF TRANSPORTATION RIGHT OF WAY INFORMATION IS AVAILABLE FROM THE RIGHT OF WAY BRANCH, LOS ANGELES, CALIFORNIA.  
 4. STATIONING SHOWN ON THIS MAP IS FOR REFERENCE ONLY.

IN LOS ANGELES COUNTY  
BLK 1606

CONSTRUCTION CONTRACT NO. 07-100524  
COMPLETION DATE: MARCH 1974



LOS ANGELES COUNTY FILE NO.

DISTRICT	COUNTY	ROUTE	POST MILES - TOTAL PROJECT	SHEET TOTAL	NO. SHEETS	DATE OF PART
07	LA	101	31.1 - 34.8	4	6	P. NELSON

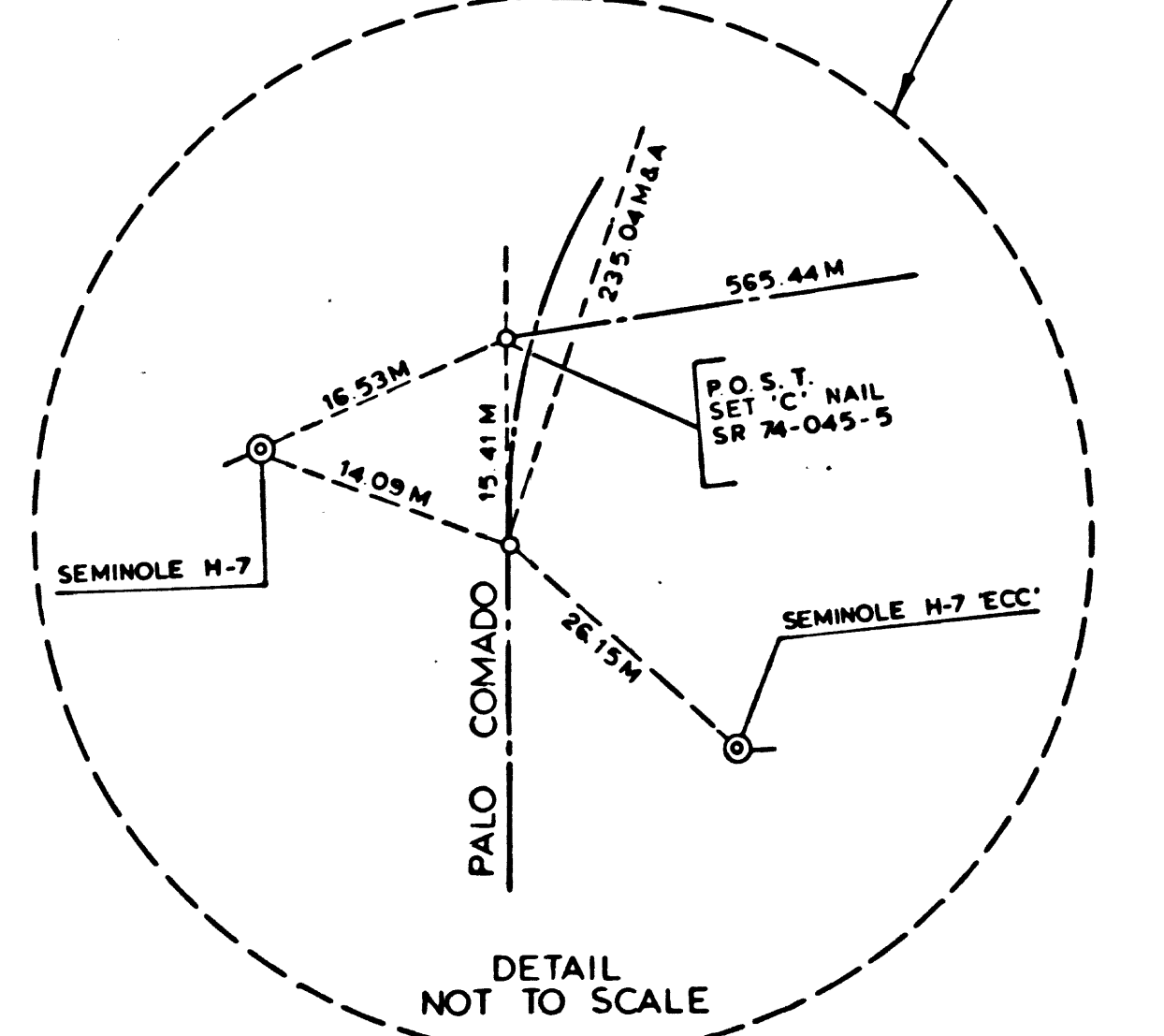
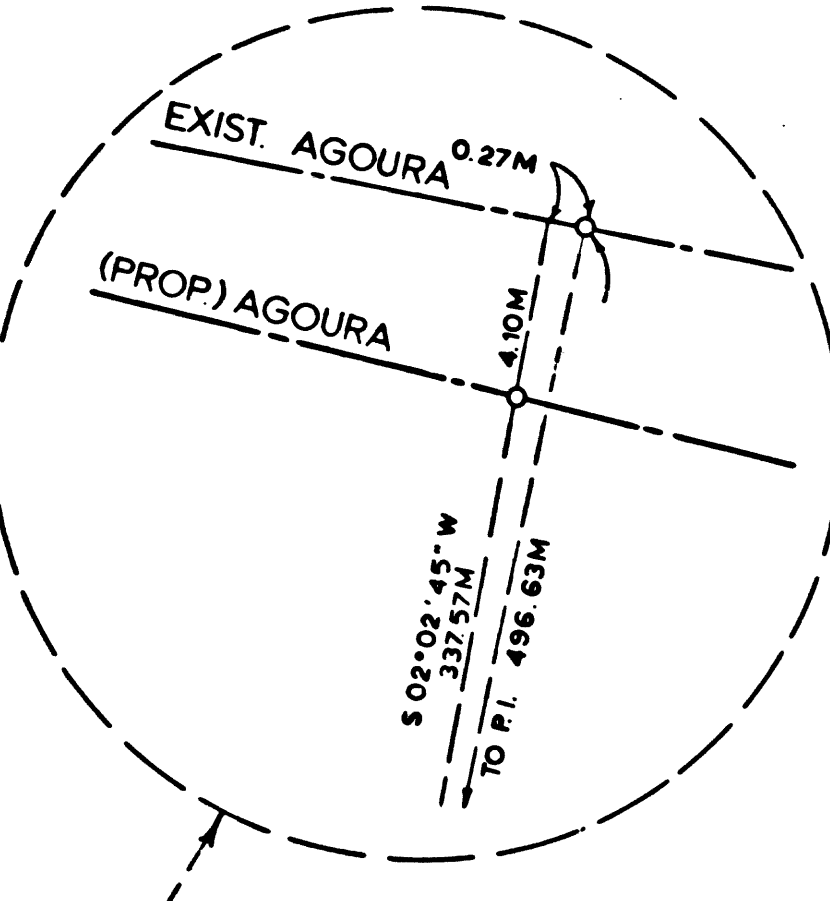
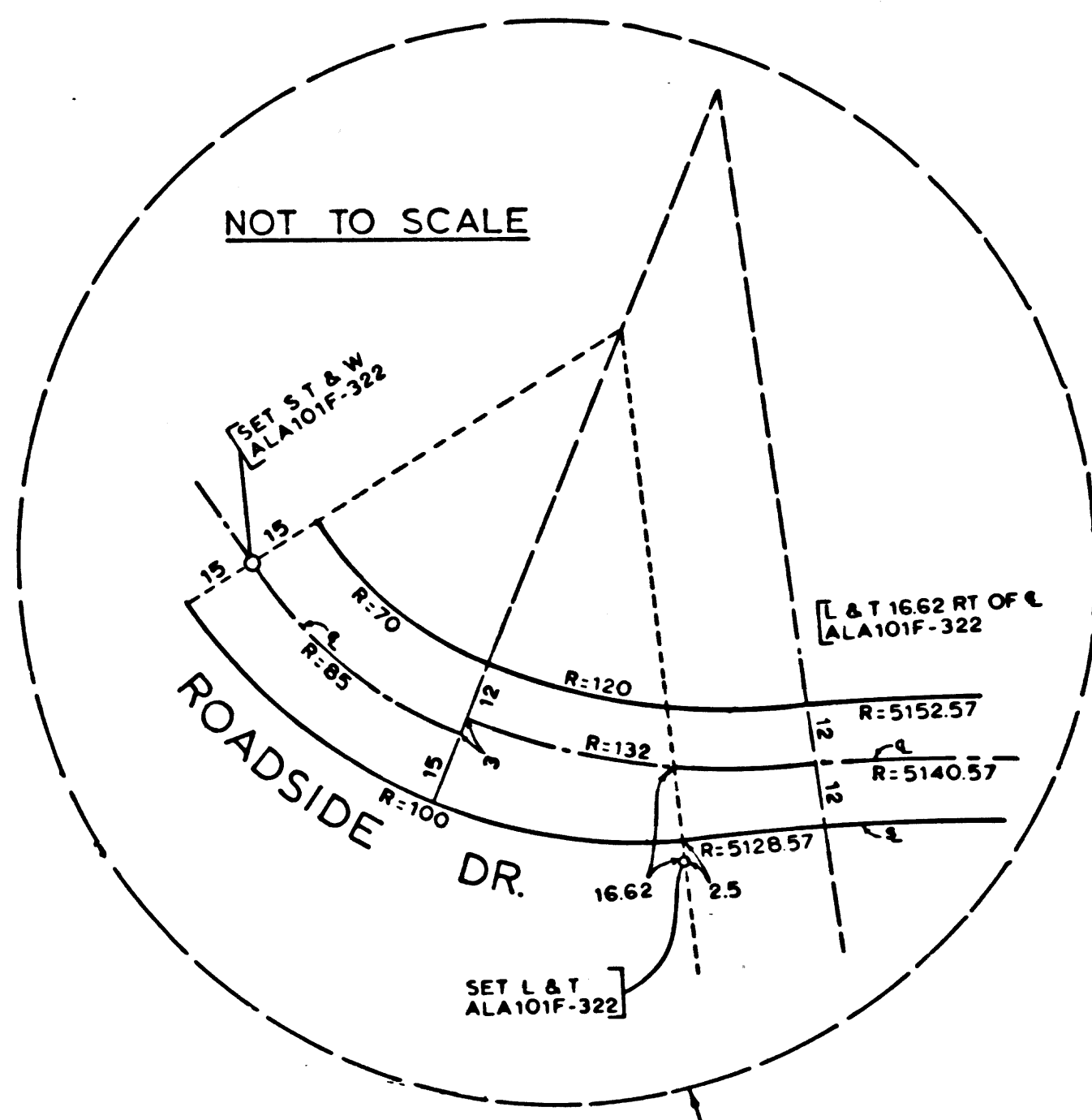
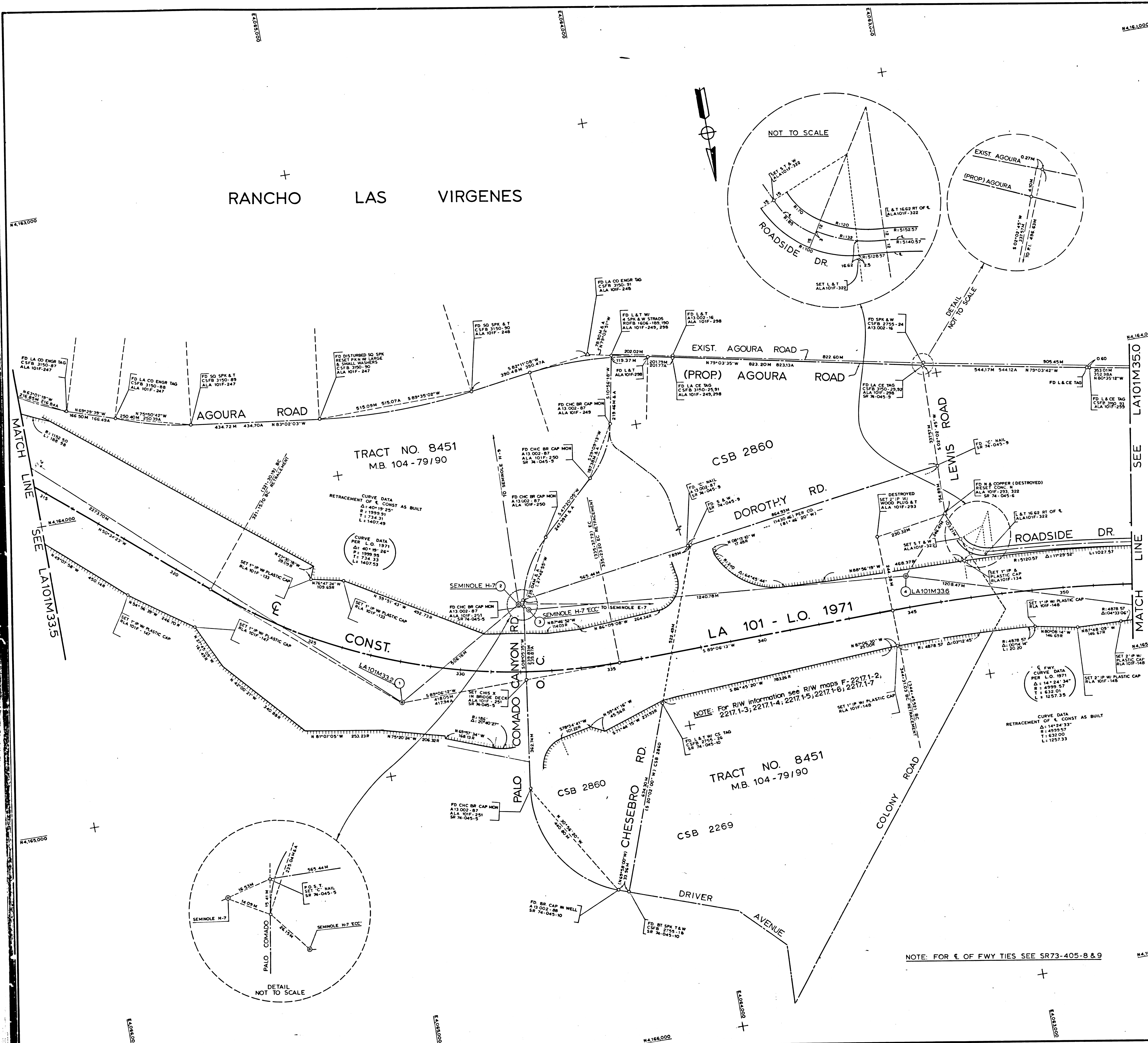
STATE OF CALIFORNIA DEPT. OF TRANSPORTATION  
 MONUMENTATION MAP  
 DATUM: CALIFORNIA COORDINATE SYSTEM - ZONE 7  
 MAP NO. LA 101M 335

Checked by: W. RISH, J. M. J. LAGUNA, J. M. MUSENDEN  
 Project Engineer: J. M. MUSENDEN, Directed by: F. KOVAL  
 Survey Office Supervisor: D. EBERLY  
 Surveyed by: J. M. MUSENDEN  
 A. E. VAN SWAN, P.C. & ASSOCIATES  
 DATE: AUGUST 1973

NOTE: FOR  $\epsilon$  OF FWY TIES SEE SR73-405-5, 6 & 7

FM 21483-4

NO	NAME	DESCRIPTION	REFERENCE	COORDINATES
1	LA101M336	FD 2x2 & T, RESET BR CAP MOM	SR73-405-B-15 ALA101F-210	
2	SEMINOLE	FD LA COUNTY SURV MON LA CO TRAM. STA. 1382	SR73-405-15	
3	SEM-N-7ECC	SET S T & W	SR73-405-15	
4	LA101M336	SET L & T	SR73-405-15	



F.M. 21483-5

LEGEND

- SURVEY CONTROL POINTS
- MONUMENTS SET OR FOUND, ALSO B.C.'S AND E.C.'S
- △ ANGLE POINTS
- ◇ SECTION CORNERS
- M GROUND DISTANCE MEASURED
- C CALCULATED VALUE
- CFM CALCULATED FROM MEASURE
- A ADJUSTED DISTANCE
- R RECORDED VALUE AS ESTABLISHED PREVIOUSLY

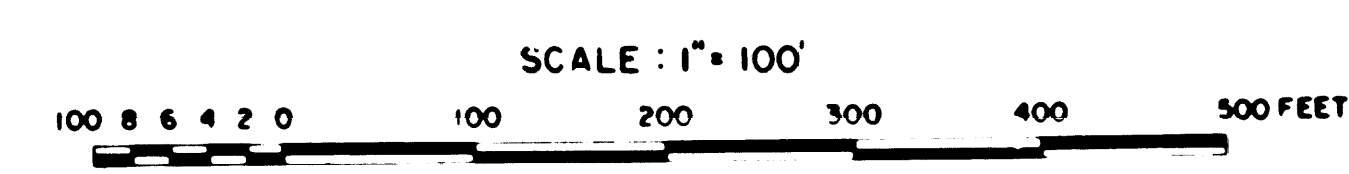
NOTE: 1. BEARINGS ARE BASED ON THE CALIFORNIA COORDINATE SYSTEM, DIVISION 8, SECTION 8809 OF THE 1953 PUBLIC RESOURCES CODE.

REFERENCE:

- DEPT OF TRANSPORTATION SURVEY INFORMATION IS AVAILABLE FROM THE ENGINEERING SERVICES BRANCH, LOS ANGELES, CALIFORNIA
- DEPT OF TRANSPORTATION RIGHT OF WAY INFORMATION IS AVAILABLE FROM THE RIGHT OF WAY BRANCH, LOS ANGELES, CALIFORNIA
- STATIONING SHOWN ON THIS MAP IS FOR REFERENCE ONLY

IN LOS ANGELES COUNTY  
BLK. 1606

CONSTRUCTION CONTRACT NO. 07-100524  
COMPLETION DATE: MARCH 1974



LOS ANGELES COUNTY FILE NO.

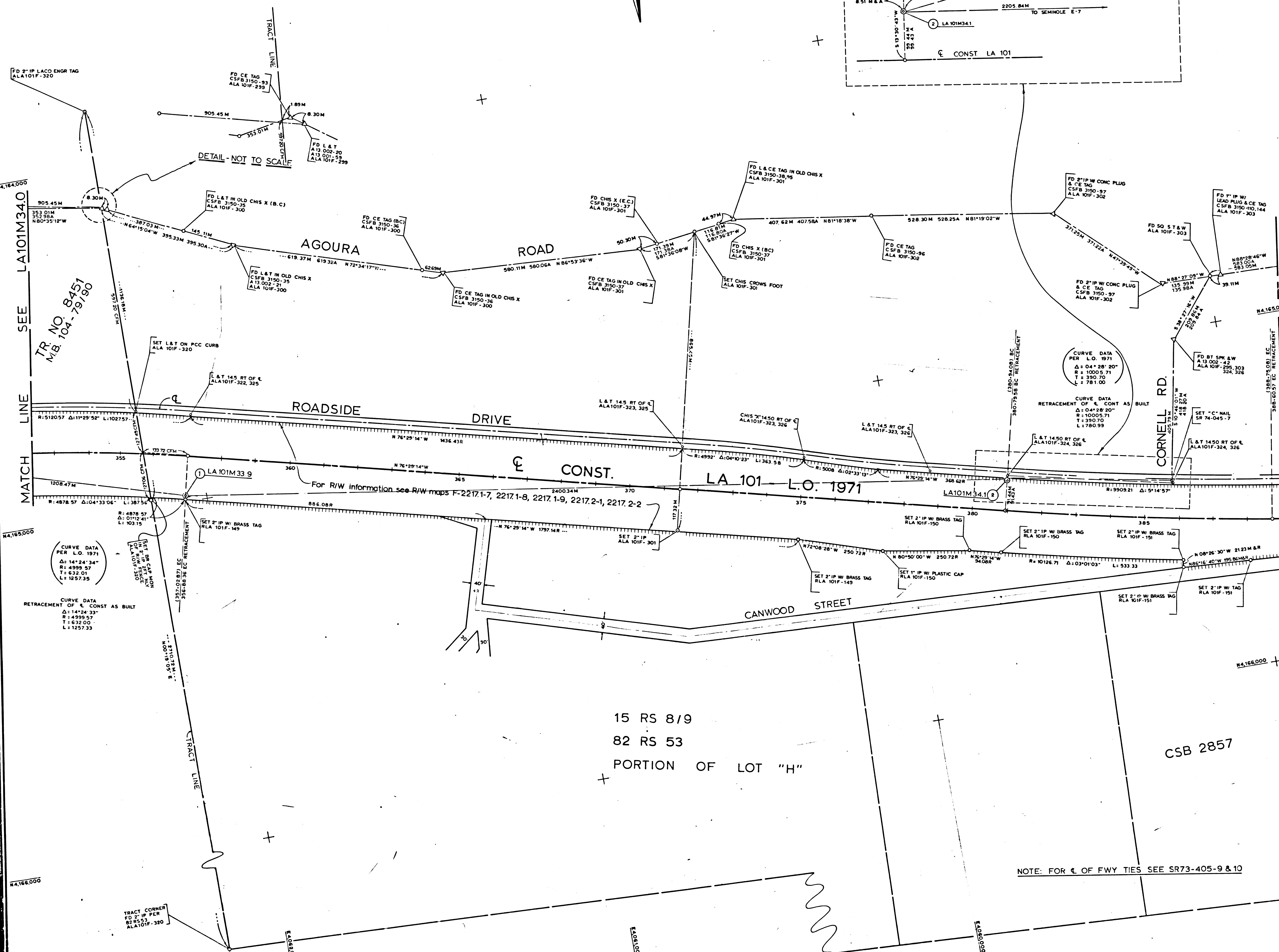
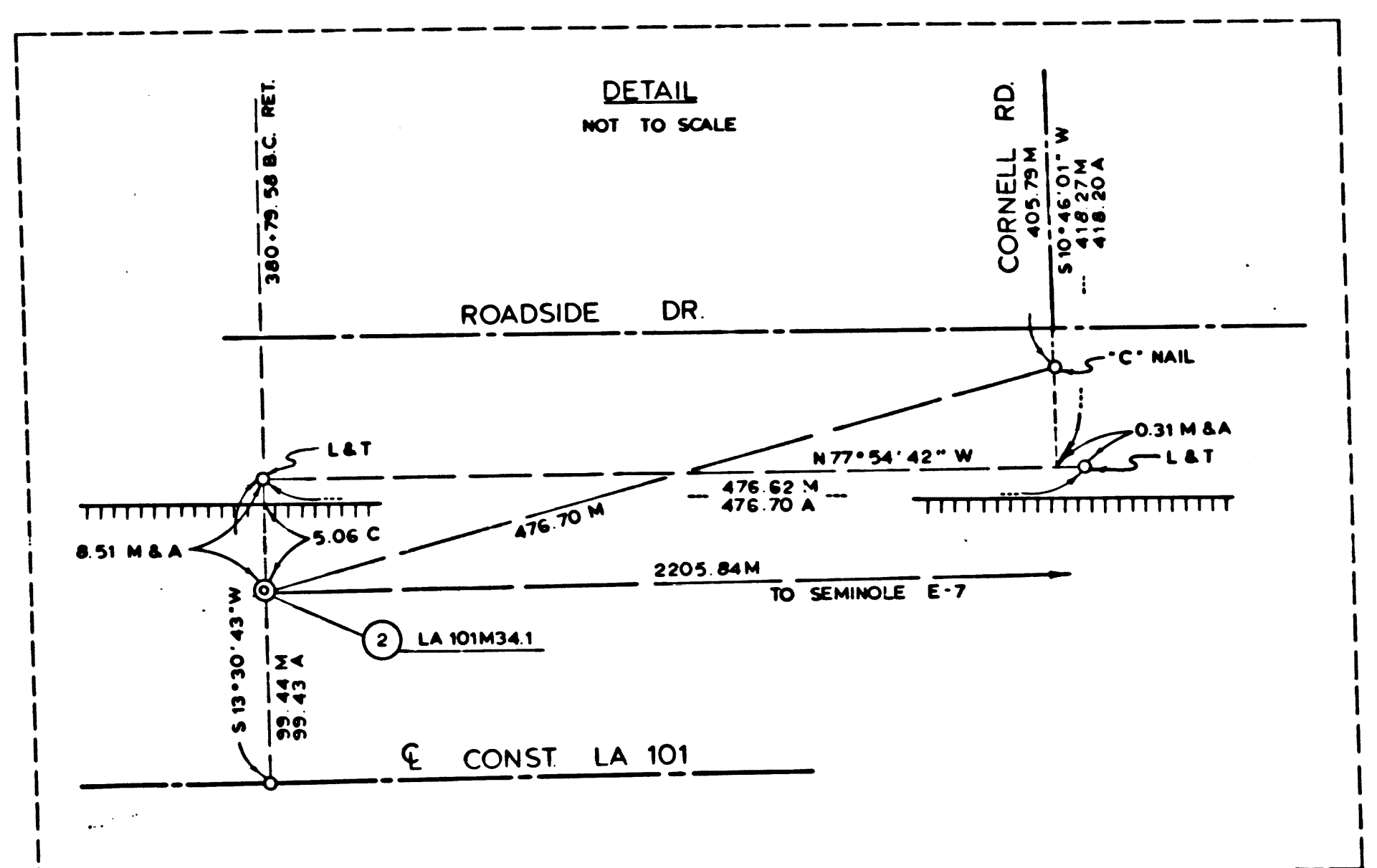
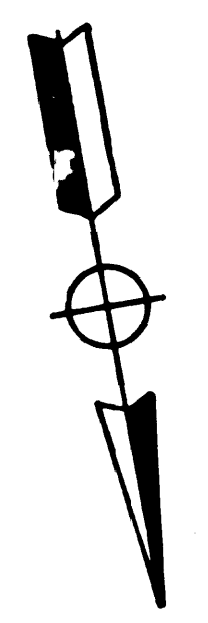
DISTRICT	COUNTY	ROUTE	POST MILES - TOTAL PROJECT	SHEET NO.	TOTAL SHEETS	DATE OF PARTY
07	LA	101	31.1 - 34.8	5	6	P. NELSON

STATE OF CALIFORNIA DEPT OF TRANSPORTATION  
SURVEYS  
MONUMENTATION MAP  
DATUM: CALIFORNIA COORDINATE SYSTEM - ZONE 7  
MAP NO. LA 101 M 34

Checked by: J. HUSSENDER  
Project Engineer: J. HUSSENDER  
Survey District Supervisor: D. EBERLY  
SEMPER ENGINEERS, SURVEYS  
A. E. VAN NUN  
DATE: AUGUST 1974

FM 21483-5

RANCHO LAS VIRGENES



NO.	NAME	DESCRIPTION	REFERENCE	COORDINATES
1	LA101M339	SET BRASS CAP MON	SR73-405-9, 16	
2	LA101M341	SET BRASS CAP MON	SR73-405-10, 16	

F.M. 21483-6

**LEGEND**

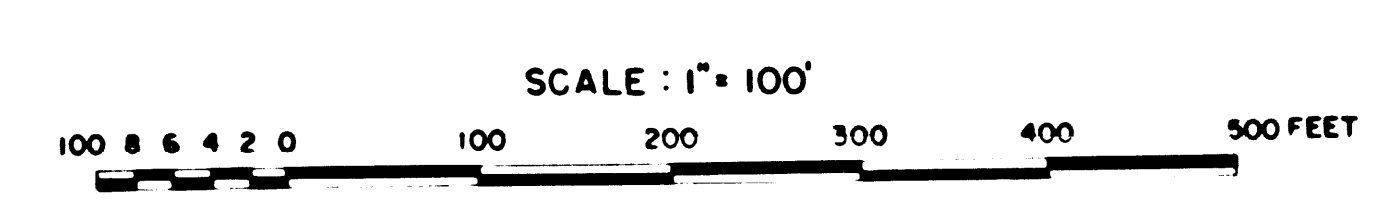
- ⊙ — SURVEY CONTROL POINTS
- — MONUMENTS SET OR FOUND, ALSO B.C.'S AND E.C.'S
- △ — ANGLE POINTS
- ◇ — SECTION CORNERS
- M — GROUND DISTANCE MEASURED
- C — CALCULATED VALUE
- CFM — CALCULATED FROM MEASURE
- A — ADJUSTED
- R — RECORDED VALUE AS ESTABLISHED PREVIOUSLY

**NOTE:**

- BEARINGS ARE BASED ON THE CALIFORNIA COORDINATE SYSTEM, DIVISION 8, SECTION 8009 OF THE 1955 PUBLIC RESOURCES CODE.
- DEPT. OF TRANSPORTATION SURVEY INFORMATION IS AVAILABLE FROM THE ENGINEERING SERVICES BRANCH, LOS ANGELES, CALIFORNIA.
- DEPT. OF TRANSPORTATION RIGHT OF WAY INFORMATION IS AVAILABLE FROM THE RIGHT OF WAY BRANCH, LOS ANGELES, CALIFORNIA.
- STATIONING SHOWN ON THIS MAP IS FOR REFERENCE ONLY.

**IN LOS ANGELES COUNTY**  
BLK. 1606

CONSTRUCTION CONTRACT NO. 07-100524  
COMPLETION DATE: MARCH 1974



**LOS ANGELES COUNTY FILE NO.**

DISTRICT	COUNTY	ROUTE	POST MILES - TOTAL PROJECT	SHEET TOTAL	NO. SHEETS	Sheet of Party
07	LA	101	311 - 34 B	6	6	P. NELSON

State of California DEPT. OF TRANSPORTATION  
SURVEYS  
MONUMENTATION MAP  
DATUM: CALIFORNIA COORDINATE SYSTEM - ZONE 7  
MAP NO. LA 101M35.0

Chief of Party: J. MUSSENDER  
Checked by: J. MUSSENDER  
Project Engineer: J. MUSSENDER  
Checked by: F. ROVAL  
Survey Office Supervisor: D. EBERLY  
SENOR ENGINEER SURVEYS  
A. ELWAN CIVIL E. 16906  
DATE: AUGUST 1974

NOTE: FOR  $\epsilon$  OF FWY TIES SEE SR73-405-9 & 10

15 RS 8/9  
82 RS 53  
PORTION OF LOT "H"

CSB 2857