

FM 21497
A1 OF A5

S

(1)

T

1963

TRACT NO. 22457
M.B. 659177-78

1:2500

1:2500

E 1/4 3600

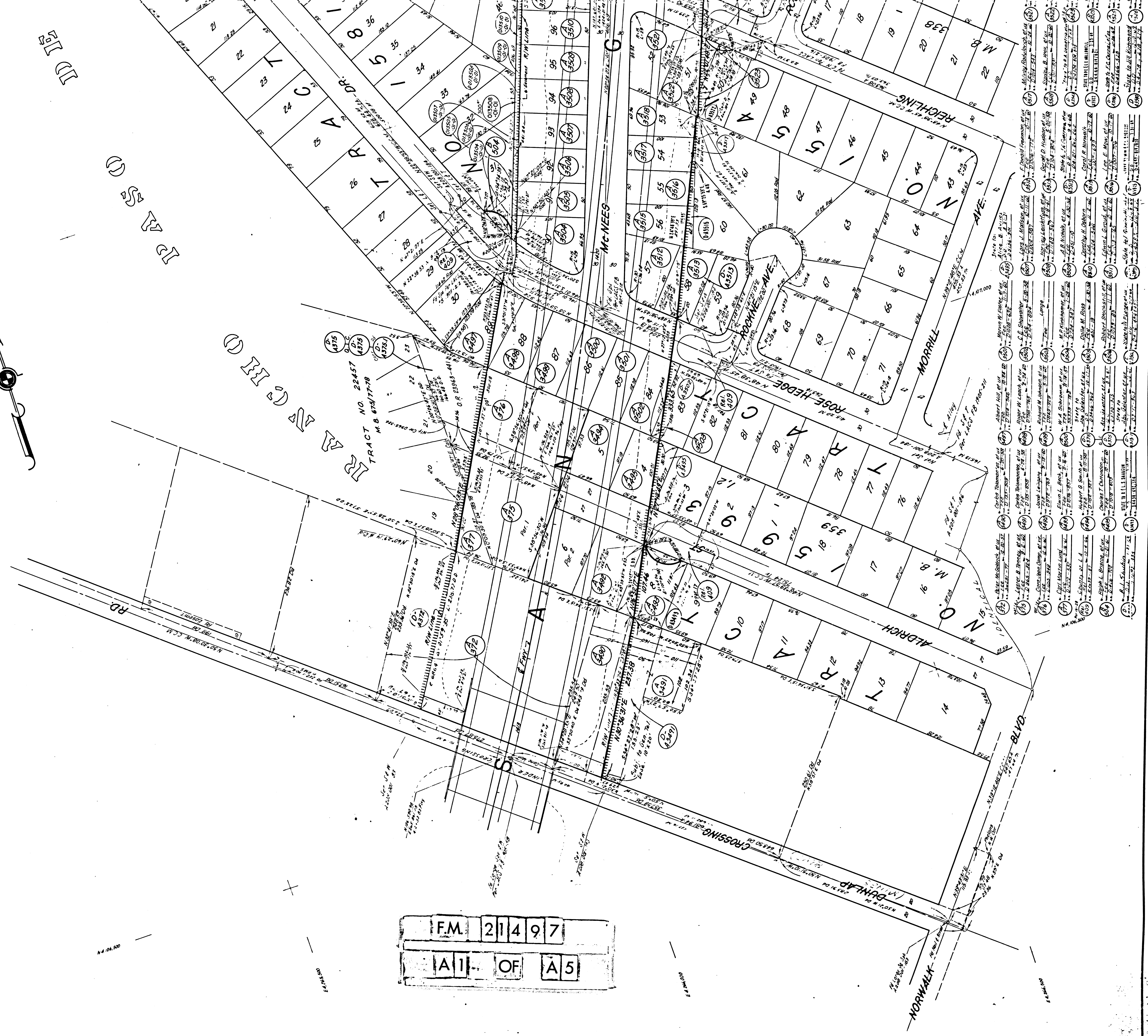
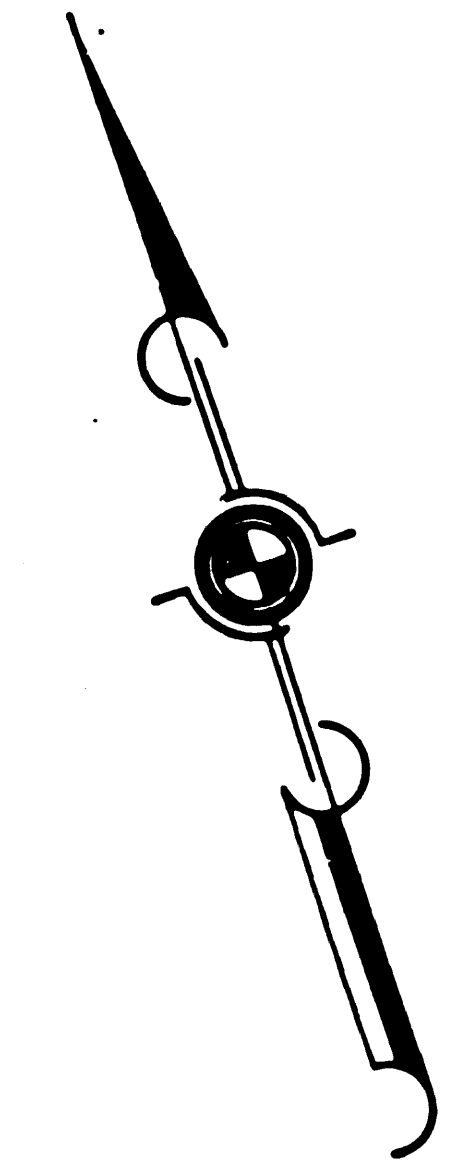
E 1/4 3600

1:2500

E 1/4 3600

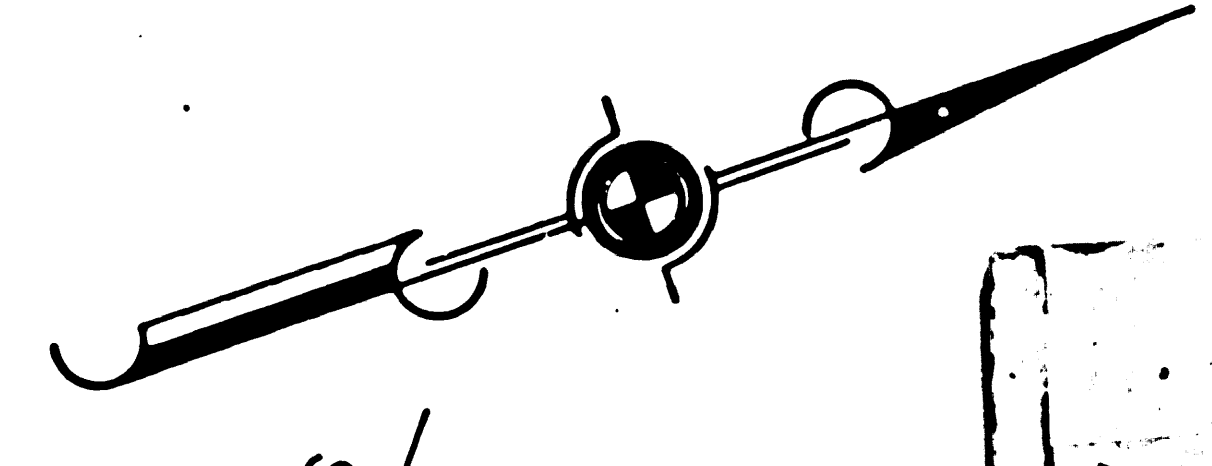
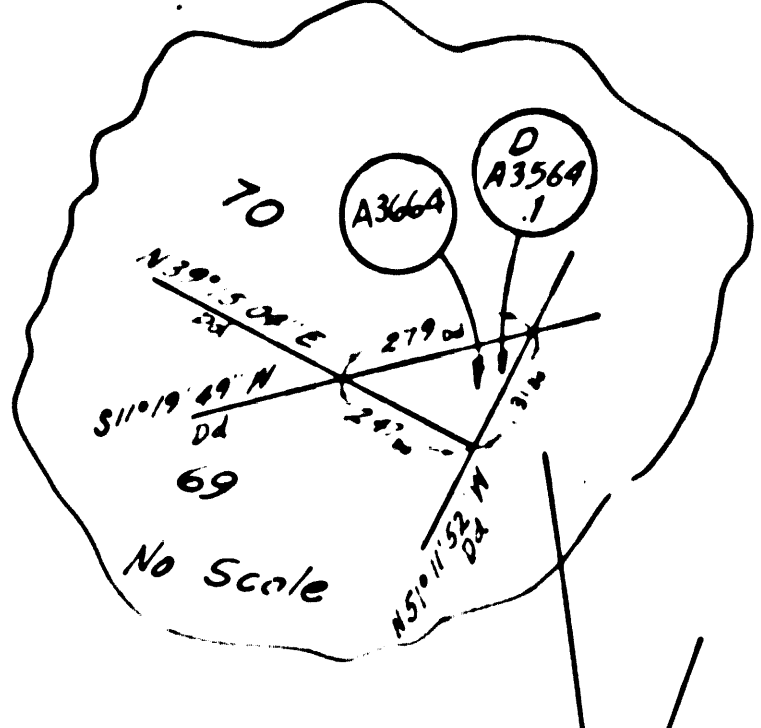
E 1/4 3600

E 1/4 3600



1	2	3	4	5	6	7	8	9	10	11	12	13	14	15	16	17	18	19	20	21	22	23	24	25	26	27	28	29	30	31	32	33	34	35	36	37	38	39	40	41	42	43	44	45	46	47	48	49	50	51	52	53	54	55	56	57	58	59	60	61	62	63	64	65	66	67	68	69	70	71	72	73	74	75	76	77	78	79	80	81	82	83	84	85	86	87	88	89	90	91	92	93	94	95	96	97	98	99	100
---	---	---	---	---	---	---	---	---	----	----	----	----	----	----	----	----	----	----	----	----	----	----	----	----	----	----	----	----	----	----	----	----	----	----	----	----	----	----	----	----	----	----	----	----	----	----	----	----	----	----	----	----	----	----	----	----	----	----	----	----	----	----	----	----	----	----	----	----	----	----	----	----	----	----	----	----	----	----	----	----	----	----	----	----	----	----	----	----	----	----	----	----	----	----	----	----	----	----	-----

E L E S



F.M. 21497
A3 OF A5



- | | | |
|---------------------------|---------------------------|-------------------------|
| Clifford I. Payne, et ux | S.H. Henderson, et ux | Jacob Krouse, et ux |
| Erud Chokunoff, et ux | Jack M. Bradley, et ux | J.J. McEthern, et ux |
| N.P. Rigby, et ux | G.D. Carter, et ux | James E. Harrell, et ux |
| Marion McDonald, et ux | J.J. Navell, et ux | Lull R. Spears, et ux |
| M.L. Heinrich | Lawrence E. Chagnard | Ignacio Feral Love |
| H.C. Moreno, et ux | Anton D. Geiger | J.P. Schava, et ux |
| H.C. Sharp, et ux | Leonard H. Kennell, et ux | Dim Millers, et ux |
| J.M. Enzweiler, et ux | Billy R. Sanders, et ux | M.C. Ruyke |
| Eugene E. Eldred, et ux | M.M. Camp, et ux | D.R. Waite, et ux |
| Raymond Louis, et ux | Roy D. Francis, et ux | W. J. Lowe, et ux |
| Clifford E. Odor, et ux | George B. Baze, et ux | W. J. Walker, et ux |
| Robert L. Woodrich, et ux | Frank L. Mathur, et ux | Evelyn Bourgard |
| Raymond Louis, et ux | Ray D. Francis, et ux | W. J. Lowe, et ux |
| W. J. Walker, et ux | E. J. Smith, et ux | Hazel H. Smith |
| W. E. Searest, et ux | W. E. Searest, et ux | W. E. Searest, et ux |

STATE TELEPHONE CO.
C.D. CASE, 5-13-49
D-43573
D-43574
D-43575
D-43576
D-43577
D-43578
D-43579
D-43580
D-43581
D-43582
D-43583
D-43584
D-43585
D-43586
D-43587
D-43588
D-43589
D-43590
D-43591
D-43592
D-43593
D-43594
D-43595
D-43596
D-43597
D-43598
D-43599
D-43600

C O U N

FM. 211497
A4 OF A5

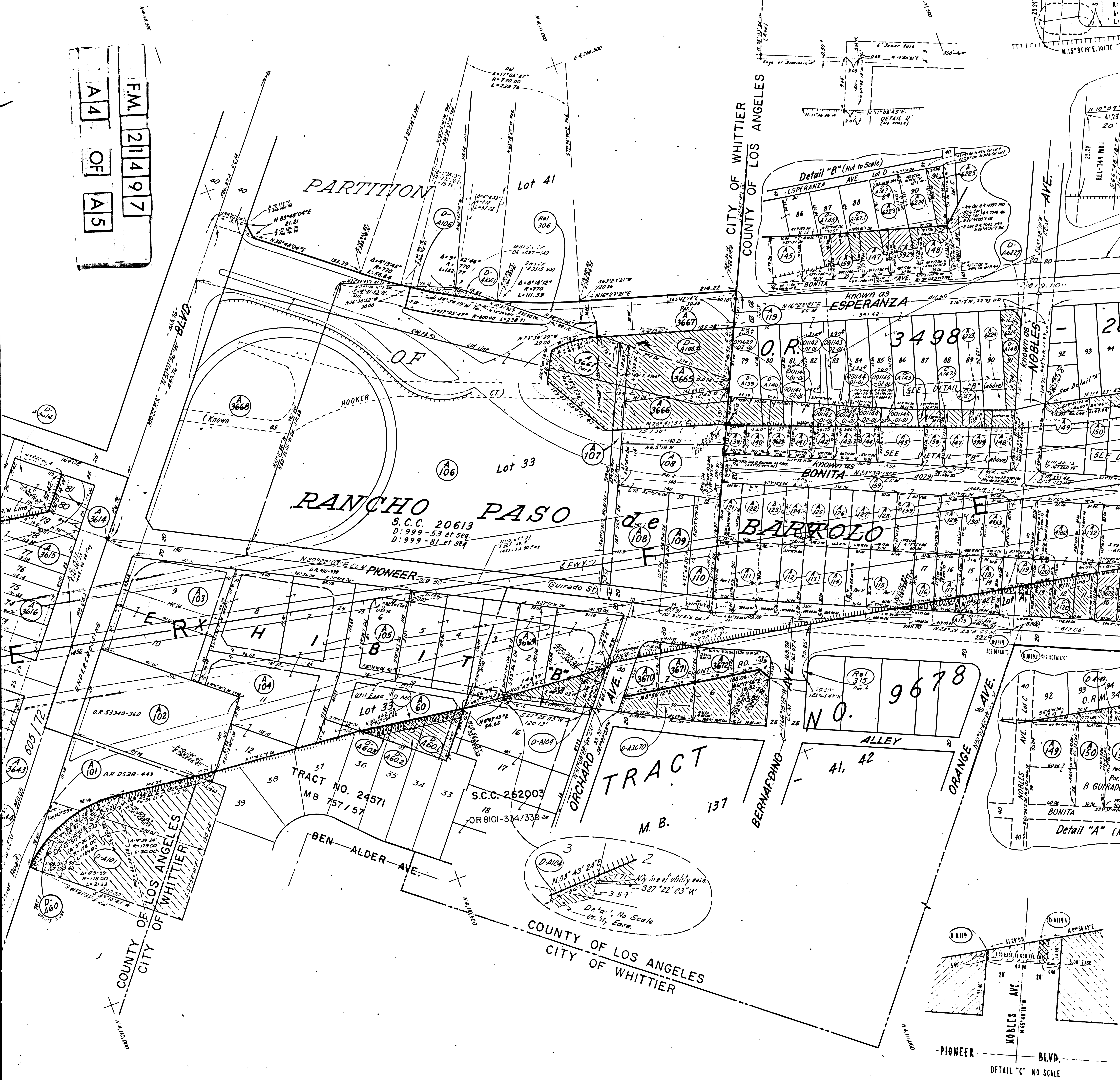
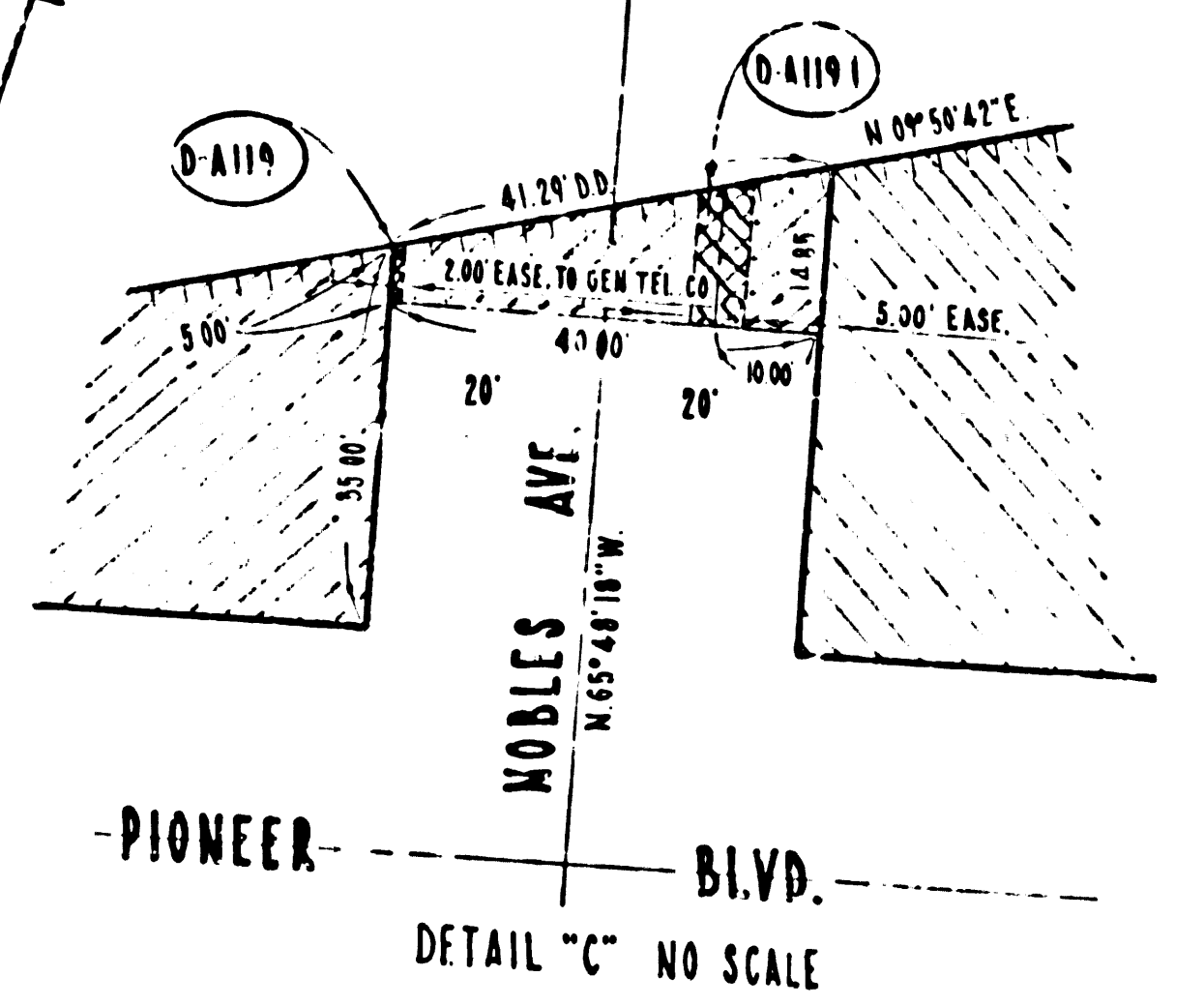
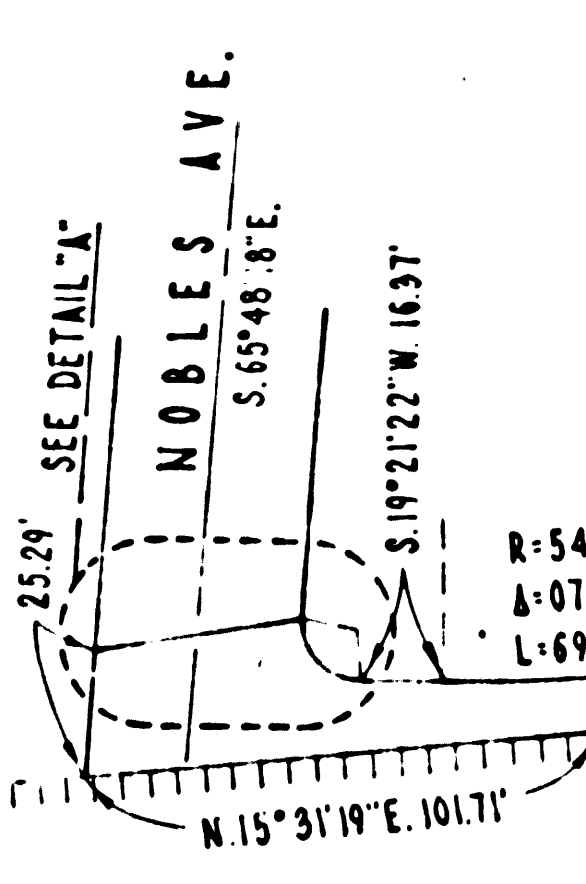
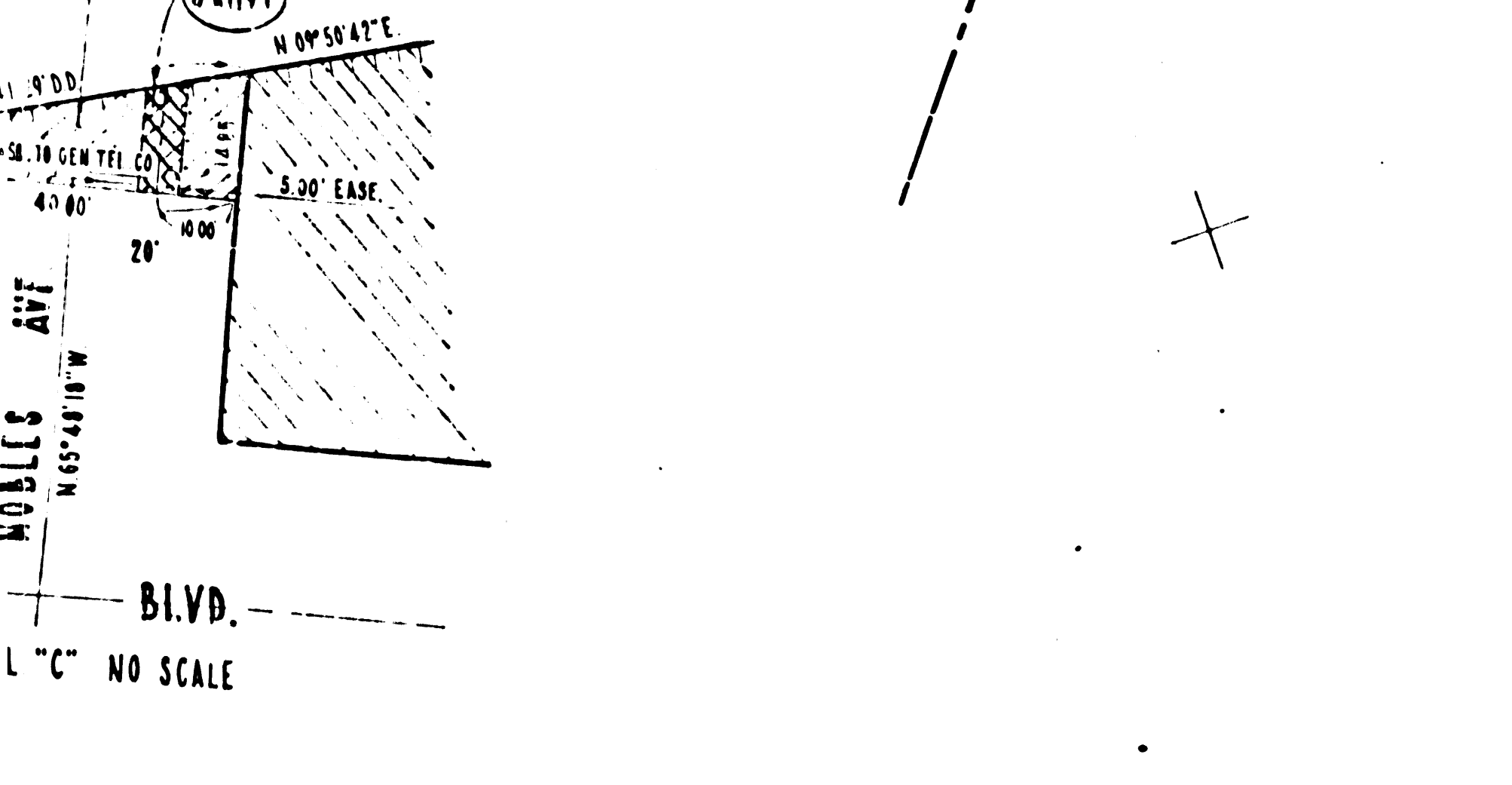
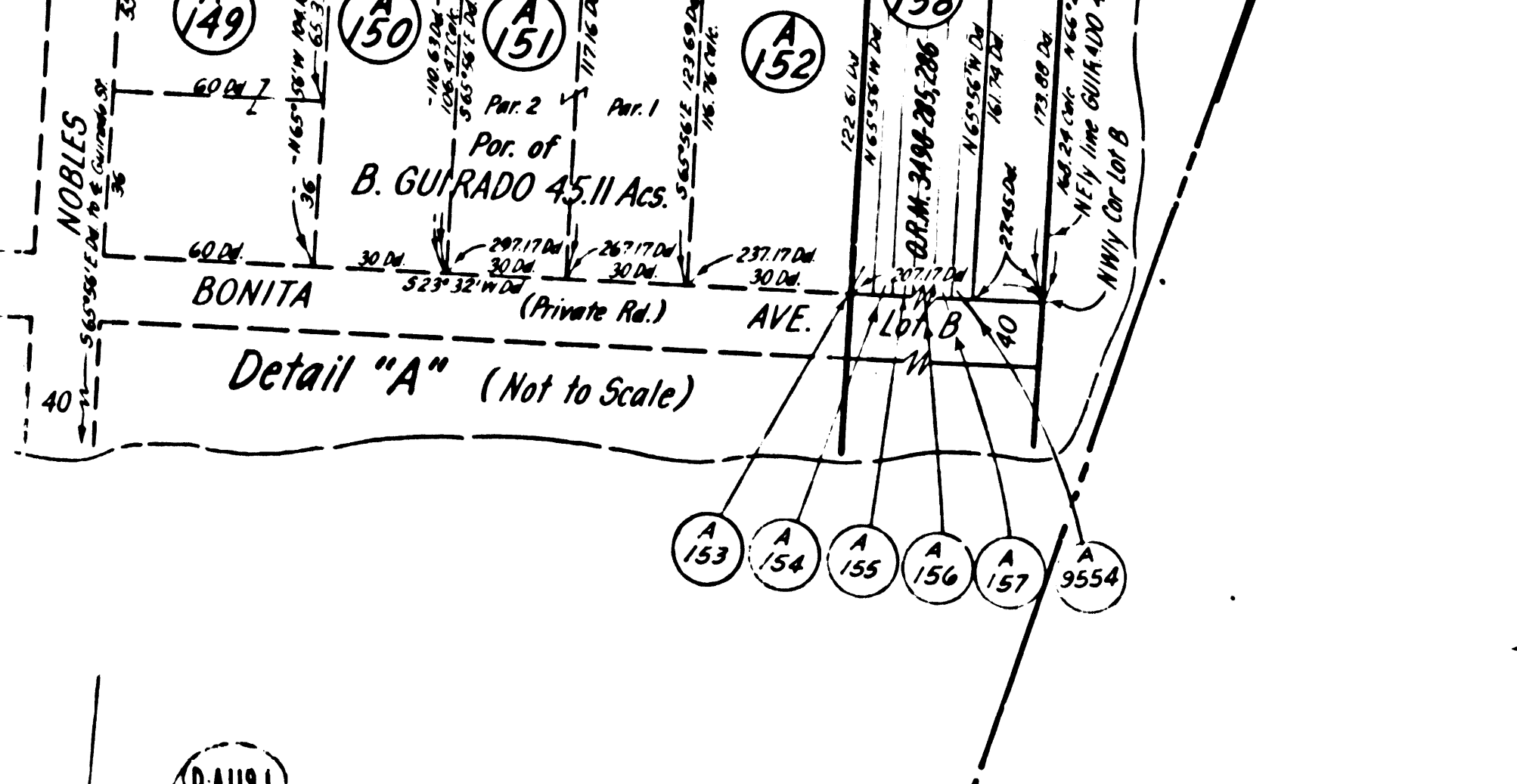
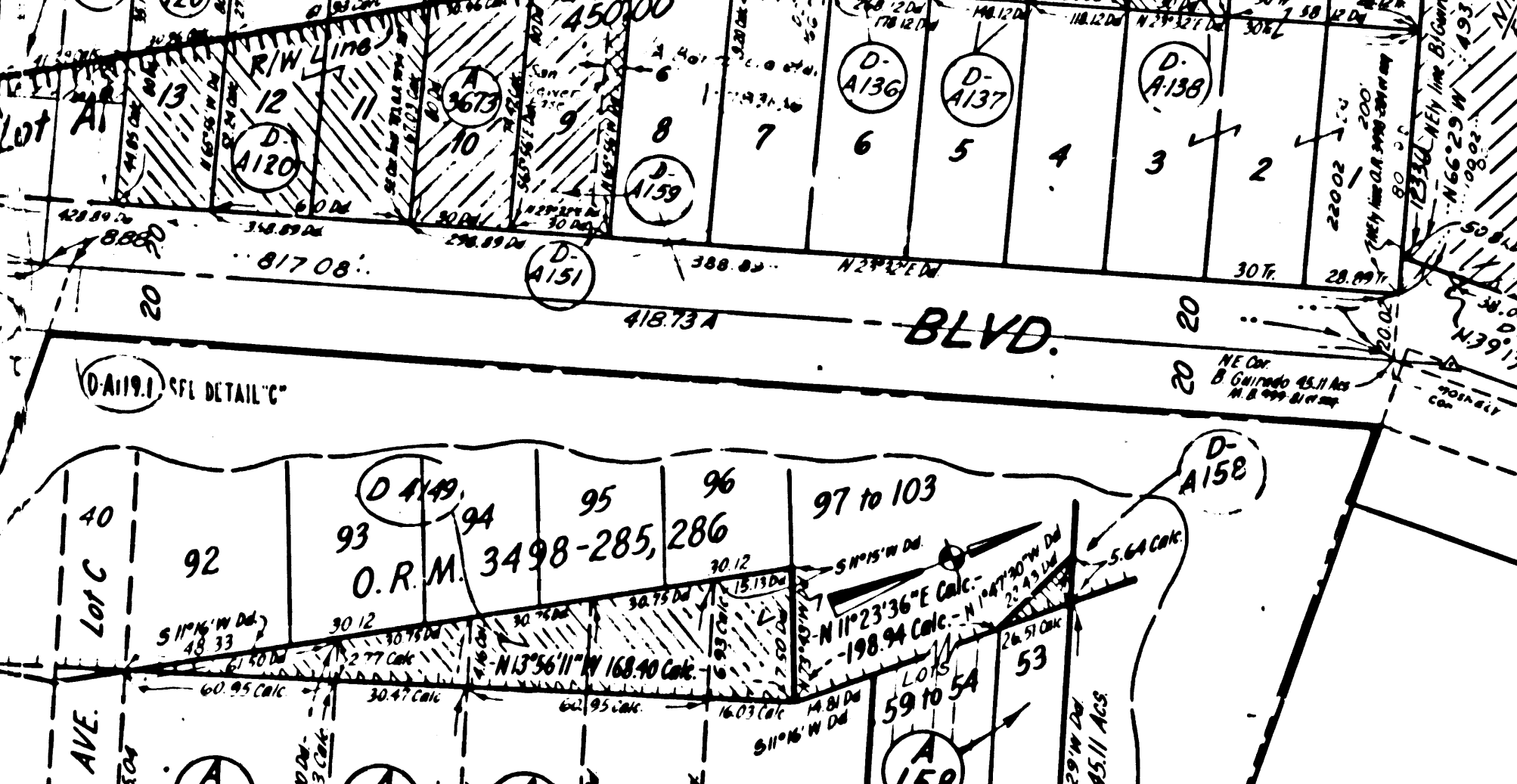
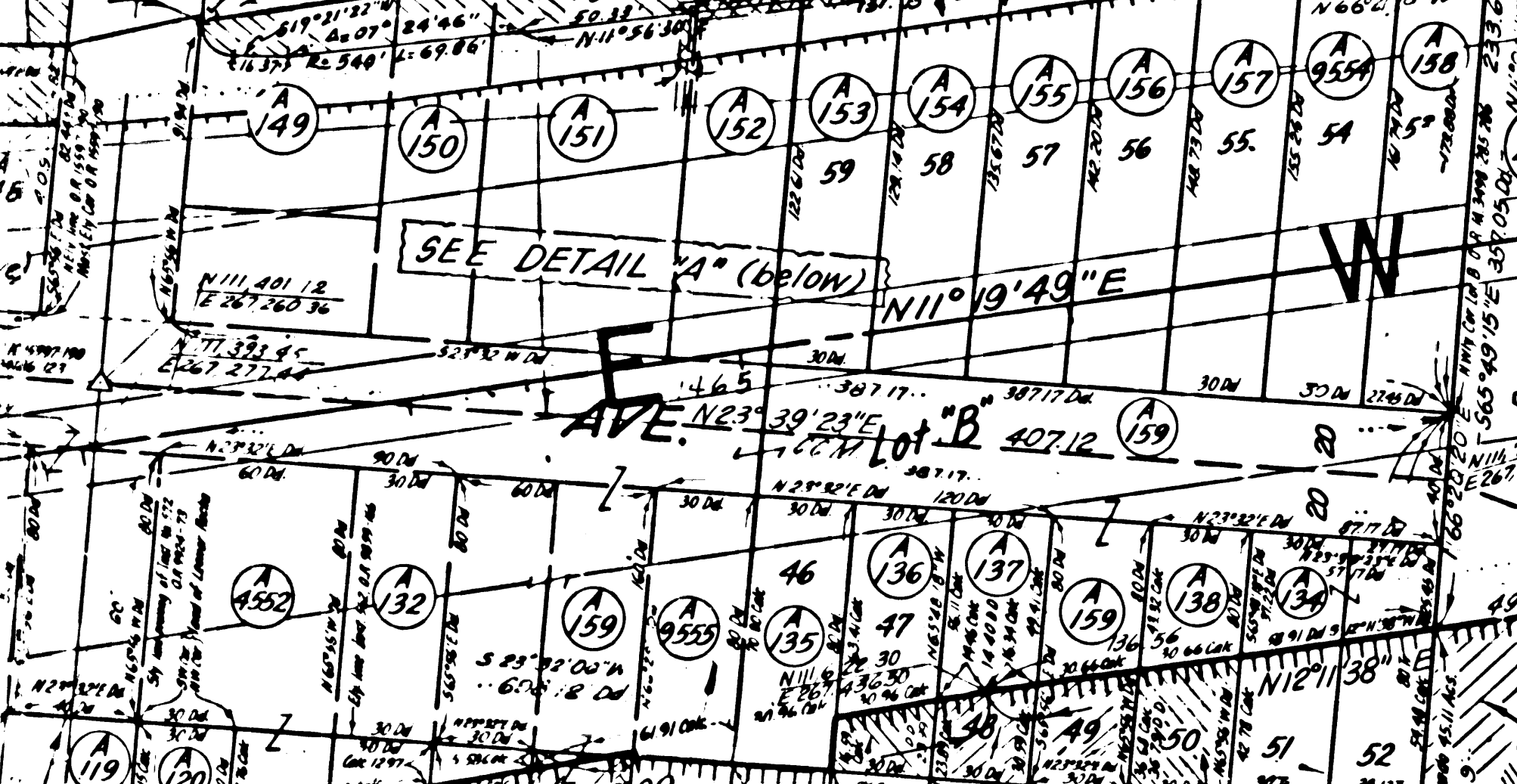
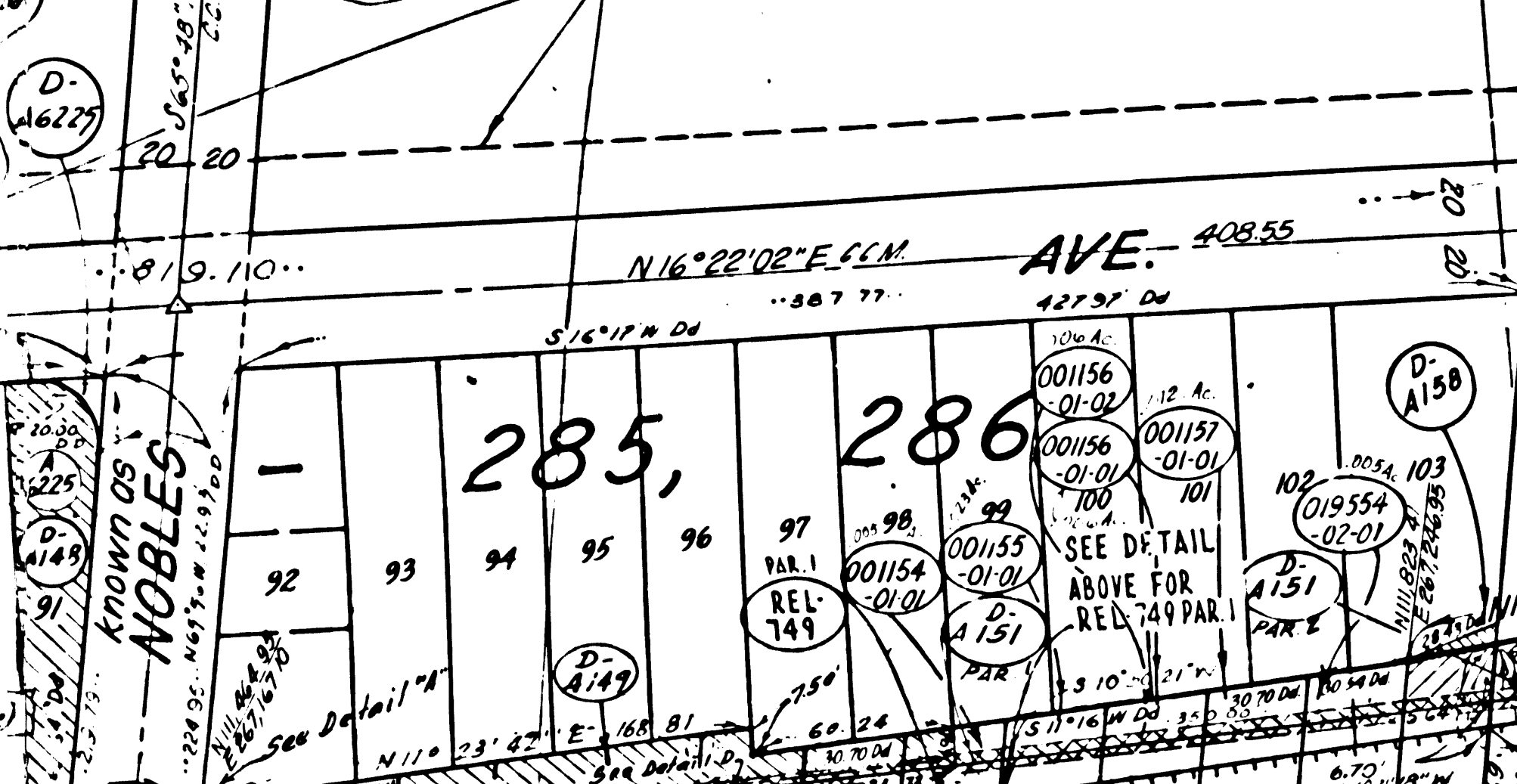
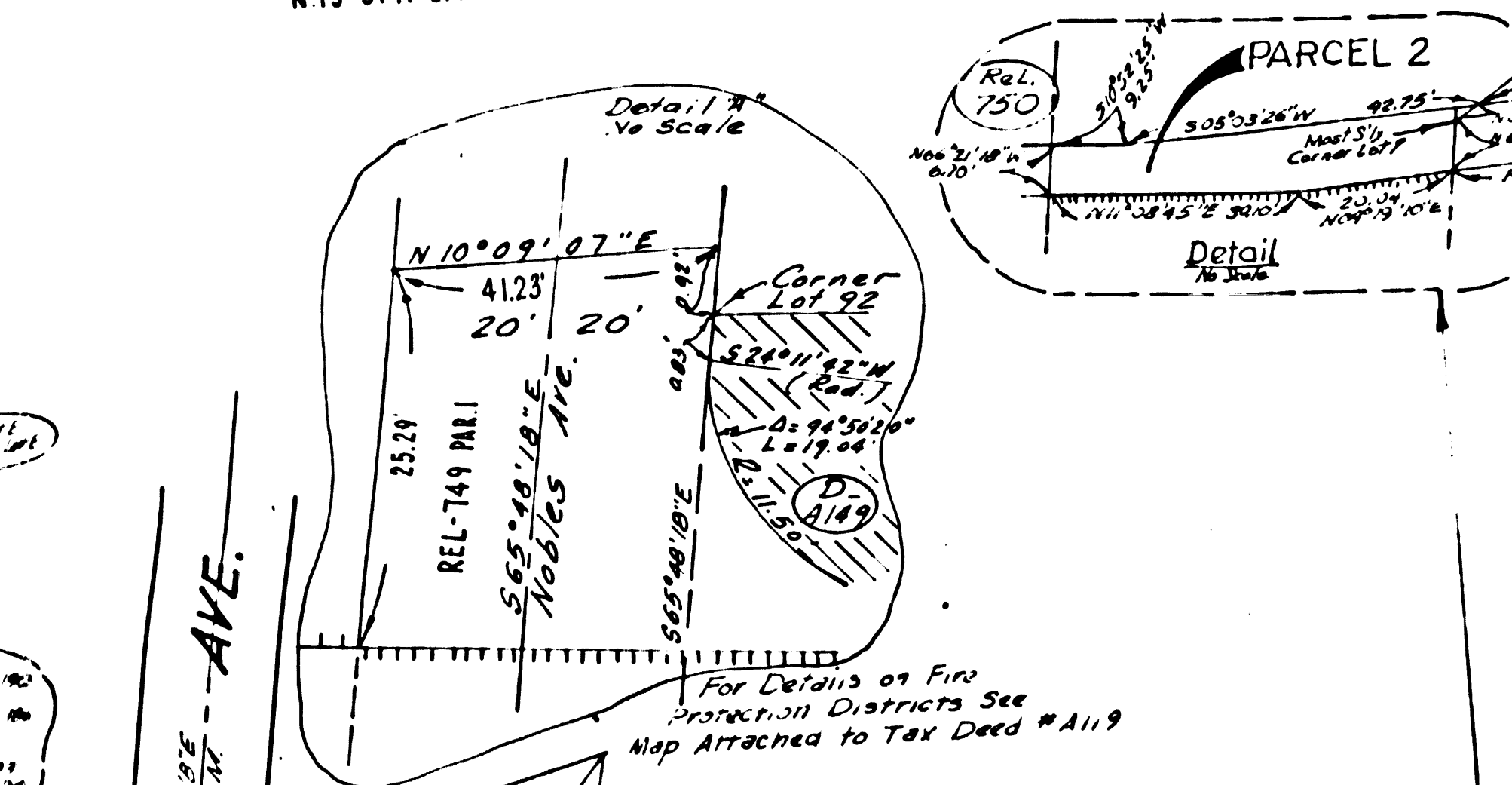
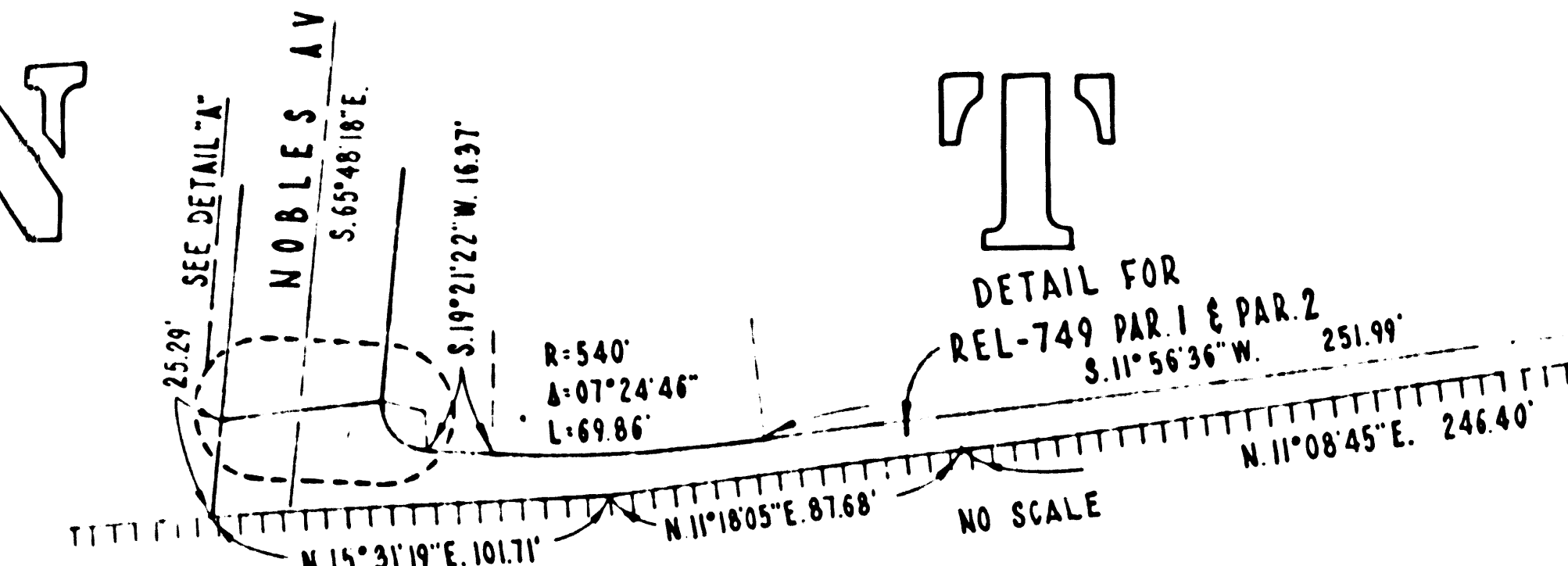


Table listing names and associated numbers (e.g., 366, 367, 368, etc.) for various lots and tracts.



DETAIL "C" NO SCALE



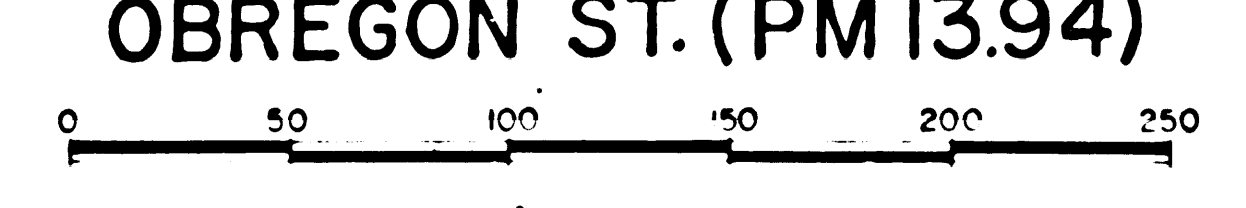
Blazzer, et al.	150	W. A. Becklee	183
Salazar, et al.	151	W. A. Becklee	184
Salazar, et al.	152	W. A. Becklee	185
Salazar, et al.	153	W. A. Becklee	186
Salazar, et al.	154	W. A. Becklee	187
Salazar, et al.	155	W. A. Becklee	188
Salazar, et al.	156	W. A. Becklee	189
Salazar, et al.	157	W. A. Becklee	190
Salazar, et al.	158	W. A. Becklee	191
Salazar, et al.	159	W. A. Becklee	192
Salazar, et al.	160	W. A. Becklee	193
Salazar, et al.	161	W. A. Becklee	194
Salazar, et al.	162	W. A. Becklee	195
Salazar, et al.	163	W. A. Becklee	196
Salazar, et al.	164	W. A. Becklee	197
Salazar, et al.	165	W. A. Becklee	198
Salazar, et al.	166	W. A. Becklee	199
Salazar, et al.	167	W. A. Becklee	200
Salazar, et al.	168	W. A. Becklee	201
Salazar, et al.	169	W. A. Becklee	202
Salazar, et al.	170	W. A. Becklee	203
Salazar, et al.	171	W. A. Becklee	204
Salazar, et al.	172	W. A. Becklee	205
Salazar, et al.	173	W. A. Becklee	206
Salazar, et al.	174	W. A. Becklee	207
Salazar, et al.	175	W. A. Becklee	208
Salazar, et al.	176	W. A. Becklee	209
Salazar, et al.	177	W. A. Becklee	210
Salazar, et al.	178	W. A. Becklee	211
Salazar, et al.	179	W. A. Becklee	212
Salazar, et al.	180	W. A. Becklee	213
Salazar, et al.	181	W. A. Becklee	214
Salazar, et al.	182	W. A. Becklee	215
Salazar, et al.	183	W. A. Becklee	216
Salazar, et al.	184	W. A. Becklee	217
Salazar, et al.	185	W. A. Becklee	218
Salazar, et al.	186	W. A. Becklee	219
Salazar, et al.	187	W. A. Becklee	220
Salazar, et al.	188	W. A. Becklee	221
Salazar, et al.	189	W. A. Becklee	222
Salazar, et al.	190	W. A. Becklee	223
Salazar, et al.	191	W. A. Becklee	224
Salazar, et al.	192	W. A. Becklee	225
Salazar, et al.	193	W. A. Becklee	226
Salazar, et al.	194	W. A. Becklee	227
Salazar, et al.	195	W. A. Becklee	228
Salazar, et al.	196	W. A. Becklee	229
Salazar, et al.	197	W. A. Becklee	230
Salazar, et al.	198	W. A. Becklee	231
Salazar, et al.	199	W. A. Becklee	232
Salazar, et al.	200	W. A. Becklee	233
Salazar, et al.	201	W. A. Becklee	234
Salazar, et al.	202	W. A. Becklee	235
Salazar, et al.	203	W. A. Becklee	236
Salazar, et al.	204	W. A. Becklee	237
Salazar, et al.	205	W. A. Becklee	238
Salazar, et al.	206	W. A. Becklee	239
Salazar, et al.	207	W. A. Becklee	240
Salazar, et al.	208	W. A. Becklee	241
Salazar, et al.	209	W. A. Becklee	242
Salazar, et al.	210	W. A. Becklee	243
Salazar, et al.	211	W. A. Becklee	244
Salazar, et al.	212	W. A. Becklee	245
Salazar, et al.	213	W. A. Becklee	246
Salazar, et al.	214	W. A. Becklee	247
Salazar, et al.	215	W. A. Becklee	248
Salazar, et al.	216	W. A. Becklee	249
Salazar, et al.	217	W. A. Becklee	250
Salazar, et al.	218	W. A. Becklee	251
Salazar, et al.	219	W. A. Becklee	252
Salazar, et al.	220	W. A. Becklee	253
Salazar, et al.	221	W. A. Becklee	254
Salazar, et al.	222	W. A. Becklee	255
Salazar, et al.	223	W. A. Becklee	256
Salazar, et al.	224	W. A. Becklee	257
Salazar, et al.	225	W. A. Becklee	258
Salazar, et al.	226	W. A. Becklee	259
Salazar, et al.	227	W. A. Becklee	260
Salazar, et al.	228	W. A. Becklee	261
Salazar, et al.	229	W. A. Becklee	262
Salazar, et al.	230	W. A. Becklee	263
Salazar, et al.	231	W. A. Becklee	264
Salazar, et al.	232	W. A. Becklee	265
Salazar, et al.	233	W. A. Becklee	266
Salazar, et al.	234	W. A. Becklee	267
Salazar, et al.	235	W. A. Becklee	268
Salazar, et al.	236	W. A. Becklee	269
Salazar, et al.	237	W. A. Becklee	270
Salazar, et al.	238	W. A. Becklee	271
Salazar, et al.	239	W. A. Becklee	272
Salazar, et al.	240	W. A. Becklee	273
Salazar, et al.	241	W. A. Becklee	274
Salazar, et al.	242	W. A. Becklee	275
Salazar, et al.	243	W. A. Becklee	276
Salazar, et al.	244	W. A. Becklee	277
Salazar, et al.	245	W. A. Becklee	278
Salazar, et al.	246	W. A. Becklee	279
Salazar, et al.	247	W. A. Becklee	280
Salazar, et al.	248	W. A. Becklee	281
Salazar, et al.	249	W. A. Becklee	282
Salazar, et al.	250	W. A. Becklee	283
Salazar, et al.	251	W. A. Becklee	284
Salazar, et al.	252	W. A. Becklee	285
Salazar, et al.	253	W. A. Becklee	286
Salazar, et al.	254	W. A. Becklee	287
Salazar, et al.	255	W. A. Becklee	288
Salazar, et al.	256	W. A. Becklee	289
Salazar, et al.	257	W. A. Becklee	290
Salazar, et al.	258	W. A. Becklee	291
Salazar, et al.	259	W. A. Becklee	292
Salazar, et al.	260	W. A. Becklee	293
Salazar, et al.	261	W. A. Becklee	294
Salazar, et al.	262	W. A. Becklee	295
Salazar, et al.	263	W. A. Becklee	296
Salazar, et al.	264	W. A. Becklee	297
Salazar, et al.	265	W. A. Becklee	298
Salazar, et al.	266	W. A. Becklee	299
Salazar, et al.	267	W. A. Becklee	300

FM 21497
 OF 15

INTERSTATE
 NOT TO BE TAKEN
 FROM DISTRICT OFFICE
 COORDINATES SHOWN ARE FOR INTERNAL USE OF THE DIVISION OF HIGHWAYS AND ARE TO BE USED FOR REFERENCE ONLY

STATE OF CALIFORNIA
 TRANSPORTATION AGENCY
 DEPARTMENT OF PUBLIC WORKS
 DIVISION OF HIGHWAYS
 ROAD: 7-LA-605
 (Old 7-LA-170-A,B)

RIGHT OF WAY RECORD MAP
 DUNLAP CROSSING (PM12.85)
 to
 OBREGON ST. (PM13.94)



FM 21497