

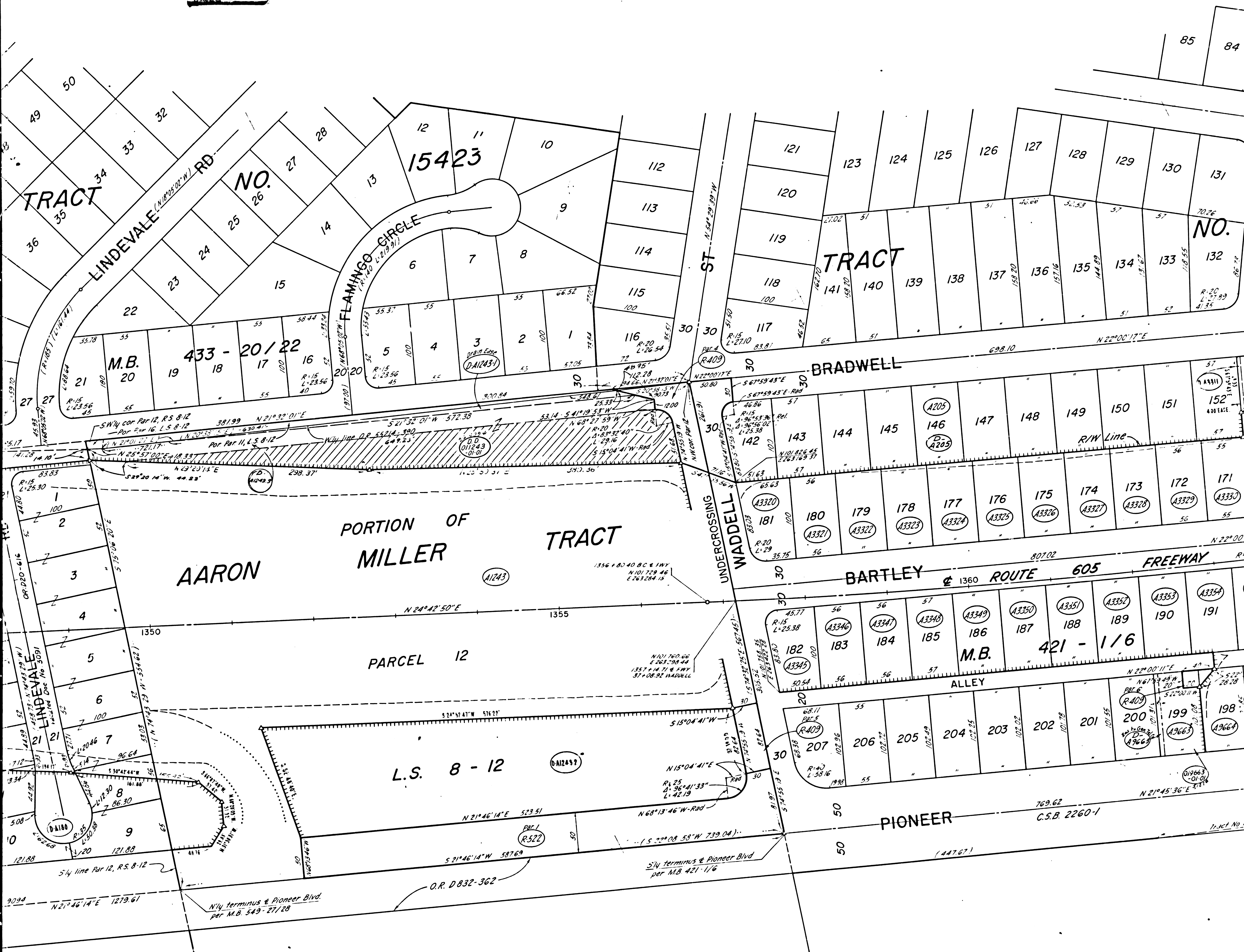


ALL OF A6
FM 211498

- | | | |
|---|--|---------------------------------------|
| (A3260) M.J. Smith, et al
Fee
25.18 458 | (A3274) G.H. Lambrough, Jr, et al
Fee
530.4 83 | (A3280) [unclear]
Fee
[unclear] |
| (A3261) [unclear]
Fee
[unclear] | (A3275) C.S. Masquous, et al
Fee
[unclear] | (A3281) [unclear]
Fee
[unclear] |
| (A3262) [unclear]
Fee
[unclear] | (A3276) J.R. Anderson, et al
Fee
[unclear] | (A3282) [unclear]
Fee
[unclear] |
| (A3263) [unclear]
Fee
[unclear] | (A3277) H.W. Sharp, et al
Fee
[unclear] | (A3283) [unclear]
Fee
[unclear] |
| (A3264) [unclear]
Fee
[unclear] | (A3278) J.P. Morrell, et al
Fee
[unclear] | (A3284) [unclear]
Fee
[unclear] |
| (A3265) [unclear]
Fee
[unclear] | (A3279) R.L. Keith, et al
Fee
[unclear] | (A3285) [unclear]
Fee
[unclear] |
| (A3266) [unclear]
Fee
[unclear] | (A3286) [unclear]
Fee
[unclear] | |

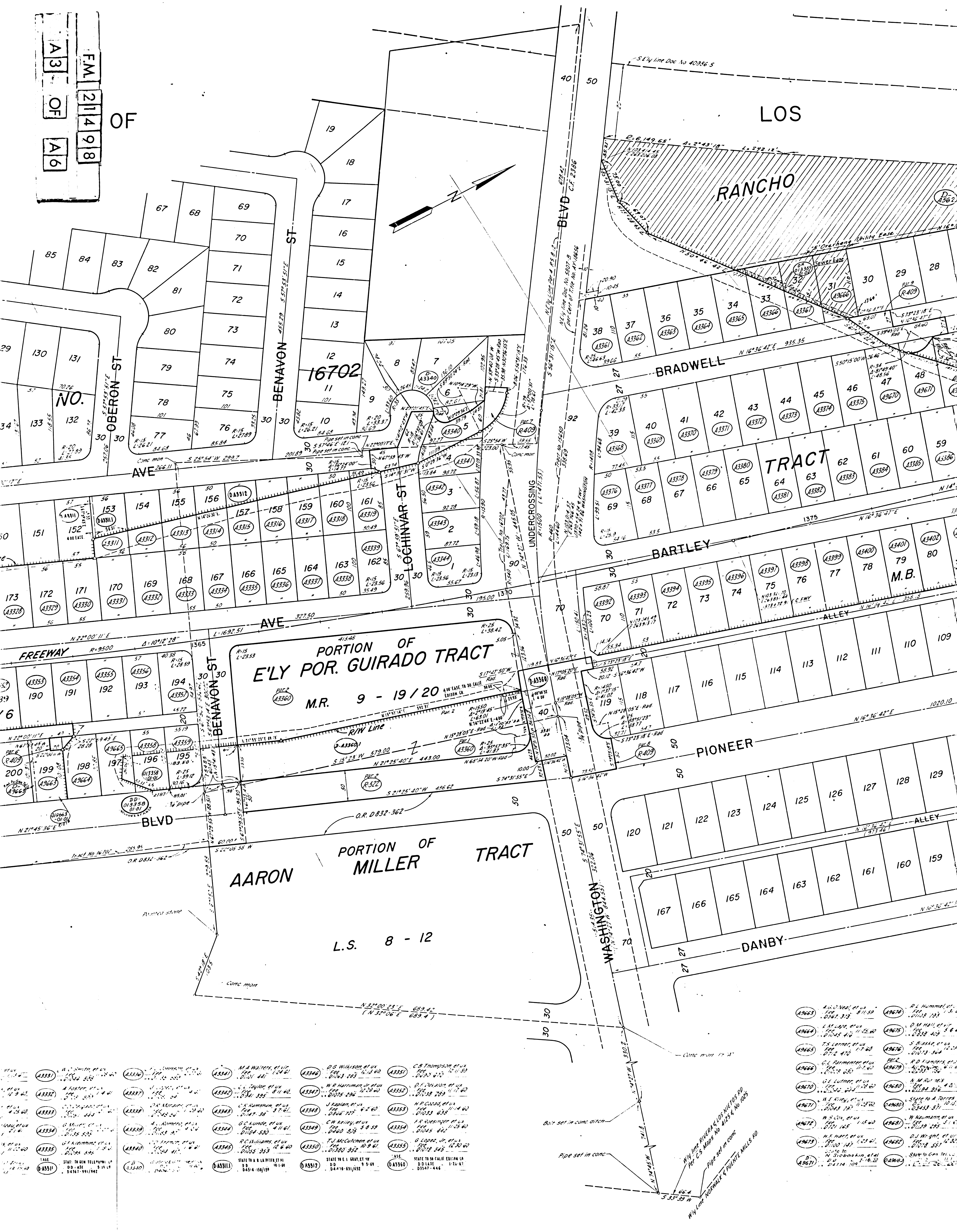
F.M. 21498
A2 OF A6

COUNTY



- | | | | | | | | | | | | |
|--|--|---|---|---|---|---|---|--|--|--|--|
| (A3274) G. H. Kumbrough, et ux
Fee
5/30/48 | (A3280) C. W. Clarry, et ux
Fee
1/10/54 | (A3286) M. K. Parker, et ux
Fee
1/10/54 | (A3292) S. S. Damon, et ux
Fee
1/10/54 | (A180) Maxine Jones, et ux
Fee
1/10/54 | (A3298) J. J. Carter, et ux
Fee
1/10/54 | (A3304) R. C. Miller, et ux
Fee
1/10/54 | (A3310) A. Santana, et ux
Fee
1/10/54 | (A3316) J. J. Aruse, et ux
Fee
1/10/54 | (A3322) R. P. Floran, et ux
Fee
1/10/54 | (A3328) J. A. Smith, et ux
Fee
1/10/54 | (A3334) J. A. Smith, et ux
Fee
1/10/54 |
| (A3275) C. S. Magnuson, et ux
Fee
1/10/54 | (A3281) F. H. Franklin, et ux
Fee
1/10/54 | (A3287) H. W. Webster, et ux
Fee
1/10/54 | (A3293) D. R. Sandoval, et ux
Fee
1/10/54 | (A188) S. J. Jones, et ux
Fee
1/10/54 | (A3299) A. M. Auguston, et ux
Fee
1/10/54 | (A3305) R. L. Lewis, et ux
Fee
1/10/54 | (A3311) J. W. Livingston, et ux
Fee
1/10/54 | (A3317) H. W. Bacon, et ux
Fee
1/10/54 | (A3323) J. C. Burdick, et ux
Fee
1/10/54 | (A3329) R. E. Brown, et ux
Fee
1/10/54 | (A3335) J. A. Smith, et ux
Fee
1/10/54 |
| (A3276) J. B. Anderson, et ux
Fee
1/10/54 | (A3282) R. L. Ellington, et ux
Fee
1/10/54 | (A3288) W. M. Grubbs, et ux
Fee
1/10/54 | (A3294) A. M. Auguston, et ux
Fee
1/10/54 | (A205) R. L. Johnson, et ux
Fee
1/10/54 | (A3295) J. M. Hunter, et ux
Fee
1/10/54 | (A3301) L. Y. Muller, et ux
Fee
1/10/54 | (A3307) M. LaPoint, et ux
Fee
1/10/54 | (A3313) L. A. Luett, et ux
Fee
1/10/54 | (A3319) J. M. Gomez, et ux
Fee
1/10/54 | (A3325) J. L. Pomeroy, et ux
Fee
1/10/54 | (A3331) J. A. Smith, et ux
Fee
1/10/54 |
| (A3277) H. W. Sharp, et ux
Fee
1/10/54 | (A3283) A. A. Dones, et ux
Fee
1/10/54 | (A3289) H. S. Thompson, et ux
Fee
1/10/54 | (A3295) J. M. Hunter, et ux
Fee
1/10/54 | (A1243) A. P. H. et ux
Fee
1/10/54 | (A3296) R. C. Brown, Jr., et ux
Fee
1/10/54 | (A3302) D. E. Dyens, et ux
Fee
1/10/54 | (A3308) R. L. Kuntzer, et ux
Fee
1/10/54 | (A3314) E. E. Moore, et ux
Fee
1/10/54 | (A3320) E. Campbell, et ux
Fee
1/10/54 | (A3326) S. S. Strauss, et ux
Fee
1/10/54 | (A3332) J. A. Smith, et ux
Fee
1/10/54 |
| (A3278) J. P. Marrell, et ux
Fee
1/10/54 | (A3284) B. Reardon, et ux
Fee
1/10/54 | (A3290) H. S. Thompson, et ux
Fee
1/10/54 | (A3296) R. C. Brown, Jr., et ux
Fee
1/10/54 | (A1243) A. P. H. et ux
Fee
1/10/54 | (A3297) M. J. Castaneda, et ux
Fee
1/10/54 | (A3303) W. C. Jones, et ux
Fee
1/10/54 | (A3309) F. E. Moore, et ux
Fee
1/10/54 | (A3315) S. L. Pleinle, et ux
Fee
1/10/54 | (A3321) E. Campbell, et ux
Fee
1/10/54 | (A3327) S. S. Strauss, et ux
Fee
1/10/54 | (A3333) J. A. Smith, et ux
Fee
1/10/54 |
| (A3279) R. E. Keith, et ux
Fee
1/10/54 | (A3285) B. A. Holdeman, et ux
Fee
1/10/54 | (A3291) E. L. R. D. Harker, et ux
Fee
1/10/54 | (A3297) M. J. Castaneda, et ux
Fee
1/10/54 | (A1243) A. P. H. et ux
Fee
1/10/54 | (A3298) M. J. Castaneda, et ux
Fee
1/10/54 | (A3304) D. E. Dyens, et ux
Fee
1/10/54 | (A3310) R. L. Kuntzer, et ux
Fee
1/10/54 | (A3316) S. L. Pleinle, et ux
Fee
1/10/54 | (A3322) E. Campbell, et ux
Fee
1/10/54 | (A3328) S. S. Strauss, et ux
Fee
1/10/54 | (A3334) J. A. Smith, et ux
Fee
1/10/54 |

A3 OF A6
F.M. 21498



A3331	A3332	A3333	A3334	A3335	A3336	A3337	A3338	A3339	A3340
W. C. Smith, et ux	A. Foster, et ux	C. J. ...	W. ...	A. ...	A. ...	A. ...	A. ...	A. ...	A. ...

A3341	A3342	A3343	A3344	A3345	A3346	A3347	A3348	A3349	A3350
M. A. Walters, et ux	L. Taylor, et ux	C. ...	G. ...	A. ...	A. ...	A. ...	A. ...	A. ...	A. ...

A3351	A3352	A3353	A3354	A3355	A3356	A3357	A3358	A3359	A3360
D. S. ...	W. R. ...	J. ...	C. W. ...	T. J. ...	G. ...	A. ...	A. ...	A. ...	A. ...

A3361	A3362	A3363	A3364	A3365	A3366	A3367	A3368	A3369	A3370
C. R. ...	D. F. ...	H. P. ...	H. Q. ...	G. Lopez, Jr., et ux	A. ...	A. ...	A. ...	A. ...	A. ...

A3371	A3372	A3373	A3374	A3375	A3376	A3377	A3378	A3379	A3380
A. ...	A. ...	A. ...	A. ...	A. ...	A. ...	A. ...	A. ...	A. ...	A. ...

A3381	A3382	A3383	A3384	A3385	A3386	A3387	A3388	A3389	A3390
A. ...	A. ...	A. ...	A. ...	A. ...	A. ...	A. ...	A. ...	A. ...	A. ...

A3391	A3392	A3393	A3394	A3395	A3396	A3397	A3398	A3399	A3400
A. ...	A. ...	A. ...	A. ...	A. ...	A. ...	A. ...	A. ...	A. ...	A. ...

A3401	A3402	A3403	A3404	A3405	A3406	A3407	A3408	A3409	A3410
A. ...	A. ...	A. ...	A. ...	A. ...	A. ...	A. ...	A. ...	A. ...	A. ...

A3411	A3412	A3413	A3414	A3415	A3416	A3417	A3418	A3419	A3420
A. ...	A. ...	A. ...	A. ...	A. ...	A. ...	A. ...	A. ...	A. ...	A. ...

A3421	A3422	A3423	A3424	A3425	A3426	A3427	A3428	A3429	A3430
A. ...	A. ...	A. ...	A. ...	A. ...	A. ...	A. ...	A. ...	A. ...	A. ...

A3431	A3432	A3433	A3434	A3435	A3436	A3437	A3438	A3439	A3440
A. ...	A. ...	A. ...	A. ...	A. ...	A. ...	A. ...	A. ...	A. ...	A. ...

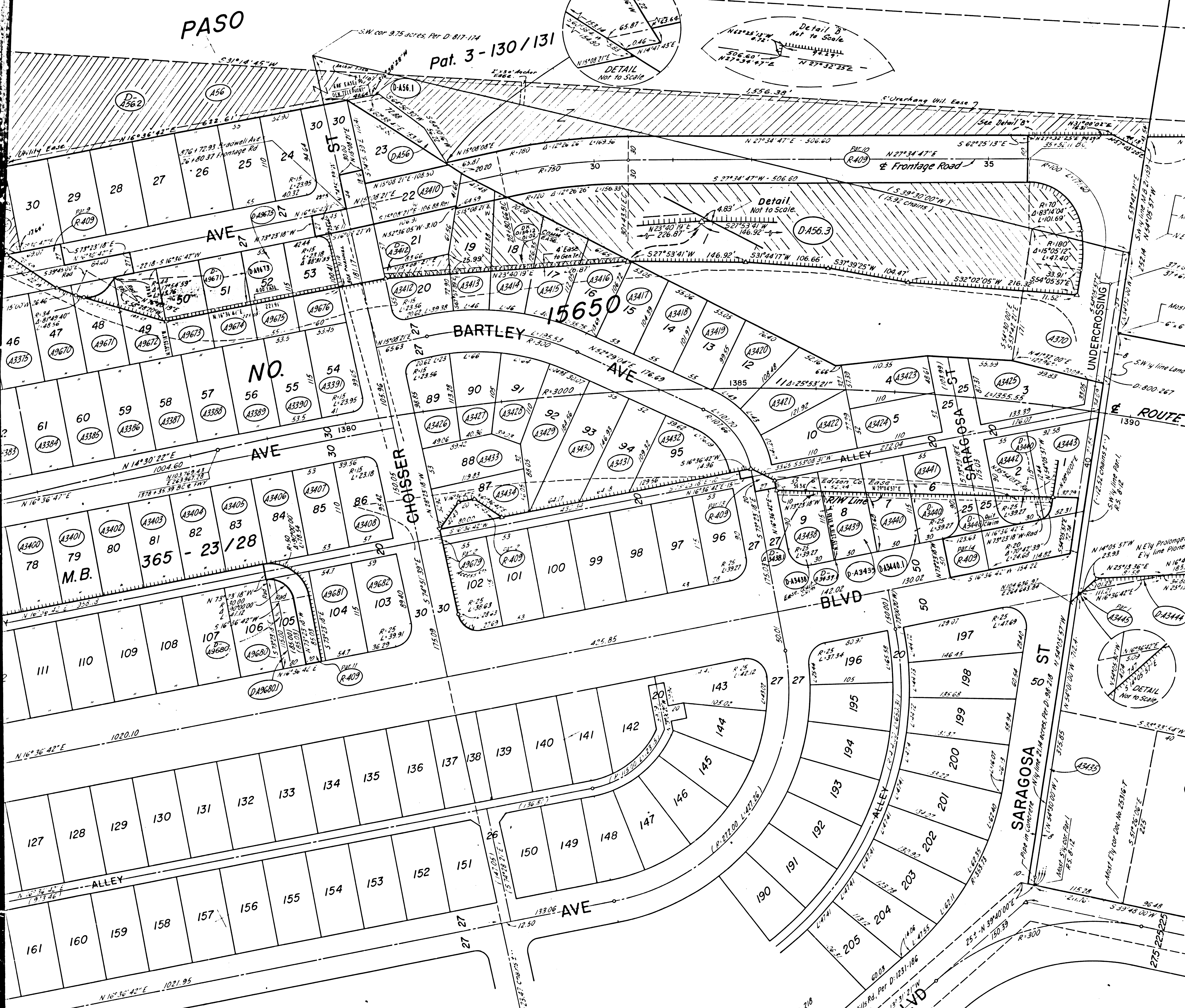
W4 Line RIVER & LOS VITOS RD
Per C.S. Maps No. 1125 & No. 1005
Pipe set in conc.

But set in conc ditch

Pipe set in conc

BARTOLO ANGELES

PORTION OF DE PASO



- | | |
|---|--|
| <p>(A3404) J. Bolton, et ux
1210 S. 2nd St.
1210 S. 2nd St.
1210 S. 2nd St.</p> <p>(A3405) J. H. Pugh, et ux
1210 S. 2nd St.
1210 S. 2nd St.
1210 S. 2nd St.</p> <p>(A3406) H. A. Rayson, et ux
1210 S. 2nd St.
1210 S. 2nd St.
1210 S. 2nd St.</p> <p>(A3407) K. P. Shafter, et ux
1210 S. 2nd St.
1210 S. 2nd St.
1210 S. 2nd St.</p> <p>(A3408) J. J. Snyder, et ux
1210 S. 2nd St.
1210 S. 2nd St.
1210 S. 2nd St.</p> <p>(A3409) R. L. Perry, et ux
1210 S. 2nd St.
1210 S. 2nd St.
1210 S. 2nd St.</p> <p>(A3410) E. J. McLean, et ux
1210 S. 2nd St.
1210 S. 2nd St.
1210 S. 2nd St.</p> <p>(A3411) E. J. Clisworth, et ux
1210 S. 2nd St.
1210 S. 2nd St.
1210 S. 2nd St.</p> <p>(A3412) R. R. Fogle, et ux
1210 S. 2nd St.
1210 S. 2nd St.
1210 S. 2nd St.</p> <p>(A3413) F. W. Morgan, et ux
1210 S. 2nd St.
1210 S. 2nd St.
1210 S. 2nd St.</p> <p>(A3414) J. B. Akin, et ux
1210 S. 2nd St.
1210 S. 2nd St.
1210 S. 2nd St.</p> <p>(A3415) F. N. Hamilton, et ux
1210 S. 2nd St.
1210 S. 2nd St.
1210 S. 2nd St.</p> <p>(A3416) G. W. Deeming, et ux
1210 S. 2nd St.
1210 S. 2nd St.
1210 S. 2nd St.</p> <p>(A3417) A. A. Johnson, et ux
1210 S. 2nd St.
1210 S. 2nd St.
1210 S. 2nd St.</p> <p>(A3418) M. E. Watkins, et ux
1210 S. 2nd St.
1210 S. 2nd St.
1210 S. 2nd St.</p> <p>(A3419) B. R. Dickie, et ux
1210 S. 2nd St.
1210 S. 2nd St.
1210 S. 2nd St.</p> <p>(A3420) J. M. Ballard, et ux
1210 S. 2nd St.
1210 S. 2nd St.
1210 S. 2nd St.</p> <p>(A3421) D. E. Disbro, et ux
1210 S. 2nd St.
1210 S. 2nd St.
1210 S. 2nd St.</p> <p>(A3422) J. L. Fortney, et ux
1210 S. 2nd St.
1210 S. 2nd St.
1210 S. 2nd St.</p> <p>(A3423) K. S. Nemcomb, et ux
1210 S. 2nd St.
1210 S. 2nd St.
1210 S. 2nd St.</p> <p>(A3424) W. E. Elliott, et ux
1210 S. 2nd St.
1210 S. 2nd St.
1210 S. 2nd St.</p> <p>(A3425) D. E. Sutton, et ux
1210 S. 2nd St.
1210 S. 2nd St.
1210 S. 2nd St.</p> <p>(A3426) H. E. Longley, et ux
1210 S. 2nd St.
1210 S. 2nd St.
1210 S. 2nd St.</p> <p>(A3427) J. Lewis, et ux
1210 S. 2nd St.
1210 S. 2nd St.
1210 S. 2nd St.</p> <p>(A3428) M. A. Jacobson, et ux
1210 S. 2nd St.
1210 S. 2nd St.
1210 S. 2nd St.</p> <p>(A3429) State to R. L. Ludy, et ux
1210 S. 2nd St.
1210 S. 2nd St.
1210 S. 2nd St.</p> <p>(A3430) State to S. G. L. Edson, et ux
1210 S. 2nd St.
1210 S. 2nd St.
1210 S. 2nd St.</p> <p>(A3431) State to S. G. L. Edson, et ux
1210 S. 2nd St.
1210 S. 2nd St.
1210 S. 2nd St.</p> <p>(A3432) State to S. G. L. Edson, et ux
1210 S. 2nd St.
1210 S. 2nd St.
1210 S. 2nd St.</p> <p>(A3433) State to S. G. L. Edson, et ux
1210 S. 2nd St.
1210 S. 2nd St.
1210 S. 2nd St.</p> <p>(A3434) State to S. G. L. Edson, et ux
1210 S. 2nd St.
1210 S. 2nd St.
1210 S. 2nd St.</p> <p>(A3435) State to S. G. L. Edson, et ux
1210 S. 2nd St.
1210 S. 2nd St.
1210 S. 2nd St.</p> | <p>(A3300) J. H. Pugh, et ux
1210 S. 2nd St.
1210 S. 2nd St.
1210 S. 2nd St.</p> <p>(A3301) J. H. Pugh, et ux
1210 S. 2nd St.
1210 S. 2nd St.
1210 S. 2nd St.</p> <p>(A3302) J. H. Pugh, et ux
1210 S. 2nd St.
1210 S. 2nd St.
1210 S. 2nd St.</p> <p>(A3303) J. H. Pugh, et ux
1210 S. 2nd St.
1210 S. 2nd St.
1210 S. 2nd St.</p> <p>(A3304) J. H. Pugh, et ux
1210 S. 2nd St.
1210 S. 2nd St.
1210 S. 2nd St.</p> <p>(A3305) J. H. Pugh, et ux
1210 S. 2nd St.
1210 S. 2nd St.
1210 S. 2nd St.</p> <p>(A3306) J. H. Pugh, et ux
1210 S. 2nd St.
1210 S. 2nd St.
1210 S. 2nd St.</p> <p>(A3307) J. H. Pugh, et ux
1210 S. 2nd St.
1210 S. 2nd St.
1210 S. 2nd St.</p> <p>(A3308) J. H. Pugh, et ux
1210 S. 2nd St.
1210 S. 2nd St.
1210 S. 2nd St.</p> <p>(A3309) J. H. Pugh, et ux
1210 S. 2nd St.
1210 S. 2nd St.
1210 S. 2nd St.</p> <p>(A3310) J. H. Pugh, et ux
1210 S. 2nd St.
1210 S. 2nd St.
1210 S. 2nd St.</p> <p>(A3311) J. H. Pugh, et ux
1210 S. 2nd St.
1210 S. 2nd St.
1210 S. 2nd St.</p> <p>(A3312) J. H. Pugh, et ux
1210 S. 2nd St.
1210 S. 2nd St.
1210 S. 2nd St.</p> <p>(A3313) J. H. Pugh, et ux
1210 S. 2nd St.
1210 S. 2nd St.
1210 S. 2nd St.</p> <p>(A3314) J. H. Pugh, et ux
1210 S. 2nd St.
1210 S. 2nd St.
1210 S. 2nd St.</p> <p>(A3315) J. H. Pugh, et ux
1210 S. 2nd St.
1210 S. 2nd St.
1210 S. 2nd St.</p> <p>(A3316) J. H. Pugh, et ux
1210 S. 2nd St.
1210 S. 2nd St.
1210 S. 2nd St.</p> <p>(A3317) J. H. Pugh, et ux
1210 S. 2nd St.
1210 S. 2nd St.
1210 S. 2nd St.</p> <p>(A3318) J. H. Pugh, et ux
1210 S. 2nd St.
1210 S. 2nd St.
1210 S. 2nd St.</p> <p>(A3319) J. H. Pugh, et ux
1210 S. 2nd St.
1210 S. 2nd St.
1210 S. 2nd St.</p> <p>(A3320) J. H. Pugh, et ux
1210 S. 2nd St.
1210 S. 2nd St.
1210 S. 2nd St.</p> <p>(A3321) J. H. Pugh, et ux
1210 S. 2nd St.
1210 S. 2nd St.
1210 S. 2nd St.</p> <p>(A3322) J. H. Pugh, et ux
1210 S. 2nd St.
1210 S. 2nd St.
1210 S. 2nd St.</p> <p>(A3323) J. H. Pugh, et ux
1210 S. 2nd St.
1210 S. 2nd St.
1210 S. 2nd St.</p> <p>(A3324) J. H. Pugh, et ux
1210 S. 2nd St.
1210 S. 2nd St.
1210 S. 2nd St.</p> <p>(A3325) J. H. Pugh, et ux
1210 S. 2nd St.
1210 S. 2nd St.
1210 S. 2nd St.</p> <p>(A3326) J. H. Pugh, et ux
1210 S. 2nd St.
1210 S. 2nd St.
1210 S. 2nd St.</p> <p>(A3327) J. H. Pugh, et ux
1210 S. 2nd St.
1210 S. 2nd St.
1210 S. 2nd St.</p> <p>(A3328) J. H. Pugh, et ux
1210 S. 2nd St.
1210 S. 2nd St.
1210 S. 2nd St.</p> <p>(A3329) J. H. Pugh, et ux
1210 S. 2nd St.
1210 S. 2nd St.
1210 S. 2nd St.</p> <p>(A3330) J. H. Pugh, et ux
1210 S. 2nd St.
1210 S. 2nd St.
1210 S. 2nd St.</p> |
|---|--|

F.M. 21498
A4 OF A6

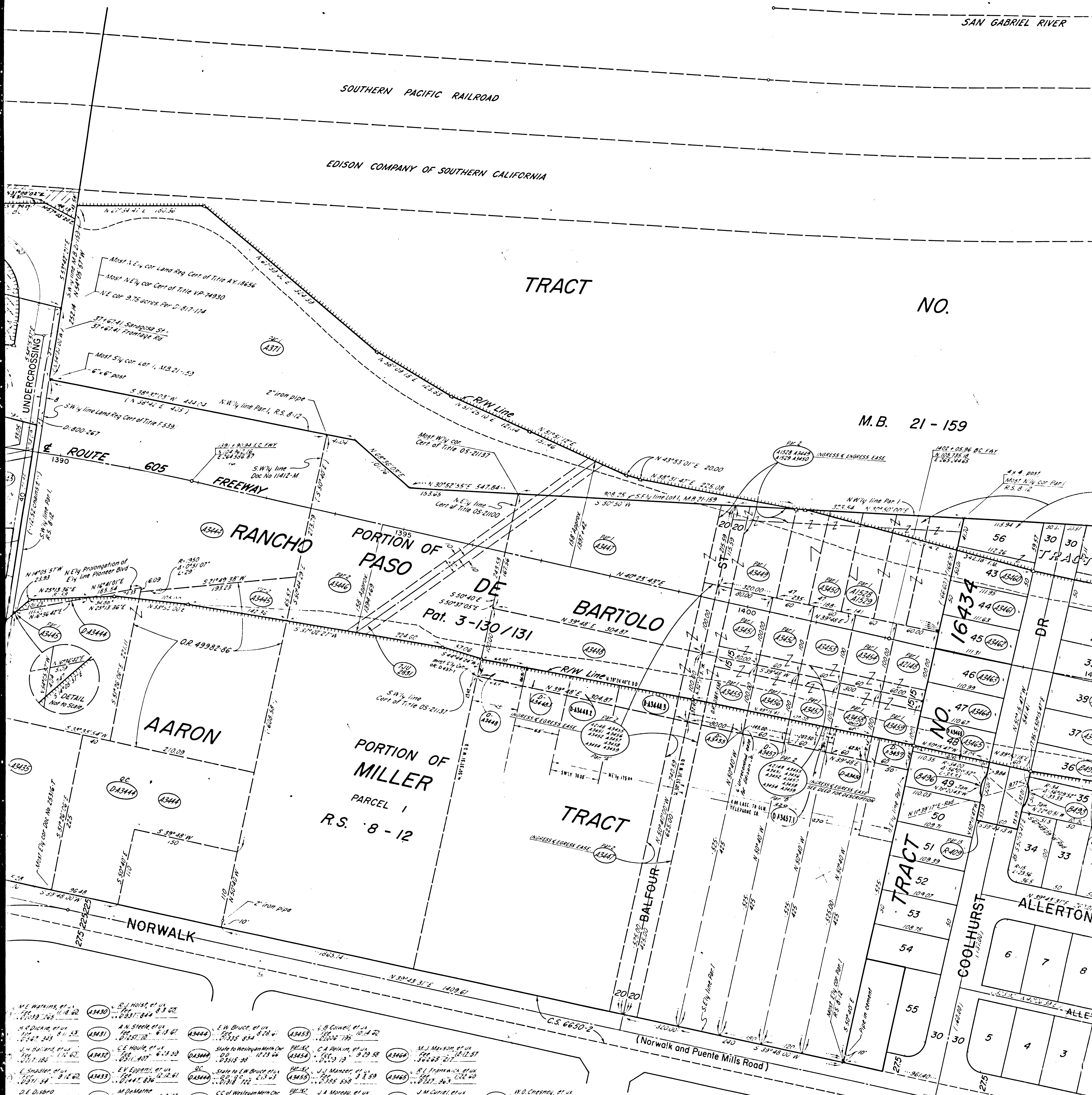
SOUTHERN PACIFIC RAILROAD

EDISON COMPANY OF SOUTHERN CALIFORNIA

TRACT

NO.

M.B. 21-159



- | | | | | | | | | | |
|--|--|---|---|--|---|---------------------------------------|-------------------------------------|--------------------------------------|--------------------------------------|
| M.E. Watkins, et al. 11.8.62
A3430 | S.J. Hoist, et al. 8.3.62
A3431 | A.N. Steele, et al. 8.18.61
A3432 | E.W. Bruce, et al. 8.28.61
A3433 | L.B. Council, et al. 10.14.62
A3434 | M.J. Morrison, et al. 12.12.51
A3435 | W.O. Chesney, et al. 11.2.52
A3436 | S.M. Gault, et al. 8.24.60
A3437 | K. Rothman, et al. 11.24.51
A3438 | V.O. Dodson, et al. 11.2.52
A3439 |
| J.N. Dickie, et al. 11.23.53
A3431 | A.N. Steele, et al. 8.18.61
A3432 | C.E. Houle, et al. 6.23.52
A3433 | State to Westlynn Muth Co. 12.23.66
A3434 | C.A. Rehm, et al. 12.23.58
A3435 | M.J. Morrison, et al. 12.12.51
A3436 | R.L. Franck, et al. 12.26.60
A3437 | J.D. Bantz, et al. 8.11.60
A3438 | M. Grobe, et al. 4.26.61
A3439 | E.A. Casey, et al. 4.25.62
A3440 |
| J.H. Baird, et al. 11.1.62
A3432 | E.V. Lopez, et al. 12.12.61
A3433 | M. Delamater, et al. 12.6.60
A3434 | State to E.W. Bruce, et al. 12.13.63
A3435 | J.J. Marston, et al. 9.29.59
A3436 | J.M. Currier, et al. 8.17.61
A3437 | R.L. Franck, et al. 12.26.60
A3438 | M.E. Adams, et al. 8.22.60
A3439 | E.A. Casey, et al. 4.25.62
A3440 | E.S. Duggan, et al. 8.12.62
A3441 |
| E. Smidler, et al. 9.14.62
A3433 | M. Delamater, et al. 12.6.60
A3434 | City of Santa Fe Springs, et al. 8.6.63
A3435 | CC of Westlynn Muth Co. 12.23.66
A3436 | J.A. Verrell, et al. 2.25.59
A3437 | J.M. Currier, et al. 8.17.61
A3438 | R.L. Franck, et al. 12.26.60
A3439 | M.E. Adams, et al. 8.22.60
A3440 | E.A. Casey, et al. 4.25.62
A3441 | E.S. Duggan, et al. 8.12.62
A3442 |
| D.E. Osborn, et al. 12.2.52
A3434 | City of Santa Fe Springs, et al. 8.6.63
A3435 | D.L. Crosby, et al. 12.16.60
A3436 | J.B. Houghton, et al. 1.22.63
A3437 | C.M. Reyes, et al. 4.24.58
A3438 | J.M. Currier, et al. 8.17.61
A3439 | R.L. Franck, et al. 12.26.60
A3440 | M.E. Adams, et al. 8.22.60
A3441 | E.A. Casey, et al. 4.25.62
A3442 | E.S. Duggan, et al. 8.12.62
A3443 |
| A. Wilson, et al. 10.18.62
A3435 | D.L. Crosby, et al. 12.16.60
A3436 | W.R. Ellison, et al. 10.25.60
A3437 | W.M. Hubbard, et al. 4.11.59
A3438 | J.T. Knowles, et al. 7.6.60
A3439 | M. Farowich, et al. 8.25.58
A3440 | R.L. Franck, et al. 12.26.60
A3441 | M.E. Adams, et al. 8.22.60
A3442 | E.A. Casey, et al. 4.25.62
A3443 | E.S. Duggan, et al. 8.12.62
A3444 |
| D.E. Osborn, et al. 12.2.52
A3434 | J. Barrera, et al. 11.25.62
A3435 | J. Barrera, et al. 11.25.62
A3436 | A.J. Goulet, et al. 8.8.61
A3437 | E.A. Radford, et al. 8.8.61
A3438 | H.F. Sanchez, et al. 11.16.59
A3439 | R.L. Franck, et al. 12.26.60
A3440 | M.E. Adams, et al. 8.22.60
A3441 | E.A. Casey, et al. 4.25.62
A3442 | E.S. Duggan, et al. 8.12.62
A3443 |
| H.F. Langley, et al. 10.18.62
A3436 | M.F. Fitzgerald, et al. 10.7.60
A3437 | M.F. Fitzgerald, et al. 10.7.60
A3438 | A.A. Corvino, et al. 8.23.62
A3439 | K.S. Griffin, et al. 12.2.60
A3440 | P.L. Snowball, et al. 8.23.59
A3441 | R.L. Franck, et al. 12.26.60
A3442 | M.E. Adams, et al. 8.22.60
A3443 | E.A. Casey, et al. 4.25.62
A3444 | E.S. Duggan, et al. 8.12.62
A3445 |
| J. Lewis, et al. 8.8.61
A3437 | C.R. Cimour, et al. 10.30.60
A3438 | M.W. Parsons, et al. 6.27.58
A3439 | P.L. Martin, et al. 7.2.59
A3440 | A.L. Gierms, et al. 11.23.59
A3441 | J.M. Petrella, et al. 8.13.61
A3442 | R.L. Franck, et al. 12.26.60
A3443 | M.E. Adams, et al. 8.22.60
A3444 | E.A. Casey, et al. 4.25.62
A3445 | E.S. Duggan, et al. 8.12.62
A3446 |
| M.A. Jacobson, et al. 7.7.60
A3438 | M.W. Parsons, et al. 6.27.58
A3439 | R.E. Orr, et al. 3.3.52
A3440 | R.E. Orr, et al. 3.3.52
A3441 | R.E. Morrill, Jr., et al. 5.3.61
A3442 | M. Petrella, et al. 11.10.62
A3443 | R.L. Franck, et al. 12.26.60
A3444 | M.E. Adams, et al. 8.22.60
A3445 | E.A. Casey, et al. 4.25.62
A3446 | E.S. Duggan, et al. 8.12.62
A3447 |
| State to R.L. 10.17.52
A3439 | M.W. Parsons, et al. 6.27.58
A3439 | State to Gen. Tele. Co. of Cal. 10.14.58
A3440 | State to Gen. Tele. Co. of Cal. 10.14.58
A3441 | State to Norman H. Sage, et al. 1.31.72
A3442 | State to E.L. Chavez, et al. 8.11.61
A3443 | R.L. Franck, et al. 12.26.60
A3444 | M.E. Adams, et al. 8.22.60
A3445 | E.A. Casey, et al. 4.25.62
A3446 | E.S. Duggan, et al. 8.12.62
A3447 |
| State to L.A. 6.10.74
A3440 | State to R.L. 10.17.52
A3439 | State to Gen. Tele. Co. of Cal. 10.14.58
A3440 | State to Gen. Tele. Co. of Cal. 10.14.58
A3441 | State to Norman H. Sage, et al. 1.31.72
A3442 | State to E.L. Chavez, et al. 8.11.61
A3443 | R.L. Franck, et al. 12.26.60
A3444 | M.E. Adams, et al. 8.22.60
A3445 | E.A. Casey, et al. 4.25.62
A3446 | E.S. Duggan, et al. 8.12.62
A3447 |

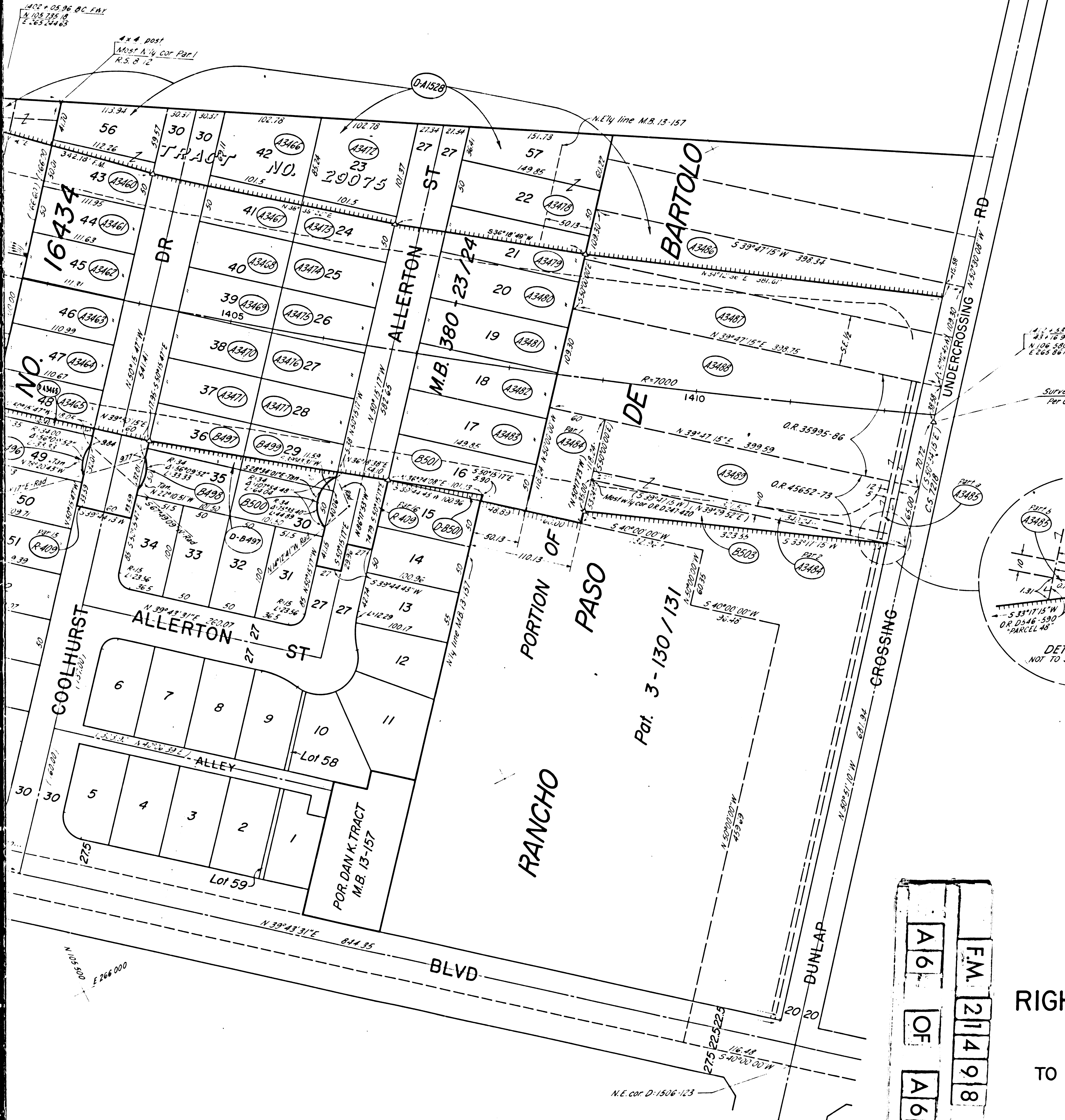
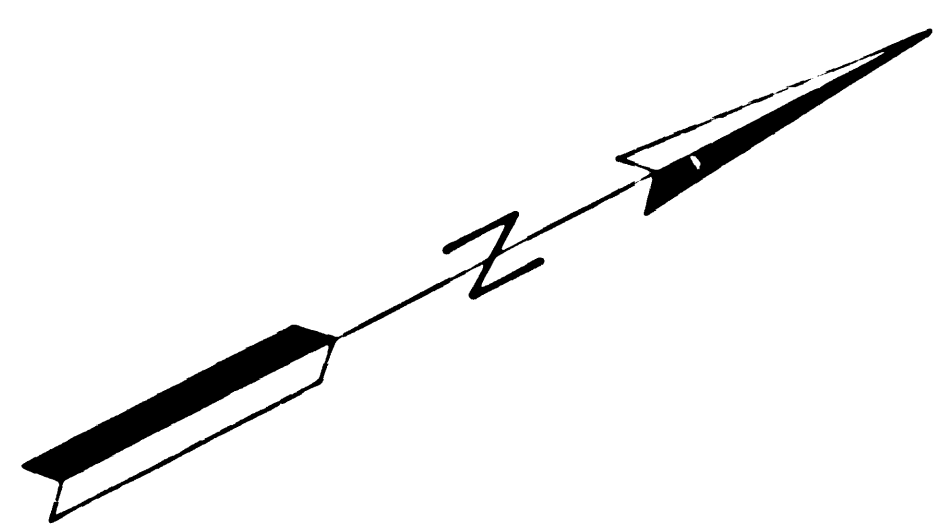
A5
 OF
 A6
 FM 2114 98

SAN GABRIEL RIVER

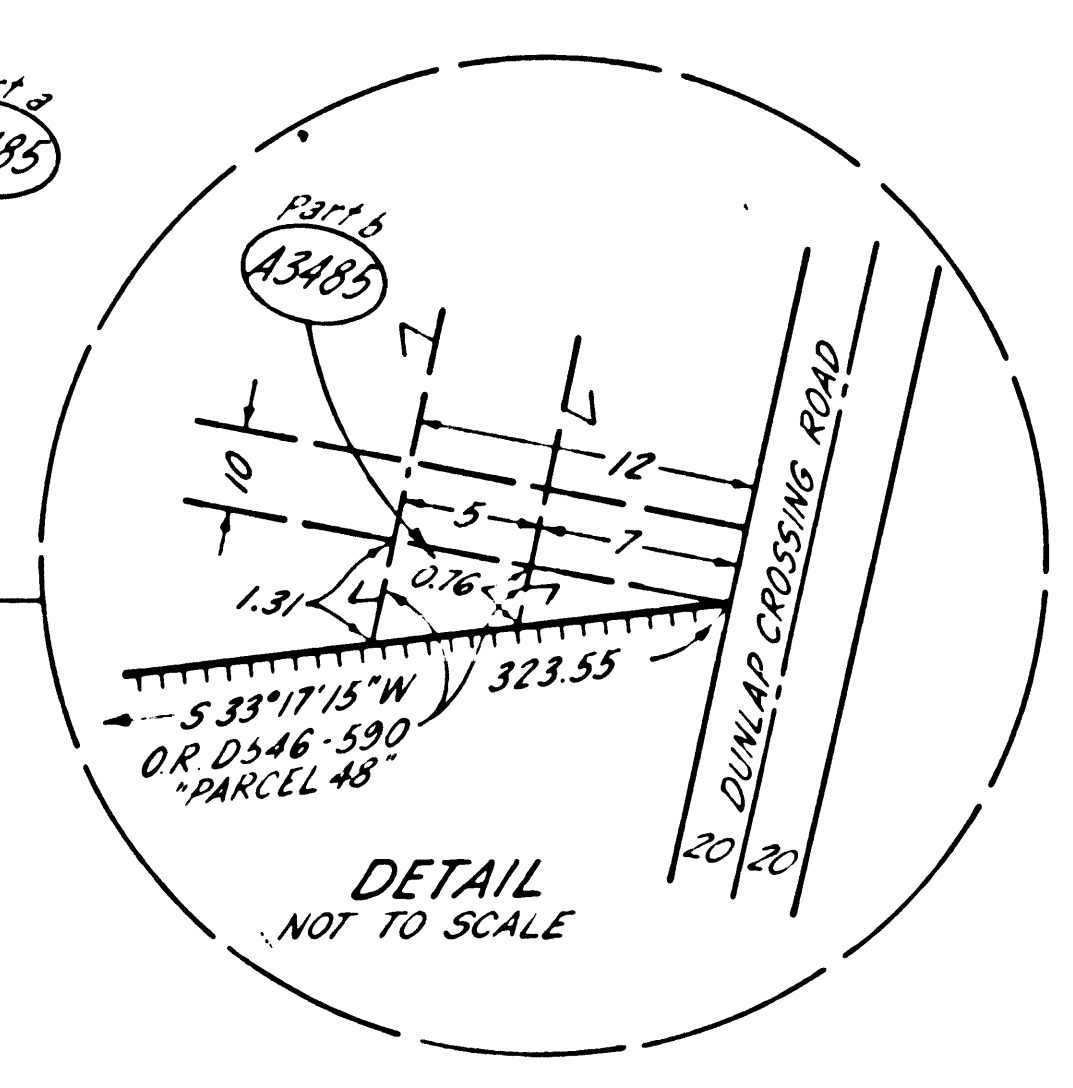
NO.

1910

159



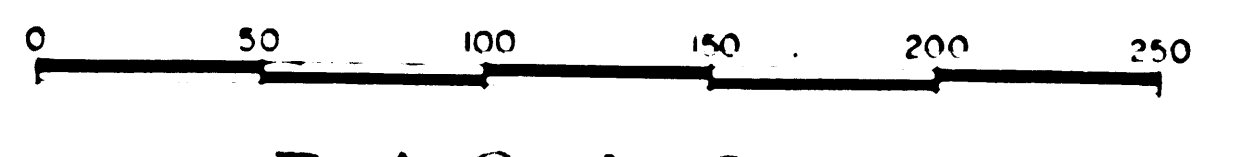
E 265 500
N 107 000



INTERSTATE
NOT TO BE TAKEN FROM DISTRICT OFFICE
COORDINATES SHOWN ARE FOR INTERNAL USE OF THE DIVISION OF HIGHWAYS AND ARE TO BE USED FOR REFERENCE ONLY

STATE OF CALIFORNIA
TRANSPORTATION AGENCY
DEPARTMENT OF PUBLIC WORKS
DIVISION OF HIGHWAYS
ROAD: 7-LA-605
(Old 7-LA-170-A)

RIGHT OF WAY RECORD MAP
RIVERA ROAD (PM 11.4)
TO DUNLAP CROSSING ROAD (PM 12.9)



FM 21498

F-1963

FM 21498
OF A6