

TRACT REGISTER OF ACQUISITION AFTER 1 JAN. 1943			
TRACT NO.	LAND OWNER	ACREAGE	REMARKS
C-307-P	ERNEST CARVER, et ux	0.02	Permit No. LA 1014 for fill area from 5-1-56
C-310-E	LAURA M. KINNE	0.08	Partial Easement for Flood Control & Channel Rectification purposes from 11-21-56

TRACT REGISTER OF ACQUISITION AFTER 1 JAN. 1943			
TRACT NO.	LAND OWNER	ACREAGE	REMARKS
C-306-P	EDWARD H. BURBANK, et ux	0.01	Permit No. LA 1009 for access road, work area, and fill area from 5-1-56
C-306-P	EDWARD H. BURBANK, et ux	0.04	
C-307-P	PETER J. LOGGMAN, et ux	0.15	1010 for fill area from 5-1-56
C-309-P	ORIN J. HALL, et ux	0.08	1011
C-311-P	OCIE M. HICKS, et ux	0.01	1012
C-312-P	HAROLD J. BLAISURE, et ux	0.04	1013

TRACT REGISTER OF ACQUISITION AFTER 1 JAN. 1943			
TRACT NO.	LAND OWNER	ACREAGE	REMARKS
C-302-E	J. P. LOUBET	1.70	Partial Easement for Flood Control & Channel Rectification purposes from 3-8-56
C-303-E	CONTINENTAL CAN COMPANY INC	1.97	
C-302-E	HELEN G. JONES	0.90	
C-303-E	CORNELIUS HEST, et ux	0.83	
C-304-E	MARGARET L. LAGIDE	0.88	
C-305-E	ROBERT W. MURDOCK, et ux	0.26	
C-306-E	EDWARD H. BURBANK, et ux	1.01	
C-307-E	PETER J. LOGGMAN, et ux	0.76	
C-308-E	P. J. LOGGMAN, et ux	0.07	
C-309-E	ORIN J. HALL	0.35	
C-310-E	EARL B. TNER, et ux	0.06	
C-311-E	OCIE M. HICKS, et ux	0.04	
C-312-E	HAROLD J. BLAISURE, et ux	0.21	
C-313-E	FRANK J. LOGGMAN, et ux	0.24	
C-314-E	FLOOD CONTROL DISTRICT	0.38	

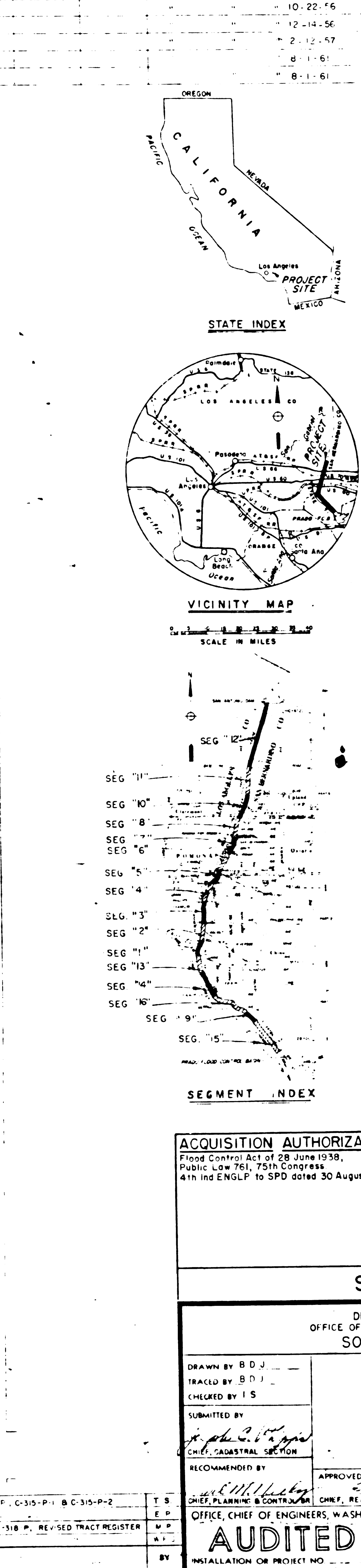
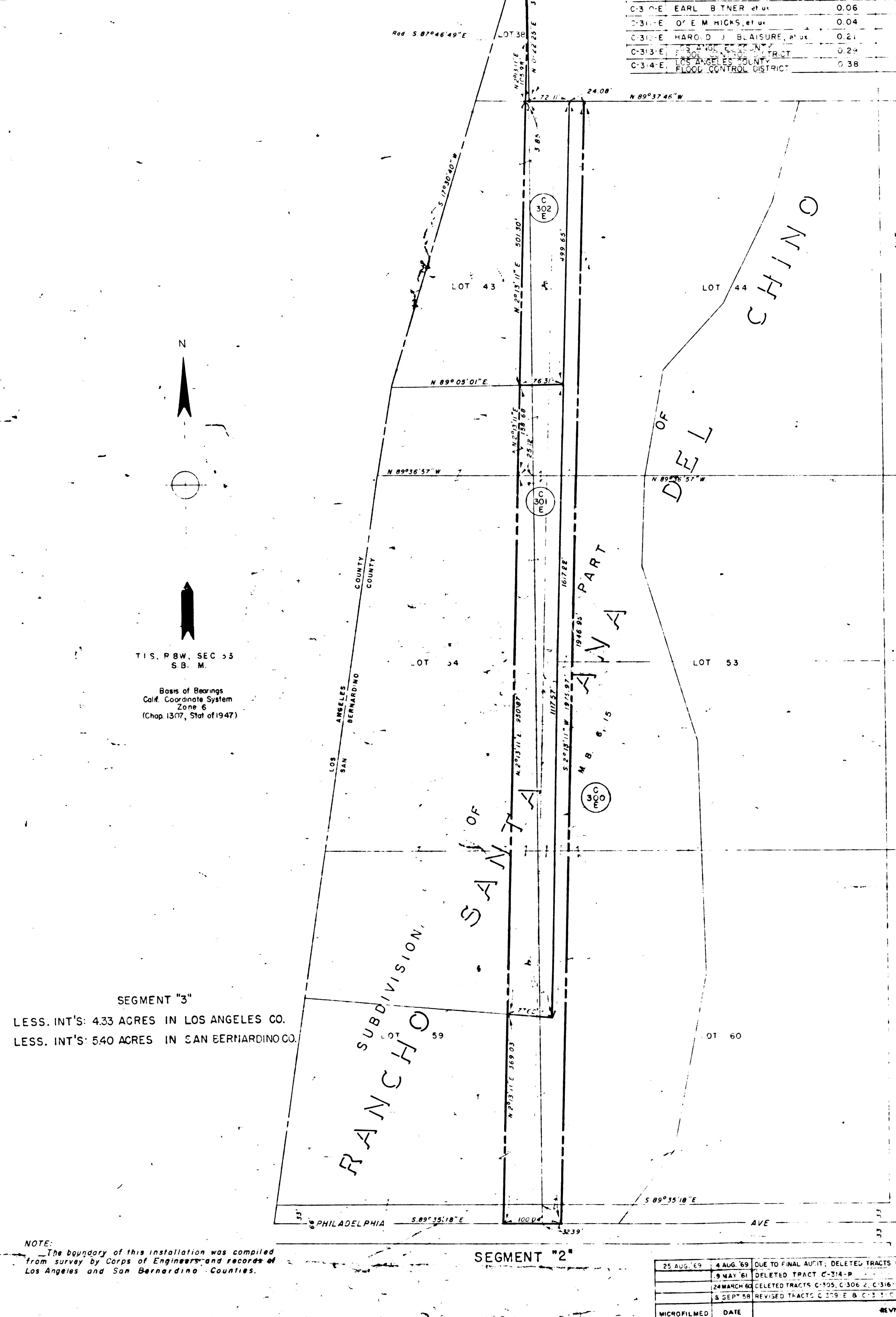
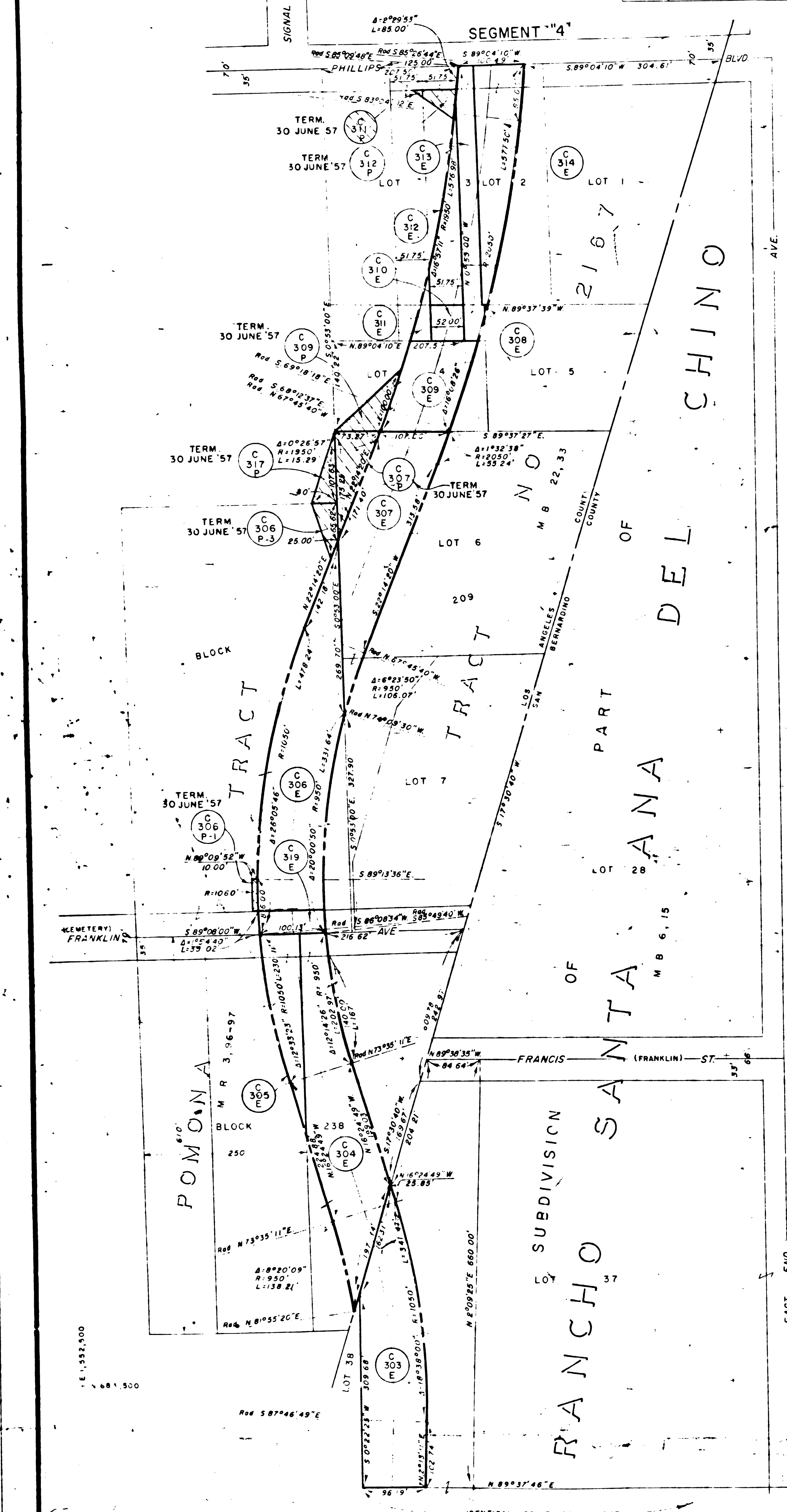
FINAL  
**PROJECT MAP**  
DEPT OF THE ARMY  
USING SERVICE CORPS OF ENGINEERS  
STATE CALIFORNIA  
COUNTY LOS ANGELES & SAN BERNARDINO  
DIVISION SOUTH PACIFIC  
DISTRICT LOS ANGELES  
ARMY AREA SIXTH

LOCATION OF PROJECT  
30 MILES E. OF LOS ANGELES  
MILES OF  
TRANSPORTATION FACILITIES  
RAILROADS A.T. & S.F., S.P., U.P. & P.E.  
STATE ROADS 71  
FEDERAL ROADS 66, 70, 99, & 60  
AIR LINES

ACQUISITION  
TOTAL ACRES ACQUIRED  
ACRES FEE  
ACRES TRANSFERRED  
ACRES LEASED  
ACRES LESSER INTERESTS

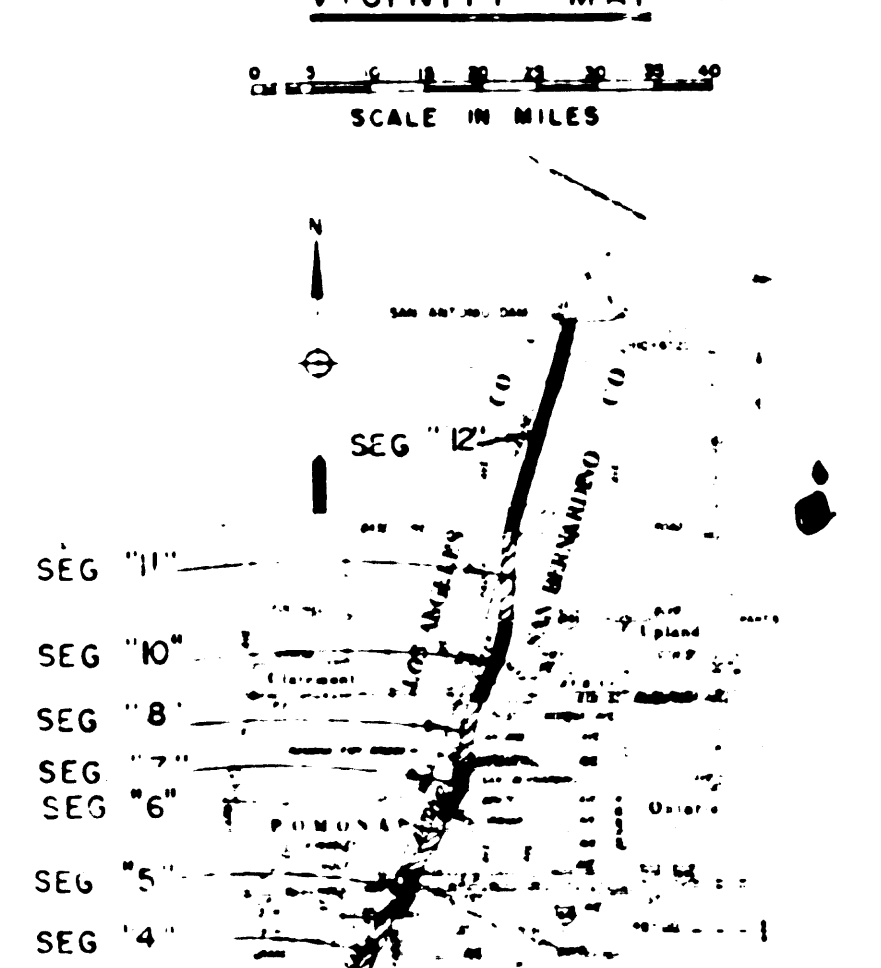
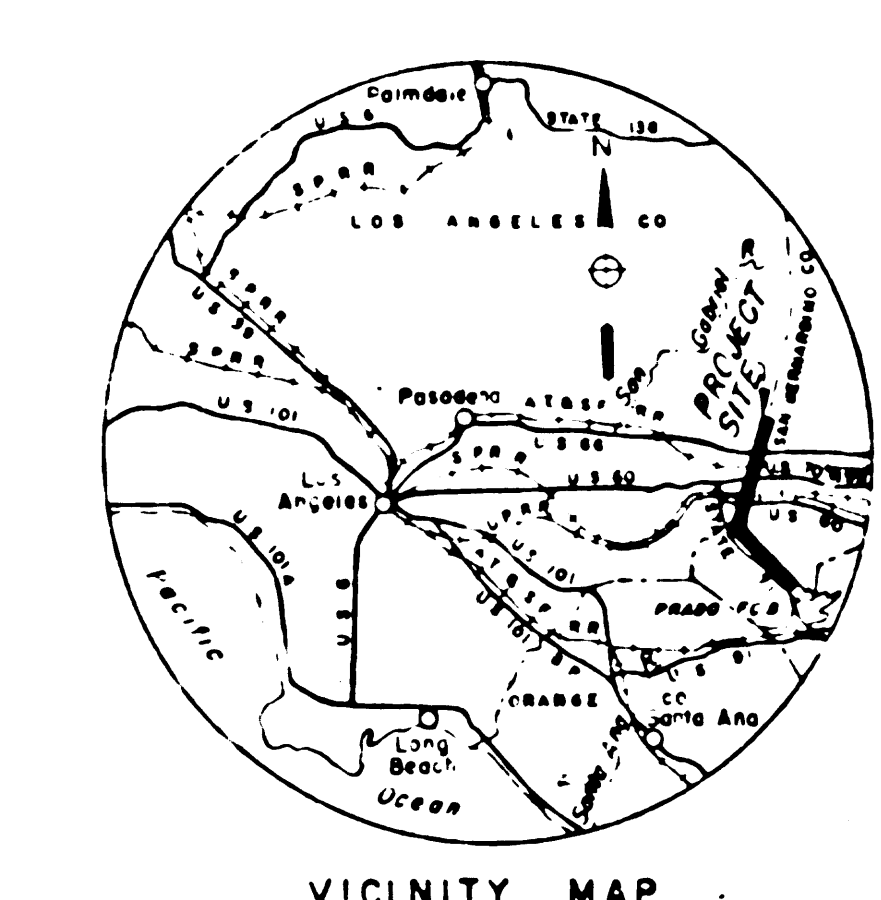
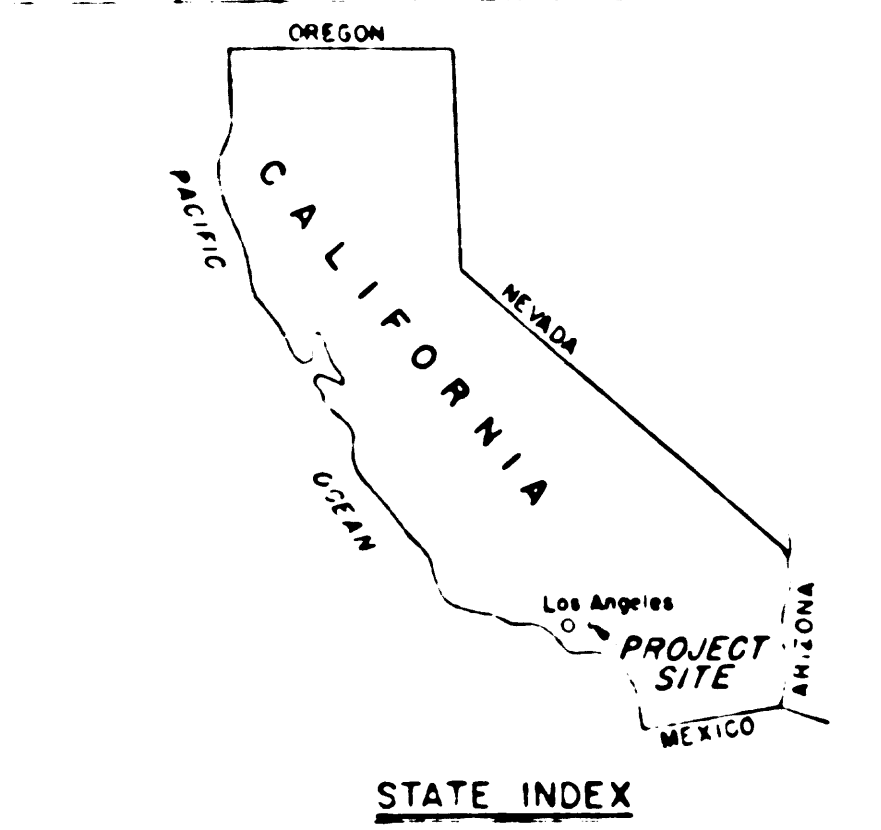
DISPOSAL  
TOTAL ACRES DISPOSED OF  
ACRES SOLD  
ACRES TRANSFERRED  
ACRES LEASES TERMINATED  
ACRES LESS INT'S. TERMINATED  
ACRES REASSIGNED  
ACRES TO

LEGEND  
EXCEPT FOR THE SPECIAL SYMBOLS SHOWN BELOW, MAP SYMBOLS ARE STANDARD IN ARMY MAP SERVICE TECHNICAL MANUAL NO. 33  
RESERVATION LINE  
RESERVATION LINE (Aerial Survey)  
TRACT BOUNDARY LINE  
TRACT NUMBER  
AVIGATION EASEMENT  
CONTOUR LINE  
DISPOSAL



SEGMENT "3"  
LESS INT'S: 4.33 ACRES IN LOS ANGELES CO.  
LESS INT'S: 540 ACRES IN SAN BERNARDINO CO.

NOTE: The boundary of this installation was compiled from survey by Corps of Engineers and records of Los Angeles and San Bernardino Counties.



ACQUISITION AUTHORIZATION  
Flood Control Act of 28 June 1938,  
Public Law 761, 75th Congress,  
as amended by S.P.D. dated 30 August 1955.

DEPARTMENT OF THE ARMY  
OFFICE OF THE LOS ANGELES DISTRICT ENGINEER  
SOUTH PACIFIC DIVISION  
REAL ESTATE  
SAN ANTONIO & CHINO  
CREEKS CHANNEL  
DRAWN BY B.D.J.  
CHECKED BY B.D.J.  
SUBMITTED BY  
RECOMMENDED BY  
APPROVED BY  
DATE 9 OCT 1956  
SCALE IN FEET  
AUDITED  
LI-2-0004

F.M. 21522-1



TRACT REGISTER OF ACQUISITION AFTER 1 JAN. 1943

TRACT NO	LAND OWNER	ACREAGE	EASMT	REMARKS
D-429-E	ESTELLE EMILIE STENSGAARD, et al	0.12		Perpetual Easement for Flood Control and Channel Rectification Purposes from 5-1-56

TRACT REGISTER OF ACQUISITION AFTER 1 JAN 1943

TRACT NO	LAND OWNER	ACREAGE	EASMT	PERMIT	REMARKS
D-414-E	CITY OF POMONA	0.01			Perpetual Easement for Flood Control and Channel Rectification Purposes from 5-1-56
D-415-E	WINFRED L. MATHEWS, et al	0.02			Perpetual Easement for Flood Control and Channel Rectification Purposes from 5-1-56
D-416-E	BELLE EMMA GEMMELL	1.39			2-16-59
D-417-E	COUNTY OF SAN BERNARDINO	1.85			7-17-61
D-418-E	JOHN BERNARDINO COUNTY	0.32			7-17-61
D-419-E	JOHN BERNARDINO COUNTY	0.04			7-17-61
D-420-E	BURTON V. KEAN, et al	0.07			5-22-59
D-421-E	ANNA O. GREEN	0.02			5-16-57
D-400-P	DANIEL EDWARD DAVISSON, et ux	0.02		02	Permit No LA-115 for fill area from 5-1-56
D-402-P	ALAD ALUMINUM LADDER CORP	0.01		01	LA-101E
D-403-P	Estate of MARTHA H. ROBERTS	0.01		01	LA-1017
D-404-P	PERRY OTIS FORSYTH, et ux	0.01		01	LA-1018
D-405-P	LILA B. LARSEN, et al	0.33		03	Permit No LA-1139 for access road and work area from 5-1-56
D-405-P2	LILA B. LARSEN, et al	0.36		06	Permit No LA-1020 for fill area from 5-1-56
D-405-P3	LILA B. LARSEN, et al	0.26		06	Permit No LA-1021 for access road and work area from 5-1-56
D-407-P1	JOSEPH C. BROWN, et ux	0.59		09	Permit No LA-1022 for fill area from 5-1-56
D-407-P2	JOSEPH C. BROWN, et ux	0.07		07	Permit No LA-1023 for fill area from 5-1-56
D-416-F	BELLE E. GEMMELL	0.87		07	Permit No LA-1723 for fill area from 5-1-56
D-422-P	JAMES H. BLAKE, JR	0.01		01	Permit No A-1024 for access road and work area from 5-1-56
D-423-P	HARRY HOLLINGSWORTH, et ux	0.17		17	Permit No LA-1025 for fill area from 5-1-56
D-426-E	STATE OF CALIFORNIA	0.03			Perpetual Easement for Flood Control and Channel Rectification Purposes from 4-4-60

TRACT REGISTER OF ACQUISITION AFTER 1 JAN 1943

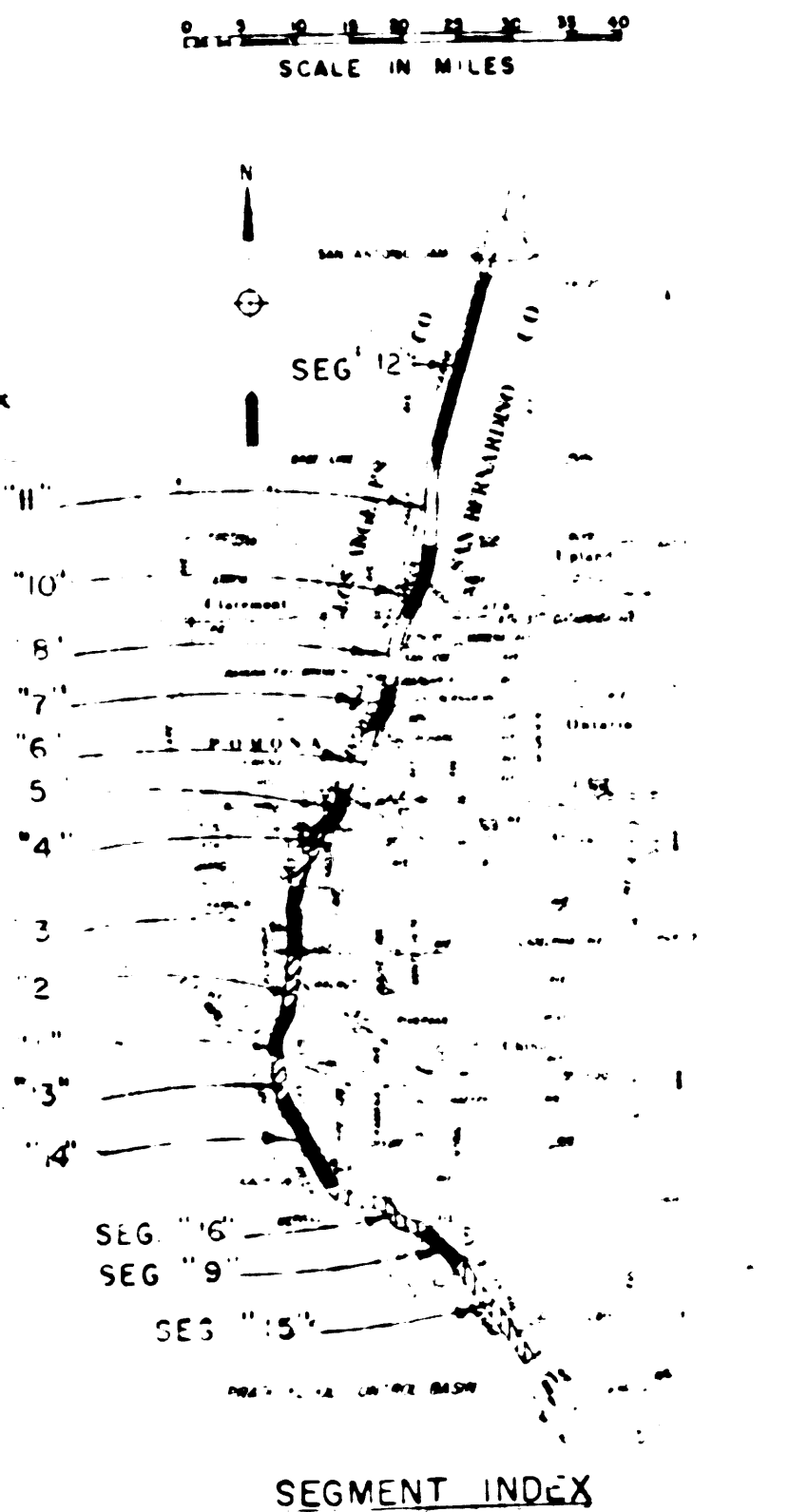
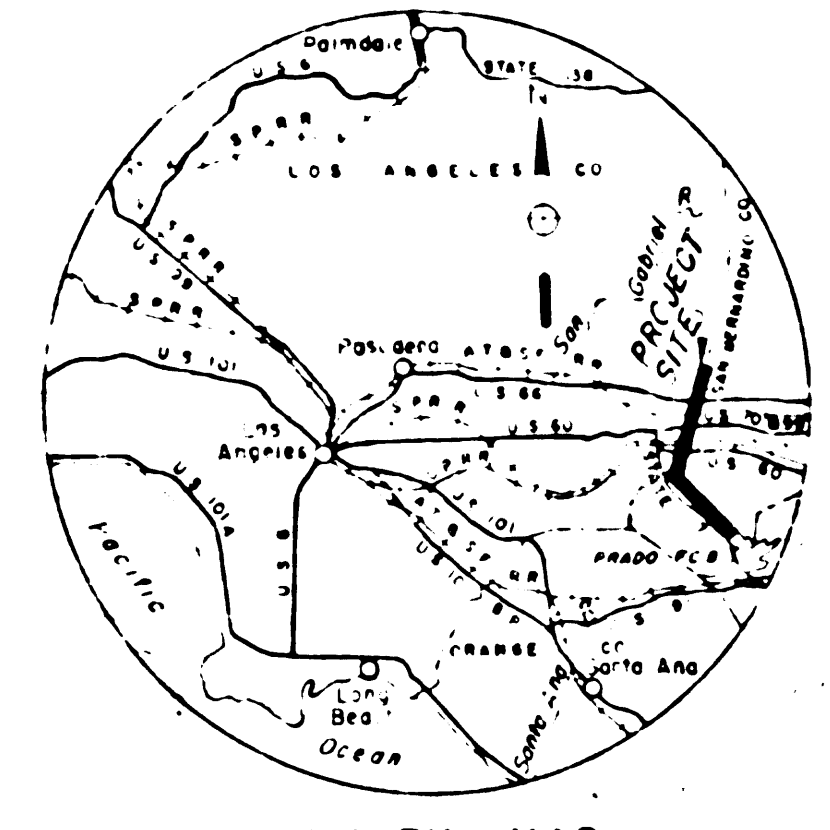
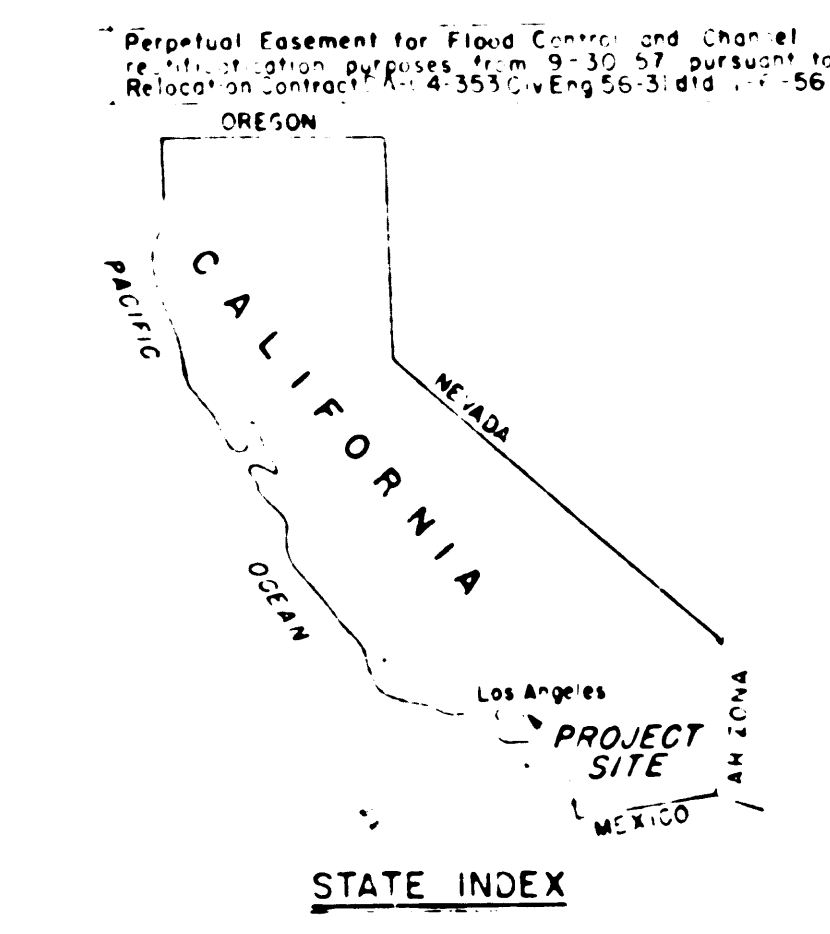
TRACT NO	LAND OWNER	ACREAGE	EASMT	REMARKS
D-400-E	DANIEL EDWARD DAVISSON, et ux	0.16		Perpetual Easement for Flood Control and Channel Rectification Purposes from 5-1-56
D-401-E	ANDREW JOHNSTON, et ux	0.02		Perpetual Easement for Flood Control and Channel Rectification Purposes from 5-1-56
D-402-E	ALAD ALUMINUM LADDER CORP	0.01		11-27-56
D-403-E	Estate of MARTHA HARRIETTERBERTS	0.01		12-11-54
D-404-E	PERRY OTIS FORSYTH, et ux	0.01		10-24-56
D-405-E	LILA B. LARSEN, et al	2.94		12-27-56
D-406-E	J. CHARLES HAYNES, et ux	1.44		2-16-59
D-407-E	JOSEPH C. BROWN, et ux	1.42		2-18-57
D-408-E	LOUIS FERRELL, et ux	0.65		11-29-56
D-408-E2	LOUIS FERRELL, et ux	0.73		
D-409-E	CLARENCE F. PERRY, et ux	0.49		10-24-56
D-409-E	CLARENCE F. PERRY, et ux	0.08		3-8-57
D-410-E	EARL A. SERRY, et ux	0.08		11-26-56
D-411-E	PAUL L. AVERE, et ux	0.75		
D-412-E	HOWARD P. HILLIARD, et ux	0.02		
D-413-E	CITY OF POMONA	0.36		

FINAL PROJECT MAP

DEPT OF THE ARMY  
USING SERVICE CORPS OF ENGINEERS  
STATE CALIFORNIA  
COUNTY LOS ANGELES & SAN BERNARDINO  
DIVISION SOUTH PACIFIC  
DISTRICT LOS ANGELES  
ARMY AREA SIXTH

LOCATION OF PROJECT  
30 MILES E. OF LOS ANGELES  
MILES OF

TRANSPORTATION FACILITIES  
RAILROADS AT 8 SF, SP, UP & PE.  
STATE ROADS 71  
FEDERAL ROADS 66, 70, 99, & 60  
AIR LINES



ACQUISITION

TOTAL ACRES ACQUIRED

ACRES FEE

ACRES TRANSFERRED

ACRES LEASED

ACRES LESSER INTERESTS SEE SHEET

DISPOSAL

TOTAL ACRES DISPOSED OF

ACRES SOLD

ACRES TRANSFERRED

ACRES LEASES TERMINATED SEE SHEET

ACRES LESS INTS. TERMINATED

ACRES REASSIGNED

ACRES TO

LEGEND

EXCEPT FOR THE SPECIAL SYMBOLS SHOWN BELOW, MAP SYMBOLS ARE STANDARD IN ARMY MAP SERVICE TECHNICAL MANUAL NO 93

RESERVATION LINE

RESERVATION LINE (Aerial Survey)

TRACT BOUNDARY LINE

TRACT NUMBER

AVIGATION EASEMENT

CONTOUR LINE

DISPOSAL

ACQUISITION AUTHORIZATION

Flood Control Act of 29 June 1938, Public Law 761, 75th Congress, 4th Intersession, to SPC, dated 30 August 1955.

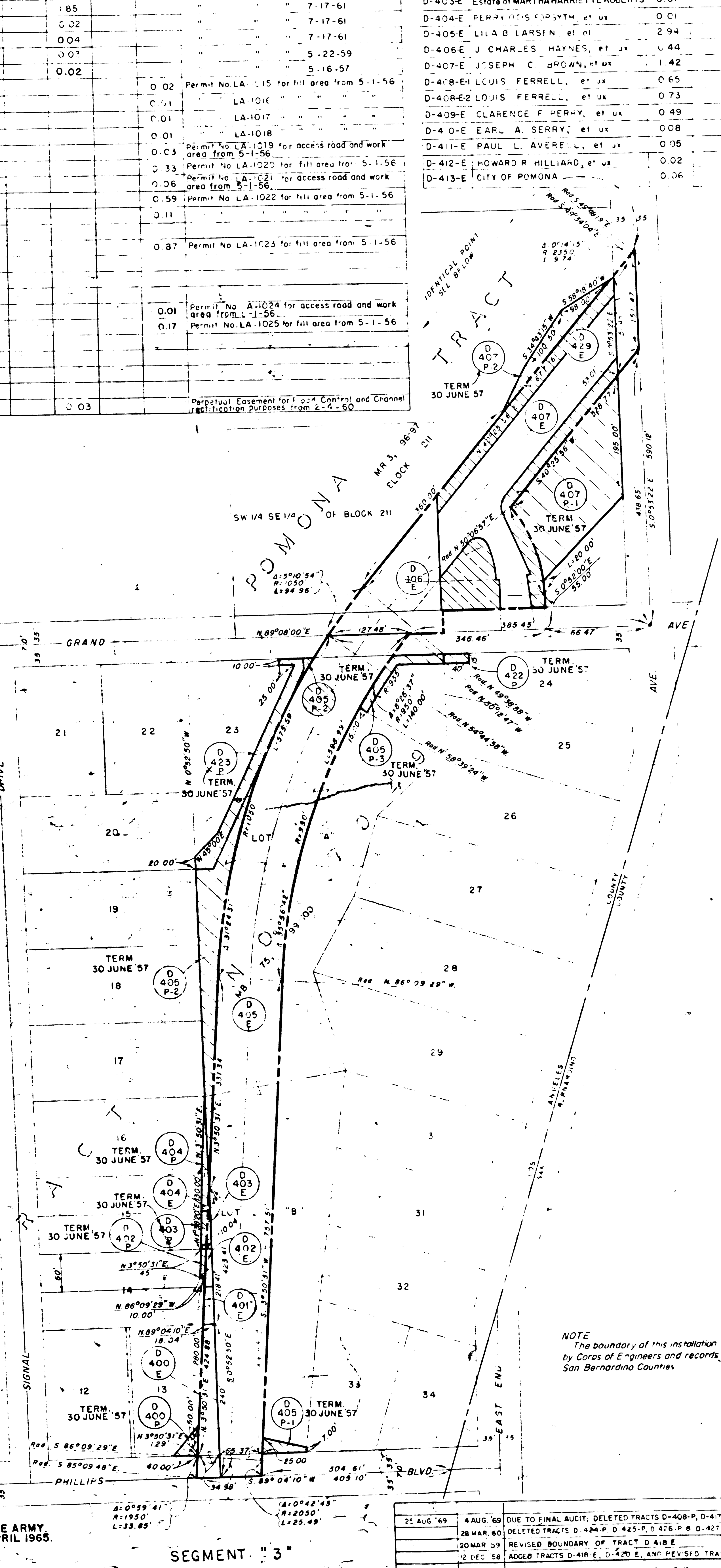
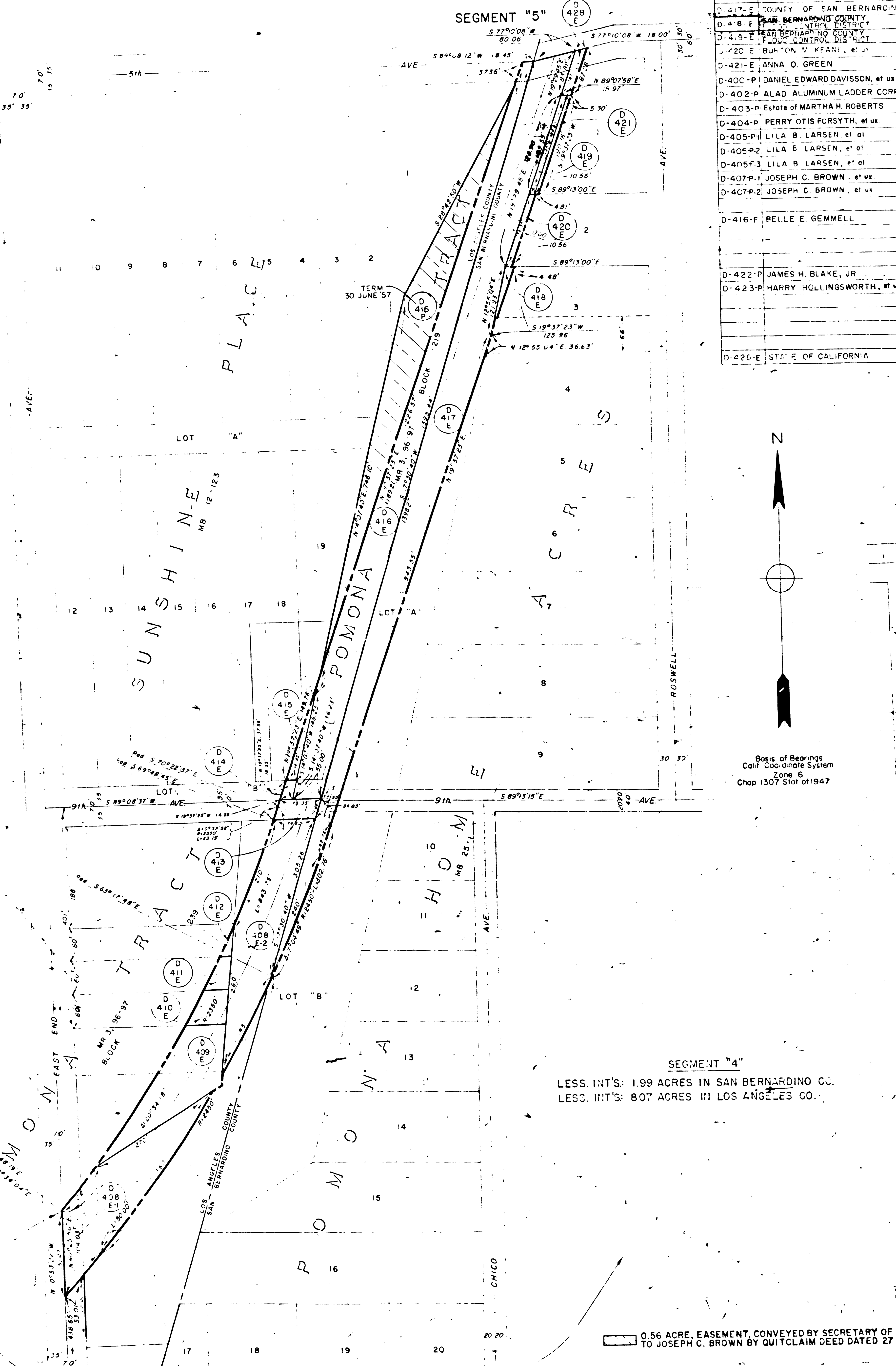
SEGMENT "4"

DEPARTMENT OF THE ARMY  
OFFICE OF THE LOS ANGELES DISTRICT ENGINEER  
SOUTH PACIFIC DIVISION

REAL ESTATE  
SAN ANTONIO & CHINO  
CREEKS CHANNEL

DRAWN BY L. J. M. M.  
CHECKED BY I. S.  
SUBMITTED BY  
RECOMMENDED BY  
APPROVED BY  
DATE 8 OCT 1956

OFFICE CHIEF OF ENGINEERS WASHINGTON 25 D. C.  
OFFICE APPROVED  
26 MAY 1970  
AUDITED  
LI-2-0004



F.M. 21522-2



TRACT REGISTER OF ACQUISITION AFTER 1 JAN. 1943

Table with columns: TRACT NO, LAND OWNER, LEASED EASEMENT, ACREAGE, PERMIT, REMARKS. Includes entries for Max Schulmann, C.C. Castleberry, etc.

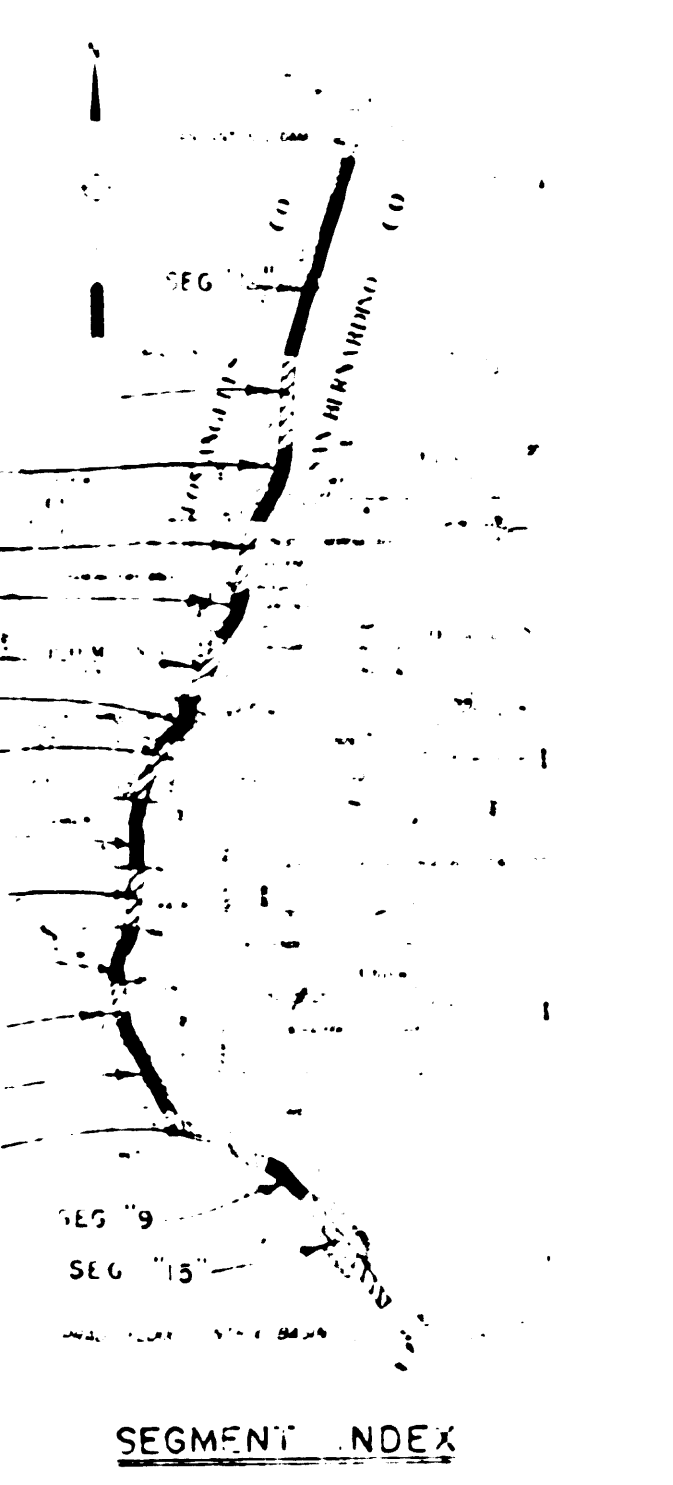
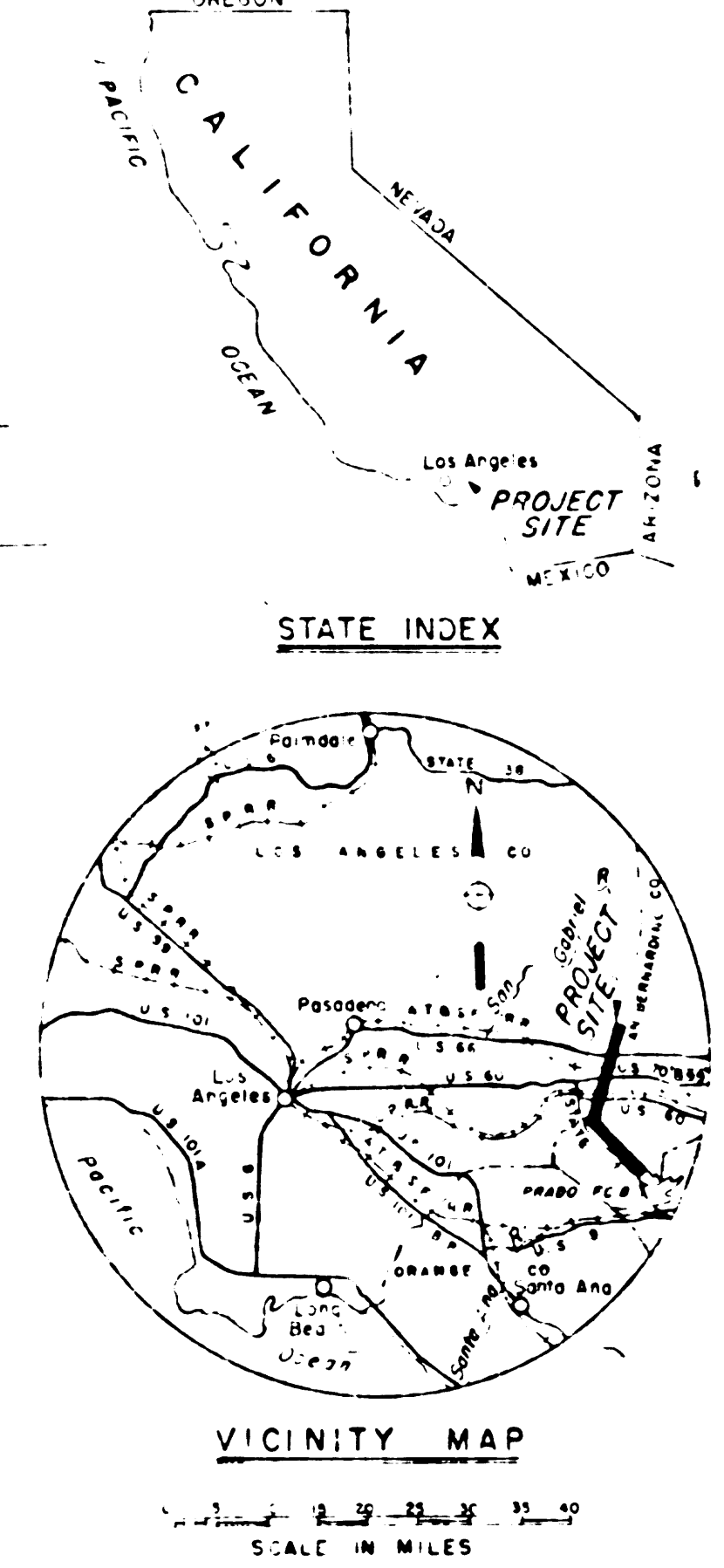
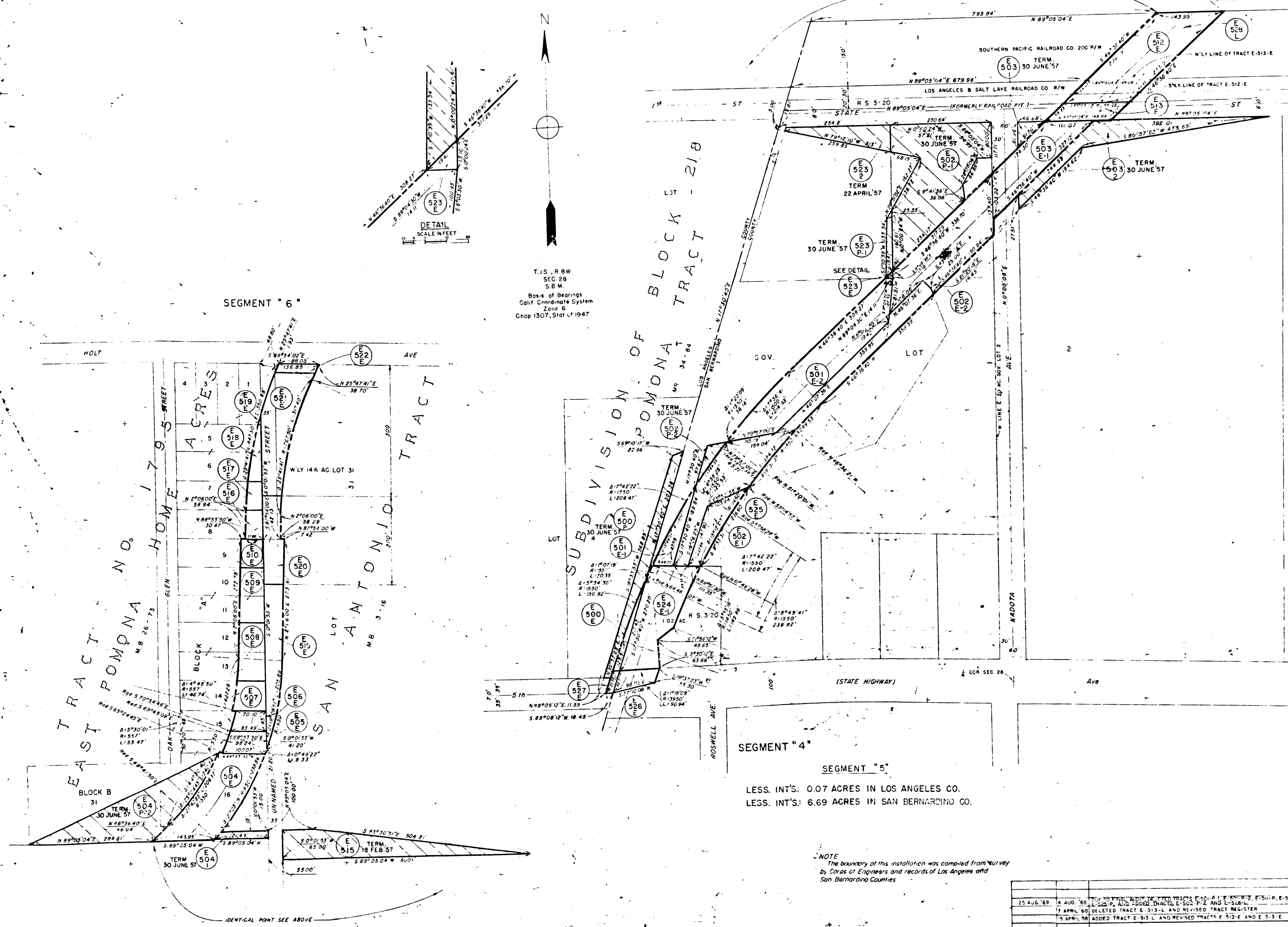
TRACT REGISTER OF ACQUISITION AFTER 1 JAN. 1943

Table with columns: TRACT NO, LAND OWNER, LEASED EASEMENT, ACREAGE, PERMIT, REMARKS. Includes entries for Roy Maxwell, Carl A. North, etc.

TRACT REGISTER OF ACQUISITION AFTER 1 JAN. 1943

Table with columns: TRACT NO, LAND OWNER, LEASED EASEMENT, ACREAGE, PERMIT, REMARKS. Includes entries for Anna O. Green, Elizabeth Hugues, etc.

FINAL PROJECT MAP
DEPT OF THE ARMY
USING SERVICE, CORPS OF ENGINEERS
STATE CALIFORNIA
COUNTY LOS ANGELES & SAN BERNARDINO
DIVISION SOUTH PACIFIC
DISTRICT LOS ANGELES
ARMY AREA SIXTH
LOCATION OF PROJECT
30 MILES E. OF LOS ANGELES
MILES OF
TRANSPORTATION FACILITIES
RAILROADS AT B S F, SP, UP & P E.
STATE ROADS 71
FEDERAL ROADS 66, 70, 99, & 60
AIR LINES
ACQUISITION
TOTAL ACRES ACQUIRED
ACRES FEE
ACRES TRANSFERRED
ACRES LEASED
ACRES LESSER INTERESTS
DISPOSAL
TOTAL ACRES DISPOSED OF
ACRES SOLD
ACRES TRANSFERRED
ACRES LEASES TERMINATED
ACRES LESS INT'S TERMINATED
ACRES REASSIGNED
ACRES TO
LEGEND
EXCEPT FOR THE SPECIAL SYMBOLS SHOWN BELOW MAP SYMBOLS ARE STANDARD IN ARMY MAP SERVICE TECHNICAL MANUAL NO. 21



ACQUISITION AUTHORIZATION
Floor Control Act of 28 June 1938.
Public Law 751, 75th Congress.
4th Ind ENGLP to SPD dated 30 Aug. 1950.

SEGMENT "5"
DEPARTMENT OF THE ARMY
OFFICE OF THE LOS ANGELES DISTRICT ENGINEER
SOUTH PACIFIC DIVISION

REAL ESTATE
SAN ANTONIO & CHINO
CREKS CHANNEL

AUDITED
DATE APPROVED
26 MAY 1970
LI-2-0004

SEGMENT "4"
SEGMENT "5"
LESS. INT'S: 0.07 ACRES IN LOS ANGELES CO.
LESS. INT'S: 6.69 ACRES IN SAN BERNARDINO CO.

NOTE
The boundary of this installation was compiled from survey by Corps of Engineers and records of Los Angeles and San Bernardino Counties

F.M. 21522-3



TRACT NO	LAND OWNER	ACREAGE		REMARKS
		LEASED	EASEMENT	
K-1100-E MOUNTAIN VIEW LAND COMPANY			9.24	
K-1100-1 MOUNTAIN VIEW WATER COMPANY		0.40		
K-1100-2 MOUNTAIN VIEW WATER COMPANY		1.13		
K-1101-E SAN BERNARDINO COUNTY			0.003	
K-1102 ALBERT E. MOSS, et al		0.04		
K-1103 DEWEY M. CABLE		0.47		
K-1104-E CITY OF POMONA			0.003	
K-1105-E Estate of GEORGE FERGUSON			0.02	

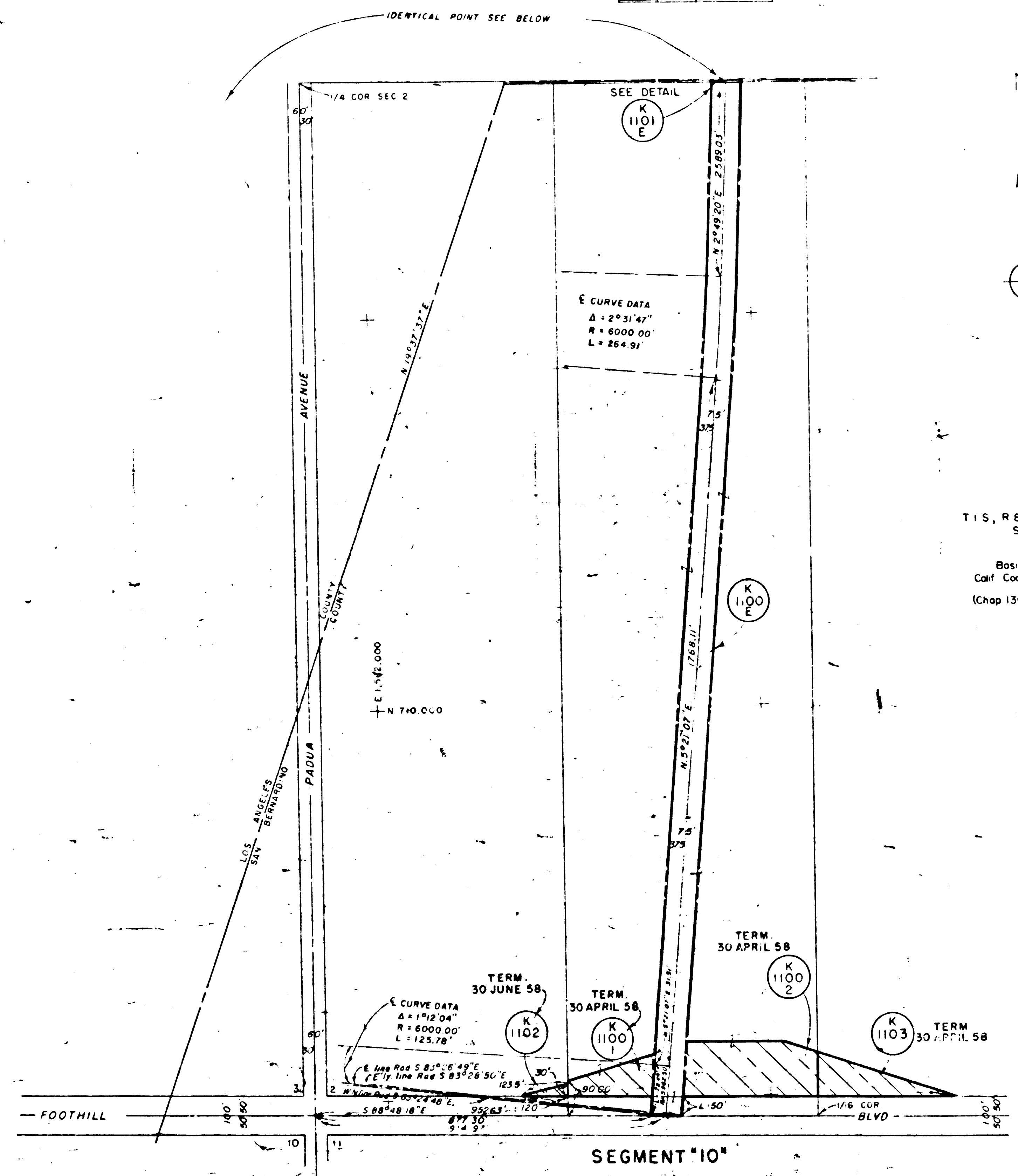
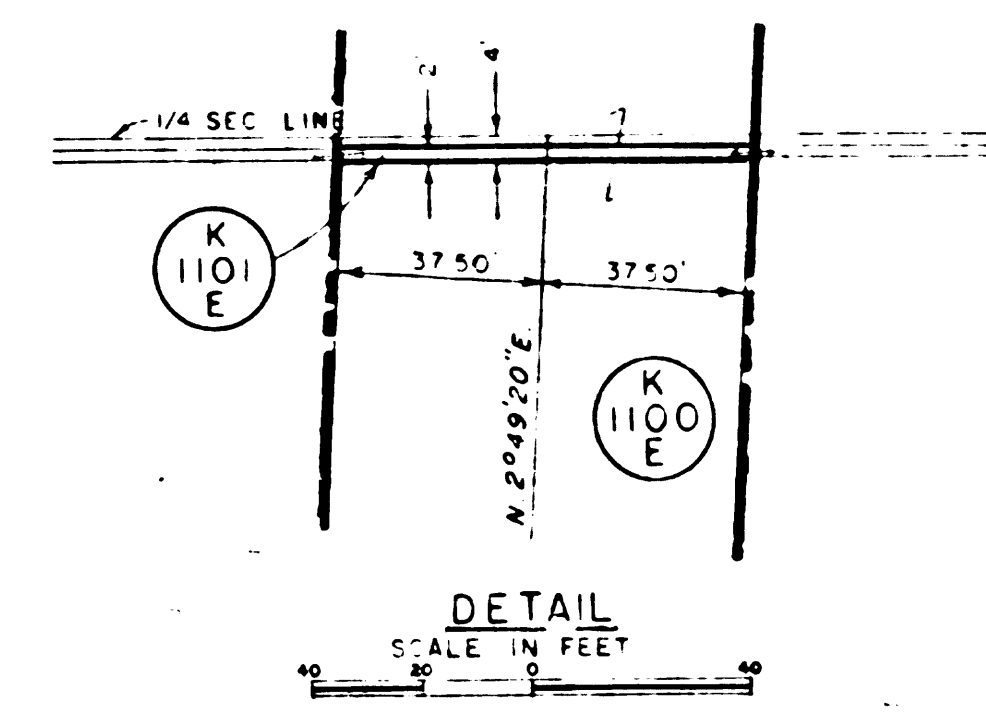
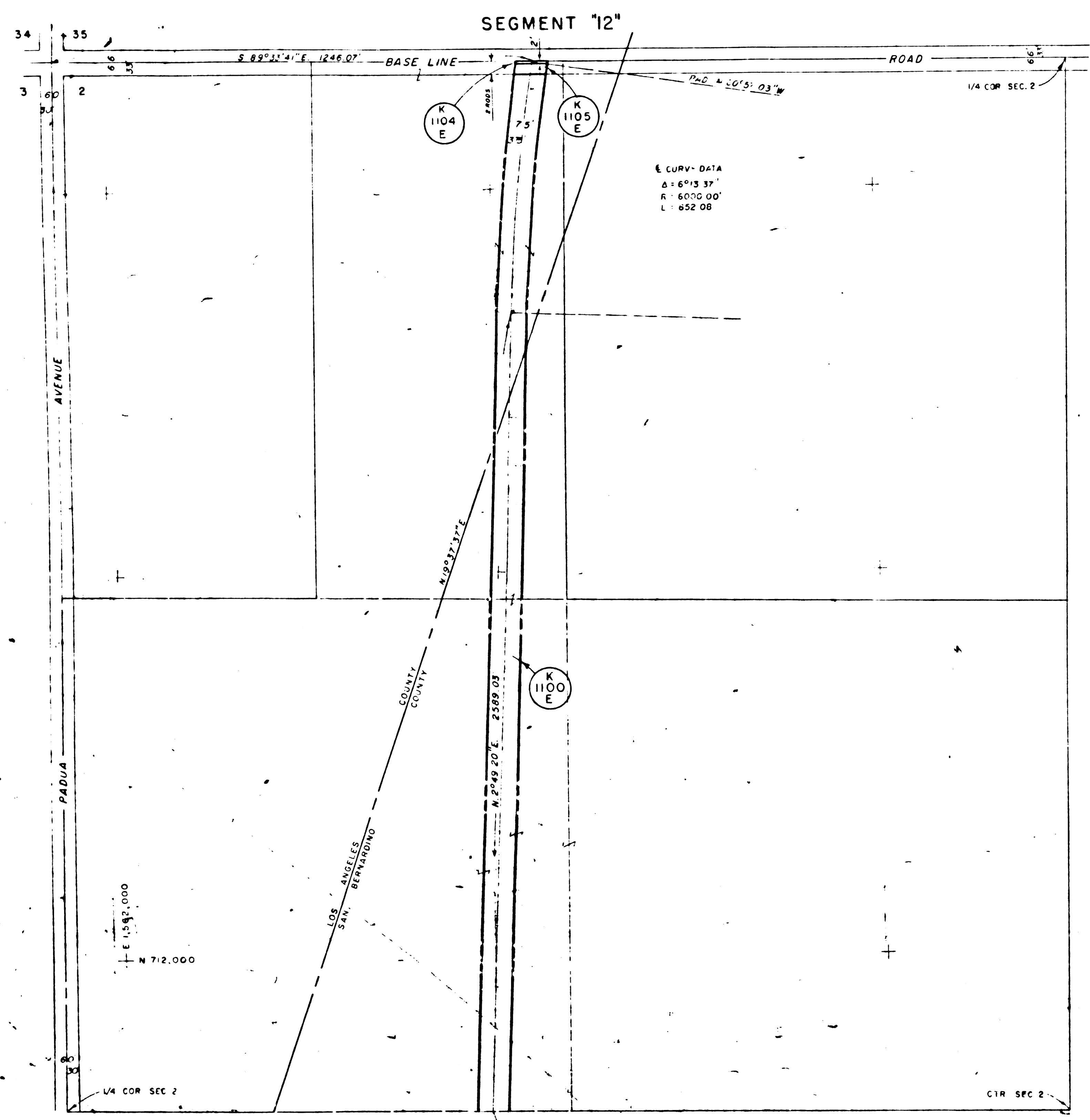
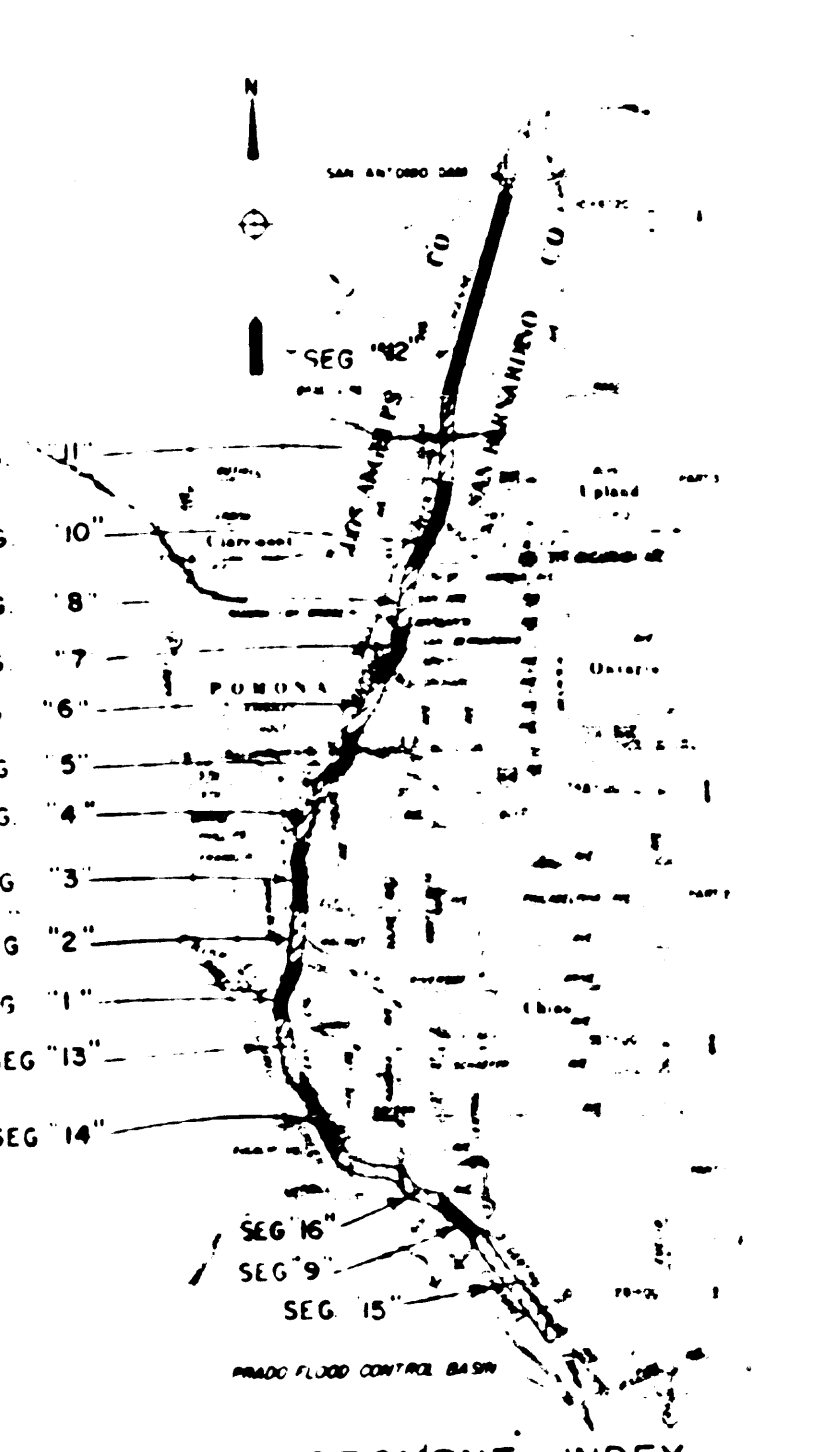
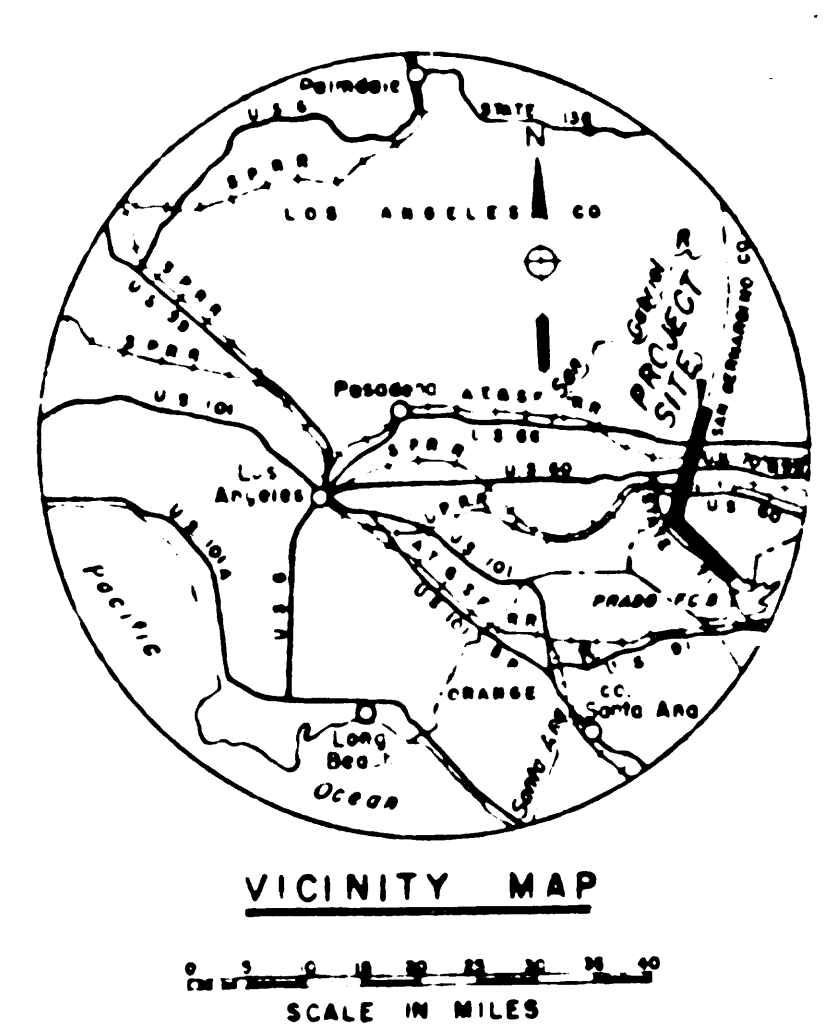
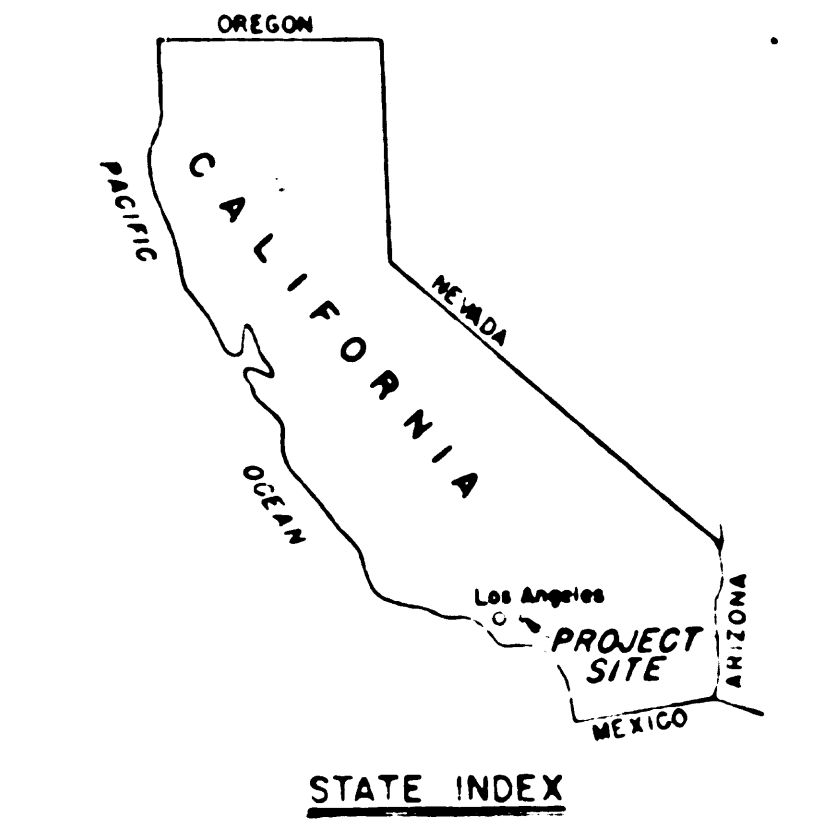
FINAL  
**PROJECT MAP**  
DEPT. OF THE ARMY  
USING SERVICE, CORPS OF ENGINEERS  
STATE CALIFORNIA  
COUNTY LOS ANGELES & SAN BERNARDINO  
DIVISION SOUTH PACIFIC  
DISTRICT LOS ANGELES  
ARMY AREA SIXTH

LOCATION OF PROJECT  
30 MILES E. OF LOS ANGELES  
MILES OF  
TRANSPORTATION FACILITIES  
RAILROADS A.T. & S.F., S.P., U.P. & P.E.  
STATE ROADS 71  
FEDERAL ROADS 66, 70, 99, & 60  
AIR LINES

ACQUISITION  
TOTAL ACRES ACQUIRED  
ACRES FEE  
ACRES TRANSFERRED  
ACRES LEASED  
ACRES LESSER INTERESTS

DISPOSAL  
TOTAL ACRES DISPOSED OF  
ACRES SOLD  
ACRES TRANSFERRED  
ACRES LEASES TERMINATED  
ACRES LESS INT'S. TERMINATED  
ACRES REASSIGNED  
ACRES TO

LEGEND  
EXCEPT FOR THE SPECIAL SYMBOLS SHOWN BELOW, MAP SYMBOLS ARE STANDARD IN ARMY MAP SERVICE TECHNICAL MANUAL NO. 93  
RESERVATION LINE  
RESERVATION LINE (Actual Survey)  
TRACT BOUNDARY LINE  
TRACT NUMBER  
AVIGATION EASEMENT  
CONTOUR LINE  
DISPOSAL



SEGMENT 11  
LESS INT'S: 1.50 ACRES IN LOS ANGELES CO.  
LESS INT'S: 7.80 ACRES IN SAN BERNARDINO CO.

NOTE  
The boundary of this installation was compiled from survey by Corps of Engineers, records of Los Angeles & San Bernardino Counties and Bureau of Land Management, etc.

MAPPING OF LAND DEPICTED ON THIS SHEET WAS PERFORMED BY ROBERT E. BORING UNDER PURCHASE ORDER NO 57-549

NO.	DATE	REVISIONS
1	25 AUG 69	4 AUG 69 DUE TO FINAL AUDIT
2	13 APRIL 60	REVISED TRACT REGISTER

ACQUISITION AUTHORIZATION  
Flood Control Act of 28 June 1938, Public Law 761, 75th Congress, 4th Ind. ENLP to SPD dated 30 Aug. 1955.

SEGMENT 11  
DEPARTMENT OF THE ARMY  
OFFICE OF THE LOS ANGELES DISTRICT ENGINEER  
SOUTH PACIFIC DIVISION  
REAL ESTATE  
**SAN ANTONIO & CHINO CREEKS CHANNEL**  
DRAWN BY PEB  
TRACED BY REB  
CHECKED BY I.S.  
SUBMITTED BY  
APPROVED BY  
DATE 19 NOV 1956  
OFFICE, CHIEF OF ENGINEERS, WASHINGTON 25, D. C.  
OFFICE APPROVED  
26 MAY 1970  
**AUDITED** LI-2-0004  
SCALE IN FEET  
SHEET 11 OF 16 DRAWING NO. 611-FP-19

F.M. 21522-4



