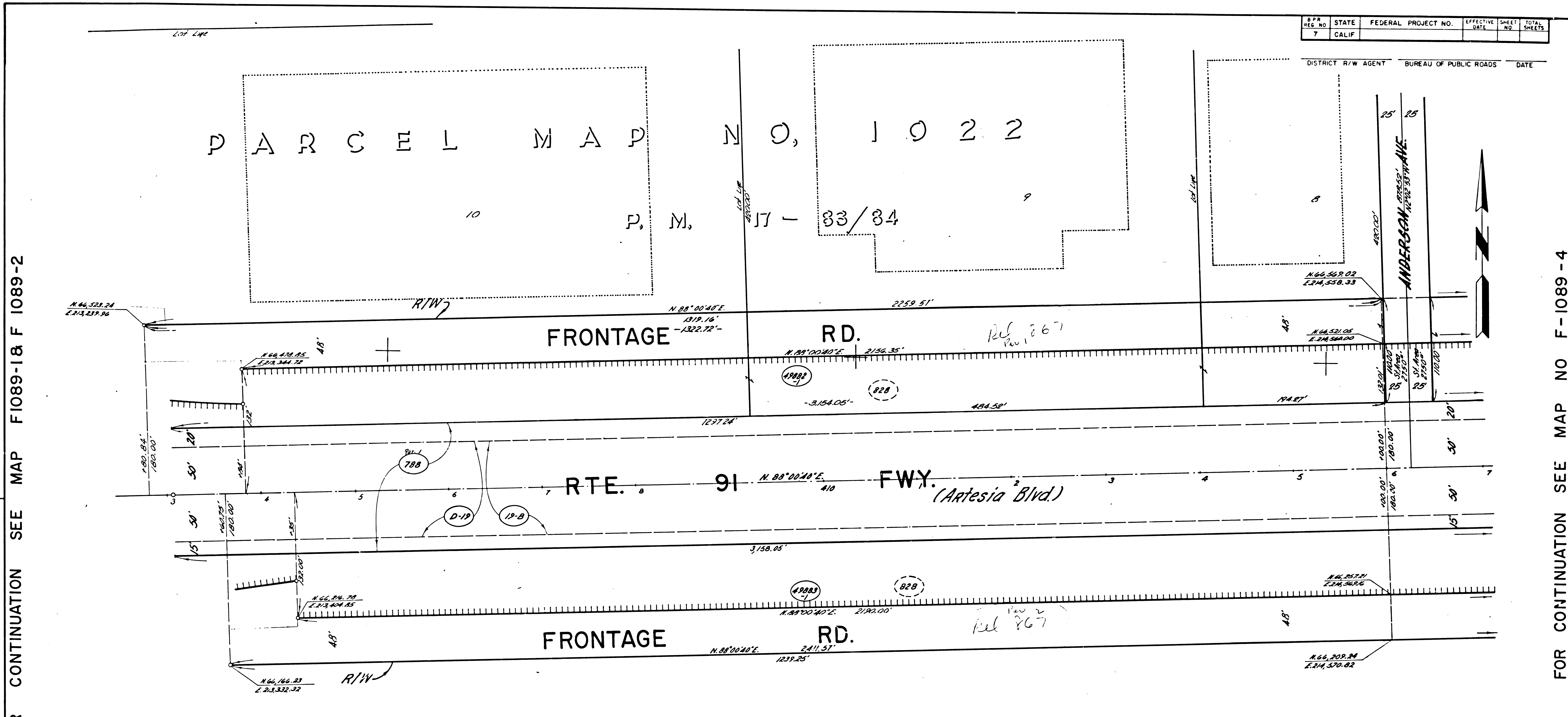


B.P.R. REG. NO.	STATE	FEDERAL PROJECT NO.	EFFECTIVE DATE	SHEET NO.	TOTAL SHEETS
7	CALIF.				

DISTRICT R/W AGENT BUREAU OF PUBLIC ROADS DATE

FOR CONTINUATION SEE MAP F1089-18 F 1089-2

FOR CONTINUATION SEE MAP NO F-1089-4



PARCEL MAP NO. 1430
P. M. 23-60

CITY OF COMPTON

PARCEL NO.	GRANTOR OR GRANTEE	ACQ. EXCESS	AREA * TOTAL	RECORDING DATA	
				DATE	O.R.
48882-1	John Hancock Ins. Co.	See Map No. 21442-G		F1089-1	
48883-1	"	See Map No. 21443-G		F1089-2	
788	Heller, et al.	See Map No. 21544-G		F1089-2	
19-B	Union Oil Co.	See Map No. "			
D-19	State of Persons Leg. Cal/Hol	See Map No. "			

ISSUE DATE	STATE OF CALIFORNIA
3-13-69	TRANSPORTATION DEPARTMENT OF
10-8-69	AGENCY PUBLIC WORKS
12-22-69	DIVISION OF HIGHWAYS
10-30-70	
	R/W MAP
	NO. F 1089-3
	07-LA-91-8.7
	DATE 2-21-69
	RWPE K. DUNN SR C. Moseley
LEGEND: ACCESS DENIED + EXCLUDES STREET AREA	
* AREA IN SQUARE FEET UNLESS OTHERWISE NOTED	
() PREVIOUS RECORD DATA	

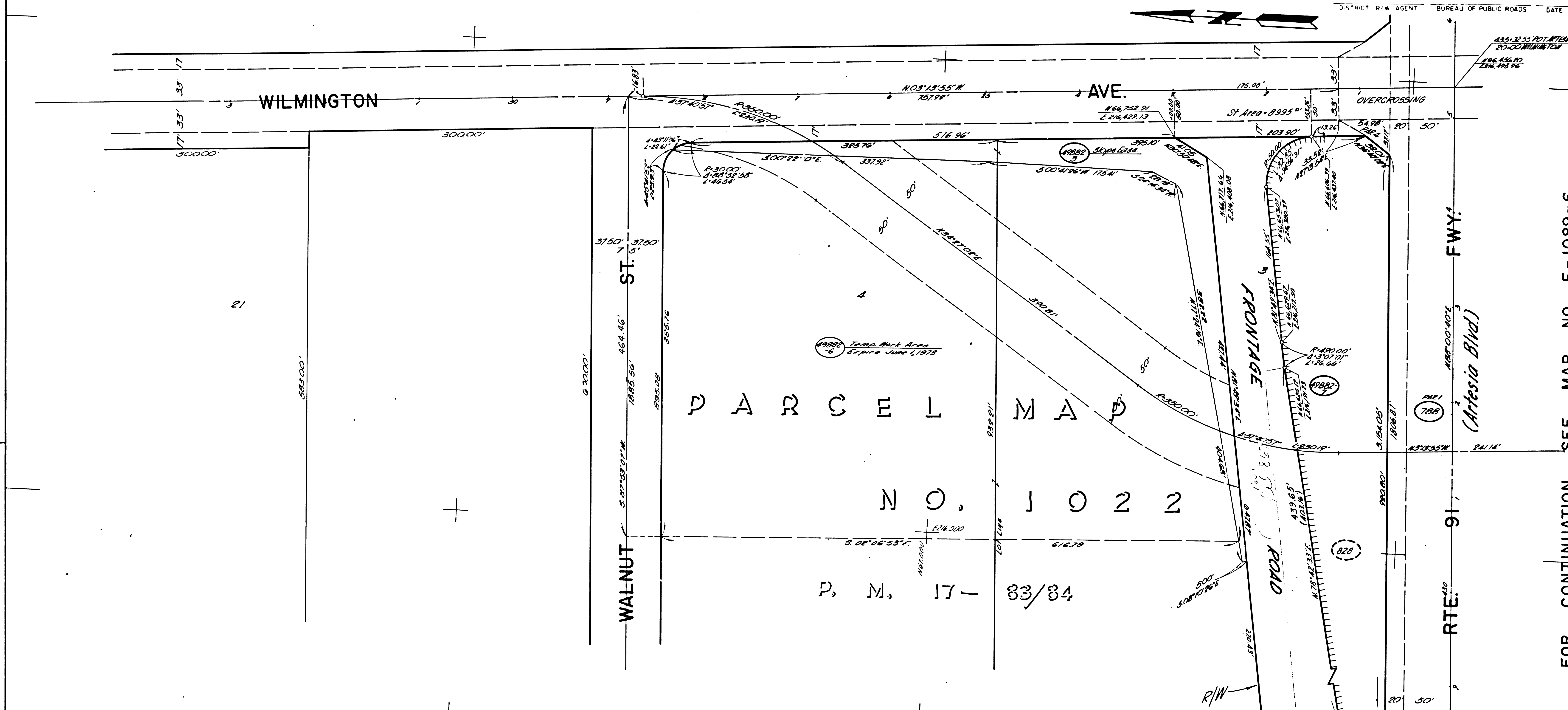
F.M. 21527-3

F.M. 21527-3 21544-G

CITY OF COMPTON

MATCH TO F-1090-1

8	7	7	CALIF	FEDERAL PROJECT NO	EFFECTIVE DATE	SHEET NO	TOTAL SHEETS
---	---	---	-------	--------------------	----------------	----------	--------------



PARCEL NO. 1022
P. M. 17-33/34

FOR CONTINUATION SEE MAP NO. F-1089-6

FOR CONTINUATION SEE MAP NO F-1089-4

PARCEL NO	GRANTOR OR GRANTEE	AREA *			INST	RECORDING DATA		PARCEL NO	GRANTOR OR GRANTEE	AREA *			INST	RECORDING DATA		PARCEL NO	GRANTOR OR GRANTEE	AREA *			INST	RECORDING DATA	
		ACQ	EXCESS	TOTAL		DATE	OR			ACQ	EXCESS	TOTAL		DATE	OR			ACQ	EXCESS	TOTAL		DATE	OR
49282-7	J. Hancock Ins Co	5,482.46		25,892.46	FREE COND.	7-26-72	D5545-323																
49282-8	J. Hancock Ins Co	210.46		25,871.46	FREE COND.	7-26-72	D5545-323																
49282-6	J. Hancock Ins Co	230,937		Temp Mark Area																			
788	Heller	See Map	26,443.9	F1089-2																			

STATE OF CALIFORNIA
TRANSPORTATION DEPARTMENT OF
AGENCY PUBLIC WORKS
DIVISION OF HIGHWAYS

R/W MAP
NO. F 1089-5
07-LA-91-9.1

DATE 2-21-69
RWPE K. Dunn
SR C. Mosley

LEGEND:
 [Symbol] ACCESS DENIED
 [Symbol] EXCLUDES STREET AREA
 * AREA IN SQUARE FEET UNLESS OTHERWISE NOTED
 () PREVIOUS RECORD DATA

F.M. 21527-5

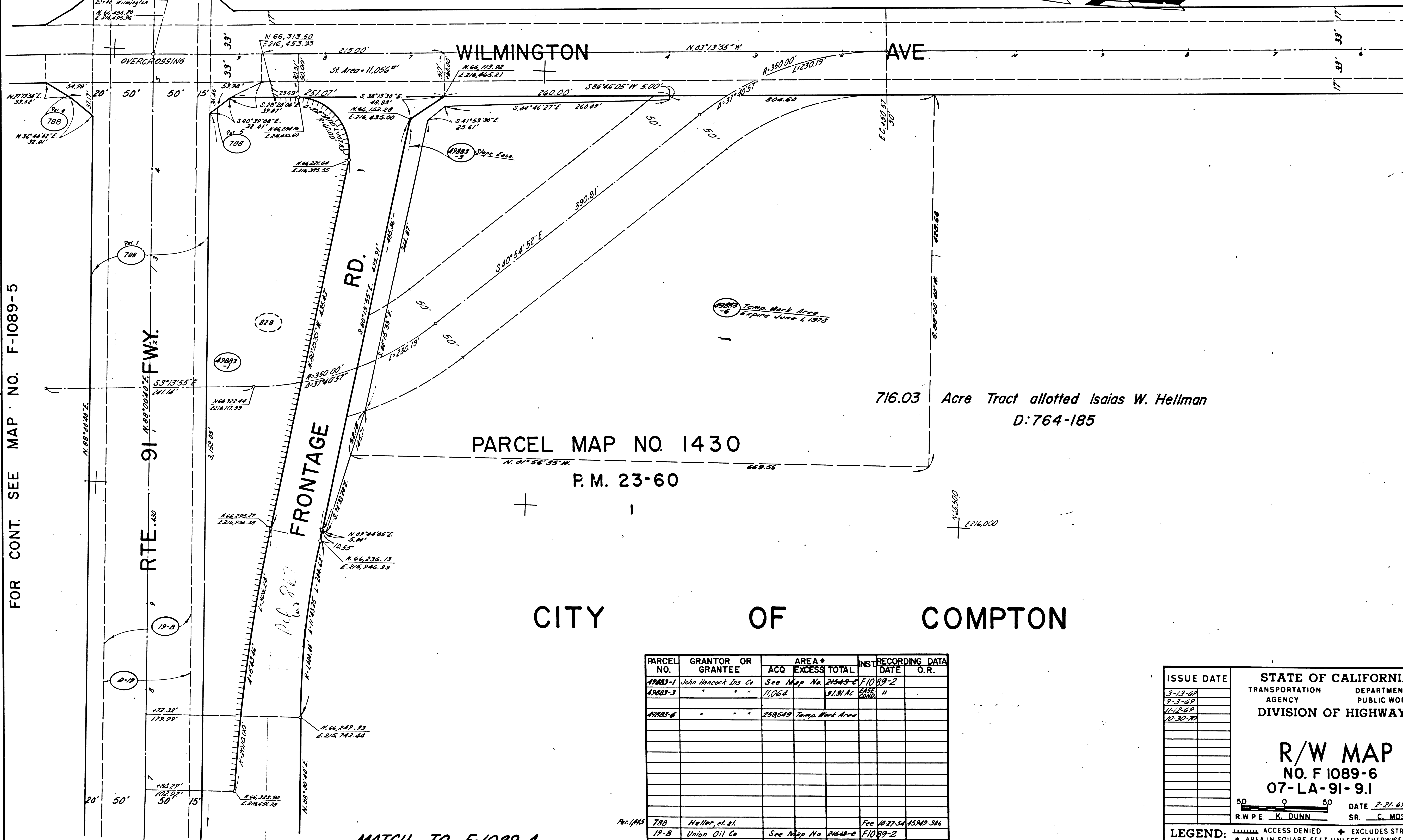
F.M. 21527-5 21546-6

FOR CONTINUATION SEE MAP NO F-1090-1

S.P.R. REG. NO.	STATE	FEDERAL PROJECT NO.	EFFECTIVE DATE	SHEET NO.	TOTAL SHEETS
7	CALIF.				

DISTRICT R/W AGENT BUREAU OF PUBLIC ROADS D.S.E.

RANCHO SAN PEDRO



FOR CONT. SEE MAP NO. F-1089-5

MATCH TO F-1089-4

PARCEL NO.	GRANTOR OR GRANTEE	AREA *			INST.	RECORDING DATA	
		ACQ.	EXCESS	TOTAL		DATE	O.R.
49823-1	John Hancock Ins. Co.	See Map No.	21543-5	F1089-2			
49823-3	" "	11064		91.91 AC	EASE	"	
49823-4	" "	259549		Temp. Mark Area			
788	Heller, et al.				Fee	11875445949-306	
19-B	Union Oil Co	See Map No.	21648-4	F1089-2			
D-19	State Personnel Log Entries	See Map No.				"	

ISSUE DATE

3-13-69
2-3-69
11-12-69
10-30-70

STATE OF CALIFORNIA
TRANSPORTATION DEPARTMENT OF
AGENCY PUBLIC WORKS
DIVISION OF HIGHWAYS

R/W MAP
NO. F 1089-6
07-LA-91-9.1

50 0 50 DATE 2-21-69
R.W.P.E. K. DUNN SR. C. MOSELEY

LEGEND:
ACCESS DENIED * AREA IN SQUARE FEET UNLESS OTHERWISE NOTED
EXCLUDES STREET AREA
() PREVIOUS RECORD DATA

F.M. 21527-6

FM 21527-6

21547-6