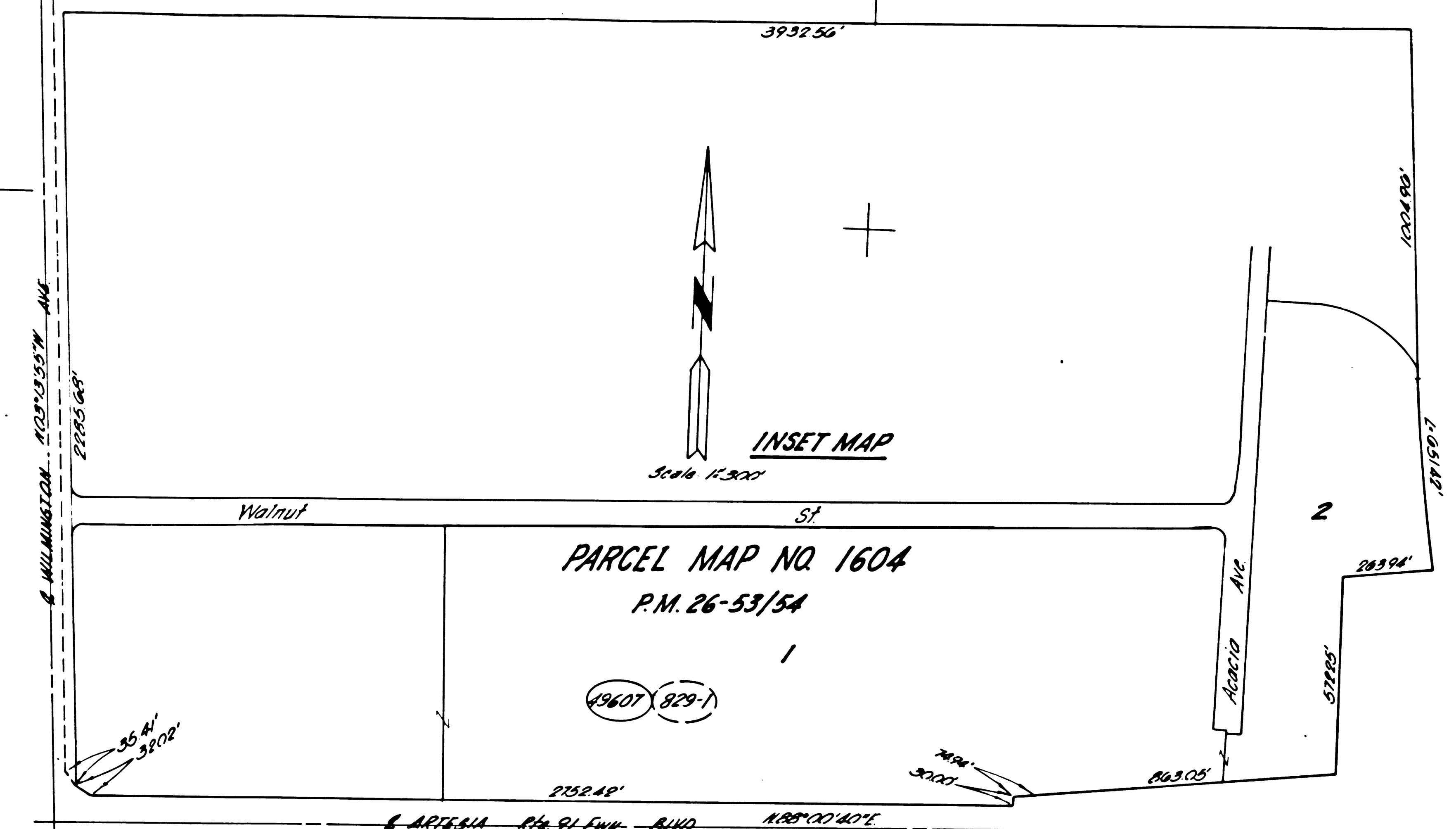


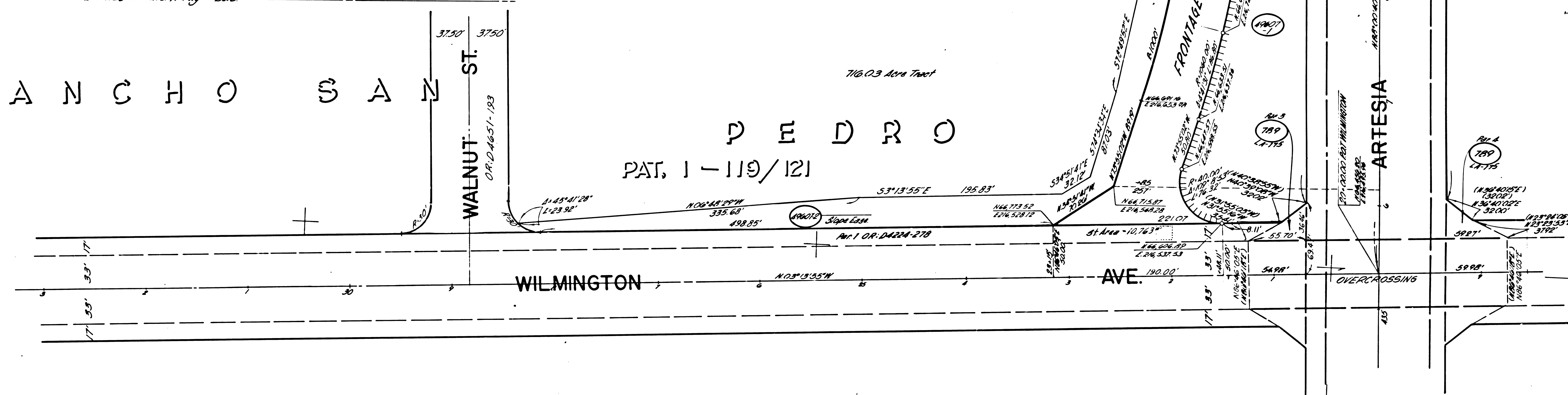
FOR CONTINUATION SEE MAP NO. F1090-3

STATE	FEDERAL PROJECT NO.	EFFECTIVE DATE	SHEET NO.	TOTAL SHEETS
CALIF.			7	



R A N C H O S A N

P E D R O
PAT. 1-119/121



FOR CONTINUATION SEE MAP NO. F1090-2

CITY OF COMPTON

MATCH TO F-1089-6

FOR CONTINUATION SEE MAP NO. F1089-6

PARCEL NO.	GRANTOR OR GRANTEE	AREA*			INST.	RECORDING DATA	
		NO. ACQUIRED	EXCESS	TOTAL		DATE	O.R.
789	Heller				100	820154	06438-100
198	Union Oil Co.				404	5939	10560-195
DAP	S. Polignac Land				00	11449	51378-79
19007-1	John Hancock Ins. Co.	83	Ac.	7200	FILED	7-26-72	D5545-323
19007-2	John Hancock Ins. Co.	1125	Ac.	7200	FILED	7-26-72	D5545-323

ISSUE DATE

2-3-69
9-3-69
11-18-69
10-22-70
12-1-71

STATE OF CALIFORNIA
TRANSPORTATION DEPARTMENT OF
AGENCY PUBLIC WORKS
DIVISION OF HIGHWAYS

R/W MAP
NO. F1090-1
07-L.A.-91-9.2

50 0 50 DATE 2-20-69
RWPE K. DUNN SR R. FOLKINS

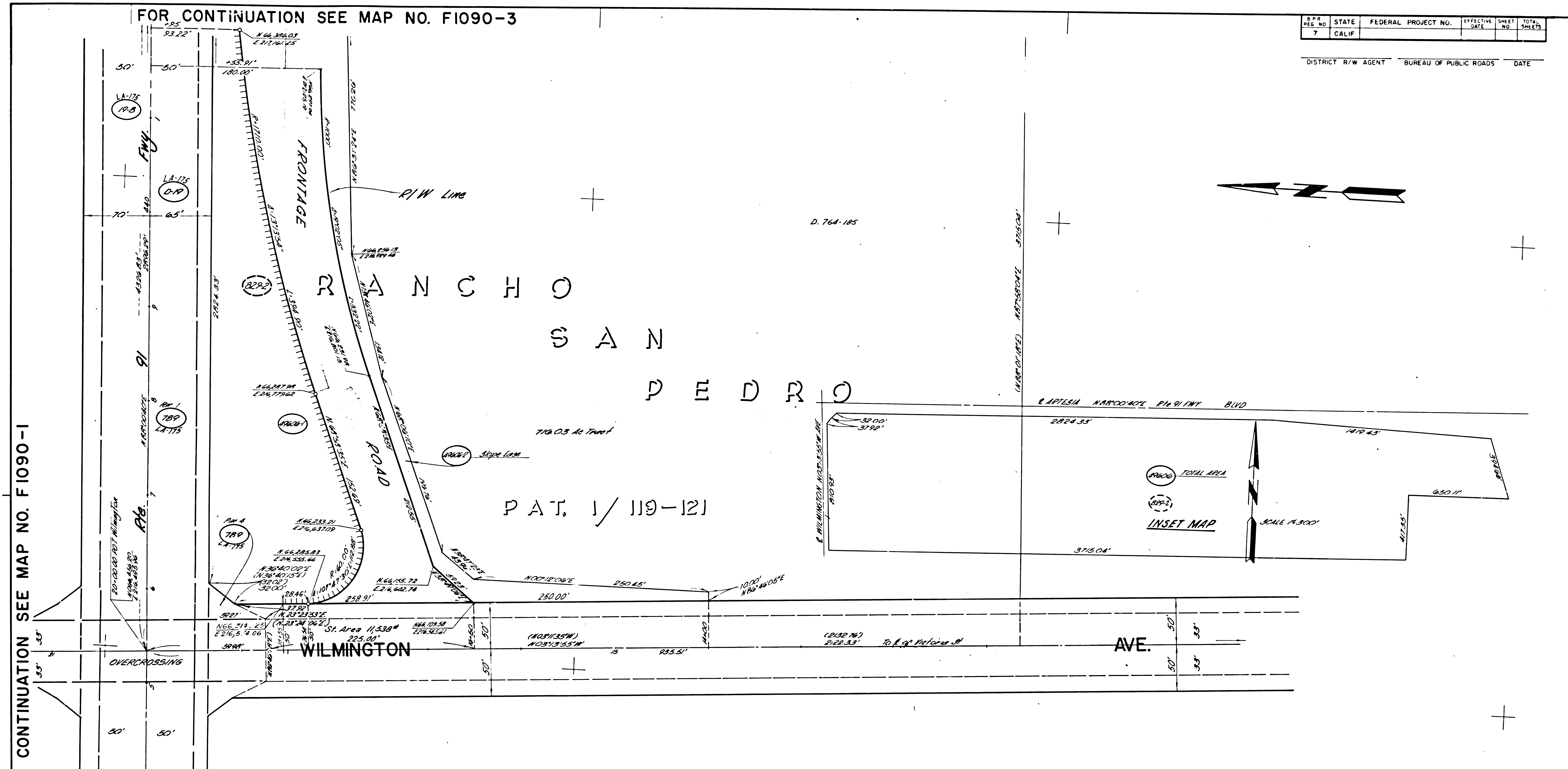
LEGEND: ACCESS DENIED EXCLUDES STREET AREA
 AREA IN SQUARE FEET UNLESS OTHERWISE NOTED
 PREVIOUS RECORD DATA

F.M. 21528-1

FOR CONTINUATION SEE MAP NO. F1090-3

B.P.R. REG. NO.	STATE	FEDERAL PROJECT NO.	EFFECTIVE DATE	SHEET NO.	TOTAL SHEETS
7	CALIF.				

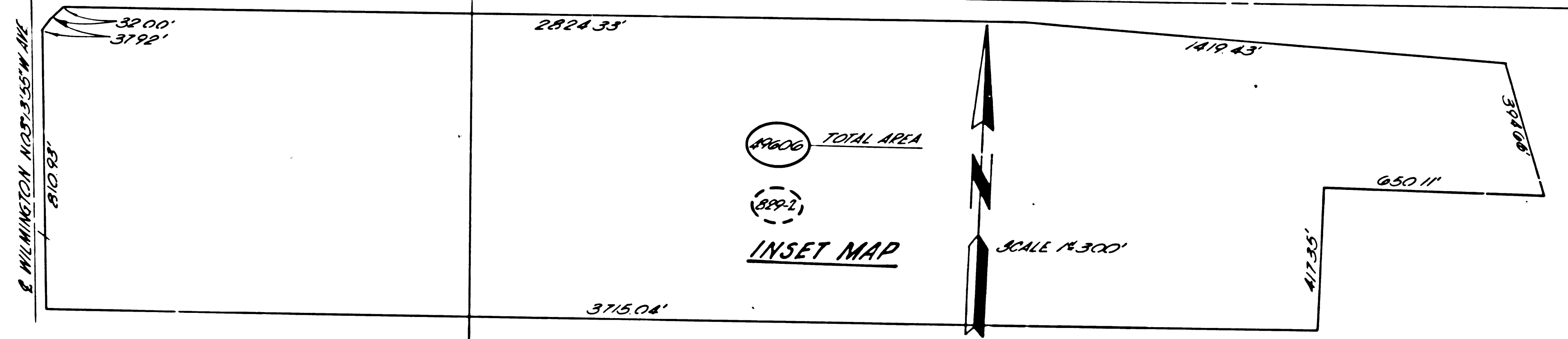
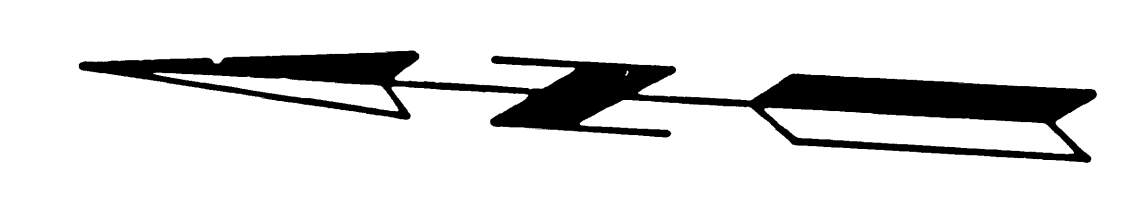
DISTRICT R/W AGENT BUREAU OF PUBLIC ROADS DATE



FOR CONTINUATION SEE MAP NO. F1090-1

CITY OF COMPTON
FOR CONTINUATION SEE MAP NO. F1089-6

D. 764-185



PARCEL NO.	GRANTOR OR GRANTEE	AREA*		INST.	RECORDING DATA	
		TO BE ACQUIRED	EXCESS TOTAL		DATE	O.R.
789	See Map No(21549-C) F1090-1					
198	See Map No(21549-C) F1090-1					
D-19	See Map No(21549-C) F1090-1					
496261	John Hancock Ins. Co. 120616		78.03 AC	FEEL 2060	7/26/72	D5545-323
496262	John Hancock Ins. Co. 131316			FEEL 2060	7/26/72	D5545-323

ISSUE DATE

4-3-69
9-3-69
10-15-69
11-12-69
12-22-70

STATE OF CALIFORNIA
TRANSPORTATION DEPARTMENT OF
AGENCY PUBLIC WORKS
DIVISION OF HIGHWAYS

R/W MAP
NO. F1090-2
07-L.A.-91-9.2

DATE 2-20-69
R/W P E. K. DUNN SR. R. FOLKINS

LEGEND:
ACCESS DENIED + EXCLUDES STREET AREA
* AREA IN SQUARE FEET UNLESS OTHERWISE NOTED
() PREVIOUS RECORD DATA

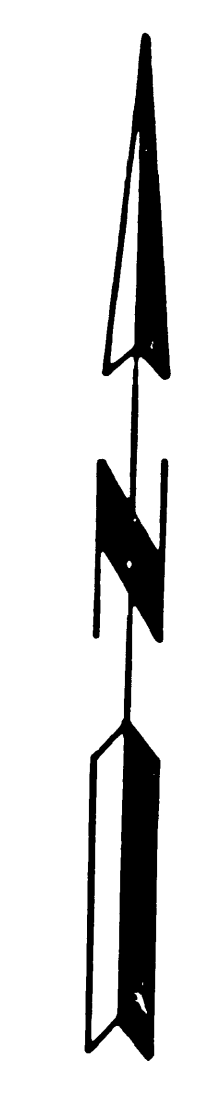
F.M. 21528-2

B.P.R. REG. NO.	STATE	FEDERAL PROJECT NO.	EFFECTIVE DATE	SHEET NO.	TOTAL SHEETS
7	CALIF.				

DISTRICT R/W AGENT BUREAU OF PUBLIC ROADS DATE

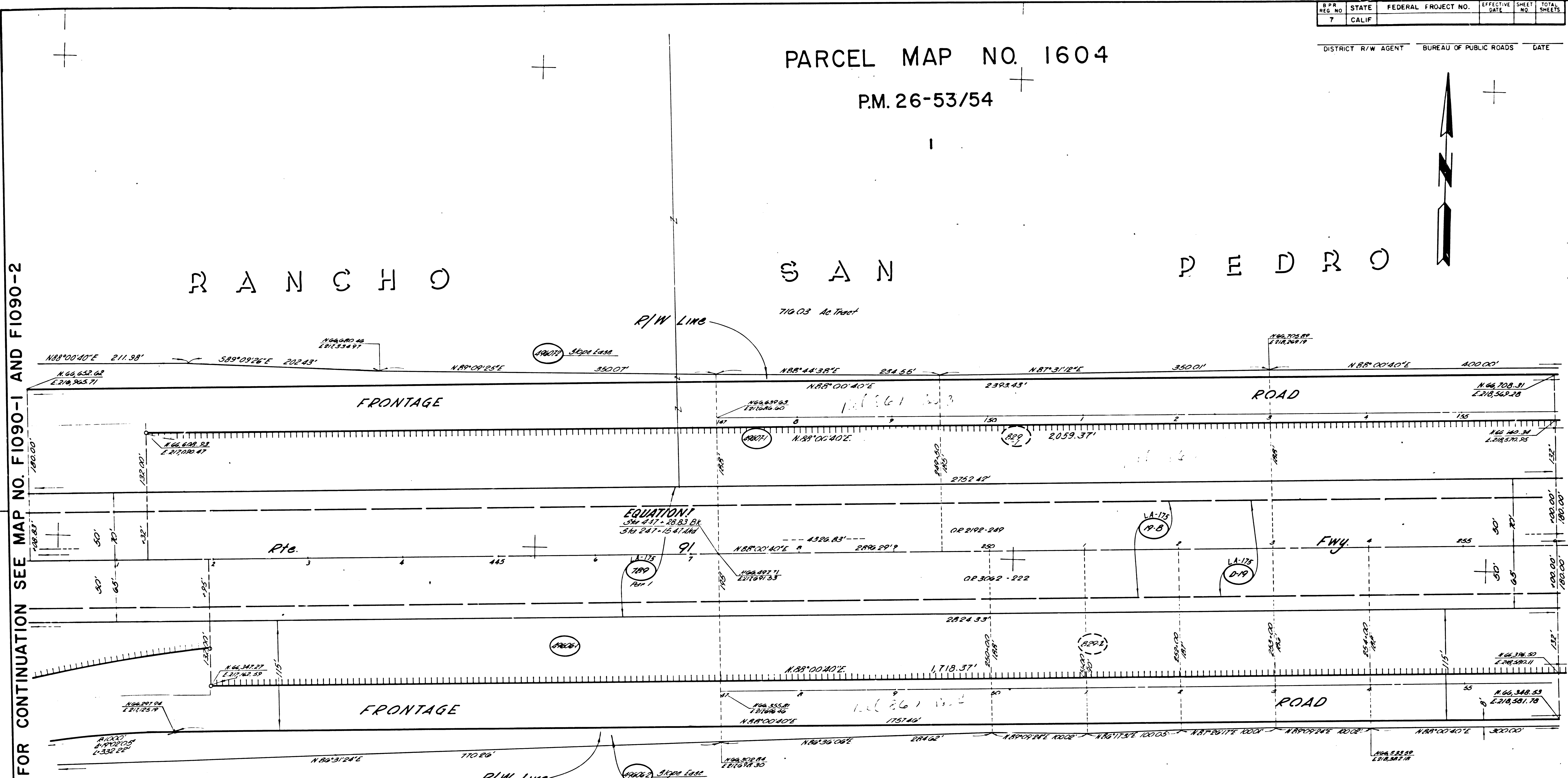
PARCEL MAP NO. 1604
P.M. 26-53/54

RANCHO SAN PEDRO



FOR CONTINUATION SEE MAP NO. F1090-1 AND F1090-2

FOR CONTINUATION SEE MAP NO. F1090-4



CITY OF COMPTON

PAT. 1/119-121

PARCEL NO.	GRANTOR OR GRANTEE	NO. ACQUIRED	AREA*		RECORDING DATA	
			EXCESS	TOTAL	DATE	O. R.
789	Heller	See Map No. 1-21549-01			F1090-2	
19-B	Union Oil Co.	See Map No. 1-21549-01			F1090-2	
D-19	Atty Legal Entity	See Map No. 1-21549-01			F1090-2	
19-C	See Map No. 1-21549-01				SEE MAP NO. F1090-2	
19-D	See Map No. 1-21549-01				SEE MAP NO. F1090-2	
19-E	See Map No. 1-21549-01				SEE MAP NO. F1090-1	
19-F	See Map No. 1-21549-01				F1090-1	

ISSUE DATE
10-3-69
12-11-70
12-21-71

STATE OF CALIFORNIA
TRANSPORTATION DEPARTMENT OF
AGENCY PUBLIC WORKS
DIVISION OF HIGHWAYS

R/W MAP
NO. F1090-3
07-L.A.-91-9.5

DATE 2-20-69
R/W P.E. K. DUNN
SR R. FOLKINS

LEGEND:
ACCESS DENIED
AREA IN SQUARE FEET UNLESS OTHERWISE NOTED
PREVIOUS RECORD DATA

F.M. 21528-3

F.M. 21525-3

21551-6

CITY OF COMPTON PARCEL MAP NO. 1604

P.M. 26-53/54

RANCHO

SAN

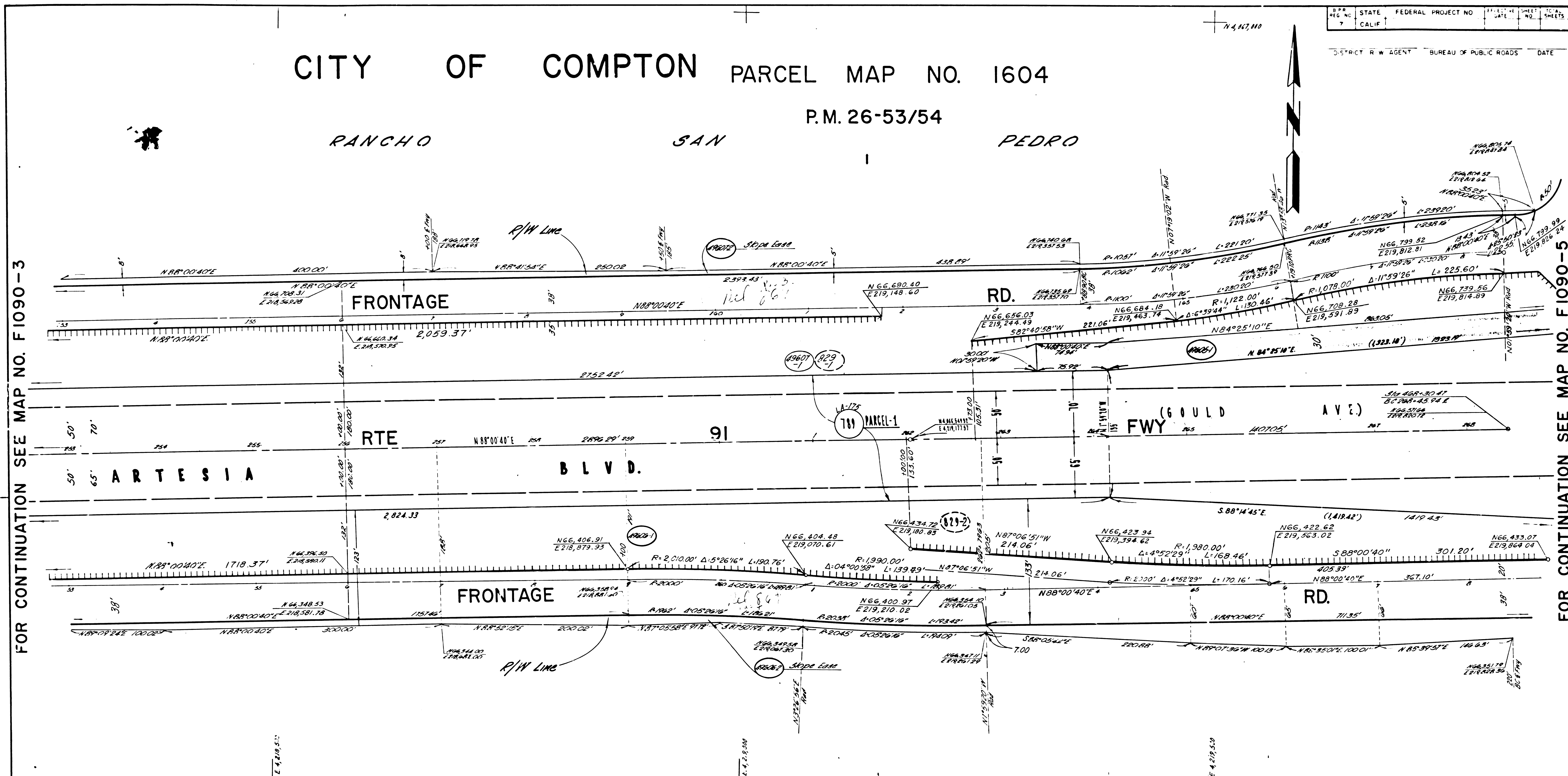
PEDRO

SHEET NO.	DATE	SHEET NO.	DATE
7		7	

DISTRICT R/W AGENT BUREAU OF PUBLIC ROADS DATE

FOR CONTINUATION SEE MAP NO. F1090-3

FOR CONTINUATION SEE MAP NO. F1090-5



PARCEL NO	GRANTOR OR GRANTEE	AREA *			INST	RECORDING DATA		PARCEL NO	GRANTOR OR GRANTEE	AREA *			INST	RECORDING DATA		PARCEL NO	GRANTOR OR GRANTEE	AREA *			INST	RECORDING DATA		ISSUE DATE
		ACO	EXCESS	TOTAL		DATE	OR			ACO	EXCESS	TOTAL		DATE	OR			ACO	EXCESS	TOTAL		DATE	OR	
789 Ar 1	C.H. Heller, et al.				Fee	12-21-54	46438-186																1-8-69 10-22-70	
789 Ar 1	See Map No. 200000 F1090-2																							
789 Ar 2	See Map No. 200000 F1090-2																							
789 Ar 1	See Map No. 200000 F1090-1																							
789 Ar 2	See Map No. 200000 F1090-1																							
789 Ar 1	See Map No. 200000 F-1090-5																							

STATE OF CALIFORNIA
TRANSPORTATION DEPARTMENT OF
AGENCY PUBLIC WORKS
DIVISION OF HIGHWAYS

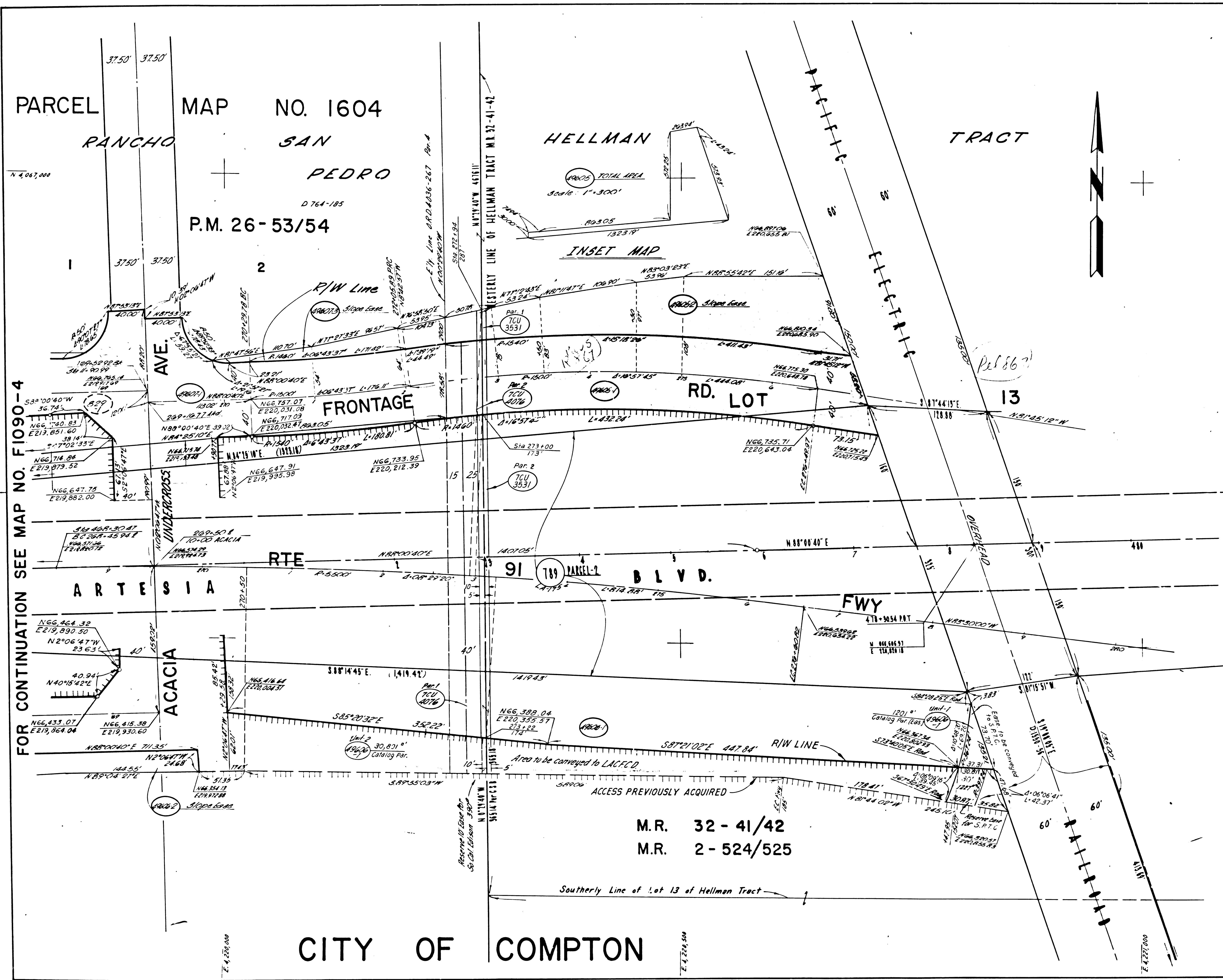
R/W MAP
NO. F1090-4
07-L.A.-91-9.6

DATE 11-6-68
R/W P.E. K. DUNN SR R. FOLKINS

LEGEND:
 ACCESS DENIED * EXCLUDES STREET AREA
 * AREA IN SQUARE FEET UNLESS OTHERWISE NOTED
 () PREVIOUS RECORD DATA ▲ INCLUDES EASEMENT AREA

F.M. 21528-4

F.M. 21528-4 -2176-6-



PARCEL NO	GRANTOR OR GRANTEE	ACO	EXCESS	AREA * TOTAL	INST DATE OR	RECORDING DATA
789 Part	CH. Heller, et al.				Fee	12-21-54 46438-186
PARCEL-1	HELLMAN ET AL.	16046		56446	2-17-72	D5357-242
PARCEL-2	HELLMAN ET AL.	24273		56446	2-17-72	D5357-242
PARCEL-1	John Hancock Ins. Co.	See Map No.		21550-C		F-1090-2
PARCEL-2	John Hancock Ins. Co.	See Map No.		21550-C		F-1090-2
PARCEL-1	John Hancock Ins. Co.	See Map No.		21549-C		F-1090-1
PARCEL-2	John Hancock Ins. Co.	See Map No.		21549-C		F-1090-1
TCU-3531	State of So. Cal. Edison			72,004c	1-26-72	D5545-323
TCU-4076	MWD					CU

ISSUE DATE
 11-7-68
 10-22-70
 1-14-71

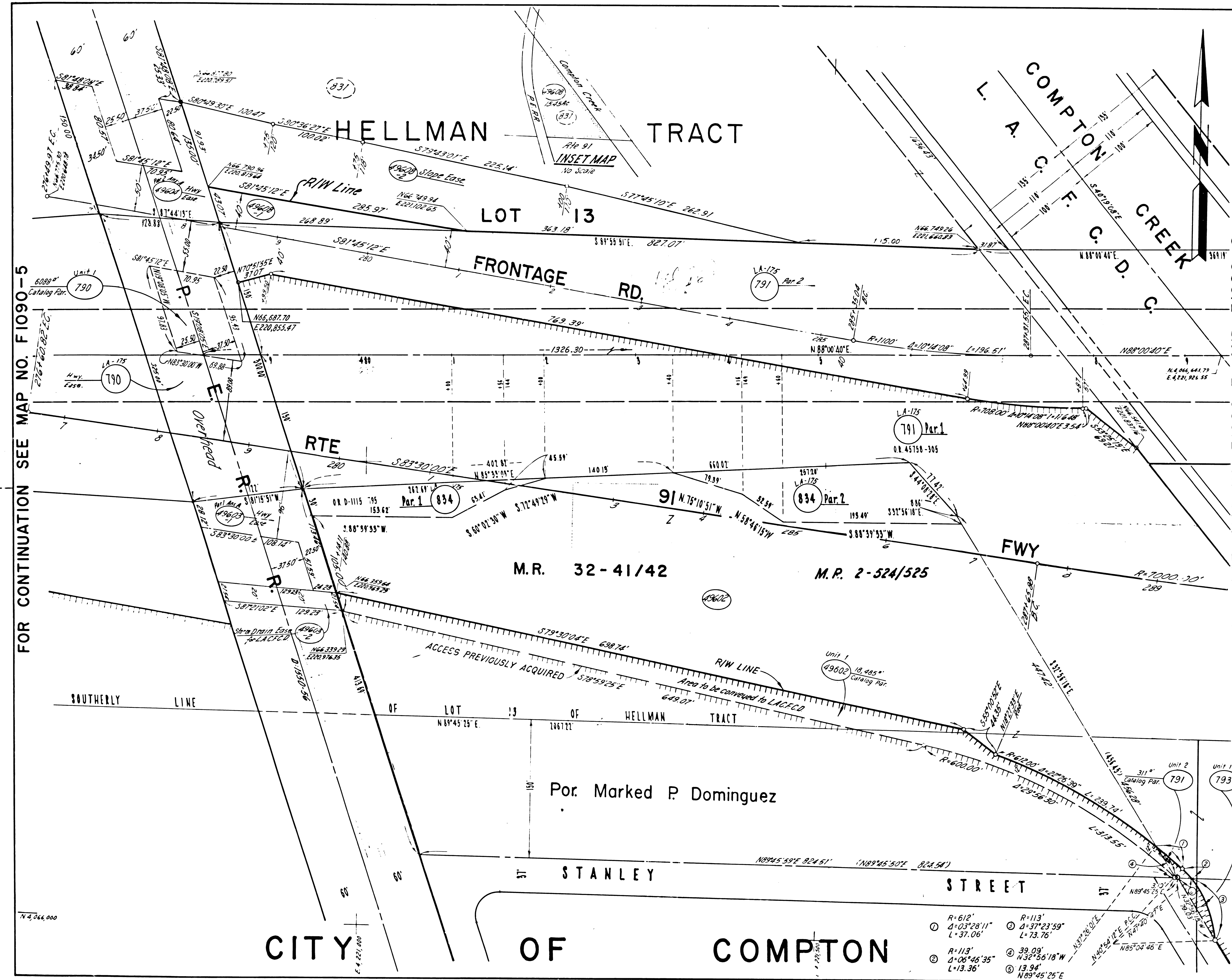
STATE OF CALIFORNIA
 TRANSPORTATION DEPARTMENT OF
 AGENCY PUBLIC WORKS
 DIVISION OF HIGHWAYS

R/W MAP
 NO. F1090-5
 07-L.A.-91-9.9

50 0 50
 R W P E K. DUNN
 DATE 11-7-68
 SR R. FOLKINS

LEGEND:
 ACCESS DENIED * EXCLUDES STREET AREA
 AREA IN SQUARE FEET UNLESS OTHERWISE NOTED
 () PREVIOUS RECORD DATA ▲ INCLUDES EASEMENT AREA

F.M. 21528-5



PARCEL NO	GRANTOR OR GRANTEE	AREA *		INST	RECORDING DATA		
		ACO	EXCESS TOTAL		DATE	OR	
790	Re. Div. Railway Co.			Case	1-23-56	D5122-32	
791 Par. 1	F.H. Ehrman, et al.			Fee	10-5-54	D5758-345	
834 Par. 1	A. Levinson, et al.			Fee	2-7-61	D1115-795	
834 Par. 2	A. Levinson, et al.			Fee	2-7-61	D1115-795	
793	Refer to Map No. F1090-6						
49602	Levinson	3,629.4		6,816.6	Fee	3-19-70	D4660-400
49603-1	S.P.T. Co.	6,648		Case	4-20-71	D5032-194	
49603-2	S.P.T. Co.	2,594		Case	8-18-71	D5163-353	
49604	S.P.T. Co.	12,021		"	4-20-71	D5032-194	
49605-1	John Hancock Ins. Co.	5,469		15,454.6	Fee	7-26-72	D5545-323
49605-2	"	37,612		"	"	"	"

STATE OF CALIFORNIA
TRANSPORTATION DEPARTMENT OF PUBLIC WORKS
AGENCY DIVISION OF HIGHWAYS

R/W MAP
NO. F1090-6
07-L.A.-91-10.1

DATE 11-7-68
 RWPE K. DUNN
 SR R. FOLKINS

LEGEND: ACCESS DENIED EXCLUDES STREET AREA
 * AREA IN SQUARE FEET UNLESS OTHERWISE NOTED
 () PREVIOUS RECORD DATA

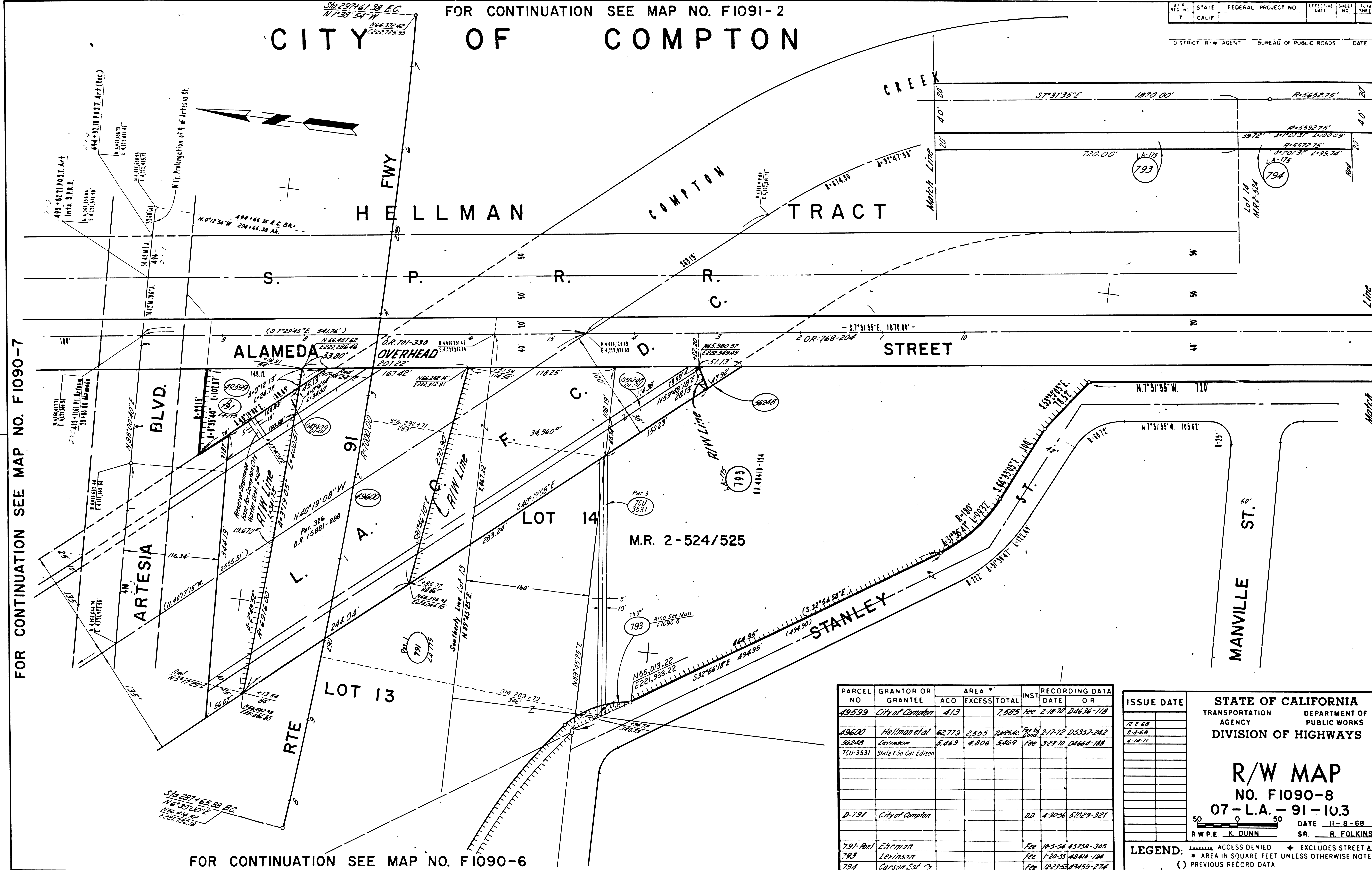
F.M. 21528-6

CITY OF COMPTON

FOR CONTINUATION SEE MAP NO. F1091-2

STATE	FEDERAL PROJECT NO.	EFFECTIVE DATE	SHEET NO.	TOTAL SHEETS
CALIF.				

DISTRICT R/W AGENT BUREAU OF PUBLIC ROADS DATE



FOR CONTINUATION SEE MAP NO. F1090-7

FOR CONTINUATION SEE MAP NO. F1090-6

PARCEL NO	GRANTOR OR GRANTEE	ACQ	EXCESS	TOTAL	INST	RECORDING DATA DATE OR
49599	City of Compton	413		7,585	Fee	2-18-70 D4636-118
49600	Hellman et al	62,779	2,535	2,062	Fee by Cont	2-17-72 D5357-242
46248	Levinson	5,469	4,806	8,469	Fee	3-23-70 D4444-188
TCU-3531	State & So. Cal. Edison					
D-791	City of Compton				DD	4-30-56 51029-321
791-Ann	ETHRIDGE				Fee	10-5-54 45758-305
793	Levinson				Fee	7-20-55 48411-124
794	Carson Est Co				Fee	12-23-53 43459-274

STATE OF CALIFORNIA
 TRANSPORTATION AGENCY
 DEPARTMENT OF PUBLIC WORKS
 DIVISION OF HIGHWAYS

R/W MAP
 NO. F1090-8
 07-L.A.-91-10.3

DATE 11-8-68
 RWPE K. DUNN
 SR. R. FOLKINS

LEGEND:
 ■ ACCESS DENIED
 * AREA IN SQUARE FEET UNLESS OTHERWISE NOTED
 () PREVIOUS RECORD DATA

FM. 21528-8

FM 21528-8

21179-6