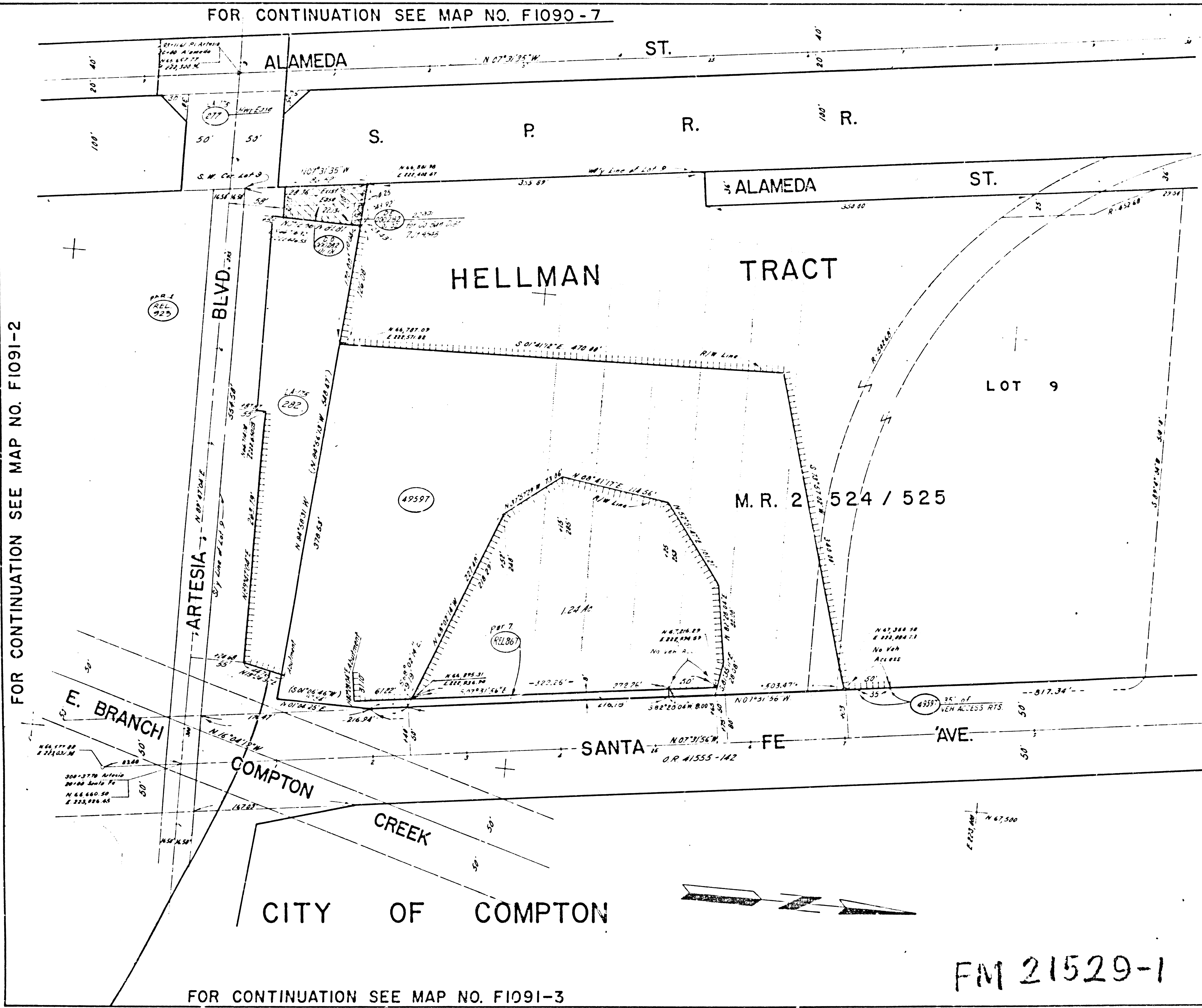


FOR CONTINUATION SEE MAP NO. F1090-7

FOR CONTINUATION SEE MAP NO. F1091-2



FOR CONTINUATION SEE MAP NO. F1091-3

STATE OF CALIF. FEDERAL PROJECT NO. DATE SHEETS

PARCEL NO.	GRANTOR OR GRANTEE	AREA*		INST. DATE OR	RECORDING DATA
		EXCESS	TOTAL		
49597	Other Work Co	3.81 Ac	10.78 Ac	100	10-17-69
49598	City of Compton			224	1-2-70
49599	City of Compton			224	1-2-70
49600					
49601					
49602					
49603					
49604					
49605					
49606					
49607					
49608					
49609					
49610					
49611					
49612					
49613					
49614					
49615					
49616					
49617					
49618					
49619					
49620					
49621					
49622					
49623					
49624					
49625					
49626					
49627					
49628					
49629					
49630					
49631					
49632					
49633					
49634					
49635					
49636					
49637					
49638					
49639					
49640					
49641					
49642					
49643					
49644					
49645					
49646					
49647					
49648					
49649					
49650					
49651					
49652					
49653					
49654					
49655					
49656					
49657					
49658					
49659					
49660					
49661					
49662					
49663					
49664					
49665					
49666					
49667					
49668					
49669					
49670					
49671					
49672					
49673					
49674					
49675					
49676					
49677					
49678					
49679					
49680					
49681					
49682					
49683					
49684					
49685					
49686					
49687					
49688					
49689					
49690					
49691					
49692					
49693					
49694					
49695					
49696					
49697					
49698					
49699					
49700					

ISSUE DATE

STATE OF CALIFORNIA  
TRANSPORTATION DEPARTMENT OF  
AGENCY PUBLIC WORKS  
DIVISION OF HIGHWAYS

R/W MAP  
NO. F1091-1  
07-L.A.-91-10.4

DATE 10-30-69  
RWPE K. DUNN SR R. FOLKINS

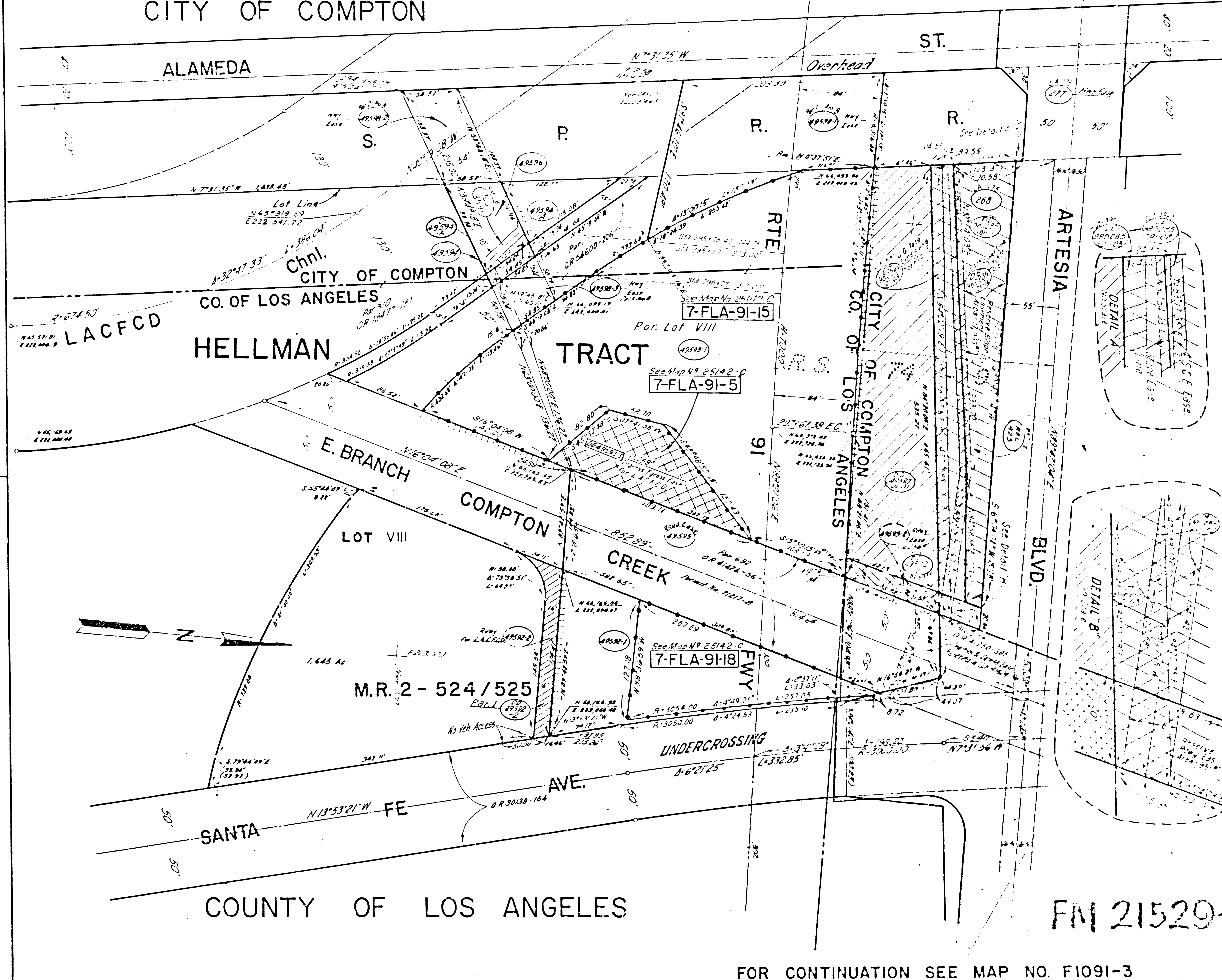
LEGEND: ACCESS DENIED  
AREA IN SQUARE FEET UNLESS OTHERWISE NOTED  
EXCLUDES STREET AREA  
( ) PREVIOUS RECORD DATA

FM 21529-1

CITY OF COMPTON

FOR CONTINUATION SEE MAP NO. F1090-8

STATE OF CALIFORNIA  
 FEDERAL HIGHWAY NO. 10  
 COUNTY OF LOS ANGELES



FOR CONTINUATION SEE MAP NO. F1091-1

PARCEL NO.	GRANTOR OR GRANTEE	AREA*		RECORDING DATA
		EXCESS	TOTAL	
49592-1	Prudential Ins Co	29.378	2.391 Ac	DD 4-17-77 77-908-71
49592-2	"	3.125	2.391 Ac	DD 4-17-77 77-908-71
49593-1	"	3.414	2.391 Ac	DD 4-17-77 77-908-71
49594	LACFCO	823	5.618	DD 7-27-77 77-908-71
49595	LACFCO	30.849		DD 7-27-77 77-908-71
49596	Sanjour & Sons	4.517	4.887 Ac	DD 4-17-77 77-908-71
49597	S.P.T.	2.672		DD 4-20-77 77-908-71
49598-1	"	5.852		
49598-2	"	2.743		
49599	Carson Estate Co	0.23	5.618	DD 10-17-77 77-908-71
49599-1	Carson Estate Co			DD 10-17-77 77-908-71
0101	Sand			DD 5-2-74 74-257-699
0102	State to LACFCO			DD 4-16-71 71-217-211
0103	State to LACFCO			DD 4-16-71 71-217-211
0104	State to LACFCO			DD 4-16-71 71-217-211
0105	State to LACFCO			DD 4-16-71 71-217-211
0106	State to LACFCO			DD 4-16-71 71-217-211
0107	State to LACFCO			DD 4-16-71 71-217-211
0108	State to LACFCO			DD 4-16-71 71-217-211
0109	State to LACFCO			DD 4-16-71 71-217-211
0110	State to LACFCO			DD 4-16-71 71-217-211
0111	State to LACFCO			DD 4-16-71 71-217-211
0112	State to LACFCO			DD 4-16-71 71-217-211
0113	State to LACFCO			DD 4-16-71 71-217-211
0114	State to LACFCO			DD 4-16-71 71-217-211
0115	State to LACFCO			DD 4-16-71 71-217-211
0116	State to LACFCO			DD 4-16-71 71-217-211
0117	State to LACFCO			DD 4-16-71 71-217-211
0118	State to LACFCO			DD 4-16-71 71-217-211
0119	State to LACFCO			DD 4-16-71 71-217-211
0120	State to LACFCO			DD 4-16-71 71-217-211
0121	State to LACFCO			DD 4-16-71 71-217-211
0122	State to LACFCO			DD 4-16-71 71-217-211
0123	State to LACFCO			DD 4-16-71 71-217-211
0124	State to LACFCO			DD 4-16-71 71-217-211
0125	State to LACFCO			DD 4-16-71 71-217-211
0126	State to LACFCO			DD 4-16-71 71-217-211
0127	State to LACFCO			DD 4-16-71 71-217-211
0128	State to LACFCO			DD 4-16-71 71-217-211
0129	State to LACFCO			DD 4-16-71 71-217-211
0130	State to LACFCO			DD 4-16-71 71-217-211
0131	State to LACFCO			DD 4-16-71 71-217-211
0132	State to LACFCO			DD 4-16-71 71-217-211
0133	State to LACFCO			DD 4-16-71 71-217-211
0134	State to LACFCO			DD 4-16-71 71-217-211
0135	State to LACFCO			DD 4-16-71 71-217-211
0136	State to LACFCO			DD 4-16-71 71-217-211
0137	State to LACFCO			DD 4-16-71 71-217-211
0138	State to LACFCO			DD 4-16-71 71-217-211
0139	State to LACFCO			DD 4-16-71 71-217-211
0140	State to LACFCO			DD 4-16-71 71-217-211
0141	State to LACFCO			DD 4-16-71 71-217-211
0142	State to LACFCO			DD 4-16-71 71-217-211
0143	State to LACFCO			DD 4-16-71 71-217-211
0144	State to LACFCO			DD 4-16-71 71-217-211
0145	State to LACFCO			DD 4-16-71 71-217-211
0146	State to LACFCO			DD 4-16-71 71-217-211
0147	State to LACFCO			DD 4-16-71 71-217-211
0148	State to LACFCO			DD 4-16-71 71-217-211
0149	State to LACFCO			DD 4-16-71 71-217-211
0150	State to LACFCO			DD 4-16-71 71-217-211
0151	State to LACFCO			DD 4-16-71 71-217-211
0152	State to LACFCO			DD 4-16-71 71-217-211
0153	State to LACFCO			DD 4-16-71 71-217-211
0154	State to LACFCO			DD 4-16-71 71-217-211
0155	State to LACFCO			DD 4-16-71 71-217-211
0156	State to LACFCO			DD 4-16-71 71-217-211
0157	State to LACFCO			DD 4-16-71 71-217-211
0158	State to LACFCO			DD 4-16-71 71-217-211
0159	State to LACFCO			DD 4-16-71 71-217-211
0160	State to LACFCO			DD 4-16-71 71-217-211
0161	State to LACFCO			DD 4-16-71 71-217-211
0162	State to LACFCO			DD 4-16-71 71-217-211
0163	State to LACFCO			DD 4-16-71 71-217-211
0164	State to LACFCO			DD 4-16-71 71-217-211
0165	State to LACFCO			DD 4-16-71 71-217-211
0166	State to LACFCO			DD 4-16-71 71-217-211
0167	State to LACFCO			DD 4-16-71 71-217-211
0168	State to LACFCO			DD 4-16-71 71-217-211
0169	State to LACFCO			DD 4-16-71 71-217-211
0170	State to LACFCO			DD 4-16-71 71-217-211
0171	State to LACFCO			DD 4-16-71 71-217-211
0172	State to LACFCO			DD 4-16-71 71-217-211
0173	State to LACFCO			DD 4-16-71 71-217-211
0174	State to LACFCO			DD 4-16-71 71-217-211
0175	State to LACFCO			DD 4-16-71 71-217-211
0176	State to LACFCO			DD 4-16-71 71-217-211
0177	State to LACFCO			DD 4-16-71 71-217-211
0178	State to LACFCO			DD 4-16-71 71-217-211
0179	State to LACFCO			DD 4-16-71 71-217-211
0180	State to LACFCO			DD 4-16-71 71-217-211
0181	State to LACFCO			DD 4-16-71 71-217-211
0182	State to LACFCO			DD 4-16-71 71-217-211
0183	State to LACFCO			DD 4-16-71 71-217-211
0184	State to LACFCO			DD 4-16-71 71-217-211
0185	State to LACFCO			DD 4-16-71 71-217-211
0186	State to LACFCO			DD 4-16-71 71-217-211
0187	State to LACFCO			DD 4-16-71 71-217-211
0188	State to LACFCO			DD 4-16-71 71-217-211
0189	State to LACFCO			DD 4-16-71 71-217-211
0190	State to LACFCO			DD 4-16-71 71-217-211
0191	State to LACFCO			DD 4-16-71 71-217-211
0192	State to LACFCO			DD 4-16-71 71-217-211
0193	State to LACFCO			DD 4-16-71 71-217-211
0194	State to LACFCO			DD 4-16-71 71-217-211
0195	State to LACFCO			DD 4-16-71 71-217-211
0196	State to LACFCO			DD 4-16-71 71-217-211
0197	State to LACFCO			DD 4-16-71 71-217-211
0198	State to LACFCO			DD 4-16-71 71-217-211
0199	State to LACFCO			DD 4-16-71 71-217-211
0200	State to LACFCO			DD 4-16-71 71-217-211

ISSUE DATE: 10-30-68

STATE OF CALIFORNIA  
 TRANSPORTATION DEPARTMENT  
 AGENCY PUBLIC WORKS  
 DIVISION OF HIGHWAYS

**R/W MAP**  
 NO. F1091-2  
 07-L.A.-91-10.4

DATE: 10-30-68  
 RWPE: K. DUNN SR. R. FOLKINS.

LEGEND:

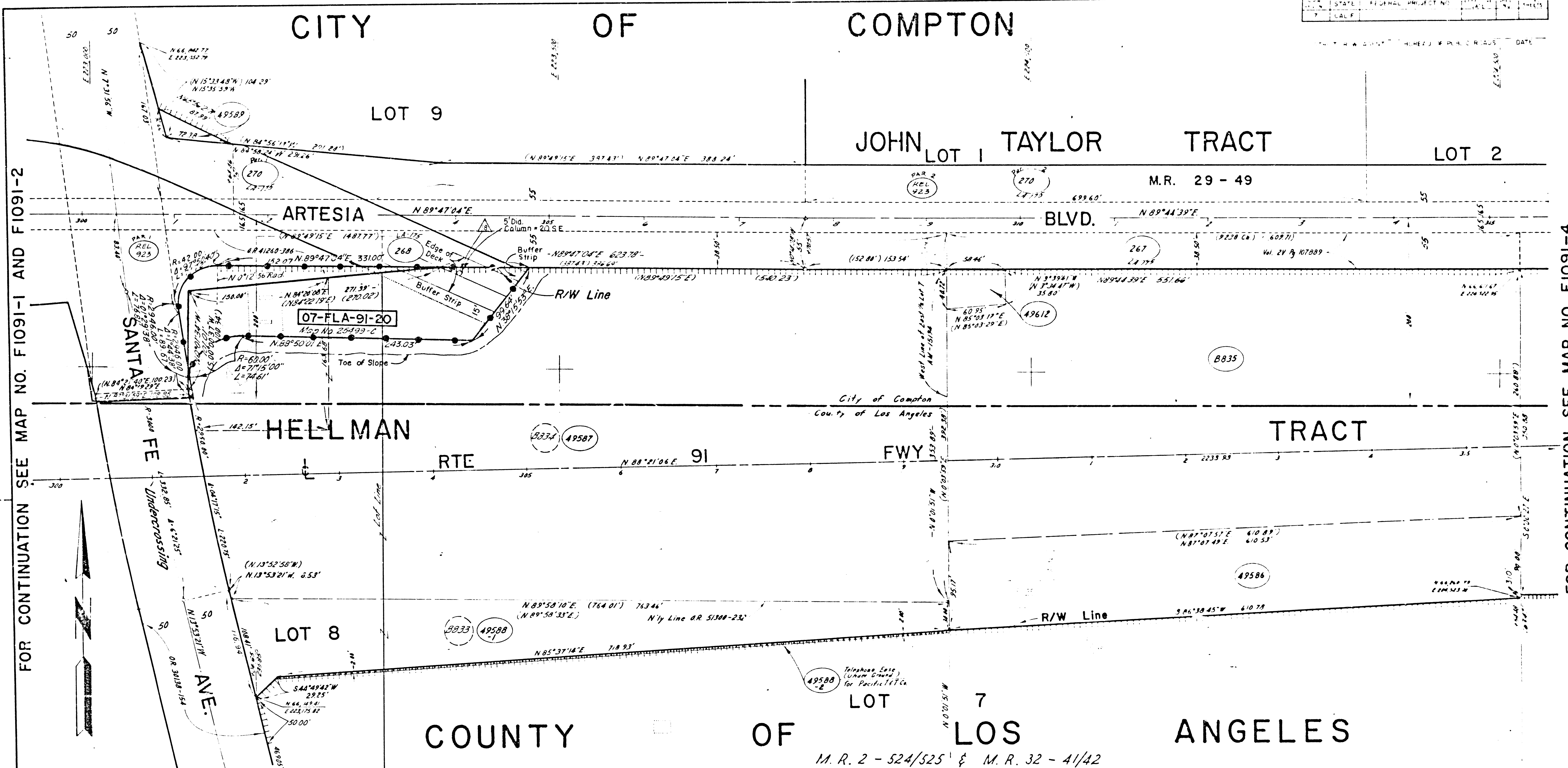
21091-6--

FOR CONTINUATION SEE MAP NO. F1091-3

FM 21529-2

# CITY OF COMPTON

STATE	FEDERAL PROJECT NO.	SHEET NO.	TOTAL SHEETS
7		1	1



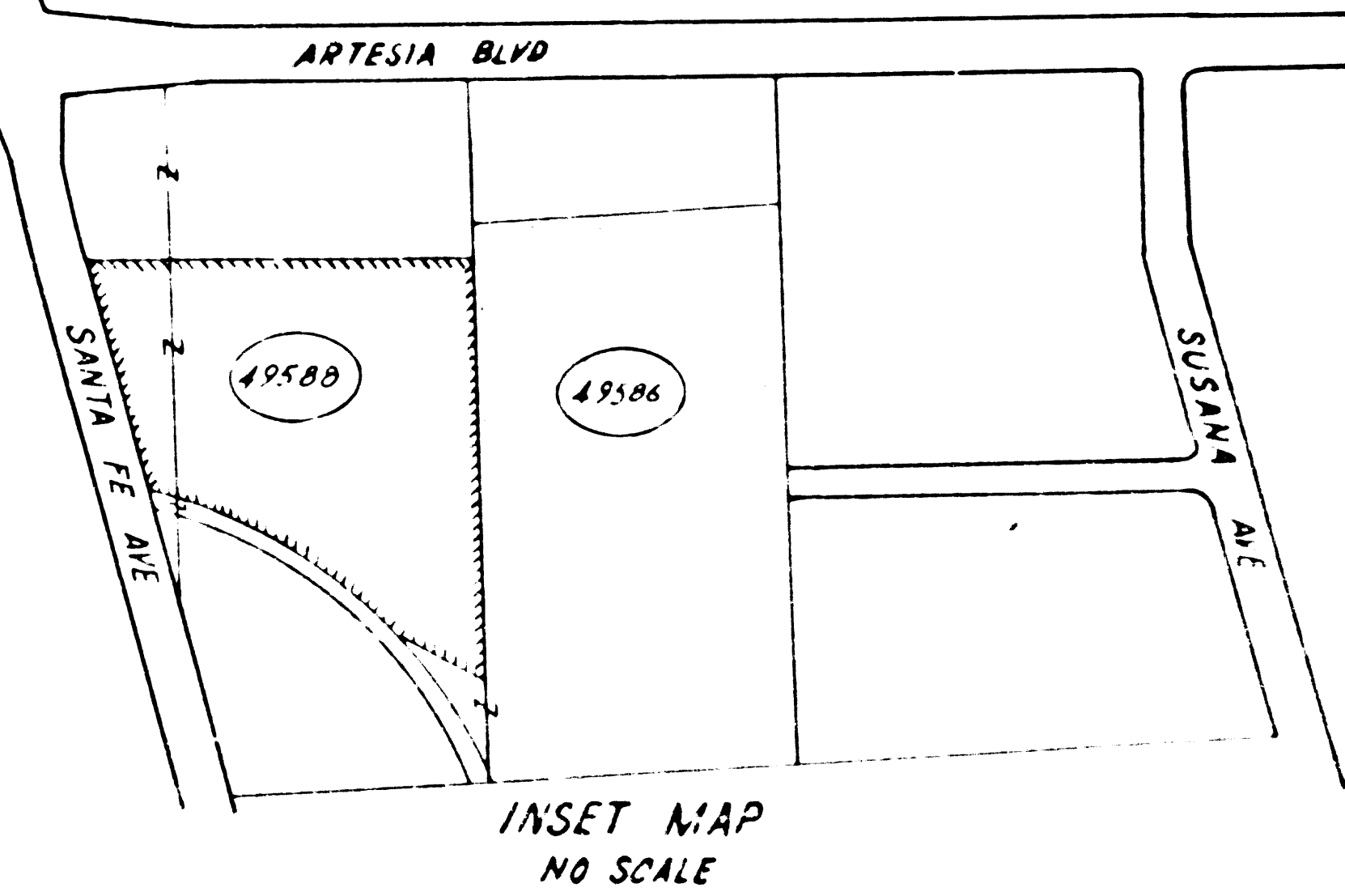
FOR CONTINUATION SEE MAP NO. F1091-1 AND F1091-2

FOR CONTINUATION SEE MAP NO. F1091-4

# COUNTY OF LOS ANGELES

M. R. 2 - 524/525 & M. R. 32 - 41/42

PARCEL NO.	GRANTOR OR GRANTEE	AREA*		INS.	RECORDING DATA		PARCEL NO.	GRANTOR OR GRANTEE	AREA*		INS.	RECORDING DATA		
		TO BE ACQUIRED	EXCESS		DATE	O. R.			TO BE ACQUIRED	EXCESS		DATE	O. R.	
8835	SASAKI BROS INC	165.300			FEE	7-29-65	D2294-585	REL 923	State to City of Compton				REL	5-27-71
49586	SCHOLLE CONT CORP	1.296	Ac		FEE	4-19-70	D4263-263							
49587	PRUD INS CO AMER	6.364	Ac		FEE	5-24-71	D5066-618							
49588-1	A. A. LANDER	1.019	Ac		FEE	2-6-70	D4626-916							
49588-2	LANDER to PACIFIC TEL	1.439			EAS	2-6-70	D4527-729							
49589	COMPTON J. C.	1.838	Ac		FEE	6-26-69	D4415-372							
49612	SASAKI BROS INC	2.281			FEE	10-21-70	D4372-301							
267	SASAKI, ET AL				FEE	11-1-51	11-21-11889							
268	CARSON & STATE CO				FEE	3-20-53	41260-386							
270 Pt 1	COMPTON J. C.				FEE	6-30-52	39276-285							
270 Pt 2	COMPTON J. C.				FEE	7-1-52	39141-13377							



FM 21529-3

ISSUE DATE: \_\_\_\_\_

**STATE OF CALIFORNIA**  
TRANSPORTATION AGENCY  
DEPARTMENT OF PUBLIC WORKS  
DIVISION OF HIGHWAYS

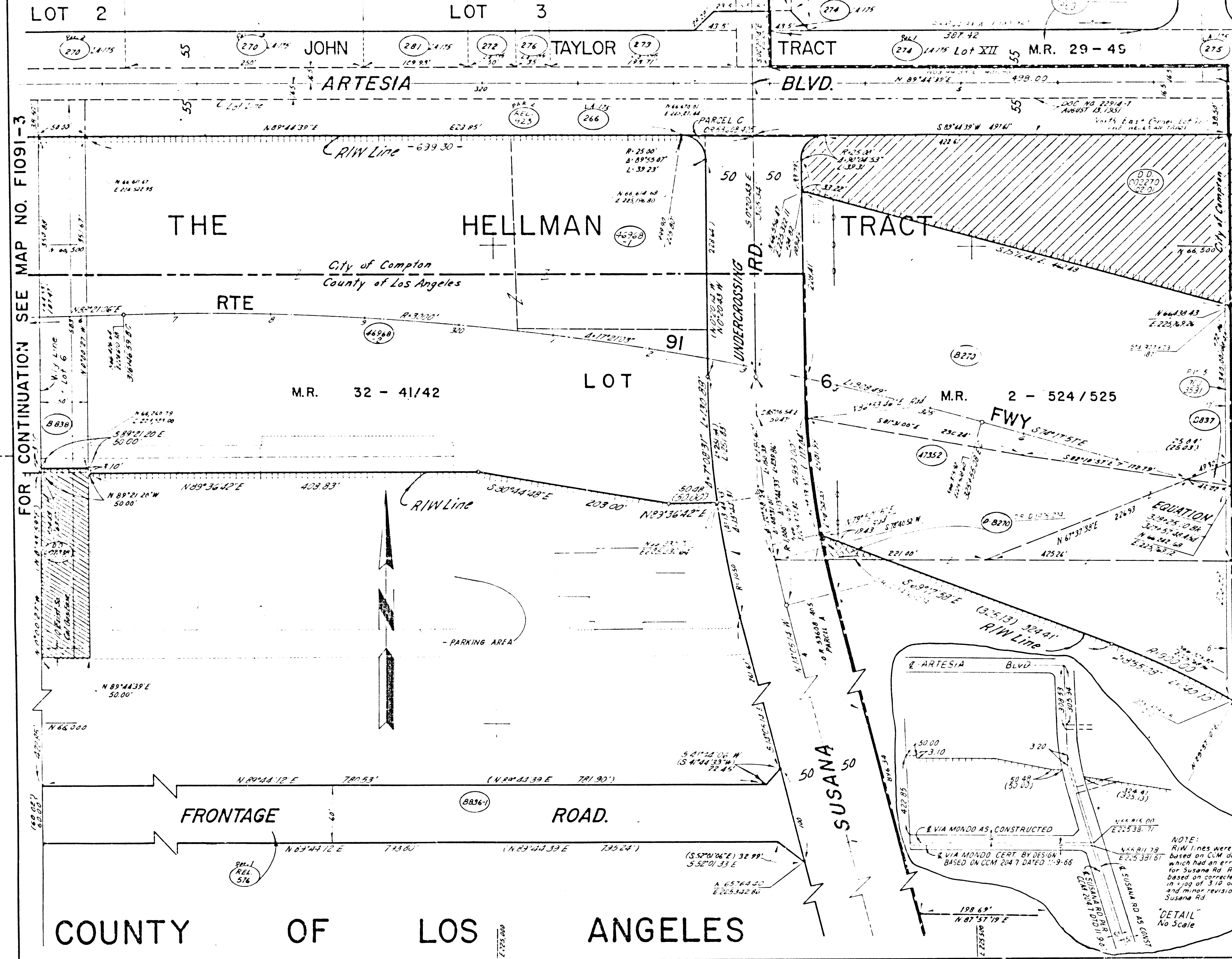
**R/W MAP**  
NO. F1091-3  
07-L.A.-91-10.5

DATE: 5-7-69

RWPE: R. SWAN      SR: R. FOLMING

**LEGEND:**  
 ACCESS DENIED       EXCLUDES STREET AREA  
 AREA IN SQUARE FEET UNLESS OTHERWISE NOTED  
 PREVIOUS RECORD DATA

# CITY OF COMPTON



PARCEL NO	GRANTOR OR GRANTEE	AREA	EXCESS		RECORDING DATA
			TOTAL	NS	
B270	Mountain View Dunes Inc	83,838			Fee 8-29-67 D258-882
B270	State to SE Develop Group				DD 11-9-66 2344-274
B836-1	Mountain View Dunes Inc	48,838	2,417		Fee 7-13-65 D274-55
Rel 576	State to County of L.A				Rel 4-27-67 123626-868
B837	SE Develop Group	571			Fee 6-11-65 D294-120
B838	R.D. Lenders, et al	27,226	2,662		Fee 11-17-65 1251-242
4696B	Mountain View Dunes Inc	53,716			Fee 7-13-65 12522-80
47352	National Medical Research of Compton	444			Fee 1-17-67 2529-427
703-353	Compton City	225,692			Fee 1-17-67 2529-427
REL 925	City of Compton				Rel 1-17-67 2529-427
85-2314	SCHULLE CORP				DD 4-27-67 2495-968
91-850	City of Compton				Fee 1-17-67 2529-427
266	Mountain View Dunes Inc				Fee 8-13-51 125-28
276	Lawrence C. Wallington				Fee 1-26-51 125-28
270 Pr. 2	Compton JC				Fee 7-1-52 125-28
270 Pr. 3	Compton JC				Fee 7-1-52 125-28
272	Dolly B. Mearns, et al				Fee 9-23-52 125-28
273	John D. Gandy, et al				Fee 8-21-51 125-28
274 Pr. 1	Ajax Imperial Inc				Fee 7-17-51 36780-434
274 Pr. 2	Ajax Imperial Inc				Fee 7-17-51 36780-434
275	William Newton Corp				Fee 4-25-51 37502-123
281	Green W. Groaton et al				Fee 10-15-51 37416-432

FOR CONTINUATION SEE MAP NO. F1091-3

FOR CONTINUATION SEE MAP NO. F1091-5

## FM 21529-4

ISSUE DATE

11-19-67
7-6-69
8-1-69
5-19-71
7-21-67

STATE OF CALIFORNIA  
TRANSPORTATION DEPARTMENT  
AGENCY PUBLIC WORKS  
DIVISION OF HIGHWAYS

**R/W MAP**  
NO. F1091-4  
07-L.A.-91-10.7

DATE 12-12-67  
SR R. FOLKINS

LEGEND:  EXISTING STREETS  
 EXISTING SQUARE FEET UNLESS OTHERWISE NOTED  
 EXISTING ROAD DATA

NOTE:  
R/W Lines were calculated based on CCM dated 11-9-66 which had an erroneous E for Susana Rd. Revisions based on corrected results in 1-19-67 at 3:10 on 01/19/67 and minor revisions at Susana Rd.

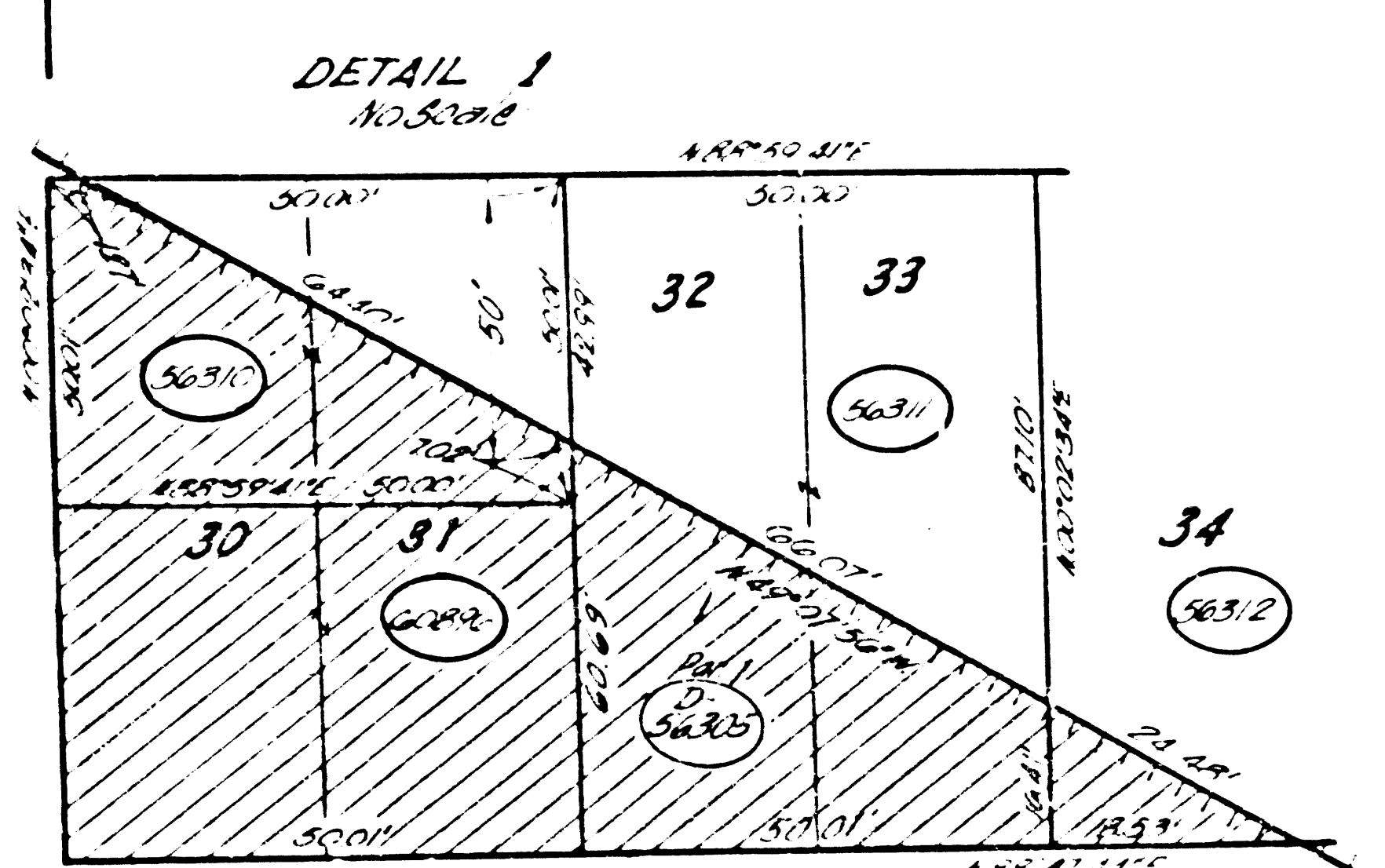
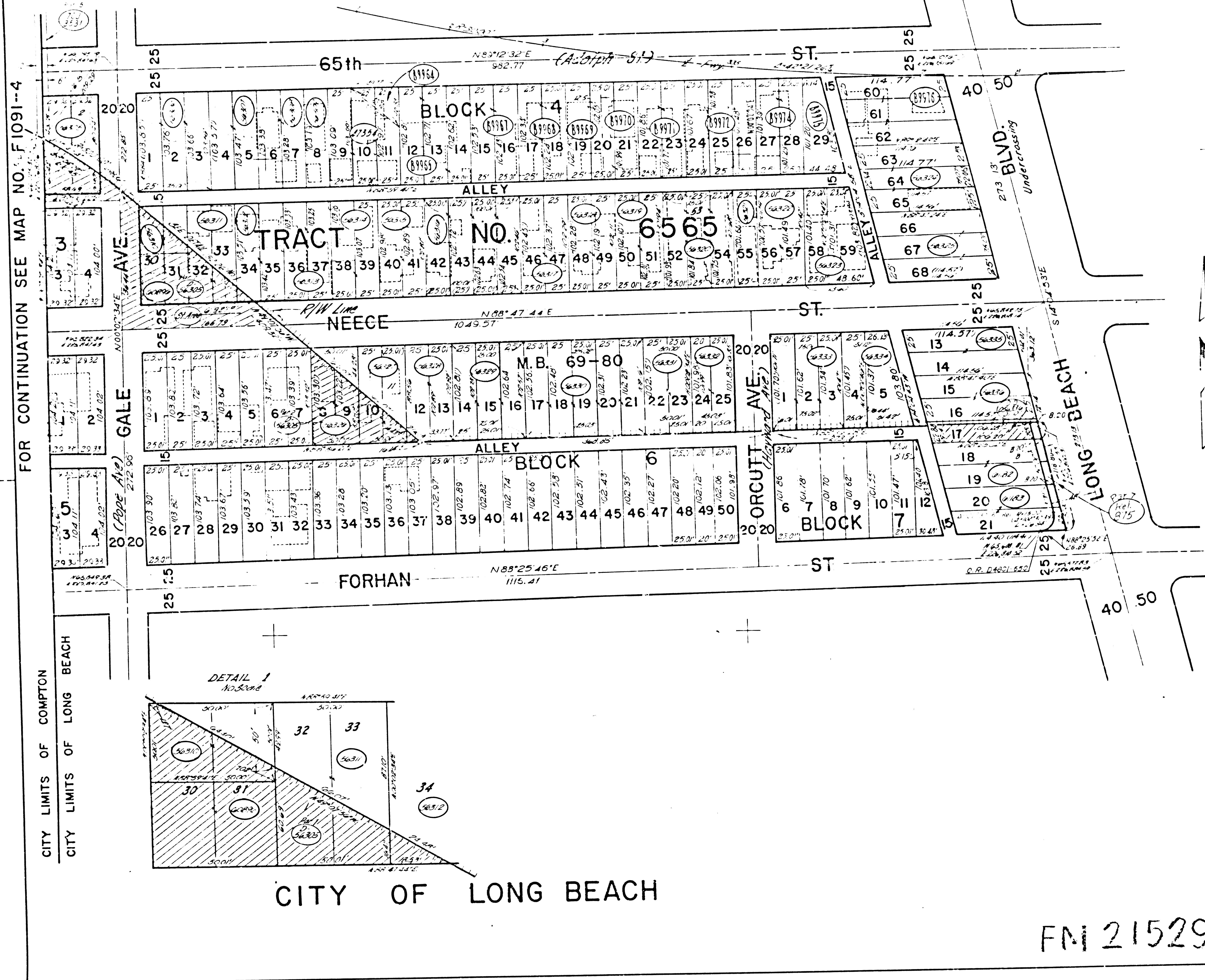
"DETAIL" No Scale



FOR CONTINUATION SEE MAP NO. F1091-5

STATE FEDERAL PROJECT NO. DATE  
 CALIF. STATE

FOR CONTINUATION SEE MAP NO. F1091-4



FOR CONTINUATION SEE MAP NO. F1091-7

PARCEL NO.	GRANTOR OR GRANTEE	AREA*		RECORDING DATA
		EXCESS	TOTAL	
4354	D. CALLESS ET UX	676	676	1952
4355	...	...	...	...
4356	...	...	...	...
4357	...	...	...	...
4358	...	...	...	...
4359	...	...	...	...
4360	...	...	...	...
4361	...	...	...	...
4362	...	...	...	...
4363	...	...	...	...
4364	...	...	...	...
4365	...	...	...	...
4366	...	...	...	...
4367	...	...	...	...
4368	...	...	...	...
4369	...	...	...	...
4370	...	...	...	...
4371	...	...	...	...
4372	...	...	...	...
4373	...	...	...	...
4374	...	...	...	...
4375	...	...	...	...
4376	...	...	...	...
4377	...	...	...	...
4378	...	...	...	...
4379	...	...	...	...
4380	...	...	...	...
4381	...	...	...	...
4382	...	...	...	...
4383	...	...	...	...
4384	...	...	...	...
4385	...	...	...	...
4386	...	...	...	...
4387	...	...	...	...
4388	...	...	...	...
4389	...	...	...	...
4390	...	...	...	...
4391	...	...	...	...
4392	...	...	...	...
4393	...	...	...	...
4394	...	...	...	...
4395	...	...	...	...
4396	...	...	...	...
4397	...	...	...	...
4398	...	...	...	...
4399	...	...	...	...
4400	...	...	...	...

ISSUE DATE  
 4-1-69  
 8-26-69  
 2-1-69  
 12-29-70  
 1-5-71  
 5-19-71

STATE OF CALIFORNIA  
 TRANSPORTATION DEPARTMENT OF  
 AGENCY PUBLIC WORKS  
 DIVISION OF HIGHWAYS

R/W MAP  
 NO. F1091-6  
 07-L.A.-91-11.1

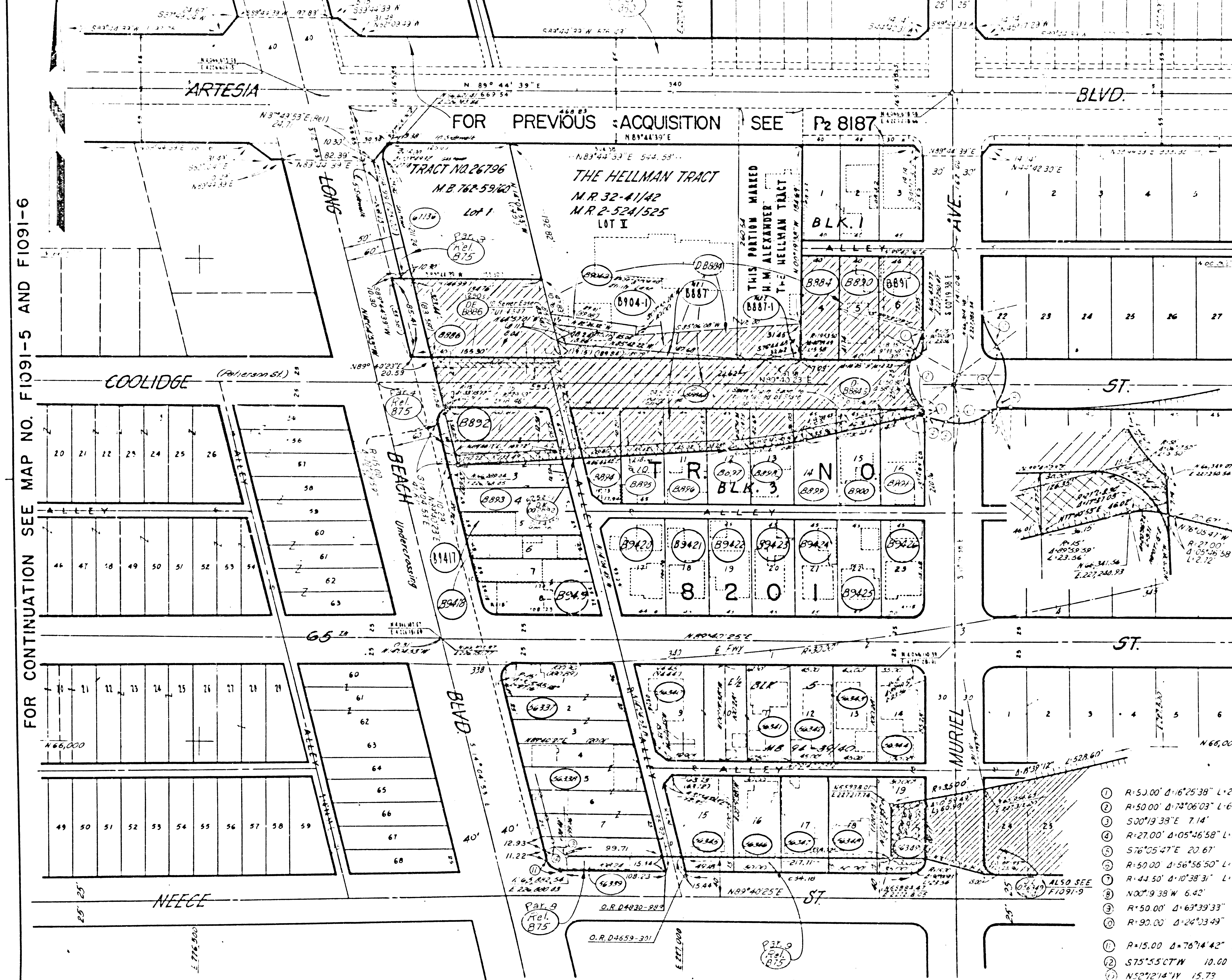
50 0 50 DATE 2-25-69  
 RWPE K. DUNN SR R. FOLKING

LEGEND:  
 ( ) AREA NOT SHOWN UNLESS OTHERWISE NOTED  
 ( ) AREA NOT SHOWN UNLESS OTHERWISE NOTED

FM 21529-6

# CITY OF LONG BEACH

STATE FEDERAL PROJECT NO. DATE  
7 CALIF. \_\_\_\_\_



FOR CONTINUATION SEE MAP NO. FIO91-5 AND FIO91-6

FOR CONTINUATION SEE MAP NO. FIO91-8 AND FIO91-9

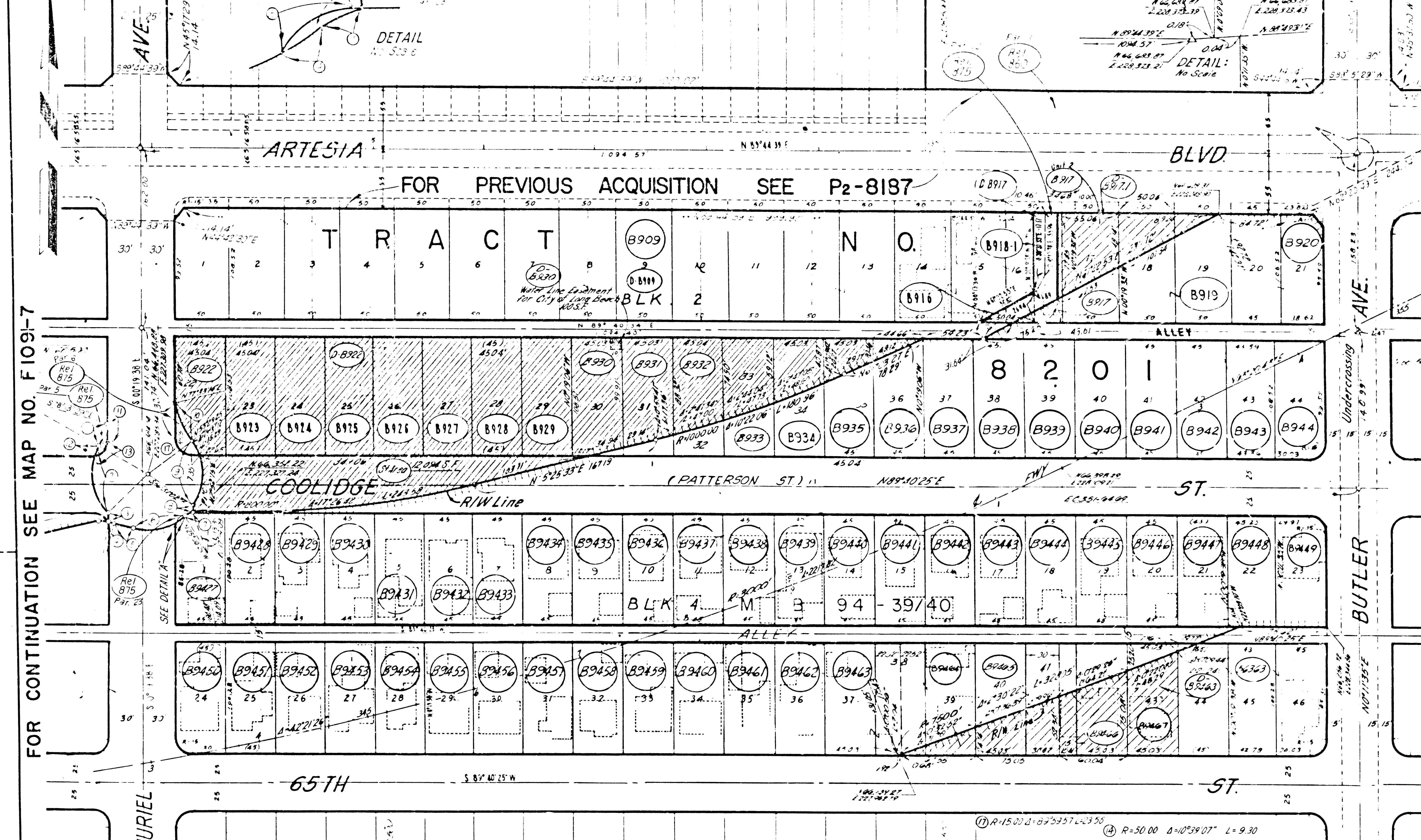
PARCEL NO.	GRANTOR OR GRANTEE	AREA*		RECORDING DATA	
		SQ. FT.	ACRES	DATE	O.R.
8884	...	...	...	...	...
8885	...	...	...	...	...
8886	...	...	...	...	...
8887	...	...	...	...	...
8888	...	...	...	...	...
8889	...	...	...	...	...
8890	...	...	...	...	...
8891	...	...	...	...	...
8892	...	...	...	...	...
8893	...	...	...	...	...
8894	...	...	...	...	...
8895	...	...	...	...	...
8896	...	...	...	...	...
8897	...	...	...	...	...
8898	...	...	...	...	...
8899	...	...	...	...	...
8900	...	...	...	...	...
8901	...	...	...	...	...
8902	...	...	...	...	...
8903	...	...	...	...	...
8904	...	...	...	...	...
8905	...	...	...	...	...
8906	...	...	...	...	...
8907	...	...	...	...	...
8908	...	...	...	...	...
8909	...	...	...	...	...
8910	...	...	...	...	...
8911	...	...	...	...	...
8912	...	...	...	...	...
8913	...	...	...	...	...
8914	...	...	...	...	...
8915	...	...	...	...	...
8916	...	...	...	...	...
8917	...	...	...	...	...
8918	...	...	...	...	...
8919	...	...	...	...	...
8920	...	...	...	...	...
8921	...	...	...	...	...
8922	...	...	...	...	...
8923	...	...	...	...	...
8924	...	...	...	...	...
8925	...	...	...	...	...
8926	...	...	...	...	...
8927	...	...	...	...	...
8928	...	...	...	...	...
8929	...	...	...	...	...
8930	...	...	...	...	...
8931	...	...	...	...	...
8932	...	...	...	...	...
8933	...	...	...	...	...
8934	...	...	...	...	...
8935	...	...	...	...	...
8936	...	...	...	...	...
8937	...	...	...	...	...
8938	...	...	...	...	...
8939	...	...	...	...	...
8940	...	...	...	...	...
8941	...	...	...	...	...
8942	...	...	...	...	...
8943	...	...	...	...	...
8944	...	...	...	...	...
8945	...	...	...	...	...
8946	...	...	...	...	...
8947	...	...	...	...	...
8948	...	...	...	...	...
8949	...	...	...	...	...
8950	...	...	...	...	...
8951	...	...	...	...	...
8952	...	...	...	...	...
8953	...	...	...	...	...
8954	...	...	...	...	...
8955	...	...	...	...	...
8956	...	...	...	...	...
8957	...	...	...	...	...
8958	...	...	...	...	...
8959	...	...	...	...	...
8960	...	...	...	...	...
8961	...	...	...	...	...
8962	...	...	...	...	...
8963	...	...	...	...	...
8964	...	...	...	...	...
8965	...	...	...	...	...
8966	...	...	...	...	...
8967	...	...	...	...	...
8968	...	...	...	...	...
8969	...	...	...	...	...
8970	...	...	...	...	...
8971	...	...	...	...	...
8972	...	...	...	...	...
8973	...	...	...	...	...
8974	...	...	...	...	...
8975	...	...	...	...	...
8976	...	...	...	...	...
8977	...	...	...	...	...
8978	...	...	...	...	...
8979	...	...	...	...	...
8980	...	...	...	...	...
8981	...	...	...	...	...
8982	...	...	...	...	...
8983	...	...	...	...	...
8984	...	...	...	...	...
8985	...	...	...	...	...
8986	...	...	...	...	...
8987	...	...	...	...	...
8988	...	...	...	...	...
8989	...	...	...	...	...
8990	...	...	...	...	...
8991	...	...	...	...	...
8992	...	...	...	...	...
8993	...	...	...	...	...
8994	...	...	...	...	...
8995	...	...	...	...	...
8996	...	...	...	...	...
8997	...	...	...	...	...
8998	...	...	...	...	...
8999	...	...	...	...	...
9000	...	...	...	...	...

## FM 21529-7

ISSUE DATE	STATE OF CALIFORNIA
5-18-69	TRANSPORTATION DEPARTMENT OF PUBLIC WORKS
5-29-69	AGENCY PUBLIC WORKS
10-11-72	DIVISION OF HIGHWAYS
9-3-74	
	<b>R/W MAP</b>
	NO. FIO91-7
	07-L.A.-91-11.2
	DATE 11-10-61
	RWPE K. DUNN SR. SR. R. FOLKINS.
<b>LEGEND:</b>	
+	ACCESS DENIED
+	EXCLUDES STREET AREA
*	AREA IN SQUARE FEET UNLESS OTHERWISE NOTED
( )	PREVIOUS RECORD DATA

- ① R=53.00' Δ=16°25'38" L=25.63'
- ② R=50.00' Δ=73°06'03" L=64.67'
- ③ 500°19'38"E 7.14'
- ④ R=27.00' Δ=05°46'58" L=2.72'
- ⑤ S76°05'47"E 20.67'
- ⑥ R=50.00' Δ=56°56'50" L=49.70'
- ⑦ R=44.50' Δ=10°38'31" L=8.26'
- ⑧ N00°19'38"W 6.42'
- ⑨ R=50.00' Δ=63°39'33" L=60.79'
- ⑩ R=90.00' Δ=24°03'49" L=37.80'
- ⑪ R=15.00' Δ=76°14'42" L=19.96'
- ⑫ S75°55'07"W 10.00'
- ⑬ N52°12'14"W 15.79'

# CITY OF LONG BEACH



FOR CONTINUATION SEE MAP NO. F1091-7

FOR CONTINUATION SEE MAP NO. F1516-5

FOR CONTINUATION SEE MAP NO. F1091-9

## FM 21529-8

PARCEL NO.	GRANTOR OR GRANTEE	AREA		INST.	RECORDING DATA		PARCEL NO.	GRANTOR OR GRANTEE	AREA		INST.	RECORDING DATA		PARCEL NO.	GRANTOR OR GRANTEE	AREA		INST.	RECORDING DATA		
		TO BE ACQUIRED	EXCESS		DATE	O.R.			TO BE ACQUIRED	EXCESS		DATE	O.R.			TO BE ACQUIRED	EXCESS		DATE	O.R.	
B919	H L BEAVERS ET UX	2.14	3.24	FE	11/20/68	D1228-324	B929	W F WILSON ET UX	2.22	2.22	FE	11/20/68	D1228-324	B939	M J WORTH ET UX	4.88	4.88	FE	11/20/68	D1228-324	
B916	S L ARSEN ET UX	7.7	5.7	FE	11/20/68	D1228-324	B930	H BOTTNER ET UX	2.22	3.68	FE	11/20/68	D1228-324	B940	F H ARMSTRONG ET UX	4.88	4.88	FE	11/20/68	D1228-324	
B917	L J MILLER ET AL	7.38	3.48	FE	11/20/68	D1228-324	B931	H BOTTNER ET UX	2.22	3.02	FE	11/20/68	D1228-324	B941	W H TAYLOR ET UX	4.88	4.88	FE	11/20/68	D1228-324	
D-8917	STATE TOLL GRASSIN ET UX			FD	11/20/68	D1228-324	B932	G A GALE ET UX	4.88	2.22	FE	11/20/68	D1228-324	B942	L E ARMSTRONG	4.88	4.88	FE	11/20/68	D1228-324	
B918	L G LARSEN ET UX	6.75	4.92	FE	11/20/68	D1228-324	B933	M J WORTH ET UX	4.88	1.38	FE	11/20/68	D1228-324	B943	G R McARTHUR ET UX	4.88	4.88	FE	11/20/68	D1228-324	
B919	LIVESTOCK BROS P&B INC	98.50	2.14	FE	4/30/63	D1978-69	B934	S P RICHMOND	4.88	1.22	FE	11/20/68	D1228-324	B944	J L RINGLE ET AL	4.78	4.78	FE	11/20/68	D1228-324	
B920	G E STENSRUD ET UX	8.80	8.80	FE	4/30/63	D1978-69	B935	H BOTTNER ET UX	4.88	4.88	FE	11/20/68	D1228-324	B945	J L CALHOON ET UX	4.88	4.88	FE	11/20/68	D1228-324	
B921	G E STENSRUD ET UX	2.22	4.13	FE	4/30/63	D1978-69	B936	F H ARMSTRONG ET UX	4.88	4.88	FE	11/20/68	D1228-324	B946	W H TAYLOR ET UX	4.88	4.88	FE	11/20/68	D1228-324	
B922	R C POWERS	2.22	4.88	FE	11/18/67	D1818-736	B937	G A GALE ET UX	4.88	4.88	FE	11/20/68	D1228-324	B947	ST RICHMOND ET UX	4.88	4.88	FE	11/20/68	D1228-324	
B923	R C POWERS	2.22	4.88	FE	11/18/67	D1818-736	B938	G A GALE ET UX	4.88	4.88	FE	11/20/68	D1228-324	B948	H W DEMARCO ET UX	4.88	4.88	FE	11/20/68	D1228-324	
B924	T L WILLIAMS ET UX	4.88	4.88	FE	11/20/68	D1228-324	B939	S P RICHMOND	4.88	4.88	FE	11/20/68	D1228-324	B949	L A EDY	4.88	4.88	FE	11/20/68	D1228-324	
B925	H J SCHULRE ET UX	4.88	4.88	FE	11/20/68	D1228-324	B940	H BOTTNER ET UX	4.88	4.88	FE	11/20/68	D1228-324	B950	L A EDY	4.88	4.88	FE	11/20/68	D1228-324	
B926	L A EDY	4.88	4.88	FE	11/20/68	D1228-324	B941	F H ARMSTRONG ET UX	4.88	4.88	FE	11/20/68	D1228-324								
B927	H F ANOLL ET UX	4.88	4.88	FE	11/20/68	D1228-324	B942	M J WORTH ET UX	4.88	4.88	FE	11/20/68	D1228-324								
B928	W T TANALA ET UX	4.88	4.88	FE	11/20/68	D1228-324	B943	G A GALE ET UX	4.88	4.88	FE	11/20/68	D1228-324								
B929	ST RICHMOND ET UX	4.88	4.88	FE	11/20/68	D1228-324	B944	S P RICHMOND	4.88	4.88	FE	11/20/68	D1228-324								
B930	H W DEMARCO ET UX	4.88	4.88	FE	11/20/68	D1228-324	B945	H BOTTNER ET UX	4.88	4.88	FE	11/20/68	D1228-324								

- ① R=90.00' Δ=16°25'38" L=25.80'
- ② R=50.00' Δ=74°06'02" L=64.67'
- ③ S00°19'38"E 7.14'
- ④ R=27.00' Δ=05°46'38" L=2.72'
- ⑤ S16°05'41"E 20.67'
- ⑥ R=50.00' Δ=56°56'50" L=49.70'
- ⑦ R=44.50' Δ=10°38'31" L=8.26'
- ⑧ N00°19'38"W 6.42'
- ⑨ R=50.00' Δ=63°39'39" L=60.75'
- ⑩ R=90.00' Δ=24°03'39" L=37.80'
- ⑪ N00°19'38"W 16.47'
- ⑫ R=50.00' Δ=09°33'59" L=8.34'
- ⑬ R=15.00' Δ=79°34'32" L=20.23'

STATE OF CALIFORNIA  
TRANSPORTATION DEPARTMENT OF  
AGENCY PUBLIC WORKS  
DIVISION OF HIGHWAYS

### R/W MAP NO. F1091-8 07-L.A.-91-11.3

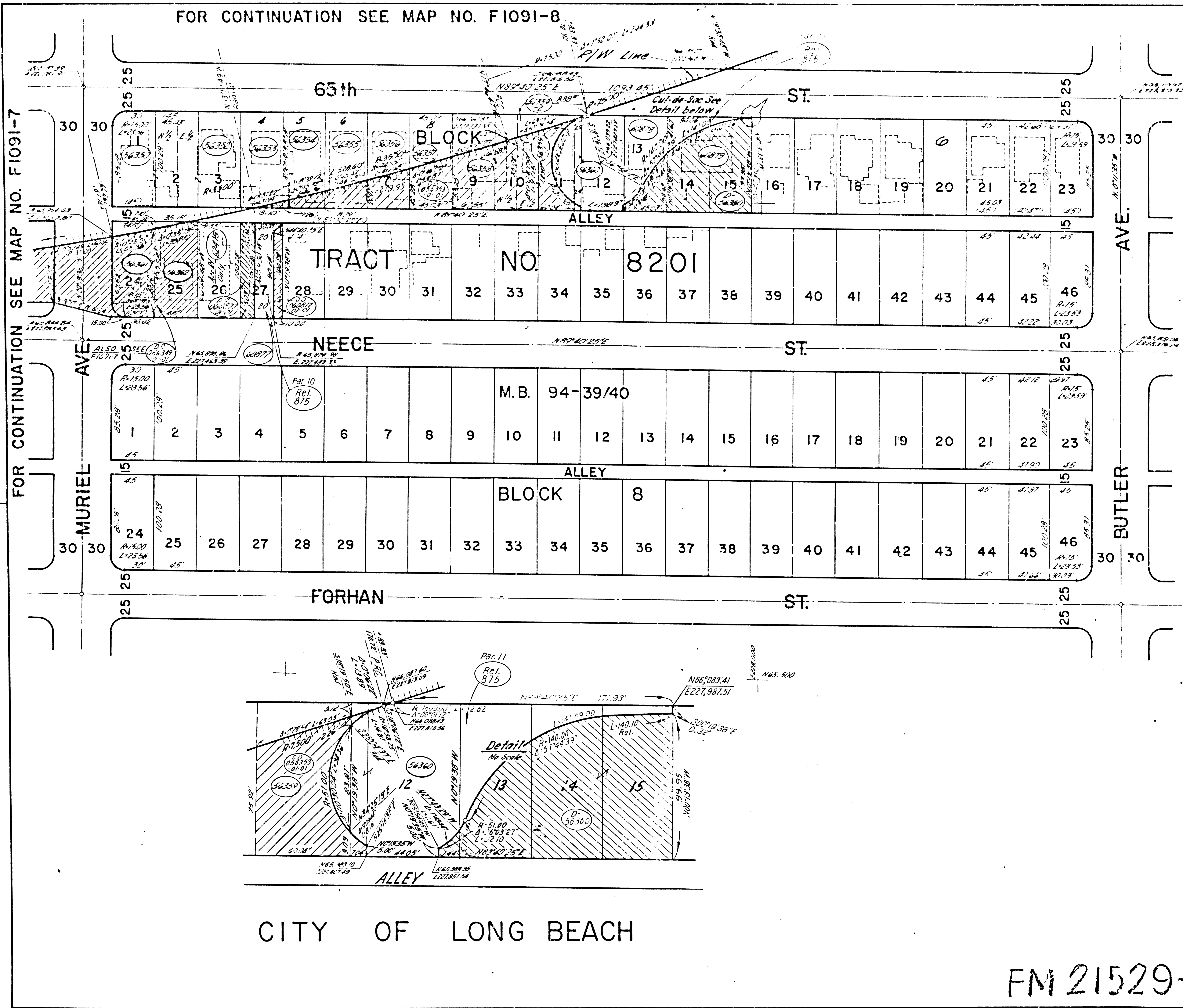
DATE 11-10-61  
RWPE K. DUNN SR R. FOLKINS

**LEGEND:**

- ① 1/4" = 100'
- ② 1/4" = 100'
- ③ 1/4" = 100'
- ④ 1/4" = 100'
- ⑤ 1/4" = 100'
- ⑥ 1/4" = 100'
- ⑦ 1/4" = 100'
- ⑧ 1/4" = 100'
- ⑨ 1/4" = 100'
- ⑩ 1/4" = 100'
- ⑪ 1/4" = 100'
- ⑫ 1/4" = 100'
- ⑬ 1/4" = 100'
- ⑭ 1/4" = 100'
- ⑮ 1/4" = 100'
- ⑯ 1/4" = 100'
- ⑰ 1/4" = 100'
- ⑱ 1/4" = 100'
- ⑲ 1/4" = 100'
- ⑳ 1/4" = 100'
- ㉑ 1/4" = 100'
- ㉒ 1/4" = 100'
- ㉓ 1/4" = 100'
- ㉔ 1/4" = 100'
- ㉕ 1/4" = 100'
- ㉖ 1/4" = 100'
- ㉗ 1/4" = 100'
- ㉘ 1/4" = 100'
- ㉙ 1/4" = 100'
- ㉚ 1/4" = 100'
- ㉛ 1/4" = 100'
- ㉜ 1/4" = 100'
- ㉝ 1/4" = 100'
- ㉞ 1/4" = 100'
- ㉟ 1/4" = 100'
- ㊱ 1/4" = 100'
- ㊲ 1/4" = 100'
- ㊳ 1/4" = 100'
- ㊴ 1/4" = 100'
- ㊵ 1/4" = 100'
- ㊶ 1/4" = 100'
- ㊷ 1/4" = 100'
- ㊸ 1/4" = 100'
- ㊹ 1/4" = 100'
- ㊺ 1/4" = 100'
- ㊻ 1/4" = 100'
- ㊼ 1/4" = 100'
- ㊽ 1/4" = 100'
- ㊾ 1/4" = 100'
- ㊿ 1/4" = 100'



FOR CONTINUATION SEE MAP NO. F1091-8



STATE FEDERAL PROJECT NO. DATE

CALIF.

PARCEL NO.	GRANTOR OR GRANTEE	AREA*		INST.	RECORDING DATA	
		EXCESS	TOTAL		DATE	CR
6352	Bohler	6.74	6.74	Fee	5-8-70	2411-104
6353	Hill	6.77	6.77	Fee	7-7-70	24699-125
6354	Verdine	45.0	45.0	Fee	10-26-70	24747-174
6354	Goodman	45.0	45.0	Fee	7-25-70	24722-104
6355	Steiner	45.0	45.0	Fee	7-22-69	24597-107
6356	Poy	45.0	45.0	Fee	1-30-69	24444-187
6357	Hoff	45.0	45.0	Fee	1-28-69	24407-143
6358	James	67.3	67.3	Fee	4-13-70	24683-639
6359	Hanks	6.02	6.02	Fee	7-7-70	24775-124
6360	Everett	5.26	5.26	Fee	11-18-69	24554-125
6361	Shillman	4.46	4.46	Fee	9-4-70	24742-10
6362	Stewart	45.6	45.6	Fee	7-13-70	24689-104
6377	Bohler	4.516	4.516	Fee	1-13-69	24501-104
6378	Finley	4.516	4.516	Fee	11-10-69	24440-125
6379	English	9.031	9.031	Fee	7-24-70	24948-104
6379	Everett	Access R/W Only	4.516	Fee	2-22-71	25114-125
6379	KEENE?			DD	12-18-73	25114-125
6380	Houston			DD	4-12-72	25041-104
6380	EVERETT			DD	3-30-73	25444-125
6380	MASTENY			DD	4-9-73	25614-125
6380	SEE MAP F1091-7					
6380	Rel. 875 See Map No. F1091-5					

ISSUE DATE

5-14-69

5-28-69

8-20-70

7-28-70

7-2-71

5-19-71

10-17-72

3-13-73

STATE OF CALIFORNIA  
TRANSPORTATION DEPARTMENT OF  
AGENCY PUBLIC WORKS  
DIVISION OF HIGHWAYS

**R/W MAP**  
NO. F1091-9  
07-L.A.-91-11.4

50 0 50 DATE 2-25-69  
RWPE K. DUNN SR R. EOLKIVS

LEGEND:      ACCESS DENIED      EXCLUDES STREET AREA  
     AREA IN SQUARE FEET UNLESS OTHERWISE NOTED  
     ( ) PREV. CUS. RECORD DATA

FM 21529-9