



# B E A C H

BLOCK

21

12

VE

# ALGIN TRACT

5

4

3

2

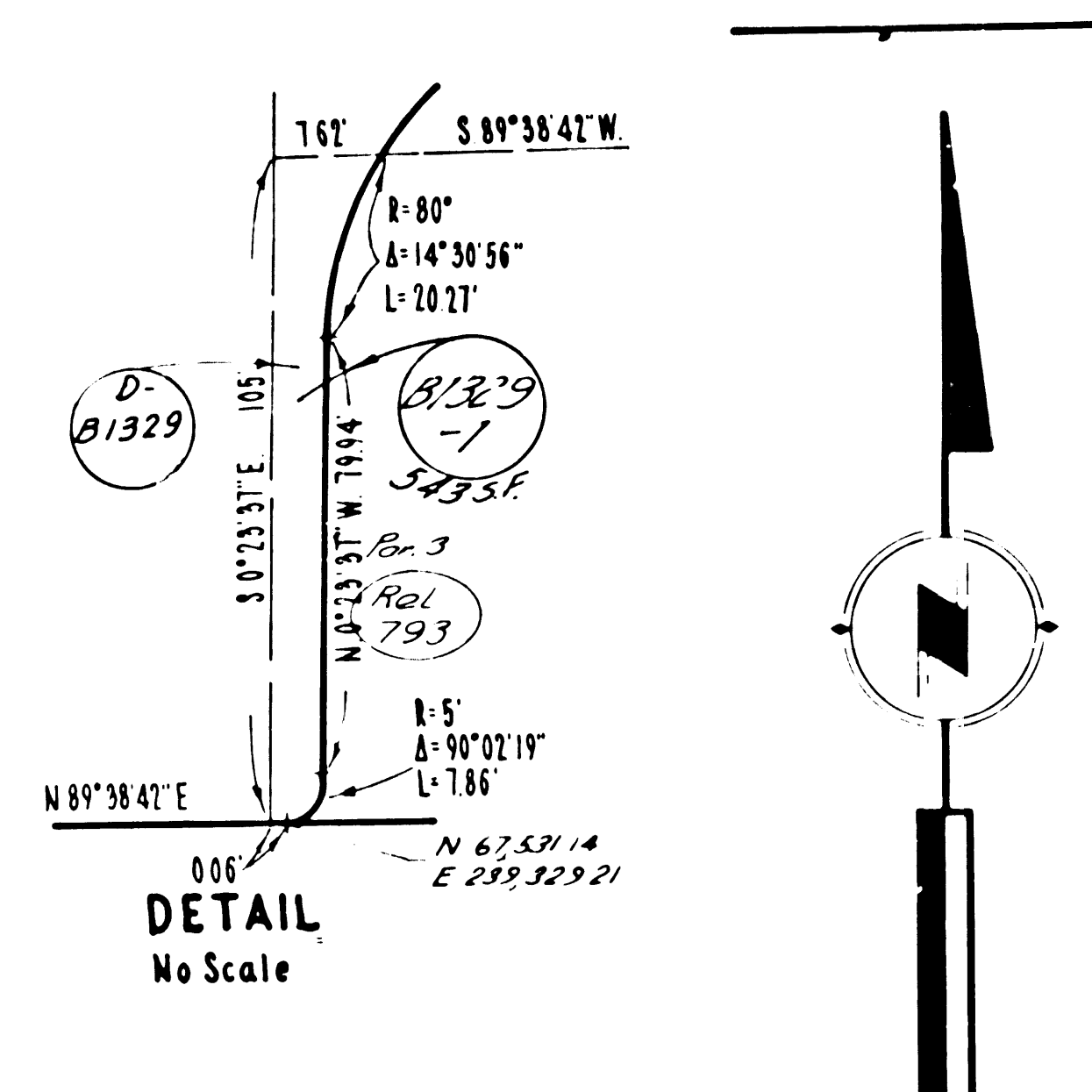
RAILROAD

N 0° 24' 41" W

PACIFIC OVERHEAD

UNION

ST. N 89° 38' 36" E



T

of

5/16

# C A L I F O R N I A

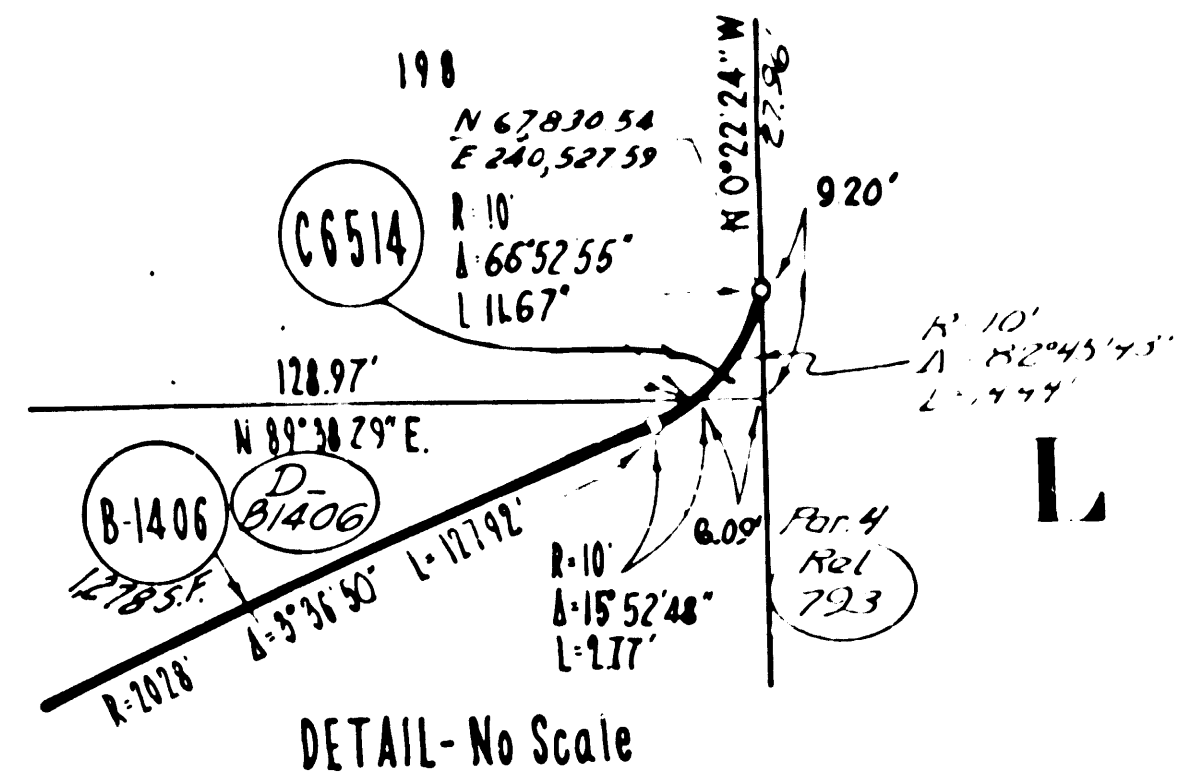
ST. N 89° 38' 36" E 1320.83

# COOPERATIVE

|   |  |  |   |   |
|---|--|--|---|---|
| 98-3822<br>B372<br>Admiral Paper Box Corp.<br>Feb 11-24-59<br>F62-658 | B319<br>P.H. Valve, Inc.<br>Feb 11-24-63<br>F65-119-203      | B3122<br>Hogg's Dams, Inc.<br>Feb 11-24-63<br>F65-119-203    | B329<br>Evo G. Huffine<br>Feb 10-27-64<br>D2670-370   | B336<br>Fannie M. Hill<br>Feb 10-27-64<br>D2670-370           |
| B3174<br>Union Pacific R.R.<br>Feb 13-21-62<br>D2534-257              | B320<br>Kings Ind. Inc.<br>Feb 11-24-63<br>D1998-770         | B323<br>William P. Reid, et al.<br>Feb 11-24-63<br>D1970-150 | B329-1<br>Evo G. Huffine<br>Feb 10-27-64<br>D2670-370 | B327<br>James R. West, et al.<br>Feb 13-21-62<br>D2740-861    |
| B318<br>Herman Bros.<br>Feb 11-24-63<br>D150-601                      | B321<br>Ray J. Buchanan, et al.<br>Feb 11-24-63<br>D1787-870 | B324<br>Berester Gray, et al.<br>Feb 11-24-63<br>D2210-267   | B329-2<br>Evo G. Huffine<br>Feb 10-27-64<br>D2670-370 | B330-1<br>L.W. Hoesgaard, et al.<br>Feb 10-27-64<br>D2700-248 |
|   |  |  | B329-3<br>Evo G. Huffine<br>Feb 10-27-64<br>D2670-370 | B330-2<br>L.W. Hoesgaard, et al.<br>Feb 10-27-64<br>D2700-248 |
|   |  |  | B329-4<br>Evo G. Huffine<br>Feb 10-27-64<br>D2670-370 | B330-3<br>L.W. Hoesgaard, et al.<br>Feb 10-27-64<br>D2700-248 |
|   |  |  | B329-5<br>Evo G. Huffine<br>Feb 10-27-64<br>D2670-370 | B330-4<br>L.W. Hoesgaard, et al.<br>Feb 10-27-64<br>D2700-248 |
|   |  |  | B329-6<br>Evo G. Huffine<br>Feb 10-27-64<br>D2670-370 | B330-5<br>L.W. Hoesgaard, et al.<br>Feb 10-27-64<br>D2700-248 |

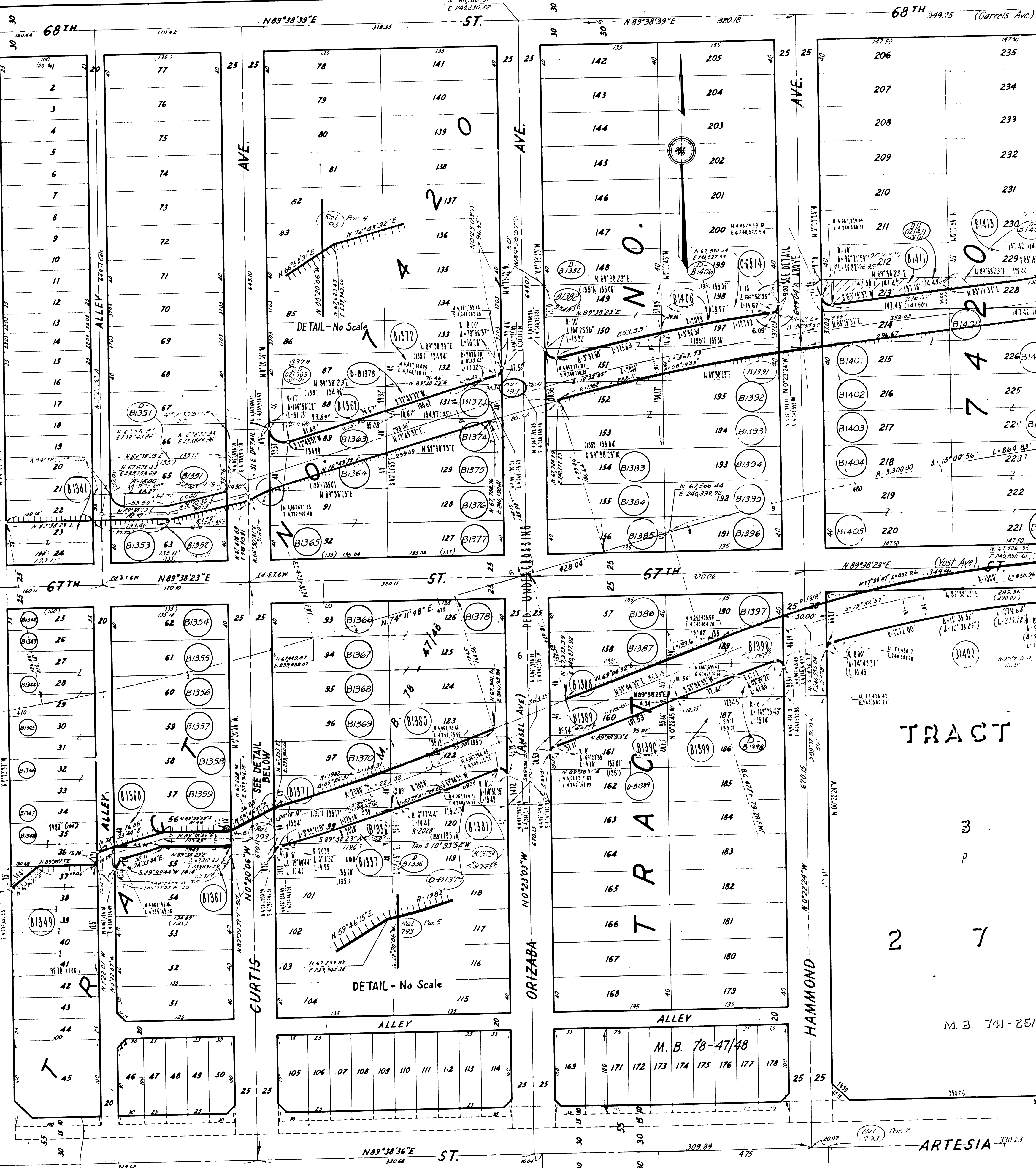
A 2  
 OF  
 A 7  
 F.M. 215311

CITY OF LONG



BLVD. NO. 2137 W

50



TRACT

M. B. 741-25/2

ARTESIA

SEE P2 8187 FOR PARCELS IN THIS AREA

COLONY TRACT

M. R. 21 - 15/16

- |         |   |         |                                    |         |                                    |         |   |         |                                    |         |                                     |
|---------|---|---------|------------------------------------|---------|------------------------------------|---------|---|---------|------------------------------------|---------|-------------------------------------|
| (B1328) | State to Fred Daniels, Jr. et al. Fee 27.43 | (B1365) | Jacob Wagner, Jr. et al. Fee 29.64 | (B1371) | Howard E. Bessler et al. Fee 10.64 | (B1379) | State to Lloyd C. Mays et al. Fee 3.13-63 | (B1387) | Charles Rogers et al. Fee 23.43    | (B1394) | Ronald A. Bagman et al. Fee 4.18-63 |
| (B1329) | State to Lloyd C. Mays et al. Fee 3.13-63   | (B1366) | Katarina Wagner et al. Fee 29.64   | (B1372) | Howard E. Bessler et al. Fee 10.64 | (B1380) | Lloyd C. Mays et al. Fee 3.13-63          | (B1388) | Albert Alvarez et al. Fee 12.44    | (B1395) | Alfred E. Fasco et al. Fee 4.62     |
| (B1330) | State to Lloyd C. Mays et al. Fee 3.13-63   | (B1367) | Paul H. Darr et al. Fee 29.64      | (B1373) | Howard E. Bessler et al. Fee 10.64 | (B1381) | Robert Heath Mays et al. Fee 12.44        | (B1389) | Francis L. Basile et al. Fee 10.44 | (B1396) | Henry F. Hayes et al. Fee 3.78      |
| (B1331) | State to Lloyd C. Mays et al. Fee 3.13-63   | (B1368) | Paul H. Darr et al. Fee 29.64      | (B1374) | Howard E. Bessler et al. Fee 10.64 | (B1382) | Robert Heath Mays et al. Fee 12.44        | (B1390) | Albert Craft et al. Fee 10.44      | (B1397) | Paul Barker Bobb et al. Fee 4.13    |
| (B1332) | State to Lloyd C. Mays et al. Fee 3.13-63   | (B1369) | Paul H. Darr et al. Fee 29.64      | (B1375) | Howard E. Bessler et al. Fee 10.64 | (B1383) | Robert Heath Mays et al. Fee 12.44        | (B1391) | Albert Craft et al. Fee 10.44      | (B1398) | David K. Brown et al. Fee 2.22-60   |
| (B1333) | State to Lloyd C. Mays et al. Fee 3.13-63   | (B1370) | Paul H. Darr et al. Fee 29.64      | (B1376) | Howard E. Bessler et al. Fee 10.64 | (B1384) | Robert Heath Mays et al. Fee 12.44        | (B1392) | Albert Craft et al. Fee 10.44      | (B1399) | Paul Barker Bobb et al. Fee 4.13    |
| (B1334) | State to Lloyd C. Mays et al. Fee 3.13-63   | (B1371) | Paul H. Darr et al. Fee 29.64      | (B1377) | Howard E. Bessler et al. Fee 10.64 | (B1385) | Robert Heath Mays et al. Fee 12.44        | (B1393) | Albert Craft et al. Fee 10.44      | (B1400) | Paul Barker Bobb et al. Fee 4.13    |
| (B1335) | State to Lloyd C. Mays et al. Fee 3.13-63   | (B1372) | Paul H. Darr et al. Fee 29.64      | (B1378) | Howard E. Bessler et al. Fee 10.64 | (B1386) | Robert Heath Mays et al. Fee 12.44        | (B1394) | Albert Craft et al. Fee 10.44      | (B1401) | Paul Barker Bobb et al. Fee 4.13    |
| (B1336) | State to Lloyd C. Mays et al. Fee 3.13-63   | (B1373) | Paul H. Darr et al. Fee 29.64      | (B1379) | Howard E. Bessler et al. Fee 10.64 | (B1387) | Robert Heath Mays et al. Fee 12.44        | (B1395) | Albert Craft et al. Fee 10.44      | (B1402) | Paul Barker Bobb et al. Fee 4.13    |
| (B1337) | State to Lloyd C. Mays et al. Fee 3.13-63   | (B1374) | Paul H. Darr et al. Fee 29.64      | (B1380) | Howard E. Bessler et al. Fee 10.64 | (B1388) | Robert Heath Mays et al. Fee 12.44        | (B1396) | Albert Craft et al. Fee 10.44      | (B1403) | Paul Barker Bobb et al. Fee 4.13    |
| (B1338) | State to Lloyd C. Mays et al. Fee 3.13-63   | (B1375) | Paul H. Darr et al. Fee 29.64      | (B1381) | Howard E. Bessler et al. Fee 10.64 | (B1389) | Robert Heath Mays et al. Fee 12.44        | (B1397) | Albert Craft et al. Fee 10.44      | (B1404) | Paul Barker Bobb et al. Fee 4.13    |
| (B1339) | State to Lloyd C. Mays et al. Fee 3.13-63   | (B1376) | Paul H. Darr et al. Fee 29.64      | (B1382) | Howard E. Bessler et al. Fee 10.64 | (B1390) | Robert Heath Mays et al. Fee 12.44        | (B1398) | Albert Craft et al. Fee 10.44      | (B1405) | Paul Barker Bobb et al. Fee 4.13    |
| (B1340) | State to Lloyd C. Mays et al. Fee 3.13-63   | (B1377) | Paul H. Darr et al. Fee 29.64      | (B1383) | Howard E. Bessler et al. Fee 10.64 | (B1391) | Robert Heath Mays et al. Fee 12.44        | (B1399) | Albert Craft et al. Fee 10.44      | (B1406) | Paul Barker Bobb et al. Fee 4.13    |
| (B1341) | State to Lloyd C. Mays et al. Fee 3.13-63   | (B1378) | Paul H. Darr et al. Fee 29.64      | (B1384) | Howard E. Bessler et al. Fee 10.64 | (B1392) | Robert Heath Mays et al. Fee 12.44        | (B1400) | Albert Craft et al. Fee 10.44      | (B1407) | Paul Barker Bobb et al. Fee 4.13    |
| (B1342) | State to Lloyd C. Mays et al. Fee 3.13-63   | (B1379) | Paul H. Darr et al. Fee 29.64      | (B1385) | Howard E. Bessler et al. Fee 10.64 | (B1393) | Robert Heath Mays et al. Fee 12.44        | (B1401) | Albert Craft et al. Fee 10.44      | (B1408) | Paul Barker Bobb et al. Fee 4.13    |
| (B1343) | State to Lloyd C. Mays et al. Fee 3.13-63   | (B1380) | Paul H. Darr et al. Fee 29.64      | (B1386) | Howard E. Bessler et al. Fee 10.64 | (B1394) | Robert Heath Mays et al. Fee 12.44        | (B1402) | Albert Craft et al. Fee 10.44      | (B1409) | Paul Barker Bobb et al. Fee 4.13    |
| (B1344) | State to Lloyd C. Mays et al. Fee 3.13-63   | (B1381) | Paul H. Darr et al. Fee 29.64      | (B1387) | Howard E. Bessler et al. Fee 10.64 | (B1395) | Robert Heath Mays et al. Fee 12.44        | (B1403) | Albert Craft et al. Fee 10.44      | (B1410) | Paul Barker Bobb et al. Fee 4.13    |
| (B1345) | State to Lloyd C. Mays et al. Fee 3.13-63   | (B1382) | Paul H. Darr et al. Fee 29.64      | (B1388) | Howard E. Bessler et al. Fee 10.64 | (B1396) | Robert Heath Mays et al. Fee 12.44        | (B1404) | Albert Craft et al. Fee 10.44      | (B1411) | Paul Barker Bobb et al. Fee 4.13    |
| (B1346) | State to Lloyd C. Mays et al. Fee 3.13-63   | (B1383) | Paul H. Darr et al. Fee 29.64      | (B1389) | Howard E. Bessler et al. Fee 10.64 | (B1397) | Robert Heath Mays et al. Fee 12.44        | (B1405) | Albert Craft et al. Fee 10.44      | (B1412) | Paul Barker Bobb et al. Fee 4.13    |

Hall 0-1-64  
est of us 7-23-64  
w Nylund ux

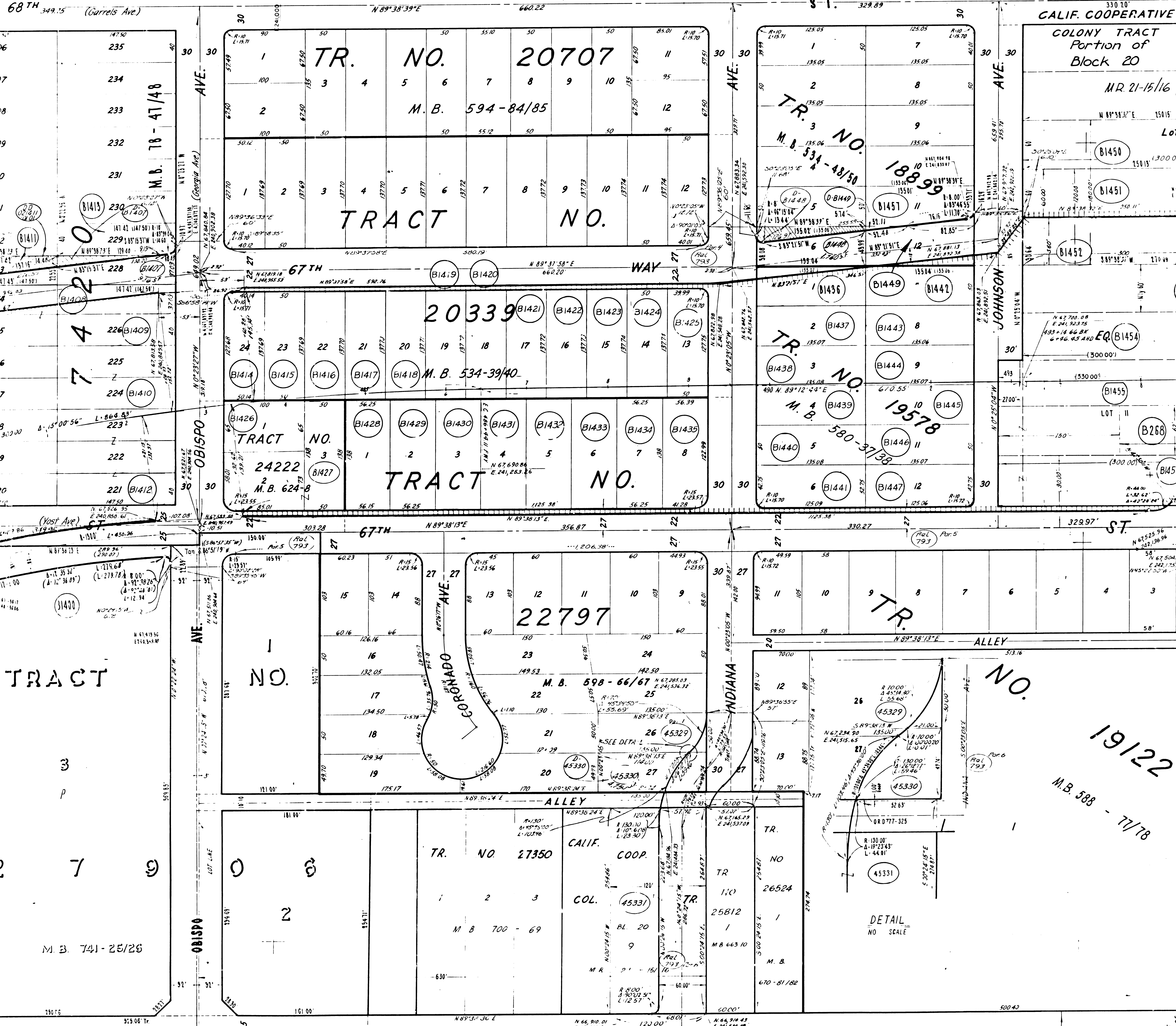
IVE

PARAMOUNT

50

50

O N G B E A C H



|  |   |   |  |   |  |   |  |   |   |   |   |   |   |   |  |   |  |   |   |  |   |  |  |   |   |   |   |   |  |   |  |  |   |  |   |  |  |  |  |  |  |   |  |  |  |  |   |   |   |   |  |  |   |   |   |   |   |                                       |                              |                              |                              |                              |                              |                              |                              |                              |                              |                              |                              |                              |                              |                              |                              |                              |                              |                              |                              |                              |                              |                              |                              |                              |                              |                              |                              |                              |                              |                              |                              |                              |                              |                              |                              |                              |                              |                              |                              |                              |                              |                              |                              |
|--|---|---|--|---|--|---|--|---|---|---|---|---|---|---|--|---|--|---|---|--|---|--|--|---|---|---|---|---|--|---|--|--|---|--|---|--|--|--|--|--|--|---|--|--|--|--|---|---|---|---|--|--|---|---|---|---|---|---------------------------------------|------------------------------|------------------------------|------------------------------|------------------------------|------------------------------|------------------------------|------------------------------|------------------------------|------------------------------|------------------------------|------------------------------|------------------------------|------------------------------|------------------------------|------------------------------|------------------------------|------------------------------|------------------------------|------------------------------|------------------------------|------------------------------|------------------------------|------------------------------|------------------------------|------------------------------|------------------------------|------------------------------|------------------------------|------------------------------|------------------------------|------------------------------|------------------------------|------------------------------|------------------------------|------------------------------|------------------------------|------------------------------|------------------------------|------------------------------|------------------------------|------------------------------|------------------------------|------------------------------|
| (B1394) Ronald A. Bigelow, et al. Fee. D. 1976-301 | (B1400) Cul Prop Investments, Inc. Fee. D. 1973-424 | (B1401) Oresto C. Flores, et al. Fee. D. 1946-444 | (B1402) John Bender, et al. Fee. D. 1973-164 | (B1403) Ethel M. Cargel. Fee. D. 1966-340 | (B1404) Walter A. Sharger, et al. Fee. D. 1961-485 | (B1405) Lawrence H. Walloway, et al. Fee. D. 1962-088 | (B1406) Carl V. Eggleston, et al. Fee. D. 1970-369 | (B1407) Eugene E. Conroy, et al. Fee. D. 1967-496 | (B1408) State to F.F. Reed, et al. Fee. D. 1971-324 | (B1409) Paul A. Regier, et al. Fee. D. 1975-749 | (B1410) Louis D. Hays, et al. Fee. D. 1973-63 | (B1411) Donald D. Nagley, et al. Fee. D. 1973-743 | (B1412) Hans A. Dahl, et al. Fee. D. 1973-314 | (B1413) Esther La Flora. Fee. D. 1973-314 | (B1414) Francis E. Reed, et al. Fee. D. 1973-314 | (B1415) William Howard Horns, et al. Fee. D. 1973-314 | (B1416) Verma M. Hall, et al. Fee. D. 1973-314 | (B1417) Gerald J. Nampersky. Fee. D. 1973-314 | (B1418) Fredrick Hill, Jr., et al. Fee. D. 1973-314 | (B1419) Anthony Rizzo, et al. Fee. D. 1973-314 | (B1420) John L. Hayes, Jr., et al. Fee. D. 1973-314 | (B1421) John P. Sikes, et al. Fee. D. 1973-314 | (B1422) Isabel M. Rivera. Fee. D. 1973-314 | (B1423) George A. Abareash, et al. Fee. D. 1973-314 | (B1424) Adolph De la Zerda, et al. Fee. D. 1973-314 | (B1425) Gilbert D. Siggins, et al. Fee. D. 1973-314 | (B1426) State to C. Rollman. Fee. D. 1973-314 | (B1427) Paul Rodriguez, et al. Fee. D. 1973-314 | (B1428) Warren J. Curry, et al. Fee. D. 1973-314 | (B1429) Paul E. Schuch, et al. Fee. D. 1973-314 | (B1430) Wilbert W. Butler, et al. Fee. D. 1973-314 | (B1431) Stanley J. Lorenz, et al. Fee. D. 1973-314 | (B1432) Errol M. Foreman, et al. Fee. D. 1973-314 | (B1433) Roy C. Hefner, et al. Fee. D. 1973-314 | (B1434) Albert W. Reed, et al. Fee. D. 1973-314 | (B1435) Harry Walter Walker, et al. Fee. D. 1973-314 | (B1436) Joe Vander Meulen, et al. Fee. D. 1973-314 | (B1437) David Niel Wood, et al. Fee. D. 1973-314 | (B1438) Frederick J. Baughman, et al. Fee. D. 1973-314 | (B1439) Robert L. Waller. Fee. D. 1973-314 | (B1440) Frank Baker, et al. Fee. D. 1973-314 | (B1441) Robert Kershaw, et al. Fee. D. 1973-314 | (B1442) John M. Cunko, et al. Fee. D. 1973-314 | (B1443) William H. Gramlich, et al. Fee. D. 1973-314 | (B1444) William McConel Althoff, et al. Fee. D. 1973-314 | (B1445) Ronald J. Hughes. Fee. D. 1973-314 | (B1446) Mason H. Johnson, et al. Fee. D. 1973-314 | (B1447) Robert Kershaw, et al. Fee. D. 1973-314 | (B1448) James L. Wofford, et al. Fee. D. 1973-314 | (B1449) Andree D. Vargas, et al. Fee. D. 1973-314 | (B1450) State to A.L. Freeman, et al. Fee. D. 1973-314 | (B1451) Luther D. Nix, et al. Fee. D. 1973-314 | (B1452) Jessie Phipps. Fee. D. 1973-314 | (B1453) Raymond E. Sauer, et al. Fee. D. 1973-314 | (B1454) J. Leo Rogie, et al. Fee. D. 1973-314 | (B1455) Fred Russel Mitchell, et al. Fee. D. 1973-314 | (B1456) A.L. Freeman, et al. Fee. D. 1973-314 | (B1457) Henry A. ... Fee. D. 1973-314 | (B1458) ... Fee. D. 1973-314 | (B1459) ... Fee. D. 1973-314 | (B1460) ... Fee. D. 1973-314 | (B1461) ... Fee. D. 1973-314 | (B1462) ... Fee. D. 1973-314 | (B1463) ... Fee. D. 1973-314 | (B1464) ... Fee. D. 1973-314 | (B1465) ... Fee. D. 1973-314 | (B1466) ... Fee. D. 1973-314 | (B1467) ... Fee. D. 1973-314 | (B1468) ... Fee. D. 1973-314 | (B1469) ... Fee. D. 1973-314 | (B1470) ... Fee. D. 1973-314 | (B1471) ... Fee. D. 1973-314 | (B1472) ... Fee. D. 1973-314 | (B1473) ... Fee. D. 1973-314 | (B1474) ... Fee. D. 1973-314 | (B1475) ... Fee. D. 1973-314 | (B1476) ... Fee. D. 1973-314 | (B1477) ... Fee. D. 1973-314 | (B1478) ... Fee. D. 1973-314 | (B1479) ... Fee. D. 1973-314 | (B1480) ... Fee. D. 1973-314 | (B1481) ... Fee. D. 1973-314 | (B1482) ... Fee. D. 1973-314 | (B1483) ... Fee. D. 1973-314 | (B1484) ... Fee. D. 1973-314 | (B1485) ... Fee. D. 1973-314 | (B1486) ... Fee. D. 1973-314 | (B1487) ... Fee. D. 1973-314 | (B1488) ... Fee. D. 1973-314 | (B1489) ... Fee. D. 1973-314 | (B1490) ... Fee. D. 1973-314 | (B1491) ... Fee. D. 1973-314 | (B1492) ... Fee. D. 1973-314 | (B1493) ... Fee. D. 1973-314 | (B1494) ... Fee. D. 1973-314 | (B1495) ... Fee. D. 1973-314 | (B1496) ... Fee. D. 1973-314 | (B1497) ... Fee. D. 1973-314 | (B1498) ... Fee. D. 1973-314 | (B1499) ... Fee. D. 1973-314 | (B1500) ... Fee. D. 1973-314 |
|--|---|---|--|---|--|---|--|---|---|---|---|---|---|---|--|---|--|---|---|--|---|--|--|---|---|---|---|---|--|---|--|--|---|--|---|--|--|--|--|--|--|---|--|--|--|--|---|---|---|---|--|--|---|---|---|---|---|---------------------------------------|------------------------------|------------------------------|------------------------------|------------------------------|------------------------------|------------------------------|------------------------------|------------------------------|------------------------------|------------------------------|------------------------------|------------------------------|------------------------------|------------------------------|------------------------------|------------------------------|------------------------------|------------------------------|------------------------------|------------------------------|------------------------------|------------------------------|------------------------------|------------------------------|------------------------------|------------------------------|------------------------------|------------------------------|------------------------------|------------------------------|------------------------------|------------------------------|------------------------------|------------------------------|------------------------------|------------------------------|------------------------------|------------------------------|------------------------------|------------------------------|------------------------------|------------------------------|------------------------------|

CITY

LIF. COOPERATIVE COLONY TRACT Portion of Block 20

MR 21-15/16

Lot 12

B1450

B1451

B1452

B1453

EQ B1454

B1455

LOT 11

B268

B1456

ST. 129.97'

4 3 2

58' 59.64'

19122

M.B. 588 - 7/178

432.57'

588 BT (NEW YORK AVE.)

N 0° 12' 54" W

588 BT

588 BT

588 BT

588 BT

588 BT

588 BT

588 BT

588 BT

588 BT

588 BT

588 BT

588 BT

588 BT

588 BT

588 BT

588 BT

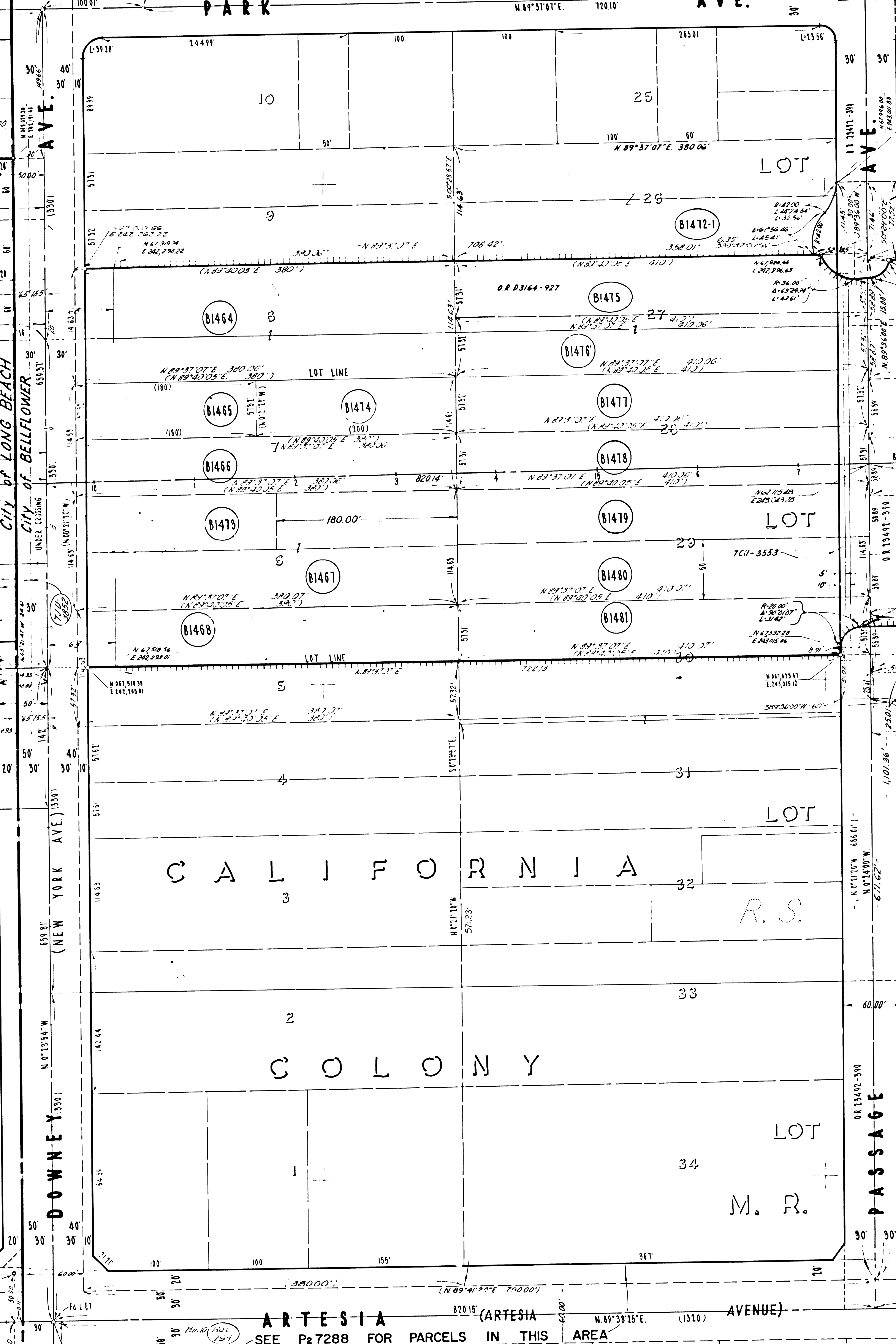
588 BT

588 BT

588 BT

588 BT

588 BT



FM 21531

- List of lot numbers and names: B1464, B1465, B1466, B1467, B1468, B1471, B1472, B1473, B1474, B1475, B1476, B1477, B1478, B1479, B1480, B1481, B1482, B1483, B1484, B1485, B1486, B1487, B1488, B1489, B1490.

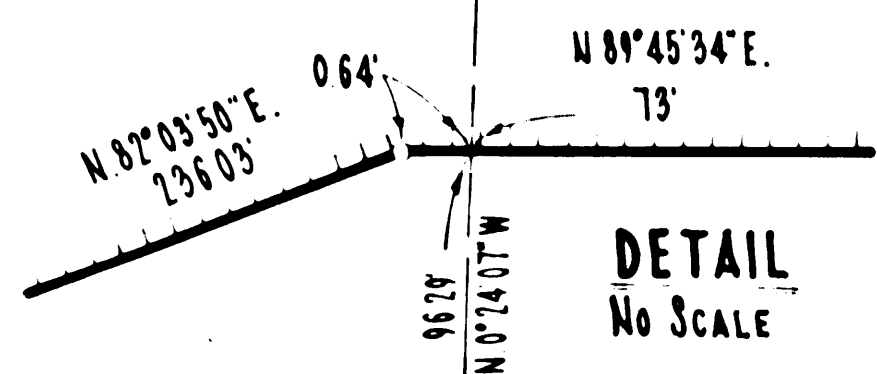
- List of lot numbers and names: B1491, B1492, B1493, B1494, B1495, B1496, B1497, B1498, B1499, B1500, B1501, B1502, B1503, B1504, B1505, B1506, B1507, B1508, B1509, B1510, B1511, B1512, B1513, B1514, B1515, B1516, B1517, B1518, B1519, B1520.

F.M. 21531

A6 OF A7

OF BELLFLOWER

LOT 21



PARK AVE. (1920) 1919 77'

AVE.

CALIFORNIA COLONY

LOT 20

SEE DETAIL ABOVE

M. R. - 21-15/16

R.S. 56-50

BLOCK 19

LOT 19

PALM ROAD

UNDEDICATED STREET

AVE.

OPERATIVE

TRACT

LOT 18

LOT 17

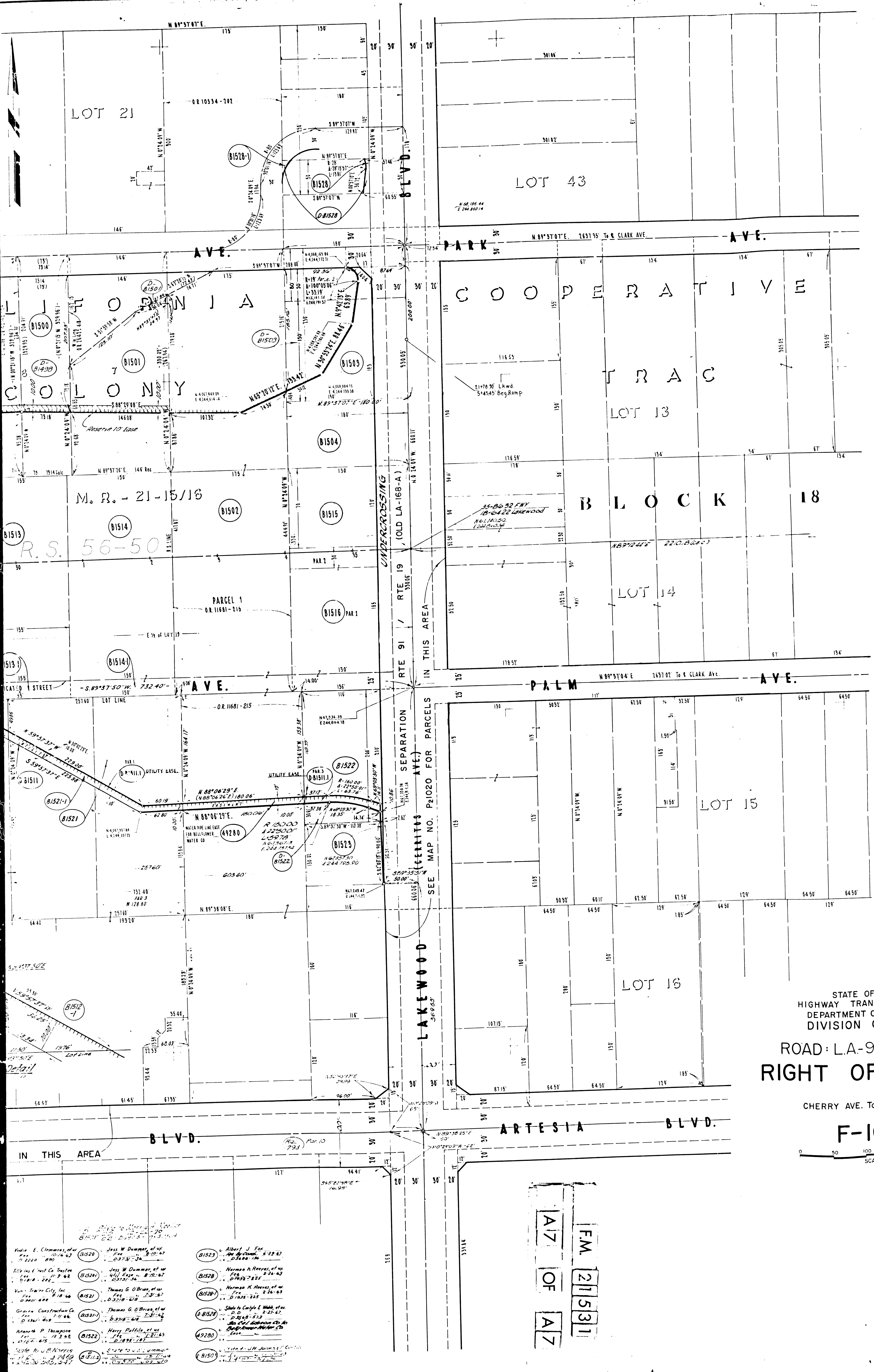
ARTESIA

SEE P27288 FOR PARCELS IN THIS AREA

BLVD.

COKE AVE. (1918) Ints. 31' (LINE) Etc.

- |  |   |   |   |   |  |  |   |   |
|--|---|---|---|---|--|--|---|---|
| <p>Harry E. Morgan, Jr. et al. Fee 9-24-44 D-2639-78</p> <p>Jeff L. Hawthorne, et al. Fee 12-27-44 D-2764-128</p> <p>City of Los Angeles Fee 11-29-44 D-2492-859</p> <p>Lester Dillinger, et al. Fee 12-22-44 D-2740-259</p> <p>Imogene Hunter, et al. Fee 12-12-44 D-2525-628</p> | <p>Frank F. Norris, et al. Fee 12-9-44 D-2776-744</p> <p>Harold Herman, et al. Fee 6-8-40 D-270-429</p> <p>Arthur S. Bayless, et al. Fee 1-30-44 D-2784-36</p> <p>M.A. Mueller Fee 12-14-44 D-2857-37</p> <p>So Calif Edison Co. Fee 12-3-44 D-2825-815</p> | <p>Sally R. Storer, et al. Fee 2-5-44 D-2837-279</p> <p>Joseph A. Honey, et al. Fee 10-16-43 D-2770-210</p> <p>Lester Dillinger, et al. Fee 7-21-44 D-2837-249</p> <p>Lester Dillinger, et al. Fee 4-12-44 D-2822-68</p> <p>W.E. Price Fee 10-24-44 D-2804-729</p> <p>ST to Mobil Oil Corp Fee 10-21-44 D-2670-27</p> | <p>W.E. Price Fee 2-5-44 D-2837-279</p> <p>Arthur A. Hamilton, et al. Fee 2-5-44 D-2837-279</p> <p>The Analsky Co. Fee 2-5-44 D-2837-279</p> <p>The Analsky Co. Fee 2-5-44 D-2837-279</p> <p>Eugene K. Scheffer, et al. Fee 11-10-44 D-2842-478</p> <p>ST to Three O. Real Co. Fee 10-21-44 D-2670-27</p> | <p>Eugene K. Scheffer, et al. Fee 11-10-44 D-2842-478</p> <p>Ethel M. Schultz Fee 12-2-44 D-2828-748</p> <p>Eugene K. Scheffer, et al. Fee 12-16-44 D-2837-249</p> <p>Eugene K. Scheffer, et al. Fee 11-10-44 D-2842-478</p> <p>Zeno W. Stephens, et al. Fee 11-10-44 D-2842-478</p> <p>STATE TO CALIF GAS CO. Fee 6-17-49 D-2444-933</p> | <p>Zeno W. Stephens, et al. Fee 11-10-44 D-2842-478</p> <p>Leo Calvacco, et al. Fee 3-15-43 D-2809-320</p> <p>Leo Calvacco, et al. Fee 3-15-43 D-2809-320</p> <p>Richard L. Williams Fee 2-2-43 D-2807-545</p> <p>Richard L. Williams Fee 2-2-43 D-2807-545</p> <p>Kenneth P. Thompson Fee 12-2-44 D-2828-748</p> <p>State to J.B. Norris Fee 3-28-49 D-2422-245</p> | <p>Yedia E. Clemmons, et al. Fee 10-16-43 D-2770-210</p> <p>Title Ins. Trust Co. Trustee Fee 11-8-43 D-2818-322</p> <p>Von's Trailer City, Inc. Fee 11-8-43 D-2818-322</p> <p>Green Construction Co. Fee 11-8-43 D-2818-322</p> <p>Kenneth P. Thompson Fee 12-2-44 D-2828-748</p> <p>State to J.B. Norris Fee 3-28-49 D-2422-245</p> | <p>Jess W. Dunham, et al. Fee 2-7-43 D-2732-215</p> <p>Jess W. Dunham, et al. Fee 2-7-43 D-2732-215</p> <p>Thomas G. O'Brien, et al. Fee 2-7-43 D-2732-215</p> <p>Thomas G. O'Brien, et al. Fee 2-7-43 D-2732-215</p> <p>Harry Puffile, et al. Fee 12-12-44 D-2825-815</p> <p>State to J.B. Norris Fee 3-28-49 D-2422-245</p> | <p>Albert J. Fox Fee 2-26-43 D-2732-215</p> <p>Norman K. Reeves, et al. Fee 2-26-43 D-2732-215</p> <p>Norman K. Reeves, et al. Fee 2-26-43 D-2732-215</p> <p>Shirley Carole E. Hunt, et al. Fee 2-26-43 D-2732-215</p> <p>State to J.B. Norris Fee 3-28-49 D-2422-245</p> |
|--|---|---|---|---|--|--|---|---|



FOR CONTINUATION SEE MAP NO. F-1094

STATE OF CALIFORNIA  
HIGHWAY TRANSPORTATION AGENCY  
DEPARTMENT OF PUBLIC WORKS  
DIVISION OF HIGHWAYS  
ROAD: L.A.-91- 131/ 14.6  
RIGHT OF WAY MAP

CHERRY AVE. TO LAKEWOOD BLVD.  
**F-1093**  
SCALE: 1" = 50'

FM 21531  
OF  
A7

- |  |  |  |
|--|--|--|
| Yolie E. Clemens, et al<br>12/20/43<br>B1520   | Jess W. Dummer, et al<br>1/15/47<br>B1521    | Albert J. Fox<br>4/29/47<br>B1523                  |
| William & Carl Co. Trustee<br>11/2/43<br>B1524 | Jess W. Dummer, et al<br>4/1/47<br>B1522     | Norman A. Reeper, et al<br>7/24/47<br>B1528        |
| Van - Trailer City, Inc<br>8/18/46<br>B1521    | Thomas G. O'Brien, et al<br>7/23/47<br>B1521 | Norman A. Reeper, et al<br>8/26/47<br>B1529        |
| Green Construction Co<br>7/1/46<br>B1521       | Thomas G. O'Brien, et al<br>8/31/47<br>B1521 | State of Calif. E. Webb, et al<br>8/27/47<br>B1528 |
| Kenneth P. Thompson<br>12/1/45<br>B1522        | Harry Paffels, et al<br>1/16/48<br>B1521     | San Cal. Edison Co. et al<br>1/16/48<br>B1528      |
| State to J.R. Morris<br>1/16/49<br>B1512       | State to J.R. Morris<br>1/16/49<br>B1512     | State to J.R. Morris<br>1/16/49<br>B1512           |