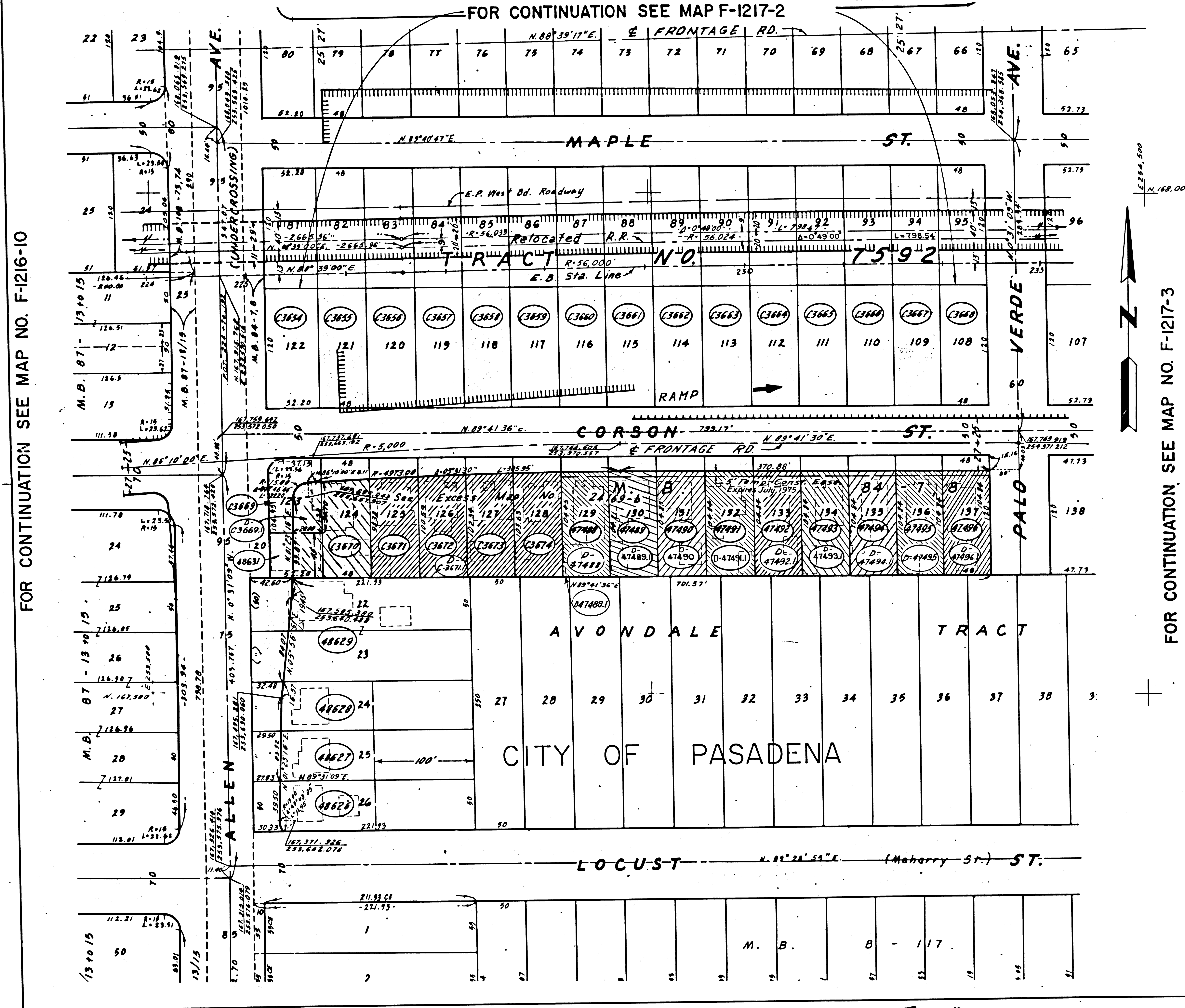


INTERSTATE
 STATE OF CALIFORNIA
 BUSINESS & TRANSPORTATION AGENCY
 DEPARTMENT OF TRANSPORTATION
 07-LA-210-27.1/27.9
R/W INDEX MAP
 600 0 600 SHEET OF
 F- NO. 1217 DATE 6-26-70

9-2573

F.M. 21543-1

Fm 21543-1



PARCEL NO.	GRANTOR OR GRANTEE	AREA*		RECORDING DATA
		TO BE ACQUIRED	EXCESS TOTAL	
C3654	Embree	6,264	6,264	Fee 6-2-66 D2324-311
C3655	Downie	5,760	5,760	Fee 8-31-64 D2609-681
C3656	Patterson	5,760	5,760	Fee 5-11-64 D2466-110
C3657	West	5,760	5,760	Fee 4-20-64 D2439-831
C3658	Meyer	5,760	5,760	Fee 4-20-64 D2439-601
C3659	Morgan	5,760	5,760	Fee 8-31-64 D2609-681
C3660	Weigand	5,760	5,760	Fee 4-20-64 D2439-621
C3661	Pettinger	5,760	5,760	Fee 5-12-64 D2467-761
C3662	Wight	5,760	5,760	Fee 4-24-64 D2446-202
C3663	Sanders	5,760	5,760	Fee 6-1-64 D2457-238
C3664	Benhart	5,760	5,760	Fee 5-4-64 D2457-743
C3665	Sieben	5,760	5,760	Fee 5-22-64 D2481-450
C3666	Hoehle, exec.	5,760	5,760	Fee 8-25-64 D2602-284
C3667	Dawkins	5,760	5,760	Fee 5-5-64 D2459-415
C3668	Robertson	5,760	5,760	Fee 4-17-64 D2437-844
C3669	Dorris	3,867	1,320	3,867 Fee 4-8-71 D5020-320
C3670	Goussian	5,760	4,660	5,760 Fee 6-9-65 D2933-266
C3671	Schoefer	5,760	4,777	5,760 Fee 3-15-65 D2831-291
C3672	Martin	5,760	4,872	5,760 Fee 3-17-65 D2831-645
C3673	Nelson	5,760	4,945	5,760 Fee 4-8-65 D2861-451
C3674	Hoefler	5,760	4,996	5,760 Fee 4-14-65 D2867-188
D-47471	State to J.C. Coelho			D.D. 4-9-72 D5454-207
D-47490	State to D.D. Pederson			D.D. 3-22-72 D5399-623
D-47491	Valenti & Coelho			D.D. 10-15-73 D6050-737
D-47488	Funai			Q.C. 10-23-73 D6058-416
D-47488.1	Corrected Deed			D.D. 10-23-73 D6058-419
47488	Nicholson	5,760	5,024	5,760 Fee 4-22-68 D3977-217
D-47488	State to C. Funai			D.D. 12-16-71 D5929-322
47489	Ruscillo	5,760	5,032	5,760 Fee 4-22-68 D3977-204
D-47489.1	State House Sales Inc.			D.D. 6-4-73 D5894-709
47490	Rasmussen	5,760	5,032	5,760 Fee 4-22-68 D3977-210
47491	La Rue	5,760	5,032	5,760 Fee 4-22-68 D3977-218
D-47491.1	State to State House Sales			D.D. 4-20-72 D5432-954
47492	Fevergeon	5,760	5,032	5,760 Fee 5-6-68 D3992-500
D-47492.1	State to State House Sales			D.D. 4-14-72 D5426-749
47493	Regan	5,760	5,032	5,760 Fee 4-5-68 D4020-456
D-47493.1	State to A.H. Alattar			D.D. 3-31-72 D5411-300
47494	Graham	5,760	5,032	5,760 Fee 5-7-68 D3993-941
D-47494.1	St to Sabah Michael			D.D. 4-28-72 D5443-405
47495	Zwiur	5,760	5,032	5,760 Fee 4-7-68 D4024-783
D-47495.1	State to W.D. Waddell			D.D. 1-12-72 D5316-853
47496	Hippe	5,760	5,032	5,760 Fee 5-2-68 D3989-911
D-47496.1	State to W.D. Little			D.D. 6-15-72 D5494-610
48626	McCarron	1,364	6,097	Fee 6-11-70 D4737-385
48627	Pelkus	1,433	6,097	Fee 10-20-69 D4829-943
48628	Tanner	1,527	6,097	Fee 1-2-70 D4591-164
48629	Valenti	3,933	22,193	Fee 4-3-70 D4790-693
48631	Daggett	2,349	1,297	2,349 Fee 9-8-69 D4489-764

* Excess Includes Ease Area

ISSUE DATE
 H.A.B. 3-18-69
 J.V. 4-27-71

STATE OF CALIFORNIA
 BUSINESS & TRANSPORTATION AGENCY
 DEPARTMENT OF TRANSPORTATION
 INTERSTATE
R/W MAP
 NO. F-1217-1
 07-LA-210-272
 50' FILE NO. 12777-C(II)10
 DATE 3-17-69
 R/W P.E. TOMITA SR. BERG

LEGEND: ACCESS DENIED EXCLUDES STREET AREA
 AREA IN SQUARE FEET UNLESS OTHERWISE NOTED
 PREVIOUS RECORD DATA

F.M. 21543-2

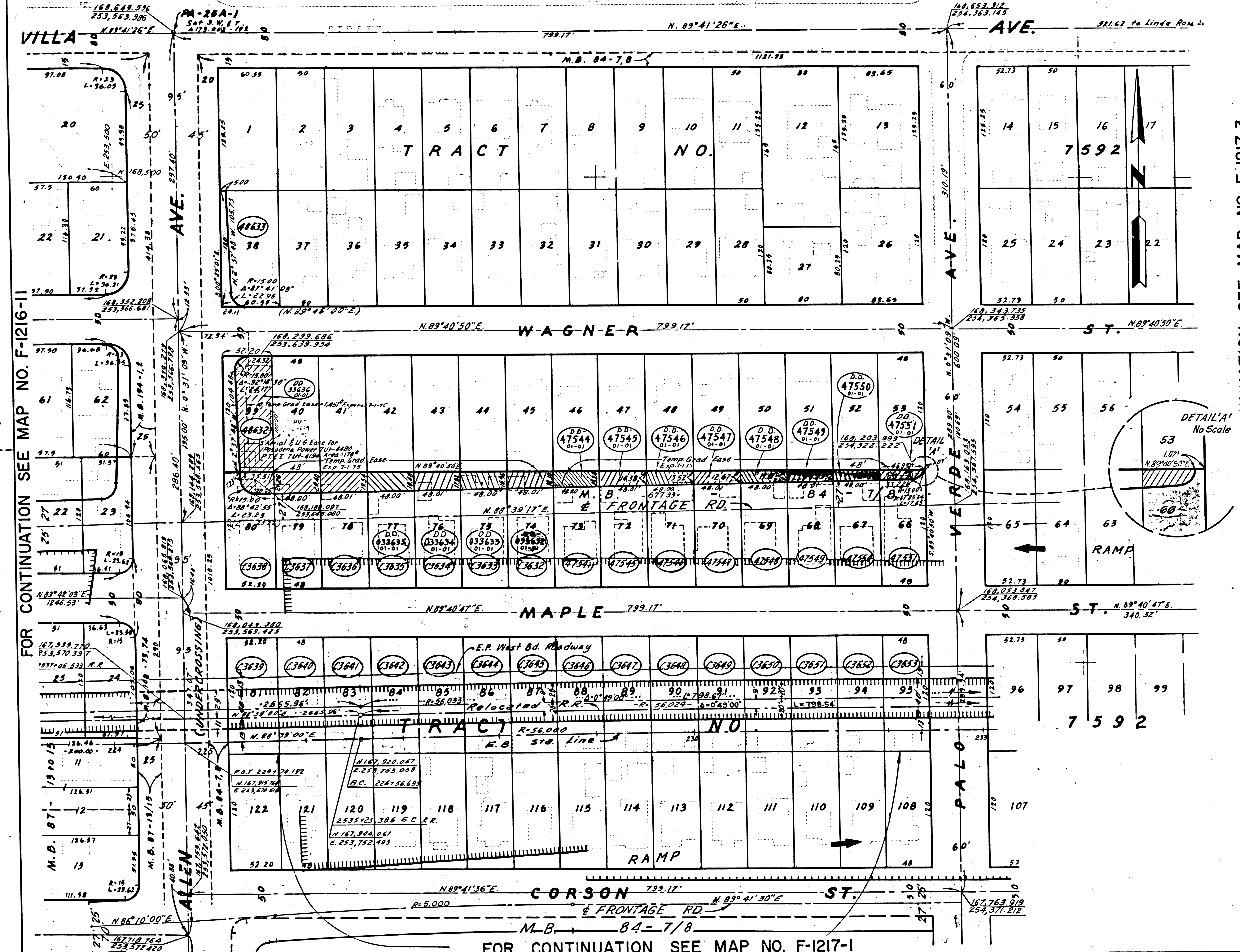
FOR CONTINUATION SEE MAP NO. F-1216-10

FOR CONTINUATION SEE MAP NO. F-1217-3

9-25-73

CITY OF PASADENA

STATE	FEDERAL PROJECT NO.	DATE	SHEET NO.	TOTAL SHEETS
CALIF	I-210-1(51)25	10-30-65	13a	
DISTRICT R/W AGENT		FED. HWY. ADM.	DATE	



PARCEL NO	GRANTOR OR GRANTEE	ACQ	EXCESS	TOTAL	NSI	RECORDING DATE	OR
C3632	Proffitt	5,760	793	5,760	Fee	12-10-68	D4219-426
C3633	Lee	5,760	835	5,760	Fee	7-30-65	D2996-335
C3634	Mc Devitt	5,760	876	5,760	Fee	3-26-65	D2846-213
C3635	Bingham	5,760	917	5,760	Fee	4-1-65	D2853-206
C3636	Balley	5,760	958	5,760	Fee	3-26-65	D2846-215
C3637	Pippitt	5,760	1,000	5,760	Fee	4-2-65	D2854-941
C3638	Lewitt	6,264	712	6,264	Fee	12-26-65	D2987-744
C3639	Hines	6,264	Cono	6,264	Cono	8-24-65	D3026-333
C3640	Yeske	5,760		5,760	Fee	7-6-64	D2537-590
C3641	Guilford	5,760		5,760	Fee	6-3-64	D2494-314
C3642	Castleman	5,760		5,760	Fee	6-9-64	D2502-114
C3643	Szabo	5,760		5,760	Fee	6-5-64	D2498-667
C3644	Holtz	5,760		5,760	Fee	6-4-64	D2496-597
C3645	Reed	5,760		5,760	Fee	7-6-64	D2537-594
C3646	Locklin	5,760		5,760	Fee	6-4-64	D2496-612
C3647	Ray	5,760		5,760	Fee	6-8-64	D2500-617
C3648	Mount	5,760		5,760	Fee	7-7-64	D2539-81
C3649	Peschke	5,760		5,760	Fee	6-4-64	D2496-614
C3650	Freeman	5,760		5,760	Fee	5-29-64	D2490-123
C3651	Tubbesing	5,760		5,760	Fee	7-27-64	D2564-54
C3652	Drummond	5,760		5,760	Fee	5-29-64	D2490-134
C3653	Koslan	5,760		5,760	Fee	8-10-64	D2583-260
A7544	Stevenson	5,760	752	5,760	Fee	5-16-64	D4371-619
A7545	Lambert	5,760	711	5,760	Fee	12-8-64	D4227-347
A7546	Johnsen	5,760	670	5,760	Fee	12-8-64	D4227-354
A7547	Stevenson	5,760	629	5,760	Fee	6-10-64	D4396-330
A7548	Campbell	5,760	587	5,760	Fee	6-26-64	D4415-369
A7549	Pappas	5,760	546	5,760	Fee	11-28-64	D4198-656
A7550	Polige	5,760	505	5,760	Fee	11-28-64	D4208-971
A7551	Vail	5,760	419	5,760	Fee	11-28-64	D4208-984
A8632	Litreal	6,264	4,475	6,264	Fee	6-30-64	D4419-309
A8633	Morgan	927		7,266	Fee	2-6-72	D5354-755
D.D. 47540	Rounds				D.D.	7-13-73	D5946-164
D.D. 47541	McCaskey				D.D.	7-13-73	D5946-167
D.D. 47542	Vitale				D.D.	7-13-73	D5946-92
D.D. 47543	BURK				D.D.	1-10-75	D6425-700
D.D. 47544	Jones				D.D.	7-13-73	D5946-150
D.D. 47545	Simanson				D.D.	7-13-73	D5946-105
D.D. 47546	Barm				D.D.	7-13-73	D5946-158
D.D. 47547	Weikamp				D.D.	7-13-73	D5946-161
D.D. 47548	Ocampo				D.D.	8-22-73	D5992-245
D.D. 47549	Anderson				D.D.	9-14-73	D61019-258
D.D. 47550	Woodall				D.D.	12-5-73	D6102-70
D.D. 47551	Lefebvre				D.D.	1-11-74	D6136-921
D.D. 47552	Lewis				D.D.	2-15-74	D6171-733

FOR CONTINUATION SEE MAP NO. F-1217-3

FOR CONTINUATION SEE MAP NO. F-1216-11

▲ Excess Area Includes Ease Area.

INTERSTATE

STATE OF CALIFORNIA
BUSINESS & TRANSPORTATION AGENCY
DEPARTMENT OF TRANSPORTATION

R/W MAP

NO. F-1217-2
07-LA-210-272

50 0 50 FILE NO 21478-C01100
DATE 2-4-69
R.W.P.E. TOMITA SR BERG

LEGEND: ACCESS DENIED EXCLUDES STREET AREA
* AREA IN SQUARE FEET UNLESS OTHERWISE NOTED
() PREVIOUS RECORD DATA

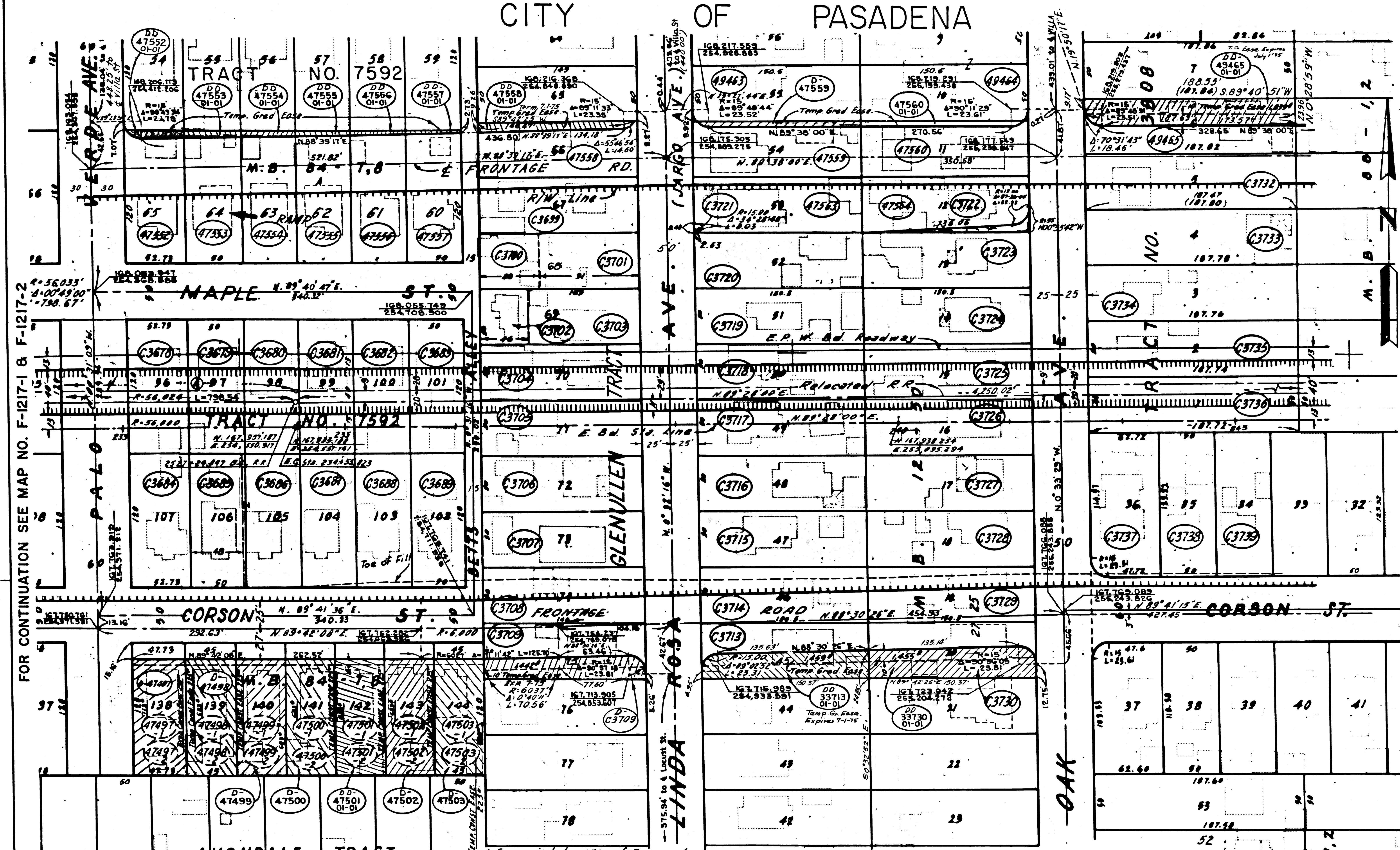
F.M. 21543-3

FM 21543-3

9-25-73

CITY OF PASADENA

STATE FEDERAL PROJECT NO. 1030 63/14
 DISTRICT R/W AGENT FED. HWY. ADM. DATE



PARCEL NO.	GRANTOR OR GRANTEE	AREA * ACQ EXCESS TOTAL	INST	RECORDING DATA DATE OR
C3678	SILIAN	6,327	6,327	Fee 6-22-64 D2518-205
C3679	STEVENSON	6,000	6,000	Fee 7-2-64 D2533-801
C3680	PEARLE	6,000	6,000	Fee 7-7-64 D2539-49
C3681	BENNER	6,000	6,000	Fee 7-16-64 D2511-214
C3682	LINGENFELTER	6,000	6,000	Fee 7-3-64 D2535-739
C3683	SCHILLY	6,000	6,000	Fee 6-22-64 D2518-208
C3684	KARR	6,327	6,327	Fee 6-16-64 D2511-216
C3685	BALOGA	5,760	5,760	Fee 7-13-64 D2546-522
C3686	KAUFENBERG	6,240	6,240	Fee 7-8-64 D2540-553
C3687	PAYNE	6,000	6,000	Fee 6-19-64 D2516-341
C3688	GRASS	6,000	6,000	Fee 7-6-64 D2537-532
C3689	FISHER	6,000	6,000	Fee 6-16-64 D2511-231
C3700	McVEY	2,900	2,900	Fee 5-12-65 D2901-274
C3701	ORELLANA	4,550	4,550	Fee 4-20-65 D2874-293
C3702	CARLSON	2,300	2,300	Fee 7-2-64 D2533-775
C3703	SERHANT	5,150	5,150	Fee 6-16-64 D2511-239
C3704	SYMPSON	7,450	7,450	Fee 8-5-64 D2578-150
C3705	MOSIER	7,450	7,450	Fee 6-22-64 D2518-201
C3706	BARSI	7,450	7,450	Fee 7-16-64 D2511-235
C3707	MILNE	7,450	7,450	Fee 8-18-64 D2593-746
C3708	BIRGE	7,450	7,450	Fee 7-27-65 D2991-224
C3709	VISCARRA	7,450	7,450	Fee 5-20-65 D2911-189
C3713	MATHEWS	7,525	7,525	Fee 5-10-65 D2898-185
C3714	WALLER	7,525	7,525	Fee 8-16-65 D3014-370
C3715	ANDREWS	7,525	7,525	Fee 3-18-65 D2836-394
C3716	FRISCHKORN	7,525	7,525	Fee 8-12-64 D2586-609
C3717	WARNER	7,525	7,525	Fee 10-26-64 D2649-963
C3718	COLTER	7,525	7,525	Fee 8-25-64 D2602-297
C3719	SPENDRUP	7,525	7,525	Fee 8-12-64 D2586-588
C3720	HOWARD	7,525	7,525	Fee 4-16-65 D2871-429
C3721	RUDD	8	7,525	Fee 11-23-65 D3123-588
C3722	PAS FEEDS & VET	583	7,525	Fee 10-18-65 D2457-304
C3723	KIS	7,525	7,525	Fee 5-3-66 D3291-395
C3724	HEFFERLIN	7,525	7,525	Fee 8-12-64 D2586-607
C3725	GRIEVE	7,525	7,525	Fee 10-8-64 D2656-624
C3726	DEAL	7,525	7,525	Fee 7-24-64 D2562-181
C3727	ALLEN	7,525	7,525	Fee 7-31-64 D2571-233
C3728	TOKUDO	7,525	7,525	Fee 8-21-64 D2599-74
C3729	RASMUSSEN	7,525	7,525	Fee 4-20-65 D2874-301
C3730	MAHAFFEY	7,525	7,525	Fee 6-1-65 D2923-362
C3733	CRUSBERG	9,400	9,400	Fee 4-16-65 D2871-451
C3734	MUELLER	9,389	9,389	Fee 4-28-65 D2884-393
C3735	LYON	9,388	9,388	Fee 8-3-64 D2573-126
C3736	BARSAMIAN	9,387	9,387	Fee 8-14-64 D2589-995
C3737	MORGAN	8,102	8,102	Fee 8-31-64 D2609-677
C3738	WOODRUM	6,496	6,496	Fee 8-12-64 D2586-584
C3739	Emery	6,496	6,496	Fee 7-27-64 D2564-58
C3699	Stone	7,450	7,450	Fee 3-18-69 D4310-311
C3732	EST of PARISH	9,390	9,390	Fee 5-12-69 D4365-884
DD 47550	THOMAS			DD 7-24-78 D6566-747
DD 47556-01-01	LOVATO			DD 4-9-78 D6613-305

FOR CONTINUATION SEE MAP NO. F-1217-4 & F-1217-5

FOR CONTINUATION SEE MAP NO. F-1217-1 & F-1217-2

PARCEL NO.	GRANTOR OR GRANTEE	TO BE ACQUIRED	EXCESS	AREA * TOTAL	INST	RECORDING DATA DATE OR
▲ 47497	Barnard	5,728	5,015	5,728	Fee	6-24-68 D4042-339
▲ 47498	Vandervort	5,400	4,717	5,400	Fee	7-22-68 D4073-874
▲ 47499	Lee	5,400	4,717	5,400	Fee	6-27-68 D4046-812
▲ 47500	Hewitt	5,400	4,717	5,400	Fee	7-15-68 D4066-940
▲ 47501	George	5,400	4,716	5,400	Fee	5-14-68 D4008-467
▲ 47502	Jensen	5,400	4,717	5,400	Fee	5-5-68 D4020-870
▲ 47503	Burlier	5,400	4,720	5,400	Fee	3-7-68 D4004-767
D-47498	St to J. E. Hailey				DD	7-27-73 D5512-235
D-47497	State to John Velda				DD	9-25-72 D5613-65
D-47502	State to Adil M. Attar				DD	10-16-72 D5635-202
D-47503	State to S. Y. Michael				DD	11-17-72 D5670-142
D-47499	Akiyoshi, Trustee				DD	6-4-73 D5894-647
D-47500	St to State House Sales				DD	6-4-73 D5894-714
DD 47501	St to B. E. Bullhus				DD	5-9-73 D5864-848
▲ 47552	Smith	6,328	359	6,328	Fee	1-23-70 D4614-535
▲ 47553	Ilten	6,000	338	6,000	Fee	8-3-69 D4388-890
▲ 47554	Anderson	6,000	293	6,000	Fee	6-18-69 D4399-325
▲ 47555	Westrop	6,000	248	6,000	Fee	5-8-69 D4363-673
▲ 47556	Menard	6,000	203	6,000	Fee	5-16-69 D4371-217
▲ 47557	Feyen	6,000	159	6,000	Fee	5-9-69 D4373-278

PARCEL NO.	GRANTOR OR GRANTEE	TO BE ACQUIRED	EXCESS	AREA * TOTAL	INST	RECORDING DATA DATE OR
▲ 47558	Wolfe Devel. Co.	7,450	1,135	7,450	Fee	11-25-68 D4204-721
▲ 47559	Anaya	7,525	852	7,525	Fee	11-2-68 D4190-895
▲ 47560	Chernois	7,525	824	7,525	Fee	1-21-69 D4256-927
▲ 47563	Rudd	7,517		7,517	Fee	9-19-69 D4301-479
▲ 47564	White	6,942		6,942	Fee	3-24-70 D4665-294
D-47559	State to H. Snudden				DD	2-21-73 D5768-333
D-47560	State to Van Luyk				DD	6-11-73 D5903-220
DD 47561	Badger				DD	5-6-74 D6261-613
D-47562	Venez				DD	6-14-74 D6310-304
DD 47563	Simpson				DD	6-27-74 D6325-501
DD 47564	Thirloway				DD	9-20-74 D6421-74
DD 47565	Dilbeck				DD	9-20-74 D6421-77
▲ 49461	Finnaway				Fee	
▲ 49462	Luyk				Fee	
▲ 49463	Snudden				Fee	8-14-72 D5565-539
▲ 49464	Noare, R. L.				Fee	2-5-73 D5731-735
▲ 49465	Schrock				Fee	5-13-69 D4367-309
DD 47564	Johnson				DD	9-20-74 D6421-79
DD 47565	Hayes				DD	9-20-74 D6421-81
DD 47566	THOMAS				DD	2-24-75 D6566-250

INTERSTATE

STATE OF CALIFORNIA
 BUSINESS & TRANSPORTATION AGENCY
 DEPARTMENT OF TRANSPORTATION

R/W MAP
 NO. F-1217-3
 07-LA-210-274

50 0 50 FILE NO. 12825-C(11-1)
 DATE 7-18-66
 R/W P.E. IOMITA SR. BERG

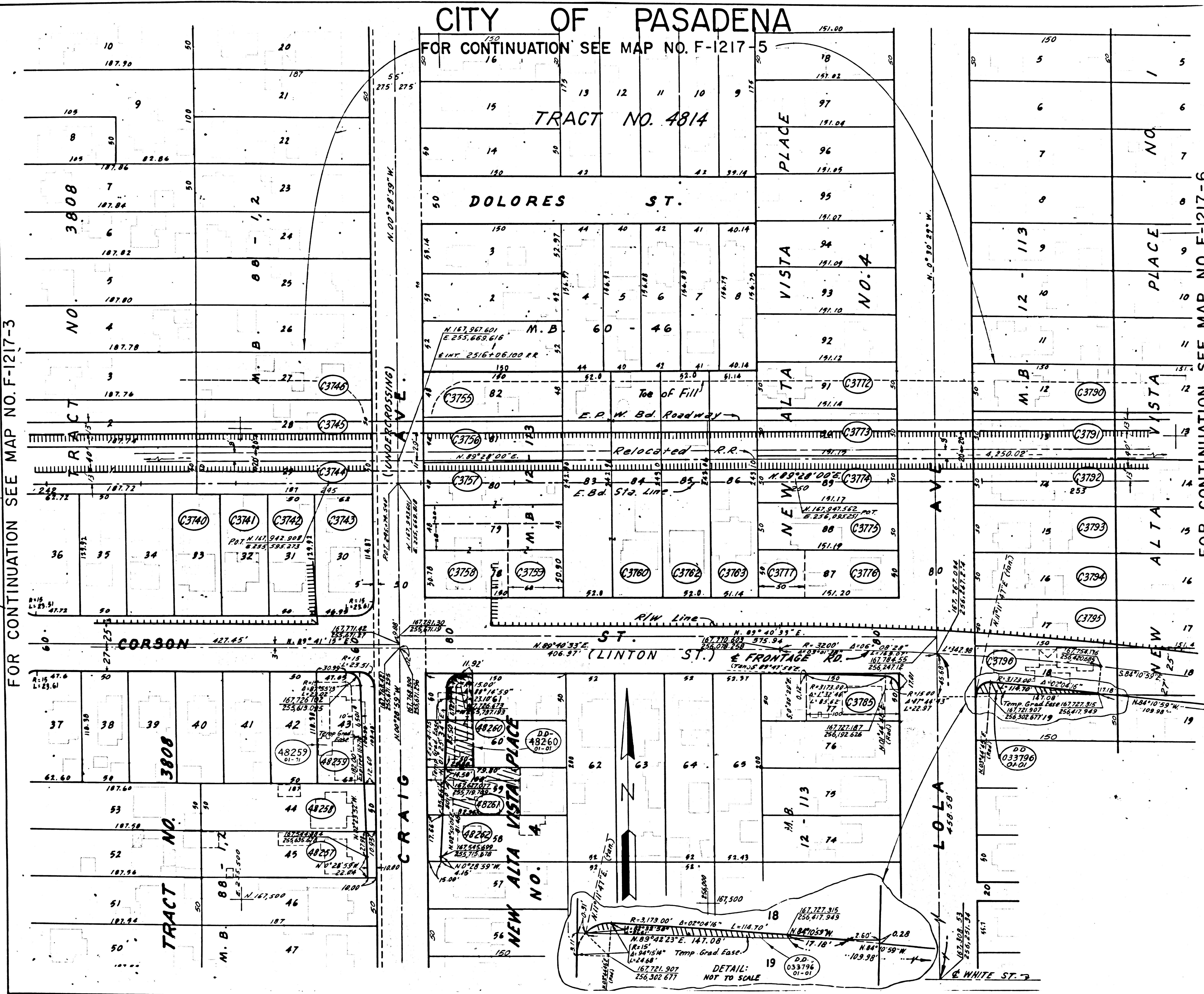
LEGEND:
 ACCESS DENIED * AREA IN SQUARE FEET UNLESS OTHERWISE NOTED
 () PREVIOUS RECORD DATA

F.M. 21543-4

FM 21543-4

CITY OF PASADENA

FOR CONTINUATION SEE MAP NO. F-1217-5



FOR CONTINUATION SEE MAP NO. F-1217-3

FOR CONTINUATION SEE MAP NO. F-1217-6

STATE	FEDERAL PROJECT NO.	EFFECTIVE DATE	SHEET NO.	TOTAL SHEETS
CALIF.	7-210-1 (51) 25	10-30-63	15	

DISTRICT R/W AGENT FED. HWY. ADM. DATE

PARCEL NO.	GRANTOR OR GRANTEE	ACQ.	AREA * EXCESS	TOTAL	NS.	RECORDING DATA DATE OR
C3740	DUSENBERRY	6,496		6,496	Fee	7-13-64 02548-534
C3741	FILGER	6,496		6,496	Fee	9-17-64 02630-172
C3742	WHITAKER	6,496		6,496	Fee	8-12-64 02586-592
C3743	SMITH	8,006		8,006	Fee	5-12-65 02901-299
C3744	FROKIER	9,350		9,350	Fee	7-27-65 02991-212
C3745	Mc GEE	9,350		9,350	Fee	3-18-65 02836-431
C3746	SCHWEITZER	9,350		9,350	Fee	5-5-65 02893-257
C3755	CANN	7,200		7,200	Fee	7-28-64 03159-148
C3756	GALLAHER	7,200		7,200	Fee	7-48-64 02548-172
C3757	WELLOR	10,200		10,200	Fee	7-17-64 02593-708
C3758	ENGLISH	7,095		7,095	Fee	9-18-64 02628-394
C3759	VILLALOBOS	4,733		4,733	Fee	8-21-64 02599-60
C3760	LITTLEJOHN	25,268		25,268	Fee	7-21-64 02596-950
C3762	BUTTON	12,638		12,638	Fee	2-21-66 03213-503
C3763	SCHUMM	12,432		12,432	Fee	8-12-64 02586-592
C3772	IMHOFF	7,554		7,554	Fee	4-19-65 02872-881
C3773	CARTWRIGHT	7,558		7,558	Fee	7-31-64 02971-274
C3774	DENA	7,558		7,558	Fee	7-17-64 02553-730
C3775	MORTIMER	7,559		7,559	Fee	7-24-64 02562-148
C3776	LEVETT	5,060		5,060	Fee	7-17-64 02553-712
C3777	BUTTON	2,500		2,500	Fee	1-19-66 03180-563
C3785	TOLLE	153		5,000	Fee	4-28-70 04697-549
C3790	SCHOLZ	7,500		7,500	Fee	7-27-64 02564-41
C3791	JEFFRIES	7,500		7,500	Fee	7-14-64 02548-174
C3792	GAREN	7,500		7,500	Fee	7-24-64 02562-187
C3793	WILCOX	7,500		7,500	Fee	7-27-64 02564-36
C3794	DAVIDSON	7,500		7,500	Fee	7-22-64 02558-687
C3795	ANDERSON	7,500		7,500	Fee	7-30-65 02996-362
C3796	MIRS ST.	7,500	989	7,500	Fee	8-5-65 03004-723
48257	BUTTON	513		9,350	Fee	4-28-70 04697-567
48258	ROMERO	508		9,350	Fee	3-24-70 04665-307
48259	WAGNER	7,292	5,570	7,292	Fee	3-16-70 04657-878
48260	HUDSON	5,000	2,768	5,000	Fee	9-2-69 04483-424
48261	STEWART	5,000	4,047	5,000	Fee	8-20-63 04472-61
48262	TOLBERT	811		7,500	Cond	11-19-71 05263-965
DD-033796	PICKETT				D.D.	3-14-74 06199-777
DD-48760	BILLOTTI				DD	4-18-74 06239-372

* Excess includes Easement Area

INTERSTATE
STATE OF CALIFORNIA
BUSINESS & TRANSPORTATION AGENCY
DEPARTMENT OF TRANSPORTATION

ISSUE DATE
J.N.S. 7-25-68
H.A.B. 1-27-69
H.A.B. 3-12-69
C.D.S. 9-27-71

R/W MAP
NO. F-1217-4
07-LA-210-27.5

FILE NO. 12861-C(II)-12
DATE 7-26-66
RWPE TOMITA SR. BERG

LEGEND: ACCESS DENIED * EXCLUDES STREET AREA
AREA IN SQUARE FEET UNLESS OTHERWISE NOTED
() PREVIOUS RECORD DATA

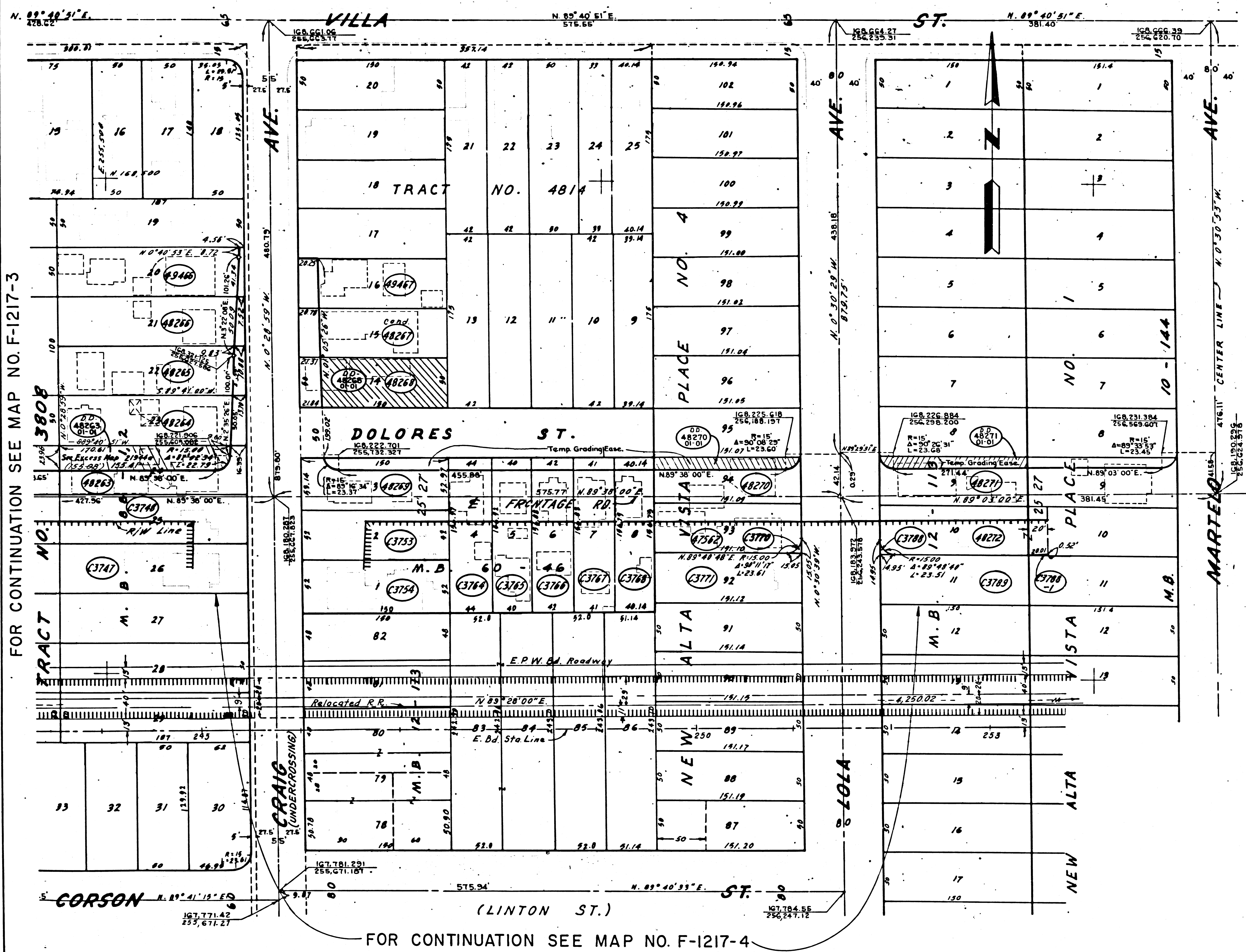
FM 21543-5

FM 21543-5

9-25-73

CITY OF PASADENA

STATE OF CALIF. FEDERAL PROJECT NO. I-210-1(51)25 EFFECTIVE DATE 10-30-63 SHEET NO. 15a TOTAL SHEETS 15a



PARCEL NO	GRANTOR OR GRANTEE	ACQ	EXCESS	AREA TOTAL	INST. DATE	RECORDING OR
C3747	KALOUSDIAN	9,350		9,350	Fee 8-2-65	D2998-739
C3748	HOWD	9,350		9,350	Fee 11-25-68	D4204-056
C3753	BUSHNELL, JR	7,800		7,800	Fee 4-1-66	D1257-487
C3754	TROWBRIDGE	7,800		7,800	Fee 3-7-66	D3228-135
C3764	TURKINGTON	6,905		6,905	Fee 12-4-65	D3145-288
C3765	KARLYN	6,275		6,275	Fee 12-7-65	D3137-501
C3766	HILDRETH	6,388		6,388	Fee 12-22-65	D3153-657
C3767	KUPER	6,429		6,429	Fee 12-3-65	D3134-338
C3768	FIFE	6,294		6,294	Fee 12-13-65	D3143-846
C3770	DORN	49		7,554	Fee 3-3-66	D3224-893
C3771	ZITZMAN	7,556		7,556	Fee 4-28-65	D2884-395
C3788	FEHER	47		8,500	Fee 1-21-66	D3183-130
C3788-1	FEHER	5		8,500	Fee 1-21-66	D3183-130
C3789	MONTANEZ	7,500		7,500	Fee 12-22-65	D3153-652
47562	DORN	7,505		7,505	Fee 12-5-68	D4214-979
48263	CHRISTIANO	9,350	4,018	9,350	Fee 11-6-68	D4185-515
48264	HAMILTON				D.D. 10-16-78	D6052-386
48265	HAMILTON	752		9,350	Fee 9-3-69	D4485-677
48265	RANDOLPH	617		9,350	Fee 7-29-69	D4448-859
48266	SHEAFOR	460		9,350	Fee 7-9-69	D4428-722
48267	BIDINIAN	1,052		7,500	Cond 11-26-71	D5269-631
48268	HANSEN	7,300	6,419	7,500	Fee 7-15-69	D4434-534
48269	HUGHES	7,957		7,957	Fee 1-10-69	D4247-112
48270	GARDNER	7,553	1,997	7,553	Fee 1-10-69	D4227-114
48270	FERRIMAN				D.D. 5-9-73	D5764-100
48271	HAGEDORN	7,500	1,778	7,500	Fee 1-10-69	D4247-104
48271	FERRIMAN				D.D. 5-9-73	D5764-97
48272	FEHER	8,495		8,495	Fee 11-12-68	D4191-1
49466	JOHNSON	294		9,350	Fee 7-9-69	D4428-720
49467	KNIGHT	1,025		7,500	Fee 11-17-70	D4890-58
49468	DAVIS				D.D. 4-9-74	D6228-979

FOR CONTINUATION SEE MAP NO. F-1217-6

FOR CONTINUATION SEE MAP NO. F-1217-3

FOR CONTINUATION SEE MAP NO. F-1217-4

INTERSTATE

STATE OF CALIFORNIA
BUSINESS & TRANSPORTATION AGENCY
DEPARTMENT OF TRANSPORTATION

R/W MAP
NO. F-1217-5
07-LA-210-27.5

ISSUE DATE
HAB 1-27-69
HAB 3-14-69
HAB 4-1-69

FILE NO. 21444C(11)120
DATE 1-27-69

RWPE IOMITA
SR. BERG

LEGEND:
ACCESS DENIED
EXCLUDES STREET AREA
AREA IN SQUARE FEET UNLESS OTHERWISE NOTED
PREVIOUS RECORD DATA

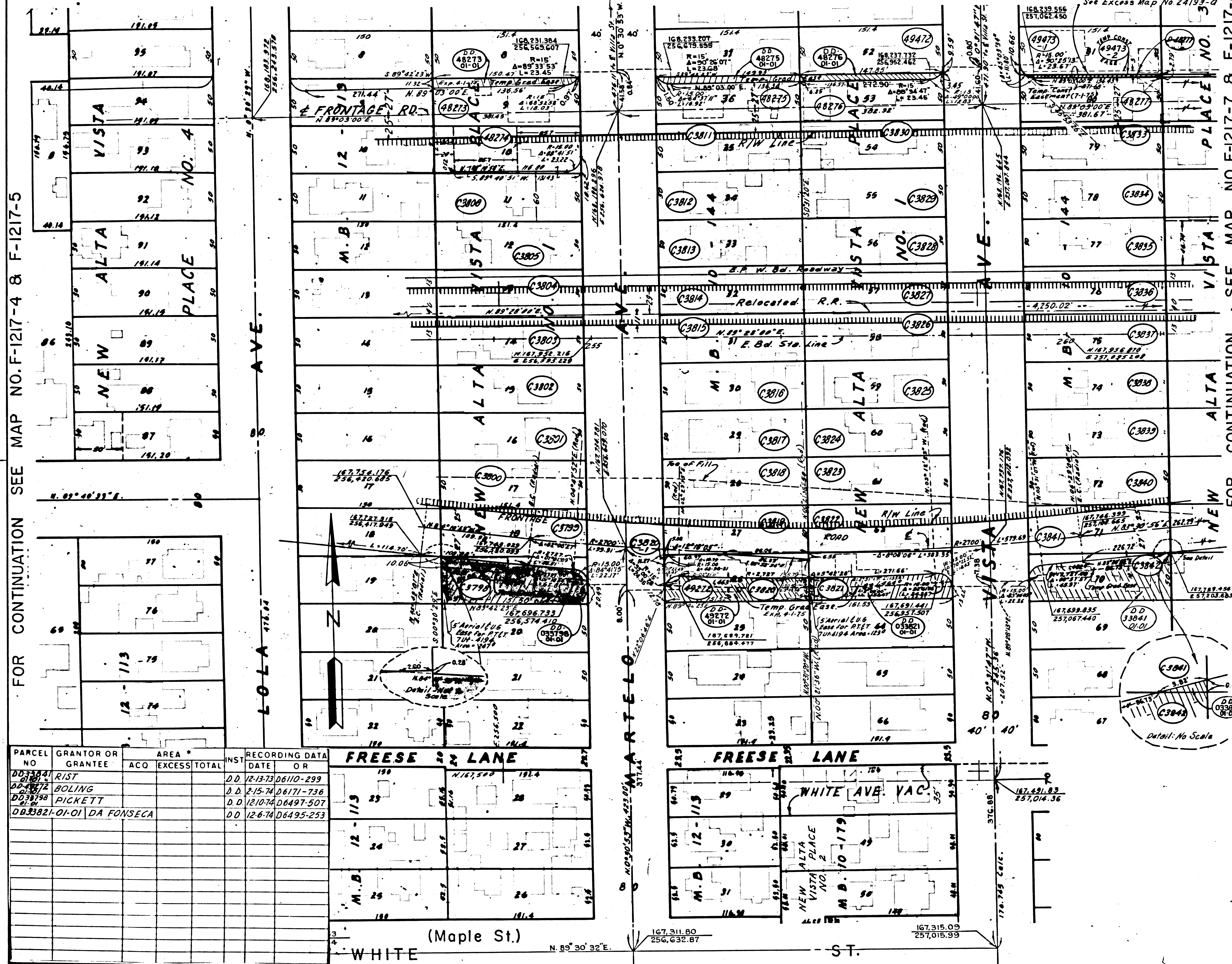
F.M. 21543-6

FM 21543-6

9-25-73

CITY OF PASADENA

B.P.A. STATE FEDERAL PROJECT NO. EFFECTIVE DATE SHEET NO. TOTAL SHEETS
 7 CALIF. T-210-1 (5) 25 10-30-63 16
 DISTRICT R/W AGENT FED. HWY. ADM. DATE



FOR CONTINUATION SEE MAP NO. F-1217-4 & F-1217-5

FOR CONTINUATION SEE MAP NO. F-1217-7 & F-1217-8

PARCEL NO.	GRANTOR OR GRANTEE	AREA * ACO EXCESS TOTAL	INST. RECORDING DATE OR
DD 33241	RIST		D.D. 12-13-73 06110-299
DD 33242	BOLING		D.D. 2-15-74 06171-736
DD 33198	PICKETT		D.D. 12-10-74 06497-907
DD 33221-01-01	DA FONSECA		D.D. 12-6-74 06495-257

PARCEL NO.	GRANTOR OR GRANTEE	AREA * ACO EXCESS TOTAL	INST. RECORDING DATE OR
199		1161.590 191.4	
113		244 20	
12-24		277 27	
M.B. 25		81.5 26	
118		111.4	
119		116.9	
115		69.71	
12-30		61.5 69	
M.D. 31		61.5 69	
69		116.9	
68		116.9	
67		116.9	
66		116.9	
65		116.9	
64		116.9	
63		116.9	
62		116.9	
61		116.9	
60		116.9	
59		116.9	
58		116.9	
57		116.9	
56		116.9	
55		116.9	
54		116.9	
53		116.9	
52		116.9	
51		116.9	
50		116.9	
49		116.9	
48		116.9	
47		116.9	
46		116.9	
45		116.9	
44		116.9	
43		116.9	
42		116.9	
41		116.9	
40		116.9	
39		116.9	
38		116.9	
37		116.9	
36		116.9	
35		116.9	
34		116.9	
33		116.9	
32		116.9	
31		116.9	
30		116.9	
29		116.9	
28		116.9	
27		116.9	
26		116.9	
25		116.9	
24		116.9	
23		116.9	
22		116.9	
21		116.9	
20		116.9	
19		116.9	
18		116.9	
17		116.9	
16		116.9	
15		116.9	
14		116.9	
13		116.9	
12		116.9	
11		116.9	
10		116.9	
9		116.9	
8		116.9	
7		116.9	
6		116.9	
5		116.9	
4		116.9	
3		116.9	
2		116.9	
1		116.9	

PARCEL NO.	GRANTOR OR GRANTEE	AREA * ACO EXCESS TOTAL	INST. RECORDING DATE OR
C3799	HANSEN	7,570	Fee 8-3-65 D3000-524
C3800	HATCHMAN	7,570	Fee 7-23-65 D2987-740
C3801	DARLAND	7,570	Fee 10-9-64 D2658-214
C3802	WAGNER	7,570	Fee 1-7-66 D3169-857
C3803	SAKEY	7,570	Fee 11-3-64 D2697-264
C3804	KELSO	7,570	Fee 10-30-64 D2642-654
C3805	DUNCAN	7,570	Fee 8-19-64 D2595-564
C3806	ESSENPREIS	7,912	14,140 Fee 5-11-67 D3639-479
C3811	ATHAY	7,570	Fee 3-31-66 D3255-530
C3812	INGRAM	7,570	Fee 11-26-65 D3126-645
C3813	BROTT	7,570	Fee 8-19-64 D2595-536
C3814	ROUNSFULL	7,570	Fee 8-19-64 D2595-533
C3815	PALAMIDAS	7,570	Fee 8-14-64 D2590-29
C3816	ESTES	7,570	Fee 8-14-64 D2590-62
C3817	MCLEOD	7,570	Fee 9-22-64 D2635-691
C3818	ZANDER	7,570	Fee 7-27-65 D2991-236
C3819	JOHNSON	7,570	Fee 8-30-65 D2996-356
C3820	RODNEY	281	7,570 Fee 11-23-65 D3123-545
C3820-1	RODNEY	18	7,570 Fee 11-23-65 D3123-545
C3821	VANDERHAAR	7,570	3,899 Fee 2-8-66 D3200-844
C3822	SAPERSTEIN	7,570	Fee 5-24-66 D3313-917
C3823	KARLYN	7,570	Fee 8-2-65 D2998-749
C3824	JONES	7,570	Fee 8-19-64 D2595-689
C3825	WALKER	7,570	Fee 10-14-64 D2662-170
C3826	ANGSTER	7,570	Fee 9-15-64 D2626-543
C3827	SMITH	7,570	Fee 8-20-64 D2597-216
C3828	COLUMBUS	7,570	Fee 9-29-64 D2644-10
C3829	HORNBY Adm.	7,570	Fee 12-21-64 D3513-375
C3830	HUNSICKER	7,570	Fee 2-10-66 D3203-488
C3833	BASORE	7,570	Fee 10-5-65 D3070-894
C3834	WILLIAMS	7,570	Fee 7-30-65 D2996-360
C3835	SPENCE	7,570	Fee 8-19-64 D2595-578
C3836	BROCK	7,570	Fee 8-19-64 D2595-576
C3837	WILLIAMS	7,570	Fee 10-1-64 D2647-942
C3838	DRYDEN	7,570	Fee 9-1-64 D2611-495
C3839	HARDNOCK	7,570	Fee 8-21-64 D2599-70
C3840	KOTULLA	7,570	Fee 7-30-65 D2996-360
C3841	MUCCI	7,570	2 Fee 7-23-65 D2987-714
C3842	MINTON	7,570	6,402 Fee 11-4-65 D3104-933
48273	PETERS	7,570	1,537 Fee 1-16-65 D4252-641
48274	ESSENPREIS	6,228	6,228 Fee 6-6-65 D4393-213
48215	CULEY	7,570	1,123 Fee 12-4-64 D4213-626
48276	NEAL	7,570	870 Fee 1-3-65 D4241-77
48277	HILL	7,570	514 Fee 5-16-64 D4371-638
48277	EATON		D.D. 5-17-72 05463-652
49470	GOETZ	2	7,570
49471	GOLUCCI	3	7,570
49472	MELDRUM	H	7,570 Fee
DD 33275	PALAZZOLO		D.D. 3-28-73 D5810-899
C3798	CRETZ	7,570	6,277 Fee 3-24-71 D5005-505
49272	RODNEY	7,277	3,871 Fee 12-2-69 D4569-928
49473-1	EATON	15	7,570 Fee 2-23-72 D5361-797
49473-2	EATON	445	7,570 Fee
DD 48276	MELDRUM		D.D. 12-12-73 D6108-618
DD 48273	GOETZ		D.D. 6-11-73 D5903-235

INTERSTATE

STATE OF CALIFORNIA
 BUSINESS & TRANSPORTATION AGENCY
 DEPARTMENT OF TRANSPORTATION

R/W MAP
 NO. F-1217-6
 07-LA-210-27.7

ISSUE DATE
 J.N.S. 8-21-68
 H.A.B. 7-13-69
 K.S. 3-7-69
 C.D.S. 5-15-70

FILE NO. 12844-CIT 131
 DATE 8-9-66

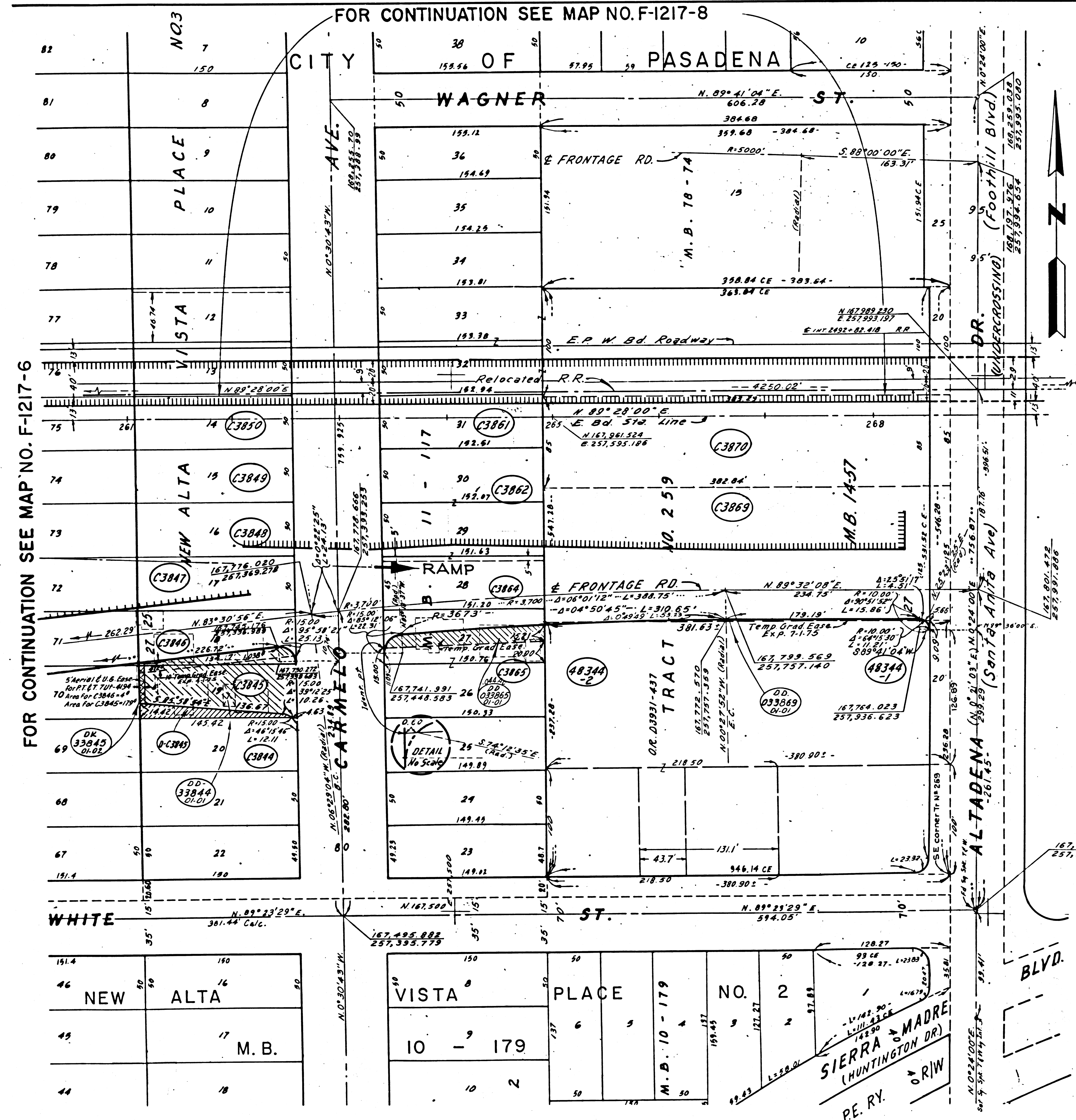
RW PE IOMITA SR. BERG

LEGEND:
 ■ ACCESS DENIED
 * AREA IN SQUARE FEET UNLESS OTHERWISE NOTED
 () PREVIOUS RECORD DATA

F.M. 21543-7

FM 21543-7

9-25-73



FOR CONTINUATION SEE MAP NO. F-1217-6

FOR CONTINUATION SEE MAP NO. F-1218-2

PARCEL NO	GRANTOR OR GRANTEE	AREA *			INST.	RECORDING DATA	
		ACQ	EXCESS	TOTAL		DATE	OR
C3844	BERG	15	15	7,500	FEE	2-14-66	D3206-347
C3845	CARNEY	7,500	7,500	7,500	FEE	10-5-65	D3070-892
D-C3845	BERG				D.D.	11-27-67	D3841-75
C3846	SAVIT	7,500	1,247	7,500	FEE	10-19-66	D3085-672
C3847	FISHER	7,500		7,500	FEE	9-7-66	D3040-321
C3848	DOWEY	7,500		7,500	FEE	7-13-64	D2546-495
C3849	PAPPALARDO	7,500		7,500	FEE	7-6-64	D2537-588
C3850	LEE	7,500		7,500	FEE	9-22-64	D2635-713
C3861	McKINLEY	7,637		7,637	FEE	7-13-64	D2546-499
C3862	MINOOGIAN	15,967		15,967	FEE	10-13-65	D3078-542
C3864	KARLYN	6,814		6,814	FEE	7-30-65	D2996-364
C3865	MISPAGEL	4,910	1,911	15,076	FEE	7-23-65	D2987-729
C3869	KELLY	45,314	156	45,314	FEE	5-27-64	D2486-576
C3870	BASORE	30,860		30,860	FEE	3-15-65	D2831-274
48344-1	R and S PROP.	15		1,236 AC	FEE	7-20-72	D5537-675
48344-2	"	113		"	FEE	7-20-72	D5537-675
DD 033866	L.M. MISPAGEL				D.D.	5-9-73	D5864-116
DD 033869	R and S PROP.				D.D.	9-25-73	D6029-631
DD 033844	BERG				D.D.	2-15-74	D6171-730
DK33845-01-02	BERG				D.D.	4-16-75	D6621-227

* Excess includes area of Easement

INTERSTATE

ISSUE DATE

STATE OF CALIFORNIA
 BUSINESS & TRANSPORTATION AGENCY
 DEPARTMENT OF TRANSPORTATION

R/W MAP
 NO. F-1217-7
 07-LA-210-27.9

FILE NO. 12921-C(II)-14
 DATE 3-14-69

SR. BERG

LEGEND:
 ACCESS DENIED + EXCLUDES STREET AREA
 * AREA IN SQUARE FEET UNLESS OTHERWISE NOTED
 () PREVIOUS RECORD DATA

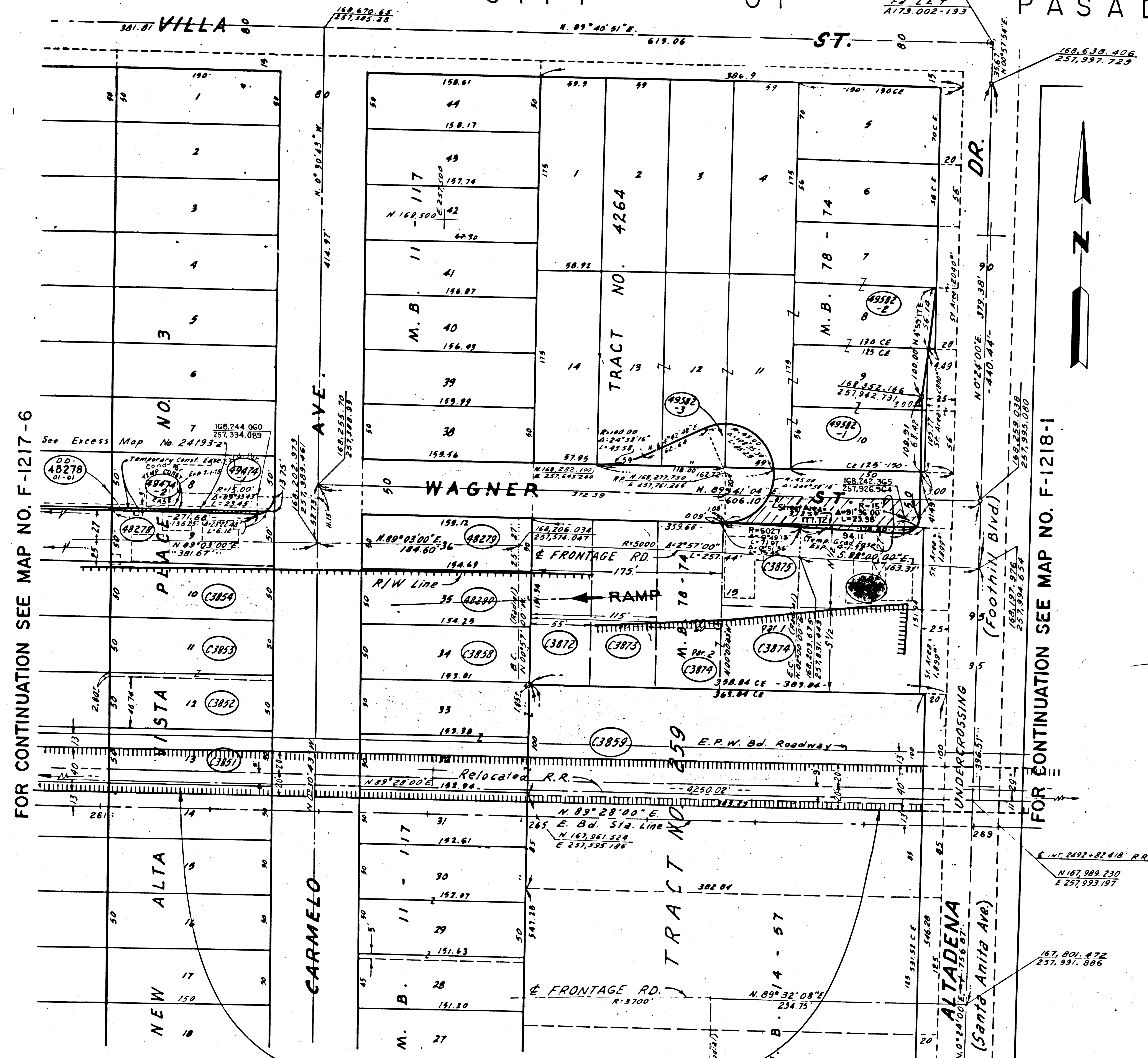
F.M. 21543-81

FM 21543-6

CITY OF PASADENA

F.P.R. REG. NO.	STATE	FEDERAL PROJECT NO.	EFFECTIVE DATE	SHEET NO.	TOTAL SHEETS
7	CALIF.	I-210-1(51)25	10-30-68	17a	

DISTRICT R/W AGENT: FED. HWY. ADM. DATE:



PARCEL NO.	GRANTOR OR GRANTEE	AREA * ACQ EXCESS TOTAL	INST.	RECORDING DATA DATE OR
C3851	KARLYN	7,500	7,500	Fee 9-4-64 D2616-970
C3852	STROEBEL	7,011	7,011	Fee 7-2-64 D2533-827
C3853	BABCOCK	7,989	7,989	Fee 9-28-65 D3062-570
C3854	SULAHIAN	7,500	7,500	Fee 9-24-65 D3059-580
C3858	FRYE	7,704	7,704	Fee 7-27-65 D2991-208
C3859	MIRROR BRY POLISHING CO.	51,738	51,738	Cond 5-25-66 D3315-878
C3872	OGILVIE	8,356	8,356	Fee 1-24-69 D4261-169
C3873	JACOB	9,116	9,116	Fee 10-10-68 D4159-241
C3874	RUDE	23,098	23,098	Fee 10-27-70 D4871-15
C3875	ARCADIA AIR PR. CO.	14,005	14,005	Fee 9-28-70 D4843-695
48278	YTURRELDE	7,500	281	7,500 Fee 10-21-68 D4169-191
48279	MOORE	7,745	7,745	Fee 10-21-68 D4169-203
48280	GRAIN	7,724	7,724	Fee 1-30-69 D4264-814
49582-1	GRINSTEAD	261	1,367Ac	Fee 6-30-72 D5514-327
49582-2	GRINSTEAD	126	1,367Ac	Fee 6-30-72 D5514-327
49582-3	GRINSTEAD	3510	1,367Ac	Fee 6-30-72 D5514-327
49474-1	ALVORD	34	7,500	Cond 2-21-73 D5768-318
49474-2	ALVORD	431	7,500	Cond 2-21-73 D5768-318
DD 48278	ALVORD			DD 7/13/73 D5946-170
DD 3875	BURK			DD 9/10/74 D6408-123

* Excess includes area of Easement

INTERSTATE

ISSUE DATE: 3-7-69 (HAB), 4-9-70 (HAB), 5-15-70 (CDS)

STATE OF CALIFORNIA
BUSINESS & TRANSPORTATION AGENCY
DEPARTMENT OF TRANSPORTATION

R/W MAP
NO. F-1217-8
07-LA-210-27.9

File No. 21002-C (11/162)
DATE 3-7-69
RWPE TOMITA SR. BERG

LEGEND: ACCESS DENIED (X) EXCLUDES STREET AREA
* AREA IN SQUARE FEET UNLESS OTHERWISE NOTED
() PREVIOUS RECORD DATA

FM 21543-9

FM 21543-9