

PARCEL NO.	GRANTOR OR GRANTEE	AREA*	EXCESS	TOTAL	RECORDING DATA
C3885	NOIL ET AL	6.212		6.212	Fee 4-21-70 D4690-314
C3887	PAS. BAPTIST CH. INC.	18.483		18.483	Fee 3-8-65 D2823-202
C3889	JOHNSON	6.212		6.212	Fee 8-20-60 D3072-285
C3901	BASQUIN	6.212		6.212	Fee 3-30-64 D2412-431
C3902	BANDEN	6.212		6.212	Fee 3-24-64 D2405-418
C3903	GREEN	6.212		6.212	Fee 11-4-60 D3480-51
C3904	MCANILEY	6.212		6.212	Fee 11-17-60 D3484-400
C3905	CONDON	6.212		6.212	Fee 5-6-60 D3992-480
C3906	SMITH	6.212		6.212	Fee 9-21-59 D4169-198
C3907	HECK	6.209		6.209	Fee 12-16-58 D4228-808
C3908	HART	6.212		6.212	Fee 5-10-60 D3997-829
C3909	SALSMAN	6.212		6.212	Fee 11-25-60 D3490-800
C3910	MCKENNA	6.212		6.212	Fee 12-30-60 D3519-762
C3911	AUPPERLE	6.212		6.212	Fee 3-26-64 D2418-452
C3912	PROVINE	6.212		6.212	Fee 3-25-64 D2407-401
C3923	MUNARIZ	6.212		6.212	Fee 7-12-64 D3998-251
C3924	ENGLISH	6.212		6.212	Fee 3-24-64 D2405-64
C3925	MEIS	6.212		6.212	Fee 1-3-67 D3521-770
C3926	DANMEYER	6.212		6.212	Fee 12-20-64 D3511-107
C3927	RANHOIST	6.212		6.212	Fee 5-14-64 D4000-443
C3928	HANSON	6.209		6.209	Fee 1-2-69 D4239-908
C3929	SCHWARZ	6.212		6.212	Fee 5-15-64 D4001-764
C3930	JANSKY	6.212		6.212	Fee 8-14-67 D3734-73
C3931	ROTHBAERT	6.212		6.212	Fee 11-21-64 D3487-21
C3932	WHITLEY	6.212		6.212	Fee 4-3-64 D2419-256
C3933	STEVENS	6.212		6.212	Fee 3-16-64 D2395-805
C3941	BROWN	6.223		6.223	Fee 5-24-64 D2426-196
C3942	MCDONNELL	6.222		6.222	Fee 7-27-65 D2901-234
C3943	CAMPBELL	6.222		6.222	Fee 7-30-65 D2904-346
C3944	WIGRO	6.221		6.221	Fee 5-10-68 D3997-810
47990	McLAREN	6.218		6.218	Fee 7-2-68 D4252-315
47991	McPEER	6.217	917	6.217	Fee 3-12-69 D4304-211
C6960	McTIGHE	45		6.209	Fee 7-29-71 D5140-742
C6963	MENKO	52		6.208	Fee 10-27-71 D5235-738
C6964	ELIA	43		6.209	Fee 8-18-70 D4805-5
47989	PURNER	6.224	337	6.224	Fee 3-10-70 D4632-915
DD-4929	Smith				DD 12-31-73 D6126-899
49291	Noil et al	6.209	4.863	6.209	Fee 4-21-70 D4690-314
49292	BLUMER	6.209	4.832	6.209	Fee 4-21-71 D5032-479
49293	STUBE	1,129		6.209	Fee 7-6-70 D4763-833
49294	CHAPPEL	1,752		13,129	Fee 11-16-70 D4888-124
49295	MAFFEI	6,420	5,701	6,420	Fee 3-18-71 D4999-564
49296	MARGOLIS	631		6,420	Fee 7-19-71 D4946-485
49297	MAFFEI	682		7,596	Com 9-8-72 D5390-604
49353	NOLL, et al	6.212		6.212	Fee 4-21-70 D4690-314
49710	HUTCHENS	42	8	6.209	Fee 4-27-70 D4697-517
49354	Noil, et al	6.209		6.209	Fee 4-27-70 D4690-314
D-47991	State to Grace Saedi				DD 6-15-72 D5496-307
D-49295	State to L.P. Maffei				DD 9-15-73 D5604-235

FOR CONTINUATION SEE MAP NO. F-1218-3

FOR CONTINUATION SEE MAP NO. F-1217-8

FOR CONTINUATION SEE MAP NO. F-1218-2

ISSUE DATE
K.S. 6-3-69
J.V. 12-6-71

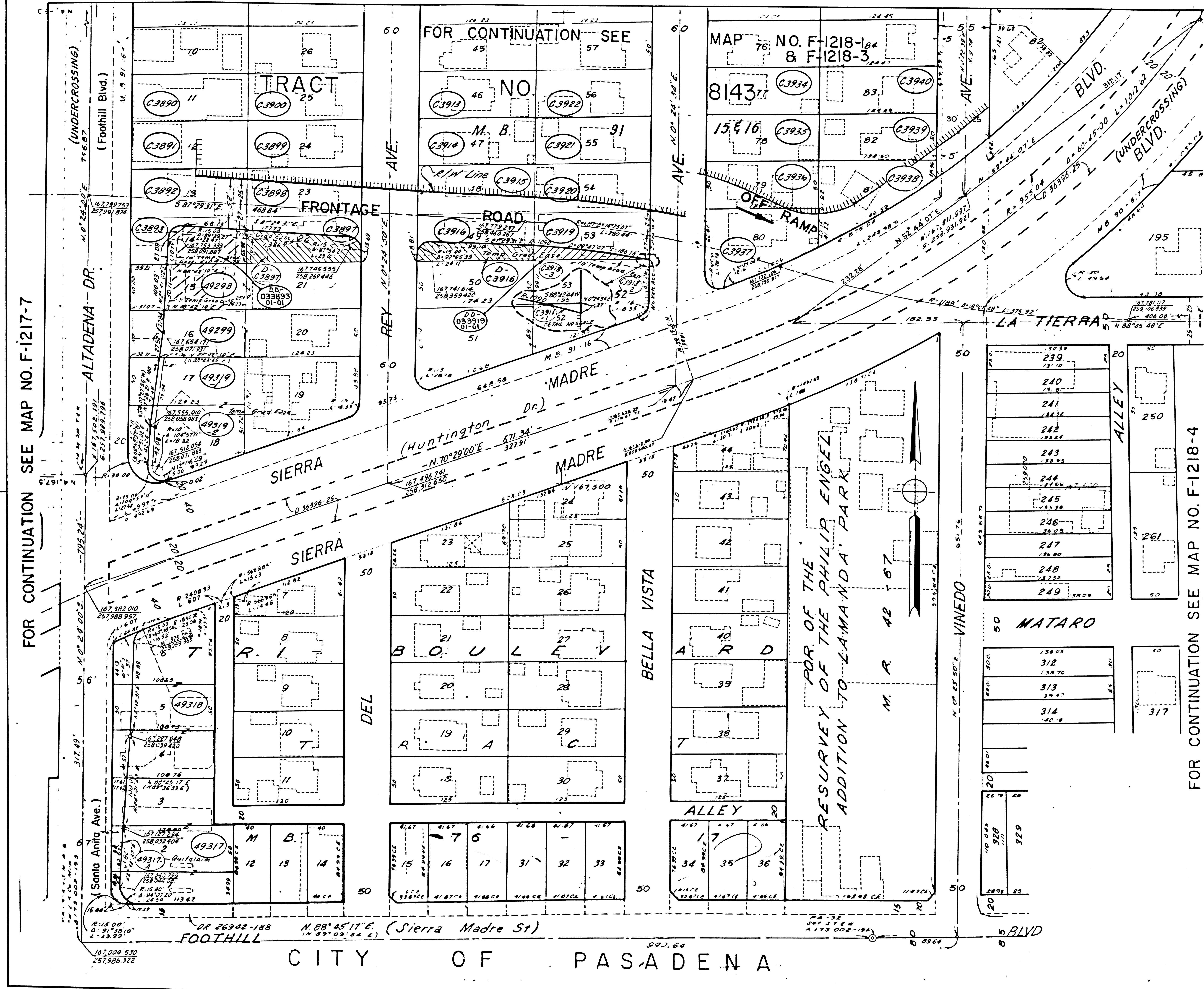
STATE OF CALIFORNIA
TRANSPORTATION DEPARTMENT OF
AGENCY PUBLIC WORKS
DIVISION OF HIGHWAYS

R/W MAP
NO. F-1218-1
07-LA-210-28.1
FILE NO. 1263-C (II-15)
DATE 1-14-69
RWPE TOMITA SR BERG

LEGEND:
ACCESS DENIED
EXCLUDES STREET AREA
AREA IN SQUARE FEET UNLESS OTHERWISE NOTED
PREVIOUS RECORD DATA

F.M. 21550-2

FM 21550-2



PARCEL NO	GRANTOR OR GRANTEE	ACO	EXCESS	TOTAL	INST.	RECORDING DATE	OR
C3890	WALL	6.212		6.212	Fee	7-27-60	D2991-268
C3891	FRICK	6.212		6.212	Fee	1-18-60	D3179-860
C3892	HAUSAM	6.212		6.212	Fee	10-30-60	D2682-629
C3893	STEIN	6.209	3.239	6.209	Fee	11-22-60	D3122-144
C3897	MOORE	6.209	3.957	6.209	Fee	8-24-60	D3025-368
C3898	ALFANO	6.212		6.212	Fee	3-30-60	D2412-421
C3899	STEIN	6.212		6.212	Fee	2-26-60	D2118-186
C3900	GUDBRANSON	6.212		6.212	Fee	3-27-60	D2410-802
C3913	COFFEEN	6.212		6.212	Fee	6-8-60	D2500-600
C3914	CRAWFORD	6.212		6.212	Fee	3-30-60	D2412-417
C3915	MASSIE	6.212		6.212	Fee	3-26-60	D2408-939
C3916	SANDSTROM	6.209	2.461	6.209	Fee	7-26-60	D2989-465
C3919	WILSON	6.209	1.125	6.209	Fee	7-28-60	D2992-913
C3920	TARLEY	6.212		6.212	Fee	3-23-60	D2407-404
C3921	MARKELL	6.212		6.212	Fee	4-1-60	D2416-167
C3922	WINCHELL	6.212		6.212	Fee	6-17-60	D2512-831
C3934	HOWARD	6.212		6.212	Fee	3-27-60	D2410-806
C3935	CRAINE	6.212		6.212	Fee	4-17-60	D2437-921
C3936	TUEPHER	6.212		6.212	Fee	1-21-60	D2172-25
C3937	THOMAS	8.030		8.030	Fee	11-6-60	D3116-38
C3938	HERNANDEZ	7.111		7.111	Fee	5-13-60	D2469-386
C3939	ROOSE	6.225		6.225	Fee	3-19-60	D2400-451
C3940	VAIL	6.224		6.224	Fee	4-6-60	D2422-89
C3918	PAPAIOANU	.77		18.275	Ease		
49298	LOUISIANA LOUVRES	4.998	3.080	4.998	Fee	4-4-72	D5415-59
49299	BRUMMETT	1.769		12.418	Fee	6-12-73	D5904-39
49317	RALSTON	1.871		10.348	Fee	5-3-72	D5448-179
49318	DICKSON	3.256		17.969	Fee	4-2-71	D5015-29
49319-1	SMITH	3.235		14.777	Fee	5-12-72	D5458-394
49319-2	SMITH	689		14.777	Ease		
C3918-1	PAPAIOANU	1		18.275	Fee	6-21-72	D5502-213
C3918-2	PAPAIOANU	65.24		18.275	Ease		
C3918-3	PAPAIOANU	319		18.275	Ease		
D-C3916	KRASTINS				D.D.	7-20-70	D5538-619
D-C3897	THIESSEN				D.D.	9-9-72	D5561-305
91-01	PAPAIOANU				D.D.	5-9-73	D5864-119
49317-A	ARCO				O.C.	5-3-72	D5448-176
D033893	BRUMMETT				D.D.	3-19-73	D6023-277

FOR CONTINUATION SEE MAP NO. F-1218-4

INTERSTATE

ISSUE DATE	K.S. 4-22-69
K.S. 6-12-69	
H.A.D. 3-19-70	
V.V. 12-6-71	

STATE OF CALIFORNIA
 BUSINESS & TRANSPORTATION AGENCY
 DEPARTMENT OF TRANSPORTATION

R/W MAP
 NO. F-1218-2
 07-LA-210-28.1

FILE NO. 21393 C(III-150)
 DATE 1-14-69

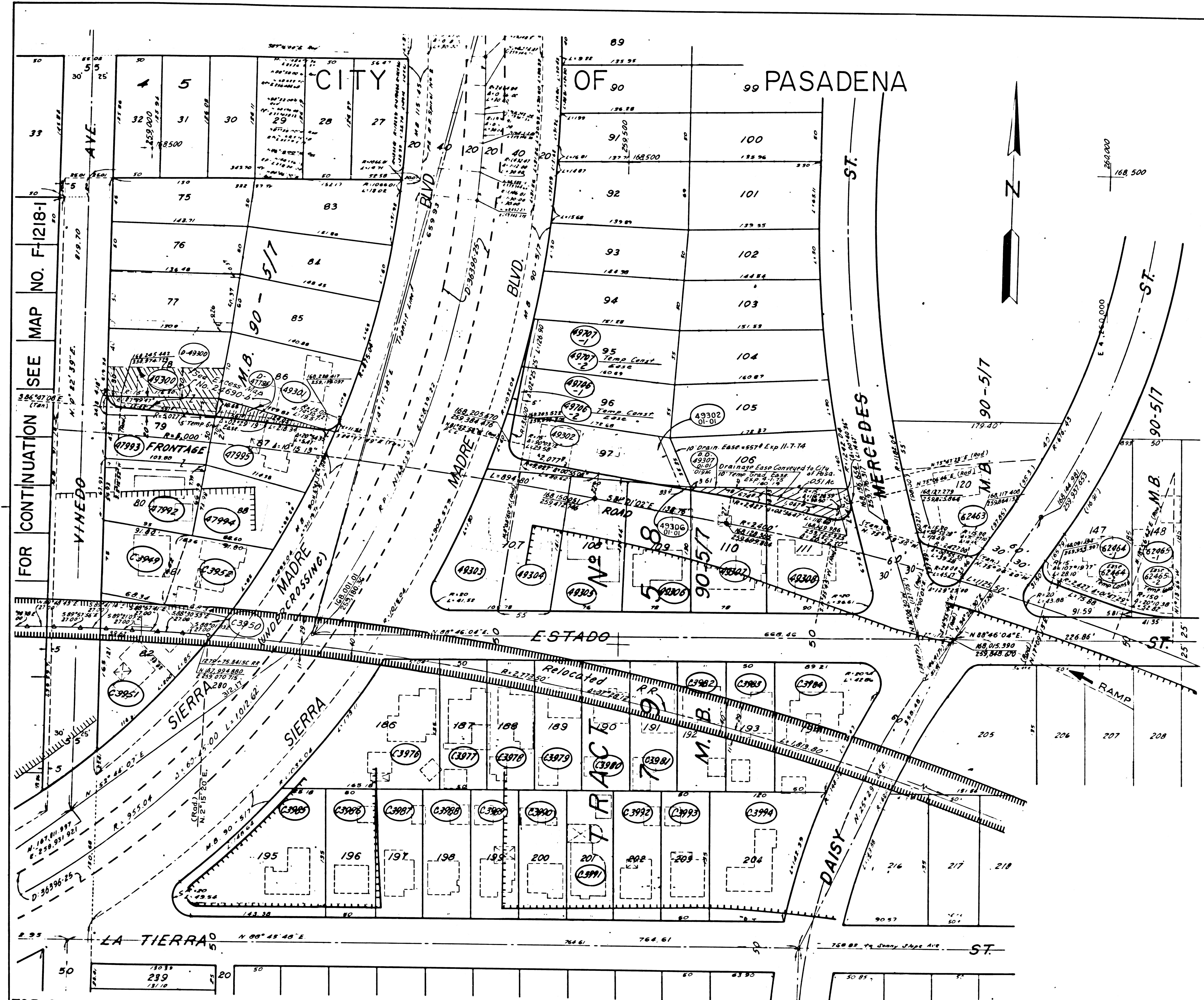
RWPE TCMITA SR BERG

LEGEND: ACCESS DENIED EXCLUDES STREET AREA
 * AREA IN SQUARE FEET UNLESS OTHERWISE NOTED
 () PREVIOUS RECORD DATA

F.M. 21550-3

FM 21550-3

9-2573



FOR CONTINUATION SEE MAP NO. F-1218-5

FOR CONTINUATION SEE MAP NO. F-1218-2

FOR CONTINUATION SEE MAP NO. F-1218-4

PARCEL NO	GRANTOR OR GRANTEE	AREA *		NST	RECORDING DATA	
		ACO	EXCESS		DATE	OR
C3976	HEBENSTREIT	14,525		Fee	3/1/64	D2390-597
C3977	MUSHRUSH	6,750		Fee	4/3/64	D2419-971
C3978	MOORE	6,750		Fee	1/30/64	D2341-385
C3979	WATTERS	6,750		Fee	3/30/64	D2412-419
C3980	GILLIS	6,750		Fee	3/4/64	D2381-779
C3981	VANDERHAAR	6,750		Fee	1/2/64	D2418-11
C3982	STUDE	6,750		Fee	2/28/64	D2376-238
C3983	HUNT	6,750		Fee	2/11/64	D2354-804
C3984	SEANOR	11,213		Fee	5/4/64	D2457-786
C3985	PRICE	15,192		Fee	9/27/65	D3061-116
C3986	GILES	6,750		Fee	3/16/65	D2833-67
C3987	SEGERS	6,750		Fee	4/1/65	D2853-201
C3988	NORDEN	6,750		Fee	7/30/65	D2996-348
C3989	SWENSEN	6,750		Fee	7/21/65	D2991-214
C3990	VAITKUS	6,750		Fee	1/29/65	D2994-501
C3991	ANDRUS	6,750		Fee	3/16/64	D2395-807
C3992	HATLEN	6,750		Fee	7/24/64	D2562-171
C3993	HILDRETH	6,750		Fee	3/31/64	D2414-270
C3994	EGOLF	12,867		Fee	3/27/64	D2410-798
C3949	GREENE	5,994		Fee	10/21/64	D2671-208
C3950	KEOSHEYAN	6,128		Fee	7/27/65	D2991-245
C3951	HILDRETH	6,134		Fee	3/27/64	D2410-808
C3952	DOBSCHEITZ	6,131		Fee	10/5/65	D3070-896
47992	ROSE	5,967		Fee	7/2/68	D4052-315
47994	JENSEN	7,068		Fee	7/9/68	D4058-710
47993	DALEY	5,884		Fee	10/28/65	D4538-368
47995	HEIMERL	8,494	1,184	Fee	10/20/69	D4529-935
49300	FERRIS	5,874	5,151	Fee	3/9/71	D4990-426
49302	GREENLEE	10,210	8,118	Fee	6/8/70	D4734-20
49303	RUSSELL	8,111		Fee	1/27/71	D4940-263
49304	VANDERHARR	7,925	7,825	Fee	1/25/71	D4951-473
49305	LIPPOLD	9,363	9,383	Fee	2/16/70	D4633-873
49306	THORNTON	9,280	64	Fee	12/26/69	D4591-273
49307	LEEY	10,140	835	Fee	5/5/70	D4704-476
49308	LINDSEY	12,692	2,221	Fee	8/3/70	D4790-691
49706-1	PYLE	258		Fee	8/10/71	D5153-530
49706-2	PYLE	248		Fee	8/6/67	
49707-1	JUDSON	51		Fee	8/13/71	D5157-632
49707-2	JUDSON	249		Fee	8/12/71	
62463	BENNETT	1,436		Fee	9/19/72	D5606-423
62464-1	HARRISON	2,723		Fee	6/27/72	D5509-135
62464-2	HARRISON	547		Fee	11/9/68	
62465-1	WORKS	79		Fee	1/4/71	D4942-534
62465-2	WORKS	210		Fee	9/25/70	
49301	ELVEY	19		Fee	1/25/71	D4951-468
D-49301	N SEASTEDT			DD	3/28/73	D5810-902
D-49302	V ELVEY			DD	7/19/72	D5537-22
D-49300	UNILAND CORP			DD	10/18/72	D5638-743

* Excess Includes Area of Easement

ISSUE DATE
 H.A.B. 6-19-69
 E.P. 5-12-70

STATE OF CALIFORNIA
 BUSINESS & TRANSPORTATION AGENCY
 DEPARTMENT OF TRANSPORTATION
 INTERSTATE
R/W MAP
 NO. F-1218-3
 07-LA-210-28.2
 FILE NO. 18011-C(III)6
 DATE 8-12-66
 RW PE TOMITA SR BERG

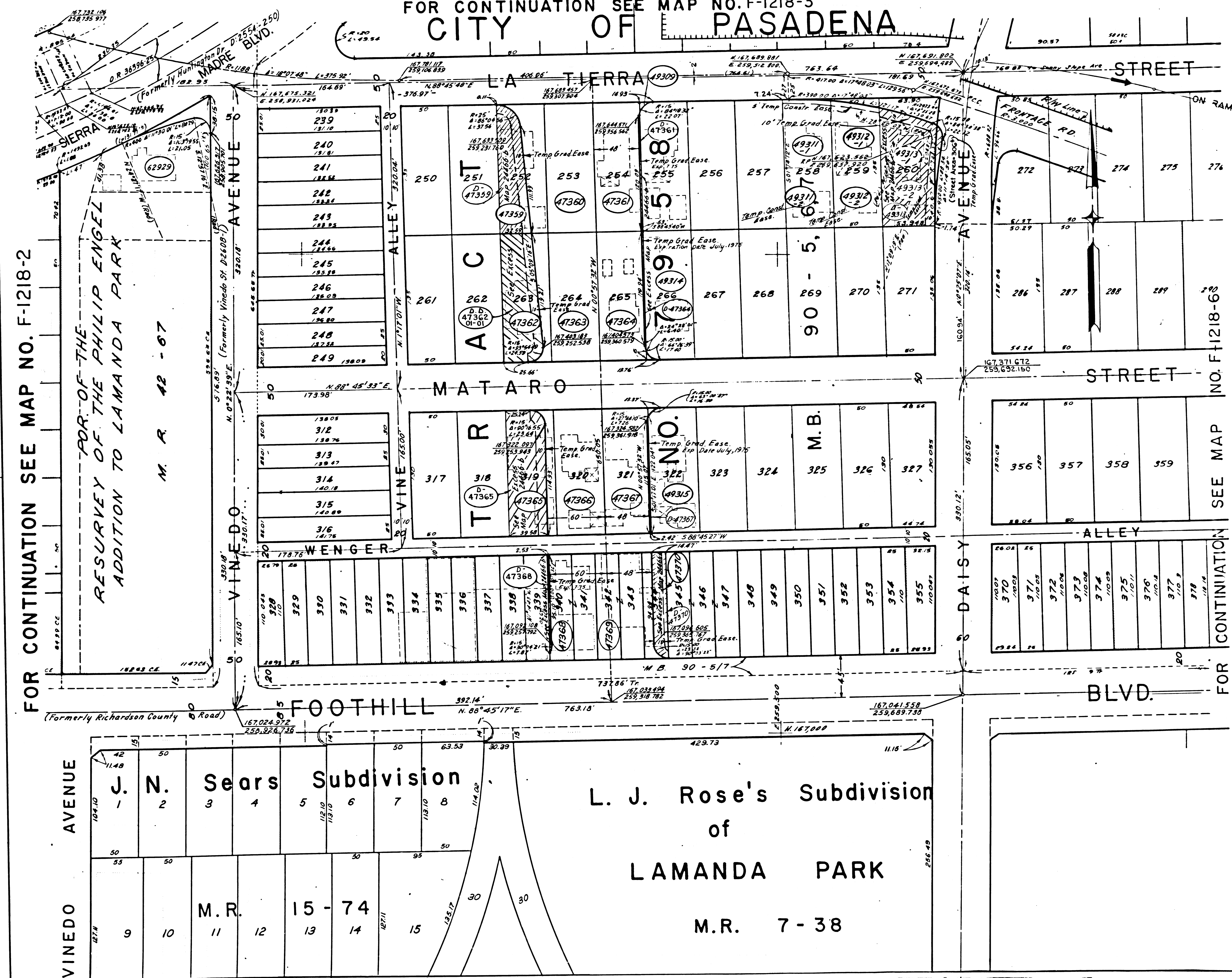
LEGEND: [Symbol] ACCESS DENIED [Symbol] EXCLUDES STREET AREA
 [Symbol] AREA IN SQUARE FEET UNLESS OTHERWISE NOTED
 [Symbol] PREVIOUS RECORD DATA

FM. 21550-4

FM 21550-4

9.25.73

FOR CONTINUATION SEE MAP NO. F-1218-3
CITY OF PASADENA



PARCEL NO	GRANTOR OR GRANTEE	AREA *		INST	RECORDING DATA		
		ACQ	EXCESS TOTAL		DATE	OR	
47359	COLE	6,750	3,669	6,750	Fee	5-21-64	04011-906
47360	OTTOSON	6,750		6,750	Fee	7-23-64	04075-38
47361	GRAY	6,750	35	6,750	Fee	5-23-68	04010-401
47362	HINDS	6,750	4,961	6,750	Fee	7-9-65	04059-696
47363	LAWTON	6,750		6,750	Fee	6-11-68	04027-886
47364	MOOTS	6,750	122	6,750	Fee	7-2-68	04052-320
47365	CABOT III	6,500	5,144	6,500	Fee	9-5-68	04088-968
47366	GARRIGAN	6,500		6,500	Fee	8-5-68	04088-964
47367	POSEY	6,500	249	6,500	Fee	7-8-68	04057-276
47368	ELEC. SERVS. CO.	5,500	229	5,500	Fee	5-20-71	05062-869
47369	RUKES	5,500		5,500	Fee	5-21-71	05064-272
47370	MERRY	2,750	1,573	2,750	Fee	4-21-69	04344-299
D-47364	ZUCCA			0.0	5.8-72	05453-621	
49309	KIBBE	47		6,750	Fee	3-9-70	04651-576
D-47370	ELEC. SERVS. CO.			0.0	8-8-72	05359-639	
D-47359	MADOLE			0.0	3-6-72	05359-346	
49311-1	WEST	34		6,750	Fee	1-26-72	05332-77
49311-2	WEST	250		6,750	Fee		
49312-1	RAACKE	312		6,750	Fee	11-29-71	05270-309
49312-2	RAACKE	254		6,750	Fee		
49313	LLOYD	7,737	6,510	7,737	Fee	11-4-70	04878-667
49314	ZUCCA	35		6,750	Fee	4-11-72	05422-590
49315	GIVEN	31		6,750	Fee	2-5-70	04645-675
D-49313	PEDERSEN			0.0	9-1-72	05591-163	
62929	FORDE	702		6,226	Fee	2-17-72	05356-585
D-47367	GIVEN			0.0	5-8-72	05453-270	
D-47368	MADOLE			0.0	3-30-73	05114-882	
D-47365	ALL STATE DEV.			0.0	9-8-72	05396-666	
D-47368	LAZARIAN			0.0	6-11-73	05903-218	
D-47361	KIBBE			0.0	6-11-73	05903-216	

* Excess includes Area of Easement

ISSUE DATE: 6-23-62, 4-22-72, 7-1-72, 11-17-70, 2-11-71

STATE OF CALIFORNIA
 BUSINESS & TRANSPORTATION AGENCY
 DEPARTMENT OF TRANSPORTATION

R/W MAP
 NO. F-1218-4
 07-LA 210 282

FILE NO. 19662-C(III-160)
 DATE 10-9-67

RW PE TOMLTA SR BERG

LEGEND: ACCESS DENIED, EXCLUDES STREET AREA, AREA IN SQUARE FEET UNLESS OTHERWISE NOTED, PREVIOUS RECORD DATA

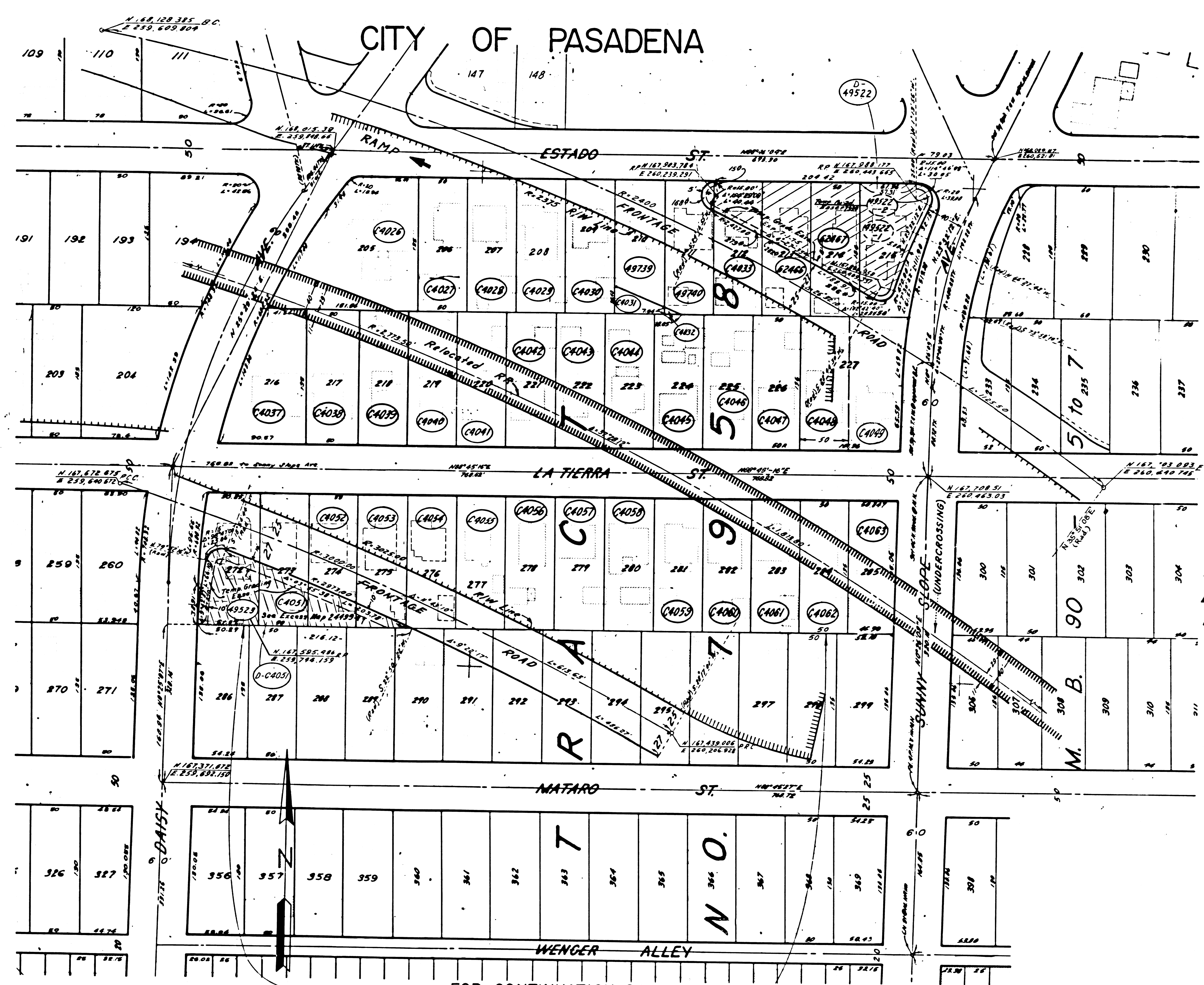
F.M. 21550-5

FM 21550-5

FOR CONTINUATION SEE MAP NO. F-1218-2

FOR CONTINUATION SEE MAP NO. F-1218-6

FOR CONTINUATION SEE MAP NO. F-1218-3



FOR CONTINUATION SEE MAP NO. F-1218-6

PARCEL NO.	GRANTOR OR GRANTEE	AREA*		RECORDING DATA
		TO BE ACQUIRED	EXCESS	
C4026	Christy, et ux	15,127	15,127	Fee 6-2-64 D2725-244
C4027	Come, et ux	6,750	6,750	Fee 3-17-65 D2834-64
C4028	Yates, et ux	6,750	6,750	Fee 4-16-65 D2871-425
C4029	Brolin	6,750	6,750	Fee 3-12-64 D2829-568
C4030	Fork, et ux	6,750	6,750	Fee 3-23-64 D2844-212
C4031	Seiler, et ux	902	6,750	Fee 11-14-64 D2840-57
C4032	Parker, et ux	69	6,750	Fee 12-9-64 D2802-867
C4037	Couch, et ux	9,276	9,276	Fee 4-17-64 D2437-946
C4038	Reynolds, et al.	6,750	6,750	Fee 5-25-64 D2483-263
C4039	Brady, et ux	6,750	6,750	Fee 4-28-64 D2450-240
C4040	Greason	6,750	6,750	Fee 4-6-64 D2422-87
C4041	Avery, et al.	6,750	6,750	Fee 4-28-64 D2450-234
C4042	Bollinger, et ux	6,750	6,750	Fee 4-17-64 D2437-946
C4043	Nelson	6,750	6,750	Fee 4-20-64 D2439-617
C4044	Levitt	6,750	6,750	Fee 4-3-64 D2430-806
C4045	Hayden, et ux	6,750	6,750	Fee 4-16-64 D2436-250
C4046	Delphy, et ux	6,750	6,750	Fee 4-10-64 D2428-978
C4047	Darman, et ux	6,750	6,750	Fee 3-12-65 D2829-579
C4048	Dunston, et ux	6,750	6,750	Fee 3-15-63 D2831-297
C4049	Nolan, et ux	7,308	7,308	Fee 3-30-64 D2849-410
C4051	Corwin, et ux	6,750	2,712	Fee 3-17-63 D2834-651
C4052	Mander, et al.	6,750	1,706	Fee 4-8-63 D2861-453
C4053	Otto, et ux	6,750	699	Fee 3-15-64 D2831-293
C4054	Wanamaker, et ux	6,750	5	Fee 4-2-63 D2854-999
C4055	Robbins	6,750	6,750	Fee 3-7-64 D2838-90
C4056	Woolsey	6,750	6,750	Fee 4-13-64 D2840-922
C4057	Rust, et ux	6,750	6,750	Fee 4-6-64 D2841-923
C4058	Carl	6,750	6,750	Fee 12-4-64 D2721-563
C4059	Farrier, et ux	6,750	6,750	Fee 4-17-64 D2837-948
C4060	Reisner, et ux	6,750	6,750	Fee 4-6-64 D2822-95
C4061	Glasgow, et ux	6,750	6,750	Fee 4-20-64 D2839-629
C4062	Lodwick, et ux	6,750	6,750	Fee 4-20-64 D2839-623
C4063	Kuharich	6,597	6,597	Fee 4-24-64 D2446-178
C4083	O'Neill	6,750	2,123	Fee 11-24-70 D4897-108
49739	Seiler	5,848	5,848	Fee 1-19-71 D4946-609
49740	Parker	6,681	288	Fee 1-19-70 D4892-932
D49522	Clarke	Q.C.	Q.C.	9-7-73 D6011-505
49522	Clarke	8,907	6,237	Fee 5-17-71 D5081-142
D-49523	St to Clarke (Corrected deed)	Q.D.	Q.D.	9-7-73 D6011-509
49523	Davis	7,829	4,210	Fee 11-19-70 D4802-868
62466	Kingsley, et ux	6,750	3,392	Fee 12-10-70 D4920-294
62467	Ralston	6,750	4,137	Fee 11-4-70 D4878-444
D-4051	St to Andries	Q.D.	Q.D.	1-7-73 D6073-106

* Excess includes Area of Easement (68) 3270

ISSUE DATE
 DEJ 11-24-67
 HAD 6-17-69
 HAD 4-8-70
 HAD 4-17-70

STATE OF CALIFORNIA
 BUSINESS & TRANSPORTATION AGENCY
 DEPARTMENT OF TRANSPORTATION

R/W MAP
 NO. F-1218-5
 07-LA-210-28.3

50 0 50 FILE NO. 12913-C(II-17)
 DATE 8-16-66
 RWPE TOMITA SR BERG

LEGEND: ACCESS DENIED EXCLUDES STREET AREA
 AREA IN SQUARE FEET UNLESS OTHERWISE NOTED
 PREVIOUS RECORD DATA

F.M. 21550-6

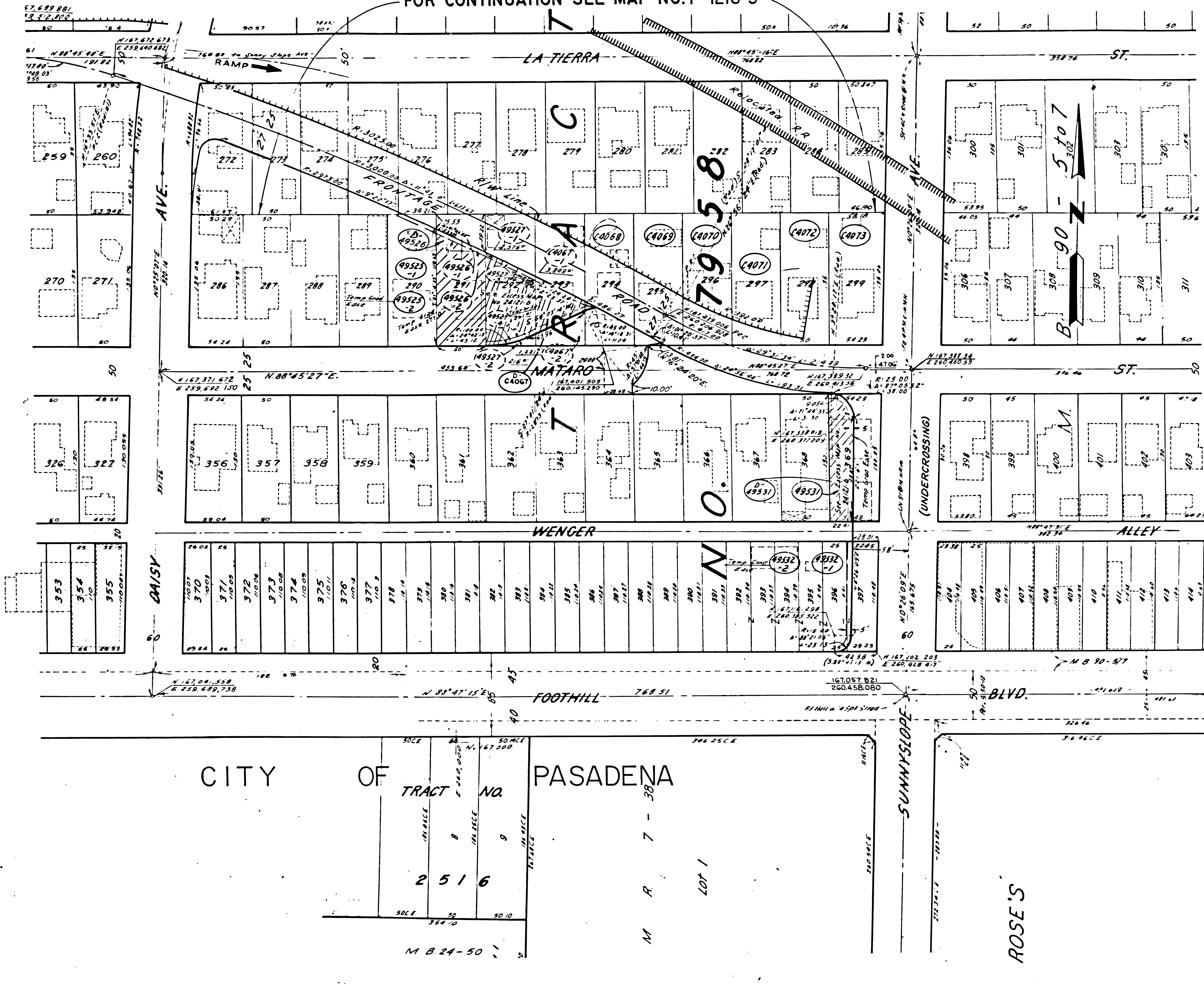
FM 21550-6

9 25 73

FOR CONTINUATION SEE MAP NO. F-1218-5

FOR CONTINUATION SEE MAP NO. F-1218-4

FOR CONTINUATION SEE MAP NO. F-1218-7



PARCEL NO.	GRANTOR OR GRANTEE	AREA*	EXCESS	TOTAL	INST. DATE	RECORDING DATA
▲C4067	Beck	6,750	1,680	6,750	Fee 6-23-70	D4748-570
▲C4068	Hollis	6,750	45	6,750	Fee 6-18-68	D4026-396
▲C4069	Sheffield	6,750		6,750	Fee 5-13-68	D3999-355
▲C4070	Kurata	6,750		6,750	Fee 3-3-65	D2849-412
▲C4071	Chiriac	6,750		6,750	Fee 3-18-65	D2836-414
▲C4072	Skilstad	6,750		6,750	Fee 3-18-65	D2836-412
▲C4073	Bedros	7,590		7,590	Fee 7-2-64	D2533-823
▲49525-1	Olin	264		6,750	Fee 2-15-70	D4916-669
▲49525-2		221		6,750	Fee	
▲49526	Olin	6,750	5,385	6,750	Fee 1-5-71	D4934-278
D-49526	St to State House Sales				D.D. 11-22-72	D5624-459
▲49527	Lindsay	6,750	3,958	6,750	Fee 6-3-70	D4790-679
D-49531	St to R.L. Gaskin				D.D. 8-21-72	D5574-535
▲49531	Keller	6,802	3,048	6,802	Fee 12-19-69	D4936-581
▲49532	Brown	3,136		12,202	Fee 1-25-72	D5330-736
▲49532-2		575			Fee	
D-C4067	State to C. McHenry, et al				D.D. 1-17-73	D5732-722

▲ Excess includes Area of Easement

66 3-2-70

ISSUE DATE
H.A.B. 6-17-69
H.A.B. 4-17-70

STATE OF CALIFORNIA
BUSINESS & TRANSPORTATION AGENCY
DEPARTMENT OF TRANSPORTATION
INTERSTATE
R/W MAP
NO. F-1218-6
07-LA-210-28.3

50 0 50
FILE NO. 22275-C(II-17)
DATE 8-17-69
R.W.P.E. TOMITA SR. BERG

LEGEND:
ACCESS DENIED
* AREA IN SQUARE FEET UNLESS OTHERWISE NOTED
() PREVIOUS RECORD DATA

CITY OF PASADENA

TRACT NO. 2516

M.R. 7-38

ROSE'S

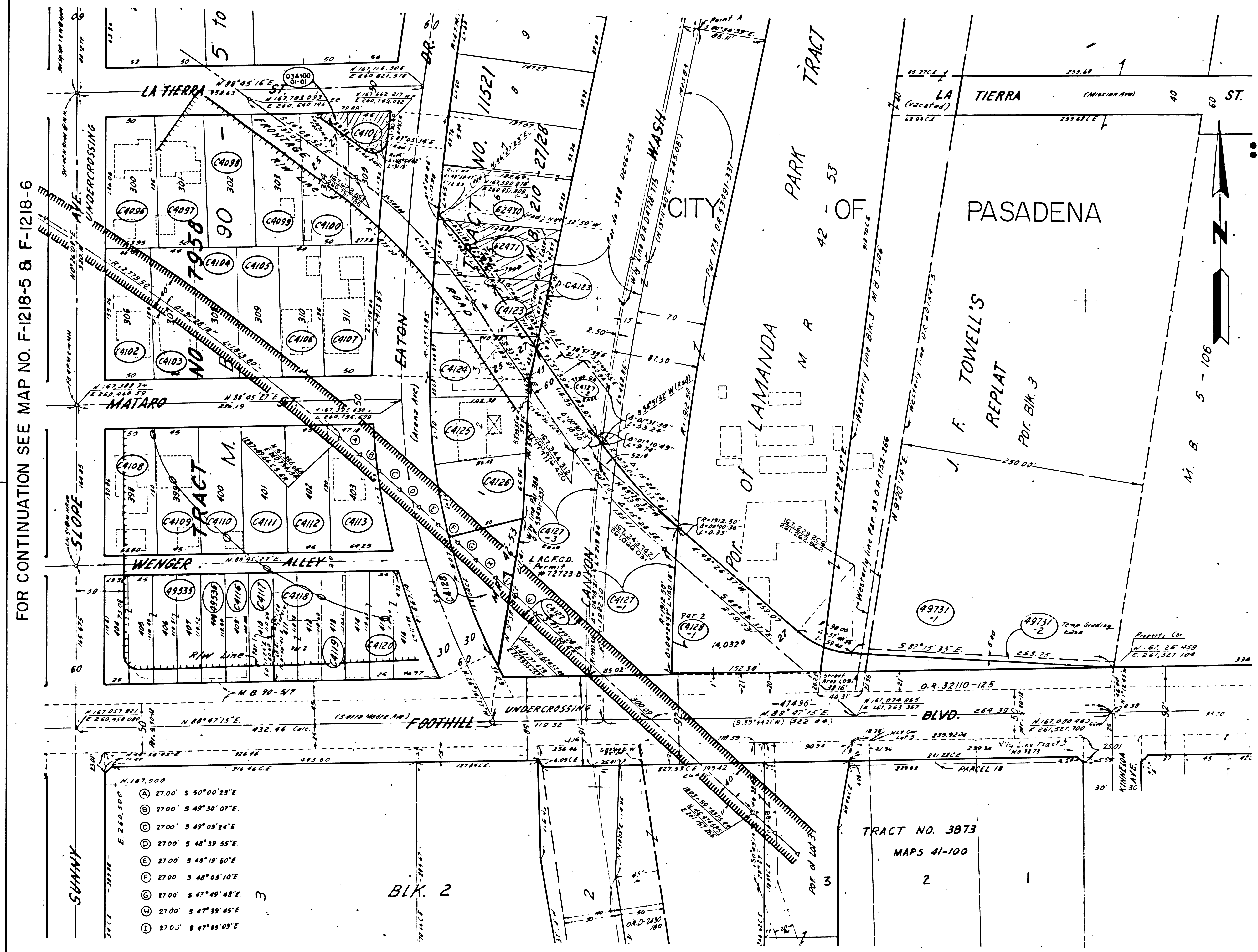
F.M. 21550-7

FM 21550-7

9 25 73

FOR CONTINUATION SEE MAP NO. F-1218-8

STATE FEDERAL PROJECT NO. 1030-63-20
 CALIF. F-210-1(5)125
 DISTRICT R.W. AGENT FED. HWY. ADM. DATE



PARCEL NO	GRANTOR OR GRANTEE	ACO	EXCESS	TOTAL	INST	RECORDING DATE	OR
C4096	NEWTON	7,019		7,019	Fee	2/24/64	D2369-528
C4097	PROVINE	6,750		6,750	Fee	1/14/65	D2163-946
C4098	CUMMINGS	6,750		6,750	Fee	1/7/65	D2756-87
C4099	DILL	6,750		6,750	Fee	6/30/66	D3351-973
C4100	PADILLA	6,750	478	6,750	Fee	2/22/66	D3511-146
C4101	MCKENNA	4,822	1,598	4,822	Fee	2/6/67	D3350-908
C4102	JENSEN	6,485		6,485	Fee	2/14/67	D2358-815
C4103	DE NOY	5,940		5,940	Fee	2/14/67	D2358-855
C4104	PETERSON	5,940		5,940	Fee	3/9/67	D2386-984
C4105	MCCONNELLY	5,940		5,940	Fee	2/18/67	D2362-700
C4106	GRAHMA	5,940		5,940	Fee	2/19/67	D2364-211
C4107	MAGGIO	7,313		7,313	Fee	2/18/67	D2362-490
C4108	MOORE	6,747		6,747	Fee	1/22/65	D2773-736
C4109	MARKS	5,850		5,850	Fee	2/9/65	D2792-733
C4110	EING	5,850		5,850	Fee	4/1/64	D2416-165
C4111	JONES	5,850		5,850	Fee	2/14/67	D2358-869
C4112	LUNDEEN	5,850		5,850	Fee	2/18/67	D2364-319
C4113	HUNTER	6,959		6,959	Fee	2/14/67	D2358-865
C4116	LAZARIAN	2,764		2,764	Fee	4/21/70	D4590-918
C4117	GASKIN	2,729		2,729	Fee	1/25/72	D5330-739
C4118	TOMLIN	5,566		5,566	Fee	4/2/70	D4674-422
C4119	COHEN	2,765		2,765	Fee	10/31/67	D3815-852
C4120	NEWELL	8,302		8,302	Fee	8/2/66	D3385-647
C4123	KENNEY	6,760	1,945	6,760	Fee	10/14/66	D3454-663
D.C.4123	W BRAND				D.D.	12/1/72	D5686-249
C4124	SWAFFIELD	6,574	31	6,574	Fee	6/6/66	D3326-127
C4125	STONE	6,394		6,394	Fee	12/29/64	D2746-132
C4126	KLEIN	6,153		6,153	Fee	2/18/66	D2362-705
C41271	LA C.F.C.	15,735		15,735	Fee	4/26/71	D5036-877
C41272	"	3,074		3,074	Temp. Easement		
C41273	"	19,031		19,031	East		
C41274	"	4,260		4,260	East		
C4128	CITY OF PASADENA	6,012		6,012	Fee	4/28/71	D5039-661
C4128-1	"	15,844		15,844	50% Fee	4/28/71	D5039-661
49535	GASKIN	11,104		11,104	Fee	1/25/72	D5330-741
49536	OAKLEY	2,763		2,763	Fee	5/12/70	D4710-355
49731-1	SO. CAL. ED. CO.	2,206		2,206	Fee	1/11/74	D6130-124
49731-2	"	1,258		1,258	Temp. Easement		
62470	MILLER	35		7,241	Fee	1/14/71	D4942-537
62471	HADLEY	6,615	4,688	6,615	Fee	1/15/71	D4943-884
4034100	LAYKIN				D.D.	3/7/75	D6580-38

▲ Excess Area Includes Easement Area
 ■ Area to be Acquired Includes Street Area
 ● To be relinquished to City per Memo dated 12.12.72

FOR CONTINUATION SEE MAP NO. F-1218-5 & F-1218-6

FOR CONTINUATION SEE MAP NO. F-1218-9

- SUNNY
- (A) 27'00" S 50°00'29"E
 - (B) 27'00" S 49°30'07"E
 - (C) 27'00" S 49°05'24"E
 - (D) 27'00" S 48°39'55"E
 - (E) 27'00" S 48°18'50"E
 - (F) 27'00" S 48°05'10"E
 - (G) 27'00" S 47°49'48"E
 - (H) 27'00" S 47°39'45"E
 - (I) 27'00" S 47°39'03"E

ISSUE DATE	STATE OF CALIFORNIA
H.A.B. 5-28-69	BUSINESS & TRANSPORTATION AGENCY
K.S. 6-10-69	DEPARTMENT OF TRANSPORTATION
H.A.B. 7-7-69	INTERSTATE
C.D.S. 3-23-70	R/W MAP
H.A.B. 4-28-70	NO. F-1218-7
H.A.B. 5-18-70	07-LA-210-28.5
C.D.S. 6-10-70	FILE NO. J2917-C(118)
E.P. 1-20-70	DATE 5-28-69
J.V. 12-6-71	R/W PE TOMITA SR BERG

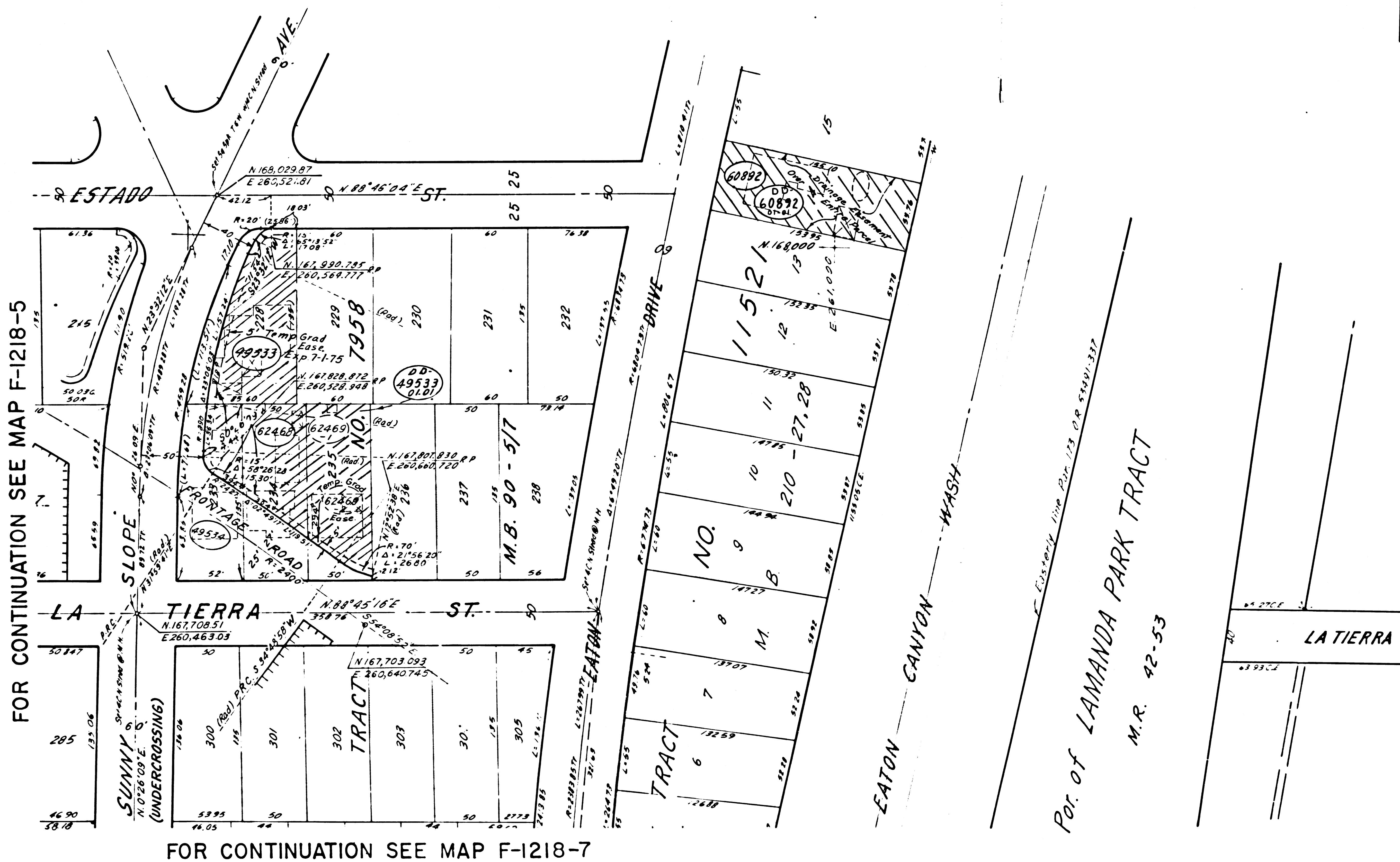
LEGEND: ACCESS DENIED EXCLUDES STREET AREA
 AREA IN SQUARE FEET UNLESS OTHERWISE NOTED
 PREVIOUS RECORD DATA

F.M. 21550-8

FM 21550-8

9.25.73

CITY OF PASADENA



FOR CONTINUATION SEE MAP F-1218-5

FOR CONTINUATION SEE MAP F-1218-7

PARCEL NO	GRANTOR OR GRANTEE	AREA *			INST	RECORDING DATA	
		ACQ	EXCESS	TOTAL		DATE	OR
▲ 49533	WRIGHT	8,832	7,111	8,832	FEE	2-23-71	D4976-509
▲ 49534	AYLOR	6,622	1,663	6,622	FEE	4-3-70	D4675-484
▲ 60892	MURTIS	8,404	8,404	8,404	FEE	3-26-70	D4668-61
▲ 62468	M.F. CALLAWAY	6,750	4,282	6,750	FEE	7-30-71	D5142-268
▲ 62469	E.J. KOSUTH	6,750	5,997	6,750	FEE	1-26-71	D4952-814
DD 49533	REYNOLDS					DD 3-11-74	D6195-617
DD 60892	LOYD					DD 9-12-74	D6411-462

▲ Excess includes Area of Easement

INTERSTATE

ISSUE DATE	STATE OF CALIFORNIA
H.A.B. 7-16-69	BUSINESS & TRANSPORTATION AGENCY
H.A.B. 11-21-69	DEPARTMENT OF TRANSPORTATION
J.G. 4-10-69	

R/W MAP
 NO. F-1218-8
 07-LA 210 28.5

50 0 50 FILE NO. 22192-C(II-18a)
 DATE 6-3-69
 RWPE TOMITA SR BERG

LEGEND: ACCESS DENIED EXCLUDES STREET AREA
 * AREA IN SQUARE FEET UNLESS OTHERWISE NOTED
 () PREVIOUS RECORD DATA

268 3-2-70

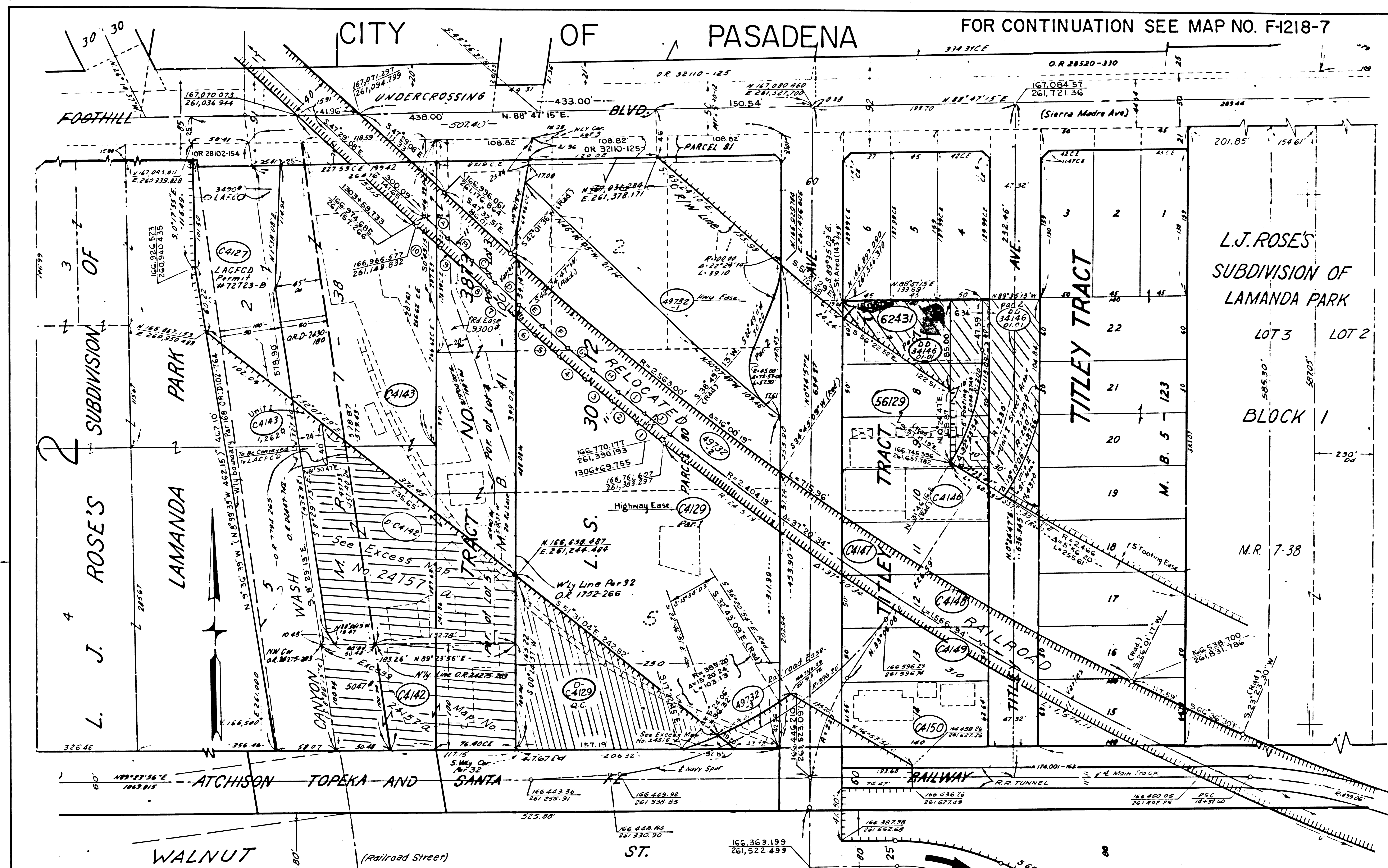
FM. 21550-9

FM 21550-9

9 25 73

CITY OF PASADENA FOR CONTINUATION SEE MAP NO. F-1218-7

STATE FEDERAL PROJECT NO. 10306321
 CALIF. I-210-1(51)25 10306321 SHEETS
 DISTRICT R & AGENT FED. HWY. ADM. DATE



FOR CONTINUATION SEE MAP NO. F-1218-10

PARCEL NO	GRANTOR OR GRANTEE	ACQ	EXCESS	AREA * TOTAL	INST DATE	RECORDING OR
C4129	SO CAL EDISON CO	108033		138749	Ease	7-25-67 D3712-663
C4129-1	"	580			Ease	7-25-67 D3712-663
C4142	REU BOIU	17541	17541	17541	Fee	4-19-65 D2872-883
C4143	1ST WEST BK	96,130	26,503	96,130	Fee	6-7-65 D2930-297
C4143	FORD				Fee	6-7-65 D2930-293
C4147	HUSBAND	7,000		7,000	Fee	1-20-69 D4255-520
C4148	MILLER	7,000		7,000	Fee	2-21-67 D3563-435
C4149	WEIRICK	7,000		7,000	Fee	3-17-67 D3556-504
C4150	AYALA	8,694		8,694	Fee	1-22-68 D3152-226
C4146	REDCO, INC.	7,000	242	7,000	Fee	6-2-69 D4387-362
D-C4142	AVON PRODING.				DD	10-13-72 D5634-518
D-C4129	SO CAL EDISON CO				DD	6-14-73 D5907-786
49732-1	SO CAL EDISON CO	24,550		30,716	Ease	1-11-74 D6136-124
49732-2	"	14,001			Fee	1-11-74 D6136-124
49732-3	"	1,739			Ease	1-11-74 D6136-124
C4127	LACO FL CONCH	13,968			Ease	
C4127-1	"					
C4127-2	"					SEE MAP NO F-1218-7
56129	GATES	14,000		14,000	Fee	2-31-70 D4818-616
62431	DEDERIAN	8,397		8,397	Fee	5-7-71 D5050-300
DD-34148	US of America				DD	3-20-74 D6421-339

(A) 31.00' S. 47° 29' 52" E.	(1) 31.15' N. 50° 49' 29" W.
(B) 31.00' S. 47° 34' 20" E.	(2) 31.13' N. 50° 09' 20" W.
(C) 31.00' S. 47° 43' 10" E.	(3) 31.11' N. 49° 34' 00" W.
(D) 31.00' S. 47° 56' 27" E.	(4) 31.09' N. 49° 02' 58" W.
(E) 31.00' S. 48° 14' 13" E.	(5) 31.08' N. 48° 36' 26" W.
(F) 31.00' S. 48° 36' 26" E.	(6) 31.06' N. 48° 14' 13" W.
(G) 31.00' S. 49° 02' 58" E.	(7) 31.05' N. 47° 56' 27" W.
(H) 31.00' S. 49° 34' 00" E.	(8) 31.04' N. 47° 43' 10" W.
(I) 31.00' S. 50° 09' 20" E.	(9) 31.02' N. 47° 34' 20" W.
(J) 31.02' S. 50° 49' 29" E.	(10) 31.01' N. 47° 29' 52" W.

L.S. 30-12
 Parcel 79

FOR CONTINUATION SEE MAP NO. F-1218-11

ISSUE DATE: 10-10-66, 7-6-67, 6-9-69, 7-2-69, 9-12-69, 12-2-69, 2-4-70, 5-11-70, 7-2-70, 6-4-71, 12-10-71

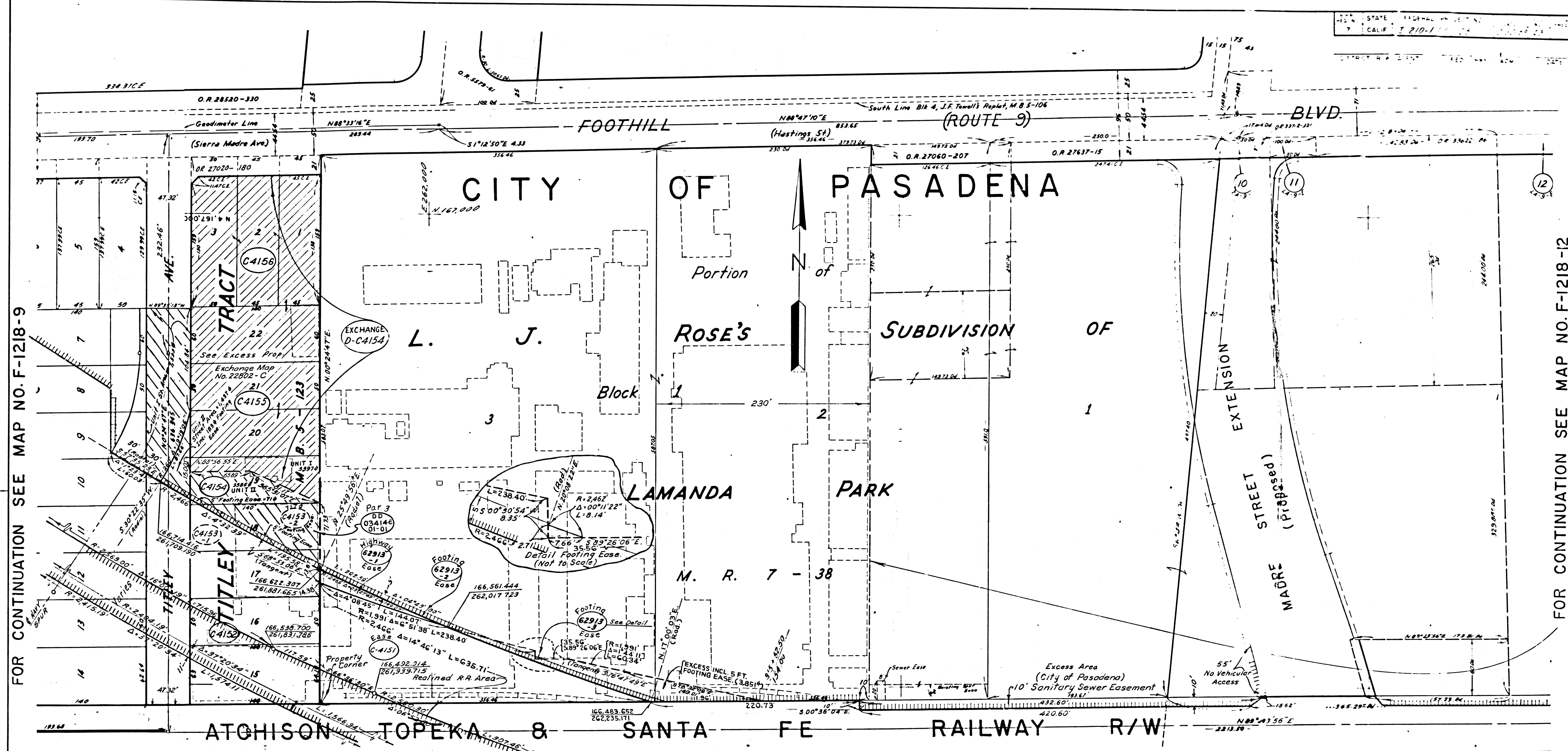
STATE OF CALIFORNIA
 BUSINESS & TRANSPORTATION AGENCY
 DEPARTMENT OF TRANSPORTATION
 INTERSTATE
R/W MAP
 NO. F-1218-9
 07-LA-210-28.6

FILE NO. 13240-C(III)-1
 DATE 5-16-66
 RW PE TOMITA SR BERG

LEGEND:
 ACCESS DENIED + EXCLUDES STREET AREA
 * AREA IN SQUARE FEET UNLESS OTHERWISE NOTED
 () PREVIOUS RECORD DATA

F.M. 21550-10

FM 21550-10



FOR CONTINUATION SEE MAP NO. F-1218-9

FOR CONTINUATION SEE MAP NO. F-1218-12

FOR CONTINUATION SEE MAP NO. F-1218-II

PARCEL NO.	GRANTOR OR GRANTEE	AREA*			INST.	RECORDING DATA		PARCEL NO.	GRANTOR OR GRANTEE	AREA*			INST.	RECORDING DATA	
		TO BE ACQUIRED	EXCESS	TOTAL		DATE	O.R.			TO BE ACQUIRED	EXCESS	TOTAL		DATE	O.R.
C4151	U.S.A.	35,171		352,197	Eas	9-17-69	D 4499-792								
C4152	Delgado	7,000		7,000	Fee	3-10-70	D 4652-917								
C4155	Martin, et ux.	14,000	14,000	14,000	Fee	10-13-66	D 3452-825								
C4156	" "	27,688	27,688	27,688	fee	1-23-64	D 3692-689								
C4153	Book, et ux.	14,000	4,865	14,000	Comd	12-20-71	D 5294-265								
C4154	Perez (Administratrix)	7,000		7,000	Fee	7-23-68	D 4075-42								
62913-1	U.S.A.	960		917,026	Ease	9-20-74	D 6421-344								
62913-2	"	880		917,026	Ease	9-20-74	D 6421-344								
62913-3	"	10		917,026	Ease	9-20-74	D 6421-344								
DC4154	State to U.S. of America				DD	10-19-70	D 4264-410								
DD 34746-21-01		For Grantor information see Map F1218-9													

327 9-21-70

ISSUE DATE

S.R.	11-30-67
H.A.B.	7-17-69
J.G.	10-28-70

STATE OF CALIFORNIA
 BUSINESS & TRANSPORTATION AGENCY
 DEPARTMENT OF TRANSPORTATION

R/W MAP
 NO. F-1218-10
 07-LA-210-28.8

50 0 50
 RWPE TOMITA SR BERG

LEGEND:
 ACCESS DENIED
 AREA IN SQUARE FEET UNLESS OTHERWISE NOTED
 () PREVIOUS RECORD DATA

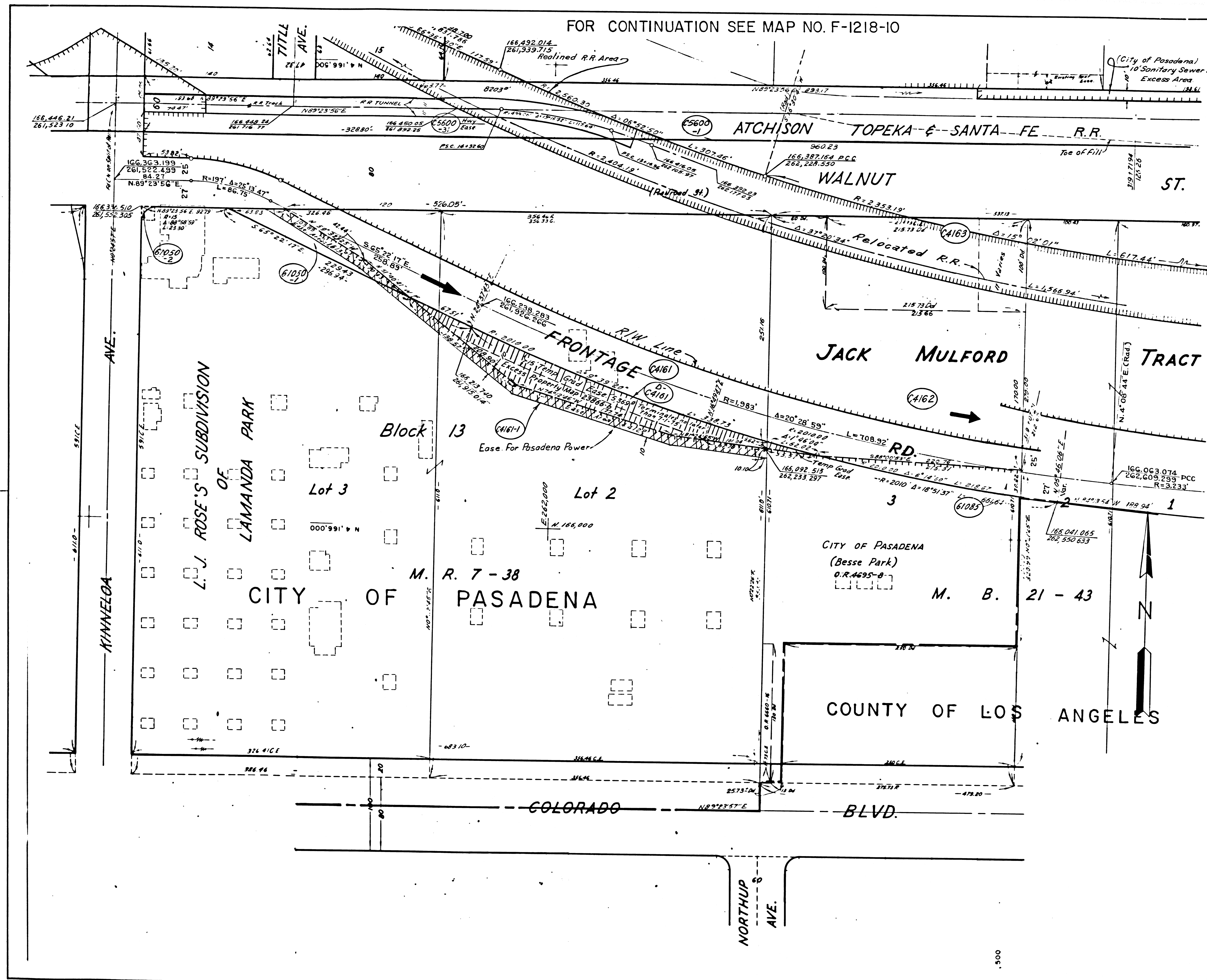
FM 21550-11

F.M. 21550-11

9-25-73

FOR CONTINUATION SEE MAP NO. F-1218-10

STATE FEDERAL PROJECT NO. 103063 22
 CALIF. I-210-1(51)25



FOR CONTINUATION SEE MAP NO. F-1218-13

PARCEL NO	GRANTOR OR GRANTEE	AREA *		INST	RECORDING DATA	
		ACO	EXCESS TOTAL		DATE	OR
▲ C4162	CITY OF PASADENA	50,967	205	102,377	Fee	9-11-67 D3733-239
C4163	BOYS CLUB OF PAS	21,573		21,573	Fee	8-7-67 D3727-60
▲ C4161	FED CO, INC	82,338	8,006	403,519	Fee	7-11-67 D3698-491
C4161-1	FEDCO TO CITY OF PAS	6,024			Ease	7-13-67 D3701-980
▲ 61050-1	FED EMP DIST CO	3,621		321,181	Fee	7-30-73 D5963-388
61050-2	"	46		321,181	Fee	7-30-73 D5963-388
61085	CITY OF PASADENA	3,752		58,410	Fee	3-18-71 D4929-570
D-C4161	FED EMP DIST CO				D.D	10-12-72 D5633-146

C5600-31	28,770	Ease
C5600-1	A.T.E'S F.R.R.	FOR AREAS SEE MAP NO. F-1218-12

▲ Excess includes area of Easement

2-20-70 8-11-29-71

ISSUE DATE	STATE OF CALIFORNIA
H.A.B. 7-17-69	BUSINESS & TRANSPORTATION AGENCY
H.A.B. 9-11-69	DEPARTMENT OF TRANSPORTATION
F.P. 3-16-70	INTERSTATE
J.G. 11-16-70	R/W MAP
F.P. 12-10-71	NO. F-1218-11

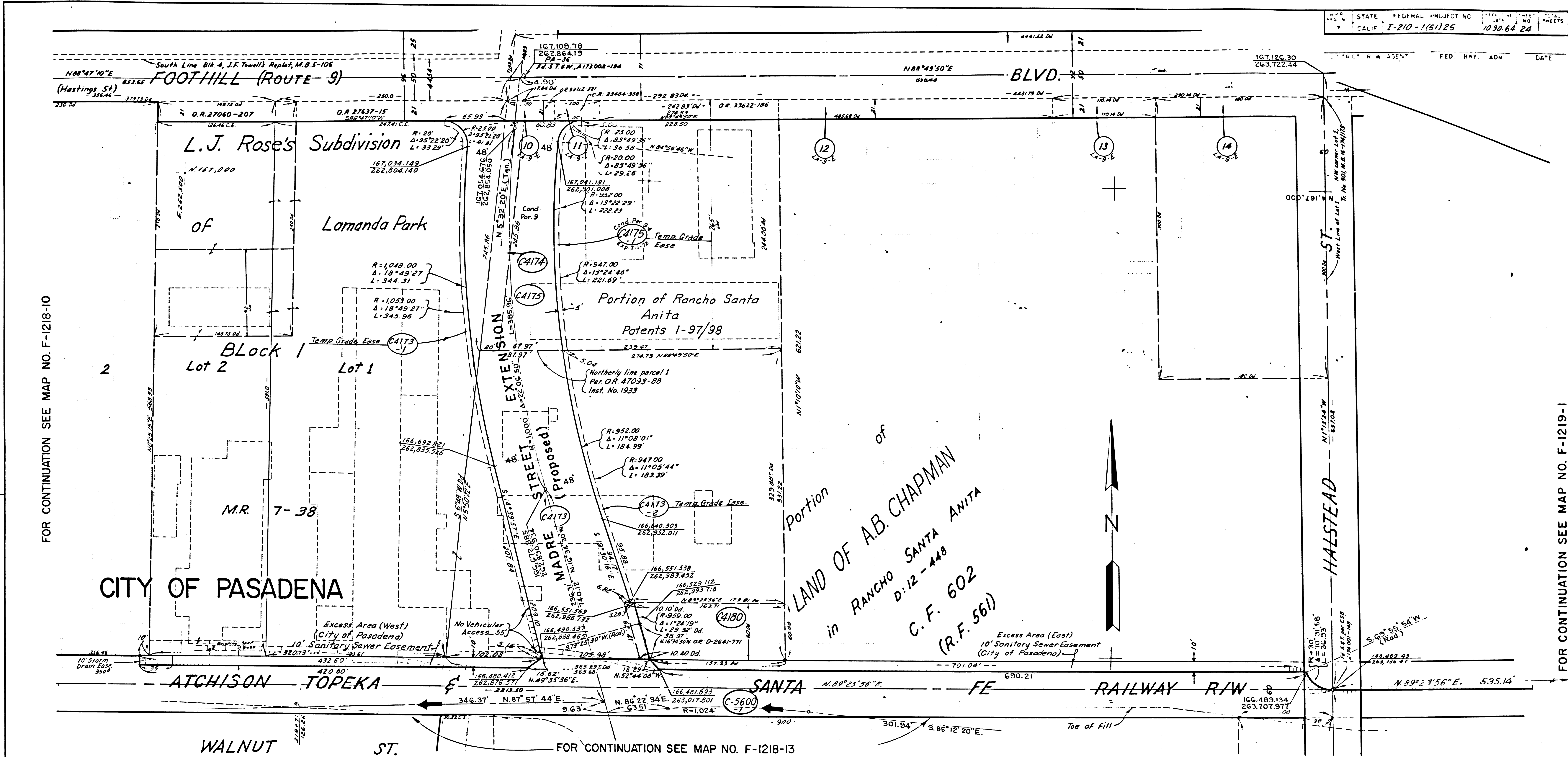
STATE OF CALIFORNIA
 BUSINESS & TRANSPORTATION AGENCY
 DEPARTMENT OF TRANSPORTATION
 INTERSTATE
R/W MAP
 NO. F-1218-11
 07-LA-210-28.8
 FILE NO. J3275-C(11)-2
 DATE 9-15-66
 R W P E TOMITA SR BERG

LEGEND: ACCESS DENIED EXCLUDES STREET AREA
 AREA IN SQUARE FEET UNLESS OTHERWISE NOTED
 PREVIOUS RECORD DATA

F.M. 21550-12

FM 21550-12

9-23-73



PARCEL NO.	GRANTOR OR GRANTEE	AREA*		INST.	RECORDING DATA		PARCEL NO.	GRANTOR OR GRANTEE	AREA*		INST.	RECORDING DATA	
		TO BE ACQUIRED	EXCESS TOTAL		DATE	O.R.			TO BE ACQUIRED	EXCESS TOTAL		DATE	O.R.
C4173	Johnston Pump Co	40,520	301,929	Fee	8-15-67	D3725-459							
C4174	Bray Corp	4,880	4,880	Fee	2-13-68	D3916-751							
C4175	Belvar Corp	11,832	70,860	Fee	7-10-70	D4769-425							
C4180	City of Pasadena	621	621	Fee	11-26-65	D3126-779							
C4173-1	Johnston Pump Co	2,955		Temp Easement									
C4173-2	Johnston Pump Co	1,395		Temp Easement									
C4175-1	Belvar Corp	1,275		Easement	7-10-70	D4769-425							
C5600-1	Hunt Industries	2,269	3,817	Ac. Fee									

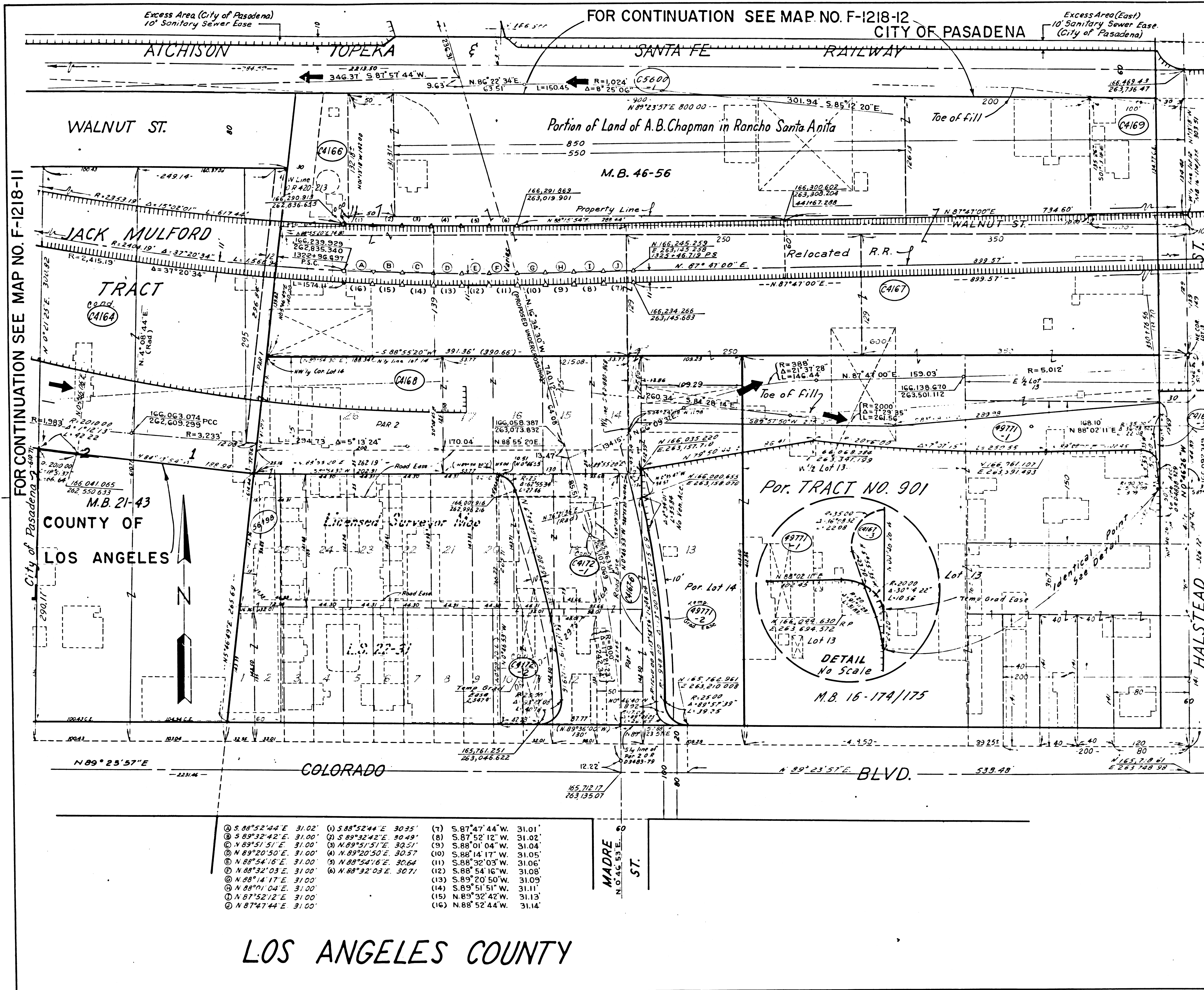
ISSUE DATE
 H.A.B. 7-17-69
 H.A.B. 9-18-69
 U.G. 10-28-70
 E.P. 9-29-71
 E.P. 12-10-71

STATE OF CALIFORNIA
 BUSINESS & TRANSPORTATION AGENCY
 DEPARTMENT OF TRANSPORTATION
 INTERSTATE
R/W MAP
 NO. F-1218-12
 07-LA-210-29

LEGEND:
 ACCESS DENIED
 AREA IN SQUARE FEET
 PREVIOUS RECORD

FM. 21550-13

FM 21550-13



STATE FEDERAL PROJECT NO. 7 CALIF. 7-210-1(5)25 103063 25
 DISTRICT R & AGENT FED. HWY. ADM. DATE

PARCEL NO	GRANTOR OR GRANTEE	ACQ	EXCESS	TOTAL	INST	RECORDING DATA
						DATE OR
C4164	KIEVMAN	73,783		134,332	Cond	10-26-70 D5647-449
C4166	EAST PAS WATER CO	9,369		9,369	Fee	5-3-66 D3291-363
C4167	SIMPSON	281,925		618,506	Fee	11-16-66 D3483-79
C4167-3	SIMPSON	208		618,506	Fee	11-16-66 D3483-79
C4167-6	SIMPSON	8,524		618,506	Fee	11-16-66 D3483-79
For C4167-1,4,5 See Map No. F-1219-1						
C4168	HENSON	43,100		43,100	Fee	11-30-71 D5271-454
56198	HENSON	10,066		22,014	Fee	1-11-72 D5315-645
C4169	ANGEL	9,432		9,432	Fee	7-27-65 D2991-247
C4172-1	GLATTS	22,228		34,680	Cond	1-16-73 D5731-864
C4172-2	GLATTS	2,547		34,680	Cond	1-16-73 D5731-864
49771-1	SIMPSON	22,331		4,168	Fee	9-22-70 D4838-329
49771-2	SIMPSON	2,501		4,168	Fee	9-22-70 D4838-329
C5600. IAT&S Railway For Area See Map No.						

FOR CONTINUATION SEE MAP NO. F-1218-II

FOR CONTINUATION SEE MAP NO. F-1219-I

- ① S. 88°52'44" E. 31.02'
- ② S. 89°32'42" E. 31.00'
- ③ N. 89°51'51" E. 31.00'
- ④ N. 89°20'50" E. 31.00'
- ⑤ N. 88°54'16" E. 31.00'
- ⑥ N. 88°32'03" E. 31.00'
- ⑦ N. 88°14'17" E. 31.00'
- ⑧ N. 88°01'04" E. 31.00'
- ⑨ N. 87°52'12" E. 31.00'
- ⑩ S. 88°52'44" E. 30.95'
- ⑪ S. 89°32'42" E. 30.49'
- ⑫ N. 89°51'51" E. 30.51'
- ⑬ N. 89°20'50" E. 30.57'
- ⑭ N. 88°54'16" E. 30.64'
- ⑮ N. 88°32'03" E. 30.71'
- ⑯ S. 87°47'44" W. 31.01'
- ⑰ S. 87°52'12" W. 31.02'
- ⑱ S. 88°01'04" W. 31.04'
- ⑲ S. 88°14'17" W. 31.05'
- ⑳ S. 88°32'03" W. 31.06'
- ㉑ S. 88°54'16" W. 31.08'
- ㉒ S. 89°20'50" W. 31.09'
- ㉓ S. 89°51'51" W. 31.11'
- ㉔ N. 89°32'42" W. 31.13'
- ㉕ N. 88°52'44" W. 31.14'

LOS ANGELES COUNTY

FM. 21550-14

ISSUE DATE
 H.A.B. 7-16-69
 J.G. 5-29-70
 J.V. 12-6-71
 J.V. 6-13-73

STATE OF CALIFORNIA
 BUSINESS & TRANSPORTATION AGENCY
 DEPARTMENT OF TRANSPORTATION
 INTERSTATE
 R/W MAP
 NO. F-1218-13
 07-LA-210-29.1
 FILE NO. 13632-C(III-4)
 DATE 11-2-66
 RWPE TOMITA SR BERG

LEGEND:
 ACCESS DENIED + EXCLUDES STREET AREA
 AREA IN SQUARE FEET UNLESS OTHERWISE NOTED
 () PREVIOUS RECORD DATA

FM 21550-14