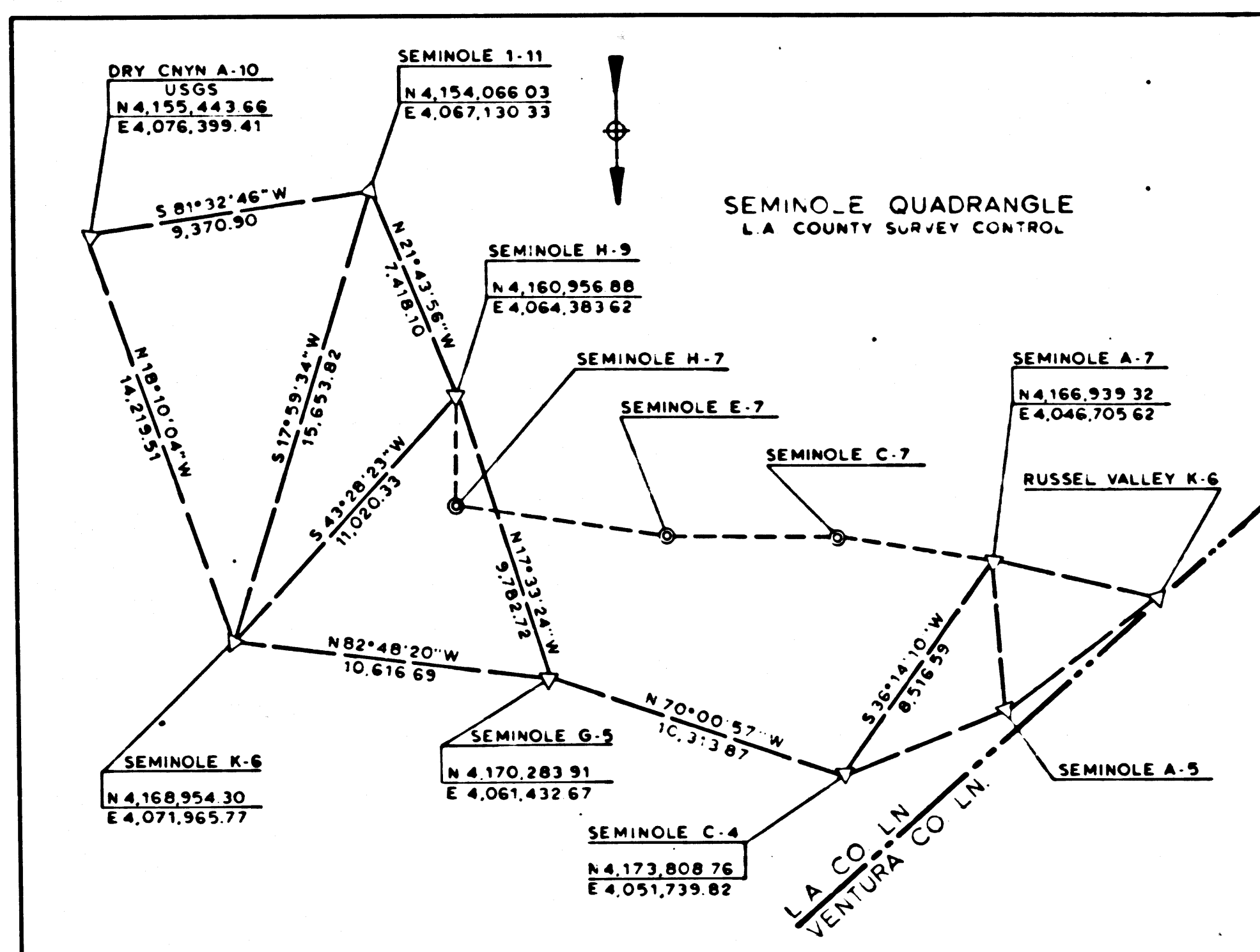


RANCHO LAS VIRGENES



NO	NAME	DESCRIPTION	REFERENCE	REMARKS
1	SEMINOLE E-7	FD LA CO SURV MON	SR73-405-16	
2	LA101M35-4	FD BR CAP MON	SR73-416-2	
3	CONTROL TIE	SET PK NAIL	SR73-327-39	
4	BC	SET SPK & W	ALA101F-6	
5	PI	"	"	
6	EC	FD SPK & W	SR73-327-30	
7	BC	SET SO SPK & BATHEY CAP	"	
8	POST	FD SPK & W	"	
9	PI	SET 2x4 & BATHEY CAP	"	
10	EC	SET SO SPK & BATHEY CAP	"	
11	POST	"	"	
12	BC	"	SR73-327-31	
13	PI	SET BT SPK W & T	"	
14	EC	SET SO SPK & BATHEY CAP	"	
15	R/W	SET 1" IP WITH PLASTIC CAP	SR74-155-6	
16	INTERSECTION	FD SPK & W	SR73-327-2	
17	BC	"	"	
18	PI	"	"	
19	POST	SET SPK & BATHEY CAP	"	
20	BC	"	"	
21	PI	"	"	
22	EC	"	"	
23	PI	"	SR73-327-3	
24	BC	SET SPK & W	ALA-101F-8	
25	BC	"	"	
26	BC	"	"	
27	PI	"	"	
28	EC	SET SPK & W	ALA-101F-9	
29	BC	"	"	
30	EC	"	"	
31	BC	"	"	
32	EC	"	"	
33	PI	FD LEAD & BRASS TAG	FB 3150-44	LACo ENG.
34	PI	"	FB 3150-111	"

TO OBTAIN GROUND LEVEL DISTANCES, MULTIPLY GRID DISTANCES SHOWN BY 1.000043060.

GRID WAS ESTABLISHED FROM L.A. CO TRIANGULATION STATIONS: SEE TRIANGULATION DIAGRAM ON MAP.

**LEGEND**

- — SURVEY CONTROL POINTS
- — MONUMENTS SET OR FOUND, ALSO B.C.'S AND EC.'S
- △ — ANGLE POINTS
- ◇ — SECTION CORNERS: RANCHO CORNERS
- M — GROUND DISTANCE MEASURED
- ( ) — VALUE ESTABLISHED BY DISTRICT OF RIGHT OF WAY BRANCH
- C — CALCULATED VALUE
- R — RECORDED VALUE AS ESTABLISHED PREVIOUSLY

**NOTE**

1. BEARINGS ARE BASED ON THE CALIFORNIA COORDINATE SYSTEM, DIVISION 8, SECTION 8009 OF THE 1923 PUBLIC RESOURCES CODE, & L.A. CO. GEODETIC STATIONS - SEMINOLE A-5, C-4, G-5, & H-9.

2. DEPT. OF TRANSPORTATION SURVEY INFORMATION IS AVAILABLE FROM THE ENGINEERING SERVICES BRANCH, SURVEY SECTION, LOS ANGELES, CALIFORNIA.

3. DEPT. OF TRANSPORTATION RIGHT OF WAY INFORMATION IS AVAILABLE FROM THE RIGHT OF WAY BRANCH, LOS ANGELES, CALIFORNIA.

4. STATIONING SHOWN ON THIS MAP IS FOR REFERENCE ONLY.

**IN LOS ANGELES COUNTY**  
BLK 1605

CONSTRUCTION CONTRACT NO. 07-10054  
COMPLETION DATE: JULY 1974

SCALE: 1" = 100'  
100 200 300 400 500 FEET

LOS ANGELES COUNTY FILE NO.

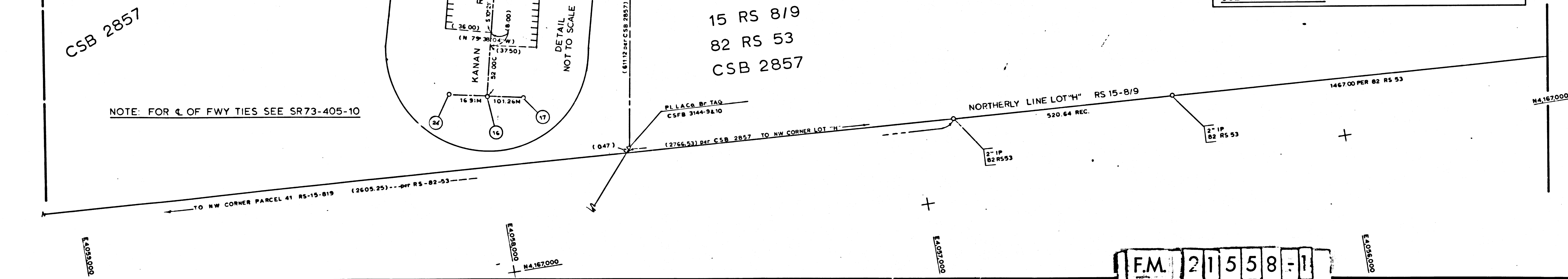
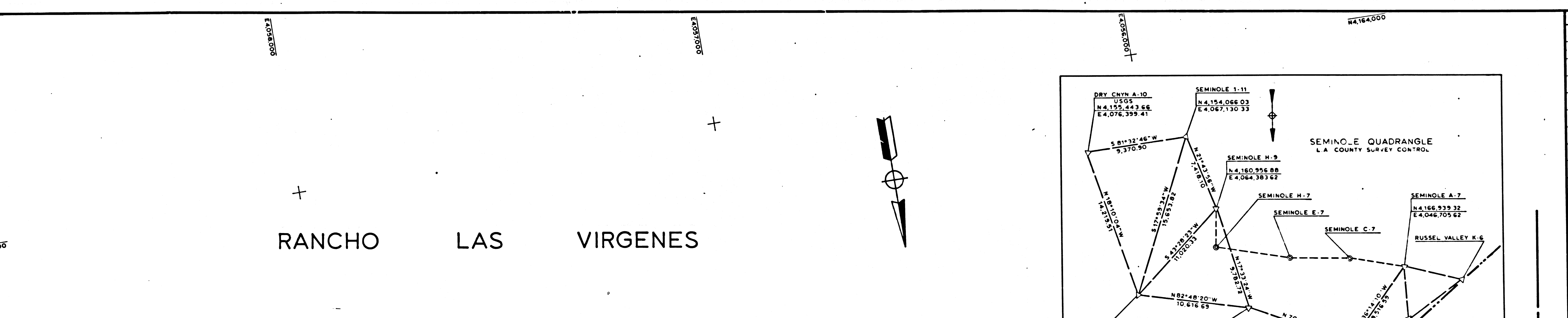
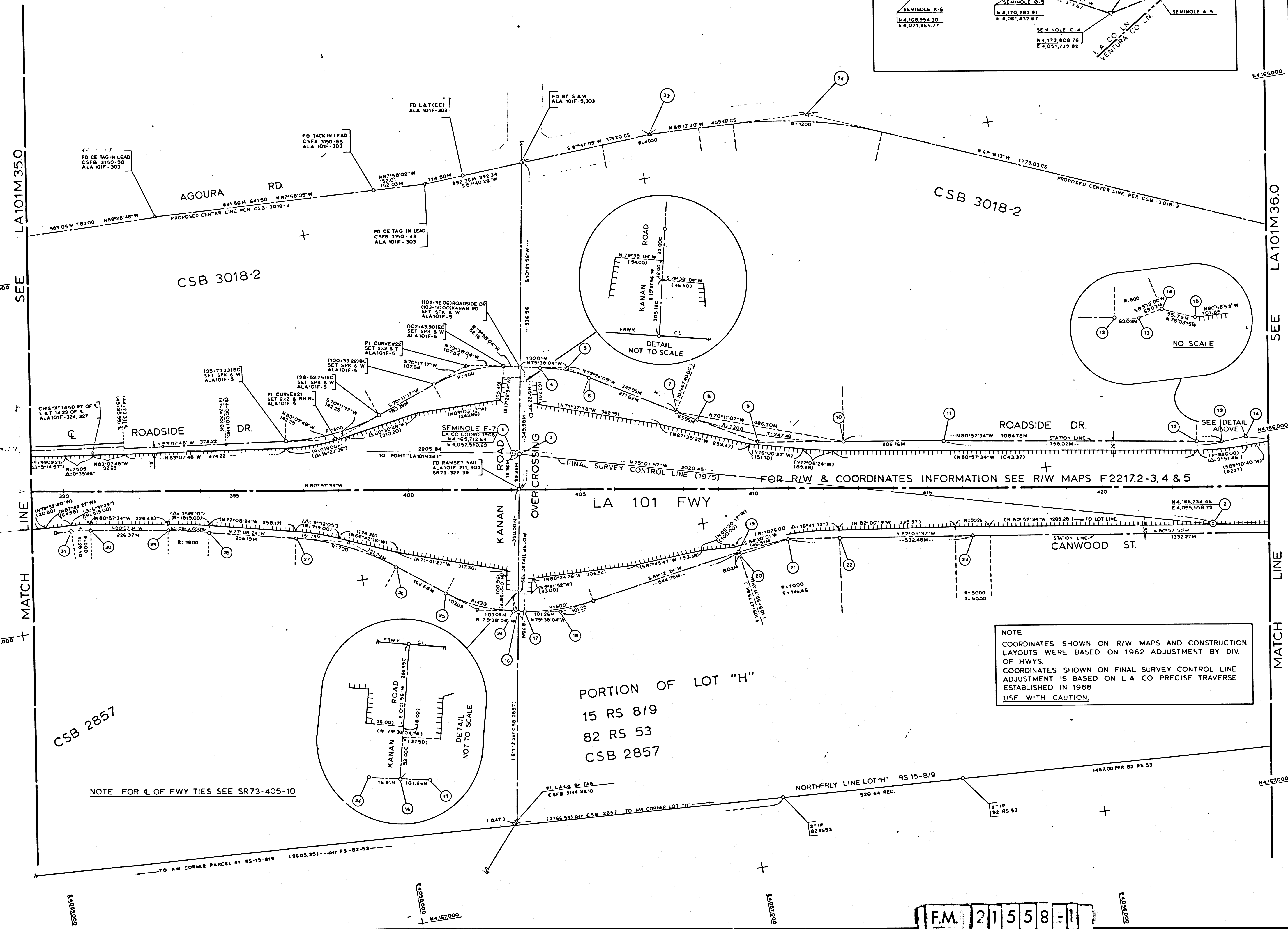
COUNTY	ROUTE	POST MILES - TOTAL PROJECT	SHEET NO.	TOTAL SHEETS
07	LA 101	34.4 - 38.2	1	5

STATE OF CALIF. DEPT. OF TRANSPORTATION  
SURVEYS

MONUMENTATION MAP  
DATUM CALIFORNIA COORDINATE SYSTEM - ZONE 7  
MAP NO. LA101M355

DATE: 7-31-75

F.M. 21558-1





# RANCHO LAS VIRGENES

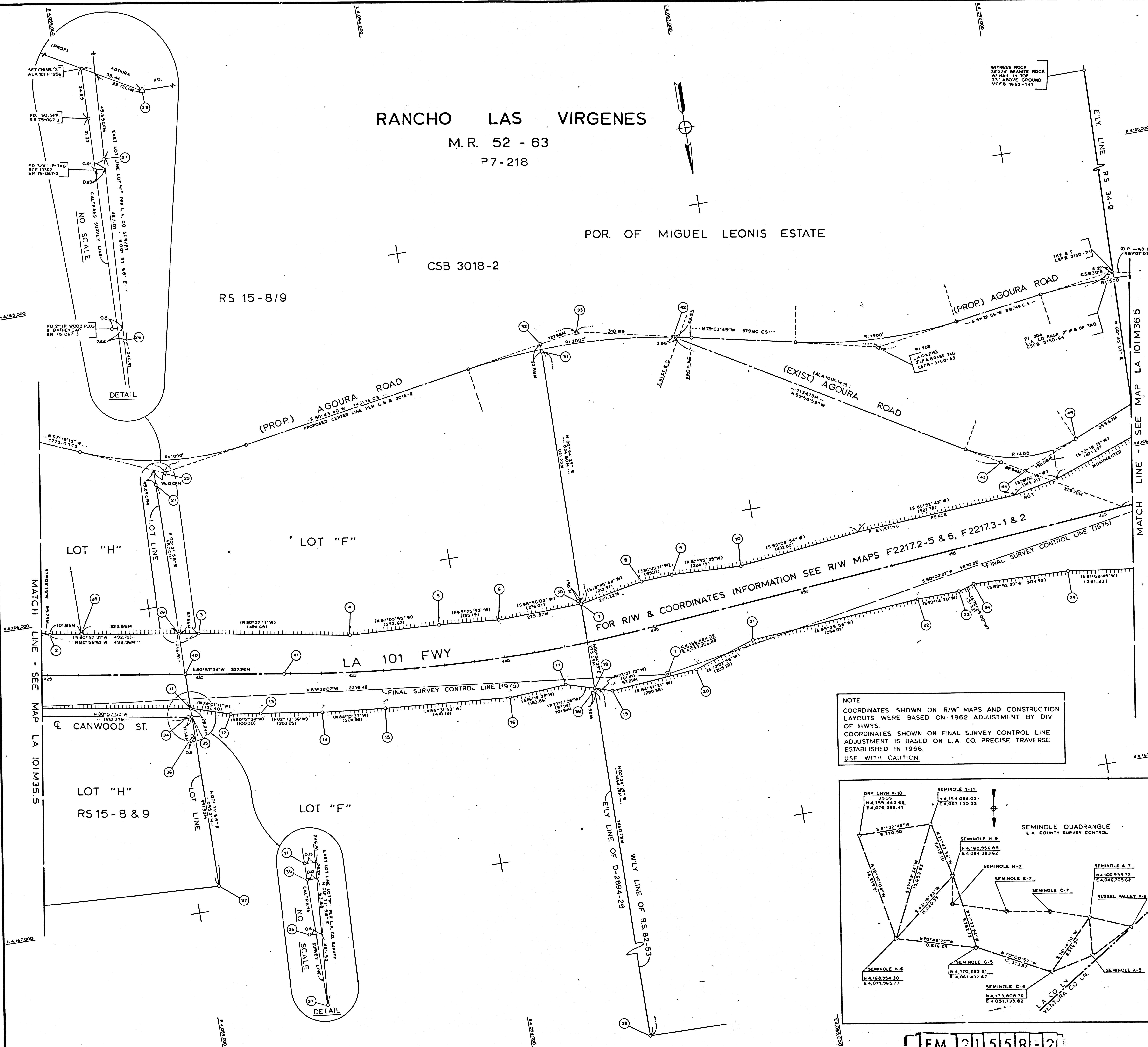
M.R. 52 - 63

P7-218

POR. OF MIGUEL LEONIS ESTATE

CSB 3018-2

RS 15-8/9



NO	NAME	DESCRIPTION	REFERENCE	REMARKS
1	LA101M35.8	SET BR CAP MON	SR73-416-2	
2		SET 1" IP WITH PLASTIC CAP	SR74-159-6	
3		"	"	
4		"	SR74-159-7	
5		"	"	
6		"	"	
7		"	SR75-120-2	
8		"	SR 74-159-8	
9		"	"	
10		"	"	
11		"	SR74-159-2	
12		"	"	
13		"	"	
14		"	"	
15		"	"	
16		"	SR74-159-3	
17		FD 1" IP W WOOD PLUG	"	
18		SET 1" IP W PLASTIC CAP	SR 75-120-2	
19		FD 1" IP W WOOD PLUG	"	
20		SET 1" IP W PLASTIC CAP	SR 74-159-4	
21		"	SR74-159-5	
22		"	"	
23		"	"	
24		"	"	
25		FD 2" IP CONC PLUG	SR 75-067-3	
26		L.A. CO. ENGR TAG	L.A.CO.FR.3929-82	
27		"	SR 75-067-3	
28		"	L.A.CO.FR.3929-75	
29		"	L.A.CO.FR.3929-84	
30		FD CE TAG IN LEAD	"	PI 201
31		2" IP WOOD PLUG & BATHEY CAP	ALA 101F-259	
32		"	SR 74-159-9	
33		"	SR74-095-5	
34		SET C NAIL & BATHEY CAP	ALA101F-257	
35		FD CE TAG IN LEAD	"	PI 202
36		SET S T & W	SR73-327-3	
37		SET 2x2 & T	"	
38		FD 2" IP WOOD PLUG & BATHEY CAP	"	
39		N.W. COR LOT "H"	"	
40		FD 2x2 1 1/2" OFF LINE	ALA 101F-259	
41		"	SR 74-159-5	
42		FD 3" IP WITH 2 1/2" BR DISK STAMPED LS1578	SR 74-159-9	SEE CCM 13.2
43		"	A13 001 63 65	
44		NOTHING SET	SR73-327-31	
45		SET 2x2 & T	ALA101F-255	
46		FD CE TAG IN LEAD	SR74-095-4	FD.PERC.SFB.290-103
47		FD 5/8" HD NAIL REPLACED WITH 5/8" SPR & BATHEY CAP	"	
48		FD 1 1/2" TOP BROKEN SET NH IN REMAINS	"	
49		FD SPR & W	"	

- ⊙ SURVEY CONTROL POINTS
- ⊠ MONUMENTS SET OR FOUND, ALSO B.C.'S AND E.C.'S
- ⊡ ANGLE POINTS
- ⊠ SECTION CORNERS; RANCHO CORNERS
- ⊡ GROUND DISTANCE MEASURED
- ⊡ VALUE ESTABLISHED BY DISTRICT OFFICE OF RIGHT OF WAY BRANCH
- ⊡ CALCULATED VALUE
- ⊡ RECORDED VALUE AS ESTABLISHED PREVIOUSLY

NOTE:  
 1. BEARINGS ARE BASED ON THE CALIFORNIA COORDINATE SYSTEM, DIVISION 6, SECTION 8007 OF THE 1953 PUBLIC RESOURCES CODE, & L.A. CO GEODETIC STATIONS - SEMINOLE A-3, C-4, G-5 & H-3  
 2. DEPARTMENT OF TRANSPORTATION SURVEY INFORMATION IS AVAILABLE FROM THE ENGINEERING SERVICES BRANCH, SURVEY SECTION, LOS ANGELES, CALIFORNIA  
 3. DEPARTMENT OF TRANSPORTATION RIGHT OF WAY INFORMATION IS AVAILABLE FROM THE OFFICE OF RIGHT OF WAY, LOS ANGELES, CALIFORNIA  
 4. STATIONING SHOWN ON THIS MAP IS FOR REFERENCE ONLY

IN LOS ANGELES COUNTY  
 BLK 1605

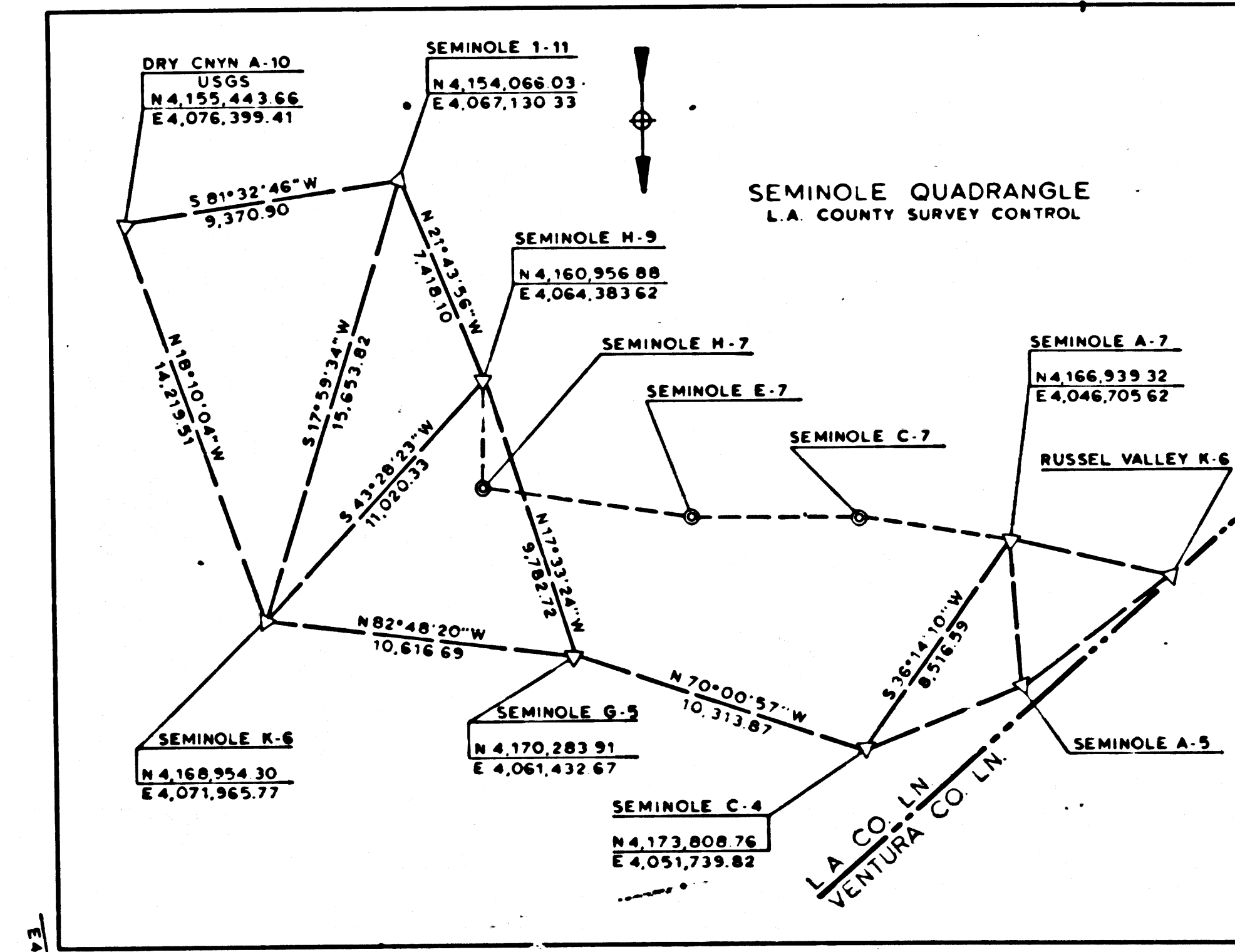
TO OBTAIN GROUND LEVEL DISTANCES, MULTIPLY GRID DISTANCES SHOWN BY 1.000043060...  
 GRID WAS ESTABLISHED FROM L.A. CO TRIANGULATION STATIONS: SEE TRIANGULATION DIAGRAM ON MAP

CONSTRUCTION CONTRACT NO. 07-100554  
 COMPLETION DATE: JULY 1974  
 SCALE: 1"=100'  
 100 0 6 4 2 0 100 200 300 400 500 FEET

LOS ANGELES COUNTY FILE NO.

STATE OF CALIFORNIA - DEPARTMENT OF TRANSPORTATION - SURVEY			
DISTRICT	COUNTY	ROUTE	POST MILES - TOTAL PROJECT
07	LA	101	34.4 - 38.2
SHEET NO.		SHEETS	
2		5	
Chief of Party		Office Supervisor	
P NELSON		D E EMBEL	
Calc & Computed by		Checked by	
P ENORI		C. B. WILSON	
Project Engineer		Drawn by	
P. ENORI		P. ENORI	
DATE		DATE	
7-31-75		1975	
CALIFORNIA COORDINATE SYSTEM - ZONE 7			

NOTE  
 COORDINATES SHOWN ON R/W MAPS AND CONSTRUCTION LAYOUTS WERE BASED ON 1962 ADJUSTMENT BY DIV. OF HWYS.  
 COORDINATES SHOWN ON FINAL SURVEY CONTROL LINE ADJUSTMENT IS BASED ON L.A. CO. PRECISE TRAVERSE ESTABLISHED IN 1968.  
 USE WITH CAUTION



F.M. 21558-2

F.M. 21558-2



RANCHO LAS VIRGENES

MR 52-63  
P7-218, 219  
LOT "E"

CSB 3018-2

AGOURA ROAD

LA 101 FWY

CANWOOD ST.

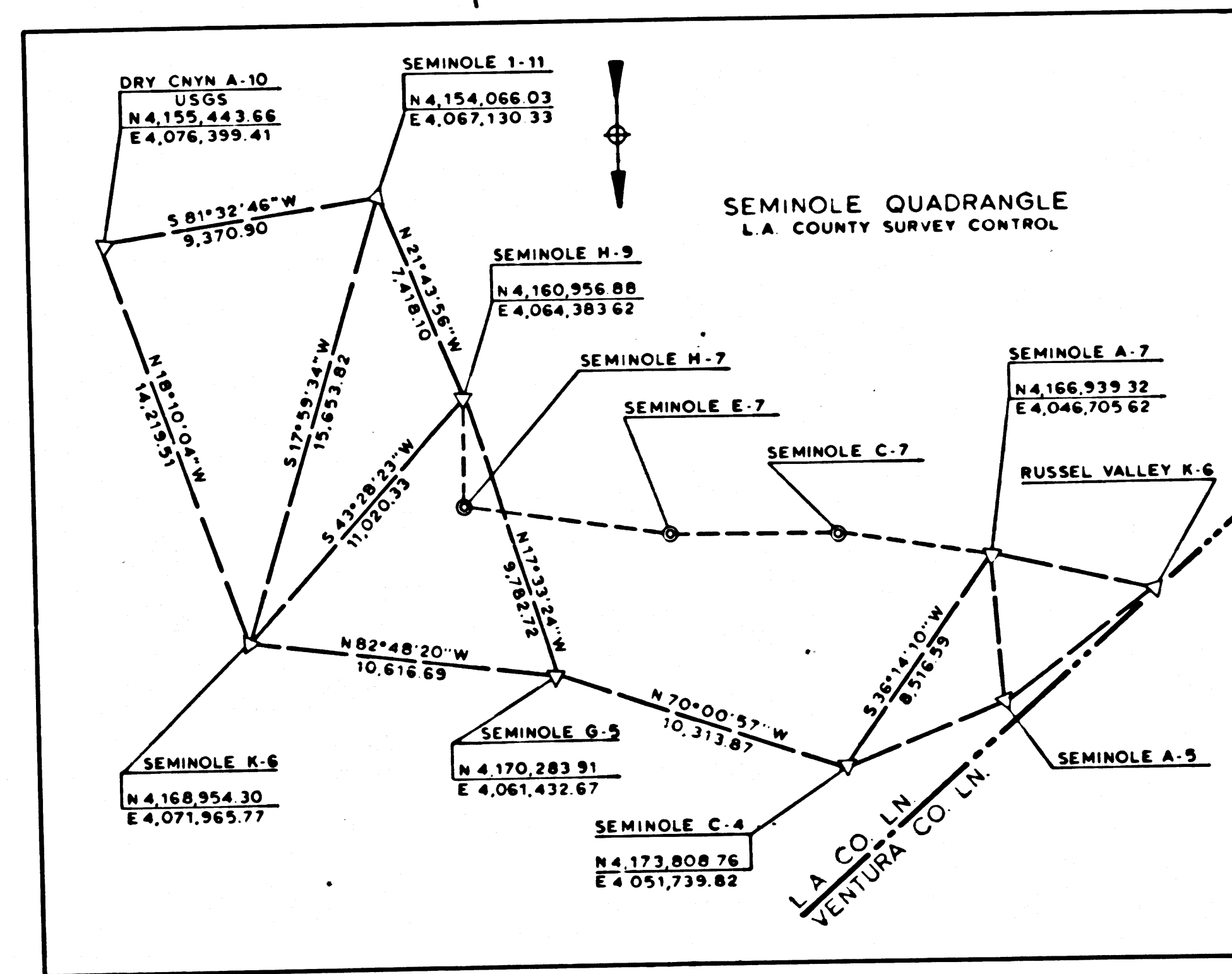
TRACT NO. 27815  
MB 789-34/35

RS 82-53

TRACT NO. 23807

TRACT NO. 24374  
M.B. 754-71-77

NOTE:  
COORDINATES SHOWN ON R/W MAPS AND CONSTRUCTION LAYOUTS WERE BASED ON 1962 ADJUSTMENT BY DIV. OF HWYS.  
COORDINATES SHOWN ON FINAL SURVEY CONTROL LINE ADJUSTMENT IS BASED ON L.A. CO. PRECISE TRAVERSE ESTABLISHED IN 1968.  
USE WITH CAUTION.



NO	NAME	DESCRIPTION	REFERENCE	REMARKS
1	LANDMARK	RESET L & T	SR73-416-3, 35	
2	LANDMARK	SET BR CAP MON	SR73-416-4	
3		SET 3/4" IP WITH CAP	SR74-159-11	
4		"	"	
5		"	"	
6		"	"	
7		"	SR74-159-12	
8		SET 8" SPK	"	
9		"	"	
10		SET 3/4" IP WITH CAP	"	
11		SET 1" IP WITH PLASTIC CAP	SR74-159-5	
12		FD BT SPK	"	
13		"	"	
14		FD 2 1/2 HUB & NAIL	ALA101F-262	
15		FD BT SPK & W	ALA101F-262, 264	
16		SET SO SPK & BATHY CAP	ALA101F-264	
17		FD SPK & W	"	
18		"	"	
19		FD BT SPK & W	SR73-327-5	
20		SET C NAIL	"	
21		"	"	
22		SET SPK & BATHY CAP	"	
23		"	"	
24		FD ROUND HD SPK T & W	SR73-327-6	
25		SET C NAIL	"	
26		SET SPK & BATHY CAP	SR73-327-7	
27		"	"	
28		"	SR73-327-8	
29		"	"	
30		SET C NAIL	SR74-159-5	
31		FD BT SPK & W	SR74-159-5	
32		FD RED HEAD NAIL	SR73-327-25	
33		FD BT SPK & W	SR73-327-25	
34		SET SO SPK & BATHY CAP	"	
35		"	"	
36		"	SR73-327-26	
37		SET 1" IP & BATHY CAP	"	PI 205
38		SET SO SPK & BATHY CAP	"	
39		"	SR73-327-27	PI 206
40		SET 1" IP & BATHY CAP	"	
41		SET SO SPK & BATHY CAP	SR73-327-28	
42		SET BT SPK	ALA101F-15	
43		FD BT SPK & W	SR74-095-4	
44		"	"	
45		"	"	
46		FD BT SPK & W	ALA101F-262 CSB 3018-2	

- L O — MONUMENTS SET OR FOUND, ALSO B.C.'S AND E.C.'S
- △ — ANGLE POINTS
- ◇ — SECTION CORNERS; RANCHO CORNERS
- E M — GROUND DISTANCE MEASURED
- N ( ) — VALUED ESTABLISHED BY DISTRICT OF RIGHT OF WAY BRANCH
- D C — CALCULATED VALUE
- R — RECORDED VALUE AS ESTABLISHED PREVIOUSLY
- \* — FENCE IS ONE FOOT PLUS OR MINUS INSIDE OF RIGHT OF WAY BOUNDARY
- ⊙ — SURVEY CONTROL POINTS

NOTE:  
1. BEARINGS ARE BASED ON THE CALIFORNIA COORDINATE SYSTEM, DIVISION 8, SECTION 8007 OF THE 1953 PUBLIC RESOURCES CODE, & L.A. CO. GEODETIC STATIONS - SEMINOLE A-9, C-4, G-5, & H-9.  
2. DEPARTMENT OF TRANSPORTATION SURVEY INFORMATION IS AVAILABLE FROM THE ENGINEERING SERVICES BRANCH, SURVEY SECTION, LOS ANGELES, CALIFORNIA.  
3. DEPARTMENT OF TRANSPORTATION RIGHT OF WAY INFORMATION IS AVAILABLE FROM THE OFFICE OF RIGHT OF WAY, LOS ANGELES, CALIFORNIA.  
4. STATIONING SHOWN ON THIS MAP IS FOR REFERENCE ONLY.

IN LOS ANGELES COUNTY

BLK 1605

TO OBTAIN GROUND LEVEL DISTANCES, MULTIPLY GRID DISTANCES SHOWN BY 1.000054350...  
GRID WAS ESTABLISHED FROM L.A. CO TRIANGULATION STATIONS - SEE TRIANGULATION DIAGRAM ON MAP.

CONSTRUCTION CONTRACT NO. 07-100554  
COMPLETION DATE: JULY 1974

SCALE: 1"=100'  
100 200 300 400 500 FEET

LOS ANGELES COUNTY FILE NO.

DISTRICT	COUNTY	ROUTE	POST MILES - TOTAL PROJECT	SHEET NO.	TOTAL SHEETS	Checked by	Office Supervisor
07	LA	101	34.4 - 30.2	3	5	P. NELSON	D. E. EBERLY

MONUMENTATION MAP  
MAP NO. LA 101M36.5

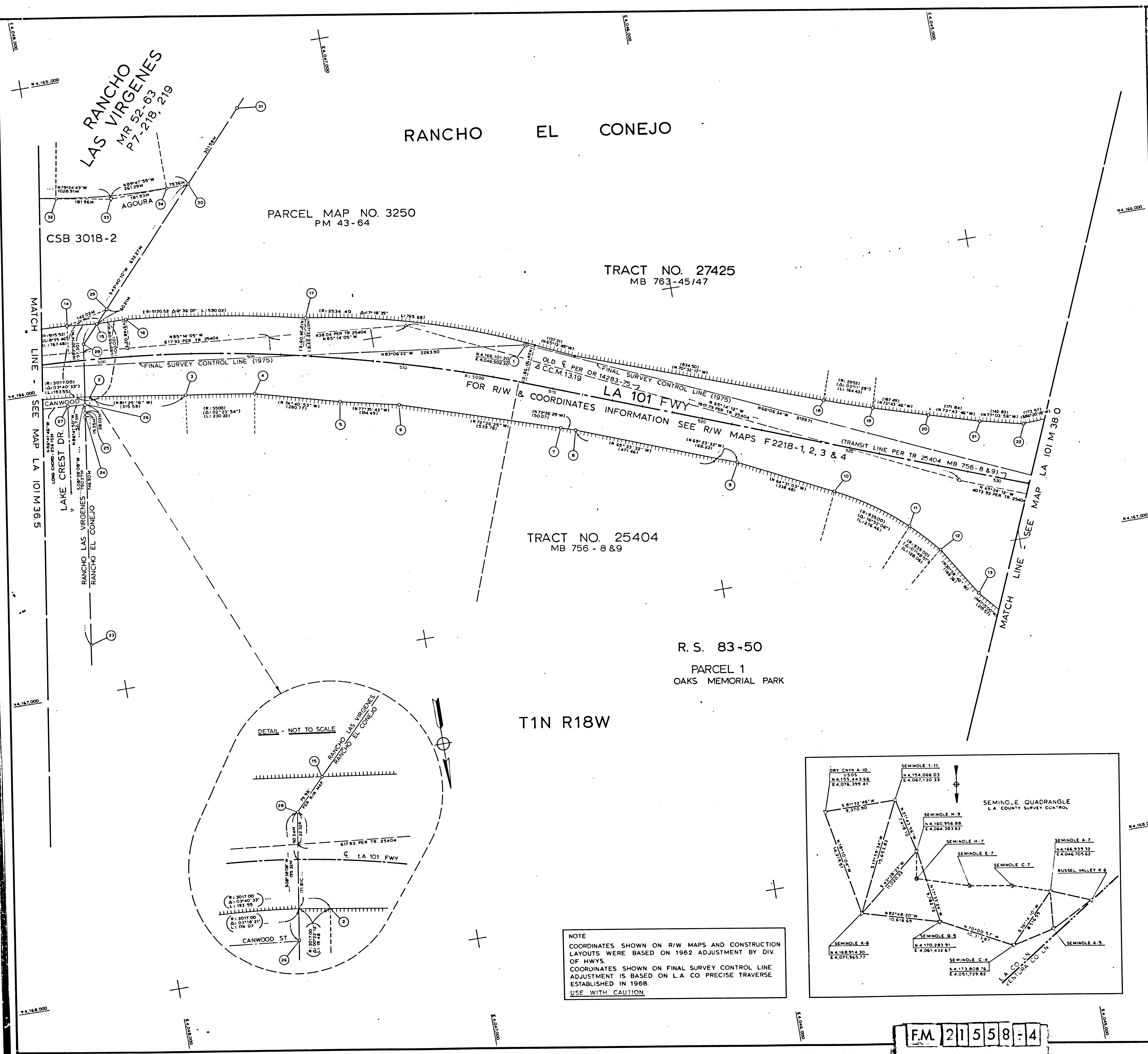
CALIFORNIA COORDINATE SYSTEM - ZONE 7

F.M. 21558-3

F.M. 21558-3



LA 101 M 36.5  
MONUMENTATION MAP



NO	NAME	DESCRIPTION	REFERENCE	REMARKS
1	LA101M37.1	SET BR CAP MON	SR73-416-4	
2		FD 2" & T	SR73-327-42	
3		FD 1" IP WITH PLASTIC CAP	SR74-159-33	
4		SET 1" IP WITH PLASTIC CAP	SR74-159-15	
5		"	"	
6		"	"	
7		"	"	
8		"	SR74-159-16	
9		"	"	
10		"	SR74-159-17	
11		"	"	
12		"	"	
13		"	"	
14		SET 3/4" IP WITH CAP	SR74-159-13	
15		"	"	
16		SET 8" SPK	"	
17		SET 3/4" IP WITH CAP	SR74-159-14	
18		SET 1" IP WITH PLASTIC CAP	SR74-159-17	
19		"	"	
20		"	"	
21		"	"	
22		"	"	
23		FD 2" IP WITH PLUG NAIL & TAG L52602	SR73-327-9	
24		FD RH	"	
25		FD 2" IP WITH PLUG NAIL & TAG L52602	SR73-327-9 & 42	
26		SET 1" IP WITH PLASTIC CAP	SR74-159-33	
27		SET SPK & BATHEY CAP	SR73-327-9	
28	C-7	SET CHIS X - RANCHO CORNER	SR73-327-41	
29		FD 2" IP WITH PLUG & TAG RCE 7211	SR74-159-13	
30		SET 50 SPK & BATHEY CAP	SR73-327-29	
31		FD 3/4" IP WITH L52718	"	
32		SET 50 SPK & BATHEY CAP	SR73-327-28	
33		"	"	
34		"	SR73-327-29	

**LEGEND**

- ⊙ — SURVEY CONTROL POINTS
- — MONUMENTS SET OR FOUND, ALSO BC'S AND EC'S
- △ — ANGLE POINTS
- ◇ — SECTION CORNERS; RANCHO CORNERS
- M — GROUND DISTANCE MEASURED
- I — VALUE ESTABLISHED BY DISTRICT OFFICE OF RIGHT OF WAY BRANCH
- C — CALCULATED VALUE
- R — RECORDED VALUE AS ESTABLISHED PREVIOUSLY

**NOTE**

1. BEARINGS ARE BASED ON THE CALIFORNIA COORDINATE SYSTEM DIVISION 8, SECTION 8607 OF THE 1953 PUBLIC RESOURCES CODE, & L.A. CO. GEODETIC STATIONS - SEMINOLE A-5, C-4, G-5 & H-5.
2. DEPARTMENT OF TRANSPORTATION SURVEY INFORMATION IS AVAILABLE FROM THE ENGINEERING SERVICES BRANCH, SURVEY SECTION, LOS ANGELES, CALIFORNIA.
3. DEPARTMENT OF TRANSPORTATION RIGHT OF WAY INFORMATION IS AVAILABLE FROM THE OFFICE OF RIGHT OF WAY, LOS ANGELES, CALIFORNIA.
4. STATIONING SHOWN ON THIS MAP IS FOR REFERENCE ONLY.

**IN LOS ANGELES COUNTY**  
BLK 1604

TO OBTAIN GROUND LEVEL DISTANCES, MULTIPLY GRID DISTANCES SHOWN BY 1.000054350

GRID WAS ESTABLISHED FROM L.A. CO TRIANGULATION STATIONS - SEE TRIANGULATION DIAGRAM ON MAP

CONSTRUCTION CONTRACT NO. 07-100554  
COMPLETION DATE: JULY 1974

SCALE: 1"=100'  
100 200 300 400 500 FEET

**LOS ANGELES COUNTY FILE NO.**

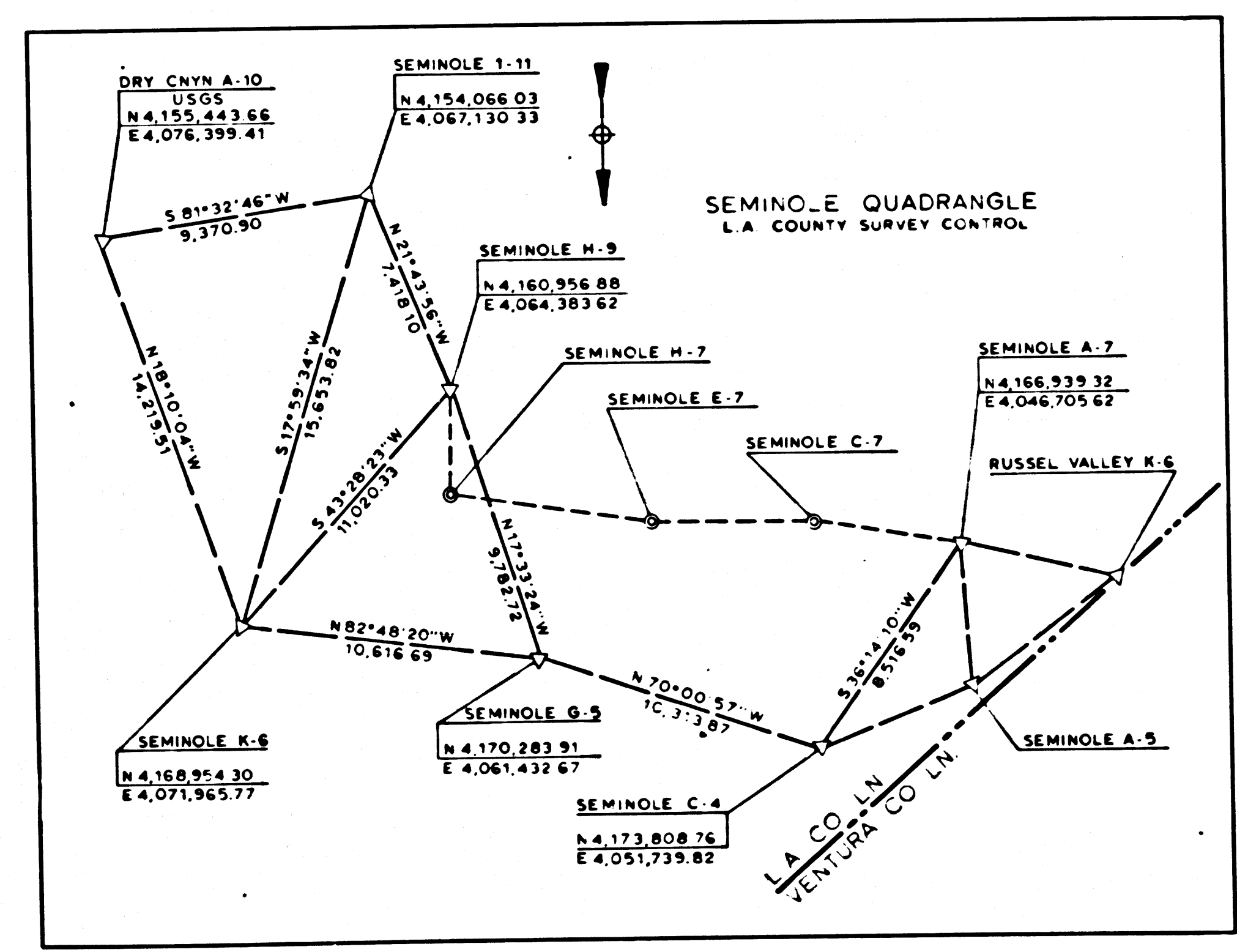
STATE OF CALIFORNIA - DEPARTMENT OF TRANSPORTATION - SURVEYS				
DISTRICT	COUNTY	ROUTE	POST MILES-TOTAL PROJECT	PROJECT NO.
07	LA	101	344 - 382	4 5

Checked by	Checked by
R. ENOKI	C. SHRUM

Project Engineer: J. F. KOWAL  
Checked by: R. ENOKI  
Date: 7-31-74

CALIFORNIA COORDINATE SYSTEM - ZONE 7

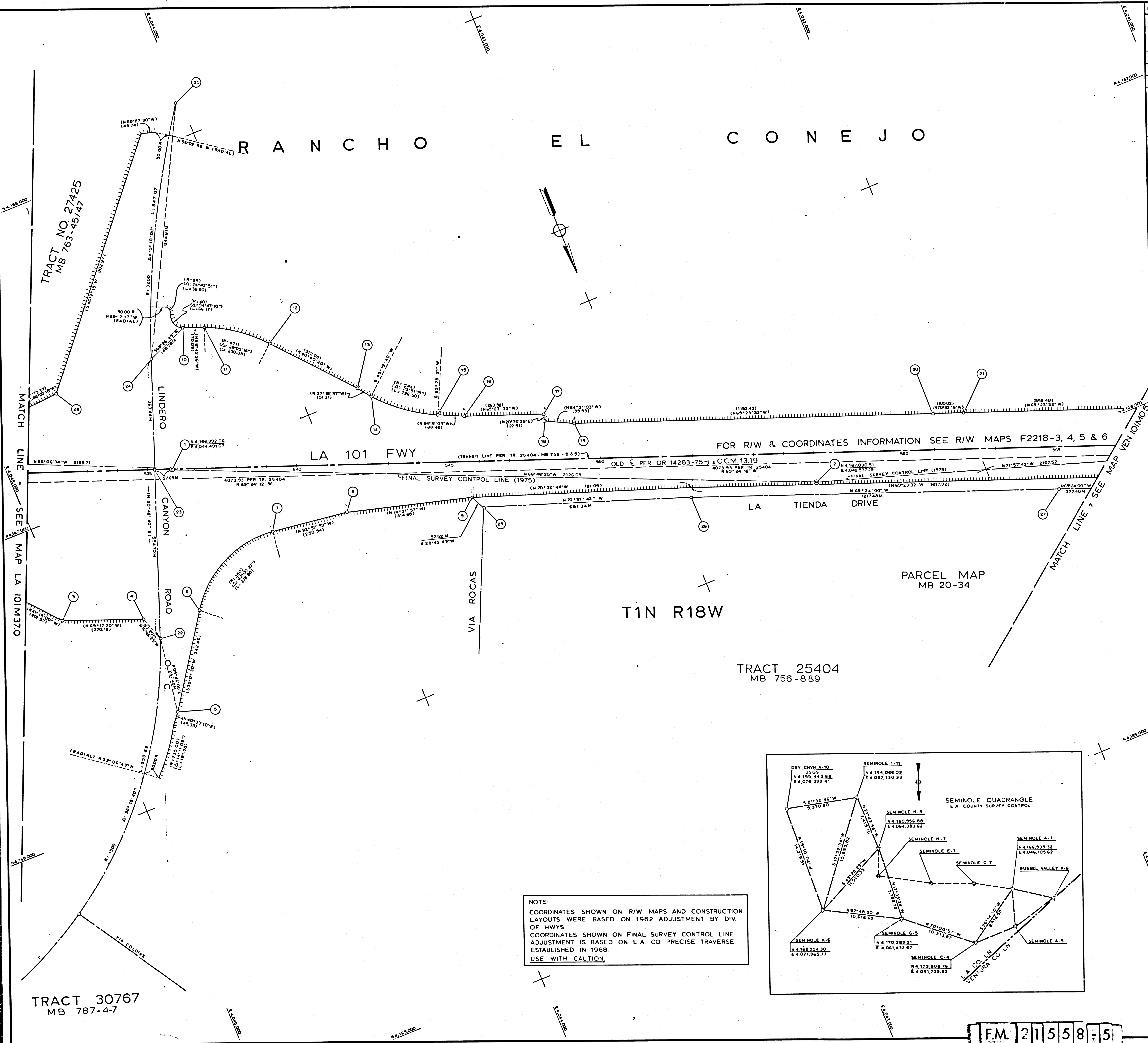
**NOTE**  
COORDINATES SHOWN ON R/W MAPS AND CONSTRUCTION LAYOUTS WERE BASED ON 1962 ADJUSTMENT BY DIV OF HWYS.  
COORDINATES SHOWN ON FINAL SURVEY CONTROL LINE ADJUSTMENT IS BASED ON L.A. CO. PRECISE TRAVERSE ESTABLISHED IN 1968.  
**USE WITH CAUTION**



**FM 21558-4**

FN 21558-4





NO	NAME	DESCRIPTION	REFERENCE	REMARKS
1	LA101M375	SET L & T	SR73-416-5	
2	LA101M375	SET BR CAP MON	"	
3		SET 1" IP WITH PLASTIC CAP	SR74-159-18	
4		SET CHIS X IN CONC	"	
5		SET 3/4" IP WITH PLASTIC CAP	"	
6		"	"	
7		"	"	
8		"	SR74-159-19	
9		SET 1" IP WITH PLASTIC CAP	SR74-159-19	
10		SET 3/4" IP WITH PLASTIC CAP	SR74-159-20	
11		"	"	
12		"	"	
13		"	"	
14		"	"	
15		"	"	
16		"	"	
17		SET 1" IP WITH PLASTIC CAP	SR74-159-21	
18		SET CHIS X	"	
19		"	"	
20		SET 1" IP WITH PLASTIC CAP	"	
21		"	"	
22		SET B S T & W	SR73-327-14	EC R-1500 (82-3447)
23		SET L & T WITH TAG	"	
24		SET BT SPK & W	"	BC R-3200 (81-52-93)
25		FD SPK & W	SR73-327-15	
26		FD SPK & T	SR73-327-20	
27		FD NL & T	"	
28		SET 1" IP W/ PLASTIC CAP	SR 74-159-17	
29		FD SPK & TIN	ALA 101F-152	

**LEGEND**

⊙ — SURVEY CONTROL POINTS

○ — MONUMENTS SET OR FOUND, ALSO B C'S AND E C'S

△ — ANGLE POINTS

◇ — SECTION CORNERS; RANCHO CORNERS

M — GROUND DISTANCE MEASURED

( ) — VALUE ESTABLISHED BY DISTRICT OF RIGHT OF WAY BRANCH

C — CALCULATED VALUE

R — RECORDED VALUE AS ESTABLISHED PREVIOUSLY

**NOTE**

- BEARINGS ARE BASED ON THE CALIFORNIA COORDINATE SYSTEM, DIVISION B, SECTION 8007 OF THE 1953 PUBLIC RESOURCES CODE, & LA CO. GEODETIC STATIONS - SEMINOLE A-5, C-4, G-5, & H-9.
- DEPARTMENT OF TRANSPORTATION SURVEY INFORMATION IS AVAILABLE FROM THE ENGINEERING SERVICES BRANCH, SURVEY SECTION, LOS ANGELES, CALIFORNIA.
- DEPARTMENT OF TRANSPORTATION RIGHT OF WAY INFORMATION IS AVAILABLE FROM THE OFFICE OF RIGHT OF WAY, LOS ANGELES, CALIFORNIA.
- STATIONING SHOWN ON THIS MAP IS FOR REFERENCE ONLY.

IN LOS ANGELES COUNTY  
BLK 1604

TO OBTAIN GROUND LEVEL DISTANCES, MULTIPLY GRID DISTANCES SHOWN BY 1.000054350

GRID WAS ESTABLISHED FROM LA CO TRIANGULATION STATIONS - SEE TRIANGULATION DIAGRAM ON MAP

CONSTRUCTION CONTRACT NO. 07-100554  
COMPLETION DATE: JULY 1974  
SCALE: 1"=100'  
100 0 100 200 300 400 500 FEET

**LOS ANGELES COUNTY FILE NO.**

STATE OF CALIFORNIA DEPARTMENT OF TRANSPORTATION SURVEYS

DISTRICT	COUNTY	ROUTE	POST MILES	TOTAL PROJECT	PROJECT NO.	SHEET NO.	TOTAL SHEETS	Checked by	Office Supervisor
07	LA	101	34.4 - 38.2	5	5			F. ENOKI	C. SHRUM

**MONUMENTATION MAP**

MAP NO. LA 101M38 O

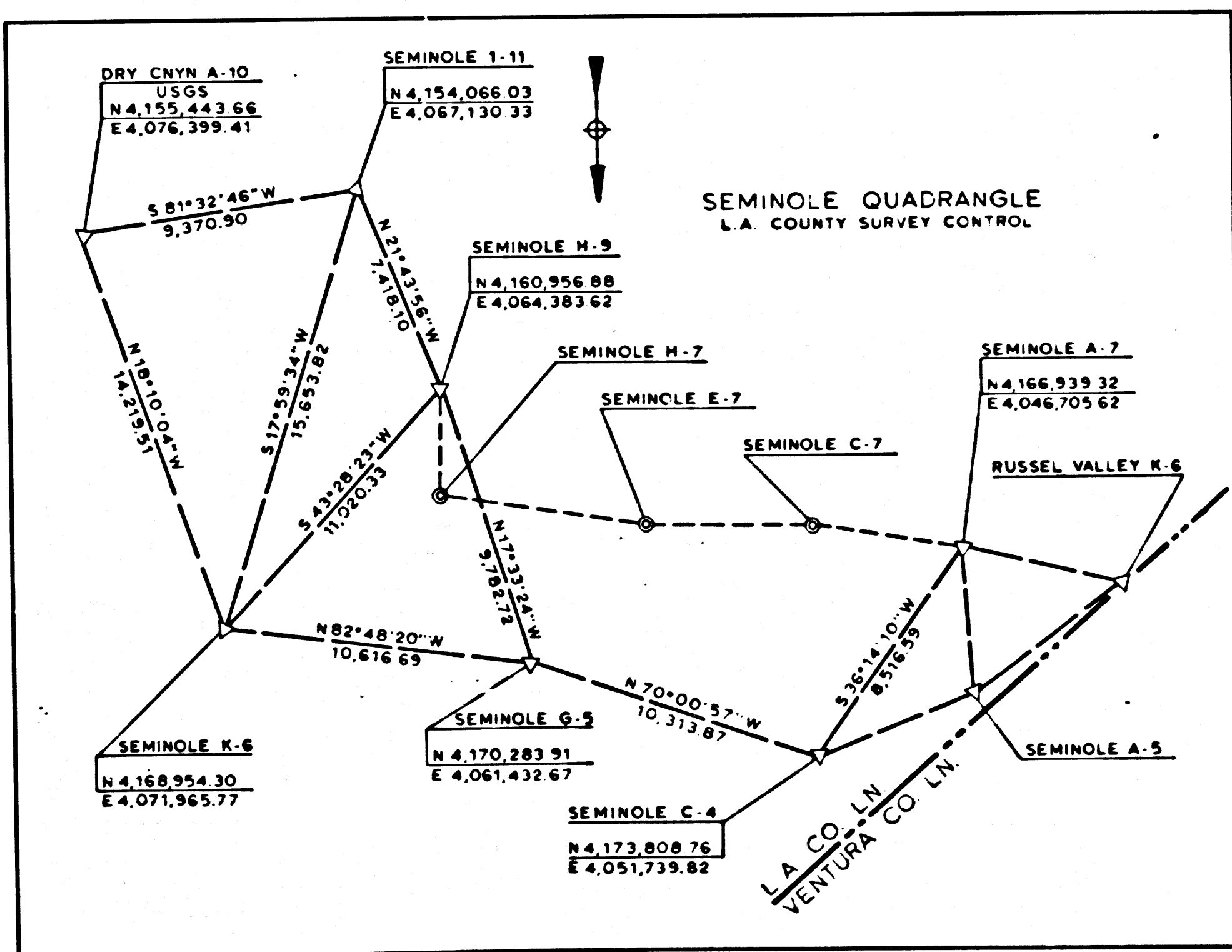
CALIFORNIA COORDINATE SYSTEM-ZONE 7  
DATE: 7-31-75

**NOTE**

COORDINATES SHOWN ON R/W MAPS AND CONSTRUCTION LAYOUTS WERE BASED ON 1962 ADJUSTMENT BY DIV. OF HWYS.

COORDINATES SHOWN ON FINAL SURVEY CONTROL LINE ADJUSTMENT IS BASED ON L.A. CO. PRECISE TRAVERSE ESTABLISHED IN 1968.

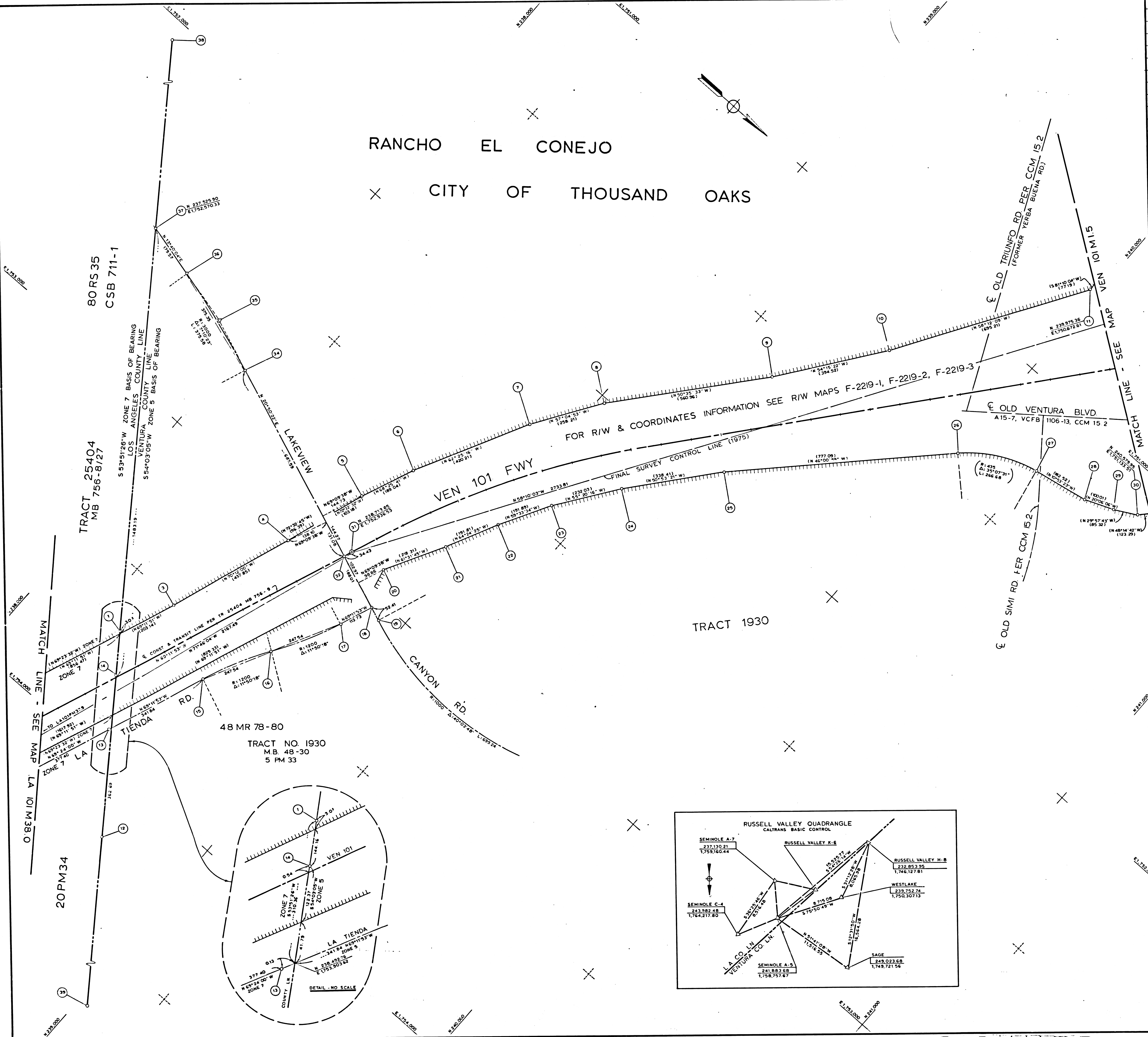
USE WITH CAUTION



**FM 21558-5**

FN 21558-5





NO	NAME	DESCRIPTION	REFERENCE	REMARKS
1		SET 2" IP & BR CAP	SR 73-327-22	
2				
3		SET 1" IP W/ PLASTIC CAP	SR 74-159-23	
4				
5				
6		FD 1" IP, WOOD PLUG, & NAIL		
7				
8			SR 74-159-25	
9				
10				
11		SET CHIS "K" IN PCC		
12		FD 2" IP & L.S. TAG 2602	SR 73-327-22	
13		FD SPK & W	SR 73-327-20	
14		FD LA CO. BR. CAP	ALA 101F-279 SR 72-159-28	
15		SET BT SPK T & W	SR 73-327-22	
16			SR 73-327-21	
17				
18			SR 73-327-17	
19				
20		SET 1" IP W/ PLASTIC CAP	SR 74-159-24	
21				
22				
23				
24				
25			SR 74-159-25	
26				
27				
28				
29			SR 74-159-26	
30				
31	VEN 101 PMO 2	SET L & T ON SIDEWALK OF BRIDGE & ON FWY	SR 73-416-6	CONTROL CIL OF FWY
32		SET L & T & TAG	SR 73-327-17	
33				
34		SET L & T IN TC	SR 73-327-18	
35				
36		FD CONC. NAIL & W		
37		RESET BT SPK T & W		
38		FD CONC. NAIL		
39		FD LA CO. BRASS CAP MON	SR 73-327-22	

**LEGEND**

(S) SURVEY CONTROL POINTS  
 (O) MONUMENTS SET OR FOUND, ALSO B.C.'S AND E.C.'S  
 (A) ANGLE POINTS  
 (D) SECTION CORNERS  
 ( ) VALUE ESTABLISHED BY DISTRICT OF RIGHT OF WAY BRANCH CONVERTED TO ZONE 5

**NOTE:**

- BEARINGS ARE BASED ON THE CALIFORNIA COORDINATE SYSTEM, DIVISION 0, SECTION 8807 OF THE 1953 PUBLIC RESOURCES CODE.
- DEPARTMENT OF TRANSPORTATION SURVEY INFORMATION IS AVAILABLE FROM THE ENGINEERING SERVICES BRANCH, SURVEY SECTION, LOS ANGELES, CALIFORNIA
- DEPARTMENT OF TRANSPORTATION RIGHT OF WAY INFORMATION IS AVAILABLE FROM THE OFFICE OF RIGHT OF WAY, LOS ANGELES, CALIFORNIA
- STATIONING SHOWN ON THIS MAP IS FOR REFERENCE ONLY

**IN VENTURA COUNTY**  
**BLK 2475**

TO OBTAIN GROUND LEVEL DISTANCES, MULTIPLY GRID DISTANCES SHOWN BY 1.000071658

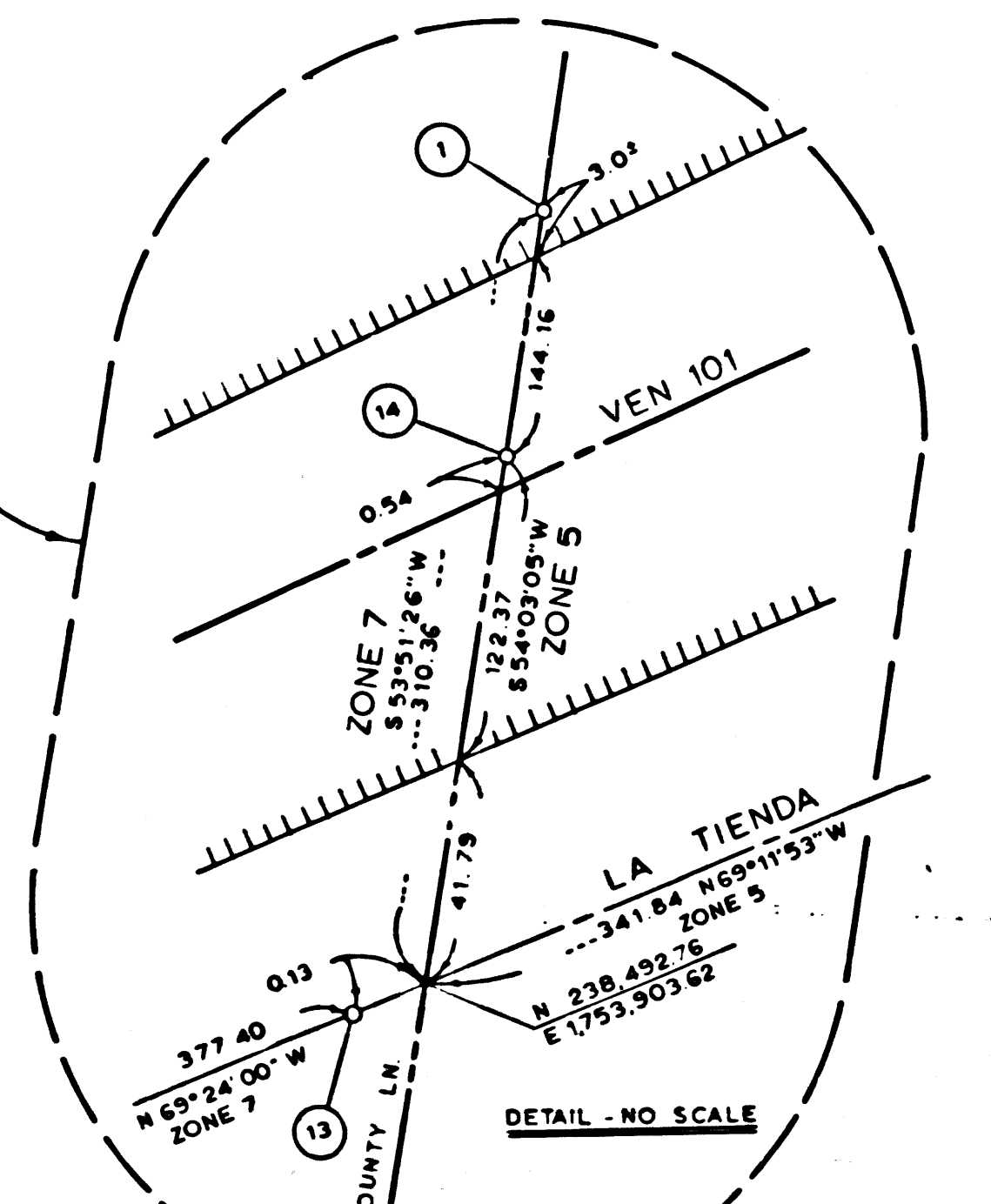
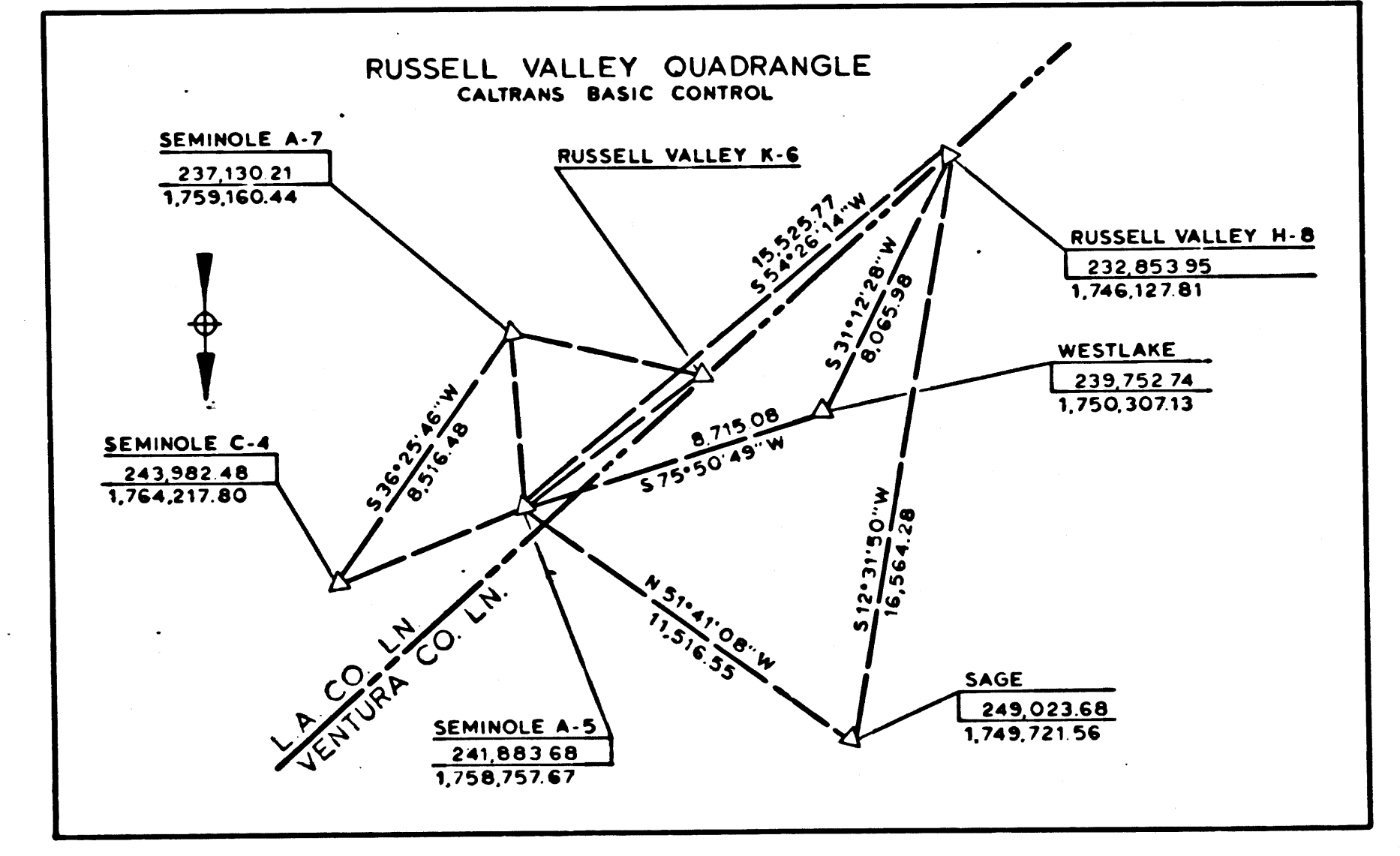
GRID WAS ESTABLISHED FROM N.G.S. TRIANGULATION STATIONS. SEE TRIANGULATION DIAGRAM ON MAP.

**CONSTRUCTION CONTRACT NO. 07-100554**  
**COMPLETION DATE: JULY 1974**

SCALE: 1" = 100'

100 200 300 400 500 FEET

STATE OF CALIFORNIA - DEPARTMENT OF TRANSPORTATION - SURVEYS									
DISTRICT	COUNTY	ROUTE	POST MILES - TOTAL PROJECT	PROJECT NO.	SHEET NO.	NO. OF SHEETS	DATE	SCALE	PROJECT NO.
07	VEN	101	0.0 - 1.4	1	2				
Care & Complied by:							Checked by:		
P. NELSON							D. E. EMBURY		
Project Engineer:							De-vised by:		
J. ENDRE							P. HOWAL		
SEC. ENGINEER:							SURVEYS:		
J. ENDRE							JAN 16, 1974		
CALIFORNIA COORDINATE SYSTEM - ZONE 5									
Prep. By:	Checked By:	Approved By:							



F.M. 21558-6

F.M. 21558-6