

NO.	DESCRIPTION	REFERENCE	TERRACE	COORDINATES
1	SET BR CAP IN 2" IP	FLA210F-37		
2	SET L & T IN BRIDGE DECK	FLA210F-36		
3	SET BT SPK, T & W	ALA210F-C21		
4	SET BR CAP IN 2" IP	FLA210F-35		
5	FD BR CAP IN 2" IP	FLA210F-35		
6	FD BR CAP IN 2" IP	FLA210F-34		
7	SET BT SPK, T & W	ALA210F-C22		
8	SET BT SPK, T & W	ALA210F-C21		
9	SET TYPE B MON IN WELL	ALA210F-C21		
10	SET TYPE B MON IN WELL	ALA210F-C21		
11	SET BR CAP IN 2" IP	ALA210F-E20		
12	FD 4" BR TABLET IN CONC	SLA210F-16		
13	FD LA CO BR CAP MON	SLA210F-07		
14	FD LA CO BR CAP MON	G397.001-12		
15	FD 2" IP & TAG	ALA210F-541		
16	FD 2" IP & T BAR	ALA210F-542		
17	FD 2" IP & T BAR	ALA210F-543		
18	FD 2" IP & T BAR	ALA210F-543		
19	FD SPK & W	ALA210F-543		
20	FD 2" IP & T BAR	ALA210F-543		

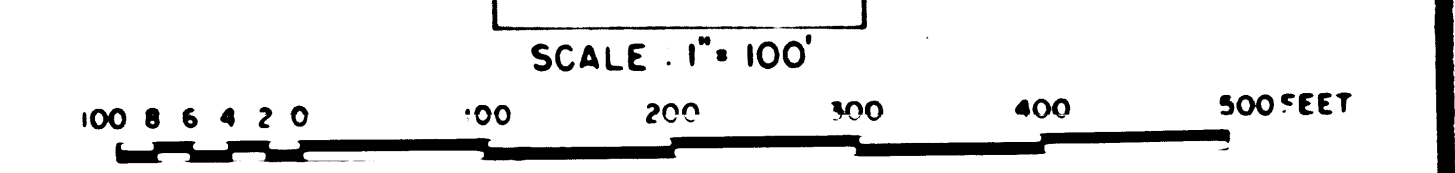
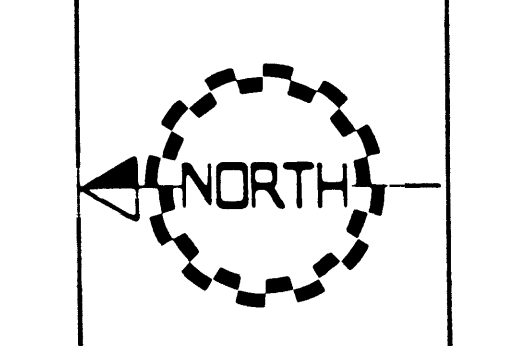
LEGEND

- ⊙ — LOS ANGELES COUNTY SURVEY CONTROL POINTS
- ▲ — PRIMARY CONTROL POINTS
- — MONUMENTS SET OR FOUND, ALSO B'S AND E'S
- △ — ANGLE POINTS
- ◇ — SECTION CORNERS
- M — GROUND DISTANCE MEASURED WITH CHAIN
- DM — GROUND DISTANCE MEASURED WITH DISTOMAT
- GM — GROUND DISTANCE MEASURED WITH GEODIMETER
- A — ADJUSTED GRID DISTANCE
- Rec. — RECORDED VALUE AS ESTABLISHED PREVIOUSLY
- () — DISTANCE AND BEARINGS PER L.A. CSB 3082

NOTE

- BEARINGS ARE BASED ON THE CALIFORNIA COORDINATE SYSTEM DIVISION 8, SECTION 8809 OF THE 1953 PUBLIC RESOURCES CODE AND ARE DERIVED FROM THE 1971 VALUE OF THE LOS ANGELES COUNTY SURVEY CONTROL POINTS AS SHOWN.
- DIVISION OF HIGHWAYS SURVEY INFORMATION IS AVAILABLE FROM THE ENGINEERING SERVICES DEPARTMENT, LOS ANGELES, CALIFORNIA.
- DIVISION OF HIGHWAYS RIGHT OF WAY INFORMATION IS AVAILABLE FROM THE RIGHT OF WAY DEPARTMENT, LOS ANGELES, CALIFORNIA.
- STATIONING SHOWN ON THIS MAP IS FOR REFERENCE ONLY.

IN LOS ANGELES COUNTY
 BLK 1434 MOD 52.72
 CONSTRUCTION CONTRACT NO. 01242 4
 COMPLETION DATE: JUNE 28, 1971



LOS ANGELES COUNTY FILE NO.

DISTRICT	COUNTY	ROUTE	POST MILES	TOTAL PROJECT	DATE	NO. SHEETS
07	LA	210	44.37	479	3	5

STATE OF CALIFORNIA DIVISION OF HIGHWAYS SURVEYS

MONUMENTATION MAP
 DATUM CALIFORNIA COORDINATE SYSTEM - ZONE 7
 MAP NO. LA 210M46.5

Prepared by: V. ARCHAMBALT
 Checked by: L. PRICE J. KRAS
 Project Engineer: J. KRAS
 Drawn by: L. PRICE
 Survey Office Supervisor: D. EBERLY

A. E. VAN BUREN
 C.E. 16906
 Date: 9/5/79

FM 21565-3

FM 21565-3

NO.	DESCRIPTION	REFERENCE	NORTHING	EASTING
1	SET BR CAP IN 2" IP	FLA210F-33		
2	SET BR CAP IN 2" IP	FLA210F-33		
3	SET BR CAP IN 2" IP	FLA210F-33		
4	SET BR CAP IN 2" IP	FLA210F-32		
5	SET BR CAP IN 2" IP	FLA210F-32		
6	SET BR CAP IN 2" IP	FLA210F-31		
7	SET BT SPK T & W	ALA210F-619		
8	SET BT SPK T & W	ALA210F-619		
9	SET BT SPK & W	ALA210F-619		
10	SET BT SPK & W	ALA210F-618		
11	FD 2x2 & T	ALA210F-615		
12	FD 2x2 & T	ALA210F-537		
13	FD 2x2 & T	ALA210F-540		
14	FD 2x2 & T	ALA210F-540		
15	SET 2" IP & BR TAG	LA CO CSB3082		
16	SET 2" IP & BR TAG	LA CO CSB3082		
17	SET 2" IP & BR TAG	LA CO CSB3082		
18	SET 2" IP & BR TAG	LA CO CSB3082		
19	SET 2" IP & BR TAG	LA CO CSB3082		
20	SET 2" IP & BR TAG	LA CO CSB3082		
21	SET 2" IP & BR TAG	LA CO CSB3082		
22	SET 2" IP & BR TAG	LA CO CSB3082		
23	SET 2" IP & BR TAG	LA CO CSB3082		
24	SET 2" IP & BR TAG	LA CO CSB3082		
25	SET 2" IP & BR TAG	LA CO CSB3082		
26	SET 2" IP & BR TAG	LA CO CSB3082		
27	SET 2" IP & BR TAG	LA CO CSB3082		
28	SET 2" IP & BR TAG	LA CO CSB3082		
29	SET 2" IP & BR TAG	LA CO CSB3082		
30	SET 2" IP & BR TAG	LA CO CSB3082		
31	SET 2" IP & BR TAG	LA CO CSB3082		

LEGEND

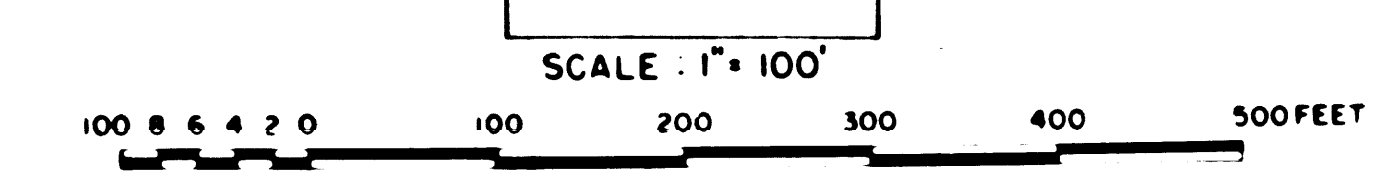
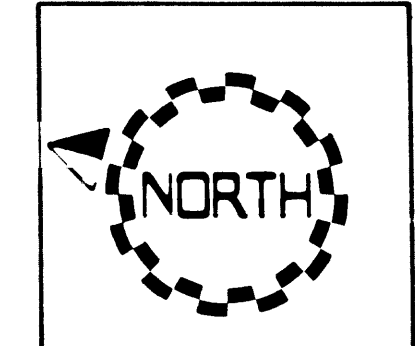
- ⊙ — LOS ANGELES COUNTY SURVEY CONTROL POINTS
- △ — PRIMARY CONTROL POINTS
- — MONUMENTS SET OR FOUND, ALSO BC'S AND EC'S
- ∠ — ANGLE POINTS
- ◇ — SECTION CORNERS
- M — GROUND DISTANCE MEASURED WITH CHAIN
- DM — GROUND DISTANCE MEASURED WITH DISTOMAT
- GM — GROUND DISTANCE MEASURED WITH GEODIMETER
- A — ADJUSTED GRID DISTANCE
- Rec. — RECORDED VALUE AS ESTABLISHED PREVIOUSLY
- () — DISTANCE AND BEARINGS PER L.A. CSB 3082

NOTE

- BEARINGS ARE BASED ON THE CALIFORNIA COORDINATE SYSTEM DIVISION 8, SECTION 8809 OF THE 1953 PUBLIC RESOURCES CODE, AND ARE DERIVED FROM THE 1971 VALUE OF THE LOS ANGELES COUNTY SURVEY CONTROL POINTS AS SHOWN.
- DIVISION OF HIGHWAYS SURVEY INFORMATION IS AVAILABLE FROM THE ENGINEERING SERVICES DEPARTMENT, LOS ANGELES, CALIFORNIA.
- DIVISION OF HIGHWAYS RIGHT OF WAY INFORMATION IS AVAILABLE FROM THE RIGHT OF WAY DEPARTMENT, LOS ANGELES, CALIFORNIA.
- STATIONING SHOWN ON THIS MAP IS FOR REFERENCE ONLY.

IN LOS ANGELES COUNTY
BLK 1434 MOD 2223324252

CONSTRUCTION CONTRACT NO. 012424
COMPLETION DATE: JUNE 28, 1971

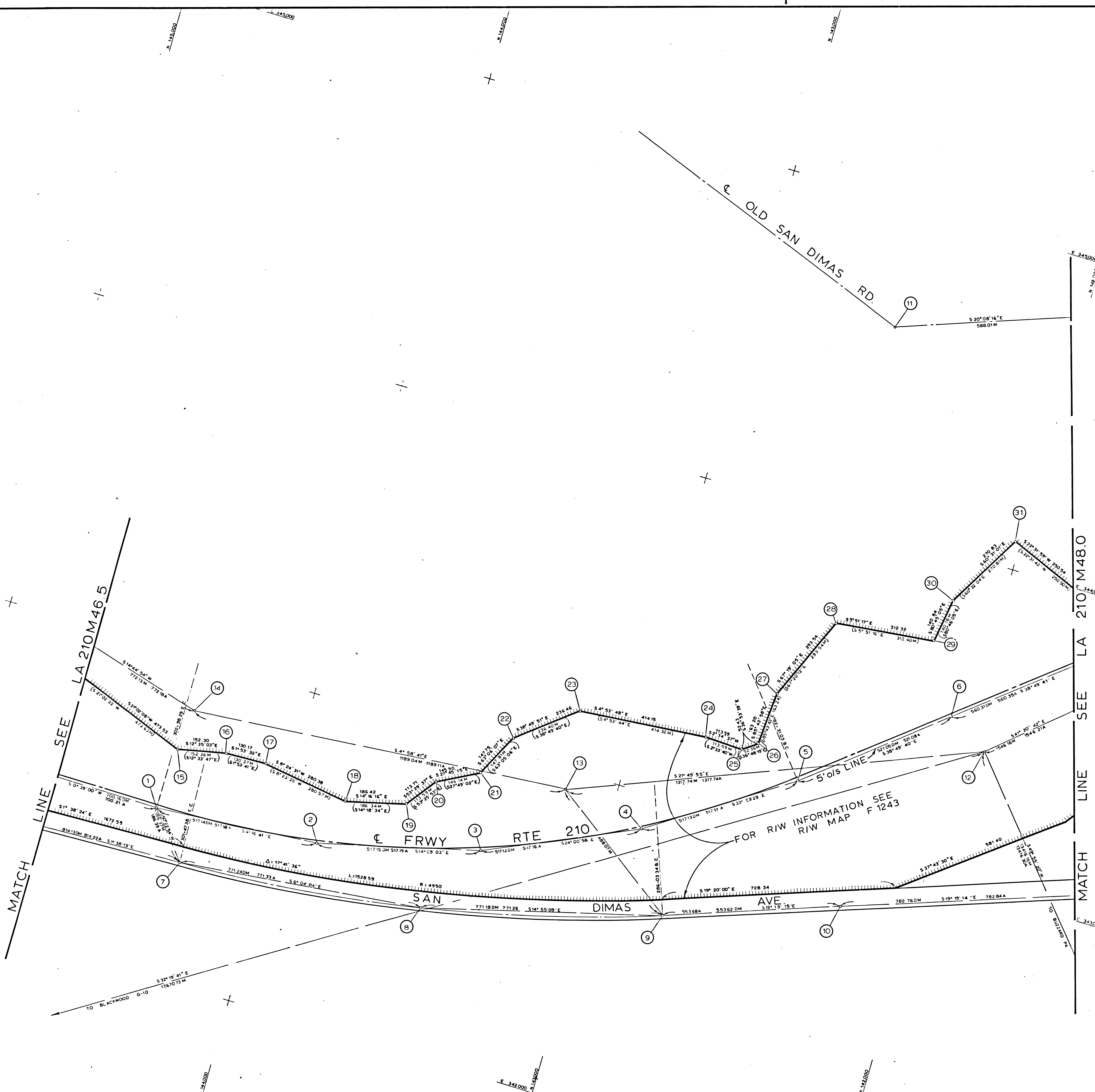


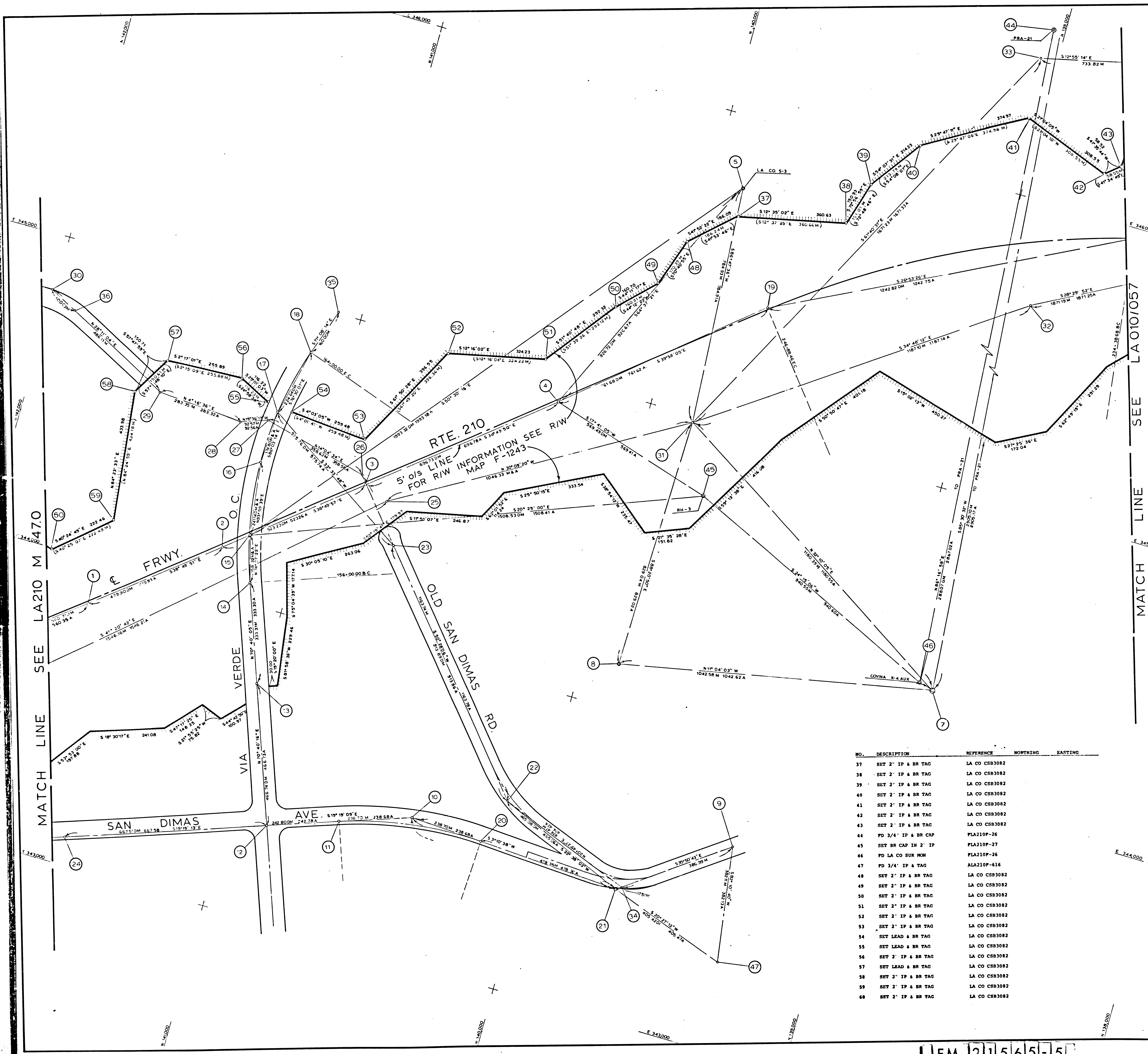
LOS ANGELES COUNTY FILE NO.

DISTRICT	COUNTY	ROUTE	POST MILES - TOTAL PROJECT	PROJECT NO.	SHEET NO.	DATE
07	LA	210	443.7475	4	5	
STATE OF CALIFORNIA DIVISION OF HIGHWAYS						
SURVEYS						
MONUMENTATION MAP						
DATUM CALIFORNIA COORDINATE SYSTEM - ZONE 7						
MAP NO. LA 210M470						
A. E. VAN DYKE 9/5/72						
L. E. 16906						
DATE						
DRAWN BY						
CHECKED BY						
APPROVED BY						
DATE						

F.M. 21565-4

FILE 21565-4





NO.	DESCRIPTION	REFERENCE	NORTHING	EASTING
1	SET BR CAP IN 2" IP	FLA210F-30		
2	SET BR CAP IN 2" IP	FLA210F-28		
3	SET BR CAP IN 2" IP	FLA210F-28		
4	SET BR CAP IN 2" IP	FLA210F-29		
5	SET 2" IP & SPK	ALA210F-537		
6	FD CS MON	LA210F-537		
7	FD CS MON	LACEFB262-44		
8	FD 1" IP & TAG	LACEFB2641-138		
9	SET 2x2 & T	ALA210F-614		
10	SET BT SPK T & M	ALA210F-617		
11	SET BT SPK T & M	ALA210F-617		
12	SET BT SPK T & M	ALA210F-617		
13	SET BT SPK T & M	ALA210F-617		
14	SET BT SPK T & M	ALA210F-610		
15	SET BR CAP IN BR DECK	ALA210F-610		
16	SET BT SPK T & M	ALA210F-615		
17	SET BT SPK T & M	ALA210F-615		
18	FD 2" IP & SPK	ALA210F-615		
19	SET BR CAP IN 2" IP	FLA210F-93		
20	SET BT SPK T & M	ALA210F-617		
21	SET BR CAP IN CONC	ALA210F-616		
22	FD 3/4" IP	ALA210F-616		
23	FD BT SPK T & M	ALA210F-614		
24	SET BT SPK T & M	ALA210F-618		
25	FD 2" IP & "T" BAR	ALA210F-537		
26	3/4" IP (DESTROYED)	ALA210F-519		
27	3/4" IP (DESTROYED)	ALA210F-519		
28	SPK T & M (DESTROYED)	ALA210F-519		
29	SPK T & M (DESTROYED)	ALA210F-615		
30	FD 3/4" IP & TAG	ALA210F-615		
31	SET 2x2 & T	ALA210F-537		
32	FD 2x2 & T	ALA210F-537		
33	FD 2" IP & DOH TAG	ALA210F-537		
34	FD 3/4" IP	ALA210F-616		
35	FD 2" IP & SPK	ALA210F-612		
36	SET SPK T & M	ALA210F-499		

NO.	DESCRIPTION	REFERENCE	NORTHING	EASTING
37	SET 2" IP & BR TAG	LA CO CSB3082		
38	SET 2" IP & BR TAG	LA CO CSB3082		
39	SET 2" IP & BR TAG	LA CO CSB3082		
40	SET 2" IP & BR TAG	LA CO CSB3082		
41	SET 2" IP & BR TAG	LA CO CSB3082		
42	SET 2" IP & BR TAG	LA CO CSB3082		
43	SET 2" IP & BR TAG	LA CO CSB3082		
44	FD 3/4" IP & BR CAP	FLA210F-26		
45	SET BR CAP IN 2" IP	FLA210F-27		
46	FD LA CO SUR MON	FLA210F-26		
47	FD 3/4" IP & TAG	ALA210F-616		
48	SET 2" IP & BR TAG	LA CO CSB3082		
49	SET 2" IP & BR TAG	LA CO CSB3082		
50	SET 2" IP & BR TAG	LA CO CSB3082		
51	SET 2" IP & BR TAG	LA CO CSB3082		
52	SET 2" IP & BR TAG	LA CO CSB3082		
53	SET 2" IP & BR TAG	LA CO CSB3082		
54	SET LEAD & BR TAG	LA CO CSB3082		
55	SET LEAD & BR TAG	LA CO CSB3082		
56	SET 2" IP & BR TAG	LA CO CSB3082		
57	SET LEAD & BR TAG	LA CO CSB3082		
58	SET 2" IP & BR TAG	LA CO CSB3082		
59	SET 2" IP & BR TAG	LA CO CSB3082		
60	SET 2" IP & BR TAG	LA CO CSB3082		

LEGEND

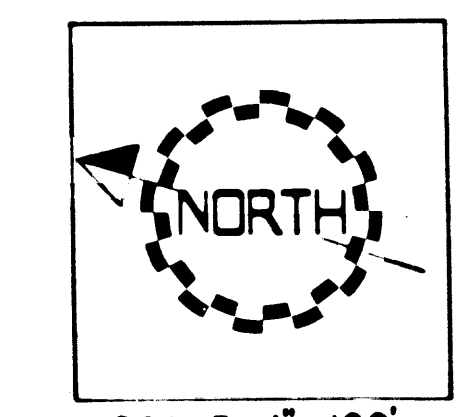
- ⊙ — LOS ANGELES COUNTY SURVEY CONTROL POINTS
- △ — PRIMARY CONTROL POINTS
- — MONUMENTS SET OR FOUND, ALSO B'S AND E'S
- ∠ — ANGLE POINTS
- ◇ — SECTION CORNERS
- M — GROUND DISTANCE MEASURED WITH CHAIN
- DM — GROUND DISTANCE MEASURED WITH DISTOMAT
- GM — GROUND DISTANCE MEASURED WITH GEODIMETER
- A — ADJUSTED GRID DISTANCE
- Rec — RECORDED VALUE AS ESTABLISHED PREVIOUSLY
- () — DISTANCE AND BEARINGS PER L.A. CSB 3082

NOTE

- BEARINGS ARE BASED ON THE CALIFORNIA COORDINATE SYSTEM DIVISION B, SECTION 8809 OF THE 1955 PUBLIC RESOURCES CODE AND ARE DERIVED FROM THE 1971 VALUE OF THE LOS ANGELES COUNTY SURVEY CONTROL POINTS AS SHOWN.
- DIVISION OF HIGHWAYS SURVEY INFORMATION IS AVAILABLE FROM THE ENGINEERING SERVICES DEPARTMENT, LOS ANGELES, CALIFORNIA.
- DIVISION OF HIGHWAYS RIGHT OF WAY INFORMATION IS AVAILABLE FROM THE RIGHT OF WAY DEPARTMENT, LOS ANGELES, CALIFORNIA.
- STATIONING SHOWN ON THIS MAP IS FOR REFERENCE ONLY.

IN LOS ANGELES COUNTY
 334
 BLK 1434 MOD 3451314

CONSTRUCTION CONTRACT NO. 012424
 COMPLETION DATE: JUNE 28, 1971



LOS ANGELES COUNTY FILE NO.

SHEET NO. 5	TOTAL SHEETS 5	DATE 5/75
STATE OF CALIFORNIA DIVISION OF HIGHWAYS SURVEYS MONUMENTATION MAP DATUM CALIFORNIA COORDINATE SYSTEM - ZONE 7 MAP NO. 012424		
PROJECT ENGINEER: J. KRASZEWSKI SURVEY OFFICE SUPERVISOR: D. EBERLY		DATE: 5/75

F.M. 21565-5