

NO.	DESCRIPTION	REFERENCE
1	FD 2 L 5 T TIES	FLA210F-96
2	SET 2' IP & BR CAP	FLA210F-96
3	SET 2' IP & BR CAP	FLA210F-96
4	SET 2' IP & BR CAP	FLA210F-96
5	SET 2' IP & BR CAP	FLA210F-96
6	SET 2' IP & BR CAP	FLA210F-96
7	FD 2 x 2 T	AL210F-536
8	SET 2' IP * T-BAR	0307.001-7
9	SET 2' IP & BR CAP	FLA210F-96
10	SET 2' IP & BR TAG	LA CO CSB3082
11	SET 2' IP & BR TAG	LA CO CSB3082
12	SET 2' IP & BR TAG	LA CO CSB3082

**LEGEND**

- ⊙ — LOS ANGELES COUNTY SURVEY CONTROL POINTS
- △ — PRIMARY CONTROL POINTS
- — MONUMENTS SET OR FOUND, ALSO B'C'S AND E'C'S
- ◊ — ANGLE POINTS
- ◇ — SECTION CORNERS
- M — GROUND DISTANCE MEASURED WITH CHAIN
- DM — GROUND DISTANCE MEASURED WITH DISTOMAT
- GM — GROUND DISTANCE MEASURED WITH GEODIMETER
- A — ADJUSTED GRID DISTANCE
- R/C — RECORDED VALUE AS ESTABLISHED PREVIOUSLY
- D — DISTANCE AND BEARINGS PER L.A. CSB 3082

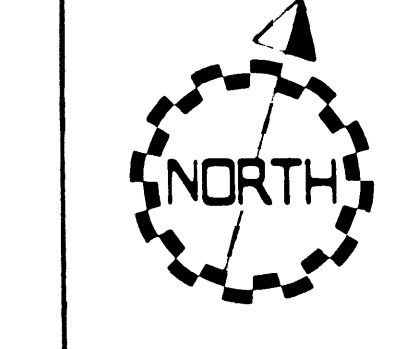
**NOTE**

- BEARINGS ARE BASED ON THE CALIFORNIA COORDINATE SYSTEM DIVISION 8. SECTION 8808 OF THE 1953 PUBLIC RESOURCES CODE, AND ARE DERIVED FROM THE 1971 VALUE OF THE LOS ANGELES COUNTY SURVEY CONTROL POINTS AS SHOWN.
- DIVISION OF HIGHWAYS SURVEY INFORMATION IS AVAILABLE FROM THE ENGINEERING SERVICES DEPARTMENT, LOS ANGELES, CALIFORNIA.
- DIVISION OF HIGHWAYS RIGHT OF WAY INFORMATION IS AVAILABLE FROM THE RIGHT OF WAY DEPARTMENT, LOS ANGELES, CALIFORNIA.
- STATIONING SHOWN ON THIS MAP IS FOR REFERENCE ONLY.

**IN LOS ANGELES COUNTY**

BLK 1334 MOD 85 86  
5455, 56, 64, 65, 66, 67, 68

CONSTRUCTION CONTRACT NO. 012414  
COMPLETION DATE: MAY 1, 1972



SCALE: 1" = 100'  
0 100 200 300 400 500 FEET

**LOS ANGELES COUNTY FILE NO.**

DISTRICT	COUNTY	ROUTE	POST MILES - TOTAL PROJECT	PROJECT NO.	SHEETS	NO. OF PAGES
07	LA	210	47.6485		2	

Prepared by: **D ANDERSON**

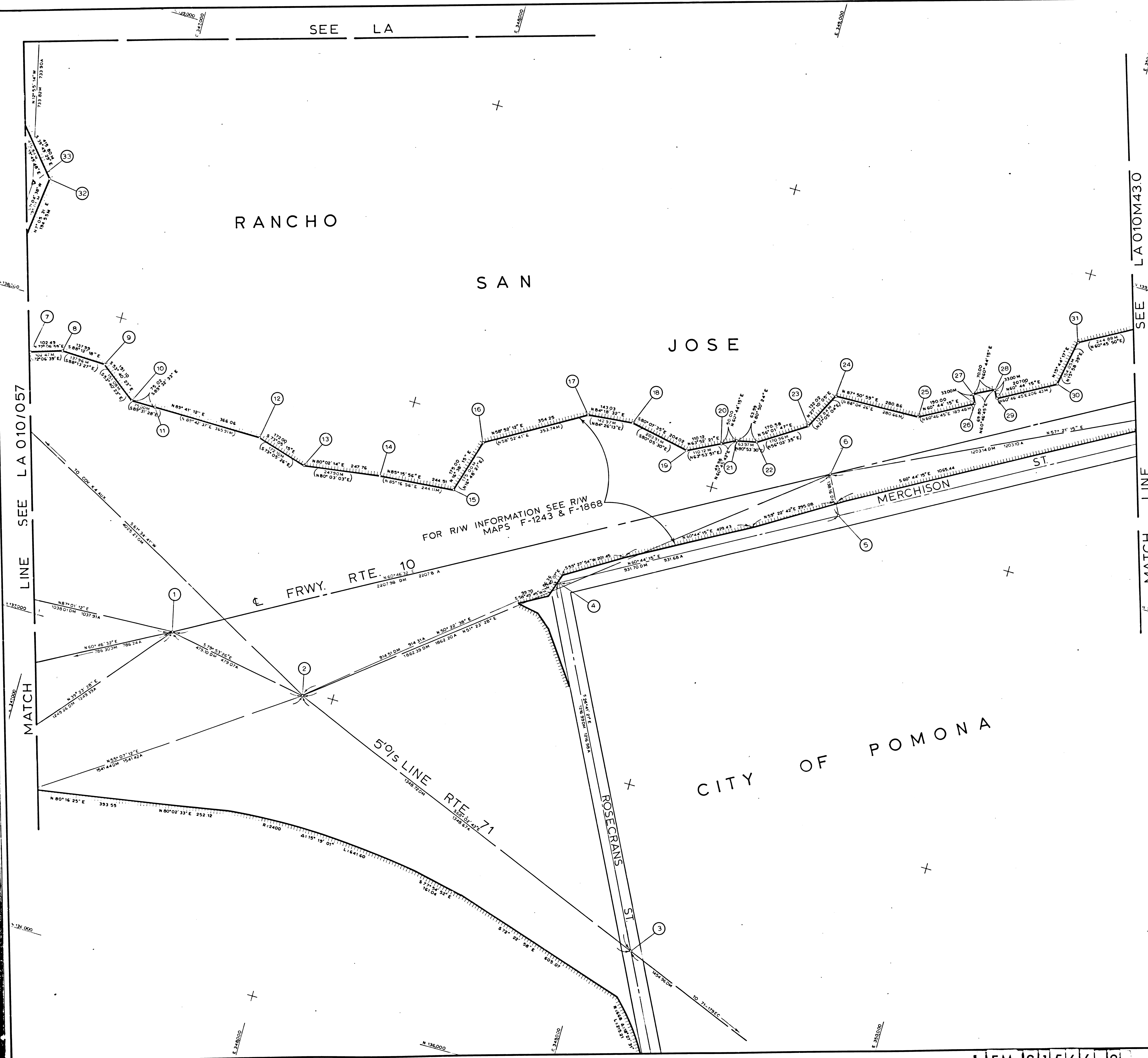
STATE OF CALIFORNIA DIVISION OF HIGHWAYS SURVEYS

Checked by: <b>L PRICE</b>	Drawn by: <b>KRASZEWSKI</b>
Supervisor: <b>KRASZEWSKI</b>	Operator: <b>L PRICE</b>
Survey: <b>010/057</b>	Other: <b>DON EBERLY</b>

A.E. VAN RYEN  
C.E. 16906

Date: **5/5/72**

F.M. 21566-1



NO.	DESCRIPTION	REFERENCE	NORTHING	EASTING
1	SET BR CAP IN 2' I.P.	FLA210F-97		
2	SET BR CAP IN 2' I.P.	FLA210F-97		
3	FD L & T	FLA210F-101		
4	FD LA CO RD MON	FLA210F-98		
5	FD SO SPK S T	FLA210F-98		
6	FD SUR MON IN WELL	FLA210F-97		
7	SET 2' IP & BR TAG	LA CO CSB3082		
8	SET 2' IP & BR TAG	LA CO CSB3082		
9	SET 2' IP & BR TAG	LA CO CSB3082		
10	SET 2' IP & BR TAG	LA CO CSB3082		
11	SET 2' IP & BR TAG	LA CO CSB3082		
12	SET 2' IP & BR TAG	LA CO CSB3082		
13	SET 2' IP & BR TAG	LA CO CSB3082		
14	SET 2' IP & BR TAG	LA CO CSB3082		
15	SET 2' IP & BR TAG	LA CO CSB3082		
16	SET 2' IP & BR TAG	LA CO CSB3082		
17	SET 2' IP & BR TAG	LA CO CSB3082		
18	SET 2' IP & BR TAG	LA CO CSB3082		
19	SET 2' IP & BR TAG	LA CO CSB3082		
20	SET 2' IP & BR TAG	LA CO CSB3082		
21	SET 2' IP & BR TAG	LA CO CSB3082		
22	SET 2' IP & BR TAG	LA CO CSB3082		
23	SET 2' IP & BR TAG	LA CO CSB3082		
24	SET 2' IP & BR TAG	LA CO CSB3082		
25	SET 2' IP & BR TAG	LA CO CSB3082		
26	SET 2' IP & BR TAG	LA CO CSB3082		
27	SET 2' IP & BR TAG	LA CO CSB3082		
28	SET 2' IP & BR TAG	LA CO CSB3082		
29	SET 2' IP & BR TAG	LA CO CSB3082		
30	SET 1" IP & BR TAG	LA CO CSB3082		
31	SET LEAD & BR TAG	LA CO CSB3082		
32	SET 2' IP & BR TAG	LA CO CSB3082		
33	FD 3/4 IP IN CONC	ALA210F-536		

LEGEND

- ⊙ — LOS ANGELES COUNTY SURVEY CONTROL POINTS
- △ — PRIMARY CONTROL POINTS
- — MONUMENTS SET OR FOUND, ALSO B.C.'S AND E.C.'S
- ∠ — ANGLE POINTS
- ◇ — SECTION CORNERS
- M — GROUND DISTANCE MEASURED WITH CHAIN
- DM — GROUND DISTANCE MEASURED WITH DISTOMAT
- GM — GROUND DISTANCE MEASURED WITH GEODIMETER
- A — ADJUSTED GRID DISTANCE
- REC — RECORDED VALUE AS ESTABLISHED PREVIOUSLY
- ( ) — DISTANCE AND BEARINGS PER L.A. CSB 3082

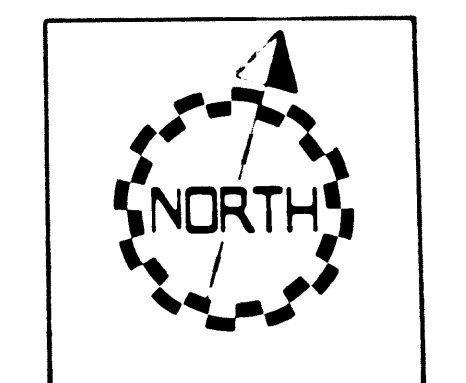
NOTE

- BEARINGS ARE BASED ON THE CALIFORNIA COORDINATE SYSTEM DIVISION 8, SECTION 8809 OF THE 1953 PUBLIC RESOURCES CODE, AND ARE DERIVED FROM THE 1971 VALUE OF THE LOS ANGELES COUNTY SURVEY CONTROL POINTS AS SHOWN.
- DIVISION OF HIGHWAYS SURVEY INFORMATION IS AVAILABLE FROM THE ENGINEERING SERVICES DEPARTMENT, LOS ANGELES, CALIFORNIA.
- DIVISION OF HIGHWAYS RIGHT OF WAY INFORMATION IS AVAILABLE FROM THE RIGHT OF WAY DEPARTMENT, LOS ANGELES, CALIFORNIA.
- STATIONING SHOWN ON THIS MAP IS FOR REFERENCE ONLY.

**IN LOS ANGELES COUNTY**

BLK 1334 MOD 67680977.78.79.88.89

CONSTRUCTION CONTRACT NO. 012414  
COMPLETION DATE: MAY 1, 1972



SCALE - 1" = 100'

LOS ANGELES COUNTY FILE NO.

DISTRICT COUNTY ROUTE POST MILES - TOTAL PROJECT NO. SHEETS	07 LA 10 476/485 2 2	DATE OF PLOT	1972
STATE OF CALIFORNIA DIVISION OF HIGHWAYS	PROJECT ENGINEER	DESIGNED BY	D. ANDERSON
MONUMENTATION MAP	L. PRICE	PROJECT ENGINEER	L. KRASZEWSKI
DATUM CALIFORNIA COORDINATE SYSTEM - ZONE 7	MAP NO. 11071	DESIGNED BY	L. PRICE
DATE	3/5/75	SURVEY OFFICE SUPERVISOR	DON EBRLEY
DATE			

FM 21566-2