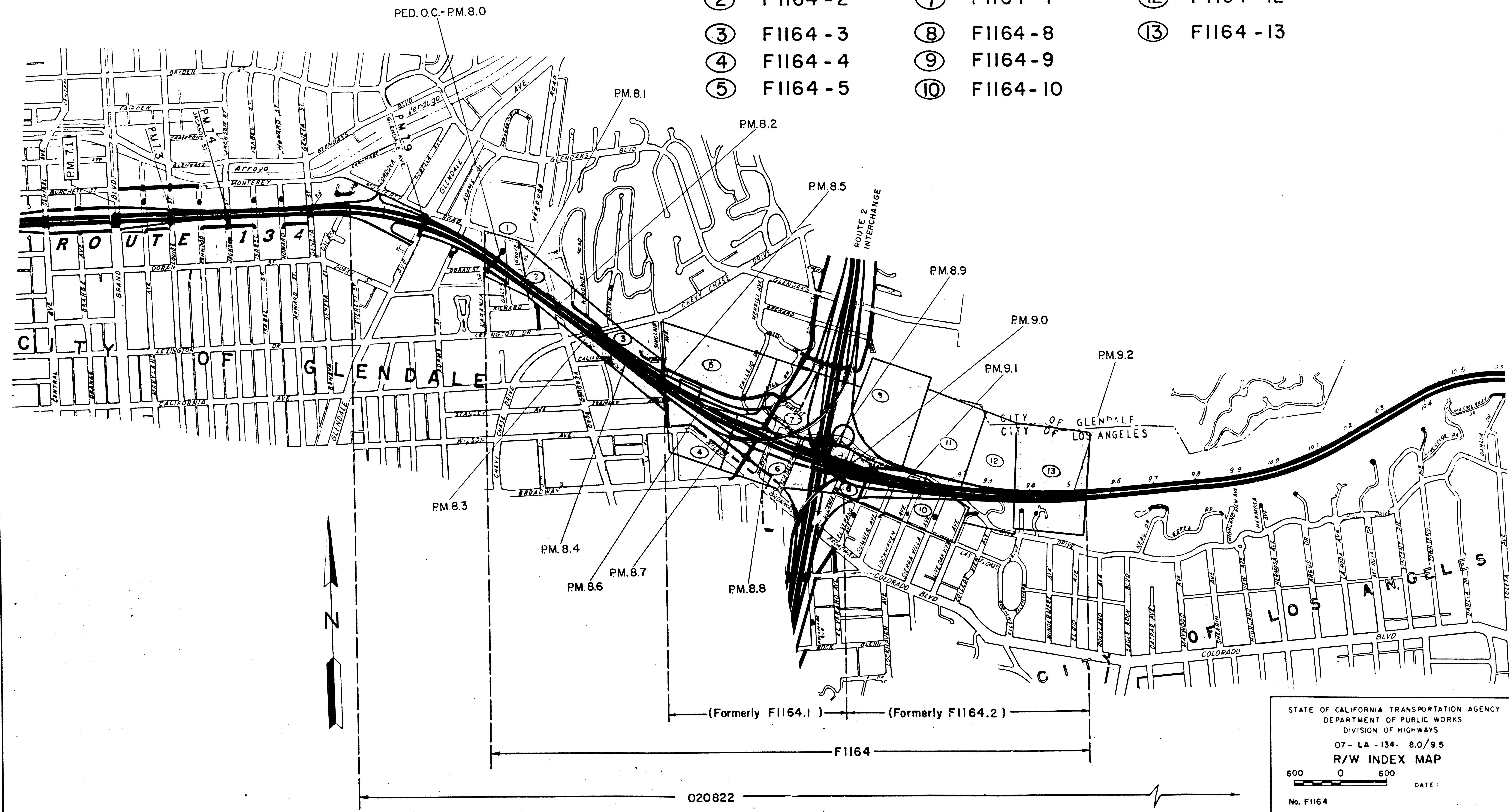


F1164 INDEX SHEET

- | | | |
|-------------|--------------|--------------|
| ① F1164 - 1 | ⑥ F1164 - 6 | ⑪ F1164 - 11 |
| ② F1164 - 2 | ⑦ F1164 - 7 | ⑫ F1164 - 12 |
| ③ F1164 - 3 | ⑧ F1164 - 8 | ⑬ F1164 - 13 |
| ④ F1164 - 4 | ⑨ F1164 - 9 | |
| ⑤ F1164 - 5 | ⑩ F1164 - 10 | |

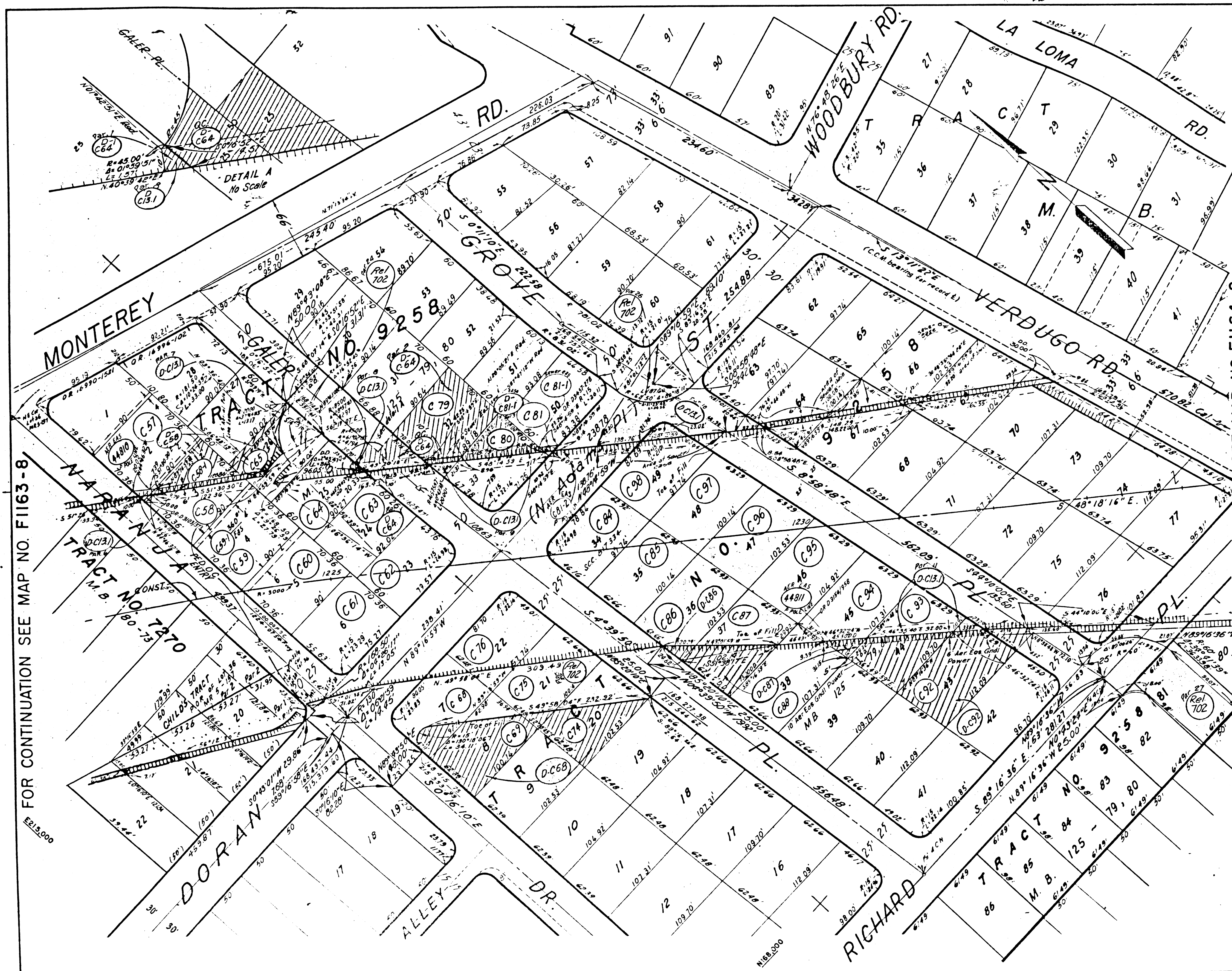


STATE OF CALIFORNIA TRANSPORTATION AGENCY
 DEPARTMENT OF PUBLIC WORKS
 DIVISION OF HIGHWAYS
 07- LA - 134- 8.0/9.5
R/W INDEX MAP
 600 0 600
 No. F1164
 DATE:

020822

F.M. 21583-1

DATED:



PARCEL NO	GRANTOR OR GRANTEE	AREA * ACO EXCESS TOTAL	INST DATE OR	RECORDING DATA
C 67	BERG		FEE 11-3-65	D3103-313
C 68	KRAUS		FEE 10-30-62	D1806-426
C 68-1	KRAUS		I F E EASE 10-30-62	D1806-426
C 59	AITKEN		FEE 12-17-63	D2291-874
C 59-1	AITKEN		I F E EASE 12-17-63	D2291-874
C 60	MEYER		FEE 10-26-62	D1803-315
C 61	NEUMAYER		FEE 10-23-62	D1798-349
C 62	ALFORD		FEE 3-8-53	D1945-447
C 63	CRON		FEE 10-22-62	D1786-897
C 64	KREIMER		FEE 1-2-63	D1870-547
C 65	CANFIELD		FEE 11-17-64	D2701-64
C 66	HEATON		FEE 4-28-64	D2450-261
C 67	BEATTY		FEE 2-10-66	D3203-482
C 74	FLEWELLING		FEE 5-1-64	D2455-882
C 75	PISA		FEE 3-3-65	D2818-394
C 76	WITHROW, ETAL		FEE BY COND 1-27-64	D2336-910
C 79	JAMISON		FEE 8-24-63	D3025-356
C 80	WITHROW, ETAL		FEE BY COND 10-15-63	D2220-103
C 81	ALBRIGHT		FEE 10-18-66	D3457-278
C 81-1	ALBRIGHT		SEW EASE 10-18-66	D3457-278
C 81-2	ALBRIGHT TO CITY OF GLENDALE		AER EASE 10-18-66	D3457-278
C 84	PISA ETAL		FEE BY COND 4-28-64	D2451-243
C 85	JOHNSTON		FEE 10-9-63	D2811-912
C 86	MALIN		FEE 8-15-62	D1723-214
C 87	HYMERS		FEE 6-28-62	D2857-418
C 88	CUMMING		FEE 12-23-63	D3154-958
C 92	BREIER		FEE 10-22-65	D3080-104
C 93	EVANSON		FEE 9-15-64	D2626-527
C 94	BARKER		FEE 7-28-64	D2565-812
C 95	WITHROW		FEE 10-30-64	D2882-656
C 96	PETERSEN		FEE 11-5-64	D2888-641
C 97	FASO		FEE 8-25-63	D2078-282
C 98	CARLSON		FEE 3-4-63	D1940-82
44810	BERG TO CITY OF GLENDALE		AER EASE 6-27-65	D3347-458
44811	CUMMING TO CITY OF GLENDALE		AER EASE 11-14-65	D3479-827
D-C13-1	STATE TO CITY OF GLENDALE		D D EASE 10-18-66	D4188-534
D-C58	STATE TO BERG		D D 9-23-70	D4840-335331
D-C64	STATE TO BORG		D D 10-21-69	D4531-36
D-C88	STATE TO GRIFFITH		D D 10-1-69	D4314-143/43
D-C81-1	STATE TO CITY OF GLENDALE		D D DECREASE 6-22-70	D4748-39/41
D-C86	STATE TO CUMMING		D D 1-26-67	D3542-443
D-C87	STATE TO CUMMING		D D 3-4-65	D3227-395
D-C92	STATE TO KREIMER		D D 4-20-70	D4690-249/42
REL 702	STATE TO CITY OF GLENDALE		REL 5-2-70	A3394-104/105

FOR CONTINUATION SEE MAP NO. F1163-8

FOR CONTINUATION SEE MAP NO. F1164-2

ISSUE DATE _____

STATE OF CALIFORNIA
 TRANSPORTATION AGENCY
 DEPARTMENT OF PUBLIC WORKS
 DIVISION OF HIGHWAYS
 (OLD-07-LA-161GNDL)
R/W MAP
 NO. F1164-1
 07-LA-134-8.1

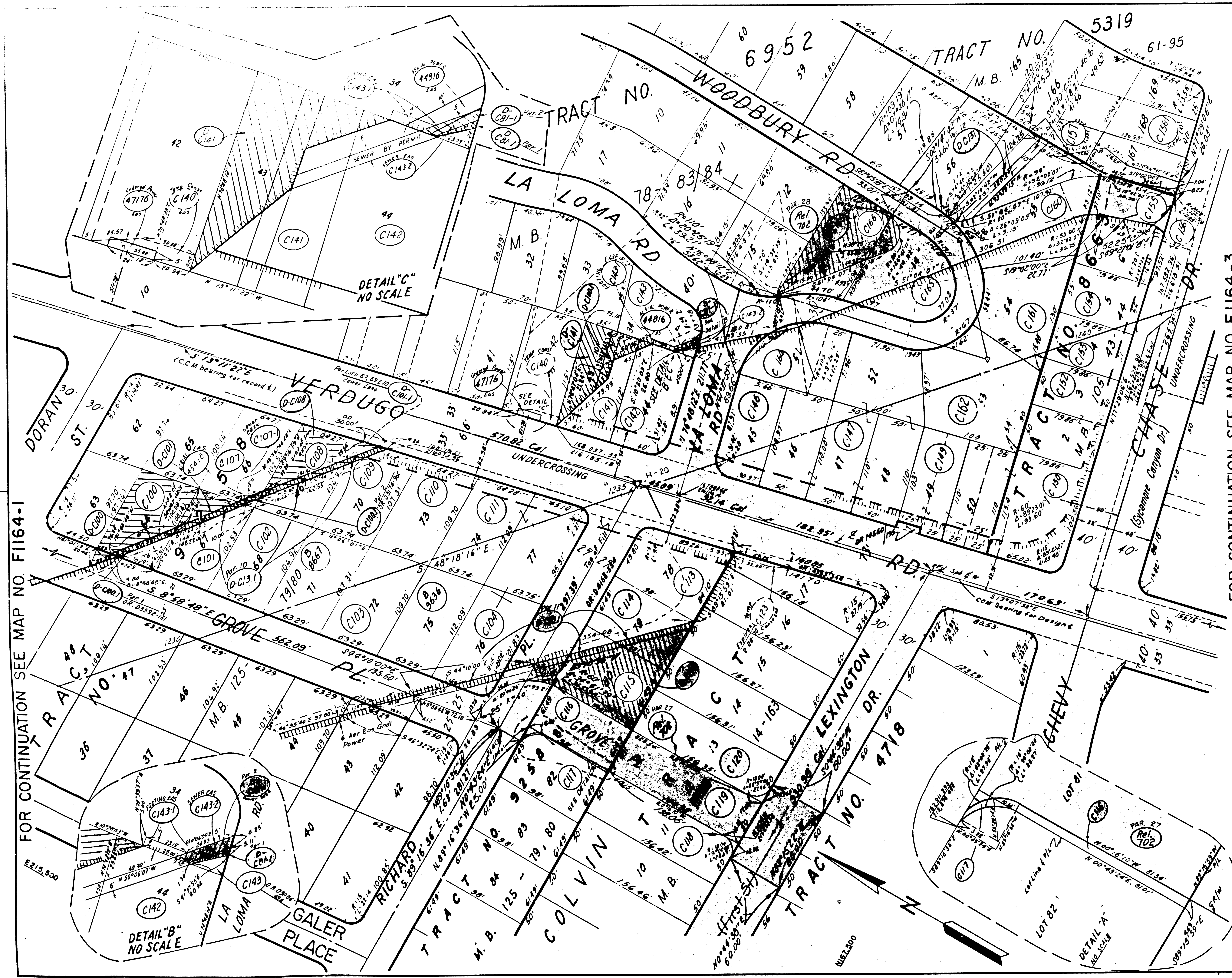
50 0 50
 RW PE DATE _____
 SR _____

LEGEND: ACCESS DENIED EXCLUDES STREET AREA
 AREA IN SQUARE FEET UNLESS OTHERWISE NOTED
 PREVIOUS RECORD DATA

F.M. 21583-2

FM 21583-2

TRACED BY EM



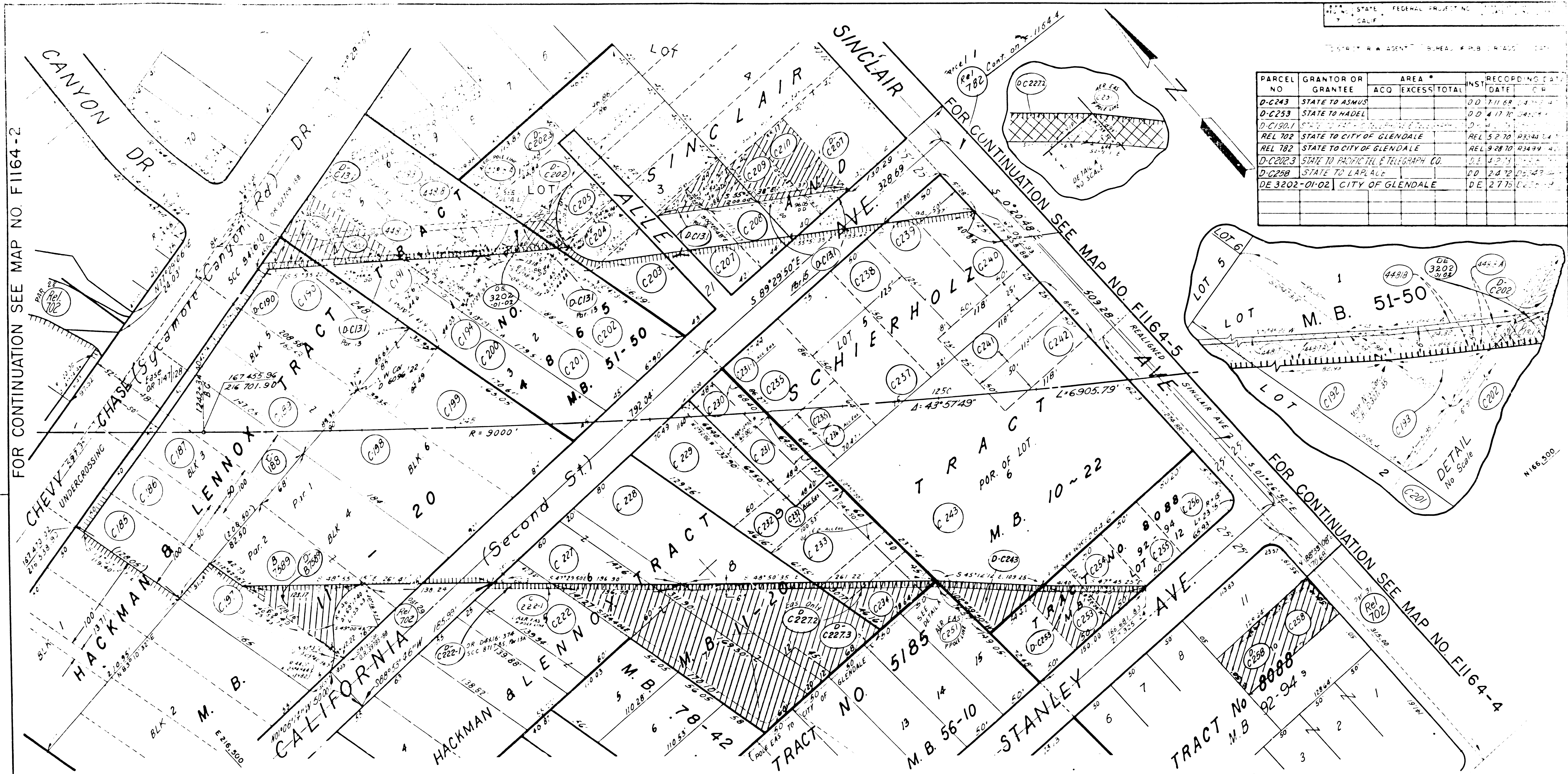
FOR CONTINUATION SEE MAP NO. F1164-3

FOR CONTINUATION SEE MAP NO. F1164-1

PARCEL NO.	GRANTOR OR GRANTEE	AREA *			INST.	RECORDING DATA	
		ACQ.	EXCESS	TOTAL		DATE	OR
B8667	SULLIVAN				FEE	12-21-62	D1862-526
B9636	POPE				FEE	1-23-62	D1488-176
C 100	BOVAR				FEE	1-27-63	D2891-252
C 101	YAUSSI				FEE	6-16-63	D2105-92
C 102	DRAKE				FEE	3-4-64	D2381-957
C 103	MILES				FEE	9-17-63	D2184-563
C 104	HARDY				FEE	8-22-62	D1731-355
C 107	SHOPE				FEE	1-13-66	D3174-960
C 107-1	SHOPE				SEW. EASE	1-13-66	D3174-960
C 108	GOLMANSIANTAL				FEE BY COND.	3-25-68	D3250-469
C 109	LA VIGNE				FEE	8-11-64	D2584-972
C 110	HUGHES				FEE	1-23-63	D1895-361
C 111	KIRK				FEE	1-18-64	D2320-50
C 113	SMITH				FEE	11-6-64	D2590-613
C 114	HAYDEN				FEE	2-26-63	D1932-223
C 115	ROGERS				FEE	9-29-64	D2644-5
C 116	SANTIGER				FEE	8-22-64	D2635-711
C 117	CAVE				FEE	10-20-63	D3086-885
C 118	WILLIAMS				FEE	7-29-63	D2994-588
C 119	CHARLES E. CARPENTER BLDG. CORP., INC.				FEE	10-2-64	D2649-936
C 120	GODDMOOT				FEE	6-11-65	D2936-834
C 123	ROSCO				TEMP. EASE		
C 140	BANKS				TEMP. EASE		
C 141	BANKS				FEE	4-30-64	D2453-692
C 142	CEGIELSKI				FEE	4-8-63	D1983-427
C 143	WHEELER				FEE	8-6-65	D3008-498
C 143-1	WHEELER				FOOT. EASE	8-6-65	D3008-498
C 143-2	WHEELER				SEWER EASE	8-6-65	D3008-498
C 146	WILSON				FEE	7-8-63	D2084-92
C 147	BUNTING				FEE	9-5-52	D1745-786
C 149	MAGNEW				FEE	1-25-64	D2333-3
C 150	ROYER				FEE	3-30-64	D2412-428
C 152	SHAWWETAL				FEE BY COND.	12-16-64	D2735-8
C 153	WERREN				FEE	6-4-63	D2065-685
C 154	DORN				FEE	7-8-63	D2094-99
C 155	ZSIGMONDOVICS				FEE	9-28-64	D2642-396
C 156	SANBLDM				FEE	11-26-63	D3126-647
C 156-1	SANBLDM				SLOPE EASE	11-26-63	D3126-647
C 157	LEVY				SLOPE EASE	11-11-67	D3328-414
C 160	TENNEY				FEE	11-20-64	D2705-789
C 161	MILLS				FEE	2-18-65	D2803-573
C 162	WALTON				FEE	8-6-63	D2133-592
C 164	MILLS				FEE	4-5-65	D2856-725
C 165	LU				FEE	11-19-63	D2260-704
C 166	KNEEDLER				FEE	6-20-66	D3340-394
44816	WHEELER TO CITY OF GLENDALE				AER. EASE	10-10-66	D3440-972
45418	SHOPE TO CITY OF GLENDALE				AER. EASE	8-17-66	D3338-629
47176	BAILEY TO CITY OF GLENDALE				U.G.R.P.M. EASE	12-28-67	D3871-239
D-219-A	STATE TO CITY OF GLENDALE				D.D. EASE	10-18-64	D4168-554
D-219-B	STATE TO CITY OF GLENDALE				D.D. EASE	10-22-70	D4748-3941
D-219-C	STATE TO STALNAKER				D.D.	3-23-70	D3392-181
D-219-D	STATE TO CITY OF GLENDALE				D.D. EASE	6-22-70	D4748-36189
D-219-E	STATE TO STALNAKER				D.D.	8-9-70	D4781-150189
D-219-F	STATE TO CITY OF GLENDALE				D.D. SEW. EASE	10-20-71	D3392-698
D-219-G	STATE TO SATTERLEE				D.D.	1-22-71	D4850-808
D-219-H	STATE TO J. PHIL JOHNSON CO.				D.D.	4-20-70	D4680-28285
D-219-I	STATE TO BAILEY				D.D.	5-7-68	D4367-197199
D-219-J	STATE TO HOUNSELL				D.D.	4-28-70	D4688-52852
REL 782	STATE TO CITY OF GLENDALE				REL.	3-2-70	D3394-704785

ISSUE DATE	STATE OF CALIFORNIA	
	TRANSPORTATION AGENCY	DEPARTMENT OF PUBLIC WORKS
	DIVISION OF HIGHWAYS	
	(OLD - 07 - LA - 161 GN DL)	
	R/W MAP NO. F1164-2	
	07-LA-134-8.2	
	DATE	SR.
LEGEND:		
+ ACCESS DENIED + EXCLUDES STREET AREA		
* AREA IN SQUARE FEET UNLESS OTHERWISE NOTED		
() PREVIOUS RECORD DATA		

TRACED BY EM



PARCEL NO	GRANTOR OR GRANTEE	ACQ	EXCESS	TOTAL	INST	RECORDING DATE	OR
D-C243	STATE TO ASMUS					00	7-11-68
D-C253	STATE TO HADEL					00	4-17-70
D-C190.1	STATE TO CITY OF GLENDALE					REL	5-2-70
REL 782	STATE TO CITY OF GLENDALE					REL	9-28-70
D-C202.3	STATE TO PACIFIC TEL & TELEGRAPH CO.					DE	4-2-73
D-C258	STATE TO LAP AGE					FD	2-4-72
DE 3202-01-02	CITY OF GLENDALE					DE	2-7-75

FOR CONTINUATION SEE MAP NO. F1164-2

FOR CONTINUATION SEE MAP NO. F1164-5

FOR CONTINUATION SEE MAP NO. F1164-4

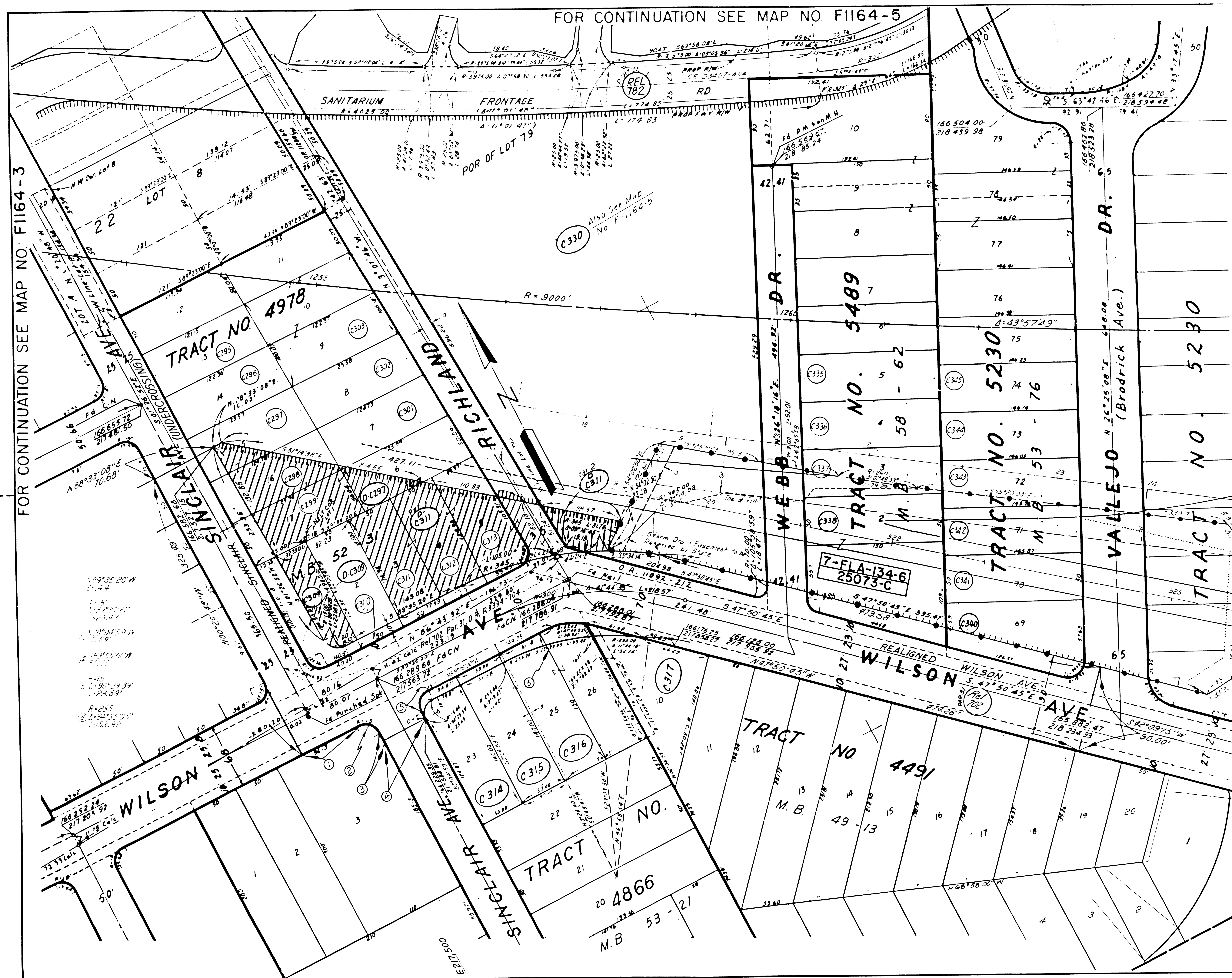
PARCEL NO	GRANTOR OR GRANTEE	ACQ	EXCESS	TOTAL	INST	RECORDING DATE	OR	PARCEL NO	GRANTOR OR GRANTEE	ACQ	EXCESS	TOTAL	INST	RECORDING DATE	OR	PARCEL NO	GRANTOR OR GRANTEE	ACQ	EXCESS	TOTAL	INST	RECORDING DATE	OR	PARCEL NO	GRANTOR OR GRANTEE	ACQ	EXCESS	TOTAL	INST	RECORDING DATE	OR	ISSUE DATE
B7589	STUMPH				FEE	5-14-62	D1613-52	C 202	SPENCER, ET AL				FEE BY COND	6-24-65	D2952-990	C 232	CHRISTENSON				FEE	4-15-63	D1991-399	C 254	BESSER				FEE	4-12-63	D1989-859	
C 185	DEAN				FEE	4-18-63	D1993-19	C 203	GHOSLIN				FEE	7-18-64	D2351-860	C 232-1	CHRISTENSON				FEE	2-20-63	D1927-121	C 255	HANSON				FEE	1-24-64	D2334-807	
C 186	SHAW, ET AL				FEE BY COND	12-16-64	D2735-8	C 204	SHARECK				FEE EASE	7-12-63	D2101-68/70	C 256	OSIEW				FEE	1-24-64	D2334-807	C 256	OSIEW				FEE	12-20-62	D1881-278	
C 187	FORD				FEE	12-17-63	D2291-880	C 205	SCOTT				FEE	4-18-63	D1998-62	C 258	FORD			6,432	FEE	1-24-64	D2334-807	C 258	FORD				FEE	12-20-62	D1881-278	
C 188	THOMPSON				FEE	8-20-64	D2597-236	C 207	SPENCER, ET AL				FEE BY COND	2-9-66	D3202-725	C 235	BRINTON				FEE	9-4-64	D2618-936	44817	CHRISTOPHERSON TO CITY OF GNDL				AER EASE	10-7-66	D3449-108/110	
C 189	THOMPSON				FEE	5-7-64	D2463-360	C 208	LISS				FEE	6-29-65	D2957-414	C 236	CAPPER				FEE	11-27-62	D1834-720	44817-A	CHRISTOPHERSON TO PT ET CO				AER EASE	10-7-66	D3449-108/110	
C 190	STRAND				FEE	11-24-64	D2700-158	C 209	KHANDYAN				FEE	2-23-66	D3215-328	C 236-1	CAPPER				ACC EASE	11-27-62	D1834-720	44818	DESMOND TO CITY OF GLENDALE				AER EASE	10-7-66	D3449-108/110	
C 191	BAGDASARIAN ET AL				FEE	6-29-66	D3350-312	210	DIGATI				FEE	4-20-65	D2814-305	C 237	DIAMOND				FEE	8-27-64	D2605-754	44818-A	DESMOND TO PT ET CO				AER EASE	10-7-66	D3449-108/110	
C 192	BRADLEY				FEE	7-28-65	D2989-488	C 222	BAGDASARIAN, ET AL				FEE BY COND	8-29-68	D4116-374	C 238	SINCLAIR				FEE	11-19-64	D2704-179	D-B7589	STATE TO DESARIO				D	12-16-71	D3290-604/607	
C 193	DESARIO				FEE	12-5-65	D3071-35	C 222-1	BAGDASARIAN, ET AL				EASE BY COND	8-29-68	D4116-374	C 239	BRINN				FEE	7-1-64	D2591-761	D-C131	STATE TO CITY OF GLENDALE				D	10-18-68	D4168-554	
C 194	BAGDASARIAN, ET AL				FEE BY COND	9-13-66	D3425-571	C 227	PIGG, ET AL				EASE BY COND	8-29-68	D4116-374	C 240	HEALD				FEE	6-29-65	D2957-418	D-C180	STATE TO JELLIFFE				D	7-2-70	D4760-8100/5	
C 197	DESARIO				FEE	7-28-65	D2992-915	C 228	PIGG, ET AL				FEE BY COND	8-29-64	D2608-435	C 241	NOEL				FEE	8-11-64	D2584-939	D-C202	STATE TO MYERS				D	9-24-70	D4841-41/41.3	
C 198	CARTWRIGHT				FEE	2-17-65	D2822-43	C 229	NARALOSTED				FEE	3-11-63	D1948-168	C 242	HALLIFAX				FEE	3-2-65	D2816-793	D-C207	STATE TO VAN NESS				D	7-22-70	D4779-598/599	
C 199	BONHART				FEE	4-22-63	D2899-852	C 230	THURIG				FEE	7-31-64	D2521-229	C 243	SINCLAIR				FEE	10-19-62	D1795-390	D-C222-1	STATE TO CITY OF GLENDALE				D	9-26-69	D4509-389	
C 200	POLEWY				FEE	2-4-64	D2346-131	C 231	SWART				FEE	2-14-63	D1920-377	C 251	ASMUS TO CITY OF GLENDALE				FEE	6-27-66	D3347-460	D-C227.2	STATE TO CITY OF GLENDALE				D	5-16-68	D4004-31	
C 201	TAYLOR				FEE	8-5-64	D2478-38	C 231-1	SWART				ACC EASE	2-14-63	D1920-377	C 253	KAMP				FEE	1-26-65	D2989-507	D-C227.3	STATE TO ANDERSON				D	4-16-71	D4029-848/849	

STATE OF CALIFORNIA
TRANSPORTATION DEPARTMENT OF
AGENCY PUBLIC WORKS
DIVISION OF HIGHWAYS

(OLD-07-LA-161 GNDL)
R/W MAP
NO. F1164-3
07-LA-134-8.4

50 0 50
RWPE DATE
SR

LEGEND:
ACCESS DENIED
EXCLUDES
AREA IN SQUARE FEET UNLESS OTHERWISE NOTED
PREVIOUS RECORD DATA



FOR CONTINUATION SEE MAP NO. F1164-3

FOR CONTINUATION SEE MAP NO. F1164-5

STATE OF CALIFORNIA
 DEPARTMENT OF PUBLIC WORKS
 DIVISION OF HIGHWAYS

PARCEL NO	GRANTOR OR GRANTEE	AREA ACO	EXCESS	TOTAL	INS.	RECORDING DATA DATE OR
C 296						
C 297						
C 298						
C 299	MATTS					
C 300						
C 301						
C 302						
C 303						
C 304						
C 305						
C 306						
C 307						
C 308						
C 309						
C 310						
C 311						
C 312						
C 313	SO CALIF ASSN OF TIMBER ADVENT					
C 314						
C 315						
C 316	GREGORY					
C 317	ROGERS					
C 318	JULYDALE SANITARIUM					
C 319						
C 320						
C 321						
C 322						
C 323						
C 324						
C 325						
C 326						
C 327						
C 328						
C 329						
C 330						
C 331						
C 332						
C 333						
C 334						
C 335						
C 336						
C 337						
C 338						
C 339						
C 340						
C 341						
C 342						
C 343						
C 344						
C 345						
D-C309	STATE TO DRAGO					
D-C311	STATE TO TUCKMAN					
REL-702	STATE TO CITY OF GLENDALE					
C-343	JOHNSON					
REL-782	CITY OF GLENDALE					
D-C297	TUCKMAN					

ISSUE DATE _____

STATE OF CALIFORNIA
 DEPARTMENT OF PUBLIC WORKS
 AGENCY DIVISION OF HIGHWAYS

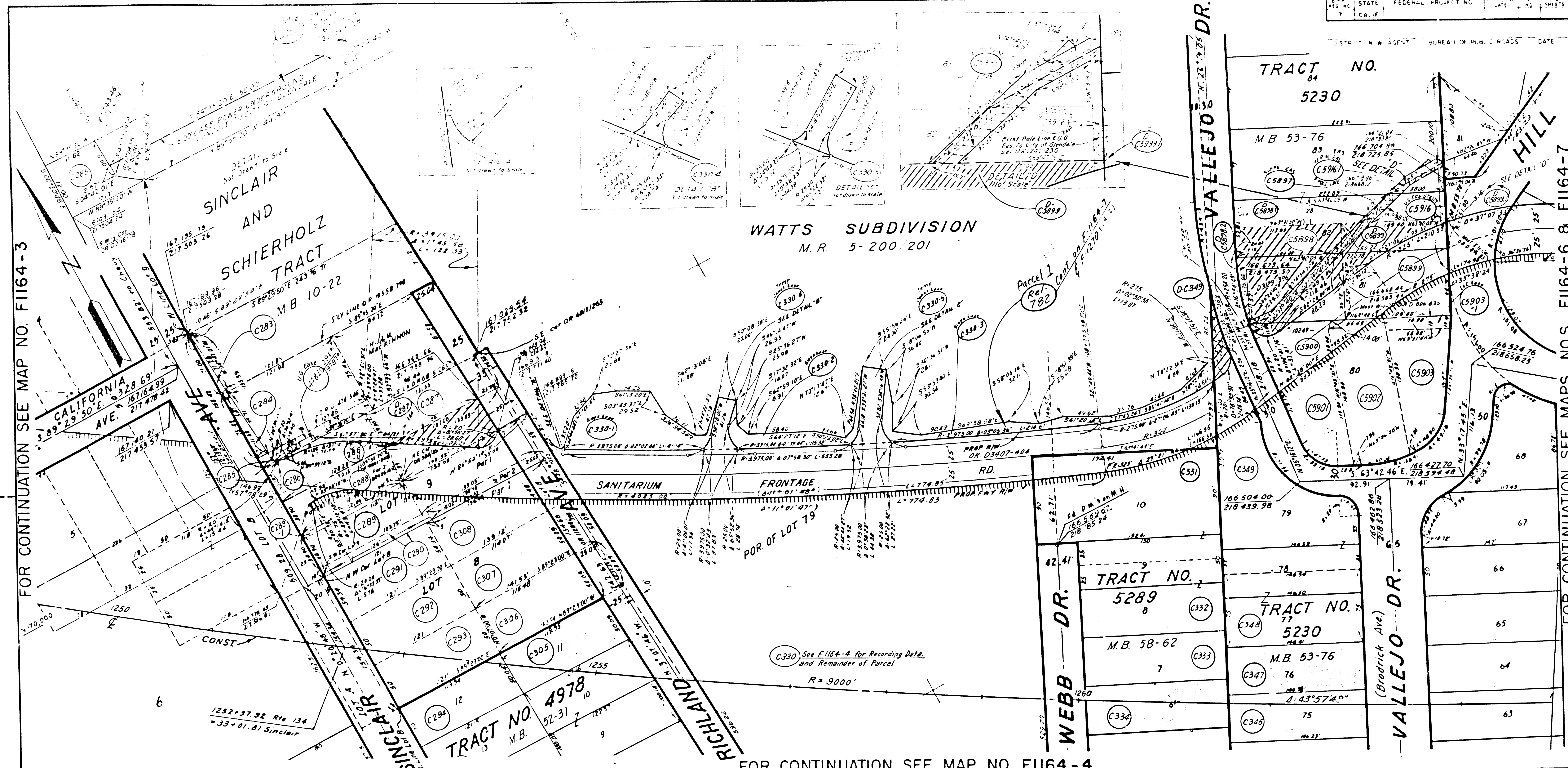
(OLD - 07-LA-161)
R/W MAP
 NO. F1164-4
 07-LA-134-8.6

50 0 50
 RWPE DATE _____
 SR _____

LEGEND: ACCESS DENIED EXCLUDES STREET AREA
 AREA IN SQUARE FEET UNLESS OTHERWISE NOTED
 PREVIOUS RECORD DATA

F1164-4
 TRACED BY L.H.A.

F.M. 21583-5



FOR CONTINUATION SEE MAP NO. F1164-3

FOR CONTINUATION SEE MAPS NOS. F1164-6 & F1164-7

FOR CONTINUATION SEE MAP NO. F1164-4

PARCEL NO.	GRANTOR OR GRANTEE	AREA *			INST.	RECORDING DATA		PARCEL NO.	GRANTOR OR GRANTEE	AREA *			INST.	RECORDING DATA		PARCEL NO.	GRANTOR OR GRANTEE	AREA *			INST.	RECORDING DATA		ISSUE DATE					
		ACQ.	EXCESS	TOTAL		DATE	OR			ACQ.	EXCESS	TOTAL		DATE	OR			ACQ.	EXCESS	TOTAL		DATE	OR		ACQ.	EXCESS	TOTAL	DATE	OR
283	SCHLOTZHAVER				FEE	12-29-63	D3159-171	3307	SANDSTROM				FEE	3-23-63	D2841-214	3898	MEHL				FEE	11-30-63	D3129-396	D-C5898	STATE TO CANNON	D.D.	5-25-67	D3653-570	
284	HERNDON				FEE	11-17-66	D3177-877	3308	EARL				FEE	10-28-63	D3096-426	3899	MCKINNEY				FEE	6-9-64	D2502-109	D-C5899,1	STATE TO PACIFIC TELEPHONE & TELEGRAPH CO.	DK	4-2-73	D5816-768	
285	WACKINNON				FEE	11-16-63	D3116-78	3300-1	GLENDALE SANITARIUM	SLOPE EASE	8-24-66	D3407-404	3900	CHRISTENSON							FEE	7-6-64	D2539-40						
286	CHESTER				FEE	11-23-63	D3123-604	3300-2	GLENDALE SANITARIUM	SLOPE EASE	8-24-66	D3407-404	3901	YOUNG							FEE	7-6-64	D2537-585						
286-1	CHESTER				SLOPE EASE	11-23-63	D3123-604	3300-3	GLENDALE SANITARIUM	SLOPE EASE	8-24-66	D3407-404	3902	ADAMS							FEE	7-15-64	D2549-981						
287	WILBUR				FEE	8-14-65	D3023-352	3300-4	GLENDALE SANITARIUM	TEMP CONST EASE			3903	NOEL							FEE	7-28-64	D2565-799						
288	HUELL				FEE	3-27-65	D3887-64	3300-5	GLENDALE SANITARIUM	TEMP CONST EASE			3903-1	NOEL							EASE	7-28-64	D2565-799						
288-1	HUELL				EASE	3-27-65	D3887-65	3311	DE LONG			FEE	9-15-64	D2626-535	3916	CANNON TO PT ET					EASE	2-2-67	D3549-1						
289	SAZ-TZ				FEE	3-19-65	D3921-190	3312	DE LONG			FEE BY COND	10-2-64	D2651-85	3916-1	CANNON TO CITY OF GLENDALE					EASE	2-2-67	D3548-571						
290	COX				FEE	8-21-65	D4199-67	3313	WITCHELL			FEE	7-25-63	D2117-285	D-C287	STATE TO GLENDALE ADVENTIST HOSP					DD	7-31-69	D4452-18979						
291	COX				FEE	8-21-65	D4199-67	3314	LARSON			FEE	7-30-63	D2122-973	D-C349	STATE TO GLENDALE ADVENTIST HOSP					DD	3-24-70	D4666-136138						
292	WATSON				FEE	1-21-62	D1829-819	3316	JOHNSON			FEE	1-21-62	D1829-819	D-C5898,2	STATE TO GLENDALE ADVENTIST HOSP					DD	7-1-70	D4759-21821						
293	HEDRICK				FEE	8-18-65	D3923-137	3317	FORSTER			FEE	1-18-63	D1890-636	REL-702	STATE TO CITY OF GLENDALE					REL	4-2-70	R3394-10470						
294	WATSON				FEE	7-1-65	D4199-67	3318	HOGOSIAN			FEE	2-5-63	D2278-111	D-C5898,1	STATE TO CITY OF GLENDALE					DD EASE	5-9-69	D4365-396						
295	WATSON				FEE	8-21-65	D4199-67	3319	WATSON			FEE	5-22-64	D349-437	34020	WACKINNON TO CITY OF GLENDALE					UG EASE	9-3-68	D3424-473						
296	WATSON				FEE	8-21-65	D4199-67	3320	WATSON			SLOPE EASE	11-24-63	D2994-299	REL 782	STATE TO CITY OF GLENDALE					REL	9-28-70	R4393-420						

STATE OF CALIFORNIA
 TRANSPORTATION DEPARTMENT OF PUBLIC WORKS
 AGENCY
 DIVISION OF HIGHWAYS

(OLD - 07 - LA - 161)
R/W MAP
 NO. F1164-5
 07- LA - 134-8.6

50' 0' 50' DATE _____
 RWPE. SR

LEGEND: ACCESS DENIED EXCLUDES STREET AREA
 AREA IN SQUARE FEET UNLESS OTHERWISE NOTED
 PREVIOUS RECORD DATA

F.M. 21583-6

FM 21583-6

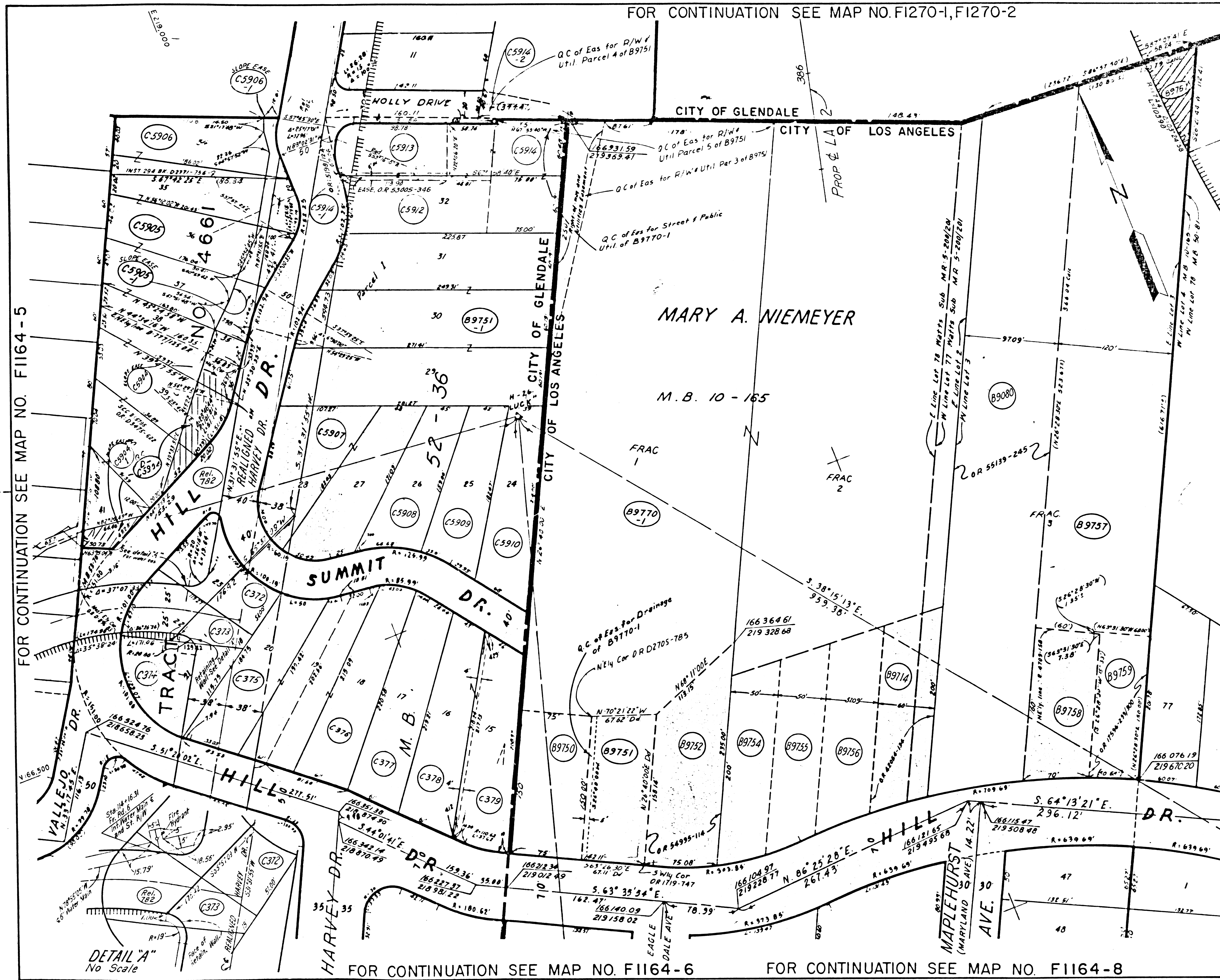
F1164-1

TRACED BY: L.R.A.

FOR CONTINUATION SEE MAP NO. F1270-1, F1270-2

STATE OF CALIFORNIA
FEDERAL PROJECT NO. 44-1-101-1
CALIF.

DISTRICT ENGINEER BUREAU OF PUBLIC WORKS DATE



FOR CONTINUATION SEE MAP NO. F1164-9

PARCEL NO	GRANTOR OR GRANTEE	AREA * ACQ EXCESS TOTAL	INST DATE OR	RECORDING DATA DATE OR
C372	DARREN ET AL	FEE B.C.C.	11-2-66	03174-4
C373	HESTON	FEE	02-25-64	02602-233
C374	JEANETTE ET AL	FEE B.C.C.	11-2-66	03171-661
C375	PENNOYER	FEE	9-2-60	026-8-312
376	NIER	FEE	11-2-66	02709-164
C377	WILSON ET AL	FEE	11-2-66	02631-634
C378	FENBERTH	FEE	5-15-53	01003-441
379	WILSON ET AL	FEE B.C.C.	11-2-66	03162-107
C3904	GRZESIAK	SLOPE EASE	11-2-66	03470-122
C3904-1	GRZESIAK	SLOPE EASE	11-2-66	03470-122
C3905	GLENDALE SANITARIUM & HOSP	FEE	11-2-66	03163-33
C3905-1	GLENDALE SANITARIUM & HOSP	SLOPE EASE	11-2-66	03163-33
C3906	LOWES	FEE	4-18-60	03214-73
C3906-1	LOWES	SLOPE EASE	4-18-60	03214-73
C3907	ROGERS	FEE	11-2-66	03146-594
C3908	SMITH	FEE	11-2-66	03259-26
C3909	BRISTOW	FEE	11-2-66	02492-248
C3910	BRISTOW	FEE	11-2-66	02537-530
C3912	WALSH	FEE	5-18-64	02474-536
C3913	COULSON	FEE	3-25-65	02844-527
C3914	WILSON	FEE	6-18-64	02514-559
C3914-1	WILSON	EASE	6-18-64	02514-559
C3914-2	WILSON	EASE	6-18-64	02514-559
B9800	NEARY	FEE	3-9-62	01538-319
B9714	HEINL	FEE	5-31-63	01631-854
B9750	OSBRINK	FEE	11-20-64	02705-785
B9751	MARKEY	FEE B.C.C.	11-1-65	03100-319
B9751-1	MARKEY	FEE B.C.C.	11-1-65	03100-319
B9752	SANDEEN	FEE	8-15-63	01719-747
B9754	PHIPPS	FEE	8-1-63	02126-581
B9755	O'BRIEN	FEE	10-25-63	02233-49
B9756	GEYER	FEE	9-3-63	02167-741
B9757	PUBLIC TITLE CO	FEE	2-22-65	03153-654
B9758	THOMSON	FEE	8-14-64	02590-68
B9759	JACKSON	FEE	4-2-64	02417-764
B9770	ANDRIES	FEE	7-19-66	03370-125
D-C5904	STATE TO GRZESIAK	D.D.	11-2-66	03470-122
D-B9757	STATE TO ANDRIES	FEE	4-28-67	03628-418
REL 782	STATE TO CITY OF GLENDALE	REL	9-28-70	R3499-420

FOR CONTINUATION SEE MAP NO. F1164-5

FOR CONTINUATION SEE MAP NO. F1164-9

DETAIL "A"
No Scale

FOR CONTINUATION SEE MAP NO. F1164-6

FOR CONTINUATION SEE MAP NO. F1164-8

ISSUE DATE _____

STATE OF CALIFORNIA
TRANSPORTATION AGENCY
DEPARTMENT OF PUBLIC WORKS
DIVISION OF HIGHWAYS

(OLD-07-LA-161)
R/W MAP
NO. F1164-7
07-LA-134-8.8

50 0 50
RWPE SR DATE _____

LEGEND:
ACCESS DENIED
AREA IN SQUARE FEET UNLESS OTHERWISE NOTED
PREVIOUS RECORD DATA

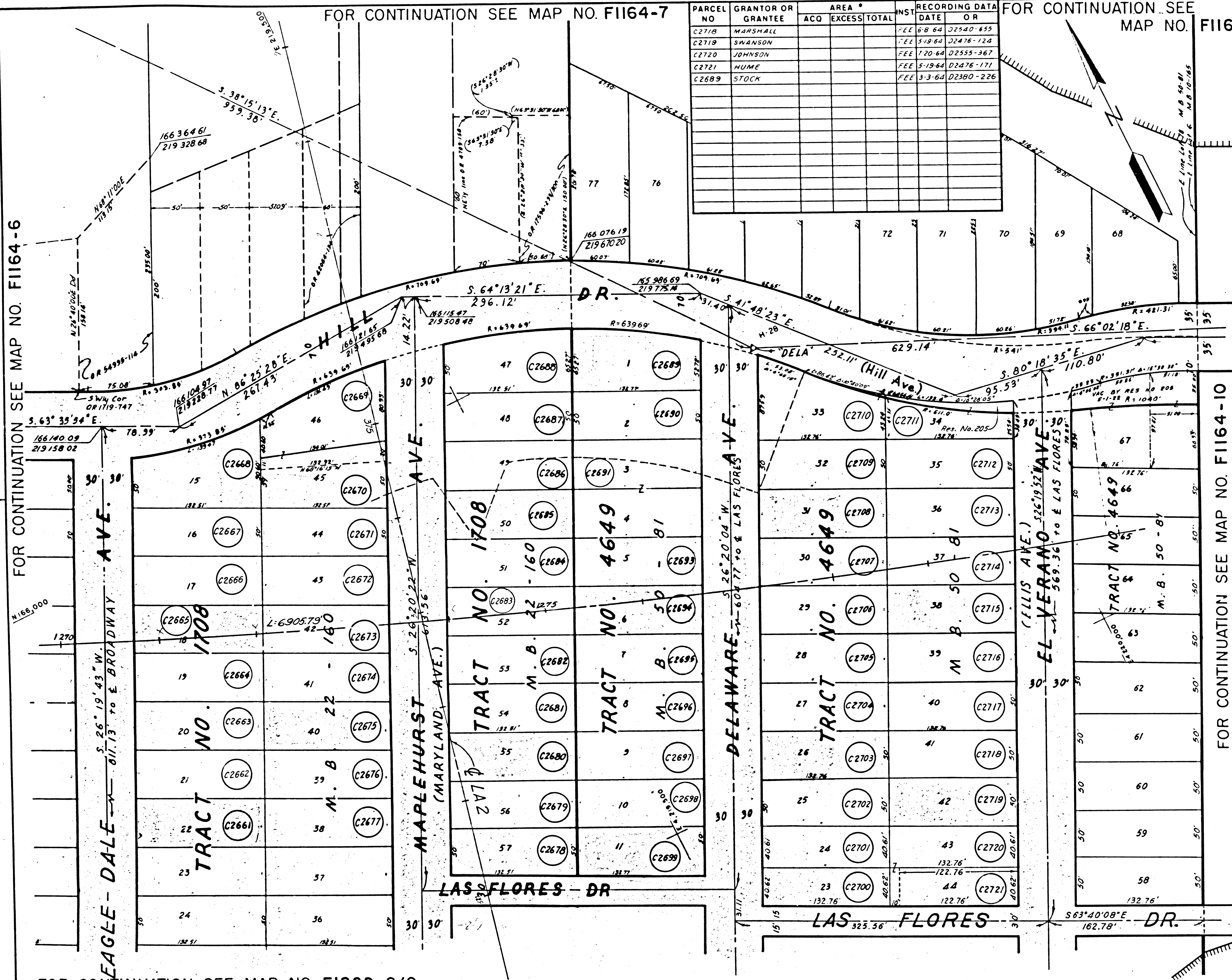
DATE _____

F.M. 21583-8

FM 21533-8

F1164.1

TRACED BY L.M.A.



FOR CONTINUATION SEE MAP NO. F1164-7

FOR CONTINUATION SEE MAP NO. F1164-9

FOR CONTINUATION SEE MAP NO. F1164-6

FOR CONTINUATION SEE MAP NO. F1164-10

FOR CONTINUATION SEE MAP NO. F1269-8/9

PARCEL NO	GRANTOR OR GRANTEE	AREA *		INST	RECORDING DATA DATE OR
		ACQ	EXCESS TOTAL		
C2718	MARSHALL			FEE	8-8-64 D2540-655
C2719	SWANSON			FEE	5-19-64 D2476-124
C2720	JOHNSON			FEE	7-20-64 D2555-367
C2721	HUME			FEE	5-19-64 D2476-171
C2689	STOCK			FEE	3-3-64 D2380-226

PARCEL NO	GRANTOR OR GRANTEE	AREA *		INST	RECORDING DATA DATE OR
		ACQ	EXCESS TOTAL		
C2661	POWELL			FEE	6-30-64 D2529-284
C2662	SCHUMACHER			FEE	10-1-63 D2201-713
C2663	HUGHES			FEE	9-1-64 D2611-500
C2664	SAULE			FEE	9-19-63 D2187-847
C2665	LOUGHFEED			FEE	9-24-63 D2192-907
C2666	WINSLOW			FEE	10-24-64 D2231-391
C2667	BALLARD			FEE	6-24-64 D2521-685
C2668	TUFTS			FEE	11-12-64 D2695-364
C2669	D.G.H. INC			FEE	5-6-64 D2461-67
C2670	SHEA			FEE	3-11-64 D2390-592
C2671	OAKDEN			FEE	3-31-64 D2414-267
C2672	KOEPKE			FEE	10-24-63 D2231-397
C2673	TERRY			FEE	10-2-63 D2203-547
C2674	KLEMPNER			FEE	12-19-63 D2295-62
C2675	DICK			FEE	12-17-63 D2291-921
C2676	THOM			FEE	4-2-64 D2418-3
C2677	CLARE			FEE	3-31-64 D2414-252
C2678	JOHNSON			FEE	6-17-64 D2512-817
C2679	SLEIGH			FEE	4-3-64 D2419-977
C2680	COMO			FEE	12-9-64 D2726-113
C2681	ANDERSON			FEE	4-28-64 D2450-274
C2682	BETZ			FEE	10-25-64 D2233-37
C2683	HOLUBICZKO			FEE	10-17-63 D2222-561
C2684	KING			FEE	6-1-64 D2492-242
C2685	SECURITY FIRST NATIONAL BANK			FEE	2-28-64 D2376-235
C2686	KALOS			FEE	4-28-64 D2450-238
C2687	REID			FEE	3-16-64 D2395-567
C2688	SUMNER			FEE	7-28-64 D2565-823
C2689	SKINNER			FEE	7-27-63 D2307-364
C2691	HAY			FEE	1-2-64 D2307-663
C2693	RUBINO			FEE	11-20-63 D2262-336
C2694	BEACH			FEE	10-16-63 D2220-978
C2695	LAKE			FEE	1-2-64 D2307-674
C2696	OSBORN			FEE	6-5-64 D2498-677
C2697	MOORE			FEE	5-12-64 D2467-811
C2698	SECURITY FIRST NATIONAL BANK			FEE	9-8-64 D2618-848
C2699	LYON			FEE	5-26-64 D2484-847
C2700	GOULMASHIAN			FEE BY COND	7-12-63 D2973-565
C2701	SOLSTEN			FEE	6-9-64 D2502-156
C2702	STOWELL			FEE	5-27-64 D2486-543
C2703	MONALY			FEE	5-15-64 D2472-677
C2704	ADDINGTON			FEE	3-17-64 D2397-371
C2705	PONIRELLI			FEE	6-16-64 D2511-243
C2706	FRIZZELL			FEE	10-25-63 D2233-51
C2707	SCHRODER			FEE	11-5-63 D2245-70
C2708	LUND			FEE	2-3-64 D2345-226
C2709	RUSSELL			FEE	12-9-63 D2281-647
C2710	MCCOY			FEE	9-10-63 D2174-901
C2711	MANILOFF			FEE	11-15-63 D2296-969
C2712	HASSAN			FEE	9-24-63 D2192-910
C2713	MCSTAY			FEE	10-1-63 D2201-705
C2714	MCCRACKEN			FEE	12-17-63 D2291-926
C2715	LUDWICK			FEE	9-27-63 D2198-52
C2716	ABEL			FEE	4-1-64 D2416-161
C2717	FRUDENBERG			FEE	7-31-64 D2571-241

PARCEL NO	GRANTOR OR GRANTEE	AREA *		INST	RECORDING DATA DATE OR
		ACQ	EXCESS TOTAL		
C2661	POWELL			FEE	6-30-64 D2529-284
C2662	SCHUMACHER			FEE	10-1-63 D2201-713
C2663	HUGHES			FEE	9-1-64 D2611-500
C2664	SAULE			FEE	9-19-63 D2187-847
C2665	LOUGHFEED			FEE	9-24-63 D2192-907
C2666	WINSLOW			FEE	10-24-64 D2231-391
C2667	BALLARD			FEE	6-24-64 D2521-685
C2668	TUFTS			FEE	11-12-64 D2695-364
C2669	D.G.H. INC			FEE	5-6-64 D2461-67
C2670	SHEA			FEE	3-11-64 D2390-592
C2671	OAKDEN			FEE	3-31-64 D2414-267
C2672	KOEPKE			FEE	10-24-63 D2231-397
C2673	TERRY			FEE	10-2-63 D2203-547
C2674	KLEMPNER			FEE	12-19-63 D2295-62
C2675	DICK			FEE	12-17-63 D2291-921
C2676	THOM			FEE	4-2-64 D2418-3
C2677	CLARE			FEE	3-31-64 D2414-252
C2678	JOHNSON			FEE	6-17-64 D2512-817
C2679	SLEIGH			FEE	4-3-64 D2419-977
C2680	COMO			FEE	12-9-64 D2726-113
C2681	ANDERSON			FEE	4-28-64 D2450-274
C2682	BETZ			FEE	10-25-64 D2233-37
C2683	HOLUBICZKO			FEE	10-17-63 D2222-561
C2684	KING			FEE	6-1-64 D2492-242
C2685	SECURITY FIRST NATIONAL BANK			FEE	2-28-64 D2376-235
C2686	KALOS			FEE	4-28-64 D2450-238
C2687	REID			FEE	3-16-64 D2395-567
C2688	SUMNER			FEE	7-28-64 D2565-823
C2689	SKINNER			FEE	7-27-63 D2307-364
C2691	HAY			FEE	1-2-64 D2307-663
C2693	RUBINO			FEE	11-20-63 D2262-336
C2694	BEACH			FEE	10-16-63 D2220-978
C2695	LAKE			FEE	1-2-64 D2307-674
C2696	OSBORN			FEE	6-5-64 D2498-677
C2697	MOORE			FEE	5-12-64 D2467-811
C2698	SECURITY FIRST NATIONAL BANK			FEE	9-8-64 D2618-848
C2699	LYON			FEE	5-26-64 D2484-847
C2700	GOULMASHIAN			FEE BY COND	7-12-63 D2973-565
C2701	SOLSTEN			FEE	6-9-64 D2502-156
C2702	STOWELL			FEE	5-27-64 D2486-543
C2703	MONALY			FEE	5-15-64 D2472-677
C2704	ADDINGTON			FEE	3-17-64 D2397-371
C2705	PONIRELLI			FEE	6-16-64 D2511-243
C2706	FRIZZELL			FEE	10-25-63 D2233-51
C2707	SCHRODER			FEE	11-5-63 D2245-70
C2708	LUND			FEE	2-3-64 D2345-226
C2709	RUSSELL			FEE	12-9-63 D2281-647
C2710	MCCOY			FEE	9-10-63 D2174-901
C2711	MANILOFF			FEE	11-15-63 D2296-969
C2712	HASSAN			FEE	9-24-63 D2192-910
C2713	MCSTAY			FEE	10-1-63 D2201-705
C2714	MCCRACKEN			FEE	12-17-63 D2291-926
C2715	LUDWICK			FEE	9-27-63 D2198-52
C2716	ABEL			FEE	4-1-64 D2416-161
C2717	FRUDENBERG			FEE	7-31-64 D2571-241

STATE OF CALIFORNIA
 TRANSPORTATION AGENCY DEPARTMENT OF PUBLIC WORKS
DIVISION OF HIGHWAYS

(OLD-07-LA-161)
R/W MAP
 NO. F-1164-8
 07-LA-134-8.9

ISSUE DATE _____ DATE _____
 RWPE _____ SR _____

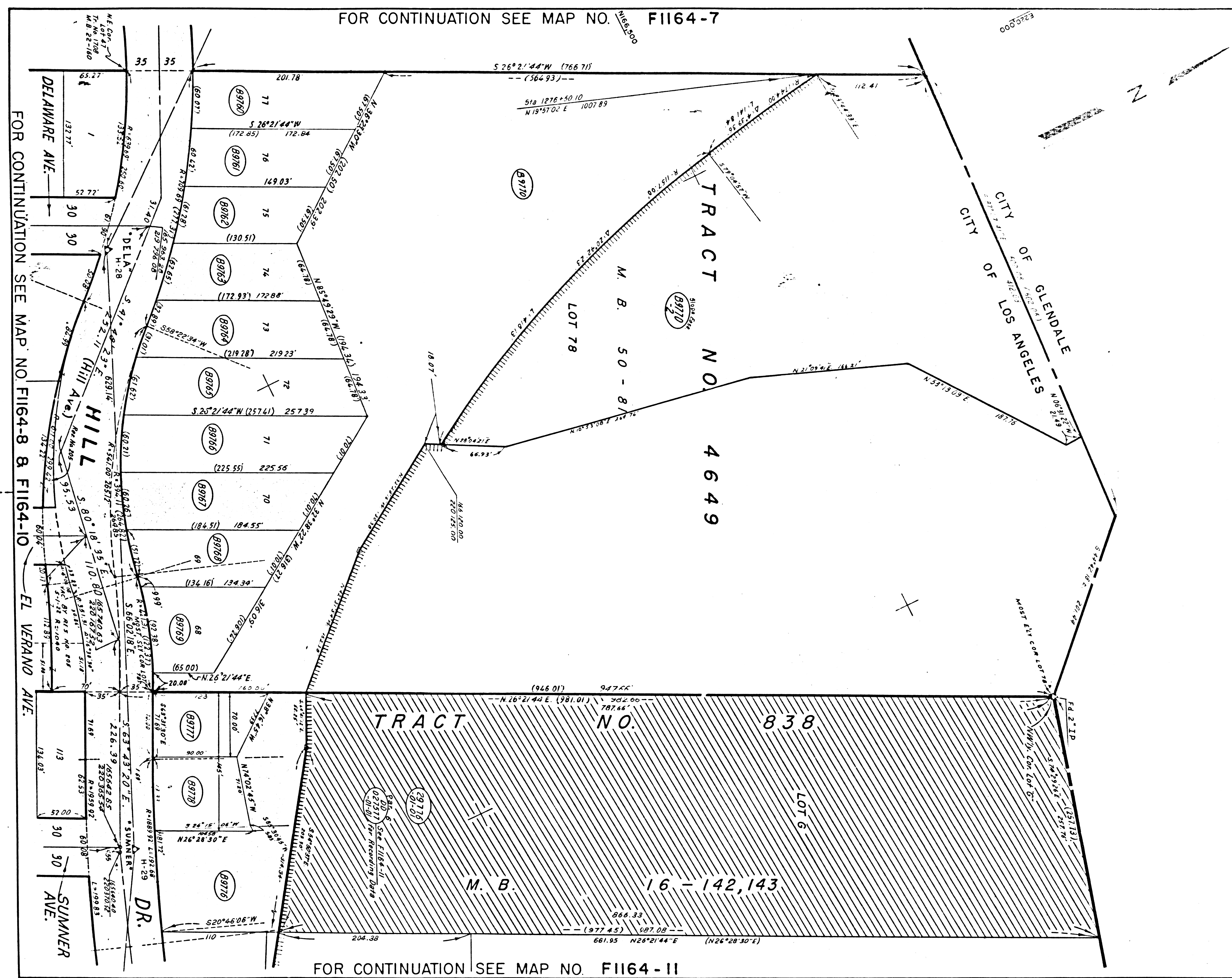
LEGEND:
 [Symbol] ACCESS DENIED [Symbol] EXCLUDES STREET AREA
 * AREA IN SQUARE FEET UNLESS OTHERWISE NOTED
 () PREVIOUS RECORD DATA

F.M. 21583-9

FM 21583-9

F1164-8 & F1164-9

TRACED BY: L.R.A.



FOR CONTINUATION SEE MAP NO. F1164-8 & F1164-10

FOR CONTINUATION SEE MAP NO. F1164-7

FOR CONTINUATION SEE MAP NO. F1164-11

STATE FEDERAL PROJECT NO. DATE
 COUNTY BUREAU OF PUBLIC ROADS DATE

PARCEL NO.	GRANTOR OR GRANTEE	AREA * AC	EXCESS	TOTAL	INST.	RECORDING DATA	
						DATE	OR
B9763	CRUICK				FEE	5-31-63	02042-20
B9761	PRUETT				FEE	5-10-63	02023-914
B9762	MARKSON				FEE	1-4-65	02151-473
B9763	MESSENGER				FEE	3-12-63	02025-803
B9764	PETRUCC				FEE	6-10-63	02028-365
B9765	PRUITT				FEE	6-10-63	02027-565
B9766	WOLCOTT				FEE	3-25-63	02044-175
B9767	SMALDINO				FEE	10-31-63	02249-839
B9769	MC VEY				FEE	8-6-63	02133-604
B9769	PINCKNEY				FEE	10-24-63	02231-359
B9770	ANDRIES				FEE	7-18-65	03370-121
B9770-2	ANDRIES			SLOPE	4-5	7-18-65	03370-121
B9776	SULLIVAN	4785 AC			FEE	5-9-63	02222-248
B9777	NELSON				FEE	12-13-63	01288-452
B9778	SPICE				FEE	11-26-63	02267-494

ISSUE DATE _____

STATE OF CALIFORNIA
 TRANSPORTATION DEPARTMENT OF
 AGENCY PUBLIC WORKS
 DIVISION OF HIGHWAYS

(OLD-07-LA-161)
R/W MAP
 NO. F1164-9
 07-LA-134-9.0

50 0 50 DATE _____
 RWPE SR.

LEGEND: ACCESS DENIED EXCLUDES STREET AREA
 * AREA IN SQUARE FEET UNLESS OTHERWISE NOTED
 () PREVIOUS RECORD DATA

TRACED BY S.J.M.

F.M. 21583-10

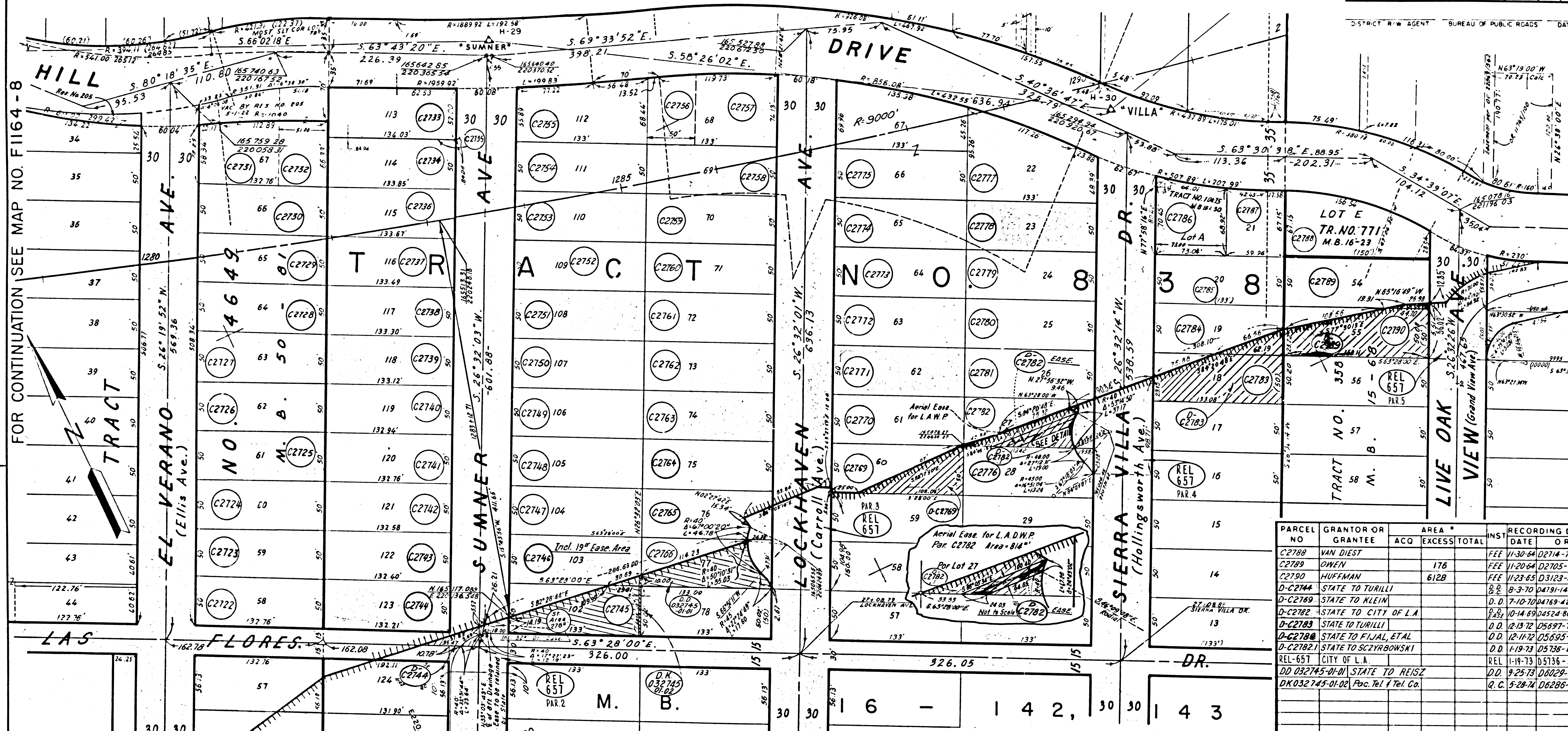
FM 21583-10

F1164-2

FOR CONTINUATION SEE MAP NO. F1164-9

FOR CONTINUATION SEE MAP NO. F1164-11

STATE OF CALIF. FEDERAL PROJECT NO. DISTRICT R/W AGENT BUREAU OF PUBLIC ROADS DATE



PARCEL NO.	GRANTOR OR GRANTEE	AREA * ACQ EXCESS TOTAL	RECORDING DATA DATE OR	PARCEL NO.	GRANTOR OR GRANTEE	AREA * ACQ EXCESS TOTAL	RECORDING DATA DATE OR	PARCEL NO.	GRANTOR OR GRANTEE	AREA * ACQ EXCESS TOTAL	RECORDING DATA DATE OR	PARCEL NO.	GRANTOR OR GRANTEE	AREA * ACQ EXCESS TOTAL	RECORDING DATA DATE OR
C2722	CARRUTH		FEE 7-24-64 D2562-139	C2739	ZUNDEL		FEE 4-27-64 D2448-399	C2754	CUSIMANO		FEE 8-17-64 D2592-72	C2712	BLOOMFIELD		FEE 7-8-64 D2540-662
C2723	LEDBETTER		FEE 5-23-64 D2483-282	C2739	STEUDEL		FEE 5-12-64 D2467-768	C2755	EARL		FEE 12-13-64 D2288-405	C2713	COFFEY		FEE 8-21-64 D2599-79
C2724	STEPHAN		FEE 7-2-64 D2533-754	C2740	MARSEE		FEE 5-28-64 D2484-827	C2756	MC CURRY		FEE 1-20-64 D2328-458	C2714	HARPER		FEE 7-28-64 D2565-795
C2725	THOMAS		FEE 5-19-64 D2476-181	C2741	BOOTH		FEE 5-1-64 D2455-877	C2757	MAZEWSKI		FEE 1-7-64 D2312-964	C2715	PERRA		FEE 9-1-64 D2611-503
C2726	GUNDERSON		FEE 5-19-64 D2476-155	C2742	ACTON		FEE 5-19-64 D2476-189	C2758	EARLINE		FEE 2-13-64 D2356-539	C2716	SCZYBROWSKI		FEE 12-6-66 D3499-385
C2727	HUTTL		FEE 7-2-64 D2533-781	C2743	NAUSHA		FEE 11-19-64 D2704-186	C2759	ANGERMANN		FEE 5-19-64 D2476-186	C2717	STARIGE		FEE 2-11-64 D2354-767
C2728	NELSON		FEE 1-17-64 D2326-801	C2744	MULLIO		FEE 1-21-65 D2772-19	C2760	FRIS		FEE 3-9-64 D2386-998	C2718	MC HUGH		FEE 7-27-64 D2564-64
C2729	PARRISH		FEE 2-26-64 D2372-497	C2745	HATTS	4789	FEE 11-30-64 D2714-724	C2761	JONES		FEE 7-7-64 D2539-61	C2719	GILBOY		FEE 9-18-64 D2632-81
C2730	RICKER		FEE 9-27-63 D2198-54	C2746	BRINKMAN	145	FEE 11-20-64 D2705-772	C2762	OTERO		FEE 7-6-64 D2537-583	C2720	FISHER		FEE 1-8-65 D2757-551
C2731	MORSE		FEE 1-3-64 D2309-281	C2747	NEES		FEE 7-1-64 D2531-787	C2763	STAPP		FEE 8-3-64 D2573-724	C2721	MUNDSCHEK		FEE 11-24-64 D2709-174
C2732	NIES		FEE 5-1-64 D2455-891	C2748	MCDEARMON		FEE 6-19-64 D2516-348	C2764	DE FIORE		FEE 9-1-65 D2035-265	C2722	BAKER	2374	FEE 12-24-64 D2743-783
C2733	M.A. OLSON		FEE 3-12-64 D2829-354	C2749	BRAVER		FEE 7-10-64 D2544-161	C2765	SMITH		FEE 12-3-64 D2719-948	C2723	LAWLEY	5722	FEE 11-14-65 D2783-937
C2734	INGOLIA		FEE 1-2-64 D2307-672	C2750	EVANS		FEE 7-13-64 D2548-520	C2766	DUFFY	3565	FEE 7-30-65 D2996-331	C2724	FAULKNER	738	FEE 11-19-64 D2704-182
C2735	C.P. OLSON		FEE 3-15-65 D2831-281	C2751	CORSEY		FEE 2-13-64 D2356-552	C2769	PEDLOW		FEE 11-30-64 D2714-737	C2725	THOMAS		FEE 12-15-64 D2732-675
C2736	NICHOLSON		FEE 7-31-64 D2571-256	C2752	GAFFANEY		FEE 1-14-64 D2321-681	C2770	VANAGS		FEE 1-5-65 D2752-846	C2726	ADAMSON		FEE 7-6-64 D2573-534
C2737	CARR		FEE 12-1-64 D2716-458	C2753	RINI		FEE 3-28-64 D2372-682	C2771	OLIVER		FEE 10-26-64 D2676-50	C2727	SNOW		FEE 11-25-64 D2710-843

PARCEL NO.	GRANTOR OR GRANTEE	AREA * ACQ EXCESS TOTAL	RECORDING DATA DATE OR
C2789	VAN DIEST		FEE 11-30-64 D2714-735
C2789	OWEN	178	FEE 11-20-64 D2705-754
C2790	HUFFMAN	6128	FEE 11-23-65 D3123-008
D-C2744	STATE TO TURILLI		B.D. 8-3-70 D4791-146/148
D-C2789	STATE TO KLEIN		D.D. 7-10-70 D4769-421/421
D-C2782	STATE TO CITY OF LA		D.D. 10-14-69 D4524-86/870
D-C2783	STATE TO TURILLI		D.D. 12-13-72 D5697-752
D-C2788	STATE TO FIJAL, ETAL		D.D. 12-11-72 D5695-251
D-C2782/1	STATE TO SCZYBROWSKI		D.D. 1-19-73 D5736-137
REL-657	CITY OF L.A.		REL 1-19-73 D5736-59
DD 032745-01-01	STATE TO REISZ		D.D. 9-25-73 D6029-634
DK 032745-01-02	FOR TOL. CO.		Q.C. 5-28-74 D6286-355

STATE OF CALIFORNIA
TRANSPORTATION AGENCY
DEPARTMENT OF PUBLIC WORKS
DIVISION OF HIGHWAYS

(OLD - 07-LA-161)
R/W MAP
NO. F1164-10
07-LA-134-9.1

50' 0' 50'

DATE _____
SR. _____

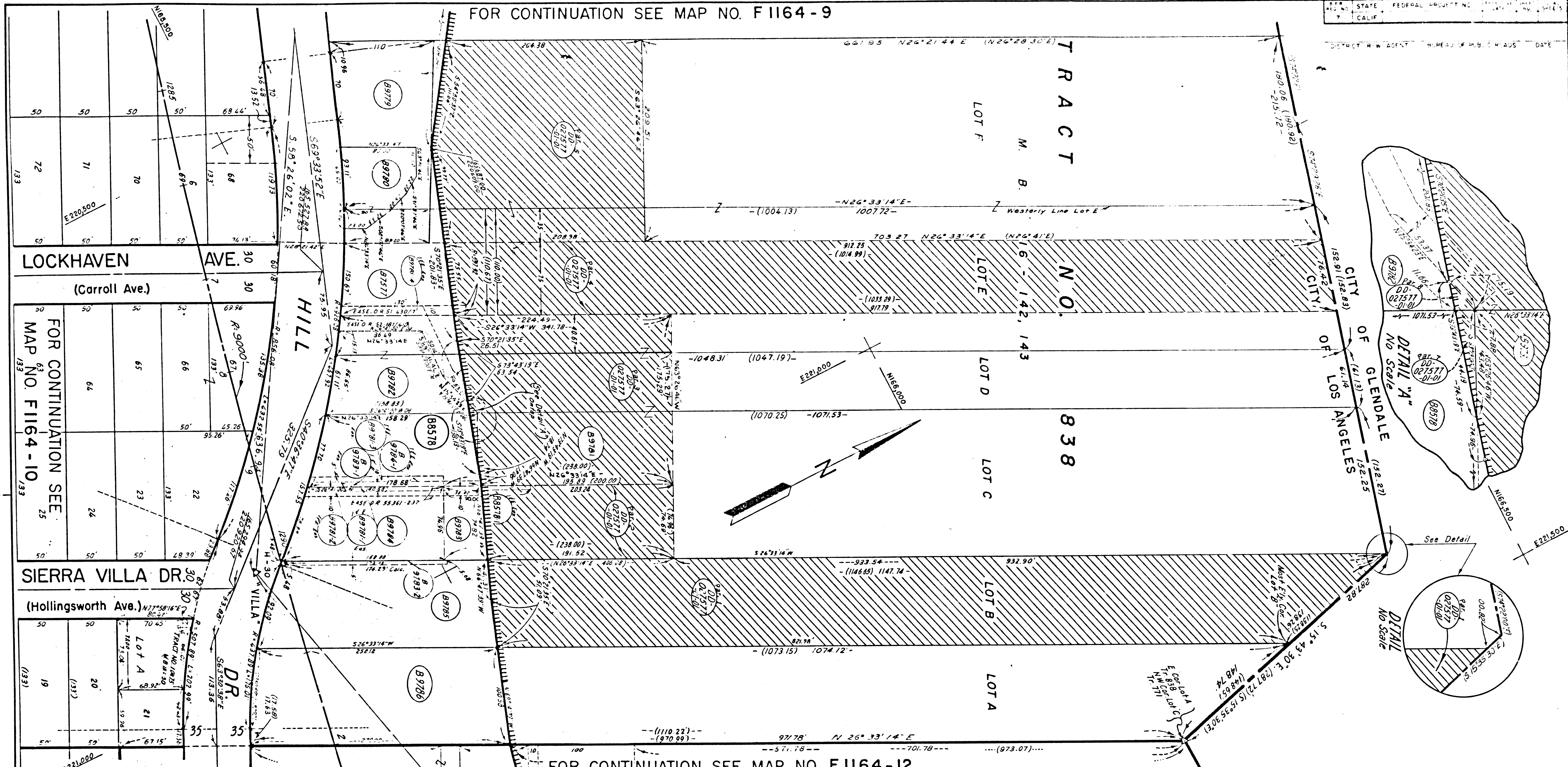
LEGEND:
ACCESS DENIED
EXCLUDES STREET AREA
AREA IN SQUARE FEET UNLESS OTHERWISE NOTED
PREVIOUS RECORD DATA

F.M. 21583-11

F.M. 21583-11

F1164-2

TRACED BY S.J.M.



PARCEL NO	GRANTOR OR GRANTEE	AREA *			INST	RECORDING DATA		PARCEL NO	GRANTOR OR GRANTEE	AREA *			INST	RECORDING DATA		PARCEL NO	GRANTOR OR GRANTEE	AREA *			INST	RECORDING DATA		ISSUE DATE
		ACQ	EXCESS	TOTAL		DATE	OR			ACQ	EXCESS	TOTAL		DATE	OR			ACQ	EXCESS	TOTAL		DATE	OR	
87577	CAROLAN		1.578	AC	FEE	5-28-62	D1828-828	89785	MC ARTHUR		1.815	AC	FEE	11-15-63	D2256-887									
88578	FORAN		177		FEE	3-26-62	D1555-823	89786	CRUZ				FEE	3-12-65	D2829-544									
88578-1	FORAN				ING-EGR EASE	3-26-62	D1555-823	DD 027577-DI-DI	STATE TO ANDRIES				DD	1-20-73	D3334-865									
89779	MESSINA		4.712		FEE	2-23-65	D2807-404																	
89780	EATON				FEE	11-27-64	D2712-932																	
89781	HOBART		36.612		FEE	1-5-65	D2752-823																	
89781-1	HOBART				ING-EGR EASE	1-5-65	D2752-823																	
89781-2	HOBART				ING-EGR EASE	1-5-65	D2752-823																	
89781-3	HOBART					1-5-65	D2752-823																	
89781-4	HOBART					1-5-65	D2752-823																	
89782	KONRAD		45		FEE BYCOND	6-11-65	D2937-750																	
89783	RICHTER		14.368		FEE	4-28-64	D2450-257																	
89783-1	RICHTER				ING-EGR EASE	4-28-64	D2450-257																	
89783-2	RICHTER				EASE	4-28-64	D2450-257																	
89784	JAMIESON				FEE	2-10-64	D2353-138																	
89784-1	JAMIESON				EASE	2-10-64	D2353-138																	

STATE OF CALIFORNIA
 TRANSPORTATION AGENCY
 DEPARTMENT OF PUBLIC WORKS
 DIVISION OF HIGHWAYS
 (OLD - 07 - LA - 161)
R/W MAP
 NO. F1164-11
 07-LA-134-9.1

50 0 50
 RWPE SR

LEGEND: ACCESS DENIED EXCLUDES STREET AREA
 AREA IN SQUARE FEET UNLESS OTHERWISE NOTED
 () PREVIOUS RECORD DATA

F.M. 21583-12

FM 21583-12

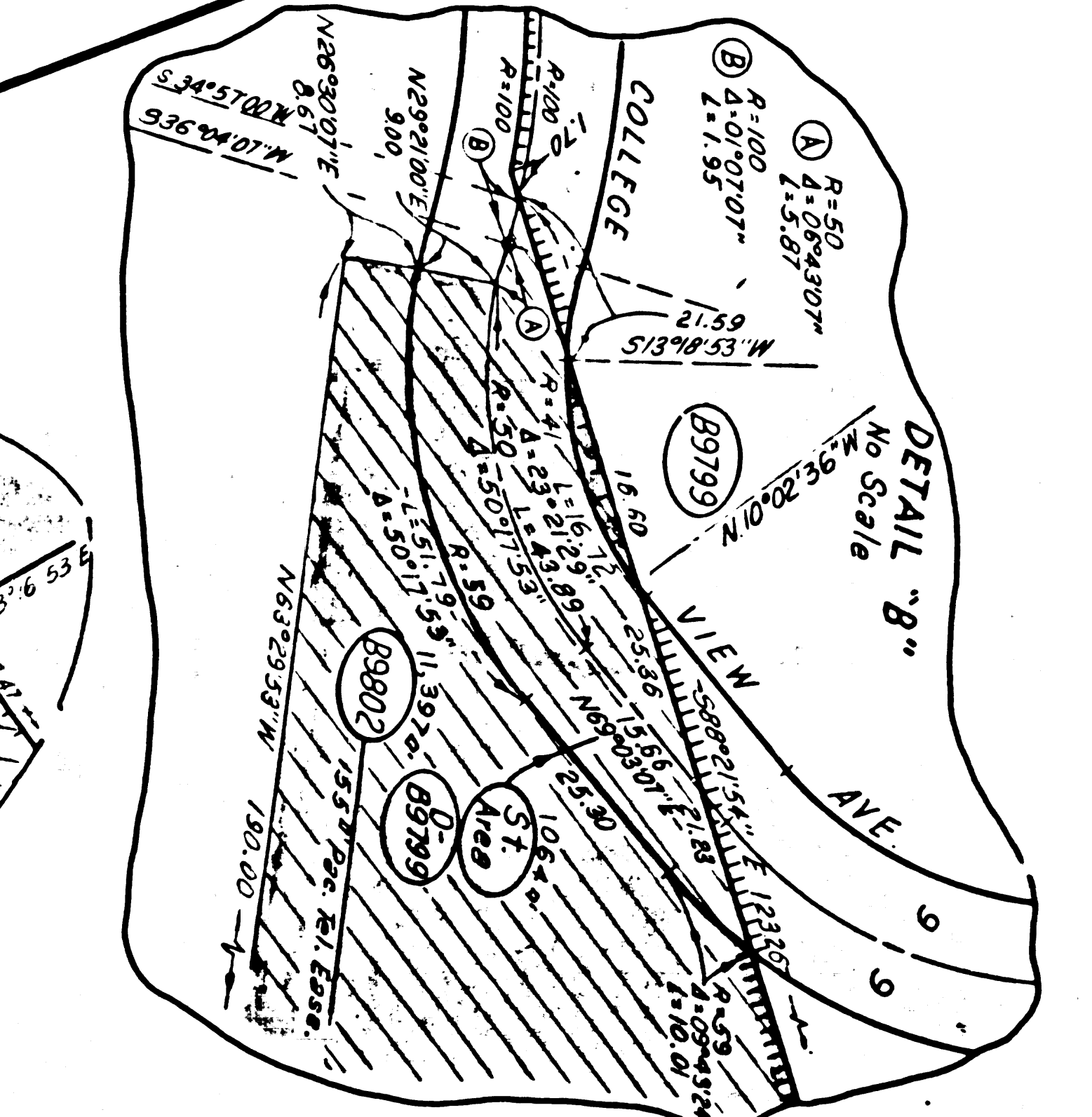
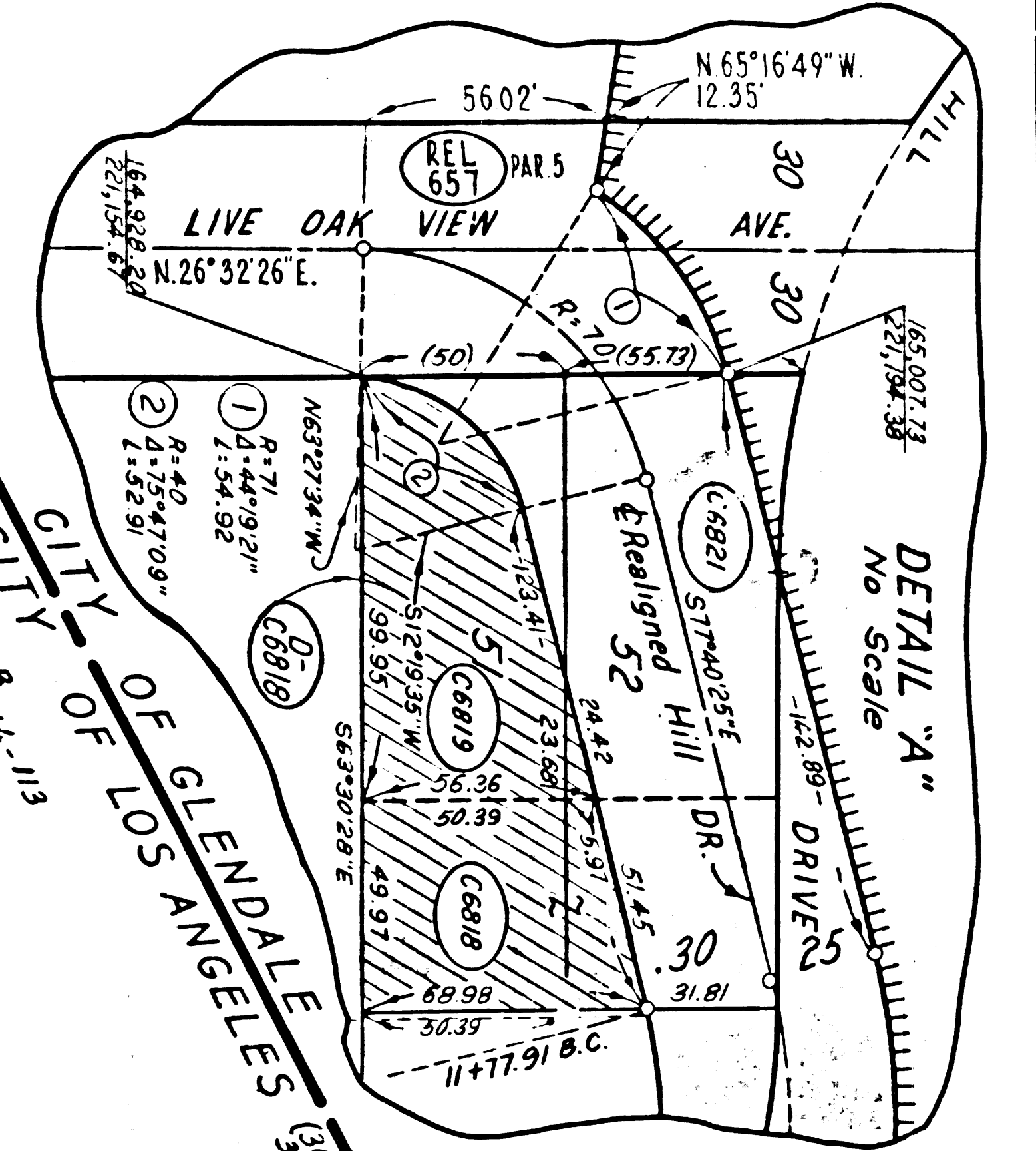
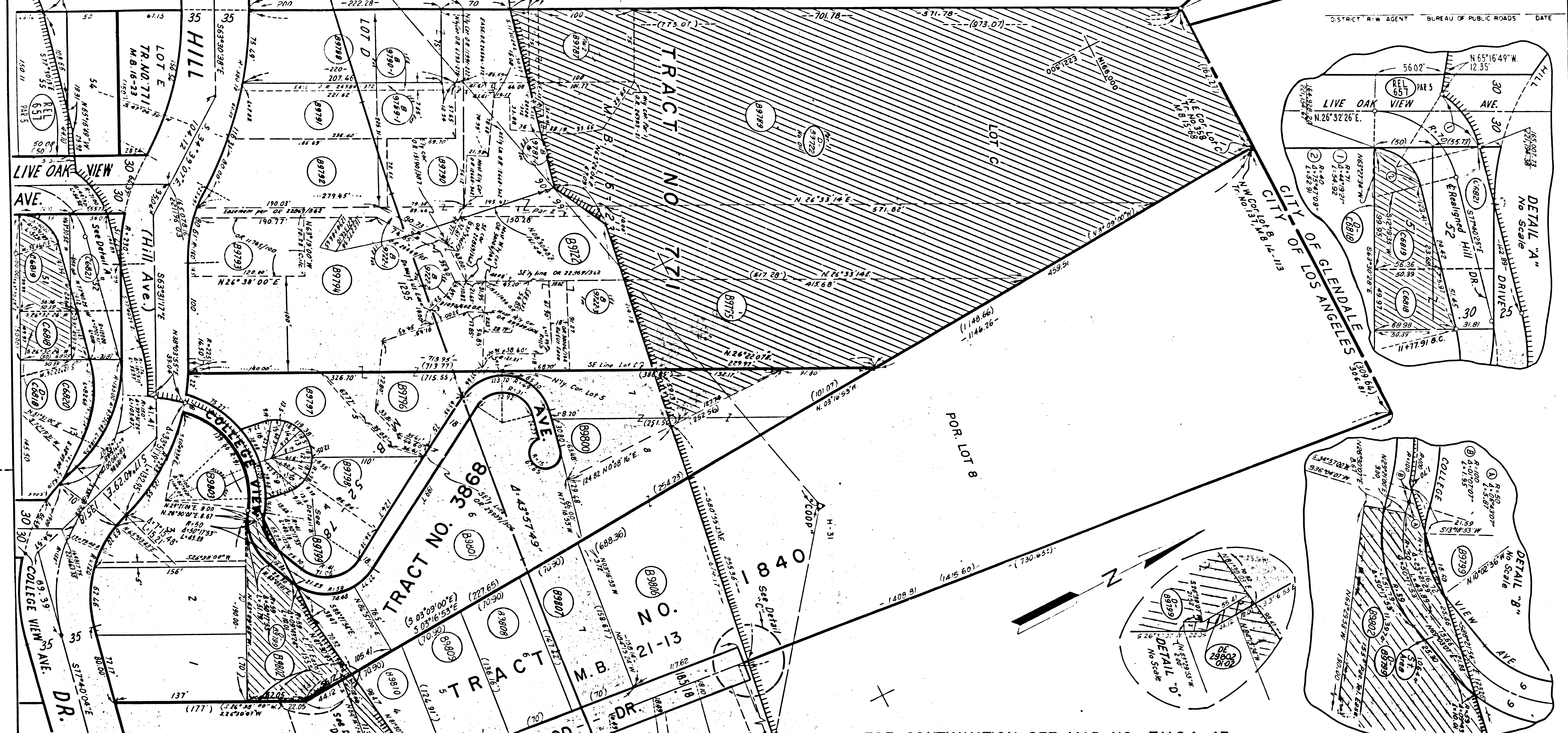
F1164-2

TRACED BY S.J.M.

FOR CONTINUATION SEE MAP NO. F1164-10

FOR CONTINUATION SEE MAP NO. F1164-11

STATE	FEDERAL PROJECT NO.	DATE
CALIF.		
DISTRICT R/W AGENT		BUREAU OF PUBLIC ROADS
		DATE



PARCEL NO.	GRANTOR OR GRANTEE	AREA *			INST.	RECORDING DATA	
		ACQ.	EXCESS	TOTAL		DATE	OR
B9722	I E GOODPASTURE				FEE	11-19-62	D1026-678
B9722-1	I E GOODPASTURE				FEE	11-19-62	D1026-678
B9722-2	I E GOODPASTURE				FEE	11-19-62	D1026-678
B9722-3	I E GOODPASTURE				FEE	11-19-62	D1026-678
B9787	E E PETERSEN				FEE	11-13-63	D2253-343
B9787-1	E E PETERSEN				FEE	11-13-63	D2253-343
B9787	L M PETERSEN				Q.C.	11-13-63	D2253-343
B9788	WEBB				FEE	10-18-63	D2224-303
B9788	M B PHILLIPS				FEE	3-2-64	D2378-492
B9788-1	M B PHILLIPS				FEE	3-2-64	D2378-492
B9790	R A WAREFIELD				FEE	12-2-63	D2273-124
B9790-1	R A WAREFIELD				FEE	12-2-63	D2273-124
B9791	GILLILAND				FEE	11-8-63	D2249-300
B9792	CHEVEY				FEE	3-4-64	D2371-924
B9793	ROBERTS				FEE	12-19-63	D2295-48
B9794	WINT				FEE	3-3-64	D2326-667

PARCEL NO.	GRANTOR OR GRANTEE	AREA *			INST.	RECORDING DATA		PARCEL NO.	GRANTOR OR GRANTEE	AREA *			INST.	RECORDING DATA		ISSUE DATE
		ACQ.	EXCESS	TOTAL		DATE	OR			ACQ.	EXCESS	TOTAL		DATE	OR	
B9785	HANSEN				FEE	5-11-64	D2468-84									
B9786	FERRY				FEE	11-28-63	D2271-146									
B9797	WILSON				FEE	3-4-64	D2381-350									
B9798	FULTS				FEE	11-5-63	D2245-79	C6818	ARSENAU		3133	FEE	10-22-65	D3030-115		
B9799	CLAY			9	FEE	6-15-64	D2509-482	C6819	CALABRO		4115	FEE	11-30-65	D3123-332		
B8800	EBRIGHT				FEE	8-21-62	D1729-872	C6820	SCZYBOWSKI			FEE BY COND.	10-25-67	D3809-597		
B8801	LOWES				FEE	3-31-64	D2416-262	C6821	YOUNG		70	FEE	10-25-68	D3881-741		
B8802	COOK			11,397	FEE	2-8-65	D2823-219	D-89722	STATE TO BLACKMORE PROPERTIES			D.D.	2-18-68	D3916-305		
B8803	LINDON				ALL ACC. RIGHT	3-9-60	R 2509-60	D-89721	STATE TO PATTERSON			D.D.	2-29-72	D5620-684		
B8804	BLACKMORE PROPERTIES				FEE	9-1-67	D3755-21	D-89789	STATE TO DEETMAN			D.D.	12-27-72	D5711-142		
B8807	SAVAGE				FEE	9-17-63	D2184-577	REL-657	CITY OF L.A.			REL	1-19-73	D5736-59		
B8808	CARTER				FEE	10-3-63	D2205-94	DE29802-0102	P.T.C.T.			DE	4-3-75	D6607-840		
B8809	SVOBODA				FEE	6-5-64	D2498-664									
B8910	BIRMAN				FEE	9-14-63	D2431-283									

STATE OF CALIFORNIA
 TRANSPORTATION DEPARTMENT OF
 AGENCY PUBLIC WORKS
 DIVISION OF HIGHWAYS
 (OLD - 07-LA-161)
R/W MAP
 NO. F1164-12
 07-LA-134-9.3

LEGEND: ACCESS DENIED EXCLUDES STREET AREA
 AREA IN SQUARE FEET UNLESS OTHERWISE NOTED
 PREVIOUS RECORD DATA

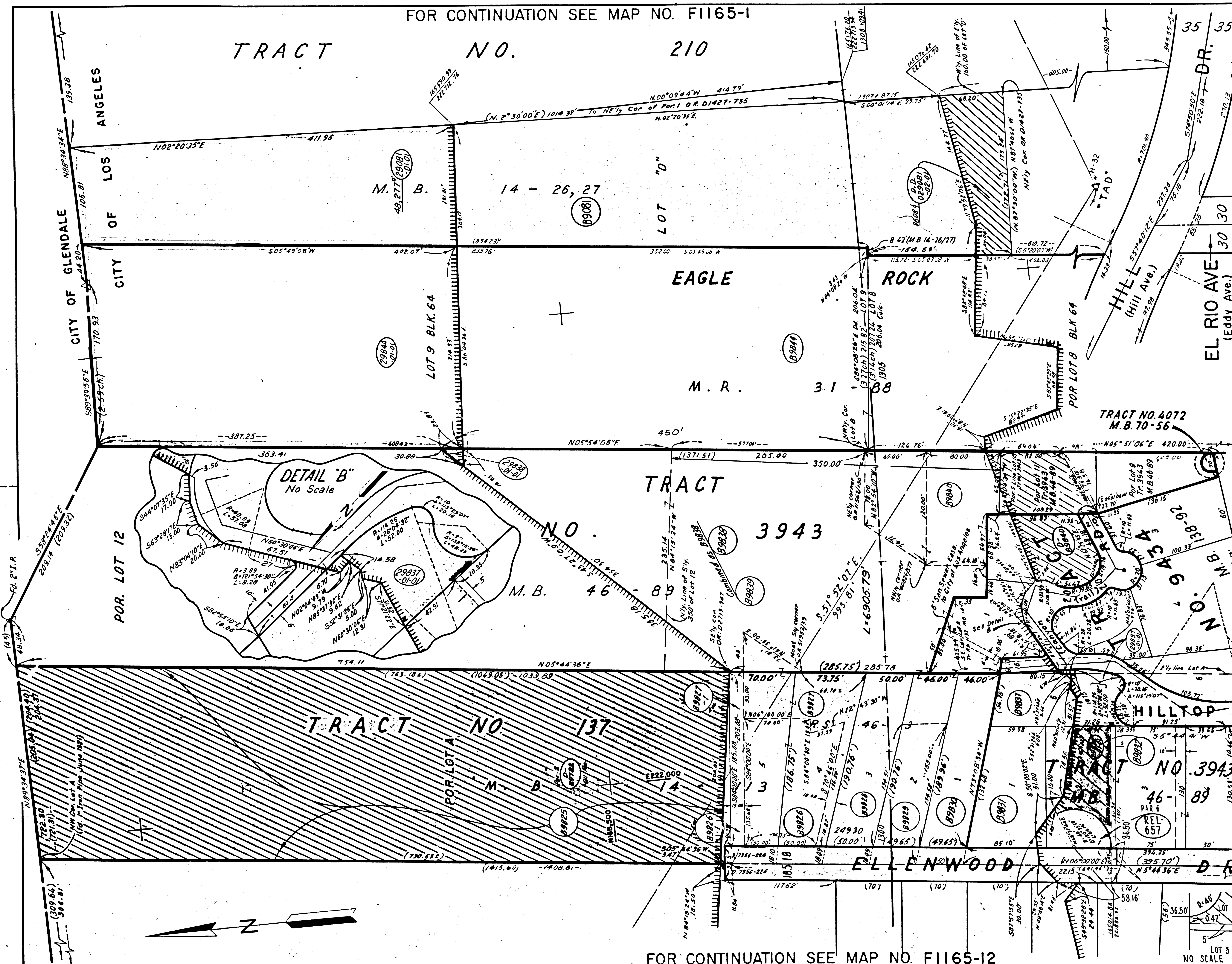
F.M. 21583-13

F1164-2

TRACED BY S.J.M.

FOR CONTINUATION SEE MAP NO. F1165-1

STATE	FEDERAL PROJECT NO.	EFFECTIVE DATE	SHEET NO.	TOTAL SHEETS
CALIF.			7	13



PARCEL NO.	GRANTOR OR GRANTEE	ACQ	EXCESS	TOTAL	INST	RECORDING DATE	OR
89081	MORREALE		56.885		FEE	4-30-62	D1598-631
89025	PERKS				FEE	12-3-64	D2719-947
89026	BERTEAUX				FEE	8-18-63	D2142-596
89026-1	BERTEAUX				ING-EGN EASE	8-18-63	D2142-596
89027	POWELL				FEE	12-9-63	D2281-626
89027-1	POWELL				ING-EGN EASE	12-9-63	D2281-626
89028	FRIST				FEE	7-15-63	D2102-916
89029	LINSON				FEE	7-16-63	D2104-897
89030	RAYNES				FEE	7-16-63	D2104-894
89031	CARLSEN				FEE	6-3-65	D2926-892
89032	EDWARDS	4736			FEE	6-1-65	D2823-864
89037	MERRITT	3215			FEE	1-3-64	D2309-253
89038	BRASCH	224			FEE	6-10-64	D2503-926
89040	MERRITT	11,402			FEE	1-2-64	D2307-665
89044	THOMPSON	1,937			FEE	7-14-66	D3365-444
DD 029081-02-01	STATE TO OWNER				D.D.	8-13-73	D5980-459
DD 290932-01-01	MEEK				R.D.	9-12-75	D6795-142
D-89722	STATE TO BLACKMORE PROPERTIES				DD	2-19-68	D3916-905
D-89840	STATE TO MERRITT				D.D.	9-29-72	D5620-83689
REL-657	CITY OF L.A.				REL	1-19-73	D5736-59

ISSUE DATE

STATE OF CALIFORNIA
TRANSPORTATION AGENCY
DEPARTMENT OF PUBLIC WORKS
DIVISION OF HIGHWAYS

(OLD-07-LA-161)
R/W MAP
NO. F1164-13
07-LA-134-9.4

50' 0' 50'

LEGEND:

- ACCESS DENIED
- AREA IN SQUARE FEET UNLESS OTHERWISE NOTED
- PREVIOUS RECORD DATA
- EXCLUDES STREET AREA

FOR CONTINUATION SEE MAP NO. F1165-12

F.M. 21583-14

FM 21583-14

F1164-2

TRACED BY S.J.M.