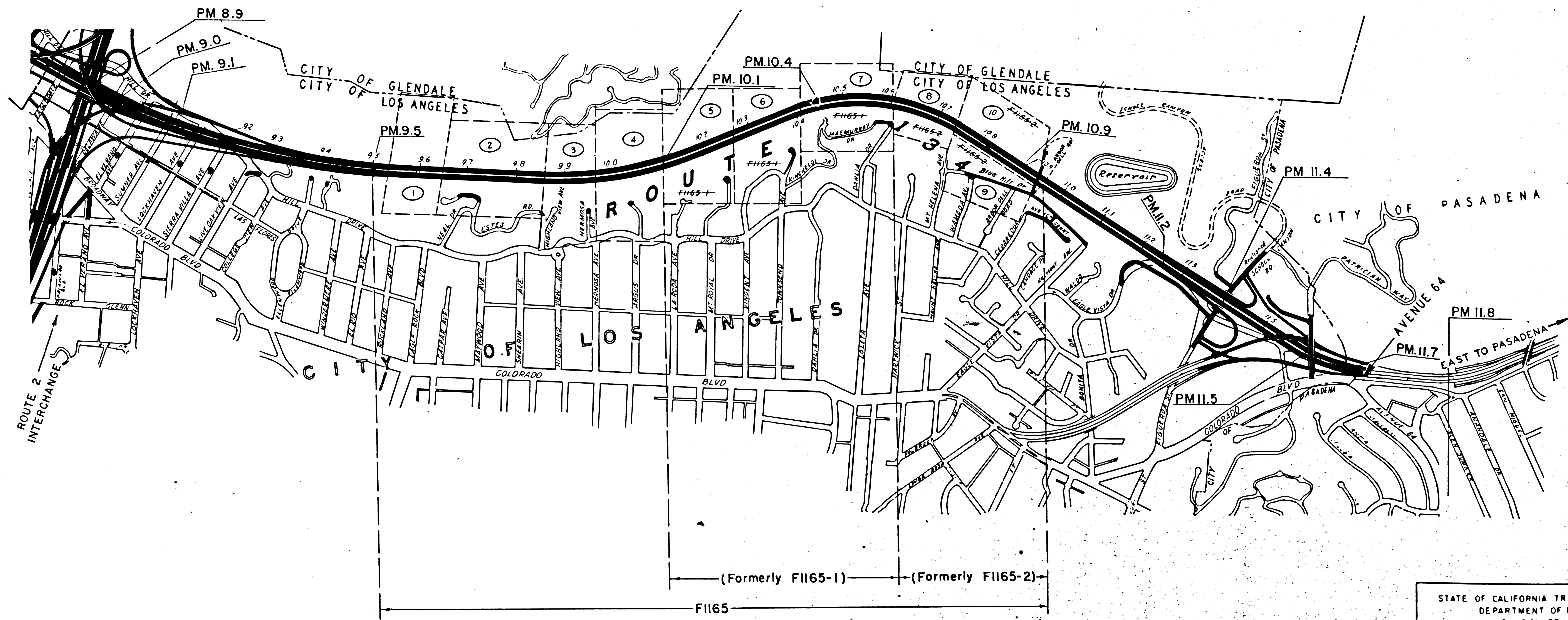
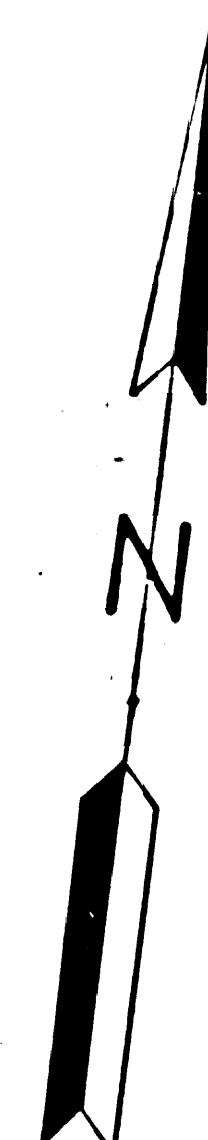


FII65 INDEX SHEET

- | | | | | | |
|---|---------|---|----------|---|---------|
| ① | FII65-1 | ④ | FII65-4 | ⑦ | FII65-7 |
| ② | FII65-2 | ⑤ | FII65-5 | ⑧ | FII65-8 |
| ③ | FII65-3 | ⑥ | FII65-6 | ⑨ | FII65-9 |
| | | ⑩ | FII65-10 | | |

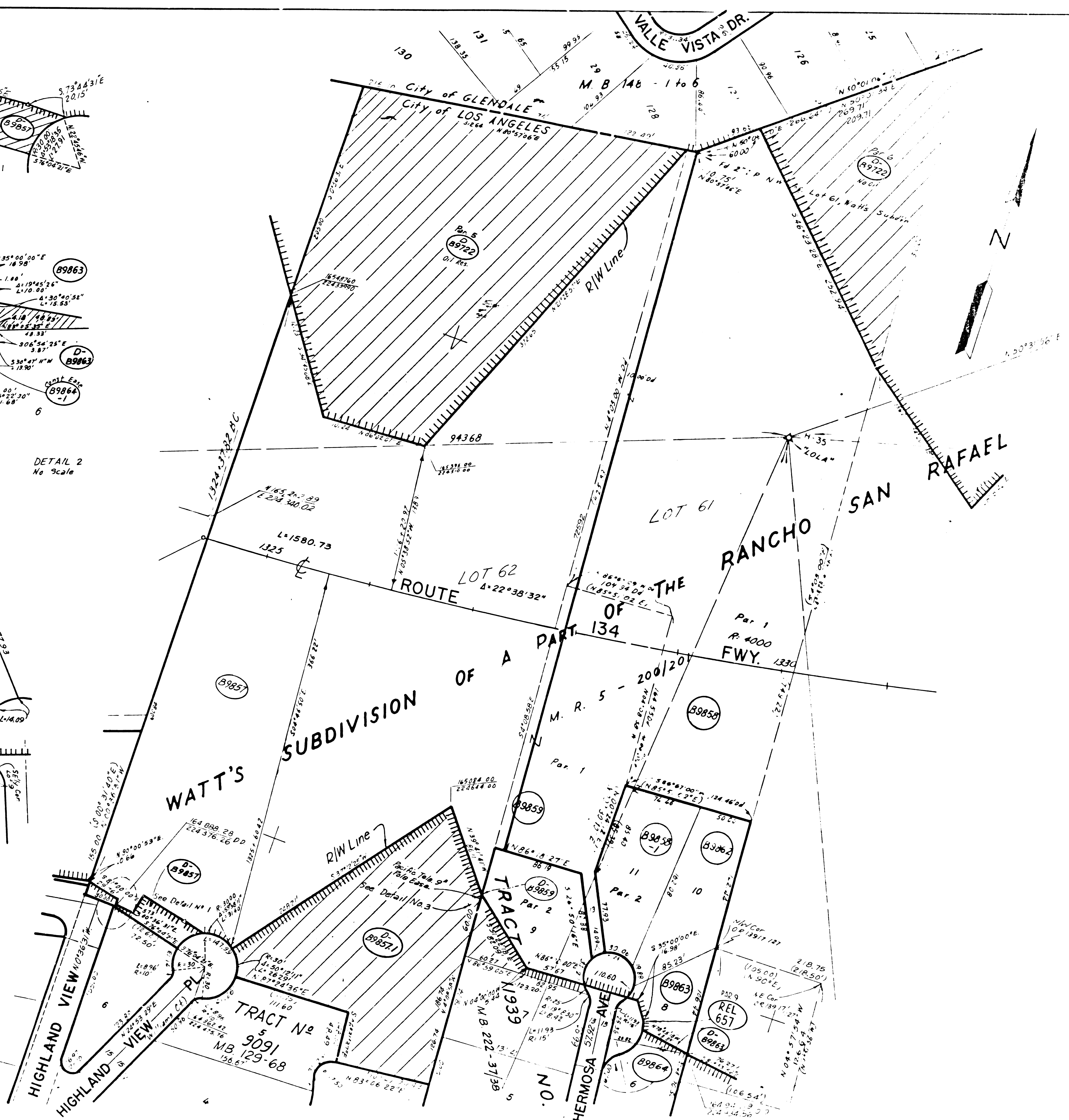
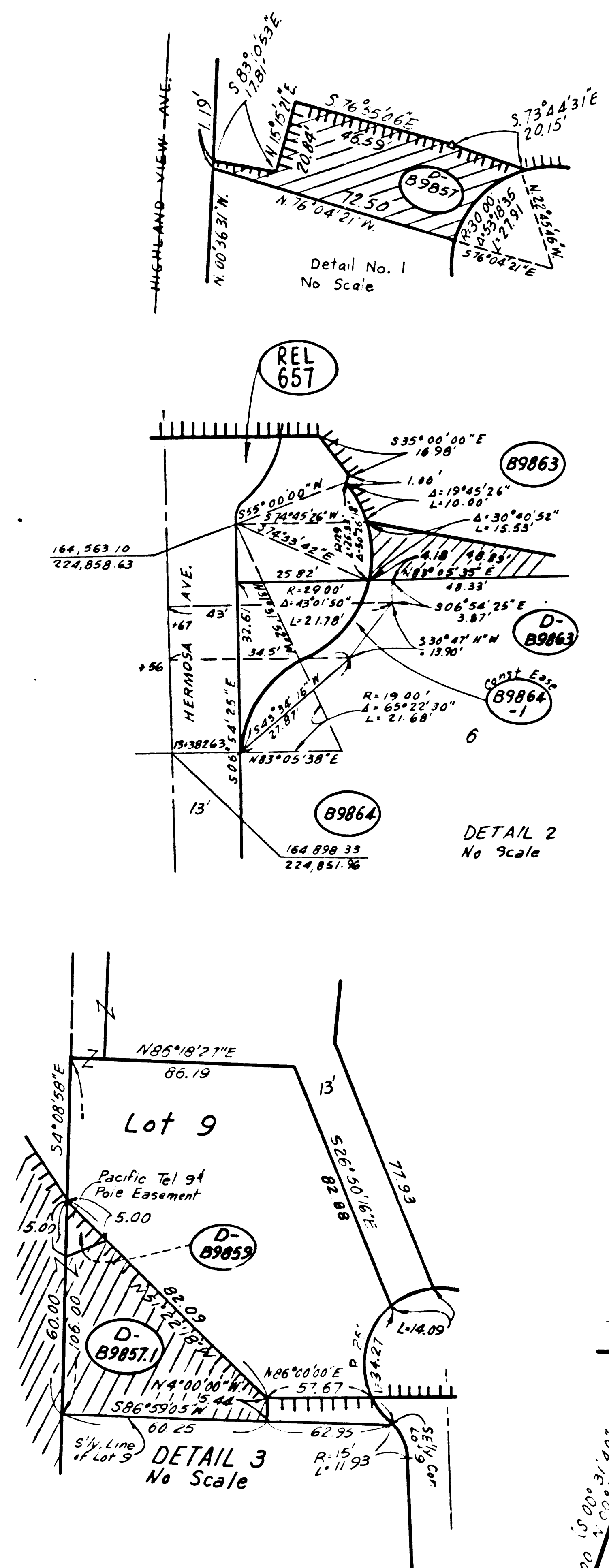


STATE OF CALIFORNIA TRANSPORTATION AGENCY
 DEPARTMENT OF PUBLIC WORKS
 DIVISION OF HIGHWAYS
 07-LA-134-95/10.9
 R/W INDEX MAP
 600 0 600
 No. FII65 DATE

F.M. 21584-1

FM 21584-1

FOR CONTINUATION SEE MAP NO. F1165-2

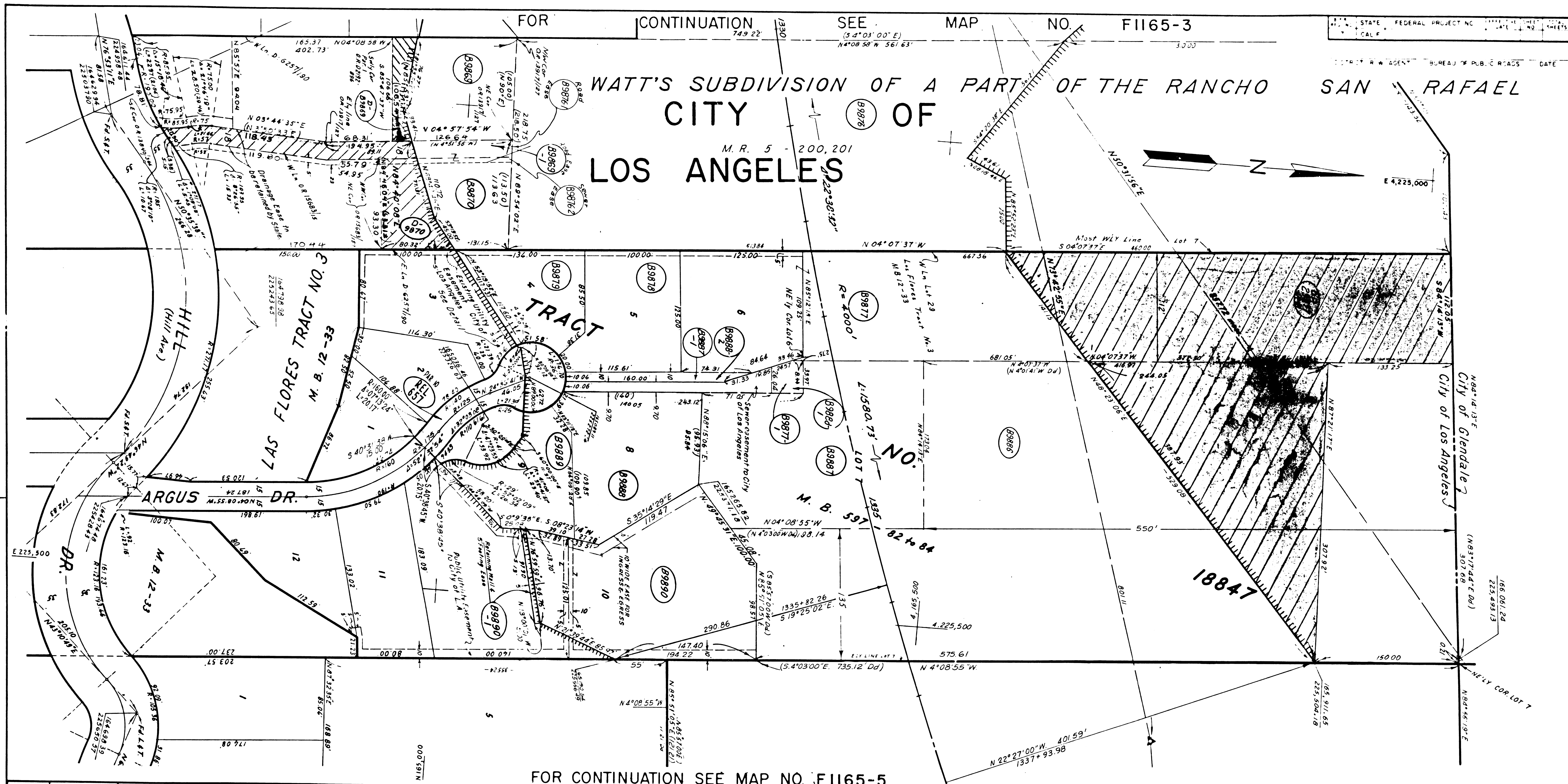


PARCEL NO.	GRANTOR OR GRANTEE	AREA ACQ.	EXCESS TOTAL	RECORDING DATE	BY
089722
089857
089843
089871
089859
REL 657

FOR CONTINUATION SEE MAP NO. F1165-4

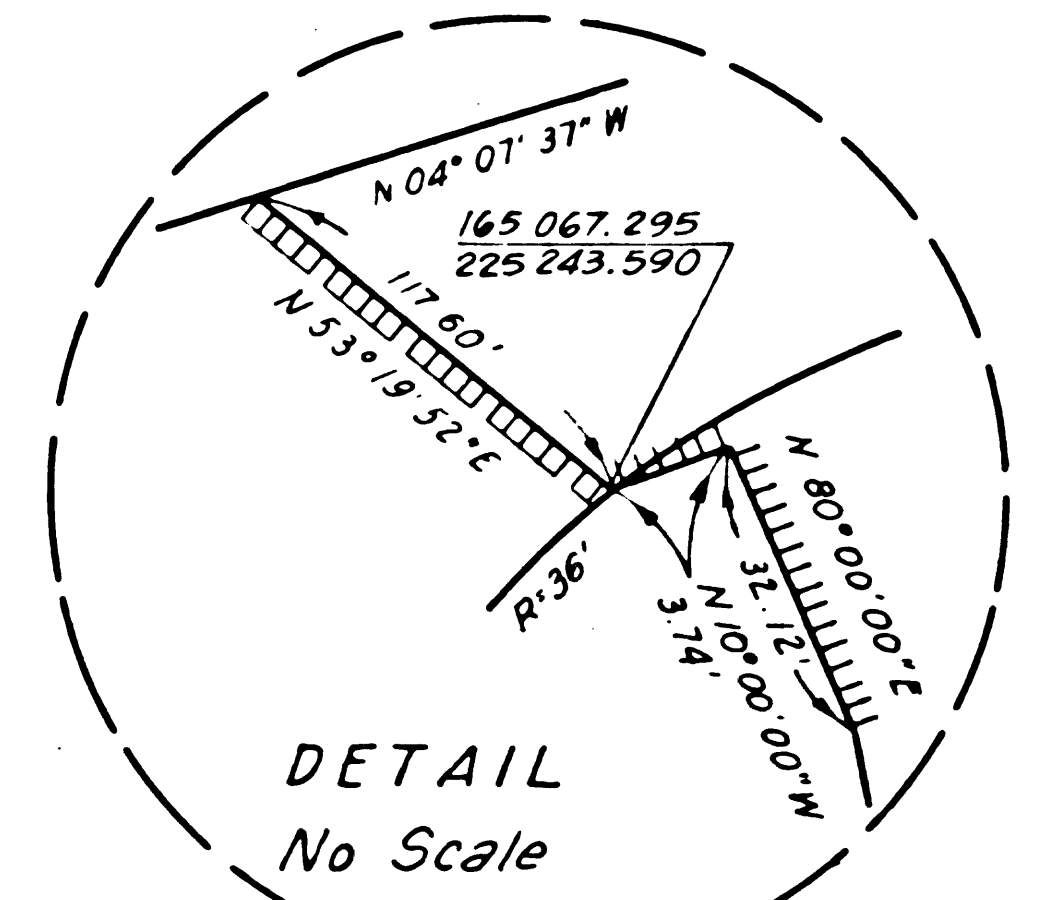
ISSUE DATE	STATE OF CALIFORNIA BUSINESS & TRANSPORTATION AGENCY DEPARTMENT OF TRANSPORTATION (OLD 07-LA-161) R/W MAP NO. F1165-3 07-LA-134-9.9
50 RWPE LAZAR	DATE 8-26-74 SR WEATHERHOLT
LEGEND: ...	

F.M. 21584-4



FOR CONTINUATION SEE MAP NO. F1165-5

PARCEL NO	GRANTOR OR GRANTEE	AREA * ACQ EXCESS TOTAL	INST	RECORDING DATA DATE OR	PARCEL NO	GRANTOR OR GRANTEE	AREA * ACQ EXCESS TOTAL	INST	RECORDING DATA DATE OR	PARCEL NO	GRANTOR OR GRANTEE	AREA * ACQ EXCESS TOTAL	INST	RECORDING DATA DATE OR
89869	THOMAS		FEE	9-24-63 D2192-896	89889	MUNDWILER		FEE	3-29-68 D3252-316					
89869-1	THOMAS	4,604	EASE	9-24-63 D2192-896	89890	DIANNITTO		FEE BY COND	4-28-68 D4351-859					
89870	O'HARN	3,929	FEE	2-3-64 D2345-239	89890-1	DIANNITTO		EASE BY COND	4-28-68 D4351-859					
89876	BOLGER		FEE	1-8-65 D2757-577				D.D.	2-10-70 D4819-963/964					
89876-1	BOLGER		EASE	1-8-65 D2757-577	0-89876	STATE TO DOHERTY		D.D.	11-17-72 D5471-865					
89876-2	BOLGER		EASE	1-8-65 D2757-577	REL-657	CITY OF L.A.		REL	1-19-73 D5136-59					
89877	BUMB ET AL	46,888	FEE BY COND	2-9-65 D2793-216	DD 29077-01-01	BOLGER		DD	5-30-75 D6671-779					
89877-1	BUMB ET AL		EASE BY COND	2-9-65 D2793-216										
89878	HOXIE		FEE	8-9-65 D. JOB-272										
89879	HALDER		FEE	9-29-65 D3063-980										
89886	GREEN	31,562	FEE	11-22-65 D3122-158										
89887	GREEN		FEE	11-22-65 D3122-155										
89887-1	GREEN		FEE	11-22-65 D3122-155										
89888	PADDON		FEE	11-8-62 D1816-516										
89888-1	PADDON		EASE	11-8-62 D1816-516										
89888-2	PADDON		EASE	11-8-62 D1816-516										



ISSUE DATE

STATE OF CALIFORNIA
TRANSPORTATION DEPARTMENT
AGENCY PUBLIC WORKS
DIVISION OF HIGHWAYS
(OLD 07-LA-161)
R/W MAP
NO. F1165-4
07-LA-134-10.1

50 0 50
RWPE. DATE SR

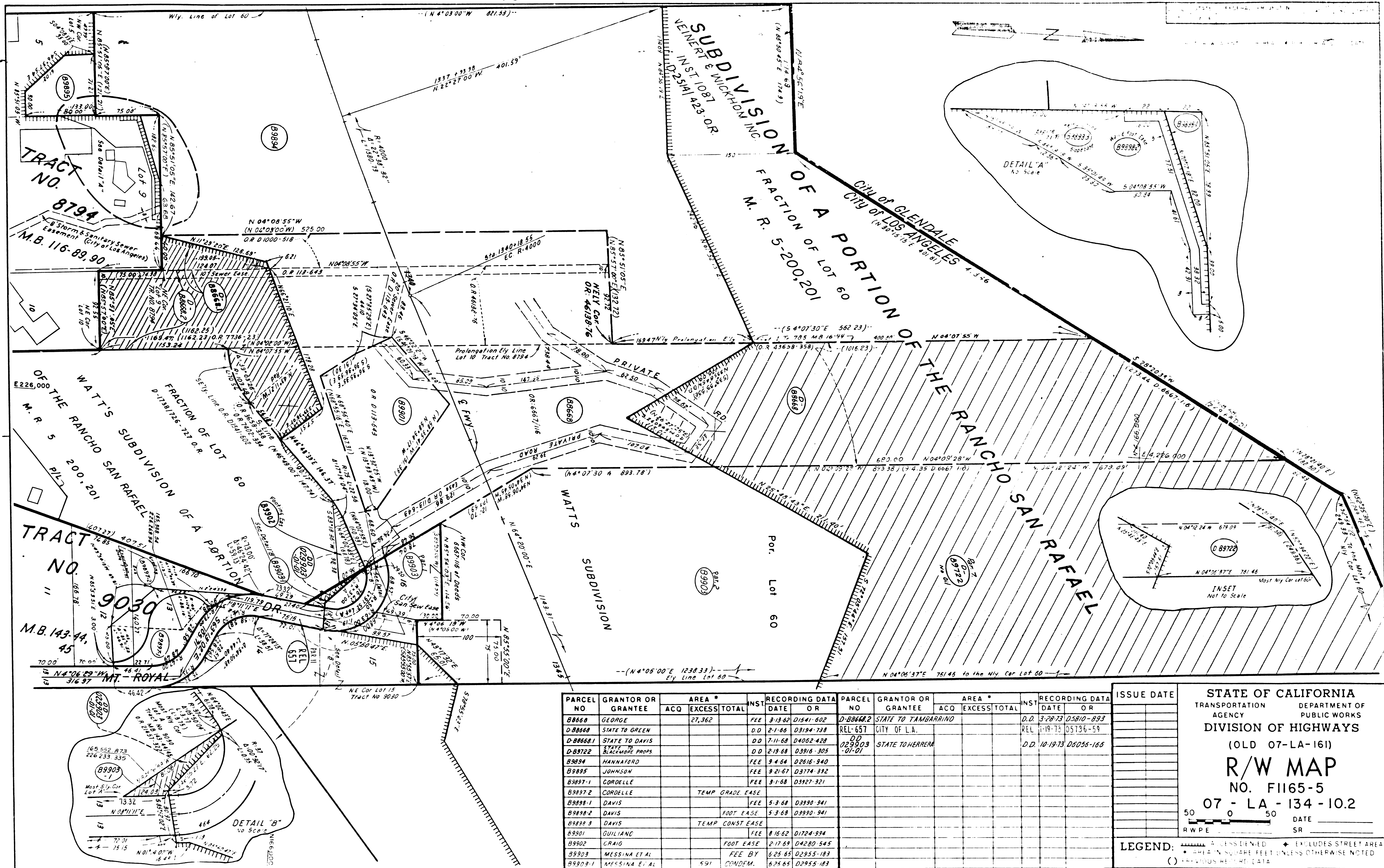
LEGEND:
 [Symbol] ACCESS DENIED
 [Symbol] EXCLUDES STREET AREA
 [Symbol] AREA IN SQUARE FEET UNLESS OTHERWISE NOTED
 [Symbol] PREVIOUS RECORD DATA
 [Symbol] INCLUDES ST. AREA

F.M. 21584-5

F1165-4

TRACED BY: L.R.A.

FOR CONTINUATION SEE MAP NO. F1165-4



PARCEL NO	GRANTOR OR GRANTEE	AREA *		INST	RECORDING DATA		PARCEL NO	GRANTOR OR GRANTEE	AREA *		INST	RECORDING DATA		ISSUE DATE	
		ACQ	EXCESS TOTAL		DATE	OR			ACQ	EXCESS TOTAL		DATE	OR		
B8668	GEORGE		21,362	FEE	3-13-62	D1541-602	D-88668-2	STATE TO TAMBARRINO				D.D.	3-28-73	D5810-893	
D-88668	STATE TO GREEN			D.D.	2-1-66	D3194-738	REL-651	CITY OF L.A.				REL	1-19-73	D5136-59	
D-88681	STATE TO DAVIS			D.D.	7-11-68	D4062-428	029903	STATE TO HERRERA				D.D.	10-19-73	D5056-165	
D-88722	BLACEMORE PROPS			D.D.	2-19-68	D3916-305									
B9894	HANNAFORD			FEE	9-4-64	D2816-940									
B9895	JOHNSON			FEE	9-21-67	D3174-392									
B9897-1	CORDELLE			FEE	3-1-68	D3927-321									
B9897-2	CORDELLE			TEMP GRADE EASE											
B9898-1	DAVIS			FEE	5-3-68	D3990-941									
B9898-2	DAVIS			FOOT EASE	5-3-68	D3990-941									
B9898-3	DAVIS			TEMP CONST EASE											
B9901	QUILIANO			FEE	8-16-62	D1724-994									
B9902	CRAIG			FOOT EASE	2-17-69	D4280-545									
B9903	MESSINA ET AL			FEE BY	6-26-65	D2955-183									
B9903-1	MESSINA ET AL			CONDEMN.	6-26-65	D2955-183									

STATE OF CALIFORNIA
 TRANSPORTATION DEPARTMENT OF
 AGENCY PUBLIC WORKS
 DIVISION OF HIGHWAYS
 (OLD 07-LA-161)
R/W MAP
 NO. F1165-5
 07 - LA - 134 - 10.2

ISSUE DATE: _____
 DATE: _____
 SR: _____

LEGEND: A LESS ENDED INCLUDES STREET AREA
 AREA IN SQUARE FEET UNLESS OTHERWISE NOTED
 PREVIOUS RECORD DATA

FOR CONTINUATION SEE MAP NO. F1165-6

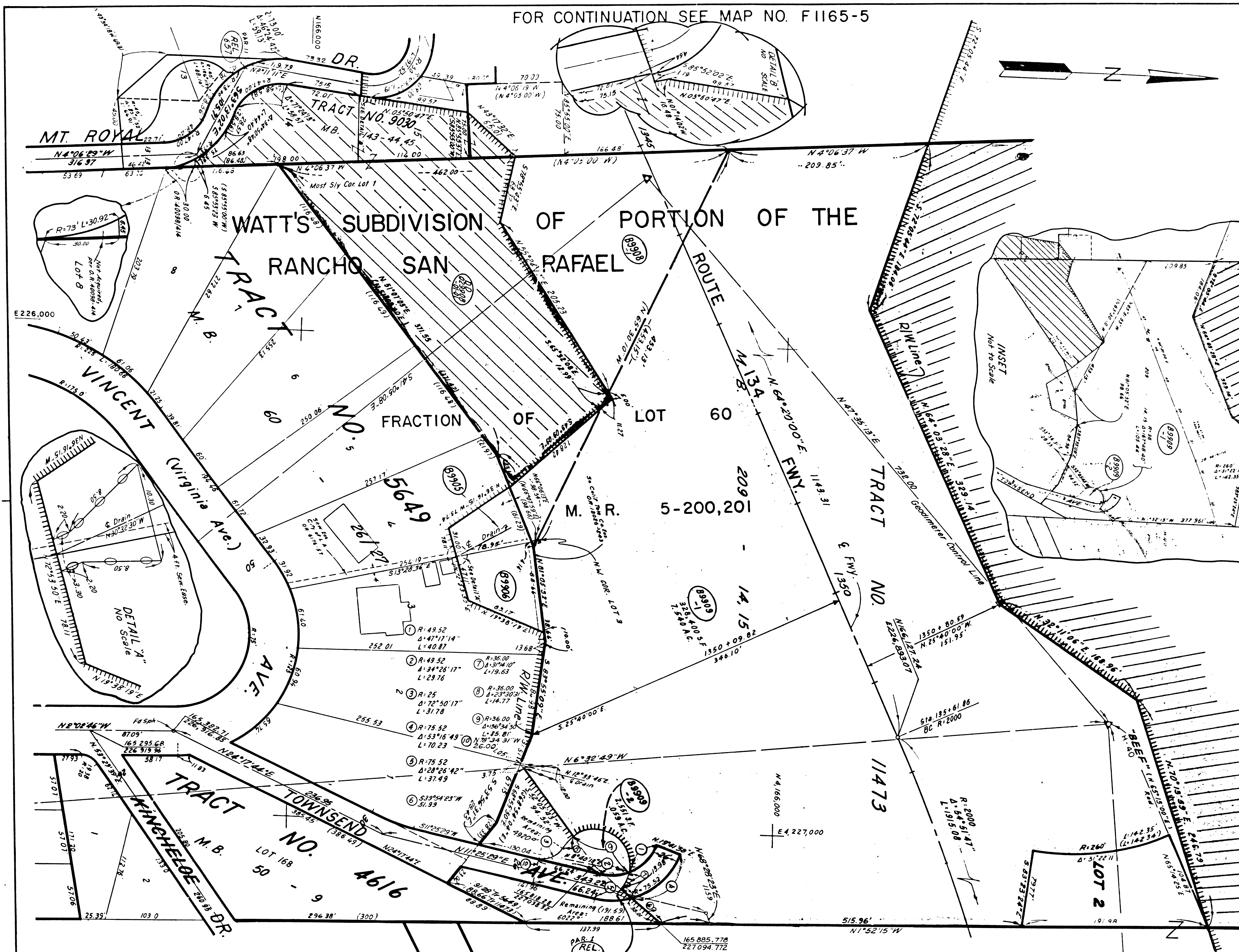
F.M. 21584-6

FOR CONTINUATION SEE MAP NO. F1165-5

STATE FEDERAL PROJECT NO. DATE
CALIF.

DISTRICT R/W AGENT BUREAU OF PUBLIC ROADS DATE

PARCEL NO	GRANTOR OR GRANTEE	ACQ	EXCESS	TOTAL	INST	RECORDING DATA	
						DATE	OR
89905	DREIFORT				FEE	8-1-68	D4265-97
89906	MC LAIN				FEE	1-8-68	D3888-425
89908-1	MC NEAL	69,474			FEE	9-11-68	D4127-630
89908-1	GOODGAME, ET AL	207,395			FEE CONDEM	9-28-72	D5617-714
89909-2	GOODGAME, ET AL				FEE CONDEM	9-28-72	D5617-714
DD 029908-101-01	ST. TO MACKEY				DD	1-8-73	D5075-4
REL 657	CITY OF LOS ANGELES				REL	1-19-73	D5756-519
REL 855A	CITY OF LOS ANGELES				REL	1-28-75	D6541-642
DD29909-01-01	CITY OF LOS ANGELES				DD	7-9-75	D6721-242



FOR CONTINUATION SEE MAP NO. F1165-7

ISSUE DATE

STATE OF CALIFORNIA
TRANSPORTATION DEPARTMENT OF
AGENCY PUBLIC WORKS
DIVISION OF HIGHWAYS
(OLD 07-LA-161)
R/W MAP
NO. F1165-6
07 - LA - 134 - 10.3

50 0 50 DATE
RWPE LAZAR SR. WEATHERHOLT

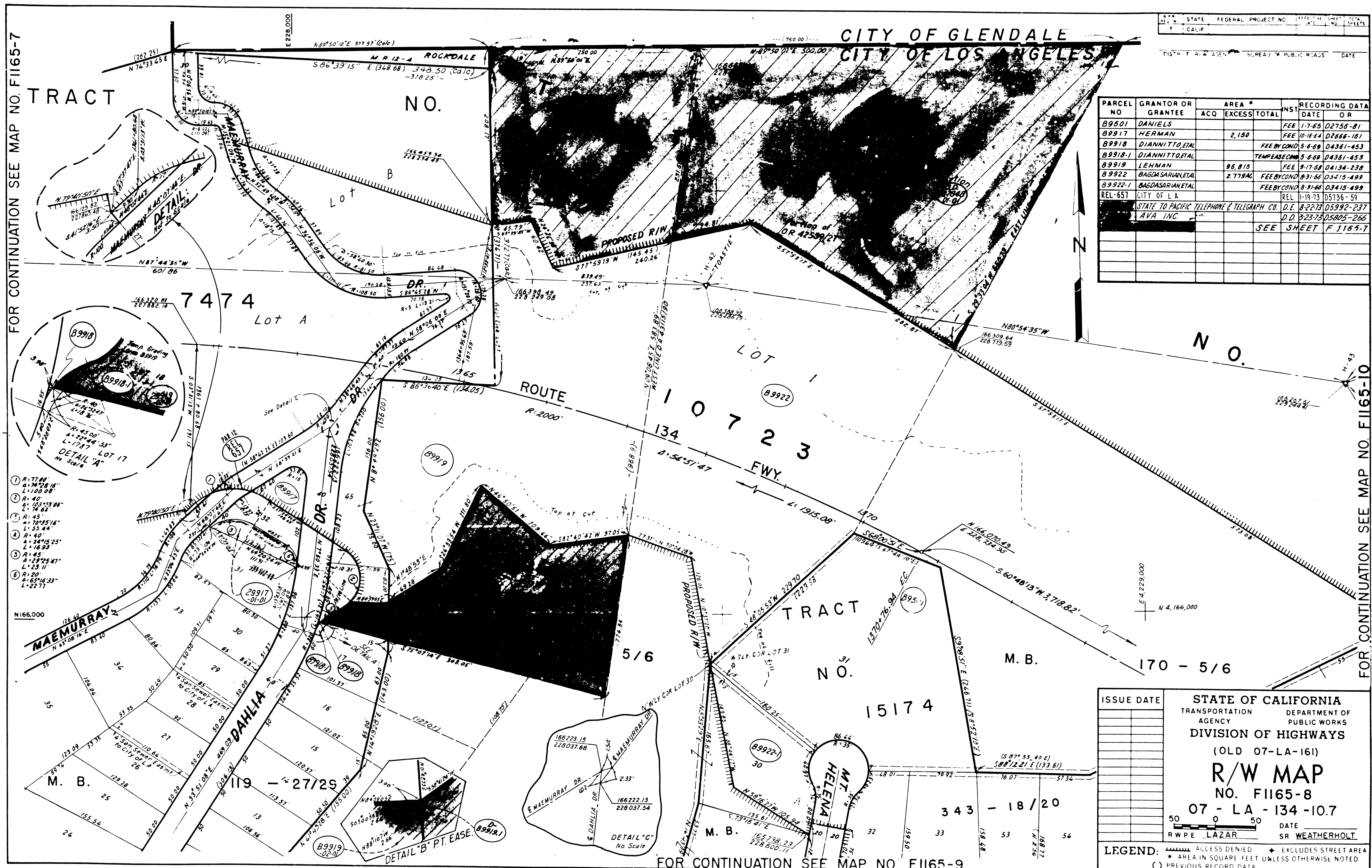
LEGEND: ACCESS DENIED EXCLUDES STREET AREA
 AREA IN SQUARE FEET UNLESS OTHERWISE NOTED
 PREVIOUS RECORD DATA

F.M. 21584-7

F1165-6-7

F1165-4

FOR CONTINUATION SEE MAP NO. F1165-7



STATE	FEDERAL PROJECT NO.	DATE
CALIF.		

PARCEL NO	GRANTOR OR GRANTEE	AREA *		INST. DATE	RECORDING DATA OR
		ACO	EXCESS TOTAL		
B9901	DANIELS			FEE 1-7-65	02755-81
B9917	HERMAN	2,150		FEE 10-16-64	02668-101
B9918	DIANNITTO, ETAL			FEE BY COND 5-6-69	04361-453
B9918-1	DIANNITTO, ETAL			TEMPER SEC 5-6-69	04361-453
B9919	LEHMAN	96,815		FEE 9-17-68	04134-238
B9922	BAGDASARIAN, ETAL	2,779 AC		FEE BY COND 8-31-66	03415-499
B9922-1	BAGDASARIAN, ETAL			FEE BY COND 8-31-66	03415-499
REL-657	CITY OF L.A.			REL 11-19-73	05136-59
	STATE TO PACIFIC TELEPHONE & TELEGRAPH CO.			D.E. 8-22-78	05992-237
	AVA INC.			D.D. 5-23-73	05605-266
				SEE SHEET F 1165-7	

- 1 R-77.84
A-74.28.16"
L-100.08'
- 2 R-40'
A-105.53.06"
L-74.63'
- 3 R-45'
A-170.25.16"
L-53.44'
- 4 R-40'
A-124.15.25"
L-16.93'
- 5 R-45'
A-125.25.47"
L-23.11'
- 6 R-20'
A-65.14.33"
L-22.77'

MAEMURRAY DR
N 43° 08' 14" E
83.10'

DAHLIA DR
N 31° 51' 08" E
446.02'

HELENA DR
N 56° 22' 24" W
105.94'

ROCKDALE TRACT NO. 12-4
M.B. 170-5/6

ISSUE DATE

STATE OF CALIFORNIA
TRANSPORTATION DEPARTMENT OF
AGENCY PUBLIC WORKS
DIVISION OF HIGHWAYS
(OLD 07-LA-161)
R/W MAP
NO. F1165-8
07-LA-134-10.7
DATE
RWPE LAZAR SR WEATHERHOLT

LEGEND:
 - ACCESS DENIED
 - EXCLUDES STREET AREA
 - AREA IN SQUARE FEET UNLESS OTHERWISE NOTED
 - PREVIOUS RECORD DATA

FOR CONTINUATION SEE MAP NO. F1165-9

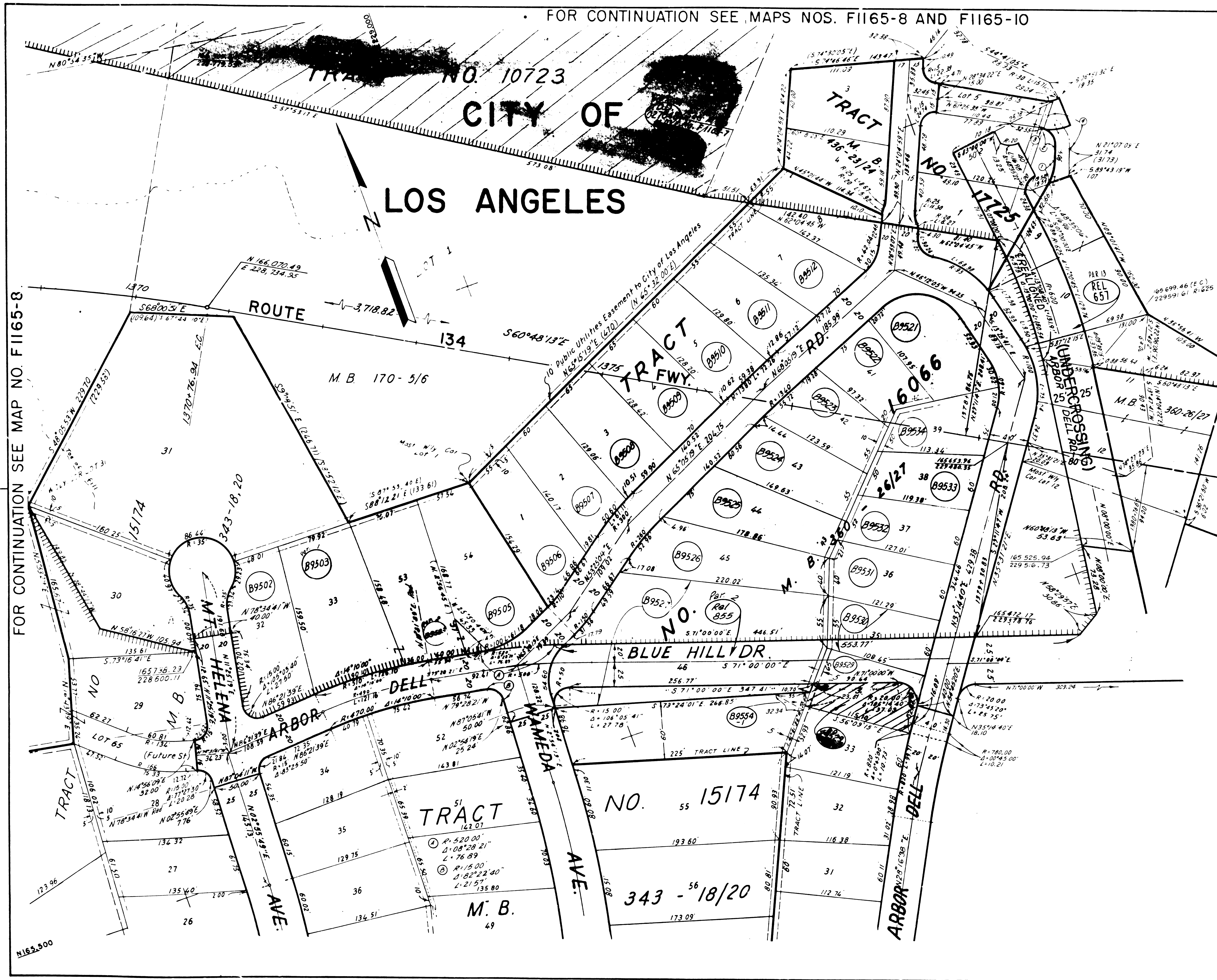
F.M. 21584-9

F1165-2

FOR CONTINUATION SEE MAP NO. F1165-10

TRACED BY: EM

FOR CONTINUATION SEE MAPS NOS. F1165-8 AND F1165-10



FOR CONTINUATION SEE MAP NO. F1165-8

FOR CONTINUATION SEE MAP NO. F1166-18 F1165-10

STATE	FEDERAL PROJECT NO.	SHEET NO.	TOTAL SHEETS
CALIF.		12	12
DISTRICT ROAD AGENT		BUREAU OF PUBLIC ROADS	DATE

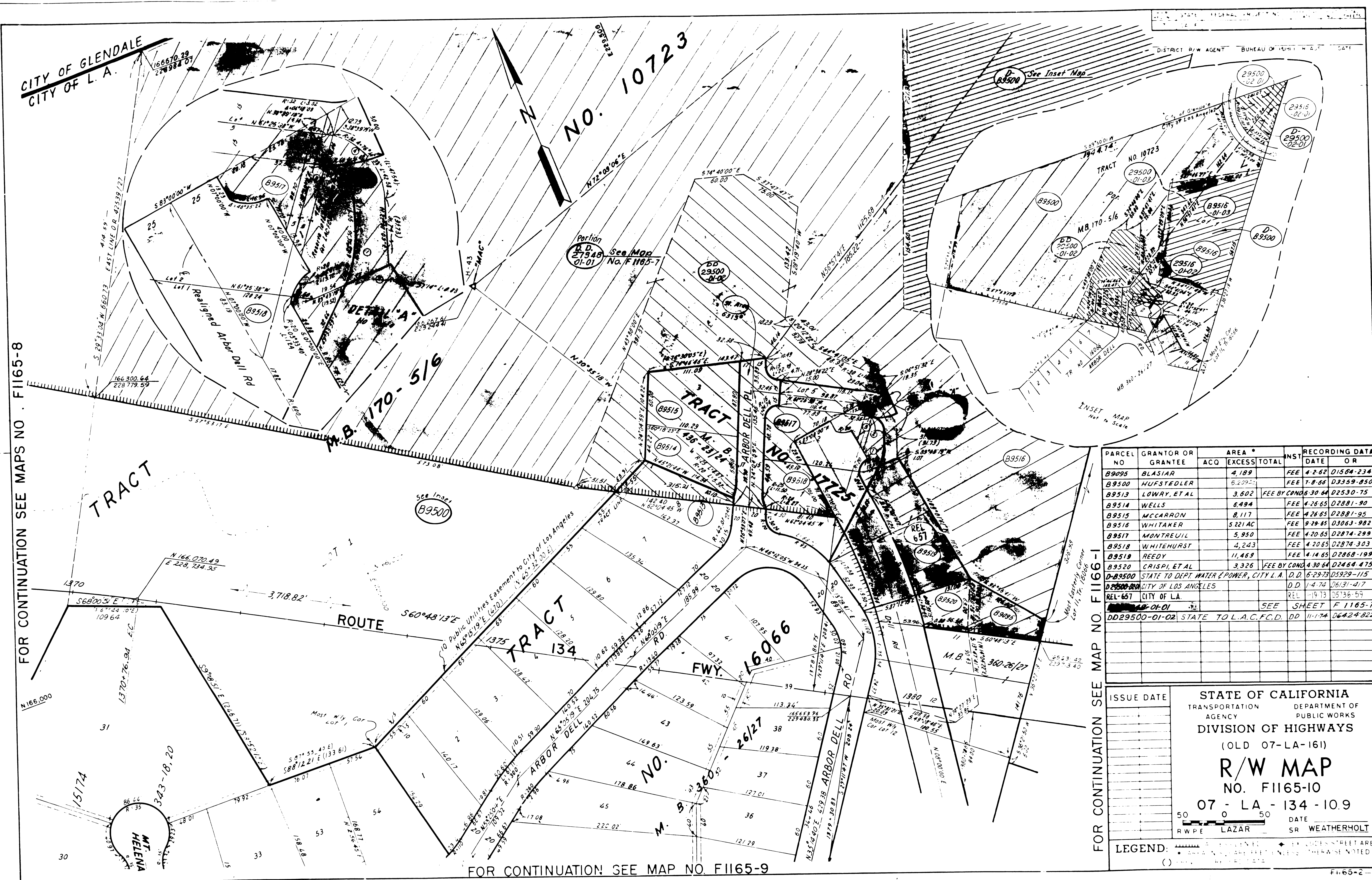
PARCEL NO	GRANTOR OR GRANTEE	AREA * ACQ EXCESS TOTAL	INST DATE OR	RECORDING DATA DATE OR
B9502	KUWAHARA		FEE 10-9-64	D2658-218
B9503	MIER		FEE 3-26-65	D2846-206
B9505	RUMSEY		FEE 8-6-64	D2579-898
B9506	ARMITSTEAD		FEE 8-12-64	D2586-580
B9507	CLEMENTS		FEE 9-15-64	D2626-531
B9508	WEICKARDT		FEE 5-15-63	D2029-449
B9509	MACY		FEE 3-8-63	D1946-432
B9510	REEVES		FEE 7-17-64	D2553-719
B9511	LOWRY, ET AL		FEE BY COND 6-30-64	D2530-75
B9512	LOWRY, ET AL		FEE BY COND 6-30-64	D2530-75
B9521	LOWRY, ET AL		FEE BY COND 6-30-64	D2530-75
B9522	LOWRY, ET AL		FEE BY COND 6-30-64	D2530-75
B9523	LOWRY, ET AL		FEE BY COND 6-30-64	D2530-75
B9524	LOWRY, ET AL		FEE BY COND 6-30-64	D2530-75
B9525	LOWRY, ET AL		FEE BY COND 6-30-64	D2530-75
B9526	MCMACKIN		FEE 12-1-64	D2718-490
B9527	WALZ		FEE 8-9-64	D2573-780
B9529	FISCHBECH	4196	FEE 4-14-65	D2868-186
B9530	CORTELYOU		FEE 7-11-62	D1680-321
B9531	LOWRY, ET AL		FEE BY COND 6-30-64	D2530-75
B9532	HAWLEY		FEE 3-11-63	D1948-192
B9533	GEORGE		FEE 10-29-62	D1804-857
B9534	LOWRY, ET AL		FEE BY COND 10-5-64	D2652-723
B9534-1	DICKENS		TEMPORARY CASE BY COND 7-26-68	D4880-251/253
REL-657	CITY OF L.A.		REL 11-19-65	D5136-59
REL-855	State to City of L.A. (Pr 2)		REL 11-1-73	D4348-114
	LE FEVER		7-12-74	D6344-467
			SEE SHEET F 1165-7	

ISSUE DATE	STATE OF CALIFORNIA TRANSPORTATION AGENCY DEPARTMENT OF PUBLIC WORKS DIVISION OF HIGHWAYS (OLD 07-LA-161) R/W MAP NO. F1165-9 07 - LA - 134-10.8 50 0 50 RWPE LAZAR DATE SR WEATHERHOLT
LEGEND:	ACCESS DENIED AREA IN SQUARE FEET UNLESS OTHERWISE NOTED PREVIOUS RECORD DATA

F.M. 21584-110

CITY OF GLENDALE
CITY OF L.A.

FOR CONTINUATION SEE MAPS NO. F1165-8



PARCEL NO	GRANTOR OR GRANTEE	AREA *			INST	RECORDING DATA	
		ACQ	EXCESS	TOTAL		DATE	OR
B9095	BLASIAK		4.189		FEE	4-2-62	D1504-234
B9500	HUFSTEDLER		5.292		FEE	7-8-66	D3359-850
B9513	LOWRY, ET AL		3.602		FEE BY COND	6-30-64	D2530-75
B9514	WELLS		6.494		FEE	4-26-63	D2881-90
B9515	MCCARRON		8.117		FEE	4-26-63	D2881-95
B9516	WHITAKER		5.221 AC		FEE	9-29-65	D3063-982
B9517	MONTEVEIL		5.950		FEE	4-20-65	D2874-299
B9518	WHITEHURST		4.243		FEE	4-20-65	D2874-303
B9519	REEDY		11.469		FEE	4-14-65	D2868-199
B9520	CRISPI, ET AL		3.326		FEE BY COND	4-30-64	D2464-475
D-89500	STATE TO DEPT. WATER & POWER, CITY L.A.				D.D.	6-29-73	D5929-115
D-89500-01-01	CITY OF LOS ANGELES				D.D.	1-4-74	D6131-417
REL-657	CITY OF L.A.				REL	11-9-73	D5136-59
DD29500-01-02	STATE TO L.A.C.F.C.D.				DD	11-17-74	D6424-822

FOR CONTINUATION SEE MAP NO. F1166-1

ISSUE DATE

STATE OF CALIFORNIA
TRANSPORTATION AGENCY
DEPARTMENT OF PUBLIC WORKS
DIVISION OF HIGHWAYS
(OLD 07-LA-161)
R/W MAP
NO. F1165-10
07 - LA - 134 - 10.9

DATE
SR WEATHERHOLT

LEGEND:

TRACED BY: [Signature]

FOR CONTINUATION SEE MAP NO. F1165-9

F.M. 21584-11