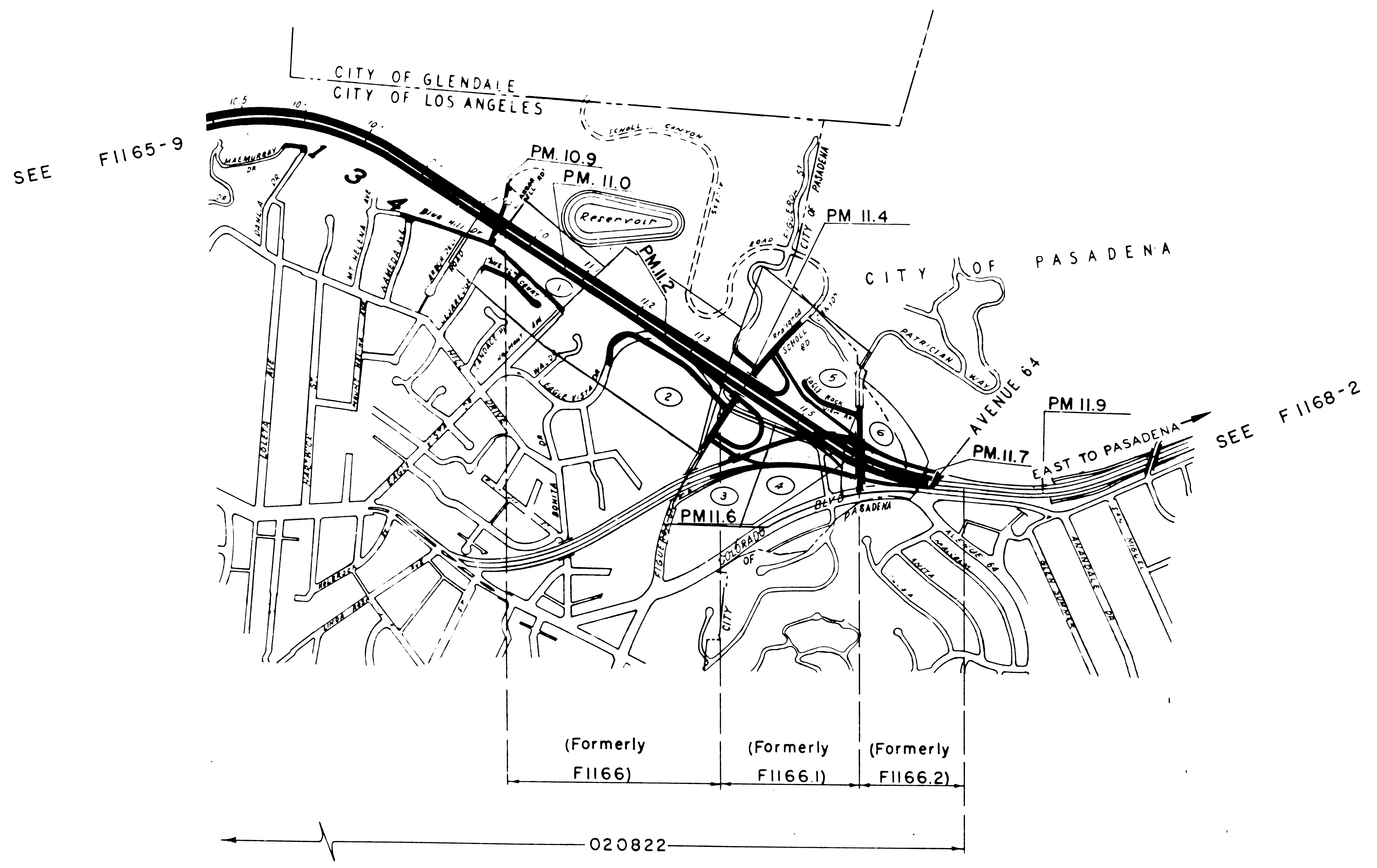
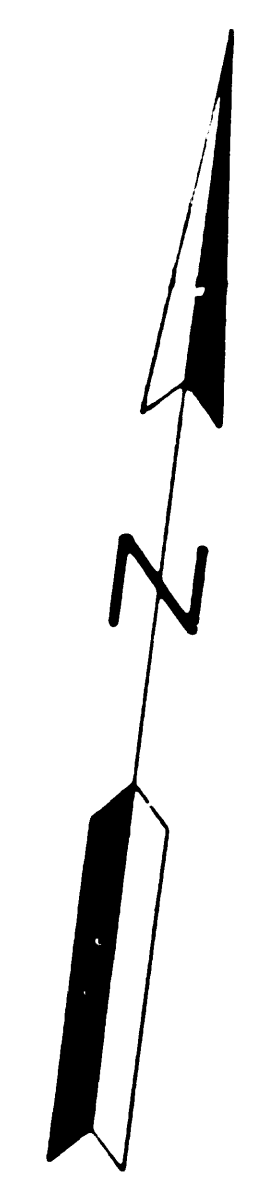


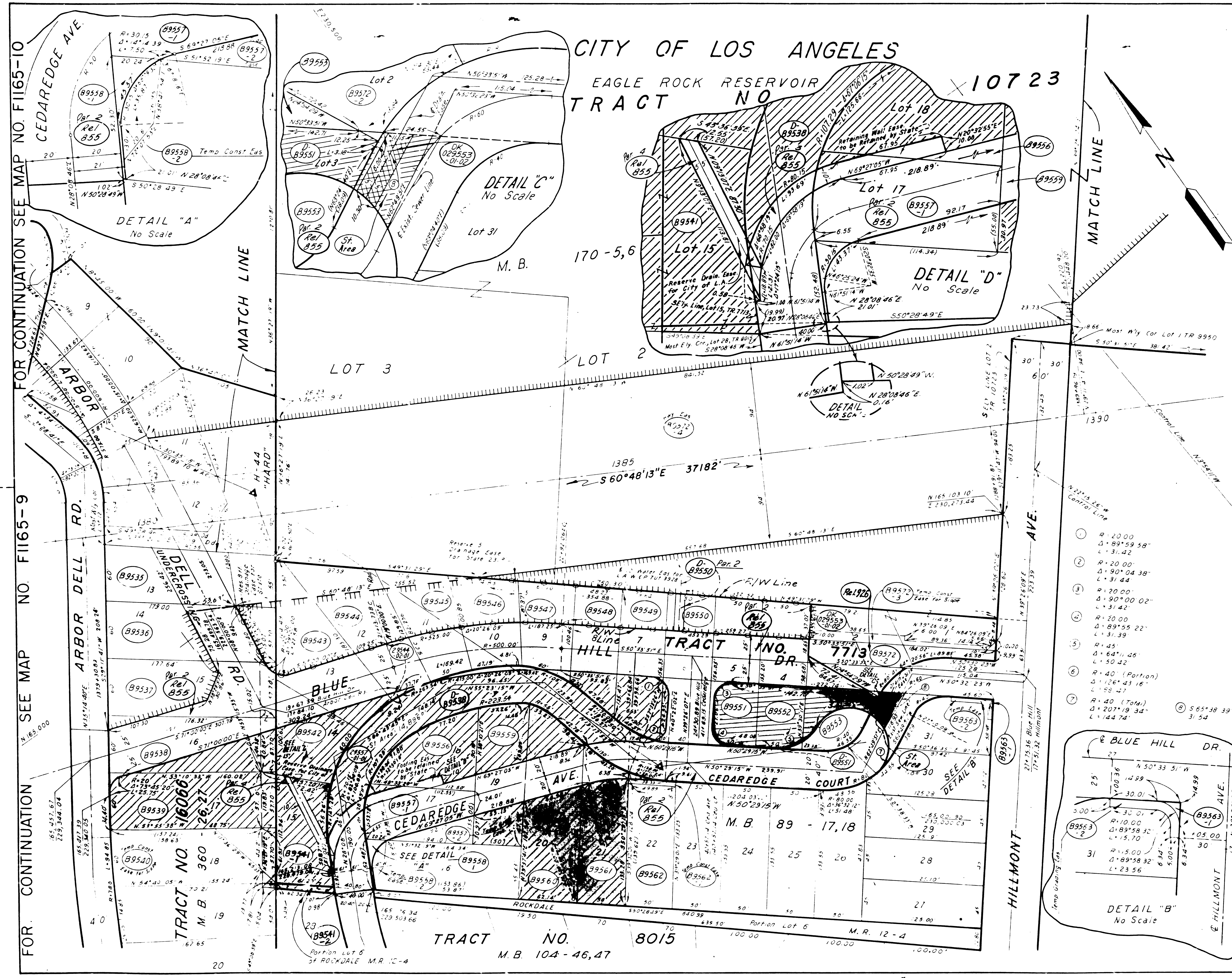
F1166 INDEX SHEET

- | | | | |
|---|---------|---|---------|
| ① | F1166-1 | ④ | F1166-4 |
| ② | F1166-2 | ⑤ | F1166-5 |
| ③ | F1166-3 | ⑥ | F1166-6 |



STATE OF CALIFORNIA TRANSPORTATION AGENCY
 DEPARTMENT OF PUBLIC WORKS
 DIVISION OF HIGHWAYS
 07 - LA - 134 - 10.9 / 11.7
R/W INDEX MAP
 600 0 600
 F-No. F1166 DATE

F.M. 2 | 1 | 5 | 8 | 5 | - | 1



FOR CONTINUATION SEE MAP NO. F1165-10

FOR CONTINUATION SEE MAP NO. F1165-9

FOR CONTINUATION SEE MAP NO. F1165-10

STATE FEDERAL PROJECT NO. DATE SHEETS
 CALIF. BUREAU OF PUB. WORKS DATE

PARCEL NO	GRANTOR OR GRANTEE	AREA *			INST	RECORDING DATA	
		ACO	EXCESS	TOTAL		DATE	OR
89535	CREED				FEE	12163	02055-247
89536	SCHULZ				FEE	31163	01248-178
89537	MESMITH				FEE	51063	02223-912
89538	CARLIN	2,521			FEE	91963	02671-841
89539	DAVIS	9,201			FEE	82563	03026-B-B
89540	MANN VELY				TEMP EAS		
89541	STROYS	8,206			FEE	21563	03171-421
89541-2	STROYS				FEE	31163	01176-311
89542	HAMILTON	4,936			FEE	28663	01944-581
89543	LARSON	998			FEE	10163	02151-521
89544	BELM	125			FEE	22663	02460-292
89545	WISBY				FEE COND	55663	02460-292
89546	SNYDER				FEE	22663	02114-712
89547	LEAP	79			FEE	27663	02114-712
89548	DUFFY	1,277			FEE	10763	02218-872
89549	FOPHLE	2,877			FEE	33663	02325-251
89550	KREYSER	313			FEE	07663	02204-663
89551	CRISP	3,006			FEE COND	47663	02434-720
89552	BROWN	3,255			FEE	10663	01880-638
89553	HARTSON	2,019			FEE	62663	03372-708
89556	HIMMEL	6,371			FEE	13663	03175-4
89557-1	FLEURO	754			FEE	12663	02052-311
89557-2	FLEURO				TEMP EAS		
89558-1	CAMERON				FEE	02663	02473-387
89558-2	CAMERON				TEMP EAS		
89559	CUMLETT	3,423			FEE	81063	03010-90
89560	SAYO	2,161			FEE	22663	03513-370
89561	UECKE	6			FEE	81063	03010-92
89562	COLLINS				FEE	86663	03332-167
89562-1	COLLINS				TEMP EAS		
89563-1	BENDER				FEE	61063	04026-282
89572-1	CITY OF LOS ANGELES				TEMP EAS		
89572-2	CITY OF LOS ANGELES				TEMP EAS		
89572-3	CITY OF LOS ANGELES				TEMP EAS		
89572-4	CITY OF LOS ANGELES				TEMP EAS		
D-89558	STATE TO FLORIDA				D.D.	9768	04093-301,301
89563-2	BANDER				TEMP EAS		
D-89551	STATE TO MAMIE				D.D.	41973	05838-345
D-89550	STATE TO CITY OF L.A., DEPT WATER PWR				D.D.	10112	05564-602
D-89538	STATE TO REISZ				D.D.	81973	05977-436
Rel-855	State to City of L.A. (Par 2 & 3)				Rel	11173	02348-114
DK029553-01-02	CITY OF LOS ANGELES				DK	10974	06440-172
REL-926	City of L.A.				Rel	112974	06488-414

FOR CONTINUATION SEE MAP NO. F1166-2

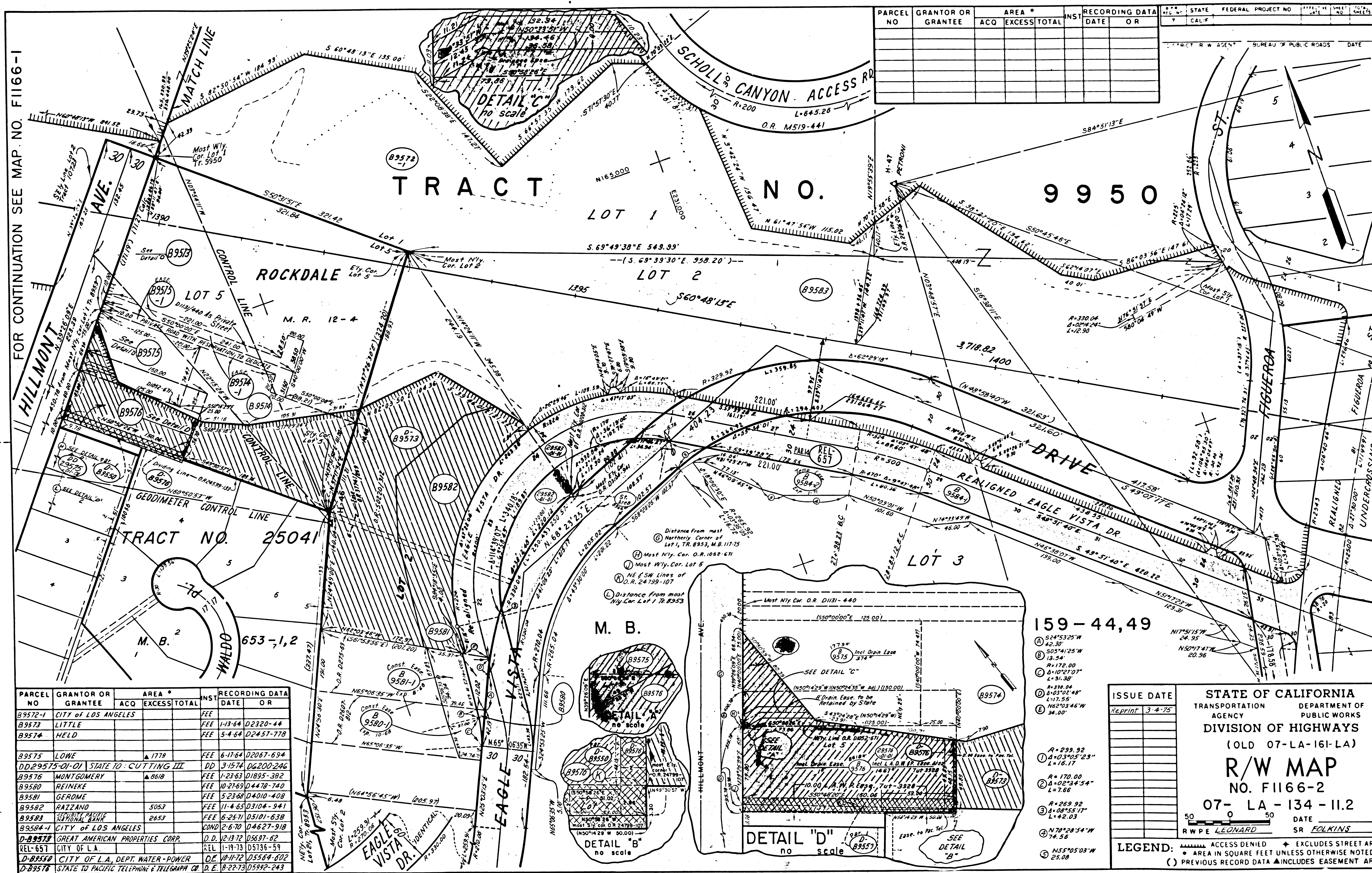
ISSUE DATE	REVISION
12-1-75	1

STATE OF CALIFORNIA
 TRANSPORTATION DEPARTMENT OF
 AGENCY PUBLIC WORKS
 DIVISION OF HIGHWAYS
 (OLD 07-LA-161-LA)
R/W MAP
 NO. F1166-1
 07-LA-134-II.0
 RWPE LEONARD SR

LEGEND: AREA NOT SHOWN EXCLUDES STREET AREA
 AREA IN SQUARE FEET UNLESS OTHERWISE NOTED
 () PREVIOUS RECORD DATA ▲ INCLUDES EASEMENT AREA

FOR CONTINUATION SEE MAP NO. F1166-1

FOR CONTINUATION SEE MAP NO. F1166-5



PARCEL NO	GRANTOR OR GRANTEE	ACQ	AREA *		INS	RECORDING DATA		STATE	FEDERAL PROJECT NO	SHEET NO	TOTAL SHEETS
			EXCESS	TOTAL		DATE	OR				

PARCEL NO	GRANTOR OR GRANTEE	ACQ	AREA *		INS	RECORDING DATA	
			EXCESS	TOTAL		DATE	OR
B9572-1	CITY OF LOS ANGELES				FEE	1-13-64	D2320-44
B9573	LITTLE				FEE	5-4-64	D2451-77
B9574	HELD						
B9575	LOWE	1778			FEE	6-17-64	D2067-694
DD29575-01-01	STATE OF CALIFORNIA				DD	3-15-74	D6200-246
B9576	MONTGOMERY	8618			FEE	7-23-63	D1895-382
B9580	REINKE				FEE	10-27-63	D4478-740
B9581	GEROME				FEE	5-23-66	D4010-408
B9582	RAZZANO	5053			FEE	11-4-65	D3104-941
B9583	REYNOLDS	2653			FEE	6-26-71	D5101-638
B9584-1	CITY OF LOS ANGELES				COND	2-6-70	D4627-918
D-B9577	GREAT AMERICAN PROPERTIES CORP.				D.D.	12-13-72	D5697-62
REL-657	CITY OF L.A.				REL	11-19-73	D5136-59
D-B9579	CITY OF L.A., DEPT. WATER-POWER				DE	10-17-72	D3564-602
D-B9578	STATE TO PACIFIC TELEPHONE & TELEGRAPH CO				D.E.	8-22-73	D5942-243

- 159-44,49
- ① 524°53'25"W 42.30'
 - ② 505°41'25"W 13.54'
 - ③ 117°12'00"W 117.00'
 - ④ 110°27'07"W 117.55'
 - ⑤ 162°03'45"W 34.00'
 - ⑥ 299.92'
 - ⑦ 410°30'25" 117.55'
 - ⑧ 170.00'
 - ⑨ 117.00'
 - ⑩ 117.55'
 - ⑪ 117.55'
 - ⑫ 117.55'
 - ⑬ 117.55'
 - ⑭ 117.55'
 - ⑮ 117.55'
 - ⑯ 117.55'
 - ⑰ 117.55'
 - ⑱ 117.55'
 - ⑲ 117.55'
 - ⑳ 117.55'

ISSUE DATE: REPRINT 3-4-75

STATE OF CALIFORNIA
 TRANSPORTATION DEPARTMENT OF PUBLIC WORKS
 AGENCY
 DIVISION OF HIGHWAYS
 (OLD 07-LA-161-LA)
R/W MAP
 NO. F1166-2
 07-LA-134-II.2
 DATE: 7-24-58
 RWPE LEONARD SR FOLKINS

LEGEND:
 [Symbol] ACCESS DENIED
 [Symbol] EXCLUDES STREET AREA
 [Symbol] AREA IN SQUARE FEET UNLESS OTHERWISE NOTED
 [Symbol] PREVIOUS RECORD DATA
 [Symbol] INCLUDES EASEMENT AREA

F.M. 21585-3

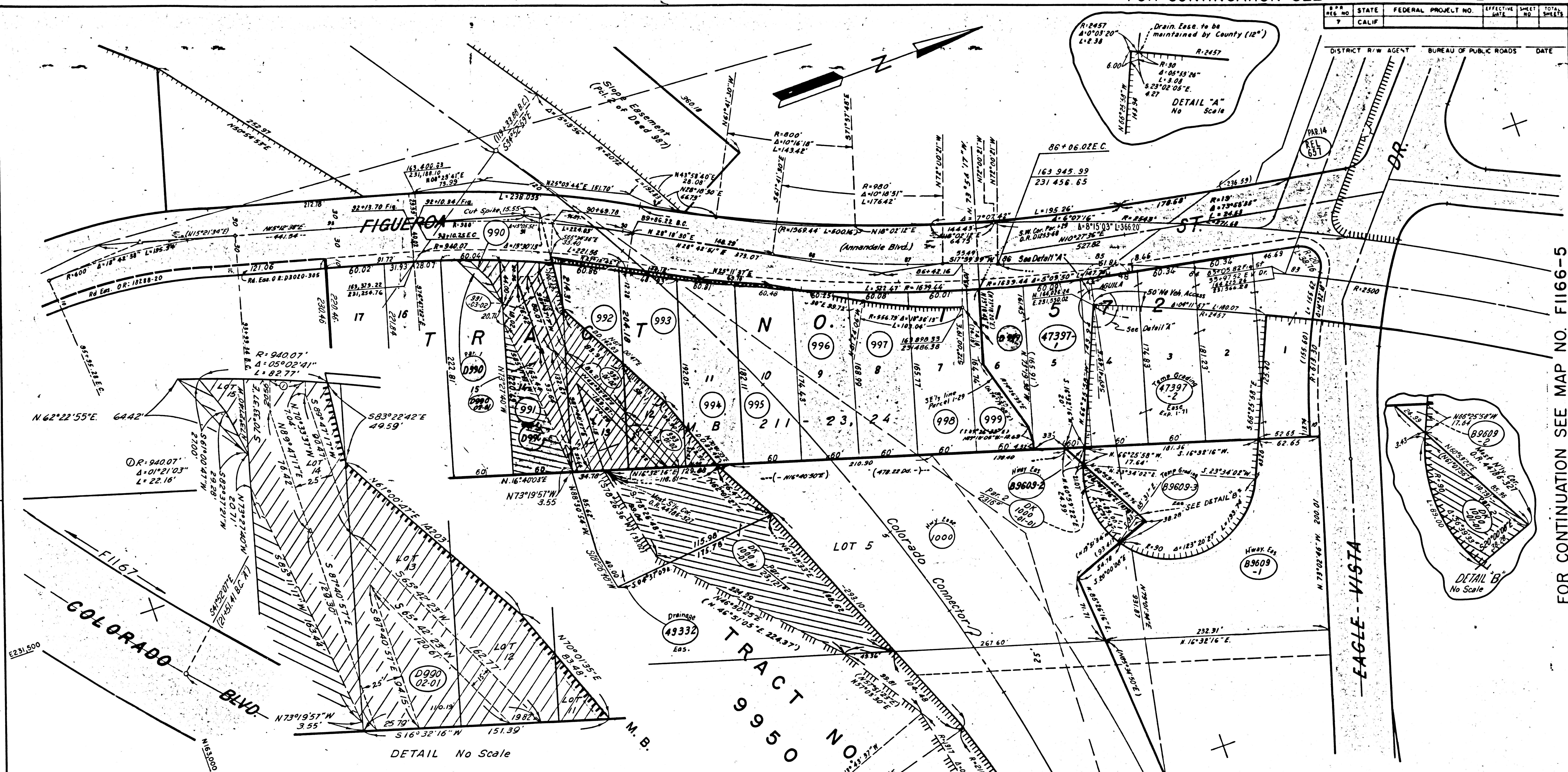
FM 21585-3

FOR CONTINUATION SEE MAP NO. F1166-3

TRACED BY SUMT

FOR CONTINUATION SEE MAP NO. F1166-2

STATE	FEDERAL PROJECT NO.	EFFECTIVE DATE	SHEET NO.	TOTAL SHEETS
CALIF.				



PARCEL NO.	GRANTOR OR GRANTEE	ACQ	AREA * EXCESS TOTAL	INST	RECORDING DATA DATE OR	PARCEL NO.	GRANTOR OR GRANTEE	ACQ	AREA * EXCESS TOTAL	INST	RECORDING DATA DATE OR
990	WILEY		542	FEE	9-4-59 42628-439	9982	SO CAL EDISON CO. TO CITY OF L.A.				
991	BROWN		8054	FEE	1-5-53 40655-309		STATE TO WILEY			D.D.	2-16-61 0126-239
992	ELIOT		8233	FEE	12-8-53 43331-386		STATE TO MEEN			D.D.	5-10-57 34478-57
993	BOLLINGER		4643	FEE	6-18-53 41964-69		REL-651 CITY OF L.A.			REL	1-19-73 05736-59
994	MANSFIELD		663	FEE	1-22-53 40786-205		DR 1000-0-0 STATE TO SO CAL EDISON CO.			DK	7-18-73 05950-958
995	NEELY			FEE	12-11-52 40501-321		D990-02-01 STATE TO MAYO			D.D.	12-12-53 06108-615
996	SCHNEIDER			FEE	1-28-53 40796-198						
997	KILPATRICK			FEE	3-6-53 41145-187						
998	KARAT			FEE	2-2-54 43795-368						
999	HOUGHTON			FEE	9-15-53 42891-410						
1000	SO. CAL. EDISON CO.	25,437		HWY EASE	6-11-54 44786-327						
B9609-1	SO. CAL. EDISON CO.			HWY EASE							
B9609-2	SO. CAL. EDISON CO.			HWY EASE							
B9609-3	SO. CAL. EDISON CO.			TEMP GRAD EASE							
47397-1	CO. OF L.A.			FEE BY COND	6-13-74 06307-827						
47397-2	CO. OF L.A.			TEMP GRAD EASE BY COND	6-13-74 06307-827						

FOR CONTINUATION SEE MAP NO. F1166-4

F.M. 21585-4

ISSUE DATE
Redprint 3-4-75

STATE OF CALIFORNIA
TRANSPORTATION AGENCY
DEPARTMENT OF PUBLIC WORKS
DIVISION OF HIGHWAYS
(OLD 07-LA-161-LA)
R/W MAP
NO. F1166-3
07-LA-134-II.4
DATE
R.W.P.E. LEONARD SR. FOLKINS

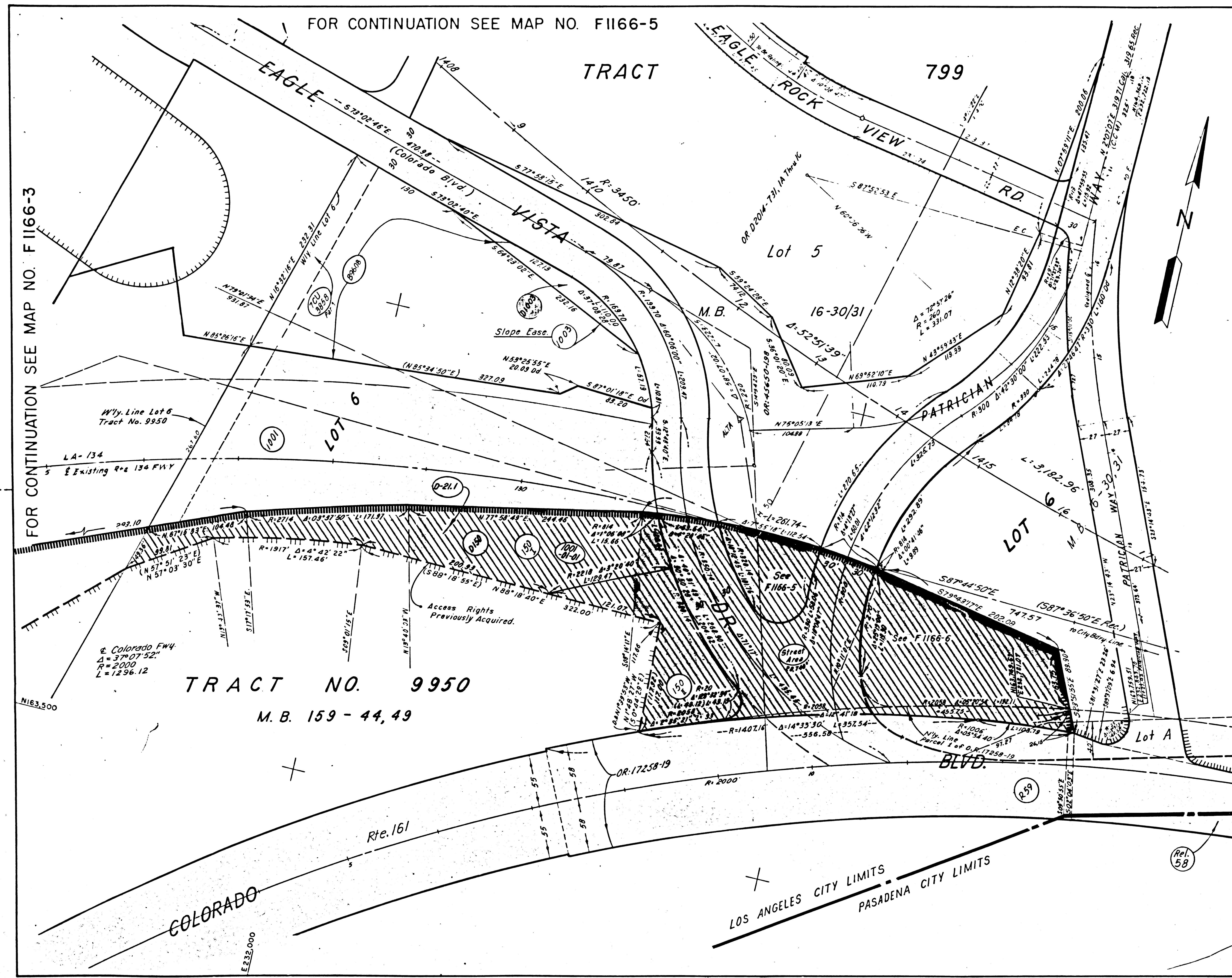
LEGEND:
ACCESS DENIED
AREA IN SQUARE FEET UNLESS OTHERWISE NOTED
EXCLUDES STREET AREA
PREVIOUS RECORD DATA

FM 21585-4

FOR CONTINUATION SEE MAP NO. F1166-5

TRACED BY B.J.A.

FOR CONTINUATION SEE MAP NO. F1166-5



FOR CONTINUATION SEE MAP NO. F1166-3

TRACT NO. 9950
M. B. 159 - 44, 49

REG. NO.	STATE	FEDERAL PROJECT NO.	EFFECTIVE DATE	SHEET NO.	TOTAL SHEETS
7	CALIF.				
DISTRICT R/W AGENT		BUREAU OF PUBLIC ROADS		DATE	

PARCEL NO.	GRANTOR OR GRANTEE	AREA *		INST.	RECORDING DATA	
		ACO	EXCESS TOTAL		DATE	OR
1001	SEC. 1st NATL. BANK OF L.A.	40,805		FEE	9-29-55	48802-309
1003	SEC. 1st NATL. BANK OF L.A.			SLOPE CASE	7-19-55	48395-275
B9608	GOODGAME, ETAL			COND.	8-21-64	02600-245
150 I	HUNTINGTON LAND & IMP. CO.			FEE	1-29-52	38143-258
150 II	HUNTINGTON LAND & IMP. CO.			FEE	4-14-52	38639-433
D-180	STATE TO SEC. 1st NATL. BANK			QC	12-15-54	46383-408
	(TO CORRECT DEED Q.C. 150 I, 150 II)					
B9608	SEC. 1st NATL. BANK OF LA			QC	2-10-57	53668-381
TCU3858	STATE & METROPOLITAN WATER DIST.			C.U.		
R-69	CITY OF LOS ANGELES			Rel	11-7-55	49456-359
D-211	STATE TO KAY PROPERTIES			D.D.	5-25-73	05884-632

FOR CONTINUATION SEE MAP NO. F1166-6

ISSUE DATE
Reprint 3-4-76

STATE OF CALIFORNIA
TRANSPORTATION AGENCY
DEPARTMENT OF PUBLIC WORKS
DIVISION OF HIGHWAYS
(OLD 07-LA-161)
R/W MAP
NO. F1166-4
07-LA-134-11.4
DATE
SR. FOLKINS

LEGEND:
ACCESS DENIED
AREA IN SQUARE FEET UNLESS OTHERWISE NOTED
PREVIOUS RECORD DATA

EXCLUDES STREET AREA

F.M. 21585-5

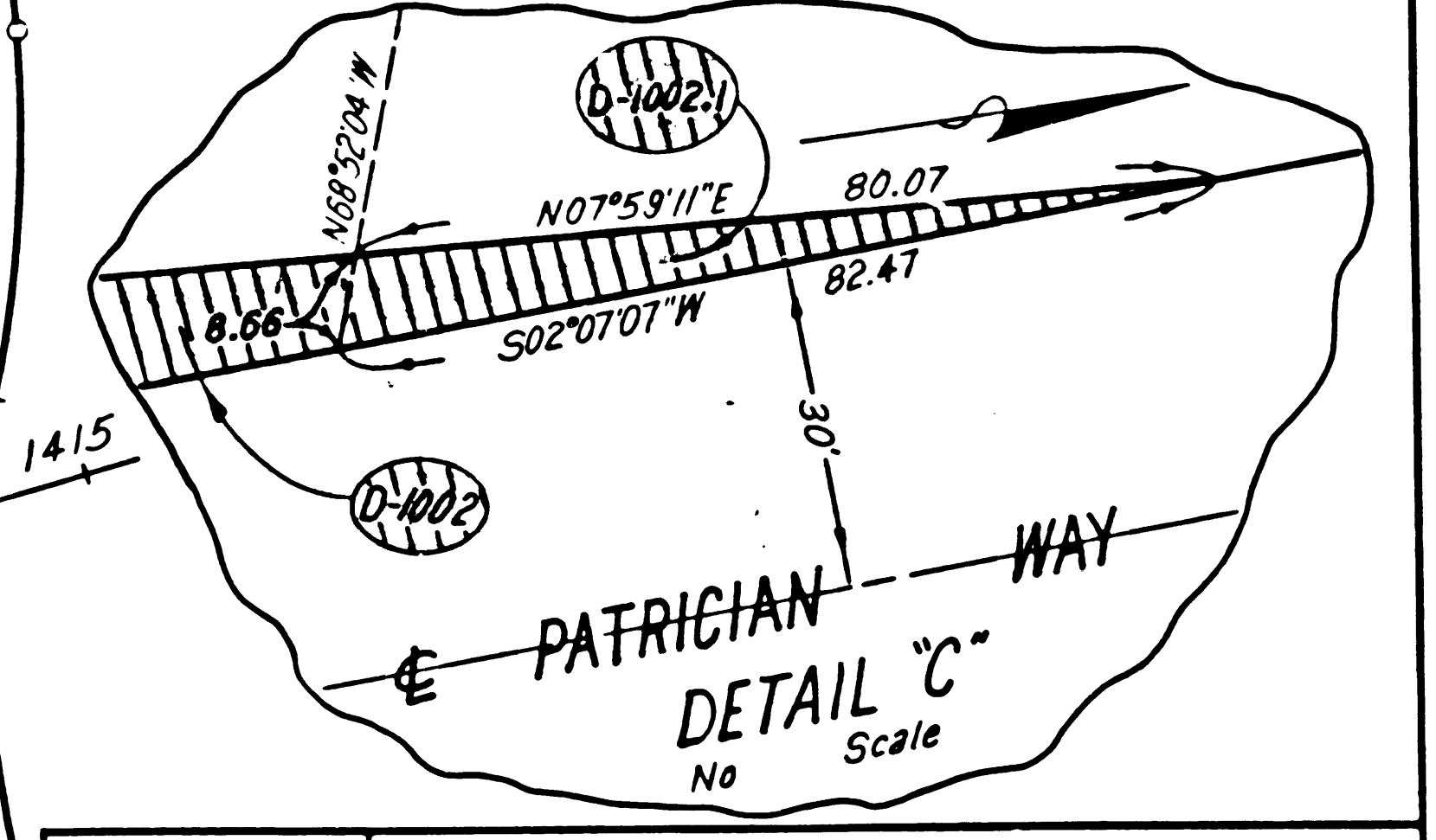
FM 21585-5

TRACED BY: B. J. A.

REG. NO.	STATE	FEDERAL PROJECT NO.	EFFECTIVE DATE	SHEET NO.	TOTAL SHEETS
7	CALIF.				

DISTRICT R/W AGENT BUREAU OF PUBLIC ROADS DATE

PARCEL NO.	GRANTOR OR GRANTEE	AREA * ACQ. EXCESS TOTAL	INST. DATE	RECORDING DATA OR
B7559	EAGLE ROCK PROP., INC., ET AL.		5-2-63	D2014-731
B7559-1	THOMAS		4-20-70	D4690-488
B7559-2	THOMAS		7-31-69	D4451-5016
B9593	SHELTON		4-20-70	D4690-488
B9594	ADAIR			
B9595	BOWEN		6-29-67	D3687-450
B9595-1	BOWEN		6-29-67	D3687-450
B9596	MEYERS		6-29-67	D3687-447
B9596-1	MEYERS		6-29-67	D3687-447
B9597	DINNITTO	5171	9-3-68	D4119-124
B9598	EDDY		3-22-63	D1963-186
B9599	MC MILLAN		12-11-62	D1851-60
B9600	BERGERON		3-8-63	D1948-441
B9601	COLLIER		11-20-63	D2267-300
B9602	TURNER		5-28-62	D1628-644
B9611-1	LINE		4-20-70	D4690-488
B9611-2	LINE	EASE BY COND.	4-20-70	D4690-488
B9611-3	LINE	SEW. EASE	4-20-70	D4690-488
47398-1	LINE, ET AL		4-20-70	D4690-488
47398-2	LINE, ET AL		4-20-70	D4690-488
47398-3	LINE, ET AL		4-20-70	D4690-488
47437-1	SO. CAL. EDISON CO.			HWY. EASE
47437-2	SO. CAL. EDISON CO.			TEMP. EASE
47437-3	SO. CAL. EDISON CO.			TEMP. EASE
47437-4	SO. CAL. EDISON CO.			TEMP. EASE
47437-5	SO. CAL. EDISON CO.			SEW. EASE
47437-6	SO. CAL. EDISON CO.			DRAIN. EASE
47466-1	EAGLE ROCK PROP., INC., ET AL.		11-24-69	D4554-115
47466-2	EAGLE ROCK PROP., INC., ET AL.		11-24-69	D4504-115
47766	REAL		2-25-69	D4288-518
47766-2	REAL		2-25-69	D4288-518
47766-3	REAL		2-25-69	D4288-518
1002	LINE	7194	9-22-54	45650-198
7CU3858	STATE & METROPOLITAN WATER DIST.			CU 71-69
TJU4055	STATE & SO. CAL. EDISON CO.		JUL 10 1972	D4588-551
D1002	STATE TO REAL		D.D. 5-9-72	D5455-102
B-1002.1	STATE TO PATRICIAN PROPERTIES		D.D. 11-16-72	D5669-876
REL-657	CITY OF L.A.		REL 11-19-73	D5136-59

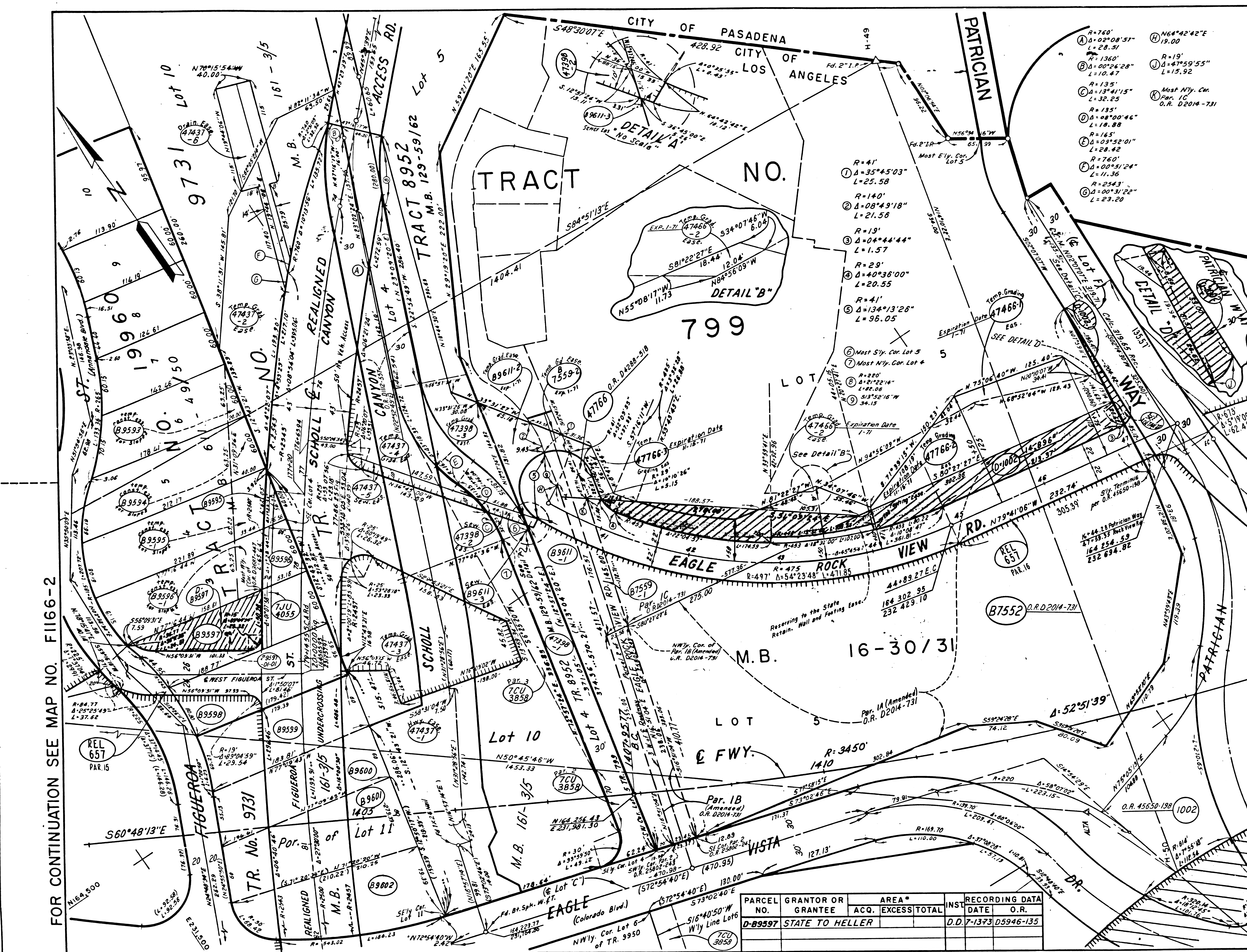


ISSUE DATE
Reprint 3-4-78

STATE OF CALIFORNIA
TRANSPORTATION DEPARTMENT OF
AGENCY PUBLIC WORKS
DIVISION OF HIGHWAYS
(OLD 07-LA-161 LA)
R/W MAP
NO. F1166-5
07- LA - 134 - 11.5
DATE
RW P E LEONARD SR FOLKINS

LEGEND: ACCESS DENIED EXCLUDES STREET AREA
* AREA IN SQUARE FEET UNLESS OTHERWISE NOTED
() PREVIOUS RECORD DATA

PARCEL NO.	GRANTOR OR GRANTEE	AREA * ACQ. EXCESS TOTAL	INST. DATE	RECORDING DATA OR
D-89597	STATE TO HELLER		D.D. 7-13-73	D5946-135



FOR CONTINUATION SEE MAP NO. F1166-2

FOR CONTINUATION SEE MAP NO. F1166-3

F.M. 21585-6

FOR CONTINUATION SEE MAP NO. F1166-4

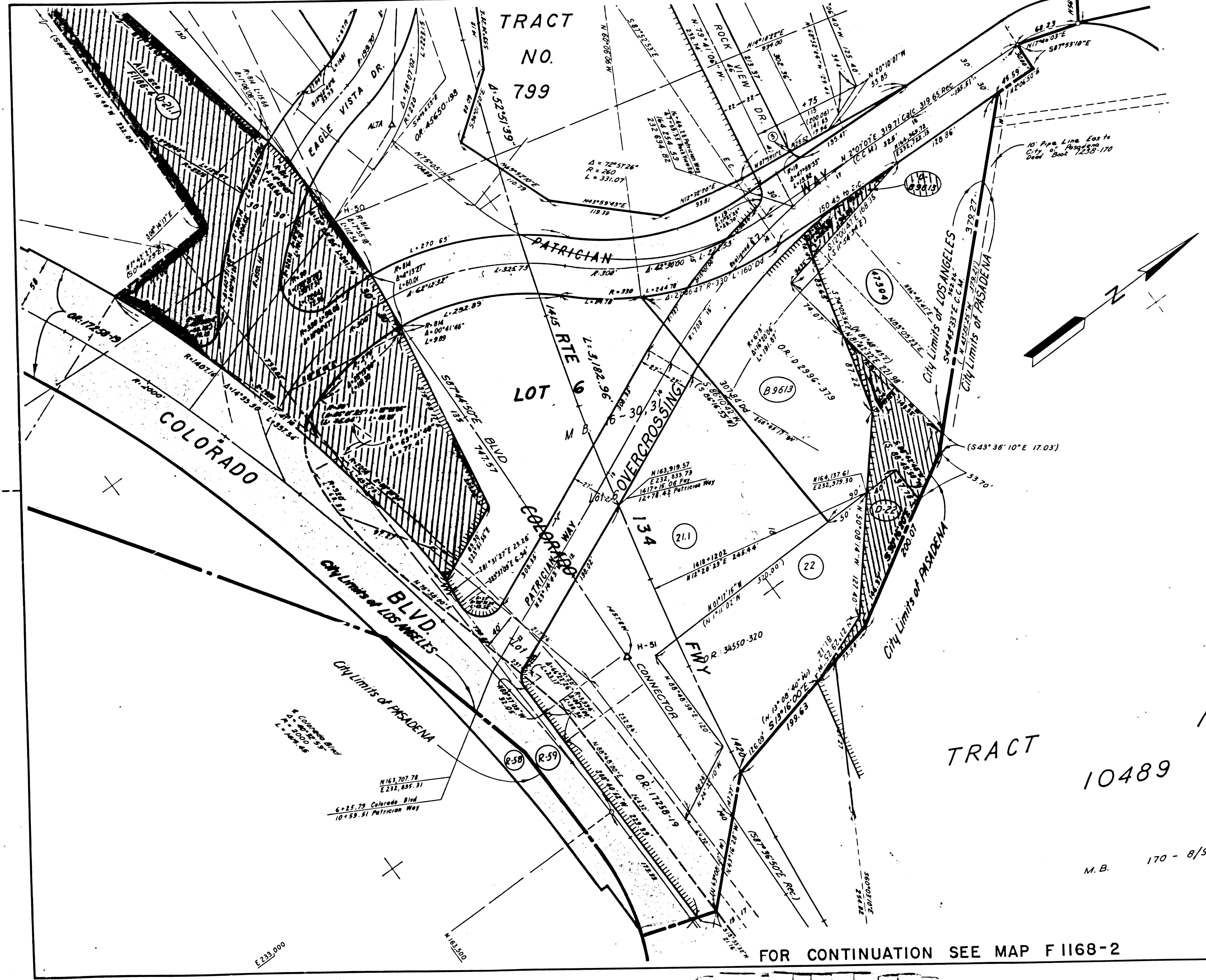
FOR CONTINUATION SEE MAP NO. F1166-6

TRACED BY S. J. M.

FOR CONTINUATION SEE MAP F1166-4 & 5

STATE	FEDERAL PROJECT NO	EFFECTIVE DATE	SHEET NO	TOTAL SHEETS
CALIF				

DISTRICT R/W AGENT BUREAU OF PUBLIC ROADS DATE



PARCEL NO	GRANTOR OR GRANTEE	ACQ	EXCESS	TOTAL	INST DATE	RECORDING OR
21.1	HUNTINGTON LAND IMM. CO.				FEE 4-8-52	38660-378
22	WOLFGANG				FEE 10-13-50	34550-320
B9613	BIBSON				FEE 7-30-65	D2996-379
47304	FOX				FEE 1-30-69	D4764-822
R58	STATE TO ANIMADALE GOLF CLUB				D.D. 9-2-70	D4821-389
R58	STATE TO CITY OF PASADENA				REL 10-26-55	49352-422
R59	STATE TO CITY OF LOS ANGELES				REL 11-7-55	49456-359
R59	STATE TO FOX				DD 10-17-70	D5637-983

FOR CONTINUATION SEE MAP NO. 19649-C

ISSUE DATE	STATE OF CALIFORNIA
Reprint 3-5-75	TRANSPORTATION DEPARTMENT OF PUBLIC WORKS
	AGENCY
	DIVISION OF HIGHWAYS
	(OLD 07-LA-161)
	R/W MAP
	NO. F1166-6
	07-LA-134-11.6
	DATE
	RWPE. LEONARD
	SR. FOLKINS

LEGEND:
 [Symbol] ACCESS DENIED
 [Symbol] AREA IN SQUARE FEET UNLESS OTHERWISE NOTED
 [Symbol] EXCLUDES STREET AREA
 () PREVIOUS RECORD DATA

FOR CONTINUATION SEE MAP F1168-2

F.M. 21585-7

F1166-6-7

TRACED BY: L.R.A.